



Australian Government

**Department of Infrastructure, Transport,
Regional Development, Communications and the Arts**
Bureau of Infrastructure and Transport Research Economics

STATISTICAL REPORT



bitre

Aviation

**Domestic aviation activity
January 2024**

The Department of Infrastructure, Transport, Regional Development, Communications and the Arts acknowledges the Traditional Custodians of Country of the land on which we work and live.

We recognise and respect the continuing connections to land, waters and communities.

We pay our respects to them and their cultures and to their Elders both past and present and to all Aboriginal and Torres Strait Islander people.

© Commonwealth of Australia 2024

ISSN: 1832 - 1968

Ownership of intellectual property rights in this publication

Unless otherwise noted, copyright (and any other intellectual property rights, if any) in this publication is owned by the Commonwealth of Australia (referred to below as the Commonwealth).

Disclaimer

The material contained in this publication is made available on the understanding that the Commonwealth is not providing professional advice, and that users exercise their own skill and care with respect to its use, and seek independent advice if necessary.

The Commonwealth makes no representations or warranties as to the contents or accuracy of the information contained in this publication. To the extent permitted by law, the Commonwealth disclaims liability to any person or organisation in respect of anything done, or omitted to be done, in reliance upon information contained in this publication.

Creative Commons licence

With the exception of (a) the Coat of Arms; and (b) the Department of Infrastructure, Transport, Regional Development, Communications and the Arts' photos and graphics, copyright in this publication is licensed under a Creative Commons Attribution 3.0 Australia Licence.

Creative Commons Attribution 3.0 Australia Licence is a standard form licence agreement that allows you to copy, communicate and adapt this publication provided that you attribute the work to the Commonwealth and abide by the other licence terms. A summary of the licence terms is available from <http://creativecommons.org/licenses/by/3.0/au/deed.en>.

The full licence terms are available from <http://creativecommons.org/licenses/by/3.0/au/legalcode>.

Use of the Coat of Arms

The Department of the Prime Minister and Cabinet sets the terms under which the Coat of Arms is used. Please refer to the Department's Commonwealth Coat of Arms and Government branding web page <http://www.dpmc.gov.au/guidelines/index.cfm#brand> and, in particular, the Guidelines on the use of the Commonwealth Coat of Arms publication.

An appropriate citation for this report is:

Bureau of Infrastructure and Transport Research Economics (BITRE), 2024, Domestic aviation activity, Statistical Report, BITRE, Canberra ACT.

Contact us

This publication is available in PDF format. All other rights are reserved, including in relation to any Departmental logos or trade marks which may exist. For enquiries regarding the licence and any use of this publication, please contact:

Bureau of Infrastructure and Transport Research Economics (BITRE)
Department of Infrastructure, Transport, Regional Development, Communications and the Arts
GPO Box 501, Canberra ACT 2601, Australia

Email: bitre@infrastructure.gov.au

Website: www.bitre.gov.au

Inquiries

Nebojsa.Pavlovic@infrastructure.gov.au (02) 6136 8282

FOREWORD

This report provides an overview of domestic (including charter) commercial aviation activity in Australia for the month of January 2024.

The data covers revenue passengers carried by Australian-registered operators of scheduled regular public transport services over Australian flight stages and fixed-wing charter operators. These estimates include passengers carried between domestic airports on international flights operated by these carriers. The passengers carried refer to traffic on board by stages.

Estimates of passengers and aircraft movements for charter aviation are included in this publication, where BITRE confidentiality standards are met.

Individual routes shown are restricted to those with an average exceeding 8,000 passengers per month over the previous six months where two or more airlines operate in competition. However, for the period from December 2021 through to December 2022, the major airlines (Qantas Group, Virgin Australia and Rex Airlines) agreed to publication of the top 35 routes based on pre-COVID activity (December 2019) whether or not they were meeting the above criteria. From January 2023, the passenger load and dual competition requirements were reinstated due to the continued recovery of passenger numbers.

Information on the total network for the month of January 2024 and on the Regular Public Transport (RPT) network for the month of January 2024 is presented on page 2, with estimates for the year ended January 2024 presented on page 3.

Detailed information on individual routes can be found in the RPT summary pages 4-13 of this publication. For the month of January 2024, there are 61 individual routes published.

The top ten airports in terms of RPT passenger movements are shown on page 14.

Data on domestic RPT cargo movements at the top five cargo airports are provided on page 15. The table includes cargo carried on passenger flights operated by the Qantas group (including Jetstar), Virgin Australia, Air North and Skippers as well as the cargo carried by dedicated freighter aircraft operated by Qantas Freight and Team Global Express (formerly Toll).

The long-term trends for the top ten competitive RPT routes are presented graphically on pages 16-25.

Domestic RPT passenger movements at regional airports are shown on pages 26-27.

Tables providing estimates of domestic charter aviation activity are shown on page 28. BITRE confidentiality standards restrict publication of detailed estimates for individual Australian airports, with the exception of Perth Airport.

A list of definitions can be found on page 29.

This report was prepared by the Aviation Statistics Section of the Bureau of Infrastructure and Transport Research Economics with data provided by airlines.

Estimates are included where data were not available and data presented in this publication may contain revisions to previously published data.

Where figures have been rounded, discrepancies may occur between sums of component items and totals, and in percentage changes which are derived from figures prior to rounding.

CONTENTS

Highlights	1
Total network.....	2
RPT network	2
Top competitive routes.....	4
Top ten airports – passenger movements.....	14
Top five airports – cargo movements.....	15
Top ten routes	16
1. Melbourne – Sydney	16
2. Brisbane – Sydney.....	17
3. Brisbane – Melbourne	18
4. Gold Coast – Sydney	19
5. Gold Coast - Melbourne	20
6. Adelaide – Melbourne	21
7. Melbourne – Perth	22
8. Adelaide – Sydney	23
9. Perth – Sydney	24
10. Hobart – Melbourne	25
Top fifty regional airports	26
Domestic charter activity.....	28
Definitions	29

This page is intentionally left blank.

HIGHLIGHTS

There were 5.16 million passengers carried on Australian domestic commercial aviation (including charter operations) in January 2024, an increase of 7.3 per cent on January 2023.

4.80 million passengers were carried on RPT flights in January 2024, an increase of 6.6 per cent compared to January 2023.

For the month of January 2024, there were 50.8 thousand RPT aircraft trips, up 3.8 per cent compared to January 2023.

For the year ending January 2024 there were 57.57 million RPT passengers, an increase of 10.4 per cent on the year ending January 2023.

RPT revenue passenger kilometres (RPKs) performed were 5.82 billion for the month, compared with 5.48 billion in January 2023 (up 6.2 per cent).

Capacity, measured by available seat kilometres (ASKs), increased to 7.54 billion in January 2024 compared to 7.04 billion in January 2023 (up 7.1 per cent).

The industry wide load factor (RPKs/ASKs) decreased from 77.8 per cent in January 2023 to 77.1 per cent in January 2024. The highest load factor (86.9 per cent) was recorded on the Perth – Sydney route while the lowest load factor (41.2 per cent) was recorded on the Geraldton – Perth route.

For the month of January 2024, Melbourne – Sydney was Australia's busiest RPT route with 650.3 thousand passengers, followed by Brisbane – Sydney with 316.5 thousand passengers and Brisbane – Melbourne with 265.3 thousand passengers.

Melbourne was Australia's busiest domestic airport with 2.05 million passenger movements in January 2024, followed by Sydney with 2.04 million passenger movements and Brisbane with 1.26 million passenger movements.

Total cargo movements at Australian airports on domestic RPT flights were 25.0 thousand tonnes in January 2024, a decrease of 1.3 per cent compared with January 2023.

In January 2024, there were 1.96 million domestic passenger movements through regional airports, compared to 1.85 million in January 2023, an increase of 6.0 per cent. Out of the top 50 regional airports, the strongest increase was recorded at Toowoomba Wellcamp Airport (up 190.3 per cent on January 2023), while the largest decrease was recorded at Armidale Airport (down 12.9 per cent on January 2023).

Fixed-wing charter operators carried 364.0 thousand passengers in January 2024, an increase of 16.4 per cent compared with January 2023. Perth Airport accounted for 37.3 per cent of all charter passengers in Australia.

TOTAL NETWORK

Summary of monthly commercial aviation activity

	Jan 2023	Jan 2024	% Change
Total passengers carried (millions)	4.81	5.16	7.3
Aircraft trips (000s)	54.6	57.2	4.8

Note: Regular Public Transport and charter aviation activity

Helicopter, joy flights and sightseeing charter flights not included.

RPT NETWORK

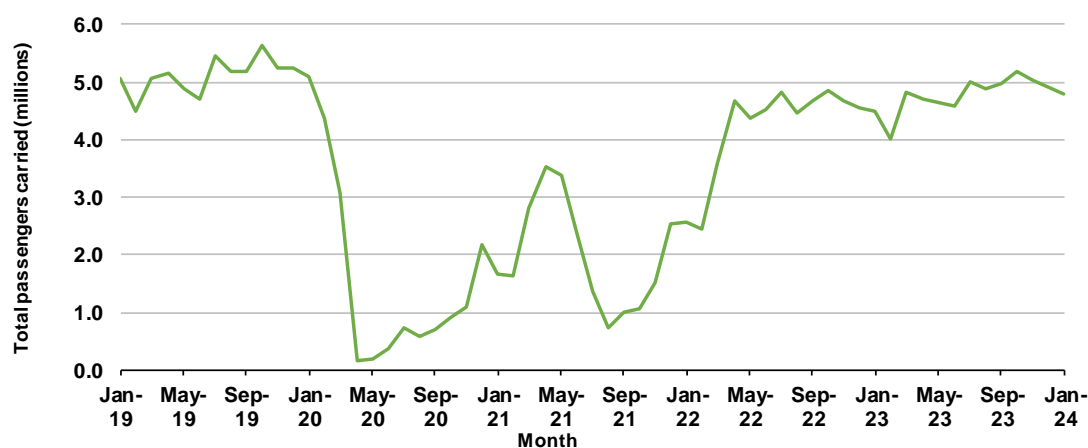
Summary of monthly RPT activity

	Jan 2023	Jan 2024	% Change
Total passengers carried (millions)	4.50	4.80	6.6
Revenue passenger kilometres (billions)	5.48	5.82	6.2
Available seats (millions)	5.98	6.36	6.5
Available seat kilometres (billions)	7.04	7.54	7.1
Load factor %	77.8	77.1	-0.7 *
Aircraft trips (000s)	49.0	50.8	3.8

* percentage point difference

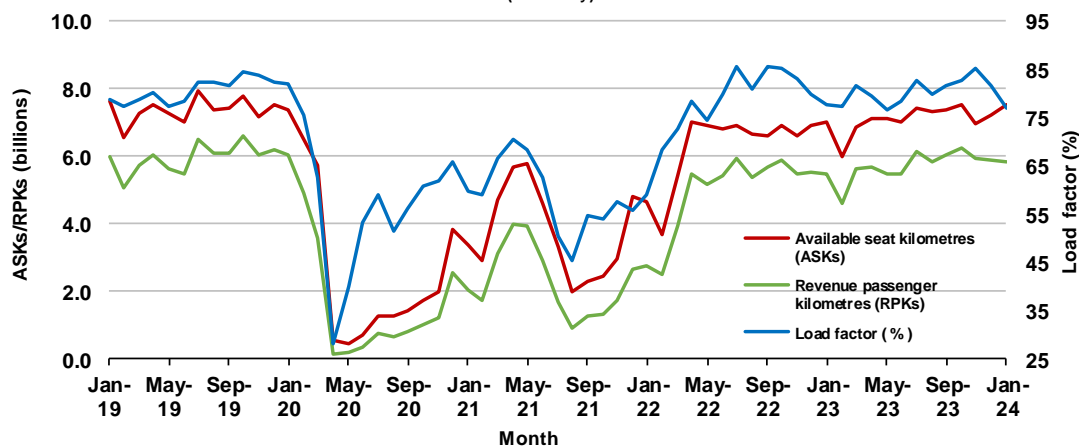
Domestic RPT passenger traffic

(monthly)



RPT Network utilisation

(monthly)



TOTAL NETWORK

Summary of annual commercial aviation activity

	YE Jan 2023	YE Jan 2024	% Change
Total passengers carried (millions)	55.76	61.67	10.6
Aircraft trips (000s)	636.7	684.6	7.5

Note: Regular Public Transport and charter aviation activity
Helicopter, joy flights and sightseeing charter flights not included.

RPT NETWORK

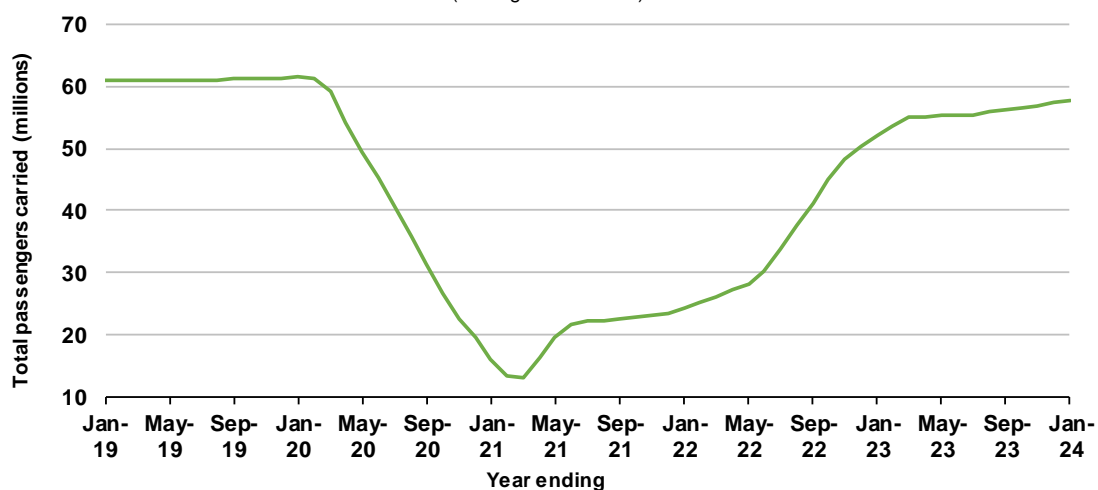
Summary of annual RPT activity

	YE Jan 2023	YE Jan 2024	% Change
Total passengers carried (millions)	52.14	57.57	10.4
Revenue passenger kilometres (billions)	61.89	68.76	11.1
Available seats (millions)	67.21	73.57	9.5
Available seat kilometres (billions)	77.44	85.52	10.4
Load factor %	79.9	80.4	0.5 *
Aircraft trips (000s)	570.3	614.1	7.7

* percentage point difference

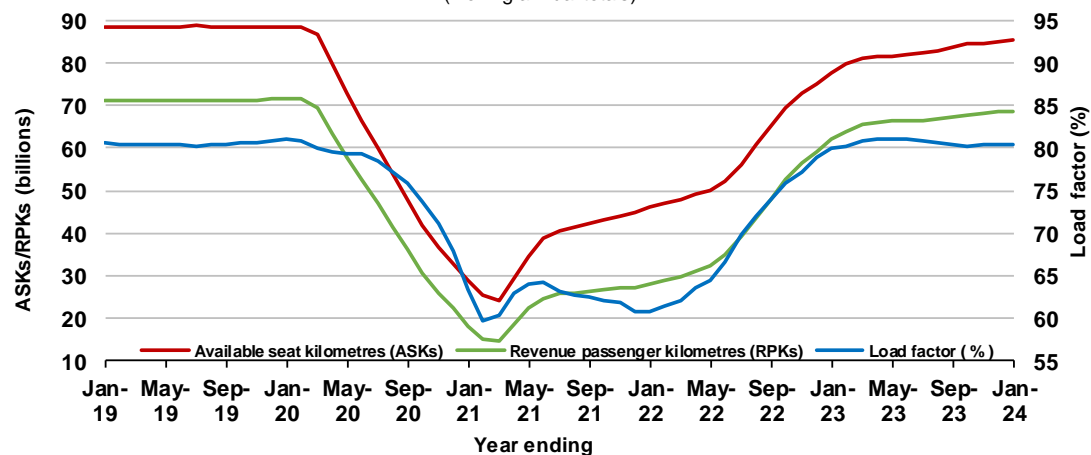
Domestic RPT passenger traffic

(moving annual totals)



RPT Network utilisation

(moving annual totals)



TOP COMPETITIVE ROUTES

Table 1: Passengers carried (000s) — annual activity

	City-Pair	YE Jan 2023	YE Jan 2024	% Change
1	Melbourne - Sydney	6 839.1	8 270.6	20.9
2	Brisbane - Sydney	3 766.3	4 567.1	21.3
3	Brisbane - Melbourne	2 905.3	3 577.1	23.1
4	Gold Coast - Sydney	2 387.0	2 675.8	12.1
5	Adelaide - Melbourne	2 056.8	2 471.7	20.2
6	Gold Coast - Melbourne	2 316.5	2 432.8	5.0
7	Melbourne - Perth	1 516.6	2 087.8	37.7
8	Adelaide - Sydney	1 478.7	1 900.9	28.6
9	Perth - Sydney	1 249.0	1 730.4	38.5
10	Hobart - Melbourne	1 143.0	1 431.4	25.2
11	Brisbane - Cairns	1 163.5	1 334.1	14.7
12	Brisbane - Perth	824.3	1 099.9	33.4
13	Canberra - Melbourne	882.4	1 069.5	21.2
14	Cairns - Sydney	854.3	954.7	11.7
15	Brisbane - Townsville	835.8	931.7	11.5
16	Launceston - Melbourne	715.0	899.7	25.8
17	Adelaide - Brisbane	741.6	891.6	20.2
18	Cairns - Melbourne	812.4	883.2	8.7
19	Sunshine Coast - Sydney	714.0	828.0	16.0
20	Melbourne - Sunshine Coast	727.6	826.8	13.6
21	Hobart - Sydney	674.4	813.8	20.7
22	Brisbane - Mackay	719.2	780.0	8.4
23	Adelaide - Perth	540.2	712.3	31.9
24	Brisbane - Canberra	608.4	673.3	10.7
25	Canberra - Sydney	558.7	638.0	14.2
26	Karratha - Perth	498.9	588.6	18.0
27	Ballina - Sydney	507.6	579.3	14.1
28	Brisbane - Rockhampton	455.1	545.4	19.9
29	Brisbane - Newcastle	467.3	537.0	14.9
30	Perth - Port Hedland	456.6	516.8	13.2
31	Melbourne - Newcastle	393.8	456.7	16.0
32	Newman - Perth	347.2	399.2	15.0
33	Broome - Perth	365.3	386.0	5.7
34	Kalgoorlie - Perth	307.5	385.9	25.5
35	Launceston - Sydney	290.1	365.9	26.1
36	Brisbane - Darwin	333.6	345.2	3.5
37	Brisbane - Hobart	295.1	327.1	10.8
38	Darwin - Melbourne	307.2	304.5	-0.9
39	Brisbane - Proserpine	292.5	297.9	1.9
40	Adelaide - Gold Coast	232.3	286.8	23.5
41	Hamilton Island - Sydney	244.7	267.5	9.3
42	Coffs Harbour - Sydney	210.4	229.4	9.0
43	Brisbane - Gladstone	199.1	229.2	15.1
44	Adelaide - Canberra	158.6	204.6	29.0
45	Brisbane - Emerald	164.3	197.5	20.2
46	Canberra - Gold Coast	149.2	191.8	28.5
47	Dubbo - Sydney	151.9	189.1	24.5
48	Adelaide - Port Lincoln	175.4	187.7	7.0
49	Darwin - Perth	160.5	183.5	14.3
50	Melbourne - Mildura	142.5	179.2	25.8

continued

Table 1: (continued) Passengers carried (000s) — annual activity

	City-Pair	YE Jan 2023	YE Jan 2024	% Change
51	Port Macquarie - Sydney	147.4	178.1	20.8
52	Albury - Sydney	155.3	176.6	13.8
53	Brisbane - Hamilton Island	175.8	176.4	0.3
54	Brisbane - Launceston	171.6	167.9	-2.2
55	Sydney - Wagga Wagga	140.5	163.3	16.3
56	Brisbane - Mount Isa	138.5	153.3	10.7
57	Devonport - Melbourne	102.9	130.4	26.7
58	Brisbane - Bundaberg	..	130.1	NA
59	Adelaide - Alice Springs	102.7	124.2	20.9
60	Brisbane - Moranbah	100.3	118.1	17.7
61	Geraldton - Perth	..	25.4	NA
Total domestic network		52 136.8	57 571.2	10.4

.. Data not available for release.

Table 2: Passengers carried (000s) — monthly activity

	City-Pair	Jan 2023	Jan 2024	% Change
1	Melbourne - Sydney	568.7	650.3	14.3
2	Brisbane - Sydney	307.7	316.5	2.8
3	Brisbane - Melbourne	255.6	265.3	3.8
4	Gold Coast - Sydney	226.5	239.2	5.6
5	Gold Coast - Melbourne	219.0	217.3	-0.8
6	Adelaide - Melbourne	178.8	187.8	5.0
7	Melbourne - Perth	173.4	172.0	-0.8
8	Adelaide - Sydney	128.5	157.7	22.7
9	Perth - Sydney	132.1	143.6	8.6
10	Hobart - Melbourne	122.2	136.6	11.8
11	Brisbane - Perth	90.1	90.5	0.4
12	Brisbane - Cairns	93.9	90.3	-3.8
13	Launceston - Melbourne	76.4	84.7	11.0
14	Melbourne - Sunshine Coast	64.9	79.2	22.0
15	Hobart - Sydney	69.4	78.9	13.7
16	Cairns - Sydney	74.6	75.2	0.9
17	Adelaide - Brisbane	61.5	72.4	17.8
18	Cairns - Melbourne	57.8	72.2	25.0
19	Canberra - Melbourne	68.2	72.1	5.8
20	Sunshine Coast - Sydney	69.2	71.2	2.9
21	Brisbane - Townsville	62.9	58.9	-6.3
22	Adelaide - Perth	55.4	58.1	4.9
23	Brisbane - Mackay	55.6	51.6	-7.2
24	Karratha - Perth	39.0	44.9	15.2
25	Ballina - Sydney	51.2	44.6	-12.9
26	Brisbane - Canberra	44.7	42.9	-4.0
27	Perth - Port Hedland	36.7	37.4	2.0
28	Brisbane - Newcastle	37.1	37.2	0.3
29	Brisbane - Rockhampton	35.2	35.9	2.0
30	Canberra - Sydney	32.1	35.5	10.6
31	Melbourne - Newcastle	35.4	35.4	0.0
32	Launceston - Sydney	36.4	34.9	-4.0
33	Brisbane - Hobart	28.4	33.3	17.2
34	Newman - Perth	29.2	28.0	-4.1
35	Adelaide - Gold Coast	23.8	26.6	11.6
36	Kalgoorlie - Perth	24.1	26.6	10.2
37	Brisbane - Darwin	24.2	23.7	-2.0
38	Brisbane - Proserpine	22.9	23.2	1.4
39	Broome - Perth	22.7	22.2	-2.3
40	Hamilton Island - Sydney	24.6	21.3	-13.3
41	Darwin - Melbourne	18.9	21.1	11.9
42	Canberra - Gold Coast	16.2	16.0	-1.7
43	Coffs Harbour - Sydney	15.3	15.6	2.0
44	Brisbane - Launceston	16.1	15.3	-4.9
45	Brisbane - Gladstone	14.9	15.2	1.7
46	Adelaide - Port Lincoln	14.4	13.9	-3.9
47	Brisbane - Emerald	13.2	13.2	0.4
48	Melbourne - Mildura	9.4	12.6	34.1
49	Darwin - Perth	12.4	12.3	-1.0
50	Brisbane - Hamilton Island	13.3	12.1	-9.1

continued

Table 2: (continued) Passengers carried (000s) — monthly activity

	City-Pair	Jan 2023	Jan 2024	% Change
51	Port Macquarie - Sydney	11.0	11.5	5.0
52	Dubbo - Sydney	10.2	11.4	10.9
53	Adelaide - Canberra	10.2	11.2	9.5
54	Albury - Sydney	10.5	10.9	4.4
55	Brisbane - Mount Isa	9.9	9.7	-2.9
56	Sydney - Wagga Wagga	9.1	9.4	2.6
57	Devonport - Melbourne	9.8	9.1	-6.8
58	Brisbane - Moranbah	8.3	8.9	7.7
59	Brisbane - Bundaberg	..	8.8	NA
60	Geraldton - Perth	..	7.8	NA
61	Adelaide - Alice Springs	6.7	7.7	14.5
Total domestic network		4 497.7	4 795.6	6.6

.. Data not available for release.

Table 3: Available seats (000s) — monthly activity

	City-Pair	Jan 2023	Jan 2024	% Change
1	Melbourne - Sydney	706.9	767.3	8.5
2	Brisbane - Sydney	396.4	400.1	0.9
3	Brisbane - Melbourne	328.4	349.5	6.4
4	Gold Coast - Sydney	260.4	280.6	7.7
5	Gold Coast - Melbourne	252.2	272.7	8.1
6	Adelaide - Melbourne	231.9	228.3	-1.5
7	Melbourne - Perth	203.2	202.2	-0.5
8	Adelaide - Sydney	156.4	201.4	28.8
9	Perth - Sydney	150.7	165.3	9.6
10	Hobart - Melbourne	156.7	187.3	19.6
11	Brisbane - Perth	111.3	109.2	-1.9
12	Brisbane - Cairns	114.9	124.6	8.5
13	Launceston - Melbourne	104.4	119.3	14.3
14	Melbourne - Sunshine Coast	84.1	99.8	18.8
15	Hobart - Sydney	83.7	94.6	13.0
16	Cairns - Sydney	89.6	101.5	13.2
17	Adelaide - Brisbane	79.4	95.8	20.7
18	Cairns - Melbourne	69.1	96.1	38.9
19	Canberra - Melbourne	99.4	99.2	-0.2
20	Sunshine Coast - Sydney	92.7	91.0	-1.9
21	Brisbane - Townsville	90.7	86.2	-4.9
22	Adelaide - Perth	70.3	75.8	7.8
23	Brisbane - Mackay	81.8	70.2	-14.2
24	Karratha - Perth	61.1	71.2	16.6
25	Ballina - Sydney	64.7	53.5	-17.3
26	Brisbane - Canberra	73.4	57.2	-22.1
27	Perth - Port Hedland	51.5	68.0	32.1
28	Brisbane - Newcastle	55.4	51.6	-6.9
29	Brisbane - Rockhampton	55.9	49.8	-10.9
30	Canberra - Sydney	53.0	56.2	6.0
31	Melbourne - Newcastle	44.9	44.8	-0.4
32	Launceston - Sydney	44.1	41.2	-6.5
33	Brisbane - Hobart	38.7	43.3	11.8
34	Newman - Perth	49.6	54.6	10.2
35	Adelaide - Gold Coast	27.6	32.0	15.9
36	Kalgoorlie - Perth	41.6	50.1	20.4
37	Brisbane - Darwin	31.1	31.9	2.3
38	Brisbane - Proserpine	29.5	35.9	21.5
39	Broome - Perth	31.5	32.2	2.4
40	Hamilton Island - Sydney	30.9	28.3	-8.5
41	Darwin - Melbourne	24.7	25.4	2.7
42	Canberra - Gold Coast	22.0	18.9	-13.8
43	Coffs Harbour - Sydney	23.0	22.7	-1.1
44	Brisbane - Launceston	22.9	19.6	-14.2
45	Brisbane - Gladstone	27.2	23.7	-12.8
46	Adelaide - Port Lincoln	23.0	22.7	-1.3
47	Brisbane - Emerald	21.6	20.4	-5.5
48	Melbourne - Mildura	13.3	18.1	36.5
49	Darwin - Perth	18.4	16.9	-8.3
50	Brisbane - Hamilton Island	21.2	20.4	-3.5

continued

Table 3: (continued) Available seats (000s) — monthly activity

	City-Pair	Jan 2023	Jan 2024	% Change
51	Port Macquarie - Sydney	21.0	19.0	-9.6
52	Dubbo - Sydney	20.7	19.2	-7.1
53	Adelaide - Canberra	17.5	16.4	-6.2
54	Albury - Sydney	18.8	18.0	-4.3
55	Brisbane - Mount Isa	17.1	19.2	11.9
56	Sydney - Wagga Wagga	19.2	18.3	-4.8
57	Devonport - Melbourne	16.0	13.9	-13.4
58	Brisbane - Moranbah	17.9	16.6	-7.5
59	Brisbane - Bundaberg	..	13.3	NA
60	Geraldton - Perth	..	18.8	NA
61	Adelaide - Alice Springs	10.5	13.1	24.8
Total domestic network		5 975.0	6 363.0	6.5

.. Data not available for release.

Table 4: Load factors (%) — monthly activity

	City-Pair	Jan 2023	Jan 2024	% Point diff
1	Melbourne - Sydney	80.5	84.8	4.3
2	Brisbane - Sydney	77.6	79.1	1.5
3	Brisbane - Melbourne	77.8	75.9	-1.9
4	Gold Coast - Sydney	87.0	85.2	-1.8
5	Gold Coast - Melbourne	86.8	79.7	-7.1
6	Adelaide - Melbourne	77.1	82.2	5.1
7	Melbourne - Perth	85.3	85.1	-0.2
8	Adelaide - Sydney	82.2	78.3	-3.9
9	Perth - Sydney	87.7	86.9	-0.8
10	Hobart - Melbourne	78.0	72.9	-5.1
11	Brisbane - Perth	81.0	82.9	1.9
12	Brisbane - Cairns	81.7	72.5	-9.2
13	Launceston - Melbourne	73.1	71.0	-2.1
14	Melbourne - Sunshine Coast	77.2	79.3	2.1
15	Hobart - Sydney	82.9	83.4	0.5
16	Cairns - Sydney	83.2	74.1	-9.1
17	Adelaide - Brisbane	77.5	75.7	-1.8
18	Cairns - Melbourne	83.6	75.2	-8.4
19	Canberra - Melbourne	68.6	72.7	4.1
20	Sunshine Coast - Sydney	74.7	78.3	3.6
21	Brisbane - Townsville	69.4	68.4	-1.0
22	Adelaide - Perth	78.9	76.7	-2.2
23	Brisbane - Mackay	67.9	73.5	5.6
24	Karratha - Perth	63.9	63.1	-0.8
25	Ballina - Sydney	79.2	83.4	4.2
26	Brisbane - Canberra	60.9	74.9	14.0
27	Perth - Port Hedland	71.3	55.0	-16.3
28	Brisbane - Newcastle	67.0	72.2	5.2
29	Brisbane - Rockhampton	62.9	72.1	9.2
30	Canberra - Sydney	60.5	63.2	2.7
31	Melbourne - Newcastle	78.8	79.1	0.3
32	Launceston - Sydney	82.5	84.7	2.2
33	Brisbane - Hobart	73.4	76.9	3.5
34	Newman - Perth	59.0	51.3	-7.7
35	Adelaide - Gold Coast	86.3	83.1	-3.2
36	Kalgoorlie - Perth	58.0	53.1	-4.9
37	Brisbane - Darwin	77.7	74.4	-3.3
38	Brisbane - Proserpine	77.6	64.7	-12.9
39	Broome - Perth	72.2	68.9	-3.3
40	Hamilton Island - Sydney	79.4	75.3	-4.1
41	Darwin - Melbourne	76.4	83.2	6.8
42	Canberra - Gold Coast	73.9	84.3	10.4
43	Coffs Harbour - Sydney	66.5	68.6	2.1
44	Brisbane - Launceston	70.4	78.1	7.7
45	Brisbane - Gladstone	55.0	64.2	9.2
46	Adelaide - Port Lincoln	62.8	61.1	-1.7
47	Brisbane - Emerald	61.2	65.0	3.8
48	Melbourne - Mildura	70.7	69.4	-1.3
49	Darwin - Perth	67.5	72.9	5.4
50	Brisbane - Hamilton Island	63.0	59.3	-3.7

continued

Table 4: (continued) Load factors (%) — monthly activity

	City-Pair	Jan 2023	Jan 2024	% Point diff
51	Port Macquarie - Sydney	52.4	60.9	8.5
52	Dubbo - Sydney	49.4	59.0	9.6
53	Adelaide - Canberra	58.2	68.0	9.8
54	Albury - Sydney	55.8	60.9	5.1
55	Brisbane - Mount Isa	58.0	50.3	-7.7
56	Sydney - Wagga Wagga	47.7	51.4	3.7
57	Devonport - Melbourne	61.0	65.7	4.7
58	Brisbane - Moranbah	46.2	53.8	7.6
59	Brisbane - Bundaberg	..	66.6	NA
60	Geraldton - Perth	..	41.2	NA
61	Adelaide - Alice Springs	63.6	58.4	-5.2
Total domestic network		77.8	77.1	-0.7

.. Data not available for release.

Table 5: Aircraft trips ^(a) — monthly activity

	City-Pair	Jan 2023	Jan 2024	% Change
1	Melbourne - Sydney	4 068	4 428	8.8
2	Brisbane - Sydney	2 407	2 466	2.5
3	Brisbane - Melbourne	1 977	2 045	3.4
4	Gold Coast - Sydney	1 514	1 571	3.8
5	Gold Coast - Melbourne	1 374	1 518	10.5
6	Adelaide - Melbourne	1 416	1 380	-2.5
7	Melbourne - Perth	1 126	1 161	3.1
8	Adelaide - Sydney	948	1 218	28.5
9	Perth - Sydney	805	905	12.4
10	Hobart - Melbourne	906	1 063	17.3
11	Brisbane - Perth	646	615	-4.8
12	Brisbane - Cairns	747	852	14.1
13	Launceston - Melbourne	816	856	4.9
14	Melbourne - Sunshine Coast	481	557	15.8
15	Hobart - Sydney	506	566	11.9
16	Cairns - Sydney	462	539	16.7
17	Adelaide - Brisbane	680	730	7.4
18	Cairns - Melbourne	367	488	33.0
19	Canberra - Melbourne	705	689	-2.3
20	Sunshine Coast - Sydney	568	508	-10.6
21	Brisbane - Townsville	613	629	2.6
22	Adelaide - Perth	407	429	5.4
23	Brisbane - Mackay	605	650	7.4
24	Karratha - Perth	383	431	12.5
25	Ballina - Sydney	468	366	-21.8
26	Brisbane - Canberra	527	476	-9.7
27	Perth - Port Hedland	343	411	19.8
28	Brisbane - Newcastle	491	466	-5.1
29	Brisbane - Rockhampton	627	578	-7.8
30	Canberra - Sydney	965	932	-3.4
31	Melbourne - Newcastle	287	275	-4.2
32	Launceston - Sydney	267	259	-3.0
33	Brisbane - Hobart	238	257	8.0
34	Newman - Perth	321	336	4.7
35	Adelaide - Gold Coast	162	170	4.9
36	Kalgoorlie - Perth	290	328	13.1
37	Brisbane - Darwin	250	249	-0.4
38	Brisbane - Proserpine	196	226	15.3
39	Broome - Perth	232	224	-3.4
40	Hamilton Island - Sydney	176	160	-9.1
41	Darwin - Melbourne	139	169	21.6
42	Canberra - Gold Coast	124	106	-14.5
43	Coffs Harbour - Sydney	409	411	0.5
44	Brisbane - Launceston	136	118	-13.2
45	Brisbane - Gladstone	350	291	-16.9
46	Adelaide - Port Lincoln	559	552	-1.3
47	Brisbane - Emerald	323	304	-5.9
48	Melbourne - Mildura	303	353	16.5
49	Darwin - Perth	106	109	2.8
50	Brisbane - Hamilton Island	125	139	11.2

continued

Table 5: (continued) Aircraft trips ^(a) — monthly activity

	City-Pair	Jan 2023	Jan 2024	% Change
51	Port Macquarie - Sydney	362	321	-11.3
52	Dubbo - Sydney	370	345	-6.8
53	Adelaide - Canberra	151	151	0.0
54	Albury - Sydney	342	308	-9.9
55	Brisbane - Mount Isa	164	174	6.1
56	Sydney - Wagga Wagga	344	314	-8.7
57	Devonport - Melbourne	360	301	-16.4
58	Brisbane - Moranbah	238	220	-7.6
59	Brisbane - Bundaberg	..	201	NA
60	Geraldton - Perth	..	210	NA
61	Adelaide - Alice Springs	134	156	16.4
Total domestic network		48 991	50 835	3.8

(a) Includes RPT cargo flights.

.. Data not available for release.

TOP TEN AIRPORTS – PASSENGER MOVEMENTS

Table 6: Top ten airports, RPT passenger movements (000s) - monthly activity

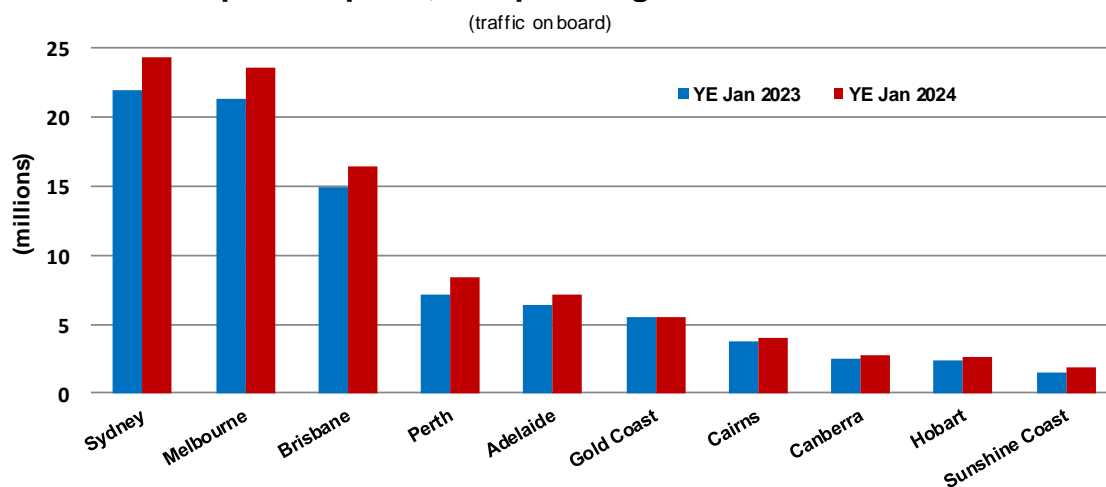
Airport	Jan 2023	Jan 2024	% Change	% of Total
1 Melbourne	1 889.8	2 049.8	8.5	21.4
2 Sydney	1 893.3	2 036.0	7.5	21.2
3 Brisbane	1 238.7	1 257.6	1.5	13.1
4 Perth	680.7	712.7	4.7	7.4
5 Adelaide	554.4	602.1	8.6	6.3
6 Gold Coast	515.2	533.9	3.6	5.6
7 Cairns	299.1	313.4	4.8	3.3
8 Hobart	248.5	276.7	11.4	2.9
9 Canberra	184.9	188.6	2.0	2.0
10 Sunshine Coast	140.3	182.7	30.2	1.9
Total top ten airports	7 644.7	8 153.5	6.7	85.0
Total domestic network	8 995.4	9 591.1	6.6	100.0

Table 7: Top ten airports, RPT passenger movements (000s) - annual activity

Airport	YE Jan 2023	YE Jan 2024	% Change	% of Total
1 Sydney	21 910.5	24 279.2	10.8	21.1
2 Melbourne	21 252.9	23 557.1	10.8	20.5
3 Brisbane	14 920.2	16 372.7	9.7	14.2
4 Perth	7 125.5	8 435.5	18.4	7.3
5 Adelaide	6 322.3	7 164.6	13.3	6.2
6 Gold Coast	5 466.1	5 477.8	0.2	4.8
7 Cairns	3 764.1	3 984.8	5.9	3.5
8 Canberra	2 523.1	2 762.8	9.5	2.4
9 Hobart	2 381.1	2 607.7	9.5	2.3
10 Sunshine Coast	1 527.4	1 897.0	24.2	1.6
Total top ten airports	87 193.3	96 539.4	10.7	83.8
Total domestic network	104 273.7	115 142.4	10.4	100.0

Note: Airport passenger movement numbers are the sum of passenger arrivals and departures at each airport.

Top ten airports, RPT passenger movements



TOP FIVE AIRPORTS – CARGO MOVEMENTS

Table 8: Top five airports, domestic RPT cargo movements (000s tonnes) - monthly activity

Airport	Jan 2023	Jan 2024	% Change	% of Total
1 Melbourne	6.7	6.9	3.5	27.6
2 Sydney	5.4	5.5	1.5	22.0
3 Brisbane	4.4	4.5	1.8	17.8
4 Perth	2.7	2.6	-3.4	10.5
5 Adelaide	1.4	1.4	-0.9	5.7
Total top five airports	20.6	20.9	1.4	83.7
Total domestic network	25.3	25.0	-1.3	100.0

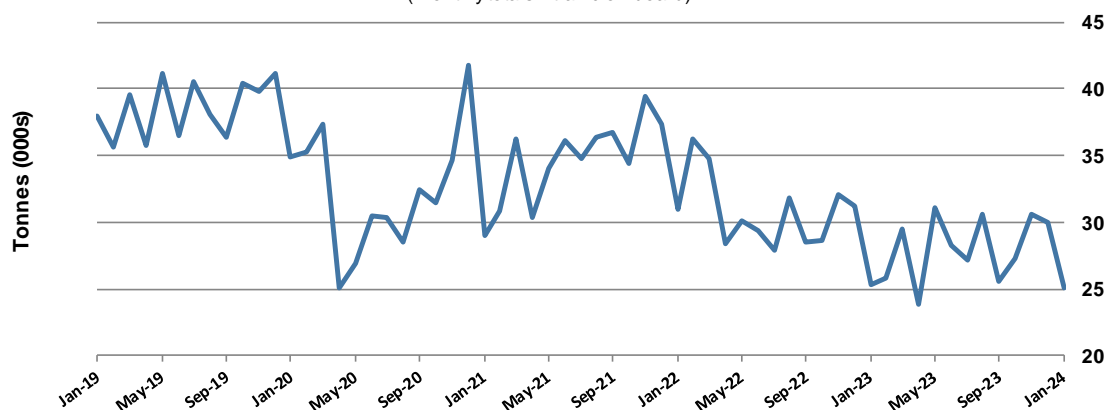
Table 9: Top five airports, domestic RPT cargo movements (000s tonnes) - annual activity

Airport	YE Jan 2023	YE Jan 2024	% Change	% of Total
1 Melbourne	95.1	90.1	-5.3	26.9
2 Sydney	80.8	75.5	-6.6	22.5
3 Brisbane	62.2	59.3	-4.6	17.7
4 Perth	35.9	34.6	-3.7	10.3
5 Adelaide	21.9	18.9	-13.8	5.6
Total top five airports	296.0	278.4	-6.0	83.2
Total domestic network	364.4	334.7	-8.2	100.0

Note: Airport cargo tonnes are the sum of cargo tonnes on arrivals and departures at each airport.

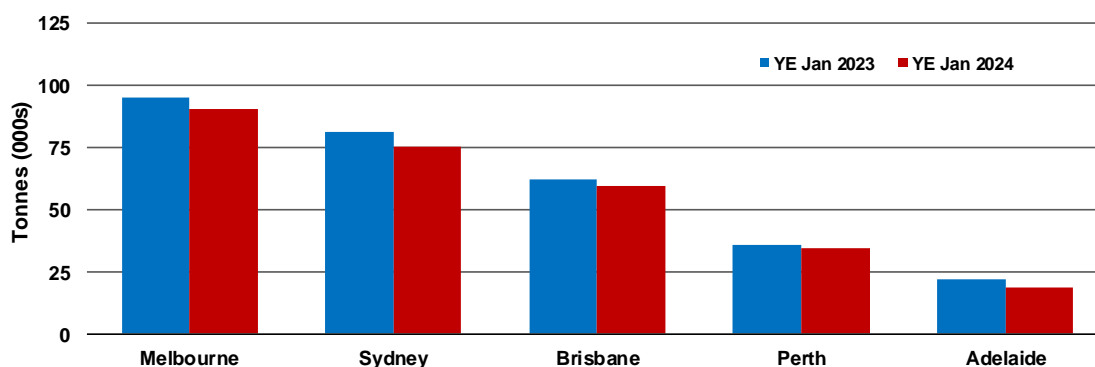
Total domestic network - cargo movement

(monthly totals - traffic on board)



Top five airports, cargo movements

(Domestic cargo traffic - traffic on board)



Note: Airport cargo tonnes are the sum of cargo tonnes on arrivals and departures at each airport.

TOP TEN ROUTES

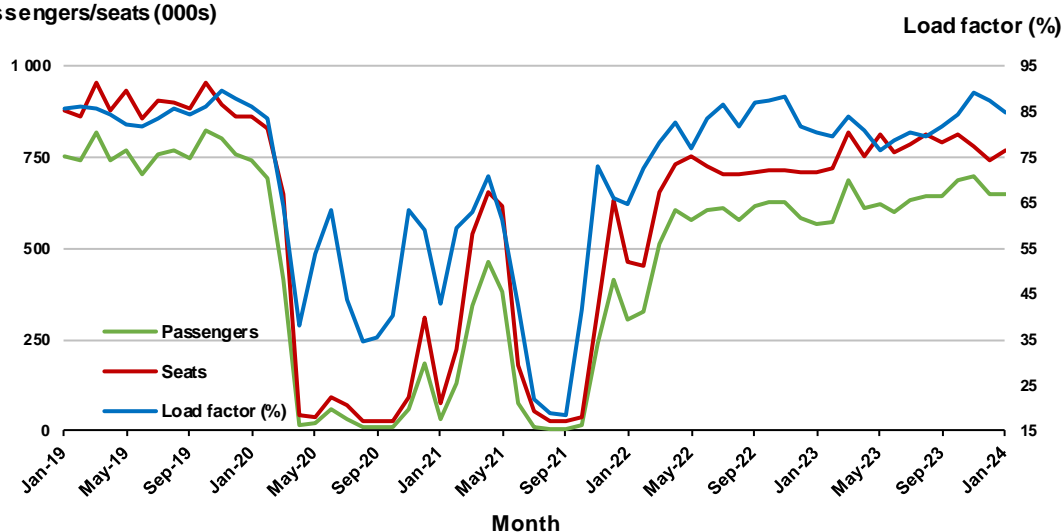
1. Melbourne - Sydney

Monthly data

	Jan 2023	Jan 2024	% Change
Passengers carried (000s)	568.7	650.3	14.3
Seats (000s)	706.9	767.3	8.5
Load factor %	80.5	84.8	4.3 *
Aircraft trips	4 068	4 428	8.8

* percentage point difference

Passengers/seats (000s)

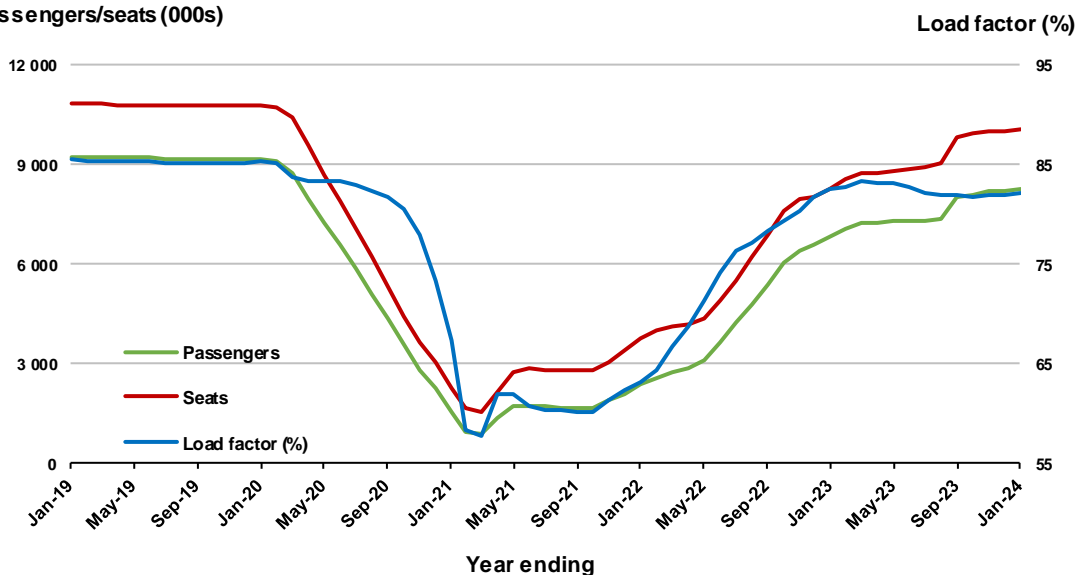


Moving annual data

	YE Jan 2023	YE Jan 2024	% Change
Passengers carried (000s)	6 839.1	8 270.6	20.9
Seats (000s)	8 284.8	10 066.3	21.5
Load factor %	82.6	82.2	-0.4 *
Aircraft trips	48 087	58 334	21.3

* percentage point difference

Passengers/seats (000s)

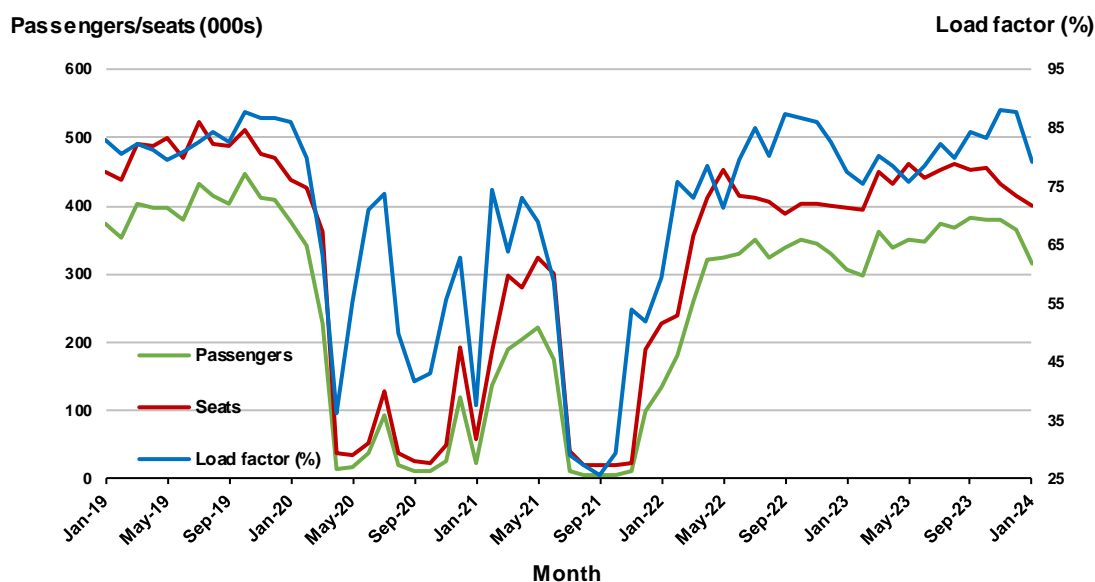


2. Brisbane - Sydney

Monthly data

	Jan 2023	Jan 2024	% Change
Passengers carried (000s)	307.7	316.5	2.8
Seats (000s)	396.4	400.1	0.9
Load factor %	77.6	79.1	1.5 *
Aircraft trips	2 407	2 466	2.5

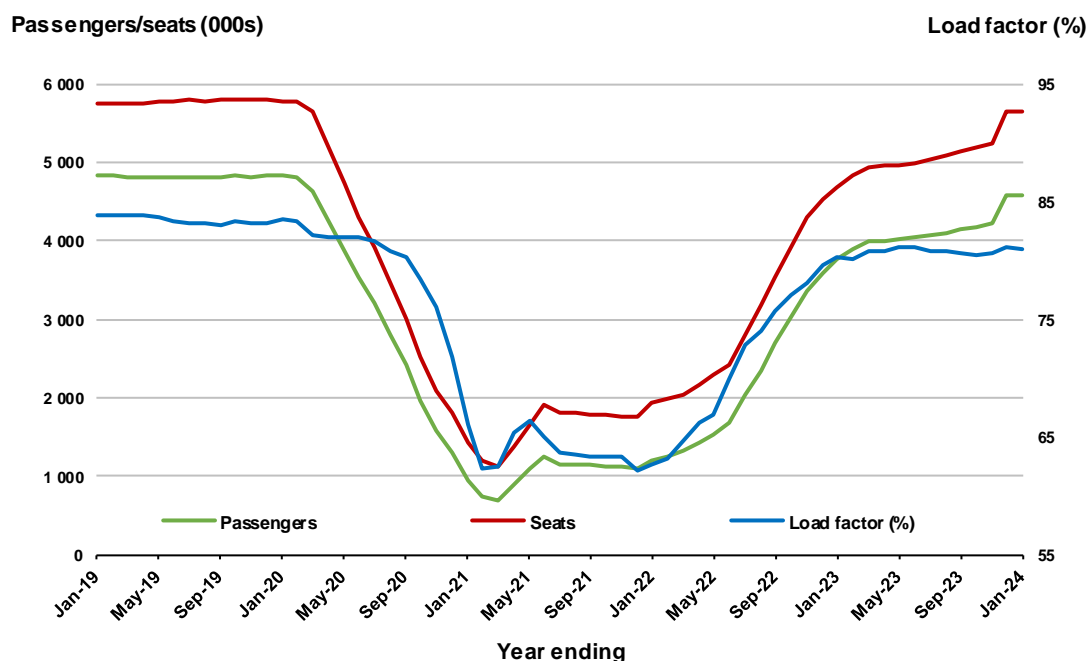
* percentage point difference



Moving annual data

	YE Jan 2023	YE Jan 2024	% Change
Passengers carried (000s)	3 766.3	4 567.1	21.3
Seats (000s)	4 687.5	5 646.6	20.5
Load factor %	80.3	80.9	0.5 *
Aircraft trips	28 863	34 699	20.2

* percentage point difference

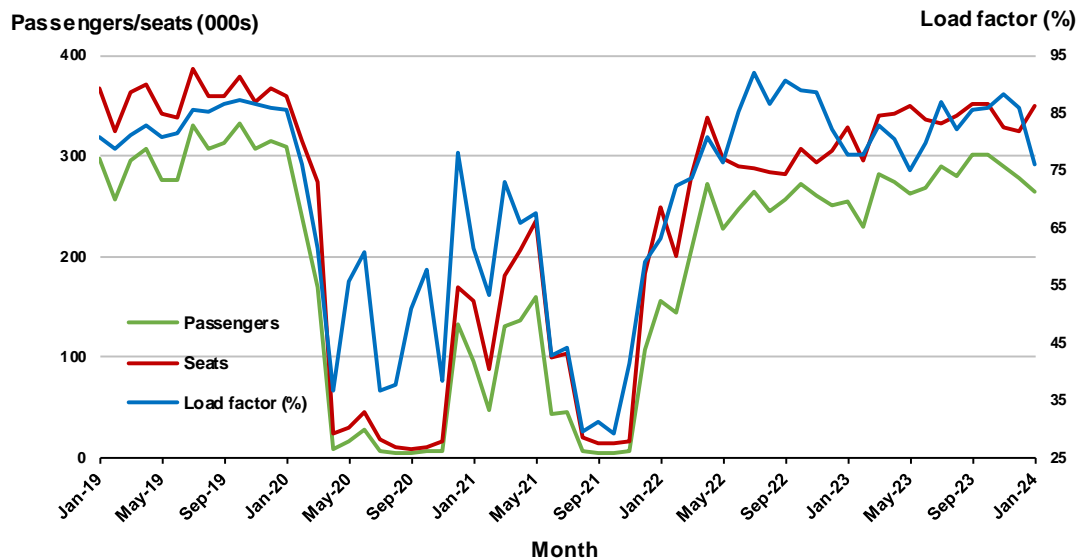


3. Brisbane - Melbourne

Monthly data

	Jan 2023	Jan 2024	% Change
Passengers carried (000s)	255.6	265.3	3.8
Seats (000s)	328.4	349.5	6.4
Load factor %	77.8	75.9	-1.9 *
Aircraft trips	1 977	2 045	3.4

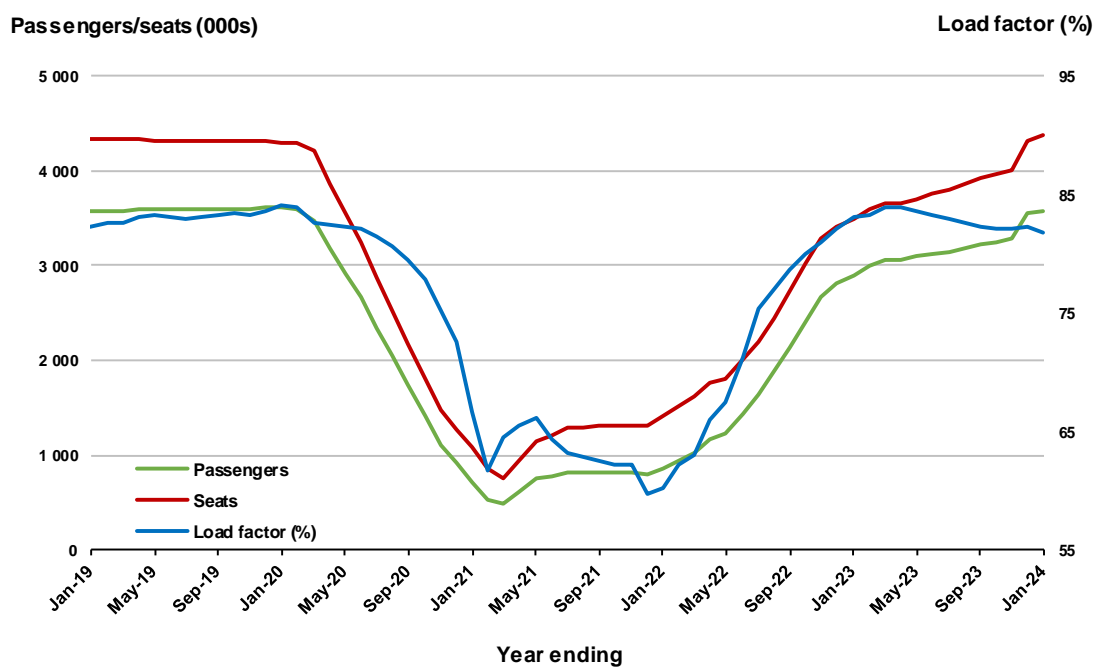
* percentage point difference



Moving annual data

	YE Jan 2023	YE Jan 2024	% Change
Passengers carried (000s)	2 905.3	3 577.1	23.1
Seats (000s)	3 496.3	4 369.9	25.0
Load factor %	83.1	81.9	-1.2 *
Aircraft trips	21 364	26 400	23.6

* percentage point difference



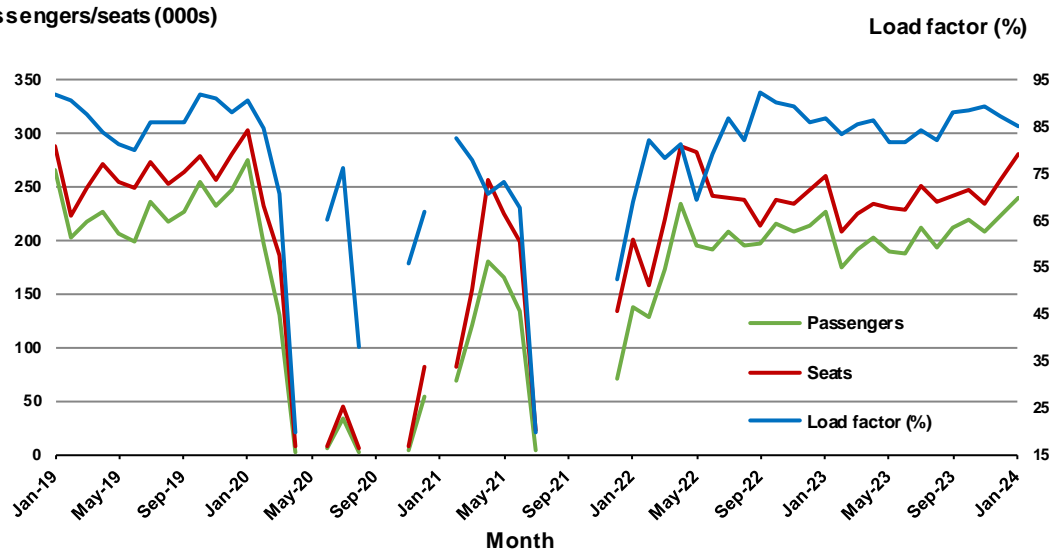
4. Gold Coast - Sydney ^(a)

Monthly data

	Jan 2023	Jan 2024	% Change
Passengers carried (000s)	226.5	239.2	5.6
Seats (000s)	260.4	280.6	7.7
Load factor %	87.0	85.2	-1.8 *
Aircraft trips	1 514	1 571	3.8

* percentage point difference

Passengers/seats (000s)



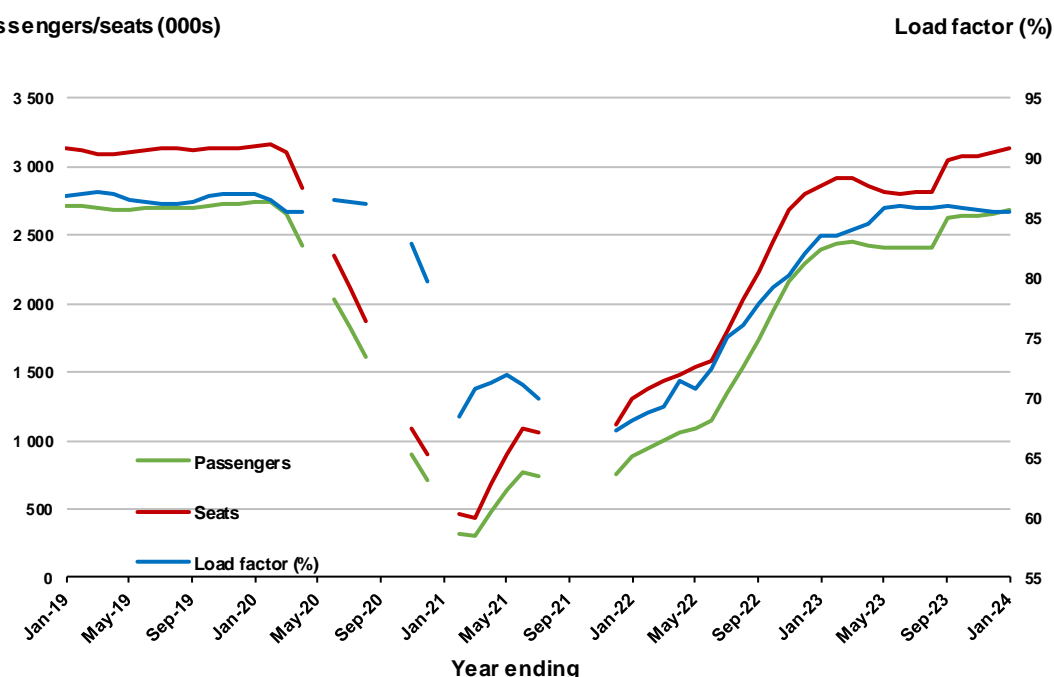
(a) May, September and October 2020 and January and August to November 2021 data not available for release.

Moving annual data

	YE Jan 2023	YE Jan 2024	% Change
Passengers carried (000s)	2 387.0	2 675.8	12.1
Seats (000s)	2 860.3	3 131.7	9.5
Load factor %	83.5	85.4	2.0 *
Aircraft trips	16 586	17 966	8.3

* percentage point difference

Passengers/seats (000s)



(a) May, September and October 2020 and January and August to November 2021 moving annual totals not available for release.

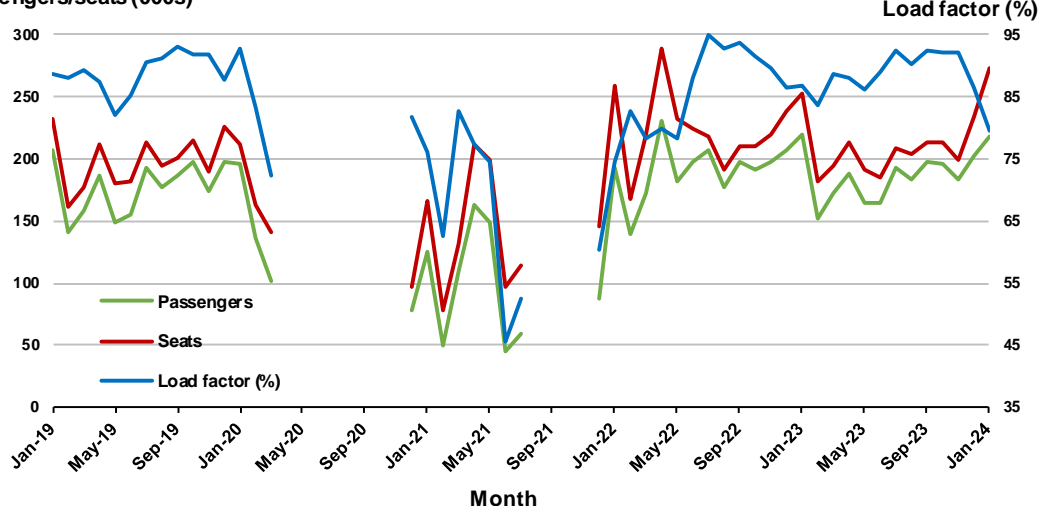
5. Gold Coast - Melbourne ^(a)

Monthly data

	Jan 2023	Jan 2024	% Change
Passengers carried (000s)	219.0	217.3	-0.8
Seats (000s)	252.2	272.7	8.1
Load factor %	86.8	79.7	-7.1 *
Aircraft trips	1 374	1 518	10.5

* percentage point difference

Passengers/seats (000s)



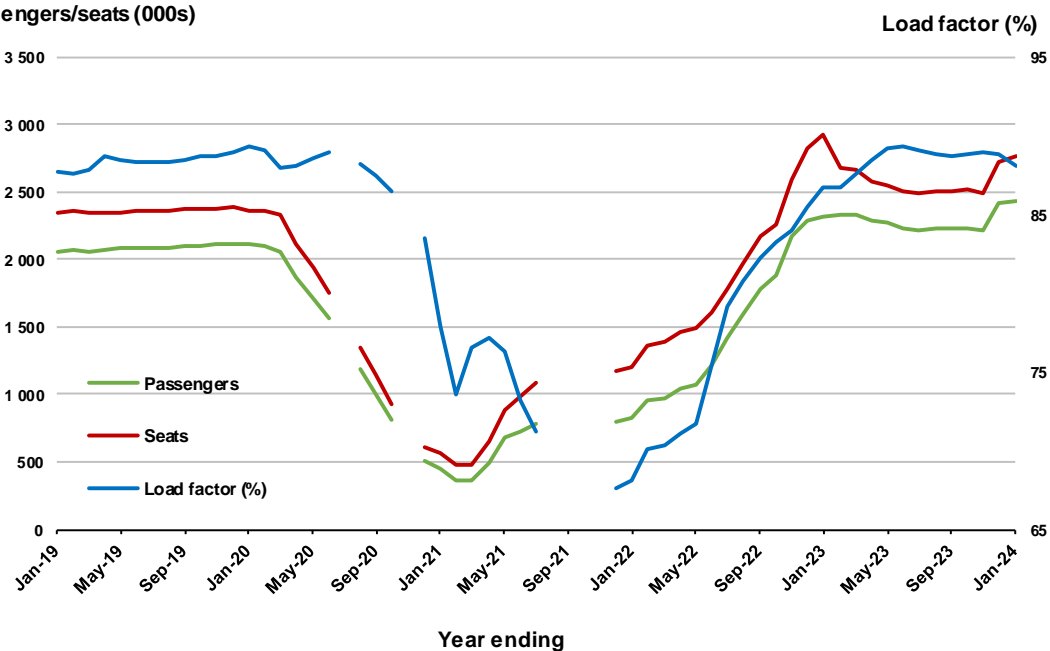
(a) April to November 2020 and August to November 2021 data not available for release.

Moving annual data

	YE Jan 2023	YE Jan 2024	% Change
Passengers carried (000s)	2 316.5	2 432.8	5.0
Seats (000s)	2 932.0	2 761.2	- 5.8
Load factor %	86.7	88.1	1.4 *
Aircraft trips	14 762	15 007	1.7

* percentage point difference

Passengers/seats (000s)



(a) April to November 2020 and August to November 2021 moving annuals are not available for release.

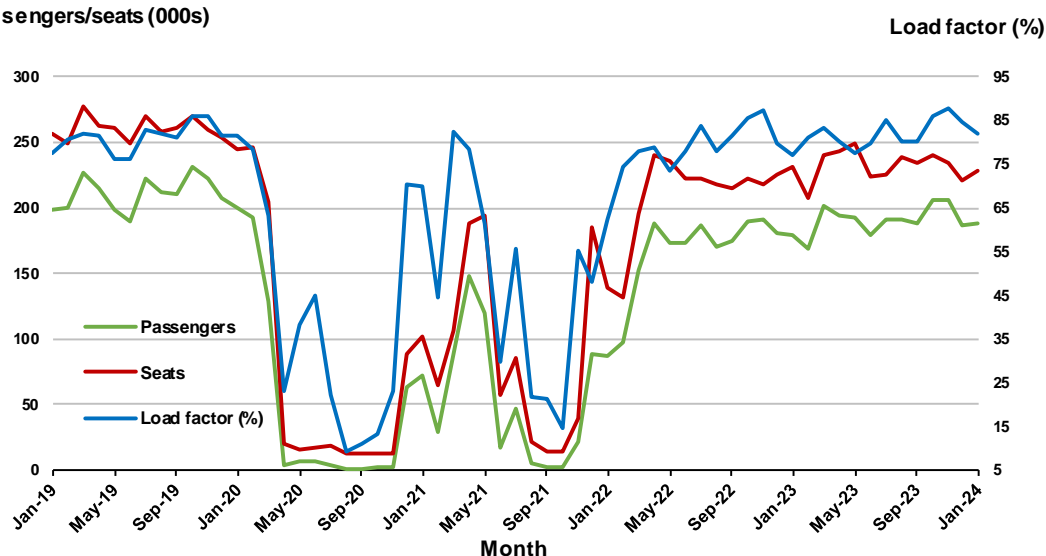
6. Adelaide - Melbourne

Monthly data

	Jan 2023	Jan 2024	% Change
Passengers carried (000s)	178.8	187.8	5.0
Seats (000s)	231.9	228.3	- 1.5
Load factor %	77.1	82.2	5.1 *
Aircraft trips	1 416	1 380	- 2.5

* percentage point difference

Passengers/seats (000s)



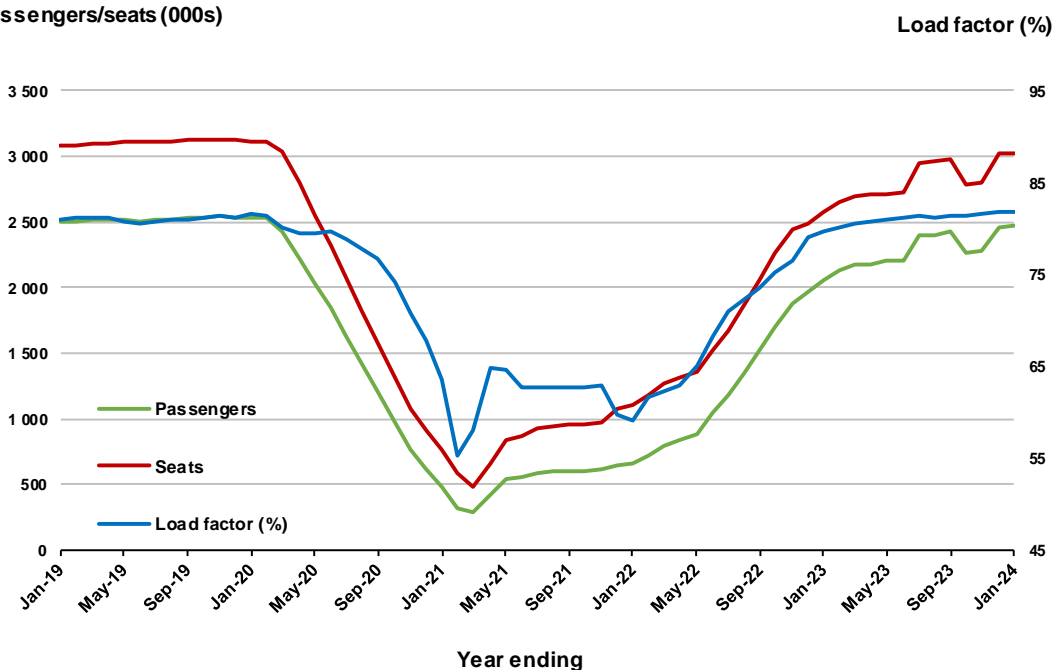
(a) April to November 2020 and August to November 2021 moving annuals are not available for release.

Moving annual data

	YE Jan 2023	YE Jan 2024	% Change
Passengers carried (000s)	2 056.8	2 471.7	20.2
Seats (000s)	2 580.7	3 018.0	16.9
Load factor %	79.7	81.9	2.2 *
Aircraft trips	15 795	18 530	17.3

* percentage point difference

Passengers/seats (000s)



(a) July and November 2020 and August to November 2021 moving annuals are not available for release.

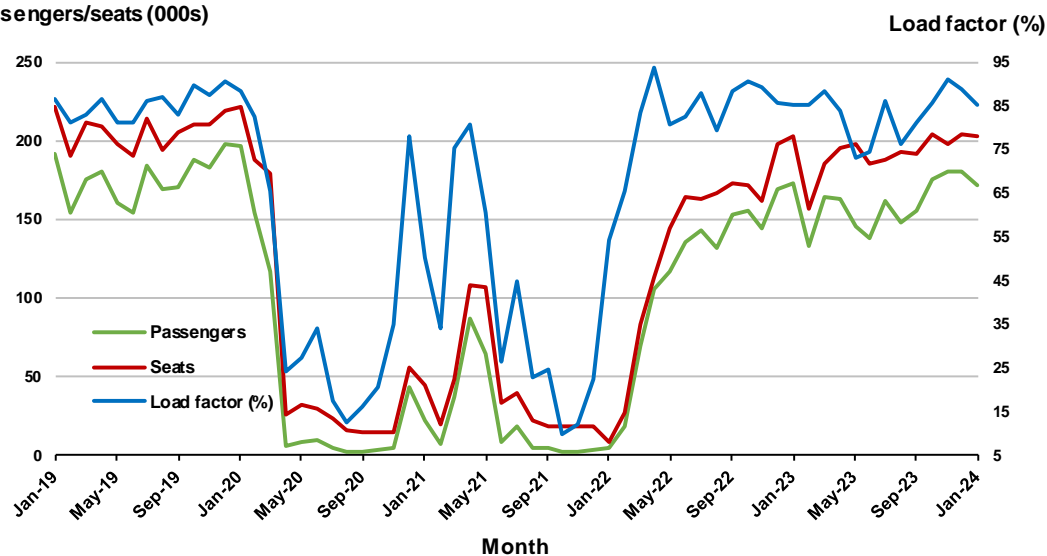
7. Melbourne - Perth

Monthly data

	Jan 2023	Jan 2024	% Change
Passengers carried (000s)	173.4	172.0	-0.8
Seats (000s)	203.2	202.2	-0.5
Load factor %	85.3	85.1	-0.2 *
Aircraft trips	1 126	1 161	3.1

* percentage point difference

Passengers/seats (000s)

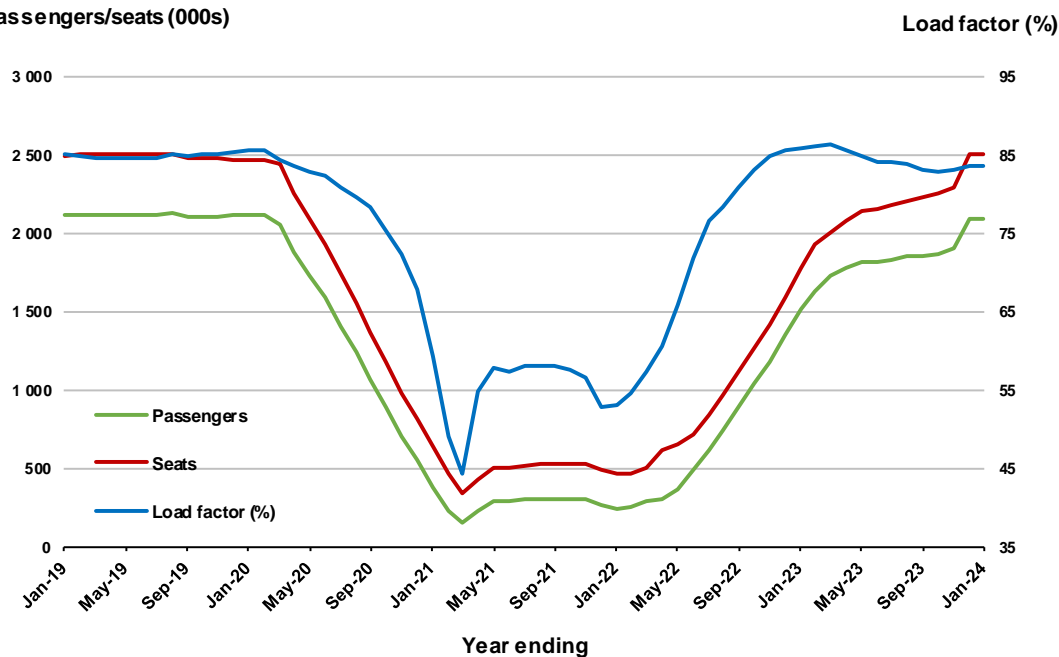


Moving annual data

	YE Jan 2023	YE Jan 2024	% Change
Passengers carried (000s)	1 516.6	2 087.8	37.7
Seats (000s)	1 778.3	2 502.3	40.7
Load factor %	85.7	83.4	-2.3 *
Aircraft trips	10 041	13 978	39.2

* percentage point difference

Passengers/seats (000s)



8. Adelaide - Sydney ^(a)

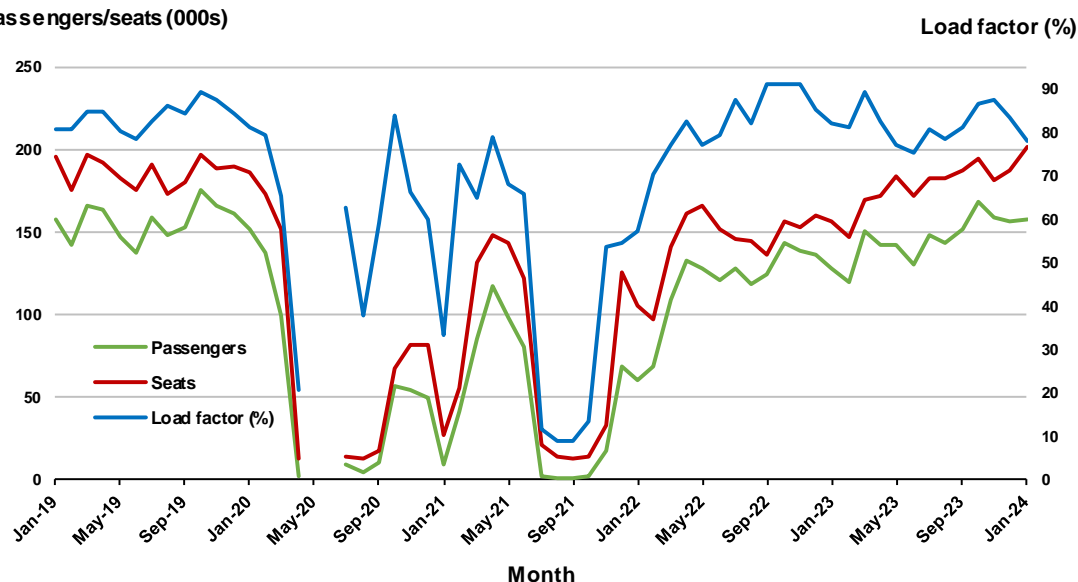
Monthly data

	Jan 2023	Jan 2024	% Change
Passengers carried (000s)	128.5	157.7	22.7
Seats (000s)	156.4	201.4	28.8
Load factor %	82.2	78.3	-3.9 *
Aircraft trips	948	1 218	28.5

.. Data not available for release.

* percentage point difference

Passengers/seats (000s)



(a) May and June 2020 data not available for release.

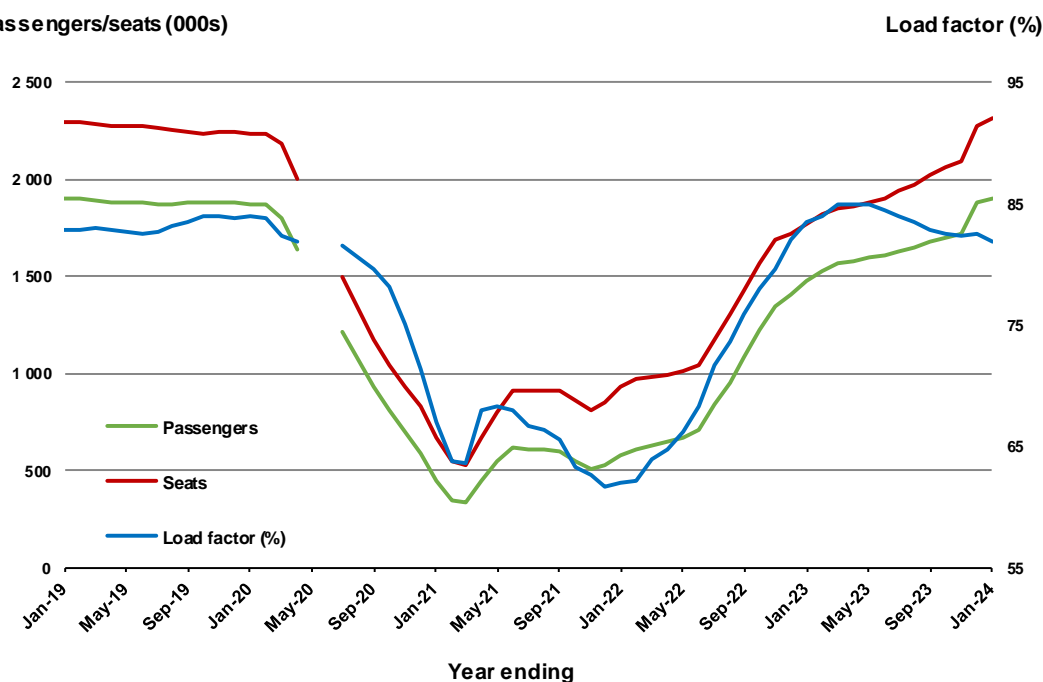
Moving annual data

	YE Jan 2023	YE Jan 2024	% Change
Passengers carried (000s)	1 478.7	1 900.9	28.6
Seats (000s)	1 772.1	2 320.4	30.9
Load factor %	83.4	81.9	-1.5 *
Aircraft trips	10 846	14 175	30.7

.. Data not available for release.

* percentage point difference

Passengers/seats (000s)



(a) May and June 2020 moving annual totals are not available for release.

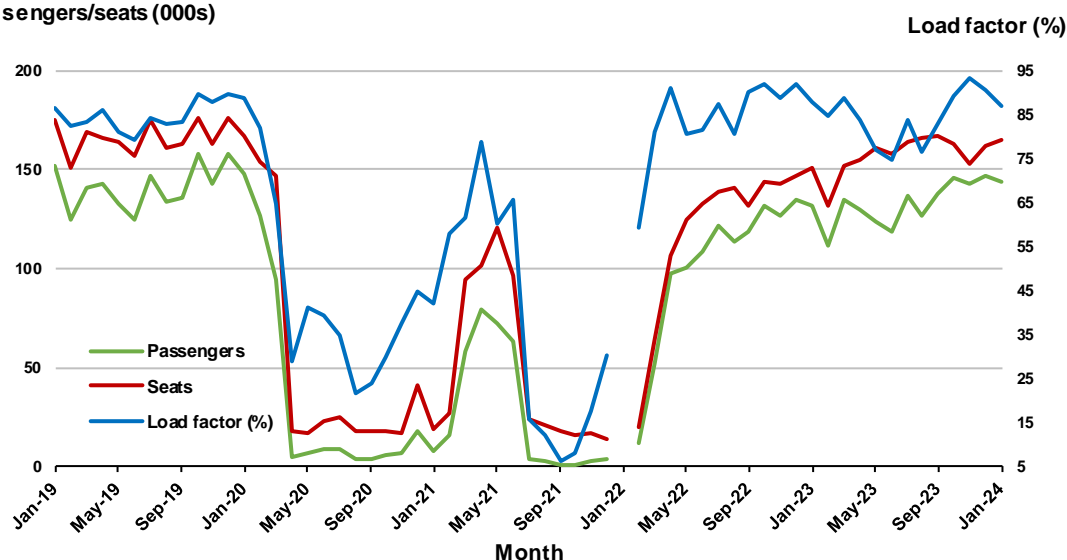
9. Perth - Sydney ^(a)

Monthly data

	Jan 2023	Jan 2024	% Change
Passengers carried (000s)	132.1	143.6	8.6
Seats (000s)	150.7	165.3	9.6
Load factor %	87.7	86.9	-0.8 *
Aircraft trips	805	905	12.4

* percentage point difference

Passengers/seats (000s)



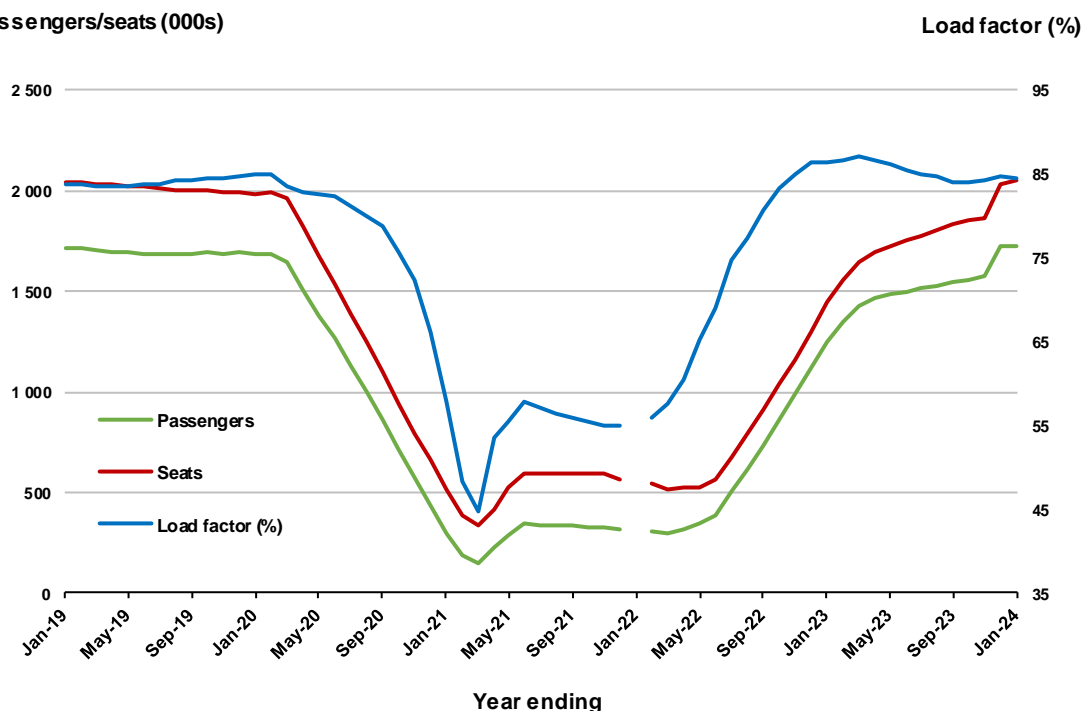
(a) January 2022 data not available for release.

Moving annual data

	YE Jan 2023	YE Jan 2024	% Change
Passengers carried (000s)	1 249.0	1 730.4	38.5
Seats (000s)	1 443.9	2 048.5	41.9
Load factor %	86.5	84.5	-2.0 *
Aircraft trips	7 568	10 642	40.6

* percentage point difference

Passengers/seats (000s)



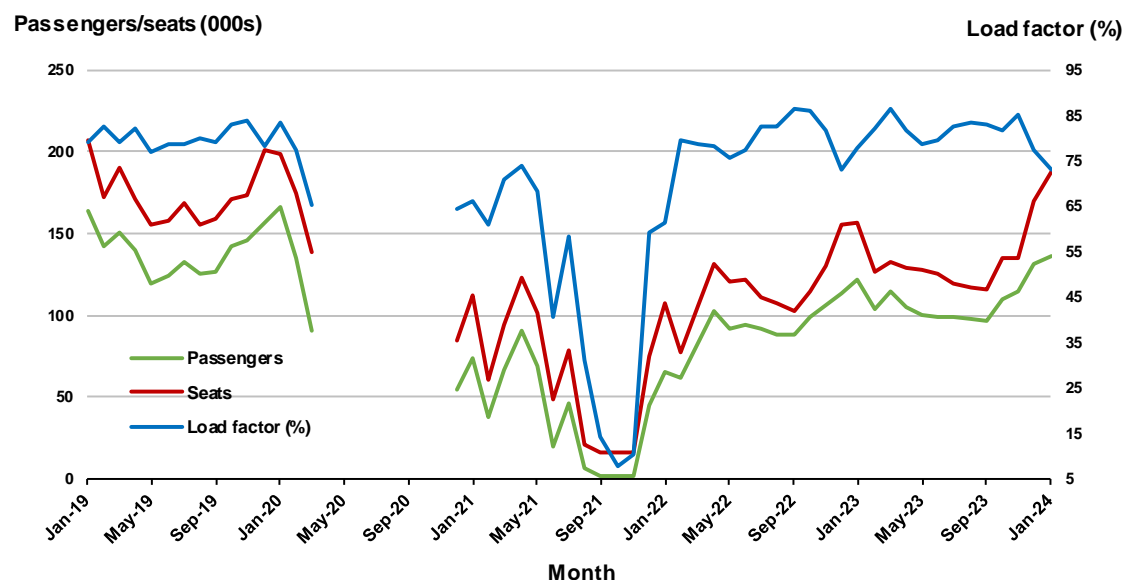
(a) January 2022 moving annual totals are not available for release.

10. Hobart - Melbourne ^(a)

Monthly data

	Jan 2023	Jan 2024	% Change
Passengers carried (000s)	122.2	136.6	11.8
Seats (000s)	156.7	187.3	19.6
Load factor %	78.0	72.9	-5.1 *
Aircraft trips	906	1 063	17.3

* percentage point difference

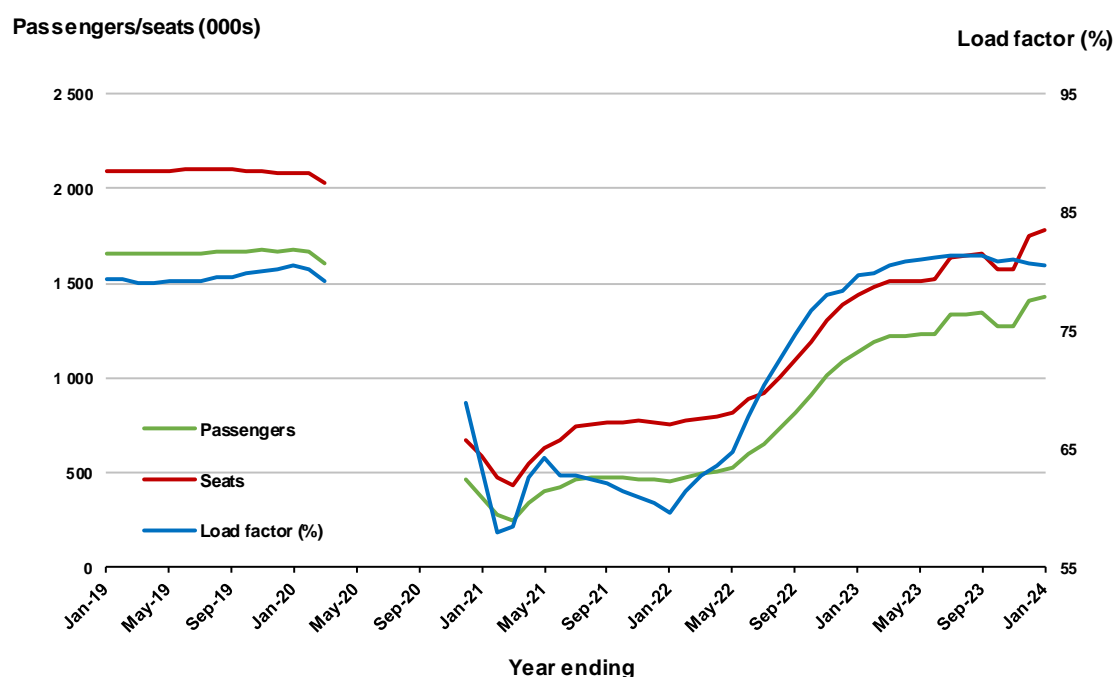


(a) April to November 2020 data not available for release.

Moving annual data

	YE Jan 2023	YE Jan 2024	% Change
Passengers carried (000s)	1 143.0	1 431.4	25.2
Seats (000s)	1 435.4	1 776.9	23.8
Load factor %	79.6	80.6	0.9 *
Aircraft trips	8 757	10 331	18.0

* percentage point difference



(a) April to November 2020 moving annual totals are not available for release.

TOP FIFTY REGIONAL AIRPORTS

Table 10: Top fifty regional airports (000s) — passenger movements, monthly

	Airport	Jan 2023	Jan 2024	% Change
1	Cairns	299.1	313.4	4.8
2	Hobart	248.5	276.7	11.4
3	Launceston	137.2	143.9	4.9
4	Townsville	118.6	115.4	-2.6
5	Darwin	107.6	110.3	2.5
6	Newcastle	85.3	92.5	8.5
7	Mackay	64.8	63.4	-2.2
8	Ballina	61.5	54.5	-11.4
9	Karratha	39.4	45.8	16.1
10	Rockhampton	38.0	44.9	18.3
11	Proserpine	37.0	43.9	18.6
12	Hamilton Island	47.5	42.6	-10.2
13	Port Hedland	37.0	38.8	5.0
14	Newman	29.3	28.0	-4.2
15	Kalgoorlie	24.1	26.7	10.7
16	Broome	25.2	25.1	-0.3
17	Alice Springs	20.4	24.7	20.8
18	Albury	15.3	22.6	47.9
19	Coffs Harbour	22.1	20.9	-5.7
20	Paraburdoo	16.3	20.8	27.4
21	Ayers Rock	16.6	18.4	10.9
22	Gladstone	14.9	17.5	16.8
23	Mildura	13.7	17.4	26.9
24	Port Macquarie	13.0	17.3	33.1
25	Mount Isa	16.2	15.7	-3.3
26	Emerald	14.1	14.4	2.5
27	Hervey Bay	11.8	14.2	20.7
28	Port Lincoln	14.4	13.9	-3.9
29	Dubbo	13.2	13.6	3.0
30	Tamworth	10.3	12.8	23.7
31	Wagga Wagga	11.7	12.7	8.2
32	Bundaberg	8.2	11.9	44.8
33	Devonport	9.8	9.2	-6.4
34	Moranbah	8.3	8.9	7.7
35	Kununurra	7.2	8.7	20.7
36	Olympic Dam	8.3	8.6	3.2
37	Geraldton	5.2	8.2	58.0
38	Thursday Island	7.4	7.4	0.1
39	Toowoomba Wellcamp	2.5	7.2	190.3
40	Weipa	6.6	6.8	2.3
41	Burnie	6.7	6.4	-4.9
42	Orange	6.1	6.2	1.4
43	Gove	5.7	6.1	7.6
44	Armidale	7.0	6.1	-12.9
45	Merimbula	6.7	6.1	-10.0
46	Norfolk Island	6.5	6.0	-7.5
47	Busselton	4.2	5.6	32.0
48	Learmonth	5.2	5.5	6.2
49	King Island	5.7	5.1	-9.2
50	Griffith	5.2	5.0	-4.8
Total top 50 regional airports		1 746.6	1 857.7	6.4
Total regional airports		1 848.7	1 959.9	6.0
Total domestic network		8 995.4	9 591.1	6.6

Note: Airport passenger movement numbers are the sum of passenger arrivals and departures at each airport.

Regional airports are defined as airports which are, according to Australian Statistical Geography Standard (ASGS), not based in Major Cities.

Table 11: Top fifty regional airports (000s) — passenger movements, annual

Airport	YE Jan 2023	YE Jan 2024	% Change
1 Cairns	3 764.1	3 984.8	5.9
2 Hobart	2 381.1	2 607.7	9.5
3 Townsville	1 565.0	1 688.1	7.9
4 Darwin	1 667.2	1 605.3	-3.7
5 Launceston	1 223.2	1 371.9	12.2
6 Newcastle	1 054.5	1 168.7	10.8
7 Mackay	847.7	908.0	7.1
8 Rockhampton	497.7	639.7	28.5
9 Ballina	628.1	632.2	0.6
10 Karratha	501.1	555.3	10.8
11 Proserpine	461.9	517.1	11.9
12 Hamilton Island	516.8	491.8	-4.8
13 Port Hedland	458.1	487.1	6.3
14 Broome	437.1	437.2	0.0
15 Newman	348.9	370.5	6.2
16 Kalgoorlie	307.9	362.3	17.7
17 Alice Springs	352.5	358.3	1.6
18 Coffs Harbour	280.0	281.2	0.4
19 Albury	215.6	266.2	23.5
20 Ayers Rock	220.7	265.0	20.1
21 Paraburdoo	212.6	250.5	17.8
22 Mount Isa	225.3	230.4	2.2
23 Gladstone	199.5	229.8	15.2
24 Mildura	185.9	228.5	22.9
25 Port Macquarie	170.2	223.5	31.3
26 Dubbo	188.4	213.0	13.1
27 Wagga Wagga	179.5	198.5	10.6
28 Emerald	174.4	195.3	12.0
29 Port Lincoln	175.6	173.4	-1.2
30 Tamworth	138.8	170.0	22.4
31 Bundaberg	105.6	155.5	47.2
32 Hervey Bay	129.0	149.5	15.9
33 Kununurra	124.4	139.3	12.0
34 Devonport	103.0	120.8	17.4
35 Armidale	102.6	111.1	8.3
36 Moranbah	100.4	110.0	9.5
37 Thursday Island	98.6	107.0	8.4
38 Orange	93.8	105.7	12.7
39 Learmonth	97.6	104.5	7.0
40 Olympic Dam	92.0	103.5	12.5
41 Geraldton	80.4	98.3	22.3
42 Gove	84.9	89.4	5.3
43 Weipa	85.4	87.3	2.2
44 Burnie	77.1	82.1	6.6
45 Toowoomba Wellcamp	48.9	81.6	66.9
46 Griffith	72.0	73.5	2.0
47 Mount Gambier	75.6	72.7	-3.8
48 Merimbula	64.2	71.5	11.3
49 Norfolk Island	70.7	68.5	-3.0
50 Roma	55.7	64.2	15.1
Total top 50 regional airports	21 341.5	23 107.2	8.3
Total regional airports	22 679.1	24 512.7	8.1
Total domestic network	104 273.7	115 142.4	10.4

Note: Airport passenger movement numbers are the sum of passenger arrivals and departures at each airport. Regional airports are defined as airports which are, according to Australian Statistical Geography Standard (ASGS), not based in Major Cities.

DOMESTIC CHARTER ACTIVITY

Table 12: Charter passengers carried and aircraft trips - monthly activity (000s)

	Jan 2023	Jan 2024	% Change
Total domestic charter passengers	312.8	364.0	16.4
Total domestic charter aircraft trips	5.6	6.4	14.3

Note: Helicopter, joyflights and sightseeing charter flights not included.

Table 13: Charter passengers carried and aircraft trips - annual activity (000s)

	YE Jan 2023	YE Jan 2024	% Change
Total domestic charter passengers	3 618.3	4 097.7	13.2
Total domestic charter aircraft trips	66.4	70.6	6.3

Note: Helicopter, joyflights and sightseeing charter flights not included.

Table 14: Domestic airports - charter activity - monthly (000s)

	Jan 2023	Jan 2024	% Change
Total domestic charter passenger movements	625.6	728.1	16.4
Total domestic charter aircraft movements	11.2	12.8	14.3
Perth airport charter passenger movements	228.7	271.3	18.6
Perth airport charter aircraft movements	3.8	4.3	13.6

Note: Helicopter, joyflights and sightseeing charter flights not included.

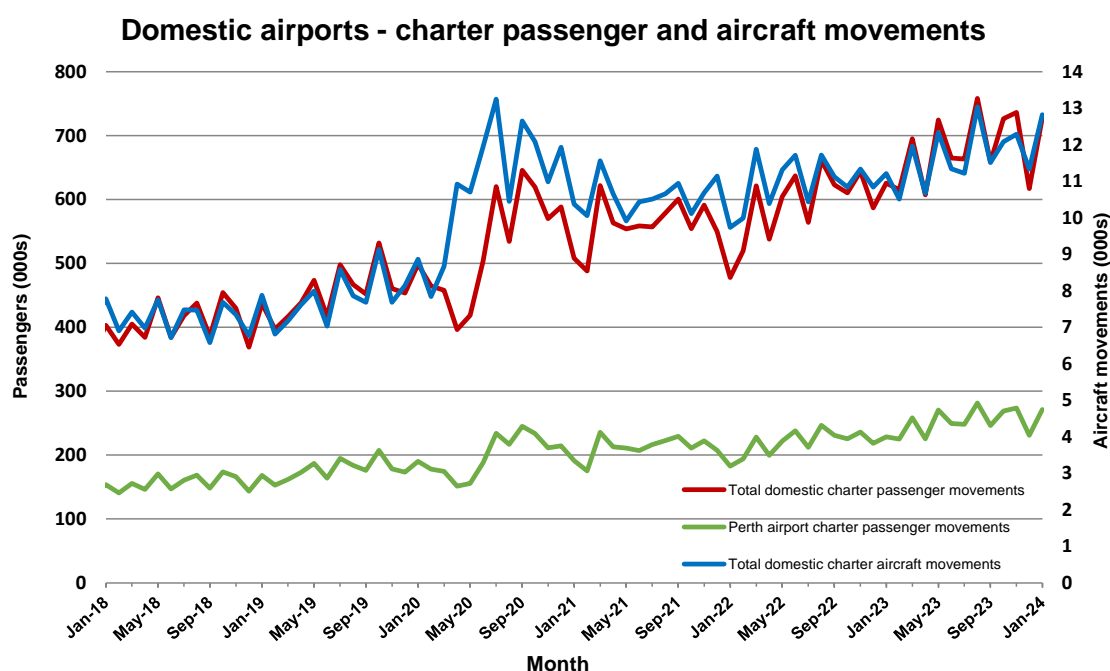
Charter passenger and aircraft movement numbers are the sum of arrivals and departures at each airport.

Table 15: Domestic airports - charter activity - annual (000s)

	YE Jan 2023	YE Jan 2024	% Change
Total domestic charter passenger movements	7 236.6	8 195.4	13.2
Total domestic charter aircraft movements	132.8	141.1	6.3
Perth airport charter passenger movements	2 680.4	3 049.6	13.8
Perth airport charter aircraft movements	44.8	47.7	6.4

Note: Helicopter, joyflights and sightseeing charter flights not included.

Charter passenger and aircraft movement numbers are the sum of arrivals and departures at each airport.



DEFINITIONS

Aircraft Trips	The number of flight stages. A return flight counts as two aircraft trips.
Airport Movements	Airport movements (passenger and cargo) are measured once on arrival and once on departure. Each domestic trip generates two movements at airports. For example, a trip from Melbourne to Sydney will be counted twice, as a departure at Melbourne and as an arrival at Sydney. At the national level, the sum of all domestic airport traffic will therefore be equal to twice the number of trips undertaken.
Available Seat Kilometres (ASKs)	Calculated by multiplying the number of seats available on each flight stage, by the distance in kilometres between the ports. The distances used are Great Circle Distances.
City-Pair	The ports shown make up the city-pair route. Passenger movements shown for a city pair reflect total traffic in both directions.
Flight Stage	The operation of an aircraft from take-off to landing.
Load Factor	The total revenue passenger kilometres performed as a percentage of the total available seat kilometres.
Passengers Carried	Revenue passengers carried.
Regular Public Transport Services (RPT)	All air service operations in which aircraft are available for the transport of members of the public and are conducted in accordance with fixed schedules. It does not include charter or other non-scheduled operations.
Revenue Passengers	All passengers paying any fare. Frequent flyer redemption travellers are regarded as revenue passengers.
Revenue Passenger Kilometres (RPKs)	Calculated by multiplying the number of revenue passengers travelling on each flight stage, by the distance in kilometres between the ports. The distances used are Great Circle Distances.
Traffic on board by stages (TOB)	The total of all traffic (revenue passengers) on each flight stage between two directly connected airports.
..	Not available for confidentiality or other reasons.
NA	Not applicable.