



Australian Government

**Department of Infrastructure, Transport,
Regional Development, Communications and the Arts**
Bureau of Infrastructure and Transport Research Economics

STATISTICAL REPORT



bitre

Aviation

**Domestic aviation activity
December 2023**

The Department of Infrastructure, Transport, Regional Development, Communications and the Arts acknowledges the Traditional Custodians of Country of the land on which we work and live.

We recognise and respect the continuing connections to land, waters and communities.

We pay our respects to them and their cultures and to their Elders both past and present and to all Aboriginal and Torres Strait Islander people.

© Commonwealth of Australia 2024

ISSN: 1832 - 1968

Ownership of intellectual property rights in this publication

Unless otherwise noted, copyright (and any other intellectual property rights, if any) in this publication is owned by the Commonwealth of Australia (referred to below as the Commonwealth).

Disclaimer

The material contained in this publication is made available on the understanding that the Commonwealth is not providing professional advice, and that users exercise their own skill and care with respect to its use, and seek independent advice if necessary.

The Commonwealth makes no representations or warranties as to the contents or accuracy of the information contained in this publication. To the extent permitted by law, the Commonwealth disclaims liability to any person or organisation in respect of anything done, or omitted to be done, in reliance upon information contained in this publication.

Creative Commons licence

With the exception of (a) the Coat of Arms; and (b) the Department of Infrastructure, Transport, Regional Development, Communications and the Arts' photos and graphics, copyright in this publication is licensed under a Creative Commons Attribution 3.0 Australia Licence.

Creative Commons Attribution 3.0 Australia Licence is a standard form licence agreement that allows you to copy, communicate and adapt this publication provided that you attribute the work to the Commonwealth and abide by the other licence terms. A summary of the licence terms is available from <http://creativecommons.org/licenses/by/3.0/au/deed.en>.

The full licence terms are available from <http://creativecommons.org/licenses/by/3.0/au/legalcode>.

Use of the Coat of Arms

The Department of the Prime Minister and Cabinet sets the terms under which the Coat of Arms is used. Please refer to the Department's Commonwealth Coat of Arms and Government branding web page <http://www.dpmc.gov.au/guidelines/index.cfm#brand> and, in particular, the Guidelines on the use of the Commonwealth Coat of Arms publication.

An appropriate citation for this report is:

Bureau of Infrastructure and Transport Research Economics (BITRE), 2024, Domestic aviation activity, Statistical Report, BITRE, Canberra ACT.

Contact us

This publication is available in PDF format. All other rights are reserved, including in relation to any Departmental logos or trade marks which may exist. For enquiries regarding the licence and any use of this publication, please contact:

Bureau of Infrastructure and Transport Research Economics (BITRE)
Department of Infrastructure, Transport, Regional Development, Communications and the Arts
GPO Box 501, Canberra ACT 2601, Australia

Email: bitre@infrastructure.gov.au

Website: www.bitre.gov.au

Inquiries

Nebojsa.Pavlovic@infrastructure.gov.au (02) 6136 8282

FOREWORD

This report provides an overview of domestic (including charter) commercial aviation activity in Australia for the month of December 2023.

The data covers revenue passengers carried by Australian-registered operators of scheduled regular public transport services over Australian flight stages and fixed-wing charter operators. These estimates include passengers carried between domestic airports on international flights operated by these carriers. The passengers carried refer to traffic on board by stages.

Estimates of passengers and aircraft movements for charter aviation are included in this publication, where BITRE confidentiality standards are met.

Individual routes shown are restricted to those with an average exceeding 8,000 passengers per month over the previous six months where two or more airlines operate in competition. However, for the period from December 2021 through to December 2022, the major airlines (Qantas Group, Virgin Australia and Rex Airlines) agreed to publication of the top 35 routes based on pre-COVID activity (December 2019) whether or not they were meeting the above criteria. From January 2023, the passenger load and dual competition requirements were reinstated due to the continued recovery of passenger numbers.

Information on the total network for the month of December 2023 and on the Regular Public Transport (RPT) network for the month of December 2023 is presented on page 2, with estimates for the year ended December 2023 presented on page 3.

Detailed information on individual routes can be found in the RPT summary pages 4-13 of this publication. For the month of December 2023, there are 61 individual routes published.

The top ten airports in terms of RPT passenger movements are shown on page 14.

Data on domestic RPT cargo movements at the top five cargo airports are provided on page 15. The table includes cargo carried on passenger flights operated by the Qantas group (including Jetstar), Virgin Australia, Air North and Skippers as well as the cargo carried by dedicated freighter aircraft operated by Qantas Freight and Team Global Express (formerly Toll).

The long-term trends for the top ten competitive RPT routes are presented graphically on pages 16-25.

Domestic RPT passenger movements at regional airports are shown on pages 26-27.

Tables providing estimates of domestic charter aviation activity are shown on page 28. BITRE confidentiality standards restrict publication of detailed estimates for individual Australian airports, with the exception of Perth Airport.

A list of definitions can be found on page 29.

This report was prepared by the Aviation Statistics Section of the Bureau of Infrastructure and Transport Research Economics with data provided by airlines.

Estimates are included where data were not available and data presented in this publication may contain revisions to previously published data.

Where figures have been rounded, discrepancies may occur between sums of component items and totals, and in percentage changes which are derived from figures prior to rounding.

CONTENTS

Highlights	1
Total network.....	2
RPT network	2
Top competitive routes.....	4
Top ten airports – passenger movements.....	14
Top five airports – cargo movements.....	15
Top ten routes	16
1. Melbourne – Sydney	16
2. Brisbane – Sydney.....	17
3. Brisbane – Melbourne	18
4. Gold Coast – Sydney	19
5. Gold Coast - Melbourne	20
6. Adelaide – Melbourne	21
7. Melbourne – Perth	22
8. Adelaide – Sydney	23
9. Perth – Sydney	24
10. Hobart – Melbourne	25
Top fifty regional airports	26
Domestic charter activity.....	28
Definitions	29

This page is intentionally left blank.

HIGHLIGHTS

There were 5.21 million passengers carried on Australian domestic commercial aviation (including charter operations) in December 2023, an increase of 7.3 per cent on December 2022.

4.90 million passengers were carried on RPT flights in December 2023, an increase of 7.5 per cent compared to December 2022.

For the month of December 2023, there were 50.3 thousand RPT aircraft trips, up 1.4 per cent compared to December 2022.

For the year ending December 2023 there were 57.27 million RPT passengers, an increase of 14.1 per cent on the year ending December 2022.

RPT revenue passenger kilometres (RPKs) performed were 5.89 billion for the month, compared with 5.53 billion in December 2022 (up 6.5 per cent).

Capacity, measured by available seat kilometres (ASKs), increased to 7.22 billion in December 2023 compared to 6.92 billion in December 2022 (up 4.2 per cent).

The industry wide load factor (RPKs/ASKs) increased from 79.9 per cent in December 2022 to 81.6 per cent in December 2023. The highest load factor (90.4 per cent) was recorded on the Perth - Sydney route while the lowest load factor (43.9 per cent) was recorded on the Geraldton – Perth route.

For the month of December 2023, Melbourne – Sydney was Australia's busiest RPT route with 649.2 thousand passengers, followed by Brisbane – Sydney with 363.7 thousand passengers and Brisbane – Melbourne with 278.5 thousand passengers.

Sydney was Australia's busiest domestic airport with 2.09 million passenger movements in December 2023, followed by Melbourne with 2.05 million passenger movements and Brisbane with 1.38 million passenger movements.

Total cargo movements at Australian airports on domestic RPT flights were 30.0 thousand tonnes in December 2023, a decrease of 4.1 per cent compared with December 2022.

In December 2023, there were 1.99 million domestic passenger movements through regional airports, compared to 1.89 million in December 2022, an increase of 5.7 per cent. Out of the top 50 regional airports, the strongest increase was recorded at Toowoomba Wellcamp Airport (up 192.1 per cent on December 2022), while the largest decrease was recorded at Mount Gambier Airport (down 9.1 per cent on December 2022).

Fixed-wing charter operators carried 308.5 thousand passengers in December 2023, an increase of 5.1 per cent compared with December 2022. Perth Airport accounted for 37.4 per cent of all charter passengers in Australia.

TOTAL NETWORK

Summary of monthly commercial aviation activity

	Dec 2022	Dec 2023	% Change
Total passengers carried (millions)	4.86	5.21	7.3
Aircraft trips (000s)	55.0	56.0	1.7

Note: Regular Public Transport and charter aviation activity
Helicopter, joy flights and sightseeing charter flights not included.

RPT NETWORK

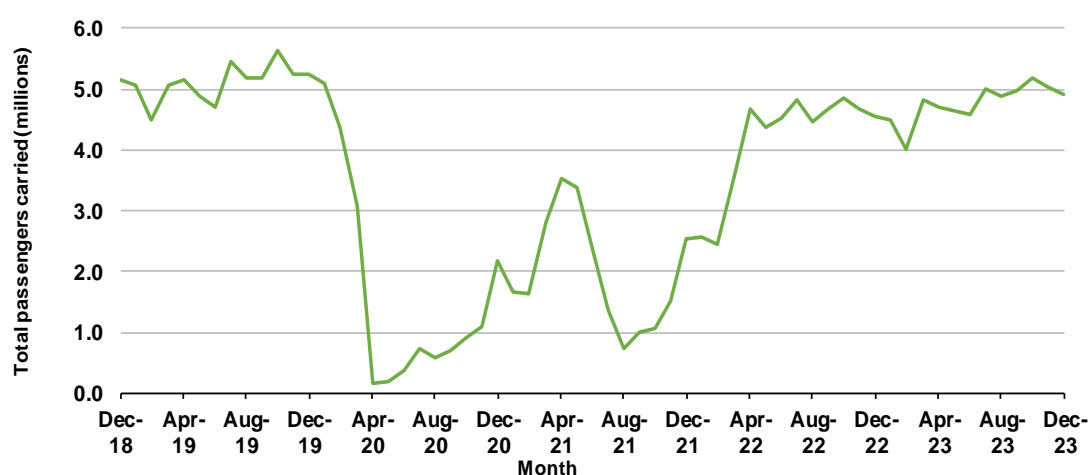
Summary of monthly RPT activity

	Dec 2022	Dec 2023	% Change
Total passengers carried (millions)	4.56	4.90	7.5
Revenue passenger kilometres (billions)	5.53	5.89	6.5
Available seats (millions)	5.90	6.15	4.1
Available seat kilometres (billions)	6.92	7.22	4.2
Load factor %	79.9	81.6	1.7 *
Aircraft trips (000s)	49.6	50.3	1.4

* percentage point difference

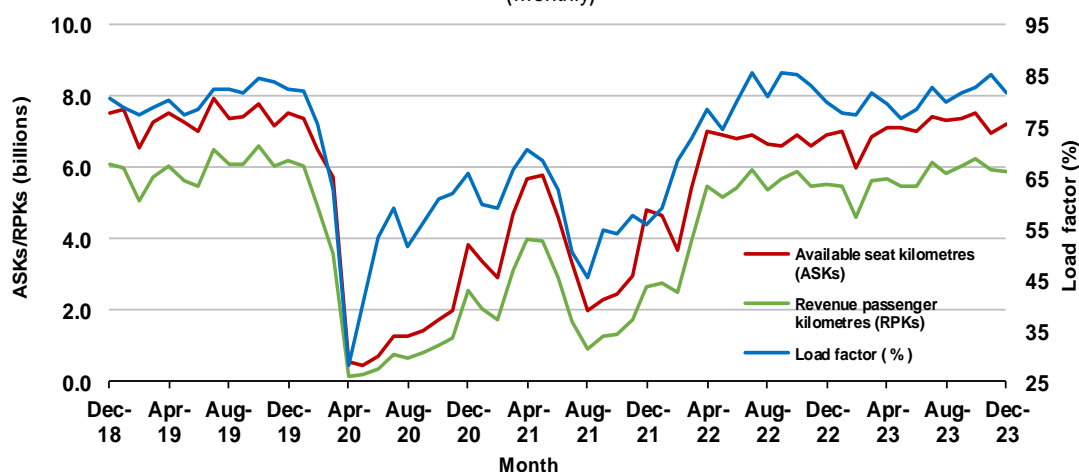
Domestic RPT passenger traffic

(monthly)



RPT Network utilisation

(monthly)



TOTAL NETWORK

Summary of annual commercial aviation activity

	YE Dec 2022	YE Dec 2023	% Change
Total passengers carried (millions)	53.74	61.32	14.1
Aircraft trips (000s)	623.8	682.0	9.3

Note: Regular Public Transport and charter aviation activity
Helicopter, joy flights and sightseeing charter flights not included.

RPT NETWORK

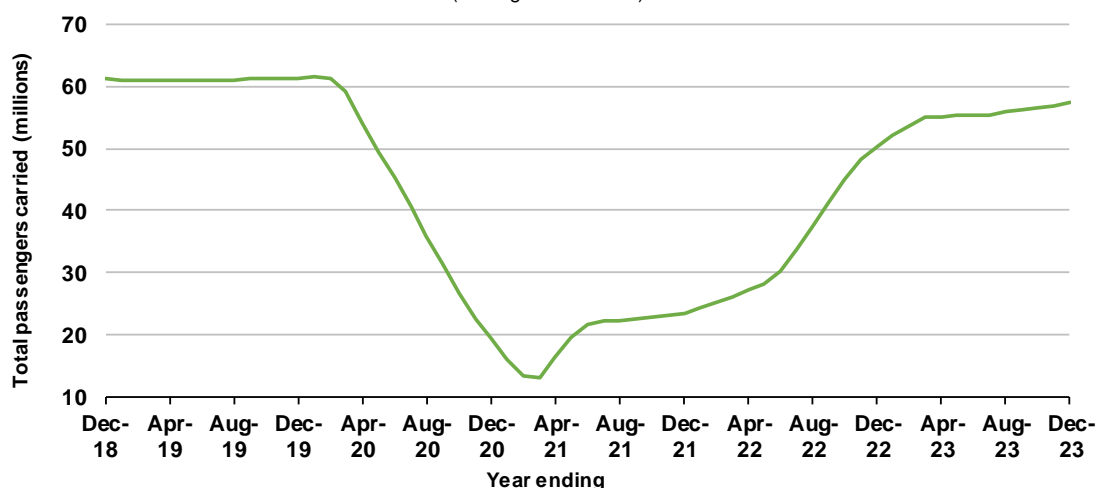
Summary of annual RPT activity

	YE Dec 2022	YE Dec 2023	% Change
Total passengers carried (millions)	50.20	57.27	14.1
Revenue passenger kilometres (billions)	59.17	68.42	15.6
Available seats (millions)	65.64	73.18	11.5
Available seat kilometres (billions)	75.06	85.01	13.3
Load factor %	78.8	80.5	1.6 *
Aircraft trips (000s)	558.2	612.2	9.7

* percentage point difference

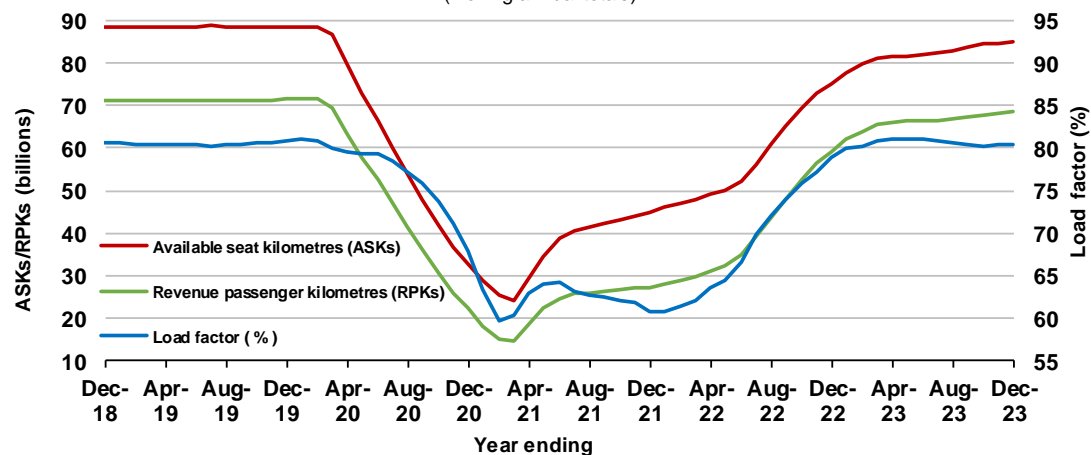
Domestic RPT passenger traffic

(moving annual totals)



RPT Network utilisation

(moving annual totals)



TOP COMPETITIVE ROUTES

Table 1: Passengers carried (000s) — annual activity

	City-Pair	YE Dec 2022	YE Dec 2023	% Change
1	Melbourne - Sydney	6 572.7	8 202.4	24.8
2	Brisbane - Sydney	3 594.3	4 579.5	27.4
3	Brisbane - Melbourne	2 806.5	3 562.7	26.9
4	Gold Coast - Sydney	2 298.5	2 649.8	15.3
5	Adelaide - Melbourne	1 964.7	2 464.5	25.4
6	Gold Coast - Melbourne	2 291.1	2 422.1	5.7
7	Melbourne - Perth	1 347.8	2 085.5	54.7
8	Adelaide - Sydney	1 410.6	1 879.7	33.3
9	Perth - Sydney	1 118.8	1 721.8	53.9
10	Hobart - Melbourne	1 086.4	1 408.1	29.6
11	Brisbane - Cairns	1 136.6	1 341.3	18.0
12	Brisbane - Perth	737.3	1 099.8	49.2
13	Canberra - Melbourne	850.0	1 073.6	26.3
14	Cairns - Sydney	822.6	959.7	16.7
15	Brisbane - Townsville	818.3	943.8	15.3
16	Launceston - Melbourne	679.2	886.7	30.5
17	Adelaide - Brisbane	713.2	885.7	24.2
18	Cairns - Melbourne	815.1	870.9	6.8
19	Sunshine Coast - Sydney	684.8	821.6	20.0
20	Melbourne - Sunshine Coast	724.3	807.7	11.5
21	Hobart - Sydney	649.8	801.4	23.3
22	Brisbane - Mackay	698.4	790.1	13.1
23	Adelaide - Perth	486.3	709.4	45.9
24	Brisbane - Canberra	593.4	684.4	15.3
25	Canberra - Sydney	536.5	645.7	20.3
26	Karratha - Perth	491.8	582.3	18.4
27	Ballina - Sydney	504.5	581.7	15.3
28	Brisbane - Rockhampton	443.1	548.2	23.7
29	Brisbane - Newcastle	450.2	537.8	19.5
30	Perth - Port Hedland	448.3	513.8	14.6
31	Melbourne - Newcastle	382.0	454.5	19.0
32	Newman - Perth	341.8	397.1	16.2
33	Broome - Perth	366.2	387.7	5.9
34	Kalgoorlie - Perth	301.9	383.6	27.1
35	Launceston - Sydney	274.8	361.1	31.4
36	Brisbane - Darwin	328.8	345.5	5.1
37	Brisbane - Hobart	291.2	323.2	11.0
38	Darwin - Melbourne	304.3	304.2	-0.1
39	Brisbane - Proserpine	293.5	298.7	1.8
40	Adelaide - Gold Coast	223.3	283.0	26.8
41	Hamilton Island - Sydney	233.4	267.9	14.8
42	Coffs Harbour - Sydney	208.8	232.2	11.2
43	Brisbane - Gladstone	193.1	229.3	18.8
44	Adelaide - Canberra	154.0	209.3	35.9
45	Brisbane - Emerald	158.8	197.3	24.2
46	Canberra - Gold Coast	144.3	190.7	32.1
47	Dubbo - Sydney	147.4	190.1	29.0
48	Adelaide - Port Lincoln	170.3	188.8	10.9
49	Darwin - Perth	149.9	184.1	22.8
50	Port Macquarie - Sydney	142.8	180.1	26.1

continued

Table 1: (continued) Passengers carried (000s) — annual activity

	City-Pair	YE Dec 2022	YE Dec 2023	% Change
51	Brisbane - Hamilton Island	175.0	179.7	2.7
52	Albury - Sydney	151.0	178.4	18.1
53	Melbourne - Mildura	139.7	178.1	27.5
54	Brisbane - Launceston	169.4	169.7	0.2
55	Sydney - Wagga Wagga	136.6	166.0	21.5
56	Brisbane - Mount Isa	136.1	154.6	13.6
57	Devonport - Melbourne	97.6	132.0	35.2
58	Adelaide - Alice Springs	100.1	124.1	24.0
59	Brisbane - Bundaberg	..	121.3	NA
60	Brisbane - Moranbah	97.9	116.8	19.3
61	Geraldton - Perth	..	92.9	NA
Total domestic network		50 197.5	57 273.4	14.1

.. Data not available for release.

Table 2: Passengers carried (000s) — monthly activity

	City-Pair	Dec 2022	Dec 2023	% Change
1	Melbourne - Sydney	582.0	649.2	11.5
2	Brisbane - Sydney	328.9	363.7	10.6
3	Brisbane - Melbourne	250.9	278.5	11.0
4	Gold Coast - Sydney	213.2	222.9	4.5
5	Gold Coast - Melbourne	206.6	202.8	-1.8
6	Adelaide - Melbourne	180.5	187.3	3.8
7	Melbourne - Perth	169.7	180.6	6.4
8	Adelaide - Sydney	136.5	156.4	14.6
9	Perth - Sydney	135.0	146.7	8.7
10	Hobart - Melbourne	113.3	130.8	15.4
11	Brisbane - Cairns	97.5	94.1	-3.5
12	Brisbane - Perth	90.4	92.0	1.8
13	Canberra - Melbourne	76.2	82.8	8.7
14	Launceston - Melbourne	71.8	82.4	14.8
15	Adelaide - Brisbane	66.6	76.3	14.6
16	Melbourne - Sunshine Coast	60.0	74.8	24.6
17	Hobart - Sydney	66.5	72.6	9.2
18	Brisbane - Townsville	71.0	72.3	1.8
19	Sunshine Coast - Sydney	64.7	71.3	10.1
20	Cairns - Sydney	80.2	65.9	-17.8
21	Adelaide - Perth	55.3	60.4	9.3
22	Brisbane - Mackay	61.7	59.4	-3.7
23	Cairns - Melbourne	60.0	57.9	-3.4
24	Brisbane - Canberra	54.0	51.6	-4.3
25	Canberra - Sydney	43.1	47.4	9.8
26	Ballina - Sydney	47.1	46.4	-1.5
27	Karratha - Perth	38.6	42.0	8.7
28	Brisbane - Newcastle	38.0	41.2	8.3
29	Brisbane - Rockhampton	38.6	40.0	3.7
30	Melbourne - Newcastle	33.3	37.6	13.1
31	Launceston - Sydney	30.2	34.7	14.8
32	Perth - Port Hedland	34.4	34.3	-0.3
33	Brisbane - Hobart	29.4	31.7	8.0
34	Brisbane - Proserpine	24.0	27.0	12.3
35	Kalgoorlie - Perth	24.3	26.3	8.3
36	Newman - Perth	25.9	25.8	-0.5
37	Adelaide - Gold Coast	22.8	24.7	8.5
38	Brisbane - Darwin	24.1	24.0	-0.2
39	Broome - Perth	23.9	23.6	-1.5
40	Hamilton Island - Sydney	21.7	21.1	-2.6
41	Darwin - Melbourne	20.8	20.9	0.5
42	Brisbane - Launceston	17.1	16.7	-2.4
43	Canberra - Gold Coast	14.9	16.6	11.9
44	Coffs Harbour - Sydney	18.4	16.5	-10.4
45	Brisbane - Gladstone	15.3	16.4	7.2
46	Brisbane - Hamilton Island	15.4	15.6	0.9
47	Adelaide - Canberra	15.9	14.5	-8.3
48	Adelaide - Port Lincoln	14.9	14.5	-2.9
49	Port Macquarie - Sydney	13.6	14.0	3.0
50	Melbourne - Mildura	11.5	13.6	18.1

continued

Table 2: (continued) Passengers carried (000s) — monthly activity

	City-Pair	Dec 2022	Dec 2023	% Change
51	Dubbo - Sydney	12.4	13.6	9.9
52	Darwin - Perth	12.9	13.5	4.6
53	Brisbane - Emerald	13.0	13.4	2.5
54	Albury - Sydney	12.6	13.1	3.6
55	Sydney - Wagga Wagga	12.0	11.9	-1.5
56	Brisbane - Mount Isa	10.9	10.9	-0.6
57	Devonport - Melbourne	10.7	10.7	0.2
58	Brisbane - Bundaberg	..	10.1	NA
59	Geraldton - Perth	..	8.2	NA
60	Adelaide - Alice Springs	7.6	7.9	4.4
61	Brisbane - Moranbah	7.7	7.6	-0.5
Total domestic network		4 563.3	4 904.2	7.5

.. Data not available for release.

Table 3: Available seats (000s) — monthly activity

	City-Pair	Dec 2022	Dec 2023	% Change
1	Melbourne - Sydney	711.1	740.5	4.1
2	Brisbane - Sydney	398.7	414.7	4.0
3	Brisbane - Melbourne	305.8	324.4	6.1
4	Gold Coast - Sydney	247.6	256.0	3.4
5	Gold Coast - Melbourne	238.8	234.3	-1.9
6	Adelaide - Melbourne	226.1	221.3	-2.1
7	Melbourne - Perth	197.9	203.5	2.8
8	Adelaide - Sydney	160.2	187.2	16.9
9	Perth - Sydney	147.0	162.2	10.4
10	Hobart - Melbourne	155.4	169.4	9.0
11	Brisbane - Cairns	118.4	114.1	-3.6
12	Brisbane - Perth	102.0	102.5	0.5
13	Canberra - Melbourne	101.4	107.2	5.8
14	Launceston - Melbourne	97.4	107.1	10.0
15	Adelaide - Brisbane	79.6	93.6	17.6
16	Melbourne - Sunshine Coast	77.1	89.1	15.6
17	Hobart - Sydney	85.8	85.5	-0.4
18	Brisbane - Townsville	90.5	88.9	-1.8
19	Sunshine Coast - Sydney	87.4	87.0	-0.5
20	Cairns - Sydney	96.9	85.7	-11.6
21	Adelaide - Perth	64.9	73.7	13.5
22	Brisbane - Mackay	83.9	73.6	-12.2
23	Cairns - Melbourne	72.3	76.9	6.4
24	Brisbane - Canberra	77.9	64.3	-17.5
25	Canberra - Sydney	68.0	66.0	-2.9
26	Ballina - Sydney	60.4	55.3	-8.4
27	Karratha - Perth	55.0	63.9	16.3
28	Brisbane - Newcastle	54.8	51.4	-6.2
29	Brisbane - Rockhampton	55.1	50.1	-9.1
30	Melbourne - Newcastle	42.5	46.9	10.4
31	Launceston - Sydney	37.1	42.2	13.9
32	Perth - Port Hedland	47.7	59.0	23.7
33	Brisbane - Hobart	40.5	37.8	-6.7
34	Brisbane - Proserpine	32.5	36.2	11.5
35	Kalgoorlie - Perth	37.5	46.4	23.7
36	Newman - Perth	45.5	49.7	9.2
37	Adelaide - Gold Coast	27.4	29.6	8.2
38	Brisbane - Darwin	31.0	29.8	-3.9
39	Broome - Perth	33.8	35.1	4.0
40	Hamilton Island - Sydney	28.9	29.7	2.7
41	Darwin - Melbourne	28.7	24.6	-14.1
42	Brisbane - Launceston	23.1	20.9	-9.5
43	Canberra - Gold Coast	18.5	19.4	5.2
44	Coffs Harbour - Sydney	24.5	21.1	-13.9
45	Brisbane - Gladstone	25.7	25.0	-3.0
46	Brisbane - Hamilton Island	22.4	24.6	9.7
47	Adelaide - Canberra	23.5	20.6	-12.3
48	Adelaide - Port Lincoln	20.3	22.0	8.5
49	Port Macquarie - Sydney	22.0	20.5	-7.0
50	Melbourne - Mildura	15.5	19.1	23.3

continued

Table 3: (continued) Available seats (000s) — monthly activity

	City-Pair	Dec 2022	Dec 2023	% Change
51	Dubbo - Sydney	23.0	21.8	-5.2
52	Darwin - Perth	18.2	18.6	2.2
53	Brisbane - Emerald	20.6	20.0	-3.0
54	Albury - Sydney	20.8	19.1	-8.3
55	Sydney - Wagga Wagga	21.8	18.8	-13.7
56	Brisbane - Mount Isa	18.3	19.1	4.6
57	Devonport - Melbourne	16.0	15.2	-4.9
58	Brisbane - Bundaberg	..	15.4	NA
59	Geraldton - Perth	..	18.6	NA
60	Adelaide - Alice Springs	13.1	12.4	-5.5
61	Brisbane - Moranbah	16.2	15.2	-6.3
Total domestic network		5 904.1	6 147.6	4.1

.. Data not available for release.

Table 4: Load factors (%) — monthly activity

	City-Pair	Dec 2022	Dec 2023	% Point diff
1	Melbourne - Sydney	81.8	87.7	5.9
2	Brisbane - Sydney	82.5	87.7	5.2
3	Brisbane - Melbourne	82.1	85.8	3.7
4	Gold Coast - Sydney	86.1	87.1	1.0
5	Gold Coast - Melbourne	86.5	86.6	0.1
6	Adelaide - Melbourne	79.8	84.6	4.8
7	Melbourne - Perth	85.8	88.7	2.9
8	Adelaide - Sydney	85.2	83.5	-1.7
9	Perth - Sydney	91.8	90.4	-1.4
10	Hobart - Melbourne	72.9	77.2	4.3
11	Brisbane - Cairns	82.3	82.4	0.1
12	Brisbane - Perth	88.6	89.8	1.2
13	Canberra - Melbourne	75.2	77.2	2.0
14	Launceston - Melbourne	73.7	76.9	3.2
15	Adelaide - Brisbane	83.6	81.5	-2.1
16	Melbourne - Sunshine Coast	77.9	83.9	6.0
17	Hobart - Sydney	77.5	85.0	7.5
18	Brisbane - Townsville	78.4	81.4	3.0
19	Sunshine Coast - Sydney	74.1	81.9	7.8
20	Cairns - Sydney	82.8	77.0	-5.8
21	Adelaide - Perth	85.2	82.0	-3.2
22	Brisbane - Mackay	73.6	80.7	7.1
23	Cairns - Melbourne	82.9	75.3	-7.6
24	Brisbane - Canberra	69.2	80.3	11.1
25	Canberra - Sydney	63.5	71.8	8.3
26	Ballina - Sydney	78.0	83.9	5.9
27	Karratha - Perth	70.2	65.7	-4.5
28	Brisbane - Newcastle	69.4	80.1	10.7
29	Brisbane - Rockhampton	70.1	80.0	9.9
30	Melbourne - Newcastle	78.3	80.2	1.9
31	Launceston - Sydney	81.4	82.1	0.7
32	Perth - Port Hedland	72.0	58.1	-13.9
33	Brisbane - Hobart	72.5	83.9	11.4
34	Brisbane - Proserpine	74.0	74.5	0.5
35	Kalgoorlie - Perth	64.8	56.7	-8.1
36	Newman - Perth	57.0	51.9	-5.1
37	Adelaide - Gold Coast	83.3	83.5	0.2
38	Brisbane - Darwin	77.5	80.5	3.0
39	Broome - Perth	70.9	67.1	-3.8
40	Hamilton Island - Sydney	75.2	71.2	-4.0
41	Darwin - Melbourne	72.6	85.0	12.4
42	Brisbane - Launceston	74.2	80.1	5.9
43	Canberra - Gold Coast	80.6	85.7	5.1
44	Coffs Harbour - Sydney	75.2	78.2	3.0
45	Brisbane - Gladstone	59.5	65.8	6.3
46	Brisbane - Hamilton Island	68.9	63.4	-5.5
47	Adelaide - Canberra	67.5	70.5	3.0
48	Adelaide - Port Lincoln	73.6	65.9	-7.7
49	Port Macquarie - Sydney	61.9	68.5	6.6
50	Melbourne - Mildura	74.5	71.3	-3.2

continued

Table 4: (continued) Load factors (%) — monthly activity

	City-Pair	Dec 2022	Dec 2023	% Point diff
51	Dubbo - Sydney	53.9	62.5	8.6
52	Darwin - Perth	71.0	72.7	1.7
53	Brisbane - Emerald	63.3	66.9	3.6
54	Albury - Sydney	60.7	68.6	7.9
55	Sydney - Wagga Wagga	55.1	62.9	7.8
56	Brisbane - Mount Isa	59.7	56.7	-3.0
57	Devonport - Melbourne	67.1	70.7	3.6
58	Brisbane - Bundaberg	..	65.4	NA
59	Geraldton - Perth	..	43.9	NA
60	Adelaide - Alice Springs	57.8	63.8	6.0
61	Brisbane - Moranbah	47.3	50.2	2.9
Total domestic network		79.9	81.6	1.7

.. Data not available for release.

Table 5: Aircraft trips ^(a) — monthly activity

	City-Pair	Dec 2022	Dec 2023	% Change
1	Melbourne - Sydney	4 100	4 330	5.6
2	Brisbane - Sydney	2 486	2 637	6.1
3	Brisbane - Melbourne	1 889	1 975	4.6
4	Gold Coast - Sydney	1 436	1 476	2.8
5	Gold Coast - Melbourne	1 305	1 297	-0.6
6	Adelaide - Melbourne	1 391	1 379	-0.9
7	Melbourne - Perth	1 129	1 165	3.2
8	Adelaide - Sydney	1 001	1 213	21.2
9	Perth - Sydney	796	869	9.2
10	Hobart - Melbourne	910	983	8.0
11	Brisbane - Cairns	782	748	-4.3
12	Brisbane - Perth	589	586	-0.5
13	Canberra - Melbourne	710	758	6.8
14	Launceston - Melbourne	786	806	2.5
15	Adelaide - Brisbane	630	729	15.7
16	Melbourne - Sunshine Coast	445	501	12.6
17	Hobart - Sydney	512	524	2.3
18	Brisbane - Townsville	647	674	4.2
19	Sunshine Coast - Sydney	545	487	-10.6
20	Cairns - Sydney	509	458	-10.0
21	Adelaide - Perth	393	425	8.1
22	Brisbane - Mackay	623	680	9.1
23	Cairns - Melbourne	383	406	6.0
24	Brisbane - Canberra	567	534	-5.8
25	Canberra - Sydney	1 181	1 075	-9.0
26	Ballina - Sydney	447	380	-15.0
27	Karratha - Perth	360	387	7.5
28	Brisbane - Newcastle	499	476	-4.6
29	Brisbane - Rockhampton	622	616	-1.0
30	Melbourne - Newcastle	271	293	8.1
31	Launceston - Sydney	230	264	14.8
32	Perth - Port Hedland	327	355	8.6
33	Brisbane - Hobart	245	234	-4.5
34	Brisbane - Proserpine	216	227	5.1
35	Kalgoorlie - Perth	278	299	7.6
36	Newman - Perth	302	307	1.7
37	Adelaide - Gold Coast	156	159	1.9
38	Brisbane - Darwin	241	221	-8.3
39	Broome - Perth	241	237	-1.7
40	Hamilton Island - Sydney	166	168	1.2
41	Darwin - Melbourne	162	166	2.5
42	Brisbane - Launceston	134	127	-5.2
43	Canberra - Gold Coast	104	109	4.8
44	Coffs Harbour - Sydney	461	376	-18.4
45	Brisbane - Gladstone	333	307	-7.8
46	Brisbane - Hamilton Island	131	148	13.0
47	Adelaide - Canberra	206	191	-7.3
48	Adelaide - Port Lincoln	498	538	8.0
49	Port Macquarie - Sydney	393	352	-10.4
50	Melbourne - Mildura	369	393	6.5

continued

Table 5: (continued) Aircraft trips ^(a) — monthly activity

	City-Pair	Dec 2022	Dec 2023	% Change
51	Dubbo - Sydney	434	409	-5.8
52	Darwin - Perth	104	112	7.7
53	Brisbane - Emerald	309	298	-3.6
54	Albury - Sydney	388	347	-10.6
55	Sydney - Wagga Wagga	405	338	-16.5
56	Brisbane - Mount Isa	166	165	-0.6
57	Devonport - Melbourne	358	334	-6.7
58	Brisbane - Bundaberg	..	251	NA
59	Geraldton - Perth	..	202	NA
60	Adelaide - Alice Springs	158	144	-8.9
61	Brisbane - Moranbah	216	202	-6.5
Total domestic network		49 602	50 296	1.4

(a) Includes RPT cargo flights.

.. Data not available for release.

TOP TEN AIRPORTS – PASSENGER MOVEMENTS

Table 6: Top ten airports, RPT passenger movements (000s) - monthly activity

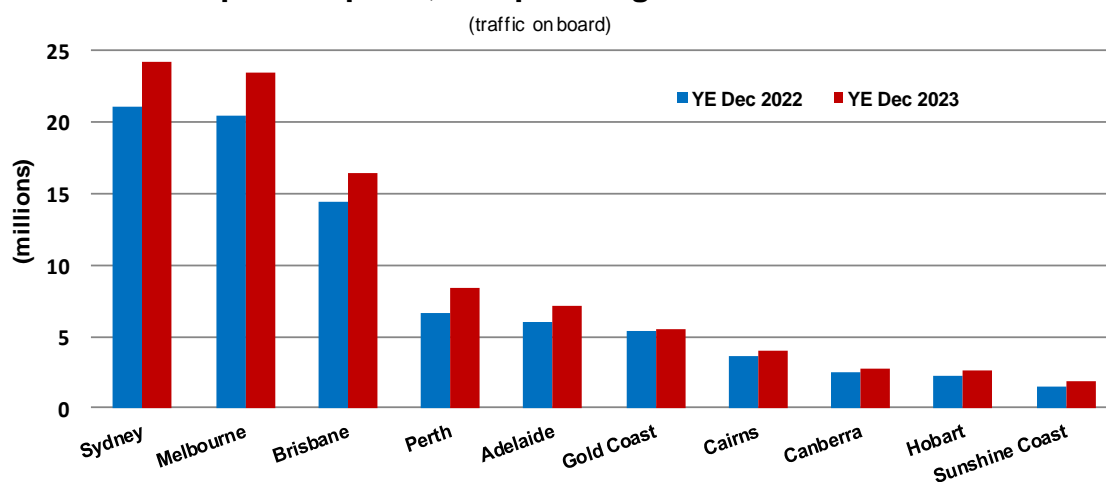
Airport	Dec 2022	Dec 2023	% Change	% of Total
1 Sydney	1 941.3	2 086.8	7.5	21.3
2 Melbourne	1 872.3	2 045.7	9.3	20.9
3 Brisbane	1 300.5	1 379.6	6.1	14.1
4 Perth	679.6	721.8	6.2	7.4
5 Adelaide	568.4	607.0	6.8	6.2
6 Gold Coast	483.3	500.7	3.6	5.1
7 Cairns	310.3	286.1	-7.8	2.9
8 Hobart	233.0	261.7	12.3	2.7
9 Canberra	220.2	226.9	3.0	2.3
10 Sunshine Coast	130.5	180.1	38.0	1.8
Total top ten airports	7 739.4	8 296.5	7.2	84.6
Total domestic network	9 126.6	9 808.5	7.5	100.0

Table 7: Top ten airports, RPT passenger movements (000s) - annual activity

Airport	YE Dec 2022	YE Dec 2023	% Change	% of Total
1 Sydney	20 979.4	24 136.5	15.0	21.1
2 Melbourne	20 457.7	23 397.0	14.4	20.4
3 Brisbane	14 380.9	16 353.8	13.7	14.3
4 Perth	6 626.8	8 403.5	26.8	7.3
5 Adelaide	6 029.6	7 116.9	18.0	6.2
6 Gold Coast	5 336.5	5 459.1	2.3	4.8
7 Cairns	3 686.2	3 970.5	7.7	3.5
8 Canberra	2 438.0	2 759.1	13.2	2.4
9 Hobart	2 289.0	2 579.5	12.7	2.3
10 Sunshine Coast	1 495.6	1 854.4	24.0	1.6
Total top ten airports	83 719.8	96 030.3	14.7	83.8
Total domestic network	100 395.1	114 546.7	14.1	100.0

Note: Airport passenger movement numbers are the sum of passenger arrivals and departures at each airport.

Top ten airports, RPT passenger movements



TOP FIVE AIRPORTS – CARGO MOVEMENTS

Table 8: Top five airports, domestic RPT cargo movements (000s tonnes) - monthly activity

Airport	Dec 2022	Dec 2023	% Change	% of Total
1 Melbourne	8.5	7.7	-8.7	25.9
2 Sydney	6.6	6.8	4.1	22.8
3 Brisbane	5.4	5.4	-0.2	18.0
4 Perth	3.6	3.0	-14.4	10.1
5 Adelaide	2.0	2.3	13.9	7.8
Total top five airports	26.1	25.3	-2.7	84.6
Total domestic network	31.2	30.0	-4.1	100.0

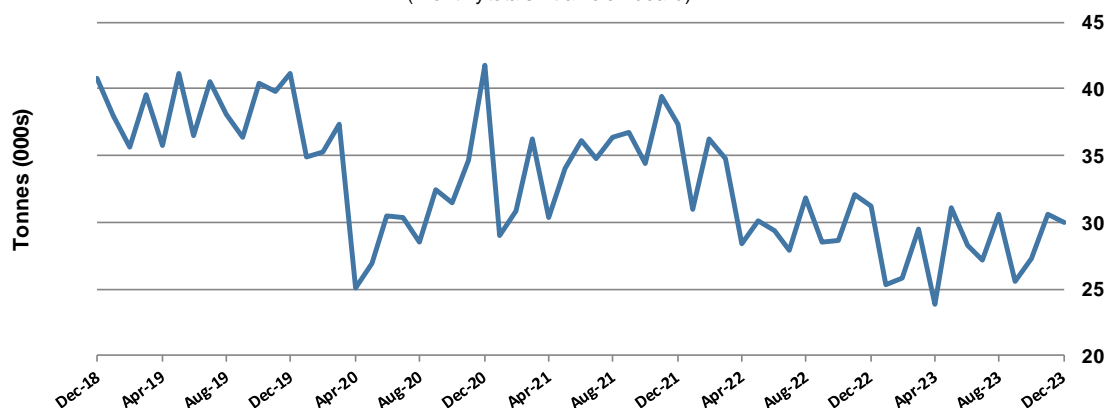
Table 9: Top five airports, domestic RPT cargo movements (000s tonnes) - annual activity

Airport	YE Dec 2022	YE Dec 2023	% Change	% of Total
1 Melbourne	96.8	89.8	-7.2	26.8
2 Sydney	82.9	75.4	-9.0	22.5
3 Brisbane	62.4	59.3	-5.0	17.7
4 Perth	35.2	34.7	-1.5	10.4
5 Adelaide	22.5	18.9	-15.8	5.6
Total top five airports	299.7	278.1	-7.2	83.0
Total domestic network	370.0	335.0	-9.5	100.0

Note: Airport cargo tonnes are the sum of cargo tonnes on arrivals and departures at each airport.

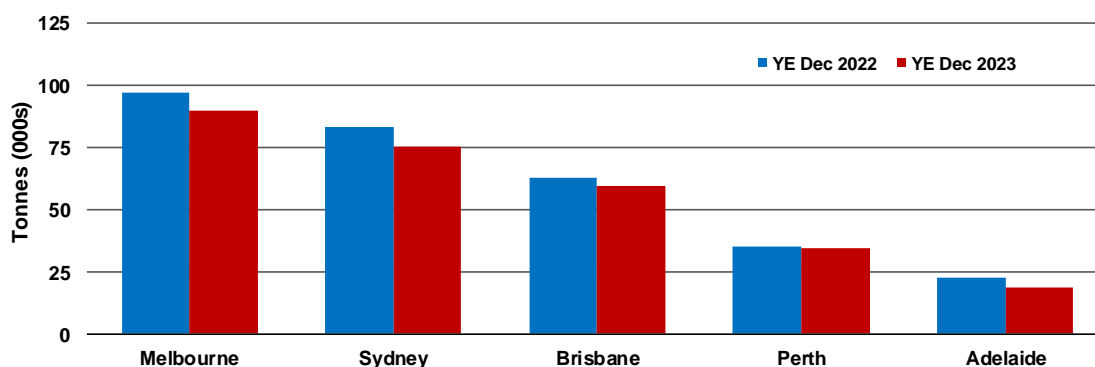
Total domestic network - cargo movement

(monthly totals - traffic on board)



Top five airports, cargo movements

(Domestic cargo traffic - traffic on board)



Note: Airport cargo tonnes are the sum of cargo tonnes on arrivals and departures at each airport.

TOP TEN ROUTES

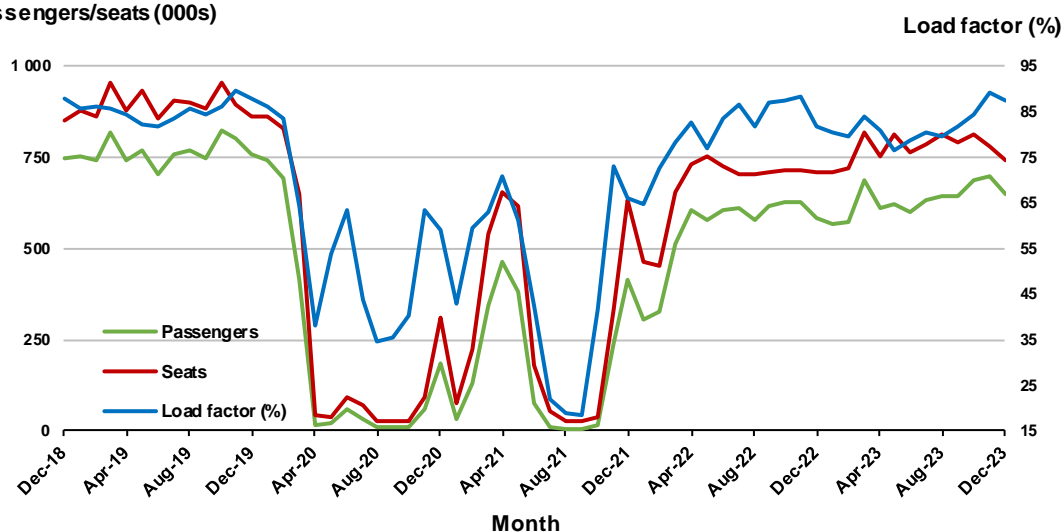
1. Melbourne - Sydney

Monthly data

	Dec 2022	Dec 2023	% Change
Passengers carried (000s)	582.0	649.2	11.5
Seats (000s)	711.1	740.5	4.1
Load factor %	81.8	87.7	5.9 *
Aircraft trips	4 100	4 330	5.6

* percentage point difference

Passengers/seats (000s)

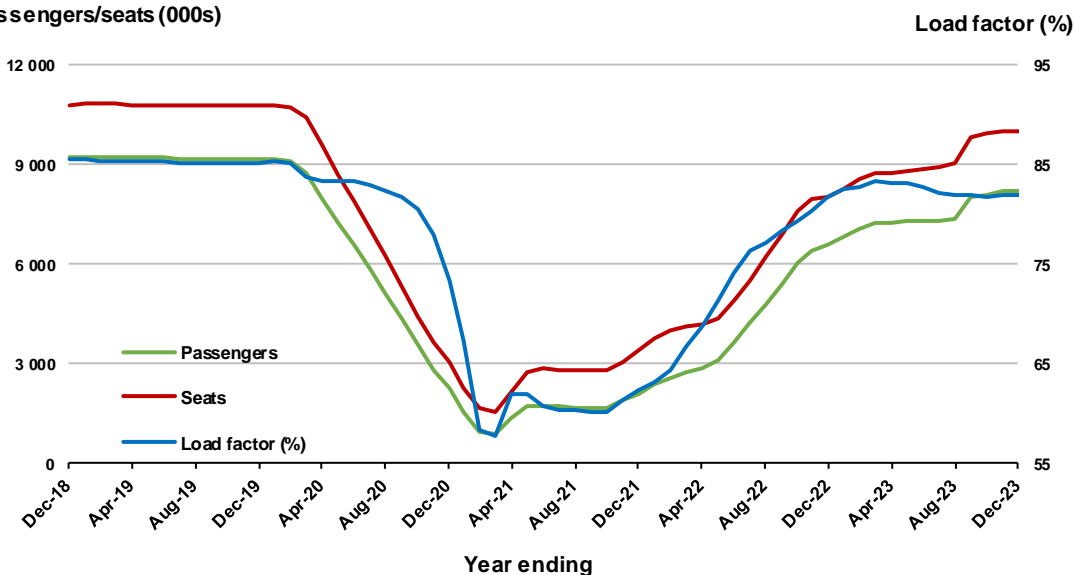


Moving annual data

	YE Dec 2022	YE Dec 2023	% Change
Passengers carried (000s)	6 572.7	8 202.4	24.8
Seats (000s)	8 044.1	10 010.1	24.4
Load factor %	81.7	82.0	0.2 *
Aircraft trips	46 853	58 006	23.8

* percentage point difference

Passengers/seats (000s)

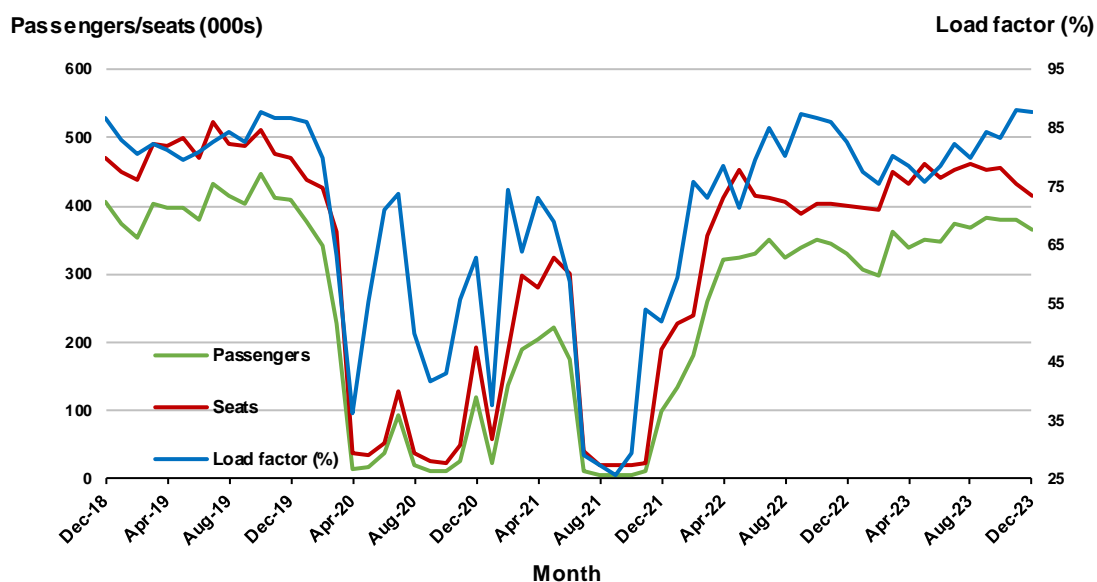


2. Brisbane - Sydney

Monthly data

	Dec 2022	Dec 2023	% Change
Passengers carried (000s)	328.9	363.7	10.6
Seats (000s)	398.7	414.7	4.0
Load factor %	82.5	87.7	5.2 *
Aircraft trips	2 486	2 637	6.1

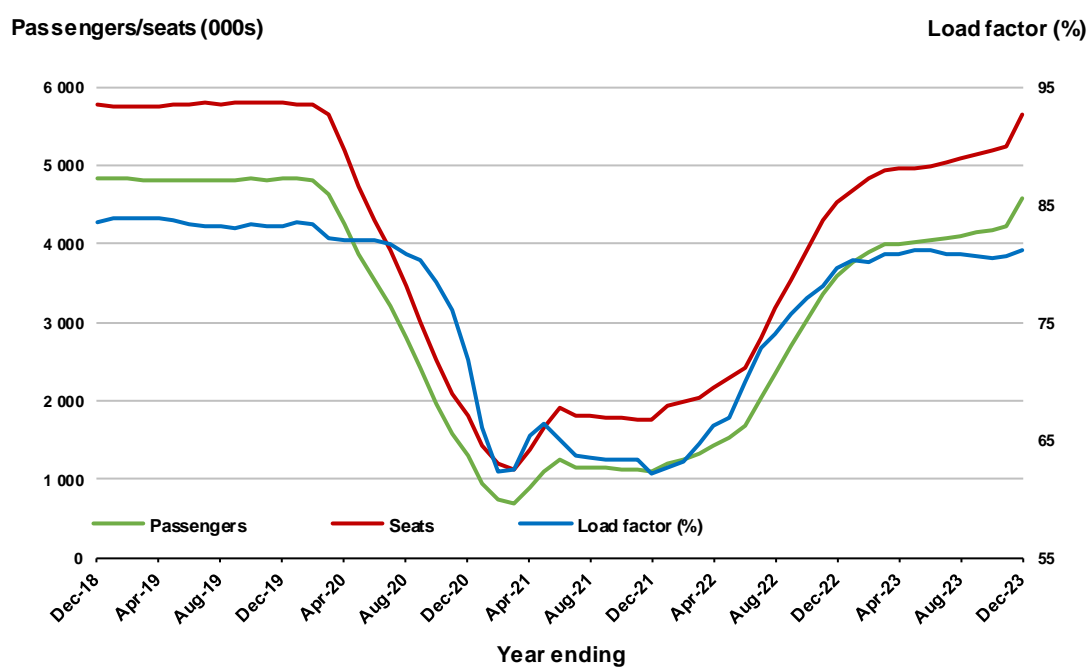
* percentage point difference



Moving annual data

	YE Dec 2022	YE Dec 2023	% Change
Passengers carried (000s)	3 594.3	4 579.5	27.4
Seats (000s)	4 520.0	5 645.3	24.9
Load factor %	79.5	81.1	1.6 *
Aircraft trips	27 927	34 719	24.3

* percentage point difference

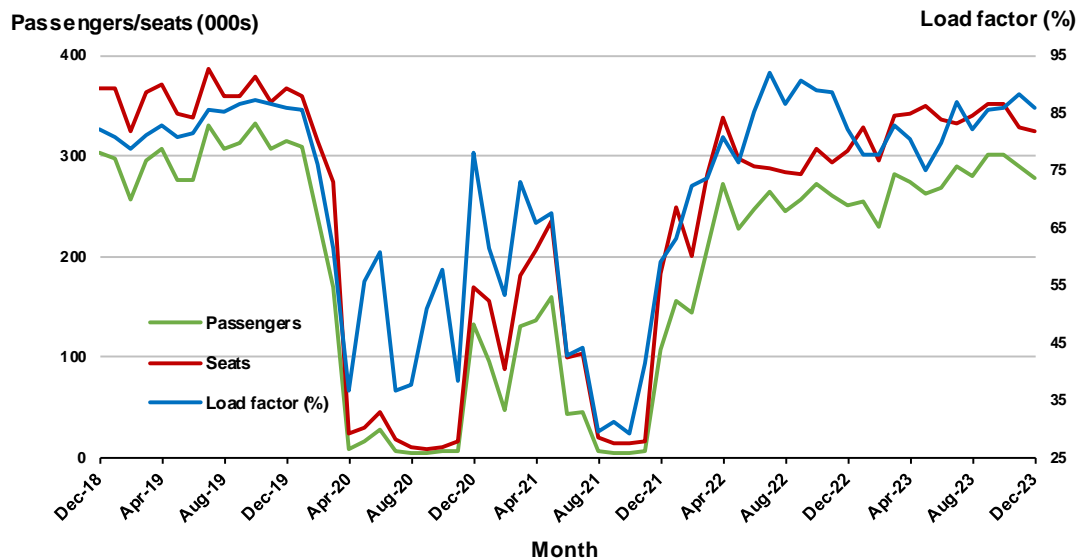


3. Brisbane - Melbourne

Monthly data

	Dec 2022	Dec 2023	% Change
Passengers carried (000s)	250.9	278.5	11.0
Seats (000s)	305.8	324.4	6.1
Load factor %	82.1	85.8	3.7 *
Aircraft trips	1 889	1 975	4.6

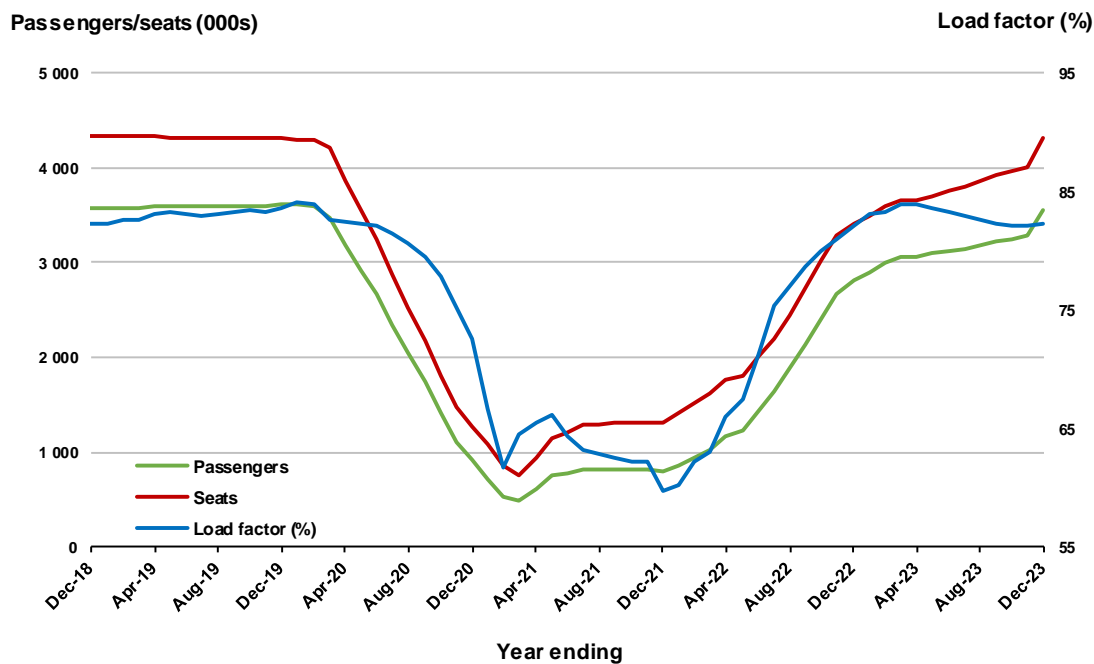
* percentage point difference



Moving annual data

	YE Dec 2022	YE Dec 2023	% Change
Passengers carried (000s)	2 806.5	3 562.7	26.9
Seats (000s)	3 416.2	4 326.1	26.6
Load factor %	82.2	82.4	0.2 *
Aircraft trips	20 882	26 244	25.7

* percentage point difference



4. Gold Coast - Sydney ^(a)

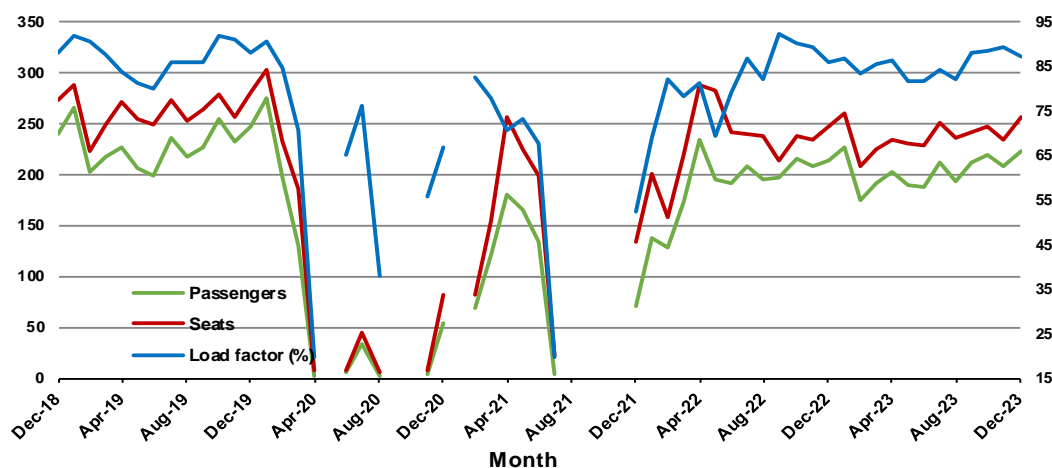
Monthly data

	Dec 2022	Dec 2023	% Change
Passengers carried (000s)	213.2	222.9	4.5
Seats (000s)	247.6	256.0	3.4
Load factor %	86.1	87.1	1.0 *
Aircraft trips	1 436	1 476	2.8

* percentage point difference

Passengers/seats (000s)

Load factor (%)



(a) May, September and October 2020 and January and August to November 2021 data not available for release.

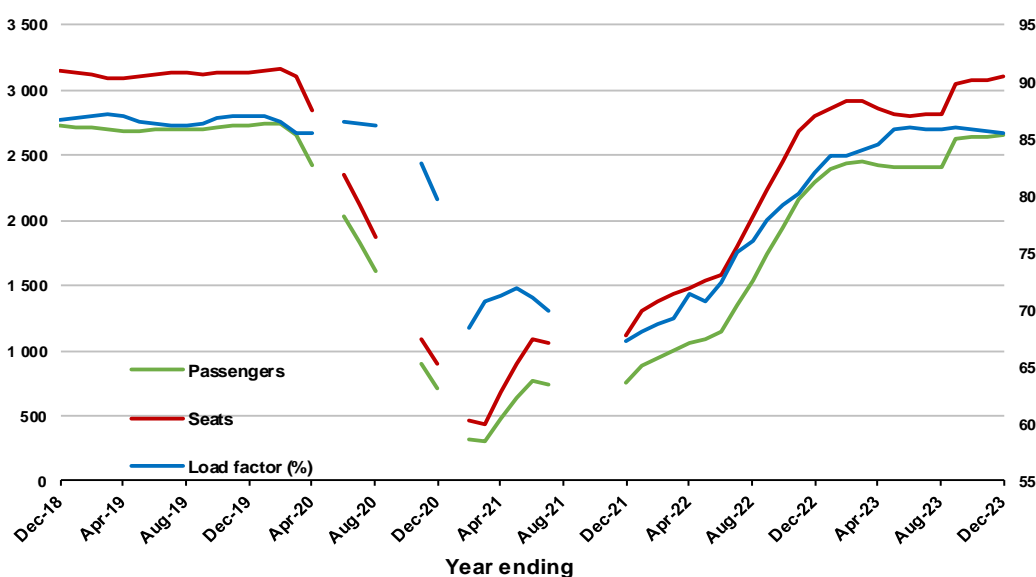
Moving annual data

	YE Dec 2022	YE Dec 2023	% Change
Passengers carried (000s)	2 298.5	2 649.8	15.3
Seats (000s)	2 799.8	3 098.7	10.7
Load factor %	82.1	85.5	3.4 *
Aircraft trips	16 190	17 831	10.1

* percentage point difference

Passengers/seats (000s)

Load factor (%)



(a) May, September and October 2020 and January and August to November 2021 moving annual totals not available for release.

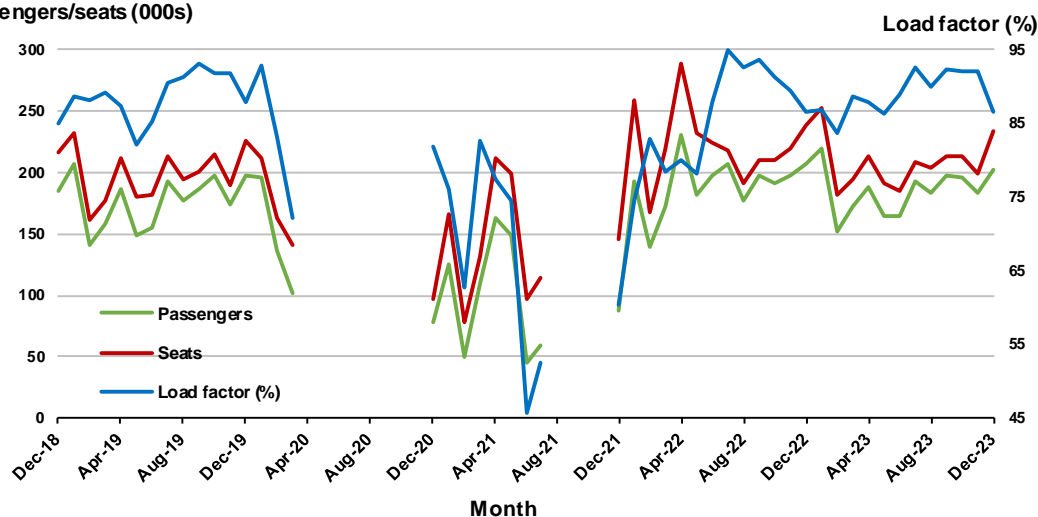
5. Gold Coast - Melbourne ^(a)

Monthly data

	Dec 2022	Dec 2023	% Change
Passengers carried (000s)	206.6	202.8	- 1.8
Seats (000s)	238.8	234.3	-1.9
Load factor %	86.5	86.6	0.1 *
Aircraft trips	1 305	1 297	-0.6

* percentage point difference

Passengers/seats (000s)



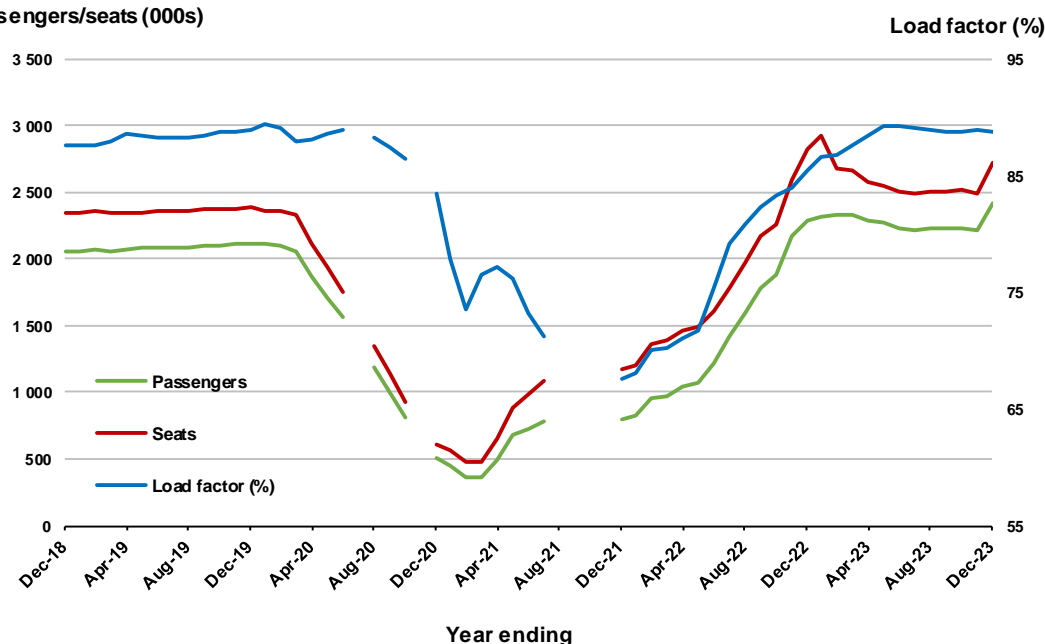
(a) April to November 2020 and August to November 2021 data not available for release.

Moving annual data

	YE Dec 2022	YE Dec 2023	% Change
Passengers carried (000s)	2 291.1	2 422.1	5.7
Seats (000s)	2 825.7	2 727.4	- 3.5
Load factor %	85.5	88.8	3.3 *
Aircraft trips	14 738	14 794	0.4

* percentage point difference

Passengers/seats (000s)



(a) April to November 2020 and August to November 2021 moving annuals are not available for release.

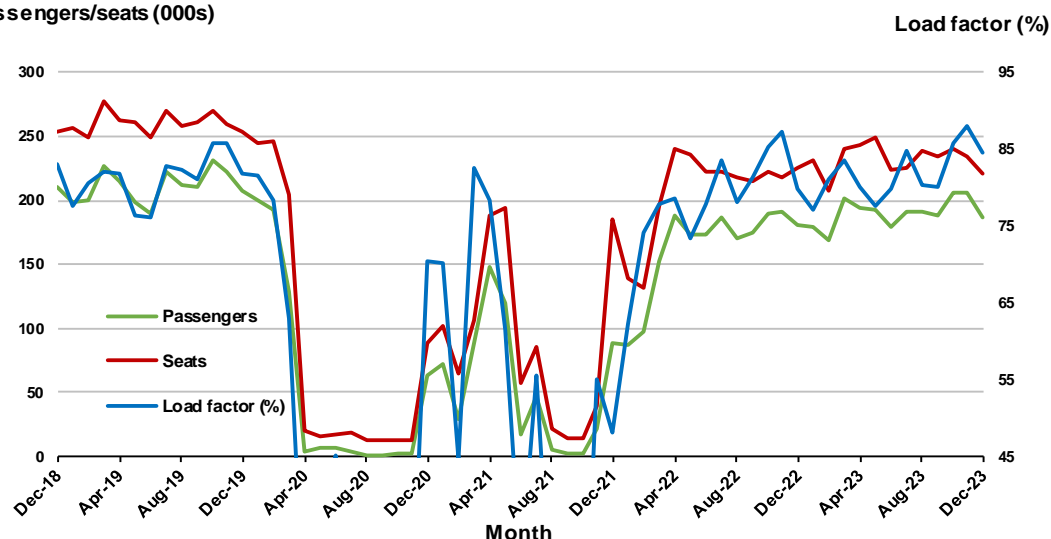
6. Adelaide - Melbourne

Monthly data

	Dec 2022	Dec 2023	% Change
Passengers carried (000s)	180.5	187.3	3.8
Seats (000s)	226.1	221.3	- 2.1
Load factor %	79.8	84.6	4.8 *
Aircraft trips	1 391	1 379	- .9

* percentage point difference

Passengers/seats (000s)



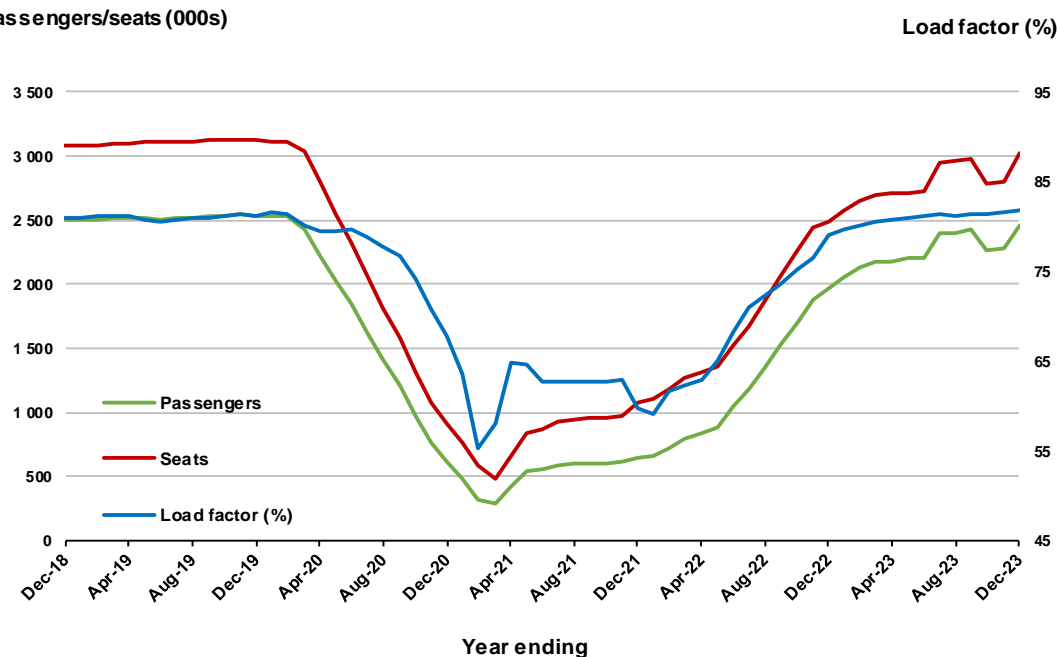
(a) April to November 2020 and August to November 2021 moving annuals are not available for release.

Moving annual data

	YE Dec 2022	YE Dec 2023	% Change
Passengers carried (000s)	1 964.7	2 464.5	25.4
Seats (000s)	2 488.1	3 015.7	21.2
Load factor %	79.0	81.7	2.8 *
Aircraft trips	15 239	18 541	21.7

* percentage point difference

Passengers/seats (000s)



(a) July and November 2020 and August to November 2021 moving annuals are not available for release.

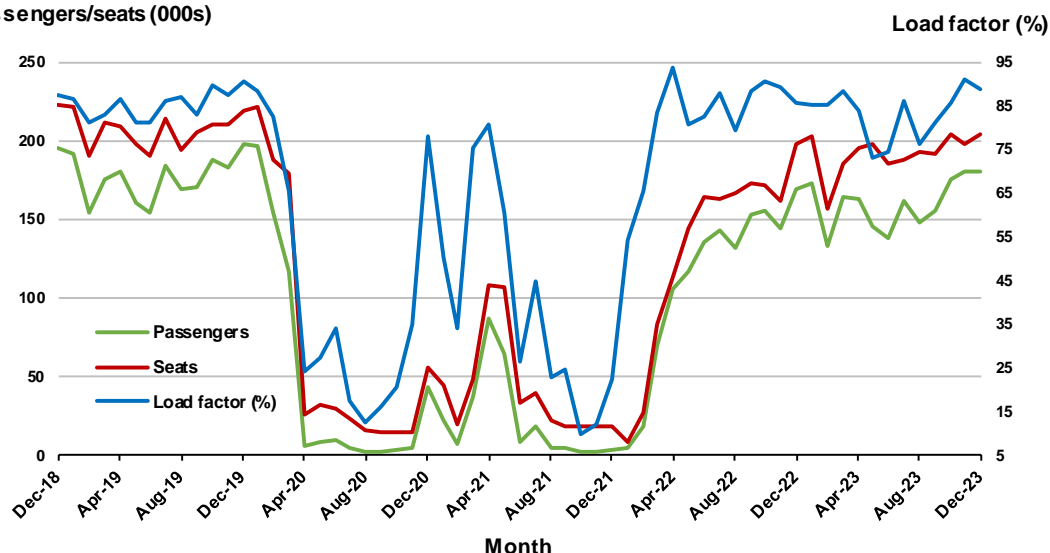
7. Melbourne - Perth

Monthly data

	Dec 2022	Dec 2023	% Change
Passengers carried (000s)	169.7	180.6	6.4
Seats (000s)	197.9	203.5	2.8
Load factor %	85.8	88.7	2.9 *
Aircraft trips	1 129	1 165	3.2

* percentage point difference

Passengers/seats (000s)

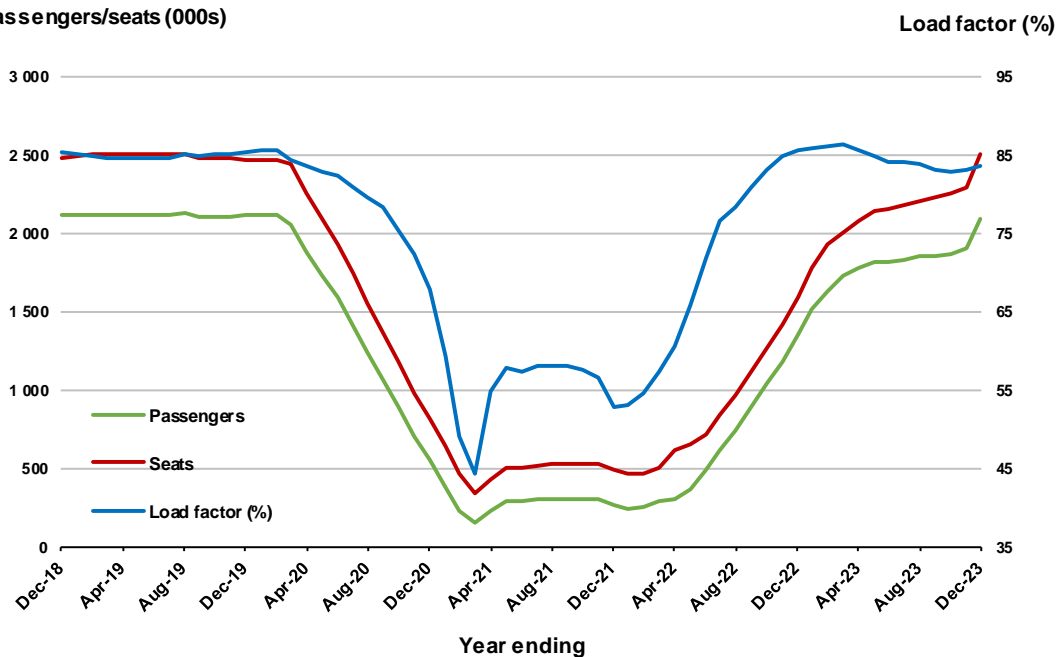


Moving annual data

	YE Dec 2022	YE Dec 2023	% Change
Passengers carried (000s)	1 347.8	2 085.5	54.7
Seats (000s)	1 592.9	2 498.0	56.8
Load factor %	85.6	83.5	-2.1 *
Aircraft trips	9 045	13 946	54.2

* percentage point difference

Passengers/seats (000s)



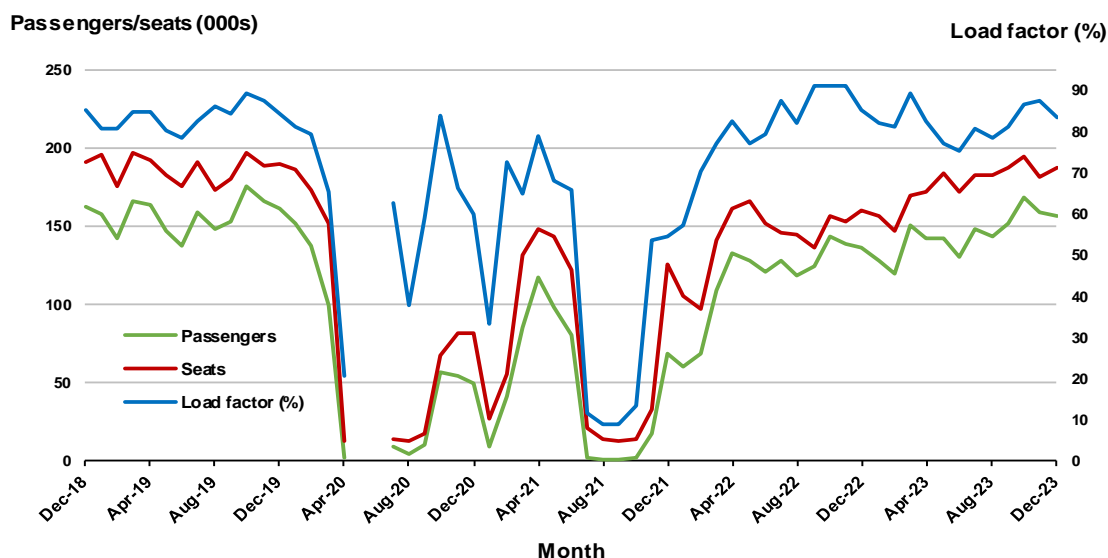
8. Adelaide - Sydney ^(a)

Monthly data

	Dec 2022	Dec 2023	% Change
Passengers carried (000s)	136.5	156.4	14.6
Seats (000s)	160.2	187.2	16.9
Load factor %	85.2	83.5	-1.7 *
Aircraft trips	1 001	1 213	21.2

.. Data not available for release.

* percentage point difference



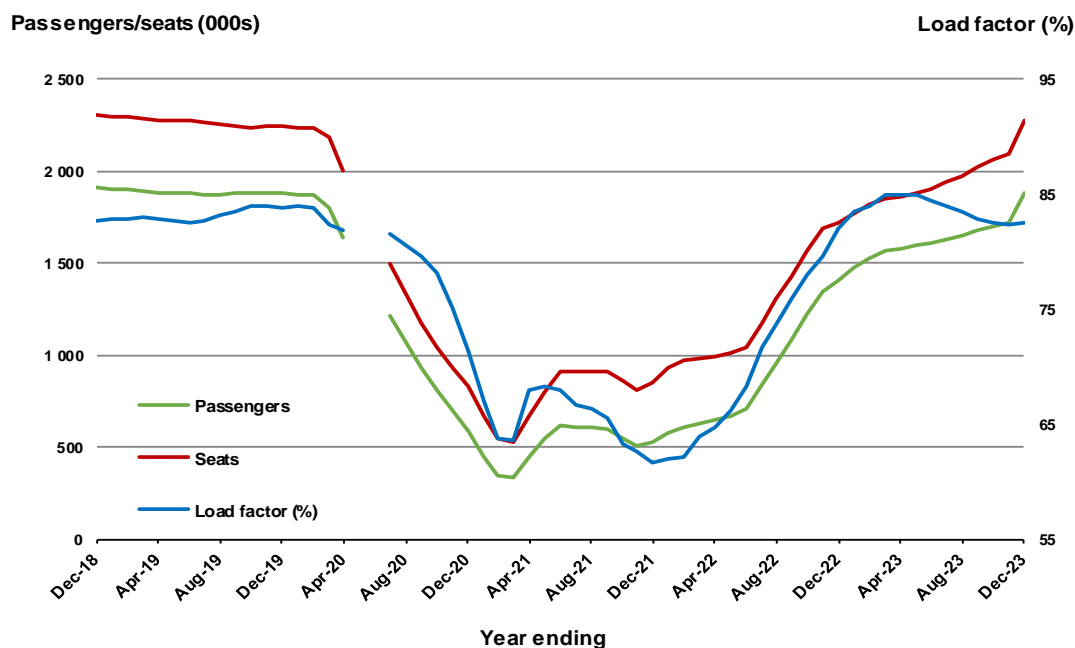
(a) May and June 2020 data not available for release.

Moving annual data

	YE Dec 2022	YE Dec 2023	% Change
Passengers carried (000s)	1 410.6	1 879.7	33.3
Seats (000s)	1 721.1	2 279.1	32.4
Load factor %	82.0	82.5	0.5 *
Aircraft trips	10 528	13 958	32.6

.. Data not available for release.

* percentage point difference



(a) May and June 2020 moving annual totals are not available for release.

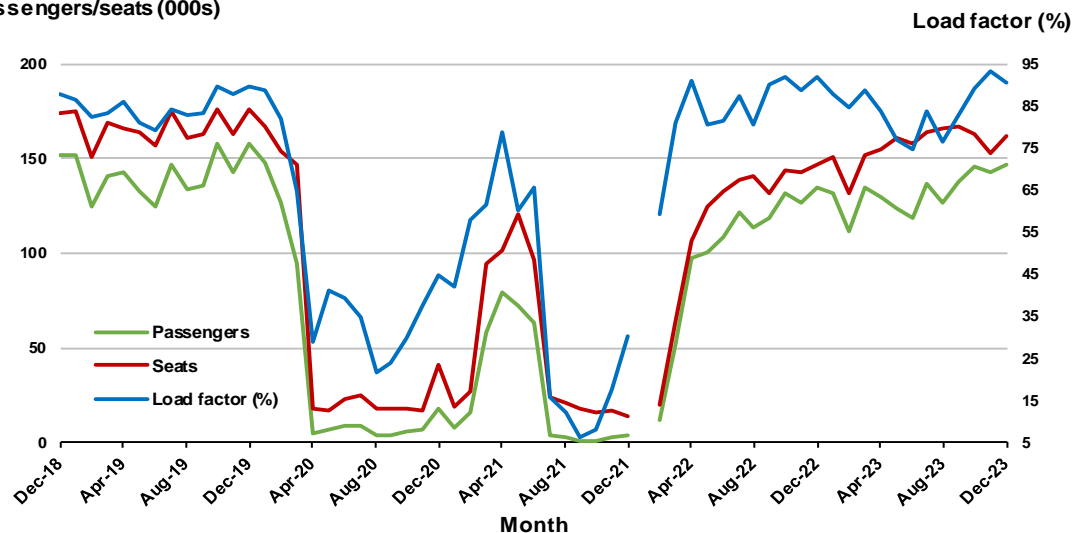
9. Perth - Sydney ^(a)

Monthly data

	Dec 2022	Dec 2023	% Change
Passengers carried (000s)	135.0	146.7	8.7
Seats (000s)	147.0	162.2	10.4
Load factor %	91.8	90.4	-1.4 *
Aircraft trips	796	869	9.2

* percentage point difference

Passengers/seats (000s)



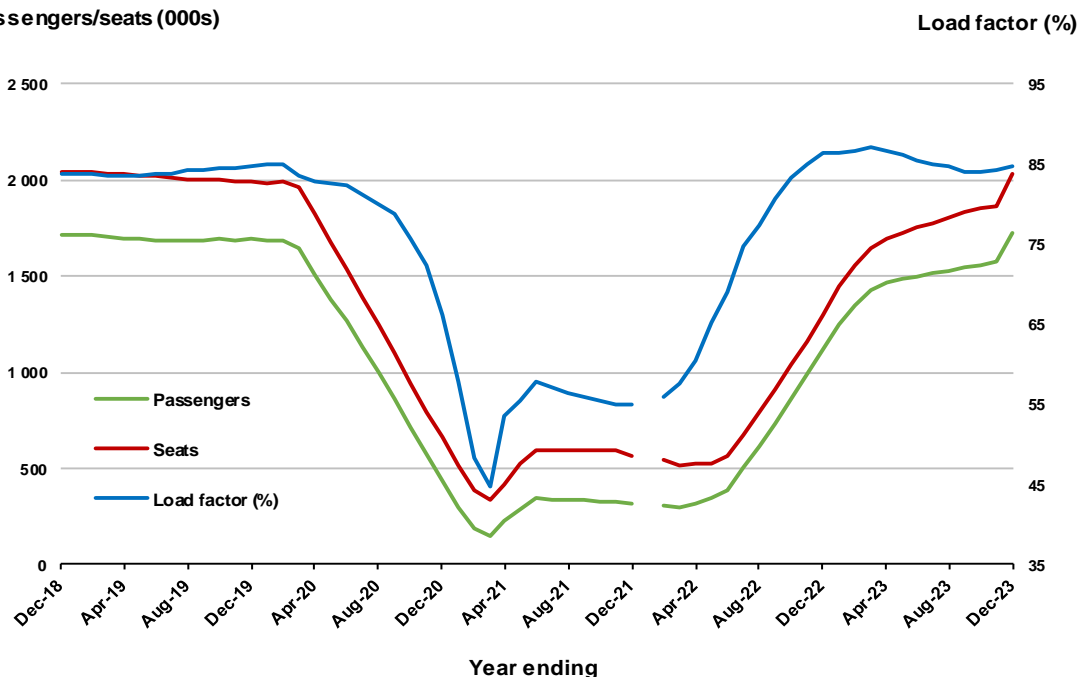
(a) January 2022 data not available for release.

Moving annual data

	YE Dec 2022	YE Dec 2023	% Change
Passengers carried (000s)	1 118.8	1 721.8	53.9
Seats (000s)	1 296.5	2 030.2	56.6
Load factor %	86.3	84.8	-1.5 *
Aircraft trips	6 807	10 533	54.7

* percentage point difference

Passengers/seats (000s)



(a) January 2022 moving annual totals are not available for release.

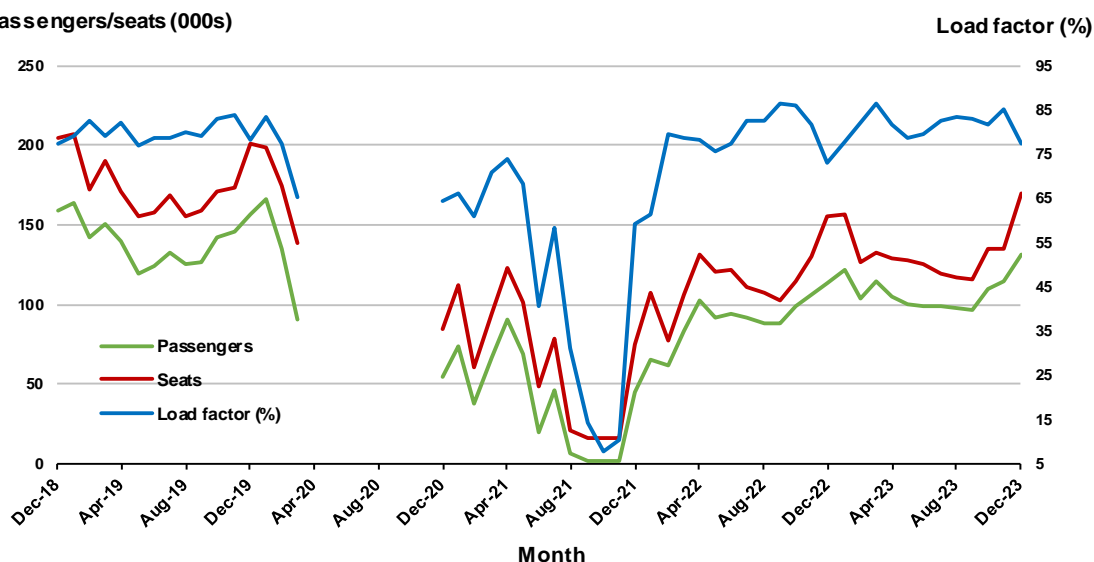
10. Hobart - Melbourne ^(a)

Monthly data

	Dec 2022	Dec 2023	% Change
Passengers carried (000s)	113.3	130.8	15.4
Seats (000s)	155.4	169.4	9.0
Load factor %	72.9	77.2	4.3 *
Aircraft trips	910	983	8.0

* percentage point difference

Passengers/seats (000s)



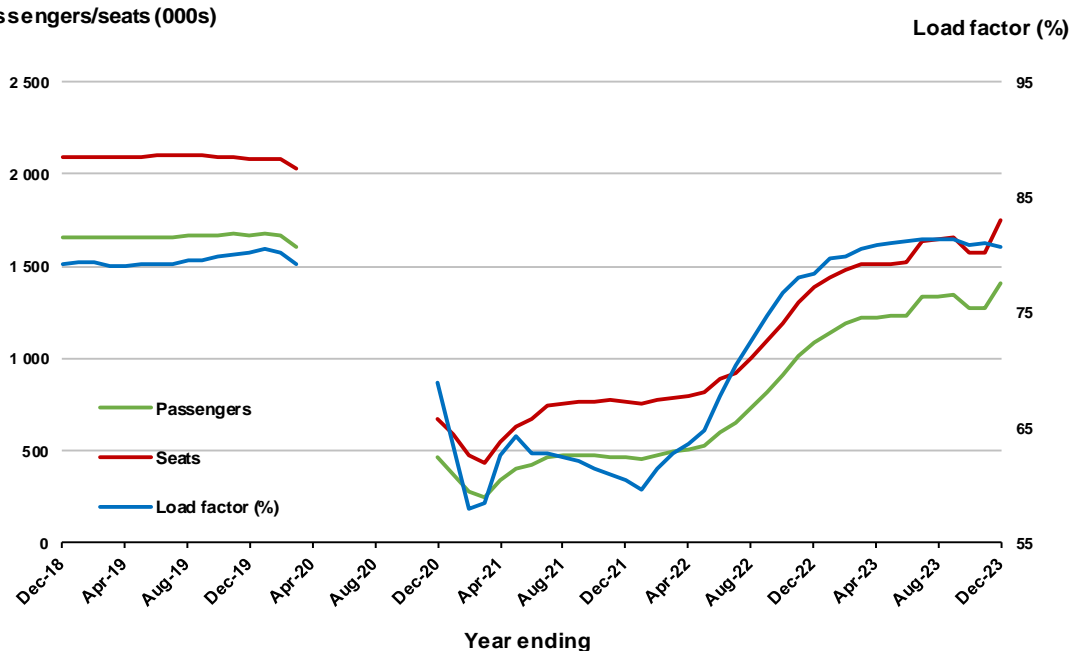
(a) April to November 2020 data not available for release.

Moving annual data

	YE Dec 2022	YE Dec 2023	% Change
Passengers carried (000s)	1 086.4	1 408.1	29.6
Seats (000s)	1 385.9	1 744.9	25.9
Load factor %	78.4	80.7	2.3 *
Aircraft trips	8 491	10 178	19.9

* percentage point difference

Passengers/seats (000s)



(a) April to November 2020 moving annual totals are not available for release.

TOP FIFTY REGIONAL AIRPORTS

Table 10: Top fifty regional airports (000s) — passenger movements, monthly

	Airport	Dec 2022	Dec 2023	% Change
1	Cairns	310.3	286.1	-7.8
2	Hobart	233.0	261.7	12.3
3	Launceston	125.2	142.9	14.1
4	Townsville	130.0	138.9	6.9
5	Darwin	117.4	114.9	-2.1
6	Newcastle	85.4	99.6	16.5
7	Mackay	71.1	74.4	4.6
8	Ballina	56.7	56.7	0.0
9	Rockhampton	41.8	50.4	20.6
10	Proserpine	38.7	48.0	23.9
11	Hamilton Island	44.2	44.5	0.7
12	Karratha	38.6	42.7	10.6
13	Port Hedland	34.4	35.3	2.6
14	Broome	26.0	26.5	2.3
15	Kalgoorlie	24.3	26.3	8.3
16	Newman	25.9	25.8	-0.5
17	Alice Springs	22.9	25.0	9.1
18	Albury	18.4	23.4	27.2
19	Coffs Harbour	23.4	22.3	-5.1
20	Port Macquarie	16.0	20.1	26.1
21	Gladstone	15.4	18.6	20.9
22	Paraburdoo	15.8	18.6	17.5
23	Mildura	16.1	18.3	13.4
24	Ayers Rock	14.9	18.0	21.1
25	Mount Isa	17.2	17.4	1.0
26	Dubbo	15.0	16.4	8.9
27	Wagga Wagga	15.4	15.3	-0.9
28	Port Lincoln	14.9	14.5	-2.9
29	Emerald	13.8	14.1	2.2
30	Hervey Bay	11.4	14.0	23.7
31	Tamworth	11.9	13.5	13.7
32	Bundaberg	8.8	13.2	49.7
33	Devonport	10.7	10.7	0.2
34	Kununurra	6.8	9.0	32.9
35	Geraldton	5.9	8.5	43.3
36	Toowoomba Wellcamp	2.9	8.5	192.1
37	Orange	7.4	8.3	13.4
38	Thursday Island	8.2	8.1	-0.4
39	Armidale	8.9	8.1	-8.8
40	Moranbah	7.7	7.7	0.4
41	Burnie	7.2	7.2	-0.6
42	Olympic Dam	7.2	7.2	-0.3
43	Gove	5.9	6.5	9.8
44	Merimbula	6.8	6.5	-5.3
45	Norfolk Island	6.3	6.4	1.6
46	Weipa	6.8	6.4	-6.2
47	Learmonth	6.0	5.6	-6.9
48	Mount Gambier	5.9	5.4	-9.1
49	King Island	5.3	5.1	-2.5
50	Busselton	4.5	5.1	13.0
Total top 50 regional airports		1 775.0	1 887.9	6.4
Total regional airports		1 886.0	1 992.7	5.7
Total domestic network		9 126.6	9 808.5	7.5

Note: Airport passenger movement numbers are the sum of passenger arrivals and departures at each airport.

Regional airports are defined as airports which are, according to Australian Statistical Geography Standard (ASGS), not based in Major Cities.

Table 11: Top fifty regional airports (000s) — passenger movements, annual

Airport	YE Dec 2022	YE Dec 2023	% Change
1 Cairns	3 686.2	3 970.5	7.7
2 Hobart	2 289.0	2 579.5	12.7
3 Townsville	1 527.4	1 691.3	10.7
4 Darwin	1 636.4	1 602.7	-2.1
5 Launceston	1 165.8	1 365.2	17.1
6 Newcastle	1 023.3	1 161.4	13.5
7 Mackay	824.7	909.4	10.3
8 Ballina	639.3	639.2	0.0
9 Rockhampton	484.7	632.8	30.5
10 Karratha	494.0	548.9	11.1
11 Proserpine	464.5	510.2	9.8
12 Hamilton Island	500.1	496.6	-0.7
13 Port Hedland	449.5	485.2	8.0
14 Broome	436.5	437.3	0.2
15 Newman	343.7	371.7	8.2
16 Kalgoorlie	302.3	359.7	19.0
17 Alice Springs	344.2	354.1	2.9
18 Coffs Harbour	276.3	282.5	2.3
19 Ayers Rock	207.9	263.2	26.6
20 Albury	208.9	258.9	23.9
21 Paraburdoo	210.8	246.0	16.7
22 Mount Isa	221.2	230.9	4.4
23 Gladstone	193.5	227.3	17.5
24 Mildura	180.3	224.8	24.7
25 Port Macquarie	164.8	219.2	33.0
26 Dubbo	183.9	212.6	15.6
27 Wagga Wagga	173.4	197.6	14.0
28 Emerald	168.9	195.0	15.4
29 Port Lincoln	170.4	173.9	2.1
30 Tamworth	133.7	167.5	25.3
31 Bundaberg	103.1	151.8	47.3
32 Hervey Bay	125.0	147.1	17.6
33 Kununurra	121.9	137.9	13.1
34 Devonport	97.7	121.5	24.4
35 Armidale	99.5	112.0	12.5
36 Moranbah	98.0	109.3	11.5
37 Thursday Island	96.0	107.0	11.5
38 Orange	91.4	105.6	15.6
39 Learmonth	97.0	104.1	7.4
40 Olympic Dam	89.2	103.2	15.7
41 Geraldton	80.2	95.3	18.8
42 Gove	83.0	88.9	7.2
43 Weipa	83.1	87.2	4.9
44 Burnie	73.7	82.5	11.9
45 Toowoomba Wellcamp	48.3	76.8	59.0
46 Griffith	69.8	73.7	5.7
47 Mount Gambier	73.5	73.1	-0.6
48 Merimbula	62.8	72.1	15.0
49 Norfolk Island	67.0	69.0	3.0
50 Roma	54.0	63.6	17.7
Total top 50 regional airports	20 819.7	22 996.8	10.5
Total regional airports	22 128.8	24 398.5	10.3
Total domestic network	100 395.1	114 546.7	14.1

Note: Airport passenger movement numbers are the sum of passenger arrivals and departures at each airport. Regional airports are defined as airports which are, according to Australian Statistical Geography Standard (ASGS), not based in Major Cities.

DOMESTIC CHARTER ACTIVITY

Table 12: Charter passengers carried and aircraft trips - monthly activity (000s)

	Dec 2022	Dec 2023	% Change
Total domestic charter passengers	293.6	308.5	5.1
Total domestic charter aircraft trips	5.4	5.7	4.6

Note: Helicopter, joyflights and sightseeing charter flights not included.

Table 13: Charter passengers carried and aircraft trips - annual activity (000s)

	YE Dec 2022	YE Dec 2023	% Change
Total domestic charter passengers	3 544.5	4 046.5	14.2
Total domestic charter aircraft trips	65.7	69.8	6.2

Note: Helicopter, joyflights and sightseeing charter flights not included.

Table 14: Domestic airports - charter activity - monthly (000s)

	Dec 2022	Dec 2023	% Change
Total domestic charter passenger movements	587.1	617.0	5.1
Total domestic charter aircraft movements	10.8	11.3	4.6
Perth airport charter passenger movements	218.4	230.8	5.7
Perth airport charter aircraft movements	3.7	3.8	2.4

Note: Helicopter, joyflights and sightseeing charter flights not included.

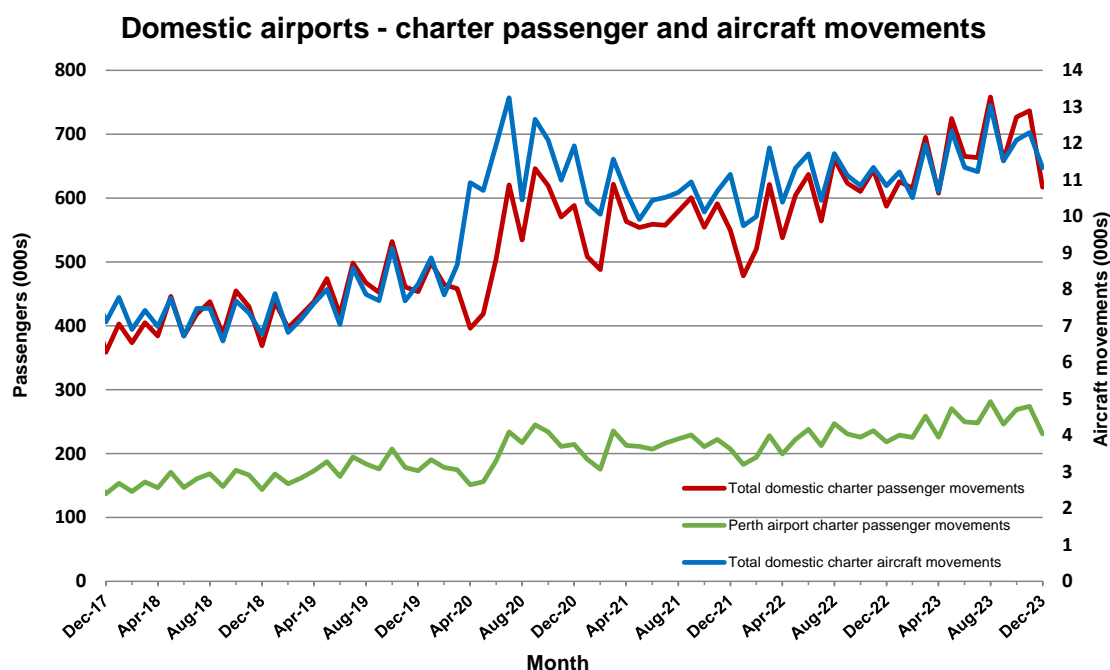
Charter passenger and aircraft movement numbers are the sum of arrivals and departures at each airport.

Table 15: Domestic airports - charter activity - annual (000s)

	YE Dec 2022	YE Dec 2023	% Change
Total domestic charter passenger movements	7 089.1	8 093.0	14.2
Total domestic charter aircraft movements	131.3	139.5	6.2
Perth airport charter passenger movements	2 634.5	3 007.0	14.1
Perth airport charter aircraft movements	44.4	47.2	6.3

Note: Helicopter, joyflights and sightseeing charter flights not included.

Charter passenger and aircraft movement numbers are the sum of arrivals and departures at each airport.



DEFINITIONS

Aircraft Trips	The number of flight stages. A return flight counts as two aircraft trips.
Airport Movements	Airport movements (passenger and cargo) are measured once on arrival and once on departure. Each domestic trip generates two movements at airports. For example, a trip from Melbourne to Sydney will be counted twice, as a departure at Melbourne and as an arrival at Sydney. At the national level, the sum of all domestic airport traffic will therefore be equal to twice the number of trips undertaken.
Available Seat Kilometres (ASKs)	Calculated by multiplying the number of seats available on each flight stage, by the distance in kilometres between the ports. The distances used are Great Circle Distances.
City-Pair	The ports shown make up the city-pair route. Passenger movements shown for a city pair reflect total traffic in both directions.
Flight Stage	The operation of an aircraft from take-off to landing.
Load Factor	The total revenue passenger kilometres performed as a percentage of the total available seat kilometres.
Passengers Carried	Revenue passengers carried.
Regular Public Transport Services (RPT)	All air service operations in which aircraft are available for the transport of members of the public and are conducted in accordance with fixed schedules. It does not include charter or other non-scheduled operations.
Revenue Passengers	All passengers paying any fare. Frequent flyer redemption travellers are regarded as revenue passengers.
Revenue Passenger Kilometres (RPKs)	Calculated by multiplying the number of revenue passengers travelling on each flight stage, by the distance in kilometres between the ports. The distances used are Great Circle Distances.
Traffic on board by stages (TOB)	The total of all traffic (revenue passengers) on each flight stage between two directly connected airports.
..	Not available for confidentiality or other reasons.
NA	Not applicable.