



Australian Government

**Department of Infrastructure, Transport,
Regional Development, Communications, Sport and the Arts**

Bureau of Infrastructure and Transport Research Economics
STATISTICAL REPORT



Aviation

**Domestic aviation activity
2025**

The Department of Infrastructure, Transport, Regional Development, Communications, Sport and the Arts acknowledges the Traditional Custodians of country throughout Australia and their connections to land, sea and community.

We pay our respects to the Elders past and present and extend that respect to the Aboriginal and Torres Strait Islander people.

© Commonwealth of Australia 2026

ISSN: 1832 – 1968

BITRE Reference: 2026-043

Ownership of intellectual property rights in this publication

Unless otherwise noted, copyright (and any other intellectual property rights, if any) in this publication is owned by the Commonwealth of Australia (referred to below as the Commonwealth).

Disclaimer

The material contained in this publication is made available on the understanding that the Commonwealth is not providing professional advice, and that users exercise their own skill and care with respect to its use, and seek independent advice if necessary.

The Commonwealth makes no representations or warranties as to the contents or accuracy of the information contained in this publication. To the extent permitted by law, the Commonwealth disclaims liability to any person or organisation in respect of anything done, or omitted to be done, in reliance upon information contained in this publication.

Creative Commons licence

With the exception of (a) the Coat of Arms; and (b) the Department of Infrastructure, Transport, Regional Development, Communications, Sport and the Arts' photos and graphics, copyright in this publication is licensed under a Creative Commons Attribution 3.0 Australia Licence.

Creative Commons Attribution 3.0 Australia Licence is a standard form licence agreement that allows you to copy, communicate and adapt this publication provided that you attribute the work to the Commonwealth and abide by the other licence terms. A summary of the licence terms is available from <http://creativecommons.org/licenses/by/3.0/au/deed.en>.

The full licence terms are available from <http://creativecommons.org/licenses/by/3.0/au/legalcode>.

Use of the Coat of Arms

The Department of the Prime Minister and Cabinet sets the terms under which the Coat of Arms is used. Please refer to the Department's Commonwealth Coat of Arms and Government branding web page <http://www.dpmc.gov.au/guidelines/index.cfm#brand> and, in particular, the Guidelines on the use of the Commonwealth Coat of Arms publication.

An appropriate citation for this report is:

Bureau of Infrastructure and Transport Research Economics (BITRE), 2025, Domestic aviation activity, Statistical Report, BITRE, Canberra ACT.

Contact us

This publication is available in PDF format. All other rights are reserved, including in relation to any Departmental logos or trademarks which may exist. For enquiries regarding the licence and any use of this publication, please contact:

Bureau of Infrastructure and Transport Research Economics (BITRE)
Department of Infrastructure, Transport, Regional Development, Communications, Sport and the Arts
GPO Box 501, Canberra ACT 2601, Australia

Email: avstats@infrastructure.gov.au
Website: www.bitre.gov.au/statistics/aviation

Enquiries: Nebojsa.Pavlovic@infrastructure.gov.au (02) 6136 8282

FOREWORD

This report provides an overview of domestic (including charter) commercial aviation activity in Australia for the year ending December 2025.

The data covers revenue passengers carried by Australian-registered operators of scheduled regular public transport services over Australian flight stages and fixed-wing charter operators. These estimates include passengers carried between domestic airports on international flights operated by these carriers. The passengers carried refer to traffic on board by stages.

Estimates of passengers and aircraft movements for charter aviation are included in this publication, where BITRE confidentiality standards are met.

Individual routes shown are restricted to those with an average exceeding 8,000 passengers per month over the previous six months where two or more airlines operate in competition.

Information on both the total network and the Regular Public Transport (RPT) network for the year ending December 2025 is presented on page 2.

Detailed information on the 62 individual routes can be found in the RPT summary pages on pages 3-10.

The top ten airports in terms of RPT passenger movements are shown on page 11.

Data on domestic RPT cargo movements at the top five cargo airports are provided on page 12. The table includes cargo carried on passenger flights operated by the Qantas group (including Jetstar), Virgin Australia, Airnorth and Skippers as well as the cargo carried by dedicated freighter aircraft operated by Qantas Freight and Team Global Express (formerly Toll Priority).

The long-term trends for the top twenty competitive RPT routes are presented graphically on pages 13–22.

Domestic RPT passenger movements at the top 50 regional airports are presented on page 23

Tables providing estimates of domestic charter aviation activity are shown on page 24. BITRE confidentiality standards restrict publication of detailed airport-level estimates for any Australian airport, with the exception of Perth Airport.

A list of definitions can be found on page 25.

This report was prepared by the Aviation Statistics Section of the Bureau of Infrastructure and Transport Research Economics with data provided by airlines.

Estimates are included where data were not available and data presented in this publication may contain revisions to previously published data.

Where figures have been rounded, discrepancies may occur between sums of component items and totals, and in percentage changes which are derived from figures prior to rounding.

CONTENTS

Highlights	1
RPT network.....	2
Top competitive routes.....	3
Top ten airports – passenger movements	11
Top five airports – cargo movements.....	12
Top twenty routes	13
1. Melbourne – Sydney	13
2. Brisbane – Sydney.....	13
3. Brisbane – Melbourne	14
4. Gold Coast – Sydney.....	14
5. Adelaide – Melbourne.....	15
6. Gold Coast – Melbourne.....	15
7. Melbourne – Perth	16
8. Adelaide – Sydney.....	16
9. Perth – Sydney	17
10. Hobart – Melbourne.....	17
11. Brisbane – Cairns	18
12. Brisbane – Perth.....	18
13. Brisbane – Townsville.....	19
14. Canberra – Melbourne.....	19
15. Cairns – Sydney	20
16. Launceston – Melbourne	20
17. Cairns – Melbourne	21
18. Adelaide – Brisbane.....	21
19. Hobart – Sydney.....	22
20. Brisbane – Mackay	22
Top fifty regional airports.....	23
Domestic charter activity.....	24
Definitions	25

This page is intentionally left blank.

HIGHLIGHTS

There were 64.79 million passengers carried on Australian domestic commercial aviation (including charter operations) in the year ending December 2025, an increase of 1.8% compared with the year ending December 2024. This is also 1.1% higher compared with pre-COVID year ending December 2019.

60.44 million passengers were carried on RPT flights in the year ending December 2025, an increase of 1.9% compared with the year ending December 2024.

In the year ending December 2025 there were 603.2 thousand RPT aircraft trips compared to 614.3 thousand in the previous year, a decrease of 1.8%.

RPT revenue passenger kilometres (RPKs) performed were 72.97 billion, an increase of 2.8% compared with the year ending December 2024.

Capacity, measured by available seat kilometres (ASKs), increased by 1.6% compared with the year ending December 2024, to a total of 88.44 billion.

The industry wide load factor (RPKs/ASKs) increased from 81.6% in the year ending December 2024 to 82.5% in the year ending December 2025. The highest load factor (90.8%) was recorded on the Adelaide – Gold Coast route while the lowest load factor (51.8%) was recorded on the Brisbane – Moranbah route.

For the year ending December 2025, Melbourne – Sydney remained Australia's busiest RPT route with 8.12 million passengers, an increase of 1.0% compared with the previous calendar year. It was followed by Brisbane – Sydney with 4.38 million passengers (up 0.6%) and Brisbane – Melbourne with 3.65 million passengers (up 4.2%).

In the year ending December 2025, Sydney was Australia's busiest domestic airport with 25.41 million passenger movements, up 1.1% compared with the year ending December 2024, followed by Melbourne with 24.59 million passenger movements (up 1.8%) and Brisbane with 17.59 million passenger movements (up 2.8%).

Total cargo movements at Australian airports on domestic RPT flights were 320.8 thousand tonnes in the year ending December 2025, an increase of 0.1% compared to the year ending December 2024.

In the year ending December 2025, the number of domestic aviation passengers travelling through regional airports was 25.59 million, up 2.3% compared to the year ending December 2024. Out of the top 50 regional airports, the strongest increase was recorded at Devonport airport (up 19.5%) while the largest decrease was recorded at Albury airport (down 11.7%).

Fixed-wing charter operators carried 4.35 million passengers in the year ending December 2025, an increase of 0.5% compared with the year ending December 2024. Perth airport accounted for 35.7% of all charter passengers in Australia.

TOTAL NETWORK

Summary of annual commercial aviation activity

	YE Dec 2024	YE Dec 2025	% Change
Total passengers carried (millions)	63.62	64.79	1.8
Aircraft trips (000s)	688.1	677.3	-1.6

Note: Regular Public Transport and charter aviation activity, Helicopter, joyflights and sightseeing charter flights not included.

RPT NETWORK

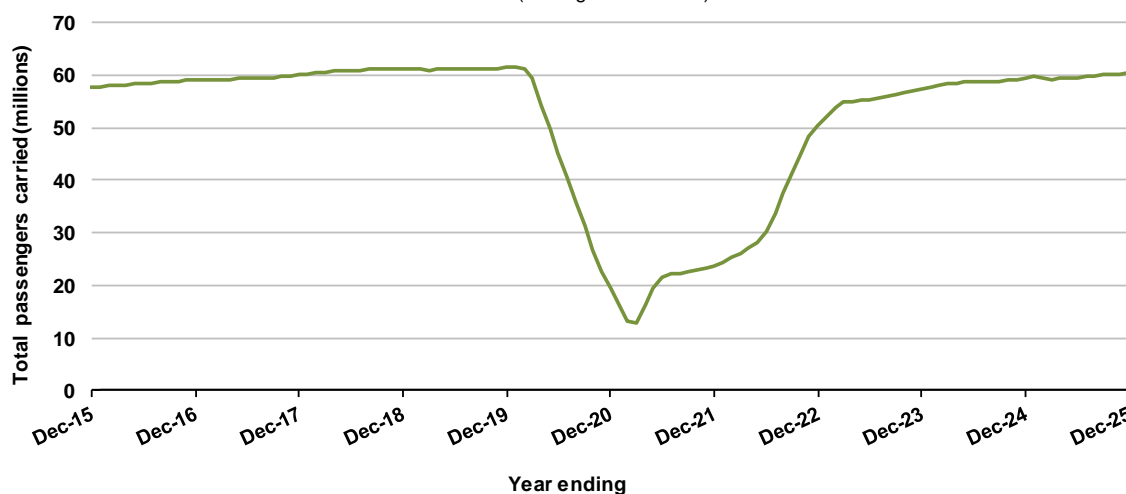
Summary of annual RPT activity

	YE Dec 2024	YE Dec 2025	% Change
Total passengers carried (millions)	59.29	60.44	1.9
Revenue passenger kilometres (billions)	71.00	72.97	2.8
Available seats (millions)	74.51	74.84	0.4
Available seat kilometres (billions)	87.07	88.44	1.6
Load factor %	81.6	82.5	1.0*
Aircraft trips (000s)	614.3	603.2	-1.8

* percentage point difference

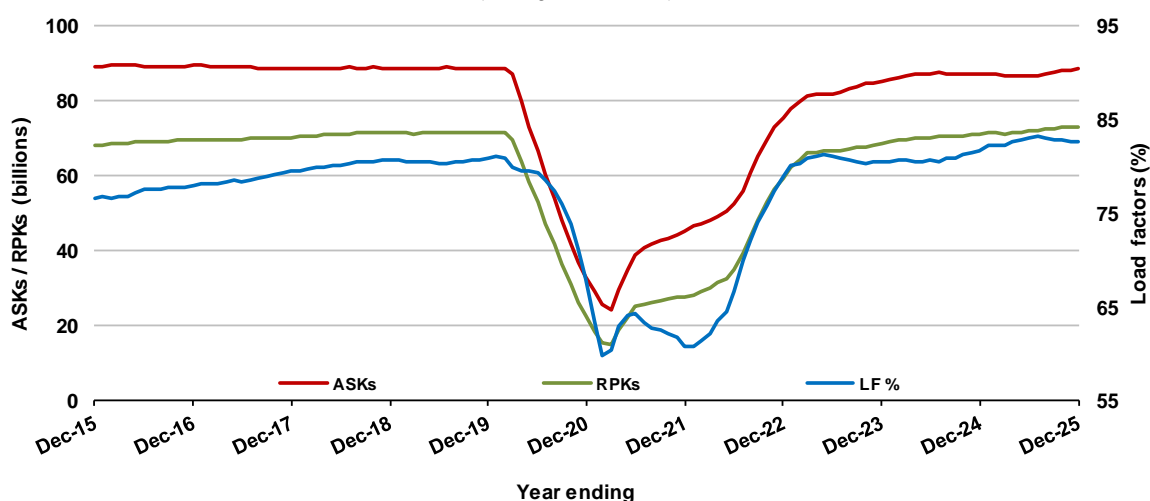
Domestic RPT passenger traffic

(moving annual totals)



RPT Network utilisation

(moving annual totals)



TOP COMPETITIVE ROUTES

Table 1: Passengers carried (000s) — annual activity

	City-Pair	YE Dec 2024	YE Dec 2025	% Change
1	Melbourne - Sydney	8,039.3	8,121.2	1.0
2	Brisbane - Sydney	4,358.3	4,383.0	0.6
3	Brisbane - Melbourne	3,499.3	3,646.1	4.2
4	Gold Coast - Sydney	2,538.0	2,527.7	-0.4
5	Adelaide - Melbourne	2,331.1	2,395.8	2.8
6	Gold Coast - Melbourne	2,187.9	2,146.9	-1.9
7	Melbourne - Perth	2,030.6	2,109.2	3.9
8	Adelaide - Sydney	1,883.8	1,904.9	1.1
9	Perth - Sydney	1,639.4	1,749.3	6.7
10	Hobart - Melbourne	1,373.1	1,460.5	6.4
11	Brisbane - Cairns	1,305.5	1,313.0	0.6
12	Brisbane - Perth	1,090.9	1,140.1	4.5
13	Brisbane - Townsville	940.8	990.8	5.3
14	Canberra - Melbourne	1,009.4	979.1	-3.0
15	Cairns - Sydney	919.2	927.1	0.9
16	Launceston - Melbourne	856.0	898.1	4.9
17	Cairns - Melbourne	824.8	878.1	6.5
18	Adelaide - Brisbane	875.3	874.9	-0.1
19	Hobart - Sydney	804.8	835.1	3.8
20	Brisbane - Mackay	761.3	822.8	8.1
21	Sunshine Coast - Sydney	777.8	798.8	2.7
22	Melbourne - Sunshine Coast	742.6	761.0	2.5
23	Adelaide - Perth	697.8	722.5	3.5
24	Karratha - Perth	608.6	687.5	13.0
25	Brisbane - Canberra	638.3	651.9	2.1
26	Canberra - Sydney	639.5	610.7	-4.5
27	Brisbane - Rockhampton	585.0	604.6	3.4
28	Brisbane - Newcastle	512.5	523.9	2.2
29	Perth - Port Hedland	475.3	487.2	2.5
30	Melbourne - Newcastle	457.3	470.6	2.9
31	Ballina - Sydney	523.2	466.9	-10.8
32	Newman - Perth	396.7	443.1	11.7
33	Kalgoorlie - Perth	366.9	396.7	8.1
34	Broome - Perth	355.0	374.3	5.4
35	Brisbane - Darwin	327.3	359.8	9.9
36	Launceston - Sydney	339.7	354.7	4.4
37	Brisbane - Hobart	307.0	321.7	4.8
38	Brisbane - Proserpine	277.9	294.3	5.9
39	Darwin - Melbourne	289.3	292.7	1.2
40	Adelaide - Gold Coast	279.8	277.8	-0.7
41	Hamilton Island - Sydney	246.9	251.6	1.9
42	Brisbane - Gladstone	224.4	218.1	-2.8
43	Coffs Harbour - Sydney	208.1	200.5	-3.6
44	Adelaide - Canberra	186.1	196.6	5.6
45	Darwin - Perth	182.5	192.0	5.2
46	Brisbane - Emerald	187.1	189.8	1.5
47	Canberra - Gold Coast	182.5	177.9	-2.6
48	Dubbo - Sydney	173.0	173.3	0.2
49	Brisbane - Hamilton Island	162.3	168.7	4.0
50	Sydney - Wagga Wagga	159.9	168.2	5.2

(continued)

Table 1: (continued) Passengers carried (000s) — annual activity

	City-Pair	YE Dec 2024	YE Dec 2025	% Change
51	Adelaide - Port Lincoln	169.5	167.5	-1.2
52	Port Macquarie - Sydney	165.8	166.6	0.5
53	Albury - Sydney	161.3	155.8	-3.4
54	Melbourne - Mildura	159.7	152.4	-4.6
55	Brisbane - Launceston	152.5	151.5	-0.6
56	Brisbane - Mount Isa	147.9	150.9	2.0
57	Devonport - Melbourne	124.6	148.8	19.4
58	Brisbane - Bundaberg	140.9	139.7	-0.9
59	Geraldton - Perth	113.3	121.9	7.6
60	Ayers Rock - Melbourne	107.3	112.8	5.1
61	Adelaide - Alice Springs	107.4	103.5	-3.6
62	Brisbane - Moranbah	112.1	100.3	-10.5
	Total domestic network	59,288.2	60,440.7	1.9

Table 2: Available seats (000s) — annual activity

	City-Pair	YE Dec 2024	YE Dec 2025	% Change
1	Melbourne - Sydney	9,650.1	9,546.6	-1.1
2	Brisbane - Sydney	5,198.4	5,099.5	-1.9
3	Brisbane - Melbourne	4,176.9	4,297.2	2.9
4	Gold Coast - Sydney	2,917.7	2,876.9	-1.4
5	Adelaide - Melbourne	2,780.0	2,854.9	2.7
6	Gold Coast - Melbourne	2,462.2	2,434.4	-1.1
7	Melbourne - Perth	2,428.6	2,433.3	0.2
8	Adelaide - Sydney	2,347.7	2,331.9	-0.7
9	Perth - Sydney	1,913.2	2,047.7	7.0
10	Hobart - Melbourne	1,654.1	1,691.4	2.3
11	Brisbane - Cairns	1,520.4	1,506.8	-0.9
12	Brisbane - Perth	1,287.0	1,349.9	4.9
13	Brisbane - Townsville	1,141.9	1,196.5	4.8
14	Canberra - Melbourne	1,348.1	1,281.4	-4.9
15	Cairns - Sydney	1,066.9	1,044.5	-2.1
16	Launceston - Melbourne	1,053.8	1,048.6	-0.5
17	Cairns - Melbourne	944.3	1,021.5	8.2
18	Adelaide - Brisbane	1,077.1	1,038.2	-3.6
19	Hobart - Sydney	989.2	979.4	-1.0
20	Brisbane - Mackay	945.8	1,077.9	14.0
21	Sunshine Coast - Sydney	921.9	937.6	1.7
22	Melbourne - Sunshine Coast	850.3	860.6	1.2
23	Adelaide - Perth	854.3	885.5	3.7
24	Karratha - Perth	885.4	968.8	9.4
25	Brisbane - Canberra	837.7	850.9	1.6
26	Canberra - Sydney	1,011.8	933.5	-7.7
27	Brisbane - Rockhampton	739.4	728.6	-1.5
28	Brisbane - Newcastle	622.5	630.5	1.3
29	Perth - Port Hedland	744.4	760.0	2.1
30	Melbourne - Newcastle	554.4	550.8	-0.6
31	Ballina - Sydney	611.4	536.3	-12.3
32	Newman - Perth	652.9	709.4	8.7
33	Kalgoorlie - Perth	654.5	694.9	6.2
34	Broome - Perth	466.3	491.5	5.4
35	Brisbane - Darwin	377.3	441.1	16.9
36	Launceston - Sydney	399.1	399.8	0.2
37	Brisbane - Hobart	356.8	358.5	0.5
38	Brisbane - Proserpine	321.1	327.4	1.9
39	Darwin - Melbourne	342.5	364.5	6.4
40	Adelaide - Gold Coast	313.6	306.1	-2.4
41	Hamilton Island - Sydney	317.3	307.6	-3.1
42	Brisbane - Gladstone	332.5	326.3	-1.9
43	Coffs Harbour - Sydney	271.2	274.7	1.3
44	Adelaide - Canberra	261.2	275.5	5.5
45	Darwin - Perth	247.1	264.4	7.0
46	Brisbane - Emerald	288.6	293.4	1.7
47	Canberra - Gold Coast	209.9	197.2	-6.1
48	Dubbo - Sydney	280.9	260.6	-7.2
49	Brisbane - Hamilton Island	212.5	210.6	-0.9
50	Sydney - Wagga Wagga	252.3	240.9	-4.5

(continued)

Table 2: (continued) Available seats (000s) — annual activity

	City-Pair	YE Dec 2024	YE Dec 2025	% Change
51	Adelaide - Port Lincoln	270.4	273.2	1.1
52	Port Macquarie - Sydney	239.9	226.5	-5.6
53	Albury - Sydney	231.2	210.8	-8.8
54	Melbourne - Mildura	216.3	215.6	-0.3
55	Brisbane - Launceston	177.8	169.6	-4.6
56	Brisbane - Mount Isa	232.4	241.0	3.7
57	Devonport - Melbourne	171.6	206.0	20.0
58	Brisbane - Bundaberg	218.6	210.9	-3.5
59	Geraldton - Perth	225.2	221.0	-1.9
60	Ayers Rock - Melbourne	134.5	135.7	0.9
61	Adelaide - Alice Springs	160.6	144.1	-10.2
62	Brisbane - Moranbah	199.5	193.7	-2.9
	Total domestic network	74,508.4	74,835.1	0.4

Table 3: Load factors (%) — annual activity

	City-Pair	YE Dec 2024	YE Dec 2025	% Change
1	Melbourne - Sydney	83.3	85.1	1.8
2	Brisbane - Sydney	83.8	85.9	2.1
3	Brisbane - Melbourne	83.8	84.9	1.1
4	Gold Coast - Sydney	87.0	87.9	0.9
5	Adelaide - Melbourne	83.9	84.1	0.3
6	Gold Coast - Melbourne	88.9	88.2	-0.7
7	Melbourne - Perth	83.6	86.7	3.1
8	Adelaide - Sydney	80.2	81.7	1.4
9	Perth - Sydney	85.7	85.4	-0.3
10	Hobart - Melbourne	83.0	86.3	3.3
11	Brisbane - Cairns	85.9	87.1	1.3
12	Brisbane - Perth	84.8	84.5	-0.3
13	Brisbane - Townsville	82.4	82.8	0.4
14	Canberra - Melbourne	74.9	76.4	1.5
15	Cairns - Sydney	86.2	88.7	2.6
16	Launceston - Melbourne	81.2	85.6	4.4
17	Cairns - Melbourne	87.3	86.0	-1.4
18	Adelaide - Brisbane	81.3	84.3	3.0
19	Hobart - Sydney	81.4	85.3	3.9
20	Brisbane - Mackay	80.5	76.3	-4.2
21	Sunshine Coast - Sydney	84.4	85.2	0.8
22	Melbourne - Sunshine Coast	87.3	88.4	1.1
23	Adelaide - Perth	81.7	81.6	-0.1
24	Karratha - Perth	68.7	71.0	2.2
25	Brisbane - Canberra	76.2	76.6	0.4
26	Canberra - Sydney	63.2	65.4	2.2
27	Brisbane - Rockhampton	79.1	83.0	3.9
28	Brisbane - Newcastle	82.3	83.1	0.8
29	Perth - Port Hedland	63.8	64.1	0.3
30	Melbourne - Newcastle	82.5	85.5	3.0
31	Ballina - Sydney	85.6	87.1	1.5
32	Newman - Perth	60.8	62.5	1.7
33	Kalgoorlie - Perth	55.9	57.1	1.2
34	Broome - Perth	76.1	76.2	0.0
35	Brisbane - Darwin	86.7	81.6	-5.2
36	Launceston - Sydney	85.1	88.7	3.6
37	Brisbane - Hobart	86.1	89.7	3.7
38	Brisbane - Proserpine	86.5	89.9	3.4
39	Darwin - Melbourne	84.5	80.3	-4.2
40	Adelaide - Gold Coast	89.2	90.8	1.5
41	Hamilton Island - Sydney	77.8	81.8	4.0
42	Brisbane - Gladstone	67.5	66.9	-0.6
43	Coffs Harbour - Sydney	76.7	73.0	-3.7
44	Adelaide - Canberra	71.3	71.4	0.1
45	Darwin - Perth	73.9	72.6	-1.2
46	Brisbane - Emerald	64.8	64.7	-0.1
47	Canberra - Gold Coast	87.0	90.2	3.2
48	Dubbo - Sydney	61.6	66.5	4.9
49	Brisbane - Hamilton Island	76.4	80.1	3.8
50	Sydney - Wagga Wagga	63.4	69.8	6.4

(continued)

Table 3: (continued) Load factors (%) — annual activity

	City-Pair	YE Dec 2024	YE Dec 2025	% Change
51	Adelaide - Port Lincoln	62.7	61.3	-1.4
52	Port Macquarie - Sydney	69.1	73.5	4.4
53	Albury - Sydney	69.8	73.9	4.2
54	Melbourne - Mildura	73.8	70.7	-3.2
55	Brisbane - Launceston	85.8	89.3	3.5
56	Brisbane - Mount Isa	63.7	62.6	-1.0
57	Devonport - Melbourne	72.6	72.2	-0.4
58	Brisbane - Bundaberg	64.5	66.2	1.8
59	Geraldton - Perth	50.1	55.2	5.0
60	Ayers Rock - Melbourne	79.8	83.1	3.3
61	Adelaide - Alice Springs	66.9	71.8	5.0
62	Brisbane - Moranbah	56.2	51.8	-4.4
	Total domestic network	81.6	82.5	1.0

Table 4: Aircraft trips ^(a) — annual activity

	City-Pair	YE Dec 2024	YE Dec 2025	% Change
1	Melbourne - Sydney	55,633	54,480	-2.1
2	Brisbane - Sydney	31,444	30,359	-3.5
3	Brisbane - Melbourne	24,965	26,008	4.2
4	Gold Coast - Sydney	16,439	16,306	-0.8
5	Adelaide - Melbourne	16,732	18,241	9.0
6	Gold Coast - Melbourne	13,408	13,127	-2.1
7	Melbourne - Perth	13,381	13,638	1.9
8	Adelaide - Sydney	14,016	13,593	-3.0
9	Perth - Sydney	10,097	10,905	8.0
10	Hobart - Melbourne	9,813	9,722	-0.9
11	Brisbane - Cairns	10,547	10,873	3.1
12	Brisbane - Perth	7,434	7,649	2.9
13	Brisbane - Townsville	8,727	9,167	5.0
14	Canberra - Melbourne	9,023	8,324	-7.7
15	Cairns - Sydney	5,641	5,590	-0.9
16	Launceston - Melbourne	8,117	7,756	-4.4
17	Cairns - Melbourne	4,883	5,328	9.1
18	Adelaide - Brisbane	8,246	7,987	-3.1
19	Hobart - Sydney	5,700	5,645	-1.0
20	Brisbane - Mackay	7,533	7,872	4.5
21	Sunshine Coast - Sydney	5,138	5,209	1.4
22	Melbourne - Sunshine Coast	4,594	4,589	-0.1
23	Adelaide - Perth	4,843	4,887	0.9
24	Karratha - Perth	5,329	5,843	9.6
25	Brisbane - Canberra	6,742	6,936	2.9
26	Canberra - Sydney	14,739	14,448	-2.0
27	Brisbane - Rockhampton	8,137	7,816	-3.9
28	Brisbane - Newcastle	5,352	5,221	-2.4
29	Perth - Port Hedland	4,609	4,789	3.9
30	Melbourne - Newcastle	3,599	3,579	-0.6
31	Ballina - Sydney	4,150	3,491	-15.9
32	Newman - Perth	4,052	4,268	5.3
33	Kalgoorlie - Perth	4,425	4,709	6.4
34	Broome - Perth	3,065	3,167	3.3
35	Brisbane - Darwin	2,697	2,476	-8.2
36	Launceston - Sydney	2,461	2,490	1.2
37	Brisbane - Hobart	2,232	2,186	-2.1
38	Brisbane - Proserpine	2,014	1,959	-2.7
39	Darwin - Melbourne	1,992	2,020	1.4
40	Adelaide - Gold Coast	1,601	1,541	-3.7
41	Hamilton Island - Sydney	1,798	1,736	-3.4
42	Brisbane - Gladstone	3,912	3,742	-4.3
43	Coffs Harbour - Sydney	4,730	4,185	-11.5
44	Adelaide - Canberra	2,398	2,566	7.0
45	Darwin - Perth	1,437	1,532	6.6
46	Brisbane - Emerald	4,009	3,844	-4.1
47	Canberra - Gold Coast	1,172	1,090	-7.0
48	Dubbo - Sydney	5,307	4,936	-7.0
49	Brisbane - Hamilton Island	1,503	1,521	1.2
50	Sydney - Wagga Wagga	4,509	4,293	-4.8

(continued)

Table 4: (continued) Aircraft trips ^(a) — annual activity

	City-Pair	YE Dec 2024	YE Dec 2025	% Change
51	Adelaide - Port Lincoln	6,582	5,705	-13.3
52	Port Macquarie - Sydney	4,022	3,915	-2.7
53	Albury - Sydney	4,229	3,787	-10.5
54	Melbourne - Mildura	4,813	4,186	-13.0
55	Brisbane - Launceston	1,039	964	-7.2
56	Brisbane - Mount Isa	2,184	2,387	9.3
57	Devonport - Melbourne	3,739	3,396	-9.2
58	Brisbane - Bundaberg	3,544	3,431	-3.2
59	Geraldton - Perth	2,471	2,429	-1.7
60	Ayers Rock - Melbourne	742	758	2.2
61	Adelaide - Alice Springs	1,897	1,698	-10.5
62	Brisbane - Moranbah	2,658	2,566	-3.5
	Total domestic network	614,300	603,231	-1.8

(a) Includes RPT Cargo flights.

TOP TEN AIRPORTS – PASSENGER MOVEMENTS

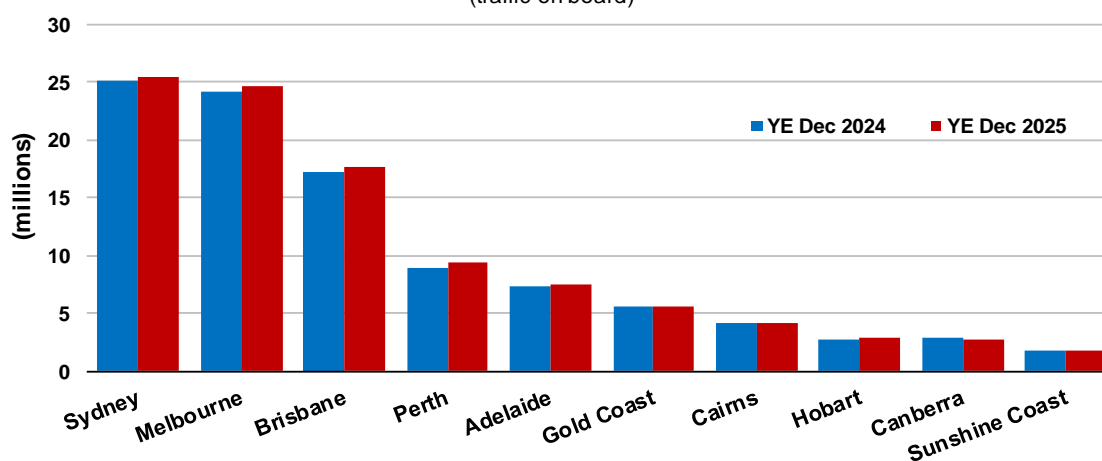
Table 5: Top ten airports, RPT passenger movements (000s) — annual activity

Airport	YE Dec 2024	YE Dec 2025	% Change	% of Total
1 Sydney	25,136.0	25,413.9	1.1	21.0
2 Melbourne	24,146.5	24,589.5	1.8	20.3
3 Brisbane	17,115.0	17,586.8	2.8	14.5
4 Perth	8,888.2	9,356.1	5.3	7.7
5 Adelaide	7,387.5	7,538.6	2.0	6.2
6 Gold Coast	5,578.6	5,500.2	-1.4	4.6
7 Cairns	4,088.7	4,183.3	2.3	3.5
8 Hobart	2,729.3	2,865.4	5.0	2.4
9 Canberra	2,797.6	2,763.8	-1.2	2.3
10 Sunshine Coast	1,699.1	1,688.6	-0.6	1.4
Total top ten airports	99,566.6	101,486.0	1.9	84.0
Total domestic network	118,576.5	120,881.3	1.9	100.0

Note: Airport passenger movement numbers are the sum of passenger arrivals and departures at each airport.

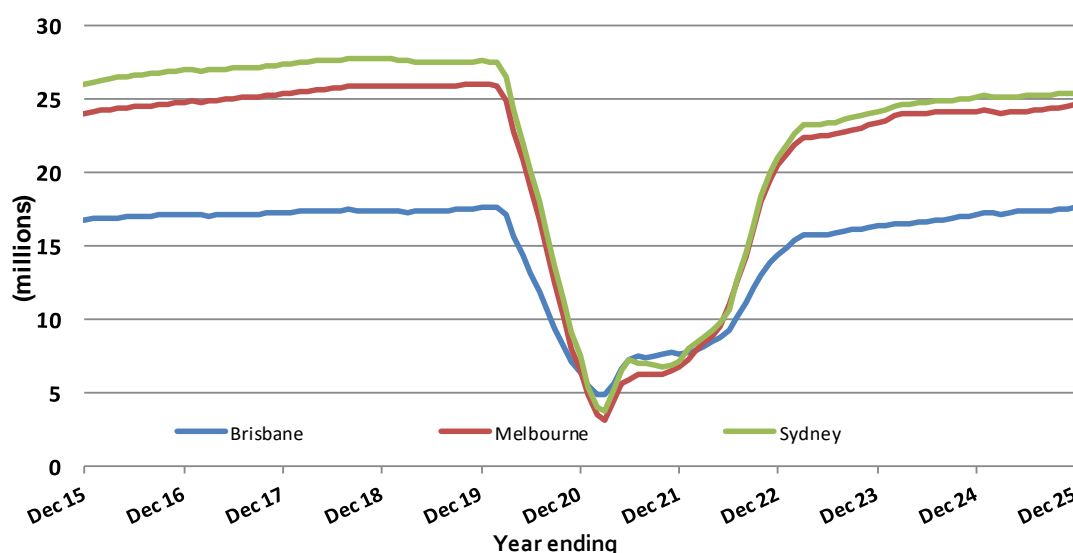
Top ten airports, RPT passenger movements

(traffic on board)



Top three airports, domestic passenger movements

(moving annual totals - traffic on board)



TOP FIVE AIRPORTS – CARGO MOVEMENTS

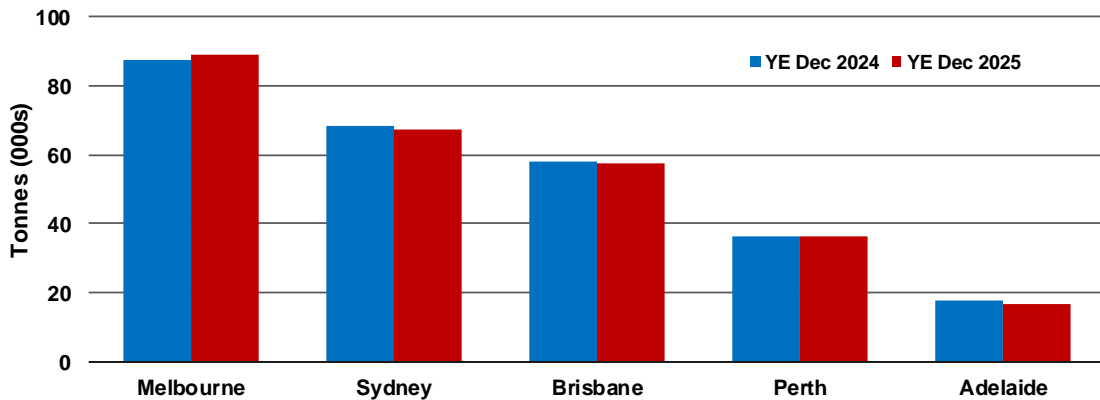
Table 6: Top five airports, domestic RPT cargo movements (000s tonnes) - annual activity

Airport	YE Dec 2024	YE Dec 2025	% Change	% of Total
1 Melbourne	87.6	89.0	1.6	27.7
2 Sydney	68.3	67.4	-1.4	21.0
3 Brisbane	58.0	57.4	-1.1	17.9
4 Perth	36.4	36.2	-0.7	11.3
5 Adelaide	17.7	16.5	-7.2	5.1
Total top five airports	268.0	266.3	-0.6	83.0
Total domestic network	320.3	320.8	0.1	100.0

Note: Airport cargo tonnes are the sum of cargo tonnes on arrivals and departures at each airport.

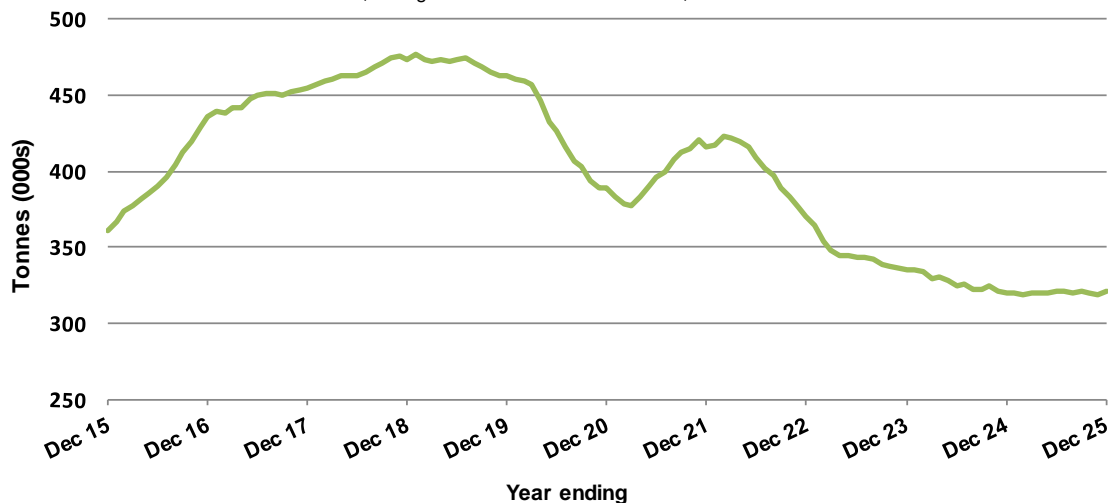
Top five airports, cargo movements

(Domestic cargo traffic - traffic on board)



Total domestic network - cargo movements

(moving annual totals - traffic on board)



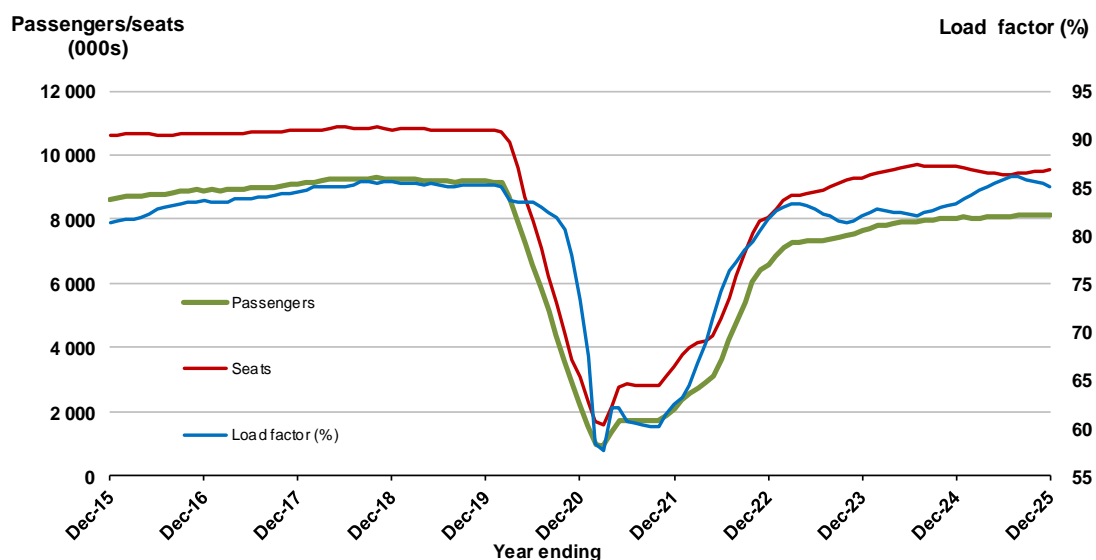
TOP TWENTY ROUTES

1. Melbourne - Sydney

Moving annual data

	YE Dec 2024	YE Dec 2025	% Change
Passengers carried (000s)	8,039.3	8,121.2	1.0
Seats (000s)	9,650.1	9,546.6	-1.1
Load factor %	83.3	85.1	1.8 *
Aircraft trips	55,633	54,480	-2.1

* percentage point difference

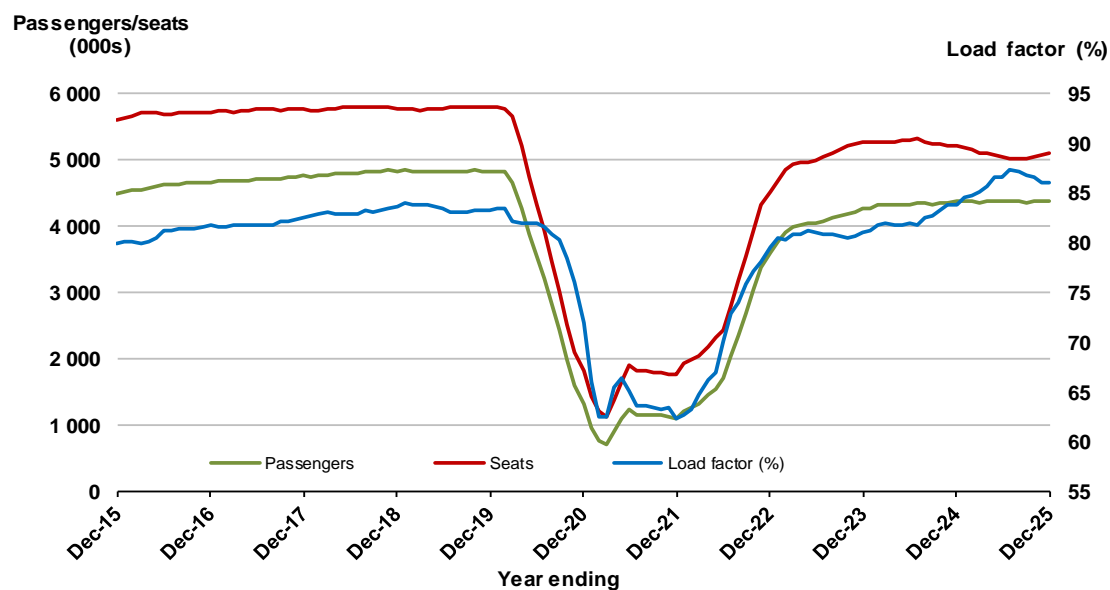


2. Brisbane - Sydney

Moving annual data

	YE Dec 2024	YE Dec 2025	% Change
Passengers carried (000s)	4,358.3	4,383.0	0.6
Seats (000s)	5,198.4	5,099.5	-1.9
Load factor %	83.8	85.9	2.1 *
Aircraft trips	31,444	30,359	-3.5

* percentage point difference

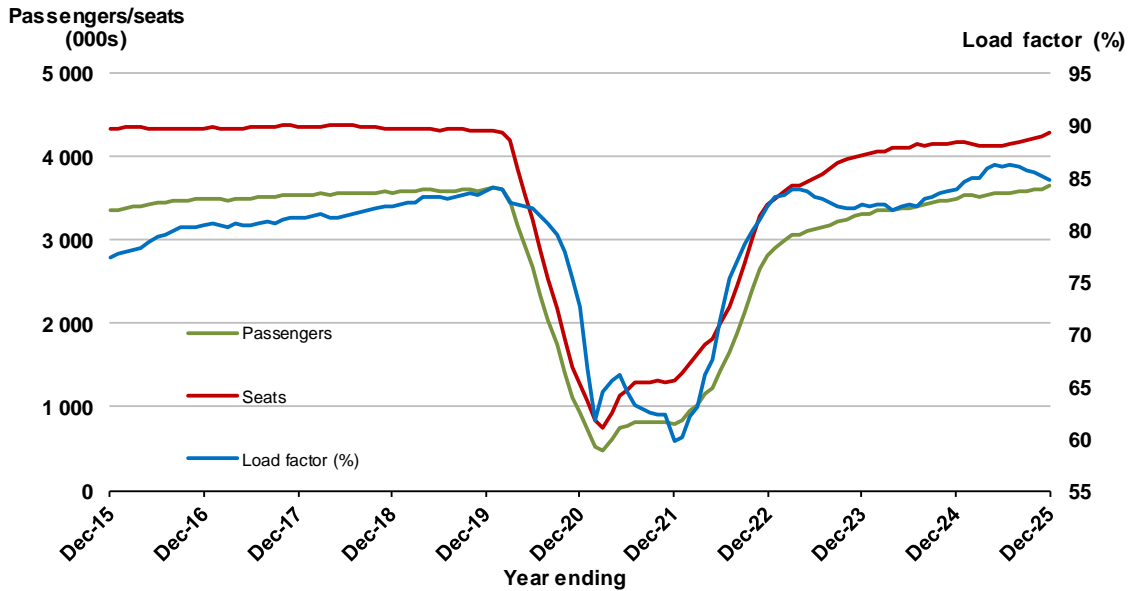


3. Brisbane - Melbourne

Moving annual data

	YE Dec 2024	YE Dec 2025	% Change
Passengers carried (000s)	3,499.3	3,646.1	4.2
Seats (000s)	4,176.9	4,297.2	2.9
Load factor %	83.8	84.9	1.1 *
Aircraft trips	24,965	26,008	4.2

* percentage point difference

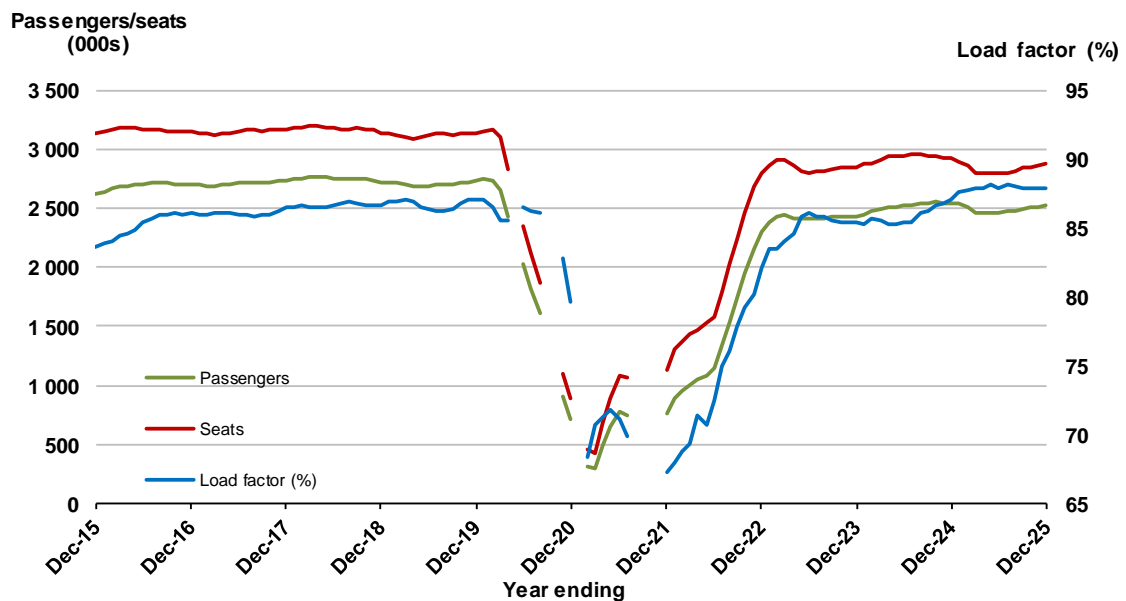


4. Gold Coast - Sydney (a)

Moving annual data

	YE Dec 2024	YE Dec 2025	% Change
Passengers carried (000s)	2,538.0	2,527.7	-0.4
Seats (000s)	2,917.7	2,876.9	-1.4
Load factor %	87.0	87.9	0.9 *
Aircraft trips	16,439	16,306	-0.8

* percentage point difference



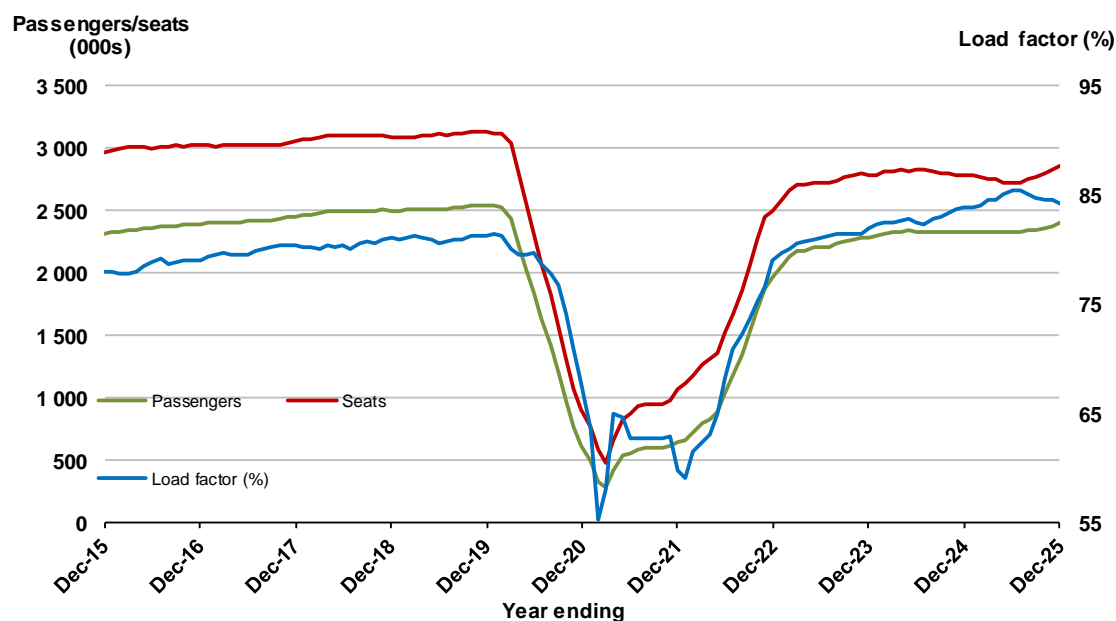
(a) May, September and October 2020 and January and August to November 2021 moving annual totals not available for release.

5. Adelaide - Melbourne

Moving annual data

	YE Dec 2024	YE Dec 2025	% Change
Passengers carried (000s)	2,331.1	2,395.8	2.8
Seats (000s)	2,780.0	2,854.9	2.7
Load factor %	83.9	84.1	0.3 *
Aircraft trips	16,732	18,241	9.0

* percentage point difference

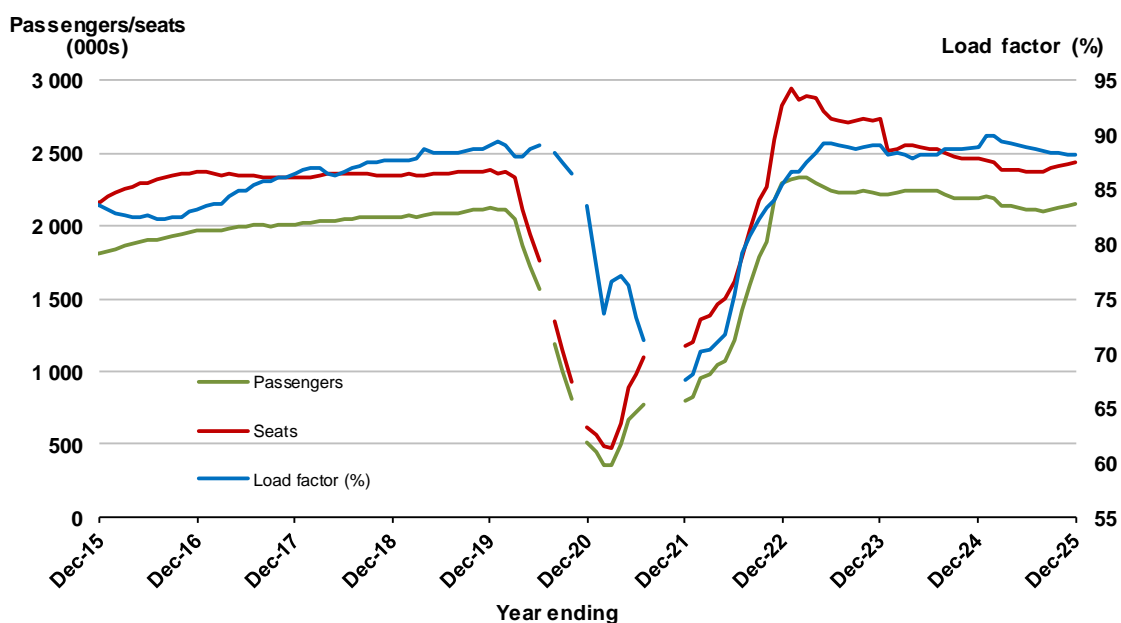


6. Gold Coast - Melbourne ^(a)

Moving annual data

	YE Dec 2024	YE Dec 2025	% Change
Passengers carried (000s)	2,187.9	2,146.9	-1.9
Seats (000s)	2,462.2	2,434.4	-1.1
Load factor %	88.9	88.2	-0.7 *
Aircraft trips	13,408	13,127	-2.1

* percentage point difference



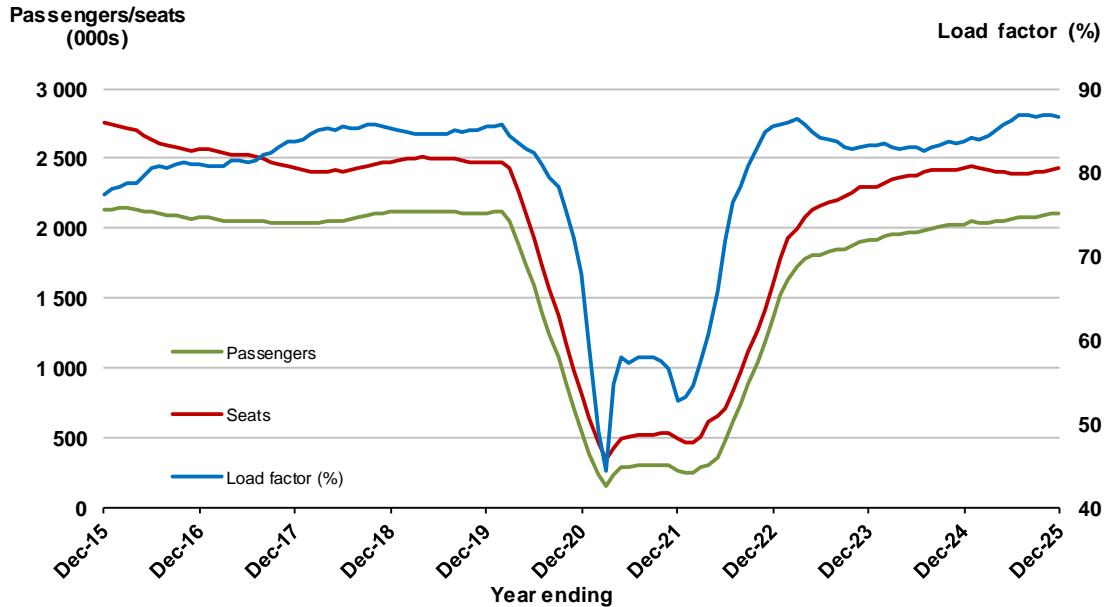
(a) July and November 2020 and August to November 2021 moving annuals are not available for release.

7. Melbourne - Perth

Moving annual data

	YE Dec 2024	YE Dec 2025	% Change
Passengers carried (000s)	2,030.6	2,109.2	3.9
Seats (000s)	2,428.6	2,433.3	0.2
Load factor %	83.6	86.7	3.1 *
Aircraft trips	13,381	13,638	1.9

* percentage point difference

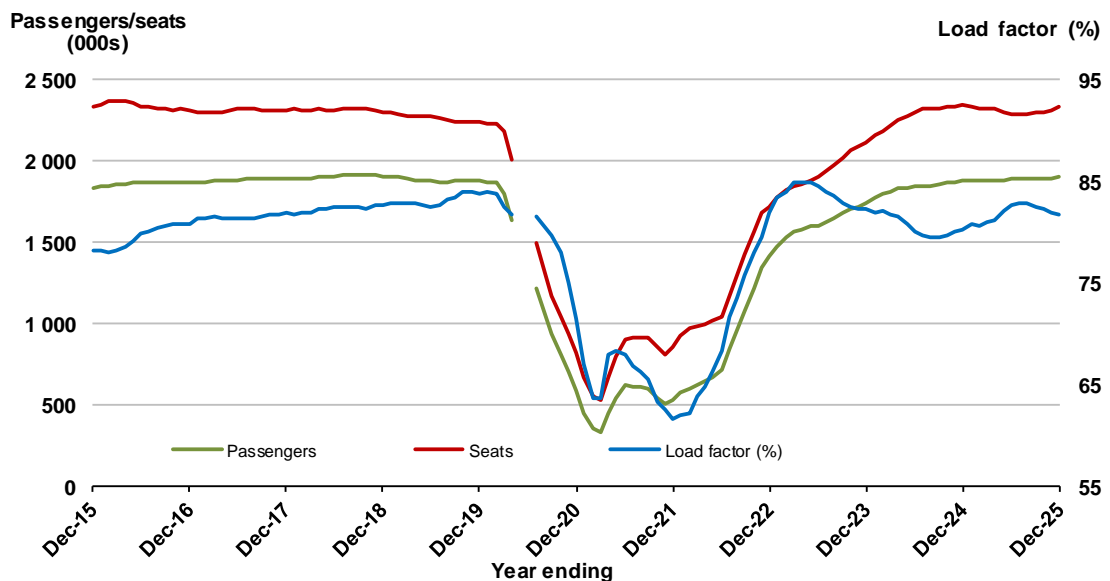


8. Adelaide - Sydney ^(a)

Moving annual data

	YE Dec 2024	YE Dec 2025	% Change
Passengers carried (000s)	1,883.8	1,904.9	1.1
Seats (000s)	2,347.7	2,331.9	-0.7
Load factor %	80.2	81.7	1.4 *
Aircraft trips	14,016	13,593	-3.0

* percentage point difference



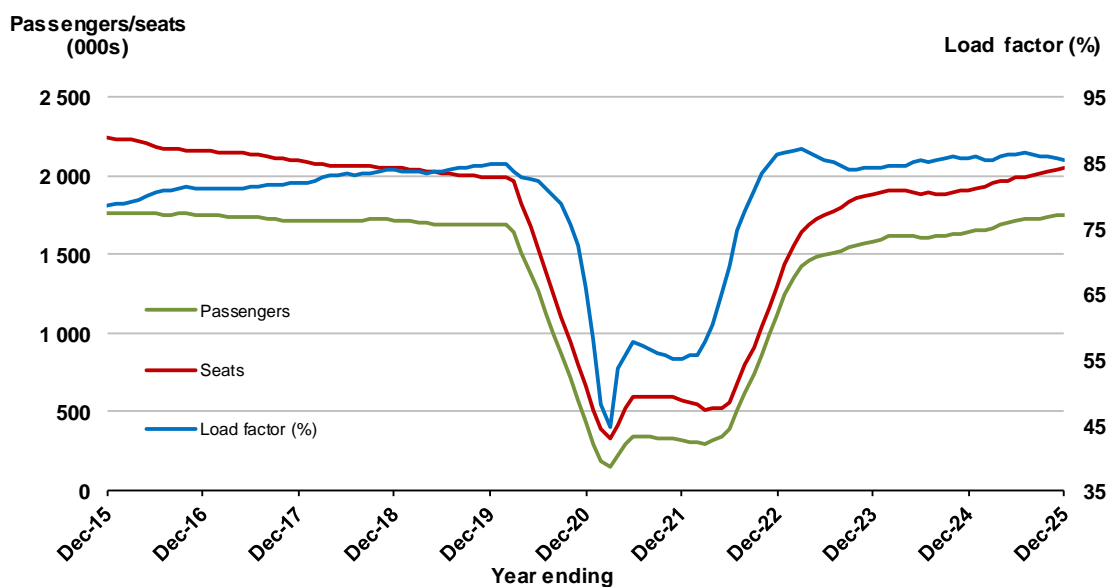
(a) May and June 2020 moving annuals are not available for release.

9. Perth - Sydney

Moving annual data

	YE Dec 2024	YE Dec 2025	% Change
Passengers carried (000s)	1,639.4	1,749.3	6.7
Seats (000s)	1,913.2	2,047.7	7.0
Load factor %	85.7	85.4	-0.3*
Aircraft trips	10,097	10,905	8.0

* percentage point difference

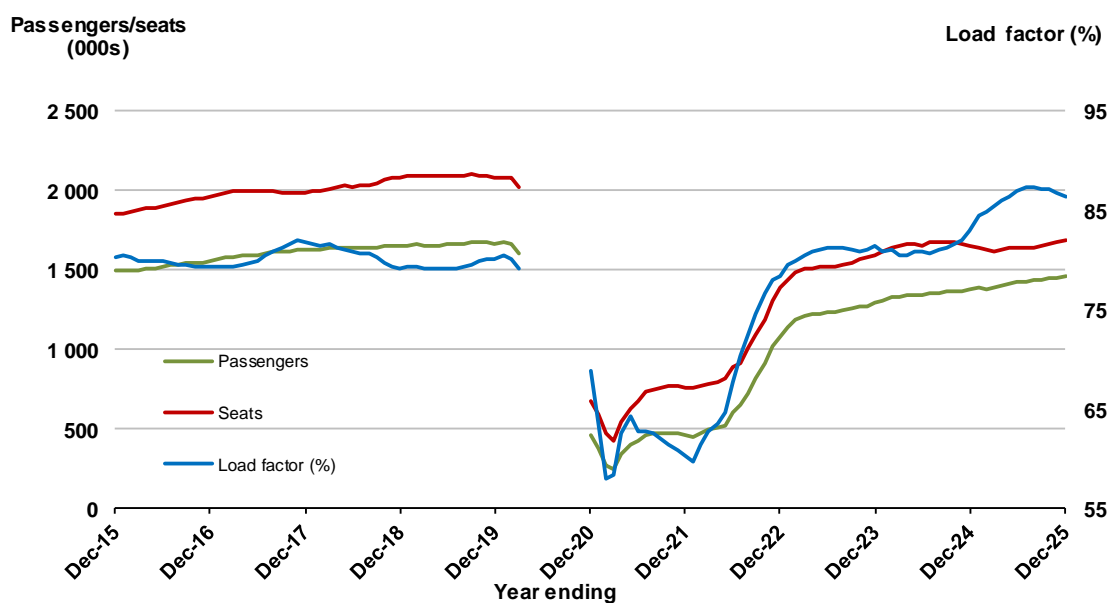


10. Hobart - Melbourne (a)

Moving annual data

	YE Dec 2024	YE Dec 2025	% Change
Passengers carried (000s)	1,373.1	1,460.5	6.4
Seats (000s)	1,654.1	1,691.4	2.3
Load factor %	83.0	86.3	3.3*
Aircraft trips	9,813	9,722	-0.9

* percentage point difference



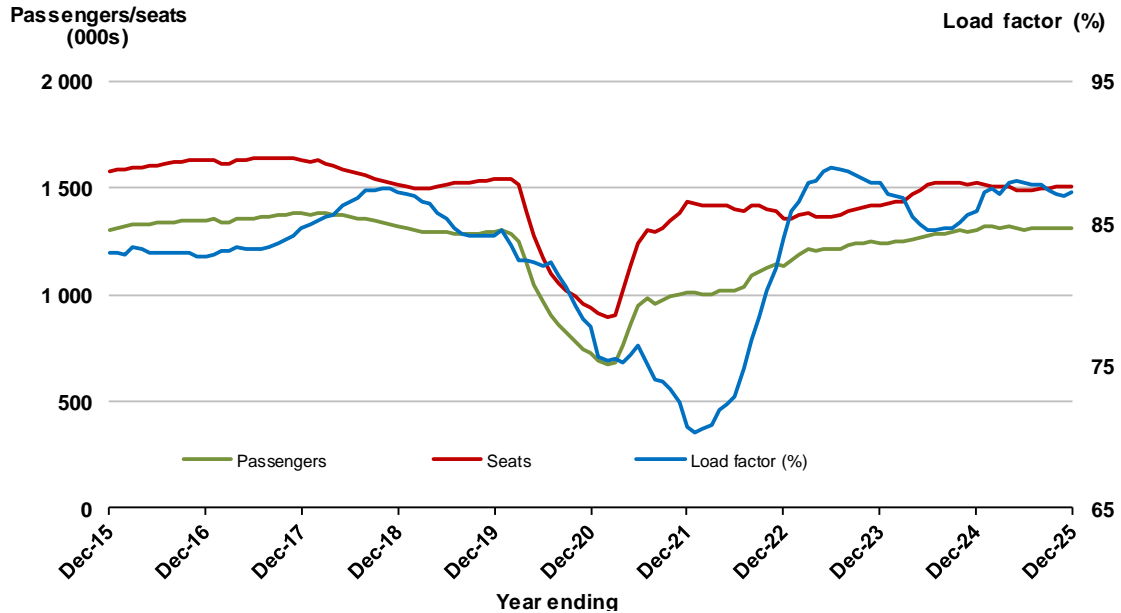
(a) April to November 2020 moving annuals are not available for release.

11. Brisbane - Cairns

Moving annual data

	YE Dec 2024	YE Dec 2025	% Change
Passengers carried (000s)	1,305.5	1,313.0	0.6
Seats (000s)	1,520.4	1,506.8	-0.9
Load factor %	85.9	87.1	1.3
Aircraft trips	10,547	10,873	3.1

* percentage point difference

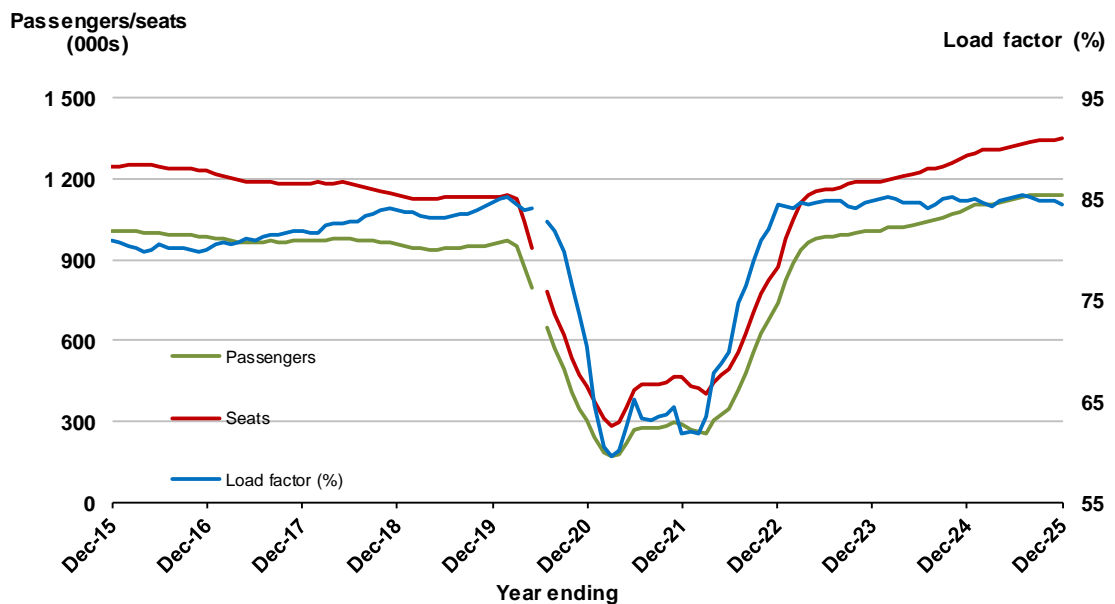


12. Brisbane - Perth (a)

Moving annual data

	YE Dec 2024	YE Dec 2025	% Change
Passengers carried (000s)	1,090.9	1,140.1	4.5
Seats (000s)	1,287.0	1,349.9	4.9
Load factor %	84.8	84.5	-0.3
Aircraft trips	7,434	7,649	2.9

* percentage point difference



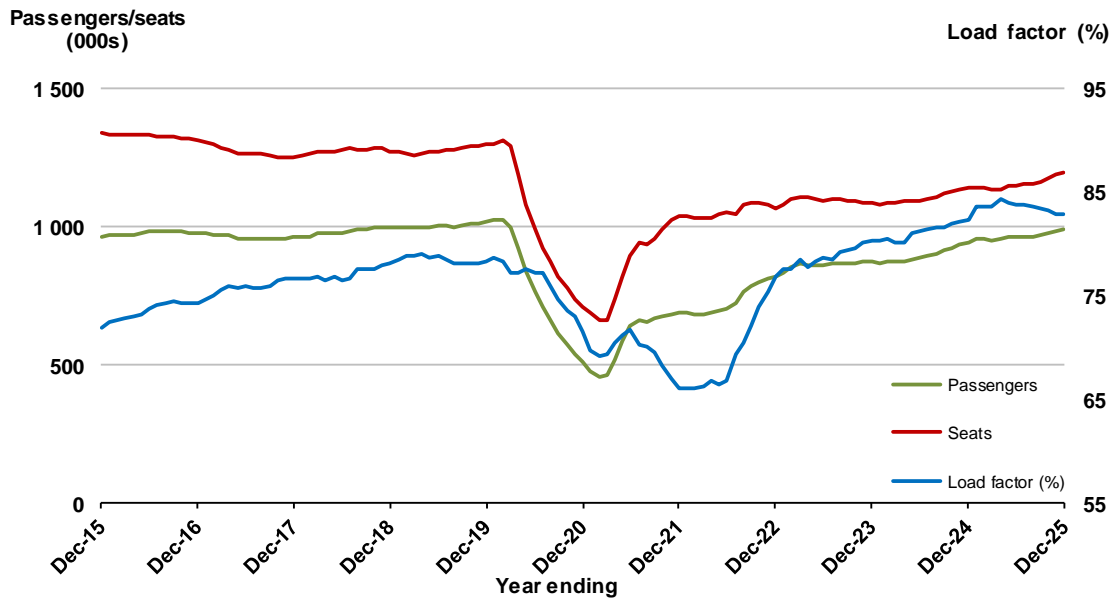
(a) June 2020 moving annuals are not available for release.

13. Brisbane - Townsville

Moving annual data

	YE Dec 2024	YE Dec 2025	% Change
Passengers carried (000s)	940.8	990.8	5.3
Seats (000s)	1,141.9	1,196.5	4.8
Load factor %	82.4	82.8	0.4*
Aircraft trips	8,727	9,167	5.0

* percentage point difference

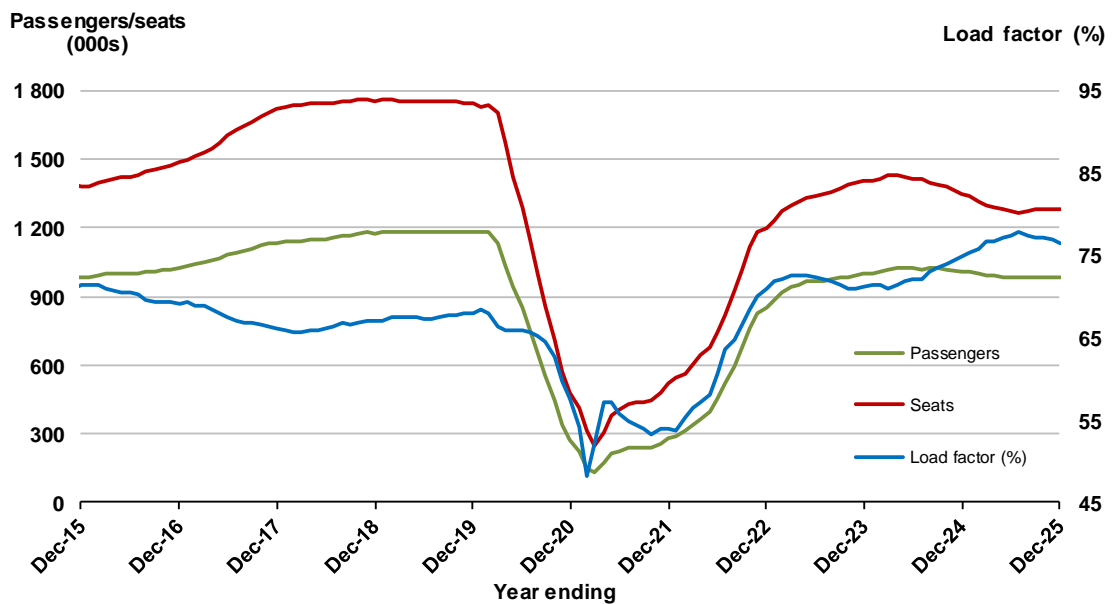


14. Canberra - Melbourne

Moving annual data

	YE Dec 2024	YE Dec 2025	% Change
Passengers carried (000s)	1,009.4	979.1	-3.0
Seats (000s)	1,348.1	1,281.4	-4.9
Load factor %	74.9	76.4	1.5*
Aircraft trips	9,023	8,324	-7.7

* percentage point difference

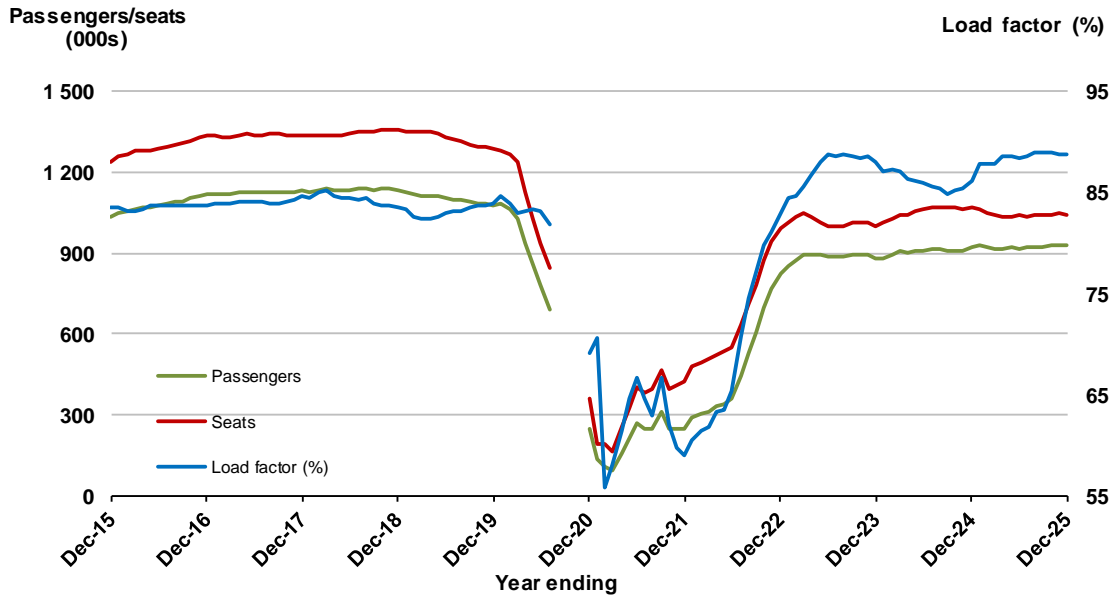


15. Cairns - Sydney ^(a)

Moving annual data

	YE Dec 2024	YE Dec 2025	% Change
Passengers carried (000s)	919.2	927.1	0.9
Seats (000s)	1,066.9	1,044.5	-2.1
Load factor %	86.2	88.7	2.6 *
Aircraft trips	5,641	5,590	-0.9

* percentage point difference



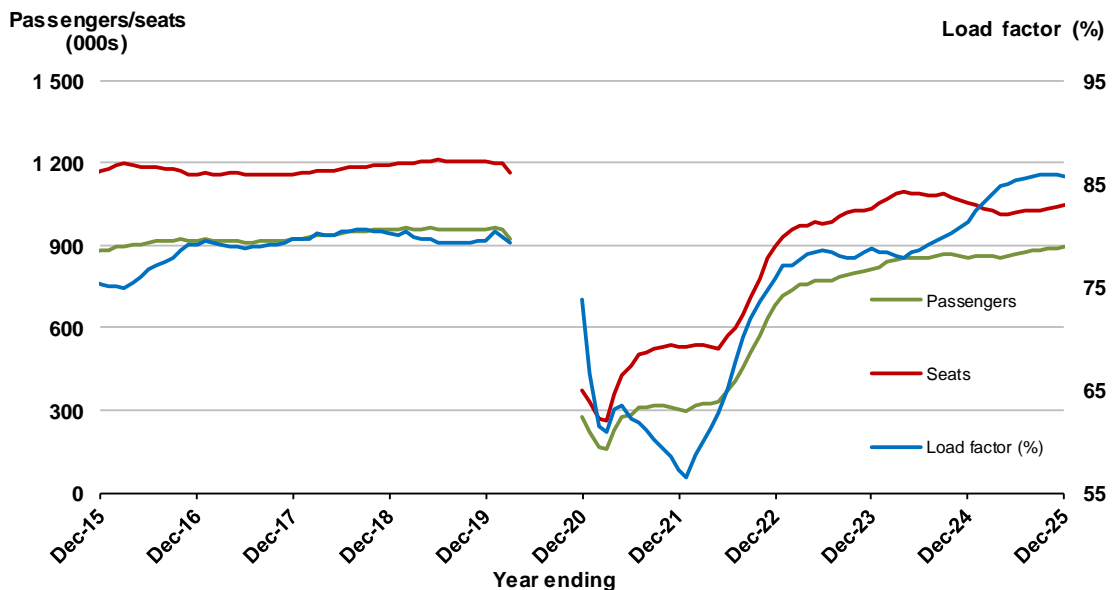
(a) April to November 2020 moving annuals are not available for release.

16. Launceston - Melbourne ^(a)

Moving annual data

	YE Dec 2024	YE Dec 2025	% Change
Passengers carried (000s)	856.0	898.1	4.9
Seats (000s)	1,053.8	1,048.6	-0.5
Load factor %	81.2	85.6	4.4 *
Aircraft trips	8,117	7,756	-4.4

* percentage point difference



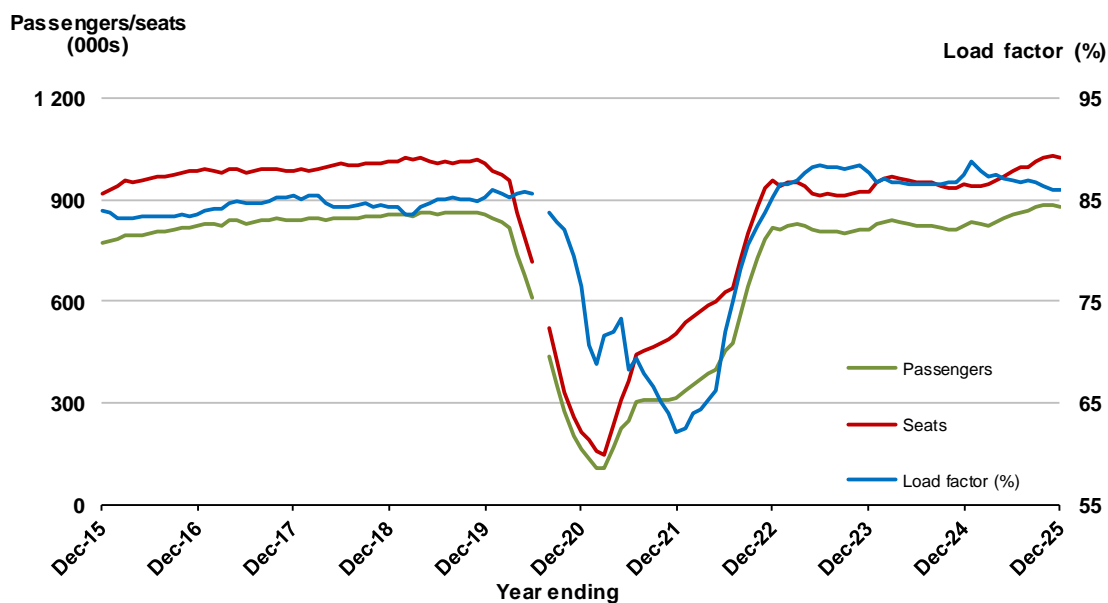
(a) April to November 2020 moving annuals are not available for release.

17. Cairns - Melbourne ^(a)

Moving annual data

	YE Dec 2024	YE Dec 2025	% Change
Passengers carried (000s)	824.8	878.1	6.5
Seats (000s)	944.3	1,021.5	8.2
Load factor %	87.3	86.0	-1.4 *
Aircraft trips	4,883	5,328	9.1

* percentage point difference



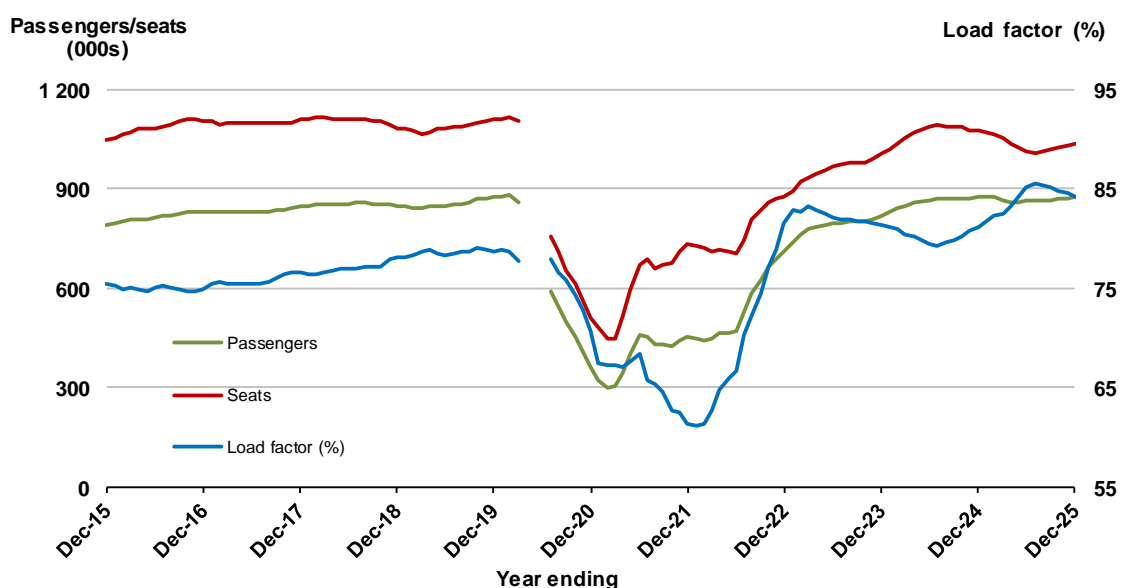
(a) April to November 2020 moving annuals are not available for release.

18. Adelaide - Brisbane ^(a)

Moving annual data

	YE Dec 2024	YE Dec 2025	% Change
Passengers carried (000s)	875.3	874.9	-0.1
Seats (000s)	1,077.1	1,038.2	-3.6
Load factor %	81.3	84.3	3.0 *
Aircraft trips	8,246	7,987	-3.1

* percentage point difference



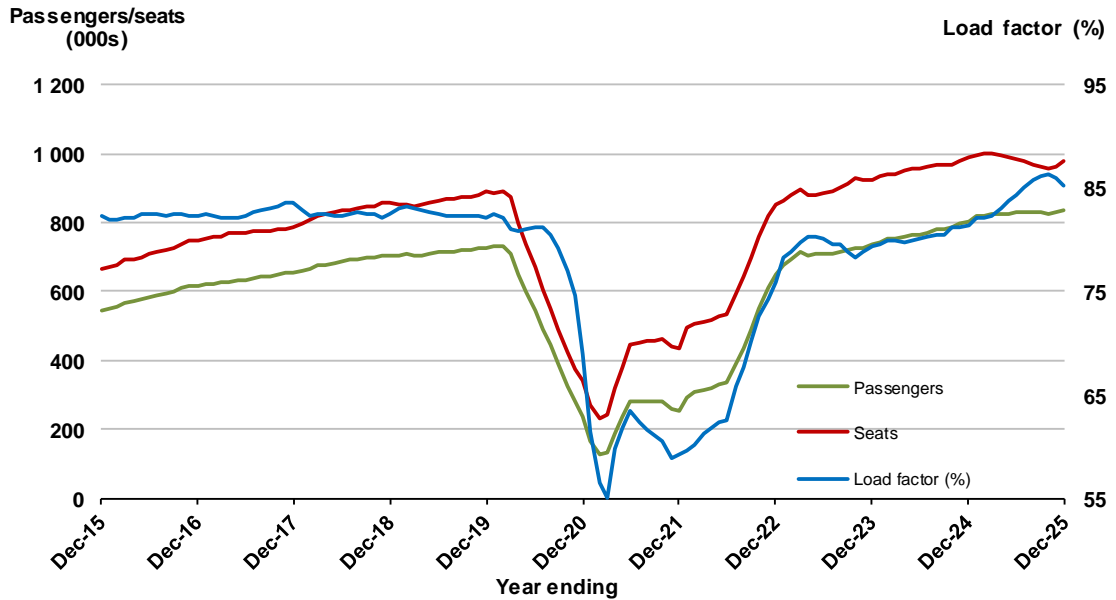
(a) April to June 2020 moving annuals are not available for release.

19. Hobart - Sydney

Moving annual data

	YE Dec 2024	YE Dec 2025	% Change
Passengers carried (000s)	804.8	835.1	3.8
Seats (000s)	989.2	979.4	-1.0
Load factor %	81.4	85.3	3.9 *
Aircraft trips	5,700	5,645	-1.0

* percentage point difference

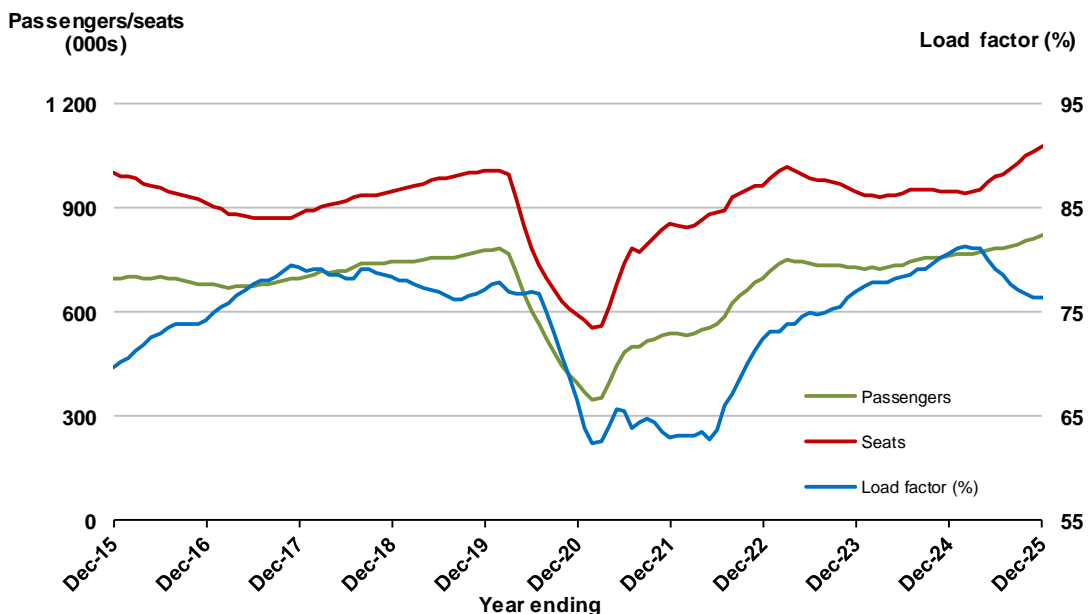


20. Brisbane - Mackay

Moving annual data

	YE Dec 2024	YE Dec 2025	% Change
Passengers carried (000s)	761.3	822.8	8.1
Seats (000s)	945.8	1,077.9	14.0
Load factor %	80.5	76.3	-4.2 *
Aircraft trips	7,533	7,872	4.5

* percentage point difference



TOP FIFTY REGIONAL AIRPORTS

Table 7: Top fifty regional airports (000s) — passenger movements, annual

Airport	YE Dec 2024	YE Dec 2025	% Change
1 Cairns	4 088.7	4 183.3	2.3
2 Hobart	2 729.3	2 865.4	5.0
3 Townsville	1 663.9	1 663.2	0.0
4 Darwin	1 606.7	1 660.3	3.3
5 Launceston	1 418.5	1 464.5	3.2
6 Newcastle	1 200.1	1 213.4	1.1
7 Mackay	900.4	934.6	3.8
8 Karratha	620.8	702.8	13.2
9 Rockhampton	656.0	642.8	-2.0
10 Ballina	628.2	578.8	-7.9
11 Proserpine	507.2	549.7	8.4
12 Port Hedland	488.7	501.1	2.5
13 Hamilton Island	488.5	494.6	1.2
14 Broome	439.2	455.4	3.7
15 Newman	397.8	443.9	11.6
16 Kalgoorlie	367.6	397.1	8.0
17 Alice Springs	372.0	364.2	-2.1
18 Ayers Rock	317.2	352.6	11.1
19 Coffs Harbour	251.3	263.1	4.7
20 Paraburdoo	276.3	249.7	-9.6
21 Mount Isa	238.7	232.4	-2.6
22 Albury	253.1	223.5	-11.7
23 Wagga Wagga	207.5	221.5	6.8
24 Hervey Bay	183.3	218.8	19.4
25 Gladstone	233.9	218.2	-6.7
26 Dubbo	208.3	208.8	0.2
27 Emerald	198.8	201.0	1.1
28 Port Macquarie	206.3	193.8	-6.1
29 Mildura	209.3	187.7	-10.4
30 Port Lincoln	169.5	167.6	-1.1
31 Tamworth	165.0	159.2	-3.5
32 Devonport	124.8	149.0	19.5
33 Bundaberg	152.4	139.8	-8.3
34 Kununurra	140.2	139.5	-0.5
35 Geraldton	119.6	129.4	8.2
36 Orange	110.5	122.1	10.5
37 Thursday Island	117.2	117.0	-0.2
38 Learmonth	106.8	110.5	3.4
39 Armidale	104.8	104.1	-0.6
40 Olympic Dam	102.6	103.3	0.6
41 Moranbah	112.2	100.4	-10.5
42 Weipa	92.4	99.8	8.0
43 Busselton	86.6	97.9	13.0
44 Gove	93.4	85.2	-8.7
45 Burnie	78.5	82.6	5.2
46 Griffith	69.8	77.3	10.8
47 Mount Gambier	71.5	72.9	2.0
48 Merimbula	68.8	72.2	4.9
49 Norfolk Island	70.5	69.8	-1.1
50 Albany	67.1	66.1	-1.5
Total top 50 regional airports	23,582.0	24,151.8	2.4
Total regional airports	25,020.3	25,586.2	2.3
Total domestic network	118,576.5	120,881.3	1.9

Note: Airport passenger movement numbers are the sum of passenger arrivals and departures at each airport. Regional airports are defined as airports which are, according to the Australian Bureau of Statistics "The Australian Statistical Geography Standard (ASGS)", not based in Major Urban areas.

DOMESTIC CHARTER ACTIVITY

Table 8: Charter passengers carried and aircraft trips - annual activity (000s)

	YE Dec 2024	YE Dec 2025	% Change
Total domestic charter passengers	4 327.7	4 347.7	0.5
Total domestic charter aircraft trips	73.8	74.1	0.4

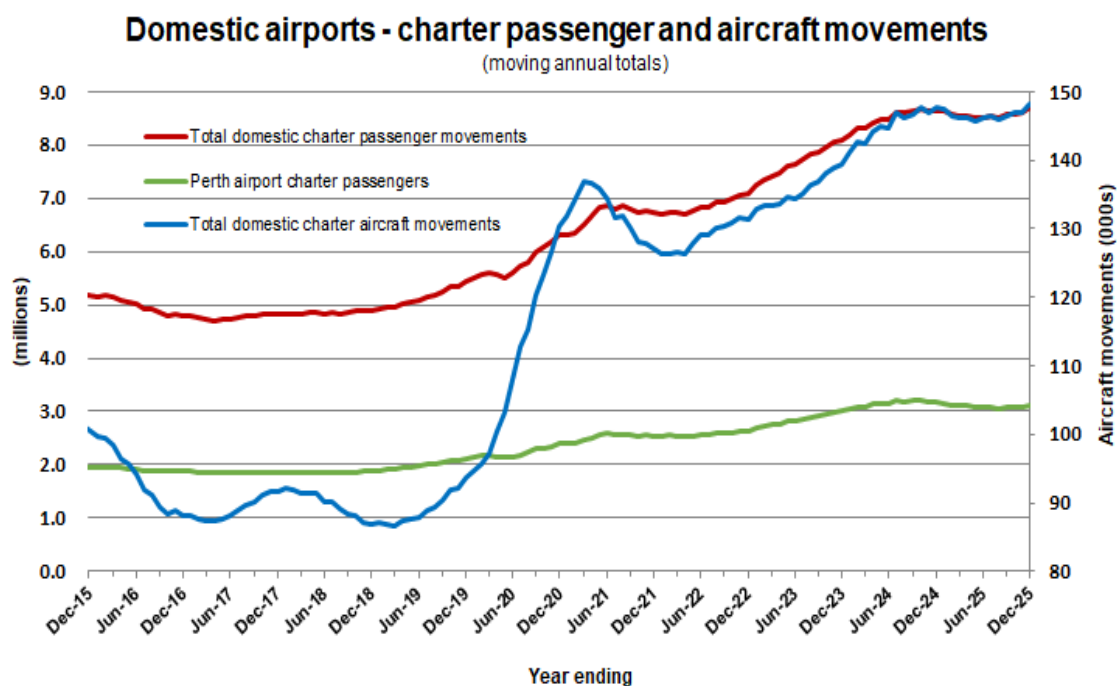
Note: Helicopter, joyflights and sightseeing charter flights not included.

Table 9: Domestic airports - charter activity - annual activity (000s)

	YE Dec 2024	YE Dec 2025	% Change
Total domestic charter passenger movements	8 655.5	8 695.4	0.5
Total domestic charter aircraft movements	147.6	148.2	0.4
Perth airport charter passenger movements	3 178.9	3 107.8	-2.2
Perth airport charter aircraft movements	47.5	45.0	-5.3

Note: Helicopter, joyflights and sightseeing charter flights not included.

Charter passenger and aircraft movement numbers are the sum of arrivals and departures at each airport.



DEFINITIONS

Aircraft Trips	The number of flight stages. A return flight counts as two aircraft trips.
Airport Movements	Airport movements (passenger and cargo) are measured once on arrival and once on departure. Each domestic trip generates two movements at airports. For example, a trip from Melbourne to Sydney will be counted twice, as a departure at Melbourne and as an arrival at Sydney. At the national level, the sum of all domestic airport traffic will therefore be equal to twice the number of trips undertaken.
Available Seat Kilometres (ASKs)	Calculated by multiplying the number of seats available on each flight stage, by the distance in kilometres between the ports. The distances used are Great Circle Distances.
City-Pair	The ports shown make up the city-pair route. Passenger movements shown for a city pair reflect total traffic in both directions.
Flight Stage	The operation of an aircraft from take-off to landing.
Load Factor	The total revenue passenger kilometres performed as a percentage of the total available seat kilometres.
Passengers Carried	Revenue passengers carried.
Regular Public Transport Services (RPT)	All air service operations in which aircraft are available for the transport of members of the public and are conducted in accordance with fixed schedules. It does not include charter or other non-scheduled operations.
Revenue Passengers	All passengers paying any fare. Frequent flyer redemption travellers are regarded as revenue passengers.
Revenue Passenger Kilometres (RPKs)	Calculated by multiplying the number of revenue passengers travelling on each flight stage, by the distance in kilometres between the ports. The distances used are Great Circle Distances.
Traffic on board by stages	The total of all traffic (revenue passengers) on each flight stage between two directly connected airports.
..	Not available for confidentiality or other reasons.
NA	Not applicable.