



Australian Government

Department of Infrastructure, Transport,
Regional Development, Communications, Sport and the Arts

Bureau of Infrastructure and Transport Research Economics
STATISTICAL REPORT



Aviation

**Domestic aviation activity
2024-25**

The Department of Infrastructure, Transport, Regional Development, Communications, Sport and the Arts acknowledges the Traditional Custodians of Country of the land on which we work and live.

We recognise and respect the continuing connections to land, waters and communities.

We pay our respects to them and their cultures and to their Elders both past and present and to all Aboriginal and Torres Strait Islander people.

© Commonwealth of Australia 2025

ISSN: 1832 – 1968

BITRE Reference: 2025-113

Ownership of intellectual property rights in this publication

Unless otherwise noted, copyright (and any other intellectual property rights, if any) in this publication is owned by the Commonwealth of Australia (referred to below as the Commonwealth).

Disclaimer

The material contained in this publication is made available on the understanding that the Commonwealth is not providing professional advice, and that users exercise their own skill and care with respect to its use, and seek independent advice if necessary.

The Commonwealth makes no representations or warranties as to the contents or accuracy of the information contained in this publication. To the extent permitted by law, the Commonwealth disclaims liability to any person or organisation in respect of anything done, or omitted to be done, in reliance upon information contained in this publication.

Creative Commons licence

With the exception of (a) the Coat of Arms; and (b) the Department of Infrastructure, Transport, Regional Development, Communications, Sport and the Arts' photos and graphics, copyright in this publication is licensed under a Creative Commons Attribution 3.0 Australia Licence.

Creative Commons Attribution 3.0 Australia Licence is a standard form licence agreement that allows you to copy, communicate and adapt this publication provided that you attribute the work to the Commonwealth and abide by the other licence terms. A summary of the licence terms is available from <http://creativecommons.org/licenses/by/3.0/au/deed.en>.

The full licence terms are available from <http://creativecommons.org/licenses/by/3.0/au/legalcode>.

Use of the Coat of Arms

The Department of the Prime Minister and Cabinet sets the terms under which the Coat of Arms is used. Please refer to the Department's Commonwealth Coat of Arms and Government branding web page <http://www.dpmc.gov.au/guidelines/index.cfm#brand> and, in particular, the Guidelines on the use of the Commonwealth Coat of Arms publication.

An appropriate citation for this report is:

Bureau of Infrastructure and Transport Research Economics (BITRE), 2025, Domestic aviation activity, Statistical Report, BITRE, Canberra ACT.

Contact us

This publication is available in PDF format. All other rights are reserved, including in relation to any Departmental logos or trademarks which may exist. For enquiries regarding the licence and any use of this publication, please contact:

Bureau of Infrastructure and Transport Research Economics (BITRE)
Department of Infrastructure, Transport, Regional Development, Communications, Sport and the Arts
GPO Box 501, Canberra ACT 2601, Australia

Email: avstats@infrastructure.gov.au
Website: www.bitre.gov.au/statistics/aviation

Enquiries: Nebojsa.Pavlovic@infrastructure.gov.au (02) 6136 8282

FOREWORD

This report provides an overview of domestic (including charter) commercial aviation activity in Australia for the year ending June 2025.

The data covers revenue passengers carried by Australian-registered operators of scheduled regular public transport services over Australian flight stages and fixed-wing charter operators. These estimates include passengers carried between domestic airports on international flights operated by these carriers. The passengers carried refer to traffic on board by stages.

Estimates of passengers and aircraft movements for charter aviation are included in this publication, where BITRE confidentiality standards are met.

Individual routes shown are restricted to those with an average exceeding 8,000 passengers per month over the previous six months where two or more airlines operate in competition. In November 2021 the major airlines (Qantas Group, Virgin Australia and Rex Airlines) agreed to publication of the top 35 routes based on pre-COVID activity (December 2019) whether or not they were meeting the above criteria. From January 2023, the passenger load and dual competition requirements were reinstated due to the continued recovery of passenger numbers.

Information on both the total network and the Regular Public Transport (RPT) network for the year ending June 2025 is presented on page 2.

Detailed information on the 62 individual routes can be found in the RPT summary pages on pages 3-10.

The top ten airports in terms of RPT passenger movements are shown on page 11.

Data on domestic RPT cargo movements at the top five cargo airports are provided on page 12. The table includes cargo carried on passenger flights operated by the Qantas group (including Jetstar), Virgin Australia, Air North and Skippers as well as the cargo carried by dedicated freighter aircraft operated by Qantas Freight and Team Global Express (formerly Toll Priority).

The long-term trends for the top twenty competitive RPT routes are presented graphically on pages 13–22.

Domestic RPT passenger movements at the top 50 regional airports are presented on page 23

Tables providing estimates of domestic charter aviation activity are shown on page 24. BITRE confidentiality standards restrict publication of detailed airport-level estimates for any Australian airport, with the exception of Perth Airport.

A list of definitions can be found on page 25.

This report was prepared by the Aviation Statistics Section of the Bureau of Infrastructure and Transport Research Economics with data provided by airlines.

Estimates are included where data were not available and data presented in this publication may contain revisions to previously published data.

Where figures have been rounded, discrepancies may occur between sums of component items and totals, and in percentage changes which are derived from figures prior to rounding.

CONTENTS

Highlights	1
RPT network.....	2
Top competitive routes.....	3
Top ten airports – passenger movements	11
Top five airports – cargo movements.....	12
Top twenty routes	13
1. Melbourne – Sydney	13
2. Brisbane – Sydney.....	13
3. Brisbane – Melbourne	14
4. Gold Coast – Sydney.....	14
5. Adelaide – Melbourne.....	15
6. Gold Coast – Melbourne.....	15
7. Melbourne – Perth	16
8. Adelaide – Sydney.....	16
9. Perth – Sydney	17
10. Hobart – Melbourne	17
11. Brisbane – Cairns	18
12. Brisbane – Perth.....	18
13. Canberra – Melbourne.....	19
14. Brisbane – Townsville	19
15. Cairns – Sydney	20
16. Launceston – Melbourne	20
17. Adelaide – Brisbane.....	21
18. Cairns – Melbourne	21
19. Hobart – Sydney.....	22
20. Brisbane – Mackay	22
Top fifty regional airports.....	23
Domestic charter activity.....	24
Definitions	25

This page is intentionally left blank.

HIGHLIGHTS

There were 63.77 million passengers carried on Australian domestic commercial aviation (including charter operations) in the year ending June 2025, an increase of 1.4% compared with the year ending June 2024. This is also 0.4% higher compared with pre-COVID year ending June 2019.

59.50 million passengers were carried on RPT flights in the year ending June 2025, an increase of 1.5% compared with the year ending June 2024.

In the year ending June 2025 there were 601.6 thousand RPT aircraft trips compared to 617.4 thousand in the previous year, a decrease of 2.6%.

RPT revenue passenger kilometres (RPKs) performed were 71.66 billion, an increase of 2.4% compared with the year ending June 2024.

Capacity, measured by available seat kilometres (ASKs), decreased by 0.6% compared with the year ending June 2024, to a total of 86.41 billion.

The industry wide load factor (RPKs/ASKs) increased from 80.5% in the year ending June 2024 to 82.9% in the year ending June 2025. The highest load factor (90.1%) was recorded on the Brisbane – Hobart route while the lowest load factor (54.4%) was recorded on the Geraldton – Perth route.

For the year ending June 2025, Melbourne – Sydney remained Australia's busiest RPT route with 8.06 million passengers, an increase of 1.7% compared with the previous calendar year. It was followed by Brisbane – Sydney with 4.36 million passengers (up 0.8%) and Brisbane – Melbourne with 3.55 million passengers (up 4.8%).

In the year ending June 2025, Sydney was Australia's busiest domestic airport with 25.19 million passenger movements, up 1.7% compared with the year ending June 2024, followed by Melbourne with 24.11 million passenger movements (up 0.2%) and Brisbane with 17.33 million passenger movements (up 4.0%).

Total cargo movements at Australian airports on domestic RPT flights were 320.9 thousand tonnes in the year ending June 2025, a decrease of 1.2% compared to the year ending June 2024.

In the year ending June 2025, the number of domestic aviation passengers travelling through regional airports was 25.19 million, up 1.5% compared to the year ending June 2024. Out of the top 50 regional airports, the strongest increase was recorded at Busselton airport (up 45.3%) while the largest decrease was recorded at Albury airport (down 19.3%).

Fixed-wing charter operators carried 4.26 million passengers in the year ending June 2025, an increase of 0.5% compared with the year ending June 2024. Perth airport accounted for 36.0% of all charter passengers in Australia.

TOTAL NETWORK

Summary of annual commercial aviation activity

	YE Jun 2024	YE Jun 2025	% Change
Total passengers carried (millions)	62.87	63.77	1.4
Aircraft trips (000s)	689.8	674.7	-2.2

Note: Regular Public Transport and charter aviation activity, Helicopter, joyflights and sightseeing charter flights not included.

RPT NETWORK

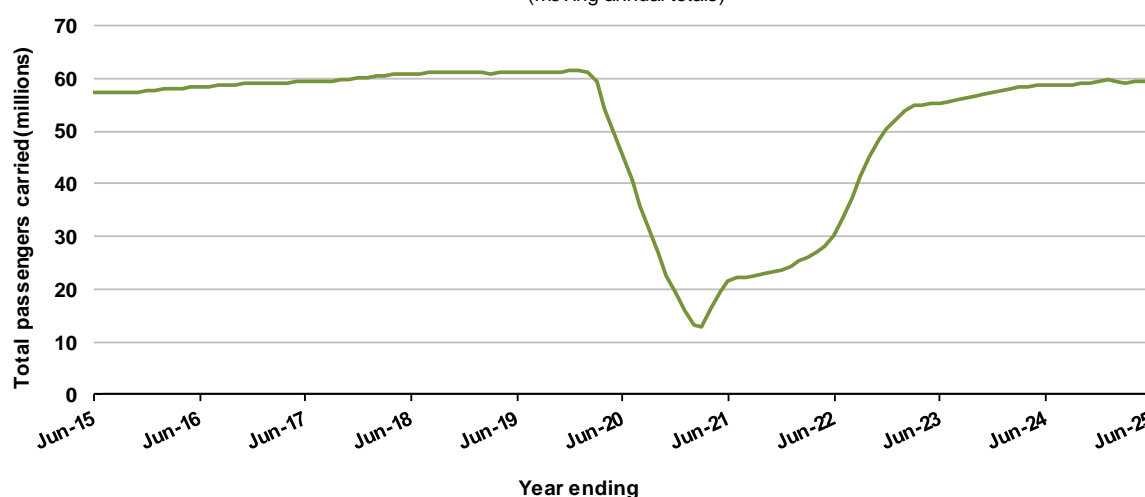
Summary of annual RPT activity

	YE Jun 2024	YE Jun 2025	% Change
Total passengers carried (millions)	58.63	59.50	1.5
Revenue passenger kilometres (billions)	69.98	71.66	2.4
Available seats (millions)	74.73	73.40	-1.8
Available seat kilometres (billions)	86.91	86.41	-0.6
Load factor %	80.5	82.9	2.4 *
Aircraft trips (000s)	617.4	601.6	-2.6

* percentage point difference

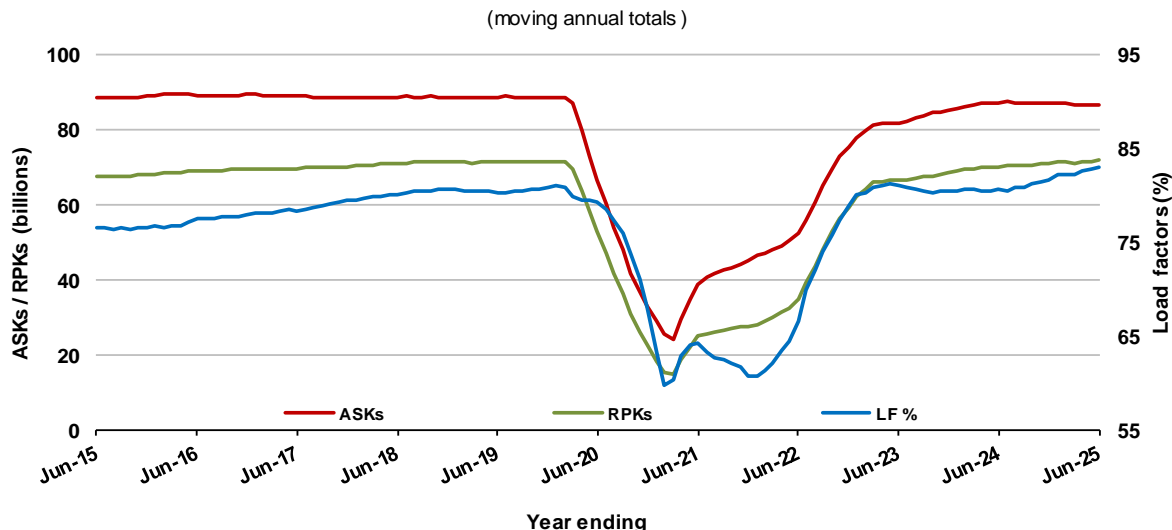
Domestic RPT passenger traffic

(moving annual totals)



RPT Network utilisation

(moving annual totals)



TOP COMPETITIVE ROUTES

Table 1: Passengers carried (000s) — annual activity

	City-Pair	YE Jun 2024	YE Jun 2025	% Change
1	Melbourne - Sydney	7,920.0	8,055.8	1.7
2	Brisbane - Sydney	4,325.1	4,358.8	0.8
3	Brisbane - Melbourne	3,389.9	3,553.0	4.8
4	Gold Coast - Sydney	2,518.6	2,465.8	-2.1
5	Adelaide - Melbourne	2,332.0	2,323.7	-0.4
6	Gold Coast - Melbourne	2,236.2	2,106.6	-5.8
7	Melbourne - Perth	1,976.9	2,066.2	4.5
8	Adelaide - Sydney	1,844.0	1,890.1	2.5
9	Perth - Sydney	1,610.6	1,717.9	6.7
10	Hobart - Melbourne	1,337.2	1,423.3	6.4
11	Brisbane - Cairns	1,279.3	1,306.1	2.1
12	Brisbane - Perth	1,034.4	1,127.6	9.0
13	Canberra - Melbourne	1,020.1	984.7	-3.5
14	Brisbane - Townsville	888.9	964.9	8.6
15	Cairns - Sydney	910.8	917.9	0.8
16	Launceston - Melbourne	853.1	870.3	2.0
17	Adelaide - Brisbane	863.7	863.6	0.0
18	Cairns - Melbourne	821.6	856.0	4.2
19	Hobart - Sydney	765.5	830.1	8.4
20	Brisbane - Mackay	737.2	783.0	6.2
21	Sunshine Coast - Sydney	772.8	780.4	1.0
22	Melbourne - Sunshine Coast	779.3	722.3	-7.3
23	Adelaide - Perth	673.6	714.6	6.1
24	Karratha - Perth	572.9	644.3	12.5
25	Brisbane - Canberra	630.5	644.0	2.1
26	Canberra - Sydney	618.3	629.5	1.8
27	Brisbane - Rockhampton	537.2	604.5	12.5
28	Brisbane - Newcastle	499.9	517.8	3.6
29	Ballina - Sydney	517.5	505.6	-2.3
30	Perth - Port Hedland	472.6	478.6	1.3
31	Melbourne - Newcastle	440.1	466.1	5.9
32	Newman - Perth	371.6	429.1	15.5
33	Kalgoorlie - Perth	362.0	373.9	3.3
34	Broome - Perth	360.2	363.9	1.0
35	Launceston - Sydney	339.5	347.8	2.5
36	Brisbane - Darwin	315.7	345.0	9.3
37	Brisbane - Hobart	292.7	315.1	7.7
38	Darwin - Melbourne	284.7	294.5	3.5
39	Brisbane - Proserpine	270.8	288.1	6.4
40	Adelaide - Gold Coast	272.7	280.9	3.0
41	Hamilton Island - Sydney	240.9	252.4	4.8
42	Brisbane - Gladstone	219.6	221.4	0.8
43	Coffs Harbour - Sydney	208.6	205.0	-1.7
44	Adelaide - Canberra	187.4	193.0	3.0
45	Darwin - Perth	173.9	188.9	8.6
46	Brisbane - Emerald	184.5	188.7	2.3
47	Canberra - Gold Coast	185.7	172.6	-7.0
48	Dubbo - Sydney	177.9	170.6	-4.1
49	Adelaide - Port Lincoln	171.7	167.1	-2.7
50	Port Macquarie - Sydney	167.4	164.4	-1.8

(continued)

Table 1: (continued) Passengers carried (000s) — annual activity

	City-Pair	YE Jun 2024	YE Jun 2025	% Change
51	Sydney - Wagga Wagga	157.1	163.1	3.8
52	Brisbane - Hamilton Island	162.4	161.5	-0.6
53	Albury - Sydney	165.1	156.4	-5.2
54	Brisbane - Launceston	148.7	154.6	4.0
55	Brisbane - Mount Isa	143.0	152.5	6.6
56	Melbourne - Mildura	174.3	151.0	-13.4
57	Brisbane - Bundaberg	136.1	140.6	3.3
58	Devonport - Melbourne	121.5	135.8	11.7
59	Geraldton - Perth	104.7	119.5	14.2
60	Ayers Rock - Melbourne	..	116.2	NA (a)
61	Brisbane - Moranbah	111.0	107.5	-3.2
62	Adelaide - Alice Springs	113.0	105.3	-6.8
Total domestic network		58,628.0	59,504.1	1.5

.. Data not available for release.

(a) Ayers Rock - Melbourne route included from October 2024, prior data not shown.

Table 2: Available seats (000s) — annual activity

	City-Pair	YE Jun 2024	YE Jun 2025	% Change
1	Melbourne - Sydney	9,641.6	9,403.0	-2.5
2	Brisbane - Sydney	5,277.3	5,035.5	-4.6
3	Brisbane - Melbourne	4,111.7	4,126.5	0.4
4	Gold Coast - Sydney	2,947.4	2,805.2	-4.8
5	Adelaide - Melbourne	2,825.6	2,722.0	-3.7
6	Gold Coast - Melbourne	2,533.5	2,368.2	-6.5
7	Melbourne - Perth	2,380.3	2,395.3	0.6
8	Adelaide - Sydney	2,302.4	2,284.8	-0.8
9	Perth - Sydney	1,885.0	1,990.5	5.6
10	Hobart - Melbourne	1,653.7	1,636.7	-1.0
11	Brisbane - Cairns	1,513.0	1,487.5	-1.7
12	Brisbane - Perth	1,222.1	1,323.4	8.3
13	Canberra - Melbourne	1,416.0	1,274.5	-10.0
14	Brisbane - Townsville	1,093.4	1,151.7	5.3
15	Cairns - Sydney	1,060.2	1,039.4	-2.0
16	Launceston - Melbourne	1,087.0	1,020.7	-6.1
17	Adelaide - Brisbane	1,087.7	1,014.6	-6.7
18	Cairns - Melbourne	950.2	985.8	3.7
19	Hobart - Sydney	955.7	985.0	3.1
20	Brisbane - Mackay	940.4	989.2	5.2
21	Sunshine Coast - Sydney	938.2	918.8	-2.1
22	Melbourne - Sunshine Coast	902.5	819.7	-9.2
23	Adelaide - Perth	826.9	870.6	5.3
24	Karratha - Perth	833.6	924.3	10.9
25	Brisbane - Canberra	851.9	833.8	-2.1
26	Canberra - Sydney	963.9	976.6	1.3
27	Brisbane - Rockhampton	686.5	742.7	8.2
28	Brisbane - Newcastle	641.8	613.5	-4.4
29	Ballina - Sydney	628.1	581.5	-7.4
30	Perth - Port Hedland	740.3	742.4	0.3
31	Melbourne - Newcastle	554.7	547.7	-1.3
32	Newman - Perth	641.9	679.8	5.9
33	Kalgoorlie - Perth	618.9	674.0	8.9
34	Broome - Perth	474.1	477.2	0.7
35	Launceston - Sydney	416.8	394.0	-5.5
36	Brisbane - Darwin	379.9	407.1	7.2
37	Brisbane - Hobart	348.8	349.7	0.3
38	Darwin - Melbourne	340.9	361.9	6.2
39	Brisbane - Proserpine	324.5	322.6	-0.6
40	Adelaide - Gold Coast	309.5	312.8	1.1
41	Hamilton Island - Sydney	331.2	316.0	-4.6
42	Brisbane - Gladstone	334.5	333.4	-0.3
43	Coffs Harbour - Sydney	270.9	276.7	2.1
44	Adelaide - Canberra	275.9	268.9	-2.5
45	Darwin - Perth	238.5	252.9	6.0
46	Brisbane - Emerald	267.8	297.7	11.2
47	Canberra - Gold Coast	217.3	193.6	-10.9
48	Dubbo - Sydney	279.9	269.6	-3.7
49	Adelaide - Port Lincoln	269.8	265.4	-1.6
50	Port Macquarie - Sydney	247.3	227.4	-8.0

(continued)

Table 2: (continued) Available seats (000s) — annual activity

	City-Pair	YE Jun 2024	YE Jun 2025	% Change
51	Sydney - Wagga Wagga	248.8	245.8	-1.2
52	Brisbane - Hamilton Island	231.4	204.7	-11.6
53	Albury - Sydney	238.6	217.8	-8.7
54	Brisbane - Launceston	179.2	173.0	-3.4
55	Brisbane - Mount Isa	235.7	230.7	-2.1
56	Melbourne - Mildura	240.5	208.4	-13.4
57	Brisbane - Bundaberg	212.1	216.9	2.3
58	Devonport - Melbourne	171.0	185.9	8.7
59	Geraldton - Perth	218.4	219.5	0.5
60	Ayers Rock - Melbourne	..	147.1	NA (a)
61	Brisbane - Moranbah	197.0	195.3	-0.9
62	Adelaide - Alice Springs	163.8	152.0	-7.2
Total domestic network		74,730.0	73,399.4	-1.8

.. Data not available for release.

(a) Ayers Rock - Melbourne route included from October 2024, prior data not shown.

Table 3: Load factors (%) — annual activity

	City-Pair	YE Jun 2024	YE Jun 2025	% Change
1	Melbourne - Sydney	82.2	85.7	3.5
2	Brisbane - Sydney	82.0	86.6	4.6
3	Brisbane - Melbourne	82.4	86.1	3.7
4	Gold Coast - Sydney	85.5	87.9	2.4
5	Adelaide - Melbourne	82.5	85.4	2.8
6	Gold Coast - Melbourne	88.3	89.0	0.7
7	Melbourne - Perth	83.1	86.3	3.2
8	Adelaide - Sydney	80.1	82.7	2.6
9	Perth - Sydney	85.4	86.3	0.9
10	Hobart - Melbourne	80.9	87.0	6.1
11	Brisbane - Cairns	84.6	87.8	3.2
12	Brisbane - Perth	84.6	85.2	0.6
13	Canberra - Melbourne	72.0	77.3	5.2
14	Brisbane - Townsville	81.3	83.8	2.5
15	Cairns - Sydney	85.9	88.3	2.4
16	Launceston - Melbourne	78.5	85.3	6.8
17	Adelaide - Brisbane	79.4	85.1	5.7
18	Cairns - Melbourne	86.5	86.8	0.4
19	Hobart - Sydney	80.1	84.3	4.2
20	Brisbane - Mackay	78.4	79.2	0.8
21	Sunshine Coast - Sydney	82.4	84.9	2.6
22	Melbourne - Sunshine Coast	86.5	88.1	1.6
23	Adelaide - Perth	81.5	82.1	0.6
24	Karratha - Perth	68.7	69.7	1.0
25	Brisbane - Canberra	74.0	77.2	3.2
26	Canberra - Sydney	64.1	64.5	0.3
27	Brisbane - Rockhampton	78.3	81.4	3.1
28	Brisbane - Newcastle	77.9	84.4	6.5
29	Ballina - Sydney	82.4	86.9	4.5
30	Perth - Port Hedland	63.8	64.5	0.6
31	Melbourne - Newcastle	79.3	85.1	5.8
32	Newman - Perth	57.9	63.1	5.2
33	Kalgoorlie - Perth	58.4	55.4	-3.0
34	Broome - Perth	76.0	76.3	0.3
35	Launceston - Sydney	81.5	88.3	6.8
36	Brisbane - Darwin	83.1	84.7	1.6
37	Brisbane - Hobart	83.9	90.1	6.2
38	Darwin - Melbourne	83.5	81.4	-2.1
39	Brisbane - Proserpine	83.5	89.3	5.8
40	Adelaide - Gold Coast	88.1	89.8	1.7
41	Hamilton Island - Sydney	72.7	79.9	7.1
42	Brisbane - Gladstone	65.6	66.4	0.8
43	Coffs Harbour - Sydney	77.0	74.1	-2.9
44	Adelaide - Canberra	67.9	71.8	3.9
45	Darwin - Perth	72.9	74.7	1.8
46	Brisbane - Emerald	68.9	63.4	-5.5
47	Canberra - Gold Coast	85.4	89.2	3.7
48	Dubbo - Sydney	63.6	63.3	-0.3
49	Adelaide - Port Lincoln	63.6	62.9	-0.7
50	Port Macquarie - Sydney	67.7	72.3	4.6

(continued)

Table 3: (continued) Load factors (%) — annual activity

	City-Pair	YE Jun 2024	YE Jun 2025	% Change
51	Sydney - Wagga Wagga	63.2	66.4	3.2
52	Brisbane - Hamilton Island	70.2	78.9	8.7
53	Albury - Sydney	69.2	71.8	2.6
54	Brisbane - Launceston	83.0	89.4	6.4
55	Brisbane - Mount Isa	60.7	66.1	5.4
56	Melbourne - Mildura	72.5	72.5	0.0
57	Brisbane - Bundaberg	64.2	64.8	0.6
58	Devonport - Melbourne	71.1	73.0	2.0
59	Geraldton - Perth	47.9	54.4	6.4
60	Ayers Rock - Melbourne	..	79.0	NA (a)
61	Brisbane - Moranbah	56.4	55.0	-1.3
62	Adelaide - Alice Springs	69.0	69.3	0.3
Total domestic network		80.5	82.9	2.4

.. Data not available for release.

(a) Ayers Rock - Melbourne route included from October 2024, prior data not shown.

Table 4: Aircraft trips ^(a) — annual activity

	City-Pair	YE Jun 2024	YE Jun 2025	% Change
1	Melbourne - Sydney	55,820	53,987	-3.3
2	Brisbane - Sydney	32,310	30,217	-6.5
3	Brisbane - Melbourne	24,727	24,824	0.4
4	Gold Coast - Sydney	16,733	15,930	-4.8
5	Adelaide - Melbourne	17,232	16,235	-5.8
6	Gold Coast - Melbourne	13,810	12,794	-7.4
7	Melbourne - Perth	13,207	13,326	0.9
8	Adelaide - Sydney	13,984	13,463	-3.7
9	Perth - Sydney	9,818	10,571	7.7
10	Hobart - Melbourne	9,817	9,505	-3.2
11	Brisbane - Cairns	10,284	10,531	2.4
12	Brisbane - Perth	7,084	7,582	7.0
13	Canberra - Melbourne	9,969	8,202	-17.7
14	Brisbane - Townsville	8,205	9,048	10.3
15	Cairns - Sydney	5,483	5,574	1.7
16	Launceston - Melbourne	8,800	7,518	-14.6
17	Adelaide - Brisbane	8,565	7,827	-8.6
18	Cairns - Melbourne	4,886	5,126	4.9
19	Hobart - Sydney	5,765	5,667	-1.7
20	Brisbane - Mackay	7,592	7,410	-2.4
21	Sunshine Coast - Sydney	5,234	5,109	-2.4
22	Melbourne - Sunshine Coast	4,880	4,384	-10.2
23	Adelaide - Perth	4,676	4,857	3.9
24	Karratha - Perth	5,003	5,577	11.5
25	Brisbane - Canberra	6,871	6,719	-2.2
26	Canberra - Sydney	14,883	14,451	-2.9
27	Brisbane - Rockhampton	7,950	7,976	0.3
28	Brisbane - Newcastle	5,755	5,126	-10.9
29	Ballina - Sydney	4,412	3,853	-12.7
30	Perth - Port Hedland	4,571	4,612	0.9
31	Melbourne - Newcastle	3,568	3,565	-0.1
32	Newman - Perth	3,988	4,158	4.3
33	Kalgoorlie - Perth	4,071	4,593	12.8
34	Broome - Perth	3,071	3,153	2.7
35	Launceston - Sydney	2,599	2,405	-7.5
36	Brisbane - Darwin	2,713	2,488	-8.3
37	Brisbane - Hobart	2,219	2,178	-1.8
38	Darwin - Melbourne	2,121	2,016	-5.0
39	Brisbane - Proserpine	2,151	1,983	-7.8
40	Adelaide - Gold Coast	1,602	1,579	-1.4
41	Hamilton Island - Sydney	1,876	1,791	-4.5
42	Brisbane - Gladstone	4,072	3,798	-6.7
43	Coffs Harbour - Sydney	4,808	4,341	-9.7
44	Adelaide - Canberra	2,556	2,472	-3.3
45	Darwin - Perth	1,389	1,471	5.9
46	Brisbane - Emerald	3,986	3,890	-2.4
47	Canberra - Gold Coast	1,217	1,078	-11.4
48	Dubbo - Sydney	5,264	5,102	-3.1
49	Adelaide - Port Lincoln	6,562	6,110	-6.9
50	Port Macquarie - Sydney	4,235	3,835	-9.4

(continued)

Table 4: (continued) Aircraft trips ^(a) — annual activity

	City-Pair	YE Jun 2024	YE Jun 2025	% Change
51	Sydney - Wagga Wagga	4,472	4,387	-1.9
52	Brisbane - Hamilton Island	1,472	1,491	1.3
53	Albury - Sydney	4,420	3,956	-10.5
54	Brisbane - Launceston	1,048	997	-4.9
55	Brisbane - Mount Isa	2,043	2,434	19.1
56	Melbourne - Mildura	5,033	4,461	-11.4
57	Brisbane - Bundaberg	3,435	3,526	2.6
58	Devonport - Melbourne	3,736	3,543	-5.2
59	Geraldton - Perth	2,307	2,439	5.7
60	Ayers Rock - Melbourne	..	823	NA (b)
61	Brisbane - Moranbah	2,620	2,598	-0.8
62	Adelaide - Alice Springs	1,929	1,808	-6.3
Total domestic network		617,395	601,608	-2.6

.. Data not available for release.

(a) Includes RPT Cargo flights.

(b) Ayers Rock - Melbourne route included from October 2024, prior data not shown.

TOP TEN AIRPORTS – PASSENGER MOVEMENTS

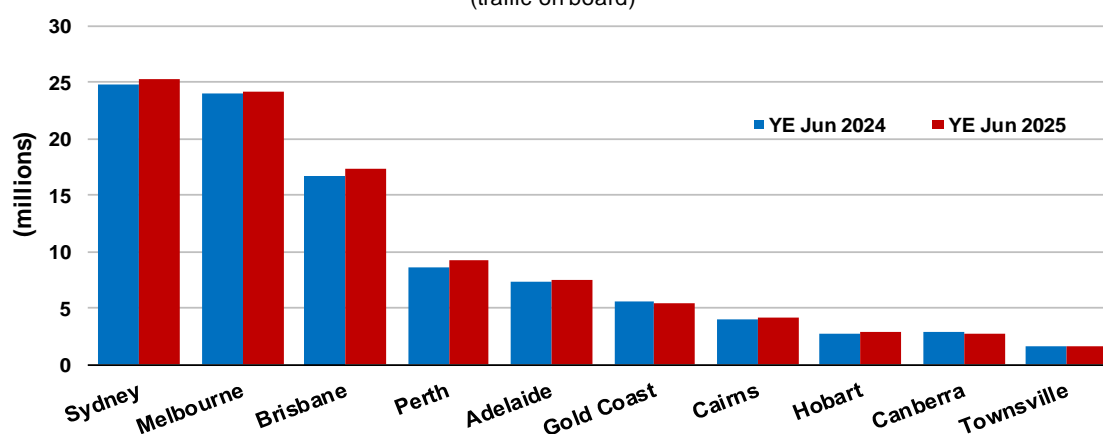
Table 5: Top ten airports, RPT passenger movements (000s) — annual activity

Airport	YE Jun 2024	YE Jun 2025	% Change	% of Total
1 Sydney	24,777.2	25,194.9	1.7	21.2
2 Melbourne	24,061.5	24,112.8	0.2	20.3
3 Brisbane	16,665.5	17,329.6	4.0	14.6
4 Perth	8,598.2	9,165.1	6.6	7.7
5 Adelaide	7,298.2	7,409.1	1.5	6.2
6 Gold Coast	5,620.4	5,374.6	-4.4	4.5
7 Cairns	4,052.6	4,121.0	1.7	3.5
8 Hobart	2,651.7	2,801.8	5.7	2.4
9 Canberra	2,795.1	2,766.5	-1.0	2.3
10 Townsville	1,671.7	1,658.3	-0.8	1.4
Total top ten airports	98,191.9	99,933.6	1.8	84.0
Total domestic network	117,256.1	119,008.3	1.5	100.0

Note: Airport passenger movement numbers are the sum of passenger arrivals and departures at each airport.

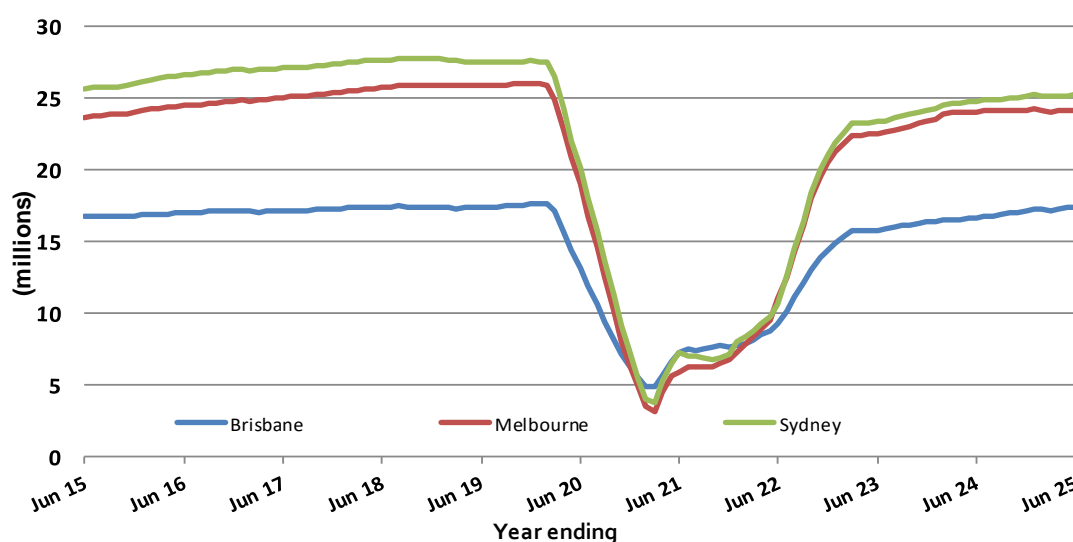
Top ten airports, RPT passenger movements

(traffic on board)



Top three airports, domestic passenger movements

(moving annual totals - traffic on board)



TOP FIVE AIRPORTS – CARGO MOVEMENTS

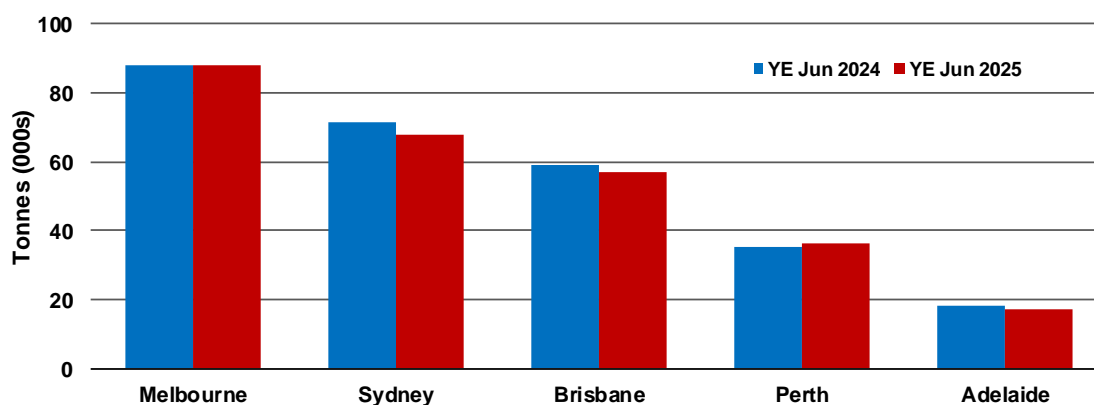
Table 6: Top five airports, domestic RPT cargo movements (000s tonnes) - annual activity

Airport	YE Jun 2024	YE Jun 2025	% Change	% of Total
1 Melbourne	88.0	88.1	0.1	27.5
2 Sydney	71.6	67.9	-5.1	21.2
3 Brisbane	59.1	57.0	-3.6	17.8
4 Perth	35.1	36.3	3.4	11.3
5 Adelaide	18.4	17.2	-6.1	5.4
Total top five airports	272.1	266.6	-2.0	83.1
Total domestic network	324.9	320.9	-1.2	100.0

Note: Airport cargo tonnes are the sum of cargo tonnes on arrivals and departures at each airport.

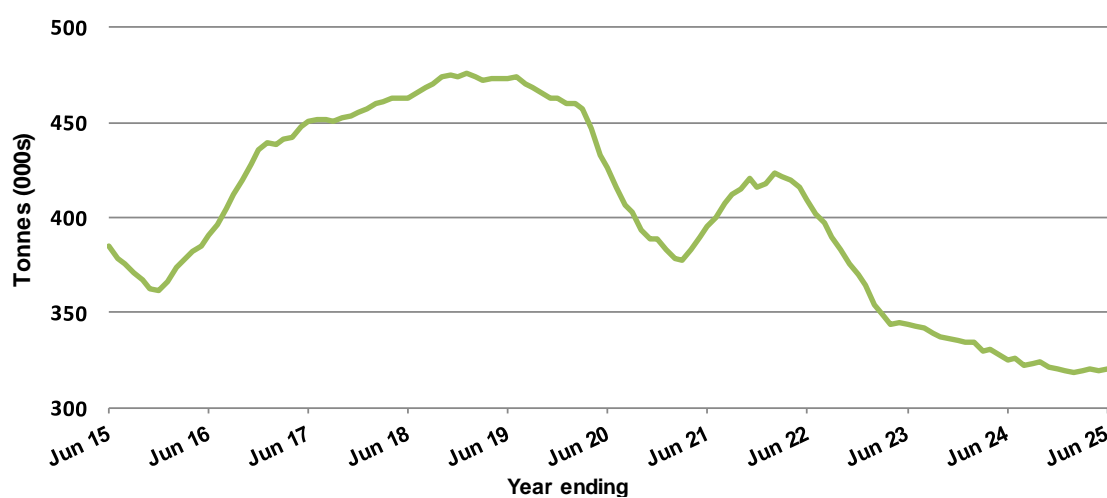
Top five airports, cargo movements

(Domestic cargo traffic - traffic on board)



Total domestic network - cargo movements

(moving annual totals - traffic on board)



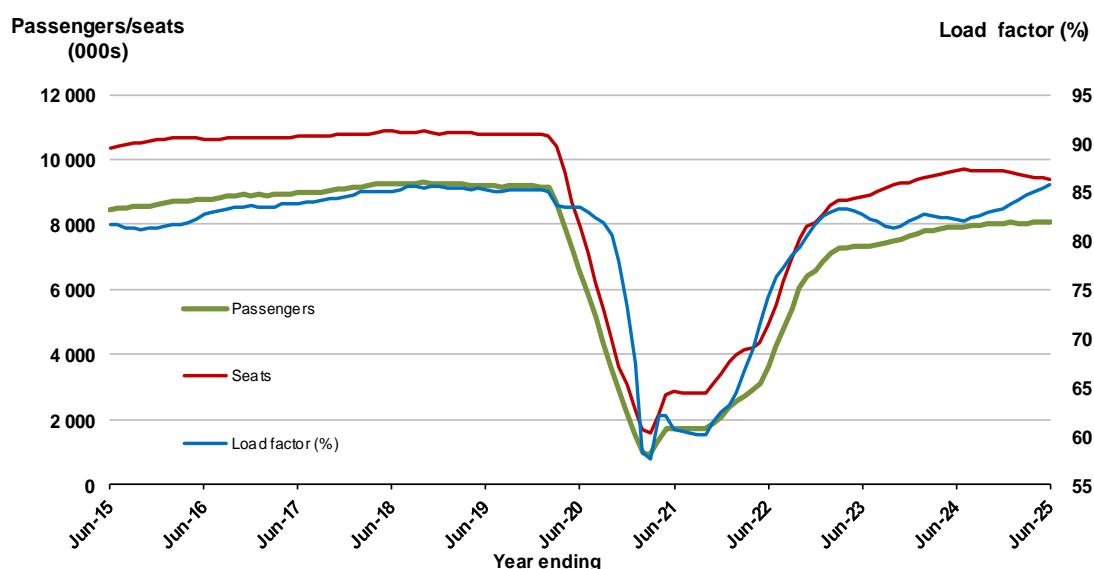
TOP TWENTY ROUTES

1. Melbourne - Sydney

Moving annual data

	YE Jun 2024	YE Jun 2025	% Change
Passengers carried (000s)	7,920.0	8,055.8	1.7
Seats (000s)	9,641.6	9,403.0	-2.5
Load factor %	82.2	85.7	3.5 *
Aircraft trips	55,820	53,987	-3.3

* percentage point difference

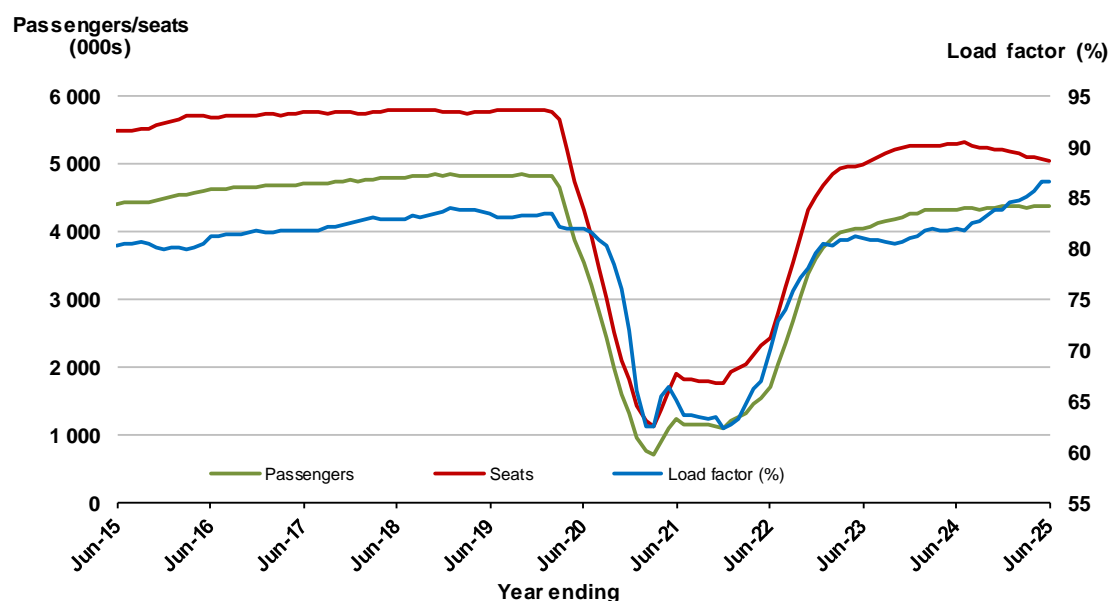


2. Brisbane - Sydney

Moving annual data

	YE Jun 2024	YE Jun 2025	% Change
Passengers carried (000s)	4,325.1	4,358.8	0.8
Seats (000s)	5,277.3	5,035.5	-4.6
Load factor %	82.0	86.6	4.6 *
Aircraft trips	32,310	30,217	-6.5

* percentage point difference

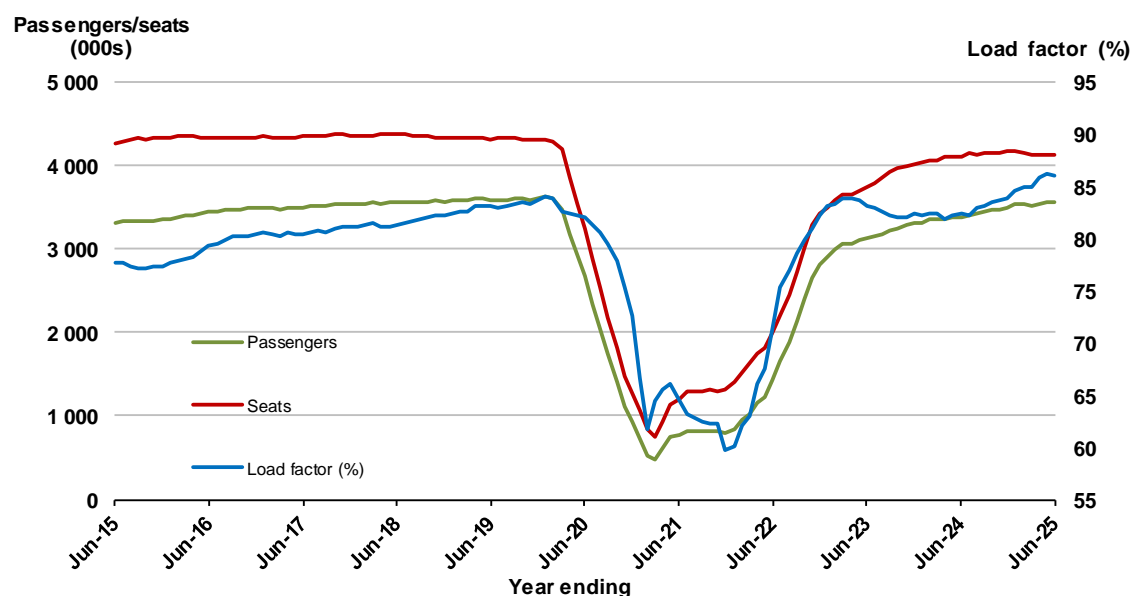


3. Brisbane - Melbourne

Moving annual data

	YE Jun 2024	YE Jun 2025	% Change
Passengers carried (000s)	3,389.9	3,553.0	4.8
Seats (000s)	4,111.7	4,126.5	0.4
Load factor %	82.4	86.1	3.7 *
Aircraft trips	24,727	24,824	0.4

* percentage point difference

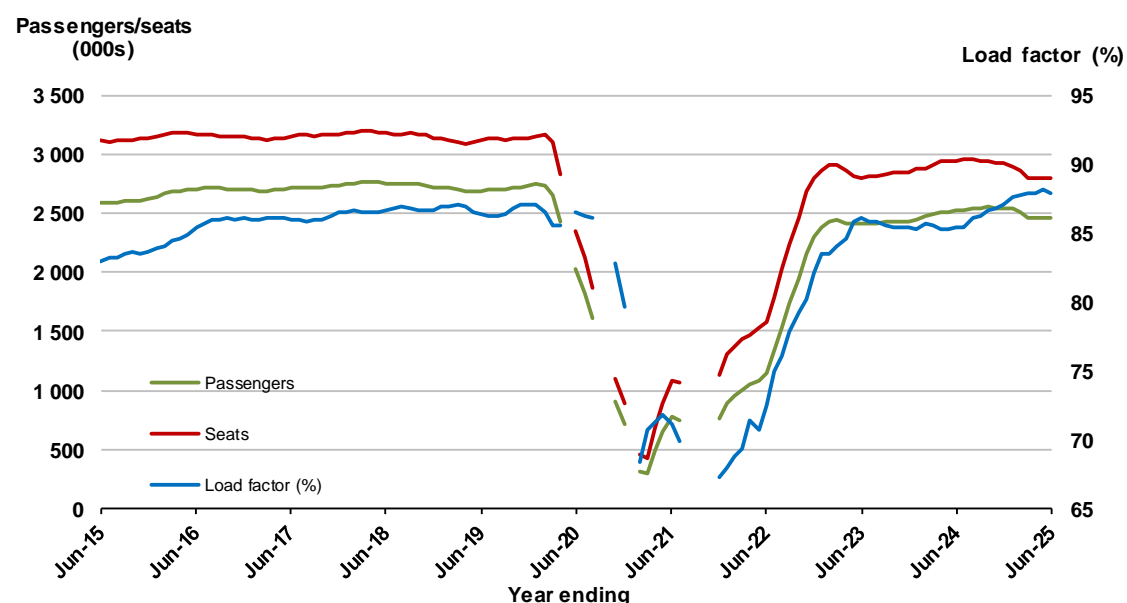


4. Gold Coast - Sydney ^(a)

Moving annual data

	YE Jun 2024	YE Jun 2025	% Change
Passengers carried (000s)	2,518.6	2,465.8	-2.1
Seats (000s)	2,947.4	2,805.2	-4.8 *
Load factor %	85.5	87.9	2.4 *
Aircraft trips	16,733	15,930	-4.8

* percentage point difference



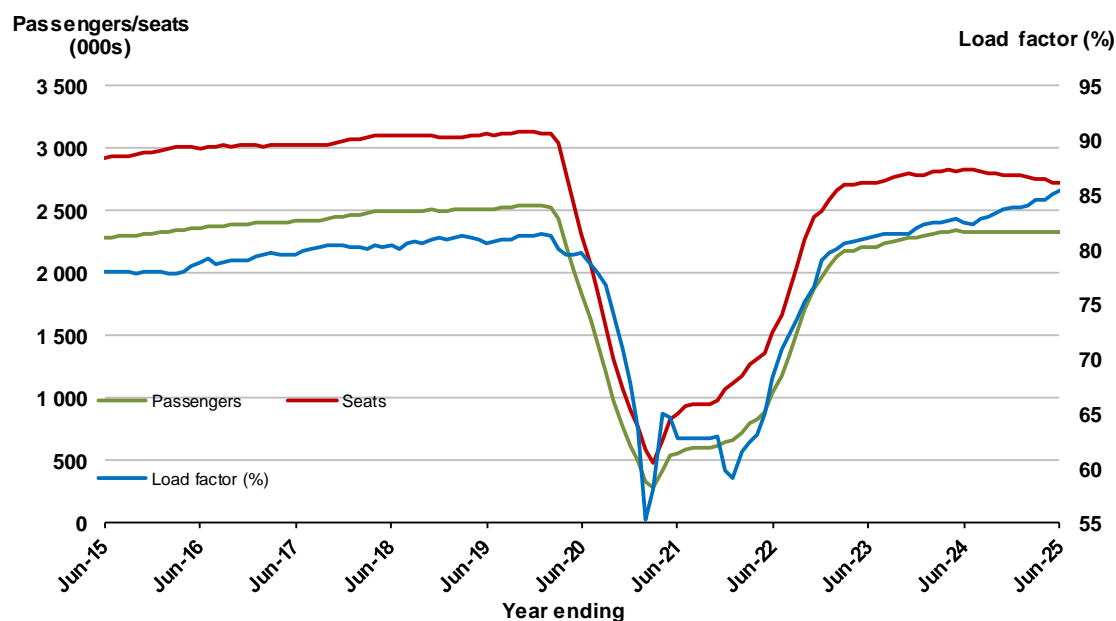
(a) May, September and October 2020 and January and August to November 2021 moving annual totals not available for release.

5. Adelaide - Melbourne

Moving annual data

	YE Jun 2024	YE Jun 2025	% Change
Passengers carried (000s)	2,332.0	2,323.7	-0.4
Seats (000s)	2,825.6	2,722.0	-3.7
Load factor %	82.5	85.4	2.8 *
Aircraft trips	17,232	16,235	-5.8

* percentage point difference

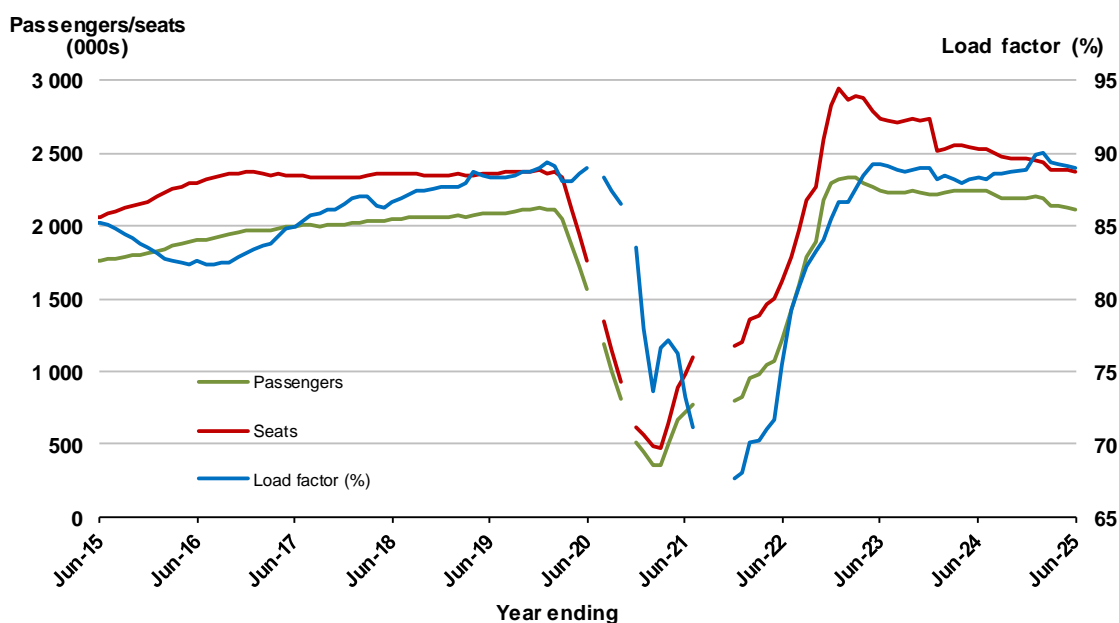


6. Gold Coast - Melbourne ^(a)

Moving annual data

	YE Jun 2024	YE Jun 2025	% Change
Passengers carried (000s)	2,236.2	2,106.6	-5.8
Seats (000s)	2,533.5	2,368.2	-6.5
Load factor %	88.3	89.0	0.7 *
Aircraft trips	13,810	12,794	-7.4

* percentage point difference



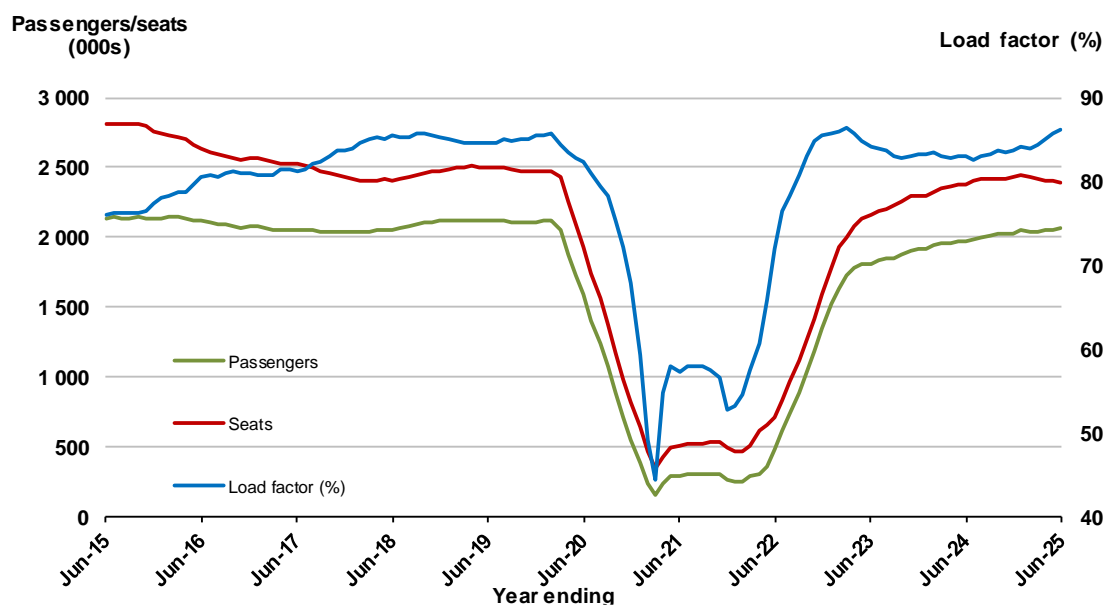
(a) April to November 2020 and August to November 2021 moving annuals are not available for release.

7. Melbourne - Perth

Moving annual data

	YE Jun 2024	YE Jun 2025	% Change
Passengers carried (000s)	1,976.9	2,066.2	4.5
Seats (000s)	2,380.3	2,395.3	0.6
Load factor %	83.1	86.3	3.2 *
Aircraft trips	13,207	13,326	0.9

* percentage point difference

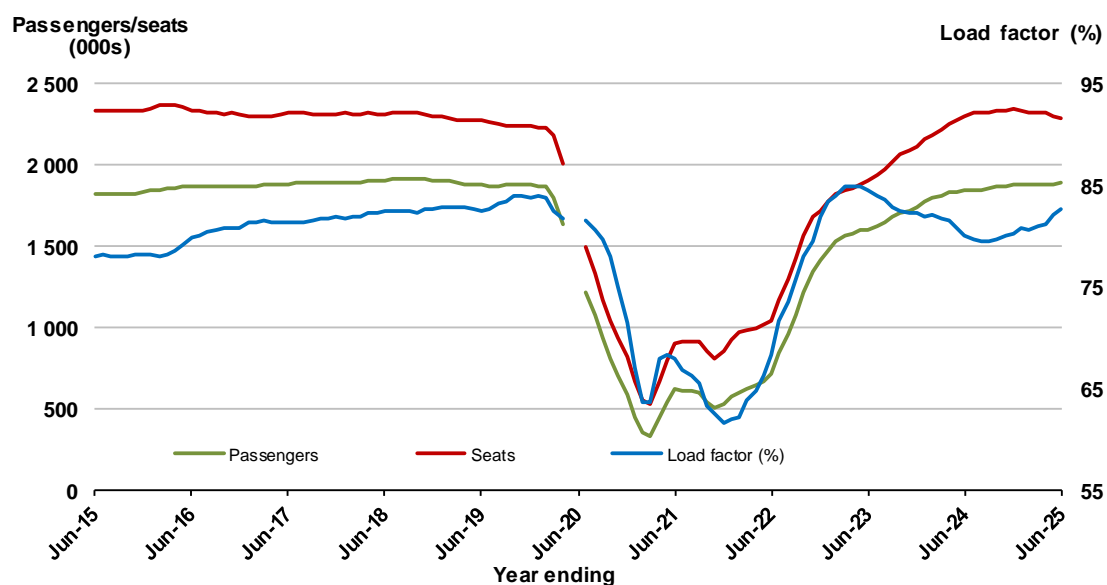


8. Adelaide - Sydney ^(a)

Moving annual data

	YE Jun 2024	YE Jun 2025	% Change
Passengers carried (000s)	1,844.0	1,890.1	2.5
Seats (000s)	2,302.4	2,284.8	-0.8
Load factor %	80.1	82.7	2.6 *
Aircraft trips	13,984	13,463	-3.7

* percentage point difference



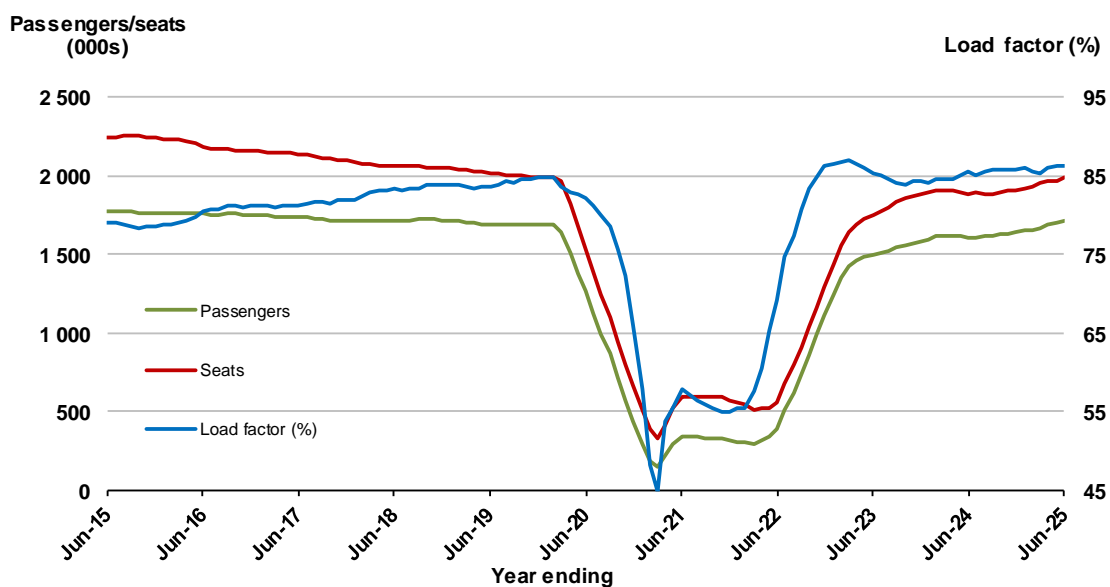
(a) May and June 2020 moving annuals are not available for release.

9. Perth - Sydney

Moving annual data

	YE Jun 2024	YE Jun 2025	% Change
Passengers carried (000s)	1,610.6	1,717.9	6.7
Seats (000s)	1,885.0	1,990.5	5.6
Load factor %	85.4	86.3	0.9 *
Aircraft trips	9,818	10,571	7.7

* percentage point difference

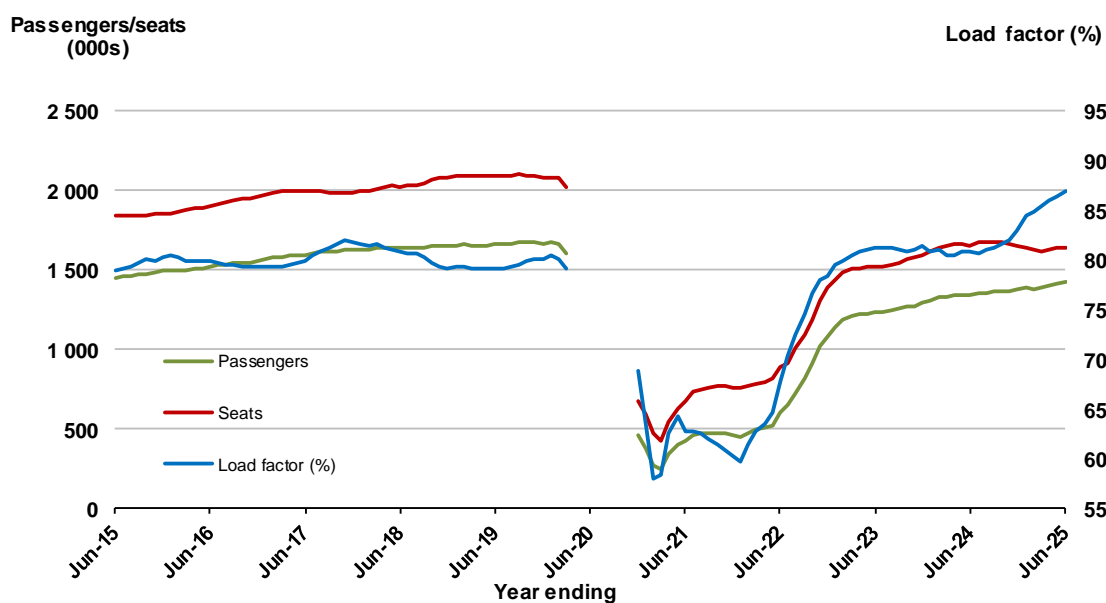


10. Hobart - Melbourne ^(a)

Moving annual data

	YE Jun 2024	YE Jun 2025	% Change
Passengers carried (000s)	1,337.2	1,423.3	6.4
Seats (000s)	1,653.7	1,636.7	-1.0
Load factor %	80.9	87.0	6.1 *
Aircraft trips	9,817	9,505	-3.2

* percentage point difference



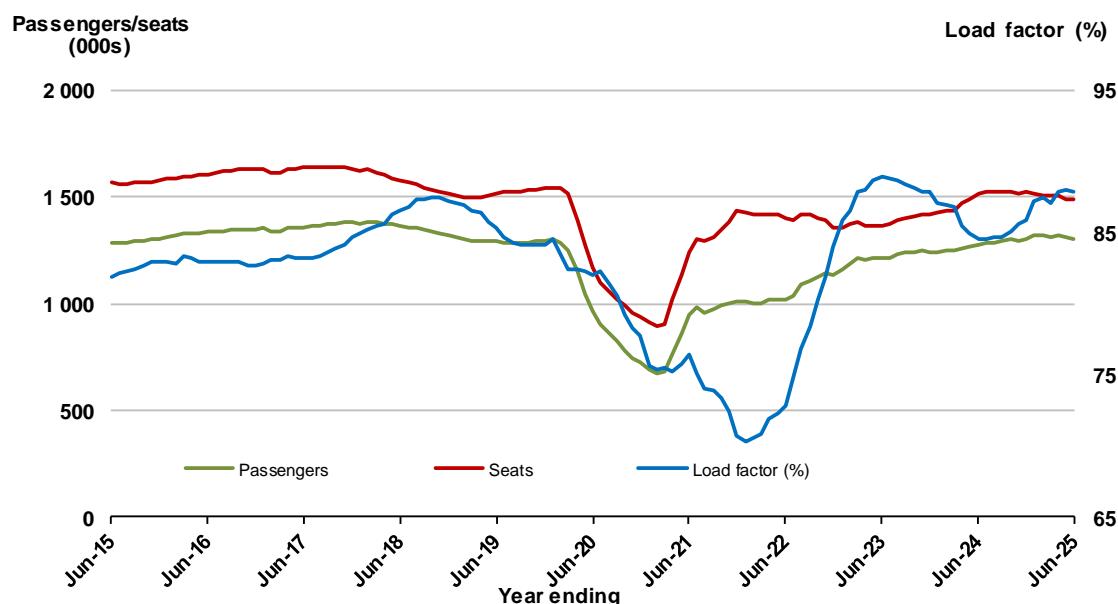
(a) April to November 2020 moving annuals are not available for release.

11. Brisbane - Cairns

Moving annual data

	YE Jun 2024	YE Jun 2025	% Change
Passengers carried (000s)	1,279.3	1,306.1	2.1
Seats (000s)	1,513.0	1,487.5	-1.7
Load factor %	84.6	87.8	3.2 *
Aircraft trips	10,284	10,531	2.4

* percentage point difference

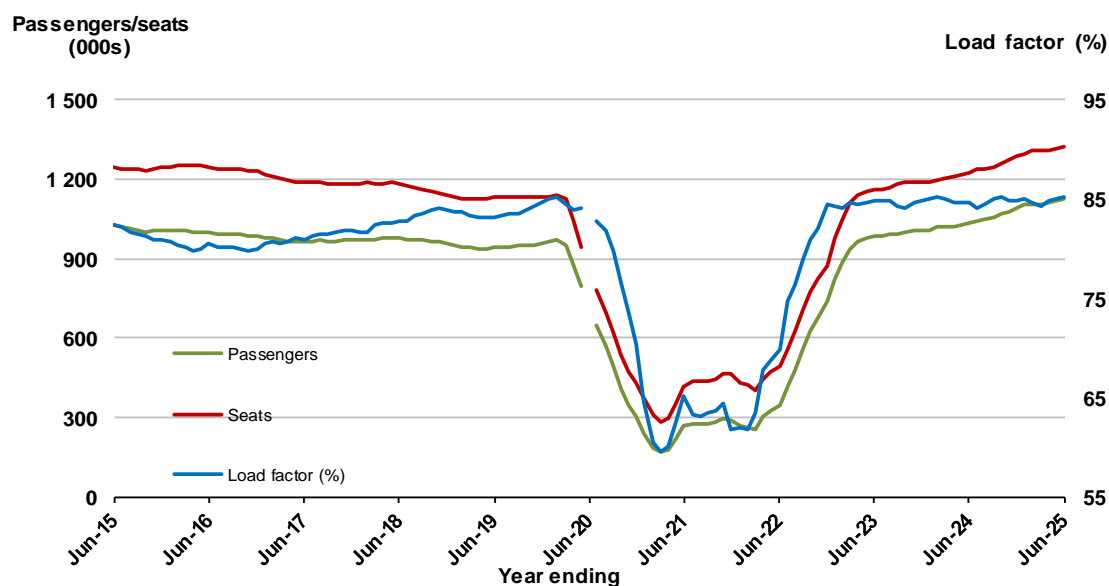


12. Brisbane - Perth (a)

Moving annual data

	YE Jun 2024	YE Jun 2025	% Change
Passengers carried (000s)	1,034.4	1,127.6	9.0
Seats (000s)	1,222.1	1,323.4	8.3
Load factor %	84.6	85.2	0.6 *
Aircraft trips	7,084	7,582	7.0

* percentage point difference



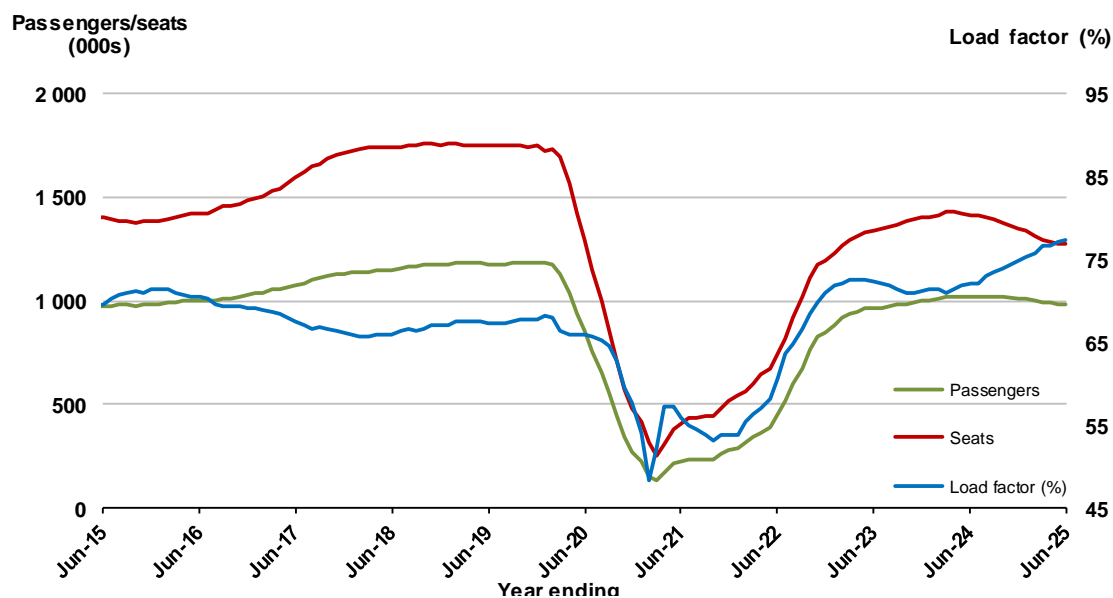
(a) June 2020 moving annuals are not available for release.

13. Canberra - Melbourne

Moving annual data

	YE Jun 2024	YE Jun 2025	% Change
Passengers carried (000s)	1,020.1	984.7	-3.5
Seats (000s)	1,416.0	1,274.5	-10.0
Load factor %	72.0	77.3	5.2 *
Aircraft trips	9,969	8,202	-17.7

* percentage point difference

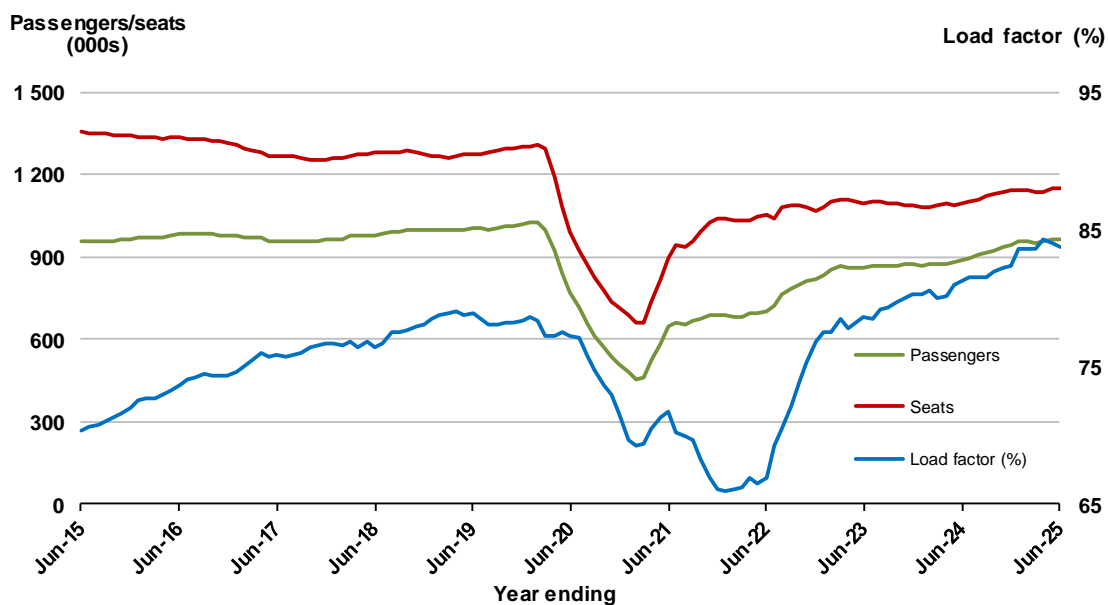


14. Brisbane - Townsville

Moving annual data

	YE Jun 2024	YE Jun 2025	% Change
Passengers carried (000s)	888.9	964.9	8.6
Seats (000s)	1,093.4	1,151.7	5.3
Load factor %	81.3	83.8	2.5 *
Aircraft trips	8,205	9,048	10.3

* percentage point difference

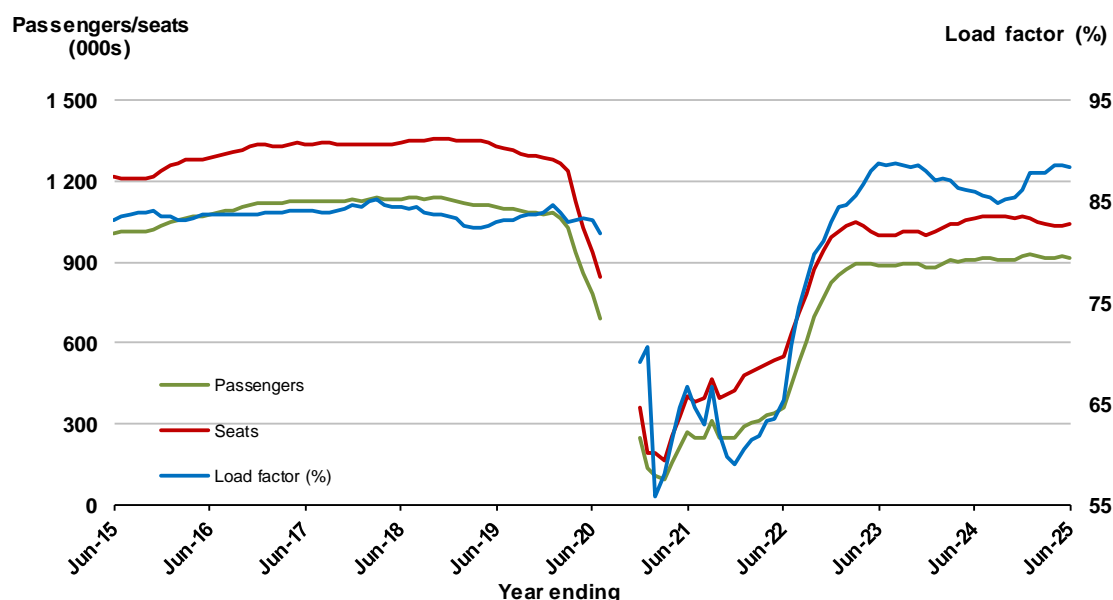


15. Cairns - Sydney ^(a)

Moving annual data

	YE Jun 2024	YE Jun 2025	% Change
Passengers carried (000s)	910.8	917.9	0.8
Seats (000s)	1,060.2	1,039.4	-2.0
Load factor %	85.9	88.3	2.4 *
Aircraft trips	5,483	5,574	1.7

* percentage point difference



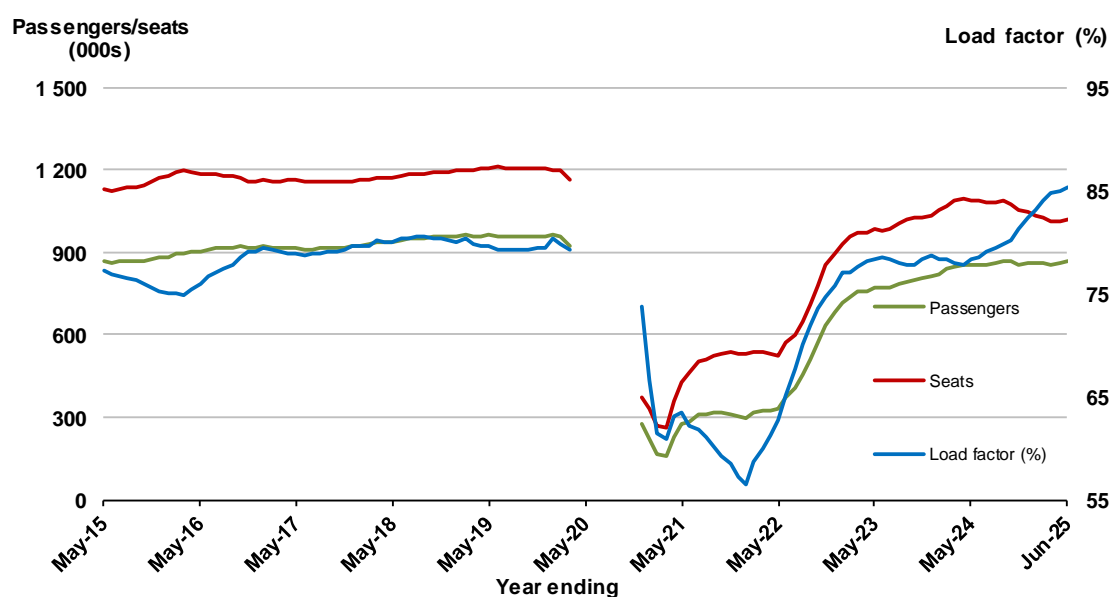
(a) August to November 2020 moving annuals are not available for release.

16. Launceston - Melbourne ^(a)

Moving annual data

	YE Jun 2024	YE Jun 2025	% Change
Passengers carried (000s)	853.1	870.3	2.0
Seats (000s)	1,087.0	1,020.7	-6.1
Load factor %	78.5	85.3	6.8 *
Aircraft trips	8,800	7,518	-14.6

* percentage point difference



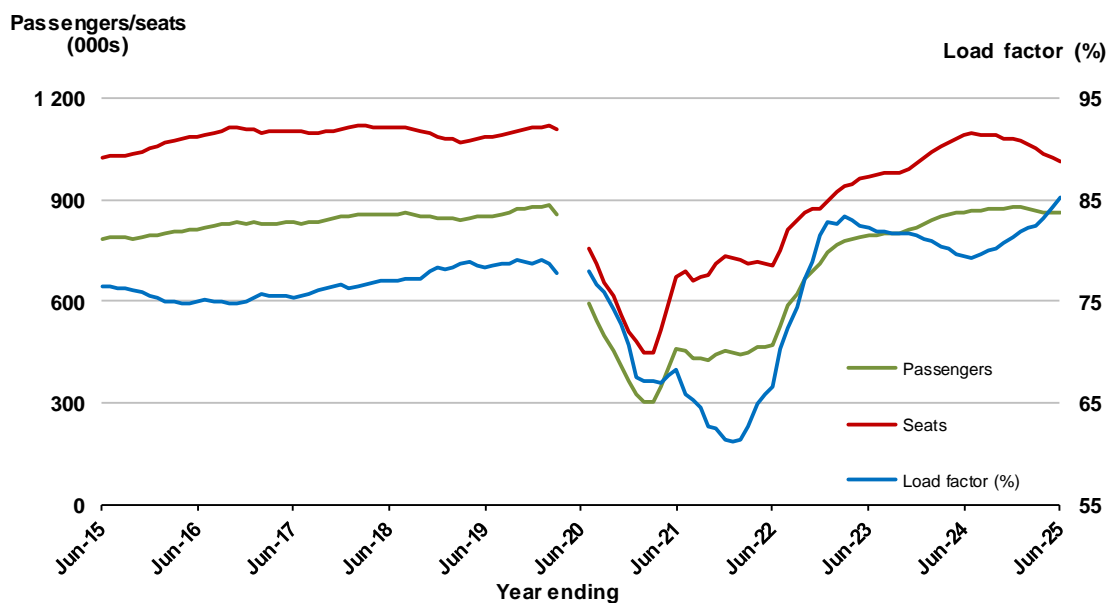
(a) April to November 2020 moving annuals are not available for release.

17. Adelaide - Brisbane ^(a)

Moving annual data

	YE Jun 2024	YE Jun 2025	% Change
Passengers carried (000s)	863.7	863.6	0.0
Seats (000s)	1,087.7	1,014.6	-6.7
Load factor %	79.4	85.1	5.7 *
Aircraft trips	8,565	7,827	-8.6

* percentage point difference



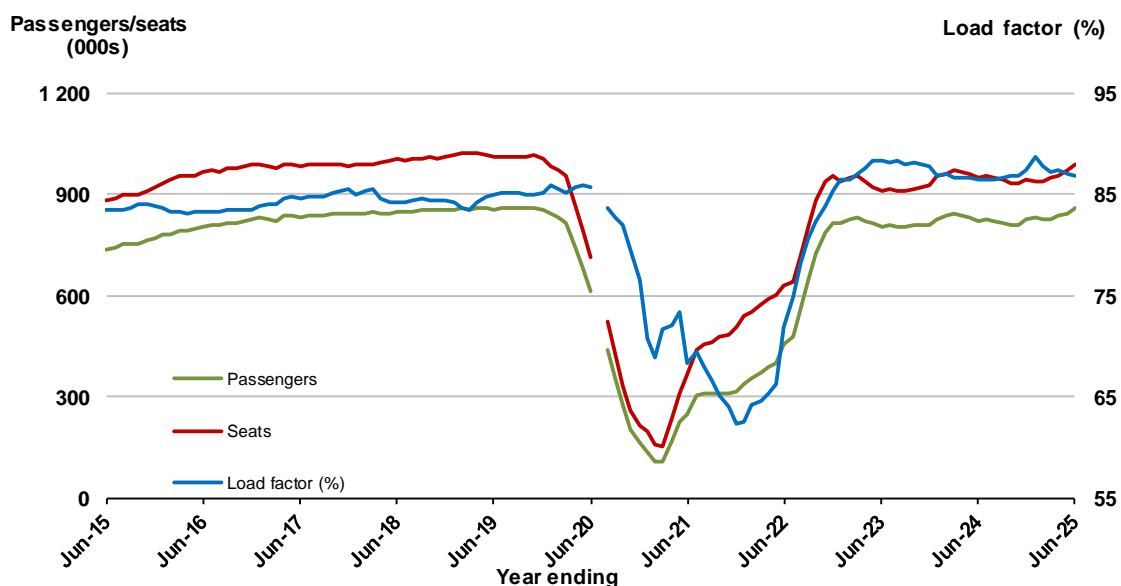
(a) April to June 2020 moving annuals are not available for release.

18. Cairns - Melbourne ^(a)

Moving annual data

	YE Jun 2024	YE Jun 2025	% Change
Passengers carried (000s)	821.6	856.0	4.2
Seats (000s)	950.2	985.8	3.7
Load factor %	86.5	86.8	0.4 *
Aircraft trips	4,886	5,126	4.9

* percentage point difference



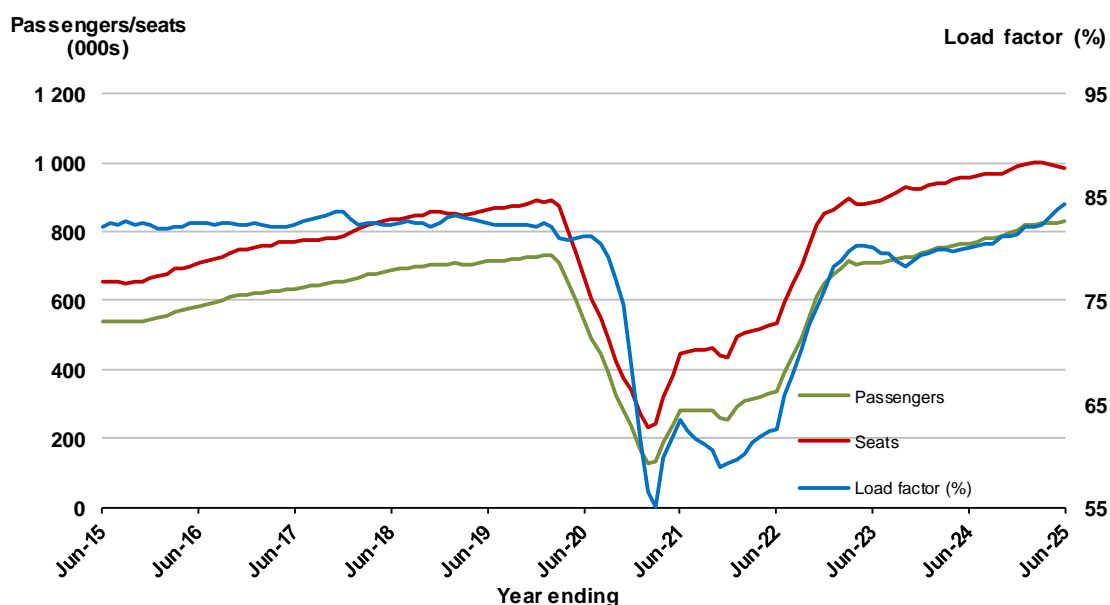
(a) July 2020 moving annuals are not available for release

19. Hobart - Sydney

Moving annual data

	YE Jun 2024	YE Jun 2025	% Change
Passengers carried (000s)	765.5	830.1	8.4
Seats (000s)	955.7	985.0	3.1
Load factor %	80.1	84.3	4.2 *
Aircraft trips	5,765	5,667	-1.7

* percentage point difference

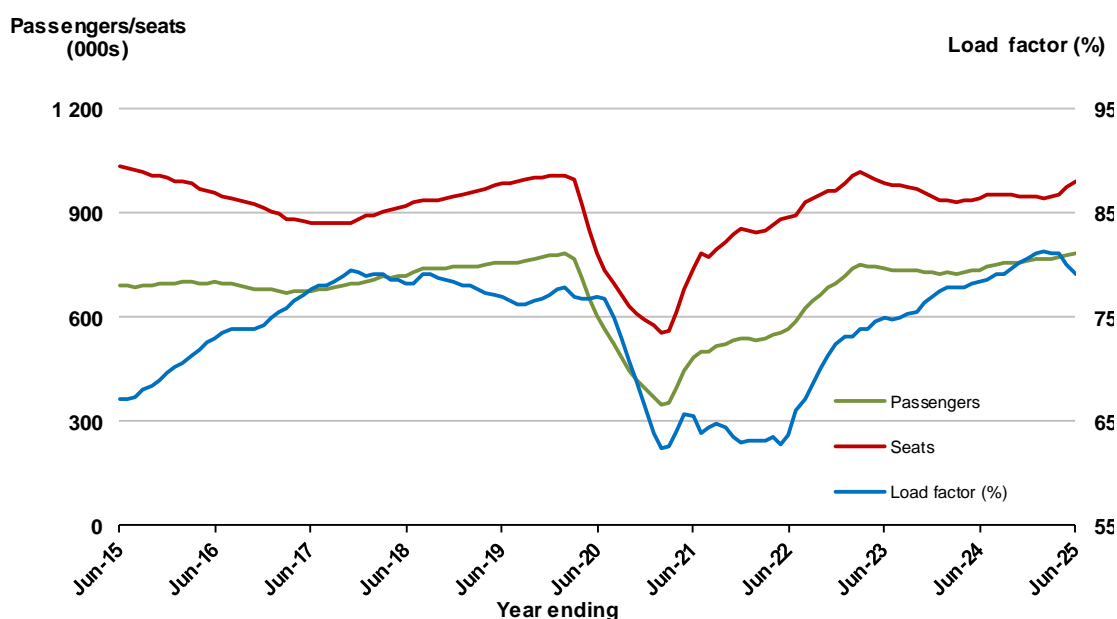


20. Brisbane - Mackay

Moving annual data

	YE Jun 2024	YE Jun 2025	% Change
Passengers carried (000s)	737.2	783.0	6.2
Seats (000s)	940.4	989.2	5.2
Load factor %	78.4	79.2	0.8 *
Aircraft trips	7,592	7,410	-2.4

* percentage point difference



TOP FIFTY REGIONAL AIRPORTS

Table 7: Top fifty regional airports (000s) — passenger movements, annual

	Airport	YE Jun 2024	YE Jun 2025	% Change
1	Cairns	4 052.6	4 121.0	1.7
2	Hobart	2 651.7	2 801.8	5.7
3	Townsville	1 671.7	1 658.3	-0.8
4	Darwin	1 593.6	1 628.0	2.2
5	Launceston	1 413.0	1 433.6	1.5
6	Newcastle	1 201.2	1 183.7	-1.5
7	Mackay	911.7	902.5	-1.0
8	Karratha	582.6	657.7	12.9
9	Rockhampton	656.2	644.7	-1.8
10	Ballina	620.3	612.1	-1.3
11	Proserpine	506.5	520.7	2.8
12	Port Hedland	485.1	491.1	1.2
13	Hamilton Island	489.7	489.1	-0.1
14	Broome	439.4	444.3	1.1
15	Newman	372.2	430.4	15.6
16	Kalgoorlie	362.4	374.4	3.3
17	Alice Springs	367.5	358.3	-2.5
18	Ayers Rock	283.6	345.2	21.8
19	Paraburdoo	263.4	275.5	4.6
20	Coffs Harbour	266.8	252.0	-5.5
21	Mount Isa	232.3	239.5	3.1
22	Albury	276.5	223.1	-19.3
23	Gladstone	240.2	221.5	-7.8
24	Wagga Wagga	201.8	213.1	5.6
25	Hervey Bay	154.7	208.2	34.5
26	Dubbo	213.7	205.2	-4.0
27	Emerald	195.9	199.9	2.0
28	Port Macquarie	228.0	190.5	-16.4
29	Mildura	231.9	189.8	-18.1
30	Port Lincoln	171.7	167.1	-2.7
31	Tamworth	173.3	160.8	-7.2
32	Bundaberg	165.3	140.8	-14.8
33	Kununurra	139.4	140.0	0.4
34	Devonport	121.7	136.0	11.8
35	Geraldton	110.2	126.3	14.6
36	Thursday Island	110.3	120.2	9.0
37	Orange	109.3	113.4	3.7
38	Learmonth	103.1	112.3	8.9
39	Moranbah	111.1	107.6	-3.2
40	Olympic Dam	103.6	101.8	-1.7
41	Armidale	107.3	101.6	-5.3
42	Weipa	90.0	96.5	7.3
43	Busseton	65.3	94.9	45.3
44	Gove	92.4	88.8	-3.8
45	Burnie	80.7	80.3	-0.5
46	Griffith	69.3	74.7	7.8
47	Mount Gambier	72.9	71.0	-2.6
48	Norfolk Island	70.0	70.0	0.0
49	Merimbula	70.2	68.4	-2.6
50	Albany	65.1	67.5	3.6
Total top 50 regional airports		23,368.0	23,755.1	1.7
Total regional airports		24,811.2	25,190.8	1.5
Total domestic network		117,256.1	119,008.3	1.5

Note: Airport passenger movement numbers are the sum of passenger arrivals and departures at each airport.

Regional airports are defined as airports which are, according to the Australian Bureau of Statistics

"The Australian Statistical Geography Standard (ASGS)", not based in Major Urban areas.

DOMESTIC CHARTER ACTIVITY

Table 8: Charter passengers carried and aircraft trips - annual activity (000s)

	YE Jun 2024	YE Jun 2025	% Change
Total domestic charter passengers	4 244.2	4 263.4	0.5
Total domestic charter aircraft trips	72.4	73.1	1.0

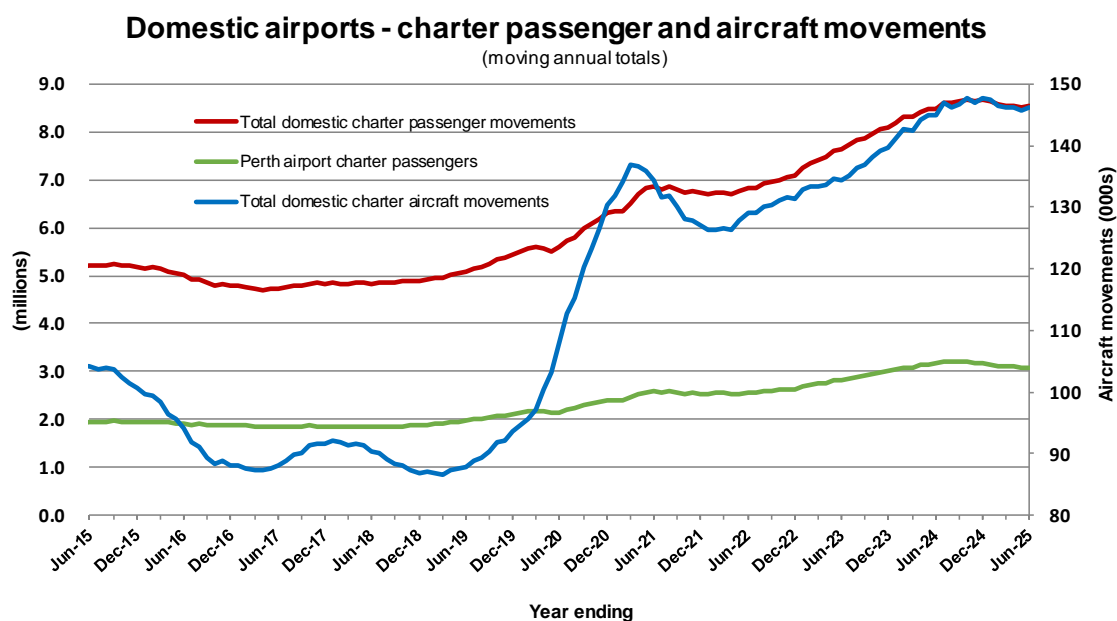
Note: Helicopter, joyflights and sightseeing charter flights not included.

Table 9: Domestic airports - charter activity - annual activity (000s)

	YE Jun 2024	YE Jun 2025	% Change
Total domestic charter passenger movements	8 488.4	8 526.7	0.5
Total domestic charter aircraft movements	144.8	146.2	1.0
Perth airport charter passenger movements	3 159.3	3 072.3	-2.8
Perth airport charter aircraft movements	48.4	45.1	-6.8

Note: Helicopter, joyflights and sightseeing charter flights not included.

Charter passenger and aircraft movement numbers are the sum of arrivals and departures at each airport.



DEFINITIONS

Aircraft Trips	The number of flight stages. A return flight counts as two aircraft trips.
Airport Movements	Airport movements (passenger and cargo) are measured once on arrival and once on departure. Each domestic trip generates two movements at airports. For example, a trip from Melbourne to Sydney will be counted twice, as a departure at Melbourne and as an arrival at Sydney. At the national level, the sum of all domestic airport traffic will therefore be equal to twice the number of trips undertaken.
Available Seat Kilometres (ASKs)	Calculated by multiplying the number of seats available on each flight stage, by the distance in kilometres between the ports. The distances used are Great Circle Distances.
City-Pair	The ports shown make up the city-pair route. Passenger movements shown for a city pair reflect total traffic in both directions.
Flight Stage	The operation of an aircraft from take-off to landing.
Load Factor	The total revenue passenger kilometres performed as a percentage of the total available seat kilometres.
Passengers Carried	Revenue passengers carried.
Regular Public Transport Services (RPT)	All air service operations in which aircraft are available for the transport of members of the public and are conducted in accordance with fixed schedules. It does not include charter or other non-scheduled operations.
Revenue Passengers	All passengers paying any fare. Frequent flyer redemption travellers are regarded as revenue passengers.
Revenue Passenger Kilometres (RPKs)	Calculated by multiplying the number of revenue passengers travelling on each flight stage, by the distance in kilometres between the ports. The distances used are Great Circle Distances.
Traffic on board by stages	The total of all traffic (revenue passengers) on each flight stage between two directly connected airports.
..	Not available for confidentiality or other reasons.
NA	Not applicable.