



Australian Government

**Department of Infrastructure, Transport,
Regional Development, Communications, Sport and the Arts**

Bureau of Infrastructure and Transport Research Economics
STATISTICAL REPORT



Aviation

**Domestic aviation activity
April 2026**

The Department of Infrastructure, Transport, Regional Development, Communications, Sport and the Arts acknowledges the Traditional Custodians of country throughout Australia and their connections to land, sea and community.

We pay our respects to the Elders past and present and extend that respect to the Aboriginal and Torres Strait Islander people.

© Commonwealth of Australia 2026

ISSN: 1832 – 1968

BITRE Reference: 2026-060

Ownership of intellectual property rights in this publication

Unless otherwise noted, copyright (and any other intellectual property rights, if any) in this publication is owned by the Commonwealth of Australia (referred to below as the Commonwealth).

Disclaimer

The material contained in this publication is made available on the understanding that the Commonwealth is not providing professional advice, and that users exercise their own skill and care with respect to its use, and seek independent advice if necessary.

The Commonwealth makes no representations or warranties as to the contents or accuracy of the information contained in this publication. To the extent permitted by law, the Commonwealth disclaims liability to any person or organisation in respect of anything done, or omitted to be done, in reliance upon information contained in this publication.

Creative Commons licence

With the exception of (a) the Coat of Arms; and (b) the Department of Infrastructure, Transport, Regional Development, Communications, Sport and the Arts' photos and graphics, copyright in this publication is licensed under a Creative Commons Attribution 4.0 Australia Licence.

Creative Commons Attribution 4.0 Australia Licence is a standard form licence agreement that allows you to copy, communicate and adapt this publication provided that you attribute the work to the Commonwealth and abide by the other licence terms. A summary of the licence terms is available from <http://creativecommons.org/licenses/by/4.0/au/deed.en>.

The full licence terms are available from <http://creativecommons.org/licenses/by/4.0/au/legalcode.en>.

Use of the Coat of Arms

The Department of the Prime Minister and Cabinet (PM&C) sets the terms under which the Coat of Arms is used. Please refer to the [Commonwealth Coat of Arms Information and Guidelines | PM&C](#).

An appropriate citation for this report is:

Bureau of Infrastructure and Transport Research Economics (BITRE), 2026, Domestic aviation activity, Statistical Report, BITRE, Canberra ACT.

Contact us

This publication is available in PDF format. All other rights are reserved, including in relation to any Departmental logos or trademarks which may exist. For enquiries regarding the licence and any use of this publication, please contact:

Bureau of Infrastructure and Transport Research Economics (BITRE)
Department of Infrastructure, Transport, Regional Development, Communications, Sport and the Arts
GPO Box 501, Canberra ACT 2601, Australia

Email: avstats@infrastructure.gov.au

Website: www.bitre.gov.au

Enquiries: Nebojsa.Pavlovic@infrastructure.gov.au

Mobile: (02) 6136 8282

FOREWORD

This report provides an overview of domestic (including charter) commercial aviation activity in Australia for the month of April 2026.

The data covers revenue passengers carried by Australian-registered operators of scheduled Regular Public Transport (RPT) services over Australian flight stages and fixed-wing charter operators. These estimates include passengers carried between domestic airports on international flights operated by these carriers. The passengers carried refer to traffic on board by stages.

Estimates of passengers and aircraft movements for charter aviation are included in this publication, where BITRE confidentiality standards are met.

Individual routes shown are restricted to those with an average exceeding 8,000 passengers per month over the previous six months where two or more airlines operate in competition.

Information on the total network for the month of April 2026 and on the RPT network for the month of April 2026 is presented on page 2, with estimates for the year ended April 2026 presented on page 3.

Detailed information on individual routes can be found in the RPT summary pages 4-13 of this publication. For the month of April 2026, there are 62 individual routes published.

The top ten airports in terms of RPT passenger movements are shown on page 14.

Data on domestic RPT cargo movements at the top five cargo airports are provided on page 15. The table includes cargo carried on passenger flights operated by the Qantas group (including Jetstar), Virgin Australia, Airnorth and Skippers as well as the cargo carried by dedicated freighter aircraft operated by Qantas Freight and Team Global Express (formerly Toll).

The long-term trends for the top ten competitive RPT routes are presented graphically on pages 16-25.

Domestic RPT passenger movements at regional airports are shown on pages 26-27.

Tables providing estimates of domestic charter aviation activity are shown on page 28. BITRE confidentiality standards restrict publication of detailed estimates for individual Australian airports, with the exception of Perth Airport.

A list of definitions can be found on page 29.

This report was prepared by the Aviation Statistics Section of the Bureau of Infrastructure and Transport Research Economics with data provided by airlines.

Estimates are included where data were not available and data presented in this publication may contain revisions to previously published data.

Where figures have been rounded, discrepancies may occur between sums of component items and totals, and in percentage changes which are derived from figures prior to rounding.

CONTENTS

Highlights	1
Total network	2
RPT network	3
Top competitive routes	4
Top ten airports – passenger movements	14
Top five airports – cargo movements	15
Top ten routes	16
1. Melbourne – Sydney	16
2. Brisbane – Sydney.....	17
3. Brisbane – Melbourne	18
4. Gold Coast – Sydney	19
5. Adelaide – Melbourne	20
6. Gold Coast – Melbourne	21
7. Melbourne – Perth	22
8. Adelaide – Sydney	23
9. Perth – Sydney	24
10. Hobart – Melbourne	25
Top fifty regional airports	26
Domestic charter activity	28
Definitions	29

This page is intentionally left blank.

HIGHLIGHTS

There were 5.51 million passengers carried on Australian domestic commercial aviation (including charter operations) in April 2026, compared with 5.45 million in April 2025 (up 1.1%). This is also an increase of 2.6% on pre-COVID April 2019 passenger numbers (5.37 million).

5.12 million passengers were carried on Regular Public Transport (RPT) flights in April 2026 (excluding charter operations), an increase of 0.7% compared to April 2025.

For the month of April 2026, there were 51.0 thousand RPT aircraft trips, an increase of 0.7% on April 2025.

For the year ending April 2026, there were 60.82 million RPT passengers, an increase of 2.6% on the year ending April 2025.

RPT revenue passenger kilometres (RPKs) performed were 6.19 billion for the month, compared with 6.18 billion in April 2025 (up 0.2%).

Capacity, measured by available seat kilometres (ASKs), increased to 7.64 billion in April 2026 compared to 7.47 billion in April 2025 (up 2.4%).

The industry wide load factor (RPKs/ASKs) decreased from 82.7% in April 2025 to 81.0% in April 2026. The highest load factor (89.3%) was recorded on the Gold Coast – Melbourne route while the lowest load factor (43.9%) was recorded on the Brisbane – Moranbah route.

For the month of April 2026, Melbourne – Sydney was Australia's busiest RPT route with 659.6 thousand passengers, followed by Brisbane – Sydney with 380.1 thousand passengers and Brisbane – Melbourne with 304.8 thousand passengers.

Sydney was Australia's busiest domestic airport with 2.15 million passenger movements in April 2026, followed by Melbourne with 2.05 million passenger movements and Brisbane with 1.49 million passenger movements.

Total cargo movements at Australian airports on domestic RPT flights were 25.8 thousand tonnes in April 2026, an increase of 0.8% compared with April 2025.

In April 2026, there were 2.13 million domestic passenger movements through regional airports, an increase of 0.1% from April 2025. Out of the top 50 regional airports, the strongest increase was recorded at Orange Airport (up 24.8% on April 2025), while the largest decrease was recorded at Learmonth Airport (down 45.7% on April 2025).

Fixed-wing charter operators carried 394.1 thousand passengers in April 2026, an increase of 6.0% compared with April 2025. There were 6.4 thousand charter aircraft trips in April 2026, a decrease of 0.4% compared with April 2025. Perth Airport accounted for 35.9% of all charter passengers in Australia.

TOTAL NETWORK

Summary of monthly commercial aviation activity

	Apr 2025	Apr 2026	% Change
Total passengers carried (millions)	5.45	5.51	1.1
Aircraft trips (000s)	57.1	57.4	0.5

Note: Regular Public Transport and charter aviation activity
Helicopter, joy flights and sightseeing charter flights not included.

RPT NETWORK

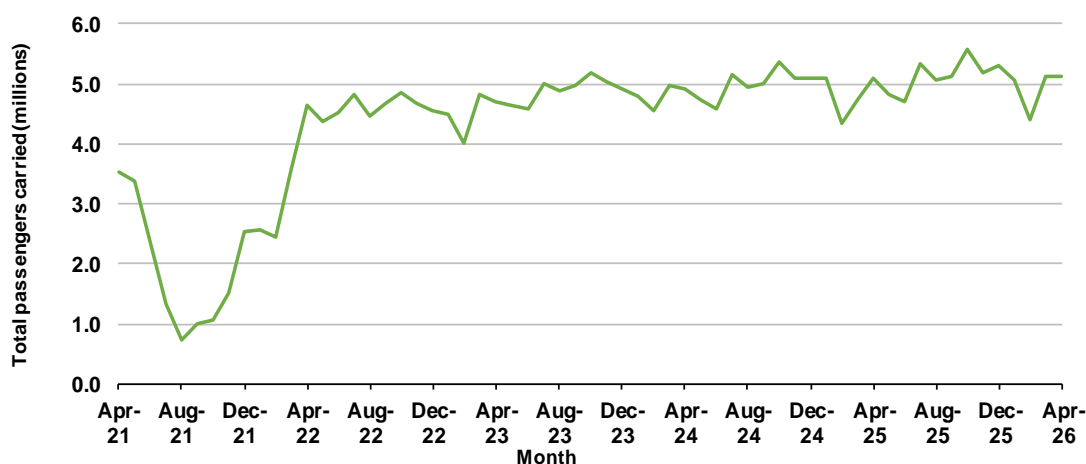
Summary of monthly RPT activity

	Apr 2025	Apr 2026	% Change
Total passengers carried (millions)	5.08	5.12	0.7
Revenue passenger kilometres (billions)	6.18	6.19	0.2
Available seats (millions)	6.32	6.43	1.7
Available seat kilometres (billions)	7.47	7.64	2.4
Load factor %	82.7	81.0	-1.8 *
Aircraft trips (000s)	50.7	51.0	0.7

* percentage point difference

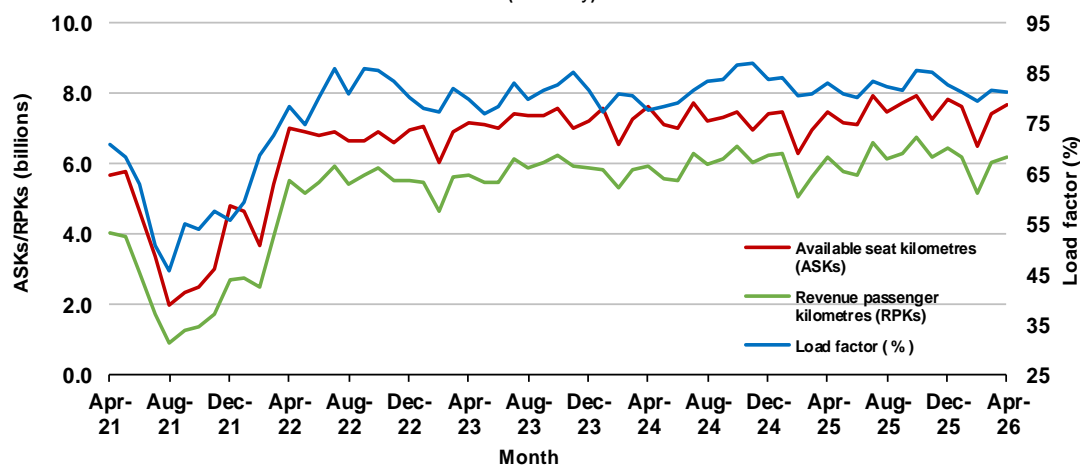
Domestic RPT passenger traffic

(monthly)



RPT Network utilisation

(monthly)



TOTAL NETWORK

Summary of annual commercial aviation activity

	YE Apr 2025	YE Apr 2026	% Change
Total passengers carried (millions)	63.58	65.31	2.7
Aircraft trips (000s)	677.6	682.2	0.7

Note: Regular Public Transport and charter aviation activity
Helicopter, joy flights and sightseeing charter flights not included.

RPT NETWORK

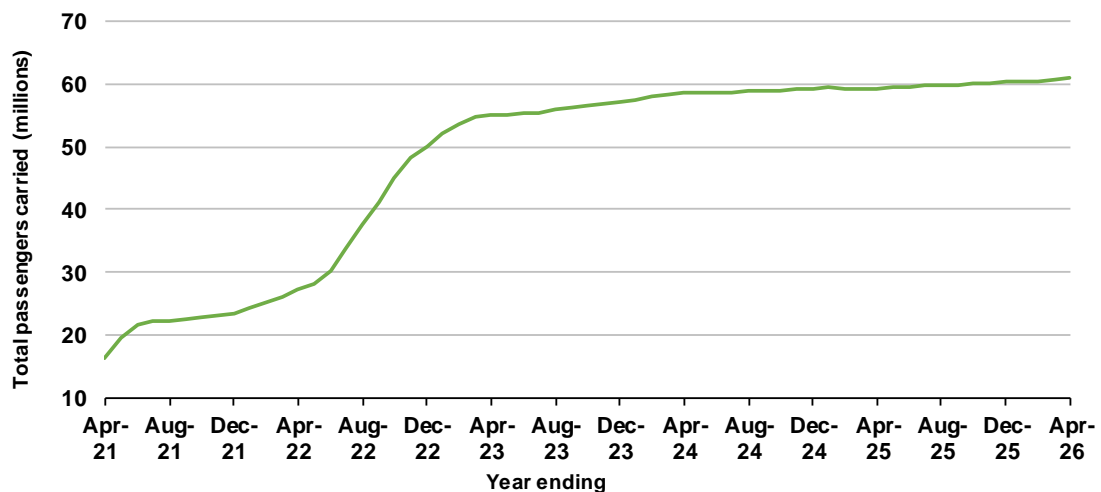
Summary of annual RPT activity

	YE Apr 2025	YE Apr 2026	% Change
Total passengers carried (millions)	59.25	60.82	2.6
Revenue passenger kilometres (billions)	71.25	73.37	3.0
Available seats (millions)	73.38	75.57	3.0
Available seat kilometres (billions)	86.21	89.40	3.7
Load factor %	82.6	82.1	-0.6 *
Aircraft trips (000s)	603.6	606.0	0.4

* percentage point difference

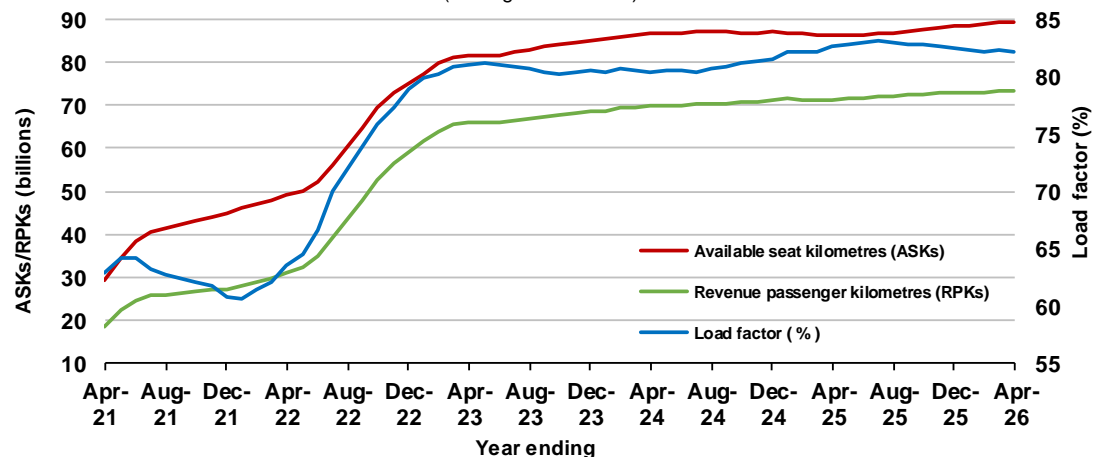
Domestic RPT passenger traffic

(moving annual totals)



RPT Network utilisation

(moving annual totals)



TOP COMPETITIVE ROUTES

Table 1: Passengers carried (000s) — annual activity

	City-Pair	YE Apr 2025	YE Apr 2026	% Change
1	Melbourne - Sydney	8 053.2	8 091.2	0.5
2	Brisbane - Sydney	4 363.6	4 431.4	1.6
3	Brisbane - Melbourne	3 551.0	3 691.3	4.0
4	Gold Coast - Sydney	2 456.8	2 609.8	6.2
5	Adelaide - Melbourne	2 325.4	2 409.4	3.6
6	Gold Coast - Melbourne	2 132.3	2 216.2	3.9
7	Melbourne - Perth	2 048.2	2 113.1	3.2
8	Adelaide - Sydney	1 884.2	1 900.8	0.9
9	Perth - Sydney	1 688.3	1 742.4	3.2
10	Hobart - Melbourne	1 400.4	1 457.8	4.1
11	Brisbane - Cairns	1 319.5	1 305.3	-1.1
12	Brisbane - Perth	1 114.0	1 144.1	2.7
13	Brisbane - Townsville	958.4	1 015.5	6.0
14	Canberra - Melbourne	988.4	967.6	-2.1
15	Cairns - Sydney	918.1	916.1	-0.2
16	Adelaide - Brisbane	861.7	901.9	4.7
17	Launceston - Melbourne	857.8	896.7	4.5
18	Cairns - Melbourne	834.5	858.7	2.9
19	Hobart - Sydney	825.7	841.3	1.9
20	Brisbane - Mackay	774.1	834.2	7.8
21	Sunshine Coast - Sydney	773.6	821.0	6.1
22	Melbourne - Sunshine Coast	719.7	776.3	7.9
23	Adelaide - Perth	708.2	726.9	2.6
24	Karratha - Perth	630.2	713.0	13.1
25	Brisbane - Canberra	640.1	667.0	4.2
26	Brisbane - Rockhampton	601.5	608.3	1.1
27	Canberra - Sydney	636.9	598.2	-6.1
28	Brisbane - Newcastle	513.2	531.4	3.5
29	Perth - Port Hedland	478.7	500.0	4.5
30	Ballina - Sydney	512.9	468.1	-8.7
31	Melbourne - Newcastle	464.3	467.3	0.6
32	Newman - Perth	420.0	445.0	5.9
33	Kalgoorlie - Perth	370.0	426.2	15.2
34	Broome - Perth	360.1	375.5	4.3
35	Brisbane - Darwin	337.4	358.9	6.4
36	Launceston - Sydney	344.8	358.9	4.1
37	Brisbane - Hobart	312.3	327.8	5.0
38	Brisbane - Proserpine	283.0	298.4	5.4
39	Darwin - Melbourne	292.8	290.8	-0.7
40	Adelaide - Gold Coast	276.0	288.2	4.4
41	Hamilton Island - Sydney	250.2	235.2	-6.0
42	Brisbane - Gladstone	222.3	218.8	-1.5
43	Coffs Harbour - Sydney	207.2	202.5	-2.3
44	Adelaide - Canberra	189.9	196.6	3.5
45	Brisbane - Emerald	187.9	189.9	1.0
46	Darwin - Perth	187.2	186.0	-0.6
47	Canberra - Gold Coast	175.5	181.0	3.1
48	Brisbane - Hamilton Island	162.3	179.5	10.6
49	Dubbo - Sydney	171.8	179.1	4.3
50	Sydney - Wagga Wagga	162.5	171.1	5.3

continued

Table 1: (continued) Passengers carried (000s) — annual activity

	City-Pair	YE Apr 2025	YE Apr 2026	% Change
51	Port Macquarie - Sydney	165.8	169.7	2.4
52	Adelaide - Port Lincoln	167.4	168.5	0.6
53	Albury - Sydney	160.0	159.2	-0.5
54	Brisbane - Launceston	155.3	156.2	0.6
55	Brisbane - Mount Isa	151.2	151.5	0.1
56	Melbourne - Mildura	152.2	151.2	-0.6
57	Devonport - Melbourne	131.7	149.4	13.5
58	Brisbane - Bundaberg	141.2	141.7	0.4
59	Geraldton - Perth	117.5	122.7	4.5
60	Ayers Rock - Melbourne	115.4	117.8	2.1
61	Adelaide - Alice Springs	105.9	102.5	-3.2
62	Brisbane - Moranbah	109.6	94.1	-14.1
	Total domestic network	59 253.3	60 818.2	2.6

Table 2: Passengers carried (000s) — monthly activity

	City-Pair	Apr 2025	Apr 2026	% Change
1	Melbourne - Sydney	675.1	659.6	-2.3
2	Brisbane - Sydney	370.4	380.1	2.6
3	Brisbane - Melbourne	311.5	304.8	-2.2
4	Gold Coast - Sydney	213.5	227.0	6.3
5	Adelaide - Melbourne	203.9	211.5	3.7
6	Gold Coast - Melbourne	184.2	195.0	5.9
7	Melbourne - Perth	179.4	179.8	0.2
8	Adelaide - Sydney	170.9	169.9	-0.6
9	Perth - Sydney	154.3	147.4	-4.5
10	Hobart - Melbourne	127.3	120.0	-5.7
11	Brisbane - Cairns	113.2	103.0	-9.0
12	Brisbane - Perth	99.9	95.6	-4.3
13	Brisbane - Townsville	79.7	86.4	8.5
14	Adelaide - Brisbane	70.3	81.9	16.6
15	Canberra - Melbourne	81.8	77.7	-5.0
16	Cairns - Sydney	76.4	74.6	-2.3
17	Sunshine Coast - Sydney	63.4	74.3	17.2
18	Launceston - Melbourne	73.7	73.7	0.0
19	Cairns - Melbourne	76.1	72.0	-5.5
20	Melbourne - Sunshine Coast	59.6	68.6	15.1
21	Brisbane - Mackay	67.8	68.1	0.5
22	Hobart - Sydney	67.0	66.0	-1.5
23	Adelaide - Perth	66.3	64.9	-2.1
24	Karratha - Perth	57.5	62.9	9.4
25	Brisbane - Canberra	51.6	56.2	8.8
26	Brisbane - Rockhampton	49.4	50.1	1.4
27	Perth - Port Hedland	41.3	44.2	7.0
28	Brisbane - Newcastle	44.5	43.9	-1.5
29	Ballina - Sydney	41.4	40.6	-2.0
30	Canberra - Sydney	46.0	40.2	-12.6
31	Kalgoorlie - Perth	31.4	38.2	21.8
32	Melbourne - Newcastle	40.5	37.7	-7.0
33	Newman - Perth	38.0	37.1	-2.5
34	Launceston - Sydney	30.7	32.8	6.8
35	Broome - Perth	31.8	31.8	0.1
36	Brisbane - Darwin	29.7	27.2	-8.3
37	Adelaide - Gold Coast	21.5	26.3	22.3
38	Brisbane - Hobart	27.3	25.9	-5.3
39	Darwin - Melbourne	24.7	25.0	1.2
40	Brisbane - Proserpine	24.0	24.4	1.8
41	Brisbane - Gladstone	17.0	18.2	7.6
42	Hamilton Island - Sydney	22.1	17.9	-18.9
43	Brisbane - Hamilton Island	14.3	16.8	17.4
44	Coffs Harbour - Sydney	15.8	16.8	5.8
45	Adelaide - Canberra	15.6	16.5	6.2
46	Brisbane - Emerald	15.5	16.0	3.4
47	Dubbo - Sydney	13.6	15.3	12.0
48	Canberra - Gold Coast	14.8	15.2	3.0
49	Sydney - Wagga Wagga	13.9	14.4	3.6
50	Adelaide - Port Lincoln	13.7	14.0	2.1

continued

Table 2: (continued) Passengers carried (000s) — monthly activity

	City-Pair	Apr 2025	Apr 2026	% Change
51	Port Macquarie - Sydney	13.4	13.8	3.2
52	Albury - Sydney	12.4	13.5	8.7
53	Darwin - Perth	15.0	13.1	-12.8
54	Brisbane - Launceston	12.1	13.1	8.2
55	Melbourne - Mildura	12.6	12.5	-1.5
56	Devonport - Melbourne	13.0	12.3	-5.8
57	Brisbane - Mount Isa	12.1	12.2	0.5
58	Brisbane - Bundaberg	10.9	11.6	6.5
59	Ayers Rock - Melbourne	9.2	10.9	18.7
60	Geraldton - Perth	10.1	10.3	2.0
61	Adelaide - Alice Springs	9.6	8.7	-9.7
62	Brisbane - Moranbah	8.4	7.1	-15.0
	Total domestic network	5 081.3	5 117.8	0.7

Table 3: Available seats (000s) — monthly activity

	City-Pair	Apr 2025	Apr 2026	% Change
1	Melbourne - Sydney	811.4	791.4	-2.5
2	Brisbane - Sydney	435.2	439.1	0.9
3	Brisbane - Melbourne	367.5	361.6	-1.6
4	Gold Coast - Sydney	260.8	263.3	1.0
5	Adelaide - Melbourne	243.9	255.1	4.6
6	Gold Coast - Melbourne	222.8	218.4	-2.0
7	Melbourne - Perth	199.0	205.2	3.1
8	Adelaide - Sydney	206.6	212.6	2.9
9	Perth - Sydney	168.7	175.1	3.7
10	Hobart - Melbourne	143.8	141.5	-1.6
11	Brisbane - Cairns	137.6	120.8	-12.2
12	Brisbane - Perth	111.8	116.2	4.0
13	Brisbane - Townsville	96.6	110.3	14.1
14	Adelaide - Brisbane	80.1	103.1	28.7
15	Canberra - Melbourne	110.5	103.3	-6.5
16	Cairns - Sydney	91.5	88.8	-3.0
17	Sunshine Coast - Sydney	75.3	86.4	14.8
18	Launceston - Melbourne	82.2	87.3	6.2
19	Cairns - Melbourne	93.1	89.7	-3.6
20	Melbourne - Sunshine Coast	69.3	79.1	14.2
21	Brisbane - Mackay	87.9	90.5	2.9
22	Hobart - Sydney	76.2	77.2	1.3
23	Adelaide - Perth	76.5	79.2	3.6
24	Karratha - Perth	81.2	91.9	13.2
25	Brisbane - Canberra	67.6	74.2	9.7
26	Brisbane - Rockhampton	59.1	62.9	6.4
27	Perth - Port Hedland	64.2	68.5	6.6
28	Brisbane - Newcastle	54.4	56.2	3.3
29	Ballina - Sydney	48.7	48.0	-1.5
30	Canberra - Sydney	75.0	63.4	-15.5
31	Kalgoorlie - Perth	58.5	63.4	8.4
32	Melbourne - Newcastle	46.7	45.8	-2.0
33	Newman - Perth	61.5	63.2	2.8
34	Launceston - Sydney	34.2	38.5	12.7
35	Broome - Perth	42.1	51.5	22.3
36	Brisbane - Darwin	36.0	35.5	-1.4
37	Adelaide - Gold Coast	24.5	29.9	21.9
38	Brisbane - Hobart	28.9	29.5	2.0
39	Darwin - Melbourne	31.5	33.5	6.1
40	Brisbane - Proserpine	27.1	27.6	1.6
41	Brisbane - Gladstone	25.7	26.8	4.3
42	Hamilton Island - Sydney	26.7	21.7	-18.7
43	Brisbane - Hamilton Island	18.3	21.9	19.6
44	Coffs Harbour - Sydney	20.1	24.7	22.8
45	Adelaide - Canberra	21.7	24.7	13.8
46	Brisbane - Emerald	22.8	24.0	5.4
47	Dubbo - Sydney	20.8	21.4	3.1
48	Canberra - Gold Coast	17.0	17.1	0.9
49	Sydney - Wagga Wagga	18.8	21.1	11.8
50	Adelaide - Port Lincoln	21.3	23.3	9.6

continued

Table 3: (continued) Available seats (000s) — monthly activity

	City-Pair	Apr 2025	Apr 2026	% Change
51	Port Macquarie - Sydney	18.1	19.9	9.6
52	Albury - Sydney	16.4	19.0	16.0
53	Darwin - Perth	20.3	18.8	-7.7
54	Brisbane - Launceston	12.9	14.7	13.7
55	Melbourne - Mildura	17.2	19.4	12.6
56	Devonport - Melbourne	17.8	16.7	-6.2
57	Brisbane - Mount Isa	20.7	21.2	2.6
58	Brisbane - Bundaberg	16.5	18.3	11.2
59	Ayers Rock - Melbourne	10.1	12.4	23.0
60	Geraldton - Perth	17.4	19.1	9.7
61	Adelaide - Alice Springs	12.9	10.5	-18.5
62	Brisbane - Moranbah	15.1	16.2	7.5
	Total domestic network	6 320.1	6 430.1	1.7

Table 4: Load factors (%) — monthly activity

	City-Pair	Apr 2025	Apr 2026	% Point diff
1	Melbourne - Sydney	83.2	83.4	0.1
2	Brisbane - Sydney	85.1	86.6	1.5
3	Brisbane - Melbourne	84.8	84.3	-0.5
4	Gold Coast - Sydney	81.9	86.2	4.3
5	Adelaide - Melbourne	83.6	82.9	-0.7
6	Gold Coast - Melbourne	82.7	89.3	6.6
7	Melbourne - Perth	90.1	87.6	-2.5
8	Adelaide - Sydney	82.7	79.9	-2.8
9	Perth - Sydney	91.4	84.2	-7.2
10	Hobart - Melbourne	88.5	84.8	-3.7
11	Brisbane - Cairns	82.3	85.3	3.0
12	Brisbane - Perth	89.4	82.3	-7.1
13	Brisbane - Townsville	82.4	78.4	-4.1
14	Adelaide - Brisbane	87.7	79.5	-8.2
15	Canberra - Melbourne	74.1	75.3	1.2
16	Cairns - Sydney	83.4	84.0	0.6
17	Sunshine Coast - Sydney	84.2	86.0	1.8
18	Launceston - Melbourne	89.7	84.4	-5.2
19	Cairns - Melbourne	81.8	80.2	-1.6
20	Melbourne - Sunshine Coast	86.1	86.8	0.7
21	Brisbane - Mackay	77.1	75.3	-1.8
22	Hobart - Sydney	87.9	85.4	-2.4
23	Adelaide - Perth	86.7	82.0	-4.7
24	Karratha - Perth	70.8	68.4	-2.4
25	Brisbane - Canberra	76.3	75.7	-0.6
26	Brisbane - Rockhampton	83.5	79.6	-3.9
27	Perth - Port Hedland	64.3	64.5	0.2
28	Brisbane - Newcastle	81.9	78.1	-3.8
29	Ballina - Sydney	85.1	84.6	-0.4
30	Canberra - Sydney	61.4	63.5	2.1
31	Kalgoorlie - Perth	53.7	60.3	6.6
32	Melbourne - Newcastle	86.7	82.3	-4.4
33	Newman - Perth	61.9	58.7	-3.2
34	Launceston - Sydney	89.8	85.1	-4.7
35	Broome - Perth	75.4	61.7	-13.7
36	Brisbane - Darwin	82.3	76.6	-5.7
37	Adelaide - Gold Coast	87.8	88.1	0.2
38	Brisbane - Hobart	94.5	87.7	-6.8
39	Darwin - Melbourne	78.3	74.7	-3.6
40	Brisbane - Proserpine	88.6	88.7	0.1
41	Brisbane - Gladstone	66.0	68.1	2.1
42	Hamilton Island - Sydney	82.6	82.3	-0.2
43	Brisbane - Hamilton Island	78.0	76.6	-1.4
44	Coffs Harbour - Sydney	78.8	67.9	-10.9
45	Adelaide - Canberra	71.7	66.9	-4.7
46	Brisbane - Emerald	67.8	66.5	-1.3
47	Dubbo - Sydney	65.6	71.3	5.7
48	Canberra - Gold Coast	87.1	88.9	1.8
49	Sydney - Wagga Wagga	74.0	68.5	-5.5
50	Adelaide - Port Lincoln	64.3	59.8	-4.4

continued

Table 4: (continued) Load factors (%) — monthly activity

	City-Pair	Apr 2025	Apr 2026	% Point diff
51	Port Macquarie - Sydney	73.8	69.5	-4.3
52	Albury - Sydney	76.0	71.2	-4.8
53	Darwin - Perth	74.0	69.9	-4.1
54	Brisbane - Launceston	93.7	89.2	-4.5
55	Melbourne - Mildura	73.4	64.2	-9.2
56	Devonport - Melbourne	73.4	73.6	0.3
57	Brisbane - Mount Isa	58.5	57.4	-1.2
58	Brisbane - Bundaberg	66.2	63.3	-2.8
59	Ayers Rock - Melbourne	91.1	87.9	-3.1
60	Geraldton - Perth	57.8	53.7	-4.1
61	Adelaide - Alice Springs	74.5	82.5	8.0
62	Brisbane - Moranbah	55.5	43.9	-11.6
	Total domestic network	82.7	81.0	-1.8

Table 5: Aircraft trips ^(a) — monthly activity

	City-Pair	Apr 2025	Apr 2026	% Change
1	Melbourne - Sydney	4 615	4 550	-1.4
2	Brisbane - Sydney	2 557	2 571	0.5
3	Brisbane - Melbourne	2 196	2 151	-2.0
4	Gold Coast - Sydney	1 465	1 484	1.3
5	Adelaide - Melbourne	1 435	1 520	5.9
6	Gold Coast - Melbourne	1 198	1 176	-1.8
7	Melbourne - Perth	1 124	1 156	2.8
8	Adelaide - Sydney	1 184	1 258	6.3
9	Perth - Sydney	905	929	2.7
10	Hobart - Melbourne	837	822	-1.8
11	Brisbane - Cairns	979	862	-12.0
12	Brisbane - Perth	633	670	5.8
13	Brisbane - Townsville	771	752	-2.5
14	Adelaide - Brisbane	621	700	12.7
15	Canberra - Melbourne	701	735	4.9
16	Cairns - Sydney	492	483	-1.8
17	Sunshine Coast - Sydney	420	506	20.5
18	Launceston - Melbourne	627	665	6.1
19	Cairns - Melbourne	486	479	-1.4
20	Melbourne - Sunshine Coast	362	422	16.6
21	Brisbane - Mackay	586	699	19.3
22	Hobart - Sydney	460	466	1.3
23	Adelaide - Perth	415	455	9.6
24	Karratha - Perth	492	542	10.2
25	Brisbane - Canberra	569	561	-1.4
26	Brisbane - Rockhampton	613	671	9.5
27	Perth - Port Hedland	394	413	4.8
28	Brisbane - Newcastle	448	474	5.8
29	Ballina - Sydney	312	333	6.7
30	Canberra - Sydney	1 231	1 082	-12.1
31	Kalgoorlie - Perth	393	418	6.4
32	Melbourne - Newcastle	305	303	-0.7
33	Newman - Perth	367	381	3.8
34	Launceston - Sydney	216	227	5.1
35	Broome - Perth	271	328	21.0
36	Brisbane - Darwin	207	206	-0.5
37	Adelaide - Gold Coast	120	149	24.2
38	Brisbane - Hobart	176	184	4.5
39	Darwin - Melbourne	176	188	6.8
40	Brisbane - Proserpine	166	153	-7.8
41	Brisbane - Gladstone	292	323	10.6
42	Hamilton Island - Sydney	151	125	-17.2
43	Brisbane - Hamilton Island	138	140	1.4
44	Coffs Harbour - Sydney	361	376	4.2
45	Adelaide - Canberra	204	239	17.2
46	Brisbane - Emerald	298	317	6.4
47	Dubbo - Sydney	399	362	-9.3
48	Canberra - Gold Coast	94	94	0.0
49	Sydney - Wagga Wagga	332	364	9.6
50	Adelaide - Port Lincoln	439	458	4.3

continued

Table 5: (continued) Aircraft trips ^(a) — monthly activity

	City-Pair	Apr 2025	Apr 2026	% Change
51	Port Macquarie - Sydney	322	318	-1.2
52	Albury - Sydney	296	320	8.1
53	Darwin - Perth	118	122	3.4
54	Brisbane - Launceston	74	81	9.5
55	Melbourne - Mildura	330	359	8.8
56	Devonport - Melbourne	293	266	-9.2
57	Brisbane - Mount Isa	189	170	-10.1
58	Brisbane - Bundaberg	273	298	9.2
59	Ayers Rock - Melbourne	58	68	17.2
60	Geraldton - Perth	202	208	3.0
61	Adelaide - Alice Springs	150	121	-19.3
62	Brisbane - Moranbah	200	215	7.5
	Total domestic network	50 703	51 040	0.7

(a) Includes RPT cargo flights.

TOP TEN AIRPORTS – PASSENGER MOVEMENTS

Table 6: Top ten airports, RPT passenger movements (000s) - monthly activity

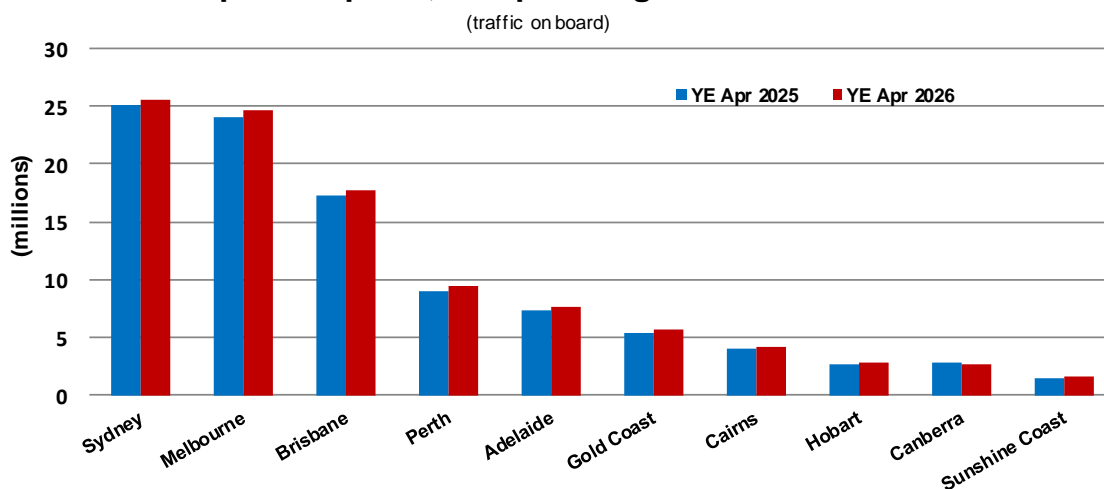
Airport	Apr 2025	Apr 2026	% Change	% of Total
1 Sydney	2 137.1	2 145.9	0.4	21.0
2 Melbourne	2 074.9	2 045.6	-1.4	20.0
3 Brisbane	1 474.3	1 486.5	0.8	14.5
4 Perth	807.0	802.0	-0.6	7.8
5 Adelaide	644.9	667.7	3.5	6.5
6 Gold Coast	468.5	498.8	6.5	4.9
7 Cairns	353.3	337.7	-4.4	3.3
8 Hobart	242.8	237.2	-2.3	2.3
9 Canberra	221.5	216.4	-2.3	2.1
10 Sunshine Coast	132.4	152.5	15.2	1.5
Total top ten airports	8 556.6	8 590.2	0.4	83.9
Total domestic network	10 162.5	10 235.6	0.7	100.0

Table 7: Top ten airports, RPT passenger movements (000s) - annual activity

Airport	YE Apr 2025	YE Apr 2026	% Change	% of Total
1 Sydney	25 149.8	25 532.3	1.5	21.0
2 Melbourne	24 076.1	24 659.3	2.4	20.3
3 Brisbane	17 261.9	17 759.8	2.9	14.6
4 Perth	9 072.7	9 420.3	3.8	7.7
5 Adelaide	7 381.6	7 592.4	2.9	6.2
6 Gold Coast	5 393.9	5 671.0	5.1	4.7
7 Cairns	4 107.3	4 144.8	0.9	3.4
8 Hobart	2 770.3	2 897.5	4.6	2.4
9 Canberra	2 773.0	2 756.9	-0.6	2.3
10 Sunshine Coast	1 568.6	1 709.8	9.0	1.4
Total top ten airports	99 555.2	102 144.1	2.6	84.0
Total domestic network	118 506.5	121 636.5	2.6	100.0

Note: Airport passenger movement numbers are the sum of passenger arrivals and departures at each airport.

Top ten airports, RPT passenger movements



TOP FIVE AIRPORTS – CARGO MOVEMENTS

Table 8: Top five airports, domestic RPT cargo movements (000s tonnes) - monthly activity

Airport	Apr 2025	Apr 2026	% Change	% of Total
1 Melbourne	7.0	7.3	3.4	28.1
2 Sydney	5.4	5.4	-1.2	20.8
3 Brisbane	4.5	4.6	0.9	17.7
4 Perth	2.9	2.9	-0.3	11.2
5 Adelaide	1.3	1.5	14.0	5.8
Total top five airports	21.2	21.6	1.9	83.6
Total domestic network	25.6	25.8	0.8	100.0

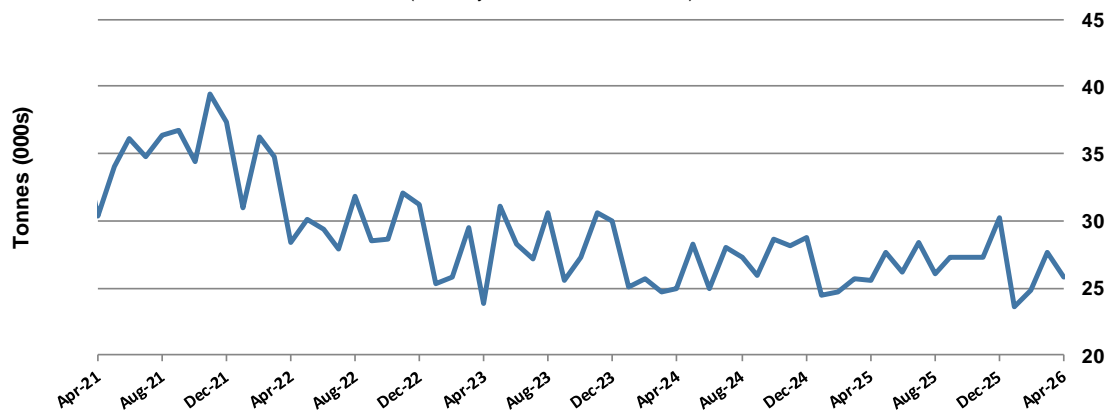
Table 9: Top five airports, domestic RPT cargo movements (000s tonnes) - annual activity

Airport	YE Apr 2025	YE Apr 2026	% Change	% of Total
1 Melbourne	88.0	89.7	2.0	27.8
2 Sydney	67.8	67.8	0.1	21.0
3 Brisbane	57.3	57.8	0.9	18.0
4 Perth	36.2	36.0	-0.6	11.2
5 Adelaide	17.5	17.0	-2.4	5.3
Total top five airports	266.8	268.5	0.6	83.3
Total domestic network	320.5	322.2	0.5	100.0

Note: Airport cargo tonnes are the sum of cargo tonnes on arrivals and departures at each airport.

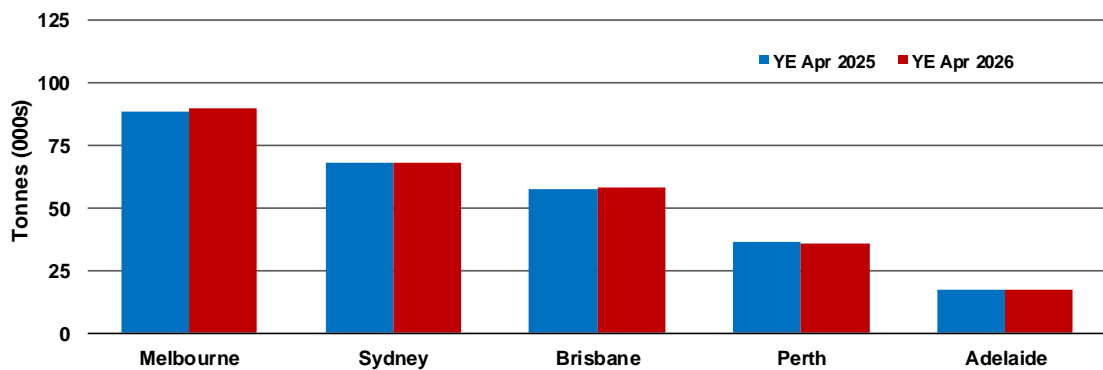
Total domestic network - cargo movement

(monthly totals - traffic on board)



Top five airports, cargo movements

(Domestic cargo traffic - traffic on board)



Note: Airport cargo tonnes are the sum of cargo tonnes on arrivals and departures at each airport.

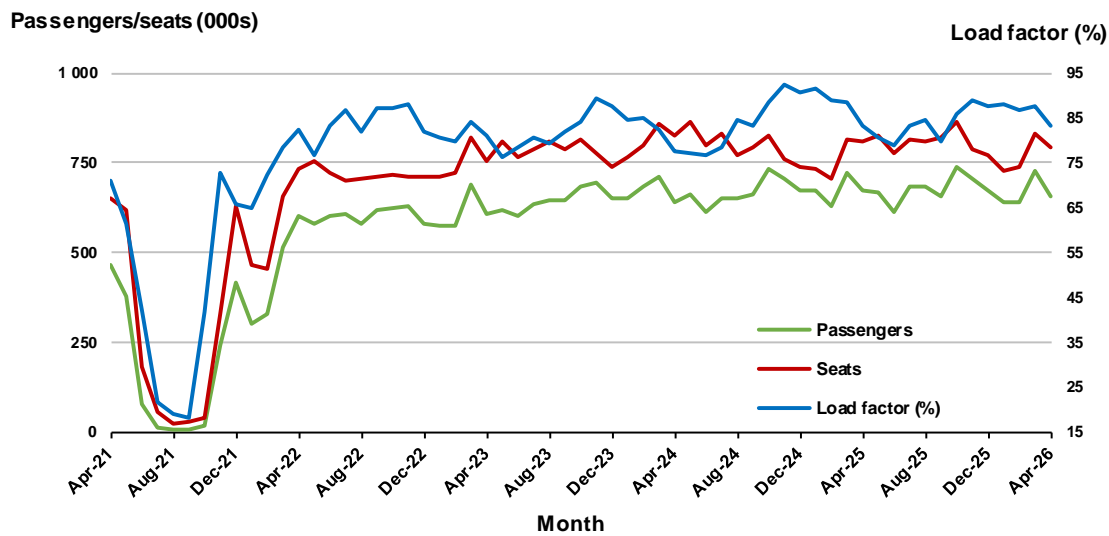
TOP TEN ROUTES

1. Melbourne - Sydney

Monthly data

	Apr 2025	Apr 2026	% Change
Passengers carried (000s)	675.1	659.6	-2.3
Seats (000s)	811.4	791.4	-2.5
Load factor %	83.2	83.4	0.1 *
Aircraft trips	4 615	4 550	-1.4

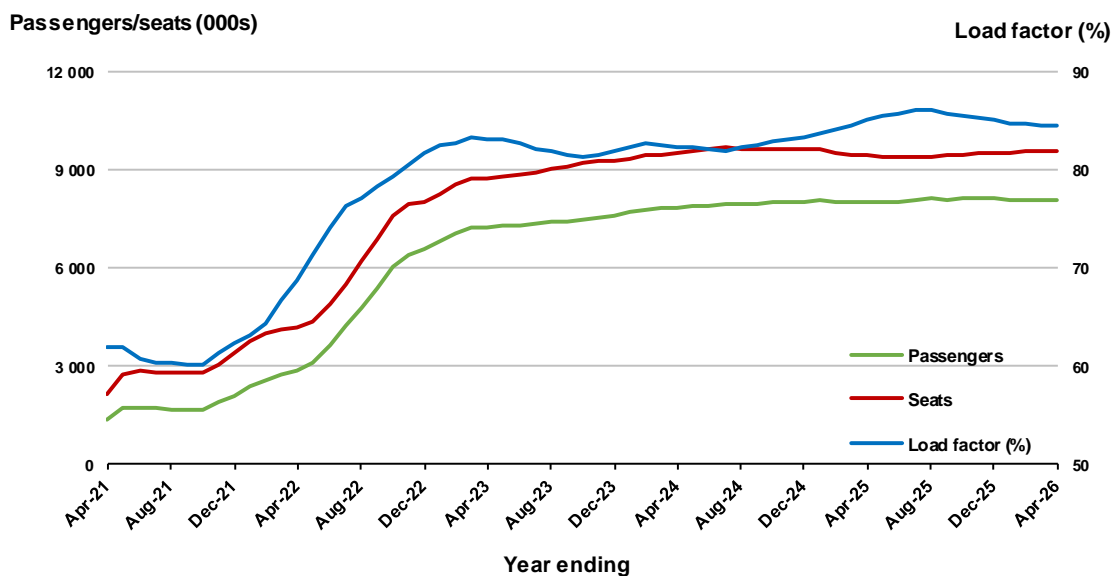
* percentage point difference



Moving annual data

	YE Apr 2025	YE Apr 2026	% Change
Passengers carried (000s)	8 053.2	8 091.2	0.5
Seats (000s)	9 463.3	9 565.3	1.1
Load factor %	85.1	84.6	-0.5 *
Aircraft trips	54 421	54 620	0.4

* percentage point difference

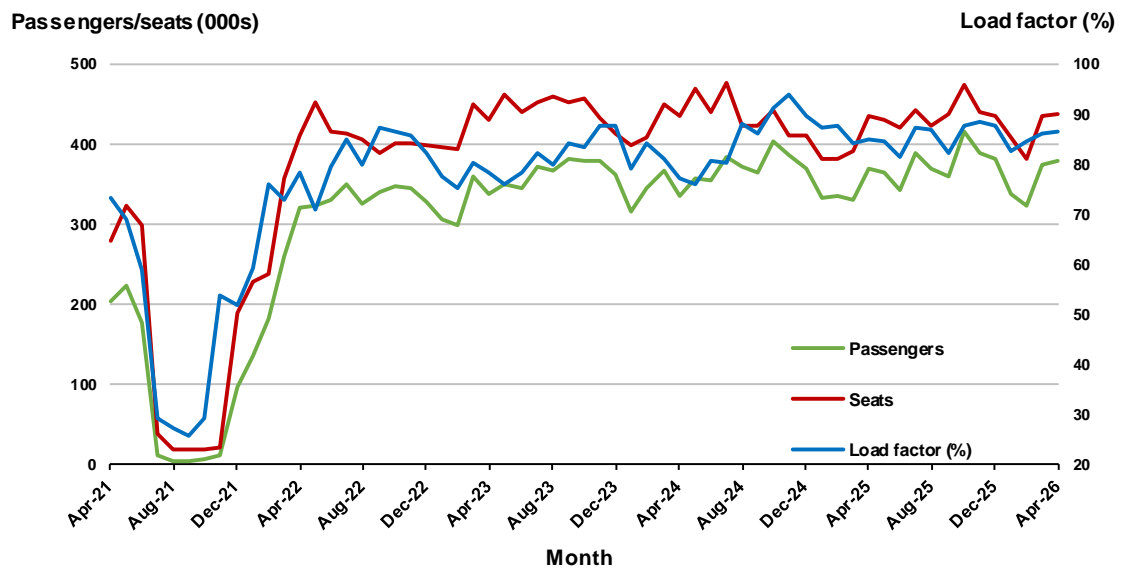


2. Brisbane - Sydney

Monthly data

	Apr 2025	Apr 2026	% Change
Passengers carried (000s)	370.4	380.1	2.6
Seats (000s)	435.2	439.1	0.9
Load factor %	85.1	86.6	1.5 *
Aircraft trips	2 557	2 571	0.5

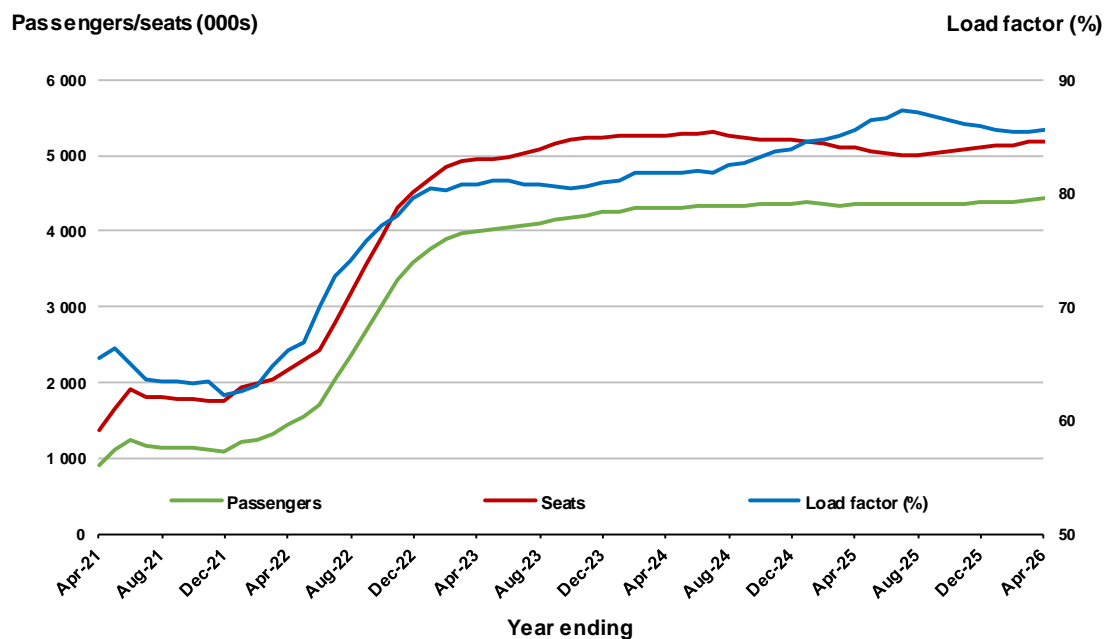
* percentage point difference



Moving annual data

	YE Apr 2025	YE Apr 2026	% Change
Passengers carried (000s)	4 363.6	4 431.4	1.6
Seats (000s)	5 094.0	5 176.3	1.6
Load factor %	85.7	85.6	-0.1 *
Aircraft trips	30 618	30 766	0.5

* percentage point difference

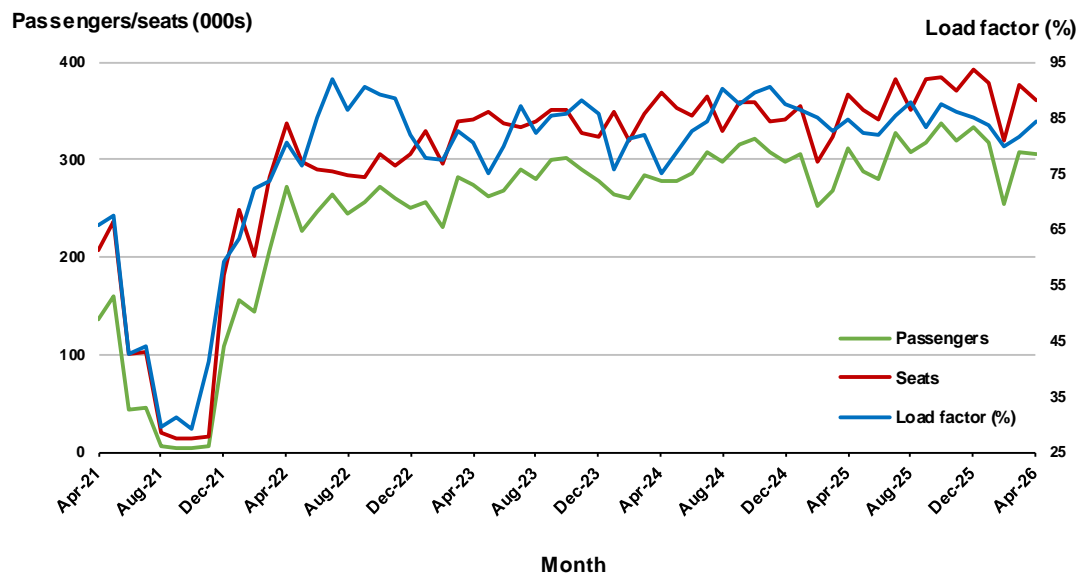


3. Brisbane - Melbourne

Monthly data

	Apr 2025	Apr 2026	% Change
Passengers carried (000s)	311.5	304.8	-2.2
Seats (000s)	367.5	361.6	-1.6
Load factor %	84.8	84.3	-0.5 *
Aircraft trips	2 196	2 151	-2.0

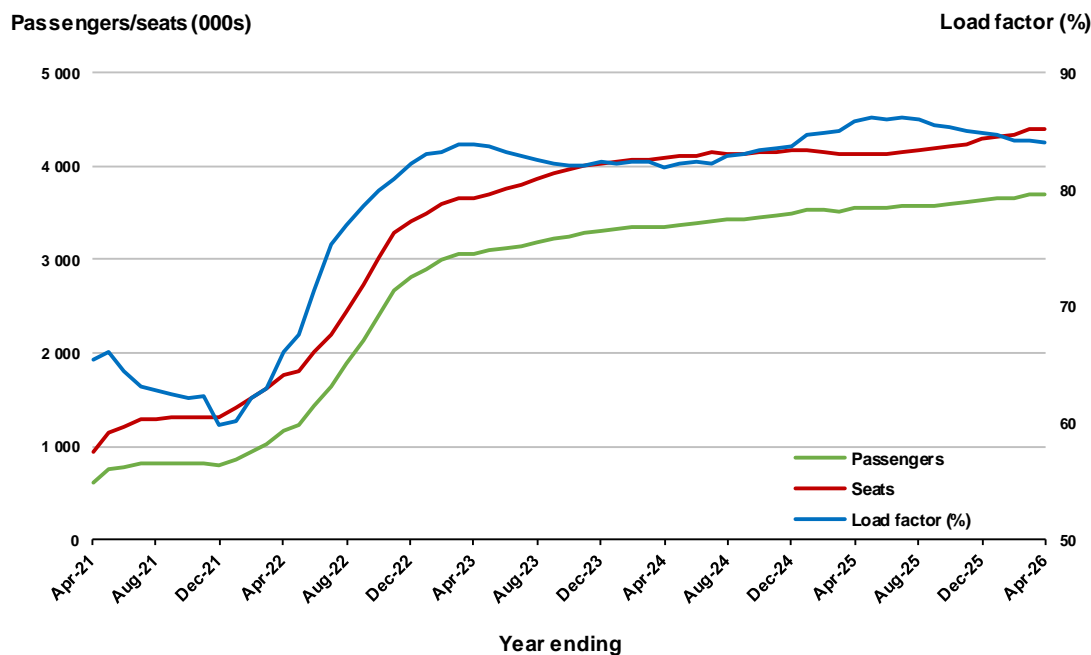
* percentage point difference



Moving annual data

	YE Apr 2025	YE Apr 2026	% Change
Passengers carried (000s)	3 551.0	3 691.3	4.0
Seats (000s)	4 135.0	4 389.8	6.2
Load factor %	85.9	84.1	-1.8 *
Aircraft trips	24 821	26 591	7.1

* percentage point difference



4. Gold Coast - Sydney ^(a)

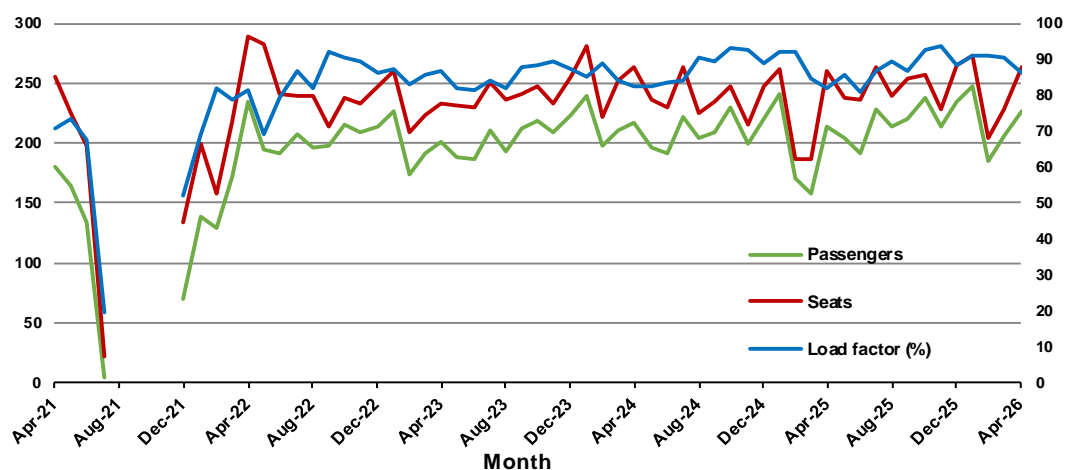
Monthly data

	Apr 2025	Apr 2026	% Change
Passengers carried (000s)	213.5	227.0	6.3
Seats (000s)	260.8	263.3	1.0
Load factor %	81.9	86.2	4.3 *
Aircraft trips	1 465	1 484	1.3

* percentage point difference

Passengers/seats (000s)

Load factor (%)



(a) August to November 2020 data not available for release,

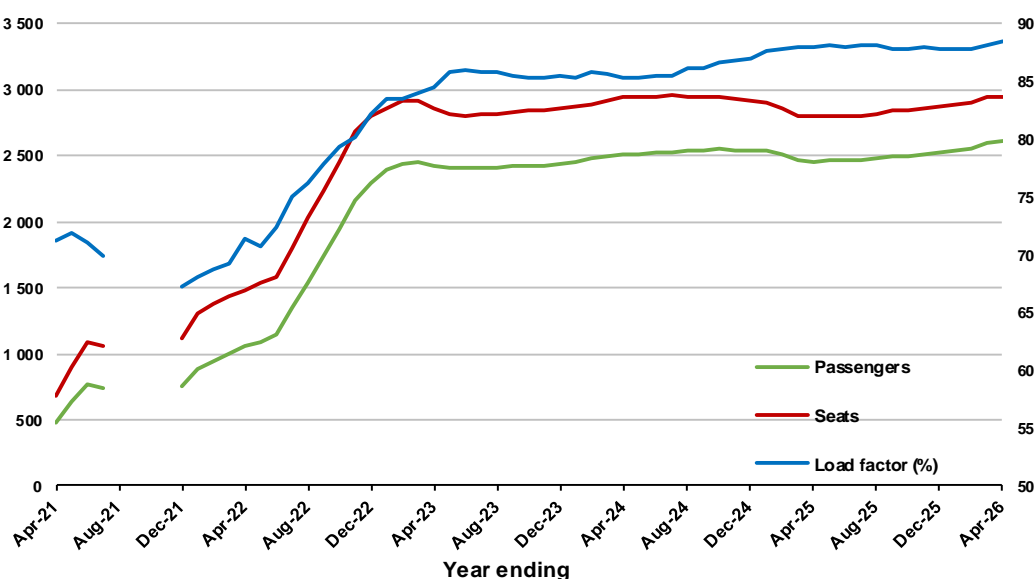
Moving annual data

	YE Apr 2025	YE Apr 2026	% Change
Passengers carried (000s)	2 456.8	2 609.8	6.2
Seats (000s)	2 795.8	2 949.1	5.5
Load factor %	87.9	88.5	0.6 *
Aircraft trips	15 838	16 730	5.6

* percentage point difference

Passengers/seats (000s)

Load factor (%)



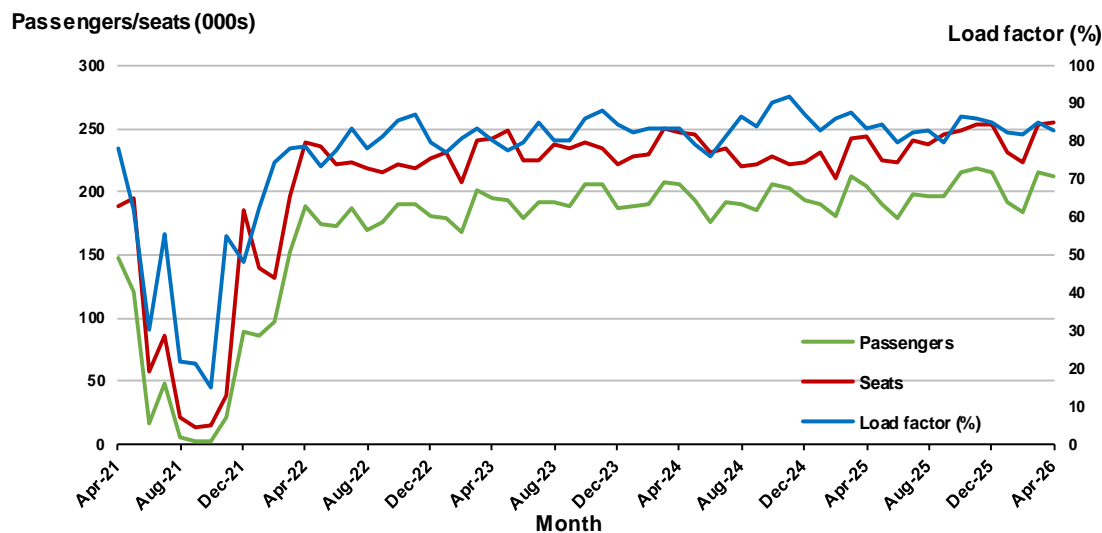
(a) August to November 2020 moving annual totals are not available for release.

5. Adelaide - Melbourne

Monthly data

	Apr 2025	Apr 2026	% Change
Passengers carried (000s)	203.9	211.5	3.7
Seats (000s)	243.9	255.1	4.6
Load factor %	83.6	82.9	-0.7 *
Aircraft trips	1 435	1 520	5.9

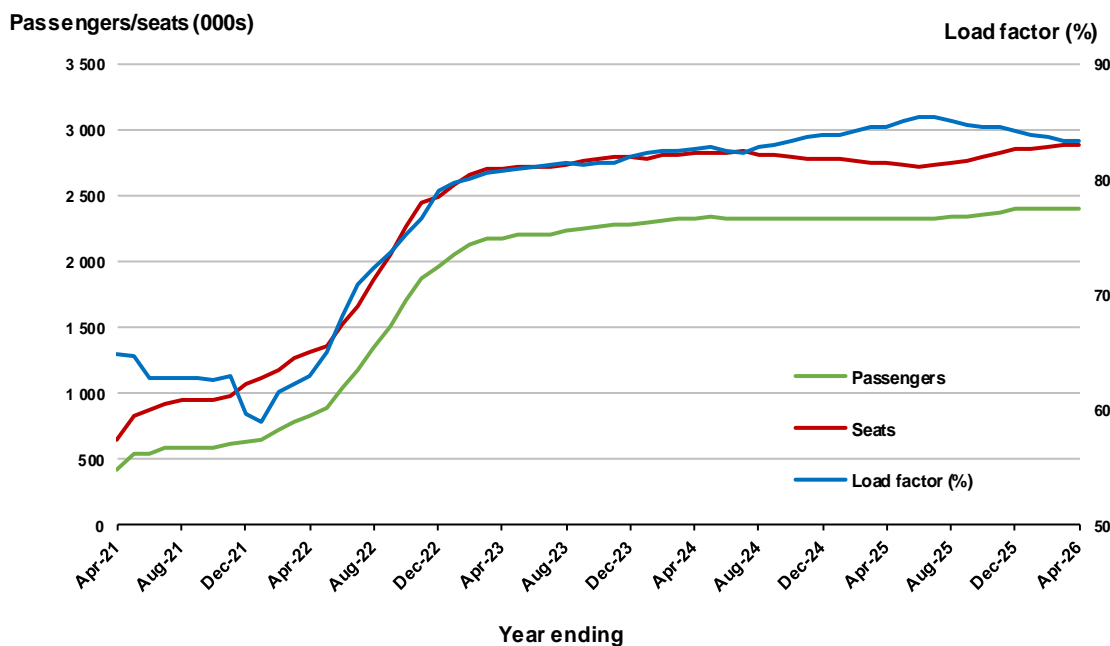
* percentage point difference



Moving annual data

	YE Apr 2025	YE Apr 2026	% Change
Passengers carried (000s)	2 132.3	2 216.2	3.9
Seats (000s)	2 390.2	2 463.0	3.0
Load factor %	89.2	90.0	0.8 *
Aircraft trips	12 925	13 319	3.0

* percentage point difference



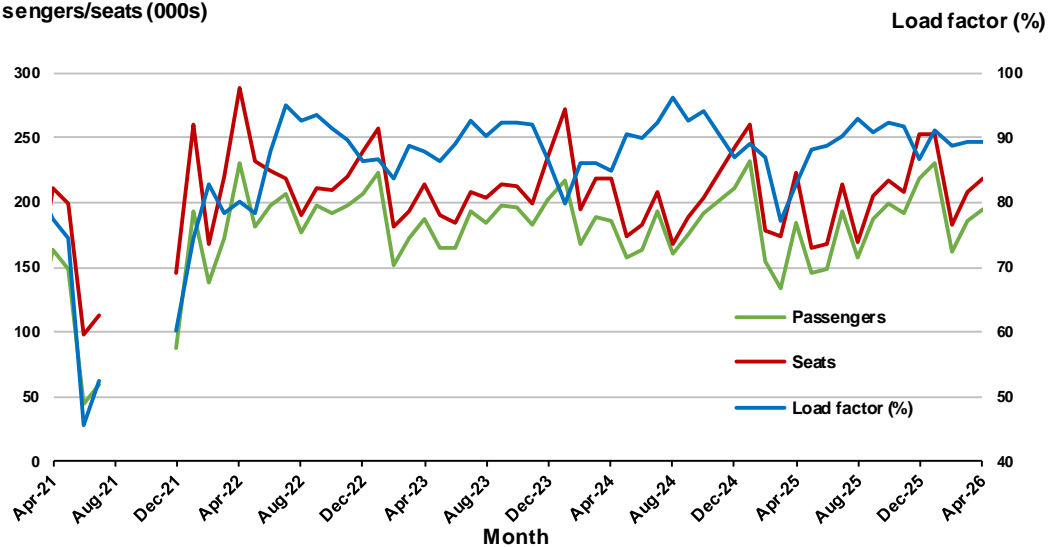
6. Gold Coast - Melbourne ^(a)

Monthly data

	Apr 2025	Apr 2026	% Change
Passengers carried (000s)	184.2	195.0	5.9
Seats (000s)	222.8	218.4	-2.0
Load factor %	82.7	89.3	6.6 *
Aircraft trips	1 198	1 176	-1.8

* percentage point difference

Passengers/seats (000s)



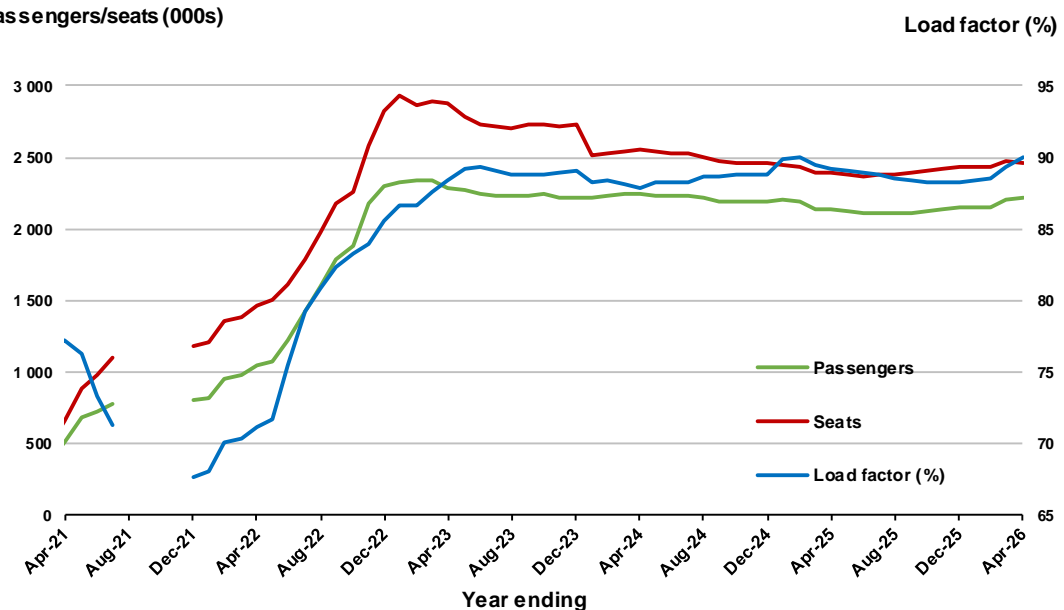
(a) August to November 2021 data not available for release.

Moving annual data

	YE Apr 2025	YE Apr 2026	% Change
Passengers carried (000s)	2 325.4	2 409.4	3.6
Seats (000s)	2 750.9	2 891.7	5.1
Load factor %	84.5	83.3	-1.2 *
Aircraft trips	16 444	17 296	5.2

* percentage point difference

Passengers/seats (000s)



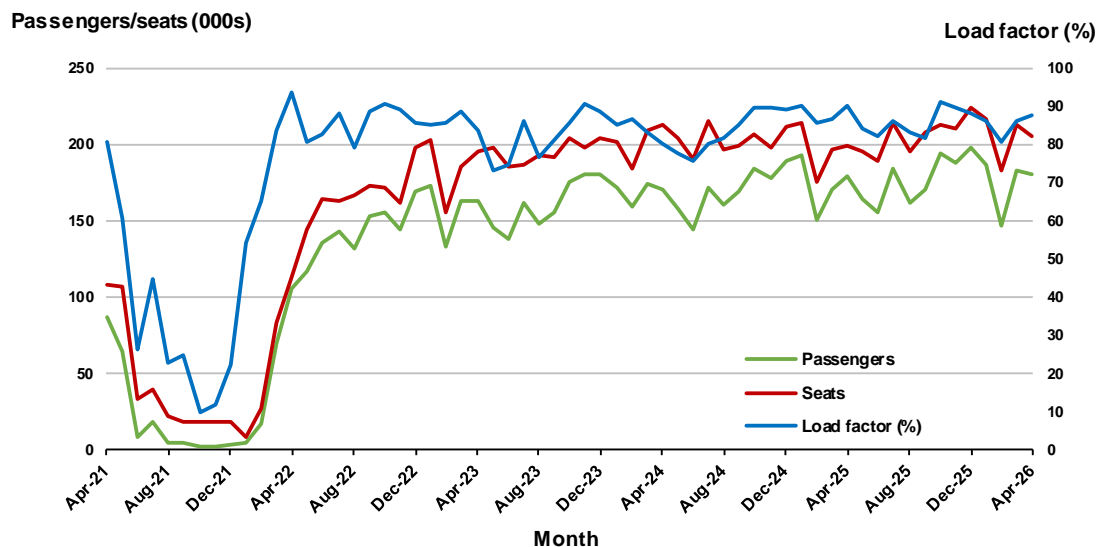
(a) August to November 2021 moving annual totals are not available for release.

7. Melbourne - Perth

Monthly data

	Apr 2025	Apr 2026	% Change
Passengers carried (000s)	179.4	179.8	0.2
Seats (000s)	199.0	205.2	3.1
Load factor %	90.1	87.6	-2.5 *
Aircraft trips	1 124	1 156	2.8

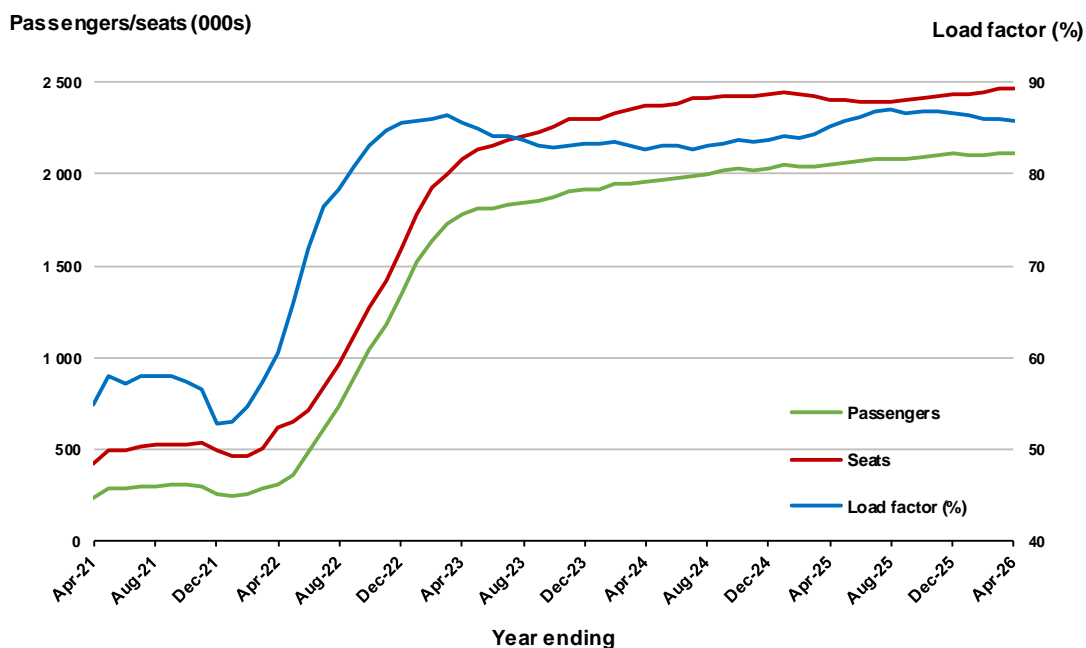
* percentage point difference



Moving annual data

	YE Apr 2025	YE Apr 2026	% Change
Passengers carried (000s)	2 048.2	2 113.1	3.2
Seats (000s)	2 406.2	2 465.4	2.5
Load factor %	85.1	85.7	0.6 *
Aircraft trips	13 291	13 778	3.7

* percentage point difference

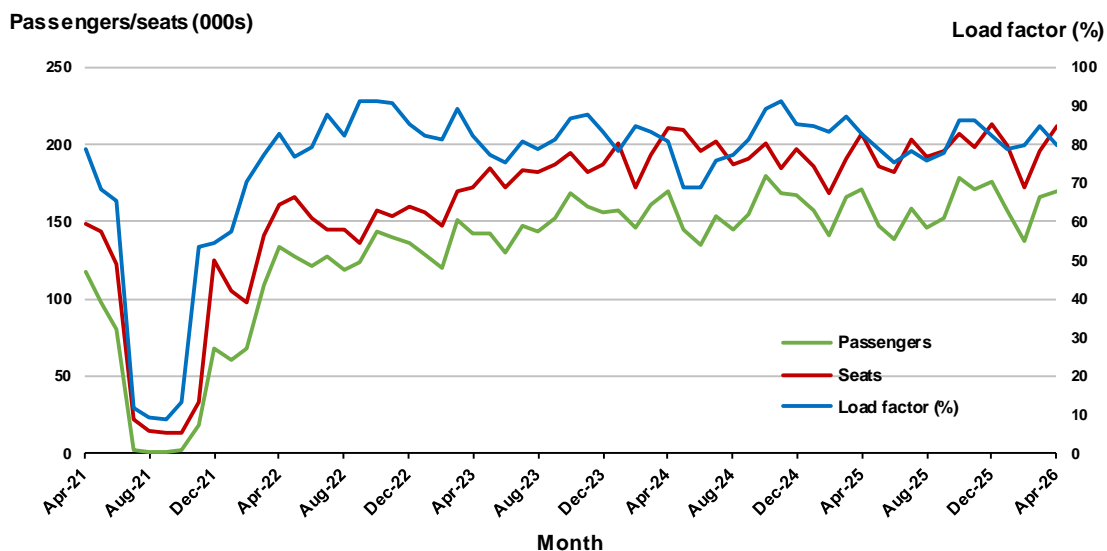


8. Adelaide - Sydney

Monthly data

	Apr 2025	Apr 2026	% Change
Passengers carried (000s)	170.9	169.9	-0.6
Seats (000s)	206.6	212.6	2.9
Load factor %	82.7	79.9	-2.8 *
Aircraft trips	1 184	1 258	6.3

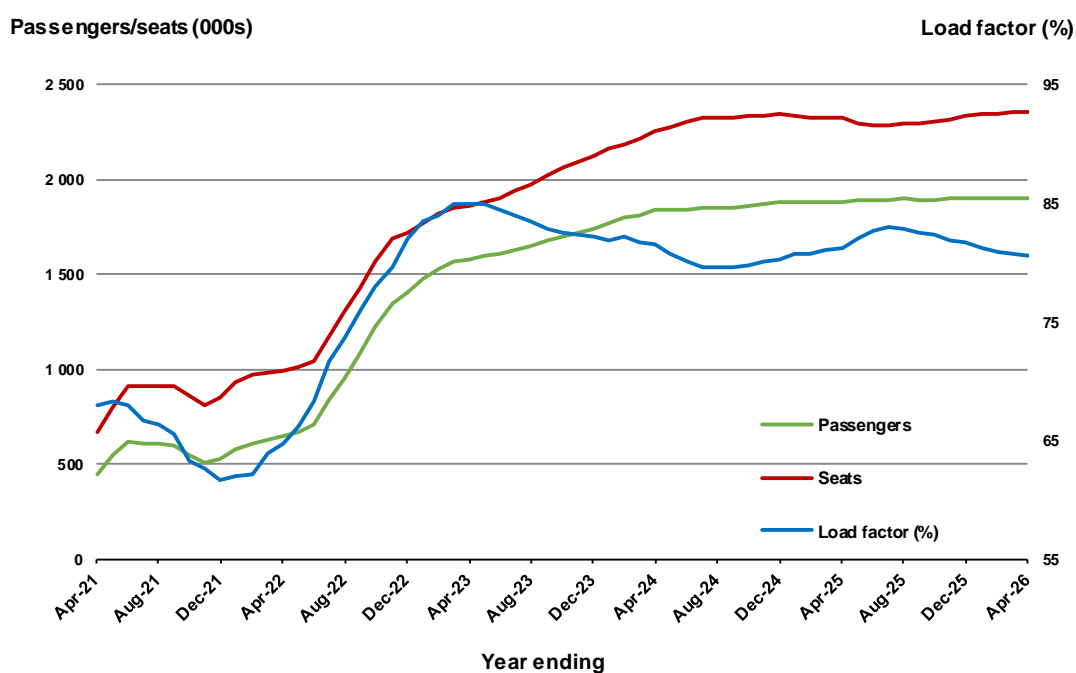
* percentage point difference



Moving annual data

	YE Apr 2025	YE Apr 2026	% Change
Passengers carried (000s)	1 884.2	1 900.8	0.9
Seats (000s)	2 321.7	2 359.9	1.6
Load factor %	81.2	80.5	-0.6 *
Aircraft trips	13 716	13 771	0.4

* percentage point difference



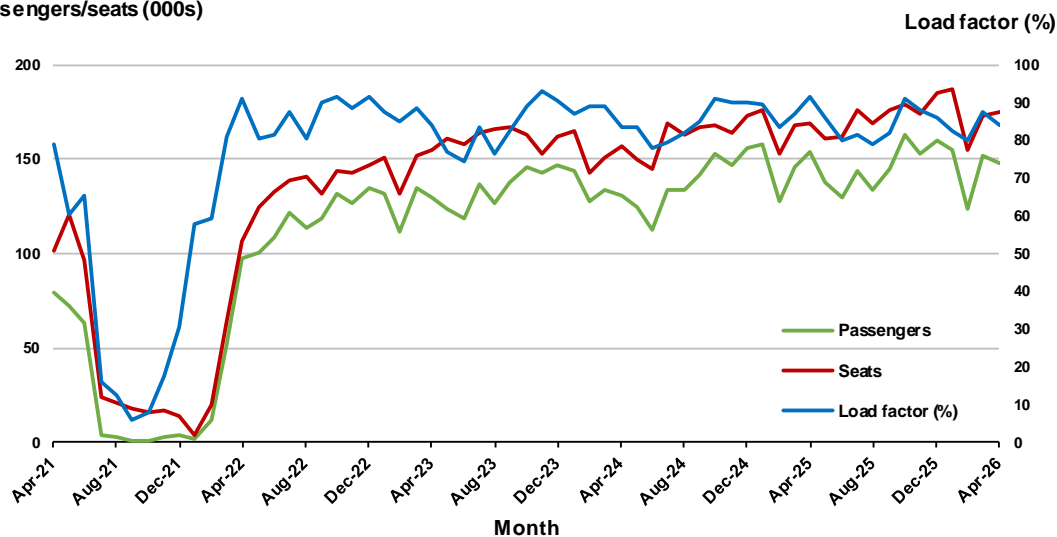
9. Perth - Sydney

Monthly data

	Apr 2025	Apr 2026	% Change
Passengers carried (000s)	154.3	147.4	- 4.5
Seats (000s)	168.7	175.1	3.7
Load factor %	91.4	84.2	-7.2 *
Aircraft trips	905	929	2.7

* percentage point difference

Passengers/seats (000s)

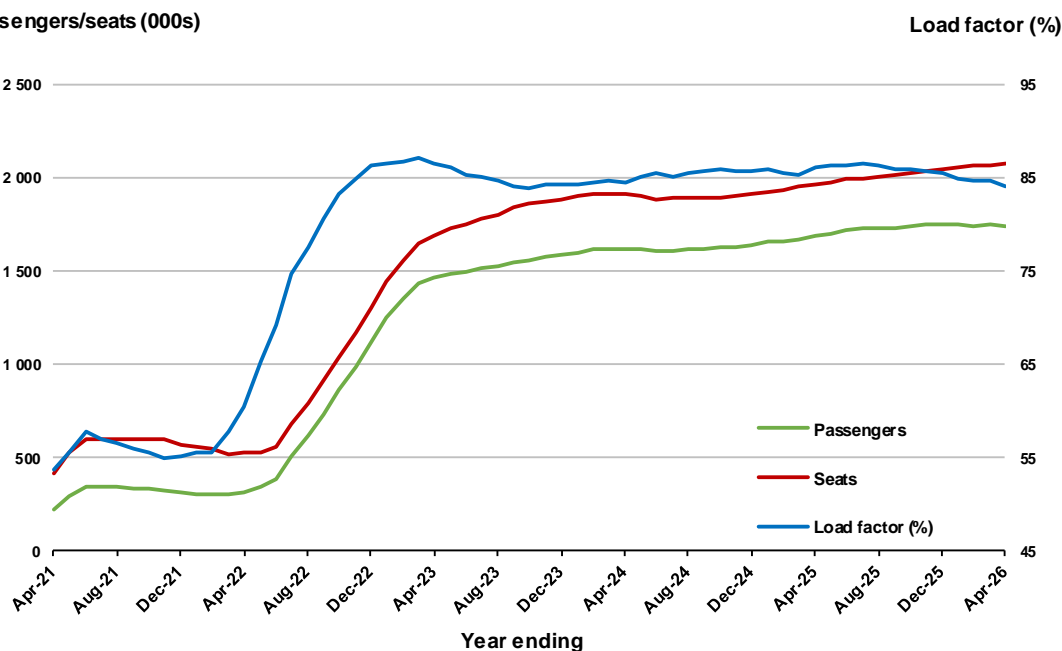


Moving annual data

	YE Apr 2025	YE Apr 2026	% Change
Passengers carried (000s)	1 688.3	1 742.4	3.2
Seats (000s)	1 962.3	2 073.1	5.6
Load factor %	86.0	84.0	-2.0 *
Aircraft trips	10 396	11 091	6.7

* percentage point difference

Passengers/seats (000s)

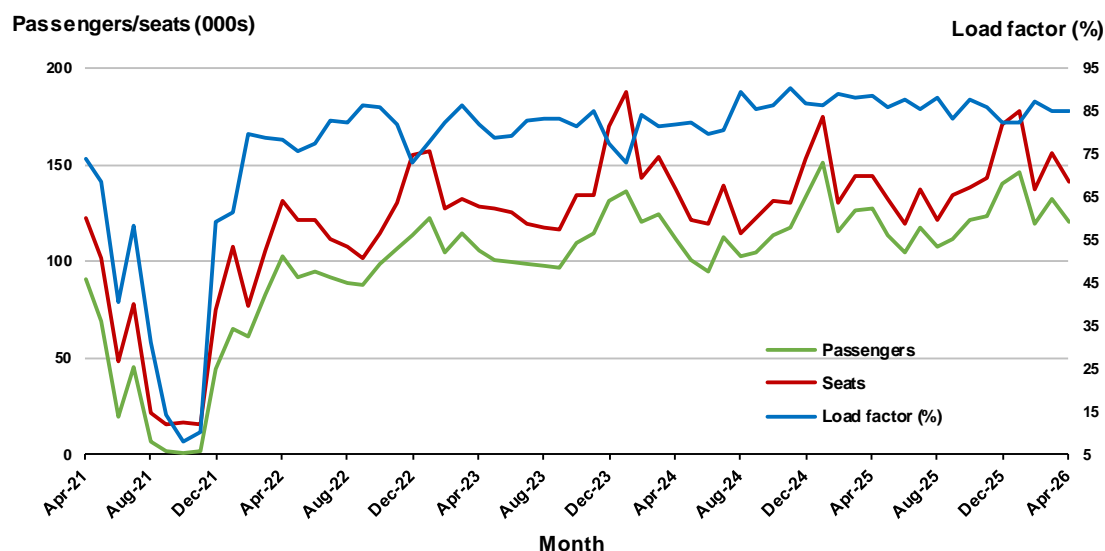


10. Hobart - Melbourne

Monthly data

	Apr 2025	Apr 2026	% Change
Passengers carried (000s)	127.3	120.0	-5.7
Seats (000s)	143.8	141.5	-1.6
Load factor %	88.5	84.8	-3.7 *
Aircraft trips	837	822	-1.8

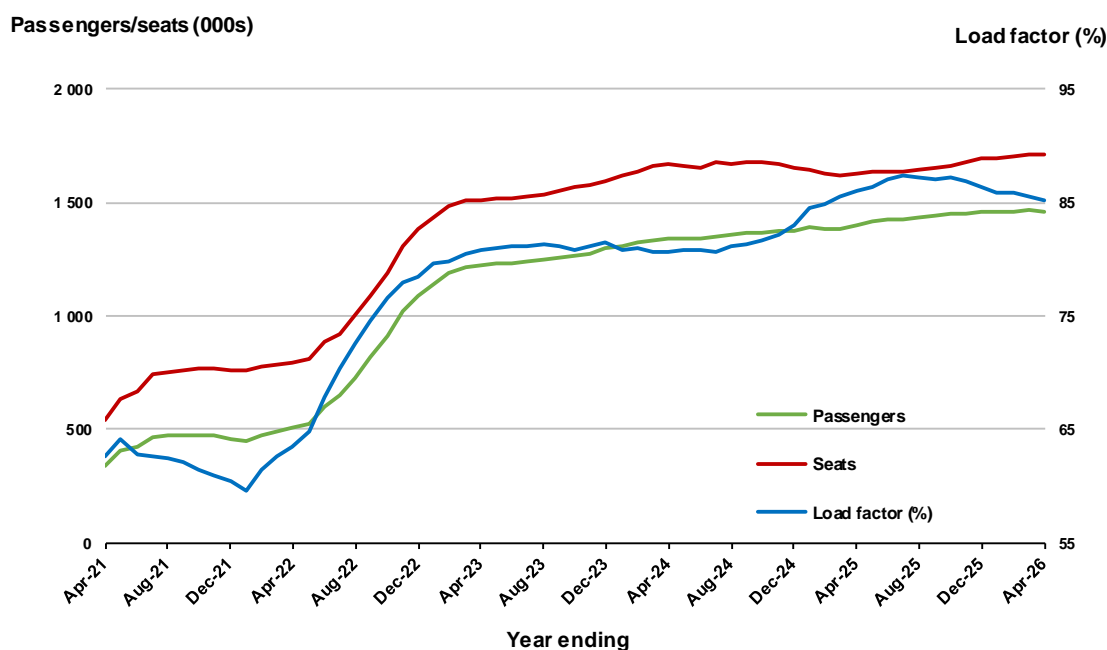
* percentage point difference



Moving annual data

	YE Apr 2025	YE Apr 2026	% Change
Passengers carried (000s)	1 400.4	1 457.8	4.1
Seats (000s)	1 626.3	1 710.1	5.2
Load factor %	86.1	85.3	-0.9 *
Aircraft trips	9 554	9 770	2.3

* percentage point difference



TOP FIFTY REGIONAL AIRPORTS

Table 10: Top fifty regional airports (000s) — passenger movements, monthly

Airport	Apr 2025	Apr 2026	% Change
1 Cairns	353.3	337.7	-4.4
2 Hobart	242.8	237.2	-2.3
3 Townsville	134.5	139.9	4.0
4 Darwin	135.2	132.4	-2.0
5 Launceston	119.3	124.9	4.7
6 Newcastle	100.4	102.7	2.3
7 Mackay	76.7	76.8	0.1
8 Karratha	58.5	64.5	10.2
9 Rockhampton	52.3	53.3	2.0
10 Proserpine	45.2	50.0	10.6
11 Ballina	50.7	49.9	-1.5
12 Port Hedland	42.2	45.5	7.7
13 Hamilton Island	43.0	39.8	-7.4
14 Kalgoorlie	31.6	38.3	21.5
15 Newman	38.0	37.2	-2.2
16 Broome	36.5	36.2	-0.8
17 Alice Springs	32.2	31.8	-1.3
18 Ayers Rock	29.9	31.1	3.9
19 Coffs Harbour	20.9	21.8	4.0
20 Hervey Bay	17.6	19.3	9.9
21 Paraburdoo	22.7	19.0	-16.2
22 Mount Isa	19.3	18.9	-1.6
23 Gladstone	17.0	18.2	7.6
24 Albury	18.5	18.1	-2.1
25 Wagga Wagga	18.1	18.0	-0.1
26 Dubbo	16.6	18.0	8.4
27 Port Macquarie	15.6	16.3	4.1
28 Emerald	15.5	16.0	3.4
29 Mildura	15.8	15.2	-3.6
30 Port Lincoln	13.7	14.0	2.1
31 Tamworth	12.4	12.8	3.5
32 Devonport	13.0	12.3	-5.8
33 Orange	9.7	12.2	24.8
34 Bundaberg	10.9	11.6	6.5
35 Geraldton	10.6	11.0	3.1
36 Kununurra	11.4	10.5	-7.7
37 Armidale	9.1	10.2	11.3
38 Thursday Island	10.4	9.5	-8.6
39 Olympic Dam	8.5	8.8	3.2
40 Weipa	8.4	8.7	3.7
41 Busselton	8.0	8.6	7.7
42 Moranbah	8.4	7.4	-11.8
43 Burnie	7.6	7.1	-6.1
44 Merimbula	5.8	6.3	8.2
45 Learmonth	11.1	6.0	-45.7
46 Gove	6.6	6.0	-9.5
47 Mount Gambier	5.8	5.9	1.8
48 Griffith	6.2	5.6	-10.5
49 Albany	5.3	5.5	5.0
50 Roma	5.2	5.5	4.8
Total top 50 regional airports	2 008.0	2 013.5	0.3
Total regional airports	2 131.7	2 133.3	0.1
Total domestic network	10 162.5	10 235.6	0.7

Note: Airport passenger movement numbers are the sum of passenger arrivals and departures at each airport. Regional airports are defined as airports which are, according to Australian Statistical Geography Standard (ASGS), not based in Major Cities.

Table 11: Top fifty regional airports (000s) — passenger movements, annual

Airport	YE Apr 2025	YE Apr 2026	% Change
1 Cairns	4 107.3	4 144.8	0.9
2 Hobart	2 770.3	2 897.5	4.6
3 Townsville	1 639.6	1 658.6	1.2
4 Darwin	1 616.0	1 648.8	2.0
5 Launceston	1 419.1	1 474.4	3.9
6 Newcastle	1 182.2	1 247.1	5.5
7 Mackay	895.9	941.2	5.1
8 Karratha	643.0	729.1	13.4
9 Rockhampton	642.7	646.5	0.6
10 Ballina	616.8	582.2	-5.6
11 Proserpine	507.3	572.5	12.9
12 Port Hedland	490.5	514.0	4.8
13 Hamilton Island	489.6	483.6	-1.2
14 Broome	444.0	456.2	2.7
15 Newman	421.3	445.7	5.8
16 Kalgoorlie	370.8	426.6	15.0
17 Alice Springs	360.9	366.2	1.5
18 Ayers Rock	338.6	348.8	3.0
19 Coffs Harbour	251.8	266.2	5.7
20 Paraburdoo	280.0	235.3	-16.0
21 Mount Isa	239.2	233.0	-2.6
22 Hervey Bay	200.6	226.9	13.1
23 Albury	225.8	226.5	0.3
24 Wagga Wagga	211.0	224.6	6.4
25 Gladstone	222.3	218.8	-1.6
26 Dubbo	206.0	215.0	4.4
27 Port Macquarie	191.6	197.5	3.1
28 Emerald	188.0	189.9	1.0
29 Mildura	191.9	185.4	-3.4
30 Port Lincoln	167.4	168.6	0.7
31 Tamworth	160.9	157.5	-2.1
32 Devonport	131.9	149.6	13.5
33 Bundaberg	141.3	141.8	0.4
34 Kununurra	138.7	138.0	-0.5
35 Geraldton	123.9	130.6	5.4
36 Orange	112.2	129.0	15.0
37 Thursday Island	120.7	115.7	-4.1
38 Armidale	101.0	111.3	10.2
39 Olympic Dam	101.5	104.1	2.5
40 Learmonth	110.4	101.3	-8.2
41 Weipa	94.4	101.1	7.1
42 Busselton	94.0	99.5	5.9
43 Moranbah	109.7	94.6	-13.8
44 Gove	90.5	84.6	-6.5
45 Burnie	79.7	82.5	3.5
46 Griffith	72.7	75.5	3.8
47 Merimbula	67.7	74.5	10.1
48 Mount Gambier	70.9	73.0	2.9
49 Albany	67.3	66.4	-1.4
50 Roma	61.2	62.8	3.6
Total top 50 regional airports	23 581.8	24 264.9	2.9
Total regional airports	24 996.2	25 660.1	2.7
Total domestic network	118 506.5	121 636.5	2.6

Note: Airport passenger movement numbers are the sum of passenger arrivals and departures at each airport. Regional airports are defined as airports which are, according to Australian Statistical Geography Standard (ASGS), not based in Major Cities.

DOMESTIC CHARTER ACTIVITY

Table 12: Charter passengers carried and aircraft trips - monthly activity (000s)

	Apr 2025	Apr 2026	% Change
Total domestic charter passengers	371.8	394.1	6.0
Total domestic charter aircraft trips	6.4	6.4	-0.4

Note: Helicopter, joyflights and sightseeing charter flights not included.

Table 13: Charter passengers carried and aircraft trips - annual activity (000s)

	YE Apr 2025	YE Apr 2026	% Change
Total domestic charter passengers	4 324.1	4 496.8	4.0
Total domestic charter aircraft trips	74.0	76.2	2.9

Note: Helicopter, joyflights and sightseeing charter flights not included.

Table 14: Domestic airports - charter activity - monthly (000s)

	Apr 2025	Apr 2026	% Change
Total domestic charter passenger movements	743.5	788.2	6.0
Total domestic charter aircraft movements	12.8	12.8	-0.4
Perth airport charter passenger movements	264.5	282.6	6.8
Perth airport charter aircraft movements	3.8	4.1	5.8

Note: Helicopter, joyflights and sightseeing charter flights not included.

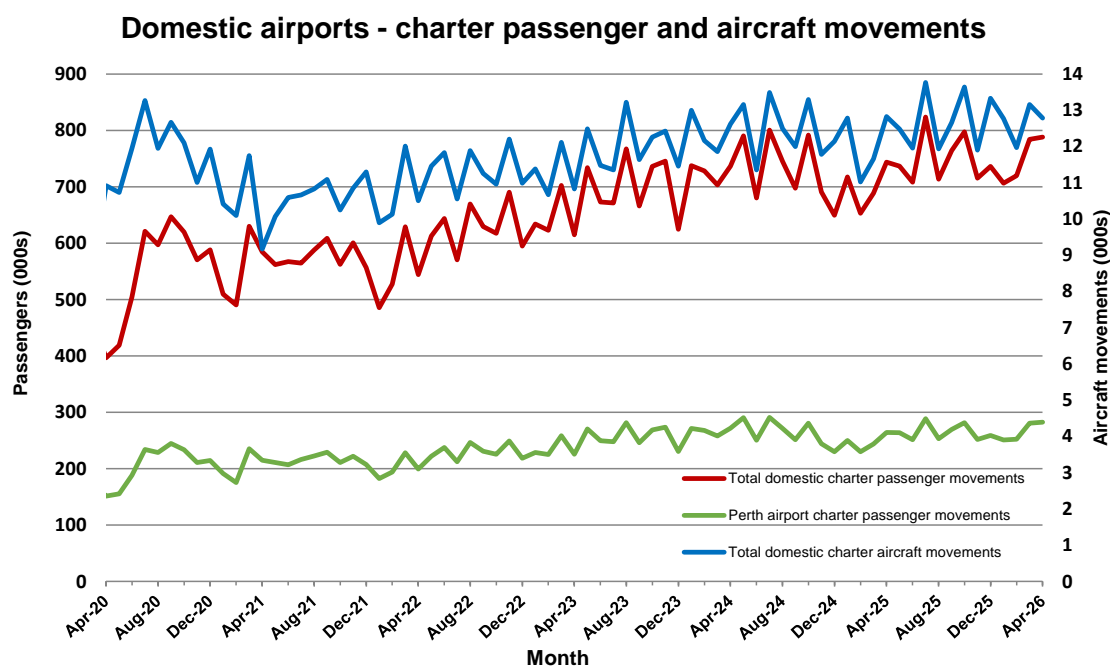
Charter passenger and aircraft movement numbers are the sum of arrivals and departures at each airport.

Table 15: Domestic airports - charter activity - annual (000s)

	YE Apr 2025	YE Apr 2026	% Change
Total domestic charter passenger movements	8 648.2	8 993.5	4.0
Total domestic charter aircraft movements	148.0	152.4	2.9
Perth airport charter passenger movements	3 098.4	3 186.0	2.8
Perth airport charter aircraft movements	45.7	46.1	0.9

Note: Helicopter, joyflights and sightseeing charter flights not included.

Charter passenger and aircraft movement numbers are the sum of arrivals and departures at each airport.



DEFINITIONS

Aircraft Trips	The number of flight stages. A return flight counts as two aircraft trips.
Airport Movements	Airport movements (passenger and cargo) are measured once on arrival and once on departure. Each domestic trip generates two movements at airports. For example, a trip from Melbourne to Sydney will be counted twice, as a departure at Melbourne and as an arrival at Sydney. At the national level, the sum of all domestic airport traffic will therefore be equal to twice the number of trips undertaken.
Available Seat Kilometres (ASKs)	Calculated by multiplying the number of seats available on each flight stage, by the distance in kilometres between the ports. The distances used are Great Circle Distances.
City-Pair	The ports shown make up the city-pair route. Passenger movements shown for a city pair reflect total traffic in both directions.
Flight Stage	The operation of an aircraft from take-off to landing.
Load Factor	The total revenue passenger kilometres performed as a percentage of the total available seat kilometres.
Passengers Carried	Revenue passengers carried.
Regular Public Transport Services (RPT)	All air service operations in which aircraft are available for the transport of members of the public and are conducted in accordance with fixed schedules. It does not include charter or other non-scheduled operations.
Revenue Passengers	All passengers paying any fare. Frequent flyer redemption travellers are regarded as revenue passengers.
Revenue Passenger Kilometres (RPKs)	Calculated by multiplying the number of revenue passengers travelling on each flight stage, by the distance in kilometres between the ports. The distances used are Great Circle Distances.
Traffic on board by stages (TOB)	The total of all traffic (revenue passengers) on each flight stage between two directly connected airports.
..	Not available for confidentiality or other reasons.
NA	Not applicable.