



Australian Government

Department of Infrastructure, Transport,
Regional Development, Communications, Sport and the Arts

Bureau of Infrastructure and Transport Research Economics
STATISTICAL REPORT



Aviation

**Domestic airline on time performance
March 2026**

The Department of Infrastructure, Transport, Regional Development, Communications, Sport and the Arts acknowledges the Traditional Custodians of country throughout Australia and their connections to land, sea and community.

We pay our respect to their Elders past and present and extend that respect to all Aboriginal and Torres Strait Islander people.

© Commonwealth of Australia 2026

ISSN: 1832-0759

BITRE reference: 2026-038

Ownership of intellectual property rights in this publication

Unless otherwise noted, copyright (and any other intellectual property rights, if any) in this publication is owned by the Commonwealth of Australia (referred to below as the Commonwealth).

Disclaimer

The material contained in this publication is made available on the understanding that the Commonwealth is not providing professional advice, and that users exercise their own skill and care with respect to its use, and seek independent advice if necessary.

The Commonwealth makes no representations or warranties as to the contents or accuracy of the information contained in this publication. To the extent permitted by law, the Commonwealth disclaims liability to any person or organisation in respect of anything done, or omitted to be done, in reliance upon information contained in this publication.

Creative Commons licence

With the exception of (a) the Coat of Arms; and (b) the Department of Infrastructure, Transport, Regional Development, Communications, Sport and the Arts' photos and graphics, copyright in this publication is licensed under a Creative Commons Attribution 4.0 Australia Licence.

Creative Commons Attribution 4.0 Australia Licence is a standard form licence agreement that allows you to copy, communicate and adapt this publication provided that you attribute the work to the Commonwealth and abide by the other licence terms. A summary of the licence terms is available from <https://creativecommons.org/licenses/by/4.0/>. The full licence terms are available from <https://creativecommons.org/licenses/by/4.0/legalcode.en>.

Use of the Coat of Arms

The Department of the Prime Minister and Cabinet sets the terms under which the Coat of Arms is used. Please refer to the Department's Commonwealth Coat of Arms and Government branding web page <http://www.dpmc.gov.au/guidelines/index.cfm#brand> and, in particular, the Guidelines on the use of the Commonwealth Coat of Arms publication.

An appropriate citation for this report is:

Bureau of Infrastructure and Transport Research Economics (BITRE), 2026, Domestic airline on time performance, Statistical Report, BITRE, Canberra ACT.

Contact us

All other rights are reserved, including in relation to any departmental logos or trade marks which may exist. For enquiries regarding the licence and any use of this publication, please contact:

Bureau of Infrastructure and Transport Research Economics (BITRE)
Department of Infrastructure, Transport, Regional Development, Communications, Sport and the Arts
GPO Box 501, Canberra ACT 2601, Australia
Telephone: (international) +61 2 6136 8687
Email: bitre@infrastructure.gov.au
Website: www.bitre.gov.au

Inquiries

Should you require additional information about the statistics contained in this publication:

Telephone: (02) 6136 7250

Email: AVSTATS@infrastructure.gov.au

Website: <http://www.bitre.gov.au/statistics/aviation/otphome.aspx>

Foreword

The Bureau of Infrastructure and Transport Research Economics (BITRE) monitors the punctuality and reliability of major domestic airlines operating between Australian airports. The purpose of this is to allow for evaluation of overall industry and individual airline performance, so that consumers of air travel can make informed decisions.

The following domestic airlines currently report this information monthly to the BITRE: Hinterland, Jetstar, Qantas, QantasLink, Rex Airlines, Skytrans Australia (formerly SmartLynx Australia), Virgin Australia and Virgin Australia Regional Airlines.

Information presented in this report is for Australian domestic routes for which the passenger load averaged 8,000 or more passengers per month over the previous six months and where two or more airlines operated in competition on those routes. Data are presented for 59 routes in March 2026. Over time, routes which meet these criteria change as airline networks and traffic levels vary. Participating airlines report their overall monthly network performance where this is possible.

Total industry figures encompass all services operated by reporting airlines only. These airlines collectively carried over 98% of total domestic passengers (regular public transport only) in 2025.

The method of capturing on time performance varies between airlines utilising different recording systems. Jetstar and Qantas jet aircraft use Aircraft Communication Addressing and Reporting System (ACARS) to electronically measure on time performance. Rex Airlines, Virgin Australia, Virgin Australia Regional Airlines and the Qantas non-jet fleet record on time performance manually using records from pilots, gate agents and/or ground crews.

After initial data is collected, aggregate reports are reviewed by participating airlines prior to publication.

Reports and detailed time series data in Microsoft Excel spreadsheet format are available from the BITRE website at: <http://www.bitre.gov.au/statistics/aviation/otphome.aspx>

Contents

	Page
Industry performance	1
Individual routes	10
Airports.....	22
Definitions	28
Airlines and Reporting	29

Industry performance

For March 2026, on time performance over all routes operated by participating airlines (Hinterland, Jetstar, Qantas, QantasLink, Rex Airlines, Skytrans Australia (formerly SmartLynx Australia), Virgin Australia and Virgin Australia Regional Airlines) averaged 77.0% for on time arrivals and 78.2% for on time departures. The cancellation rate for the month was 2.7%. The equivalent figures for March 2025 were 80.2% for on time arrivals, 80.7% for on time departures and 5.0% for cancellations.

This month's on time arrivals figure was lower than the long term average (average over the period of OTP reporting starting in November 2003) performance for all routes (80.5%) and the on time departures figure was also lower than the long term average (81.6%). The rate of cancellations was higher than the long term average of 2.2%.

On time arrivals

The Qantas network (Qantas and QantasLink combined operations) recorded 80.1% for on time arrivals while the Virgin Australia network (Virgin Australia and Virgin Australia Regional Airlines combined operations) recorded 77.7%. Hinterland achieved the highest on time arrivals at 84.3%, followed by QantasLink at 82.0%, Virgin Australia at 77.8%, Qantas at 76.5%, Virgin Australia Regional Airlines at 73.2%, Jetstar at 72.7%, Skytrans Australia at 69.8% and Rex Airlines at 66.9%.

On time departures

The Qantas network recorded 81.9% for on time departures while the Virgin Australia network recorded 78.7%. Hinterland achieved the highest level of on time departures for March 2026 at 88.6%, followed by QantasLink at 82.6%, Qantas at 80.7%, Virgin Australia at 78.8%, Skytrans Australia at 73.0%, Virgin Australia Regional Airlines at 71.7%, Rex Airlines at 70.7% and Jetstar at 70.1%.

Cancellations

Skytrans Australia recorded the highest percentage of cancellations at 7.3% during the month. The second highest cancellation rate was from Virgin Australia Regional Airlines at 4.2%, followed by Rex Airlines at 4.0%, QantasLink at 3.8%, Qantas at 2.1%, Jetstar at 2.0%, Virgin Australia at 1.7% and Hinterland at 1.3%.

Routes

Airlines' on time performance varies across the routes they serve. Individual route data by specific airline for 59 routes (118 sectors when counting both directions of flights) are shown on pages 10-21.

Of the 59 routes which met the criteria¹ for on time performance reporting in March 2026, the Brisbane-Mount Isa sector had the highest percentage of on time arrivals (95.7%), while the

1. Australian domestic routes for which the passenger load averaged 8,000 or more passengers per month over the previous six months and where two or more airlines operated in competition on those routes.

Perth-Newman sector had the highest percentage of on time departures (96.4%). The Hamilton Island-Sydney sector had the lowest percentage of on time arrivals (42.6%) and the lowest percentage of on time departures (50.0%).

Cancellations were highest on the Canberra-Sydney sector at 8.6%, followed by the Port Lincoln-Adelaide sector at 8.3%, the Adelaide-Port Lincoln sector at 7.9%, the Sydney-Canberra sector at 7.6%, the Devonport-Melbourne sector at 7.2%, the Melbourne-Devonport and Gladstone-Brisbane sectors at 6.5%, and the Dubbo-Sydney sector at 6.1%.

For the month of March 2026 there were 26 out of the 118 route sectors (from the 59 routes) that had zero cancellations: Adelaide-Alice Springs, Adelaide-Gold Coast, Adelaide-Perth, Alice Springs-Adelaide, Brisbane-Cairns, Brisbane-Darwin, Brisbane-Hamilton Island, Brisbane-Hobart, Brisbane-Launceston, Brisbane-Perth, Canberra-Gold Coast, Darwin-Brisbane, Gold Coast-Adelaide, Gold Coast-Canberra, Hamilton Island-Brisbane, Hamilton Island-Sydney, Hobart-Brisbane, Launceston-Brisbane, Melbourne-Cairns, Melbourne-Darwin, Perth-Adelaide, Perth-Broome, Perth-Darwin, Sydney-Hamilton Island, Ayers Rock-Melbourne, Melbourne-Ayers Rock.

Airports

Mount Isa Airport recorded the highest percentage of on time arrivals (95.7%), while Mackay Airport had the highest percentage of on time departures (92.3%). Mildura Airport recorded the lowest percentage of on time arrivals (57.4%) while Hamilton Island Airport had the lowest percentage of on time departures (57.1%). These figures only refer to reported routes and do not cover all flights at these airports.

Table 1 On time performance for March 2026 — Total Industry

	<i>Sectors</i>		<i>Arrivals On Time</i>		<i>Departures On Time</i>		<i>Cancellations</i>	
	<i>Scheduled</i>	<i>Flown</i>	<i>No.</i>	<i>%</i>	<i>No.</i>	<i>%</i>	<i>No.</i>	<i>%</i>
Hinterland	1,583	1,563	1,317	84.3	1,385	88.6	20	1.3
Jetstar	7,832	7,673	5,575	72.7	5,376	70.1	159	2.0
Qantas - all QF designated services	20,273	19,621	15,708	80.1	16,079	81.9	652	3.2
Rex Airlines	4,557	4,376	2,929	66.9	3,094	70.7	181	4.0
Skytrans Australia	439	407	284	69.8	297	73.0	32	7.3
Virgin Australia - all VA designated services	12,430	12,209	9,491	77.7	9,607	78.7	221	1.8
All Airlines	47,114	45,849	35,304	77.0	35,838	78.2	1,265	2.7
Individual operating entities								
Qantas	7,201	7,049	5,394	76.5	5,690	80.7	152	2.1
QantasLink	13,072	12,572	10,314	82.0	10,389	82.6	500	3.8
Virgin Australia	12,286	12,071	9,390	77.8	9,508	78.8	215	1.7
Virgin Australia Regional Airlines	144	138	101	73.2	99	71.7	6	4.2

Total airline network data (including routes not shown in this report).

Airlines’ on time performance varies across the routes they serve. Individual route data by specific airline are shown on page 10 and onwards.

Table 2 Top ten routes for on time performance for March 2026 (participating airlines only)

<i>Arrivals</i>		<i>Departures</i>	
<i>Route</i>	<i>On Time (%)</i>	<i>Route</i>	<i>On Time (%)</i>
Brisbane-Mount Isa	95.7	Perth-Newman	96.4
Mount Isa-Brisbane	95.7	Brisbane-Mount Isa	95.7
Canberra-Adelaide	94.6	Adelaide-Canberra	94.6
Gold Coast-Canberra	93.2	Canberra-Adelaide	93.0
Perth-Newman	92.9	Mackay-Brisbane	92.3
Brisbane-Darwin	92.7	Mount Isa-Brisbane	91.4
Perth-Broome	92.5	Emerald-Brisbane	91.3
Adelaide-Canberra	92.3	Townsville-Brisbane	91.3
Broome-Perth	91.7	Brisbane-Townsville	89.2
Mackay-Brisbane	91.7	Perth-Kalgoorlie	89.0

Table 3 Top ten airports for on time performance for March 2026 (participating airlines and reported routes only)

<i>Arrivals</i>		<i>Departures</i>	
<i>Airport</i>	<i>On Time (%)</i>	<i>Airport</i>	<i>On Time (%)</i>
Mount Isa	95.7	Mackay	92.3
Newman	92.9	Mount Isa	91.4
Broome	92.5	Emerald	91.3
Emerald	88.7	Townsville	91.3
Townsville	87.6	Newman	88.7
Karratha	87.3	Broome	88.0
Gladstone	86.3	Gladstone	87.4
Mackay	86.1	Rockhampton	86.2
Kalgoorlie	84.6	Karratha	85.5
Alice Springs	84.1	Perth	83.6

Total industry on time performance

Figure 1 On time performance (by month from Mar 2023)—Total Industry

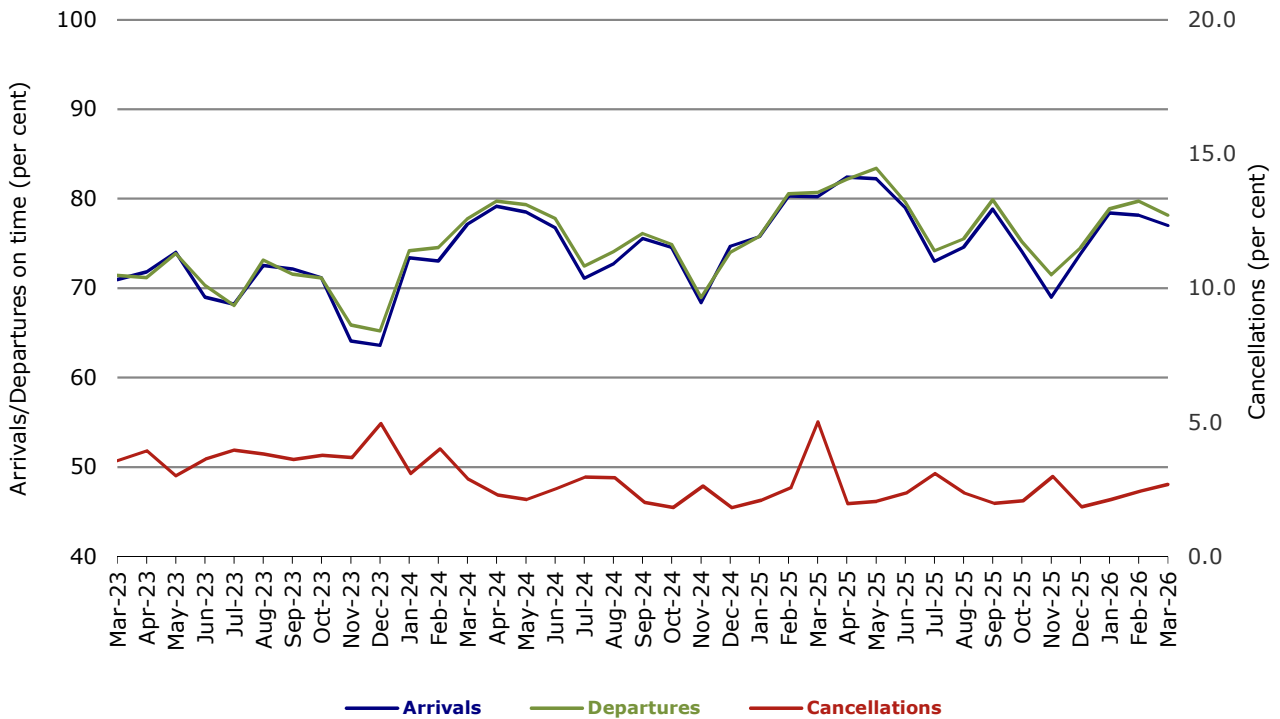


Figure 2 Arrivals on time (by month from Mar 2025)

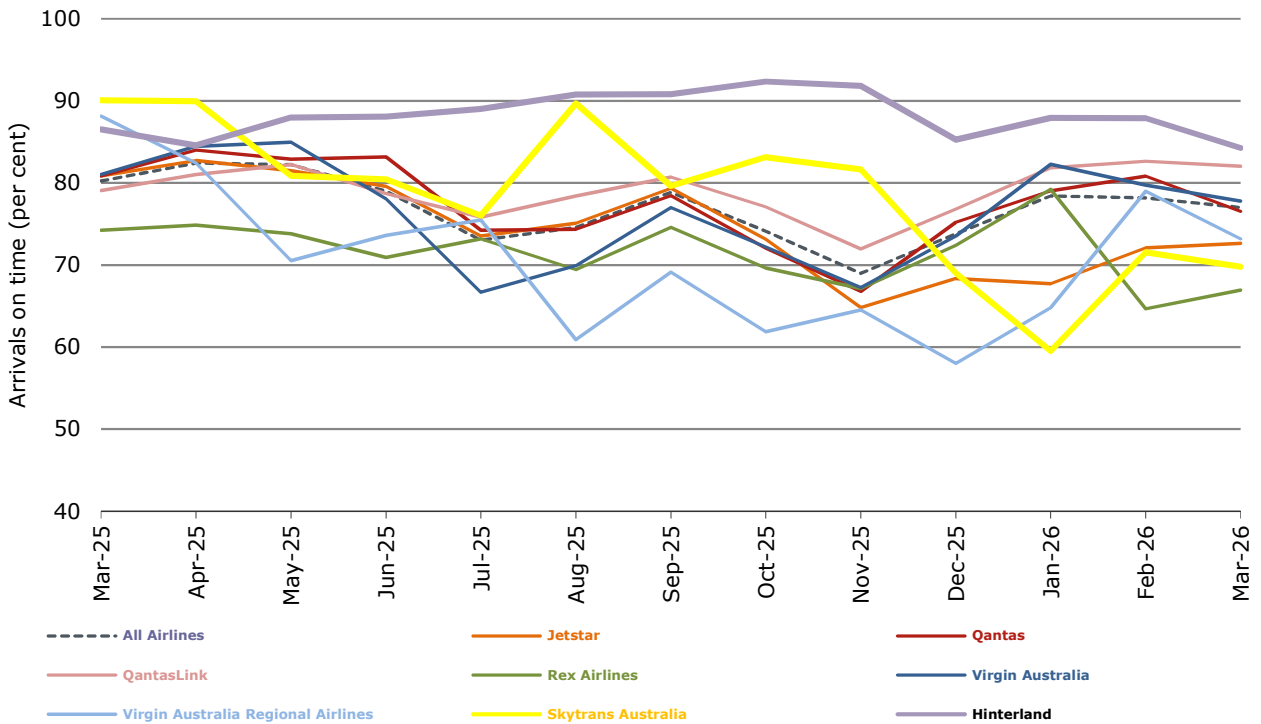


Figure 3 Departures on time (by month from Mar 2025)

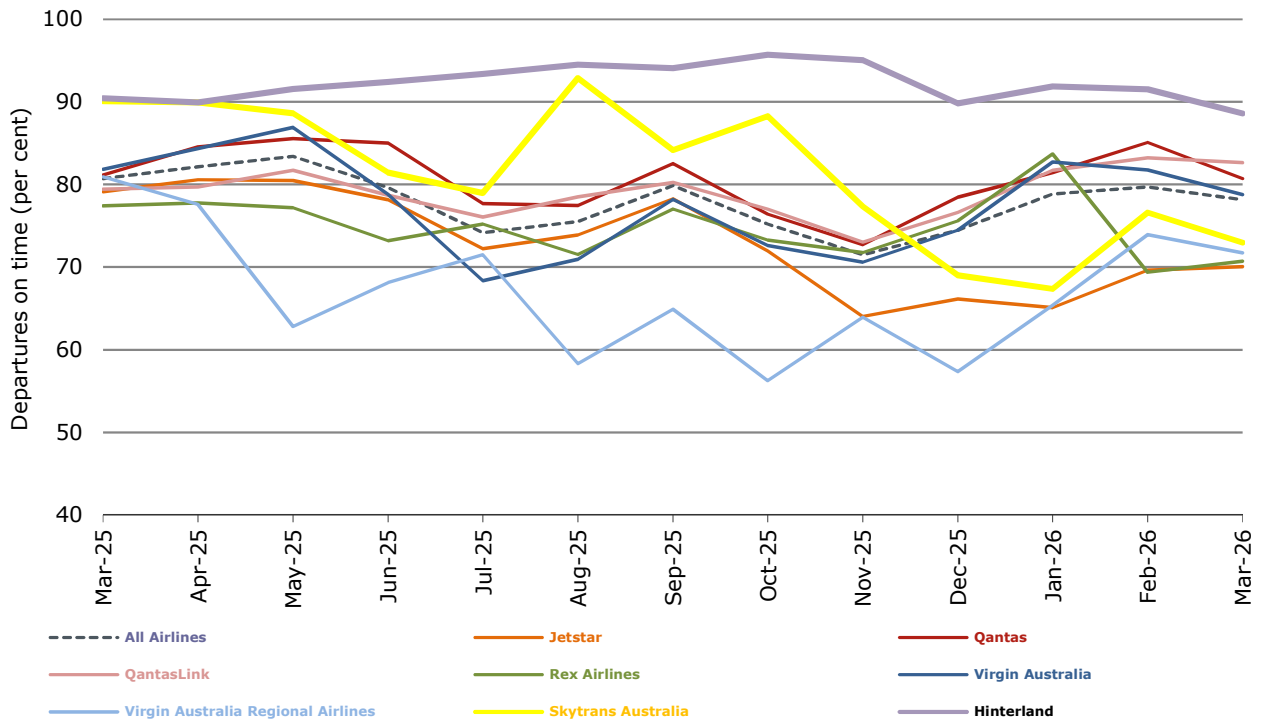
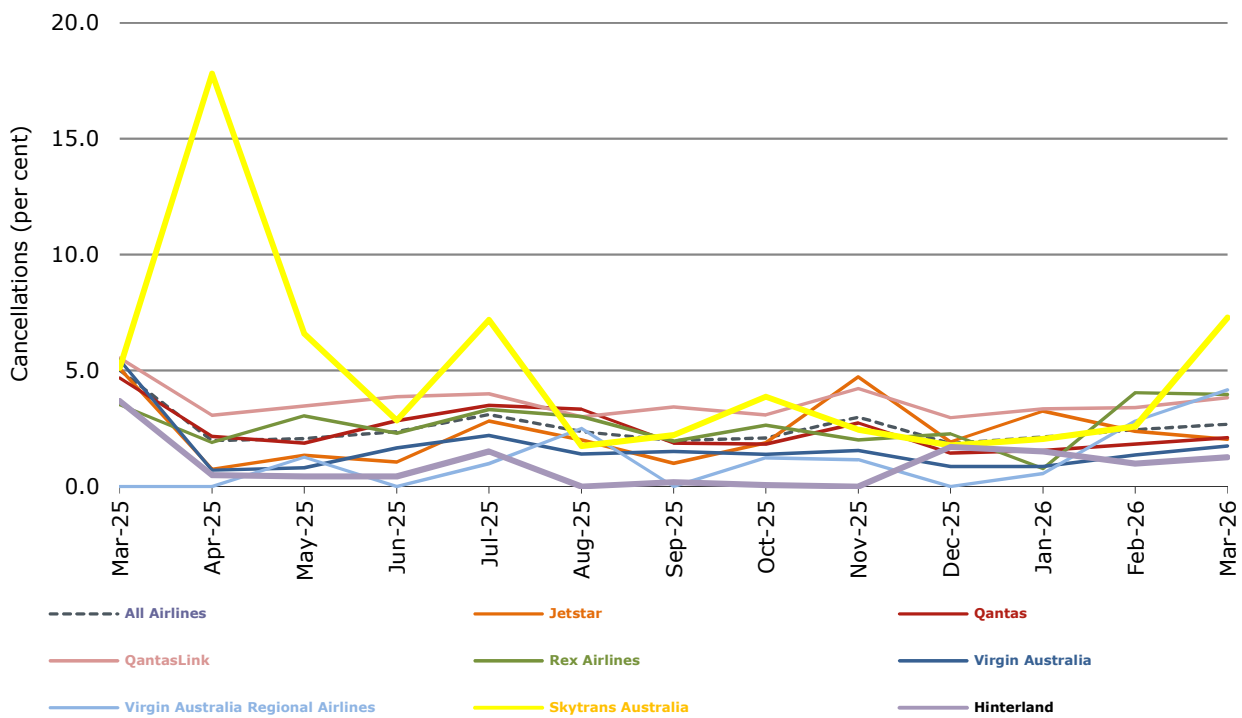


Figure 4 Cancellations (by month from Mar 2025)



Airlines on time performance

Figure 5 On time performance (by month from Mar 2023)—Jetstar

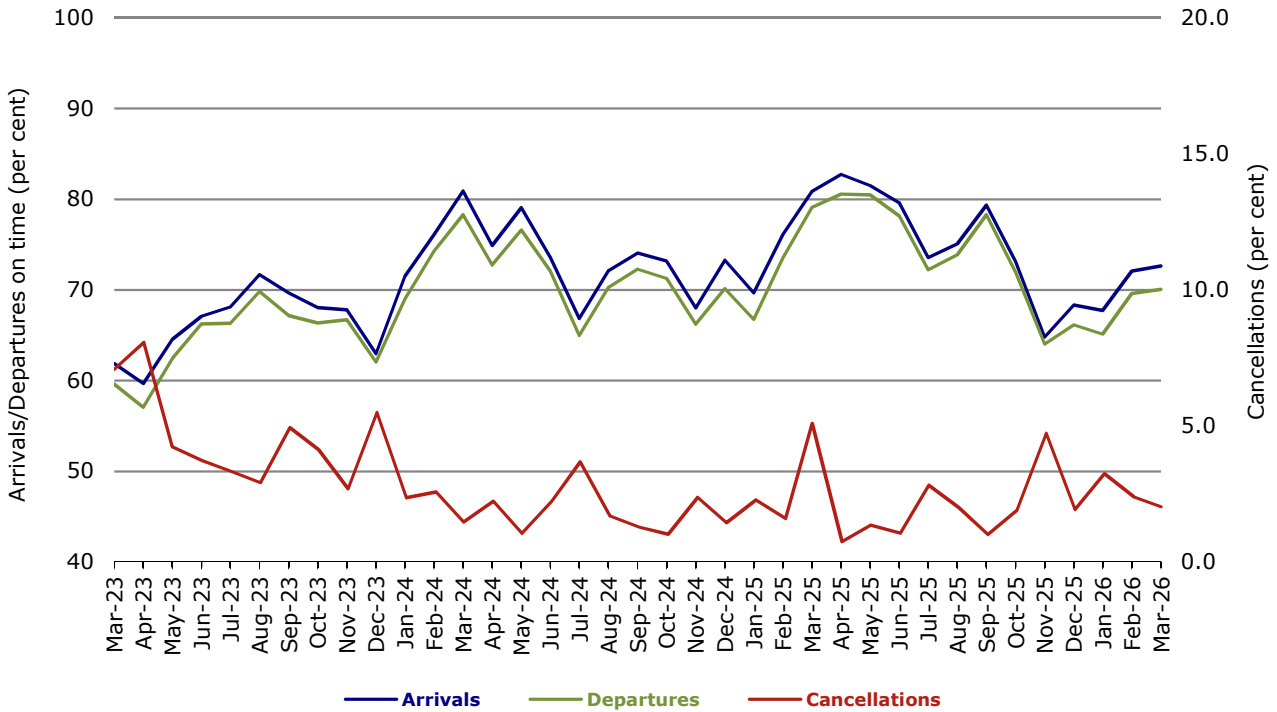


Figure 6 On time performance (by month from Mar 2023)—Qantas

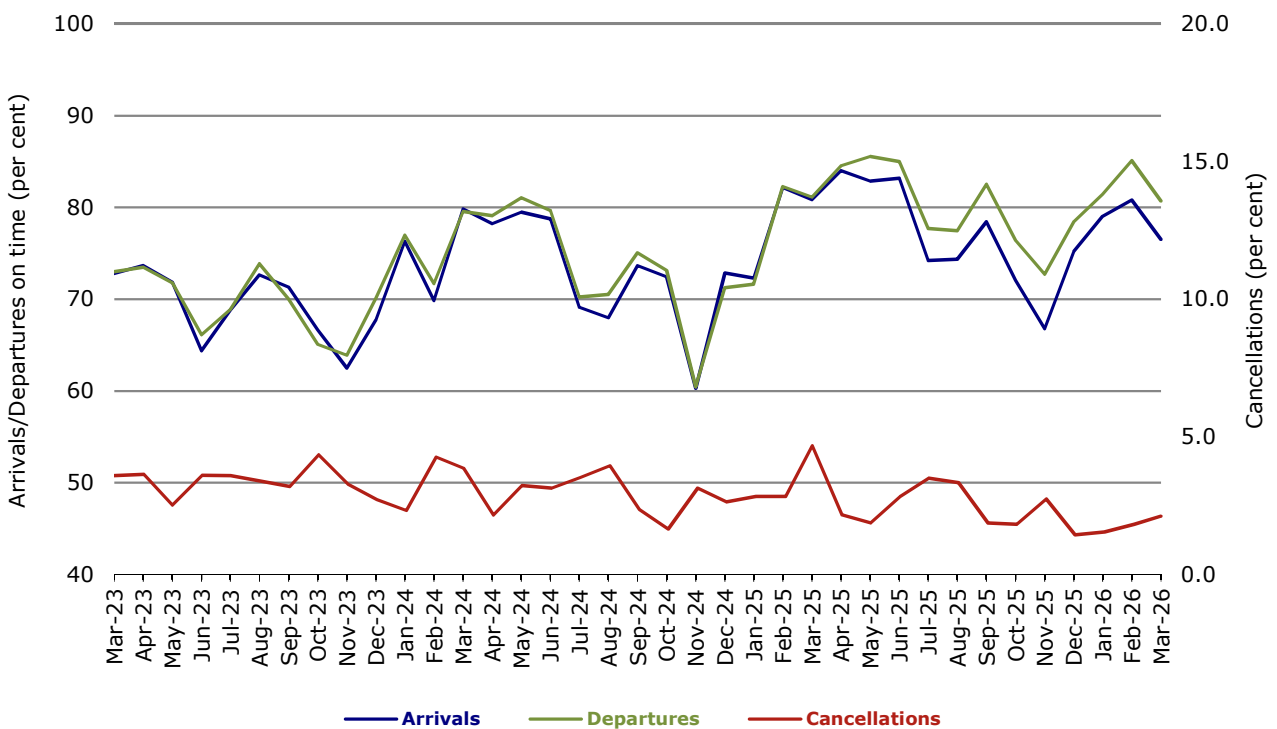


Figure 7 On time performance (by month from Mar 2023)—Virgin Australia

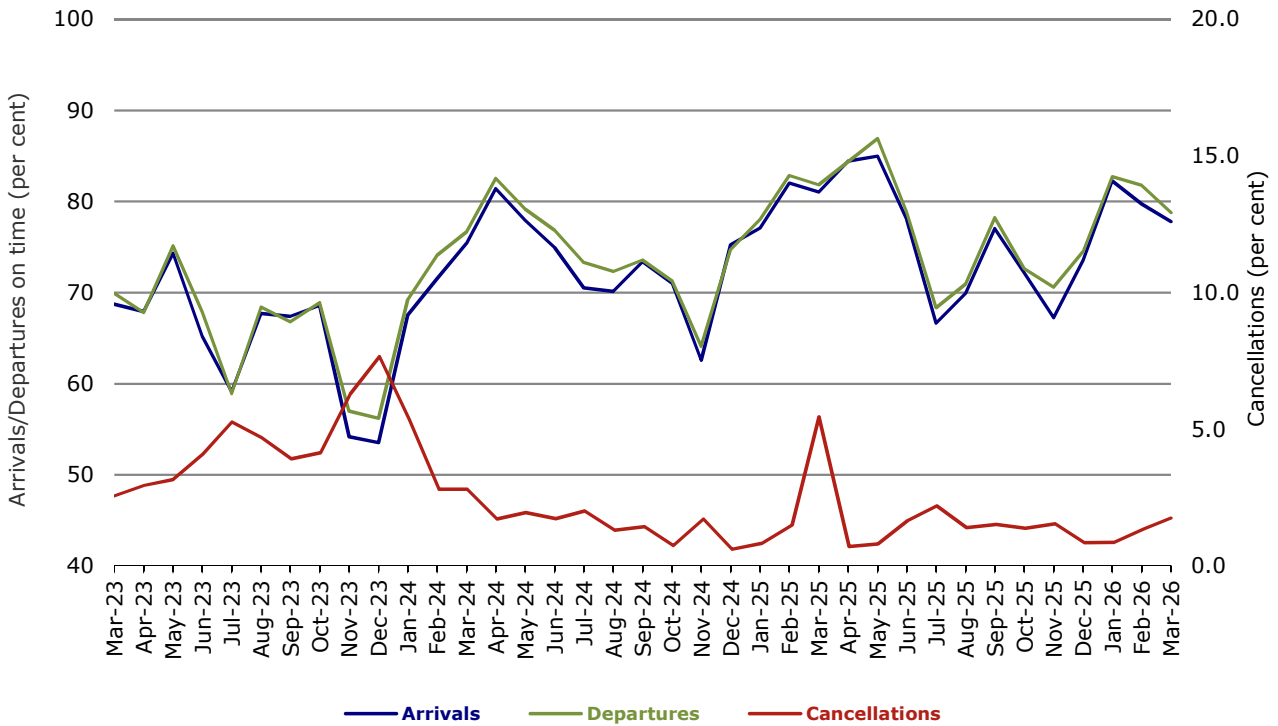


Figure 8 On time performance (by month from Mar 2023)—QantasLink

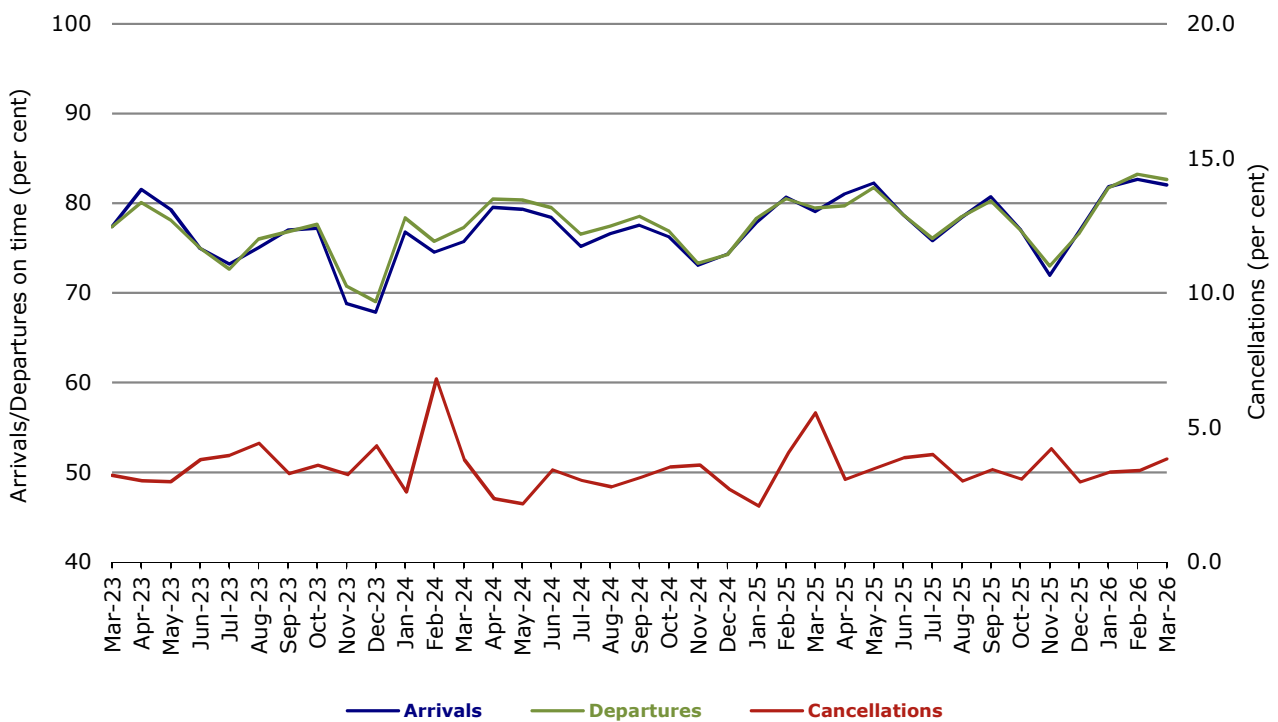


Figure 9 On time performance (by month from Mar 2023)—Rex Airlines

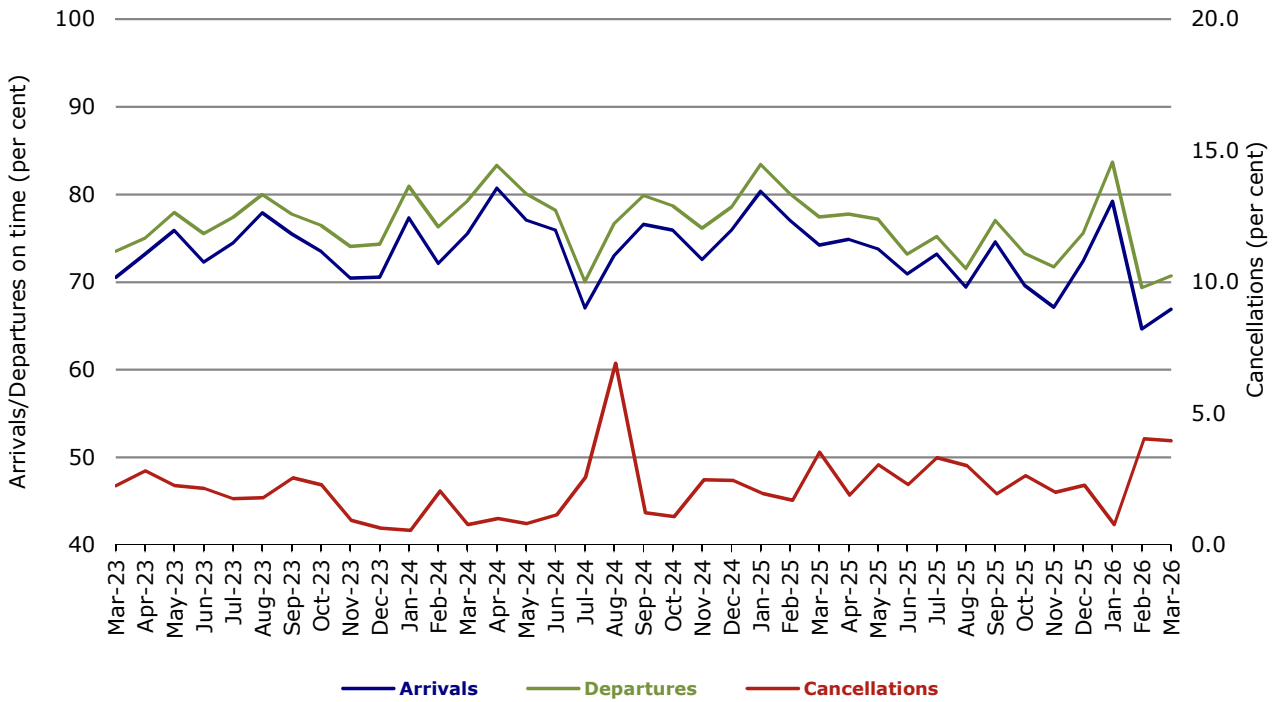


Figure 10 On time performance (by month from Mar 2023)—Virgin Australia Regional Airlines

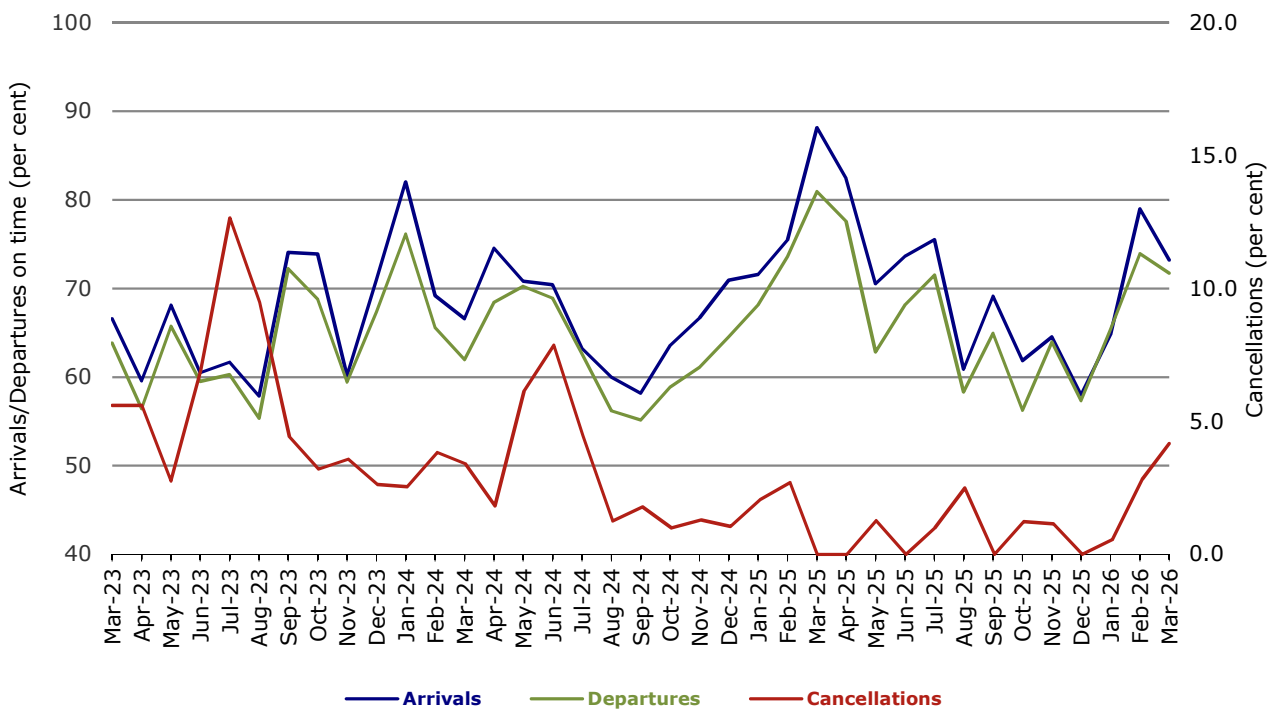
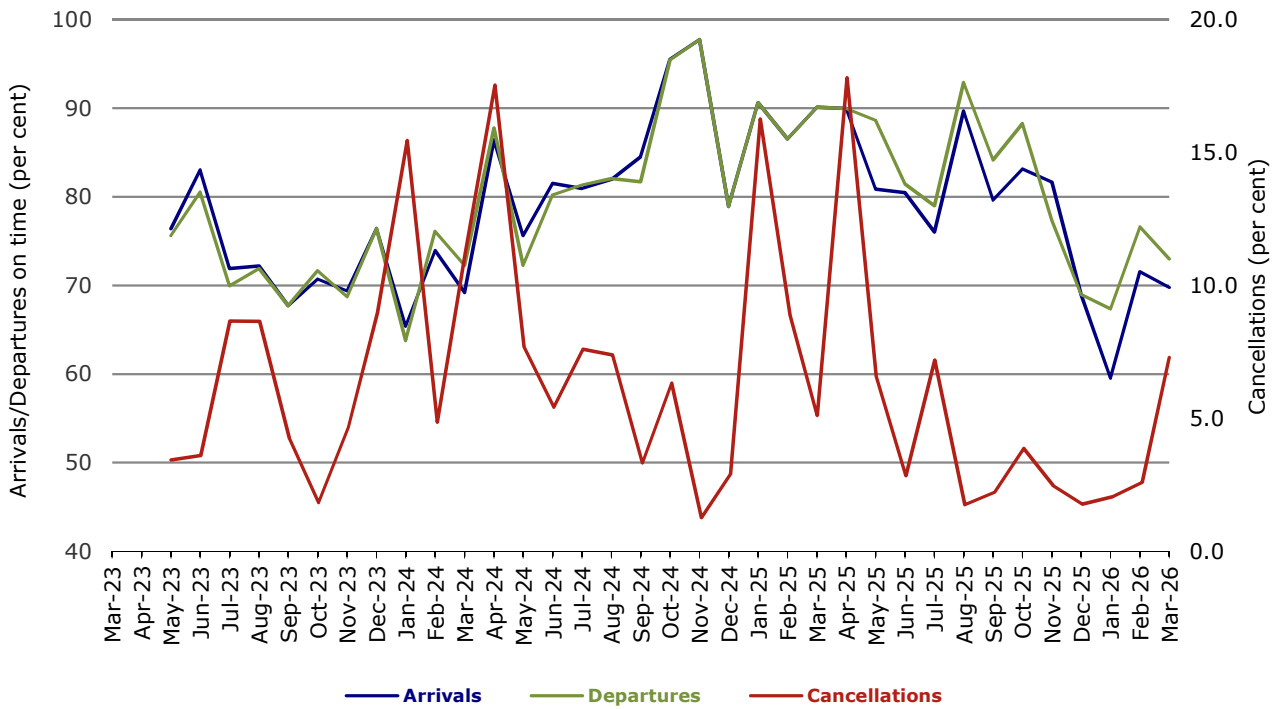
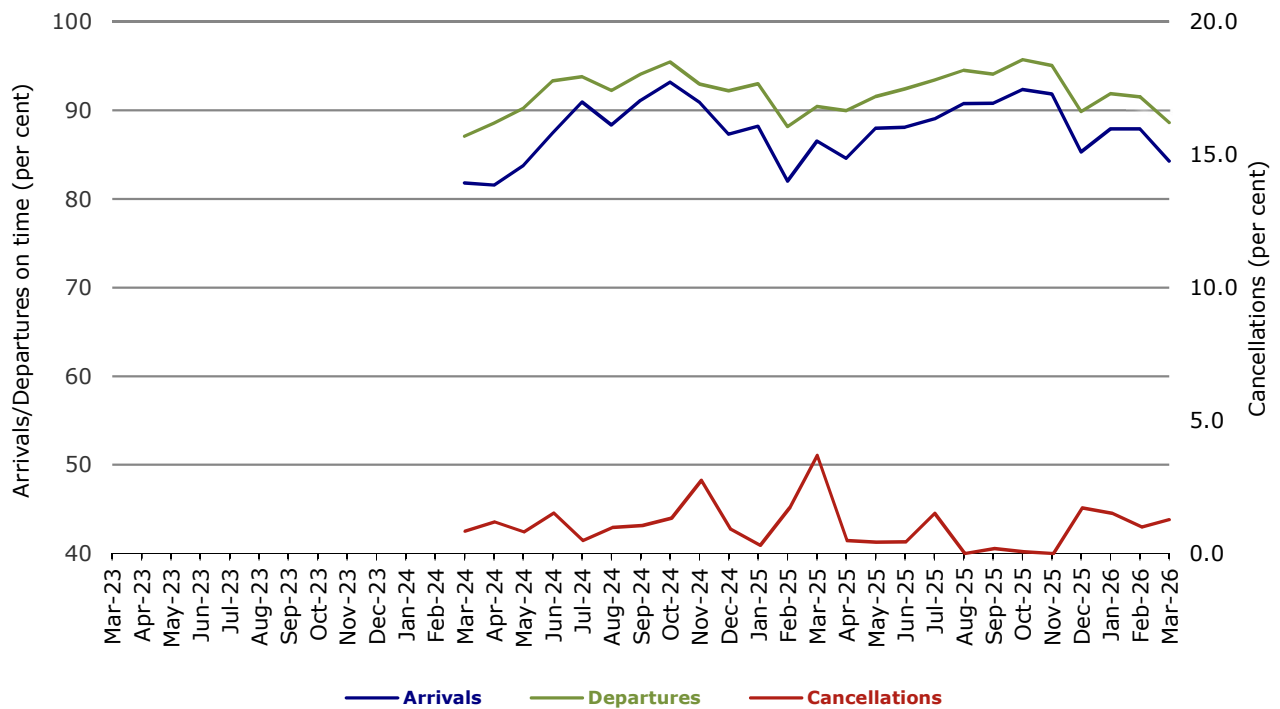


Figure 11 On time performance (by month from Mar 2023)—Skytrans Australia



Note: Skytrans Australia data included from May 2023

Figure 12 On time performance (by month from Mar 2023)—Hinterland



Note: Hinterland data included from March 2024

Individual routes

On time performance is reported for all routes where the passenger load averages over 8,000 passengers per month over the previous six months, and where two or more airlines operate in competition on those routes. There are now 59 routes for which data are presented.

	<i>Sectors</i>		<i>Arrivals On Time</i>		<i>Departures On Time</i>		<i>Cancellations</i>	
	<i>Sched.</i>	<i>Flown</i>	<i>No.</i>	<i>%</i>	<i>No.</i>	<i>%</i>	<i>No.</i>	<i>%</i>
Adelaide-Alice Springs								
QantasLink	31	31	29	93.5	28	90.3	0	0.0
Virgin Australia	13	13	8	61.5	5	38.5	0	0.0
All Airlines	44	44	37	84.1	33	75.0	0	0.0
Adelaide-Brisbane								
Jetstar	45	45	38	84.4	37	82.2	0	0.0
QantasLink	170	169	151	89.3	149	88.2	1	0.6
Virgin Australia	129	126	115	91.3	110	87.3	3	2.3
All Airlines	344	340	304	89.4	296	87.1	4	1.2
Adelaide-Canberra								
QantasLink	115	113	107	94.7	109	96.5	2	1.7
Virgin Australia	17	17	13	76.5	14	82.4	0	0.0
All Airlines	132	130	120	92.3	123	94.6	2	1.5
Adelaide-Gold Coast								
Jetstar	39	39	35	89.7	34	87.2	0	0.0
Virgin Australia	33	33	28	84.8	27	81.8	0	0.0
All Airlines	72	72	63	87.5	61	84.7	0	0.0
Adelaide-Melbourne								
Jetstar	166	163	106	65.0	99	60.7	3	1.8
Qantas	261	259	199	76.8	208	80.3	2	0.8
QantasLink	35	34	28	82.4	32	94.1	1	2.9
Virgin Australia	272	270	200	74.1	192	71.1	2	0.7
All Airlines	734	726	533	73.4	531	73.1	8	1.1
Adelaide-Perth								
Jetstar	34	34	22	64.7	23	67.6	0	0.0
Qantas	102	102	89	87.3	89	87.3	0	0.0
Virgin Australia	74	74	53	71.6	51	68.9	0	0.0
All Airlines	210	210	164	78.1	163	77.6	0	0.0
Adelaide-Port Lincoln								
QantasLink	102	100	91	91.0	90	90.0	2	2.0
Rex Airlines	152	134	91	67.9	94	70.1	18	11.8
All Airlines	254	234	182	77.8	184	78.6	20	7.9
Adelaide-Sydney								
Jetstar	135	129	97	75.2	100	77.5	6	4.4
Qantas	256	251	191	76.1	198	78.9	5	2.0
Virgin Australia	171	167	129	77.2	121	72.5	4	2.3
All Airlines	562	547	417	76.2	419	76.6	15	2.7
Albury-Sydney								
QantasLink	101	97	73	75.3	69	71.1	4	4.0
Rex Airlines	81	78	56	71.8	58	74.4	3	3.7
All Airlines	182	175	129	73.7	127	72.6	7	3.8

	Sectors		Arrivals On Time		Departures On Time		Cancellations	
	Sched.	Flown	No.	%	No.	%	No.	%
Alice Springs-Adelaide								
QantasLink	31	31	29	93.5	29	93.5	0	0.0
Virgin Australia	13	13	4	30.8	5	38.5	0	0.0
All Airlines	44	44	33	75.0	34	77.3	0	0.0
Ayers Rock-Melbourne								
Jetstar	19	19	17	89.5	17	89.5	0	0.0
Virgin Australia	13	13	7	53.8	6	46.2	0	0.0
All Airlines	32	32	24	75.0	23	71.9	0	0.0
Ballina-Sydney								
Jetstar	77	76	62	81.6	62	81.6	1	1.3
QantasLink	57	55	41	74.5	42	76.4	2	3.5
Virgin Australia	31	31	26	83.9	22	71.0	0	0.0
All Airlines	165	162	129	79.6	126	77.8	3	1.8
Brisbane-Adelaide								
Jetstar	45	45	35	77.8	37	82.2	0	0.0
QantasLink	171	170	134	78.8	141	82.9	1	0.6
Virgin Australia	129	126	113	89.7	112	88.9	3	2.3
All Airlines	345	341	282	82.7	290	85.0	4	1.2
Brisbane-Cairns								
Jetstar	87	87	64	73.6	60	69.0	0	0.0
Qantas	44	44	39	88.6	39	88.6	0	0.0
QantasLink	130	130	108	83.1	111	85.4	0	0.0
Virgin Australia	132	132	113	85.6	110	83.3	0	0.0
All Airlines	393	393	324	82.4	320	81.4	0	0.0
Brisbane-Canberra								
Jetstar	31	31	25	80.6	25	80.6	0	0.0
QantasLink	179	175	158	90.3	155	88.6	4	2.2
Virgin Australia	106	103	91	88.3	91	88.3	3	2.8
All Airlines	316	309	274	88.7	271	87.7	7	2.2
Brisbane-Darwin								
Jetstar	19	19	16	84.2	13	68.4	0	0.0
Qantas	32	32	30	93.8	29	90.6	0	0.0
Virgin Australia	31	31	30	96.8	29	93.5	0	0.0
All Airlines	82	82	76	92.7	71	86.6	0	0.0
Brisbane-Emerald								
QantasLink	128	123	107	87.0	110	89.4	5	3.9
Virgin Australia	28	27	26	96.3	23	85.2	1	3.6
All Airlines	156	150	133	88.7	133	88.7	6	3.8
Brisbane-Gladstone								
QantasLink	134	126	110	87.3	110	87.3	8	6.0
Virgin Australia	36	35	29	82.9	29	82.9	1	2.8
All Airlines	170	161	139	86.3	139	86.3	9	5.3
Brisbane-Hamilton Island								
QantasLink	26	26	21	80.8	22	84.6	0	0.0
Virgin Australia	32	32	23	71.9	21	65.6	0	0.0
All Airlines	58	58	44	75.9	43	74.1	0	0.0
Brisbane-Hobart								
Jetstar	31	31	28	90.3	27	87.1	0	0.0
QantasLink	30	30	24	80.0	24	80.0	0	0.0
Virgin Australia	43	43	40	93.0	37	86.0	0	0.0
All Airlines	104	104	92	88.5	88	84.6	0	0.0

	Sectors		Arrivals On Time		Departures On Time		Cancellations	
	Sched.	Flown	No.	%	No.	%	No.	%
Brisbane-Launceston								
Jetstar	23	23	20	87.0	19	82.6	0	0.0
Virgin Australia	18	18	15	83.3	15	83.3	0	0.0
All Airlines	41	41	35	85.4	34	82.9	0	0.0
Brisbane-Mackay								
Jetstar	28	28	14	50.0	14	50.0	0	0.0
Qantas	9	9	9	100.0	9	100.0	0	0.0
QantasLink	181	178	159	89.3	163	91.6	3	1.7
Virgin Australia	130	130	115	88.5	111	85.4	0	0.0
All Airlines	348	345	297	86.1	297	86.1	3	0.9
Brisbane-Melbourne								
Jetstar	169	163	111	68.1	100	61.3	6	3.6
Qantas	325	319	263	82.4	268	84.0	6	1.8
QantasLink	100	91	69	75.8	76	83.5	9	9.0
Virgin Australia	465	460	341	74.1	366	79.6	5	1.1
All Airlines	1 059	1 033	784	75.9	810	78.4	26	2.5
Brisbane-Mount Isa								
Qantas	45	43	43	100.0	40	93.0	2	4.4
QantasLink	14	14	14	100.0	14	100.0	0	0.0
Virgin Australia	13	13	10	76.9	13	100.0	0	0.0
All Airlines	72	70	67	95.7	67	95.7	2	2.8
Brisbane-Newcastle								
Jetstar	58	58	48	82.8	48	82.8	0	0.0
QantasLink	90	89	79	88.8	77	86.5	1	1.1
Virgin Australia	85	84	67	79.8	65	77.4	1	1.2
All Airlines	233	231	194	84.0	190	82.3	2	0.9
Brisbane-Perth								
Jetstar	31	31	20	64.5	17	54.8	0	0.0
Qantas	169	169	132	78.1	157	92.9	0	0.0
Virgin Australia	127	127	82	64.6	89	70.1	0	0.0
All Airlines	327	327	234	71.6	263	80.4	0	0.0
Brisbane-Proserpine								
Jetstar	44	42	26	61.9	28	66.7	2	4.5
Virgin Australia	32	31	23	74.2	20	64.5	1	3.1
All Airlines	76	73	49	67.1	48	65.8	3	3.9
Brisbane-Rockhampton								
QantasLink	184	181	158	87.3	154	85.1	3	1.6
Virgin Australia	165	164	132	80.5	137	83.5	1	0.6
All Airlines	349	345	290	84.1	291	84.3	4	1.1
Brisbane-Sydney								
Jetstar	205	197	138	70.1	137	69.5	8	3.9
Qantas	547	529	399	75.4	422	79.8	18	3.3
Virgin Australia	502	487	368	75.6	389	79.9	15	3.0
All Airlines	1 254	1 213	905	74.6	948	78.2	41	3.3
Brisbane-Townsville								
Jetstar	67	66	50	75.8	49	74.2	1	1.5
Qantas	39	39	36	92.3	36	92.3	0	0.0
QantasLink	136	135	118	87.4	127	94.1	1	0.7
Virgin Australia	138	138	127	92.0	125	90.6	0	0.0
All Airlines	380	378	331	87.6	337	89.2	2	0.5

	Sectors		Arrivals On Time		Departures On Time		Cancellations	
	Sched.	Flown	No.	%	No.	%	No.	%
Broome-Perth								
QantasLink	81	81	77	95.1	74	91.4	0	0.0
Virgin Australia	43	42	38	90.5	38	90.5	1	2.3
Virgin Australia Regional Airlines	10	10	7	70.0	5	50.0	0	0.0
All Airlines	134	133	122	91.7	117	88.0	1	0.7
Cairns-Brisbane								
Jetstar	86	86	67	77.9	67	77.9	0	0.0
Qantas	44	44	41	93.2	42	95.5	0	0.0
QantasLink	130	129	114	88.4	114	88.4	1	0.8
Virgin Australia	132	131	110	84.0	103	78.6	1	0.8
All Airlines	392	390	332	85.1	326	83.6	2	0.5
Cairns-Melbourne								
Jetstar	72	68	44	64.7	43	63.2	4	5.6
Qantas	31	31	22	71.0	28	90.3	0	0.0
Virgin Australia	38	38	28	73.7	30	78.9	0	0.0
All Airlines	141	137	94	68.6	101	73.7	4	2.8
Cairns-Sydney								
Jetstar	94	93	71	76.3	71	76.3	1	1.1
Qantas	41	40	22	55.0	33	82.5	1	2.4
Virgin Australia	69	69	48	69.6	54	78.3	0	0.0
All Airlines	204	202	141	69.8	158	78.2	2	1.0
Canberra-Adelaide								
QantasLink	114	112	108	96.4	106	94.6	2	1.8
Virgin Australia	17	17	14	82.4	14	82.4	0	0.0
All Airlines	131	129	122	94.6	120	93.0	2	1.5
Canberra-Brisbane								
Jetstar	31	31	21	67.7	20	64.5	0	0.0
QantasLink	179	172	144	83.7	153	89.0	7	3.9
Virgin Australia	106	103	97	94.2	94	91.3	3	2.8
All Airlines	316	306	262	85.6	267	87.3	10	3.2
Canberra-Gold Coast								
Jetstar	14	14	11	78.6	9	64.3	0	0.0
Virgin Australia	31	31	27	87.1	25	80.6	0	0.0
All Airlines	45	45	38	84.4	34	75.6	0	0.0
Canberra-Melbourne								
Jetstar	31	31	19	61.3	18	58.1	0	0.0
Qantas	6	6	4	66.7	4	66.7	0	0.0
QantasLink	238	223	175	78.5	177	79.4	15	6.3
Virgin Australia	131	130	112	86.2	110	84.6	1	0.8
All Airlines	406	390	310	79.5	309	79.2	16	3.9
Canberra-Sydney								
QantasLink	412	374	278	74.3	271	72.5	38	9.2
Virgin Australia	254	235	197	83.8	200	85.1	19	7.5
All Airlines	666	609	475	78.0	471	77.3	57	8.6
Coffs Harbour-Sydney								
QantasLink	114	106	77	72.6	82	77.4	8	7.0
Rex Airlines	83	83	51	61.4	56	67.5	0	0.0
All Airlines	197	189	128	67.7	138	73.0	8	4.1

	Sectors		Arrivals On Time		Departures On Time		Cancellations	
	Sched.	Flown	No.	%	No.	%	No.	%
Darwin-Brisbane								
Jetstar	19	19	10	52.6	13	68.4	0	0.0
Qantas	32	32	30	93.8	29	90.6	0	0.0
Virgin Australia	31	31	29	93.5	29	93.5	0	0.0
All Airlines	82	82	69	84.1	71	86.6	0	0.0
Darwin-Melbourne								
Jetstar	19	19	12	63.2	12	63.2	0	0.0
Qantas	28	28	24	85.7	25	89.3	0	0.0
Virgin Australia	16	15	12	80.0	12	80.0	1	6.3
All Airlines	63	62	48	77.4	49	79.0	1	1.6
Darwin-Perth								
Qantas	13	13	10	76.9	11	84.6	0	0.0
QantasLink	20	19	17	89.5	18	94.7	1	5.0
Virgin Australia	14	14	11	78.6	10	71.4	0	0.0
Virgin Australia Regional Airlines	8	8	7	87.5	5	62.5	0	0.0
All Airlines	55	54	45	83.3	44	81.5	1	1.8
Devonport-Melbourne								
QantasLink	101	94	68	72.3	74	78.7	7	6.9
Rex Airlines	52	48	30	62.5	34	70.8	4	7.7
All Airlines	153	142	98	69.0	108	76.1	11	7.2
Dubbo-Sydney								
QantasLink	116	111	87	78.4	84	75.7	5	4.3
Rex Airlines	113	104	67	64.4	71	68.3	9	8.0
All Airlines	229	215	154	71.6	155	72.1	14	6.1
Emerald-Brisbane								
QantasLink	128	122	110	90.2	110	90.2	6	4.7
Virgin Australia	27	27	26	96.3	26	96.3	0	0.0
All Airlines	155	149	136	91.3	136	91.3	6	3.9
Gladstone-Brisbane								
QantasLink	134	124	110	88.7	108	87.1	10	7.5
Virgin Australia	36	35	30	85.7	31	88.6	1	2.8
All Airlines	170	159	140	88.1	139	87.4	11	6.5
Gold Coast-Adelaide								
Jetstar	39	39	34	87.2	34	87.2	0	0.0
Virgin Australia	33	33	26	78.8	25	75.8	0	0.0
All Airlines	72	72	60	83.3	59	81.9	0	0.0
Gold Coast-Canberra								
Jetstar	14	14	13	92.9	13	92.9	0	0.0
Virgin Australia	30	30	28	93.3	24	80.0	0	0.0
All Airlines	44	44	41	93.2	37	84.1	0	0.0
Gold Coast-Melbourne								
Jetstar	200	199	154	77.4	149	74.9	1	0.5
Qantas	19	19	18	94.7	16	84.2	0	0.0
QantasLink	58	58	28	48.3	36	62.1	0	0.0
Virgin Australia	262	261	193	73.9	176	67.4	1	0.4
All Airlines	539	537	393	73.2	377	70.2	2	0.4

	Sectors		Arrivals On Time		Departures On Time		Cancellations	
	Sched.	Flown	No.	%	No.	%	No.	%
Gold Coast-Sydney								
Jetstar	214	206	152	73.8	153	74.3	8	3.7
Qantas	134	134	83	61.9	100	74.6	0	0.0
Virgin Australia	298	294	187	63.6	196	66.7	4	1.3
All Airlines	646	634	422	66.6	449	70.8	12	1.9
Hamilton Island-Brisbane								
QantasLink	26	26	21	80.8	20	76.9	0	0.0
Virgin Australia	32	32	20	62.5	17	53.1	0	0.0
All Airlines	58	58	41	70.7	37	63.8	0	0.0
Hamilton Island-Sydney								
Qantas	31	31	16	51.6	18	58.1	0	0.0
Virgin Australia	23	23	7	30.4	9	39.1	0	0.0
All Airlines	54	54	23	42.6	27	50.0	0	0.0
Hobart-Brisbane								
Jetstar	31	31	27	87.1	27	87.1	0	0.0
QantasLink	30	30	25	83.3	22	73.3	0	0.0
Virgin Australia	43	43	37	86.0	36	83.7	0	0.0
All Airlines	104	104	89	85.6	85	81.7	0	0.0
Hobart-Melbourne								
Jetstar	177	177	95	53.7	93	52.5	0	0.0
Qantas	38	38	33	86.8	30	78.9	0	0.0
QantasLink	82	80	65	81.3	69	86.3	2	2.4
Virgin Australia	127	127	101	79.5	92	72.4	0	0.0
All Airlines	424	422	294	69.7	284	67.3	2	0.5
Hobart-Sydney								
Jetstar	85	84	67	79.8	62	73.8	1	1.2
QantasLink	88	86	55	64.0	58	67.4	2	2.3
Virgin Australia	79	77	57	74.0	57	74.0	2	2.5
All Airlines	252	247	179	72.5	177	71.7	5	2.0
Kalgoorlie-Perth								
Qantas	7	7	7	100.0	7	100.0	0	0.0
QantasLink	72	71	61	85.9	61	85.9	1	1.4
Virgin Australia	101	99	64	64.6	71	71.7	2	2.0
Virgin Australia Regional Airlines	5	5	4	80.0	4	80.0	0	0.0
All Airlines	185	182	136	74.7	143	78.6	3	1.6
Karratha-Perth								
Qantas	13	12	11	91.7	10	83.3	1	7.7
QantasLink	178	166	141	84.9	138	83.1	12	6.7
Virgin Australia	65	62	54	87.1	58	93.5	3	4.6
Virgin Australia Regional Airlines	16	16	14	87.5	13	81.3	0	0.0
All Airlines	272	256	220	85.9	219	85.5	16	5.9
Launceston-Brisbane								
Jetstar	23	23	21	91.3	21	91.3	0	0.0
Virgin Australia	18	18	14	77.8	11	61.1	0	0.0
All Airlines	41	41	35	85.4	32	78.0	0	0.0
Launceston-Melbourne								
Jetstar	109	109	75	68.8	75	68.8	0	0.0
QantasLink	122	113	84	74.3	82	72.6	9	7.4
Virgin Australia	93	93	78	83.9	68	73.1	0	0.0
All Airlines	324	315	237	75.2	225	71.4	9	2.8

	Sectors		Arrivals On Time		Departures On Time		Cancellations	
	Sched.	Flown	No.	%	No.	%	No.	%
Launceston-Sydney								
Jetstar	46	45	31	68.9	33	73.3	1	2.2
QantasLink	31	31	20	64.5	21	67.7	0	0.0
Virgin Australia	31	31	13	41.9	16	51.6	0	0.0
All Airlines	108	107	64	59.8	70	65.4	1	0.9
Mackay-Brisbane								
Jetstar	28	28	13	46.4	16	57.1	0	0.0
Qantas	9	9	9	100.0	9	100.0	0	0.0
QantasLink	186	183	175	95.6	175	95.6	3	1.6
Virgin Australia	130	130	124	95.4	123	94.6	0	0.0
All Airlines	353	350	321	91.7	323	92.3	3	0.8
Melbourne-Adelaide								
Jetstar	166	164	95	57.9	91	55.5	2	1.2
Qantas	261	258	202	78.3	207	80.2	3	1.1
QantasLink	35	34	23	67.6	29	85.3	1	2.9
Virgin Australia	272	270	189	70.0	215	79.6	2	0.7
All Airlines	734	726	509	70.1	542	74.7	8	1.1
Melbourne-Ayers Rock								
Jetstar	19	19	18	94.7	18	94.7	0	0.0
Virgin Australia	13	13	7	53.8	7	53.8	0	0.0
All Airlines	32	32	25	78.1	25	78.1	0	0.0
Melbourne-Brisbane								
Jetstar	170	164	104	63.4	105	64.0	6	3.5
Qantas	325	317	276	87.1	278	87.7	8	2.5
QantasLink	100	91	64	70.3	67	73.6	9	9.0
Virgin Australia	473	468	347	74.1	389	83.1	5	1.1
All Airlines	1 068	1 040	791	76.1	839	80.7	28	2.6
Melbourne-Cairns								
Jetstar	72	72	43	59.7	36	50.0	0	0.0
Qantas	31	31	23	74.2	27	87.1	0	0.0
Virgin Australia	38	38	36	94.7	35	92.1	0	0.0
All Airlines	141	141	102	72.3	98	69.5	0	0.0
Melbourne-Canberra								
Jetstar	31	31	23	74.2	20	64.5	0	0.0
Qantas	6	6	3	50.0	3	50.0	0	0.0
QantasLink	237	225	175	77.8	179	79.6	12	5.1
Virgin Australia	132	131	107	81.7	111	84.7	1	0.8
All Airlines	406	393	308	78.4	313	79.6	13	3.2
Melbourne-Darwin								
Jetstar	19	19	14	73.7	14	73.7	0	0.0
Qantas	28	28	19	67.9	21	75.0	0	0.0
Virgin Australia	16	16	12	75.0	13	81.3	0	0.0
All Airlines	63	63	45	71.4	48	76.2	0	0.0
Melbourne-Devonport								
QantasLink	101	95	73	76.8	68	71.6	6	5.9
Rex Airlines	52	48	36	75.0	35	72.9	4	7.7
All Airlines	153	143	109	76.2	103	72.0	10	6.5
Melbourne-Gold Coast								
Jetstar	200	199	147	73.9	141	70.9	1	0.5
Qantas	20	20	16	80.0	17	85.0	0	0.0
QantasLink	58	58	44	75.9	49	84.5	0	0.0
Virgin Australia	262	261	214	82.0	203	77.8	1	0.4
All Airlines	540	538	421	78.3	410	76.2	2	0.4

	Sectors		Arrivals On Time		Departures On Time		Cancellations	
	Sched.	Flown	No.	%	No.	%	No.	%
Melbourne-Hobart								
Jetstar	177	177	100	56.5	102	57.6	0	0.0
Qantas	38	38	32	84.2	32	84.2	0	0.0
QantasLink	82	80	65	81.3	66	82.5	2	2.4
Virgin Australia	127	127	101	79.5	103	81.1	0	0.0
All Airlines	424	422	298	70.6	303	71.8	2	0.5
Melbourne-Launceston								
Jetstar	109	109	79	72.5	72	66.1	0	0.0
QantasLink	122	115	74	64.3	75	65.2	7	5.7
Virgin Australia	93	93	72	77.4	69	74.2	0	0.0
All Airlines	324	317	225	71.0	216	68.1	7	2.2
Melbourne-Mildura								
QantasLink	93	92	55	59.8	54	58.7	1	1.1
Rex Airlines	105	105	58	55.2	61	58.1	0	0.0
All Airlines	198	197	113	57.4	115	58.4	1	0.5
Melbourne-Newcastle								
Jetstar	62	62	53	85.5	51	82.3	0	0.0
QantasLink	54	52	37	71.2	39	75.0	2	3.7
Virgin Australia	43	43	37	86.0	36	83.7	0	0.0
All Airlines	159	157	127	80.9	126	80.3	2	1.3
Melbourne-Perth								
Jetstar	81	81	57	70.4	50	61.7	0	0.0
Qantas	213	213	150	70.4	177	83.1	0	0.0
Virgin Australia	249	248	167	67.3	173	69.8	1	0.4
All Airlines	543	542	374	69.0	400	73.8	1	0.2
Melbourne-Sunshine Coast								
Jetstar	77	77	45	58.4	43	55.8	0	0.0
Qantas	7	7	6	85.7	6	85.7	0	0.0
QantasLink	32	31	13	41.9	17	54.8	1	3.1
Virgin Australia	74	74	62	83.8	60	81.1	0	0.0
All Airlines	190	189	126	66.7	126	66.7	1	0.5
Melbourne-Sydney								
Jetstar	505	478	315	65.9	315	65.9	27	5.3
Qantas	848	808	573	70.9	625	77.4	40	4.7
QantasLink	37	33	28	84.8	32	97.0	4	10.8
Virgin Australia	843	807	583	72.2	655	81.2	36	4.3
All Airlines	2 233	2 126	1 499	70.5	1 627	76.5	107	4.8
Mildura-Melbourne								
QantasLink	93	92	69	75.0	67	72.8	1	1.1
Rex Airlines	104	104	52	50.0	55	52.9	0	0.0
All Airlines	197	196	121	61.7	122	62.2	1	0.5
Mount Isa-Brisbane								
Qantas	45	43	42	97.7	41	95.3	2	4.4
QantasLink	14	14	14	100.0	14	100.0	0	0.0
Virgin Australia	13	13	11	84.6	9	69.2	0	0.0
All Airlines	72	70	67	95.7	64	91.4	2	2.8

	Sectors		Arrivals On Time		Departures On Time		Cancellations	
	Sched.	Flown	No.	%	No.	%	No.	%
Newcastle-Brisbane								
Jetstar	58	58	48	82.8	47	81.0	0	0.0
QantasLink	90	89	78	87.6	81	91.0	1	1.1
Virgin Australia	83	83	66	79.5	67	80.7	0	0.0
All Airlines	231	230	192	83.5	195	84.8	1	0.4
Newcastle-Melbourne								
Jetstar	62	61	48	78.7	47	77.0	1	1.6
QantasLink	54	52	42	80.8	44	84.6	2	3.7
Virgin Australia	43	43	32	74.4	33	76.7	0	0.0
All Airlines	159	156	122	78.2	124	79.5	3	1.9
Newman-Perth								
Qantas	5	4	4	100.0	4	100.0	1	20.0
QantasLink	133	132	116	87.9	120	90.9	1	0.8
Virgin Australia	55	55	37	67.3	45	81.8	0	0.0
Virgin Australia Regional Airlines	4	4	2	50.0	4	100.0	0	0.0
All Airlines	197	195	159	81.5	173	88.7	2	1.0
Perth-Adelaide								
Jetstar	34	34	23	67.6	22	64.7	0	0.0
Qantas	102	102	94	92.2	93	91.2	0	0.0
Virgin Australia	73	73	63	86.3	64	87.7	0	0.0
All Airlines	209	209	180	86.1	179	85.6	0	0.0
Perth-Brisbane								
Jetstar	31	29	18	62.1	19	65.5	2	6.5
Qantas	169	169	140	82.8	146	86.4	0	0.0
Virgin Australia	125	125	82	65.6	86	68.8	0	0.0
All Airlines	325	323	240	74.3	251	77.7	2	0.6
Perth-Broome								
QantasLink	81	81	76	93.8	70	86.4	0	0.0
Virgin Australia	43	43	40	93.0	38	88.4	0	0.0
Virgin Australia Regional Airlines	10	10	8	80.0	8	80.0	0	0.0
All Airlines	134	134	124	92.5	116	86.6	0	0.0
Perth-Darwin								
Qantas	13	13	9	69.2	10	76.9	0	0.0
QantasLink	20	20	19	95.0	20	100.0	0	0.0
Virgin Australia	14	14	11	78.6	12	85.7	0	0.0
Virgin Australia Regional Airlines	8	8	3	37.5	4	50.0	0	0.0
All Airlines	55	55	42	76.4	46	83.6	0	0.0
Perth-Kalgoorlie								
Qantas	7	7	7	100.0	7	100.0	0	0.0
QantasLink	72	71	64	90.1	66	93.0	1	1.4
Virgin Australia	101	99	79	79.8	85	85.9	2	2.0
Virgin Australia Regional Airlines	5	5	4	80.0	4	80.0	0	0.0
All Airlines	185	182	154	84.6	162	89.0	3	1.6
Perth-Karratha								
Qantas	13	13	12	92.3	12	92.3	0	0.0
QantasLink	178	169	146	86.4	148	87.6	9	5.1
Virgin Australia	65	62	54	87.1	56	90.3	3	4.6
Virgin Australia Regional Airlines	16	16	15	93.8	13	81.3	0	0.0
All Airlines	272	260	227	87.3	229	88.1	12	4.4

	Sectors		Arrivals On Time		Departures On Time		Cancellations	
	Sched.	Flown	No.	%	No.	%	No.	%
Perth-Melbourne								
Jetstar	81	81	61	75.3	60	74.1	0	0.0
Qantas	213	212	172	81.1	178	84.0	1	0.5
Virgin Australia	259	258	219	84.9	218	84.5	1	0.4
All Airlines	553	551	452	82.0	456	82.8	2	0.4
Perth-Newman								
Qantas	5	5	5	100.0	5	100.0	0	0.0
QantasLink	133	132	125	94.7	129	97.7	1	0.8
Virgin Australia	55	55	49	89.1	51	92.7	0	0.0
Virgin Australia Regional Airlines	4	4	3	75.0	4	100.0	0	0.0
All Airlines	197	196	182	92.9	189	96.4	1	0.5
Perth-Port Hedland								
Qantas	5	5	4	80.0	4	80.0	0	0.0
QantasLink	147	144	116	80.6	127	88.2	3	2.0
Virgin Australia	52	49	45	91.8	45	91.8	3	5.8
Virgin Australia Regional Airlines	9	9	7	77.8	7	77.8	0	0.0
All Airlines	213	207	172	83.1	183	88.4	6	2.8
Perth-Sydney								
Jetstar	57	51	45	88.2	30	58.8	6	10.5
Qantas	216	212	164	77.4	150	70.8	4	1.9
Virgin Australia	177	176	160	90.9	146	83.0	1	0.6
All Airlines	450	439	369	84.1	326	74.3	11	2.4
Port Hedland-Perth								
Qantas	5	5	3	60.0	4	80.0	0	0.0
QantasLink	147	144	114	79.2	119	82.6	3	2.0
Virgin Australia	52	49	33	67.3	42	85.7	3	5.8
Virgin Australia Regional Airlines	9	9	3	33.3	2	22.2	0	0.0
All Airlines	213	207	153	73.9	167	80.7	6	2.8
Port Lincoln-Adelaide								
QantasLink	102	100	92	92.0	94	94.0	2	2.0
Rex Airlines	152	133	90	67.7	91	68.4	19	12.5
All Airlines	254	233	182	78.1	185	79.4	21	8.3
Port Macquarie-Sydney								
QantasLink	114	110	91	82.7	91	82.7	4	3.5
Rex Airlines	57	52	25	48.1	27	51.9	5	8.8
All Airlines	171	162	116	71.6	118	72.8	9	5.3
Proserpine-Brisbane								
Jetstar	44	42	27	64.3	29	69.0	2	4.5
Virgin Australia	32	31	22	71.0	20	64.5	1	3.1
All Airlines	76	73	49	67.1	49	67.1	3	3.9
Rockhampton-Brisbane								
QantasLink	184	179	159	88.8	156	87.2	5	2.7
Virgin Australia	164	162	139	85.8	138	85.2	2	1.2
All Airlines	348	341	298	87.4	294	86.2	7	2.0
Sunshine Coast-Melbourne								
Jetstar	77	77	44	57.1	39	50.6	0	0.0
Qantas	7	7	7	100.0	5	71.4	0	0.0
QantasLink	32	31	10	32.3	12	38.7	1	3.1
Virgin Australia	74	74	65	87.8	58	78.4	0	0.0
All Airlines	190	189	126	66.7	114	60.3	1	0.5

	Sectors		Arrivals On Time		Departures On Time		Cancellations	
	Sched.	Flown	No.	%	No.	%	No.	%
Sunshine Coast-Sydney								
Jetstar	91	90	69	76.7	68	75.6	1	1.1
QantasLink	60	59	36	61.0	35	59.3	1	1.7
Virgin Australia	62	62	38	61.3	44	71.0	0	0.0
All Airlines	213	211	143	67.8	147	69.7	2	0.9
Sydney-Adelaide								
Jetstar	135	128	101	78.9	92	71.9	7	5.2
Qantas	255	250	188	75.2	189	75.6	5	2.0
Virgin Australia	171	168	123	73.2	122	72.6	3	1.8
All Airlines	561	546	412	75.5	403	73.8	15	2.7
Sydney-Albury								
QantasLink	101	97	65	67.0	62	63.9	4	4.0
Rex Airlines	82	79	53	67.1	50	63.3	3	3.7
All Airlines	183	176	118	67.0	112	63.6	7	3.8
Sydney-Ballina								
Jetstar	76	75	62	82.7	62	82.7	1	1.3
QantasLink	58	56	37	66.1	39	69.6	2	3.4
Virgin Australia	31	31	26	83.9	26	83.9	0	0.0
All Airlines	165	162	125	77.2	127	78.4	3	1.8
Sydney-Brisbane								
Jetstar	205	197	133	67.5	126	64.0	8	3.9
Qantas	545	529	381	72.0	413	78.1	16	2.9
Virgin Australia	495	484	349	72.1	354	73.1	11	2.2
All Airlines	1 245	1 210	863	71.3	893	73.8	35	2.8
Sydney-Cairns								
Jetstar	94	93	75	80.6	72	77.4	1	1.1
Qantas	41	41	32	78.0	33	80.5	0	0.0
Virgin Australia	69	69	59	85.5	55	79.7	0	0.0
All Airlines	204	203	166	81.8	160	78.8	1	0.5
Sydney-Canberra								
QantasLink	414	382	280	73.3	290	75.9	32	7.7
Virgin Australia	254	235	205	87.2	193	82.1	19	7.5
All Airlines	668	617	485	78.6	483	78.3	51	7.6
Sydney-Coffs Harbour								
QantasLink	116	110	80	72.7	73	66.4	6	5.2
Rex Airlines	83	83	58	69.9	55	66.3	0	0.0
All Airlines	199	193	138	71.5	128	66.3	6	3.0
Sydney-Dubbo								
QantasLink	116	111	80	72.1	81	73.0	5	4.3
Rex Airlines	108	101	70	69.3	64	63.4	7	6.5
All Airlines	224	212	150	70.8	145	68.4	12	5.4
Sydney-Gold Coast								
Jetstar	215	208	158	76.0	162	77.9	7	3.3
Qantas	134	134	103	76.9	99	73.9	0	0.0
Virgin Australia	297	294	205	69.7	219	74.5	3	1.0
All Airlines	646	636	466	73.3	480	75.5	10	1.5
Sydney-Hamilton Island								
Qantas	31	31	20	64.5	23	74.2	0	0.0
Virgin Australia	23	23	14	60.9	14	60.9	0	0.0
All Airlines	54	54	34	63.0	37	68.5	0	0.0

	Sectors		Arrivals On Time		Departures On Time		Cancellations	
	Sched.	Flown	No.	%	No.	%	No.	%
Sydney-Hobart								
Jetstar	85	84	64	76.2	62	73.8	1	1.2
QantasLink	89	87	47	54.0	47	54.0	2	2.2
Virgin Australia	78	77	61	79.2	62	80.5	1	1.3
All Airlines	252	248	172	69.4	171	69.0	4	1.6
Sydney-Launceston								
Jetstar	46	45	34	75.6	34	75.6	1	2.2
QantasLink	31	31	22	71.0	19	61.3	0	0.0
Virgin Australia	31	31	22	71.0	22	71.0	0	0.0
All Airlines	108	107	78	72.9	75	70.1	1	0.9
Sydney-Melbourne								
Jetstar	505	479	336	70.1	308	64.3	26	5.1
Qantas	848	815	593	72.8	642	78.8	33	3.9
QantasLink	38	34	22	64.7	24	70.6	4	10.5
Virgin Australia	837	801	600	74.9	590	73.7	36	4.3
All Airlines	2 228	2 129	1 551	72.9	1 564	73.5	99	4.4
Sydney-Perth								
Jetstar	57	57	44	77.2	36	63.2	0	0.0
Qantas	216	212	131	61.8	150	70.8	4	1.9
Virgin Australia	191	190	138	72.6	143	75.3	1	0.5
All Airlines	464	459	313	68.2	329	71.7	5	1.1
Sydney-Port Macquarie								
QantasLink	114	111	86	77.5	84	75.7	3	2.6
Rex Airlines	59	53	28	52.8	27	50.9	6	10.2
All Airlines	173	164	114	69.5	111	67.7	9	5.2
Sydney-Sunshine Coast								
Jetstar	91	90	73	81.1	72	80.0	1	1.1
QantasLink	61	60	28	46.7	37	61.7	1	1.6
Virgin Australia	62	62	43	69.4	46	74.2	0	0.0
All Airlines	214	212	144	67.9	155	73.1	2	0.9
Sydney-Wagga Wagga								
QantasLink	114	113	96	85.0	90	79.6	1	0.9
Rex Airlines	95	93	61	65.6	62	66.7	2	2.1
All Airlines	209	206	157	76.2	152	73.8	3	1.4
Townsville-Brisbane								
Jetstar	68	66	51	77.3	51	77.3	2	2.9
Qantas	40	40	38	95.0	38	95.0	0	0.0
QantasLink	136	134	125	93.3	126	94.0	2	1.5
Virgin Australia	138	138	131	94.9	130	94.2	0	0.0
All Airlines	382	378	345	91.3	345	91.3	4	1.0
Wagga Wagga-Sydney								
QantasLink	114	113	94	83.2	93	82.3	1	0.9
Rex Airlines	97	94	59	62.8	69	73.4	3	3.1
All Airlines	211	207	153	73.9	162	78.3	4	1.9

Airports

The following data reports by airport against flights operated on published routes only. This month, 8 major city airports and 29 regional city airports are covered.

Airport	Arrivals			Departures		
	Sectors	On Time		Sectors	On Time	
	Flown	No.	%	Flown	No.	%
Adelaide						
Jetstar	410	288	70.2	410	293	71.5
Qantas	610	484	79.3	612	495	80.9
QantasLink	447	386	86.4	447	408	91.3
Rex Airlines	133	90	67.7	134	94	70.1
Virgin Australia	700	532	76.0	700	520	74.3
All Airlines	2,300	1,780	77.4	2,303	1,810	78.6
Relates to services to and from Alice Springs, Brisbane, Canberra, Gold Coast, Melbourne, Perth, Port Lincoln and Sydney only.						
Albury						
QantasLink	97	65	67.0	97	69	71.1
Rex Airlines	79	53	67.1	78	58	74.4
All Airlines	176	118	67.0	175	127	72.6
Relates to services to and from Sydney only.						
Alice Springs						
QantasLink	31	29	93.5	31	29	93.5
Virgin Australia	13	8	61.5	13	5	38.5
All Airlines	44	37	84.1	44	34	77.3
Relates to services to and from Adelaide only.						
Ayers Rock						
Jetstar	19	18	94.7	19	17	89.5
Virgin Australia	13	7	53.8	13	6	46.2
All Airlines	32	25	78.1	32	23	71.9
Relates to services to and from Melbourne only.						
Ballina						
Jetstar	75	62	82.7	76	62	81.6
QantasLink	56	37	66.1	55	42	76.4
Virgin Australia	31	26	83.9	31	22	71.0
All Airlines	162	125	77.2	162	126	77.8
Relates to services to and from Sydney only.						
Brisbane						
Jetstar	819	578	70.6	821	574	69.9
Qantas	1,183	957	80.9	1,184	1,000	84.5
QantasLink	1,462	1,290	88.2	1,468	1,284	87.5
Virgin Australia	2,180	1,749	80.2	2,181	1,782	81.7
All Airlines	5,644	4,574	81.0	5,654	4,640	82.1
Relates to services to and from Adelaide, Cairns, Canberra, Darwin, Emerald, Gladstone, Hamilton Island, Hobart, Launceston, Mackay, Melbourne, Mount Isa, Newcastle, Perth, Proserpine, Rockhampton, Sydney and Townsville only.						

Airport	Arrivals			Departures		
	Sectors Flown	On Time		Sectors Flown	On Time	
		No.	%		No.	%
Broome						
QantasLink	81	76	93.8	81	74	91.4
Virgin Australia	43	40	93.0	42	38	90.5
Virgin Australia Regional Airlines	10	8	80.0	10	5	50.0
All Airlines	134	124	92.5	133	117	88.0
Relates to services to and from Perth only.						
Cairns						
Jetstar	252	182	72.2	247	181	73.3
Qantas	116	94	81.0	115	103	89.6
QantasLink	130	108	83.1	129	114	88.4
Virgin Australia	239	208	87.0	238	187	78.6
All Airlines	737	592	80.3	729	585	80.2
Relates to services to and from Brisbane, Melbourne and Sydney only.						
Canberra						
Jetstar	76	61	80.3	76	47	61.8
Qantas	6	3	50.0	6	4	66.7
QantasLink	895	720	80.4	881	707	80.2
Virgin Australia	516	444	86.0	516	443	85.9
All Airlines	1,493	1,228	82.3	1,479	1,201	81.2
Relates to services to and from Adelaide, Brisbane, Gold Coast, Melbourne and Sydney only.						
Coffs Harbour						
QantasLink	110	80	72.7	106	82	77.4
Rex Airlines	83	58	69.9	83	56	67.5
All Airlines	193	138	71.5	189	138	73.0
Relates to services to and from Sydney only.						
Darwin						
Jetstar	38	30	78.9	38	25	65.8
Qantas	73	58	79.5	73	65	89.0
QantasLink	20	19	95.0	19	18	94.7
Virgin Australia	61	53	86.9	60	51	85.0
Virgin Australia Regional Airlines	8	3	37.5	8	5	62.5
All Airlines	200	163	81.5	198	164	82.8
Relates to services to and from Brisbane, Melbourne and Perth only.						
Devonport						
QantasLink	95	73	76.8	94	74	78.7
Rex Airlines	48	36	75.0	48	34	70.8
All Airlines	143	109	76.2	142	108	76.1
Relates to services to and from Melbourne only.						
Dubbo						
QantasLink	111	80	72.1	111	84	75.7
Rex Airlines	101	70	69.3	104	71	68.3
All Airlines	212	150	70.8	215	155	72.1
Relates to services to and from Sydney only.						
Emerald						
QantasLink	123	107	87.0	122	110	90.2
Virgin Australia	27	26	96.3	27	26	96.3
All Airlines	150	133	88.7	149	136	91.3
Relates to services to and from Brisbane only.						

Airport	Arrivals			Departures		
	Sectors Flown	On Time		Sectors Flown	On Time	
		No.	%		No.	%
Gladstone						
QantasLink	126	110	87.3	124	108	87.1
Virgin Australia	35	29	82.9	35	31	88.6
All Airlines	161	139	86.3	159	139	87.4
Relates to services to and from Brisbane only.						
Gold Coast						
Jetstar	460	351	76.3	458	349	76.2
Qantas	154	119	77.3	153	116	75.8
QantasLink	58	44	75.9	58	36	62.1
Virgin Australia	619	474	76.6	618	421	68.1
All Airlines	1,291	988	76.5	1,287	922	71.6
Relates to services to and from Adelaide, Canberra, Melbourne and Sydney only.						
Hamilton Island						
Qantas	31	20	64.5	31	18	58.1
QantasLink	26	21	80.8	26	20	76.9
Virgin Australia	55	37	67.3	55	26	47.3
All Airlines	112	78	69.6	112	64	57.1
Relates to services to and from Brisbane and Sydney only.						
Hobart						
Jetstar	292	192	65.8	292	182	62.3
Qantas	38	32	84.2	38	30	78.9
QantasLink	197	136	69.0	196	149	76.0
Virgin Australia	247	202	81.8	247	185	74.9
All Airlines	774	562	72.6	773	546	70.6
Relates to services to and from Brisbane, Melbourne and Sydney only.						
Kalgoorlie						
Qantas	7	7	100.0	7	7	100.0
QantasLink	71	64	90.1	71	61	85.9
Virgin Australia	99	79	79.8	99	71	71.7
Virgin Australia Regional Airlines	5	4	80.0	5	4	80.0
All Airlines	182	154	84.6	182	143	78.6
Relates to services to and from Perth only.						
Karratha						
Qantas	13	12	92.3	12	10	83.3
QantasLink	169	146	86.4	166	138	83.1
Virgin Australia	62	54	87.1	62	58	93.5
Virgin Australia Regional Airlines	16	15	93.8	16	13	81.3
All Airlines	260	227	87.3	256	219	85.5
Relates to services to and from Perth only.						
Launceston						
Jetstar	177	133	75.1	177	129	72.9
QantasLink	146	96	65.8	144	103	71.5
Virgin Australia	142	109	76.8	142	95	66.9
All Airlines	465	338	72.7	463	327	70.6
Relates to services to and from Brisbane, Melbourne and Sydney only.						

Airport	Arrivals			Departures		
	Sectors	On Time		Sectors	On Time	
	Flown	No.	%	Flown	No.	%
Mackay						
Jetstar	28	14	50.0	28	16	57.1
Qantas	9	9	100.0	9	9	100.0
QantasLink	178	159	89.3	183	175	95.6
Virgin Australia	130	115	88.5	130	123	94.6
All Airlines	345	297	86.1	350	323	92.3

Relates to services to and from Brisbane only.

Melbourne

Jetstar	1,646	1,122	68.2	1,652	1,058	64.0
Qantas	1,734	1,335	77.0	1,726	1,393	80.7
QantasLink	902	660	73.2	906	675	74.5
Rex Airlines	152	82	53.9	153	96	62.7
Virgin Australia	2,583	1,988	77.0	2,589	2,069	79.9
All Airlines	7,017	5,187	73.9	7,026	5,291	75.3

Relates to services to and from Adelaide, Ayers Rock, Brisbane, Cairns, Canberra, Darwin, Devonport, Gold Coast, Hobart, Launceston, Mildura, Newcastle, Perth, Sunshine Coast and Sydney only.

Mildura

QantasLink	92	55	59.8	92	67	72.8
Rex Airlines	105	58	55.2	104	55	52.9
All Airlines	197	113	57.4	196	122	62.2

Relates to services to and from Melbourne only.

Mount Isa

Qantas	43	43	100.0	43	41	95.3
QantasLink	14	14	100.0	14	14	100.0
Virgin Australia	13	10	76.9	13	9	69.2
All Airlines	70	67	95.7	70	64	91.4

Relates to services to and from Brisbane only.

Newcastle

Jetstar	120	101	84.2	119	94	79.0
QantasLink	141	116	82.3	141	125	88.7
Virgin Australia	127	104	81.9	126	100	79.4
All Airlines	388	321	82.7	386	319	82.6

Relates to services to and from Brisbane and Melbourne only.

Newman

Qantas	5	5	100.0	4	4	100.0
QantasLink	132	125	94.7	132	120	90.9
Virgin Australia	55	49	89.1	55	45	81.8
Virgin Australia Regional Airlines	4	3	75.0	4	4	100.0
All Airlines	196	182	92.9	195	173	88.7

Relates to services to and from Perth only.

Airport	Arrivals			Departures		
	Sectors	On Time		Sectors	On Time	
	Flown	No.	%	Flown	No.	%
Perth						
Jetstar	203	143	70.4	195	131	67.2
Qantas	737	537	72.9	738	605	82.0
QantasLink	613	526	85.8	617	560	90.8
Virgin Australia	960	677	70.5	954	801	84.0
Virgin Australia Regional Airlines	52	37	71.2	52	40	76.9
All Airlines	2,565	1,920	74.9	2,556	2,137	83.6
Relates to services to and from Adelaide, Brisbane, Broome, Darwin, Kalgoorlie, Karratha, Melbourne, Newman, Port Hedland and Sydney only.						
Port Hedland						
Qantas	5	4	80.0	5	4	80.0
QantasLink	144	116	80.6	144	119	82.6
Virgin Australia	49	45	91.8	49	42	85.7
Virgin Australia Regional Airlines	9	7	77.8	9	2	22.2
All Airlines	207	172	83.1	207	167	80.7
Relates to services to and from Perth only.						
Port Lincoln						
QantasLink	100	91	91.0	100	94	94.0
Rex Airlines	134	91	67.9	133	91	68.4
All Airlines	234	182	77.8	233	185	79.4
Relates to services to and from Adelaide only.						
Port Macquarie						
QantasLink	111	86	77.5	110	91	82.7
Rex Airlines	53	28	52.8	52	27	51.9
All Airlines	164	114	69.5	162	118	72.8
Relates to services to and from Sydney only.						
Proserpine						
Jetstar	42	26	61.9	42	29	69.0
Virgin Australia	31	23	74.2	31	20	64.5
All Airlines	73	49	67.1	73	49	67.1
Relates to services to and from Brisbane only.						
Rockhampton						
QantasLink	181	158	87.3	179	156	87.2
Virgin Australia	164	132	80.5	162	138	85.2
All Airlines	345	290	84.1	341	294	86.2
Relates to services to and from Brisbane only.						
Sunshine Coast						
Jetstar	167	118	70.7	167	107	64.1
Qantas	7	6	85.7	7	5	71.4
QantasLink	91	41	45.1	90	47	52.2
Virgin Australia	136	105	77.2	136	102	75.0
All Airlines	401	270	67.3	400	261	65.3
Relates to services to and from Melbourne and Sydney only.						

Airport	Arrivals			Departures		
	Sectors	On Time		Sectors	On Time	
	Flown	No.	%	Flown	No.	%
Sydney						
Jetstar	1,449	1,047	72.3	1,456	1,026	70.5
Qantas	2,005	1,448	72.2	2,012	1,549	77.0
QantasLink	1,175	880	74.9	1,192	846	71.0
Rex Airlines	411	258	62.8	409	258	63.1
Virgin Australia	2,459	1,813	73.7	2,465	1,846	74.9
All Airlines	7,499	5,446	72.6	7,534	5,525	73.3

Relates to services to and from Adelaide, Albury, Ballina, Brisbane, Cairns, Canberra, Coffs Harbour, Dubbo, Gold Coast, Hamilton Island, Hobart, Launceston, Melbourne, Perth, Port Macquarie, Sunshine Coast and Wagga Wagga only.

Townsville

Jetstar	66	50	75.8	66	51	77.3
Qantas	39	36	92.3	40	38	95.0
QantasLink	135	118	87.4	134	126	94.0
Virgin Australia	138	127	92.0	138	130	94.2
All Airlines	378	331	87.6	378	345	91.3

Relates to services to and from Brisbane only.

Wagga Wagga

QantasLink	113	96	85.0	113	93	82.3
Rex Airlines	93	61	65.6	94	69	73.4
All Airlines	206	157	76.2	207	162	78.3

Relates to services to and from Sydney only.

Definitions

On time arrival	A flight arrival is counted as "on time" if it arrived at the gate before 15 minutes after the scheduled arrival time shown in the carriers' schedule. Neither diverted nor cancelled flights count as on time.
On time departure	A flight departure is counted as "on time" if it departs the gate before 15 minutes after the scheduled departure time shown in the carriers' schedule.
Cancellation	A flight removed from service within 7 days of scheduled departure is regarded as a cancellation.
On time departure percentage	The percentage of on time departures is measured against the number of departures <i>operated</i> on any particular sector.
On time arrival percentage	The percentage of on time arrivals is measured against the number of arrivals <i>operated</i> on any particular sector.
Cancellation percentage	The percentage of cancellations is measured against the number of services <i>scheduled</i> on any particular sector.

Airlines and Reporting

Data has been gathered since November 2003, although some airlines commenced reporting at a later date, including Jetstar which first reported in May 2004, Tigerair Australia in April 2008, Virgin Australia Regional Airlines in May 2013, Skytrans Australia in May 2023, Bonza in November 2023 and Hinterland in March 2024. Tigerair Australia ceased operations in March 2020 and data was not received for that month. Bonza ceased operations at the end of April 2024 and data was not received for that month.

Virgin Blue was rebranded as Virgin Australia in May 2011 and Tiger Airways was rebranded as Tigerair Australia in August 2013. Skytrans was rebranded as SmartLynx Australia in July 2025 and then rebranded as Skytrans Australia in February 2026. Time series data in Microsoft Excel spreadsheet format on the BITRE website have been revised to reflect these changes. With effect from August 2021, Regional Express is reported as Rex Airlines. Rex Airlines commenced jet services between selected major cities in March 2021. These domestic jet services ceased in July 2024.

Services operated by Skywest on behalf of Virgin Australia using ATR/F100 aircraft commenced in November 2011 and were shown separately as Virgin Australia – ATR/F100 Operations. Virgin Australia Regional Airlines commenced operations in May 2013. It was formed after the acquisition of Skywest by Virgin Australia and represented a combination of operations previously reported under Skywest and Virgin Australia – ATR/F100 Operations. In February 2016, Virgin Australia transferred their ATR fleet from Virgin Australia Regional Airlines to Virgin Australia.