



Australian Government

Department of Infrastructure, Transport,  
Regional Development, Communications, Sport and the Arts

Bureau of Infrastructure and Transport Research Economics  
STATISTICAL REPORT



# Aviation

**Domestic airline on time performance**  
**April 2026**

The Department of Infrastructure, Transport, Regional Development, Communications, Sport and the Arts acknowledges the Traditional Custodians of country throughout Australia and their connections to land, sea and community.

We pay our respect to their Elders past and present and extend that respect to all Aboriginal and Torres Strait Islander people.

---

© Commonwealth of Australia 2026

ISSN: 1832-0759

BITRE reference: 2026-049

### **Ownership of intellectual property rights in this publication**

Unless otherwise noted, copyright (and any other intellectual property rights, if any) in this publication is owned by the Commonwealth of Australia (referred to below as the Commonwealth).

### **Disclaimer**

The material contained in this publication is made available on the understanding that the Commonwealth is not providing professional advice, and that users exercise their own skill and care with respect to its use, and seek independent advice if necessary.

The Commonwealth makes no representations or warranties as to the contents or accuracy of the information contained in this publication. To the extent permitted by law, the Commonwealth disclaims liability to any person or organisation in respect of anything done, or omitted to be done, in reliance upon information contained in this publication.

### **Creative Commons licence**

With the exception of (a) the Coat of Arms; and (b) the Department of Infrastructure, Transport, Regional Development, Communications, Sport and the Arts' photos and graphics, copyright in this publication is licensed under a Creative Commons Attribution 4.0 Australia Licence.

Creative Commons Attribution 4.0 Australia Licence is a standard form licence agreement that allows you to copy, communicate and adapt this publication provided that you attribute the work to the Commonwealth and abide by the other licence terms. A summary of the licence terms is available from <https://creativecommons.org/licenses/by/4.0/>. The full licence terms are available from <https://creativecommons.org/licenses/by/4.0/legalcode.en>.

### **Use of the Coat of Arms**

The Department of the Prime Minister and Cabinet sets the terms under which the Coat of Arms is used. Please refer to the Department's Commonwealth Coat of Arms and Government branding web page <http://www.dpmc.gov.au/guidelines/index.cfm#brand> and, in particular, the Guidelines on the use of the Commonwealth Coat of Arms publication.

An appropriate citation for this report is:

Bureau of Infrastructure and Transport Research Economics (BITRE), 2026, Domestic airline on time performance, Statistical Report, BITRE, Canberra ACT.

### **Contact us**

All other rights are reserved, including in relation to any departmental logos or trade marks which may exist. For enquiries regarding the licence and any use of this publication, please contact:

Bureau of Infrastructure and Transport Research Economics (BITRE)  
Department of Infrastructure, Transport, Regional Development, Communications, Sport and the Arts  
GPO Box 501, Canberra ACT 2601, Australia  
Telephone: (international) +61 2 6136 8687  
Email: [bitre@infrastructure.gov.au](mailto:bitre@infrastructure.gov.au)  
Website: [www.bitre.gov.au](http://www.bitre.gov.au)

### **Inquiries**

Should you require additional information about the statistics contained in this publication:

Telephone: (02) 6136 7250

Email: [AVSTATS@infrastructure.gov.au](mailto:AVSTATS@infrastructure.gov.au)

Website: <http://www.bitre.gov.au/statistics/aviation/otphome.aspx>

# Foreword

The Bureau of Infrastructure and Transport Research Economics (BITRE) monitors the punctuality and reliability of major domestic airlines operating between Australian airports. The purpose of this is to allow for evaluation of overall industry and individual airline performance, so that consumers of air travel can make informed decisions.

The following domestic airlines currently report this information monthly to the BITRE: Hinterland, Jetstar, Qantas, QantasLink, Rex Airlines, Skytrans Australia (formerly SmartLynx Australia), Virgin Australia and Virgin Australia Regional Airlines.

Information presented in this report is for Australian domestic routes for which the passenger load averaged 8,000 or more passengers per month over the previous six months and where two or more airlines operated in competition on those routes. Data are presented for 59 routes in April 2026. Over time, routes which meet these criteria change as airline networks and traffic levels vary. Participating airlines report their overall monthly network performance where this is possible.

Total industry figures encompass all services operated by reporting airlines only. These airlines collectively carried over 98% of total domestic passengers (regular public transport only) in 2025.

The method of capturing on time performance varies between airlines utilising different recording systems. Jetstar and Qantas jet aircraft use Aircraft Communication Addressing and Reporting System (ACARS) to electronically measure on time performance. Rex Airlines, Virgin Australia, Virgin Australia Regional Airlines and the Qantas non-jet fleet record on time performance manually using records from pilots, gate agents and/or ground crews.

After initial data is collected, aggregate reports are reviewed by participating airlines prior to publication.

Reports and detailed time series data in Microsoft Excel spreadsheet format are available from the BITRE website at: <http://www.bitre.gov.au/statistics/aviation/otphome.aspx>



# Contents

|                              | Page |
|------------------------------|------|
| Industry performance .....   | 1    |
| Individual routes .....      | 10   |
| Airports.....                | 22   |
| Definitions .....            | 28   |
| Airlines and Reporting ..... | 29   |

# Industry performance

For April 2026, on time performance over all routes operated by participating airlines (Hinterland, Jetstar, Qantas, QantasLink, Rex Airlines, Skytrans Australia (formerly SmartLynx Australia), Virgin Australia and Virgin Australia Regional Airlines) averaged 82.9% for on time arrivals and 82.6% for on time departures. The cancellation rate for the month was 1.9%. The equivalent figures for April 2025 were 82.4% for on time arrivals, 82.2% for on time departures and 2.0% for cancellations.

This month's on time arrivals figure was higher than the long term average (average over the period of OTP reporting starting in November 2003) performance for all routes (80.5%) and the on time departures figure was also higher than the long term average (81.6%). The rate of cancellations was lower than the long term average of 2.2%.

## On time arrivals

The Qantas network (Qantas and QantasLink combined operations) recorded 85.8% for on time arrivals while the Virgin Australia network (Virgin Australia and Virgin Australia Regional Airlines combined operations) recorded 83.4%. Hinterland achieved the highest on time arrivals at 92.1%, followed by QantasLink at 86.4%, Qantas at 84.7%, Virgin Australia at 83.5%, Jetstar at 78.3%, Rex Airlines at 74.6%, Skytrans Australia at 73.1% and Virgin Australia Regional Airlines at 71.2%.

## On time departures

The Qantas network recorded 85.8% for on time departures while the Virgin Australia network recorded 83.4%. Hinterland achieved the highest level of on time departures for April 2026 at 95.7%, followed by Qantas at 87.0%, QantasLink at 85.2%, Virgin Australia at 83.6%, Skytrans Australia at 78.6%, Rex Airlines at 76.7%, Jetstar at 75.0% and Virgin Australia Regional Airlines at 69.9%.

## Cancellations

Rex Airlines recorded the highest percentage of cancellations at 3.8% during the month. The second highest cancellation rate was from QantasLink at 2.4%, Skytrans Australia at 2.2%, Jetstar at 2.0%, Qantas at 1.9%, Virgin Australia Regional Airlines at 1.4%, Virgin Australia at 0.8% and Hinterland at 0.6%.

## Routes

Airlines' on time performance varies across the routes they serve. Individual route data by specific airline for 59 routes (118 sectors when counting both directions of flights) are shown on pages 10-21.

Of the 59 routes which met the criteria<sup>1</sup> for on time performance reporting in April 2026, the Brisbane-Mount Isa sector had the highest percentage of on time arrivals (95.6%) and the

1. Australian domestic routes for which the passenger load averaged 8,000 or more passengers per month over the previous six months and where two or more airlines operated in competition on those routes.

highest percentage of on time departures (95.6%). The Hamilton Island-Sydney sector had the lowest percentage of on time arrivals (68.3%) and the lowest percentage of on time departures (65.1%).

Cancellations were highest on the Sydney-Dubbo sector at 11.4%, followed by the Dubbo-Sydney sector at 9.4%, the Adelaide-Port Lincoln sector at 6.1%, the Port Lincoln-Adelaide sector at 5.8%, the Port Macquarie-Sydney sector at 4.9%, the Sydney-Port Macquarie sector at 4.7%, the Sydney-Melbourne sector at 4.6%, and the Canberra-Sydney sector at 4.4%.

For the month of April 2026 there were 31 out of the 118 route sectors (from the 59 routes) that had zero cancellations: Adelaide-Alice Springs, Adelaide-Canberra, Adelaide-Gold Coast, Alice Springs-Adelaide, Ayers Rock-Melbourne, Brisbane-Cairns, Brisbane-Darwin, Brisbane-Hamilton Island, Brisbane-Hobart, Brisbane-Launceston, Brisbane-Mount Isa, Brisbane-Proserpine, Broome-Perth, Cairns-Brisbane, Canberra-Adelaide, Canberra-Gold Coast, Darwin-Melbourne, Darwin-Perth, Gold Coast-Adelaide, Gold Coast-Canberra, Hamilton Island-Brisbane, Hamilton Island-Sydney, Hobart-Brisbane, Launceston-Brisbane, Melbourne-Ayers Rock, Melbourne-Darwin, Melbourne-Sunshine Coast, Perth-Brisbane, Perth-Broome, Perth-Darwin, Sydney-Hamilton Island.

## **Airports**

Mount Isa Airport recorded the highest percentage of on time arrivals (95.6%) and the highest percentage of on time departures (94.1%). Port Lincoln Airport recorded the lowest percentage of on time arrivals (72.9%) while Launceston Airport had the lowest percentage of on time departures (71.5%). These figures only refer to reported routes and do not cover all flights at these airports.

Table 1 On time performance for April 2026 — Total Industry

|   | <i>Sectors</i>   |              | <i>Arrivals On Time</i> |          | <i>Departures On Time</i> |          | <i>Cancellations</i> |          |
|---|------------------|--------------|-------------------------|----------|---------------------------|----------|----------------------|----------|
|   | <i>Scheduled</i> | <i>Flown</i> | <i>No.</i>              | <i>%</i> | <i>No.</i>                | <i>%</i> | <i>No.</i>           | <i>%</i> |
| Hinterland                                    | 1,549            | 1,540        | 1,419                   | 92.1     | 1,474                     | 95.7     | 9                    | 0.6      |
| Jetstar                                       | 8,907            | 8,727        | 6,832                   | 78.3     | 6,545                     | 75.0     | 180                  | 2.0      |
| Qantas - all QF designated services           | 19,533           | 19,103       | 16,389                  | 85.8     | 16,394                    | 85.8     | 430                  | 2.2      |
| Rex Airlines                                  | 4,236            | 4,075        | 3,041                   | 74.6     | 3,126                     | 76.7     | 161                  | 3.8      |
| Skytrans Australia                            | 277              | 271          | 198                     | 73.1     | 213                       | 78.6     | 6                    | 2.2      |
| Virgin Australia - all VA designated services | 12,018           | 11,916       | 9,937                   | 83.4     | 9,942                     | 83.4     | 102                  | 0.8      |
| All Airlines                                  | 46,520           | 45,632       | 37,816                  | 82.9     | 37,694                    | 82.6     | 888                  | 1.9      |
| Individual operating entities                 |                  |              |                         |          |                           |          |                      |          |
| Qantas  | 7,037            | 6,906        | 5,848                   | 84.7     | 6,007                     | 87.0     | 131                  | 1.9      |
| QantasLink                                    | 12,496           | 12,197       | 10,541                  | 86.4     | 10,387                    | 85.2     | 299                  | 2.4      |
| Virgin Australia                              | 11,870           | 11,770       | 9,833                   | 83.5     | 9,840                     | 83.6     | 100                  | 0.8      |
| Virgin Australia Regional Airlines            | 148              | 146          | 104                     | 71.2     | 102                       | 69.9     | 2                    | 1.4      |

Total airline network data (including routes not shown in this report).

Airlines’ on time performance varies across the routes they serve. Individual route data by specific airline are shown on page 10 and onwards.

Table 2 Top ten routes for on time performance for April 2026 (participating airlines only)

| <i>Arrivals</i>      |                    | <i>Departures</i>    |                    |
|----------------------|--------------------|----------------------|--------------------|
| <i>Route</i>         | <i>On Time (%)</i> | <i>Route</i>         | <i>On Time (%)</i> |
| Brisbane-Mount Isa   | 95.6               | Brisbane-Mount Isa   | 95.6               |
| Brisbane-Darwin      | 95.0               | Darwin-Brisbane      | 94.9               |
| Emerald-Brisbane     | 92.8               | Brisbane-Hobart      | 94.6               |
| Mackay-Brisbane      | 92.7               | Mount Isa-Brisbane   | 94.1               |
| Canberra-Sydney      | 92.2               | Melbourne-Ayers Rock | 94.1               |
| Canberra-Adelaide    | 91.6               | Mackay-Brisbane      | 93.0               |
| Newcastle-Brisbane   | 91.6               | Brisbane-Launceston  | 92.7               |
| Melbourne-Ayers Rock | 91.2               | Perth-Karratha       | 92.6               |
| Brisbane-Proserpine  | 90.8               | Perth-Kalgoorlie     | 92.6               |
| Brisbane-Emerald     | 90.6               | Perth-Adelaide       | 92.3               |

Table 3 Top ten airports for on time performance for April 2026 (participating airlines and reported routes only)

| <i>Arrivals</i> |                    | <i>Departures</i> |                    |
|-----------------|--------------------|-------------------|--------------------|
| <i>Airport</i>  | <i>On Time (%)</i> | <i>Airport</i>    | <i>On Time (%)</i> |
| Mount Isa       | 95.6               | Mount Isa         | 94.1               |
| Ayers Rock      | 91.2               | Mackay            | 93.0               |
| Proserpine      | 90.8               | Proserpine        | 92.1               |
| Emerald         | 90.6               | Emerald           | 91.4               |
| Mackay          | 90.6               | Gladstone         | 89.3               |
| Newcastle       | 90.2               | Townsville        | 89.2               |
| Townsville      | 89.7               | Newcastle         | 89.1               |
| Darwin          | 87.9               | Cairns            | 87.3               |
| Cairns          | 87.8               | Perth             | 87.3               |
| Canberra        | 87.8               | Canberra          | 87.2               |

## Total industry on time performance

Figure 1 On time performance (by month from Apr 2023)—Total Industry

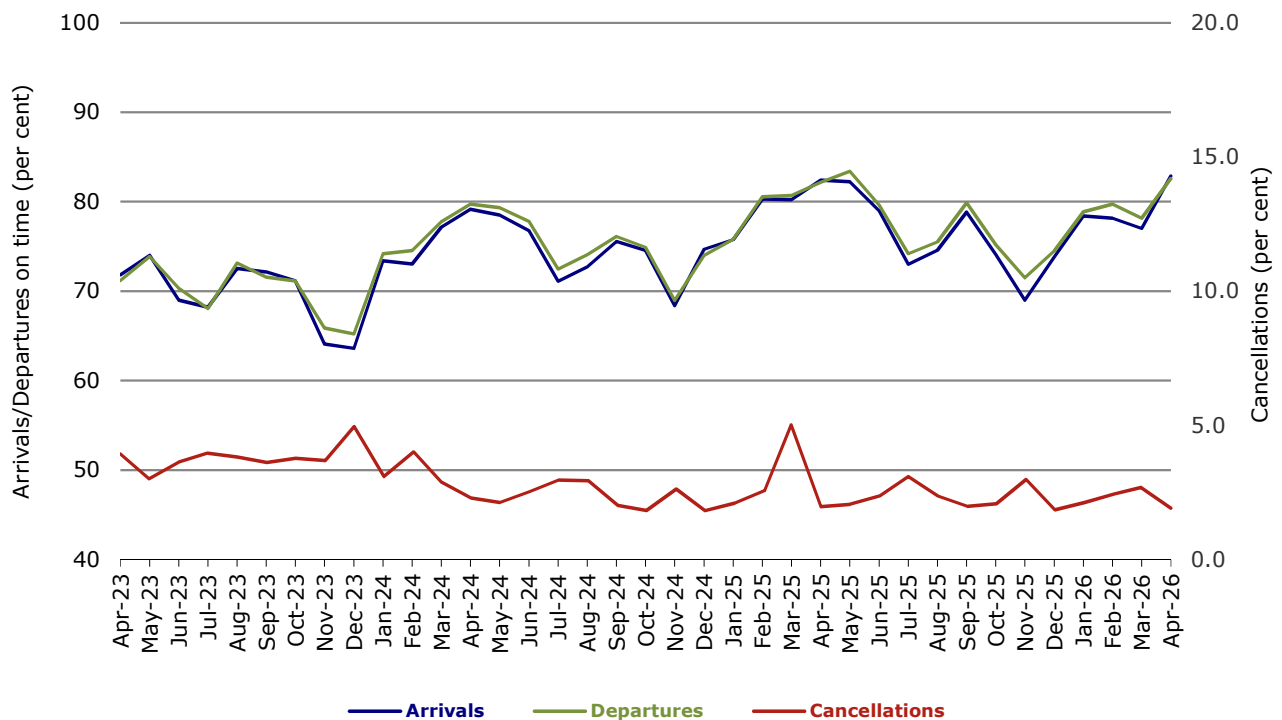


Figure 2 Arrivals on time (by month from Apr 2025)

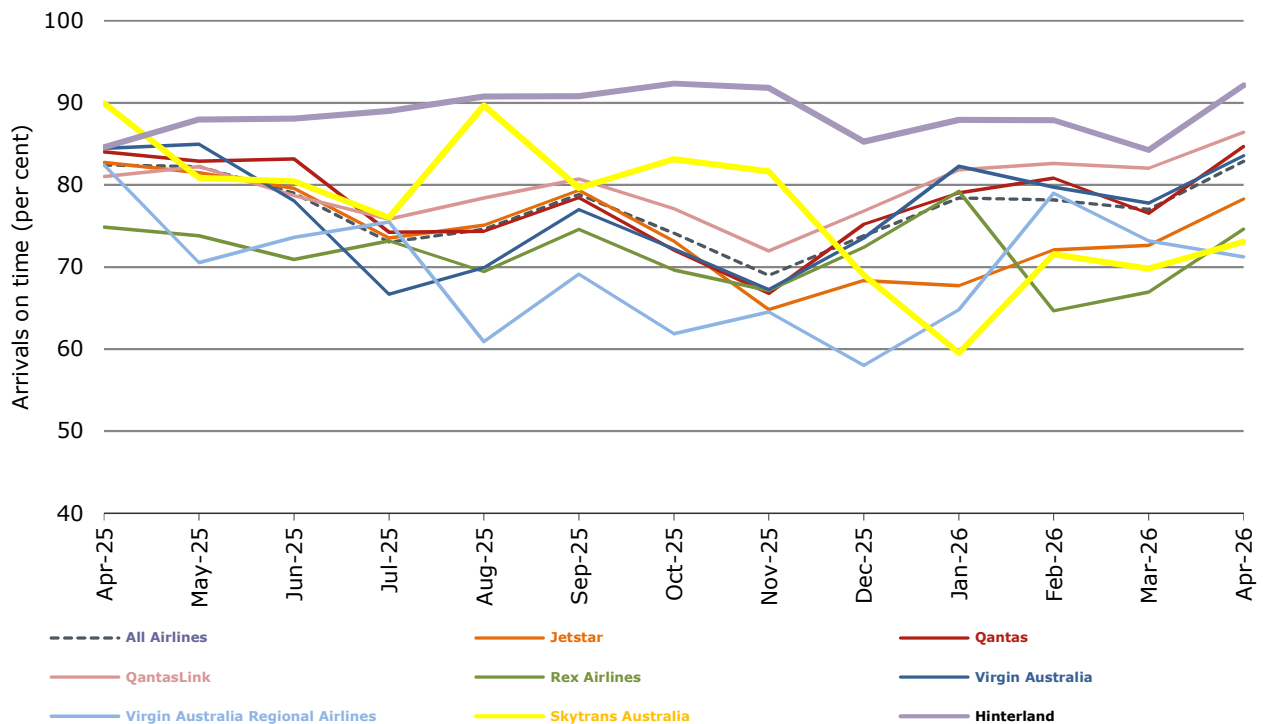


Figure 3 Departures on time (by month from Apr 2025)

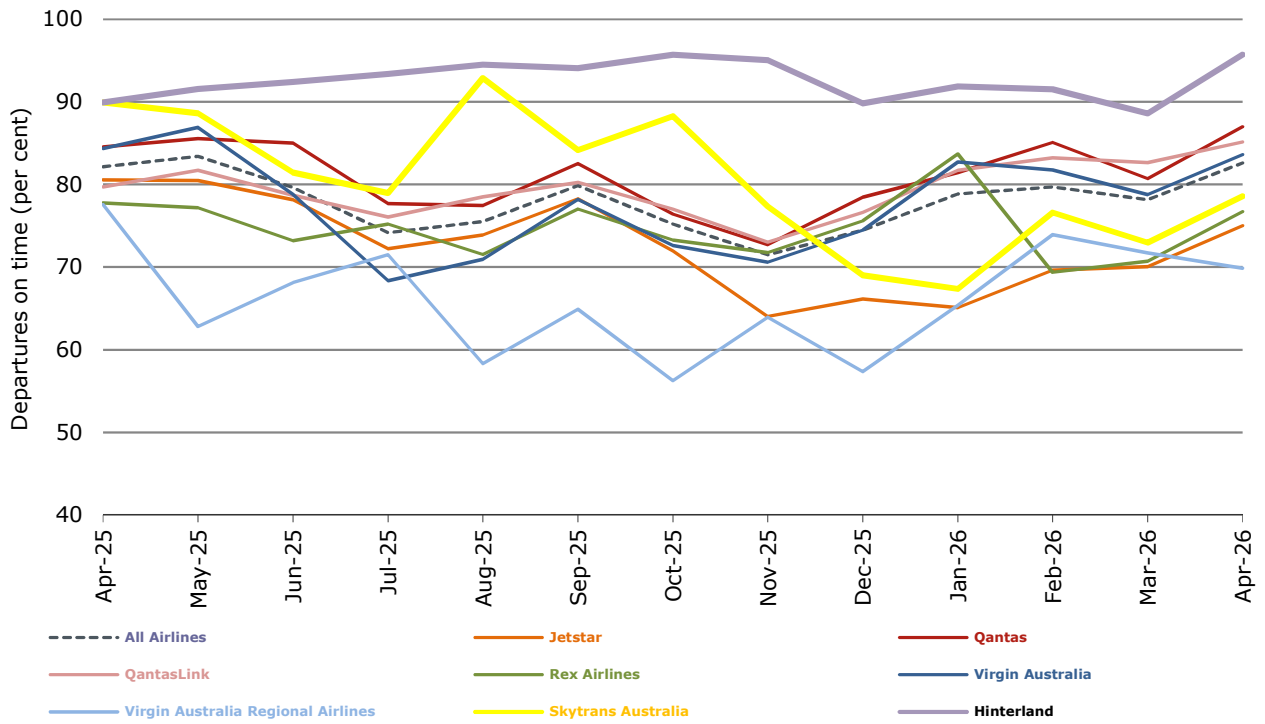
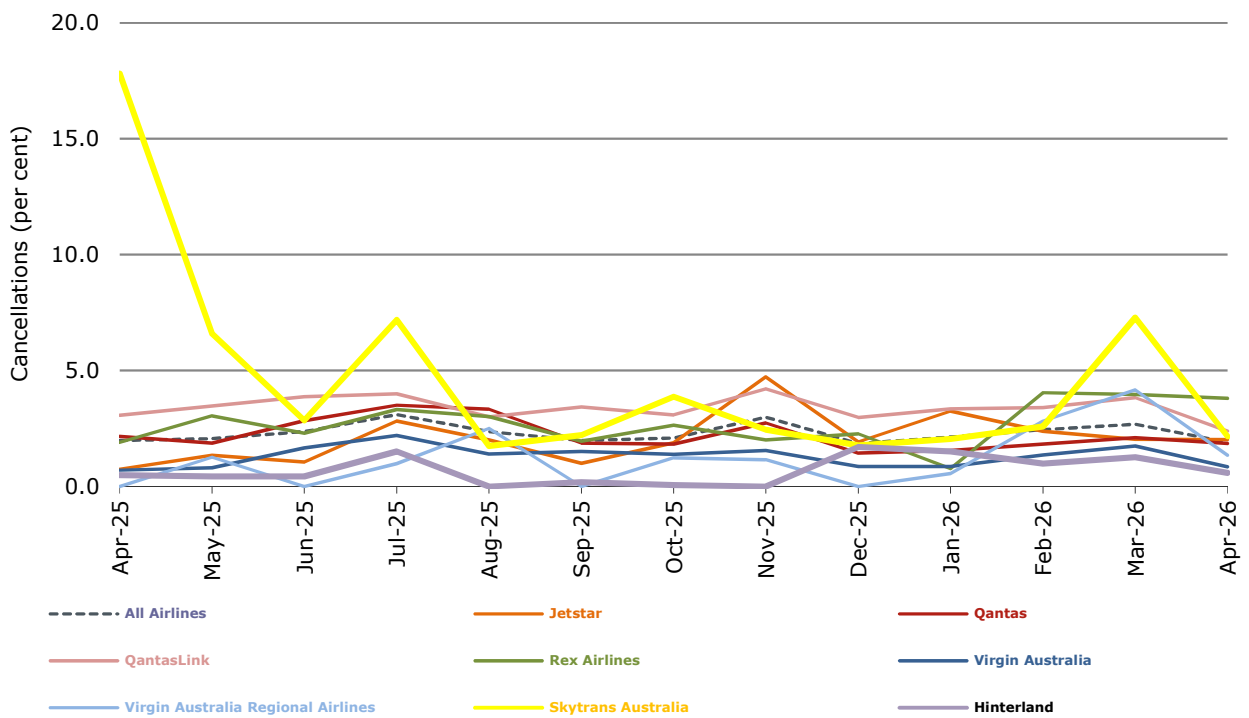


Figure 4 Cancellations (by month from Apr 2025)



## Airlines on time performance

Figure 5 On time performance (by month from Apr 2023)—Jetstar

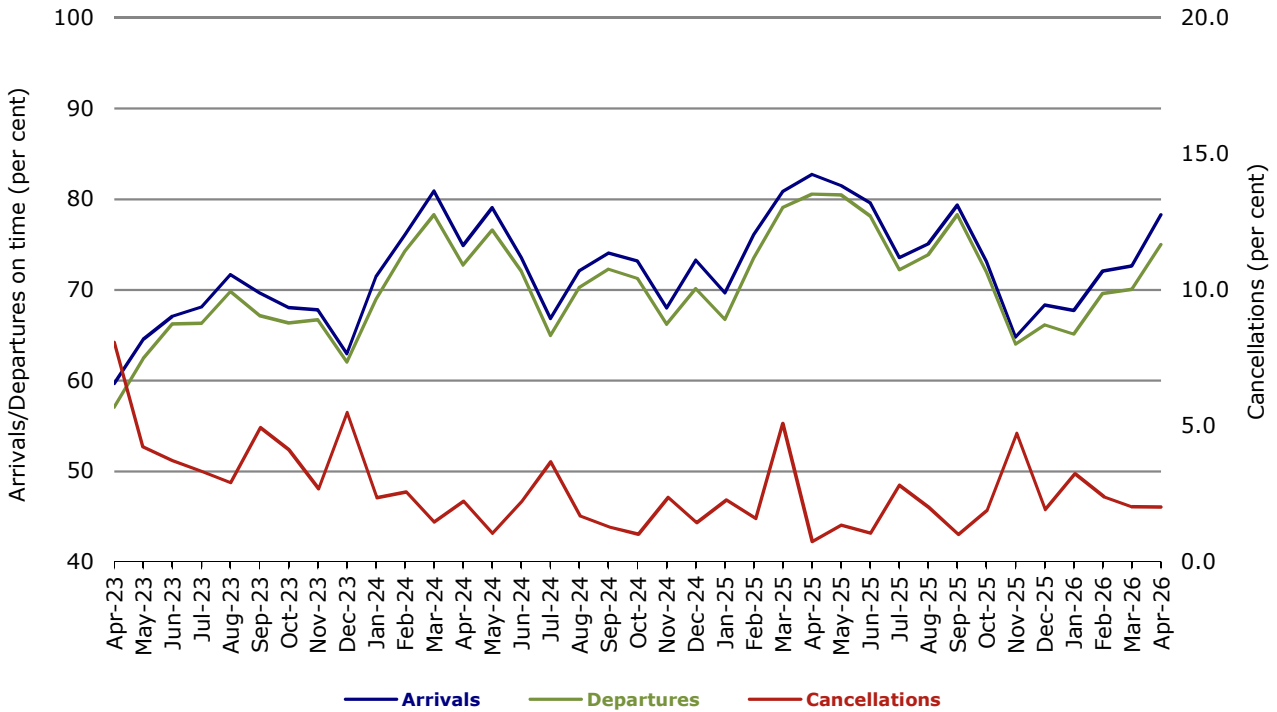


Figure 6 On time performance (by month from Apr 2023)—Qantas

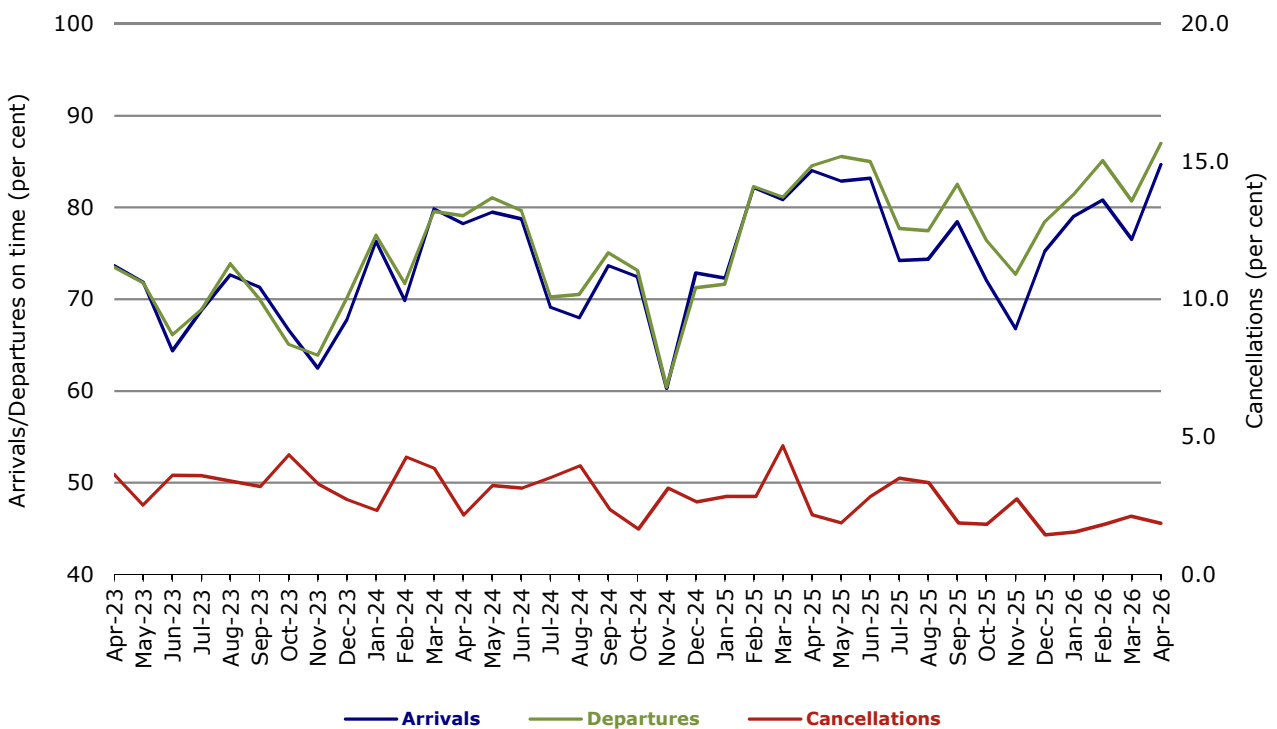


Figure 7 On time performance (by month from Apr 2023)—Virgin Australia

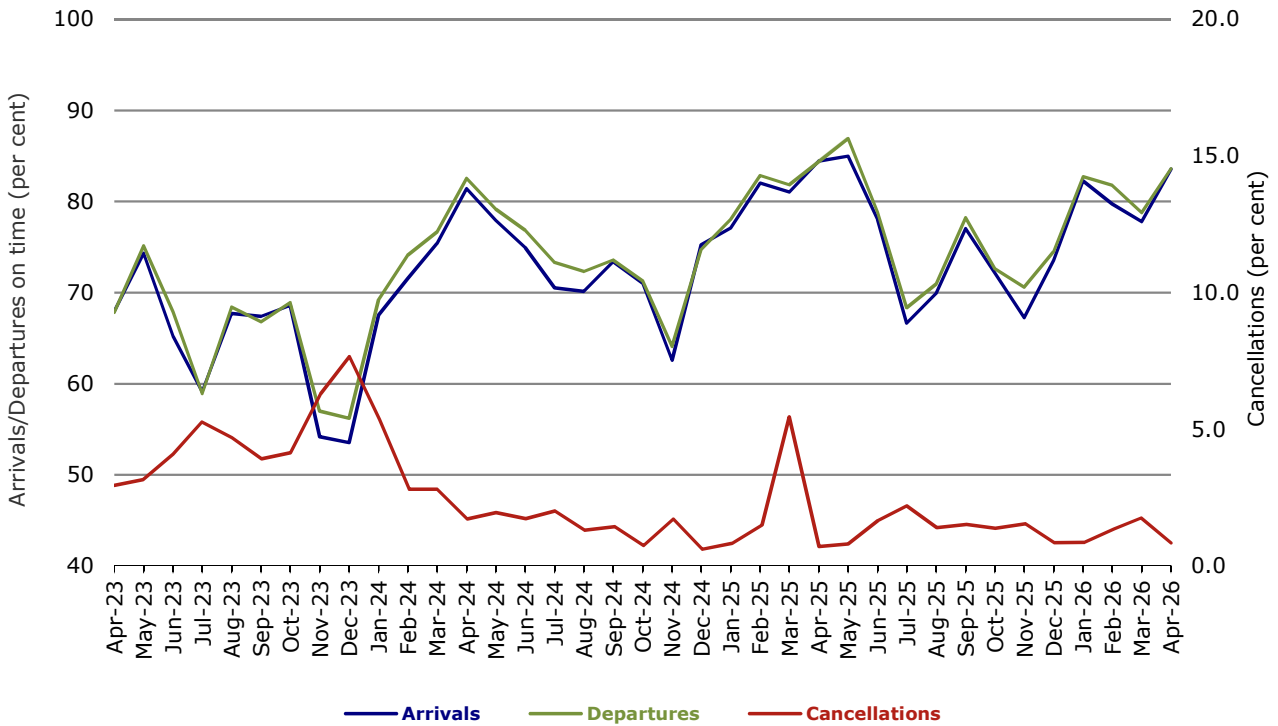


Figure 8 On time performance (by month from Apr 2023)—QantasLink

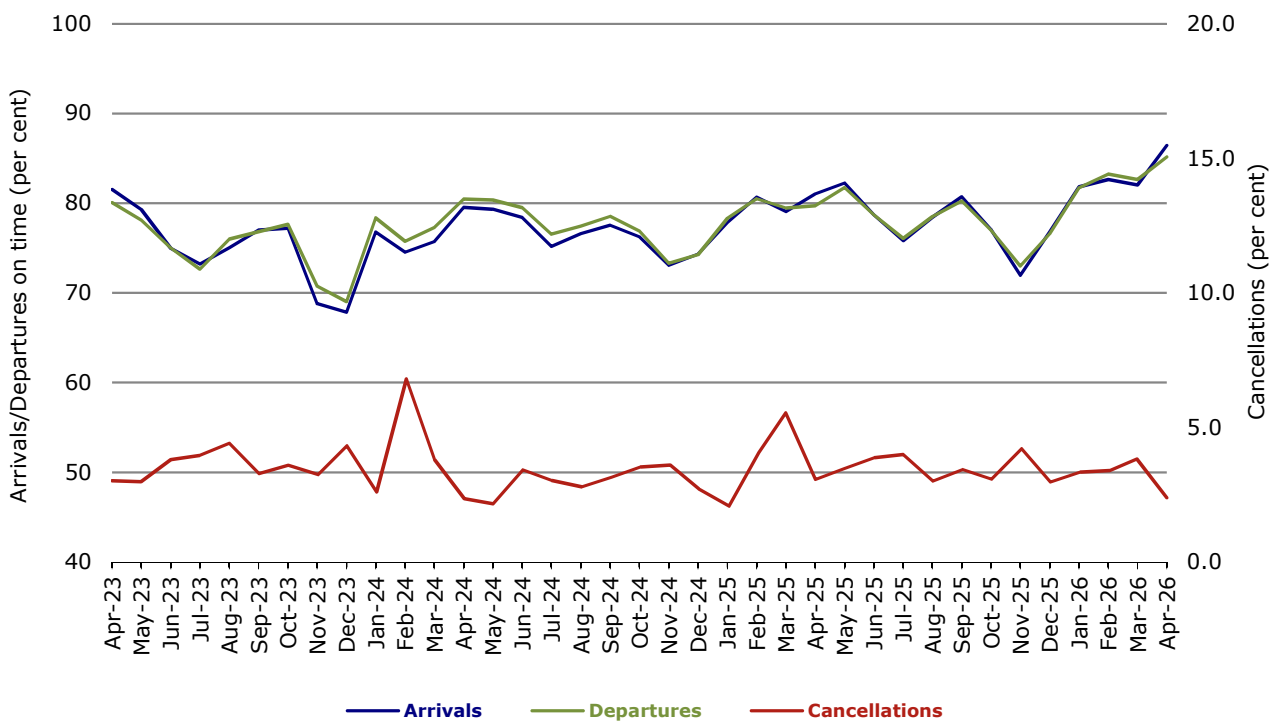


Figure 9 On time performance (by month from Apr 2023)—Rex Airlines

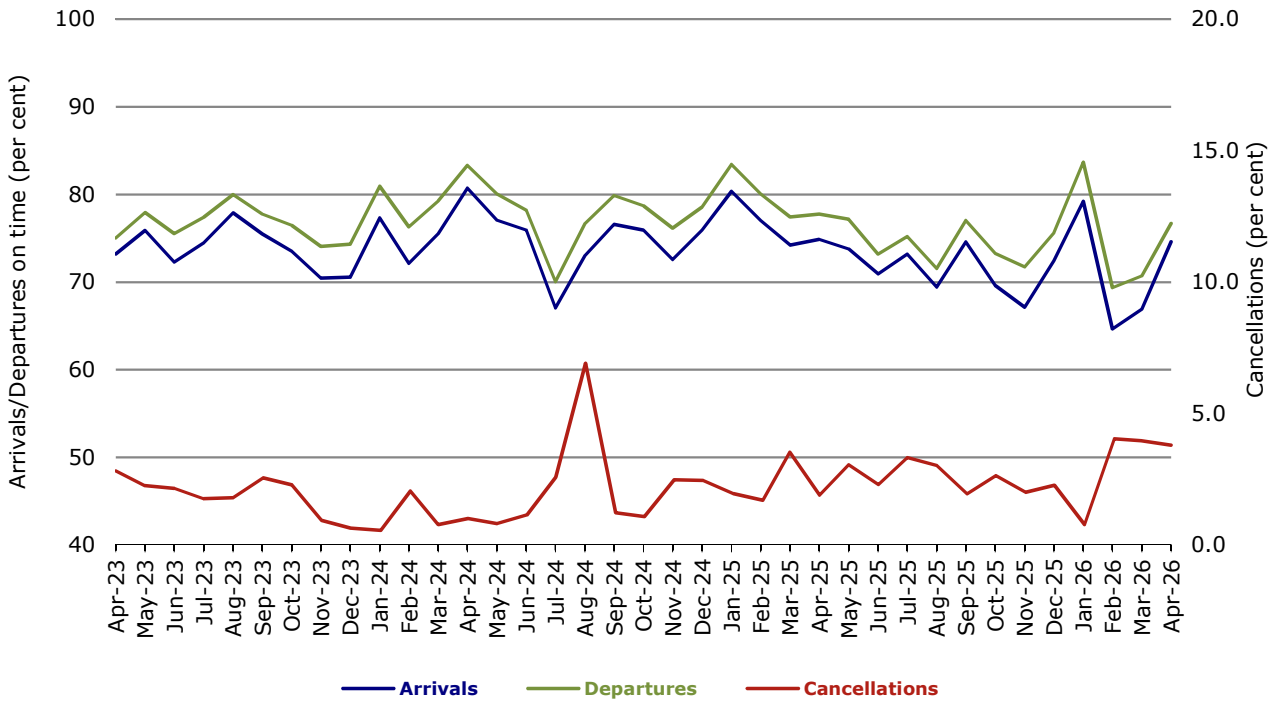


Figure 10 On time performance (by month from Apr 2023)—Virgin Australia Regional Airlines

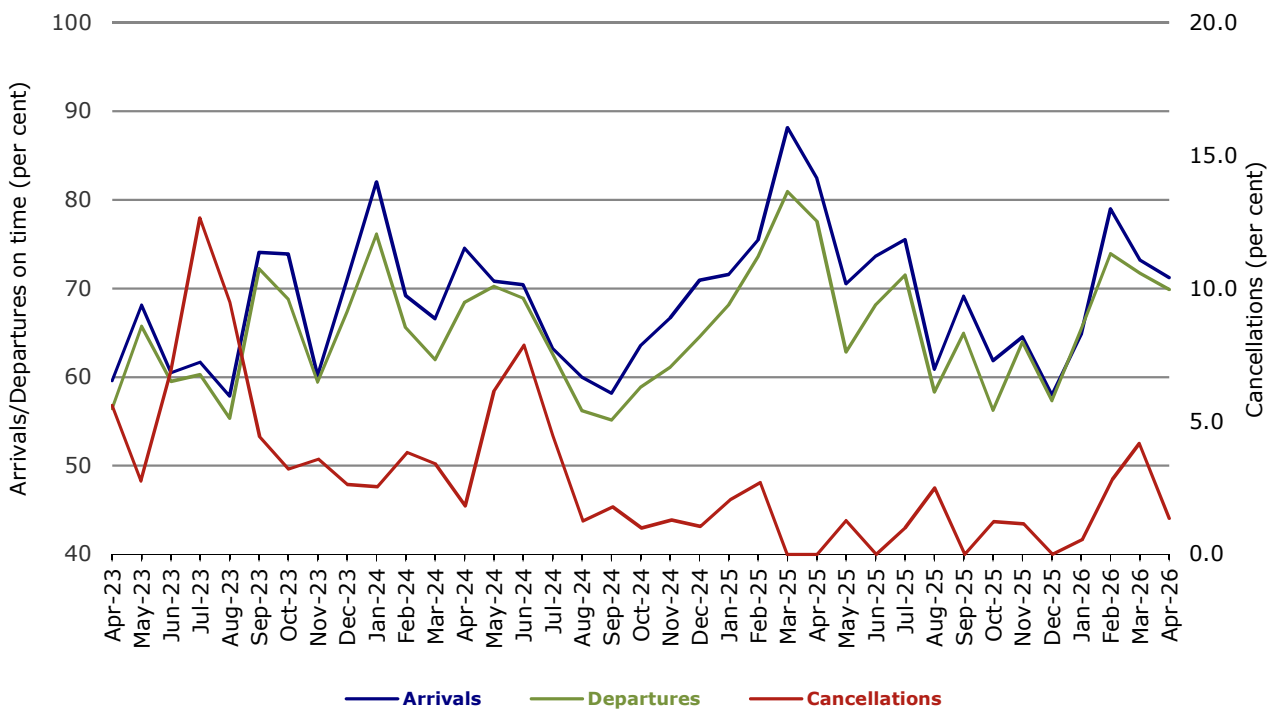
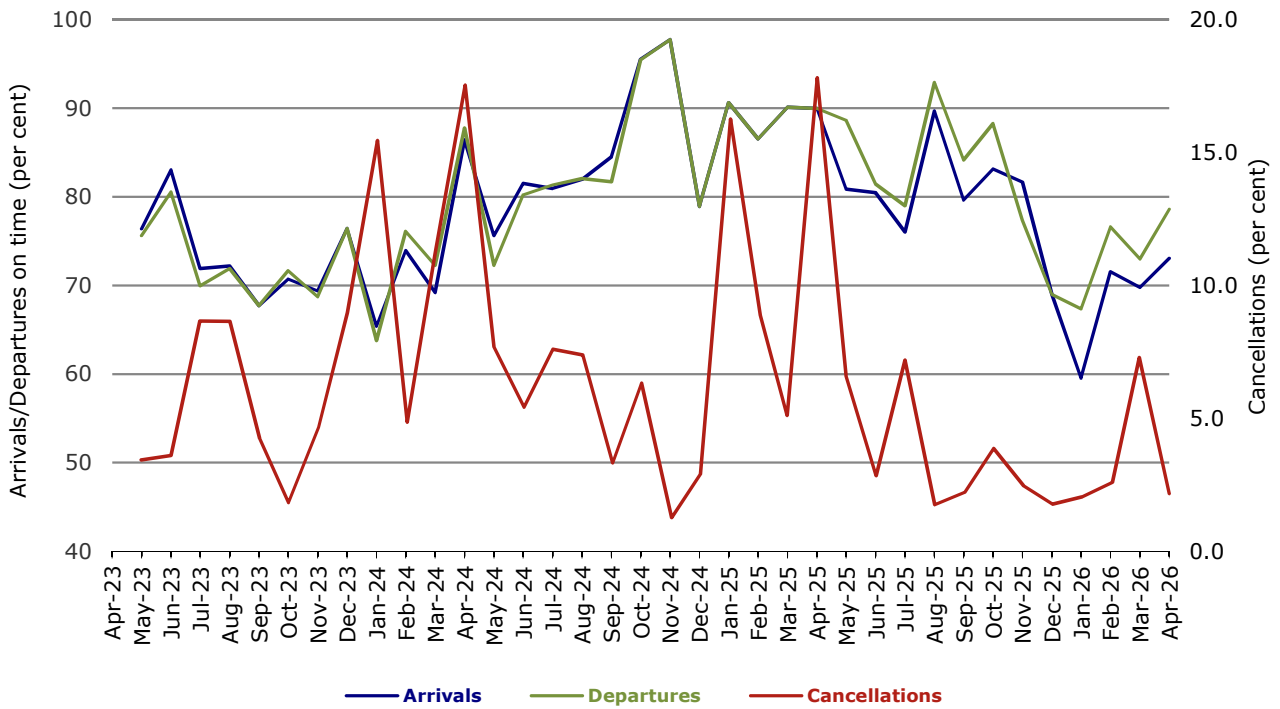
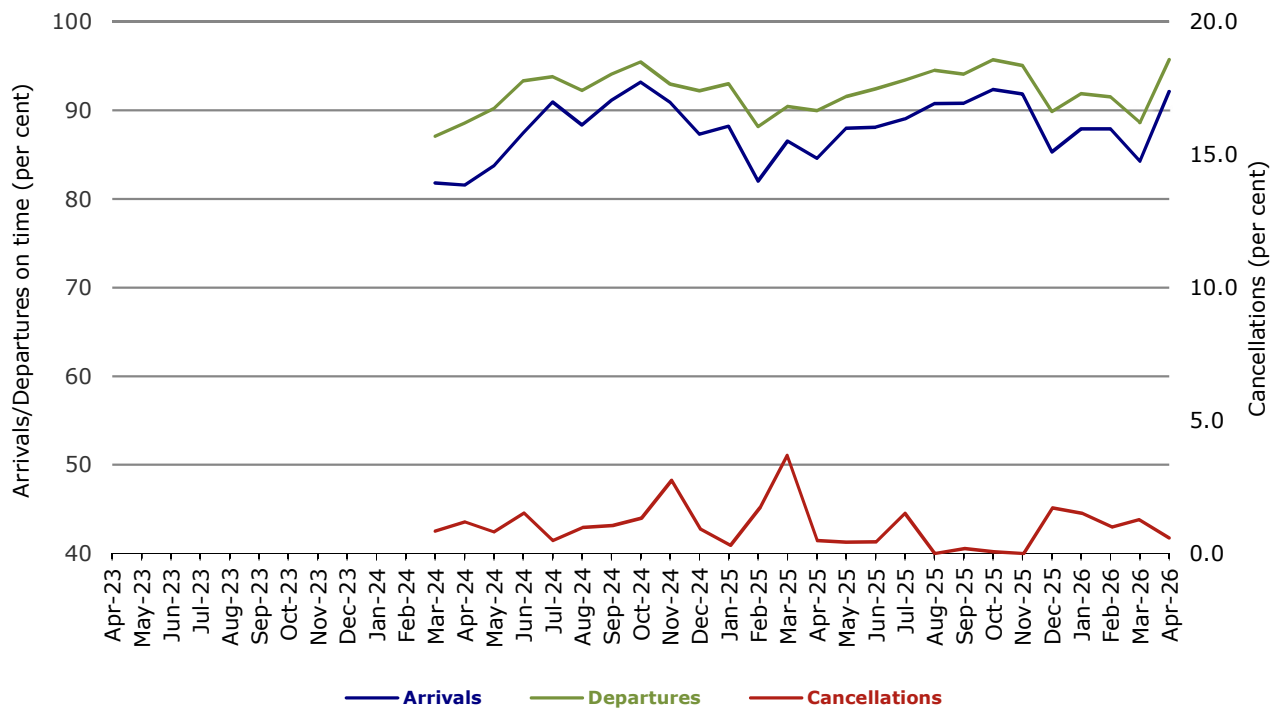


Figure 11 On time performance (by month from Apr 2023)—Skytrans Australia



Note: Skytrans Australia data included from May 2023

Figure 12 On time performance (by month from Apr 2023)—Hinterland



Note: Hinterland data included from March 2024

## Individual routes

On time performance is reported for all routes where the passenger load averages over 8,000 passengers per month over the previous six months, and where two or more airlines operate in competition on those routes. There are now 59 routes for which data are presented.

|                               | Sectors |       | Arrivals<br>On Time |      | Departures<br>On Time |      | Cancellations |     |
|-------------------------------|---------|-------|---------------------|------|-----------------------|------|---------------|-----|
|                               | Sched.  | Flown | No.                 | %    | No.                   | %    | No.           | %   |
| <b>Adelaide-Alice Springs</b> |         |       |                     |      |                       |      |               |     |
| QantasLink                    | 30      | 30    | 27                  | 90.0 | 26                    | 86.7 | 0             | 0.0 |
| Virgin Australia              | 13      | 13    | 7                   | 53.8 | 7                     | 53.8 | 0             | 0.0 |
| All Airlines                  | 43      | 43    | 34                  | 79.1 | 33                    | 76.7 | 0             | 0.0 |
| <b>Adelaide-Brisbane</b>      |         |       |                     |      |                       |      |               |     |
| Jetstar                       | 58      | 57    | 46                  | 80.7 | 48                    | 84.2 | 1             | 1.7 |
| QantasLink                    | 164     | 160   | 139                 | 86.9 | 135                   | 84.4 | 4             | 2.4 |
| Virgin Australia              | 126     | 123   | 114                 | 92.7 | 112                   | 91.1 | 3             | 2.4 |
| All Airlines                  | 348     | 340   | 299                 | 87.9 | 295                   | 86.8 | 8             | 2.3 |
| <b>Adelaide-Canberra</b>      |         |       |                     |      |                       |      |               |     |
| QantasLink                    | 103     | 103   | 95                  | 92.2 | 97                    | 94.2 | 0             | 0.0 |
| Virgin Australia              | 16      | 16    | 12                  | 75.0 | 12                    | 75.0 | 0             | 0.0 |
| All Airlines                  | 119     | 119   | 107                 | 89.9 | 109                   | 91.6 | 0             | 0.0 |
| <b>Adelaide-Gold Coast</b>    |         |       |                     |      |                       |      |               |     |
| Jetstar                       | 43      | 43    | 38                  | 88.4 | 41                    | 95.3 | 0             | 0.0 |
| Virgin Australia              | 31      | 31    | 23                  | 74.2 | 24                    | 77.4 | 0             | 0.0 |
| All Airlines                  | 74      | 74    | 61                  | 82.4 | 65                    | 87.8 | 0             | 0.0 |
| <b>Adelaide-Melbourne</b>     |         |       |                     |      |                       |      |               |     |
| Jetstar                       | 176     | 173   | 136                 | 78.6 | 133                   | 76.9 | 3             | 1.7 |
| Qantas                        | 239     | 237   | 203                 | 85.7 | 201                   | 84.8 | 2             | 0.8 |
| QantasLink                    | 22      | 21    | 19                  | 90.5 | 19                    | 90.5 | 1             | 4.5 |
| Virgin Australia              | 260     | 260   | 198                 | 76.2 | 198                   | 76.2 | 0             | 0.0 |
| All Airlines                  | 697     | 691   | 556                 | 80.5 | 551                   | 79.7 | 6             | 0.9 |
| <b>Adelaide-Perth</b>         |         |       |                     |      |                       |      |               |     |
| Jetstar                       | 34      | 33    | 25                  | 75.8 | 25                    | 75.8 | 1             | 2.9 |
| Qantas                        | 100     | 100   | 92                  | 92.0 | 94                    | 94.0 | 0             | 0.0 |
| Virgin Australia              | 73      | 73    | 63                  | 86.3 | 49                    | 67.1 | 0             | 0.0 |
| All Airlines                  | 207     | 206   | 180                 | 87.4 | 168                   | 81.6 | 1             | 0.5 |
| <b>Adelaide-Port Lincoln</b>  |         |       |                     |      |                       |      |               |     |
| QantasLink                    | 99      | 97    | 92                  | 94.8 | 91                    | 93.8 | 2             | 2.0 |
| Rex Airlines                  | 145     | 132   | 75                  | 56.8 | 79                    | 59.8 | 13            | 9.0 |
| All Airlines                  | 244     | 229   | 167                 | 72.9 | 170                   | 74.2 | 15            | 6.1 |
| <b>Adelaide-Sydney</b>        |         |       |                     |      |                       |      |               |     |
| Jetstar                       | 160     | 155   | 121                 | 78.1 | 117                   | 75.5 | 5             | 3.1 |
| Qantas                        | 236     | 234   | 208                 | 88.9 | 204                   | 87.2 | 2             | 0.8 |
| QantasLink                    | 26      | 25    | 21                  | 84.0 | 21                    | 84.0 | 1             | 3.8 |
| Virgin Australia              | 195     | 191   | 126                 | 66.0 | 130                   | 68.1 | 4             | 2.1 |
| All Airlines                  | 617     | 605   | 476                 | 78.7 | 472                   | 78.0 | 12            | 1.9 |
| <b>Albury-Sydney</b>          |         |       |                     |      |                       |      |               |     |
| QantasLink                    | 99      | 98    | 84                  | 85.7 | 75                    | 76.5 | 1             | 1.0 |
| Rex Airlines                  | 67      | 62    | 58                  | 93.5 | 56                    | 90.3 | 5             | 7.5 |
| All Airlines                  | 166     | 160   | 142                 | 88.8 | 131                   | 81.9 | 6             | 3.6 |

|                                 | Sectors |       | Arrivals<br>On Time |      | Departures<br>On Time |       | Cancellations |     |
|---------------------------------|---------|-------|---------------------|------|-----------------------|-------|---------------|-----|
|                                 | Sched.  | Flown | No.                 | %    | No.                   | %     | No.           | %   |
| <b>Alice Springs-Adelaide</b>   |         |       |                     |      |                       |       |               |     |
| QantasLink                      | 30      | 30    | 27                  | 90.0 | 25                    | 83.3  | 0             | 0.0 |
| Virgin Australia                | 13      | 13    | 6                   | 46.2 | 6                     | 46.2  | 0             | 0.0 |
| All Airlines                    | 43      | 43    | 33                  | 76.7 | 31                    | 72.1  | 0             | 0.0 |
| <b>Ayers Rock-Melbourne</b>     |         |       |                     |      |                       |       |               |     |
| Jetstar                         | 21      | 21    | 16                  | 76.2 | 17                    | 81.0  | 0             | 0.0 |
| Virgin Australia                | 13      | 13    | 11                  | 84.6 | 11                    | 84.6  | 0             | 0.0 |
| All Airlines                    | 34      | 34    | 27                  | 79.4 | 28                    | 82.4  | 0             | 0.0 |
| <b>Ballina-Sydney</b>           |         |       |                     |      |                       |       |               |     |
| Jetstar                         | 82      | 82    | 71                  | 86.6 | 68                    | 82.9  | 0             | 0.0 |
| QantasLink                      | 56      | 54    | 51                  | 94.4 | 48                    | 88.9  | 2             | 3.6 |
| Virgin Australia                | 30      | 30    | 25                  | 83.3 | 23                    | 76.7  | 0             | 0.0 |
| All Airlines                    | 168     | 166   | 147                 | 88.6 | 139                   | 83.7  | 2             | 1.2 |
| <b>Brisbane-Adelaide</b>        |         |       |                     |      |                       |       |               |     |
| Jetstar                         | 58      | 57    | 43                  | 75.4 | 36                    | 63.2  | 1             | 1.7 |
| QantasLink                      | 165     | 162   | 148                 | 91.4 | 148                   | 91.4  | 3             | 1.8 |
| Virgin Australia                | 126     | 123   | 117                 | 95.1 | 109                   | 88.6  | 3             | 2.4 |
| All Airlines                    | 349     | 342   | 308                 | 90.1 | 293                   | 85.7  | 7             | 2.0 |
| <b>Brisbane-Cairns</b>          |         |       |                     |      |                       |       |               |     |
| Jetstar                         | 97      | 97    | 81                  | 83.5 | 80                    | 82.5  | 0             | 0.0 |
| Qantas                          | 11      | 11    | 9                   | 81.8 | 9                     | 81.8  | 0             | 0.0 |
| QantasLink                      | 160     | 160   | 144                 | 90.0 | 134                   | 83.8  | 0             | 0.0 |
| Virgin Australia                | 142     | 142   | 128                 | 90.1 | 125                   | 88.0  | 0             | 0.0 |
| All Airlines                    | 410     | 410   | 362                 | 88.3 | 348                   | 84.9  | 0             | 0.0 |
| <b>Brisbane-Canberra</b>        |         |       |                     |      |                       |       |               |     |
| Jetstar                         | 30      | 30    | 20                  | 66.7 | 17                    | 56.7  | 0             | 0.0 |
| QantasLink                      | 158     | 157   | 145                 | 92.4 | 143                   | 91.1  | 1             | 0.6 |
| Virgin Australia                | 93      | 93    | 83                  | 89.2 | 85                    | 91.4  | 0             | 0.0 |
| All Airlines                    | 281     | 280   | 248                 | 88.6 | 245                   | 87.5  | 1             | 0.4 |
| <b>Brisbane-Darwin</b>          |         |       |                     |      |                       |       |               |     |
| Jetstar                         | 28      | 28    | 25                  | 89.3 | 25                    | 89.3  | 0             | 0.0 |
| Qantas                          | 43      | 43    | 42                  | 97.7 | 39                    | 90.7  | 0             | 0.0 |
| Virgin Australia                | 30      | 30    | 29                  | 96.7 | 28                    | 93.3  | 0             | 0.0 |
| All Airlines                    | 101     | 101   | 96                  | 95.0 | 92                    | 91.1  | 0             | 0.0 |
| <b>Brisbane-Emerald</b>         |         |       |                     |      |                       |       |               |     |
| QantasLink                      | 116     | 113   | 103                 | 91.2 | 98                    | 86.7  | 3             | 2.6 |
| Virgin Australia                | 26      | 26    | 23                  | 88.5 | 23                    | 88.5  | 0             | 0.0 |
| All Airlines                    | 142     | 139   | 126                 | 90.6 | 121                   | 87.1  | 3             | 2.1 |
| <b>Brisbane-Gladstone</b>       |         |       |                     |      |                       |       |               |     |
| QantasLink                      | 129     | 126   | 106                 | 84.1 | 103                   | 81.7  | 3             | 2.3 |
| Virgin Australia                | 33      | 33    | 30                  | 90.9 | 30                    | 90.9  | 0             | 0.0 |
| All Airlines                    | 162     | 159   | 136                 | 85.5 | 133                   | 83.6  | 3             | 1.9 |
| <b>Brisbane-Hamilton Island</b> |         |       |                     |      |                       |       |               |     |
| QantasLink                      | 28      | 28    | 19                  | 67.9 | 21                    | 75.0  | 0             | 0.0 |
| Virgin Australia                | 39      | 39    | 38                  | 97.4 | 39                    | 100.0 | 0             | 0.0 |
| All Airlines                    | 67      | 67    | 57                  | 85.1 | 60                    | 89.6  | 0             | 0.0 |
| <b>Brisbane-Hobart</b>          |         |       |                     |      |                       |       |               |     |
| Jetstar                         | 28      | 28    | 27                  | 96.4 | 27                    | 96.4  | 0             | 0.0 |
| QantasLink                      | 16      | 16    | 14                  | 87.5 | 15                    | 93.8  | 0             | 0.0 |
| Virgin Australia                | 48      | 48    | 42                  | 87.5 | 45                    | 93.8  | 0             | 0.0 |
| All Airlines                    | 92      | 92    | 83                  | 90.2 | 87                    | 94.6  | 0             | 0.0 |

|                             | Sectors |       | Arrivals<br>On Time |       | Departures<br>On Time |       | Cancellations |     |
|-----------------------------|---------|-------|---------------------|-------|-----------------------|-------|---------------|-----|
|                             | Sched.  | Flown | No.                 | %     | No.                   | %     | No.           | %   |
| <b>Brisbane-Launceston</b>  |         |       |                     |       |                       |       |               |     |
| Jetstar                     | 28      | 28    | 24                  | 85.7  | 25                    | 89.3  | 0             | 0.0 |
| Virgin Australia            | 13      | 13    | 12                  | 92.3  | 13                    | 100.0 | 0             | 0.0 |
| All Airlines                | 41      | 41    | 36                  | 87.8  | 38                    | 92.7  | 0             | 0.0 |
| <b>Brisbane-Mackay</b>      |         |       |                     |       |                       |       |               |     |
| Jetstar                     | 30      | 30    | 18                  | 60.0  | 17                    | 56.7  | 0             | 0.0 |
| Qantas                      | 4       | 4     | 4                   | 100.0 | 4                     | 100.0 | 0             | 0.0 |
| QantasLink                  | 166     | 164   | 155                 | 94.5  | 149                   | 90.9  | 2             | 1.2 |
| Virgin Australia            | 131     | 131   | 121                 | 92.4  | 120                   | 91.6  | 0             | 0.0 |
| All Airlines                | 331     | 329   | 298                 | 90.6  | 290                   | 88.1  | 2             | 0.6 |
| <b>Brisbane-Melbourne</b>   |         |       |                     |       |                       |       |               |     |
| Jetstar                     | 204     | 197   | 135                 | 68.5  | 123                   | 62.4  | 7             | 3.4 |
| Qantas                      | 346     | 342   | 318                 | 93.0  | 318                   | 93.0  | 4             | 1.2 |
| QantasLink                  | 41      | 40    | 38                  | 95.0  | 39                    | 97.5  | 1             | 2.4 |
| Virgin Australia            | 392     | 387   | 309                 | 79.8  | 330                   | 85.3  | 5             | 1.3 |
| All Airlines                | 983     | 966   | 800                 | 82.8  | 810                   | 83.9  | 17            | 1.7 |
| <b>Brisbane-Mount Isa</b>   |         |       |                     |       |                       |       |               |     |
| Qantas                      | 43      | 43    | 41                  | 95.3  | 41                    | 95.3  | 0             | 0.0 |
| QantasLink                  | 12      | 12    | 11                  | 91.7  | 11                    | 91.7  | 0             | 0.0 |
| Virgin Australia            | 13      | 13    | 13                  | 100.0 | 13                    | 100.0 | 0             | 0.0 |
| All Airlines                | 68      | 68    | 65                  | 95.6  | 65                    | 95.6  | 0             | 0.0 |
| <b>Brisbane-Newcastle</b>   |         |       |                     |       |                       |       |               |     |
| Jetstar                     | 58      | 58    | 56                  | 96.6  | 54                    | 93.1  | 0             | 0.0 |
| QantasLink                  | 99      | 98    | 91                  | 92.9  | 90                    | 91.8  | 1             | 1.0 |
| Virgin Australia            | 81      | 81    | 67                  | 82.7  | 66                    | 81.5  | 0             | 0.0 |
| All Airlines                | 238     | 237   | 214                 | 90.3  | 210                   | 88.6  | 1             | 0.4 |
| <b>Brisbane-Perth</b>       |         |       |                     |       |                       |       |               |     |
| Jetstar                     | 30      | 30    | 22                  | 73.3  | 17                    | 56.7  | 0             | 0.0 |
| Qantas                      | 173     | 172   | 161                 | 93.6  | 154                   | 89.5  | 1             | 0.6 |
| Virgin Australia            | 128     | 128   | 116                 | 90.6  | 102                   | 79.7  | 0             | 0.0 |
| All Airlines                | 331     | 330   | 299                 | 90.6  | 273                   | 82.7  | 1             | 0.3 |
| <b>Brisbane-Proserpine</b>  |         |       |                     |       |                       |       |               |     |
| Jetstar                     | 42      | 42    | 38                  | 90.5  | 37                    | 88.1  | 0             | 0.0 |
| Virgin Australia            | 34      | 34    | 31                  | 91.2  | 28                    | 82.4  | 0             | 0.0 |
| All Airlines                | 76      | 76    | 69                  | 90.8  | 65                    | 85.5  | 0             | 0.0 |
| <b>Brisbane-Rockhampton</b> |         |       |                     |       |                       |       |               |     |
| QantasLink                  | 187     | 181   | 161                 | 89.0  | 158                   | 87.3  | 6             | 3.2 |
| Virgin Australia            | 148     | 148   | 125                 | 84.5  | 112                   | 75.7  | 0             | 0.0 |
| All Airlines                | 335     | 329   | 286                 | 86.9  | 270                   | 82.1  | 6             | 1.8 |
| <b>Brisbane-Sydney</b>      |         |       |                     |       |                       |       |               |     |
| Jetstar                     | 272     | 256   | 182                 | 71.1  | 167                   | 65.2  | 16            | 5.9 |
| Qantas                      | 512     | 501   | 432                 | 86.2  | 436                   | 87.0  | 11            | 2.1 |
| Virgin Australia            | 454     | 449   | 374                 | 83.3  | 379                   | 84.4  | 5             | 1.1 |
| All Airlines                | 1 238   | 1 206 | 988                 | 81.9  | 982                   | 81.4  | 32            | 2.6 |
| <b>Brisbane-Townsville</b>  |         |       |                     |       |                       |       |               |     |
| Jetstar                     | 75      | 75    | 55                  | 73.3  | 50                    | 66.7  | 0             | 0.0 |
| Qantas                      | 22      | 22    | 20                  | 90.9  | 20                    | 90.9  | 0             | 0.0 |
| QantasLink                  | 132     | 126   | 116                 | 92.1  | 105                   | 83.3  | 6             | 4.5 |
| Virgin Australia            | 137     | 136   | 131                 | 96.3  | 128                   | 94.1  | 1             | 0.7 |
| All Airlines                | 366     | 359   | 322                 | 89.7  | 303                   | 84.4  | 7             | 1.9 |

|                                    | Sectors |       | Arrivals<br>On Time |      | Departures<br>On Time |      | Cancellations |     |
|------------------------------------|---------|-------|---------------------|------|-----------------------|------|---------------|-----|
|                                    | Sched.  | Flown | No.                 | %    | No.                   | %    | No.           | %   |
| <b>Broome-Perth</b>                |         |       |                     |      |                       |      |               |     |
| QantasLink                         | 86      | 86    | 83                  | 96.5 | 80                    | 93.0 | 0             | 0.0 |
| Virgin Australia                   | 53      | 53    | 45                  | 84.9 | 44                    | 83.0 | 0             | 0.0 |
| Virgin Australia Regional Airlines | 25      | 25    | 17                  | 68.0 | 15                    | 60.0 | 0             | 0.0 |
| All Airlines                       | 164     | 164   | 145                 | 88.4 | 139                   | 84.8 | 0             | 0.0 |
| <b>Cairns-Brisbane</b>             |         |       |                     |      |                       |      |               |     |
| Jetstar                            | 97      | 97    | 81                  | 83.5 | 82                    | 84.5 | 0             | 0.0 |
| Qantas                             | 11      | 11    | 9                   | 81.8 | 9                     | 81.8 | 0             | 0.0 |
| QantasLink                         | 160     | 160   | 143                 | 89.4 | 146                   | 91.3 | 0             | 0.0 |
| Virgin Australia                   | 142     | 142   | 126                 | 88.7 | 125                   | 88.0 | 0             | 0.0 |
| All Airlines                       | 410     | 410   | 359                 | 87.6 | 362                   | 88.3 | 0             | 0.0 |
| <b>Cairns-Melbourne</b>            |         |       |                     |      |                       |      |               |     |
| Jetstar                            | 96      | 94    | 81                  | 86.2 | 80                    | 85.1 | 2             | 2.1 |
| Qantas                             | 42      | 41    | 35                  | 85.4 | 39                    | 95.1 | 1             | 2.4 |
| Virgin Australia                   | 74      | 74    | 67                  | 90.5 | 61                    | 82.4 | 0             | 0.0 |
| All Airlines                       | 212     | 209   | 183                 | 87.6 | 180                   | 86.1 | 3             | 1.4 |
| <b>Cairns-Sydney</b>               |         |       |                     |      |                       |      |               |     |
| Jetstar                            | 114     | 111   | 96                  | 86.5 | 96                    | 86.5 | 3             | 2.6 |
| Qantas                             | 45      | 44    | 40                  | 90.9 | 39                    | 88.6 | 1             | 2.2 |
| Virgin Australia                   | 79      | 78    | 69                  | 88.5 | 67                    | 85.9 | 1             | 1.3 |
| All Airlines                       | 238     | 233   | 205                 | 88.0 | 202                   | 86.7 | 5             | 2.1 |
| <b>Canberra-Adelaide</b>           |         |       |                     |      |                       |      |               |     |
| QantasLink                         | 103     | 103   | 95                  | 92.2 | 91                    | 88.3 | 0             | 0.0 |
| Virgin Australia                   | 16      | 16    | 14                  | 87.5 | 14                    | 87.5 | 0             | 0.0 |
| All Airlines                       | 119     | 119   | 109                 | 91.6 | 105                   | 88.2 | 0             | 0.0 |
| <b>Canberra-Brisbane</b>           |         |       |                     |      |                       |      |               |     |
| Jetstar                            | 30      | 30    | 18                  | 60.0 | 19                    | 63.3 | 0             | 0.0 |
| QantasLink                         | 159     | 157   | 145                 | 92.4 | 142                   | 90.4 | 2             | 1.3 |
| Virgin Australia                   | 93      | 93    | 89                  | 95.7 | 87                    | 93.5 | 0             | 0.0 |
| All Airlines                       | 282     | 280   | 252                 | 90.0 | 248                   | 88.6 | 2             | 0.7 |
| <b>Canberra-Gold Coast</b>         |         |       |                     |      |                       |      |               |     |
| Jetstar                            | 17      | 17    | 15                  | 88.2 | 16                    | 94.1 | 0             | 0.0 |
| Virgin Australia                   | 30      | 30    | 25                  | 83.3 | 23                    | 76.7 | 0             | 0.0 |
| All Airlines                       | 47      | 47    | 40                  | 85.1 | 39                    | 83.0 | 0             | 0.0 |
| <b>Canberra-Melbourne</b>          |         |       |                     |      |                       |      |               |     |
| Jetstar                            | 30      | 30    | 19                  | 63.3 | 19                    | 63.3 | 0             | 0.0 |
| Qantas                             | 3       | 3     | 2                   | 66.7 | 2                     | 66.7 | 0             | 0.0 |
| QantasLink                         | 226     | 217   | 182                 | 83.9 | 181                   | 83.4 | 9             | 4.0 |
| Virgin Australia                   | 115     | 115   | 99                  | 86.1 | 95                    | 82.6 | 0             | 0.0 |
| All Airlines                       | 374     | 365   | 302                 | 82.7 | 297                   | 81.4 | 9             | 2.4 |
| <b>Canberra-Sydney</b>             |         |       |                     |      |                       |      |               |     |
| QantasLink                         | 325     | 304   | 273                 | 89.8 | 263                   | 86.5 | 21            | 6.5 |
| Virgin Australia                   | 237     | 233   | 222                 | 95.3 | 224                   | 96.1 | 4             | 1.7 |
| All Airlines                       | 562     | 537   | 495                 | 92.2 | 487                   | 90.7 | 25            | 4.4 |
| <b>Coffs Harbour-Sydney</b>        |         |       |                     |      |                       |      |               |     |
| QantasLink                         | 112     | 111   | 97                  | 87.4 | 87                    | 78.4 | 1             | 0.9 |
| Rex Airlines                       | 80      | 79    | 59                  | 74.7 | 63                    | 79.7 | 1             | 1.3 |
| All Airlines                       | 192     | 190   | 156                 | 82.1 | 150                   | 78.9 | 2             | 1.0 |

|                                    | Sectors |       | Arrivals<br>On Time |       | Departures<br>On Time |      | Cancellations |      |
|------------------------------------|---------|-------|---------------------|-------|-----------------------|------|---------------|------|
|                                    | Sched.  | Flown | No.                 | %     | No.                   | %    | No.           | %    |
| <b>Darwin-Brisbane</b>             |         |       |                     |       |                       |      |               |      |
| Jetstar                            | 28      | 28    | 24                  | 85.7  | 25                    | 89.3 | 0             | 0.0  |
| Qantas                             | 42      | 41    | 38                  | 92.7  | 40                    | 97.6 | 1             | 2.4  |
| Virgin Australia                   | 30      | 30    | 27                  | 90.0  | 29                    | 96.7 | 0             | 0.0  |
| All Airlines                       | 100     | 99    | 89                  | 89.9  | 94                    | 94.9 | 1             | 1.0  |
| <b>Darwin-Melbourne</b>            |         |       |                     |       |                       |      |               |      |
| Jetstar                            | 28      | 28    | 19                  | 67.9  | 18                    | 64.3 | 0             | 0.0  |
| Qantas                             | 36      | 36    | 32                  | 88.9  | 32                    | 88.9 | 0             | 0.0  |
| Virgin Australia                   | 30      | 30    | 25                  | 83.3  | 25                    | 83.3 | 0             | 0.0  |
| All Airlines                       | 94      | 94    | 76                  | 80.9  | 75                    | 79.8 | 0             | 0.0  |
| <b>Darwin-Perth</b>                |         |       |                     |       |                       |      |               |      |
| Qantas                             | 13      | 13    | 11                  | 84.6  | 12                    | 92.3 | 0             | 0.0  |
| QantasLink                         | 27      | 27    | 23                  | 85.2  | 21                    | 77.8 | 0             | 0.0  |
| Virgin Australia                   | 15      | 15    | 15                  | 100.0 | 14                    | 93.3 | 0             | 0.0  |
| Virgin Australia Regional Airlines | 6       | 6     | 5                   | 83.3  | 5                     | 83.3 | 0             | 0.0  |
| All Airlines                       | 61      | 61    | 54                  | 88.5  | 52                    | 85.2 | 0             | 0.0  |
| <b>Devonport-Melbourne</b>         |         |       |                     |       |                       |      |               |      |
| QantasLink                         | 95      | 93    | 69                  | 74.2  | 68                    | 73.1 | 2             | 2.1  |
| Rex Airlines                       | 41      | 40    | 30                  | 75.0  | 33                    | 82.5 | 1             | 2.4  |
| All Airlines                       | 136     | 133   | 99                  | 74.4  | 101                   | 75.9 | 3             | 2.2  |
| <b>Dubbo-Sydney</b>                |         |       |                     |       |                       |      |               |      |
| QantasLink                         | 112     | 110   | 98                  | 89.1  | 93                    | 84.5 | 2             | 1.8  |
| Rex Airlines                       | 91      | 74    | 51                  | 68.9  | 53                    | 71.6 | 17            | 18.7 |
| All Airlines                       | 203     | 184   | 149                 | 81.0  | 146                   | 79.3 | 19            | 9.4  |
| <b>Emerald-Brisbane</b>            |         |       |                     |       |                       |      |               |      |
| QantasLink                         | 117     | 113   | 106                 | 93.8  | 104                   | 92.0 | 4             | 3.4  |
| Virgin Australia                   | 26      | 26    | 23                  | 88.5  | 23                    | 88.5 | 0             | 0.0  |
| All Airlines                       | 143     | 139   | 129                 | 92.8  | 127                   | 91.4 | 4             | 2.8  |
| <b>Gladstone-Brisbane</b>          |         |       |                     |       |                       |      |               |      |
| QantasLink                         | 130     | 126   | 112                 | 88.9  | 112                   | 88.9 | 4             | 3.1  |
| Virgin Australia                   | 33      | 33    | 31                  | 93.9  | 30                    | 90.9 | 0             | 0.0  |
| All Airlines                       | 163     | 159   | 143                 | 89.9  | 142                   | 89.3 | 4             | 2.5  |
| <b>Gold Coast-Adelaide</b>         |         |       |                     |       |                       |      |               |      |
| Jetstar                            | 43      | 43    | 40                  | 93.0  | 34                    | 79.1 | 0             | 0.0  |
| Virgin Australia                   | 32      | 32    | 20                  | 62.5  | 18                    | 56.3 | 0             | 0.0  |
| All Airlines                       | 75      | 75    | 60                  | 80.0  | 52                    | 69.3 | 0             | 0.0  |
| <b>Gold Coast-Canberra</b>         |         |       |                     |       |                       |      |               |      |
| Jetstar                            | 17      | 17    | 17                  | 100.0 | 16                    | 94.1 | 0             | 0.0  |
| Virgin Australia                   | 30      | 30    | 25                  | 83.3  | 25                    | 83.3 | 0             | 0.0  |
| All Airlines                       | 47      | 47    | 42                  | 89.4  | 41                    | 87.2 | 0             | 0.0  |
| <b>Gold Coast-Melbourne</b>        |         |       |                     |       |                       |      |               |      |
| Jetstar                            | 231     | 226   | 180                 | 79.6  | 174                   | 77.0 | 5             | 2.2  |
| Qantas                             | 58      | 58    | 50                  | 86.2  | 52                    | 89.7 | 0             | 0.0  |
| QantasLink                         | 23      | 22    | 15                  | 68.2  | 12                    | 54.5 | 1             | 4.3  |
| Virgin Australia                   | 250     | 250   | 186                 | 74.4  | 168                   | 67.2 | 0             | 0.0  |
| All Airlines                       | 562     | 556   | 431                 | 77.5  | 406                   | 73.0 | 6             | 1.1  |

|                                    | Sectors |       | Arrivals<br>On Time |      | Departures<br>On Time |      | Cancellations |     |
|------------------------------------|---------|-------|---------------------|------|-----------------------|------|---------------|-----|
|                                    | Sched.  | Flown | No.                 | %    | No.                   | %    | No.           | %   |
| <b>Gold Coast-Sydney</b>           |         |       |                     |      |                       |      |               |     |
| Jetstar                            | 305     | 296   | 242                 | 81.8 | 240                   | 81.1 | 9             | 3.0 |
| Qantas                             | 131     | 131   | 101                 | 77.1 | 108                   | 82.4 | 0             | 0.0 |
| Virgin Australia                   | 301     | 299   | 243                 | 81.3 | 241                   | 80.6 | 2             | 0.7 |
| All Airlines                       | 737     | 726   | 586                 | 80.7 | 589                   | 81.1 | 11            | 1.5 |
| <b>Hamilton Island-Brisbane</b>    |         |       |                     |      |                       |      |               |     |
| QantasLink                         | 28      | 28    | 17                  | 60.7 | 16                    | 57.1 | 0             | 0.0 |
| Virgin Australia                   | 39      | 39    | 38                  | 97.4 | 38                    | 97.4 | 0             | 0.0 |
| All Airlines                       | 67      | 67    | 55                  | 82.1 | 54                    | 80.6 | 0             | 0.0 |
| <b>Hamilton Island-Sydney</b>      |         |       |                     |      |                       |      |               |     |
| Qantas                             | 32      | 32    | 22                  | 68.8 | 20                    | 62.5 | 0             | 0.0 |
| Virgin Australia                   | 31      | 31    | 21                  | 67.7 | 21                    | 67.7 | 0             | 0.0 |
| All Airlines                       | 63      | 63    | 43                  | 68.3 | 41                    | 65.1 | 0             | 0.0 |
| <b>Hobart-Brisbane</b>             |         |       |                     |      |                       |      |               |     |
| Jetstar                            | 28      | 28    | 25                  | 89.3 | 23                    | 82.1 | 0             | 0.0 |
| QantasLink                         | 16      | 16    | 12                  | 75.0 | 10                    | 62.5 | 0             | 0.0 |
| Virgin Australia                   | 48      | 48    | 44                  | 91.7 | 41                    | 85.4 | 0             | 0.0 |
| All Airlines                       | 92      | 92    | 81                  | 88.0 | 74                    | 80.4 | 0             | 0.0 |
| <b>Hobart-Melbourne</b>            |         |       |                     |      |                       |      |               |     |
| Jetstar                            | 171     | 170   | 117                 | 68.8 | 115                   | 67.6 | 1             | 0.6 |
| Qantas                             | 26      | 26    | 24                  | 92.3 | 24                    | 92.3 | 0             | 0.0 |
| QantasLink                         | 82      | 81    | 60                  | 74.1 | 62                    | 76.5 | 1             | 1.2 |
| Virgin Australia                   | 130     | 130   | 113                 | 86.9 | 103                   | 79.2 | 0             | 0.0 |
| All Airlines                       | 409     | 407   | 314                 | 77.1 | 304                   | 74.7 | 2             | 0.5 |
| <b>Hobart-Sydney</b>               |         |       |                     |      |                       |      |               |     |
| Jetstar                            | 84      | 84    | 65                  | 77.4 | 63                    | 75.0 | 0             | 0.0 |
| QantasLink                         | 85      | 83    | 67                  | 80.7 | 67                    | 80.7 | 2             | 2.4 |
| Virgin Australia                   | 66      | 66    | 57                  | 86.4 | 57                    | 86.4 | 0             | 0.0 |
| All Airlines                       | 235     | 233   | 189                 | 81.1 | 187                   | 80.3 | 2             | 0.9 |
| <b>Kalgoorlie-Perth</b>            |         |       |                     |      |                       |      |               |     |
| Qantas                             | 9       | 9     | 7                   | 77.8 | 7                     | 77.8 | 0             | 0.0 |
| QantasLink                         | 73      | 73    | 65                  | 89.0 | 64                    | 87.7 | 0             | 0.0 |
| Virgin Australia                   | 97      | 95    | 72                  | 75.8 | 71                    | 74.7 | 2             | 2.1 |
| Virgin Australia Regional Airlines | 12      | 11    | 8                   | 72.7 | 7                     | 63.6 | 1             | 8.3 |
| All Airlines                       | 191     | 188   | 152                 | 80.9 | 149                   | 79.3 | 3             | 1.6 |
| <b>Karratha-Perth</b>              |         |       |                     |      |                       |      |               |     |
| Qantas                             | 9       | 9     | 8                   | 88.9 | 7                     | 77.8 | 0             | 0.0 |
| QantasLink                         | 177     | 174   | 143                 | 82.2 | 136                   | 78.2 | 3             | 1.7 |
| Virgin Australia                   | 82      | 81    | 73                  | 90.1 | 73                    | 90.1 | 1             | 1.2 |
| Virgin Australia Regional Airlines | 4       | 4     | 3                   | 75.0 | 3                     | 75.0 | 0             | 0.0 |
| All Airlines                       | 272     | 268   | 227                 | 84.7 | 219                   | 81.7 | 4             | 1.5 |
| <b>Launceston-Brisbane</b>         |         |       |                     |      |                       |      |               |     |
| Jetstar                            | 28      | 28    | 23                  | 82.1 | 23                    | 82.1 | 0             | 0.0 |
| Virgin Australia                   | 12      | 12    | 10                  | 83.3 | 6                     | 50.0 | 0             | 0.0 |
| All Airlines                       | 40      | 40    | 33                  | 82.5 | 29                    | 72.5 | 0             | 0.0 |
| <b>Launceston-Melbourne</b>        |         |       |                     |      |                       |      |               |     |
| Jetstar                            | 91      | 89    | 63                  | 70.8 | 61                    | 68.5 | 2             | 2.2 |
| QantasLink                         | 112     | 110   | 84                  | 76.4 | 84                    | 76.4 | 2             | 1.8 |
| Virgin Australia                   | 100     | 100   | 68                  | 68.0 | 71                    | 71.0 | 0             | 0.0 |
| All Airlines                       | 303     | 299   | 215                 | 71.9 | 216                   | 72.2 | 4             | 1.3 |

|                             | Sectors |       | Arrivals<br>On Time |       | Departures<br>On Time |       | Cancellations |     |
|-----------------------------|---------|-------|---------------------|-------|-----------------------|-------|---------------|-----|
|                             | Sched.  | Flown | No.                 | %     | No.                   | %     | No.           | %   |
| <b>Launceston-Sydney</b>    |         |       |                     |       |                       |       |               |     |
| Jetstar                     | 54      | 54    | 43                  | 79.6  | 35                    | 64.8  | 0             | 0.0 |
| QantasLink                  | 30      | 29    | 26                  | 89.7  | 24                    | 82.8  | 1             | 3.3 |
| Virgin Australia            | 31      | 31    | 22                  | 71.0  | 20                    | 64.5  | 0             | 0.0 |
| All Airlines                | 115     | 114   | 91                  | 79.8  | 79                    | 69.3  | 1             | 0.9 |
| <b>Mackay-Brisbane</b>      |         |       |                     |       |                       |       |               |     |
| Jetstar                     | 29      | 29    | 18                  | 62.1  | 21                    | 72.4  | 0             | 0.0 |
| Qantas                      | 4       | 4     | 4                   | 100.0 | 4                     | 100.0 | 0             | 0.0 |
| QantasLink                  | 170     | 166   | 157                 | 94.6  | 158                   | 95.2  | 4             | 2.4 |
| Virgin Australia            | 131     | 131   | 127                 | 96.9  | 124                   | 94.7  | 0             | 0.0 |
| All Airlines                | 334     | 330   | 306                 | 92.7  | 307                   | 93.0  | 4             | 1.2 |
| <b>Melbourne-Adelaide</b>   |         |       |                     |       |                       |       |               |     |
| Jetstar                     | 176     | 175   | 133                 | 76.0  | 132                   | 75.4  | 1             | 0.6 |
| Qantas                      | 239     | 238   | 194                 | 81.5  | 207                   | 87.0  | 1             | 0.4 |
| QantasLink                  | 22      | 21    | 12                  | 57.1  | 17                    | 81.0  | 1             | 4.5 |
| Virgin Australia            | 257     | 257   | 201                 | 78.2  | 212                   | 82.5  | 0             | 0.0 |
| All Airlines                | 694     | 691   | 540                 | 78.1  | 568                   | 82.2  | 3             | 0.4 |
| <b>Melbourne-Ayers Rock</b> |         |       |                     |       |                       |       |               |     |
| Jetstar                     | 21      | 21    | 18                  | 85.7  | 20                    | 95.2  | 0             | 0.0 |
| Virgin Australia            | 13      | 13    | 13                  | 100.0 | 12                    | 92.3  | 0             | 0.0 |
| All Airlines                | 34      | 34    | 31                  | 91.2  | 32                    | 94.1  | 0             | 0.0 |
| <b>Melbourne-Brisbane</b>   |         |       |                     |       |                       |       |               |     |
| Jetstar                     | 205     | 197   | 136                 | 69.0  | 116                   | 58.9  | 8             | 3.9 |
| Qantas                      | 346     | 342   | 320                 | 93.6  | 310                   | 90.6  | 4             | 1.2 |
| QantasLink                  | 41      | 39    | 31                  | 79.5  | 29                    | 74.4  | 2             | 4.9 |
| Virgin Australia            | 395     | 392   | 302                 | 77.0  | 321                   | 81.9  | 3             | 0.8 |
| All Airlines                | 987     | 970   | 789                 | 81.3  | 776                   | 80.0  | 17            | 1.7 |
| <b>Melbourne-Cairns</b>     |         |       |                     |       |                       |       |               |     |
| Jetstar                     | 96      | 94    | 79                  | 84.0  | 75                    | 79.8  | 2             | 2.1 |
| Qantas                      | 42      | 42    | 39                  | 92.9  | 34                    | 81.0  | 0             | 0.0 |
| Virgin Australia            | 74      | 74    | 66                  | 89.2  | 68                    | 91.9  | 0             | 0.0 |
| All Airlines                | 212     | 210   | 184                 | 87.6  | 177                   | 84.3  | 2             | 0.9 |
| <b>Melbourne-Canberra</b>   |         |       |                     |       |                       |       |               |     |
| Jetstar                     | 30      | 30    | 22                  | 73.3  | 23                    | 76.7  | 0             | 0.0 |
| Qantas                      | 3       | 3     | 2                   | 66.7  | 2                     | 66.7  | 0             | 0.0 |
| QantasLink                  | 226     | 218   | 188                 | 86.2  | 177                   | 81.2  | 8             | 3.5 |
| Virgin Australia            | 115     | 115   | 93                  | 80.9  | 89                    | 77.4  | 0             | 0.0 |
| All Airlines                | 374     | 366   | 305                 | 83.3  | 291                   | 79.5  | 8             | 2.1 |
| <b>Melbourne-Darwin</b>     |         |       |                     |       |                       |       |               |     |
| Jetstar                     | 28      | 28    | 22                  | 78.6  | 16                    | 57.1  | 0             | 0.0 |
| Qantas                      | 36      | 36    | 29                  | 80.6  | 31                    | 86.1  | 0             | 0.0 |
| Virgin Australia            | 30      | 30    | 29                  | 96.7  | 26                    | 86.7  | 0             | 0.0 |
| All Airlines                | 94      | 94    | 80                  | 85.1  | 73                    | 77.7  | 0             | 0.0 |
| <b>Melbourne-Devonport</b>  |         |       |                     |       |                       |       |               |     |
| QantasLink                  | 95      | 93    | 66                  | 71.0  | 62                    | 66.7  | 2             | 2.1 |
| Rex Airlines                | 41      | 40    | 33                  | 82.5  | 33                    | 82.5  | 1             | 2.4 |
| All Airlines                | 136     | 133   | 99                  | 74.4  | 95                    | 71.4  | 3             | 2.2 |
| <b>Melbourne-Gold Coast</b> |         |       |                     |       |                       |       |               |     |
| Jetstar                     | 231     | 228   | 186                 | 81.6  | 167                   | 73.2  | 3             | 1.3 |
| Qantas                      | 57      | 57    | 53                  | 93.0  | 54                    | 94.7  | 0             | 0.0 |
| QantasLink                  | 24      | 24    | 17                  | 70.8  | 21                    | 87.5  | 0             | 0.0 |
| Virgin Australia            | 251     | 251   | 213                 | 84.9  | 212                   | 84.5  | 0             | 0.0 |
| All Airlines                | 563     | 560   | 469                 | 83.8  | 454                   | 81.1  | 3             | 0.5 |

|                                 | Sectors |       | Arrivals<br>On Time |       | Departures<br>On Time |       | Cancellations |      |
|---------------------------------|---------|-------|---------------------|-------|-----------------------|-------|---------------|------|
|                                 | Sched.  | Flown | No.                 | %     | No.                   | %     | No.           | %    |
| <b>Melbourne-Hobart</b>         |         |       |                     |       |                       |       |               |      |
| Jetstar                         | 171     | 170   | 123                 | 72.4  | 116                   | 68.2  | 1             | 0.6  |
| Qantas                          | 26      | 26    | 26                  | 100.0 | 25                    | 96.2  | 0             | 0.0  |
| QantasLink                      | 82      | 82    | 64                  | 78.0  | 69                    | 84.1  | 0             | 0.0  |
| Virgin Australia                | 130     | 130   | 107                 | 82.3  | 103                   | 79.2  | 0             | 0.0  |
| All Airlines                    | 409     | 408   | 320                 | 78.4  | 313                   | 76.7  | 1             | 0.2  |
| <b>Melbourne-Launceston</b>     |         |       |                     |       |                       |       |               |      |
| Jetstar                         | 91      | 90    | 63                  | 70.0  | 64                    | 71.1  | 1             | 1.1  |
| QantasLink                      | 112     | 110   | 78                  | 70.9  | 70                    | 63.6  | 2             | 1.8  |
| Virgin Australia                | 100     | 100   | 74                  | 74.0  | 75                    | 75.0  | 0             | 0.0  |
| All Airlines                    | 303     | 300   | 215                 | 71.7  | 209                   | 69.7  | 3             | 1.0  |
| <b>Melbourne-Mildura</b>        |         |       |                     |       |                       |       |               |      |
| QantasLink                      | 90      | 88    | 70                  | 79.5  | 59                    | 67.0  | 2             | 2.2  |
| Rex Airlines                    | 93      | 92    | 64                  | 69.6  | 68                    | 73.9  | 1             | 1.1  |
| All Airlines                    | 183     | 180   | 134                 | 74.4  | 127                   | 70.6  | 3             | 1.6  |
| <b>Melbourne-Newcastle</b>      |         |       |                     |       |                       |       |               |      |
| Jetstar                         | 59      | 59    | 50                  | 84.7  | 44                    | 74.6  | 0             | 0.0  |
| QantasLink                      | 55      | 54    | 50                  | 92.6  | 47                    | 87.0  | 1             | 1.8  |
| Virgin Australia                | 38      | 38    | 36                  | 94.7  | 30                    | 78.9  | 0             | 0.0  |
| All Airlines                    | 152     | 151   | 136                 | 90.1  | 121                   | 80.1  | 1             | 0.7  |
| <b>Melbourne-Perth</b>          |         |       |                     |       |                       |       |               |      |
| Jetstar                         | 88      | 83    | 58                  | 69.9  | 54                    | 65.1  | 5             | 5.7  |
| Qantas                          | 216     | 214   | 158                 | 73.8  | 181                   | 84.6  | 2             | 0.9  |
| Virgin Australia                | 230     | 230   | 188                 | 81.7  | 166                   | 72.2  | 0             | 0.0  |
| All Airlines                    | 534     | 527   | 404                 | 76.7  | 401                   | 76.1  | 7             | 1.3  |
| <b>Melbourne-Sunshine Coast</b> |         |       |                     |       |                       |       |               |      |
| Jetstar                         | 106     | 106   | 74                  | 69.8  | 68                    | 64.2  | 0             | 0.0  |
| Qantas                          | 36      | 36    | 32                  | 88.9  | 28                    | 77.8  | 0             | 0.0  |
| Virgin Australia                | 70      | 70    | 60                  | 85.7  | 61                    | 87.1  | 0             | 0.0  |
| All Airlines                    | 212     | 212   | 166                 | 78.3  | 157                   | 74.1  | 0             | 0.0  |
| <b>Melbourne-Sydney</b>         |         |       |                     |       |                       |       |               |      |
| Jetstar                         | 518     | 495   | 378                 | 76.4  | 364                   | 73.5  | 23            | 4.4  |
| Qantas                          | 788     | 751   | 637                 | 84.8  | 662                   | 88.1  | 37            | 4.7  |
| QantasLink                      | 85      | 73    | 57                  | 78.1  | 62                    | 84.9  | 12            | 14.1 |
| Virgin Australia                | 740     | 720   | 591                 | 82.1  | 620                   | 86.1  | 20            | 2.7  |
| All Airlines                    | 2 131   | 2 039 | 1 663               | 81.6  | 1 708                 | 83.8  | 92            | 4.3  |
| <b>Mildura-Melbourne</b>        |         |       |                     |       |                       |       |               |      |
| QantasLink                      | 90      | 87    | 66                  | 75.9  | 69                    | 79.3  | 3             | 3.3  |
| Rex Airlines                    | 93      | 92    | 58                  | 63.0  | 66                    | 71.7  | 1             | 1.1  |
| All Airlines                    | 183     | 179   | 124                 | 69.3  | 135                   | 75.4  | 4             | 2.2  |
| <b>Mount Isa-Brisbane</b>       |         |       |                     |       |                       |       |               |      |
| Qantas                          | 43      | 43    | 34                  | 79.1  | 40                    | 93.0  | 0             | 0.0  |
| QantasLink                      | 12      | 12    | 10                  | 83.3  | 11                    | 91.7  | 0             | 0.0  |
| Virgin Australia                | 14      | 13    | 13                  | 100.0 | 13                    | 100.0 | 1             | 7.1  |
| All Airlines                    | 69      | 68    | 57                  | 83.8  | 64                    | 94.1  | 1             | 1.4  |

|                                    | Sectors |       | Arrivals<br>On Time |       | Departures<br>On Time |       | Cancellations |     |
|------------------------------------|---------|-------|---------------------|-------|-----------------------|-------|---------------|-----|
|                                    | Sched.  | Flown | No.                 | %     | No.                   | %     | No.           | %   |
| <b>Newcastle-Brisbane</b>          |         |       |                     |       |                       |       |               |     |
| Jetstar                            | 58      | 58    | 56                  | 96.6  | 51                    | 87.9  | 0             | 0.0 |
| QantasLink                         | 99      | 98    | 90                  | 91.8  | 90                    | 91.8  | 1             | 1.0 |
| Virgin Australia                   | 81      | 81    | 71                  | 87.7  | 72                    | 88.9  | 0             | 0.0 |
| All Airlines                       | 238     | 237   | 217                 | 91.6  | 213                   | 89.9  | 1             | 0.4 |
| <b>Newcastle-Melbourne</b>         |         |       |                     |       |                       |       |               |     |
| Jetstar                            | 58      | 58    | 49                  | 84.5  | 48                    | 82.8  | 0             | 0.0 |
| QantasLink                         | 56      | 54    | 52                  | 96.3  | 52                    | 96.3  | 2             | 3.6 |
| Virgin Australia                   | 38      | 38    | 31                  | 81.6  | 32                    | 84.2  | 0             | 0.0 |
| All Airlines                       | 152     | 150   | 132                 | 88.0  | 132                   | 88.0  | 2             | 1.3 |
| <b>Newman-Perth</b>                |         |       |                     |       |                       |       |               |     |
| Qantas                             | 4       | 4     | 4                   | 100.0 | 4                     | 100.0 | 0             | 0.0 |
| QantasLink                         | 131     | 131   | 114                 | 87.0  | 114                   | 87.0  | 0             | 0.0 |
| Virgin Australia                   | 55      | 54    | 38                  | 70.4  | 36                    | 66.7  | 1             | 1.8 |
| Virgin Australia Regional Airlines | 1       | 1     | 1                   | 100.0 | 1                     | 100.0 | 0             | 0.0 |
| All Airlines                       | 191     | 190   | 157                 | 82.6  | 155                   | 81.6  | 1             | 0.5 |
| <b>Perth-Adelaide</b>              |         |       |                     |       |                       |       |               |     |
| Jetstar                            | 34      | 33    | 26                  | 78.8  | 26                    | 78.8  | 1             | 2.9 |
| Qantas                             | 100     | 100   | 90                  | 90.0  | 94                    | 94.0  | 0             | 0.0 |
| Virgin Australia                   | 75      | 75    | 67                  | 89.3  | 72                    | 96.0  | 0             | 0.0 |
| All Airlines                       | 209     | 208   | 183                 | 88.0  | 192                   | 92.3  | 1             | 0.5 |
| <b>Perth-Brisbane</b>              |         |       |                     |       |                       |       |               |     |
| Jetstar                            | 30      | 30    | 15                  | 50.0  | 13                    | 43.3  | 0             | 0.0 |
| Qantas                             | 173     | 173   | 128                 | 74.0  | 155                   | 89.6  | 0             | 0.0 |
| Virgin Australia                   | 128     | 128   | 100                 | 78.1  | 114                   | 89.1  | 0             | 0.0 |
| All Airlines                       | 331     | 331   | 243                 | 73.4  | 282                   | 85.2  | 0             | 0.0 |
| <b>Perth-Broome</b>                |         |       |                     |       |                       |       |               |     |
| QantasLink                         | 86      | 86    | 77                  | 89.5  | 80                    | 93.0  | 0             | 0.0 |
| Virgin Australia                   | 53      | 53    | 48                  | 90.6  | 49                    | 92.5  | 0             | 0.0 |
| Virgin Australia Regional Airlines | 25      | 25    | 17                  | 68.0  | 18                    | 72.0  | 0             | 0.0 |
| All Airlines                       | 164     | 164   | 142                 | 86.6  | 147                   | 89.6  | 0             | 0.0 |
| <b>Perth-Darwin</b>                |         |       |                     |       |                       |       |               |     |
| Qantas                             | 13      | 13    | 11                  | 84.6  | 11                    | 84.6  | 0             | 0.0 |
| QantasLink                         | 27      | 27    | 19                  | 70.4  | 24                    | 88.9  | 0             | 0.0 |
| Virgin Australia                   | 15      | 15    | 15                  | 100.0 | 15                    | 100.0 | 0             | 0.0 |
| Virgin Australia Regional Airlines | 6       | 6     | 4                   | 66.7  | 5                     | 83.3  | 0             | 0.0 |
| All Airlines                       | 61      | 61    | 49                  | 80.3  | 55                    | 90.2  | 0             | 0.0 |
| <b>Perth-Kalgoorlie</b>            |         |       |                     |       |                       |       |               |     |
| Qantas                             | 9       | 9     | 6                   | 66.7  | 8                     | 88.9  | 0             | 0.0 |
| QantasLink                         | 73      | 73    | 62                  | 84.9  | 69                    | 94.5  | 0             | 0.0 |
| Virgin Australia                   | 97      | 95    | 78                  | 82.1  | 87                    | 91.6  | 2             | 2.1 |
| Virgin Australia Regional Airlines | 12      | 11    | 8                   | 72.7  | 10                    | 90.9  | 1             | 8.3 |
| All Airlines                       | 191     | 188   | 154                 | 81.9  | 174                   | 92.6  | 3             | 1.6 |
| <b>Perth-Karratha</b>              |         |       |                     |       |                       |       |               |     |
| Qantas                             | 9       | 9     | 9                   | 100.0 | 9                     | 100.0 | 0             | 0.0 |
| QantasLink                         | 177     | 176   | 151                 | 85.8  | 158                   | 89.8  | 1             | 0.6 |
| Virgin Australia                   | 82      | 82    | 68                  | 82.9  | 81                    | 98.8  | 0             | 0.0 |
| Virgin Australia Regional Airlines | 4       | 4     | 2                   | 50.0  | 3                     | 75.0  | 0             | 0.0 |
| All Airlines                       | 272     | 271   | 230                 | 84.9  | 251                   | 92.6  | 1             | 0.4 |

|                                    | Sectors |       | Arrivals<br>On Time |       | Departures<br>On Time |       | Cancellations |      |
|------------------------------------|---------|-------|---------------------|-------|-----------------------|-------|---------------|------|
|                                    | Sched.  | Flown | No.                 | %     | No.                   | %     | No.           | %    |
| <b>Perth-Melbourne</b>             |         |       |                     |       |                       |       |               |      |
| Jetstar                            | 88      | 83    | 72                  | 86.7  | 64                    | 77.1  | 5             | 5.7  |
| Qantas                             | 216     | 214   | 169                 | 79.0  | 185                   | 86.4  | 2             | 0.9  |
| Virgin Australia                   | 241     | 241   | 209                 | 86.7  | 208                   | 86.3  | 0             | 0.0  |
| All Airlines                       | 545     | 538   | 450                 | 83.6  | 457                   | 84.9  | 7             | 1.3  |
| <b>Perth-Newman</b>                |         |       |                     |       |                       |       |               |      |
| Qantas                             | 4       | 4     | 4                   | 100.0 | 4                     | 100.0 | 0             | 0.0  |
| QantasLink                         | 132     | 132   | 112                 | 84.8  | 121                   | 91.7  | 0             | 0.0  |
| Virgin Australia                   | 55      | 54    | 40                  | 74.1  | 47                    | 87.0  | 1             | 1.8  |
| Virgin Australia Regional Airlines | 1       | 1     | 1                   | 100.0 | 1                     | 100.0 | 0             | 0.0  |
| All Airlines                       | 192     | 191   | 157                 | 82.2  | 173                   | 90.6  | 1             | 0.5  |
| <b>Perth-Port Hedland</b>          |         |       |                     |       |                       |       |               |      |
| Qantas                             | 4       | 3     | 3                   | 100.0 | 3                     | 100.0 | 1             | 25.0 |
| QantasLink                         | 141     | 141   | 122                 | 86.5  | 128                   | 90.8  | 0             | 0.0  |
| Virgin Australia                   | 54      | 54    | 41                  | 75.9  | 48                    | 88.9  | 0             | 0.0  |
| Virgin Australia Regional Airlines | 6       | 6     | 5                   | 83.3  | 6                     | 100.0 | 0             | 0.0  |
| All Airlines                       | 205     | 204   | 171                 | 83.8  | 185                   | 90.7  | 1             | 0.5  |
| <b>Perth-Sydney</b>                |         |       |                     |       |                       |       |               |      |
| Jetstar                            | 65      | 60    | 43                  | 71.7  | 41                    | 68.3  | 5             | 7.7  |
| Qantas                             | 207     | 205   | 133                 | 64.9  | 157                   | 76.6  | 2             | 1.0  |
| Virgin Australia                   | 175     | 174   | 165                 | 94.8  | 152                   | 87.4  | 1             | 0.6  |
| All Airlines                       | 447     | 439   | 341                 | 77.7  | 350                   | 79.7  | 8             | 1.8  |
| <b>Port Hedland-Perth</b>          |         |       |                     |       |                       |       |               |      |
| Qantas                             | 4       | 3     | 2                   | 66.7  | 2                     | 66.7  | 1             | 25.0 |
| QantasLink                         | 141     | 141   | 121                 | 85.8  | 118                   | 83.7  | 0             | 0.0  |
| Virgin Australia                   | 54      | 54    | 40                  | 74.1  | 38                    | 70.4  | 0             | 0.0  |
| Virgin Australia Regional Airlines | 6       | 6     | 6                   | 100.0 | 5                     | 83.3  | 0             | 0.0  |
| All Airlines                       | 205     | 204   | 169                 | 82.8  | 163                   | 79.9  | 1             | 0.5  |
| <b>Port Lincoln-Adelaide</b>       |         |       |                     |       |                       |       |               |      |
| QantasLink                         | 99      | 97    | 94                  | 96.9  | 94                    | 96.9  | 2             | 2.0  |
| Rex Airlines                       | 144     | 132   | 79                  | 59.8  | 80                    | 60.6  | 12            | 8.3  |
| All Airlines                       | 243     | 229   | 173                 | 75.5  | 174                   | 76.0  | 14            | 5.8  |
| <b>Port Macquarie-Sydney</b>       |         |       |                     |       |                       |       |               |      |
| QantasLink                         | 112     | 110   | 100                 | 90.9  | 92                    | 83.6  | 2             | 1.8  |
| Rex Airlines                       | 52      | 46    | 31                  | 67.4  | 36                    | 78.3  | 6             | 11.5 |
| All Airlines                       | 164     | 156   | 131                 | 84.0  | 128                   | 82.1  | 8             | 4.9  |
| <b>Proserpine-Brisbane</b>         |         |       |                     |       |                       |       |               |      |
| Jetstar                            | 43      | 42    | 39                  | 92.9  | 39                    | 92.9  | 1             | 2.3  |
| Virgin Australia                   | 34      | 34    | 27                  | 79.4  | 31                    | 91.2  | 0             | 0.0  |
| All Airlines                       | 77      | 76    | 66                  | 86.8  | 70                    | 92.1  | 1             | 1.3  |
| <b>Rockhampton-Brisbane</b>        |         |       |                     |       |                       |       |               |      |
| QantasLink                         | 187     | 180   | 164                 | 91.1  | 159                   | 88.3  | 7             | 3.7  |
| Virgin Australia                   | 148     | 148   | 122                 | 82.4  | 127                   | 85.8  | 0             | 0.0  |
| All Airlines                       | 335     | 328   | 286                 | 87.2  | 286                   | 87.2  | 7             | 2.1  |
| <b>Sunshine Coast-Melbourne</b>    |         |       |                     |       |                       |       |               |      |
| Jetstar                            | 106     | 106   | 85                  | 80.2  | 76                    | 71.7  | 0             | 0.0  |
| Qantas                             | 36      | 36    | 28                  | 77.8  | 25                    | 69.4  | 0             | 0.0  |
| Virgin Australia                   | 70      | 69    | 61                  | 88.4  | 54                    | 78.3  | 1             | 1.4  |
| All Airlines                       | 212     | 211   | 174                 | 82.5  | 155                   | 73.5  | 1             | 0.5  |

|                               | Sectors |       | Arrivals<br>On Time |      | Departures<br>On Time |      | Cancellations |      |
|-------------------------------|---------|-------|---------------------|------|-----------------------|------|---------------|------|
|                               | Sched.  | Flown | No.                 | %    | No.                   | %    | No.           | %    |
| <b>Sunshine Coast-Sydney</b>  |         |       |                     |      |                       |      |               |      |
| Jetstar                       | 99      | 99    | 87                  | 87.9 | 88                    | 88.9 | 0             | 0.0  |
| QantasLink                    | 84      | 81    | 50                  | 61.7 | 47                    | 58.0 | 3             | 3.6  |
| Virgin Australia              | 72      | 72    | 50                  | 69.4 | 53                    | 73.6 | 0             | 0.0  |
| All Airlines                  | 255     | 252   | 187                 | 74.2 | 188                   | 74.6 | 3             | 1.2  |
| <b>Sydney-Adelaide</b>        |         |       |                     |      |                       |      |               |      |
| Jetstar                       | 161     | 155   | 117                 | 75.5 | 115                   | 74.2 | 6             | 3.7  |
| Qantas                        | 237     | 235   | 203                 | 86.4 | 206                   | 87.7 | 2             | 0.8  |
| QantasLink                    | 26      | 25    | 13                  | 52.0 | 22                    | 88.0 | 1             | 3.8  |
| Virgin Australia              | 195     | 191   | 151                 | 79.1 | 157                   | 82.2 | 4             | 2.1  |
| All Airlines                  | 619     | 606   | 484                 | 79.9 | 500                   | 82.5 | 13            | 2.1  |
| <b>Sydney-Albury</b>          |         |       |                     |      |                       |      |               |      |
| QantasLink                    | 99      | 98    | 80                  | 81.6 | 73                    | 74.5 | 1             | 1.0  |
| Rex Airlines                  | 67      | 62    | 51                  | 82.3 | 47                    | 75.8 | 5             | 7.5  |
| All Airlines                  | 166     | 160   | 131                 | 81.9 | 120                   | 75.0 | 6             | 3.6  |
| <b>Sydney-Ballina</b>         |         |       |                     |      |                       |      |               |      |
| Jetstar                       | 82      | 82    | 67                  | 81.7 | 66                    | 80.5 | 0             | 0.0  |
| QantasLink                    | 56      | 55    | 46                  | 83.6 | 47                    | 85.5 | 1             | 1.8  |
| Virgin Australia              | 30      | 30    | 27                  | 90.0 | 28                    | 93.3 | 0             | 0.0  |
| All Airlines                  | 168     | 167   | 140                 | 83.8 | 141                   | 84.4 | 1             | 0.6  |
| <b>Sydney-Brisbane</b>        |         |       |                     |      |                       |      |               |      |
| Jetstar                       | 272     | 258   | 176                 | 68.2 | 162                   | 62.8 | 14            | 5.1  |
| Qantas                        | 514     | 503   | 430                 | 85.5 | 420                   | 83.5 | 11            | 2.1  |
| Virgin Australia              | 446     | 440   | 363                 | 82.5 | 365                   | 83.0 | 6             | 1.3  |
| All Airlines                  | 1 232   | 1 201 | 969                 | 80.7 | 947                   | 78.9 | 31            | 2.5  |
| <b>Sydney-Cairns</b>          |         |       |                     |      |                       |      |               |      |
| Jetstar                       | 114     | 113   | 95                  | 84.1 | 88                    | 77.9 | 1             | 0.9  |
| Qantas                        | 45      | 44    | 40                  | 90.9 | 37                    | 84.1 | 1             | 2.2  |
| Virgin Australia              | 79      | 78    | 70                  | 89.7 | 68                    | 87.2 | 1             | 1.3  |
| All Airlines                  | 238     | 235   | 205                 | 87.2 | 193                   | 82.1 | 3             | 1.3  |
| <b>Sydney-Canberra</b>        |         |       |                     |      |                       |      |               |      |
| QantasLink                    | 325     | 309   | 265                 | 85.8 | 270                   | 87.4 | 16            | 4.9  |
| Virgin Australia              | 237     | 233   | 222                 | 95.3 | 219                   | 94.0 | 4             | 1.7  |
| All Airlines                  | 562     | 542   | 487                 | 89.9 | 489                   | 90.2 | 20            | 3.6  |
| <b>Sydney-Coffs Harbour</b>   |         |       |                     |      |                       |      |               |      |
| QantasLink                    | 112     | 111   | 91                  | 82.0 | 85                    | 76.6 | 1             | 0.9  |
| Rex Airlines                  | 74      | 73    | 58                  | 79.5 | 52                    | 71.2 | 1             | 1.4  |
| All Airlines                  | 186     | 184   | 149                 | 81.0 | 137                   | 74.5 | 2             | 1.1  |
| <b>Sydney-Dubbo</b>           |         |       |                     |      |                       |      |               |      |
| QantasLink                    | 112     | 110   | 97                  | 88.2 | 93                    | 84.5 | 2             | 1.8  |
| Rex Airlines                  | 89      | 68    | 56                  | 82.4 | 53                    | 77.9 | 21            | 23.6 |
| All Airlines                  | 201     | 178   | 153                 | 86.0 | 146                   | 82.0 | 23            | 11.4 |
| <b>Sydney-Gold Coast</b>      |         |       |                     |      |                       |      |               |      |
| Jetstar                       | 305     | 296   | 240                 | 81.1 | 236                   | 79.7 | 9             | 3.0  |
| Qantas                        | 131     | 131   | 109                 | 83.2 | 106                   | 80.9 | 0             | 0.0  |
| Virgin Australia              | 302     | 300   | 237                 | 79.0 | 245                   | 81.7 | 2             | 0.7  |
| All Airlines                  | 738     | 727   | 586                 | 80.6 | 587                   | 80.7 | 11            | 1.5  |
| <b>Sydney-Hamilton Island</b> |         |       |                     |      |                       |      |               |      |
| Qantas                        | 32      | 32    | 23                  | 71.9 | 23                    | 71.9 | 0             | 0.0  |
| Virgin Australia              | 31      | 31    | 26                  | 83.9 | 26                    | 83.9 | 0             | 0.0  |
| All Airlines                  | 63      | 63    | 49                  | 77.8 | 49                    | 77.8 | 0             | 0.0  |

|                              | Sectors |       | Arrivals<br>On Time |      | Departures<br>On Time |      | Cancellations |      |
|------------------------------|---------|-------|---------------------|------|-----------------------|------|---------------|------|
|                              | Sched.  | Flown | No.                 | %    | No.                   | %    | No.           | %    |
| <b>Sydney-Hobart</b>         |         |       |                     |      |                       |      |               |      |
| Jetstar                      | 84      | 84    | 64                  | 76.2 | 64                    | 76.2 | 0             | 0.0  |
| QantasLink                   | 85      | 82    | 66                  | 80.5 | 64                    | 78.0 | 3             | 3.5  |
| Virgin Australia             | 66      | 66    | 62                  | 93.9 | 61                    | 92.4 | 0             | 0.0  |
| All Airlines                 | 235     | 232   | 192                 | 82.8 | 189                   | 81.5 | 3             | 1.3  |
| <b>Sydney-Launceston</b>     |         |       |                     |      |                       |      |               |      |
| Jetstar                      | 54      | 54    | 41                  | 75.9 | 39                    | 72.2 | 0             | 0.0  |
| QantasLink                   | 30      | 29    | 22                  | 75.9 | 23                    | 79.3 | 1             | 3.3  |
| Virgin Australia             | 30      | 30    | 24                  | 80.0 | 19                    | 63.3 | 0             | 0.0  |
| All Airlines                 | 114     | 113   | 87                  | 77.0 | 81                    | 71.7 | 1             | 0.9  |
| <b>Sydney-Melbourne</b>      |         |       |                     |      |                       |      |               |      |
| Jetstar                      | 518     | 495   | 378                 | 76.4 | 373                   | 75.4 | 23            | 4.4  |
| Qantas                       | 788     | 747   | 617                 | 82.6 | 668                   | 89.4 | 41            | 5.2  |
| QantasLink                   | 85      | 72    | 34                  | 47.2 | 49                    | 68.1 | 13            | 15.3 |
| Virgin Australia             | 732     | 712   | 555                 | 77.9 | 595                   | 83.6 | 20            | 2.7  |
| All Airlines                 | 2 123   | 2 026 | 1 584               | 78.2 | 1 685                 | 83.2 | 97            | 4.6  |
| <b>Sydney-Perth</b>          |         |       |                     |      |                       |      |               |      |
| Jetstar                      | 65      | 63    | 51                  | 81.0 | 42                    | 66.7 | 2             | 3.1  |
| Qantas                       | 206     | 205   | 154                 | 75.1 | 157                   | 76.6 | 1             | 0.5  |
| Virgin Australia             | 188     | 187   | 160                 | 85.6 | 148                   | 79.1 | 1             | 0.5  |
| All Airlines                 | 459     | 455   | 365                 | 80.2 | 347                   | 76.3 | 4             | 0.9  |
| <b>Sydney-Port Macquarie</b> |         |       |                     |      |                       |      |               |      |
| QantasLink                   | 112     | 110   | 93                  | 84.5 | 90                    | 81.8 | 2             | 1.8  |
| Rex Airlines                 | 58      | 52    | 38                  | 73.1 | 35                    | 67.3 | 6             | 10.3 |
| All Airlines                 | 170     | 162   | 131                 | 80.9 | 125                   | 77.2 | 8             | 4.7  |
| <b>Sydney-Sunshine Coast</b> |         |       |                     |      |                       |      |               |      |
| Jetstar                      | 99      | 99    | 90                  | 90.9 | 87                    | 87.9 | 0             | 0.0  |
| QantasLink                   | 84      | 81    | 46                  | 56.8 | 54                    | 66.7 | 3             | 3.6  |
| Virgin Australia             | 72      | 72    | 56                  | 77.8 | 56                    | 77.8 | 0             | 0.0  |
| All Airlines                 | 255     | 252   | 192                 | 76.2 | 197                   | 78.2 | 3             | 1.2  |
| <b>Sydney-Wagga Wagga</b>    |         |       |                     |      |                       |      |               |      |
| QantasLink                   | 108     | 106   | 98                  | 92.5 | 92                    | 86.8 | 2             | 1.9  |
| Rex Airlines                 | 81      | 76    | 51                  | 67.1 | 54                    | 71.1 | 5             | 6.2  |
| All Airlines                 | 189     | 182   | 149                 | 81.9 | 146                   | 80.2 | 7             | 3.7  |
| <b>Townsville-Brisbane</b>   |         |       |                     |      |                       |      |               |      |
| Jetstar                      | 75      | 75    | 58                  | 77.3 | 62                    | 82.7 | 0             | 0.0  |
| Qantas                       | 23      | 23    | 21                  | 91.3 | 21                    | 91.3 | 0             | 0.0  |
| QantasLink                   | 132     | 126   | 111                 | 88.1 | 114                   | 90.5 | 6             | 4.5  |
| Virgin Australia             | 137     | 136   | 128                 | 94.1 | 124                   | 91.2 | 1             | 0.7  |
| All Airlines                 | 367     | 360   | 318                 | 88.3 | 321                   | 89.2 | 7             | 1.9  |
| <b>Wagga Wagga-Sydney</b>    |         |       |                     |      |                       |      |               |      |
| QantasLink                   | 108     | 105   | 94                  | 89.5 | 93                    | 88.6 | 3             | 2.8  |
| Rex Airlines                 | 81      | 78    | 57                  | 73.1 | 59                    | 75.6 | 3             | 3.7  |
| All Airlines                 | 189     | 183   | 151                 | 82.5 | 152                   | 83.1 | 6             | 3.2  |

## Airports

The following data reports by airport against flights operated on published routes only. This month, 8 major city airports and 29 regional city airports are covered.

| Airport          | Arrivals |         |      | Departures |         |      |
|------------------|----------|---------|------|------------|---------|------|
|                  | Sectors  | On Time |      | Sectors    | On Time |      |
|                  | Flown    | No.     | %    | Flown      | No.     | %    |
| <b>Adelaide</b>  |          |         |      |            |         |      |
| Jetstar          | 463      | 359     | 77.5 | 461        | 364     | 79.0 |
| Qantas           | 573      | 487     | 85.0 | 571        | 499     | 87.4 |
| QantasLink       | 438      | 389     | 88.8 | 436        | 389     | 89.2 |
| Rex Airlines     | 132      | 79      | 59.8 | 132        | 79      | 59.8 |
| Virgin Australia | 707      | 576     | 81.5 | 707        | 532     | 75.2 |
| All Airlines     | 2,313    | 1,890   | 81.7 | 2,307      | 1,863   | 80.8 |

Relates to services to and from Alice Springs, Brisbane, Canberra, Gold Coast, Melbourne, Perth, Port Lincoln and Sydney only.

### Albury

|              |     |     |      |     |     |      |
|--------------|-----|-----|------|-----|-----|------|
| QantasLink   | 98  | 80  | 81.6 | 98  | 75  | 76.5 |
| Rex Airlines | 62  | 51  | 82.3 | 62  | 56  | 90.3 |
| All Airlines | 160 | 131 | 81.9 | 160 | 131 | 81.9 |

Relates to services to and from Sydney only.

### Alice Springs

|                  |    |    |      |    |    |      |
|------------------|----|----|------|----|----|------|
| QantasLink       | 30 | 27 | 90.0 | 30 | 25 | 83.3 |
| Virgin Australia | 13 | 7  | 53.8 | 13 | 6  | 46.2 |
| All Airlines     | 43 | 34 | 79.1 | 43 | 31 | 72.1 |

Relates to services to and from Adelaide only.

### Ayers Rock

|                  |    |    |       |    |    |      |
|------------------|----|----|-------|----|----|------|
| Jetstar          | 21 | 18 | 85.7  | 21 | 17 | 81.0 |
| Virgin Australia | 13 | 13 | 100.0 | 13 | 11 | 84.6 |
| All Airlines     | 34 | 31 | 91.2  | 34 | 28 | 82.4 |

Relates to services to and from Melbourne only.

### Ballina

|                  |     |     |      |     |     |      |
|------------------|-----|-----|------|-----|-----|------|
| Jetstar          | 82  | 67  | 81.7 | 82  | 68  | 82.9 |
| QantasLink       | 55  | 46  | 83.6 | 54  | 48  | 88.9 |
| Virgin Australia | 30  | 27  | 90.0 | 30  | 23  | 76.7 |
| All Airlines     | 167 | 140 | 83.8 | 166 | 139 | 83.7 |

Relates to services to and from Sydney only.

### Brisbane

|                  |       |       |      |       |       |      |
|------------------|-------|-------|------|-------|-------|------|
| Jetstar          | 957   | 715   | 74.7 | 956   | 675   | 70.6 |
| Qantas           | 1,140 | 984   | 86.3 | 1,138 | 1,021 | 89.7 |
| QantasLink       | 1,381 | 1,237 | 89.6 | 1,383 | 1,214 | 87.8 |
| Virgin Australia | 2,049 | 1,755 | 85.7 | 2,054 | 1,775 | 86.4 |
| All Airlines     | 5,527 | 4,691 | 84.9 | 5,531 | 4,685 | 84.7 |

Relates to services to and from Adelaide, Cairns, Canberra, Darwin, Emerald, Gladstone, Hamilton Island, Hobart, Launceston, Mackay, Melbourne, Mount Isa, Newcastle, Perth, Proserpine, Rockhampton, Sydney and Townsville only.

| Airport  | Arrivals |         |      | Departures |         |      |
|--|----------|---------|------|------------|---------|------|
|  | Sectors  | On Time |      | Sectors    | On Time |      |
|  | Flown    | No.     | %    | Flown      | No.     | %    |
| <b>Broome</b>  |          |         |      |            |         |      |
| QantasLink   | 86       | 77      | 89.5 | 86         | 80      | 93.0 |
| Virgin Australia   | 53       | 48      | 90.6 | 53         | 44      | 83.0 |
| Virgin Australia Regional Airlines   | 25       | 17      | 68.0 | 25         | 15      | 60.0 |
| All Airlines   | 164      | 142     | 86.6 | 164        | 139     | 84.8 |
| Relates to services to and from Perth only.  |          |         |      |            |         |      |
| <b>Cairns</b>  |          |         |      |            |         |      |
| Jetstar  | 304      | 255     | 83.9 | 302        | 258     | 85.4 |
| Qantas   | 97       | 88      | 90.7 | 96         | 87      | 90.6 |
| QantasLink   | 160      | 144     | 90.0 | 160        | 146     | 91.3 |
| Virgin Australia   | 294      | 264     | 89.8 | 294        | 253     | 86.1 |
| All Airlines   | 855      | 751     | 87.8 | 852        | 744     | 87.3 |
| Relates to services to and from Brisbane, Melbourne and Sydney only.                       |          |         |      |            |         |      |
| <b>Canberra</b>  |          |         |      |            |         |      |
| Jetstar  | 77       | 59      | 76.6 | 77         | 54      | 70.1 |
| Qantas   | 3        | 2       | 66.7 | 3          | 2       | 66.7 |
| QantasLink   | 787      | 693     | 88.1 | 781        | 677     | 86.7 |
| Virgin Australia   | 487      | 435     | 89.3 | 487        | 443     | 91.0 |
| All Airlines   | 1,354    | 1,189   | 87.8 | 1,348      | 1,176   | 87.2 |
| Relates to services to and from Adelaide, Brisbane, Gold Coast, Melbourne and Sydney only. |          |         |      |            |         |      |
| <b>Coffs Harbour</b>   |          |         |      |            |         |      |
| QantasLink   | 111      | 91      | 82.0 | 111        | 87      | 78.4 |
| Rex Airlines   | 73       | 58      | 79.5 | 79         | 63      | 79.7 |
| All Airlines   | 184      | 149     | 81.0 | 190        | 150     | 78.9 |
| Relates to services to and from Sydney only.   |          |         |      |            |         |      |
| <b>Darwin</b>  |          |         |      |            |         |      |
| Jetstar  | 56       | 47      | 83.9 | 56         | 43      | 76.8 |
| Qantas   | 92       | 82      | 89.1 | 90         | 84      | 93.3 |
| QantasLink   | 27       | 19      | 70.4 | 27         | 21      | 77.8 |
| Virgin Australia   | 75       | 73      | 97.3 | 75         | 68      | 90.7 |
| Virgin Australia Regional Airlines   | 6        | 4       | 66.7 | 6          | 5       | 83.3 |
| All Airlines   | 256      | 225     | 87.9 | 254        | 221     | 87.0 |
| Relates to services to and from Brisbane, Melbourne and Perth only.                        |          |         |      |            |         |      |
| <b>Devonport</b>   |          |         |      |            |         |      |
| QantasLink   | 93       | 66      | 71.0 | 93         | 68      | 73.1 |
| Rex Airlines   | 40       | 33      | 82.5 | 40         | 33      | 82.5 |
| All Airlines   | 133      | 99      | 74.4 | 133        | 101     | 75.9 |
| Relates to services to and from Melbourne only.  |          |         |      |            |         |      |
| <b>Dubbo</b>   |          |         |      |            |         |      |
| QantasLink   | 110      | 97      | 88.2 | 110        | 93      | 84.5 |
| Rex Airlines   | 68       | 56      | 82.4 | 74         | 53      | 71.6 |
| All Airlines   | 178      | 153     | 86.0 | 184        | 146     | 79.3 |
| Relates to services to and from Sydney only.   |          |         |      |            |         |      |
| <b>Emerald</b>   |          |         |      |            |         |      |
| QantasLink   | 113      | 103     | 91.2 | 113        | 104     | 92.0 |
| Virgin Australia   | 26       | 23      | 88.5 | 26         | 23      | 88.5 |
| All Airlines   | 139      | 126     | 90.6 | 139        | 127     | 91.4 |
| Relates to services to and from Brisbane only.   |          |         |      |            |         |      |

| Airport  | Arrivals         |         |       | Departures       |         |      |
|--|------------------|---------|-------|------------------|---------|------|
|  | Sectors<br>Flown | On Time |       | Sectors<br>Flown | On Time |      |
|  |                  | No.     | %     |                  | No.     | %    |
| <b>Gladstone</b>   |                  |         |       |                  |         |      |
| QantasLink   | 126              | 106     | 84.1  | 126              | 112     | 88.9 |
| Virgin Australia   | 33               | 30      | 90.9  | 33               | 30      | 90.9 |
| All Airlines   | 159              | 136     | 85.5  | 159              | 142     | 89.3 |
| Relates to services to and from Brisbane only.                                 |                  |         |       |                  |         |      |
| <b>Gold Coast</b>  |                  |         |       |                  |         |      |
| Jetstar  | 584              | 479     | 82.0  | 582              | 464     | 79.7 |
| Qantas   | 188              | 162     | 86.2  | 189              | 160     | 84.7 |
| QantasLink   | 24               | 17      | 70.8  | 22               | 12      | 54.5 |
| Virgin Australia   | 612              | 498     | 81.4  | 611              | 452     | 74.0 |
| All Airlines   | 1,408            | 1,156   | 82.1  | 1,404            | 1,088   | 77.5 |
| Relates to services to and from Adelaide, Canberra, Melbourne and Sydney only. |                  |         |       |                  |         |      |
| <b>Hamilton Island</b>   |                  |         |       |                  |         |      |
| Qantas   | 32               | 23      | 71.9  | 32               | 20      | 62.5 |
| QantasLink   | 28               | 19      | 67.9  | 28               | 16      | 57.1 |
| Virgin Australia   | 70               | 64      | 91.4  | 70               | 59      | 84.3 |
| All Airlines   | 130              | 106     | 81.5  | 130              | 95      | 73.1 |
| Relates to services to and from Brisbane and Sydney only.                      |                  |         |       |                  |         |      |
| <b>Hobart</b>  |                  |         |       |                  |         |      |
| Jetstar  | 282              | 214     | 75.9  | 282              | 201     | 71.3 |
| Qantas   | 26               | 26      | 100.0 | 26               | 24      | 92.3 |
| QantasLink   | 180              | 144     | 80.0  | 180              | 139     | 77.2 |
| Virgin Australia   | 244              | 211     | 86.5  | 244              | 201     | 82.4 |
| All Airlines   | 732              | 595     | 81.3  | 732              | 565     | 77.2 |
| Relates to services to and from Brisbane, Melbourne and Sydney only.           |                  |         |       |                  |         |      |
| <b>Kalgoorlie</b>  |                  |         |       |                  |         |      |
| Qantas   | 9                | 6       | 66.7  | 9                | 7       | 77.8 |
| QantasLink   | 73               | 62      | 84.9  | 73               | 64      | 87.7 |
| Virgin Australia   | 95               | 78      | 82.1  | 95               | 71      | 74.7 |
| Virgin Australia Regional Airlines   | 11               | 8       | 72.7  | 11               | 7       | 63.6 |
| All Airlines   | 188              | 154     | 81.9  | 188              | 149     | 79.3 |
| Relates to services to and from Perth only.                                    |                  |         |       |                  |         |      |
| <b>Karratha</b>  |                  |         |       |                  |         |      |
| Qantas   | 9                | 9       | 100.0 | 9                | 7       | 77.8 |
| QantasLink   | 176              | 151     | 85.8  | 174              | 136     | 78.2 |
| Virgin Australia   | 82               | 68      | 82.9  | 81               | 73      | 90.1 |
| Virgin Australia Regional Airlines   | 4                | 2       | 50.0  | 4                | 3       | 75.0 |
| All Airlines   | 271              | 230     | 84.9  | 268              | 219     | 81.7 |
| Relates to services to and from Perth only.                                    |                  |         |       |                  |         |      |
| <b>Launceston</b>  |                  |         |       |                  |         |      |
| Jetstar  | 172              | 128     | 74.4  | 171              | 119     | 69.6 |
| QantasLink   | 139              | 100     | 71.9  | 139              | 108     | 77.7 |
| Virgin Australia   | 143              | 110     | 76.9  | 143              | 97      | 67.8 |
| All Airlines   | 454              | 338     | 74.4  | 453              | 324     | 71.5 |
| Relates to services to and from Brisbane, Melbourne and Sydney only.           |                  |         |       |                  |         |      |

| Airport          | Arrivals |         |       | Departures |         |       |
|------------------|----------|---------|-------|------------|---------|-------|
|                  | Sectors  | On Time |       | Sectors    | On Time |       |
|                  | Flown    | No.     | %     | Flown      | No.     | %     |
| <b>Mackay</b>    |          |         |       |            |         |       |
| Jetstar          | 30       | 18      | 60.0  | 29         | 21      | 72.4  |
| Qantas           | 4        | 4       | 100.0 | 4          | 4       | 100.0 |
| QantasLink       | 164      | 155     | 94.5  | 166        | 158     | 95.2  |
| Virgin Australia | 131      | 121     | 92.4  | 131        | 124     | 94.7  |
| All Airlines     | 329      | 298     | 90.6  | 330        | 307     | 93.0  |

Relates to services to and from Brisbane only.

### Melbourne

|                  |       |       |      |       |       |      |
|------------------|-------|-------|------|-------|-------|------|
| Jetstar          | 1,770 | 1,350 | 76.3 | 1,776 | 1,259 | 70.9 |
| Qantas           | 1,740 | 1,478 | 84.9 | 1,745 | 1,534 | 87.9 |
| QantasLink       | 797   | 619   | 77.7 | 802   | 613   | 76.4 |
| Rex Airlines     | 132   | 88    | 66.7 | 132   | 101   | 76.5 |
| Virgin Australia | 2,419 | 1,932 | 79.9 | 2,420 | 1,995 | 82.4 |
| All Airlines     | 6,858 | 5,467 | 79.7 | 6,875 | 5,502 | 80.0 |

Relates to services to and from Adelaide, Ayers Rock, Brisbane, Cairns, Canberra, Darwin, Devonport, Gold Coast, Hobart, Launceston, Mildura, Newcastle, Perth, Sunshine Coast and Sydney only.

### Mildura

|              |     |     |      |     |     |      |
|--------------|-----|-----|------|-----|-----|------|
| QantasLink   | 88  | 70  | 79.5 | 87  | 69  | 79.3 |
| Rex Airlines | 92  | 64  | 69.6 | 92  | 66  | 71.7 |
| All Airlines | 180 | 134 | 74.4 | 179 | 135 | 75.4 |

Relates to services to and from Melbourne only.

### Mount Isa

|                  |    |    |       |    |    |       |
|------------------|----|----|-------|----|----|-------|
| Qantas           | 43 | 41 | 95.3  | 43 | 40 | 93.0  |
| QantasLink       | 12 | 11 | 91.7  | 12 | 11 | 91.7  |
| Virgin Australia | 13 | 13 | 100.0 | 13 | 13 | 100.0 |
| All Airlines     | 68 | 65 | 95.6  | 68 | 64 | 94.1  |

Relates to services to and from Brisbane only.

### Newcastle

|                  |     |     |      |     |     |      |
|------------------|-----|-----|------|-----|-----|------|
| Jetstar          | 117 | 106 | 90.6 | 116 | 99  | 85.3 |
| QantasLink       | 152 | 141 | 92.8 | 152 | 142 | 93.4 |
| Virgin Australia | 119 | 103 | 86.6 | 119 | 104 | 87.4 |
| All Airlines     | 388 | 350 | 90.2 | 387 | 345 | 89.1 |

Relates to services to and from Brisbane and Melbourne only.

### Newman

|                                    |     |     |       |     |     |       |
|------------------------------------|-----|-----|-------|-----|-----|-------|
| Qantas                             | 4   | 4   | 100.0 | 4   | 4   | 100.0 |
| QantasLink                         | 132 | 112 | 84.8  | 131 | 114 | 87.0  |
| Virgin Australia                   | 54  | 40  | 74.1  | 54  | 36  | 66.7  |
| Virgin Australia Regional Airlines | 1   | 1   | 100.0 | 1   | 1   | 100.0 |
| All Airlines                       | 191 | 157 | 82.2  | 190 | 155 | 81.6  |

Relates to services to and from Perth only.

| Airport  | Arrivals |         |       | Departures |         |      |
|--|----------|---------|-------|------------|---------|------|
|  | Sectors  | On Time |       | Sectors    | On Time |      |
|  | Flown    | No.     | %     | Flown      | No.     | %    |
| <b>Perth</b>   |          |         |       |            |         |      |
| Jetstar  | 209      | 156     | 74.6  | 206        | 144     | 69.9 |
| Qantas   | 729      | 597     | 81.9  | 730        | 626     | 85.8 |
| QantasLink   | 632      | 549     | 86.9  | 635        | 580     | 91.3 |
| Virgin Australia   | 970      | 810     | 83.5  | 971        | 873     | 89.9 |
| Virgin Australia Regional Airlines   | 53       | 40      | 75.5  | 53         | 43      | 81.1 |
| All Airlines   | 2,593    | 2,152   | 83.0  | 2,595      | 2,266   | 87.3 |
| Relates to services to and from Adelaide, Brisbane, Broome, Darwin, Kalgoorlie, Karratha, Melbourne, Newman, Port Hedland and Sydney only. |          |         |       |            |         |      |
| <b>Port Hedland</b>  |          |         |       |            |         |      |
| Qantas   | 3        | 3       | 100.0 | 3          | 2       | 66.7 |
| QantasLink   | 141      | 122     | 86.5  | 141        | 118     | 83.7 |
| Virgin Australia   | 54       | 41      | 75.9  | 54         | 38      | 70.4 |
| Virgin Australia Regional Airlines   | 6        | 5       | 83.3  | 6          | 5       | 83.3 |
| All Airlines   | 204      | 171     | 83.8  | 204        | 163     | 79.9 |
| Relates to services to and from Perth only.  |          |         |       |            |         |      |
| <b>Port Lincoln</b>  |          |         |       |            |         |      |
| QantasLink   | 97       | 92      | 94.8  | 97         | 94      | 96.9 |
| Rex Airlines   | 132      | 75      | 56.8  | 132        | 80      | 60.6 |
| All Airlines   | 229      | 167     | 72.9  | 229        | 174     | 76.0 |
| Relates to services to and from Adelaide only.   |          |         |       |            |         |      |
| <b>Port Macquarie</b>  |          |         |       |            |         |      |
| QantasLink   | 110      | 93      | 84.5  | 110        | 92      | 83.6 |
| Rex Airlines   | 52       | 38      | 73.1  | 46         | 36      | 78.3 |
| All Airlines   | 162      | 131     | 80.9  | 156        | 128     | 82.1 |
| Relates to services to and from Sydney only.   |          |         |       |            |         |      |
| <b>Proserpine</b>  |          |         |       |            |         |      |
| Jetstar  | 42       | 38      | 90.5  | 42         | 39      | 92.9 |
| Virgin Australia   | 34       | 31      | 91.2  | 34         | 31      | 91.2 |
| All Airlines   | 76       | 69      | 90.8  | 76         | 70      | 92.1 |
| Relates to services to and from Brisbane only.   |          |         |       |            |         |      |
| <b>Rockhampton</b>   |          |         |       |            |         |      |
| QantasLink   | 181      | 161     | 89.0  | 180        | 159     | 88.3 |
| Virgin Australia   | 148      | 125     | 84.5  | 148        | 127     | 85.8 |
| All Airlines   | 329      | 286     | 86.9  | 328        | 286     | 87.2 |
| Relates to services to and from Brisbane only.   |          |         |       |            |         |      |
| <b>Sunshine Coast</b>  |          |         |       |            |         |      |
| Jetstar  | 205      | 164     | 80.0  | 205        | 164     | 80.0 |
| Qantas   | 36       | 32      | 88.9  | 36         | 25      | 69.4 |
| QantasLink   | 81       | 46      | 56.8  | 81         | 47      | 58.0 |
| Virgin Australia   | 142      | 116     | 81.7  | 141        | 107     | 75.9 |
| All Airlines   | 464      | 358     | 77.2  | 463        | 343     | 74.1 |
| Relates to services to and from Melbourne and Sydney only.   |          |         |       |            |         |      |

| Airport          | Arrivals |         |      | Departures |         |      |
|------------------|----------|---------|------|------------|---------|------|
|                  | Sectors  | On Time |      | Sectors    | On Time |      |
|                  | Flown    | No.     | %    | Flown      | No.     | %    |
| <b>Sydney</b>    |          |         |      |            |         |      |
| Jetstar          | 1,692    | 1,328   | 78.5 | 1,699      | 1,272   | 74.9 |
| Qantas           | 1,898    | 1,573   | 82.9 | 1,897      | 1,617   | 85.2 |
| QantasLink       | 1,183    | 1,018   | 86.1 | 1,188      | 962     | 81.0 |
| Rex Airlines     | 339      | 256     | 75.5 | 331        | 241     | 72.8 |
| Virgin Australia | 2,374    | 1,965   | 82.8 | 2,370      | 1,987   | 83.8 |
| All Airlines     | 7,486    | 6,140   | 82.0 | 7,485      | 6,079   | 81.2 |

Relates to services to and from Adelaide, Albury, Ballina, Brisbane, Cairns, Canberra, Coffs Harbour, Dubbo, Gold Coast, Hamilton Island, Hobart, Launceston, Melbourne, Perth, Port Macquarie, Sunshine Coast and Wagga Wagga only.

#### Townsville

|                  |     |     |      |     |     |      |
|------------------|-----|-----|------|-----|-----|------|
| Jetstar          | 75  | 55  | 73.3 | 75  | 62  | 82.7 |
| Qantas           | 22  | 20  | 90.9 | 23  | 21  | 91.3 |
| QantasLink       | 126 | 116 | 92.1 | 126 | 114 | 90.5 |
| Virgin Australia | 136 | 131 | 96.3 | 136 | 124 | 91.2 |
| All Airlines     | 359 | 322 | 89.7 | 360 | 321 | 89.2 |

Relates to services to and from Brisbane only.

#### Wagga Wagga

|              |     |     |      |     |     |      |
|--------------|-----|-----|------|-----|-----|------|
| QantasLink   | 106 | 98  | 92.5 | 105 | 93  | 88.6 |
| Rex Airlines | 76  | 51  | 67.1 | 78  | 59  | 75.6 |
| All Airlines | 182 | 149 | 81.9 | 183 | 152 | 83.1 |

Relates to services to and from Sydney only.

## Definitions

---

|                              |  |
|------------------------------|--|
| On time arrival              | A flight arrival is counted as "on time" if it arrived at the gate before 15 minutes after the scheduled arrival time shown in the carriers' schedule.<br>Neither diverted nor cancelled flights count as on time. |
| On time departure            | A flight departure is counted as "on time" if it departs the gate before 15 minutes after the scheduled departure time shown in the carriers' schedule.  |
| Cancellation                 | A flight removed from service within 7 days of scheduled departure is regarded as a cancellation.  |
| On time departure percentage | The percentage of on time departures is measured against the number of departures <i>operated</i> on any particular sector.  |
| On time arrival percentage   | The percentage of on time arrivals is measured against the number of arrivals <i>operated</i> on any particular sector.  |
| Cancellation percentage      | The percentage of cancellations is measured against the number of services <i>scheduled</i> on any particular sector.  |

---

## Airlines and Reporting

Data has been gathered since November 2003, although some airlines commenced reporting at a later date, including Jetstar which first reported in May 2004, Tigerair Australia in April 2008, Virgin Australia Regional Airlines in May 2013, Skytrans Australia in May 2023, Bonza in November 2023 and Hinterland in March 2024. Tigerair Australia ceased operations in March 2020 and data was not received for that month. Bonza ceased operations at the end of April 2024 and data was not received for that month.

Virgin Blue was rebranded as Virgin Australia in May 2011 and Tiger Airways was rebranded as Tigerair Australia in August 2013. Skytrans was rebranded as SmartLynx Australia in July 2025 and then rebranded as Skytrans Australia in February 2026. Time series data in Microsoft Excel spreadsheet format on the BITRE website have been revised to reflect these changes. With effect from August 2021, Regional Express is reported as Rex Airlines. Rex Airlines commenced jet services between selected major cities in March 2021. These domestic jet services ceased in July 2024.

Services operated by Skywest on behalf of Virgin Australia using ATR/F100 aircraft commenced in November 2011 and were shown separately as Virgin Australia – ATR/F100 Operations. Virgin Australia Regional Airlines commenced operations in May 2013. It was formed after the acquisition of Skywest by Virgin Australia and represented a combination of operations previously reported under Skywest and Virgin Australia – ATR/F100 Operations. In February 2016, Virgin Australia transferred their ATR fleet from Virgin Australia Regional Airlines to Virgin Australia.