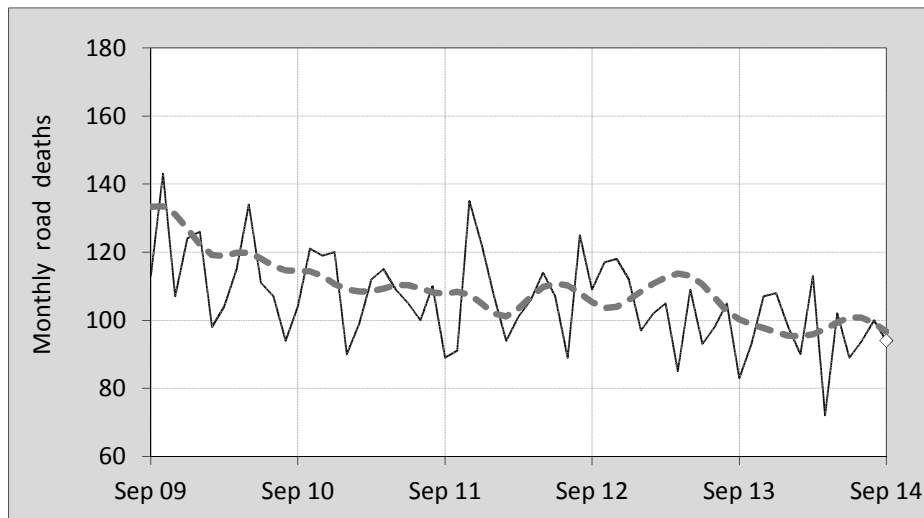




## This month's key figures

- There was a total of 94 road deaths during the month of September 2014. In comparison to the average for September over the previous five years, the current figure is 5.6 per cent lower.
- During the 12 months ended September there were 1,160 road deaths. This is a 5.2 per cent reduction compared to the total for the 12-monthly period ended September 2013.
- Presently the rate of annual deaths per 100,000 population stands at 5.0. Compared to the figure for the 12-monthly period ending September 2013, this is a 6.8 per cent reduction.

## Monthly Australian road deaths — last five years, with trend



### Data Sources

Data are obtained from

- Transport for NSW
- Vicroads
- Department of Transport and Main Roads, Queensland
- Department of Planning, Transport and Infrastructure, S.A.
- Western Australia Police
- Department of State Growth, Tasmania
- Department of Transport, Northern Territory
- Territory and Municipal Services Directorate, ACT
- Australian Bureau of Statistics (3101.0)

### Inquiries

For further information about data in this bulletin, contact:

Bureau of Infrastructure, Transport and  
Regional Economics  
Web : [www.bitre.gov.au](http://www.bitre.gov.au)  
Email : [roadsafety@infrastructure.gov.au](mailto:roadsafety@infrastructure.gov.au)

Road deaths from recent months are preliminary and subject to revision.

© Copyright. Commonwealth of Australia

## I. Deaths by jurisdiction

**Table I.1** Current month

Current month	NSW	Vic	Qld	SA	WA	Tas	NT	ACT	Australia
September 2013	15	19	25	3	13	3	4	1	83
September 2014	23	20	21	9	15	2	2	2	94
Per cent change	53.3	5.3	-16.0	200.0	15.4	-33.3	-50.0	-	13.3

**Table I.2** Year to date

Year to date	NSW	Vic	Qld	SA	WA	Tas	NT	ACT	Australia
January 2013 - September 2013	233	175	215	77	122	21	28	6	877
January 2014 - September 2014	237	188	170	69	129	25	26	8	852
Per cent change	1.7	7.4	-20.9	-10.4	5.7	19.0	-7.1	33.3	-2.9

**Table I.3** Year ending September

12 months ended September	NSW	Vic	Qld	SA	WA	Tas	NT	ACT	Australia
2010	414	295	245	110	203	34	46	20	1,367
2011	364	284	262	115	190	26	41	7	1,289
2012	380	277	284	90	178	29	54	8	1,300
2013	324	259	285	101	176	29	40	10	1,224
2014	336	255	226	90	169	40	35	9	1,160
Latest per cent change	3.7	-1.5	-20.7	-10.9	-4.0	37.9	-12.5	-10.0	-5.2
Average trend change per year (per cent)	-5.2	-3.8	-0.8	-5.2	-4.3	4.4	-5.6	-11.7	-3.7

## 2. Deaths by road user, age-group and gender

**Table 2.1** By road user

12 months ended September	Driver	Passenger	Pedestrian	Motorcyclist <sup>b</sup>	Pedal <sup>b</sup> cyclist	Total <sup>c</sup>
2010	654	290	170	214	38	1,367
2011	579	275	191	206	37	1,289
2012	598	266	173	229	33	1,300
2013	598	230	149	203	36	1,224
2014	530	223	157	190	55	1,160
Latest per cent change	-11.4	-3.0	5.4	-6.4	52.8	-5.2
Average trend change per year (per cent)	-3.8	-6.8	-4.0	-2.5	7.4	-3.7

**Table 2.2** By age-group<sup>a</sup> (years)

12 months ended September	0 to 16	17 to 25	26 to 39	40 to 64	65 to 74	≥ 75	Total <sup>c</sup>
2010	85	314	320	430	101	116	1,367
2011	81	300	271	407	87	143	1,289
2012	80	274	308	392	94	151	1,300
2013	70	263	266	372	102	151	1,224
2014	61	218	228	386	122	143	1,160
Latest per cent change	-12.9	-17.1	-14.3	3.8	19.6	-5.3	-5.2
Average trend change per year (per cent)	-7.8	-6.7	-6.7	-3.0	5.5	4.8	-3.7

## 2. Deaths by road user, age-group and gender (continued)

**Table 2.3** By gender

<b>12 months ended September</b>	<i>Males</i>	<i>Females</i>	<i>Total<sup>d</sup></i>
2010	986	379	1,367
2011	928	359	1,289
2012	927	373	1,300
2013	873	350	1,224
2014	843	316	1,160
<i>Latest per cent change</i>	-3.4	-9.7	-5.2
<i>Average trend change per year (per cent)</i>	-3.7	-3.8	-3.7

a Age groups were changed in March 2014.

b Includes pillion passengers

c Includes deaths to persons with age not recorded.

d Includes deaths to persons with gender not recorded.

## 3. Annual deaths per 100,000 population

**Table 3.1** Year ended September

<b>12 months ended September</b>	<i>NSW</i>	<i>Vic</i>	<i>Qld</i>	<i>SA</i>	<i>WA</i>	<i>Tas</i>	<i>NT</i>	<i>ACT</i>	<i>Australia</i>
2010	5.81	5.42	5.58	6.77	8.91	6.69	20.12	5.55	6.22
2011	5.05	5.14	5.88	7.03	8.13	5.09	17.81	1.91	5.79
2012	5.21	4.94	6.25	5.45	7.37	5.66	23.10	2.14	5.74
2013	4.39	4.53	6.15	6.06	7.03	5.65	16.65	2.63	5.31
2014	4.48	4.38	4.80	5.35	6.59	7.77	14.36	2.33	4.95
<i>Latest per cent change</i>	2.1	-3.4	-22.0	-11.7	-6.4	37.5	-13.7	-11.3	-6.8
<i>Average trend change per year (per cent)</i>	-6.4	-5.4	-2.5	-6.0	-7.2	4.1	-7.1	-13.2	-5.3

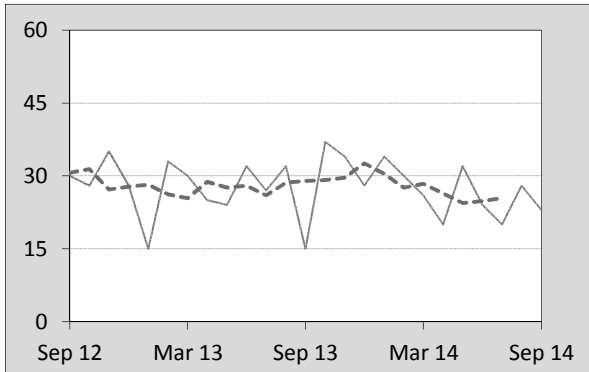
**Table 3.2** Calendar year period

<b>Calendar year</b>	<i>NSW</i>	<i>Vic</i>	<i>Qld</i>	<i>SA</i>	<i>WA</i>	<i>Tas</i>	<i>NT</i>	<i>ACT</i>	<i>Australia</i>
2009	6.44	5.40	7.65	7.40	8.53	12.49	13.72	3.38	6.87
2010	5.67	5.27	5.65	7.25	8.42	6.09	21.76	5.25	6.14
2011	5.04	5.18	6.01	6.28	7.61	4.69	19.46	1.63	5.72
2012	5.05	5.01	6.13	5.68	7.47	6.05	20.77	3.20	5.72
2013	4.48	4.22	5.82	5.87	6.43	7.02	15.29	1.84	5.12
<i>Latest per cent change</i>	-11.3	-15.7	-5.0	3.3	-13.9	15.9	-26.4	-42.6	-10.4

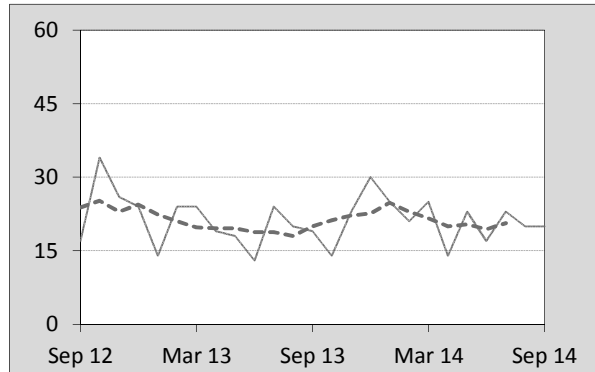
#### 4. Monthly deaths by jurisdiction — last 24 months

— raw  
 - - - smoothed  
 (unweighted 5-point moving average)

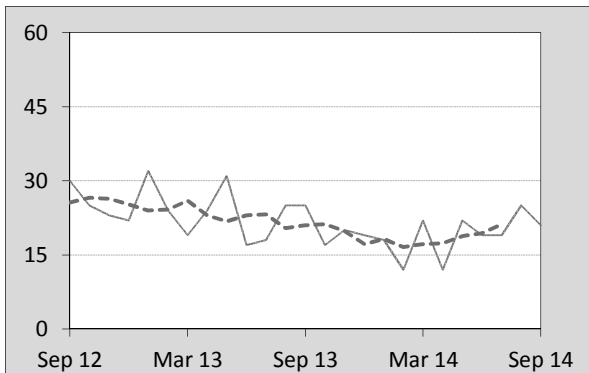
**Figure 4.1 NSW**



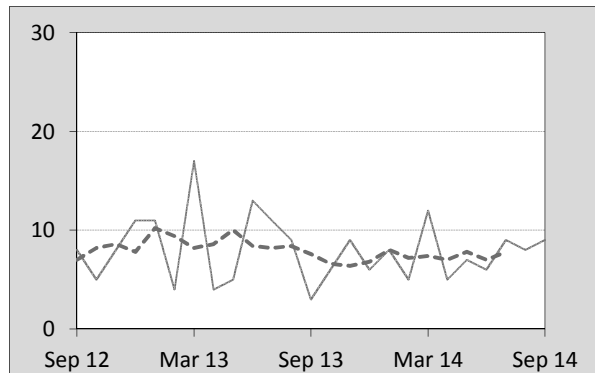
**Figure 4.2 Vic**



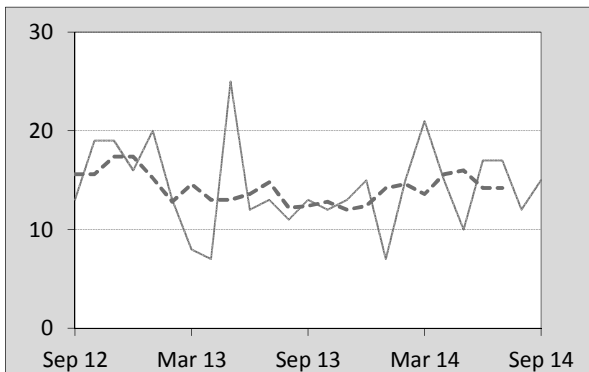
**Figure 4.3 Qld**



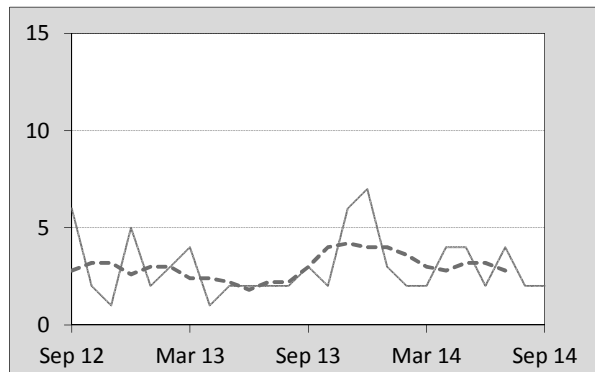
**Figure 4.4 SA**



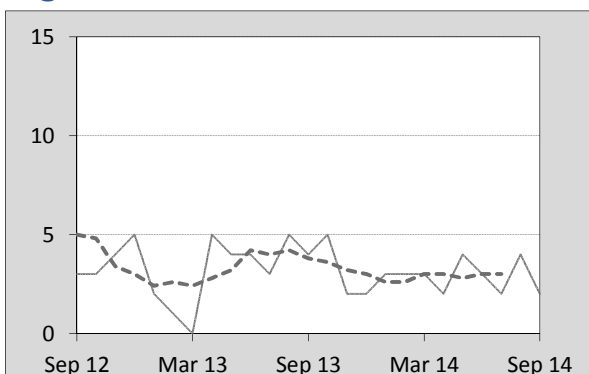
**Figure 4.5 WA**



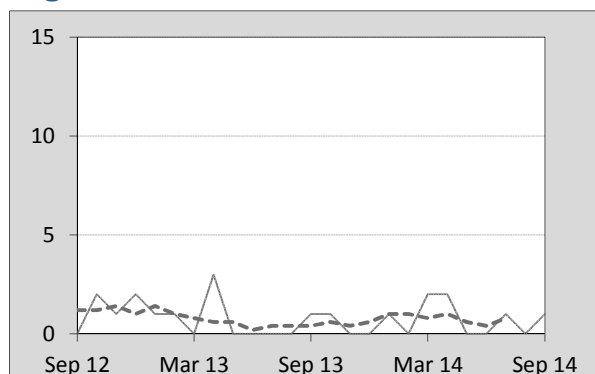
**Figure 4.6 Tas**



**Figure 4.7 NT**



**Figure 4.8 ACT**



## 5. Fatal crashes: counts and characteristics

**Table 5.1** By Crash type and Posted speed limit

12 months ended September	Crash type <sup>a</sup>			Posted speed limit				Total <sup>b</sup>
	Single	Multiple	Pedestrian	0 to 60	70 to 90	100	≥ 110	
2010	560	525	167	366	274	429	176	1,252
2011	512	477	188	347	259	408	153	1,177
2012	515	498	170	399	266	365	140	1,183
2013	528	443	148	358	254	359	138	1,119
2014	480	431	155	314	240	354	124	1,066
Latest per cent change	-9.1	-2.7	4.7	-12.3	-5.5	-1.4	-10.1	-4.7
Average trend change per year (per cent)	-2.7	-4.6	-3.8	-2.7	-2.8	-5.0	-7.7	-3.7

**Table 5.2** By Day of week and Time of day

12 months ended September	Day of week <sup>c</sup>		Time of Day <sup>d</sup>	
	Weekday	Weekend	Day	Night
2010	732	520	729	523
2011	707	470	711	466
2012	705	478	742	441
2013	685	434	704	415
2014	658	408	677	389
Latest per cent change	-3.9	-6.0	-3.8	-6.3
Average trend change per year (per cent)	-2.4	-5.5	-1.6	-6.8

- a 'Single' and 'Multiple' refer to the number of vehicles involved in a fatal crash where there is no pedestrian killed.  
 b Includes crashes where speed limit is unknown  
 c 'Weekday' refers to 6am Monday through to 5:59pm Friday.  
 d 'Day' refers to 6am through to 5:59 pm.

## Appendix

### Definition

The road safety agencies in each jurisdiction use detailed criteria to define road crashes and road deaths. Briefly, a death is classified as resulting from a road crash if the crash occurred on a public road, is unintentional and the death occurred within 30 days from injuries sustained in the crash.

### Population rates

Rates per population are based on the deaths to the current 12 monthly period, and the population at the midpoint of the period. The population at midpoints are interpolated if necessary.

### Average trend change ( % per year )

Calculated by fitting an exponential curve through the five data points, and quoting the constant (annual) change of this curve.

### Other sources for the tables in this bulletin

The underlying database used to produce this bulletin — *the Australian Road Deaths Database* is available for data extraction at <[http://www.bitre.gov.au/statistics/safety/fatal\\_road\\_crash\\_database.aspx](http://www.bitre.gov.au/statistics/safety/fatal_road_crash_database.aspx)>.

Road deaths from recent months are preliminary and subject to revision.