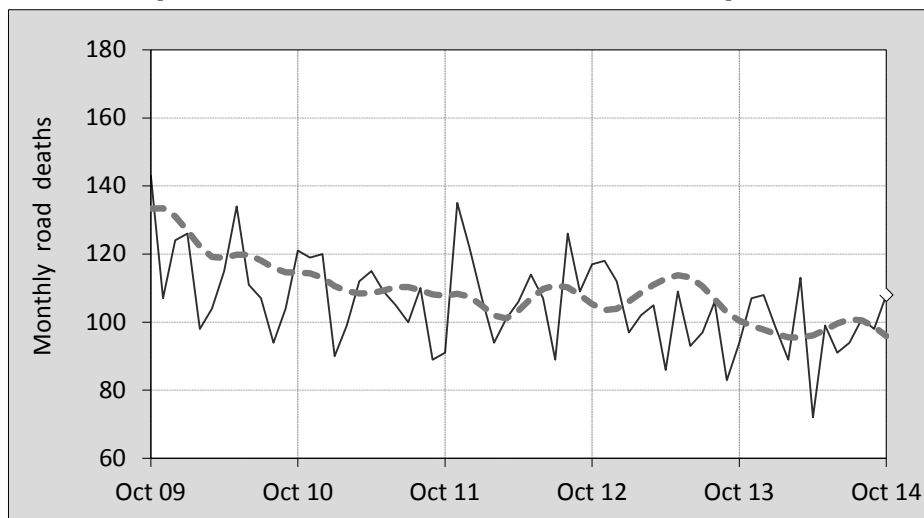




This month's key figures

- There was a total of 108 road deaths during the month of October 2014. In comparison to the average for October over the previous five years, the current figure is 4.6 per cent lower.
- During the 12 months ended October there were 1,178 road deaths. This is a 2.0 per cent reduction compared to the total for the 12-monthly period ended October 2013.
- Presently the rate of annual deaths per 100,000 population stands at 5.0. Compared to the figure for the 12-monthly period ending October 2013, this is a 3.6 per cent reduction.

Monthly Australian road deaths — last five years, with trend



Data Sources

Data are obtained from

- Transport for NSW
- Vicroads
- Department of Transport and Main Roads, Queensland
- Department of Planning, Transport and Infrastructure, S.A.
- Western Australia Police
- Department of State Growth, Tasmania
- Department of Transport, Northern Territory
- Territory and Municipal Services Directorate, ACT
- Australian Bureau of Statistics (3101.0)

Inquiries

For further information about data in this bulletin, contact:

Bureau of Infrastructure, Transport and
Regional Economics
Web : www.bitre.gov.au
Email : roadsafety@infrastructure.gov.au

Road deaths from recent months are preliminary and subject to revision.

© Copyright. Commonwealth of Australia

I. Deaths by jurisdiction

Table I.1 Current month

Current month	NSW	Vic	Qld	SA	WA	Tas	NT	ACT	Australia
October 2013	37	15	17	6	12	2	5	0	94
October 2014	30	20	19	9	22	3	5	0	108
Per cent change	-18.9	33.3	11.8	50.0	83.3	50.0	0.0	-	14.9

Table I.2 Year to date

Year to date	NSW	Vic	Qld	SA	WA	Tas	NT	ACT	Australia
January 2013 - October 2013	271	190	232	83	134	23	33	6	972
January 2014 - October 2014	268	208	189	78	152	29	31	8	963
Per cent change	-1.1	9.5	-18.5	-6.0	13.4	26.1	-6.1	33.3	-0.9

Table I.3 Year ending October

12 months ended October	NSW	Vic	Qld	SA	WA	Tas	NT	ACT	Australia
2010	408	303	240	115	183	33	45	18	1,345
2011	348	270	261	110	195	26	42	7	1,259
2012	385	289	293	88	181	30	52	9	1,327
2013	334	240	277	102	169	29	42	9	1,202
2014	330	261	228	93	180	42	35	9	1,178
Latest per cent change	-1.2	8.8	-17.7	-8.8	6.5	44.8	-16.7	0.0	-2.0
Average trend change per year (per cent)	-4.5	-4.1	-0.4	-4.9	-1.7	6.1	-4.9	-10.7	-3.1

2. Deaths by road user, age-group and gender

Table 2.1 By road user

12 months ended October	Driver	Passenger	Pedestrian	Motorcyclist ^b	Pedal ^b cyclist	Total ^c
2010	636	293	167	212	36	1,345
2011	571	269	182	201	35	1,259
2012	617	271	175	228	35	1,327
2013	572	217	155	206	42	1,202
2014	543	232	155	194	50	1,178
Latest per cent change	-5.1	6.9	0.0	-5.8	19.0	-2.0
Average trend change per year (per cent)	-3.1	-6.6	-3.0	-1.5	8.8	-3.1

Table 2.2 By age-group^a (years)

12 months ended October	0 to 16	17 to 25	26 to 39	40 to 64	65 to 74	≥ 75	Total ^c
2010	79	324	311	411	97	122	1,345
2011	86	285	267	397	84	140	1,259
2012	78	277	318	402	95	156	1,327
2013	67	253	250	369	108	155	1,202
2014	68	228	244	383	116	137	1,178
Latest per cent change	1.5	-9.9	-2.4	3.8	7.4	-11.6	-2.0
Average trend change per year (per cent)	-5.3	-7.9	-5.4	-2.1	6.3	3.4	-3.1

2. Deaths by road user, age-group and gender (continued)

Table 2.3 By gender

12 months ended October	<i>Males</i>	<i>Females</i>	<i>Total^d</i>
2010	966	377	1,345
2011	909	348	1,259
2012	948	379	1,327
2013	860	341	1,202
2014	846	329	1,178
<i>Latest per cent change</i>	-1.6	-3.5	-2.0
<i>Average trend change per year (per cent)</i>	-3.2	-2.9	-3.1

a Age groups were changed in March 2014.

b Includes pillion passengers

c Includes deaths to persons with either age or road ruser type not recorded.

d Includes deaths to persons with gender not recorded.

3. Annual deaths per 100,000 population

Table 3.1 Year ended October

12 months ended October	<i>NSW</i>	<i>Vic</i>	<i>Qld</i>	<i>SA</i>	<i>WA</i>	<i>Tas</i>	<i>NT</i>	<i>ACT</i>	<i>Australia</i>
2010	5.72	5.56	5.46	7.08	8.02	6.49	19.65	4.99	6.12
2011	4.83	4.89	5.85	6.72	8.32	5.08	18.21	1.91	5.65
2012	5.28	5.14	6.44	5.32	7.43	5.86	22.18	2.41	5.85
2013	4.52	4.20	5.97	6.11	6.74	5.65	17.44	2.37	5.21
2014	4.39	4.48	4.84	5.52	7.00	8.16	14.35	2.33	5.02
<i>Latest per cent change</i>	-2.8	6.7	-19.0	-9.7	3.9	44.3	-17.7	-1.4	-3.6
<i>Average trend change per year (per cent)</i>	-5.8	-5.7	-2.2	-5.7	-4.7	5.8	-6.5	-12.2	-4.6

Table 3.2 Calendar year period

Calendar year	<i>NSW</i>	<i>Vic</i>	<i>Qld</i>	<i>SA</i>	<i>WA</i>	<i>Tas</i>	<i>NT</i>	<i>ACT</i>	<i>Australia</i>
2009	6.44	5.40	7.65	7.40	8.53	12.49	13.72	3.38	6.87
2010	5.67	5.27	5.65	7.25	8.42	6.09	21.76	5.25	6.14
2011	5.04	5.18	6.01	6.28	7.61	4.69	19.46	1.63	5.72
2012	5.05	5.01	6.13	5.68	7.47	6.05	20.77	3.20	5.72
2013	4.49	4.24	5.82	5.87	6.43	7.02	15.29	1.84	5.13
<i>Latest per cent change</i>	-11.0	-15.4	-5.0	3.3	-13.9	15.9	-26.4	-42.6	-10.2

4. Monthly deaths by jurisdiction — last 24 months

— raw
 - - - smoothed
 (unweighted 5-point moving average)

Figure 4.1 NSW

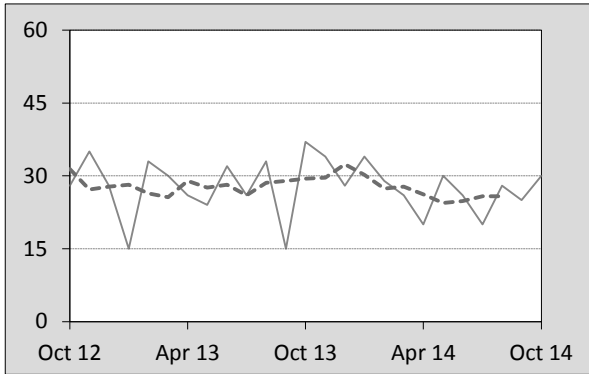


Figure 4.2 Vic

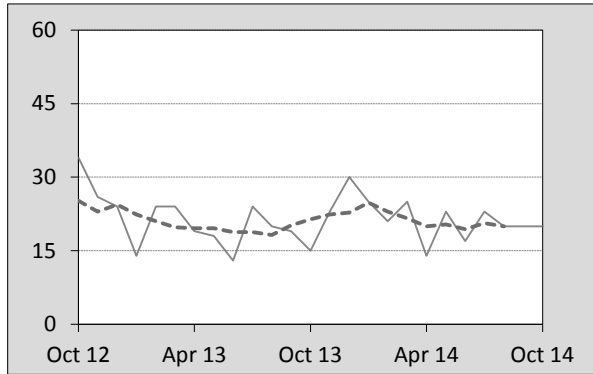


Figure 4.3 Qld

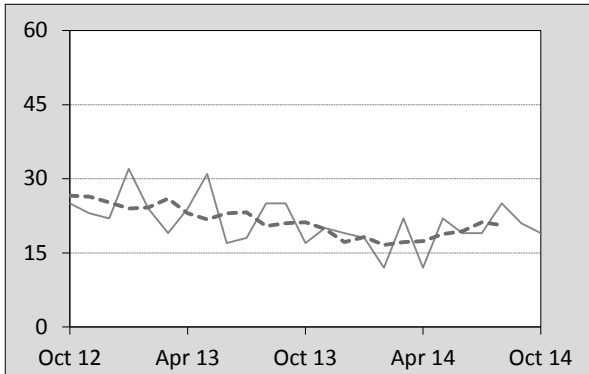


Figure 4.4 SA

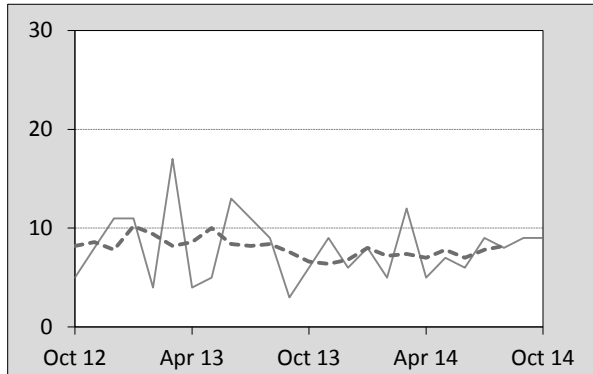


Figure 4.5 WA

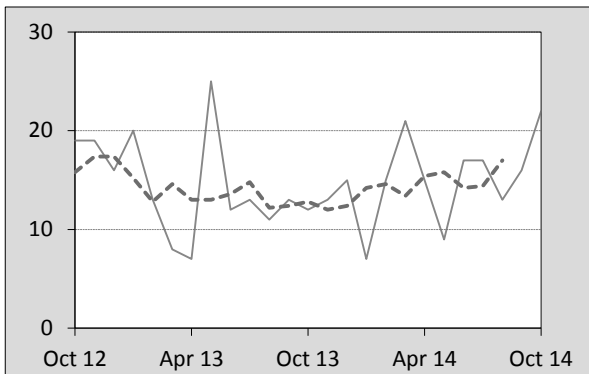


Figure 4.6 Tas

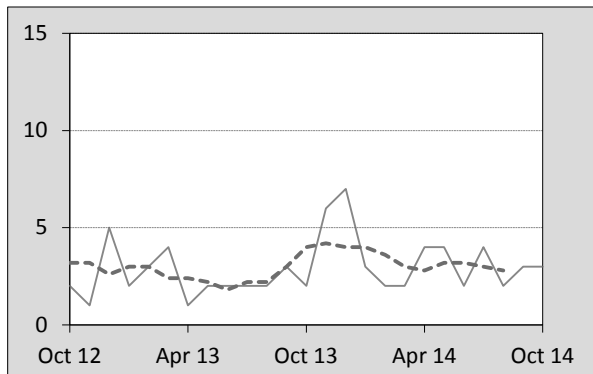


Figure 4.7 NT

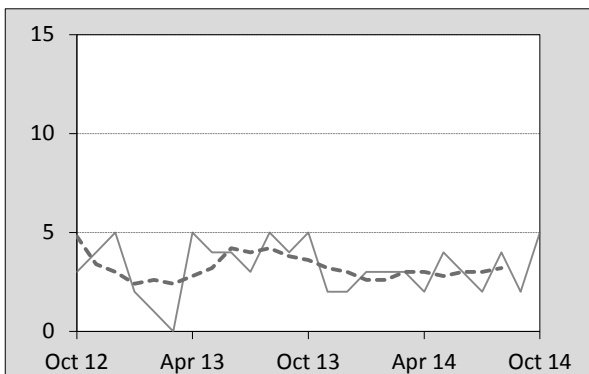
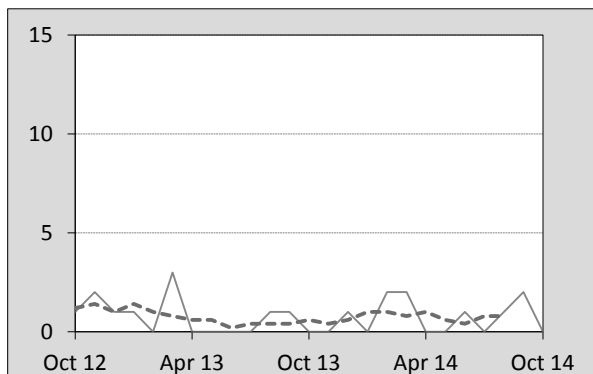


Figure 4.8 ACT



5. Fatal crashes: counts and characteristics

Table 5.1 By Crash type and Posted speed limit

12 months ended October	Crash type ^a			Posted speed limit				Total ^b
	Single	Multiple	Pedestrian	0 to 60	70 to 90	100	≥ 110	
2010	552	512	165	360	272	427	163	1,229
2011	504	465	180	339	252	391	157	1,149
2012	525	513	172	406	274	374	141	1,210
2013	517	431	153	355	254	353	132	1,101
2014	496	432	154	323	235	363	130	1,082
Latest per cent change	-4.1	0.2	0.7	-9.0	-7.5	2.8	-1.5	-1.7
Average trend change per year (per cent)	-1.9	-4.1	-3.0	-1.7	-2.8	-4.2	-6.1	-2.9

Table 5.2 By Day of week and Time of day

12 months ended October	Day of week ^c		Time of Day ^d	
	Weekday	Weekend	Day	Night
2010	700	529	714	515
2011	690	459	701	448
2012	742	468	755	455
2013	661	440	696	405
2014	672	410	687	395
Latest per cent change	1.7	-6.8	-1.3	-2.5
Average trend change per year (per cent)	-1.2	-5.4	-0.8	-6.1

a 'Single' and 'Multiple' refer to the number of vehicles involved in a fatal crash where there is no pedestrian killed.

b Includes crashes where speed limit is unknown

c 'Weekday' refers to 6am Monday through to 5:59pm Friday.

d 'Day' refers to 6am through to 5:59 pm.

Appendix

Definition

The road safety agencies in each jurisdiction use detailed criteria to define road crashes and road deaths. Briefly, a death is classified as resulting from a road crash if the crash occurred on a public road, is unintentional and the death occurred within 30 days from injuries sustained in the crash.

Population rates

Rates per population are based on the deaths to the current 12 monthly period, and the population at the midpoint of the period. The population at midpoints are interpolated if necessary.

Average trend change (% per year)

Calculated by fitting an exponential curve through the five data points, and quoting the constant (annual) change of this curve.

Other sources for the tables in this bulletin

The underlying database used to produce this bulletin — *the Australian Road Deaths Database* is available for data extraction at <http://www.bitre.gov.au/statistics/safety/fatal_road_crash_database.aspx>.

Road deaths from recent months are preliminary and subject to revision.