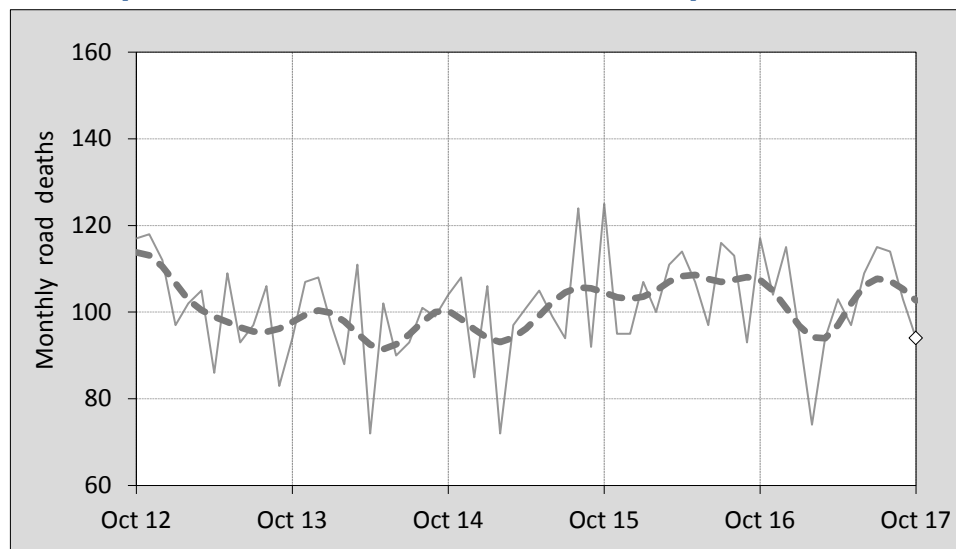




This month's key figures

- There was a total of **94** road deaths during the month of October 2017. In comparison to the average for October over the previous five years, the current figure is 15.6 per cent lower.
- During the 12 months ended October 2017, there were 1,217 road deaths. This is a 3.8 per cent decrease compared to the total for the 12-month period ended October 2016.
- Presently, the rate of annual deaths per 100,000 population stands at 5.0. Compared to the figure for the 12-month period ending October 2016, this is a 5.4 per cent decrease.

Monthly Australian road deaths — last five years, with trend



Data Sources

Data are obtained from

- Transport for NSW
- Vicroads
- Department of Transport and Main Roads, Queensland
- Department of Planning, Transport and Infrastructure, S.A.
- Western Australia Police
- Department of State Growth, Tasmania
- Department of Transport, Northern Territory
- Transport Canberra and City Services Directorate, ACT
- Australian Bureau of Statistics (3101.0)

Inquiries

For further information about data in this bulletin, contact:

Bureau of Infrastructure, Transport and Regional Economics

Web : www.bitre.gov.au

Email : roadsafety@infrastructure.gov.au

Road deaths from recent months are preliminary and subject to revision.

See www.roadsafety.gov.au for performance indicators used to monitor progress under the National Road Safety Strategy 2011-2020 (NRSS).

© Copyright. Commonwealth of Australia

1. Deaths by jurisdiction

Table 1.1 Current month

Current month	NSW	Vic	Qld	SA	WA	Tas	NT	ACT	Australia
October 2016	31	22	20	10	21	4	7	2	117
October 2017	31	10	22	9	14	4	4	0	94
Per cent change	0.0	-54.5	10.0	-10.0	-33.3	0.0	-42.9	-100.0	-19.7

Table 1.2 Year to date

Year to date	NSW	Vic	Qld	SA	WA	Tas	NT	ACT	Australia
January 2016 - October 2016	327	241	201	70	157	33	36	10	1,075
January 2017 - October 2017	320	194	212	91	123	28	26	4	998
Per cent change	-2.1	-19.5	5.5	30.0	-21.7	-15.2	-27.8	-60.0	-7.2

Table 1.3 Year ending October

12 months ended October	NSW	Vic	Qld	SA	WA	Tas	NT	ACT	Australia
2013	334	240	277	102	169	29	42	9	1,202
2014	322	260	229	95	178	40	39	9	1,172
2015	337	257	239	116	165	37	45	12	1,208
2016	387	277	238	83	185	36	44	15	1,265
2017	373	244	262	107	159	32	35	5	1,217
Latest per cent change	-3.6	-11.9	10.1	28.9	-14.1	-11.1	-20.5	-66.7	-3.8
Average trend change per year (per cent)	4.1	1.0	-0.7	-0.4	-0.8	0.9	-2.4	-6.4	1.0

2. Deaths by road user, age-group and gender

Table 2.1 By road user

12 months ended October	Driver	Passenger	Pedestrian	Motorcyclist ^b	Pedal ^b cyclist	Total ^c
2013	572	219	155	206	42	1,202
2014	539	233	157	191	49	1,172
2015	555	249	159	211	31	1,208
2016	615	204	172	240	31	1,265
2017	575	226	162	213	35	1,217
Latest per cent change	-6.5	10.8	-5.8	-11.3	12.9	-3.8
Average trend change per year (per cent)	1.4	-0.7	1.8	3.0	-7.9	1.0

Table 2.2 By age-group^a (years)

12 months ended October	0 to 16	17 to 25	26 to 39	40 to 64	65 to 74	≥ 75	Total ^c
2013	67	253	250	369	108	155	1,202
2014	64	229	244	380	115	137	1,172
2015	69	237	268	369	117	148	1,208
2016	52	249	280	415	108	161	1,265
2017	58	246	260	366	116	170	1,217
Latest per cent change	11.5	-1.2	-7.1	-11.8	7.4	5.6	-3.8
Average trend change per year (per cent)	-4.8	0.3	2.2	0.7	0.8	3.5	1.0

2. Deaths by road user, age-group and gender (continued)

Table 2.3 By gender

12 months ended October	<i>Males</i>	<i>Females</i>	<i>Total^d</i>
2013	860	341	1,202
2014	844	327	1,172
2015	865	343	1,208
2016	924	341	1,265
2017	891	323	1,217
<i>Latest per cent change</i>	-3.6	-5.3	-3.8
<i>Average trend change per year (per cent)</i>	1.6	-0.7	1.0

a Age groups were changed in March 2014.

b Includes pillion passengers.

c Includes deaths to persons with either age or road user type not recorded.

d Includes deaths to persons with gender not recorded.

3. Annual deaths per 100,000 population

Table 3.1 Year ended October

12 months ended October	<i>NSW</i>	<i>Vic</i>	<i>Qld</i>	<i>SA</i>	<i>WA</i>	<i>Tas</i>	<i>NT</i>	<i>ACT</i>	<i>Australia</i>
2013	4.52	4.17	5.97	6.11	6.80	5.66	17.38	2.35	5.21
2014	4.29	4.42	4.86	5.64	7.06	7.78	16.03	2.31	5.00
2015	4.43	4.27	5.01	6.82	6.49	7.18	18.45	3.03	5.08
2016	5.01	4.50	4.92	4.85	7.23	6.96	17.96	3.73	5.24
2017	4.75	3.87	5.33	6.21	6.17	6.15	14.29	1.22	4.96
<i>Latest per cent change</i>	-5.2	-14.0	8.3	28.1	-14.7	-11.7	-20.4	-67.3	-5.4
<i>Average trend change per year (per cent)</i>	2.6	-1.3	-2.1	-1.2	-1.7	0.5	-2.7	-8.0	-0.5

Table 3.2 Calendar year period

Calendar year	<i>NSW</i>	<i>Vic</i>	<i>Qld</i>	<i>SA</i>	<i>WA</i>	<i>Tas</i>	<i>NT</i>	<i>ACT</i>	<i>Australia</i>
2012	5.05	4.99	6.13	5.67	7.54	6.06	20.77	3.19	5.72
2013	4.49	4.21	5.82	5.86	6.50	7.02	15.24	1.82	5.13
2014	4.08	4.20	4.72	6.34	7.25	6.42	16.01	2.57	4.89
2015	4.59	4.18	5.08	5.99	6.29	6.60	20.00	3.78	5.05
2016	4.91	4.71	5.18	5.02	7.54	7.15	18.31	2.73	5.34
<i>Latest per cent change</i>	7.0	12.7	1.9	-16.2	19.9	8.4	-8.5	-27.9	5.8

4. Monthly deaths by jurisdiction — last 24 months

— raw
 - - - smoothed
 (13-point moving average)

Figure 4.1 NSW

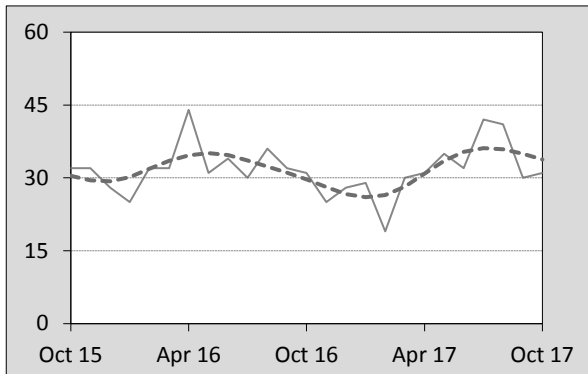


Figure 4.2 Vic

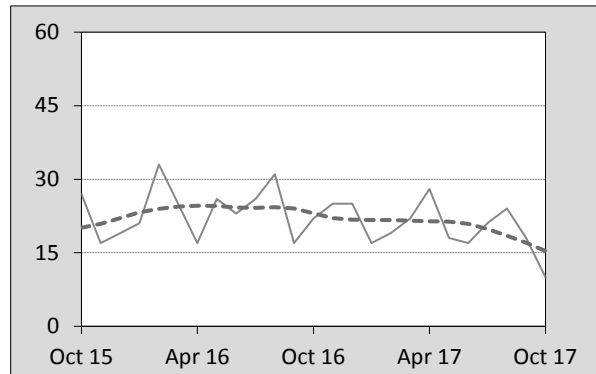


Figure 4.3 Qld

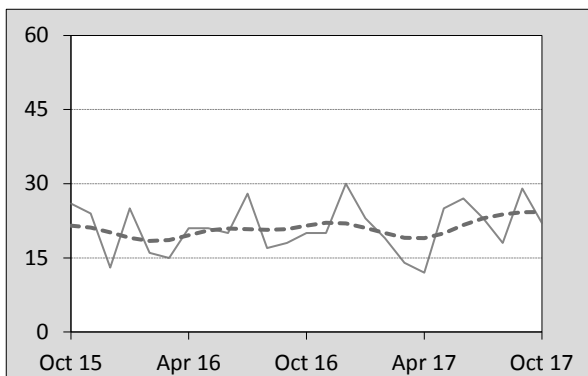


Figure 4.4 SA

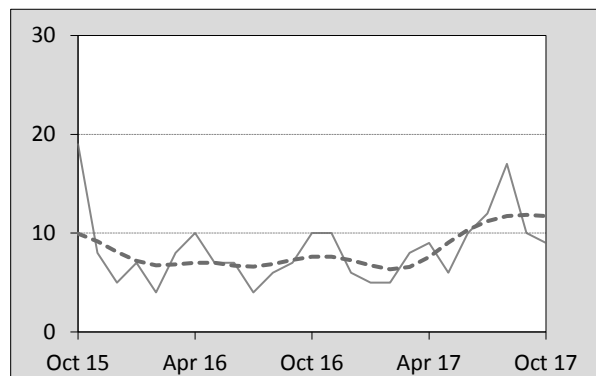


Figure 4.5 WA

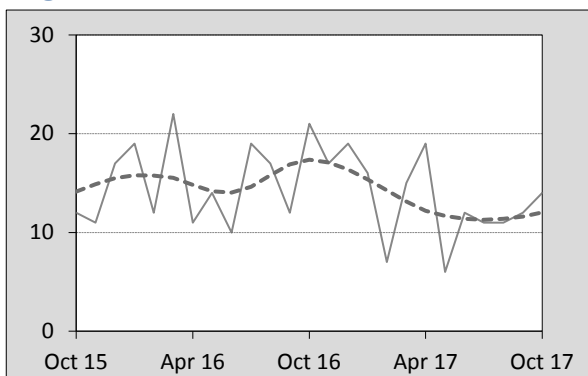


Figure 4.6 Tas

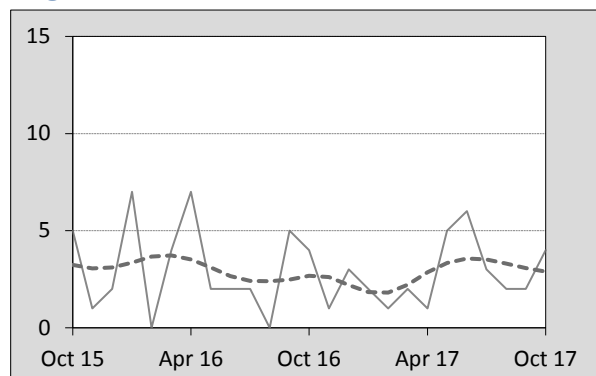


Figure 4.7 NT

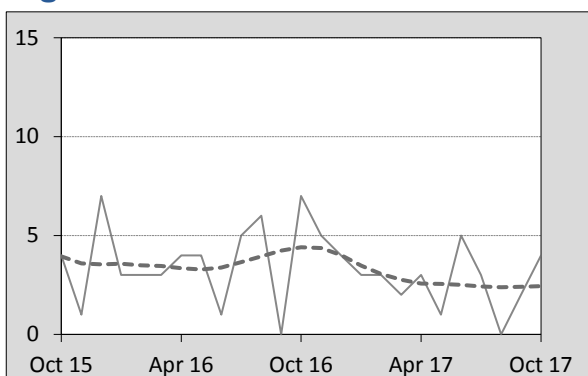
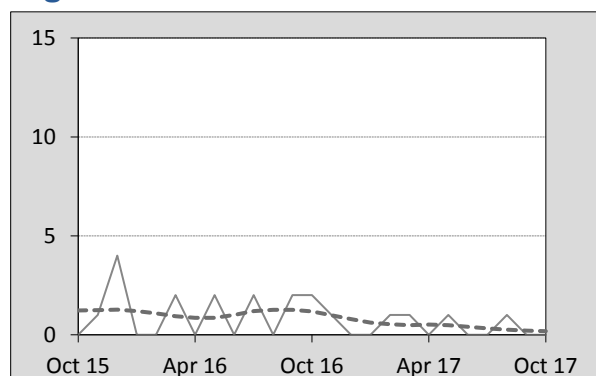


Figure 4.8 ACT



5. Fatal crashes: counts and characteristics

Table 5.1 By Crash type and Posted speed limit

12 months ended October	Crash type ^a			Posted speed limit						Total ^b
	Single	Multiple	Pedestrian	40	50	60	70 to 90	100	≥ 110	
2013	517	431	153	16	127	207	254	353	132	1,101
2014	486	431	156	15	115	190	234	373	128	1,073
2015	488	460	157	13	122	217	252	347	140	1,105
2016	518	491	161	17	124	215	274	365	167	1,170
2017	507	472	150	19	137	201	236	325	144	1,129
Latest per cent change	-2.1	-3.9	-6.8	11.8	10.5	-6.5	-13.9	-11.0	-13.8	-3.5
Average trend change per year (per cent)	0.2	3.2	-0.1	4.8	2.3	0.6	0.1	-1.9	4.5	1.4

Table 5.2 By Day of week and Time of day

12 months ended October	Day of week ^c		Time of Day ^d	
	Weekday	Weekend	Day	Night
2013	661	440	696	405
2014	671	402	681	392
2015	665	440	676	429
2016	717	453	705	465
2017	715	414	721	408
Latest per cent change	-0.3	-8.6	2.3	-12.3
Average trend change per year (per cent)	2.3	0.0	1.1	1.9

a 'Single' and 'Multiple' refer to the number of vehicles involved in a fatal crash where there is no pedestrian killed.

b Includes crashes where speed limit is unknown or where the posted speed limit is 30km/hr or less.

c 'Weekday' refers to 6am Monday through to 5:59pm Friday.

d 'Day' refers to 6am through to 5:59 pm.

Appendix

Definition

The road safety agencies in each jurisdiction use detailed criteria to define road crashes and road deaths. Briefly, a death is classified as resulting from a road crash if the crash occurred on a public road, is unintentional and the death occurred within 30 days from injuries sustained in the crash.

Population rates

Rates per population are based on the deaths to the current 12-month period, and the population at the midpoint of the period. The population at midpoints is interpolated if necessary.

Average trend change (% per year)

Calculated by fitting an exponential curve through the five data points, and quoting the constant (annual) change of this curve.

Other sources for the tables in this bulletin

The underlying database used to produce this bulletin — *the Australian Road Deaths Database* is available for data extraction at <http://www.bitre.gov.au/statistics/safety/fatal_road_crash_database.aspx>.

Road deaths from recent months are preliminary and subject to revision.