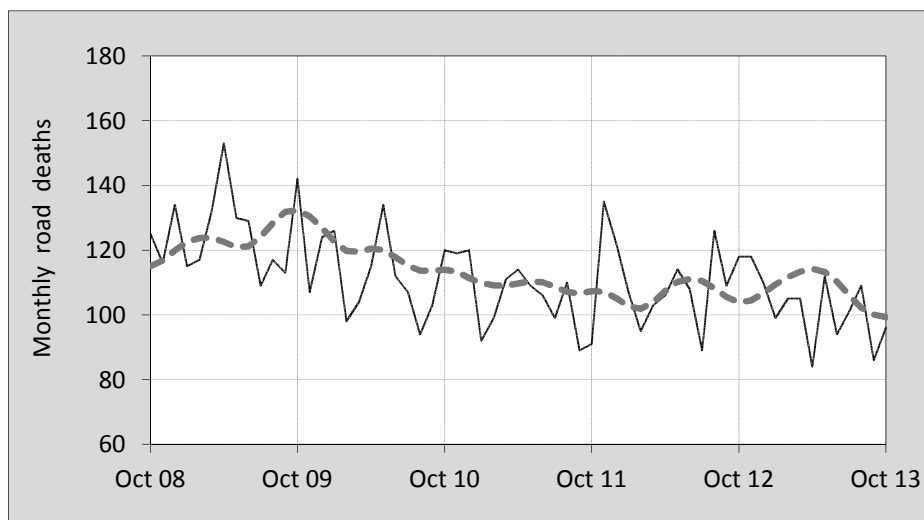




This month's key figures

- There was a total of 96 road deaths in October 2013. In comparison to the average for October over the previous five years, the current figure is 19.5 per cent lower.
- During the 12 months ended October there were 1,219 road deaths. This is a 8.5 per cent decrease over the total for the 12-monthly period ending October 2012.
- Presently the rate of annual deaths per 100,000 population stands at 5.3. Compared to the figure for the 12-monthly period ending October 2012, this is a 10.0 per cent reduction.

Monthly Australian road deaths — last five years, with trend



Data Sources

Data are obtained from

- Transport for NSW
- Vicroads
- Department of Transport and Main Roads, Queensland
- Department for Transport, Energy and Infrastructure, S.A.
- Western Australia Police
- Department of Infrastructure, Energy and Resources, Tasmania
- Department of Lands and Planning, Northern Territory
- Department of Territory and Municipal Services, ACT
- Australian Bureau of Statistics (3101.0)

Inquiries

For further information about data in this bulletin, contact:

Bureau of Infrastructure, Transport and Regional Economics
Web : www.bitre.gov.au
Email : roadsafety@infrastructure.gov.au

Road deaths from recent months are preliminary and subject to revision.

© Copyright. Commonwealth of Australia

I. Current month and year to date

Deaths by jurisdiction

Current month	NSW	Vic	Qld	SA	WA	Tas	NT	ACT	Australia
October 2012	28	34	25	5	19	3	3	1	118
October 2013	40	14	17	6	12	2	5	0	96
Per cent change	42.9	-58.8	-32.0	20.0	-36.8	-33.3	66.7	-	-18.6

Year to date	NSW	Vic	Qld	SA	WA	Tas	NT	ACT	Australia
January 2012 - October 2012	306	232	235	75	152	26	40	9	1,075
January 2013 - October 2013	286	189	232	83	137	25	33	6	991
Per cent change	-6.5	-18.5	-1.3	10.7	-9.9	-3.8	-17.5	-33.3	-7.8

2. Yearly deaths — last five 12 monthly periods

Deaths by jurisdiction

12 months ended October	NSW	Vic	Qld	SA	WA	Tas	NT	ACT	Australia
2009	454	286	343	121	194	61	35	13	1,507
2010	408	303	240	115	183	33	44	18	1,344
2011	348	270	261	110	196	26	41	7	1,259
2012	385	289	293	88	185	31	52	9	1,332
2013	349	239	277	102	170	32	41	9	1,219
Latest per cent change	-9.4	-17.3	-5.5	15.9	-8.1	3.2	-21.2	0.0	-8.5
Average trend change per year (per cent)	-5.7	-4.0	-2.3	-5.9	-2.5	-12.7	5.0	-13.3	-4.2

Deaths by road user

12 months ended October	Driver	Passenger	Pedestrian	Motorcyclist	Cyclist	Total ^a
2009	695	322	216	236	36	1,507
2010	635	294	166	212	36	1,344
2011	572	269	181	201	35	1,259
2012	620	270	178	228	35	1,332
2013	587	216	155	208	43	1,219
Latest per cent change	-5.3	-20.0	-12.9	-8.8	22.9	-8.5
Average trend change per year (per cent)	-3.6	-8.5	-5.8	-1.8	3.3	-4.2

a Includes deaths where road user type is unknown

Deaths by age-group (years)

12 months ended October	<i>0 to 16</i>	<i>17 to 25</i>	<i>26 to 39</i>	<i>40 to 59</i>	<i>60 to 69</i>	<i>≥ 70</i>	<i>Total^b</i>
2009	103	384	363	383	105	169	1,507
2010	79	324	311	358	103	168	1,344
2011	86	285	268	336	106	178	1,259
2012	79	278	319	320	136	199	1,332
2013	68	251	252	309	129	207	1,219
<i>Latest per cent change</i>	-13.9	-9.7	-21.0	-3.4	-5.1	4.0	-8.5
<i>Average trend change per year (per cent)</i>	-8.0	-9.5	-6.8	-5.3	7.1	5.9	-4.2

b Includes deaths to persons with age not recorded.

Deaths by gender

12 months ended October	<i>Males</i>	<i>Females</i>	<i>Total^c</i>
2009	1,103	402	1,507
2010	962	379	1,344
2011	910	347	1,259
2012	952	380	1,332
2013	876	342	1,219
<i>Latest per cent change</i>	-8.0	-10.0	-8.5
<i>Average trend change per year (per cent)</i>	-4.6	-3.2	-4.2

c Includes deaths to persons with gender not recorded.

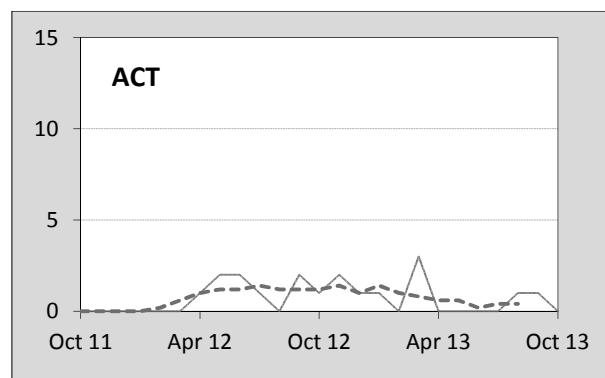
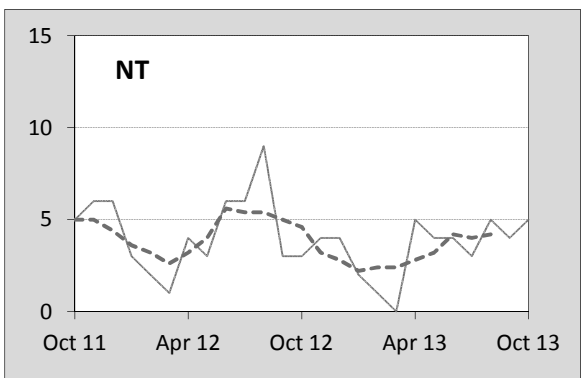
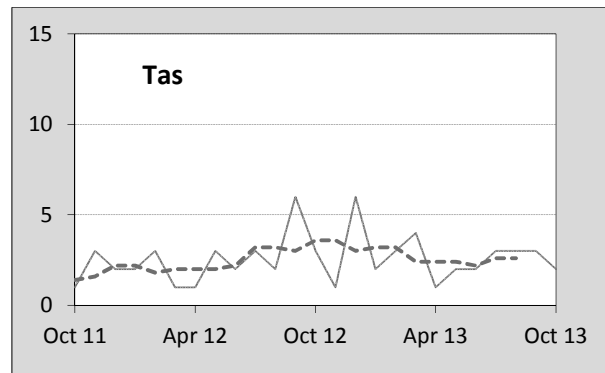
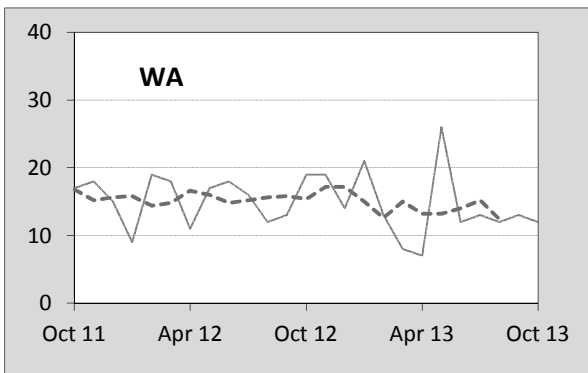
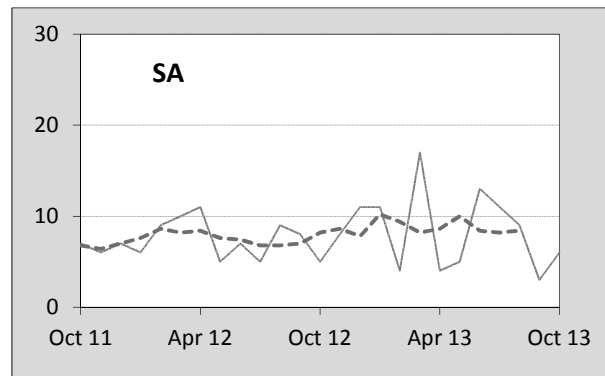
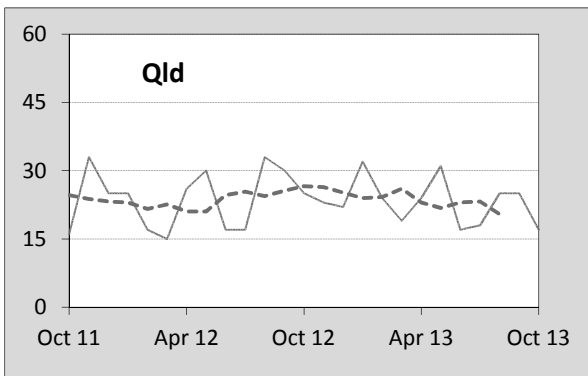
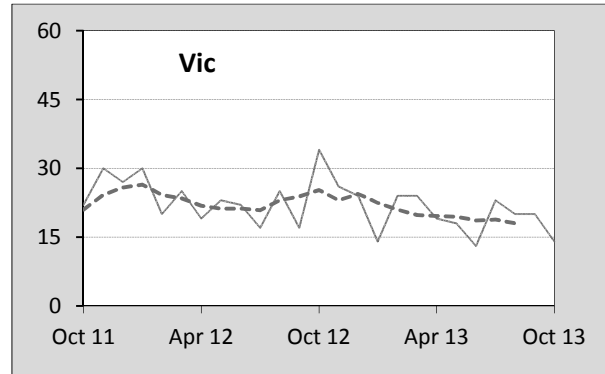
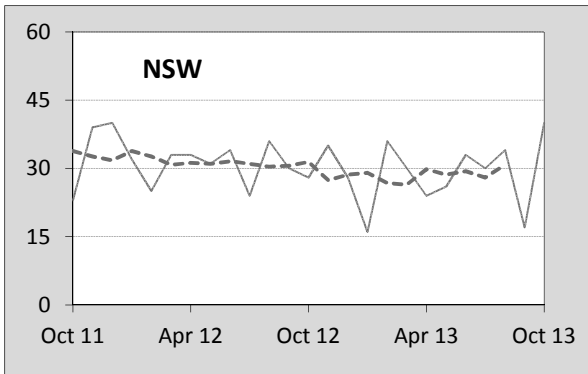
3. Annual deaths per 100,000 population

By jurisdiction

12 months ended October	<i>NSW</i>	<i>Vic</i>	<i>Qld</i>	<i>SA</i>	<i>WA</i>	<i>Tas</i>	<i>NT</i>	<i>ACT</i>	<i>Australia</i>
2009	6.45	5.34	7.96	7.54	8.70	12.12	15.57	3.68	6.97
2010	5.72	5.56	5.46	7.08	8.02	6.50	19.20	4.99	6.12
2011	4.83	4.89	5.85	6.72	8.37	5.08	17.78	1.91	5.65
2012	5.28	5.14	6.43	5.32	7.64	6.05	22.20	2.41	5.88
2013	4.73	4.18	5.97	6.11	6.80	6.23	17.17	2.35	5.29
<i>Latest per cent change</i>	-10.4	-18.7	-7.2	14.9	-10.9	2.9	-22.7	-2.3	-10.0
<i>Average trend change per year (per cent)</i>	-6.8	-5.5	-4.0	-6.8	-5.3	-13.1	3.5	-15.0	-5.7
Calendar year	<i>NSW</i>	<i>Vic</i>	<i>Qld</i>	<i>SA</i>	<i>WA</i>	<i>Tas</i>	<i>NT</i>	<i>ACT</i>	<i>Australia</i>
2008	5.39	5.76	7.77	6.23	9.44	7.82	34.11	4.02	6.76
2009	6.42	5.40	7.65	7.40	8.48	12.49	13.27	3.38	6.86
2010	5.67	5.27	5.65	7.25	8.42	6.09	21.32	5.25	6.14
2011	5.04	5.18	6.01	6.28	7.65	4.69	19.02	1.63	5.72
2012	5.05	5.01	6.13	5.67	7.60	6.44	20.41	3.20	5.73
<i>Latest per cent change</i>	0.2	-3.4	2.0	-9.7	-0.7	37.3	7.3	96.2	0.3

4. Monthly deaths by jurisdiction — last 24 months

— raw
 - - - smoothed (unweighted 5-point moving average)



5. Fatal crashes: counts and characteristics

12 months ended October	Crash type ^d			Posted speed limit				Total ^e
	Single	Multiple	Pedestrian	0 to 60	70 to 90	100	≥ 110	
2009	649	508	210	433	313	426	172	1,367
2010	555	510	164	348	269	427	159	1,229
2011	506	464	179	336	251	387	156	1,149
2012	527	513	175	408	272	375	143	1,215
2013	534	430	152	352	261	344	133	1,116
<i>Average trend change per year (per cent)</i>	-4.3	-3.2	-5.6	-2.5	-3.5	-5.4	-6.0	-4.1

12 months ended October	Day of week ^f		Time of Day ^g	
	Weekday	Weekend	Day	Night
2009	853	514	781	586
2010	701	528	716	513
2011	689	460	704	445
2012	747	468	759	456
2013	673	443	711	405
<i>Average trend change per year (per cent)</i>	-4.0	-4.1	-1.3	-8.2

d 'Single' and 'Multiple' refer to the number of vehicles involved in a fatal crash where there is no pedestrian killed.

e Includes crashes where speed limit is unknown

f 'Weekday' refers to 6am Monday through to 5:59pm Friday.

g 'Day' refers to 6am through to 5:59 pm.

Appendix

Definition

The road safety agencies in each jurisdiction use detailed criteria to define road crashes and road deaths. Briefly, a death is classified as resulting from a road crash if the crash occurred on a public road, is unintentional and the death occurred within 30 days from injuries sustained in the crash.

Population rates

Rates per population are based on the deaths to the current 12 monthly period, and the population at the midpoint of the period. The population at midpoints are interpolated if necessary.

Average trend change (% per year)

Calculated by fitting an exponential curve through the five data points, and quoting the constant (annual) change of this curve.

Other sources for the tables in this bulletin

The underlying database used to produce this bulletin — the Australian Road Deaths Database is available for online querying and data extraction at

< http://www.bitre.gov.au/statistics/safety/fatal_road_crash_database.aspx >

Road deaths from recent months are preliminary and subject to revision.

6. Supplementary data — Vulnerable road user groups

In this month's supplementary tables, analysis of the vulnerable road user groups Pedestrians, Motorcyclists and Pedal cyclists are analysed.

Shown in the figures are the annual deaths for selected age groups.

Figure 1 Annual pedestrian deaths by age group

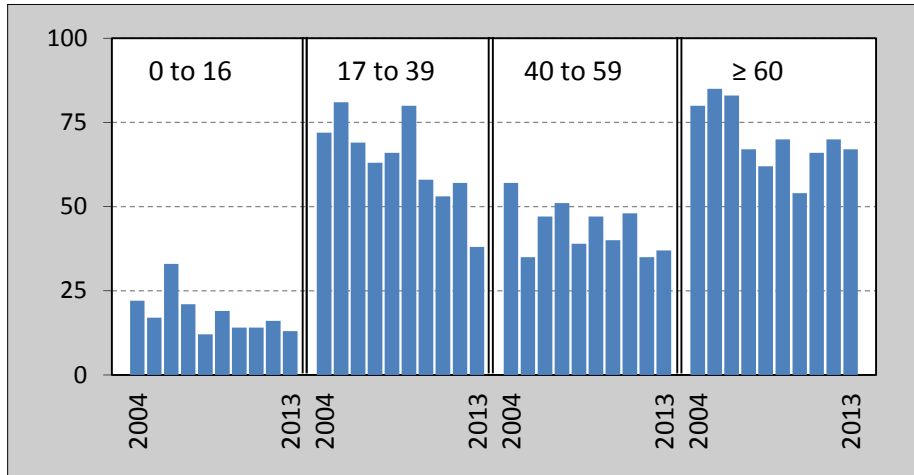


Figure 2 Annual pedal cyclist deaths by age group

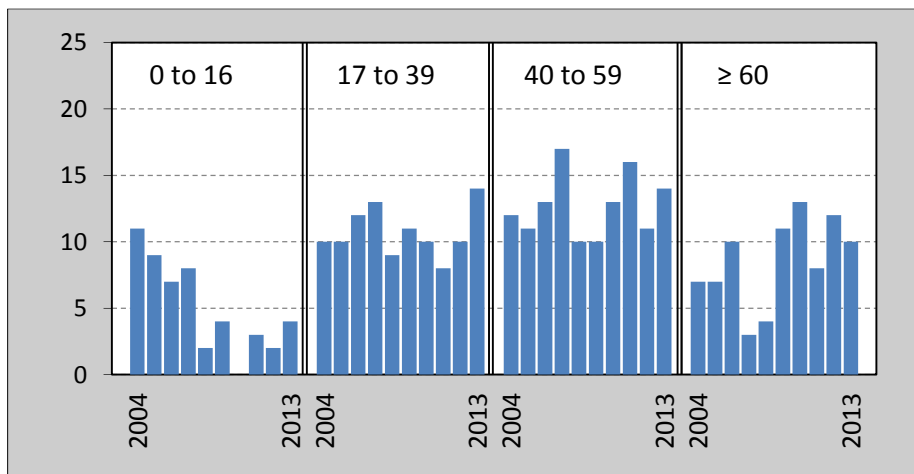


Figure 3 Annual motorcyclist deaths by age group

