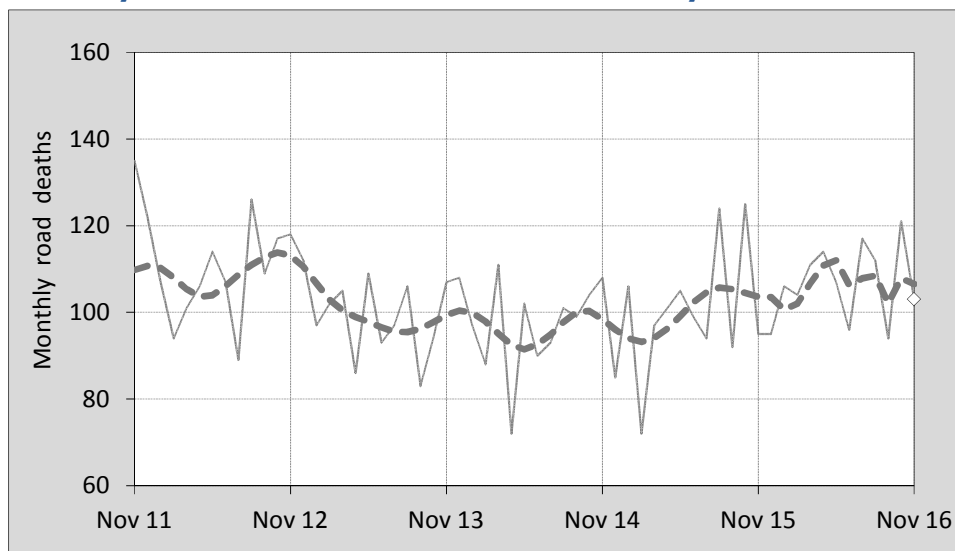




## This month's key figures

- There was a total of 103 road deaths during the month of November 2016. In comparison to the average for November over the previous five years, the current figure is 8.5 per cent lower.
- During the 12 months ended November, there were 1,280 road deaths. This is a 7.1 per cent increase compared to the total for the 12-month period ended November 2015.
- Presently, the rate of annual deaths per 100,000 population stands at 5.3. Compared to the figure for the 12-month period ending November 2015, this is a 5.6 per cent increase.

## Monthly Australian road deaths — last five years, with trend



### Data Sources

Data are obtained from

- Transport for NSW
- Vicroads
- Department of Transport and Main Roads, Queensland
- Department of Planning, Transport and Infrastructure, S.A.
- Western Australia Police
- Department of State Growth, Tasmania
- Department of Transport, Northern Territory
- Territory and Municipal Services Directorate, ACT
- Australian Bureau of Statistics (3101.0)

### Inquiries

For further information about data in this bulletin, contact:

Bureau of Infrastructure, Transport and Regional Economics  
 Web : [www.bitre.gov.au](http://www.bitre.gov.au)  
 Email : [roadsafety@infrastructure.gov.au](mailto:roadsafety@infrastructure.gov.au)

Road deaths from recent months are preliminary and subject to revision.

© Copyright. Commonwealth of Australia

## 1. Deaths by jurisdiction

**Table 1.1** Current month

Current month	NSW	Vic	Qld	SA	WA	Tas	NT	ACT	Australia
November 2015	32	17	24	8	11	1	1	1	95
November 2016	24	23	21	12	16	1	5	1	103
Per cent change	-25.0	35.3	-12.5	50.0	45.5	0.0	400.0	0.0	8.4

**Table 1.2** Year to date

Year to date	NSW	Vic	Qld	SA	WA	Tas	NT	ACT	Australia
January 2015 - November 2015	322	233	230	97	143	32	42	11	1,110
January 2016 - November 2016	356	265	220	87	172	34	41	10	1,185
Per cent change	10.6	13.7	-4.3	-10.3	20.3	6.3	-2.4	-9.1	6.8

**Table 1.3** Year ending November

12 months ended November	NSW	Vic	Qld	SA	WA	Tas	NT	ACT	Australia
2012	381	285	283	90	182	28	50	11	1,310
2013	333	237	274	103	163	34	40	7	1,191
2014	317	265	229	94	181	38	39	10	1,173
2015	340	246	243	116	160	34	44	12	1,195
2016	384	284	233	92	189	36	48	14	1,280
Latest per cent change	12.9	15.4	-4.1	-20.7	18.1	5.9	9.1	16.7	7.1
Average trend change per year (per cent)	0.4	0.3	-5.0	1.6	0.6	5.2	0.1	10.8	-0.4

## 2. Deaths by road user, age-group and gender

**Table 2.1** By road user

12 months ended November	Driver	Passenger	Pedestrian	Motorcyclist <sup>b</sup>	Pedal <sup>b</sup> cyclist	Total <sup>c</sup>
2012	595	274	177	226	37	1,310
2013	581	207	150	200	45	1,191
2014	531	232	158	200	49	1,173
2015	552	246	162	203	29	1,195
2016	626	204	176	239	32	1,280
Latest per cent change	13.4	-17.1	8.6	17.7	10.3	7.1
Average trend change per year (per cent)	0.5	-4.1	0.7	1.3	-7.0	-0.4

**Table 2.2** By age-group<sup>a</sup> (years)

12 months ended November	0 to 16	17 to 25	26 to 39	40 to 64	65 to 74	≥ 75	Total <sup>c</sup>
2012	81	275	305	395	91	162	1,310
2013	63	242	246	377	114	149	1,191
2014	66	234	256	364	117	133	1,173
2015	64	230	264	368	118	151	1,195
2016	56	257	285	411	106	164	1,280
Latest per cent change	-12.5	11.7	8.0	11.7	-10.2	8.6	7.1
Average trend change per year (per cent)	-7.0	-1.8	-0.6	0.6	3.5	0.4	-0.4

## 2. Deaths by road user, age-group and gender (continued)

**Table 2.3** By gender

<b>12 months ended November</b>	<i>Males</i>	<i>Females</i>	<i>Total<sup>d</sup></i>
2012	937	373	1,310
2013	849	341	1,191
2014	843	329	1,173
2015	855	340	1,195
2016	940	340	1,280
<i>Latest per cent change</i>	9.9	0.0	7.1
<i>Average trend change per year (per cent)</i>	0.1	-1.9	-0.4

a Age groups were changed in March 2014.

b Includes pillion passengers.

c Includes deaths to persons with either age or road user type not recorded.

d Includes deaths to persons with gender not recorded.

## 3. Annual deaths per 100,000 population

**Table 3.1** Year ended November

<b>12 months ended November</b>	<i>NSW</i>	<i>Vic</i>	<i>Qld</i>	<i>SA</i>	<i>WA</i>	<i>Tas</i>	<i>NT</i>	<i>ACT</i>	<i>Australia</i>
2012	5.22	5.07	6.21	5.44	7.49	5.47	21.26	2.94	5.77
2013	4.50	4.14	5.90	6.17	6.49	6.63	16.53	1.84	5.16
2014	4.22	4.54	4.85	5.58	7.07	7.38	16.05	2.59	5.00
2015	4.46	4.14	5.09	6.82	6.17	6.58	18.09	3.06	5.02
2016	4.97	4.68	4.81	5.38	7.21	6.93	19.66	3.53	5.31
<i>Latest per cent change</i>	11.4	13.2	-5.4	-21.1	16.8	5.4	8.6	15.2	5.6
<i>Average trend change per year (per cent)</i>	-1.1	-1.6	-6.3	0.8	-1.2	4.8	-0.7	9.2	-1.9

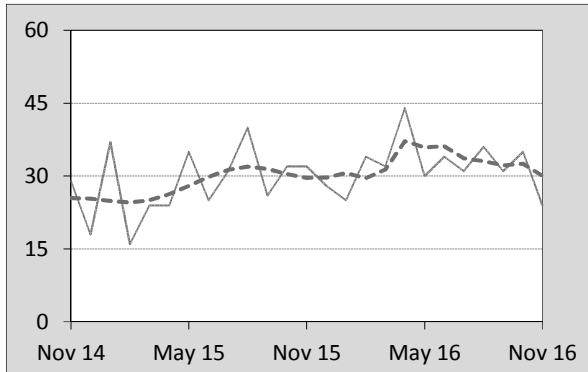
**Table 3.2** Calendar year period

<b>Calendar year</b>	<i>NSW</i>	<i>Vic</i>	<i>Qld</i>	<i>SA</i>	<i>WA</i>	<i>Tas</i>	<i>NT</i>	<i>ACT</i>	<i>Australia</i>
2011	5.04	5.18	6.01	6.28	7.61	4.69	19.46	1.63	5.72
2012	5.05	5.01	6.13	5.68	7.51	6.05	20.77	3.20	5.72
2013	4.50	4.24	5.83	5.87	6.44	7.02	15.25	1.84	5.13
2014	4.09	4.25	4.72	6.35	7.16	6.41	16.03	2.60	4.90
2015	4.59	4.24	5.08	6.00	6.18	6.58	20.06	3.84	5.07
<i>Latest per cent change</i>	12.4	-0.2	7.6	-5.4	-13.7	2.6	25.2	47.8	3.3

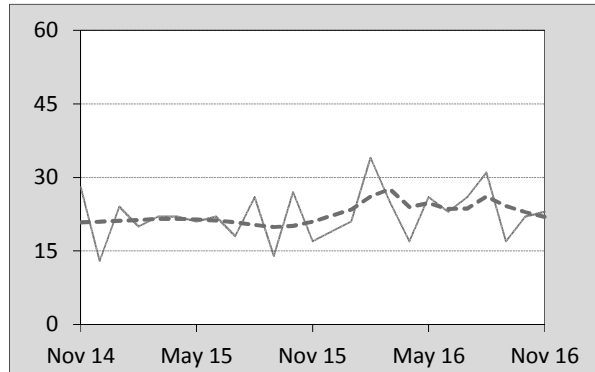
#### 4. Monthly deaths by jurisdiction — last 24 months

— raw  
 - - - smoothed  
 (13-point moving average)

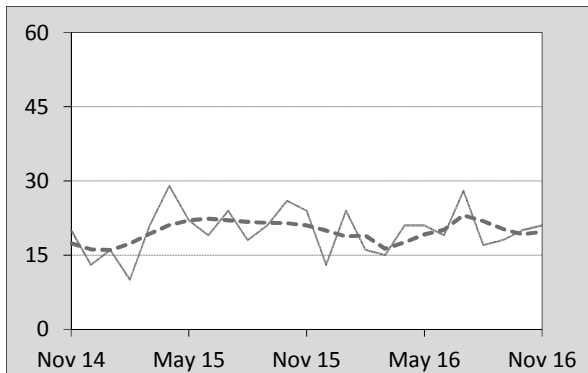
**Figure 4.1 NSW**



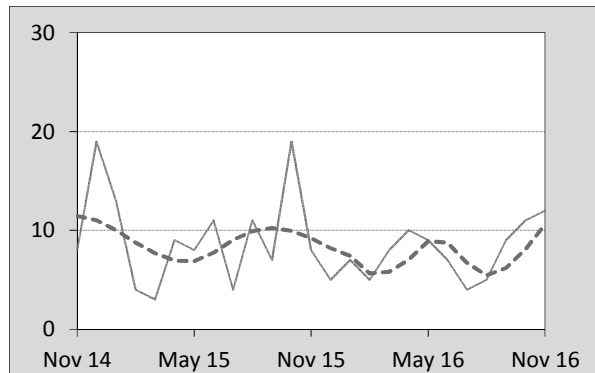
**Figure 4.2 Vic**



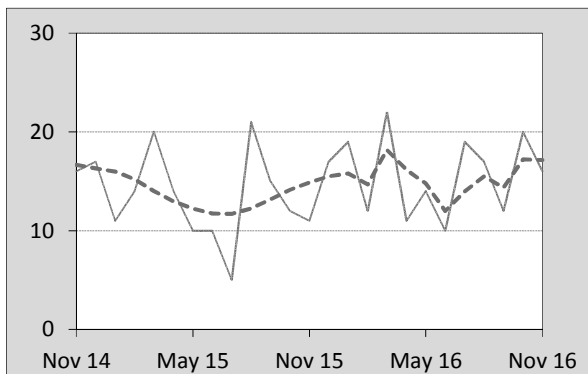
**Figure 4.3 Qld**



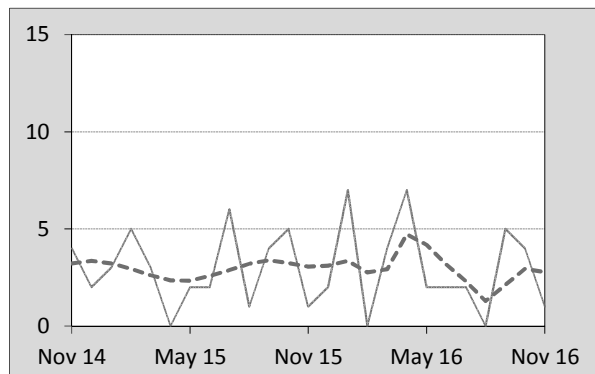
**Figure 4.4 SA**



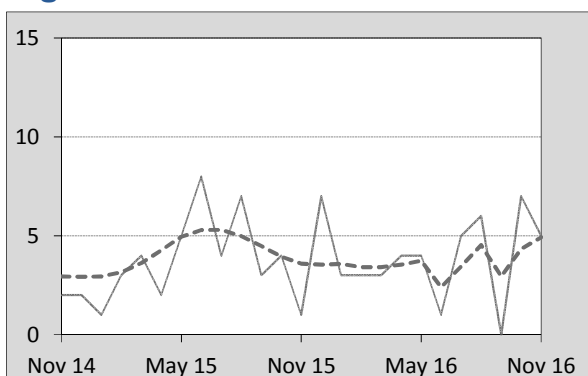
**Figure 4.5 WA**



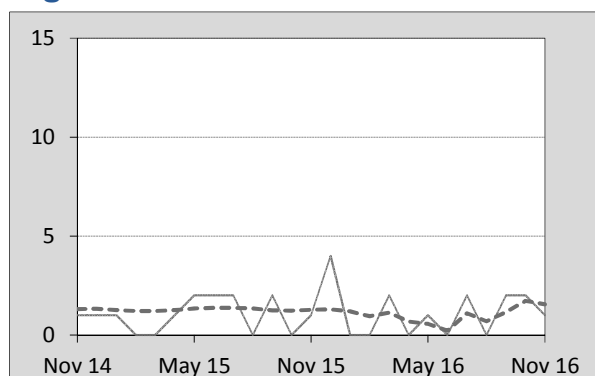
**Figure 4.6 Tas**



**Figure 4.7 NT**



**Figure 4.8 ACT**



## 5. Fatal crashes: counts and characteristics

**Table 5.1 By Crash type and Posted speed limit**

12 months ended November	Crash type <sup>a</sup>			Posted speed limit				Total <sup>b</sup>
	Single	Multiple	Pedestrian	0 to 60	70 to 90	100	≥ 110	
2012	521	506	174	405	282	368	131	1,201
2013	519	432	148	342	250	366	134	1,099
2014	476	440	157	329	234	368	128	1,073
2015	491	440	160	352	246	344	139	1,091
2016	520	502	164	347	281	354	167	1,186
Latest per cent change	5.9	14.1	2.5	-1.4	14.2	2.9	20.1	8.7
Average trend change per year (per cent)	-0.6	0.0	-0.4	-2.8	-0.2	-1.4	5.4	-0.3

**Table 5.2 By Day of week and Time of day**

12 months ended November	Day of week <sup>c</sup>		Time of Day <sup>d</sup>	
	Weekday	Weekend	Day	Night
2012	745	456	756	445
2013	649	450	693	406
2014	671	402	682	391
2015	666	425	671	420
2016	726	460	717	469
Latest per cent change	9.0	8.2	6.9	11.7
Average trend change per year (per cent)	-0.3	-0.4	-1.4	1.4

a 'Single' and 'Multiple' refer to the number of vehicles involved in a fatal crash where there is no pedestrian killed.

b Includes crashes where speed limit is unknown.

c 'Weekday' refers to 6am Monday through to 5:59pm Friday.

d 'Day' refers to 6am through to 5:59 pm.

## Appendix

### Definition

The road safety agencies in each jurisdiction use detailed criteria to define road crashes and road deaths. Briefly, a death is classified as resulting from a road crash if the crash occurred on a public road, is unintentional and the death occurred within 30 days from injuries sustained in the crash.

### Population rates

Rates per population are based on the deaths to the current 12-month period, and the population at the midpoint of the period. The population at midpoints is interpolated if necessary.

### Average trend change ( % per year )

Calculated by fitting an exponential curve through the five data points, and quoting the constant (annual) change of this curve.

### Other sources for the tables in this bulletin

The underlying database used to produce this bulletin — the *Australian Road Deaths Database* is available for data extraction at <[http://www.bitre.gov.au/statistics/safety/fatal\\_road\\_crash\\_database.aspx](http://www.bitre.gov.au/statistics/safety/fatal_road_crash_database.aspx)>.

Road deaths from recent months are preliminary and subject to revision.