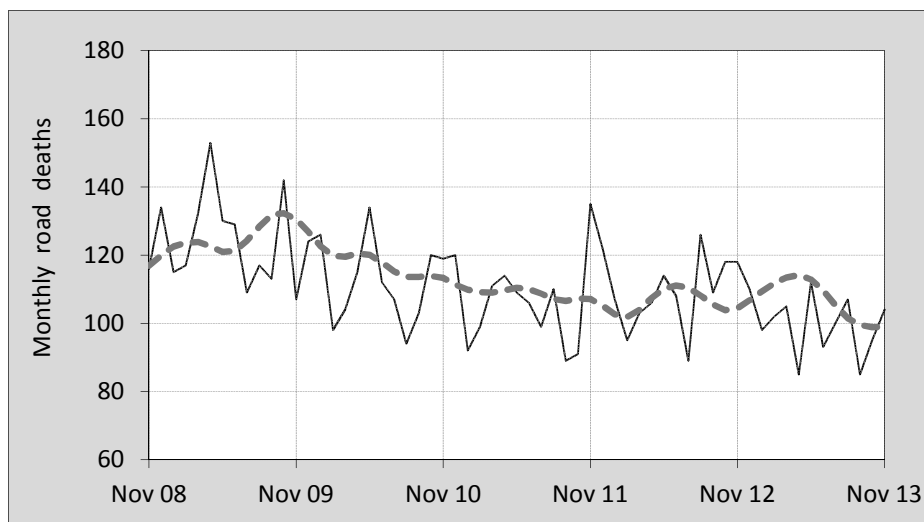




This month's key figures

- There was a total of 104 road deaths during the month of November 2013. In comparison to the average for November over the previous five years, the current figure is 12.6 per cent lower.
- During the 12 months ended November there were 1,196 road deaths. This is a 9.0 per cent reduction compared to the total for the 12-monthly period ending November 2012.
- Presently the rate of annual deaths per 100,000 population stands at 5.2. Compared to the figure for the 12-monthly period ending November 2012, this is a 10.4 per cent reduction.

Monthly Australian road deaths — last five years, with trend



Data Sources

Data are obtained from

- Transport for NSW
- Vicroads
- Department of Transport and Main Roads, Queensland
- Department for Transport, Energy and Infrastructure, S.A.
- Western Australia Police
- Department of Infrastructure, Energy and Resources, Tasmania
- Department of Transport, Northern Territory
- Department of Territory and Municipal Services, ACT
- Australian Bureau of Statistics (3101.0)

Inquiries

For further information about data in this bulletin, contact:

Bureau of Infrastructure, Transport and Regional Economics

Web : www.bitre.gov.au

Email : roadsafety@infrastructure.gov.au

Road deaths from recent months are preliminary and subject to revision.

© Copyright. Commonwealth of Australia

I. Current month and year to date

Deaths by jurisdiction

Current month	NSW	Vic	Qld	SA	WA	Tas	NT	ACT	Australia
November 2012	35	26	23	8	19	1	4	2	118
November 2013	33	23	19	9	13	5	2	0	104
Per cent change	-5.7	-11.5	-17.4	12.5	-31.6	400.0	-50.0	-	-11.9

Year to date	NSW	Vic	Qld	SA	WA	Tas	NT	ACT	Australia
January 2012 - November 2012	341	258	258	83	171	27	44	11	1,193
January 2013 - November 2013	311	212	251	92	149	30	35	6	1,086
Per cent change	-8.8	-17.8	-2.7	10.8	-12.9	11.1	-20.5	-45.5	-9.0

2. Yearly deaths — last five 12 monthly periods

Deaths by jurisdiction

12 months ended November	NSW	Vic	Qld	SA	WA	Tas	NT	ACT	Australia
2009	453	281	342	121	194	62	32	13	1,498
2010	416	294	243	118	187	34	46	18	1,356
2011	349	288	269	104	189	26	43	7	1,275
2012	381	285	283	90	186	29	50	11	1,315
2013	339	236	273	103	163	36	39	7	1,196
Latest per cent change	-11.0	-17.2	-3.5	14.4	-12.4	24.1	-22.0	-36.4	-9.0
Average trend change per year (per cent)	-6.5	-3.7	-2.9	-5.8	-3.5	-11.7	4.9	-15.9	-4.7

Deaths by road user

12 months ended November	Driver	Passenger	Pedestrian	Motorcyclist	Cyclist	Total ^a
2009	714	320	198	232	33	1,498
2010	633	286	170	228	38	1,356
2011	583	281	182	196	32	1,275
2012	598	273	180	226	37	1,315
2013	592	204	147	200	43	1,196
Latest per cent change	-1.0	-25.3	-18.3	-11.5	16.2	-9.0
Average trend change per year (per cent)	-4.2	-9.0	-5.2	-3.0	5.2	-4.7

a Includes deaths where road user type is unknown

Deaths by age-group (years)

12 months ended November	<i>0 to 16</i>	<i>17 to 25</i>	<i>26 to 39</i>	<i>40 to 59</i>	<i>60 to 69</i>	<i>≥ 70</i>	<i>Total^b</i>
2009	98	379	360	383	101	177	1,498
2010	75	328	316	365	112	159	1,356
2011	89	285	273	338	101	189	1,275
2012	82	276	306	314	131	205	1,315
2013	65	239	245	310	132	199	1,196
<i>Latest per cent change</i>	-20.7	-13.4	-19.9	-1.3	0.8	-2.9	-9.0
<i>Average trend change per year (per cent)</i>	-7.1	-10.4	-7.7	-5.6	7.2	5.0	-4.7

b Includes deaths to persons with age not recorded.

Deaths by gender

12 months ended November	<i>Males</i>	<i>Females</i>	<i>Total^c</i>
2009	1,092	403	1,498
2010	980	374	1,356
2011	919	354	1,275
2012	941	374	1,315
2013	856	338	1,196
<i>Latest per cent change</i>	-9.0	-9.6	-9.0
<i>Average trend change per year (per cent)</i>	-5.1	-3.5	-4.7

c Includes deaths to persons with gender not recorded.

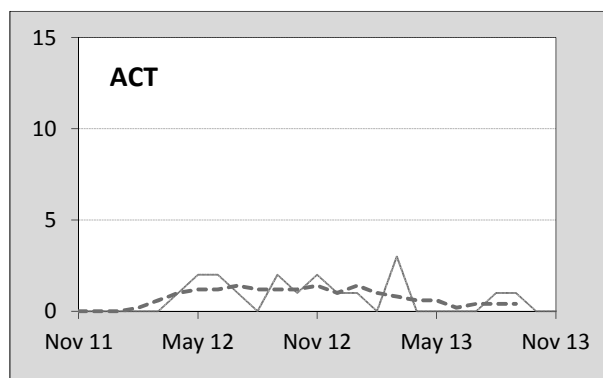
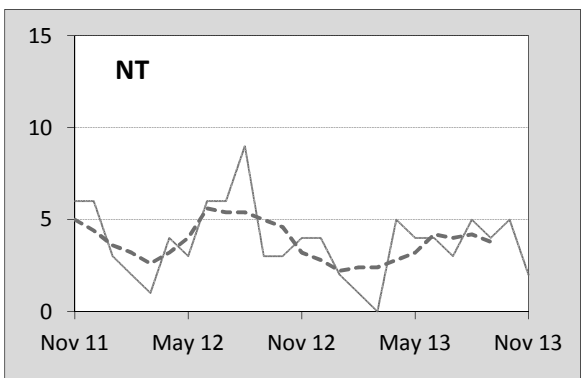
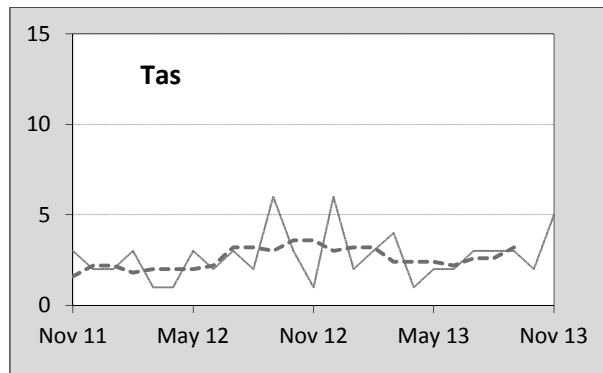
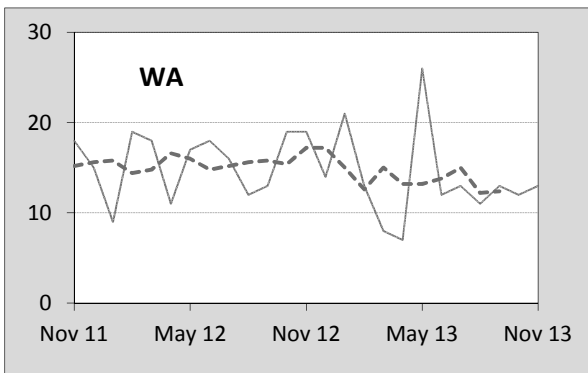
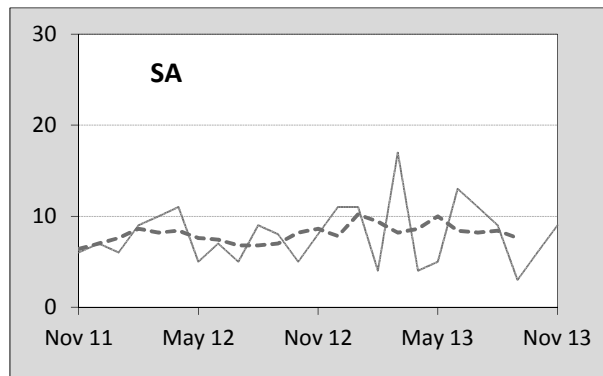
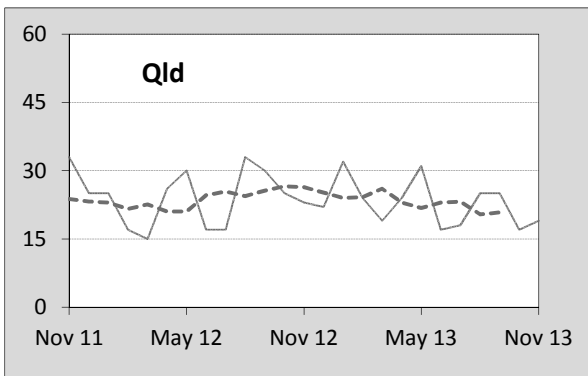
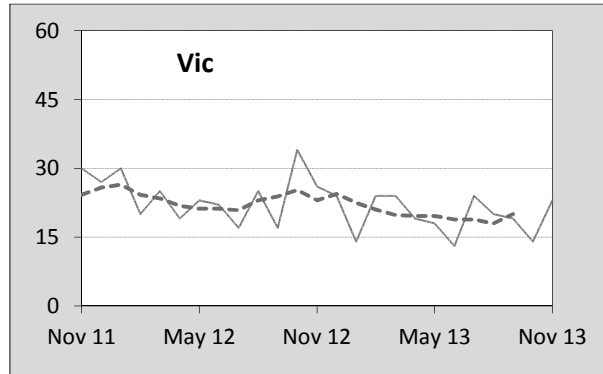
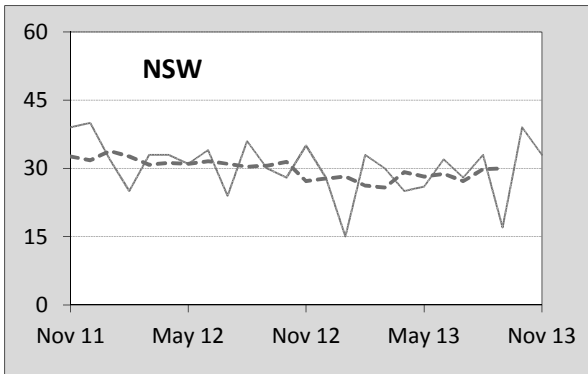
3. Annual deaths per 100,000 population

By jurisdiction

12 months ended November	<i>NSW</i>	<i>Vic</i>	<i>Qld</i>	<i>SA</i>	<i>WA</i>	<i>Tas</i>	<i>NT</i>	<i>ACT</i>	<i>Australia</i>
2009	6.43	5.24	7.92	7.53	8.68	12.30	14.19	3.67	6.92
2010	5.83	5.39	5.52	7.26	8.18	6.69	20.05	4.98	6.16
2011	4.84	5.21	6.02	6.35	8.05	5.08	18.62	1.90	5.71
2012	5.22	5.07	6.20	5.44	7.66	5.66	21.30	2.94	5.79
2013	4.59	4.13	5.88	6.17	6.52	6.99	16.26	1.82	5.19
<i>Latest per cent change</i>	-12.0	-18.5	-5.2	13.5	-14.9	23.5	-23.7	-37.9	-10.4
<i>Average trend change per year (per cent)</i>	-7.5	-5.2	-4.7	-6.6	-6.2	-12.2	3.4	-17.5	-6.2
Calendar year	<i>NSW</i>	<i>Vic</i>	<i>Qld</i>	<i>SA</i>	<i>WA</i>	<i>Tas</i>	<i>NT</i>	<i>ACT</i>	<i>Australia</i>
2008	5.39	5.76	7.77	6.23	9.44	7.82	34.11	4.02	6.76
2009	6.42	5.40	7.65	7.40	8.48	12.49	13.27	3.38	6.86
2010	5.67	5.27	5.65	7.25	8.42	6.09	21.32	5.25	6.14
2011	5.04	5.18	6.01	6.28	7.65	4.69	19.02	1.63	5.72
2012	5.05	5.01	6.13	5.67	7.60	6.44	20.41	3.20	5.73
<i>Latest per cent change</i>	0.2	-3.4	2.0	-9.7	-0.7	37.3	7.3	96.2	0.3

4. Monthly deaths by jurisdiction — last 24 months

— raw
 - - - smoothed (unweighted 5-point moving average)



5. Fatal crashes: counts and characteristics

12 months ended November	Crash type ^d			Posted speed limit				Total ^e
	Single	Multiple	Pedestrian	0 to 60	70 to 90	100	≥ 110	
2009	655	515	192	421	307	431	178	1,362
2010	553	518	168	350	275	434	157	1,239
2011	501	469	180	346	241	387	157	1,150
2012	523	506	177	406	281	370	132	1,206
2013	530	427	145	335	252	352	132	1,102
<i>Average trend change per year (per cent)</i>	-4.7	-3.9	-5.0	-3.0	-3.7	-5.5	-7.4	-4.4

12 months ended November	Day of week ^f		Time of Day ^g	
	Weekday	Weekend	Day	Night
2009	848	514	780	582
2010	714	525	729	510
2011	683	467	702	448
2012	750	456	760	446
2013	652	450	699	403
<i>Average trend change per year (per cent)</i>	-4.7	-4.0	-1.8	-8.3

d 'Single' and 'Multiple' refer to the number of vehicles involved in a fatal crash where there is no pedestrian killed.

e Includes crashes where speed limit is unknown

f 'Weekday' refers to 6am Monday through to 5:59pm Friday.

g 'Day' refers to 6am through to 5:59 pm.

Appendix

Definition

The road safety agencies in each jurisdiction use detailed criteria to define road crashes and road deaths. Briefly, a death is classified as resulting from a road crash if the crash occurred on a public road, is unintentional and the death occurred within 30 days from injuries sustained in the crash.

Population rates

Rates per population are based on the deaths to the current 12 monthly period, and the population at the midpoint of the period. The population at midpoints are interpolated if necessary.

Average trend change (% per year)

Calculated by fitting an exponential curve through the five data points, and quoting the constant (annual) change of this curve.

Other sources for the tables in this bulletin

The underlying database used to produce this bulletin — the Australian Road Deaths Database is available for online querying and data extraction at

< http://www.bitre.gov.au/statistics/safety/fatal_road_crash_database.aspx >

Road deaths from recent months are preliminary and subject to revision.