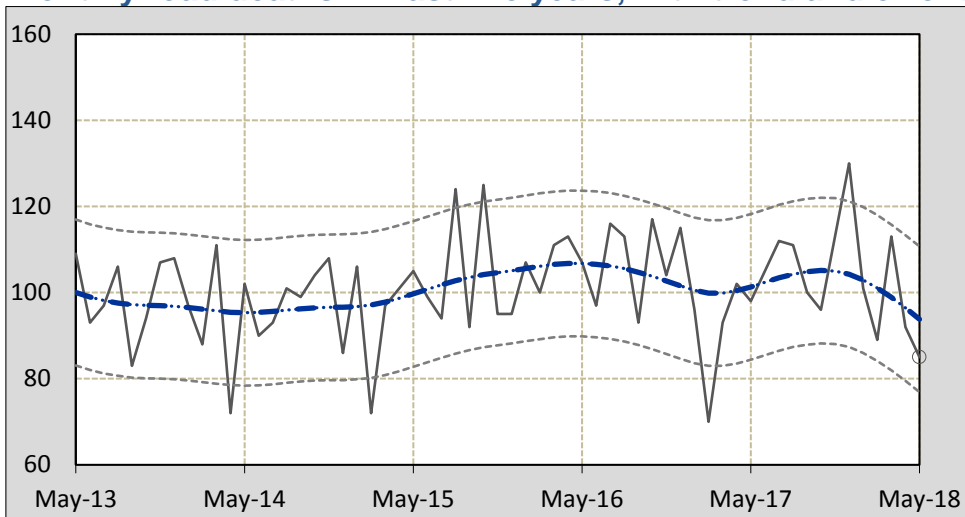




This month's key figures

- There was a total of 85 road deaths during the month of May 2018. In comparison to the average for May over the previous five years, the current figure is 18.4 per cent lower.
- During the 12 months ended May 2018, there were 1,247 road deaths. This is a 2.7 per cent increase compared to the total for the 12-month period ended May 2017.
- Presently, the rate of annual deaths per 100,000 population stands at 5.0. Compared to the figure for the 12-month period ending May 2017, this is a 1.0 per cent increase.

Monthly road deaths — last five years, with trend and error bounds



Note: Shown is a trend and a 90 per cent prediction interval for the monthly observations.

Data Sources

Data are obtained from

- Transport for NSW
- Vicroads
- Department of Transport and Main Roads, Queensland
- Department of Planning, Transport and Infrastructure, S.A.
- Western Australia Police
- Department of State Growth, Tasmania
- Department of Transport, Northern Territory
- Transport Canberra and City Services Directorate, ACT
- Australian Bureau of Statistics (3101.0)

Inquiries

For further information about data in this bulletin, contact:

Bureau of Infrastructure, Transport and
Regional Economics
Web : www.bitre.gov.au
Email : roadsafety@infrastructure.gov.au

Road deaths from recent months are preliminary and subject to revision.

See www.roadsafety.gov.au for performance indicators used to monitor progress under the National Road Safety Strategy 2011-2020 (NRSS).

1. Deaths by jurisdiction

Table 1.1 Current month

Current month	NSW	Vic	Qld	SA	WA	Tas	NT	ACT	Australia
May 2017	35	21	24	5	6	5	1	1	98
May 2018	24	23	15	7	9	2	3	2	85
Per cent change	-31.4	9.5	-37.5	40.0	50.0	-60.0	200.0	100.0	-13.3

Table 1.2 Year to date

Year to date	NSW	Vic	Qld	SA	WA	Tas	NT	ACT	Australia
January 2017 - May 2017	142	106	91	30	63	11	12	4	459
January 2018 - May 2018	151	89	95	34	68	16	21	6	480
Per cent change	6.3	-16.0	4.4	13.3	7.9	45.5	75.0	50.0	4.6

Table 1.3 Year ending May

12 months ended May	NSW	Vic	Qld	SA	WA	Tas	NT	ACT	Australia
2014	344	252	227	94	154	37	43	7	1,158
2015	304	249	235	108	187	33	36	10	1,162
2016	378	264	243	101	169	41	51	15	1,262
2017	358	275	244	80	178	28	40	11	1,214
2018	399	241	251	105	164	40	40	7	1,247
Latest per cent change	11.5	-12.4	2.9	31.3	-7.9	42.9	0.0	-36.4	2.7
Average trend change per year (per cent)	4.7	0.1	2.4	-0.8	0.8	-0.1	-0.4	1.0	1.9

2. Deaths by road user, age-group and gender

Table 2.1 By road user

12 months ended May	Driver	Passenger	Pedestrian	Motorcyclist ^b	Pedal ^b cyclist	Total ^c
2014	524	221	163	187	61	1,158
2015	543	236	149	203	28	1,162
2016	595	235	166	229	35	1,262
2017	580	204	165	233	26	1,214
2018	589	229	179	199	42	1,247
Latest per cent change	1.6	12.3	8.5	-14.6	61.5	2.7
Average trend change per year (per cent)	3.0	-0.7	2.9	2.7	-7.9	1.9

Table 2.2 By age-group^a (years)

12 months ended May	0 to 16	17 to 25	26 to 39	40 to 64	65 to 74	≥ 75	Total ^c
2014	60	214	247	366	117	154	1,158
2015	72	245	249	348	105	141	1,162
2016	58	226	280	405	119	174	1,262
2017	68	254	263	382	99	148	1,214
2018	38	242	246	408	131	176	1,247
Latest per cent change	-44.1	-4.7	-6.5	6.8	32.3	18.9	2.7
Average trend change per year (per cent)	-9.3	2.9	0.5	3.2	1.7	3.2	1.9

2. Deaths by road user, age-group and gender (continued)

Table 2.3 By gender

12 months ended May	<i>Males</i>	<i>Females</i>	<i>Total^d</i>
2014	844	313	1,158
2015	814	348	1,162
2016	921	341	1,262
2017	896	317	1,214
2018	909	336	1,247
<i>Latest per cent change</i>	1.5	6.0	2.7
<i>Average trend change per year (per cent)</i>	2.5	0.5	1.9

a Age groups were changed in March 2014.

b Includes pillion passengers.

c Includes deaths to persons with either age or road user type not recorded.

d Includes deaths to persons with gender not recorded.

3. Annual deaths per 100,000 population

Table 3.1 Year ended May

12 months ended May	<i>NSW</i>	<i>Vic</i>	<i>Qld</i>	<i>SA</i>	<i>WA</i>	<i>Tas</i>	<i>NT</i>	<i>ACT</i>	<i>Australia</i>
2014	4.62	4.32	4.85	5.60	6.14	7.21	17.69	1.81	4.97
2015	4.02	4.18	4.95	6.38	7.39	6.42	14.78	2.55	4.91
2016	4.93	4.34	5.05	5.92	6.63	7.94	20.85	3.76	5.26
2017	4.60	4.41	5.00	4.66	6.93	5.40	16.30	2.71	4.98
2018	5.04	3.78	5.06	6.07	6.33	7.65	16.26	1.69	5.03
<i>Latest per cent change</i>	9.6	-14.4	1.1	30.3	-8.7	41.8	-0.3	-37.6	1.0
<i>Average trend change per year (per cent)</i>	3.1	-2.1	1.0	-1.5	0.0	-0.5	-0.7	-0.8	0.4

Table 3.2 Calendar year period

Calendar year	<i>NSW</i>	<i>Vic</i>	<i>Qld</i>	<i>SA</i>	<i>WA</i>	<i>Tas</i>	<i>NT</i>	<i>ACT</i>	<i>Australia</i>
2013	4.49	4.21	5.82	5.86	6.50	7.02	15.24	1.82	5.13
2014	4.08	4.20	4.72	6.40	7.25	6.42	16.01	2.57	4.90
2015	4.59	4.18	5.08	5.99	6.29	6.60	20.00	3.78	5.05
2016	4.91	4.69	5.18	5.02	7.54	7.15	18.31	2.73	5.34
2017	4.96	4.08	5.01	5.86	6.16	6.72	12.60	1.22	4.98
<i>Latest per cent change</i>	1.0	-13.1	-3.2	16.7	-18.3	-6.0	-31.2	-55.3	-6.7

4. Monthly deaths by jurisdiction — last 24 months

— raw
 - - - smoothed
 (13-point moving average)

Figure 4.1 NSW

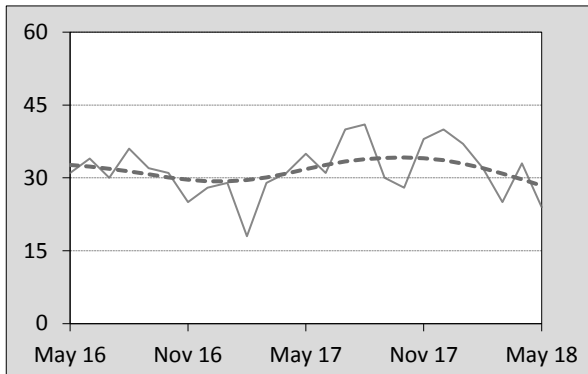


Figure 4.2 Vic

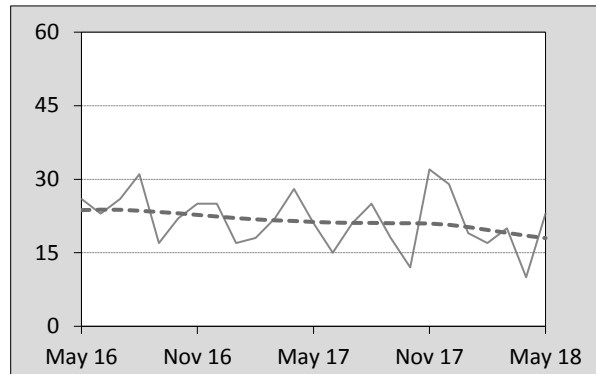


Figure 4.3 Qld

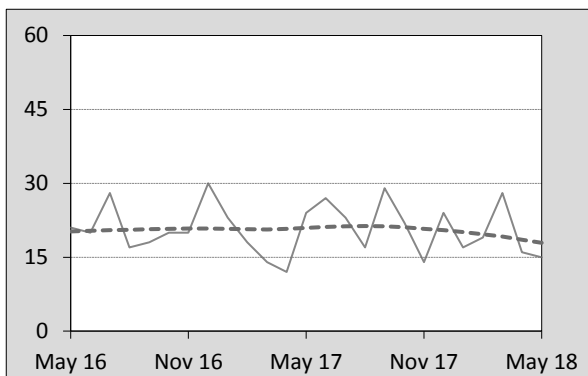


Figure 4.4 SA

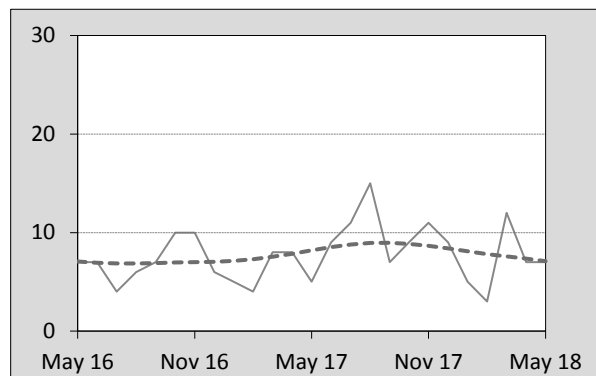


Figure 4.5 WA

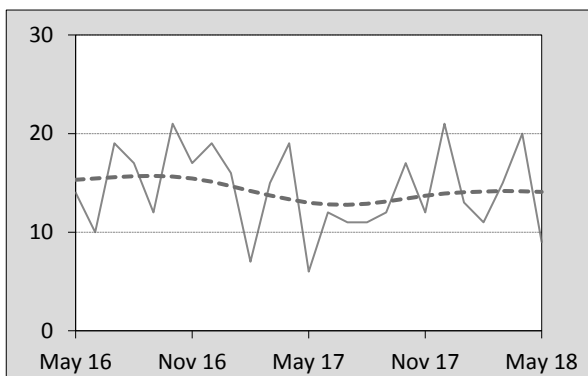


Figure 4.6 Tas

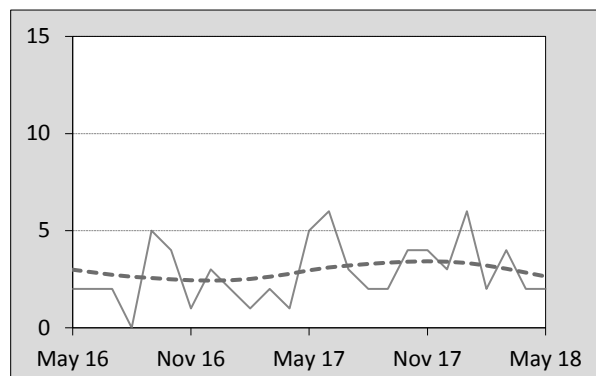


Figure 4.7 NT

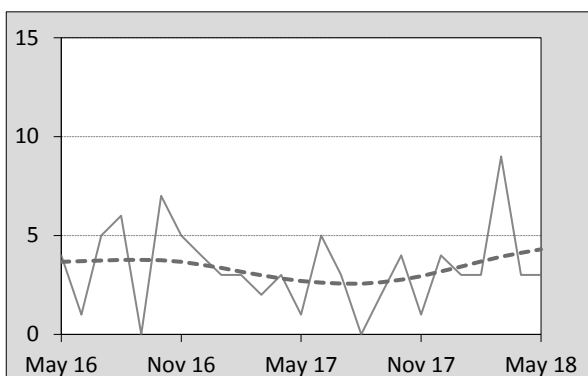
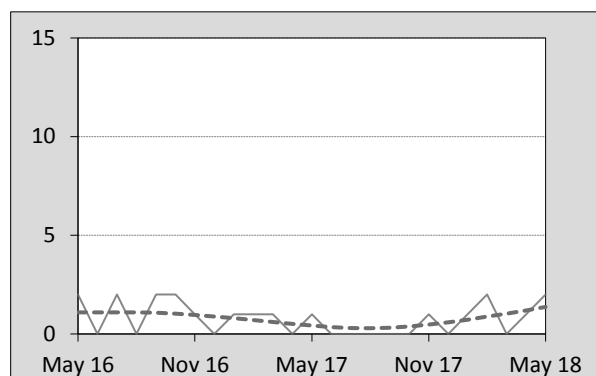


Figure 4.8 ACT



5. Fatal crashes: counts and characteristics

Table 5.1 By Crash type and Posted speed limit

12 months ended May	Crash type ^a			Posted speed limit						Total ^b
	Single	Multiple	Pedestrian	40	50	60	70 to 90	100	≥ 110	
2014	452	452	162	11	122	188	243	359	128	1,066
2015	486	426	147	17	114	203	223	347	140	1,059
2016	514	479	164	12	132	221	264	357	160	1,157
2017	504	467	164	17	121	198	279	370	137	1,135
2018	502	470	176	24	155	219	237	322	146	1,148
Latest per cent change	-0.4	0.6	7.3	41.2	28.1	10.6	-15.1	-13.0	6.6	1.1
Average trend change per year (per cent)	2.5	1.7	2.8	16.9	5.5	2.8	1.8	-1.5	2.4	2.2

Table 5.2 By Day of week and Time of day

12 months ended May	Day of week ^c		Time of Day ^d	
	Weekday	Weekend	Day	Night
2014	648	418	680	386
2015	639	420	667	392
2016	735	422	725	432
2017	694	441	684	451
2018	699	449	721	427
Latest per cent change	0.7	1.8	5.4	-5.3
Average trend change per year (per cent)	2.4	1.9	1.4	3.5

a 'Single' and 'Multiple' refer to the number of vehicles involved in a fatal crash where there is no pedestrian killed.

b Includes crashes where speed limit is unknown or where the posted speed limit is 30km/hr or less.

c 'Weekday' refers to 6am Monday through to 5:59pm Friday.

d 'Day' refers to 6am through to 5:59 pm.

Appendix

Definition

The road safety agencies in each jurisdiction use detailed criteria to define road crashes and road deaths. Briefly, a death is classified as resulting from a road crash if the crash occurred on a public road, is unintentional and the death occurred within 30 days from injuries sustained in the crash.

Population rates

Rates per population are based on the deaths to the current 12-month period, and the population at the midpoint of the period. The population at midpoints is interpolated if necessary.

Average trend change (% per year)

Designed to provide a **one-number summary** of growth rates over recent time periods. Calculated by fitting an exponential curve through the data points, and quoting the constant (annual) change of this curve.

Smooth trend lines

These trend lines are designed to track medium-term trends and turning points in the raw data. Whittaker-Henderson smoothers have been used with value of 80 for the smoothing parameter. The application R (package *pracma*) can be used for such trend lines. Error bounds are 90% (approximately) around the monthly data.

Other sources for the tables in this bulletin

The underlying database used to produce this bulletin — *the Australian Road Deaths Database* is available for data extraction at <http://www.bitre.gov.au/statistics/safety/fatal_road_crash_database.aspx>.

Road deaths from recent months are preliminary and subject to revision.