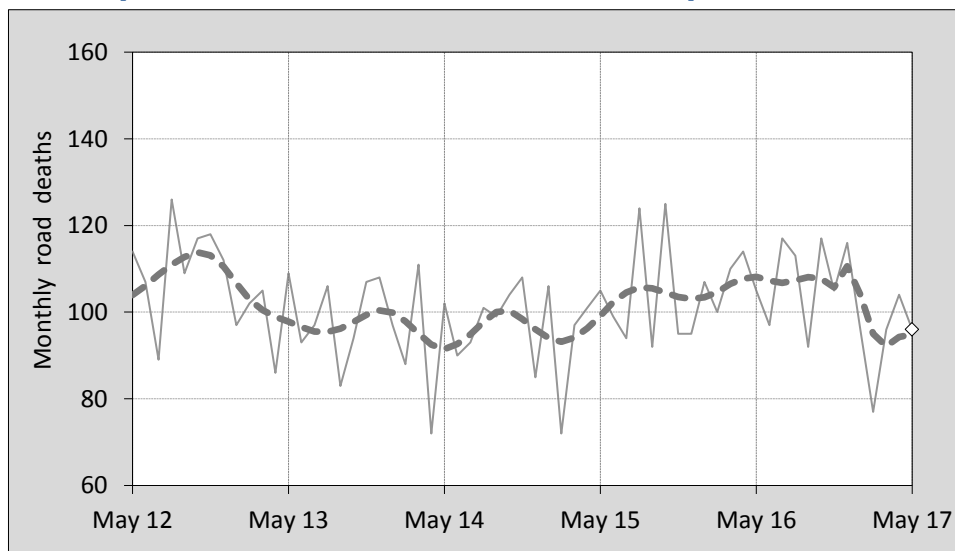




This month's key figures

- There was a total of 96 road deaths during the month of May 2017. In comparison to the average for May over the previous five years, the current figure is 10.3 per cent lower.
- During the 12 months ended May 2017, there were 1,226 road deaths. This is a 2.7 per cent decrease compared to the total for the 12-month period ended May 2016.
- Presently, the rate of annual deaths per 100,000 population stands at 5.0. Compared to the figure for the 12-month period ending May 2016, this is a 4.1 per cent decrease.

Monthly Australian road deaths — last five years, with trend



Data Sources

Data are obtained from

- Transport for NSW
- Vicroads
- Department of Transport and Main Roads, Queensland
- Department of Planning, Transport and Infrastructure, S.A.
- Western Australia Police
- Department of State Growth, Tasmania
- Department of Transport, Northern Territory
- Transport Canberra and City Services Directorate, ACT
- Australian Bureau of Statistics (3101.0)

Inquiries

For further information about data in this bulletin, contact:

Bureau of Infrastructure, Transport and
Regional Economics
Web : www.bitre.gov.au
Email : roadsafety@infrastructure.gov.au

Road deaths from recent months are preliminary and subject to revision.

See www.roadsafety.gov.au for performance indicators used to monitor progress under the National Road Safety Strategy 2011-2020 (NRSS).

© Copyright. Commonwealth of Australia

1. Deaths by jurisdiction

Table 1.1 Current month

Current month	NSW	Vic	Qld	SA	WA	Tas	NT	ACT	Australia
May 2016	30	26	21	7	14	2	4	1	105
May 2017	38	16	23	6	6	5	1	1	96
Per cent change	26.7	-38.5	9.5	-14.3	-57.1	150.0	-75.0	0.0	-8.6

Table 1.2 Year to date

Year to date	NSW	Vic	Qld	SA	WA	Tas	NT	ACT	Australia
January 2016 - May 2016	163	122	98	36	78	20	17	2	536
January 2017 - May 2017	153	102	91	33	64	11	12	3	469
Per cent change	-6.1	-16.4	-7.1	-8.3	-17.9	-45.0	-29.4	50.0	-12.5

Table 1.3 Year ending May

12 months ended May	NSW	Vic	Qld	SA	WA	Tas	NT	ACT	Australia
2013	343	264	297	94	185	33	48	13	1,277
2014	344	252	227	94	154	37	43	7	1,158
2015	304	249	235	107	187	33	36	10	1,161
2016	377	265	243	101	169	41	51	13	1,260
2017	371	271	244	83	179	28	40	10	1,226
Latest per cent change	-1.6	2.3	0.4	-17.8	5.9	-31.7	-21.6	-23.1	-2.7
Average trend change per year (per cent)	2.5	1.0	-3.2	-1.8	0.3	-2.2	-1.9	0.9	0.0

2. Deaths by road user, age-group and gender

Table 2.1 By road user

12 months ended May	Driver	Passenger	Pedestrian	Motorcyclist ^b	Pedal ^b cyclist	Total ^c
2013	624	242	154	215	35	1,277
2014	524	221	163	187	61	1,158
2015	542	236	149	203	28	1,161
2016	594	235	166	228	35	1,260
2017	595	201	166	231	26	1,226
Latest per cent change	0.2	-14.5	0.0	1.3	-25.7	-2.7
Average trend change per year (per cent)	0.3	-3.1	1.7	3.5	-10.9	0.0

Table 2.2 By age-group^a (years)

12 months ended May	0 to 16	17 to 25	26 to 39	40 to 64	65 to 74	≥ 75	Total ^c
2013	68	278	276	408	106	140	1,277
2014	60	213	248	366	117	154	1,158
2015	72	245	249	348	104	140	1,161
2016	58	226	280	404	119	173	1,260
2017	68	257	266	391	100	144	1,226
Latest per cent change	17.2	13.7	-5.0	-3.2	-16.0	-16.8	-2.7
Average trend change per year (per cent)	-0.3	-1.0	0.5	0.1	-1.0	1.7	0.0

2. Deaths by road user, age-group and gender (continued)

Table 2.3 By gender

12 months ended May	<i>Males</i>	<i>Females</i>	<i>Total^d</i>
2013	903	373	1,277
2014	844	313	1,158
2015	813	348	1,161
2016	919	341	1,260
2017	908	317	1,226
<i>Latest per cent change</i>	-1.2	-7.0	-2.7
<i>Average trend change per year (per cent)</i>	1.0	-2.4	0.0

a Age groups were changed in March 2014.

b Includes pillion passengers.

c Includes deaths to persons with either age or road user type not recorded.

d Includes deaths to persons with gender not recorded.

3. Annual deaths per 100,000 population

Table 3.1 Year ended May

12 months ended May	<i>NSW</i>	<i>Vic</i>	<i>Qld</i>	<i>SA</i>	<i>WA</i>	<i>Tas</i>	<i>NT</i>	<i>ACT</i>	<i>Australia</i>
2013	4.67	4.65	6.45	5.66	7.48	6.44	20.10	3.44	5.58
2014	4.62	4.36	4.85	5.61	6.08	7.20	17.70	1.83	4.98
2015	4.02	4.23	4.95	6.33	7.27	6.40	14.75	2.58	4.92
2016	4.92	4.42	5.06	5.93	6.49	7.92	20.82	3.30	5.27
2017	4.77	4.43	5.01	4.85	6.81	5.38	16.26	2.50	5.05
<i>Latest per cent change</i>	-3.0	0.1	-1.0	-18.3	5.0	-32.1	-21.9	-24.3	-4.1
<i>Average trend change per year (per cent)</i>	1.1	-0.9	-4.5	-2.5	-1.2	-2.6	-2.6	-0.5	-1.4

Table 3.2 Calendar year period

Calendar year	<i>NSW</i>	<i>Vic</i>	<i>Qld</i>	<i>SA</i>	<i>WA</i>	<i>Tas</i>	<i>NT</i>	<i>ACT</i>	<i>Australia</i>
2012	5.05	5.01	6.13	5.68	7.51	6.05	20.77	3.20	5.72
2013	4.50	4.24	5.83	5.87	6.44	7.02	15.25	1.84	5.13
2014	4.09	4.25	4.72	6.35	7.16	6.41	16.03	2.60	4.90
2015	4.59	4.24	5.09	6.00	6.18	6.58	20.03	3.83	5.06
2016	4.93	4.79	5.18	5.03	7.37	7.13	18.35	2.27	5.36
<i>Latest per cent change</i>	7.4	13.1	1.9	-16.1	19.4	8.3	-8.4	-40.8	5.8

4. Monthly deaths by jurisdiction — last 24 months

— raw
 - - - smoothed
 (13-point moving average)

Figure 4.1 NSW

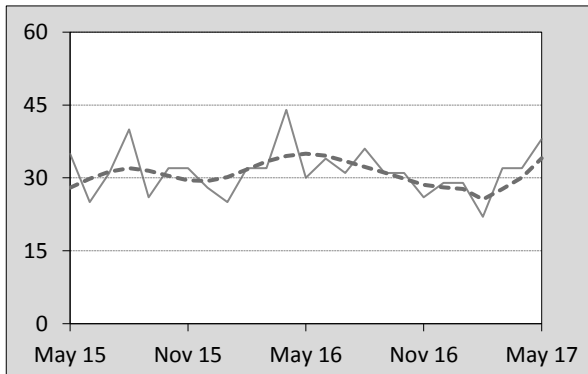


Figure 4.2 Vic

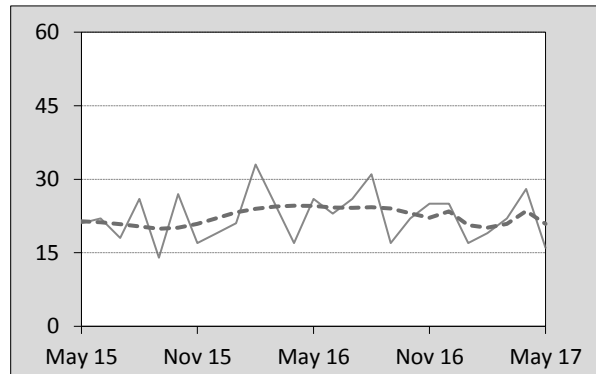


Figure 4.3 Qld

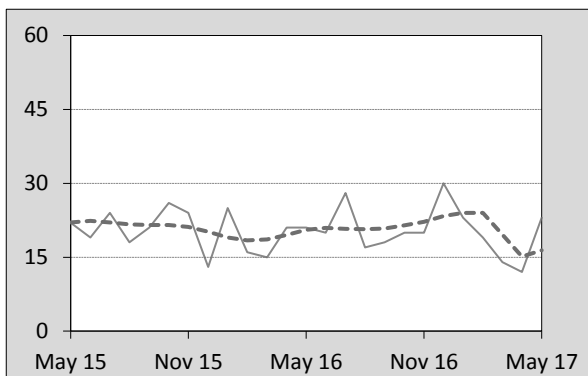


Figure 4.4 SA

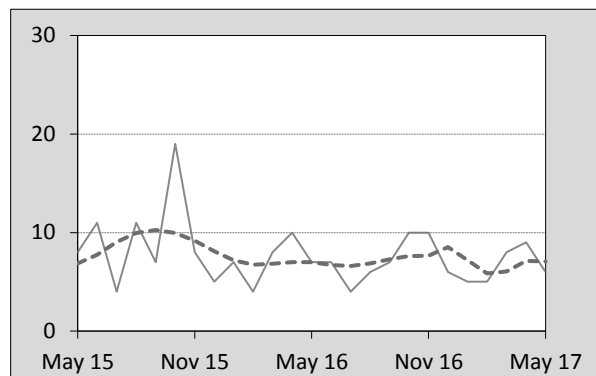


Figure 4.5 WA

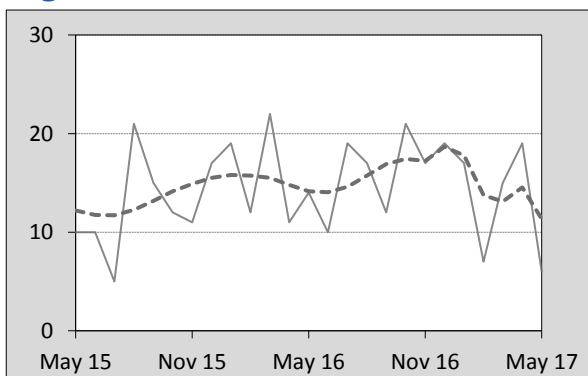


Figure 4.6 Tas

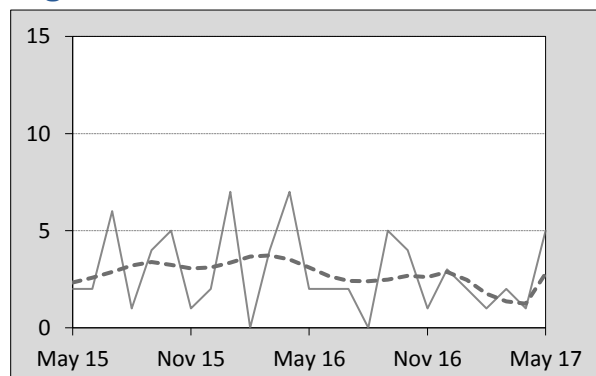


Figure 4.7 NT

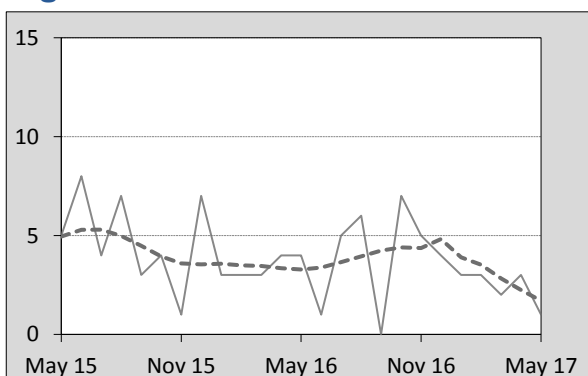
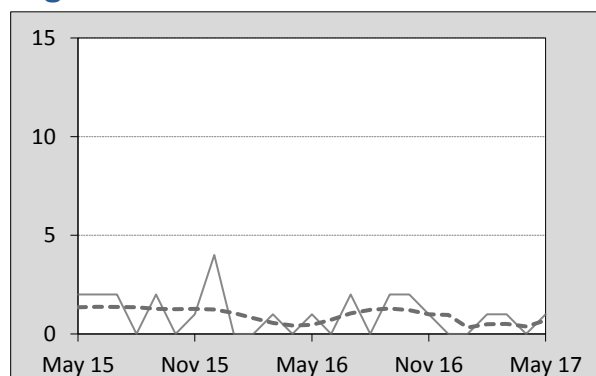


Figure 4.8 ACT



5. Fatal crashes: counts and characteristics

Table 5.1 By Crash type and Posted speed limit

12 months ended May	Crash type ^a			Posted speed limit						Total ^b
	Single	Multiple	Pedestrian	40	50	60	70 to 90	100	≥ 110	
2013	553	463	153	19	134	220	264	369	150	1,169
2014	452	452	162	11	122	188	243	359	128	1,066
2015	485	426	147	17	114	203	223	346	140	1,058
2016	512	483	160	11	131	221	264	357	160	1,155
2017	516	478	152	15	120	187	277	368	139	1,146
Latest per cent change	0.8	-1.0	-5.0	36.4	-8.4	-15.4	4.9	3.1	-13.1	-0.8
Average trend change per year (per cent)	-0.1	1.3	-0.3	-4.6	-1.5	-1.6	1.8	-0.1	0.7	0.4

Table 5.2 By Day of week and Time of day

12 months ended May	Day of week ^c		Time of Day ^d	
	Weekday	Weekend	Day	Night
2013	719	450	719	450
2014	648	418	679	387
2015	637	421	665	393
2016	735	420	723	432
2017	703	443	690	456
Latest per cent change	-4.4	5.5	-4.6	5.6
Average trend change per year (per cent)	0.8	-0.3	-0.2	1.4

a 'Single' and 'Multiple' refer to the number of vehicles involved in a fatal crash where there is no pedestrian killed.

b Includes crashes where speed limit is unknown or where the posted speed limit is 30km/hr or less.

c 'Weekday' refers to 6am Monday through to 5:59pm Friday.

d 'Day' refers to 6am through to 5:59 pm.

Appendix

Definition

The road safety agencies in each jurisdiction use detailed criteria to define road crashes and road deaths. Briefly, a death is classified as resulting from a road crash if the crash occurred on a public road, is unintentional and the death occurred within 30 days from injuries sustained in the crash.

Population rates

Rates per population are based on the deaths to the current 12-month period, and the population at the midpoint of the period. The population at midpoints is interpolated if necessary.

Average trend change (% per year)

Calculated by fitting an exponential curve through the five data points, and quoting the constant (annual) change of this curve.

Other sources for the tables in this bulletin

The underlying database used to produce this bulletin — *the Australian Road Deaths Database* is available for data extraction at <http://www.bitre.gov.au/statistics/safety/fatal_road_crash_database.aspx>.

Road deaths from recent months are preliminary and subject to revision.