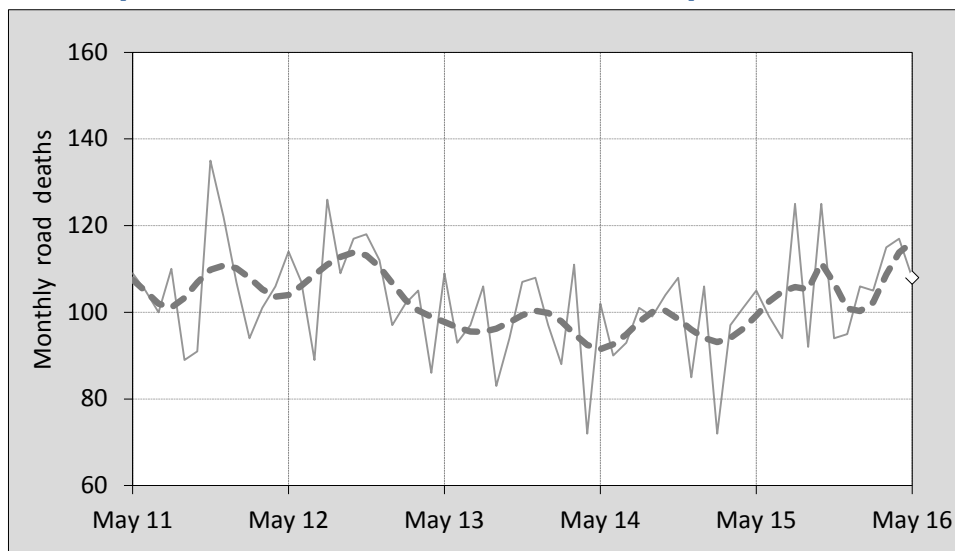




This month's key figures

- There was a total of 108 road deaths during the month of May 2016. In comparison to the average for May over the previous five years, the current figure is 0.2 per cent higher.
- During the 12 months ended May, there were 1,275 road deaths. This is a 9.8 per cent increase compared to the total for the 12-month period ended May 2015.
- Presently, the rate of annual deaths per 100,000 population stands at 5.3. Compared to the figure for the 12-month period ending May 2015, this is an 8.4 per cent increase.

Monthly Australian road deaths — last five years, with trend



Data Sources

Data are obtained from

- Transport for NSW
- Vicroads
- Department of Transport and Main Roads, Queensland
- Department of Planning, Transport and Infrastructure, S.A.
- Western Australia Police
- Department of State Growth, Tasmania
- Department of Transport, Northern Territory
- Territory and Municipal Services Directorate, ACT
- Australian Bureau of Statistics (3101.0)

Inquiries

For further information about data in this bulletin, contact:

Bureau of Infrastructure, Transport and
Regional Economics
Web : www.bitre.gov.au
Email : roadsafety@infrastructure.gov.au

Road deaths from recent months are preliminary and subject to revision.

© Copyright. Commonwealth of Australia

1. Deaths by jurisdiction

Table 1.1 Current month

Current month	NSW	Vic	Qld	SA	WA	Tas	NT	ACT	Australia
May 2015	35	21	22	8	10	2	5	2	105
May 2016	31	26	21	9	14	2	4	1	108
Per cent change	-11.4	23.8	-4.5	12.5	40.0	0.0	-20.0	-50.0	2.9

Table 1.2 Year to date

Year to date	NSW	Vic	Qld	SA	WA	Tas	NT	ACT	Australia
January 2015 - May 2015	136	109	98	37	69	13	15	4	481
January 2016 - May 2016	170	126	97	40	78	20	17	3	551
Per cent change	25.0	15.6	-1.0	8.1	13.0	53.8	13.3	-25.0	14.6

Table 1.3 Year ending May

12 months ended May	NSW	Vic	Qld	SA	WA	Tas	NT	ACT	Australia
2012	379	271	277	93	177	23	51	3	1,274
2013	343	264	297	94	185	33	48	13	1,277
2014	344	252	227	94	154	37	43	7	1,158
2015	304	249	235	107	187	33	36	10	1,161
2016	384	269	242	105	169	41	51	14	1,275
Latest per cent change	26.3	8.0	3.0	-1.9	-9.6	24.2	41.7	40.0	9.8
Average trend change per year (per cent)	-0.9	-0.7	-4.9	3.8	-0.8	12.3	-2.8	32.6	-0.9

2. Deaths by road user, age-group and gender

Table 2.1 By road user

12 months ended May	Driver	Passenger	Pedestrian	Motorcyclist ^b	Pedal ^b cyclist	Total ^c
2012	565	271	195	206	35	1,274
2013	624	242	154	215	35	1,277
2014	524	221	163	187	61	1,158
2015	542	235	150	203	28	1,161
2016	606	234	168	228	37	1,275
Latest per cent change	11.8	-0.4	12.0	12.3	32.1	9.8
Average trend change per year (per cent)	0.0	-3.2	-3.2	1.5	-1.1	-0.9

Table 2.2 By age-group^a (years)

12 months ended May	0 to 16	17 to 25	26 to 39	40 to 64	65 to 74	≥ 75	Total ^c
2012	94	277	308	371	83	141	1,274
2013	68	278	276	408	106	140	1,277
2014	60	213	248	366	117	154	1,158
2015	72	245	249	348	104	140	1,161
2016	61	231	277	410	121	174	1,275
Latest per cent change	-15.3	-5.7	11.2	17.8	16.3	24.3	9.8
Average trend change per year (per cent)	-7.8	-4.8	-3.1	0.4	7.6	4.3	-0.9

2. Deaths by road user, age-group and gender (continued)

Table 2.3 By gender

12 months ended May	<i>Males</i>	<i>Females</i>	<i>Total^d</i>
2012	916	357	1,274
2013	903	373	1,277
2014	844	313	1,158
2015	813	348	1,161
2016	930	345	1,275
<i>Latest per cent change</i>	14.4	-0.9	9.8
<i>Average trend change per year (per cent)</i>	-0.7	-1.4	-0.9

a Age groups were changed in March 2014.

b Includes pillion passengers.

c Includes deaths to persons with either age or road user type not recorded.

d Includes deaths to persons with gender not recorded.

3. Annual deaths per 100,000 population

Table 3.1 Year ended May

12 months ended May	<i>NSW</i>	<i>Vic</i>	<i>Qld</i>	<i>SA</i>	<i>WA</i>	<i>Tas</i>	<i>NT</i>	<i>ACT</i>	<i>Australia</i>
2012	5.22	4.86	6.14	5.65	7.42	4.49	21.92	0.81	5.66
2013	4.67	4.65	6.45	5.66	7.48	6.44	20.10	3.44	5.58
2014	4.62	4.36	4.85	5.61	6.08	7.20	17.70	1.83	4.98
2015	4.02	4.23	4.95	6.33	7.27	6.40	14.76	2.58	4.92
2016	5.01	4.49	5.04	6.17	6.49	7.92	20.85	3.56	5.33
<i>Latest per cent change</i>	24.7	6.2	1.8	-2.6	-10.7	23.7	41.2	38.0	8.4
<i>Average trend change per year (per cent)</i>	-2.3	-2.5	-6.4	2.9	-2.9	11.9	-4.0	30.7	-2.4

Table 3.2 Calendar year period

Calendar year	<i>NSW</i>	<i>Vic</i>	<i>Qld</i>	<i>SA</i>	<i>WA</i>	<i>Tas</i>	<i>NT</i>	<i>ACT</i>	<i>Australia</i>
2011	5.04	5.18	6.01	6.28	7.61	4.69	19.46	1.63	5.72
2012	5.05	5.01	6.13	5.68	7.51	6.05	20.77	3.20	5.72
2013	4.50	4.24	5.83	5.87	6.44	7.02	15.25	1.84	5.13
2014	4.09	4.25	4.72	6.35	7.16	6.41	16.03	2.60	4.90
2015	4.59	4.24	5.08	6.00	6.18	6.58	20.06	3.84	5.07
<i>Latest per cent change</i>	12.4	-0.1	7.6	-5.4	-13.7	2.7	25.2	47.9	3.4

4. Monthly deaths by jurisdiction — last 24 months

— raw
 - - - smoothed
 (13-point moving average)

Figure 4.1 NSW

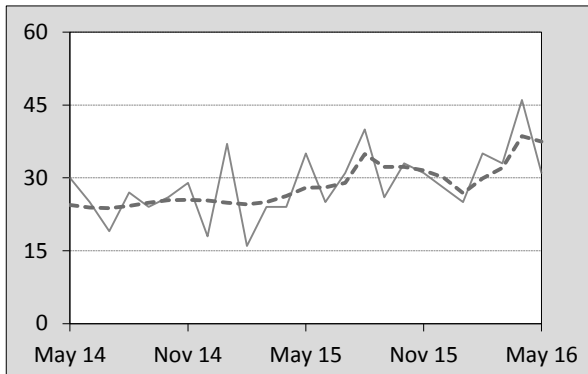


Figure 4.2 Vic

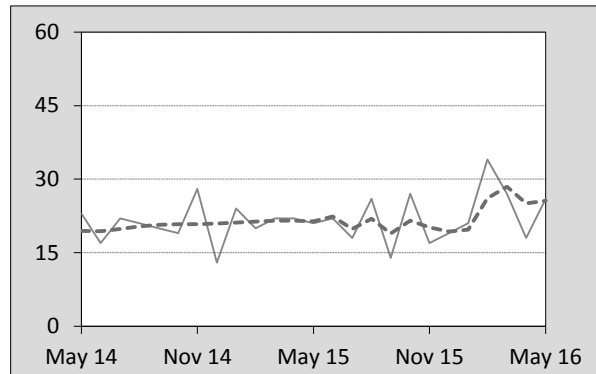


Figure 4.3 Qld

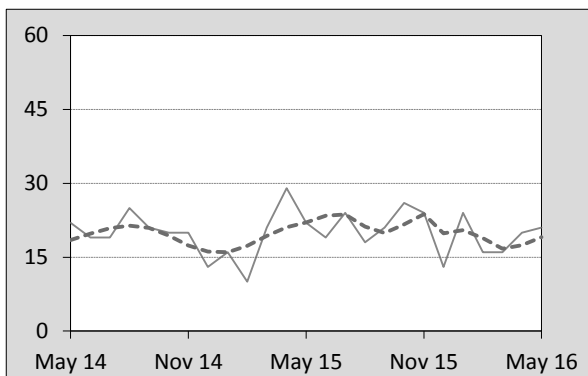


Figure 4.4 SA

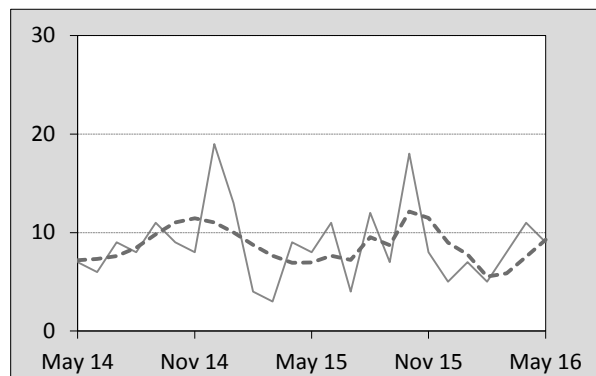


Figure 4.5 WA

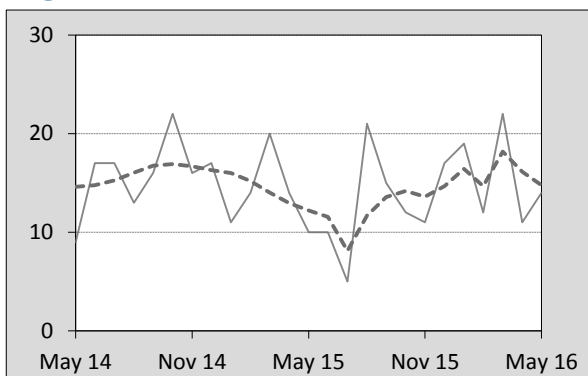


Figure 4.6 Tas

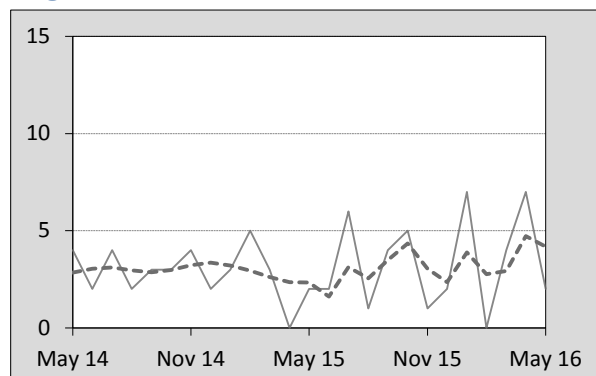


Figure 4.7 NT

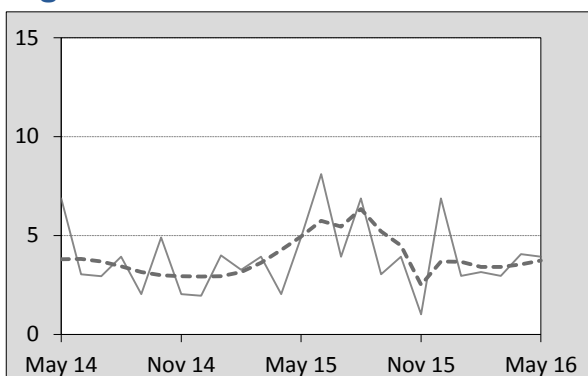
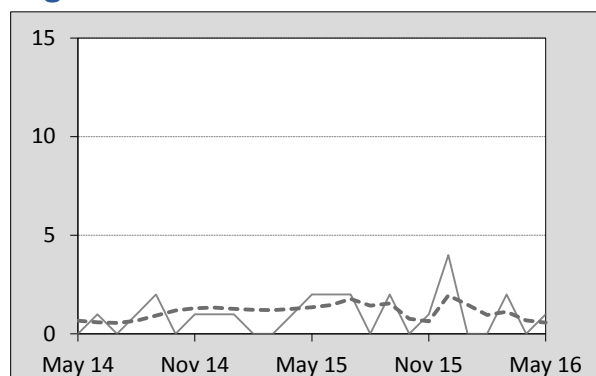


Figure 4.8 ACT



5. Fatal crashes: counts and characteristics

Table 5.1 By Crash type and Posted speed limit

12 months ended May	Crash type ^a			Posted speed limit				Total ^b
	Single	Multiple	Pedestrian	0 to 60	70 to 90	100	≥ 110	
2012	499	466	191	389	253	371	130	1,156
2013	553	463	153	376	264	369	150	1,169
2014	452	452	162	324	243	359	128	1,066
2015	485	425	148	338	224	345	140	1,058
2016	523	485	162	363	258	353	161	1,170
Latest per cent change	7.8	14.1	9.5	7.4	15.2	2.3	15.0	10.6
Average trend change per year (per cent)	-0.4	-0.1	-3.6	-2.4	-1.2	-1.7	3.7	-0.8

Table 5.2 By Day of week and Time of day

12 months ended May	Day of week ^c		Time of Day ^d	
	Weekday	Weekend	Day	Night
2012	701	455	729	427
2013	719	450	719	450
2014	648	418	679	387
2015	637	421	665	393
2016	741	429	731	439
Latest per cent change	16.3	1.9	9.9	11.7
Average trend change per year (per cent)	-0.1	-1.8	-0.7	-0.8

a 'Single' and 'Multiple' refer to the number of vehicles involved in a fatal crash where there is no pedestrian killed.

b Includes crashes where speed limit is unknown.

c 'Weekday' refers to 6am Monday through to 5:59pm Friday.

d 'Day' refers to 6am through to 5:59 pm.

Appendix

Definition

The road safety agencies in each jurisdiction use detailed criteria to define road crashes and road deaths. Briefly, a death is classified as resulting from a road crash if the crash occurred on a public road, is unintentional and the death occurred within 30 days from injuries sustained in the crash.

Population rates

Rates per population are based on the deaths to the current 12-month period, and the population at the midpoint of the period. The population at midpoints is interpolated if necessary.

Average trend change (% per year)

Calculated by fitting an exponential curve through the five data points, and quoting the constant (annual) change of this curve.

Other sources for the tables in this bulletin

The underlying database used to produce this bulletin — the *Australian Road Deaths Database* is available for data extraction at <http://www.bitre.gov.au/statistics/safety/fatal_road_crash_database.aspx>.

Road deaths from recent months are preliminary and subject to revision.