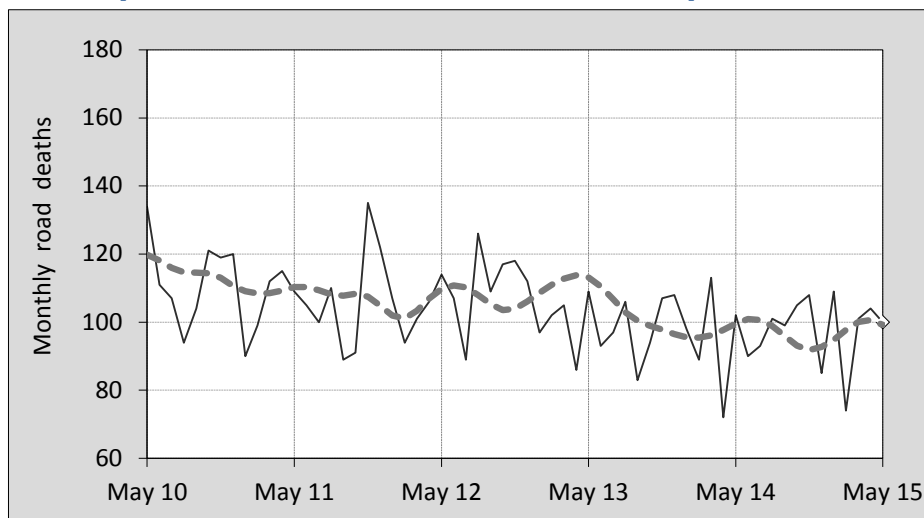




This month's key figures

- There was a total of 100 road deaths during the month of May 2015. In comparison to the average for May over the previous five years, the current figure is 12.0 per cent lower.
- During the 12 months ended May there were 1,169 road deaths. This is a 0.6 per cent increase compared to the total for the 12-monthly period ended May 2014.
- Presently the rate of annual deaths per 100,000 population stands at 4.9. Compared to the figure for the 12-monthly period ending May 2014, this is a 0.9 per cent reduction.

Monthly Australian road deaths — last five years, with trend



Data Sources

Data are obtained from

- Transport for NSW
- Vicroads
- Department of Transport and Main Roads, Queensland
- Department of Planning, Transport and Infrastructure, S.A.
- Western Australia Police
- Department of State Growth, Tasmania
- Department of Transport, Northern Territory
- Territory and Municipal Services Directorate, ACT
- Australian Bureau of Statistics (3101.0)

Inquiries

For further information about data in this bulletin, contact:

Bureau of Infrastructure, Transport and
Regional Economics
Web : www.bitre.gov.au
Email : roadsafety@infrastructure.gov.au

Road deaths from recent months are preliminary and subject to revision.

© Copyright. Commonwealth of Australia

I. Deaths by jurisdiction

Table I.1 Current month

Current month	NSW	Vic	Qld	SA	WA	Tas	NT	ACT	Australia
May 2014	30	23	22	7	9	4	7	0	102
May 2015	31	21	21	8	10	2	5	2	100
Per cent change	3.3	-8.7	-4.5	14.3	11.1	-50.0	-28.6	-	-2.0

Table I.2 Year to date

Year to date	NSW	Vic	Qld	SA	WA	Tas	NT	ACT	Australia
January 2014 - May 2014	139	108	86	37	67	15	18	4	474
January 2015 - May 2015	140	112	98	36	69	13	15	5	488
Per cent change	0.7	3.7	14.0	-2.7	3.0	-13.3	-16.7	25.0	3.0

Table I.3 Year ending May

12 months ended May	NSW	Vic	Qld	SA	WA	Tas	NT	ACT	Australia
2011	361	296	261	108	195	26	43	11	1,301
2012	379	271	277	93	177	23	51	3	1,274
2013	343	264	297	94	185	33	48	13	1,277
2014	344	252	227	94	156	39	43	7	1,162
2015	312	253	235	106	183	33	36	11	1,169
Latest per cent change	-9.3	0.4	3.5	12.8	17.3	-15.4	-16.3	57.1	0.6
Average trend change per year (per cent)	-3.8	-3.8	-4.0	-0.3	-2.5	10.6	-5.1	8.8	-3.0

2. Deaths by road user, age-group and gender

Table 2.1 By road user

12 months ended May	Driver	Passenger	Pedestrian	Motorcyclist ^b	Pedal ^b cyclist	Total ^c
2011	601	282	166	224	28	1,301
2012	565	271	195	206	35	1,274
2013	624	242	154	215	35	1,277
2014	527	222	163	187	61	1,162
2015	543	235	152	206	30	1,169
Latest per cent change	3.0	5.9	-6.7	10.2	-50.8	0.6
Average trend change per year (per cent)	-2.7	-5.5	-3.5	-2.6	7.2	-3.0

Table 2.2 By age-group^a (years)

12 months ended May	0 to 16	17 to 25	26 to 39	40 to 64	65 to 74	≥ 75	Total ^c
2011	70	319	280	414	86	132	1,301
2012	94	277	308	371	83	141	1,274
2013	68	278	276	408	106	140	1,277
2014	60	213	249	368	117	155	1,162
2015	74	242	251	357	103	138	1,169
Latest per cent change	23.3	13.6	0.8	-3.0	-12.0	-11.0	0.6
Average trend change per year (per cent)	-3.3	-7.8	-4.2	-3.0	7.3	1.9	-3.0

2. Deaths by road user, age-group and gender (continued)

Table 2.3 By gender

12 months ended May	<i>Males</i>	<i>Females</i>	<i>Total^d</i>
2011	947	353	1,301
2012	916	357	1,274
2013	903	373	1,277
2014	847	314	1,162
2015	826	343	1,169
<i>Latest per cent change</i>	-2.5	9.2	0.6
<i>Average trend change per year (per cent)</i>	-3.5	-1.8	-3.0

a Age groups were changed in March 2014.

b Includes pillion passengers

c Includes deaths to persons with either age or road user type not recorded.

d Includes deaths to persons with gender not recorded.

3. Annual deaths per 100,000 population

Table 3.1 Year ended May

12 months ended May	<i>NSW</i>	<i>Vic</i>	<i>Qld</i>	<i>SA</i>	<i>WA</i>	<i>Tas</i>	<i>NT</i>	<i>ACT</i>	<i>Australia</i>
2011	5.03	5.39	5.89	6.62	8.43	5.10	18.67	3.02	5.87
2012	5.22	4.86	6.14	5.65	7.42	4.49	21.92	0.81	5.66
2013	4.67	4.65	6.45	5.66	7.48	6.44	20.10	3.44	5.58
2014	4.61	4.36	4.85	5.61	6.13	7.59	17.64	1.83	4.99
2015	4.13	4.30	4.94	6.27	7.04	6.41	14.57	2.84	4.94
<i>Latest per cent change</i>	-10.6	-1.4	2.0	11.8	14.8	-15.6	-17.4	55.4	-0.9
<i>Average trend change per year (per cent)</i>	-5.1	-5.5	-5.7	-1.2	-5.4	10.3	-6.9	7.1	-4.6

Table 3.2 Calendar year period

Calendar year	<i>NSW</i>	<i>Vic</i>	<i>Qld</i>	<i>SA</i>	<i>WA</i>	<i>Tas</i>	<i>NT</i>	<i>ACT</i>	<i>Australia</i>
2010	5.67	5.27	5.65	7.25	8.42	6.09	21.76	5.25	6.14
2011	5.04	5.18	6.01	6.28	7.61	4.69	19.46	1.63	5.72
2012	5.05	5.01	6.13	5.68	7.51	6.05	20.77	3.20	5.72
2013	4.49	4.24	5.83	5.87	6.43	7.02	15.26	1.84	5.13
2014	4.14	4.26	4.72	6.35	7.03	6.80	15.91	2.59	4.92
<i>Latest per cent change</i>	-8.0	0.6	-18.9	8.2	9.4	-3.1	4.3	41.1	-4.2

4. Monthly deaths by jurisdiction — last 24 months

— raw
 - - - smoothed
 (unweighted 5-point moving average)

Figure 4.1 NSW

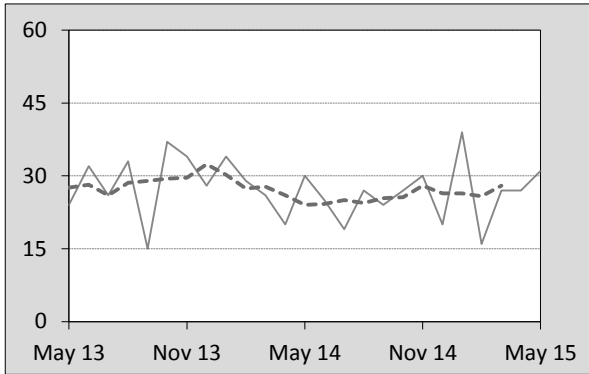


Figure 4.2 Vic

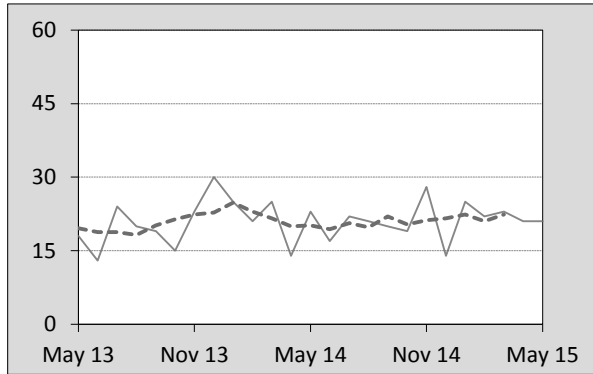


Figure 4.3 Qld

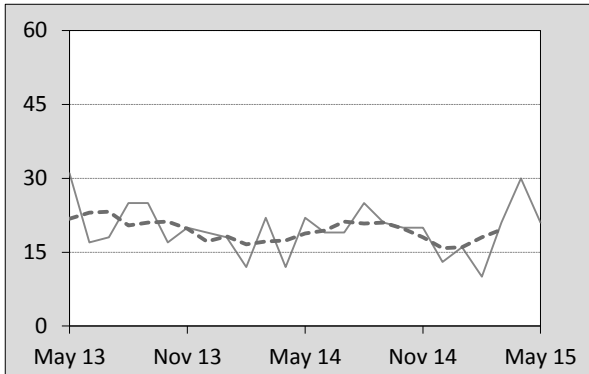


Figure 4.4 SA

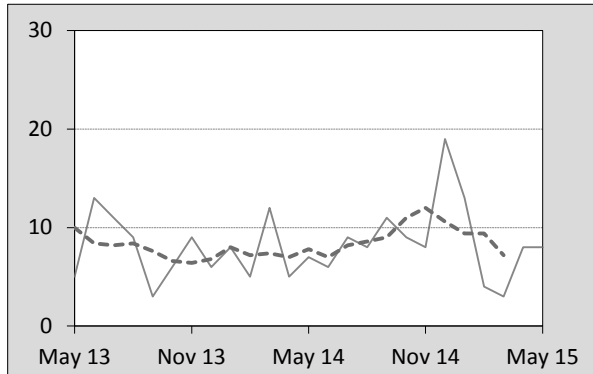


Figure 4.5 WA

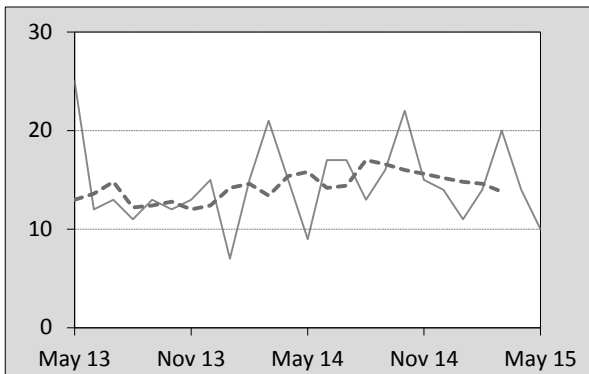


Figure 4.6 Tas

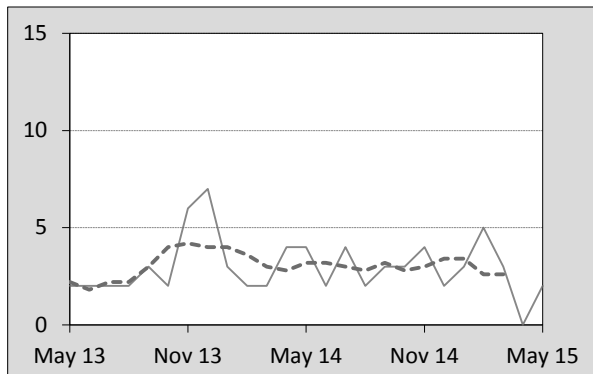


Figure 4.7 NT

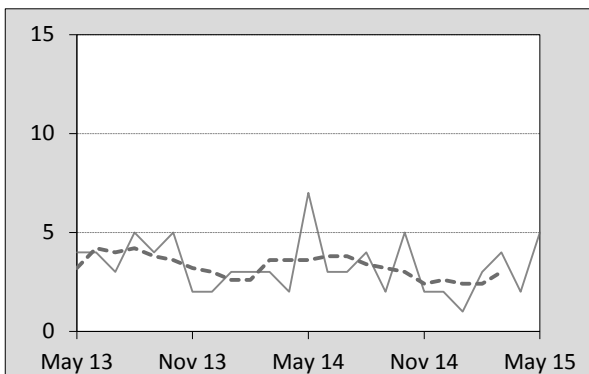
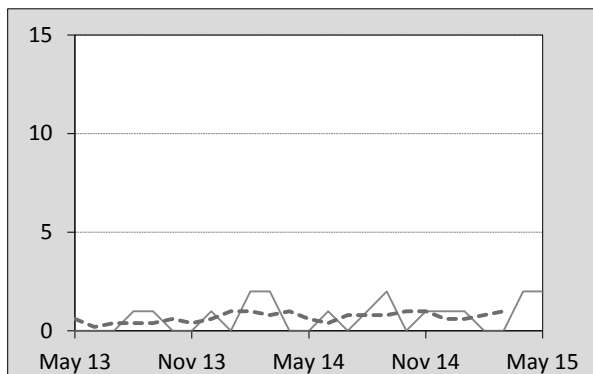


Figure 4.8 ACT



5. Fatal crashes: counts and characteristics

Table 5.1 By Crash type and Posted speed limit

12 months ended May	Crash type ^a			Posted speed limit				Total ^b
	Single	Multiple	Pedestrian	0 to 60	70 to 90	100	≥ 110	
2011	532	497	164	335	276	413	163	1,193
2012	499	466	191	389	253	371	130	1,156
2013	553	463	153	376	264	369	150	1,169
2014	456	452	162	324	245	360	129	1,070
2015	492	424	150	343	221	338	135	1,066
Latest per cent change	7.9	-6.2	-7.4	5.9	-9.8	-6.1	4.7	-0.4
Average trend change per year (per cent)	-2.4	-3.4	-3.4	-1.3	-4.7	-4.2	-3.8	-3.0

Table 5.2 By Day of week and Time of day

12 months ended May	Day of week ^c		Time of Day ^d	
	Weekday	Weekend	Day	Night
2011	687	506	692	501
2012	701	455	729	427
2013	719	450	719	450
2014	650	420	683	387
2015	643	423	668	398
Latest per cent change	-1.1	0.7	-2.2	2.8
Average trend change per year (per cent)	-2.1	-4.3	-1.3	-5.4

a 'Single' and 'Multiple' refer to the number of vehicles involved in a fatal crash where there is no pedestrian killed.

b Includes crashes where speed limit is unknown

c 'Weekday' refers to 6am Monday through to 5:59pm Friday.

d 'Day' refers to 6am through to 5:59 pm.

Appendix

Definition

The road safety agencies in each jurisdiction use detailed criteria to define road crashes and road deaths. Briefly, a death is classified as resulting from a road crash if the crash occurred on a public road, is unintentional and the death occurred within 30 days from injuries sustained in the crash.

Population rates

Rates per population are based on the deaths to the current 12 monthly period, and the population at the midpoint of the period. The population at midpoints are interpolated if necessary.

Average trend change (% per year)

Calculated by fitting an exponential curve through the five data points, and quoting the constant (annual) change of this curve.

Other sources for the tables in this bulletin

The underlying database used to produce this bulletin — *the Australian Road Deaths Database* is available for data extraction at <http://www.bitre.gov.au/statistics/safety/fatal_road_crash_database.aspx>.

Road deaths from recent months are preliminary and subject to revision.