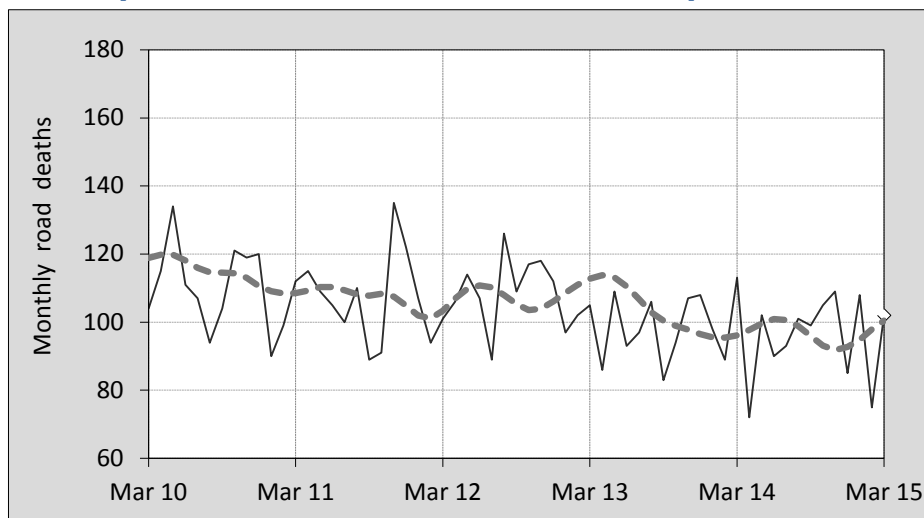




This month's key figures

- There was a total of 102 road deaths during the month of March 2015. In comparison to the average for March over the previous five years, the current figure is 4.7 per cent lower.
- During the 12 months ended March there were 1,141 road deaths. This is a 3.6 per cent reduction compared to the total for the 12-monthly period ended March 2014.
- Presently the rate of annual deaths per 100,000 population stands at 4.8. Compared to the figure for the 12-monthly period ending March 2014, this is a 5.0 per cent reduction.

Monthly Australian road deaths — last five years, with trend



Data Sources

Data are obtained from

- Transport for NSW
- Vicroads
- Department of Transport and Main Roads, Queensland
- Department of Planning, Transport and Infrastructure, S.A.
- Western Australia Police
- Department of State Growth, Tasmania
- Department of Transport, Northern Territory
- Territory and Municipal Services Directorate, ACT
- Australian Bureau of Statistics (3101.0)

Inquiries

For further information about data in this bulletin, contact:

Bureau of Infrastructure, Transport and
Regional Economics
Web : www.bitre.gov.au
Email : roadsafety@infrastructure.gov.au

Road deaths from recent months are preliminary and subject to revision.

© Copyright. Commonwealth of Australia

I. Deaths by jurisdiction

Table 1.1 Current month

Current month	NSW	Vic	Qld	SA	WA	Tas	NT	ACT	Australia
March 2014	26	25	22	12	21	2	3	2	113
March 2015	28	25	20	3	19	3	4	0	102
Per cent change	7.7	0.0	-9.1	-75.0	-9.5	50.0	33.3	-100.0	-9.7

Table 1.2 Year to date

Year to date	NSW	Vic	Qld	SA	WA	Tas	NT	ACT	Australia
January 2014 - March 2014	89	71	52	25	43	7	9	4	300
January 2015 - March 2015	83	72	47	20	43	11	8	1	285
Per cent change	-6.7	1.4	-9.6	-20.0	0.0	57.1	-11.1	-75.0	-5.0

Table 1.3 Year ending March

12 months ended March	NSW	Vic	Qld	SA	WA	Tas	NT	ACT	Australia
2011	391	286	254	106	201	28	43	17	1,326
2012	365	290	270	100	181	23	49	0	1,278
2013	357	269	298	101	181	34	46	16	1,302
2014	344	252	248	91	164	34	43	7	1,183
2015	306	250	218	102	181	39	38	7	1,141
Latest per cent change	-11.0	-0.8	-12.1	12.1	10.4	14.7	-11.6	0.0	-3.6
Average trend change per year (per cent)	-5.3	-4.0	-3.8	-1.7	-3.0	11.1	-3.7	-	-3.7

2. Deaths by road user, age-group and gender

Table 2.1 By road user

12 months ended March	Driver	Passenger	Pedestrian	Motorcyclist ^b	Pedal ^b cyclist	Total ^c
2011	619	280	167	228	32	1,326
2012	569	288	184	202	33	1,278
2013	628	249	160	222	39	1,302
2014	544	214	166	202	52	1,183
2015	526	220	155	198	39	1,141
Latest per cent change	-3.3	2.8	-6.6	-2.0	-25.0	-3.6
Average trend change per year (per cent)	-3.6	-2.8	-2.8	-2.8	8.9	-3.7

Table 2.2 By age-group^a (years)

12 months ended March	0 to 16	17 to 25	26 to 39	40 to 64	65 to 74	≥ 75	Total ^c
2011	69	323	295	415	99	125	1,326
2012	94	290	305	374	81	134	1,278
2013	74	288	286	409	100	144	1,302
2014	62	212	242	387	118	162	1,183
2015	67	223	251	353	110	134	1,141
Latest per cent change	8.1	5.2	3.7	-8.8	-6.8	-17.3	-3.6
Average trend change per year (per cent)	-4.6	-10.0	-5.4	-2.9	6.0	3.3	-3.7

2. Deaths by road user, age-group and gender (continued)

Table 2.3 By gender

12 months ended March	<i>Males</i>	<i>Females</i>	<i>Total^d</i>
2011	960	365	1,326
2012	930	346	1,278
2013	916	385	1,302
2014	860	323	1,183
2015	812	325	1,141
<i>Latest per cent change</i>	-5.6	0.6	-3.6
<i>Average trend change per year (per cent)</i>	-4.0	-3.0	-3.7

a Age groups were changed in March 2014.

b Includes pillion passengers

c Includes deaths to persons with either age or road ruser type not recorded.

d Includes deaths to persons with gender not recorded.

3. Annual deaths per 100,000 population

Table 3.1 Year ended March

12 months ended March	<i>NSW</i>	<i>Vic</i>	<i>Qld</i>	<i>SA</i>	<i>WA</i>	<i>Tas</i>	<i>NT</i>	<i>ACT</i>	<i>Australia</i>
2011	5.46	5.22	5.74	6.50	8.72	5.50	18.66	4.69	6.00
2012	5.04	5.22	6.00	6.09	7.63	4.49	21.07	0.00	5.70
2013	4.87	4.76	6.49	6.09	7.36	6.64	19.34	4.24	5.70
2014	4.62	4.37	5.31	5.43	6.47	6.62	17.66	1.83	5.09
2015	4.06	4.26	4.60	6.04	6.99	7.57	15.43	1.81	4.84
<i>Latest per cent change</i>	-12.3	-2.5	-13.4	11.1	8.1	14.3	-12.6	-1.1	-5.0
<i>Average trend change per year (per cent)</i>	-6.6	-5.7	-5.5	-2.6	-5.9	10.8	-5.4	-	-5.3

Table 3.2 Calendar year period

Calendar year	<i>NSW</i>	<i>Vic</i>	<i>Qld</i>	<i>SA</i>	<i>WA</i>	<i>Tas</i>	<i>NT</i>	<i>ACT</i>	<i>Australia</i>
2010	5.67	5.27	5.65	7.25	8.42	6.09	21.76	5.25	6.14
2011	5.04	5.18	6.01	6.28	7.61	4.69	19.46	1.63	5.72
2012	5.05	5.01	6.13	5.68	7.51	6.05	20.77	3.20	5.72
2013	4.49	4.24	5.83	5.87	6.43	7.02	15.26	1.84	5.13
2014	4.15	4.26	4.72	6.35	7.03	6.80	15.91	2.59	4.92
<i>Latest per cent change</i>	-7.7	0.6	-18.9	8.2	9.4	-3.1	4.3	41.1	-4.1

4. Monthly deaths by jurisdiction — last 24 months

— raw
 - - - smoothed
 (unweighted 5-point moving average)

Figure 4.1 NSW

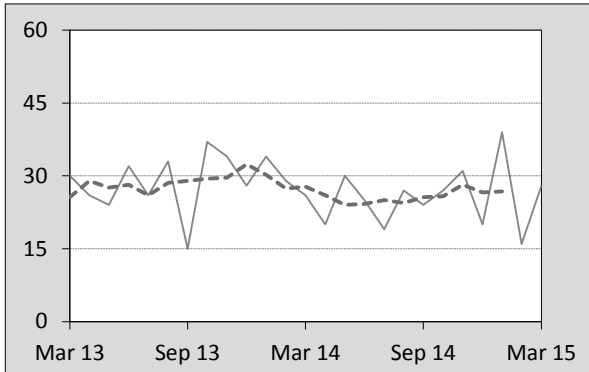


Figure 4.2 Vic

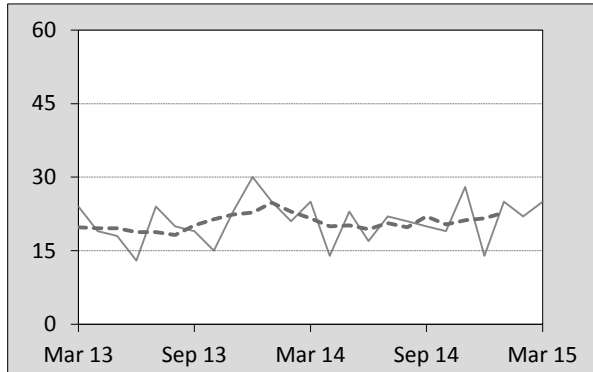


Figure 4.3 Qld

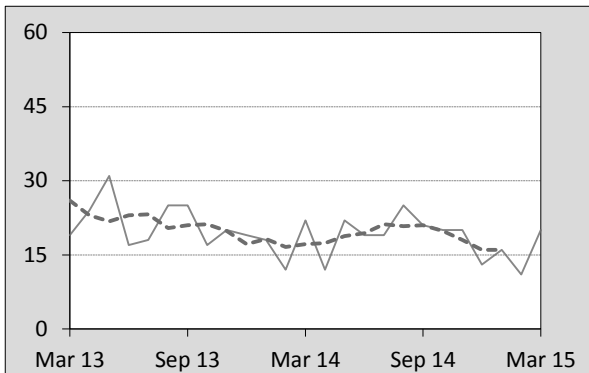


Figure 4.4 SA

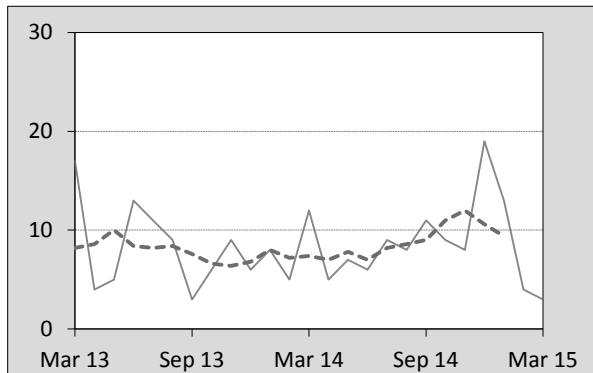


Figure 4.5 WA

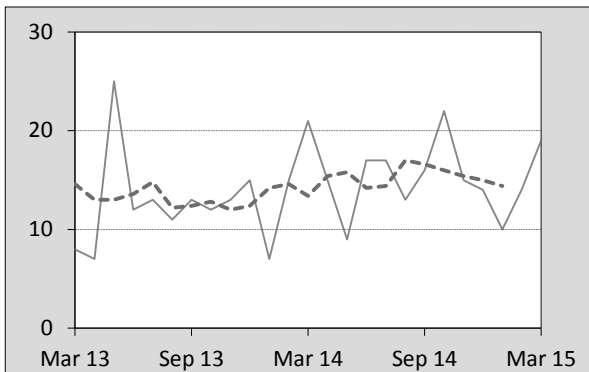


Figure 4.6 Tas

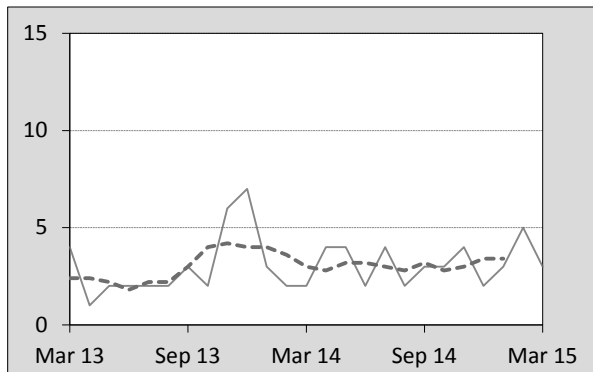


Figure 4.7 NT

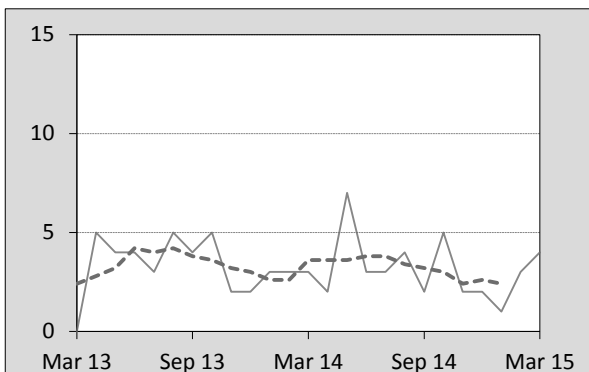
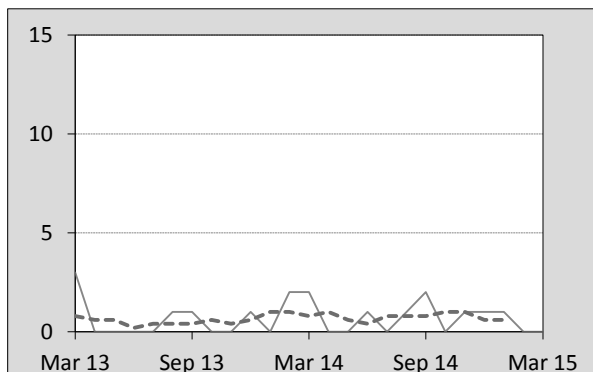


Figure 4.8 ACT



5. Fatal crashes: counts and characteristics

Table 5.1 By Crash type and Posted speed limit

12 months ended March	Crash type ^a			Posted speed limit				Total ^b
	Single	Multiple	Pedestrian	0 to 60	70 to 90	100	≥ 110	
2011	534	518	165	355	283	409	165	1,217
2012	519	457	180	351	245	403	145	1,156
2013	544	490	160	402	279	356	144	1,194
2014	489	440	164	340	244	371	126	1,093
2015	456	431	153	326	211	335	134	1,040
Latest per cent change	-6.7	-2.0	-6.7	-4.1	-13.5	-9.7	6.3	-4.8
Average trend change per year (per cent)	-3.7	-4.0	-2.4	-2.0	-5.7	-4.7	-5.4	-3.6

Table 5.2 By Day of week and Time of day

12 months ended March	Day of week ^c		Time of Day ^d	
	Weekday	Weekend	Day	Night
2011	708	509	716	501
2012	675	481	708	448
2013	738	456	742	452
2014	666	427	696	397
2015	645	395	659	381
Latest per cent change	-3.2	-7.5	-5.3	-4.0
Average trend change per year (per cent)	-2.0	-6.1	-1.8	-6.5

a 'Single' and 'Multiple' refer to the number of vehicles involved in a fatal crash where there is no pedestrian killed.

b Includes crashes where speed limit is unknown

c 'Weekday' refers to 6am Monday through to 5:59pm Friday.

d 'Day' refers to 6am through to 5:59 pm.

Appendix

Definition

The road safety agencies in each jurisdiction use detailed criteria to define road crashes and road deaths. Briefly, a death is classified as resulting from a road crash if the crash occurred on a public road, is unintentional and the death occurred within 30 days from injuries sustained in the crash.

Population rates

Rates per population are based on the deaths to the current 12 monthly period, and the population at the midpoint of the period. The population at midpoints are interpolated if necessary.

Average trend change (% per year)

Calculated by fitting an exponential curve through the five data points, and quoting the constant (annual) change of this curve.

Other sources for the tables in this bulletin

The underlying database used to produce this bulletin — *the Australian Road Deaths Database* is available for data extraction at <http://www.bitre.gov.au/statistics/safety/fatal_road_crash_database.aspx>.

Road deaths from recent months are preliminary and subject to revision.