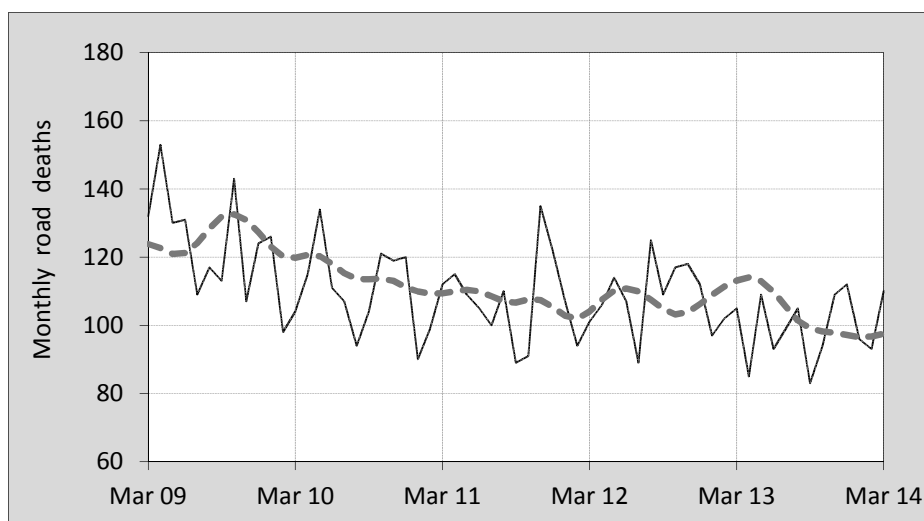




## This month's key figures

- There was a total of 110 road deaths during the month of March 2014. In comparison to the average for March over the previous five years, the current figure is 0.7 per cent lower.
- During the 12 months ended March there were 1,188 road deaths. This is a 8.7 per cent reduction compared to the total for the 12-monthly period ended March 2013.
- Presently the rate of annual deaths per 100,000 population stands at 5.1. Compared to the figure for the 12-monthly period ending March 2013, this is a 10.3 per cent reduction.

## Monthly Australian road deaths — last five years, with trend



### Data Sources

Data are obtained from

- Transport for NSW
- Vicroads
- Department of Transport and Main Roads, Queensland
- Department for Transport, Energy and Infrastructure, S.A.
- Western Australia Police
- Department of Infrastructure, Energy and Resources, Tasmania
- Department of Transport, Northern Territory
- Department of Territory and Municipal Services, ACT
- Australian Bureau of Statistics (3101.0)

### Inquiries

For further information about data in this bulletin, contact:

Bureau of Infrastructure, Transport and Regional Economics

Web : [www.bitre.gov.au](http://www.bitre.gov.au)

Email : [roadsafety@infrastructure.gov.au](mailto:roadsafety@infrastructure.gov.au)

Road deaths from recent months are preliminary and subject to revision.

© Copyright. Commonwealth of Australia

## I. Current month and year to date

### Deaths by jurisdiction

Current month	NSW	Vic	Qld	SA	WA	Tas	NT	ACT	Australia
March 2013	30	24	19	17	8	4	0	3	105
March 2014	27	23	21	12	20	2	3	2	110
Per cent change	-10.0	-4.2	10.5	-29.4	150.0	-50.0	-	-33.3	4.8

Year to date	NSW	Vic	Qld	SA	WA	Tas	NT	ACT	Australia
January 2013 - March 2013	78	62	75	32	41	9	3	4	304
January 2014 - March 2014	93	68	51	25	42	7	9	4	299
Per cent change	19.2	9.7	-32.0	-21.9	2.4	-22.2	200.0	0.0	-1.6

## 2. Yearly deaths — last five 12 monthly periods

### Deaths by jurisdiction

12 months ended March	NSW	Vic	Qld	SA	WA	Tas	NT	ACT	Australia
2010	458	292	298	125	176	53	36	17	1,455
2011	391	286	254	106	201	28	43	17	1,326
2012	365	290	270	100	181	23	49	0	1,278
2013	357	269	298	101	180	34	46	16	1,301
2014	355	248	247	91	163	34	43	7	1,188
Latest per cent change	-0.6	-7.8	-17.1	-9.9	-9.4	0.0	-6.5	-56.3	-8.7
Average trend change per year (per cent)	-5.8	-3.8	-2.1	-6.6	-2.6	-6.7	4.3	-	-4.2

### Deaths by road user

12 months ended March	Driver	Passenger	Pedestrian	Motorcyclist	Cyclist	Total <sup>a</sup>
2010	681	323	199	215	36	1,455
2011	619	280	167	228	32	1,326
2012	569	288	184	202	33	1,278
2013	628	249	159	222	39	1,301
2014	550	211	165	202	52	1,188
Latest per cent change	-12.4	-15.3	3.8	-9.0	33.3	-8.7
Average trend change per year (per cent)	-4.0	-9.2	-4.1	-1.5	9.8	-4.2

a Includes deaths where road user type is unknown

## Deaths by age-group <sup>a</sup> (years)

<b>12 months ended March</b>	<i>0 to 16</i>	<i>17 to 25</i>	<i>26 to 39</i>	<i>40 to 64</i>	<i>65 to 74</i>	<i>≥ 75</i>	<i>Total<sup>b</sup></i>
2010	104	332	323	453	95	147	1,455
2011	69	323	295	415	99	125	1,326
2012	94	290	305	374	81	134	1,278
2013	74	288	285	409	100	144	1,301
2014	64	209	240	397	115	161	1,188
<i>Latest per cent change</i>	-13.5	-27.4	-15.8	-2.9	15.0	11.8	-8.7
<i>Average trend change per year (per cent)</i>	-8.6	-9.9	-6.1	-2.7	4.0	3.3	-4.2

a Note: changed age groups

b Includes deaths to persons with age not recorded.

## Deaths by gender

<b>12 months ended March</b>	<i>Males</i>	<i>Females</i>	<i>Total<sup>c</sup></i>
2010	1,069	384	1,455
2011	960	365	1,326
2012	930	346	1,278
2013	915	385	1,301
2014	866	321	1,188
<i>Latest per cent change</i>	-5.4	-16.6	-8.7
<i>Average trend change per year (per cent)</i>	-4.6	-3.0	-4.2

c Includes deaths to persons with gender not recorded.

## 3. Annual deaths per 100,000 population

### By jurisdiction

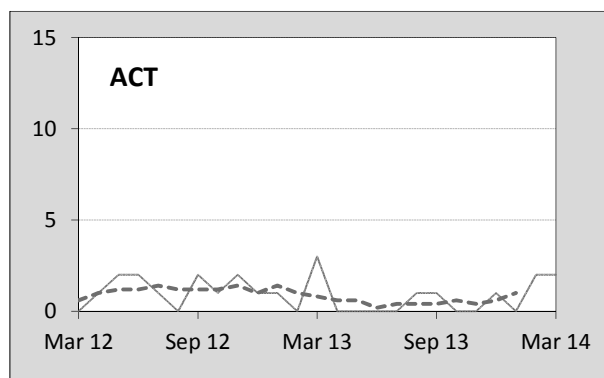
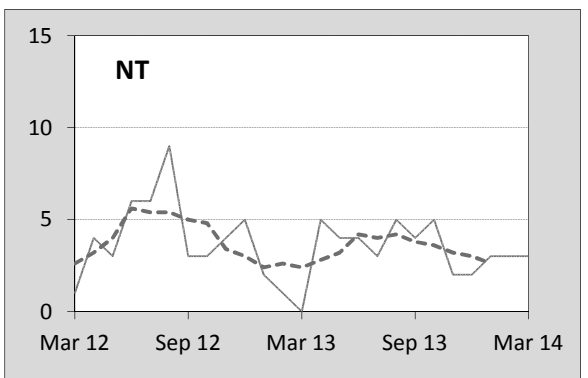
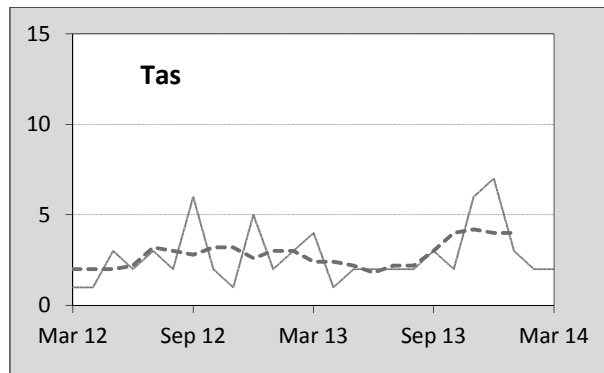
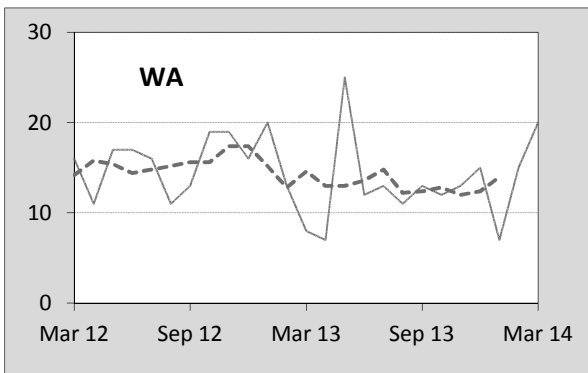
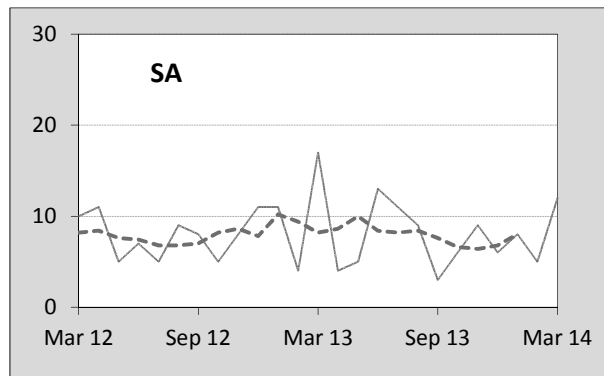
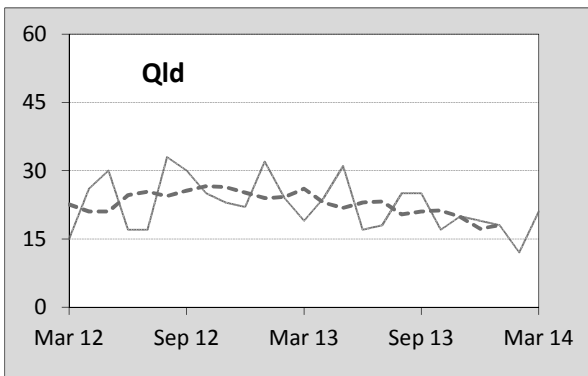
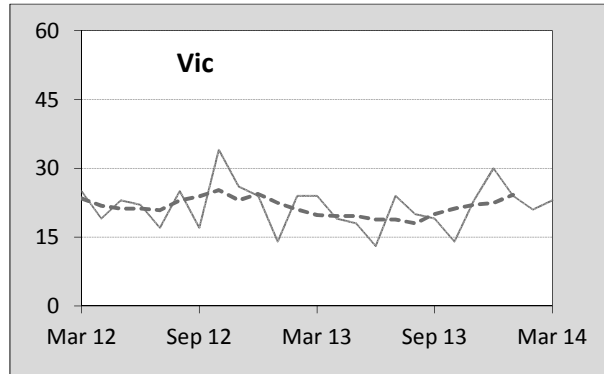
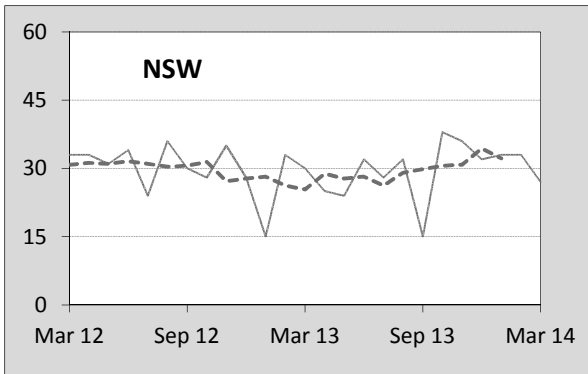
<b>12 months ended March</b>	<i>NSW</i>	<i>Vic</i>	<i>Qld</i>	<i>SA</i>	<i>WA</i>	<i>Tas</i>	<i>NT</i>	<i>ACT</i>	<i>Australia</i>
2010	6.46	5.41	6.85	7.74	7.77	10.49	15.40	4.77	6.66
2011	5.46	5.22	5.74	6.50	8.76	5.50	18.22	4.69	6.00
2012	5.04	5.22	6.00	6.09	7.63	4.49	20.64	0.00	5.69
2013	4.87	4.75	6.49	6.09	7.32	6.64	19.37	4.24	5.70
2014	4.77	4.30	5.28	5.43	6.43	6.62	17.79	1.83	5.11
<i>Latest per cent change</i>	-2.0	-9.6	-18.6	-10.7	-12.2	-0.2	-8.2	-56.9	-10.3
<i>Average trend change per year (per cent)</i>	-6.9	-5.4	-3.9	-7.4	-5.4	-7.0	3.6	-	-5.6

<b>Calendar year</b>	<i>NSW</i>	<i>Vic</i>	<i>Qld</i>	<i>SA</i>	<i>WA</i>	<i>Tas</i>	<i>NT</i>	<i>ACT</i>	<i>Australia</i>
2009	6.42	5.40	7.65	7.40	8.48	12.49	13.27	3.38	6.86
2010	5.67	5.27	5.65	7.25	8.42	6.09	21.32	5.25	6.14
2011	5.04	5.18	6.01	6.28	7.65	4.69	19.02	1.63	5.72
2012	5.05	5.01	6.13	5.68	7.47	6.05	20.77	3.20	5.72
2013	4.59	4.22	5.82	5.87	6.43	7.02	15.37	1.83	5.16
<i>Latest per cent change</i>	-9.1	-15.8	-5.1	3.3	-13.9	15.9	-26.0	-42.6	-9.8

#### 4. Monthly deaths by jurisdiction — last 24 months

— raw  
 - - - smoothed (unweighted 5-point moving average)



## 5. Fatal crashes: counts and characteristics

12 months ended March	Crash type <sup>d</sup>			Posted speed limit				Total <sup>e</sup>
	Single	Multiple	Pedestrian	0 to 60	70 to 90	100	≥ 110	
2010	617	500	193	404	291	435	172	1,310
2011	534	518	165	355	283	409	165	1,217
2012	519	457	180	351	245	403	145	1,156
2013	544	490	159	400	280	356	144	1,193
2014	496	438	163	339	239	365	129	1,097
<i>Average trend change per year (per cent)</i>	-4.1	-3.2	-3.7	-2.3	-4.0	-4.8	-6.9	-3.7

12 months ended March	Day of week <sup>f</sup>		Time of Day <sup>g</sup>	
	Weekday	Weekend	Day	Night
2010	803	507	770	540
2011	708	509	716	501
2012	675	481	708	448
2013	737	456	741	452
2014	668	429	696	401
<i>Average trend change per year (per cent)</i>	-3.2	-4.3	-1.7	-6.7

d 'Single' and 'Multiple' refer to the number of vehicles involved in a fatal crash where there is no pedestrian killed.

e Includes crashes where speed limit is unknown

f 'Weekday' refers to 6am Monday through to 5:59pm Friday.

g 'Day' refers to 6am through to 5:59 pm.

## Appendix

### Definition

The road safety agencies in each jurisdiction use detailed criteria to define road crashes and road deaths. Briefly, a death is classified as resulting from a road crash if the crash occurred on a public road, is unintentional and the death occurred within 30 days from injuries sustained in the crash.

### Population rates

Rates per population are based on the deaths to the current 12 monthly period, and the population at the midpoint of the period. The population at midpoints are interpolated if necessary.

### Average trend change ( % per year )

Calculated by fitting an exponential curve through the five data points, and quoting the constant (annual) change of this curve.

### Other sources for the tables in this bulletin

The underlying database used to produce this bulletin — the Australian Road Deaths Database is available for online querying and data extraction at

< [http://www.bitre.gov.au/statistics/safety/fatal\\_road\\_crash\\_database.aspx](http://www.bitre.gov.au/statistics/safety/fatal_road_crash_database.aspx) >

Road deaths from recent months are preliminary and subject to revision.