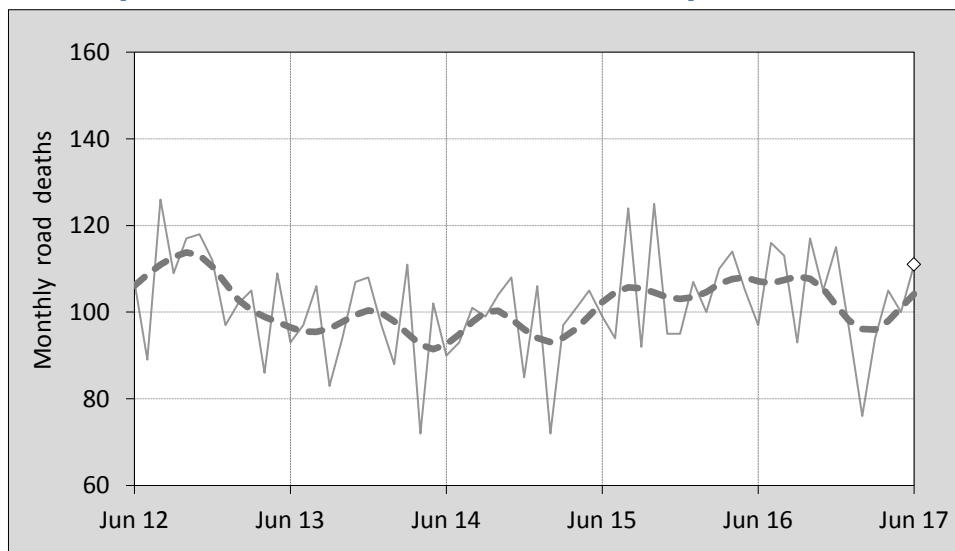




This month's key figures

- There was a total of 111 road deaths during the month of June 2017. In comparison to the average for June over the previous five years, the current figure is 14.2 per cent higher.
- During the 12 months ended June 2017, there were 1,241 road deaths. This is a 1.4 per cent decrease compared to the total for the 12-month period ended June 2016.
- Presently, the rate of annual deaths per 100,000 population stands at 5.1. Compared to the figure for the 12-month period ending June 2016, this is a 2.9 per cent decrease.

Monthly Australian road deaths — last five years, with trend



Data Sources

Data are obtained from

- Transport for NSW
- Vicroads
- Department of Transport and Main Roads, Queensland
- Department of Planning, Transport and Infrastructure, S.A.
- Western Australia Police
- Department of State Growth, Tasmania
- Department of Transport, Northern Territory
- Transport Canberra and City Services Directorate, ACT
- Australian Bureau of Statistics (3101.0)

Inquiries

For further information about data in this bulletin, contact:

Bureau of Infrastructure, Transport and
Regional Economics
Web : www.bitre.gov.au
Email : roadsafety@infrastructure.gov.au

Road deaths from recent months are preliminary and subject to revision.

See www.roadsafety.gov.au for performance indicators used to monitor progress under the National Road Safety Strategy 2011-2020 (NRSS).

© Copyright. Commonwealth of Australia

1. Deaths by jurisdiction

Table 1.1 Current month

Current month	NSW	Vic	Qld	SA	WA	Tas	NT	ACT	Australia
June 2016	34	23	20	7	10	2	1	0	97
June 2017	34	17	27	10	12	6	5	0	111
Per cent change	0.0	-26.1	35.0	42.9	20.0	200.0	400.0	-	14.4

Table 1.2 Year to date

Year to date	NSW	Vic	Qld	SA	WA	Tas	NT	ACT	Australia
January 2016 - June 2016	197	145	118	43	88	22	18	2	633
January 2017 - June 2017	186	120	120	43	76	17	17	3	582
Per cent change	-5.6	-17.2	1.7	0.0	-13.6	-22.7	-5.6	50.0	-8.1

Table 1.3 Year ending June

12 months ended June	NSW	Vic	Qld	SA	WA	Tas	NT	ACT	Australia
2013	341	255	297	100	180	33	46	11	1,263
2014	337	256	229	87	159	37	42	8	1,155
2015	304	254	235	112	180	33	41	11	1,170
2016	386	266	244	97	169	41	44	11	1,258
2017	369	266	253	86	181	32	44	10	1,241
Latest per cent change	-4.4	0.0	3.7	-11.3	7.1	-22.0	0.0	-9.1	-1.4
Average trend change per year (per cent)	3.0	1.2	-2.5	-1.9	0.7	0.4	-0.4	1.3	0.5

2. Deaths by road user, age-group and gender

Table 2.1 By road user

12 months ended June	Driver	Passenger	Pedestrian	Motorcyclist ^b	Pedal ^b cyclist	Total ^c
2013	623	245	150	200	38	1,263
2014	532	209	160	194	58	1,155
2015	539	247	152	199	30	1,170
2016	600	225	167	229	35	1,258
2017	592	210	168	240	24	1,241
Latest per cent change	-1.3	-6.7	0.6	4.8	-31.4	-1.4
Average trend change per year (per cent)	0.2	-2.3	2.7	5.4	-13.3	0.5

Table 2.2 By age-group^a (years)

12 months ended June	0 to 16	17 to 25	26 to 39	40 to 64	65 to 74	≥ 75	Total ^c
2013	70	274	264	403	108	143	1,263
2014	59	212	250	378	112	144	1,155
2015	75	248	250	342	106	146	1,170
2016	55	224	278	418	116	167	1,258
2017	63	258	277	387	102	153	1,241
Latest per cent change	14.5	15.2	-0.4	-7.4	-12.1	-8.4	-1.4
Average trend change per year (per cent)	-2.8	-0.7	2.0	0.2	-0.8	2.9	0.5

2. Deaths by road user, age-group and gender (continued)

Table 2.3 By gender

12 months ended June	<i>Males</i>	<i>Females</i>	<i>Total^d</i>
2013	897	365	1,263
2014	843	311	1,155
2015	821	349	1,170
2016	919	339	1,258
2017	916	322	1,241
<i>Latest per cent change</i>	-0.3	-5.0	-1.4
<i>Average trend change per year (per cent)</i>	1.3	-1.6	0.5

a Age groups were changed in March 2014.

b Includes pillion passengers.

c Includes deaths to persons with either age or road user type not recorded.

d Includes deaths to persons with gender not recorded.

3. Annual deaths per 100,000 population

Table 3.1 Year ended June

12 months ended June	<i>NSW</i>	<i>Vic</i>	<i>Qld</i>	<i>SA</i>	<i>WA</i>	<i>Tas</i>	<i>NT</i>	<i>ACT</i>	<i>Australia</i>
2013	4.63	4.46	6.44	6.01	7.31	6.44	19.21	2.89	5.51
2014	4.52	4.39	4.88	5.18	6.34	7.21	17.28	2.07	4.95
2015	4.01	4.26	4.94	6.61	7.11	6.42	16.86	2.80	4.94
2016	5.03	4.36	5.07	5.68	6.62	7.94	18.00	2.75	5.24
2017	4.73	4.26	5.18	5.01	7.05	6.17	17.96	2.46	5.09
<i>Latest per cent change</i>	-5.8	-2.3	2.2	-11.9	6.4	-22.4	-0.3	-10.6	-2.9
<i>Average trend change per year (per cent)</i>	1.5	-1.0	-3.9	-2.7	-0.3	0.1	-0.9	-0.4	-1.0

Table 3.2 Calendar year period

Calendar year	<i>NSW</i>	<i>Vic</i>	<i>Qld</i>	<i>SA</i>	<i>WA</i>	<i>Tas</i>	<i>NT</i>	<i>ACT</i>	<i>Australia</i>
2012	5.05	4.99	6.13	5.67	7.54	6.06	20.77	3.19	5.72
2013	4.49	4.21	5.82	5.86	6.50	7.02	15.24	1.82	5.13
2014	4.08	4.20	4.72	6.34	7.25	6.42	16.01	2.57	4.89
2015	4.59	4.18	5.08	5.99	6.29	6.60	20.00	3.78	5.05
2016	4.91	4.71	5.18	5.02	7.54	7.15	18.31	2.23	5.34
<i>Latest per cent change</i>	7.0	12.7	1.9	-16.2	19.9	8.4	-8.5	-41.0	5.6

4. Monthly deaths by jurisdiction — last 24 months

— raw
 - - - smoothed
 (13-point moving average)

Figure 4.1 NSW

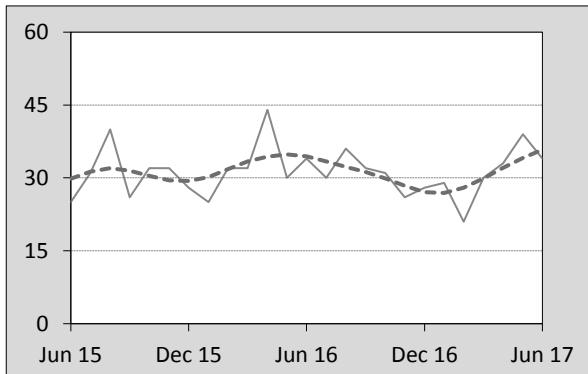


Figure 4.2 Vic

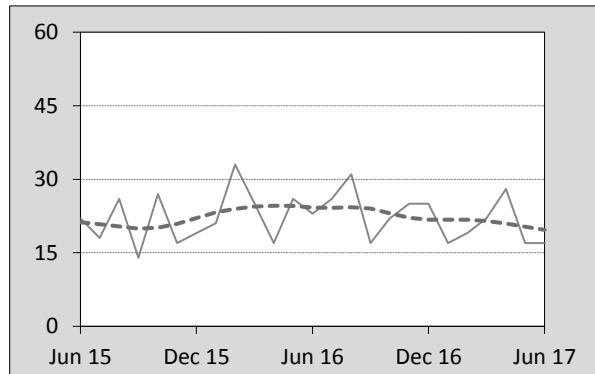


Figure 4.3 Qld

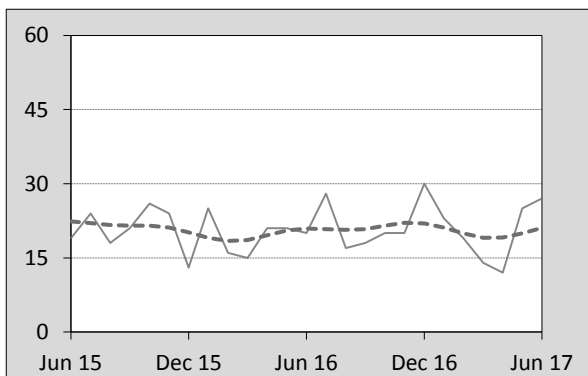


Figure 4.4 SA

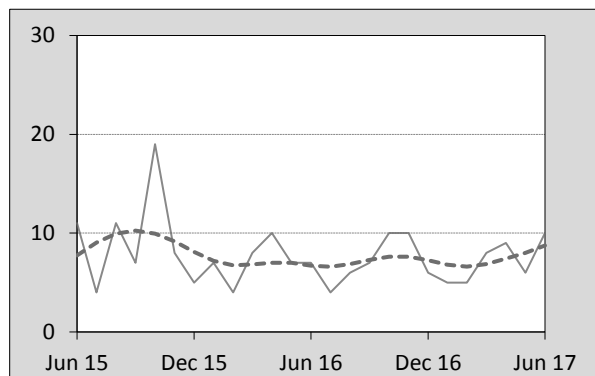


Figure 4.5 WA

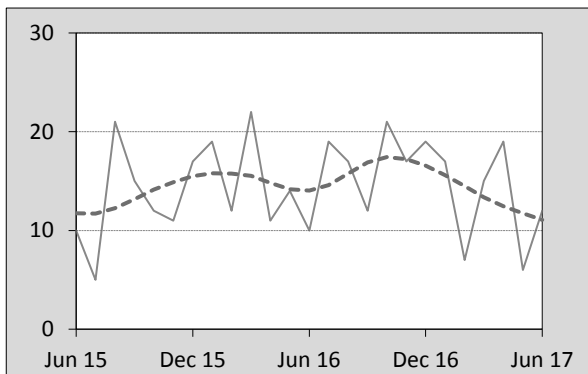


Figure 4.6 Tas

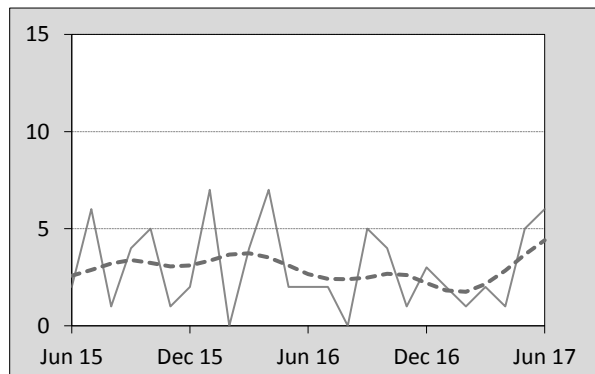


Figure 4.7 NT

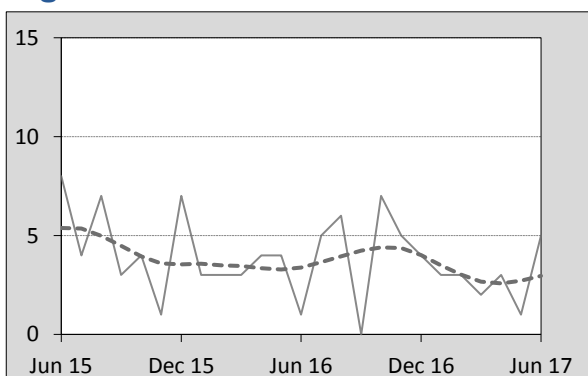
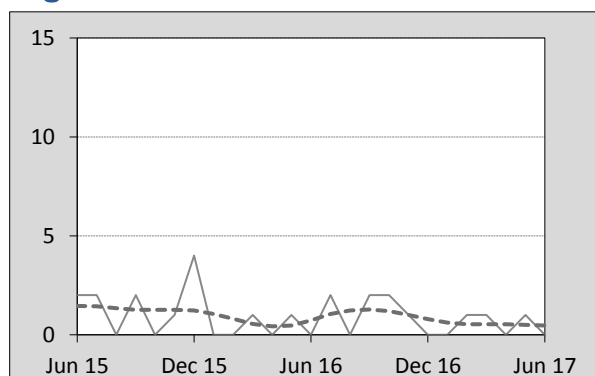


Figure 4.8 ACT



5. Fatal crashes: counts and characteristics

Table 5.1 By Crash type and Posted speed limit

12 months ended June	Crash type ^a			Posted speed limit						Total ^b
	Single	Multiple	Pedestrian	40	50	60	70 to 90	100	≥ 110	
2013	541	460	149	18	131	216	266	361	145	1,150
2014	458	452	158	10	125	186	236	365	129	1,068
2015	477	433	150	17	116	212	219	341	142	1,060
2016	521	474	161	11	129	213	273	364	155	1,156
2017	519	486	154	20	123	198	272	360	144	1,159
Latest per cent change	-0.4	2.5	-4.3	81.8	-4.7	-7.0	-0.4	-1.1	-7.1	0.3
Average trend change per year (per cent)	0.5	1.6	0.9	3.1	-0.9	-0.4	1.9	-0.1	1.7	1.0

Table 5.2 By Day of week and Time of day

12 months ended June	Day of week ^c		Time of Day ^d	
	Weekday	Weekend	Day	Night
2013	696	454	715	435
2014	659	409	675	393
2015	642	418	660	400
2016	728	428	723	433
2017	716	443	707	452
Latest per cent change	-1.6	3.5	-2.2	4.4
Average trend change per year (per cent)	1.6	0.0	0.5	1.8

a 'Single' and 'Multiple' refer to the number of vehicles involved in a fatal crash where there is no pedestrian killed.

b Includes crashes where speed limit is unknown or where the posted speed limit is 30km/hr or less.

c 'Weekday' refers to 6am Monday through to 5:59pm Friday.

d 'Day' refers to 6am through to 5:59 pm.

Appendix

Definition

The road safety agencies in each jurisdiction use detailed criteria to define road crashes and road deaths. Briefly, a death is classified as resulting from a road crash if the crash occurred on a public road, is unintentional and the death occurred within 30 days from injuries sustained in the crash.

Population rates

Rates per population are based on the deaths to the current 12-month period, and the population at the midpoint of the period. The population at midpoints is interpolated if necessary.

Average trend change (% per year)

Calculated by fitting an exponential curve through the five data points, and quoting the constant (annual) change of this curve.

Other sources for the tables in this bulletin

The underlying database used to produce this bulletin — *the Australian Road Deaths Database* is available for data extraction at <http://www.bitre.gov.au/statistics/safety/fatal_road_crash_database.aspx>.

Road deaths from recent months are preliminary and subject to revision.