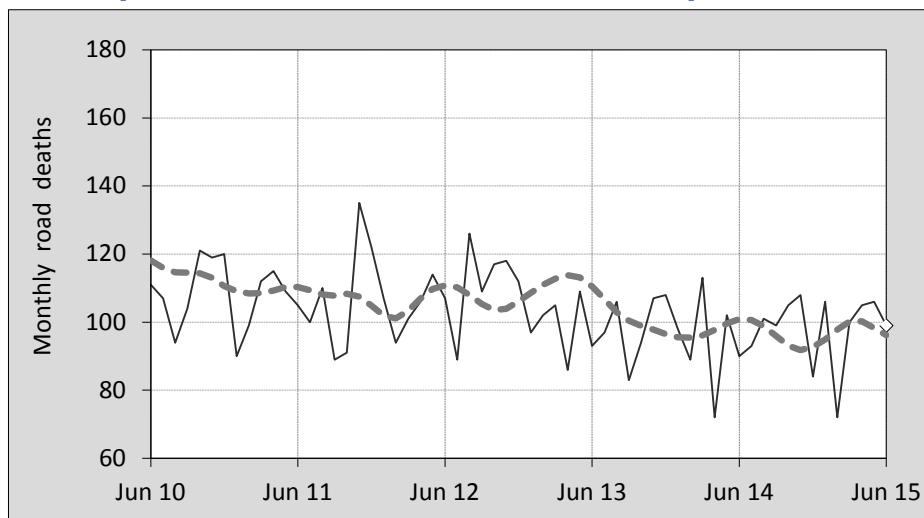




This month's key figures

- There was a total of 99 road deaths during the month of June 2015. In comparison to the average for June over the previous five years, the current figure is 2.2 per cent lower.
- During the 12 months ended June there were 1,178 road deaths. This is a 1.6 per cent increase compared to the total for the 12-monthly period ended June 2014.
- Presently the rate of annual deaths per 100,000 population stands at 5.0. Compared to the figure for the 12-monthly period ending June 2014, this is a 0.2 per cent increase.

Monthly Australian road deaths — last five years, with trend



Data Sources

Data are obtained from

- Transport for NSW
- Vicroads
- Department of Transport and Main Roads, Queensland
- Department of Planning, Transport and Infrastructure, S.A.
- Western Australia Police
- Department of State Growth, Tasmania
- Department of Transport, Northern Territory
- Territory and Municipal Services Directorate, ACT
- Australian Bureau of Statistics (3101.0)

Inquiries

For further information about data in this bulletin, contact:

Bureau of Infrastructure, Transport and
Regional Economics
Web : www.bitre.gov.au
Email : roadsafety@infrastructure.gov.au

Road deaths from recent months are preliminary and subject to revision.

© Copyright. Commonwealth of Australia

I. Deaths by jurisdiction

Table I.1 Current month

Current month	NSW	Vic	Qld	SA	WA	Tas	NT	ACT	Australia
June 2014	25	17	19	6	17	2	3	1	90
June 2015	26	21	19	10	9	3	8	3	99
Per cent change	4.0	23.5	0.0	66.7	-47.1	50.0	166.7	200.0	10.0

Table I.2 Year to date

Year to date	NSW	Vic	Qld	SA	WA	Tas	NT	ACT	Australia
January 2014 - June 2014	164	125	105	43	84	17	21	5	564
January 2015 - June 2015	168	129	118	47	78	17	23	8	588
Per cent change	2.4	3.2	12.4	9.3	-7.1	0.0	9.5	60.0	4.3

Table I.3 Year ending June

12 months ended June	NSW	Vic	Qld	SA	WA	Tas	NT	ACT	Australia
2011	355	294	251	111	199	31	44	10	1,295
2012	386	269	278	89	177	19	53	5	1,276
2013	341	255	297	100	180	33	46	11	1,263
2014	337	256	229	87	161	39	42	8	1,159
2015	314	253	236	111	175	35	41	13	1,178
Latest per cent change	-6.8	-1.2	3.1	27.6	8.7	-10.3	-2.4	62.5	1.6
Average trend change per year (per cent)	-3.7	-3.4	-3.1	-0.2	-3.5	10.1	-3.7	10.5	-2.8

2. Deaths by road user, age-group and gender

Table 2.1 By road user

12 months ended June	Driver	Passenger	Pedestrian	Motorcyclist ^b	Pedal ^b cyclist	Total ^c
2011	603	274	173	212	33	1,295
2012	558	274	193	218	31	1,276
2013	623	245	150	200	38	1,263
2014	535	210	160	194	58	1,159
2015	542	245	155	201	32	1,178
Latest per cent change	1.3	16.7	-3.1	3.6	-44.8	1.6
Average trend change per year (per cent)	-2.5	-4.8	-4.0	-2.2	5.8	-2.8

Table 2.2 By age-group^a (years)

12 months ended June	0 to 16	17 to 25	26 to 39	40 to 64	65 to 74	≥ 75	Total ^c
2011	70	324	278	403	85	135	1,295
2012	92	271	318	361	87	147	1,276
2013	70	274	264	403	108	143	1,263
2014	59	212	251	380	112	145	1,159
2015	74	249	252	351	107	140	1,178
Latest per cent change	25.4	17.5	0.4	-7.6	-4.5	-3.4	1.6
Average trend change per year (per cent)	-3.3	-7.4	-4.2	-2.2	7.4	0.6	-2.8

2. Deaths by road user, age-group and gender (continued)

Table 2.3 By gender

12 months ended June	<i>Males</i>	<i>Females</i>	<i>Total^d</i>
2011	951	343	1,295
2012	908	367	1,276
2013	897	365	1,263
2014	846	312	1,159
2015	831	347	1,178
<i>Latest per cent change</i>	-1.8	11.2	1.6
<i>Average trend change per year (per cent)</i>	-3.3	-1.4	-2.8

a Age groups were changed in March 2014.

b Includes pillion passengers

c Includes deaths to persons with either age or road user type not recorded.

d Includes deaths to persons with gender not recorded.

3. Annual deaths per 100,000 population

Table 3.1 Year ended June

12 months ended June	<i>NSW</i>	<i>Vic</i>	<i>Qld</i>	<i>SA</i>	<i>WA</i>	<i>Tas</i>	<i>NT</i>	<i>ACT</i>	<i>Australia</i>
2011	4.94	5.35	5.66	6.80	8.58	6.08	19.11	2.74	5.84
2012	5.32	4.82	6.15	5.40	7.40	3.71	22.78	1.35	5.67
2013	4.64	4.49	6.44	6.02	7.26	6.44	19.22	2.91	5.51
2014	4.52	4.43	4.89	5.19	6.34	7.59	17.26	2.09	4.98
2015	4.15	4.30	4.97	6.56	6.78	6.79	16.79	3.35	4.99
<i>Latest per cent change</i>	-8.1	-2.9	1.7	26.5	7.0	-10.5	-2.8	60.7	0.2
<i>Average trend change per year (per cent)</i>	-5.0	-5.1	-4.8	-1.1	-6.1	9.8	-5.2	8.8	-4.4

Table 3.2 Calendar year period

Calendar year	<i>NSW</i>	<i>Vic</i>	<i>Qld</i>	<i>SA</i>	<i>WA</i>	<i>Tas</i>	<i>NT</i>	<i>ACT</i>	<i>Australia</i>
2010	5.67	5.27	5.65	7.25	8.42	6.09	21.76	5.25	6.14
2011	5.04	5.18	6.01	6.28	7.61	4.69	19.46	1.63	5.72
2012	5.05	5.01	6.13	5.68	7.51	6.05	20.77	3.20	5.72
2013	4.50	4.24	5.83	5.87	6.44	7.02	15.25	1.84	5.13
2014	4.12	4.26	4.72	6.35	7.06	6.80	15.94	2.59	4.92
<i>Latest per cent change</i>	-8.3	0.6	-18.9	8.2	9.6	-3.1	4.5	41.2	-4.3

4. Monthly deaths by jurisdiction — last 24 months

— raw
 - - - smoothed
 (unweighted 5-point moving average)

Figure 4.1 NSW

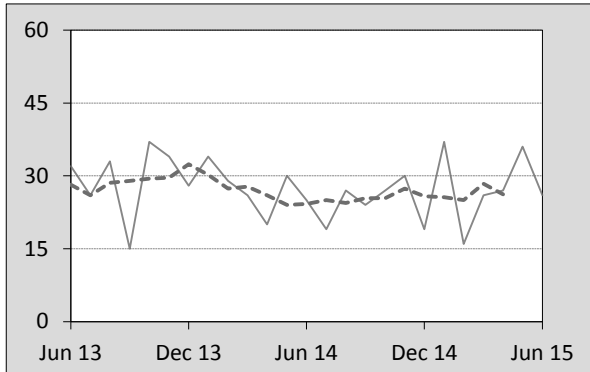


Figure 4.2 Vic

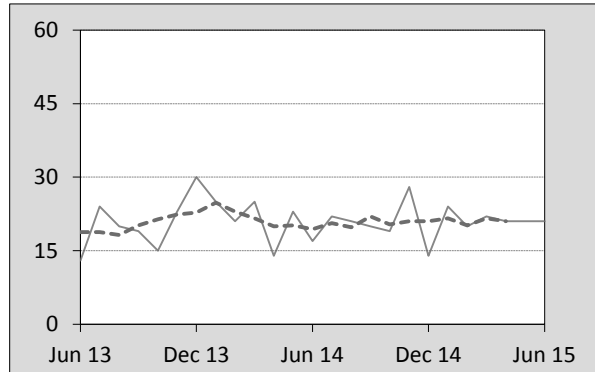


Figure 4.3 Qld

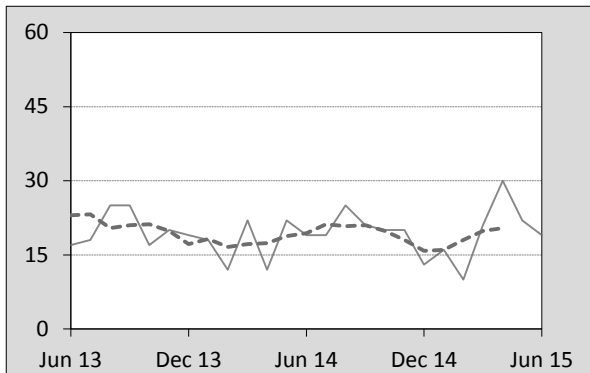


Figure 4.4 SA

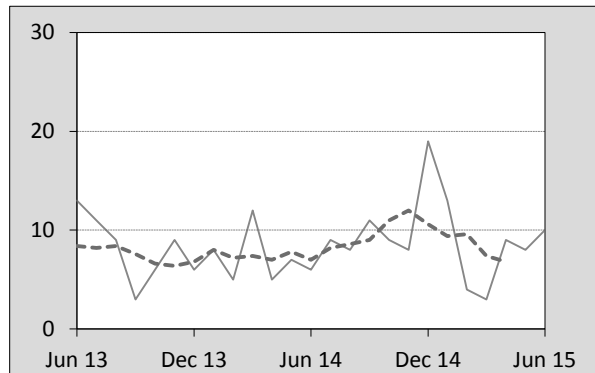


Figure 4.5 WA

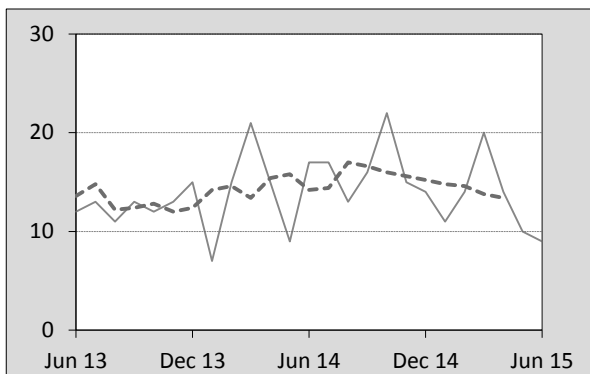


Figure 4.6 Tas

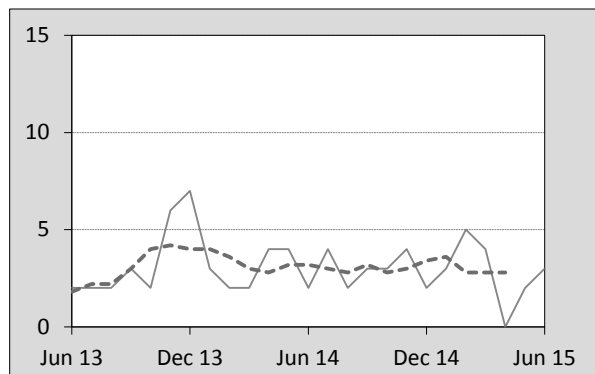


Figure 4.7 NT

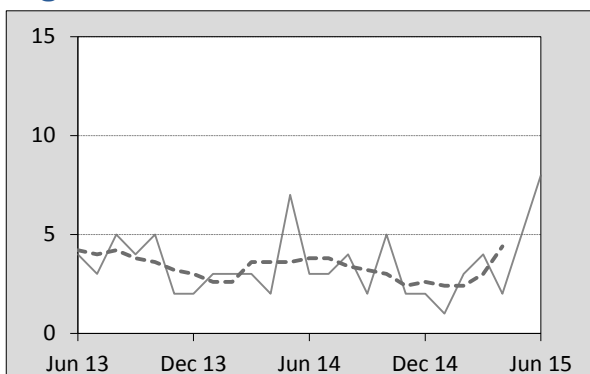
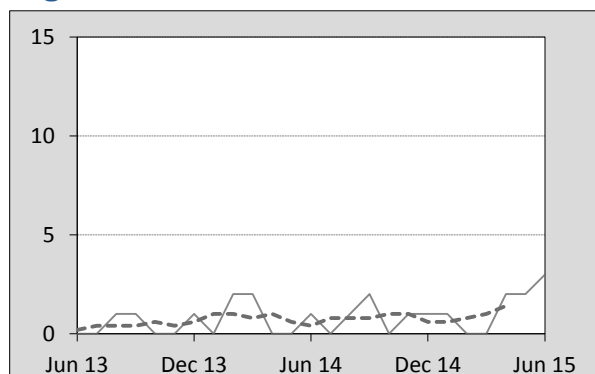


Figure 4.8 ACT



5. Fatal crashes: counts and characteristics

Table 5.1 By Crash type and Posted speed limit

12 months ended June	Crash type ^a			Posted speed limit				Total ^b
	Single	Multiple	Pedestrian	0 to 60	70 to 90	100	≥ 110	
2011	535	484	171	331	273	410	168	1,190
2012	499	475	189	394	259	372	126	1,163
2013	541	460	149	368	266	361	145	1,150
2014	463	451	158	324	238	366	130	1,072
2015	512	403	153	348	219	336	138	1,068
Latest per cent change	10.6	-10.6	-3.2	7.4	-8.0	-8.2	6.2	-0.4
Average trend change per year (per cent)	-1.6	-4.1	-3.9	-0.9	-5.1	-4.1	-3.6	-2.9

Table 5.2 By Day of week and Time of day

12 months ended June	Day of week ^c		Time of Day ^d	
	Weekday	Weekend	Day	Night
2011	692	498	704	486
2012	706	457	730	433
2013	696	454	715	435
2014	661	411	679	393
2015	647	421	662	406
Latest per cent change	-2.1	2.4	-2.5	3.3
Average trend change per year (per cent)	-2.0	-4.3	-1.9	-4.5

a 'Single' and 'Multiple' refer to the number of vehicles involved in a fatal crash where there is no pedestrian killed.

b Includes crashes where speed limit is unknown

c 'Weekday' refers to 6am Monday through to 5:59pm Friday.

d 'Day' refers to 6am through to 5:59 pm.

Appendix

Definition

The road safety agencies in each jurisdiction use detailed criteria to define road crashes and road deaths. Briefly, a death is classified as resulting from a road crash if the crash occurred on a public road, is unintentional and the death occurred within 30 days from injuries sustained in the crash.

Population rates

Rates per population are based on the deaths to the current 12 monthly period, and the population at the midpoint of the period. The population at midpoints are interpolated if necessary.

Average trend change (% per year)

Calculated by fitting an exponential curve through the five data points, and quoting the constant (annual) change of this curve.

Other sources for the tables in this bulletin

The underlying database used to produce this bulletin — *the Australian Road Deaths Database* is available for data extraction at <http://www.bitre.gov.au/statistics/safety/fatal_road_crash_database.aspx>.

Road deaths from recent months are preliminary and subject to revision.