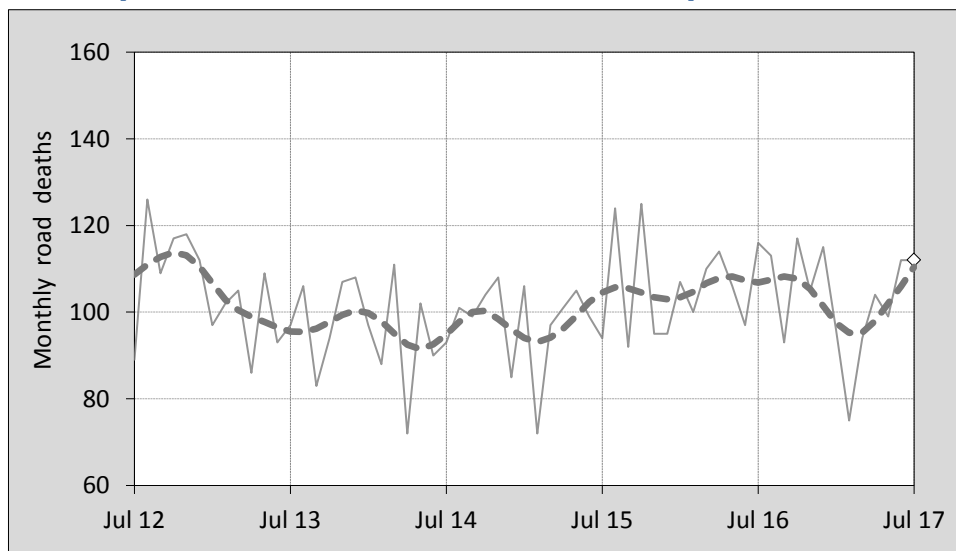




This month's key figures

- There was a total of 112 road deaths during the month of July 2017. In comparison to the average for July over the previous five years, the current figure is 14.5 per cent higher.
- During the 12 months ended July 2017, there were 1,235 road deaths. This is a 3.6 per cent decrease compared to the total for the 12-month period ended July 2016.
- Presently, the rate of annual deaths per 100,000 population stands at 5.1. Compared to the figure for the 12-month period ending July 2016, this is a 5.0 per cent decrease.

Monthly Australian road deaths — last five years, with trend



Data Sources

Data are obtained from

- Transport for NSW
- Vicroads
- Department of Transport and Main Roads, Queensland
- Department of Planning, Transport and Infrastructure, S.A.
- Western Australia Police
- Department of State Growth, Tasmania
- Department of Transport, Northern Territory
- Transport Canberra and City Services Directorate, ACT
- Australian Bureau of Statistics (3101.0)

Inquiries

For further information about data in this bulletin, contact:

Bureau of Infrastructure, Transport and Regional Economics
 Web : www.bitre.gov.au
 Email : roadsafety@infrastructure.gov.au

Road deaths from recent months are preliminary and subject to revision.

See www.roadsafety.gov.au for performance indicators used to monitor progress under the National Road Safety Strategy 2011-2020 (NRSS).

© Copyright. Commonwealth of Australia

1. Deaths by jurisdiction

Table 1.1 Current month

Current month	NSW	Vic	Qld	SA	WA	Tas	NT	ACT	Australia
July 2016	30	26	28	4	19	2	5	2	116
July 2017	41	21	23	12	10	2	3	0	112
Per cent change	36.7	-19.2	-17.9	200.0	-47.4	0.0	-40.0	-100.0	-3.4

Table 1.2 Year to date

Year to date	NSW	Vic	Qld	SA	WA	Tas	NT	ACT	Australia
January 2016 - July 2016	228	171	146	47	107	24	23	4	750
January 2017 - July 2017	224	142	143	55	86	19	20	3	692
Per cent change	-1.8	-17.0	-2.1	17.0	-19.6	-20.8	-13.0	-25.0	-7.7

Table 1.3 Year ending July

12 months ended July	NSW	Vic	Qld	SA	WA	Tas	NT	ACT	Australia
2013	343	262	298	106	177	32	43	10	1,271
2014	330	254	230	85	163	39	42	8	1,151
2015	316	250	240	107	168	35	42	13	1,171
2016	386	274	248	97	183	37	45	11	1,281
2017	377	262	248	94	172	32	42	8	1,235
Latest per cent change	-2.3	-4.4	0.0	-3.1	-6.0	-13.5	-6.7	-27.3	-3.6
Average trend change per year (per cent)	3.5	0.8	-2.9	-1.1	0.6	-0.5	0.2	-1.3	0.5

2. Deaths by road user, age-group and gender

Table 2.1 By road user

12 months ended July	Driver	Passenger	Pedestrian	Motorcyclist ^b	Pedal ^b cyclist	Total ^c
2013	621	249	152	202	39	1,271
2014	521	216	162	195	56	1,151
2015	538	242	151	203	32	1,171
2016	619	223	171	232	35	1,281
2017	583	218	169	233	25	1,235
Latest per cent change	-5.8	-2.2	-1.2	0.4	-28.6	-3.6
Average trend change per year (per cent)	0.5	-2.3	2.7	4.7	-12.7	0.5

Table 2.2 By age-group^a (years)

12 months ended July	0 to 16	17 to 25	26 to 39	40 to 64	65 to 74	≥ 75	Total ^c
2013	70	277	264	396	109	154	1,271
2014	63	211	249	375	115	137	1,151
2015	70	240	266	344	106	143	1,171
2016	57	239	276	427	118	164	1,281
2017	61	250	273	378	105	165	1,235
Latest per cent change	7.0	4.6	-1.1	-11.5	-11.0	0.6	-3.6
Average trend change per year (per cent)	-3.7	-0.8	1.7	0.4	-0.5	3.2	0.5

2. Deaths by road user, age-group and gender (continued)

Table 2.3 By gender

12 months ended July	<i>Males</i>	<i>Females</i>	<i>Total^d</i>
2013	911	359	1,271
2014	833	317	1,151
2015	823	348	1,171
2016	943	338	1,281
2017	899	330	1,235
<i>Latest per cent change</i>	-4.7	-2.4	-3.6
<i>Average trend change per year (per cent)</i>	1.0	-1.0	0.5

a Age groups were changed in March 2014.

b Includes pillion passengers.

c Includes deaths to persons with either age or road user type not recorded.

d Includes deaths to persons with gender not recorded.

3. Annual deaths per 100,000 population

Table 3.1 Year ended July

12 months ended July	<i>NSW</i>	<i>Vic</i>	<i>Qld</i>	<i>SA</i>	<i>WA</i>	<i>Tas</i>	<i>NT</i>	<i>ACT</i>	<i>Australia</i>
2013	4.66	4.58	6.45	6.37	7.17	6.25	17.92	2.63	5.53
2014	4.42	4.34	4.90	5.06	6.49	7.60	17.28	2.07	4.93
2015	4.17	4.18	5.04	6.31	6.63	6.80	17.26	3.30	4.94
2016	5.02	4.48	5.15	5.68	7.17	7.17	18.41	2.75	5.33
2017	4.83	4.19	5.07	5.47	6.70	6.16	17.16	1.97	5.06
<i>Latest per cent change</i>	-3.8	-6.6	-1.4	-3.6	-6.6	-14.0	-6.8	-28.4	-5.0
<i>Average trend change per year (per cent)</i>	2.0	-1.4	-4.2	-1.8	-0.4	-0.9	-0.2	-2.9	-1.0

Table 3.2 Calendar year period

Calendar year	<i>NSW</i>	<i>Vic</i>	<i>Qld</i>	<i>SA</i>	<i>WA</i>	<i>Tas</i>	<i>NT</i>	<i>ACT</i>	<i>Australia</i>
2012	5.05	4.99	6.13	5.67	7.54	6.06	20.77	3.19	5.72
2013	4.49	4.21	5.82	5.86	6.50	7.02	15.24	1.82	5.13
2014	4.08	4.20	4.72	6.34	7.25	6.42	16.01	2.57	4.89
2015	4.59	4.18	5.08	5.99	6.29	6.60	20.00	3.78	5.05
2016	4.92	4.71	5.18	5.02	7.54	7.15	18.31	2.23	5.34
<i>Latest per cent change</i>	7.3	12.7	1.9	-16.2	19.9	8.4	-8.5	-41.0	5.7

4. Monthly deaths by jurisdiction — last 24 months

— raw
 - - - smoothed
 (13-point moving average)

Figure 4.1 NSW

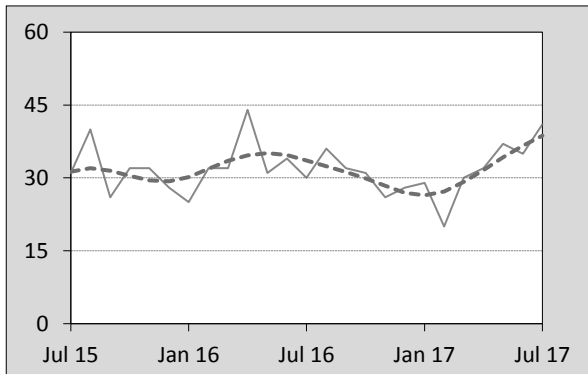


Figure 4.2 Vic

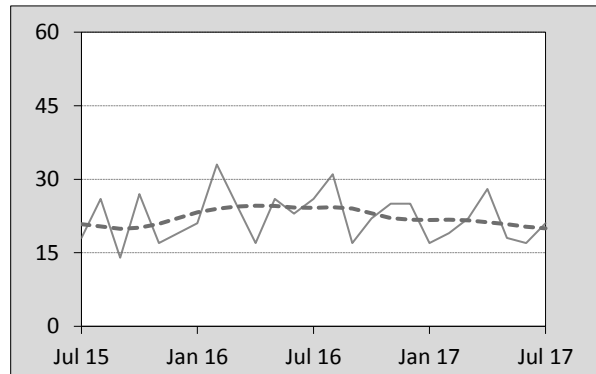


Figure 4.3 Qld

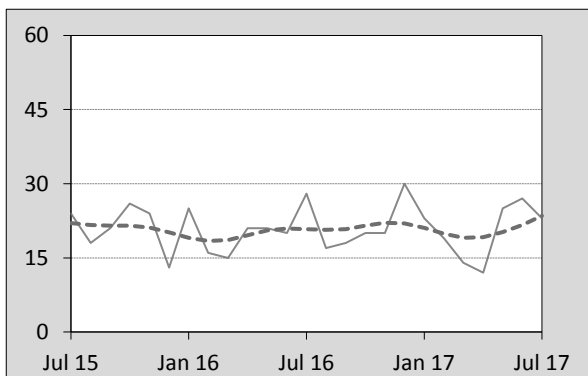


Figure 4.4 SA

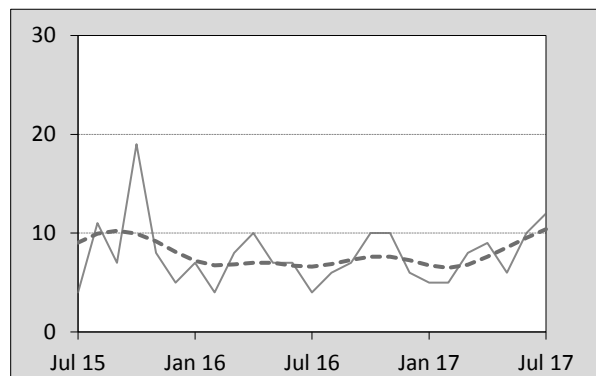


Figure 4.5 WA

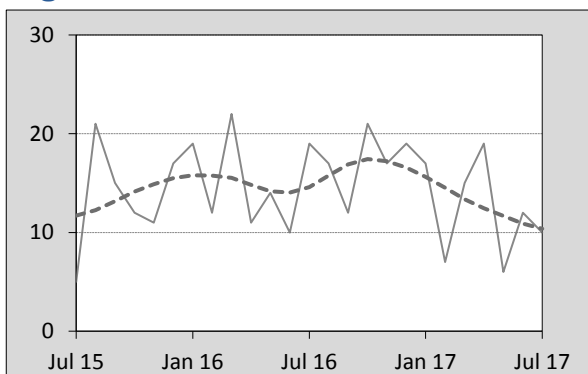


Figure 4.6 Tas

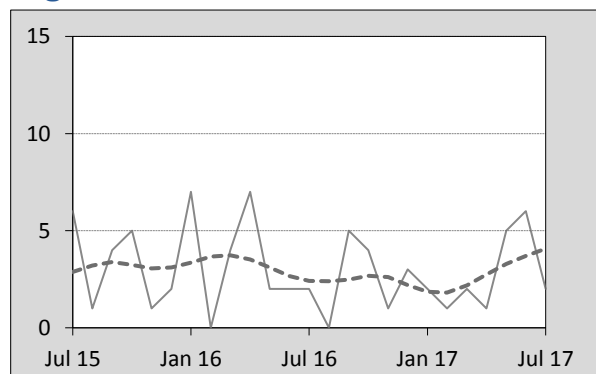


Figure 4.7 NT

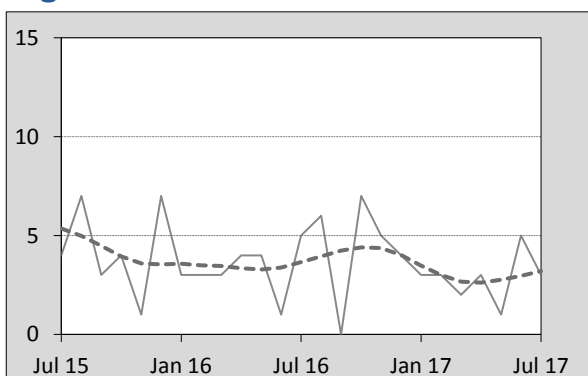
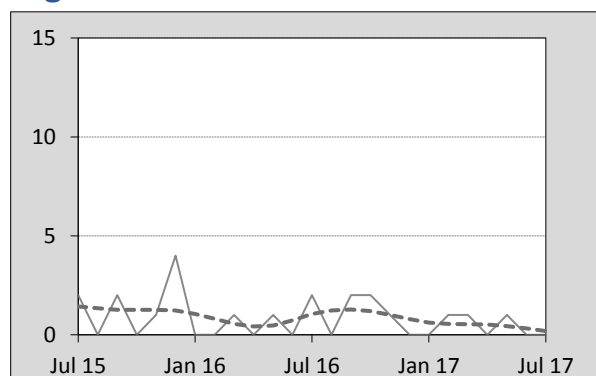


Figure 4.8 ACT



5. Fatal crashes: counts and characteristics

Table 5.1 By Crash type and Posted speed limit

12 months ended July	Crash type ^a			Posted speed limit						Total ^b
	Single	Multiple	Pedestrian	40	50	60	70 to 90	100	≥ 110	
2013	542	463	151	18	131	219	263	366	143	1,156
2014	463	439	160	10	122	186	241	355	133	1,062
2015	476	438	149	18	116	205	217	356	139	1,063
2016	539	478	162	12	132	211	283	370	160	1,179
2017	506	486	158	21	127	203	257	344	149	1,150
Latest per cent change	-6.1	1.7	-2.5	75.0	-3.8	-3.8	-9.2	-7.0	-6.9	-2.5
Average trend change per year (per cent)	0.1	1.8	1.0	5.0	0.2	-0.3	1.2	-0.8	2.7	0.9

Table 5.2 By Day of week and Time of day

12 months ended July	Day of week ^c		Time of Day ^d	
	Weekday	Weekend	Day	Night
2013	710	446	725	431
2014	642	420	668	394
2015	651	412	661	402
2016	723	456	727	452
2017	719	431	719	431
Latest per cent change	-0.6	-5.5	-1.1	-4.6
Average trend change per year (per cent)	1.5	0.1	0.7	1.4

a 'Single' and 'Multiple' refer to the number of vehicles involved in a fatal crash where there is no pedestrian killed.

b Includes crashes where speed limit is unknown or where the posted speed limit is 30km/hr or less.

c 'Weekday' refers to 6am Monday through to 5:59pm Friday.

d 'Day' refers to 6am through to 5:59 pm.

Appendix

Definition

The road safety agencies in each jurisdiction use detailed criteria to define road crashes and road deaths. Briefly, a death is classified as resulting from a road crash if the crash occurred on a public road, is unintentional and the death occurred within 30 days from injuries sustained in the crash.

Population rates

Rates per population are based on the deaths to the current 12-month period, and the population at the midpoint of the period. The population at midpoints is interpolated if necessary.

Average trend change (% per year)

Calculated by fitting an exponential curve through the five data points, and quoting the constant (annual) change of this curve.

Other sources for the tables in this bulletin

The underlying database used to produce this bulletin — *the Australian Road Deaths Database* is available for data extraction at <http://www.bitre.gov.au/statistics/safety/fatal_road_crash_database.aspx>.

Road deaths from recent months are preliminary and subject to revision.