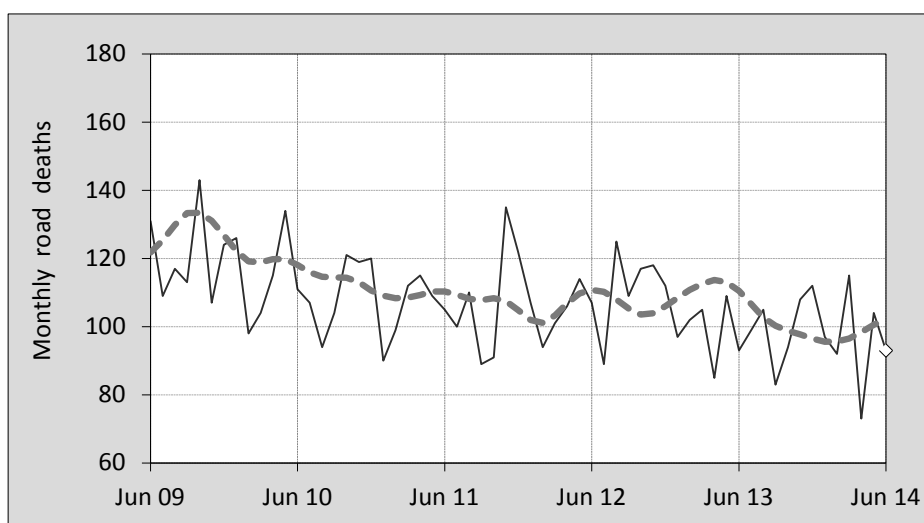




This month's key figures

- There was a total of 93 road deaths during the month of June 2014. In comparison to the average for June over the previous five years, the current figure is 15.0 per cent lower.
- During the 12 months ended June there were 1,175 road deaths. This is a 6.8 per cent reduction compared to the total for the 12-monthly period ended June 2013.
- Presently the rate of annual deaths per 100,000 population stands at 5.0. Compared to the figure for the 12-monthly period ending June 2013, this is a 8.4 per cent reduction.

Monthly Australian road deaths — last five years, with trend



Data Sources

Data are obtained from

- Transport for NSW
- Vicroads
- Department of Transport and Main Roads, Queensland
- Department for Transport, Energy and Infrastructure, S.A.
- Western Australia Police
- Department of Infrastructure, Energy and Resources, Tasmania
- Department of Transport, Northern Territory
- Department of Territory and Municipal Services, ACT
- Australian Bureau of Statistics (3101.0)

Inquiries

For further information about data in this bulletin, contact:

Bureau of Infrastructure, Transport and Regional Economics

Web : www.bitre.gov.au

Email : roadsafety@infrastructure.gov.au

Road deaths from recent months are preliminary and subject to revision.

© Copyright. Commonwealth of Australia

I. Current month and year to date

Deaths by jurisdiction

Current month	NSW	Vic	Qld	SA	WA	Tas	NT	ACT	Australia
June 2013	32	13	17	13	12	2	4	0	93
June 2014	29	17	18	6	17	2	3	1	93
Per cent change	-9.4	30.8	5.9	-53.8	41.7	0.0	-25.0	-	0.0

Year to date	NSW	Vic	Qld	SA	WA	Tas	NT	ACT	Australia
January 2013 - June 2013	159	112	147	54	85	14	16	4	591
January 2014 - June 2014	174	126	103	43	85	17	21	5	574
Per cent change	9.4	12.5	-29.9	-20.4	0.0	21.4	31.3	25.0	-2.9

2. Yearly deaths — last five 12 monthly periods

Deaths by jurisdiction

12 months ended June	NSW	Vic	Qld	SA	WA	Tas	NT	ACT	Australia
2010	445	288	269	118	183	43	35	20	1,401
2011	355	294	251	111	199	31	44	10	1,295
2012	386	269	278	89	177	19	53	5	1,276
2013	340	255	297	100	179	33	46	11	1,261
2014	354	256	227	87	162	39	42	8	1,175
Latest per cent change	4.1	0.4	-23.6	-13.0	-9.5	18.2	-8.7	-27.3	-6.8
Average trend change per year (per cent)	-4.9	-3.7	-1.7	-6.9	-3.4	-1.3	4.2	-15.9	-3.7

Deaths by road user

12 months ended June	Driver	Passenger	Pedestrian	Motorcyclist ^a	Pedal ^a Cyclist	Total ^b
2010	673	292	177	220	38	1,401
2011	603	274	173	212	33	1,295
2012	558	274	193	218	31	1,276
2013	623	245	148	200	38	1,261
2014	546	207	166	192	58	1,175
Latest per cent change	-12.4	-15.5	12.2	-4.0	52.6	-6.8
Average trend change per year (per cent)	-3.8	-7.7	-2.8	-3.3	10.4	-3.7

a Includes pillion passengers.

b Includes deaths where road user type is unknown.

Deaths by age-group ^a (years)

12 months ended June	<i>0 to 16</i>	<i>17 to 25</i>	<i>26 to 39</i>	<i>40 to 64</i>	<i>65 to 74</i>	<i>≥ 75</i>	<i>Total^b</i>
2010	88	302	319	461	100	130	1,401
2011	70	324	278	403	85	135	1,295
2012	92	271	318	361	87	147	1,276
2013	70	274	263	403	108	142	1,261
2014	59	211	258	383	113	148	1,175
<i>Latest per cent change</i>	-15.7	-23.0	-1.9	-5.0	4.6	4.2	-6.8
<i>Average trend change per year (per cent)</i>	-7.7	-8.5	-4.7	-3.6	5.0	3.1	-3.7

a Note: Age groups were changed in March 2014.

b Includes deaths to persons with age not recorded.

Deaths by gender

12 months ended June	<i>Males</i>	<i>Females</i>	<i>Total^c</i>
2010	1,024	375	1,401
2011	951	343	1,295
2012	908	367	1,276
2013	895	365	1,261
2014	861	312	1,175
<i>Latest per cent change</i>	-3.8	-14.5	-6.8
<i>Average trend change per year (per cent)</i>	-4.0	-3.0	-3.7

c Includes deaths to persons with gender not recorded.

3. Annual deaths per 100,000 population

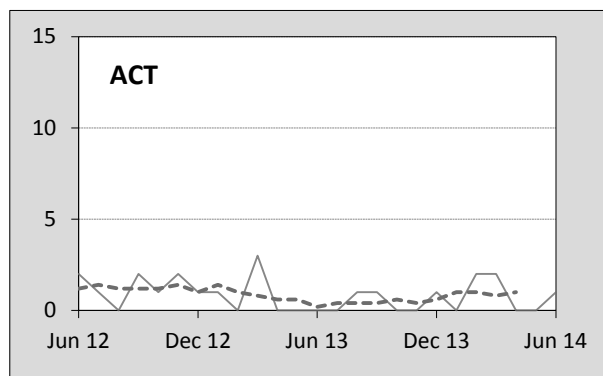
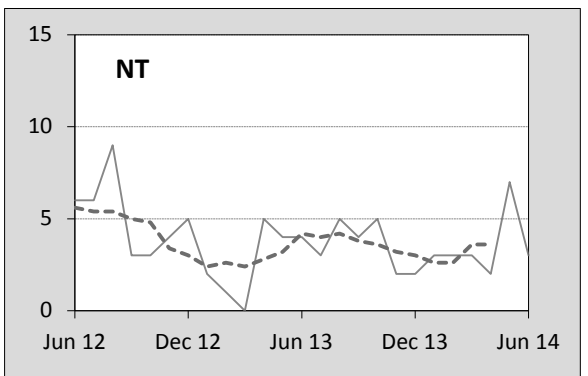
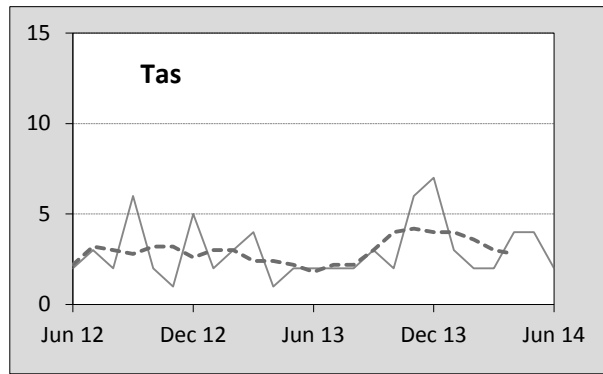
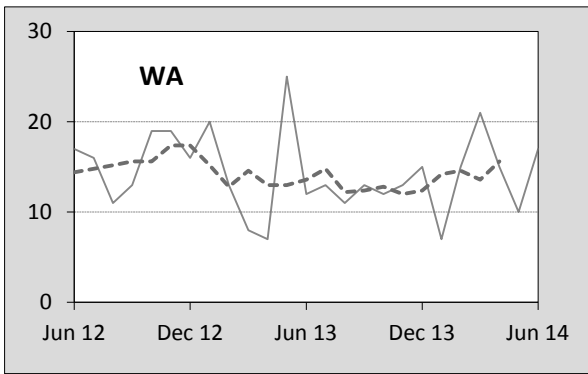
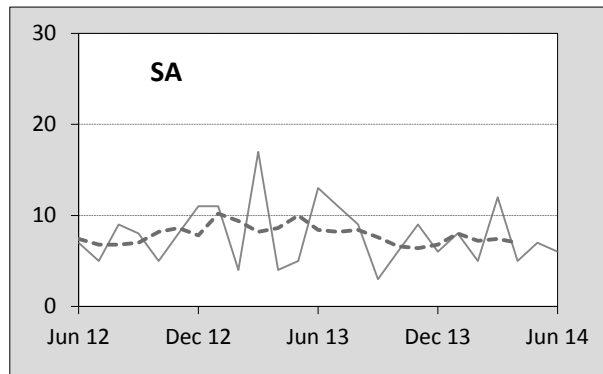
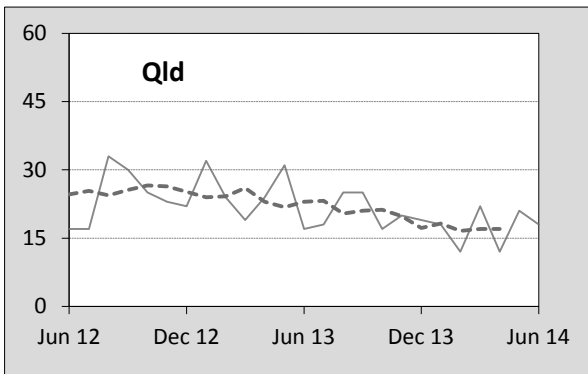
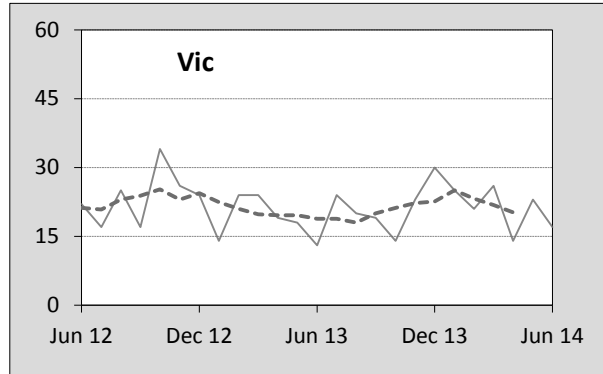
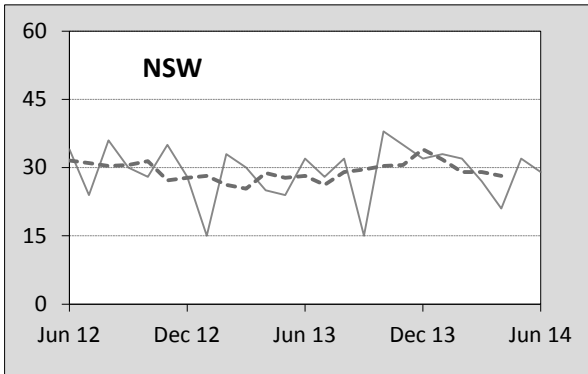
By jurisdiction

12 months ended June	<i>NSW</i>	<i>Vic</i>	<i>Qld</i>	<i>SA</i>	<i>WA</i>	<i>Tas</i>	<i>NT</i>	<i>ACT</i>	<i>Australia</i>
2010	6.27	5.31	6.16	7.29	8.08	8.49	15.37	5.59	6.41
2011	4.94	5.35	5.66	6.80	8.58	6.08	19.11	2.74	5.84
2012	5.32	4.82	6.15	5.40	7.40	3.71	22.78	1.35	5.67
2013	4.62	4.49	6.44	6.02	7.22	6.44	19.28	2.91	5.50
2014	4.74	4.42	4.84	5.19	6.35	7.59	17.31	2.08	5.04
<i>Latest per cent change</i>	2.6	-1.5	-24.9	-13.8	-12.0	17.8	-10.2	-28.4	-8.4
<i>Average trend change per year (per cent)</i>	-6.1	-5.3	-3.5	-7.7	-6.3	-1.7	2.5	-17.4	-5.3

Calendar year	<i>NSW</i>	<i>Vic</i>	<i>Qld</i>	<i>SA</i>	<i>WA</i>	<i>Tas</i>	<i>NT</i>	<i>ACT</i>	<i>Australia</i>
2009	6.44	5.40	7.65	7.40	8.53	12.49	13.72	3.38	6.87
2010	5.67	5.27	5.65	7.25	8.42	6.09	21.76	5.25	6.14
2011	5.04	5.18	6.01	6.28	7.61	4.69	19.46	1.63	5.72
2012	5.05	5.01	6.13	5.68	7.47	6.05	20.77	3.20	5.72
2013	4.58	4.22	5.82	5.87	6.43	7.02	15.34	1.84	5.15
<i>Latest per cent change</i>	-9.4	-15.8	-5.0	3.3	-13.9	15.9	-26.2	-42.6	-9.8

4. Monthly deaths by jurisdiction — last 24 months

— raw
 - - - smoothed (unweighted 5-point moving average)



5. Fatal crashes: counts and characteristics

12 months ended June	Crash type ^a			Posted speed limit				Total ^b
	Single	Multiple	Pedestrian	0 to 60	70 to 90	100	≥ 110	
2010	581	520	171	381	272	442	170	1,272
2011	535	484	171	331	273	410	168	1,190
2012	499	475	189	394	259	372	126	1,163
2013	541	460	147	365	267	361	145	1,148
2014	472	450	164	330	234	356	133	1,086
<i>Average trend change per year (per cent)</i>	-4.0	-3.3	-2.3	-1.9	-3.2	-5.4	-6.2	-3.5

12 months ended June	Day of week ^c		Time of Day ^d	
	Weekday	Weekend	Day	Night
2010	766	506	749	523
2011	692	498	704	486
2012	706	457	730	433
2013	694	454	713	435
2014	670	416	683	403
<i>Average trend change per year (per cent)</i>	-2.6	-4.7	-1.7	-6.1

a 'Single' and 'Multiple' refer to the number of vehicles involved in a fatal crash where there is no pedestrian killed.

b Includes crashes where speed limit is unknown

c 'Weekday' refers to 6am Monday through to 5:59pm Friday.

d 'Day' refers to 6am through to 5:59 pm.

Appendix

Definition

The road safety agencies in each jurisdiction use detailed criteria to define road crashes and road deaths. Briefly, a death is classified as resulting from a road crash if the crash occurred on a public road, is unintentional and the death occurred within 30 days from injuries sustained in the crash.

Population rates

Rates per population are based on the deaths to the current 12 monthly period, and the population at the midpoint of the period. The population at midpoints are interpolated if necessary.

Average trend change (% per year)

Calculated by fitting an exponential curve through the five data points, and quoting the constant (annual) change of this curve.

Other sources for the tables in this bulletin

The underlying database used to produce this bulletin — the *Australian Road Deaths Database* is available for online querying and data extraction at

http://www.bitre.gov.au/statistics/safety/fatal_road_crash_database.aspx