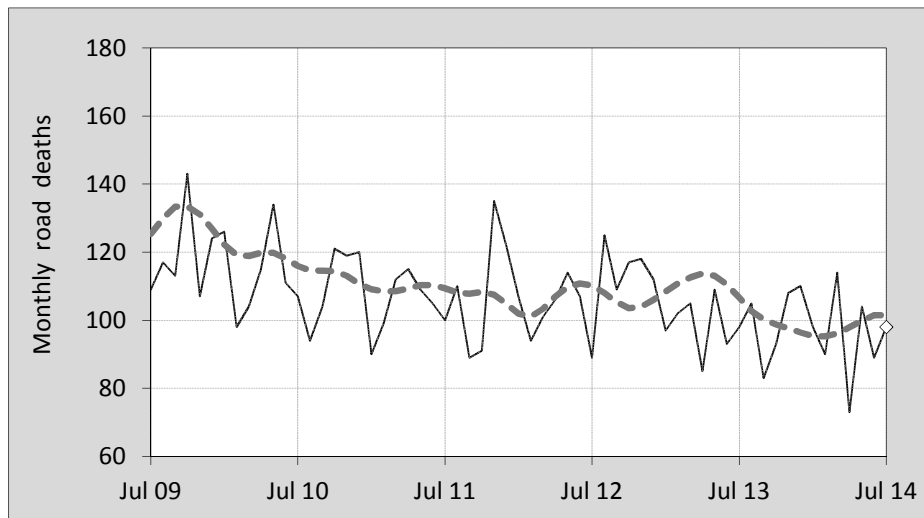




This month's key figures

- There was a total of 98 road deaths during the month of July 2014. In comparison to the average for July over the previous five years, the current figure is 2.6 per cent lower.
- During the 12 months ended July there were 1,165 road deaths. This is a 8.3 per cent reduction compared to the total for the 12-monthly period ended July 2013.
- Presently the rate of annual deaths per 100,000 population stands at 5.0. Compared to the figure for the 12-monthly period ending July 2013, this is a 9.8 per cent reduction.

Monthly Australian road deaths — last five years, with trend



Data Sources

Data are obtained from

- Transport for NSW
- Vicroads
- Department of Transport and Main Roads, Queensland
- Department for Transport, Energy and Infrastructure, S.A.
- Western Australia Police
- Department of Infrastructure, Energy and Resources, Tasmania
- Department of Transport, Northern Territory
- Department of Territory and Municipal Services, ACT
- Australian Bureau of Statistics (3101.0)

Inquiries

For further information about data in this bulletin, contact:

Bureau of Infrastructure, Transport and
Regional Economics
Web : www.bitre.gov.au
Email : roadsafety@infrastructure.gov.au

Road deaths from recent months are preliminary and subject to revision.

© Copyright. Commonwealth of Australia

I. Deaths by jurisdiction

Table I.1 Current month

Current month	NSW	Vic	Qld	SA	WA	Tas	NT	ACT	Australia
July 2013	27	24	18	11	13	2	3	0	98
July 2014	22	23	21	8	17	4	3	0	98
Per cent change	-18.5	-4.2	16.7	-27.3	30.8	100.0	0.0	-	0.0

Table I.2 Year to date

Year to date	NSW	Vic	Qld	SA	WA	Tas	NT	ACT	Australia
January 2013 - July 2013	186	136	165	65	98	16	19	4	689
January 2014 - July 2014	188	149	126	51	102	21	24	5	666
Per cent change	1.1	9.6	-23.6	-21.5	4.1	31.3	26.3	25.0	-3.3

Table I.3 Year ending July

12 months ended July	NSW	Vic	Qld	SA	WA	Tas	NT	ACT	Australia
2010	441	295	260	120	188	32	42	21	1,399
2011	361	293	253	111	190	29	43	8	1,288
2012	381	261	270	87	188	22	50	6	1,265
2013	343	262	298	106	176	32	43	10	1,270
2014	337	255	232	84	166	41	42	8	1,165
Latest per cent change	-1.7	-2.7	-22.1	-20.8	-5.7	28.1	-2.3	-20.0	-8.3
Average trend change per year (per cent)	-5.7	-4.0	-0.6	-7.3	-3.2	6.1	0.0	-15.7	-3.7

2. Deaths by road user, age-group and gender

Table 2.1 By road user

12 months ended July	Driver	Passenger	Pedestrian	Motorcyclist ^a	Pedal ^a cyclist	Total ^b
2010	666	294	180	222	36	1,399
2011	609	265	172	207	34	1,288
2012	558	268	187	221	30	1,265
2013	622	249	150	202	39	1,270
2014	532	213	165	193	57	1,165
Latest per cent change	-14.5	-14.5	10.0	-4.5	46.2	-8.3
Average trend change per year (per cent)	-4.2	-6.8	-3.1	-3.0	11.1	-3.7

Table 2.2 By age-group^c (years)

12 months ended July	0 to 16	17 to 25	26 to 39	40 to 64	65 to 74	≥ 75	Total ^b
2010	84	307	319	453	105	130	1,399
2011	72	323	273	402	86	132	1,288
2012	89	267	311	371	80	147	1,265
2013	70	277	264	396	109	153	1,270
2014	62	210	252	381	117	141	1,165
Latest per cent change	-11.4	-24.2	-4.5	-3.8	7.3	-7.8	-8.3
Average trend change per year (per cent)	-6.2	-8.7	-4.9	-3.5	4.6	3.1	-3.7

2. Deaths by road user, age-group and gender (continued)

Table 2.3 By gender

12 months ended July	<i>Males</i>	<i>Females</i>	<i>Total^b</i>
2010	1,016	381	1,399
2011	939	348	1,288
2012	903	361	1,265
2013	910	359	1,270
2014	843	321	1,165
<i>Latest per cent change</i>	-7.4	-10.6	-8.3
<i>Average trend change per year (per cent)</i>	-4.0	-3.1	-3.7

a Includes pillion passengers

b Includes deaths to persons with tabled categories not recorded.

c Age groups were changed in March 2014.

3. Annual deaths per 100,000 population

Table 3.1 Year ended August

12 months ended July	<i>NSW</i>	<i>Vic</i>	<i>Qld</i>	<i>SA</i>	<i>WA</i>	<i>Tas</i>	<i>NT</i>	<i>ACT</i>	<i>Australia</i>
2010	6.20	5.43	5.94	7.41	8.29	6.31	18.42	5.85	6.39
2011	5.02	5.32	5.69	6.79	8.17	5.68	18.67	2.19	5.80
2012	5.24	4.67	5.96	5.28	7.83	4.30	21.45	1.61	5.61
2013	4.66	4.60	6.45	6.37	7.08	6.24	18.00	2.64	5.53
2014	4.51	4.40	4.94	5.01	6.50	7.97	17.31	2.08	4.99
<i>Latest per cent change</i>	-3.2	-4.3	-23.4	-21.4	-8.2	27.7	-3.8	-21.2	-9.8
<i>Average trend change per year (per cent)</i>	-6.9	-5.5	-2.4	-8.1	-6.1	5.8	-1.6	-17.1	-5.3

Table 3.2 Calendar year period

Calendar year	<i>NSW</i>	<i>Vic</i>	<i>Qld</i>	<i>SA</i>	<i>WA</i>	<i>Tas</i>	<i>NT</i>	<i>ACT</i>	<i>Australia</i>
2009	6.44	5.40	7.65	7.40	8.53	12.49	13.72	3.38	6.87
2010	5.67	5.27	5.65	7.25	8.42	6.09	21.76	5.25	6.14
2011	5.04	5.18	6.01	6.28	7.61	4.69	19.46	1.63	5.72
2012	5.05	5.01	6.13	5.68	7.47	6.05	20.77	3.20	5.72
2013	4.52	4.22	5.82	5.87	6.43	7.02	15.34	1.84	5.14
<i>Latest per cent change</i>	-10.5	-15.8	-5.0	3.3	-13.9	15.9	-26.2	-42.6	-10.1

4. Monthly deaths by jurisdiction — last 24 months

— raw
 - - - smoothed
 (unweighted 5-point moving average)

Figure 4.1 NSW

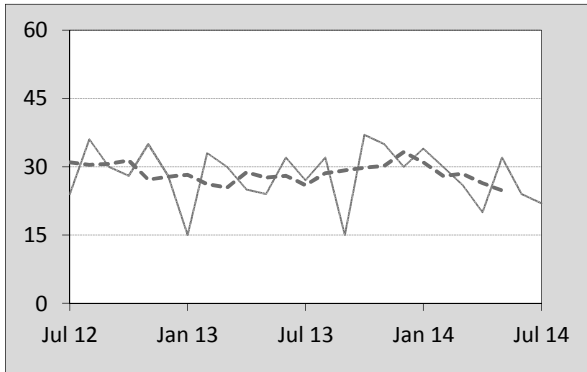


Figure 4.2 Vic

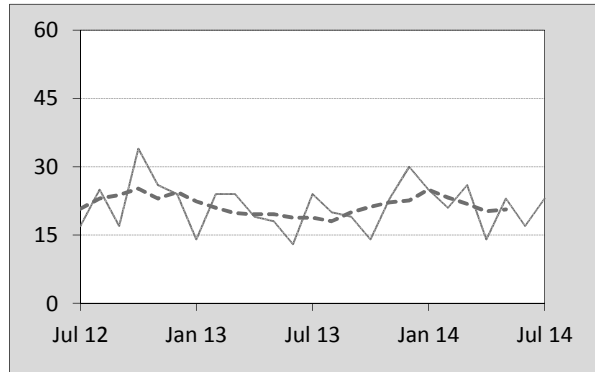


Figure 4.3 Qld

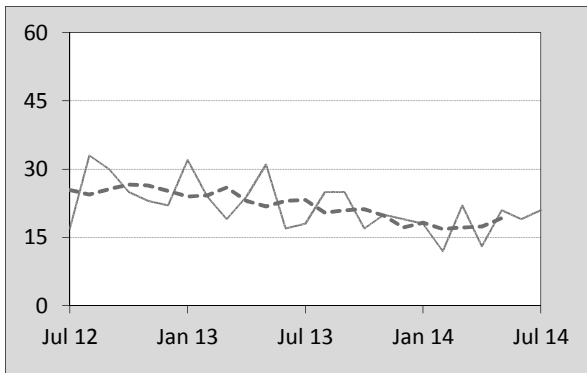


Figure 4.4 SA

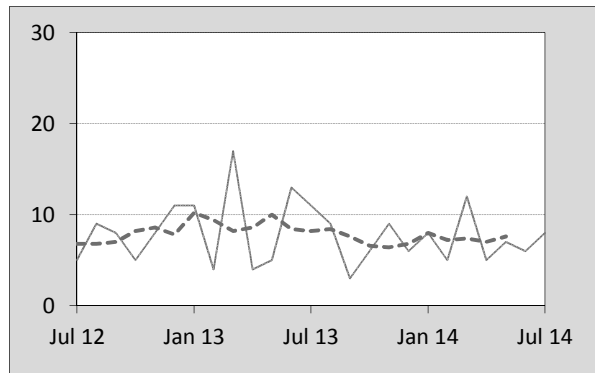


Figure 4.5 WA

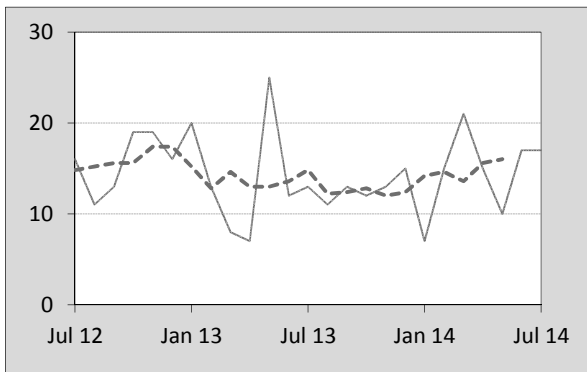


Figure 4.6 Tas

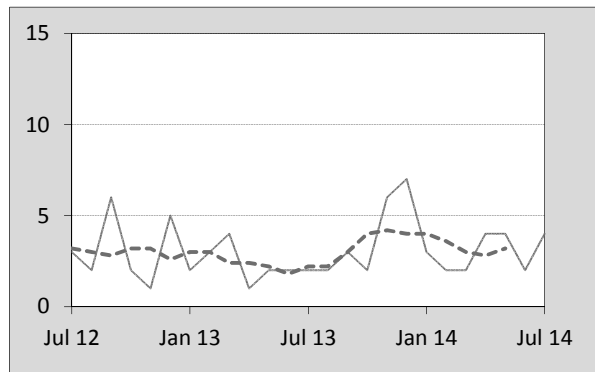


Figure 4.7 NT

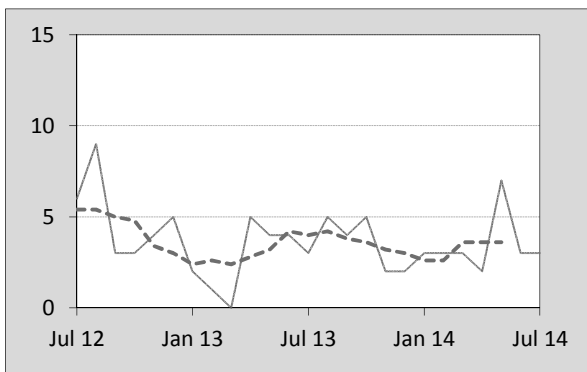
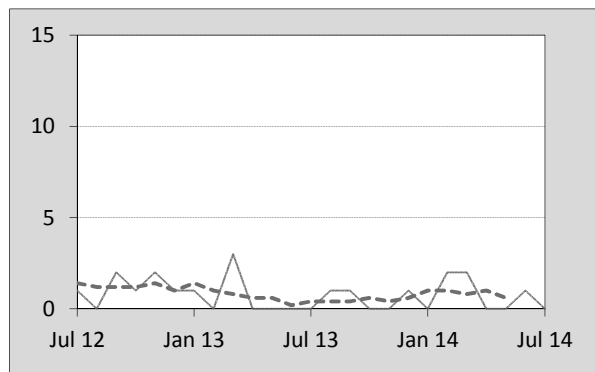


Figure 4.8 ACT



5. Fatal crashes: counts and characteristics

Table 5.1 By Crash type and Posted speed limit

12 months ended July	Crash type ^a			Posted speed limit				Total ^b
	Single	Multiple	Pedestrian	0 to 60	70 to 90	100	≥ 110	
2010	583	519	175	379	272	446	173	1,277
2011	527	483	170	333	271	408	160	1,180
2012	498	475	183	398	255	363	127	1,156
2013	543	463	149	371	263	366	143	1,155
2014	469	442	163	322	241	353	137	1,074
Latest per cent change	-13.6	-4.5	9.4	-13.2	-8.4	-3.6	-4.2	-7.0
Average trend change per year (per cent)	-4.0	-3.6	-2.7	-2.2	-2.7	-5.6	-5.6	-3.6

Table 5.2 By Day of week and Time of day

12 months ended July	Day of week ^c		Time of Day ^d	
	Weekday	Weekend	Day	Night
2010	750	527	751	526
2011	701	479	695	485
2012	698	458	725	431
2013	709	446	724	431
2014	647	427	676	398
Latest per cent change	-8.7	-4.3	-6.6	-7.7
Average trend change per year (per cent)	-2.8	-4.8	-1.7	-6.5

- a 'Single' and 'Multiple' refer to the number of vehicles involved in a fatal crash where there is no pedestrian killed.
 b Includes crashes where speed limit is unknown
 c 'Weekday' refers to 6am Monday through to 5:59pm Friday.
 d 'Day' refers to 6am through to 5:59 pm.

Appendix

Definition

The road safety agencies in each jurisdiction use detailed criteria to define road crashes and road deaths. Briefly, a death is classified as resulting from a road crash if the crash occurred on a public road, is unintentional and the death occurred within 30 days from injuries sustained in the crash.

Population rates

Rates per population are based on the deaths to the current 12 monthly period, and the population at the midpoint of the period. The population at midpoints are interpolated if necessary.

Average trend change (% per year)

Calculated by fitting an exponential curve through the five data points, and quoting the constant (annual) change of this curve.

Other sources for the tables in this bulletin

The underlying database used to produce this bulletin — *the Australian Road Deaths Database* is available for data extraction at <http://www.bitre.gov.au/statistics/safety/fatal_road_crash_database.aspx>.

Road deaths from recent months are preliminary and subject to revision.