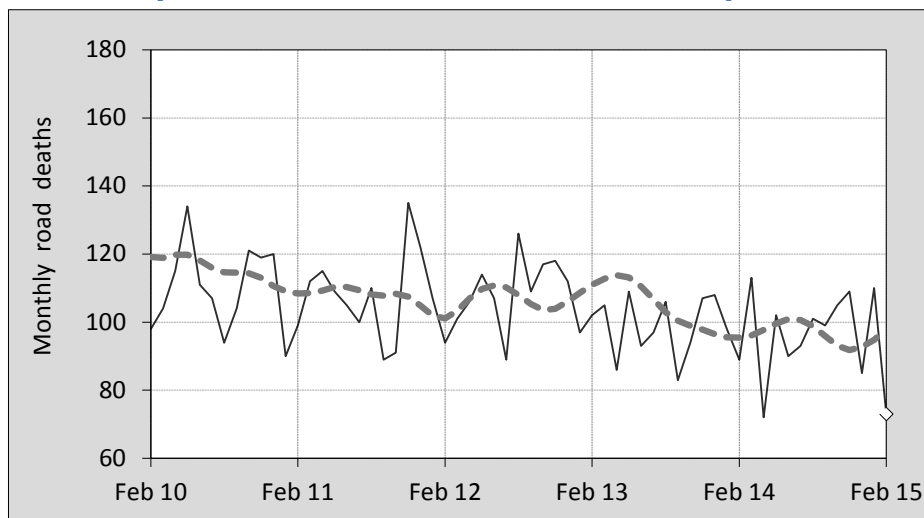




## This month's key figures

- There was a total of 73 road deaths during the month of February 2015. In comparison to the average for February over the previous five years, the current figure is 24.3 per cent lower.
- During the 12 months ended February there were 1,152 road deaths. This is a 2.0 per cent reduction compared to the total for the 12-monthly period ended February 2014.
- Presently the rate of annual deaths per 100,000 population stands at 4.9. Compared to the figure for the 12-monthly period ending February 2014, this is a 3.4 per cent reduction.

## Monthly Australian road deaths — last five years, with trend



### Data Sources

Data are obtained from

- Transport for NSW
- Vicroads
- Department of Transport and Main Roads, Queensland
- Department of Planning, Transport and Infrastructure, S.A.
- Western Australia Police
- Department of State Growth, Tasmania
- Department of Transport, Northern Territory
- Territory and Municipal Services Directorate, ACT
- Australian Bureau of Statistics (3101.0)

### Inquiries

For further information about data in this bulletin, contact:

Bureau of Infrastructure, Transport and  
Regional Economics  
Web : [www.bitre.gov.au](http://www.bitre.gov.au)  
Email : [roadsafety@infrastructure.gov.au](mailto:roadsafety@infrastructure.gov.au)

Road deaths from recent months are preliminary and subject to revision.

© Copyright. Commonwealth of Australia

## 1. Deaths by jurisdiction

**Table 1.1 Current month**

Current month	NSW	Vic	Qld	SA	WA	Tas	NT	ACT	Australia
February 2014	29	21	12	5	15	2	3	2	89
February 2015	16	21	11	4	13	5	3	0	73
Per cent change	-44.8	0.0	-8.3	-20.0	-13.3	150.0	0.0	-100.0	-18.0

**Table 1.2 Year to date**

Year to date	NSW	Vic	Qld	SA	WA	Tas	NT	ACT	Australia
January 2014 - February 2014	63	46	30	13	22	5	6	2	187
January 2015 - February 2015	55	48	27	17	23	8	4	1	183
Per cent change	-12.7	4.3	-10.0	30.8	4.5	60.0	-33.3	-50.0	-2.1

**Table 1.3 Year ending February**

12 months ended February	NSW	Vic	Qld	SA	WA	Tas	NT	ACT	Australia
2011	386	275	247	109	207	30	46	18	1,318
2012	363	299	278	97	176	24	48	4	1,289
2013	360	270	294	94	189	31	47	13	1,298
2014	348	251	245	96	151	36	40	8	1,175
2015	304	251	220	111	182	38	37	9	1,152
Latest per cent change	-12.6	0.0	-10.2	15.6	20.5	5.6	-7.5	12.5	-2.0
Average trend change per year (per cent)	-5.1	-3.5	-3.5	0.3	-4.0	9.2	-6.0	-6.7	-3.6

## 2. Deaths by road user, age-group and gender

**Table 2.1 By road user**

12 months ended February	Driver	Passenger	Pedestrian	Motorcyclist <sup>b</sup>	Pedal <sup>b</sup> cyclist	Total <sup>c</sup>
2011	613	277	165	226	36	1,318
2012	571	290	192	200	34	1,289
2013	622	248	163	225	36	1,298
2014	544	215	156	207	49	1,175
2015	532	222	152	199	43	1,152
Latest per cent change	-2.2	3.3	-2.6	-3.9	-12.2	-2.0
Average trend change per year (per cent)	-3.3	-2.8	-2.8	-2.8	7.5	-3.6

**Table 2.2 By age-group<sup>a</sup> (years)**

12 months ended February	0 to 16	17 to 25	26 to 39	40 to 64	65 to 74	≥ 75	Total <sup>c</sup>
2011	68	315	289	421	106	119	1,318
2012	95	293	298	383	77	143	1,289
2013	73	280	294	402	103	145	1,298
2014	64	220	238	385	112	156	1,175
2015	64	230	254	348	115	135	1,152
Latest per cent change	0.0	4.5	6.7	-9.6	2.7	-13.5	-2.0
Average trend change per year (per cent)	-5.0	-8.7	-4.7	-3.7	5.5	3.5	-3.6

## 2. Deaths by road user, age-group and gender (continued)

**Table 2.3** By gender

<b>12 months ended February</b>	<i>Males</i>	<i>Females</i>	<i>Total<sup>d</sup></i>
2011	951	366	1,318
2012	940	347	1,289
2013	921	376	1,298
2014	847	328	1,175
2015	818	332	1,152
<i>Latest per cent change</i>	-3.4	1.2	-2.0
<i>Average trend change per year (per cent)</i>	-4.0	-2.5	-3.6

a Age groups were changed in March 2014.

b Includes pillion passengers

c Includes deaths to persons with either age or road ruser type not recorded.

d Includes deaths to persons with gender not recorded.

## 3. Annual deaths per 100,000 population

**Table 3.1** Year ended February

<b>12 months ended February</b>	<i>NSW</i>	<i>Vic</i>	<i>Qld</i>	<i>SA</i>	<i>WA</i>	<i>Tas</i>	<i>NT</i>	<i>ACT</i>	<i>Australia</i>
2011	5.39	5.02	5.59	6.69	9.00	5.89	19.98	4.97	5.97
2012	5.02	5.38	6.19	5.91	7.44	4.69	20.68	1.08	5.75
2013	4.92	4.78	6.41	5.67	7.71	6.05	19.81	3.45	5.69
2014	4.68	4.36	5.25	5.74	5.97	7.01	16.45	2.09	5.07
2015	4.04	4.29	4.65	6.58	7.06	7.38	15.06	2.33	4.89
<i>Latest per cent change</i>	-13.8	-1.7	-11.5	14.6	18.2	5.2	-8.4	11.3	-3.4
<i>Average trend change per year (per cent)</i>	-6.3	-5.2	-5.2	-0.6	-6.8	8.9	-7.6	-8.2	-5.1

**Table 3.2** Calendar year period

<b>Calendar year</b>	<i>NSW</i>	<i>Vic</i>	<i>Qld</i>	<i>SA</i>	<i>WA</i>	<i>Tas</i>	<i>NT</i>	<i>ACT</i>	<i>Australia</i>
2010	5.67	5.27	5.65	7.25	8.42	6.09	21.76	5.25	6.14
2011	5.04	5.18	6.01	6.28	7.61	4.69	19.46	1.63	5.72
2012	5.05	5.01	6.13	5.68	7.51	6.05	20.77	3.20	5.72
2013	4.49	4.24	5.83	5.87	6.43	7.02	15.26	1.84	5.13
2014	4.15	4.26	4.72	6.35	7.03	6.80	15.91	2.59	4.92
<i>Latest per cent change</i>	-7.7	0.6	-18.9	8.2	9.4	-3.1	4.3	41.1	-4.1

4. Monthly deaths by jurisdiction — last 24 months

— raw  
 - - - smoothed  
 (unweighted 5-point moving average)

Figure 4.1 NSW

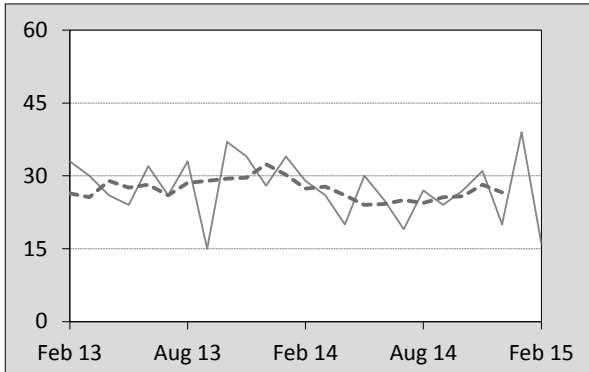


Figure 4.2 Vic

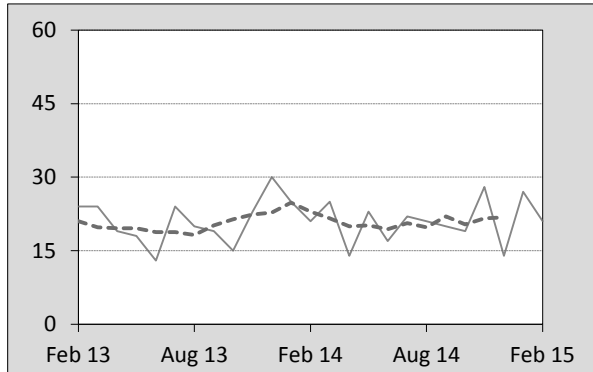


Figure 4.3 Qld

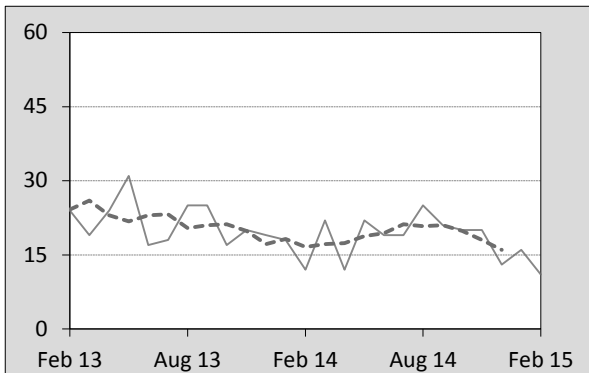


Figure 4.4 SA

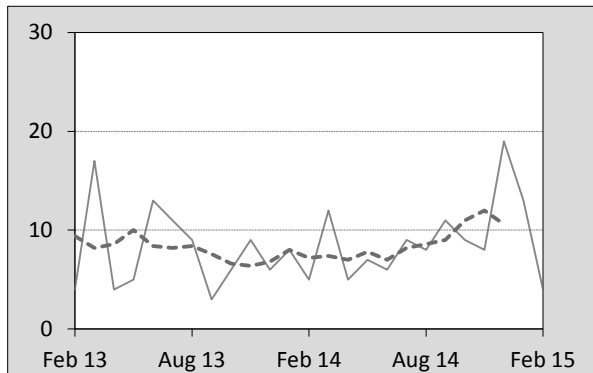


Figure 4.5 WA

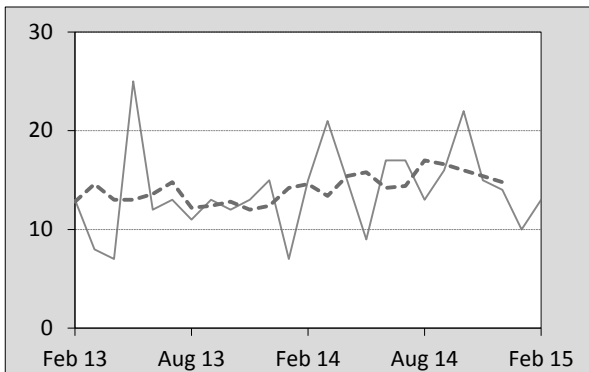


Figure 4.6 Tas

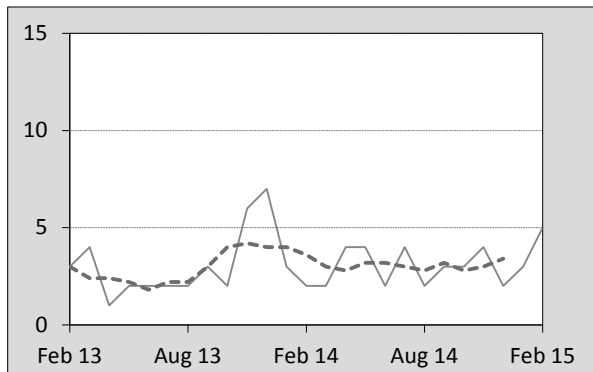


Figure 4.7 NT

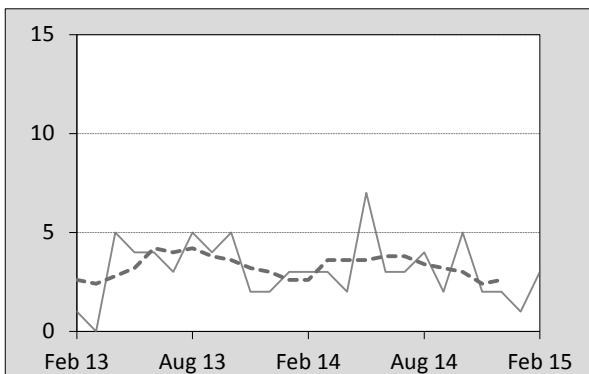
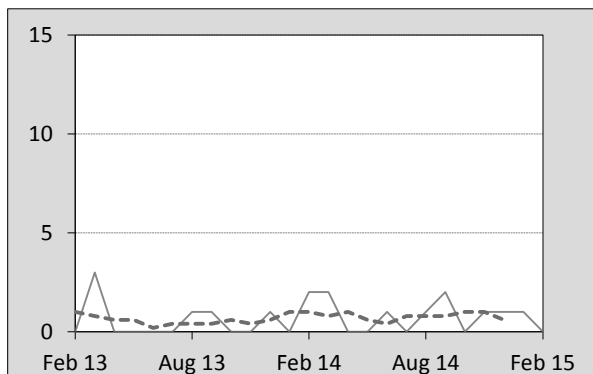


Figure 4.8 ACT



## 5. Fatal crashes: counts and characteristics

**Table 5.1** By Crash type and Posted speed limit

12 months ended February	Crash type <sup>a</sup>			Posted speed limit				Total <sup>b</sup>
	Single	Multiple	Pedestrian	0 to 60	70 to 90	100	≥ 110	
2011	530	521	163	361	272	408	168	1,214
2012	518	460	188	354	248	410	142	1,166
2013	527	495	163	410	273	350	141	1,185
2014	499	434	154	324	251	370	130	1,087
2015	464	439	150	325	214	349	132	1,053
Latest per cent change	-7.0	1.2	-2.6	0.3	-14.7	-5.7	1.5	-3.1
Average trend change per year (per cent)	-3.0	-3.9	-3.6	-2.9	-4.6	-4.1	-5.5	-3.5

**Table 5.2** By Day of week and Time of day

12 months ended February	Day of week <sup>c</sup>		Time of Day <sup>d</sup>	
	Weekday	Weekend	Day	Night
2011	701	513	723	491
2012	692	474	711	455
2013	729	456	733	452
2014	656	431	695	392
2015	660	393	670	383
Latest per cent change	0.6	-8.8	-3.6	-2.3
Average trend change per year (per cent)	-1.7	-6.1	-1.7	-6.3

a 'Single' and 'Multiple' refer to the number of vehicles involved in a fatal crash where there is no pedestrian killed.

b Includes crashes where speed limit is unknown

c 'Weekday' refers to 6am Monday through to 5:59pm Friday.

d 'Day' refers to 6am through to 5:59 pm.

## Appendix

### Definition

The road safety agencies in each jurisdiction use detailed criteria to define road crashes and road deaths. Briefly, a death is classified as resulting from a road crash if the crash occurred on a public road, is unintentional and the death occurred within 30 days from injuries sustained in the crash.

### Population rates

Rates per population are based on the deaths to the current 12 monthly period, and the population at the midpoint of the period. The population at midpoints are interpolated if necessary.

### Average trend change ( % per year )

Calculated by fitting an exponential curve through the five data points, and quoting the constant (annual) change of this curve.

### Other sources for the tables in this bulletin

The underlying database used to produce this bulletin — *the Australian Road Deaths Database* is available for data extraction at <[http://www.bitre.gov.au/statistics/safety/fatal\\_road\\_crash\\_database.aspx](http://www.bitre.gov.au/statistics/safety/fatal_road_crash_database.aspx)>.

Road deaths from recent months are preliminary and subject to revision.