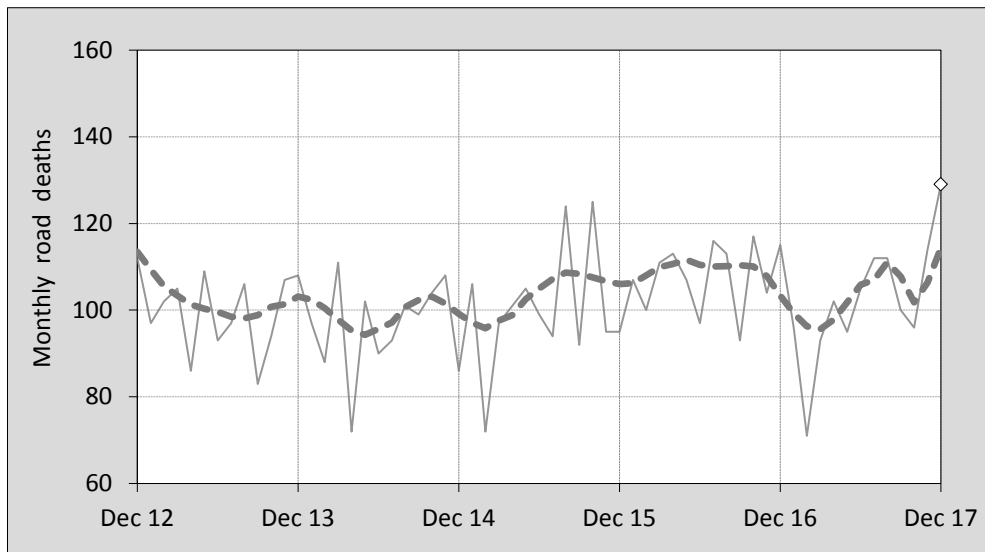




This month's key figures

- There was a total of 129 road deaths during the month of December 2017. In comparison to the average for December over the previous five years, the current figure is 25.0 per cent higher.
- During the 12 months ended December 2017, there were 1,225 road deaths. This is a 5.3 per cent decrease compared to the total for the 12-month period ended December 2016.
- Presently, the rate of annual deaths per 100,000 population stands at 5.0. Compared to the figure for the 12-month period ending December 2016, this is a 6.8 per cent decrease.

Monthly Australian road deaths — last five years, with trend



Data Sources

Data are obtained from

- Transport for NSW
- Vicroads
- Department of Transport and Main Roads, Queensland
- Department of Planning, Transport and Infrastructure, S.A.
- Western Australia Police
- Department of State Growth, Tasmania
- Department of Transport, Northern Territory
- Transport Canberra and City Services Directorate, ACT
- Australian Bureau of Statistics (3101.0)

Inquiries

For further information about data in this bulletin, contact:

Bureau of Infrastructure, Transport and Regional Economics
 Web : www.bitre.gov.au
 Email : roadsafety@infrastructure.gov.au

Road deaths from recent months are preliminary and subject to revision.

See www.roadsafety.gov.au for performance indicators used to monitor progress under the National Road Safety Strategy 2011-2020 (NRSS).

© Copyright. Commonwealth of Australia

1. Deaths by jurisdiction

Table 1.1 Current month

Current month	NSW	Vic	Qld	SA	WA	Tas	NT	ACT	Australia
December 2016	28	25	30	6	19	3	4	0	115
December 2017	40	28	24	9	21	3	4	0	129
Per cent change	42.9	12.0	-20.0	50.0	10.5	0.0	0.0	-	12.2

Table 1.2 Year to date

Year to date	NSW	Vic	Qld	SA	WA	Tas	NT	ACT	Australia
January 2016 - December 2016	380	290	251	86	193	37	45	11	1,293
January 2017 - December 2017	392	253	248	101	159	36	31	5	1,225
Per cent change	3.2	-12.8	-1.2	17.4	-17.6	-2.7	-31.1	-54.5	-5.3

Table 1.3 Year ending December

12 months ended December	NSW	Vic	Qld	SA	WA	Tas	NT	ACT	Australia
2013	333	243	271	98	162	36	37	7	1,187
2014	307	248	223	108	183	33	39	10	1,151
2015	350	252	243	102	160	34	49	15	1,205
2016	380	290	251	86	193	37	45	11	1,293
2017	392	253	248	101	159	36	31	5	1,225
Latest per cent change	3.2	-12.8	-1.2	17.4	-17.6	-2.7	-31.1	-54.5	-5.3
Average trend change per year (per cent)	5.5	2.4	-0.6	-1.7	0.2	1.2	-2.1	-5.6	1.8

2. Deaths by road user, age-group and gender

Table 2.1 By road user

12 months ended December	Driver	Passenger	Pedestrian	Motorcyclist ^b	Pedal ^b cyclist	Total ^c
2013	557	204	158	213	50	1,187
2014	533	228	151	191	45	1,151
2015	555	251	162	203	31	1,205
2016	623	208	182	249	29	1,293
2017	575	235	159	211	38	1,225
Latest per cent change	-7.7	13.0	-12.6	-15.3	31.0	-5.3
Average trend change per year (per cent)	2.2	1.9	2.0	2.5	-9.4	1.8

Table 2.2 By age-group^a (years)

12 months ended December	0 to 16	17 to 25	26 to 39	40 to 64	65 to 74	≥ 75	Total ^c
2013	66	230	243	374	118	156	1,187
2014	65	235	251	359	109	130	1,151
2015	65	225	272	373	118	152	1,205
2016	60	265	290	412	103	163	1,293
2017	48	243	240	392	124	176	1,225
Latest per cent change	-20.0	-8.3	-17.2	-4.9	20.4	8.0	-5.3
Average trend change per year (per cent)	-6.9	2.3	1.2	2.3	0.4	4.8	1.8

2. Deaths by road user, age-group and gender (continued)

Table 2.3 By gender

12 months ended December	<i>Males</i>	<i>Females</i>	<i>Total^d</i>
2013	852	334	1,187
2014	819	331	1,151
2015	866	339	1,205
2016	955	337	1,293
2017	879	324	1,225
<i>Latest per cent change</i>	-8.0	-3.9	-5.3
<i>Average trend change per year (per cent)</i>	2.2	-0.4	1.8

a Age groups were changed in March 2014.

b Includes pillion passengers.

c Includes deaths to persons with either age or road user type not recorded.

d Includes deaths to persons with gender not recorded.

3. Annual deaths per 100,000 population

Table 3.1 Year ended December

12 months ended December	<i>NSW</i>	<i>Vic</i>	<i>Qld</i>	<i>SA</i>	<i>WA</i>	<i>Tas</i>	<i>NT</i>	<i>ACT</i>	<i>Australia</i>
2013	4.49	4.21	5.82	5.86	6.50	7.02	15.24	1.82	5.13
2014	4.08	4.20	4.72	6.40	7.25	6.42	16.01	2.57	4.90
2015	4.59	4.18	5.08	5.99	6.29	6.60	20.00	3.78	5.05
2016	4.91	4.69	5.18	5.02	7.54	7.15	18.31	2.73	5.34
2017	4.99	4.00	5.03	5.86	6.16	6.91	12.60	1.22	4.98
<i>Latest per cent change</i>	1.6	-14.8	-2.8	16.7	-18.3	-3.3	-31.2	-55.3	-6.8
<i>Average trend change per year (per cent)</i>	4.0	0.1	-2.0	-2.4	-0.7	0.8	-2.4	-7.2	0.3

Table 3.2 Calendar year period

Calendar year	<i>NSW</i>	<i>Vic</i>	<i>Qld</i>	<i>SA</i>	<i>WA</i>	<i>Tas</i>	<i>NT</i>	<i>ACT</i>	<i>Australia</i>
2013	4.49	4.21	5.82	5.86	6.50	7.02	15.24	1.82	5.13
2014	4.08	4.20	4.72	6.40	7.25	6.42	16.01	2.57	4.90
2015	4.59	4.18	5.08	5.99	6.29	6.60	20.00	3.78	5.05
2016	4.91	4.69	5.18	5.02	7.54	7.15	18.31	2.73	5.34
2017	4.99	4.00	5.03	5.86	6.16	6.91	12.60	1.22	4.98
<i>Latest per cent change</i>	1.6	-14.8	-2.8	16.7	-18.3	-3.3	-31.2	-55.3	-6.8

4. Monthly deaths by jurisdiction — last 24 months

— raw
 - - - smoothed
 (13-point moving average)

Figure 4.1 NSW

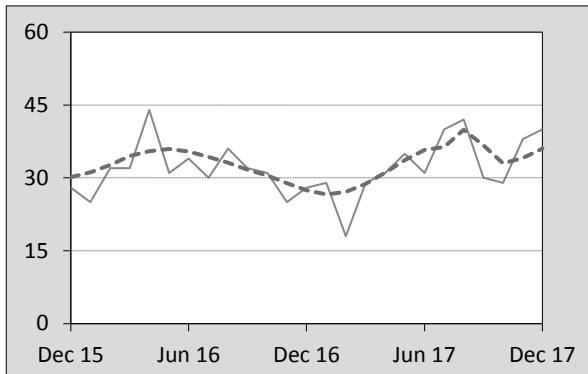


Figure 4.2 Vic

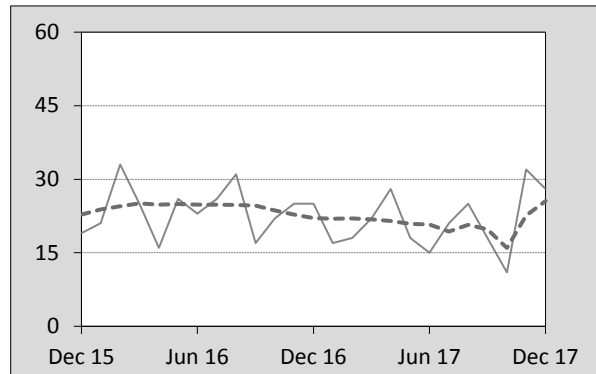


Figure 4.3 Qld

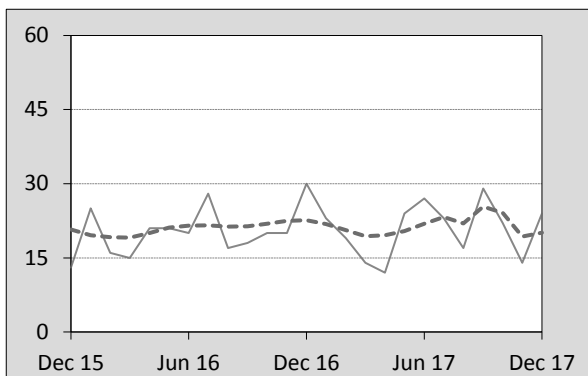


Figure 4.4 SA

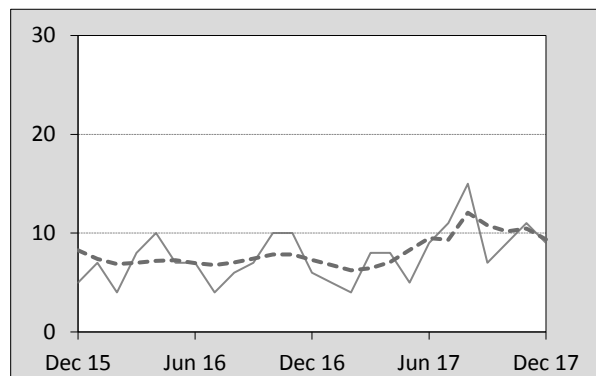


Figure 4.5 WA

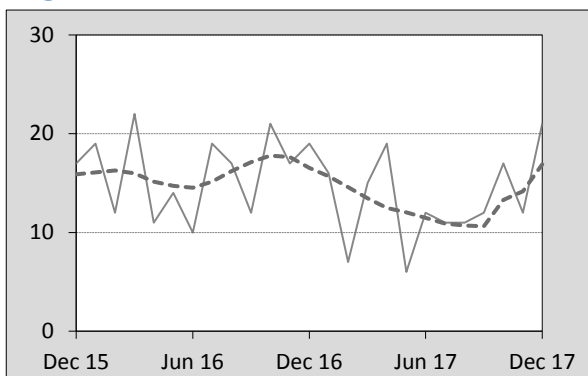


Figure 4.6 Tas

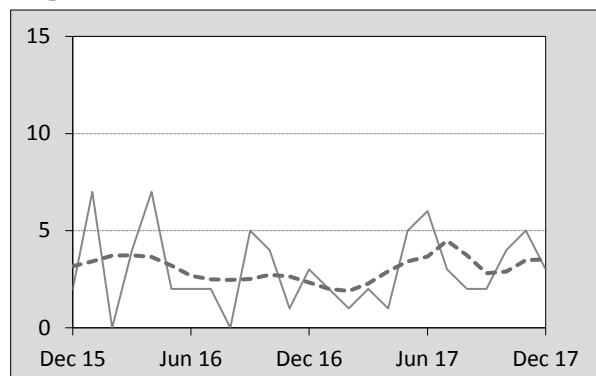


Figure 4.7 NT

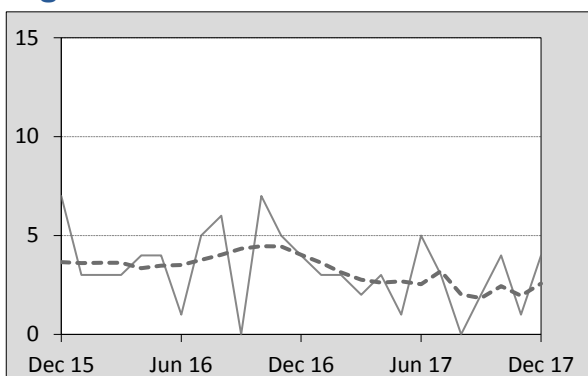
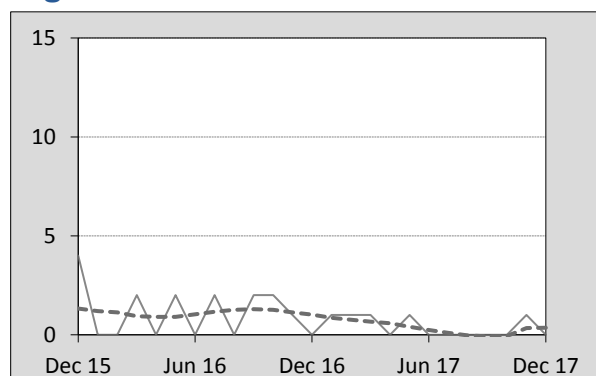


Figure 4.8 ACT



5. Fatal crashes: counts and characteristics

Table 5.1 By Crash type and Posted speed limit

12 months ended December	Crash type ^a			Posted speed limit						Total ^b
	Single	Multiple	Pedestrian	40	50	60	70 to 90	100	≥ 110	
2013	515	430	156	12	131	202	251	368	124	1,101
2014	464	438	149	15	111	192	229	356	134	1,051
2015	490	450	161	15	113	222	249	346	141	1,101
2016	529	502	168	16	133	215	290	370	168	1,199
2017	501	486	144	22	148	195	236	335	137	1,131
Latest per cent change	-5.3	-3.2	-14.3	37.5	11.3	-9.3	-18.6	-9.5	-18.5	-5.7
Average trend change per year (per cent)	0.8	3.9	-0.4	13.6	4.3	0.4	1.1	-1.5	4.3	1.9

Table 5.2 By Day of week and Time of day

12 months ended December	Day of week ^c		Time of Day ^d	
	Weekday	Weekend	Day	Night
2013	654	447	694	407
2014	657	394	664	387
2015	677	424	678	423
2016	720	479	715	484
2017	716	415	720	411
Latest per cent change	-0.6	-13.4	0.7	-15.1
Average trend change per year (per cent)	2.8	0.5	1.5	2.5

a 'Single' and 'Multiple' refer to the number of vehicles involved in a fatal crash where there is no pedestrian killed.

b Includes crashes where speed limit is unknown or where the posted speed limit is 30km/hr or less.

c 'Weekday' refers to 6am Monday through to 5:59pm Friday.

d 'Day' refers to 6am through to 5:59 pm.

Appendix

Definition

The road safety agencies in each jurisdiction use detailed criteria to define road crashes and road deaths. Briefly, a death is classified as resulting from a road crash if the crash occurred on a public road, is unintentional and the death occurred within 30 days from injuries sustained in the crash.

Population rates

Rates per population are based on the deaths to the current 12-month period, and the population at the midpoint of the period. The population at midpoints is interpolated if necessary.

Average trend change (% per year)

Calculated by fitting an exponential curve through the five data points, and quoting the constant (annual) change of this curve.

Other sources for the tables in this bulletin

The underlying database used to produce this bulletin — *the Australian Road Deaths Database* is available for data extraction at <http://www.bitre.gov.au/statistics/safety/fatal_road_crash_database.aspx>.

Road deaths from recent months are preliminary and subject to revision.