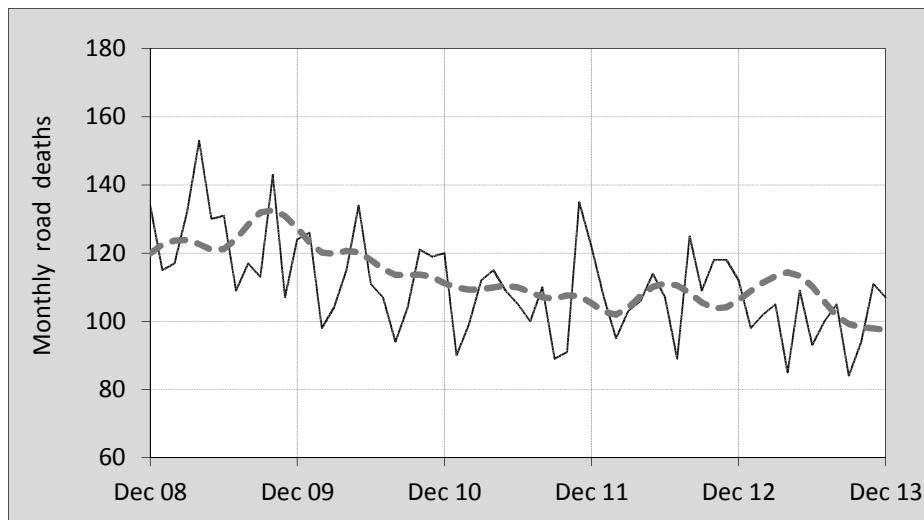




This month's key figures

- There was a total of 107 road deaths during the month of December 2013. In comparison to the average for December over the previous five years, the current figure is 6.2 per cent lower.
- During the 12 months ended December there were 1,193 road deaths. This is a 8.4 per cent reduction compared to the total for the 12-monthly period ended December 2012.
- Presently the rate of annual deaths per 100,000 population stands at 5.2. Compared to the figure for the 12-monthly period ending December 2012, this is a 10.1 per cent reduction.

Monthly Australian road deaths — last five years, with trend



Data Sources

Data are obtained from

- Transport for NSW
- Vicroads
- Department of Transport and Main Roads, Queensland
- Department for Transport, Energy and Infrastructure, S.A.
- Western Australia Police
- Department of Infrastructure, Energy and Resources, Tasmania
- Department of Transport, Northern Territory
- Department of Territory and Municipal Services, ACT
- Australian Bureau of Statistics (3101.0)

Inquiries

For further information about data in this bulletin, contact:

Bureau of Infrastructure, Transport and Regional Economics

Web : www.bitre.gov.au

Email : roadsafety@infrastructure.gov.au

Road deaths from recent months are preliminary and subject to revision.

© Copyright. Commonwealth of Australia

I. Current month and year to date

Deaths by jurisdiction

Current month	NSW	Vic	Qld	SA	WA	Tas	NT	ACT	Australia
December 2012	28	24	22	11	16	5	5	1	112
December 2013	29	30	19	6	13	7	2	1	107
Per cent change	3.6	25.0	-13.6	-45.5	-18.8	40.0	-60.0	-	-4.5

Year to date	NSW	Vic	Qld	SA	WA	Tas	NT	ACT	Australia
January 2012 - December 2012	369	282	280	94	185	32	49	12	1,303
January 2013 - December 2013	339	243	271	98	161	37	37	7	1,193
Per cent change	-8.1	-13.8	-3.2	4.3	-13.0	15.6	-24.5	-41.7	-8.4

2. Yearly deaths — last five 12 monthly periods

Deaths by jurisdiction

12 months ended December	NSW	Vic	Qld	SA	WA	Tas	NT	ACT	Australia
2009	454	290	331	119	191	63	31	12	1,491
2010	405	288	249	118	193	31	50	19	1,353
2011	364	287	269	103	179	24	45	6	1,277
2012	369	282	280	94	185	32	49	12	1,303
2013	339	243	271	98	161	37	37	7	1,193
Latest per cent change	-8.1	-13.8	-3.2	4.3	-13.0	15.6	-24.5	-41.7	-8.4
Average trend change per year (per cent)	-6.5	-3.7	-2.8	-6.0	-3.8	-9.8	3.4	-14.3	-4.7

Deaths by road user

12 months ended December	Driver	Passenger	Pedestrian	Motorcyclist	Cyclist	Total ^a
2009	707	333	196	224	31	1,491
2010	636	284	170	224	38	1,353
2011	568	286	186	202	34	1,277
2012	611	260	172	223	33	1,303
2013	568	201	154	211	50	1,193
Latest per cent change	-7.0	-22.7	-10.5	-5.4	51.5	-8.4
Average trend change per year (per cent)	-4.7	-10.4	-4.6	-1.2	8.5	-4.7

a Includes deaths where road user type is unknown

Deaths by age-group (years)

12 months ended December	<i>0 to 16</i>	<i>17 to 25</i>	<i>26 to 39</i>	<i>40 to 59</i>	<i>60 to 69</i>	<i>≥ 70</i>	<i>Total^b</i>
2009	106	362	355	389	104	175	1,491
2010	74	336	305	356	113	168	1,353
2011	93	280	275	339	102	188	1,277
2012	70	284	300	320	134	194	1,303
2013	66	228	244	315	129	207	1,193
<i>Latest per cent change</i>	-5.7	-19.7	-18.7	-1.6	-3.7	6.7	-8.4
<i>Average trend change per year (per cent)</i>	-9.5	-10.4	-7.4	-5.1	6.2	4.9	-4.7

b Includes deaths to persons with age not recorded.

Deaths by gender

12 months ended December	<i>Males</i>	<i>Females</i>	<i>Total^c</i>
2009	1,081	407	1,491
2010	982	370	1,353
2011	920	355	1,277
2012	934	369	1,303
2013	857	333	1,193
<i>Latest per cent change</i>	-8.2	-9.8	-8.4
<i>Average trend change per year (per cent)</i>	-5.0	-4.0	-4.7

c Includes deaths to persons with gender not recorded.

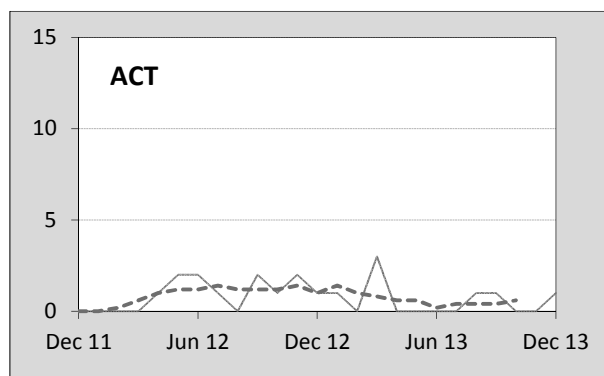
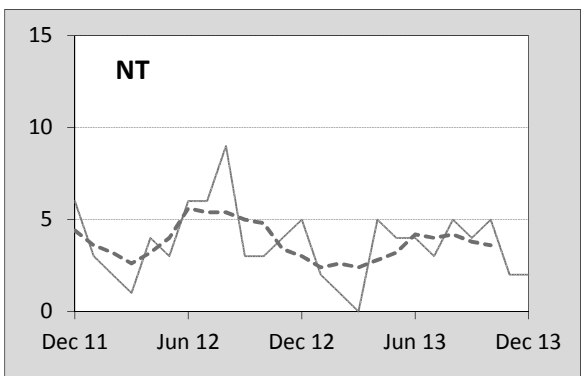
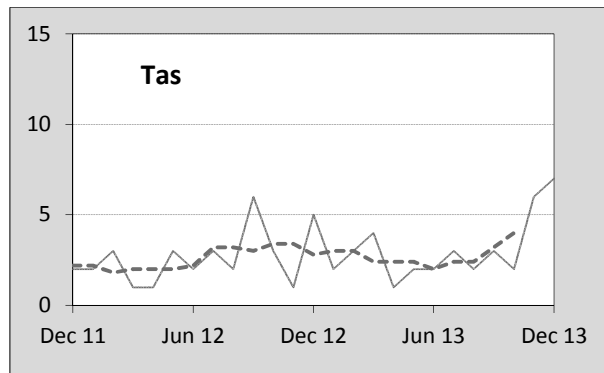
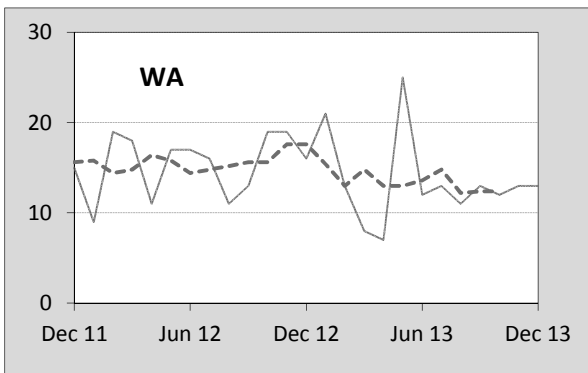
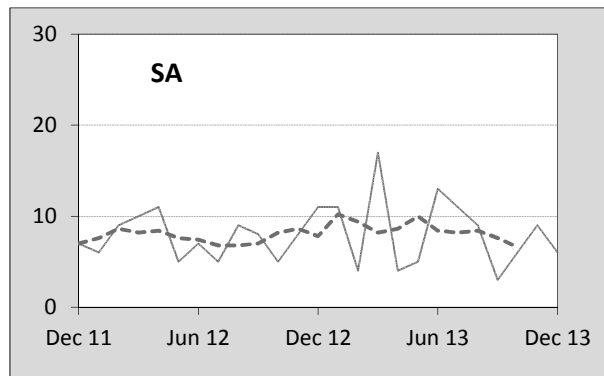
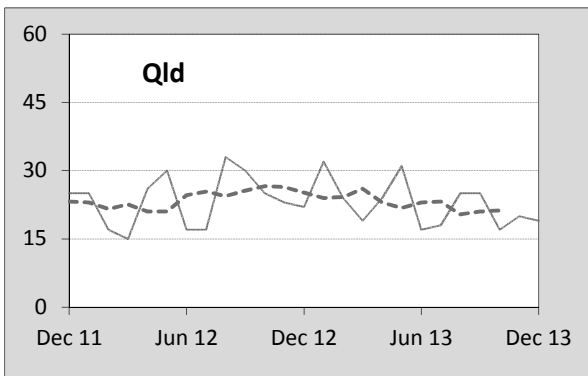
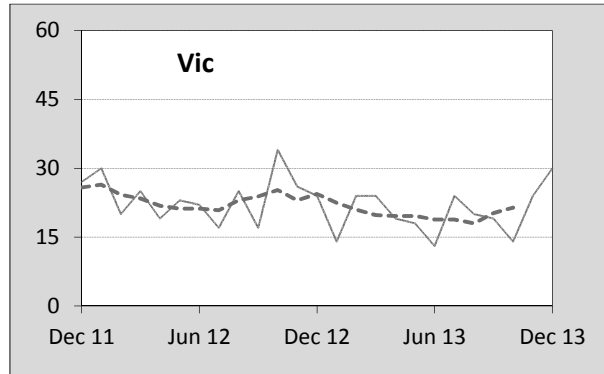
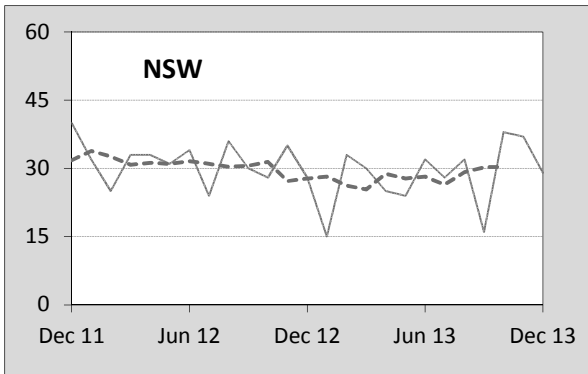
3. Annual deaths per 100,000 population

By jurisdiction

12 months ended December	<i>NSW</i>	<i>Vic</i>	<i>Qld</i>	<i>SA</i>	<i>WA</i>	<i>Tas</i>	<i>NT</i>	<i>ACT</i>	<i>Australia</i>
2009	6.42	5.40	7.65	7.40	8.48	12.49	13.27	3.38	6.86
2010	5.67	5.27	5.65	7.25	8.42	6.09	21.32	5.25	6.14
2011	5.04	5.18	6.01	6.28	7.65	4.69	19.02	1.63	5.72
2012	5.05	5.01	6.13	5.68	7.59	6.25	20.83	3.20	5.73
2013	4.58	4.24	5.82	5.87	6.40	7.21	15.45	1.83	5.16
<i>Latest per cent change</i>	-9.4	-15.4	-5.1	3.3	-15.8	15.4	-25.8	-42.9	-10.1
<i>Average trend change per year (per cent)</i>	-7.6	-5.2	-4.6	-6.8	-6.5	-10.2	2.8	-15.9	-6.2
Calendar year	<i>NSW</i>	<i>Vic</i>	<i>Qld</i>	<i>SA</i>	<i>WA</i>	<i>Tas</i>	<i>NT</i>	<i>ACT</i>	<i>Australia</i>
2009	6.42	5.40	7.65	7.40	8.48	12.49	13.27	3.38	6.86
2010	5.67	5.27	5.65	7.25	8.42	6.09	21.32	5.25	6.14
2011	5.04	5.18	6.01	6.28	7.65	4.69	19.02	1.63	5.72
2012	5.05	5.01	6.13	5.68	7.59	6.25	20.83	3.20	5.73
2013	4.58	4.24	5.82	5.87	6.40	7.21	15.45	1.83	5.16
<i>Latest per cent change</i>	-9.4	-15.4	-5.1	3.3	-15.8	15.4	-25.8	-42.9	-10.1

4. Monthly deaths by jurisdiction — last 24 months

— raw
 - - - smoothed (unweighted 5-point moving average)



5. Fatal crashes: counts and characteristics

12 months ended December	Crash type ^d			Posted speed limit				Total ^e
	Single	Multiple	Pedestrian	0 to 60	70 to 90	100	≥ 110	
2009	649	509	189	413	307	439	180	1,347
2010	544	520	169	359	283	425	163	1,233
2011	504	463	184	346	239	403	151	1,151
2012	521	503	169	403	276	361	140	1,193
2013	526	428	152	344	250	349	125	1,106
<i>Average trend change per year (per cent)</i>	-4.5	-3.7	-4.3	-2.5	-4.3	-6.0	-8.4	-4.2

12 months ended December	Day of week ^f		Time of Day ^g	
	Weekday	Weekend	Day	Night
2009	828	519	777	570
2010	714	519	727	506
2011	674	477	702	449
2012	750	443	755	438
2013	657	449	695	411
<i>Average trend change per year (per cent)</i>	-4.1	-4.4	-1.8	-7.7

d 'Single' and 'Multiple' refer to the number of vehicles involved in a fatal crash where there is no pedestrian killed.

e Includes crashes where speed limit is unknown

f 'Weekday' refers to 6am Monday through to 5:59pm Friday.

g 'Day' refers to 6am through to 5:59 pm.

Appendix

Definition

The road safety agencies in each jurisdiction use detailed criteria to define road crashes and road deaths. Briefly, a death is classified as resulting from a road crash if the crash occurred on a public road, is unintentional and the death occurred within 30 days from injuries sustained in the crash.

Population rates

Rates per population are based on the deaths to the current 12 monthly period, and the population at the midpoint of the period. The population at midpoints are interpolated if necessary.

Average trend change (% per year)

Calculated by fitting an exponential curve through the five data points, and quoting the constant (annual) change of this curve.

Other sources for the tables in this bulletin

The underlying database used to produce this bulletin — the Australian Road Deaths Database is available for online querying and data extraction at

< http://www.bitre.gov.au/statistics/safety/fatal_road_crash_database.aspx >

Road deaths from recent months are preliminary and subject to revision.