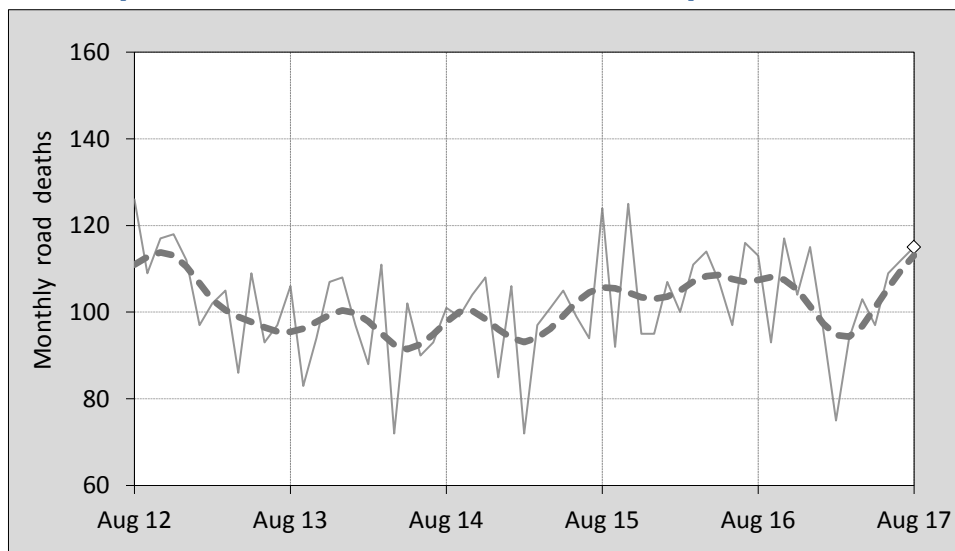




This month's key figures

- There was a total of 115 road deaths during the month of August 2017. In comparison to the average for August over the previous five years, the current figure is 0.9 per cent higher.
- During the 12 months ended August 2017, there were 1,230 road deaths. This is a 3.3 per cent decrease compared to the total for the 12-month period ended August 2016.
- Presently, the rate of annual deaths per 100,000 population stands at 5.0. Compared to the figure for the 12-month period ending August 2016, this is a 4.7 per cent decrease.

Monthly Australian road deaths — last five years, with trend



Data Sources

Data are obtained from

- Transport for NSW
- Vicroads
- Department of Transport and Main Roads, Queensland
- Department of Planning, Transport and Infrastructure, S.A.
- Western Australia Police
- Department of State Growth, Tasmania
- Department of Transport, Northern Territory
- Transport Canberra and City Services Directorate, ACT
- Australian Bureau of Statistics (3101.0)

Inquiries

For further information about data in this bulletin, contact:

Bureau of Infrastructure, Transport and
Regional Economics
Web : www.bitre.gov.au
Email : roadsafety@infrastructure.gov.au

Road deaths from recent months are preliminary and subject to revision.

See www.roadsafety.gov.au for performance indicators used to monitor progress under the National Road Safety Strategy 2011-2020 (NRSS).

© Copyright. Commonwealth of Australia

1. Deaths by jurisdiction

Table 1.1 Current month

Current month	NSW	Vic	Qld	SA	WA	Tas	NT	ACT	Australia
August 2016	36	31	17	6	17	0	6	0	113
August 2017	42	24	18	17	11	2	0	1	115
Per cent change	16.7	-22.6	5.9	183.3	-35.3	-	-100.0	-	1.8

Table 1.2 Year to date

Year to date	NSW	Vic	Qld	SA	WA	Tas	NT	ACT	Australia
January 2016 - August 2016	264	202	163	53	124	24	29	6	865
January 2017 - August 2017	260	166	161	72	97	21	20	4	801
Per cent change	-1.5	-17.8	-1.2	35.8	-21.8	-12.5	-31.0	-33.3	-7.4

Table 1.3 Year ending August

12 months ended August	NSW	Vic	Qld	SA	WA	Tas	NT	ACT	Australia
2013	340	257	290	106	176	32	39	11	1,251
2014	324	255	230	84	165	39	41	8	1,146
2015	329	255	233	110	176	34	45	12	1,194
2016	382	279	247	92	179	36	44	13	1,272
2017	376	255	249	105	166	34	36	9	1,230
Latest per cent change	-1.6	-8.6	0.8	14.1	-7.3	-5.6	-18.2	-30.8	-3.3
Average trend change per year (per cent)	3.7	0.7	-2.3	0.7	-0.4	0.4	-0.9	0.8	0.7

2. Deaths by road user, age-group and gender

Table 2.1 By road user

12 months ended August	Driver	Passenger	Pedestrian	Motorcyclist ^b	Pedal ^b cyclist	Total ^c
2013	606	240	157	200	40	1,251
2014	525	219	156	193	52	1,146
2015	530	251	165	211	32	1,194
2016	632	212	166	225	36	1,272
2017	581	220	163	232	27	1,230
Latest per cent change	-8.1	3.8	-1.8	3.1	-25.0	-3.3
Average trend change per year (per cent)	1.0	-2.0	1.4	4.6	-10.9	0.7

Table 2.2 By age-group^a (years)

12 months ended August	0 to 16	17 to 25	26 to 39	40 to 64	65 to 74	≥ 75	Total ^c
2013	70	265	260	391	112	152	1,251
2014	63	216	235	375	118	137	1,146
2015	74	246	274	348	104	147	1,194
2016	49	240	280	428	115	160	1,272
2017	62	248	265	373	106	176	1,230
Latest per cent change	26.5	3.3	-5.4	-12.9	-7.8	10.0	-3.3
Average trend change per year (per cent)	-4.8	-0.3	2.2	0.4	-1.3	4.6	0.7

2. Deaths by road user, age-group and gender (continued)

Table 2.3 By gender

12 months ended August	<i>Males</i>	<i>Females</i>	<i>Total^d</i>
2013	891	359	1,251
2014	833	312	1,146
2015	848	346	1,194
2016	925	347	1,272
2017	899	328	1,230
<i>Latest per cent change</i>	-2.8	-5.5	-3.3
<i>Average trend change per year (per cent)</i>	1.2	-0.7	0.7

a Age groups were changed in March 2014.

b Includes pillion passengers.

c Includes deaths to persons with either age or road user type not recorded.

d Includes deaths to persons with gender not recorded.

3. Annual deaths per 100,000 population

Table 3.1 Year ended August

12 months ended August	<i>NSW</i>	<i>Vic</i>	<i>Qld</i>	<i>SA</i>	<i>WA</i>	<i>Tas</i>	<i>NT</i>	<i>ACT</i>	<i>Australia</i>
2013	4.61	4.48	6.27	6.36	7.11	6.25	16.22	2.88	5.43
2014	4.33	4.35	4.89	4.99	6.56	7.59	16.86	2.06	4.90
2015	4.33	4.26	4.89	6.48	6.93	6.60	18.49	3.04	5.03
2016	4.96	4.55	5.12	5.38	7.00	6.97	17.99	3.24	5.28
2017	4.81	4.07	5.09	6.11	6.46	6.54	14.73	2.21	5.03
<i>Latest per cent change</i>	-3.0	-10.6	-0.6	13.6	-7.8	-6.1	-18.1	-31.8	-4.7
<i>Average trend change per year (per cent)</i>	2.2	-1.5	-3.7	0.0	-1.3	0.1	-1.3	-0.8	-0.8

Table 3.2 Calendar year period

Calendar year	<i>NSW</i>	<i>Vic</i>	<i>Qld</i>	<i>SA</i>	<i>WA</i>	<i>Tas</i>	<i>NT</i>	<i>ACT</i>	<i>Australia</i>
2012	5.05	4.99	6.13	5.67	7.54	6.06	20.77	3.19	5.72
2013	4.49	4.21	5.82	5.86	6.50	7.02	15.24	1.82	5.13
2014	4.08	4.20	4.72	6.34	7.25	6.42	16.01	2.57	4.89
2015	4.59	4.18	5.08	5.99	6.29	6.60	20.00	3.78	5.05
2016	4.91	4.71	5.18	5.02	7.54	7.15	18.31	2.73	5.34
<i>Latest per cent change</i>	7.0	12.7	1.9	-16.2	19.9	8.4	-8.5	-27.9	5.6

4. Monthly deaths by jurisdiction — last 24 months

— raw
 - - - smoothed
 (13-point moving average)

Figure 4.1 NSW

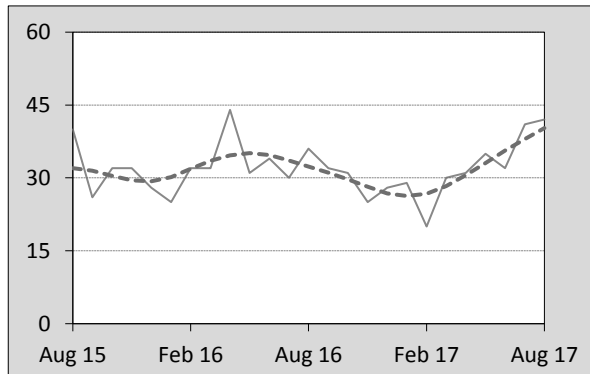


Figure 4.2 Vic

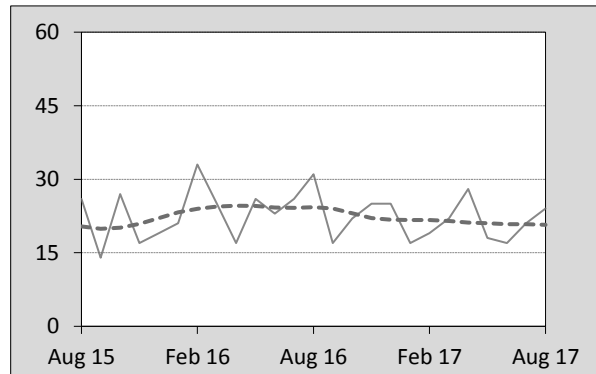


Figure 4.3 Qld

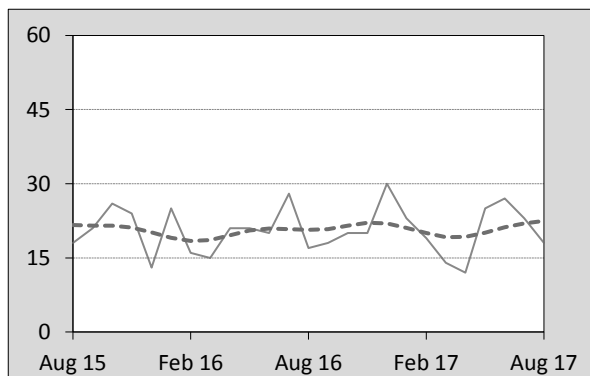


Figure 4.4 SA

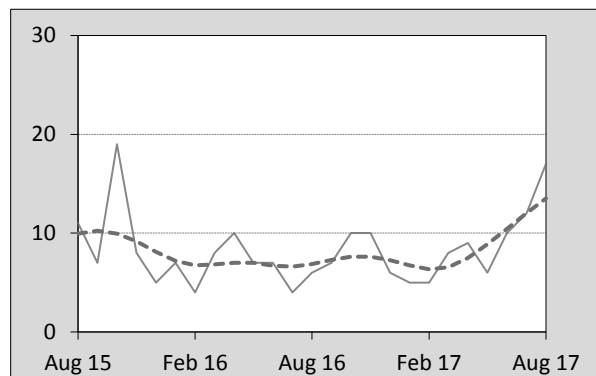


Figure 4.5 WA

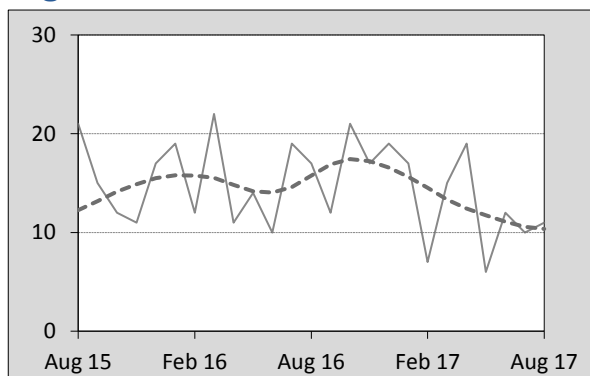


Figure 4.6 Tas

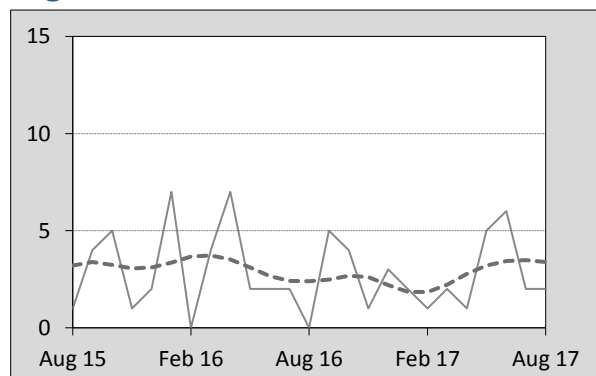


Figure 4.7 NT

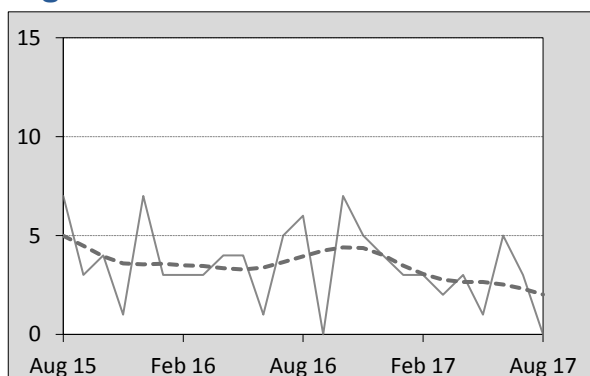
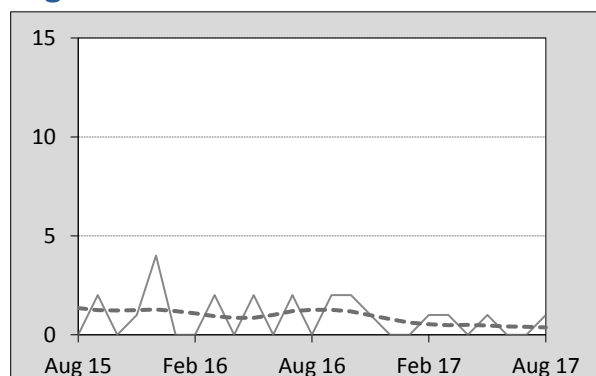


Figure 4.8 ACT



5. Fatal crashes: counts and characteristics

Table 5.1 By Crash type and Posted speed limit

12 months ended August	Crash type ^a			Posted speed limit						Total ^b
	Single	Multiple	Pedestrian	40	50	60	70 to 90	100	≥ 110	
2013	538	448	156	18	130	213	261	363	141	1,142
2014	466	435	154	12	117	185	243	354	128	1,055
2015	480	443	163	16	124	208	229	355	142	1,086
2016	536	484	157	12	123	216	278	378	159	1,177
2017	503	486	151	21	128	202	252	331	147	1,140
Latest per cent change	-6.2	0.4	-3.8	75.0	4.1	-6.5	-9.4	-12.4	-7.5	-3.1
Average trend change per year (per cent)	0.1	2.7	-0.5	3.1	0.2	0.5	0.6	-1.2	3.0	1.1

Table 5.2 By Day of week and Time of day

12 months ended August	Day of week ^c		Time of Day ^d	
	Weekday	Weekend	Day	Night
2013	701	441	711	431
2014	636	419	672	383
2015	667	419	667	419
2016	724	453	715	462
2017	717	423	729	411
Latest per cent change	-1.0	-6.6	2.0	-11.0
Average trend change per year (per cent)	1.8	-0.1	1.1	0.9

a 'Single' and 'Multiple' refer to the number of vehicles involved in a fatal crash where there is no pedestrian killed.

b Includes crashes where speed limit is unknown or where the posted speed limit is 30km/hr or less.

c 'Weekday' refers to 6am Monday through to 5:59pm Friday.

d 'Day' refers to 6am through to 5:59 pm.

Appendix

Definition

The road safety agencies in each jurisdiction use detailed criteria to define road crashes and road deaths. Briefly, a death is classified as resulting from a road crash if the crash occurred on a public road, is unintentional and the death occurred within 30 days from injuries sustained in the crash.

Population rates

Rates per population are based on the deaths to the current 12-month period, and the population at the midpoint of the period. The population at midpoints is interpolated if necessary.

Average trend change (% per year)

Calculated by fitting an exponential curve through the five data points, and quoting the constant (annual) change of this curve.

Other sources for the tables in this bulletin

The underlying database used to produce this bulletin — *the Australian Road Deaths Database* is available for data extraction at <http://www.bitre.gov.au/statistics/safety/fatal_road_crash_database.aspx>.

Road deaths from recent months are preliminary and subject to revision.