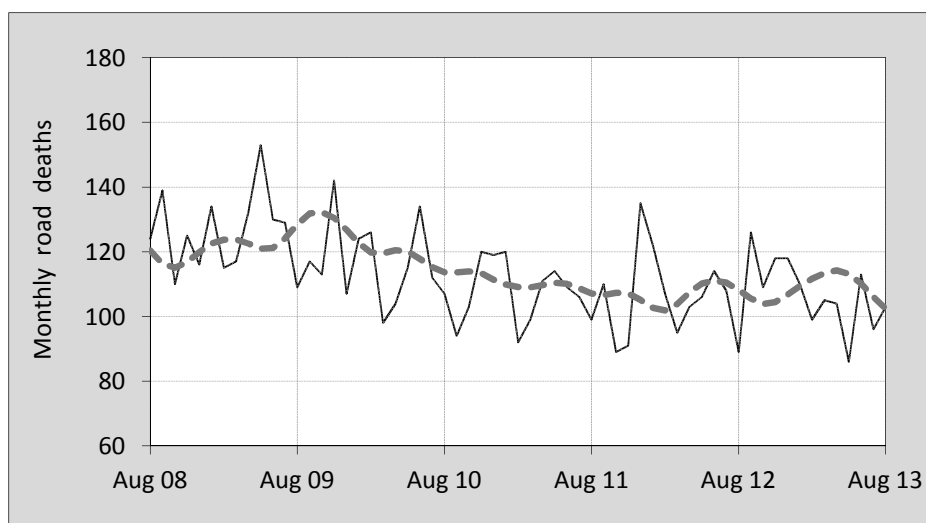




This month's key figures

- There was a total of 104 road deaths in August 2013. In comparison to the average for August over the previous five years, the current figure is 11.3 per cent lower.
- During the 12 months ended August there were 1,265 road deaths. This is a 1.6 per cent decrease over the total for the 12-monthly period ending August 2012.
- Presently the rate of annual deaths per 100,000 population stands at 5.5. Compared to the figure for the 12-monthly period ending August 2012, this is a 3.0 per cent reduction.

Monthly Australian road deaths — last five years, with trend



Data Sources

Data are obtained from

- Transport for NSW
- Vicroads
- Department of Transport and Main Roads, Queensland
- Department for Transport, Energy and Infrastructure, S.A.
- Western Australia Police
- Department of Infrastructure, Energy and Resources, Tasmania
- Department of Lands and Planning, Northern Territory
- Department of Territory and Municipal Services, ACT
- Australian Bureau of Statistics (3101.0)

Inquiries

For further information about data in this bulletin, contact:

Bureau of Infrastructure, Transport and Regional Economics

Web : www.bitre.gov.au

Email : roadsafety@infrastructure.gov.au

Road deaths from recent months are preliminary and subject to revision.

© Copyright. Commonwealth of Australia

I. Current month and year to date

Deaths by jurisdiction

Current month	NSW	Vic	Qld	SA	WA	Tas	NT	ACT	Australia
August 2012	36	25	33	9	12	2	9	0	126
August 2013	35	19	24	8	9	3	5	1	104
Per cent change	-2.8	-24.0	-27.3	-11.1	-25.0	50.0	-44.4	-	-17.5

Year to date	NSW	Vic	Qld	SA	WA	Tas	NT	ACT	Australia
January 2012 - August 2012	248	181	180	62	120	17	34	6	848
January 2013 - August 2013	232	156	190	75	109	20	24	4	810
Per cent change	-6.5	-13.8	5.6	21.0	-9.2	17.6	-29.4	-33.3	-4.5

2. Yearly deaths — last five 12 monthly periods

Deaths by jurisdiction

12 months ended August	NSW	Vic	Qld	SA	WA	Tas	NT	ACT	Australia
2009	439	287	340	123	184	61	43	10	1,487
2010	419	292	252	118	194	33	47	21	1,376
2011	372	289	267	112	190	27	37	8	1,302
2012	379	272	274	88	187	23	56	6	1,285
2013	353	257	290	107	174	36	38	10	1,265
Latest per cent change	-6.9	-5.5	5.8	21.6	-7.0	56.5	-32.1	66.7	-1.6
Average trend change per year (per cent)	-5.2	-2.9	-2.3	-5.6	-1.5	-13.2	-0.7	-11.8	-3.8

Deaths by road user

12 months ended August	Driver	Passenger	Pedestrian	Motorcyclist	Cyclist	Total ^a
2009	667	331	203	250	35	1,487
2010	665	288	172	212	37	1,376
2011	598	278	181	208	36	1,302
2012	585	263	179	227	30	1,285
2013	622	241	152	200	42	1,265
Latest per cent change	6.3	-8.4	-15.1	-11.9	40.0	-1.6
Average trend change per year (per cent)	-2.6	-7.0	-5.2	-3.7	1.6	-3.8

a Includes deaths where road user type is unknown

Deaths by age-group (years)

12 months ended August	<i>0 to 16</i>	<i>17 to 25</i>	<i>26 to 39</i>	<i>40 to 59</i>	<i>60 to 69</i>	<i>≥ 70</i>	<i>Total^b</i>
2009	99	387	365	359	104	173	1,487
2010	84	309	323	371	113	175	1,376
2011	80	315	272	351	110	174	1,302
2012	84	271	314	304	117	195	1,285
2013	68	264	260	326	143	197	1,265
<i>Latest per cent change</i>	-19.0	-2.6	-17.2	7.2	22.2	1.0	-1.6
<i>Average trend change per year (per cent)</i>	-7.2	-8.6	-6.8	-3.8	6.9	3.7	-3.8

b Includes deaths to persons with age not recorded.

Deaths by gender

12 months ended August	<i>Males</i>	<i>Females</i>	<i>Total^c</i>
2009	1,088	397	1,487
2010	992	381	1,376
2011	934	366	1,302
2012	925	360	1,285
2013	912	352	1,265
<i>Latest per cent change</i>	-1.4	-2.2	-1.6
<i>Average trend change</i>	-4.1	-2.9	-3.8

c Includes deaths to persons with gender not recorded.

3. Annual deaths per 100,000 population

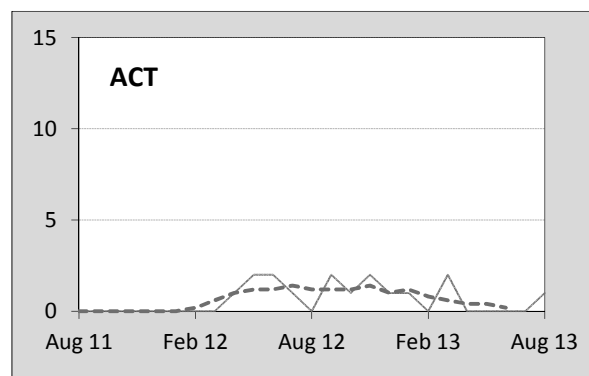
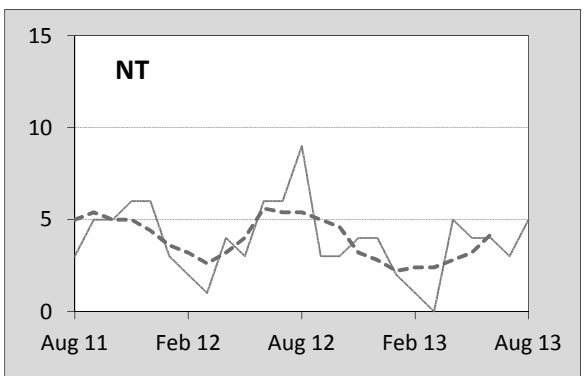
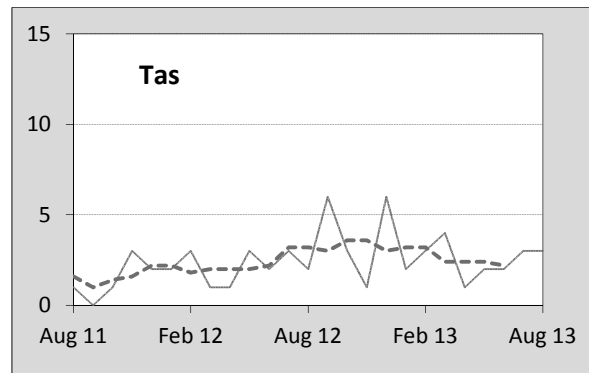
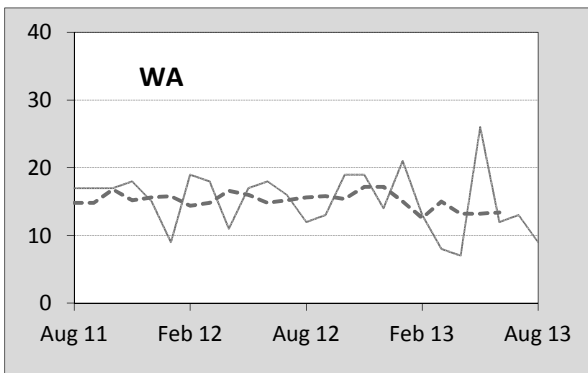
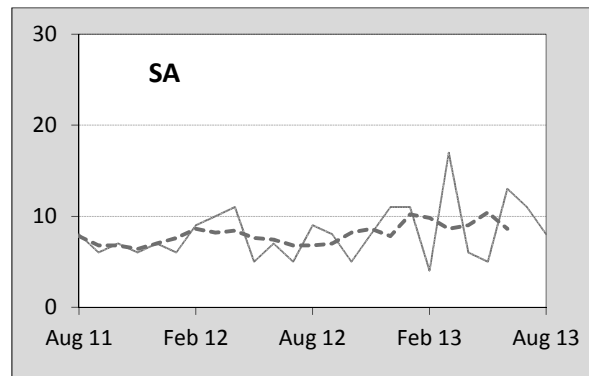
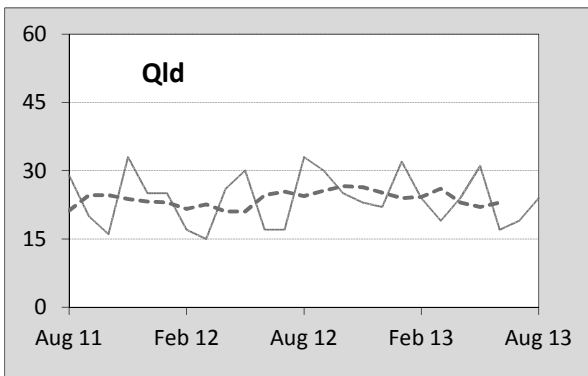
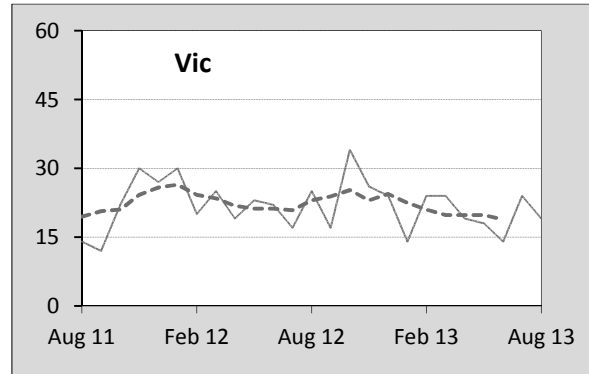
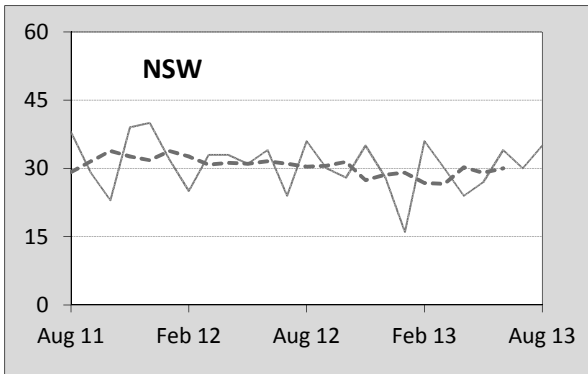
By jurisdiction

12 months ended August	<i>NSW</i>	<i>Vic</i>	<i>Qld</i>	<i>SA</i>	<i>WA</i>	<i>Tas</i>	<i>NT</i>	<i>ACT</i>	<i>Australia</i>
2009	6.25	5.38	7.92	7.68	8.28	12.13	19.24	2.84	6.90
2010	5.89	5.37	5.75	7.27	8.53	6.50	20.58	5.84	6.27
2011	5.17	5.24	6.00	6.85	8.15	5.28	16.07	2.19	5.86
2012	5.21	4.86	6.04	5.33	7.77	4.49	24.00	1.61	5.69
2013	4.80	4.53	6.22	6.41	7.12	7.01	16.02	2.67	5.52
<i>Latest per cent change</i>	-7.8	-6.8	3.0	20.3	-8.4	56.2	-33.2	65.8	-3.0
<i>Average trend change per year (per cent)</i>	-6.3	-4.4	-4.2	-6.5	-3.9	-13.6	-2.1	-13.1	-5.3

Calendar year	<i>NSW</i>	<i>Vic</i>	<i>Qld</i>	<i>SA</i>	<i>WA</i>	<i>Tas</i>	<i>NT</i>	<i>ACT</i>	<i>Australia</i>
2008	5.39	5.76	7.77	6.23	9.44	7.82	34.11	4.02	6.76
2009	6.42	5.40	7.65	7.40	8.48	12.49	13.27	3.38	6.86
2010	5.67	5.27	5.65	7.25	8.42	6.09	21.32	5.25	6.14
2011	5.04	5.18	6.01	6.28	7.65	4.69	19.02	1.63	5.72
2012	5.05	5.01	6.13	5.68	7.60	6.44	20.41	3.20	5.74
<i>Latest per cent change</i>	0.2	-3.3	2.1	-9.7	-0.6	37.3	7.3	96.3	0.4

4. Monthly deaths by jurisdiction — last 24 months

— raw
 - - - smoothed (unweighted 5-point moving average)



5. Fatal crashes: counts and characteristics

12 months ended August	Crash type ^d			Posted speed limit				Total ^e
	Single	Multiple	Pedestrian	0 to 60	70 to 90	100	≥ 110	
2009	640	501	200	433	326	405	154	1,341
2010	572	521	168	353	265	436	178	1,261
2011	522	489	178	331	272	417	150	1,189
2012	507	488	176	409	249	361	138	1,171
2013	552	451	151	363	265	354	138	1,154
Average trend change per year (per cent)	-4.1	-2.7	-5.0	-2.0	-4.7	-4.5	-4.6	-3.7

12 months ended August	Day of week ^f		Time of Day ^g	
	Weekday	Weekend	Day	Night
2009	831	510	765	576
2010	738	523	736	525
2011	713	476	715	474
2012	710	461	741	430
2013	718	436	721	433
Average trend change per year (per cent)	-3.3	-4.3	-1.1	-7.4

d 'Single' and 'Multiple' refer to the number of vehicles involved in a fatal crash where there is no pedestrian killed.

e Includes crashes where speed limit is unknown

f 'Weekday' refers to 6am Monday through to 5:59pm Friday.

g 'Day' refers to 6am through to 5:59 pm.

Appendix

Definition

The road safety agencies in each jurisdiction use detailed criteria to define road crashes and road deaths. Briefly, a death is classified as resulting from a road crash if the crash occurred on a public road, is unintentional and the death occurred within 30 days from injuries sustained in the crash.

Population rates

Rates per population are based on the deaths to the current 12 monthly period, and the population at the midpoint of the period. The population at midpoints are interpolated if necessary.

Average trend change (% per year)

Calculated by fitting an exponential curve through the five data points, and quoting the constant (annual) change of this curve.

Other sources for the tables in this bulletin

The underlying database used to produce this bulletin — the Australian Road Deaths Database is available for online querying and data extraction at

< http://www.bitre.gov.au/statistics/safety/fatal_road_crash_database.aspx >

Road deaths from recent months are preliminary and subject to revision.