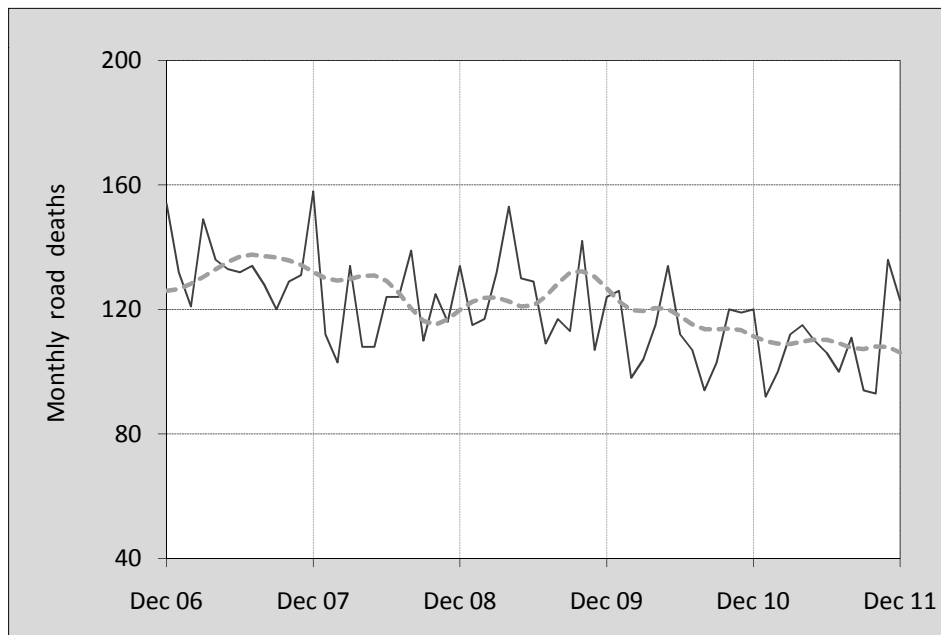




This month's key figures

- There was a total of 123 road deaths in December 2011. Compared to the average for the month of December over the last five years, this is a 10.9 per cent decrease.
- During the 12 months ended December 2011 there were 1,292 deaths. This is a 4.4 per cent decrease from the 12-monthly period ending December 2010.
- The rate of annual deaths per 100 000 population presently stands at 5.7. This is a 5.8 per cent decrease from the 12-monthly period ending December 2010.

Monthly Australian road deaths — last five years, with trend



Data Sources

Data are obtained from

- Roads and Traffic Authority, NSW
- Vicroads
- Department of Transport and Main Roads, Queensland
- Department for Transport, Energy and Infrastructure, S.A.
- Western Australia Police
- Department of Infrastructure, Energy and Resources, Tasmania
- Department of Lands and Planning, Northern Territory
- Department of Territory and Municipal Services, ACT
- Australian Bureau of Statistics (3101.0)

Inquiries

For further information about data in this bulletin, contact:

Bureau of Infrastructure, Transport and
Regional Economics
Web : < www.bitre.gov.au >
Email : roadsafety@infrastructure.gov.au

Road deaths from recent months are preliminary and subject to revision.

© Copyright Commonwealth of Australia

I. Current month and year to date

Deaths by jurisdiction

Current month	NSW	Vic	Qld	SA	WA	Tas	NT	ACT	Australia
Dec 2010	25	28	25	8	24	4	5	1	120
Dec 2011	40	28	25	7	15	2	6	0	123
Per cent change	60.0	0.0	0.0	-12.5	-37.5	-50.0	20.0	-100.0	2.5

Year to date	NSW	Vic	Qld	SA	WA	Tas	NT	ACT	Australia
Jan 2010 to Dec 2010	405	288	249	118	193	31	49	19	1,352
Jan 2011 to Dec 2011	376	288	269	103	180	26	44	6	1,292
Per cent change	-7.2	0.0	8.0	-12.7	-6.7	-16.1	-10.2	-68.4	-4.4

2. Yearly deaths — last five 12 monthly periods

Deaths by jurisdiction

12 months ended Dec	NSW	Vic	Qld	SA	WA	Tas	NT	ACT	Australia
2007	435	332	360	124	235	45	58	14	1,603
2008	374	303	328	99	205	39	75	14	1,437
2009	453	290	331	119	190	63	30	12	1,488
2010	405	288	249	118	193	31	49	19	1,352
2011	376	288	269	103	180	26	44	6	1,292
Latest per cent change	-7.2	0.0	8.0	-12.7	-6.7	-16.1	-10.2	-68.4	-4.4
Average change per year (per cent)	-2.1	-3.3	-8.2	-1.9	-5.8	-12.4	-9.3	-13.0	-4.8

Deaths by road user

12 months ended Dec	Driver	Passenger	Pedestrian	Motorcyclist	Cyclist	Total ^a
2007	785	336	204	237	41	1,603
2008	671	302	189	245	28	1,437
2009	708	330	194	224	31	1,488
2010	635	284	170	224	38	1,352
2011	581	286	189	200	35	1,292
Latest per cent change	-8.5	0.7	11.2	-10.7	-7.9	-4.4
Average change per year (per cent)	-6.4	-3.8	-2.6	-4.2	-0.1	-4.8

^a Includes deaths of unknown road user type

Deaths by age-group (years)

12 months ended Dec	0 to 16	17 to 25	26 to 39	40 to 59	60 to 69	≥ 70	Total ^a
2007	101	392	412	391	106	200	1,603
2008	88	376	345	352	96	180	1,437
2009	105	360	356	388	104	175	1,488
2010	74	336	305	356	113	167	1,352
2011	98	279	277	340	105	189	1,292
Latest per cent change	32.4	-17.0	-9.2	-4.5	-7.1	13.2	-4.4
Average change per year (per cent)	-2.3	-7.6	-8.8	-2.6	1.5	-1.9	-4.8

a Includes deaths to persons with age not recorded.

Deaths by gender

12 months ended Dec	Males	Females	Total ^b
2007	1,172	431	1,603
2008	1,057	379	1,437
2009	1,075	409	1,488
2010	980	371	1,352
2011	933	356	1,292
Latest per cent change	-4.8	-4.0	-4.4
Average change per year (per cent)	-5.2	-4.0	-4.8

b Includes deaths to persons with gender not recorded.

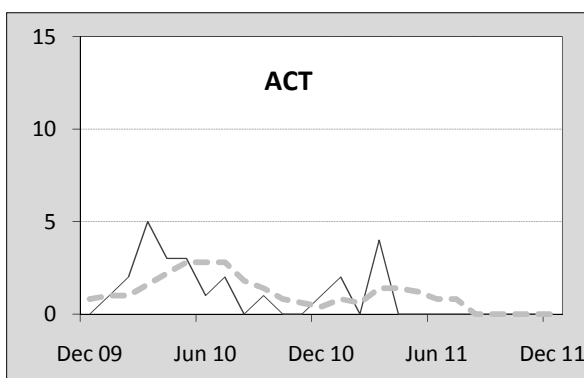
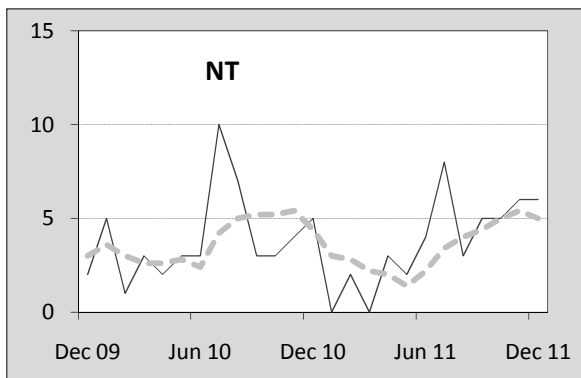
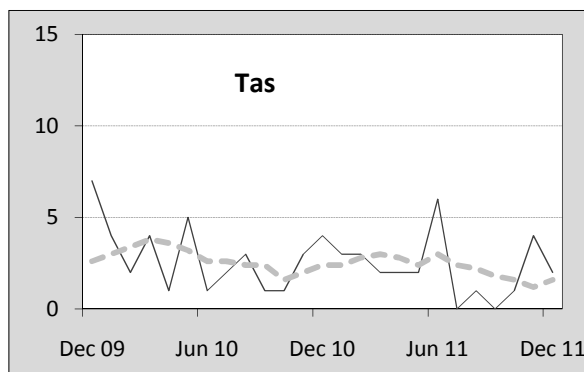
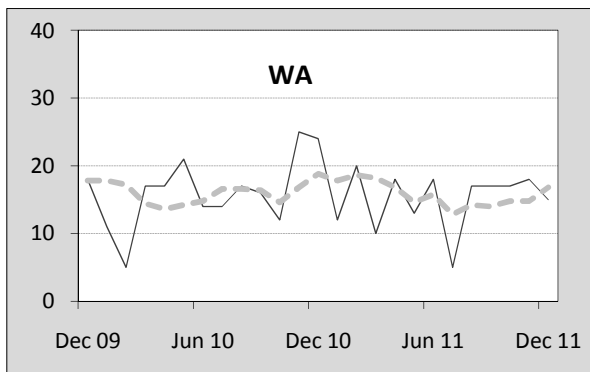
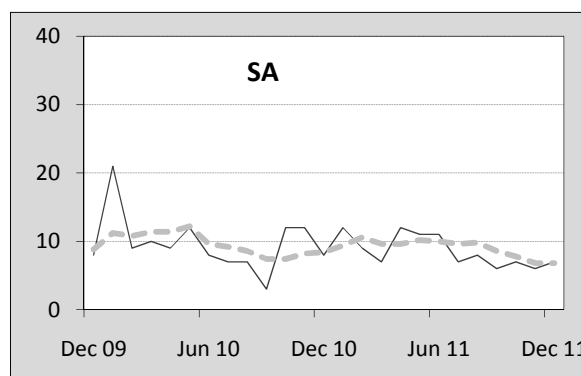
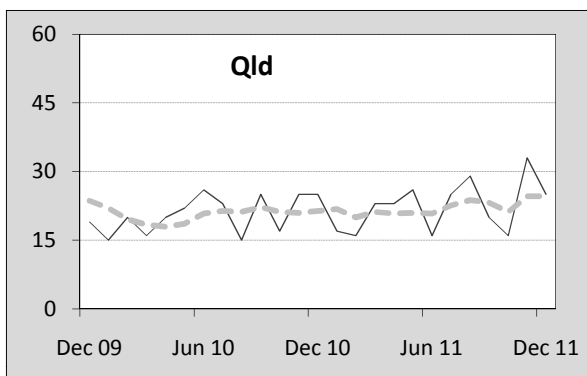
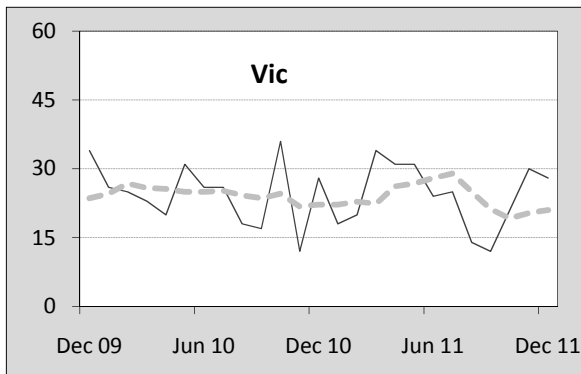
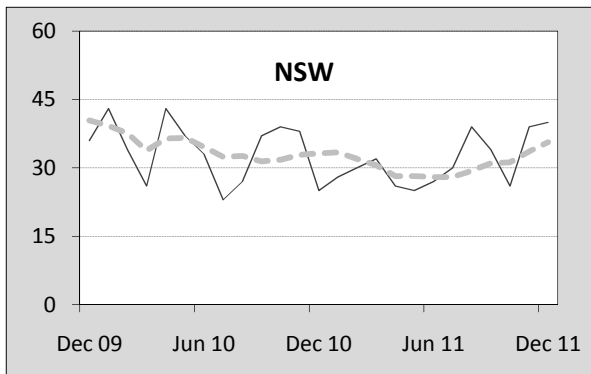
3. Annual deaths per 100 000 population

By jurisdiction

12 months ended Dec	NSW	Vic	Qld	SA	WA	Tas	NT	ACT	Australia
2007	6.30	6.36	8.58	7.82	11.12	9.12	27.00	4.10	7.61
2008	5.33	5.69	7.61	6.17	9.42	7.83	34.01	4.04	6.68
2009	6.36	5.32	7.48	7.33	8.47	12.52	13.70	3.41	6.78
2010	5.61	5.20	5.53	7.18	8.43	6.11	21.37	5.30	6.06
2011	5.15	5.12	5.87	6.22	7.67	5.09	19.12	1.64	5.71
Latest per cent change	-8.2	-1.5	6.3	-13.4	-9.0	-16.7	-10.6	-69.0	-5.8

Monthly deaths by jurisdiction — last 24 months

— raw
 - - - smoothed (unweighted 5-point moving average)



5. Characteristics of fatal crashes

12 months ended Dec	Crash type ^a			Posted speed limit				Total ^b
	Single	Multiple	Pedestrian	0 to 60	70 to 90	100	≥ 110	
2007	683	567	203	436	313	484	184	1,453
2008	631	496	188	413	313	413	145	1,315
2009	650	508	187	406	298	438	177	1,345
2010	546	518	169	347	279	425	161	1,233
2011	515	464	187	339	231	390	150	1,166
<i>Average change per year (per cent)</i>	-6.8	-3.5	-2.7	-6.5	-7.0	-4.0	-3.0	-4.9

12 months ended Dec	Day of week ^c		Time of Day ^d	
	Weekday	Weekend	Day	Night
2007	883	570	831	621
2008	761	554	720	593
2009	828	517	776	569
2010	715	518	729	504
2011	685	481	713	453
<i>Average change per year (per cent)</i>	-5.5	-4.0	-2.9	-7.6

- a 'Single' and 'Multiple' refer to the the number of vehicles involved in a fatal crash where there is no pedestrian killed.
 b Includes crashes where speed limit is unknown
 c 'Weekday' refers to 6am Monday through to 5:59pm Friday.
 d 'Day' refers to 6am through to 5:59 pm.

Appendix

Definition

The road safety agencies in each jurisdiction use detailed criteria to define road crashes and road deaths. Briefly, a death is classified as resulting from a road crash if the crash occurred on a public road, is unintentional and the death occurred within 30 days from injuries sustained in the crash.

Population rates

Rates per population are based on the deaths to the current 12 monthly period, and the population at the midpoint of the period. The population at midpoints are interpolated if necessary.

Average (%) change per year

Calculated by fitting an exponential curve through the five data points, and quoting the constant (annual) change of this curve.

Other sources for the tables in this bulletin

The underlying database used to produce this bulletin — *the Australian Road Deaths Database* is available for online querying and data extraction at <http://www.bitre.gov.au/info.aspx?NodeId=167> >
 Road deaths from recent months are preliminary and subject to revision.