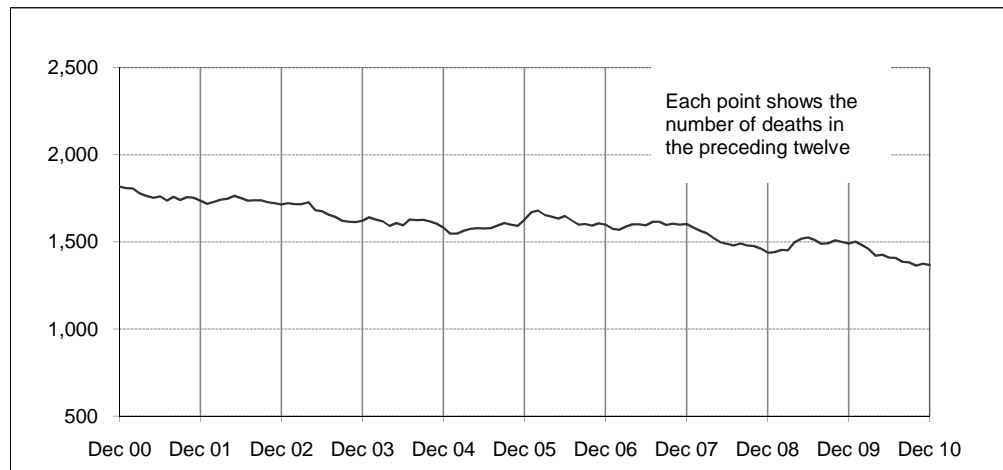




Australian road deaths for 12 months to date — last 10 years



Inquiries

For further information about data in this bulletin, contact:

Infrastructure, Surface Transport & Road Safety Statistics
Bureau of Infrastructure, Transport and Regional Economics
Department of Infrastructure and Transport,
GPO Box 594,
Canberra, ACT 2601
Email: roadsafety@infrastructure.gov.au
Internet: www.infrastructure.gov.au

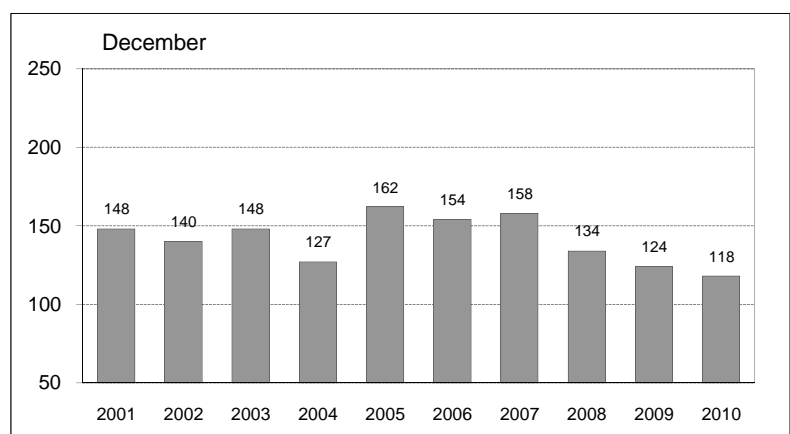
Data Sources

The data presented here are obtained from the following sources:

- Roads and Traffic Authority, NSW
- Vicroads
- Queensland Transport
- Department for Transport, Energy and Infrastructure, South Australia
- Western Australia Police
- Department of Infrastructure, Energy and Resources, Tasmania
- Department of Lands and Planning, Northern Territory
- Territory and Municipal Services, ACT

- Road deaths from recent months are preliminary and subject to revision.

Australian road deaths for December — last 10 years



This month's key figures

There was a total of 118 road deaths in December 2010.

- this is a 4.8 per cent decrease from the December 2009 figure.

There have been 1,368 road deaths in 2010 to the end of December.

- this is a 8.2 per cent decrease from the same 12 month period in 2009.

NUMBER OF ROAD CRASH DEATHS IN EACH STATE / TERRITORY

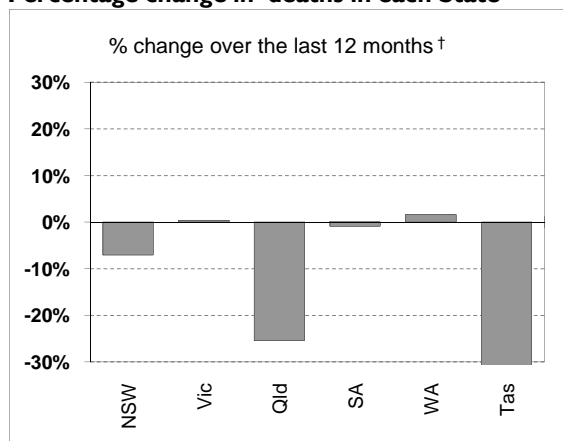
Road deaths by State/Territory

for current month, year to date, 12 months ended December, and five year trend

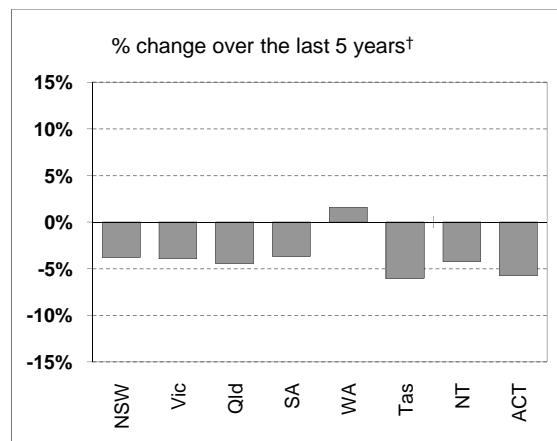
	NSW	Vic	Qld	SA	WA	Tas	NT	ACT	Australia
Current month									
Dec 2010	26	27	24	8	24	4	5	0	118
Dec 2009	36	34	19	8	18	7	2	0	124
% change	-27.8	-20.6	26.3	0.0	33.3	-42.9	150.0	-	-4.8
Year to date									
Jan 2010 - Dec 2010	421	291	247	118	193	31	49	18	1,368
Jan 2009 - Dec 2009	453	290	331	119	190	64	31	12	1,490
% change	-7.1	0.3	-25.4	-0.8	1.6	-51.6	58.1	50.0	-8.2
12-months to date									
Jan 2010 - Dec 2010	421	291	247	118	193	31	49	18	1,368
Jan 2009 - Dec 2009	453	290	331	119	190	64	31	12	1,490
Difference	-32	1	-84	-1	3	-33	18	6	-122
% change	-7.1	0.3	-25.4	-0.8	1.6	-51.6	58.1	50.0	-8.2
Average annual % change over 5 years^a									
YE December 2005 to YE December 2010	-3.8	-3.9	-4.4	-3.7	1.6	-6.0	-4.2	-5.8	-3.3

^a Average annual percentage change based on the exponential trend for the last five 12-month periods

Percentage change in deaths in each State



[†] Percentage change between the two 12-month periods ending December 2010 and December 2009.
NT and ACT not shown.



[‡] Average annual percentage change based on the exponential trend from the year ending December 2005 to year ending December 2010.

NUMBER OF DEATHS IN EACH ROAD USER GROUP

Road deaths by road user group and gender
for 12 months ended December 2010, December 2009 and five year trend

	Drivers	Passengers	Pedestrians	Motor-cyclists ^a	Cyclists	All road users ^b
Males						
Jan 2010 - Dec 2010	476	153	118	206	36	993
Jan 2009 - Dec 2009	523	179	137	212	26	1,077
% change	-9.0	-14.5	-13.9	-2.8	38.5	-7.8
Females						
Jan 2010 - Dec 2010	168	128	55	18	4	374
Jan 2009 - Dec 2009	186	147	58	12	5	409
% change	-9.7	-12.9	-5.2	50.0	-20.0	-8.6
Persons^c						
Jan 2010 - Dec 2010	644	282	173	224	40	1,368
Jan 2009 - Dec 2009	709	330	195	224	31	1,490
% change	-9.2	-14.5	-11.3	0.0	29.0	-8.2
Average annual % change over 5 years^d						
YE December 2005 to YE December 2010	-3.6	-3.4	-5.3	-1.0	-3.4	-3.3

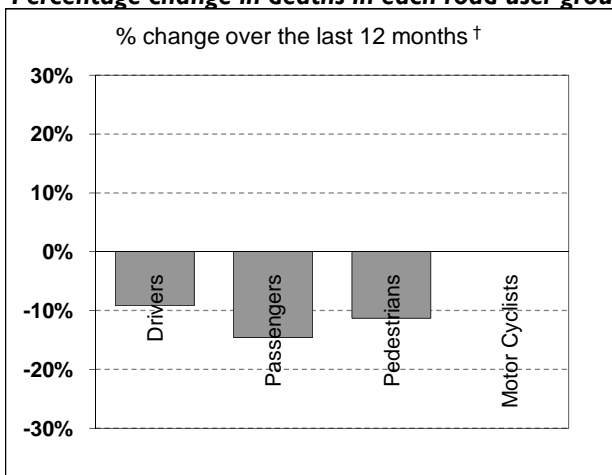
a Includes pillion passengers

b Includes road users not separately specified

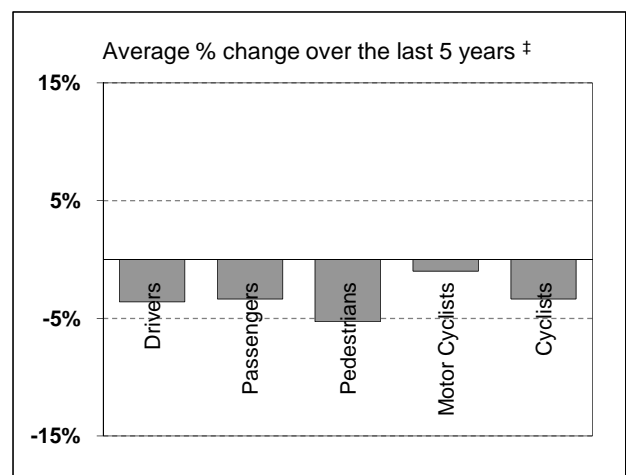
c Includes road users with unstated gender

d Average annual percentage change based on the exponential trend for the last five 12-month periods

Percentage change in deaths in each road user group



† Percentage change between the two 12-month periods ending December 2010 and December 2009. Cyclists not shown.

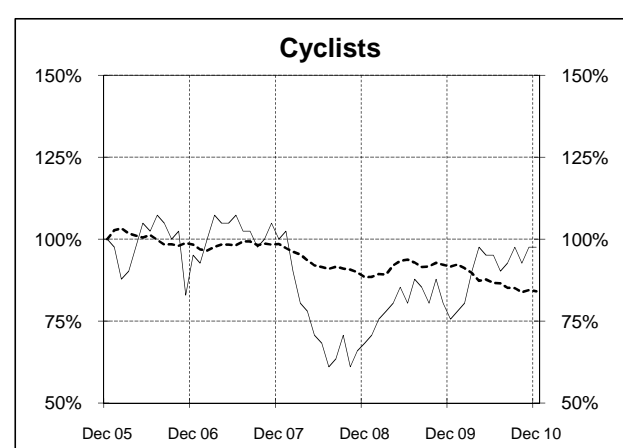
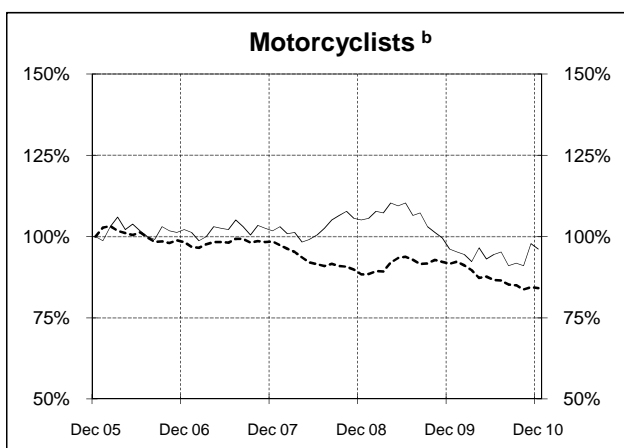
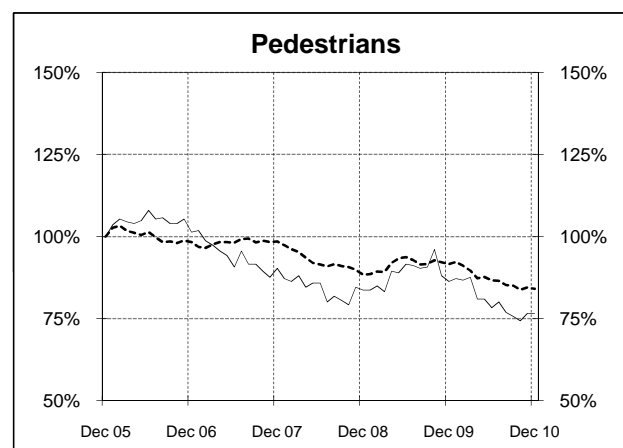
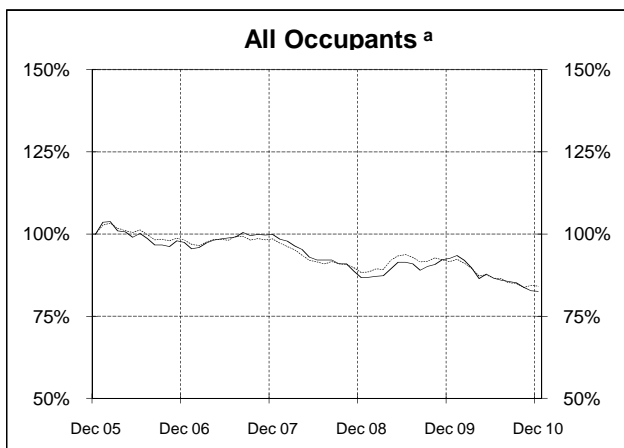
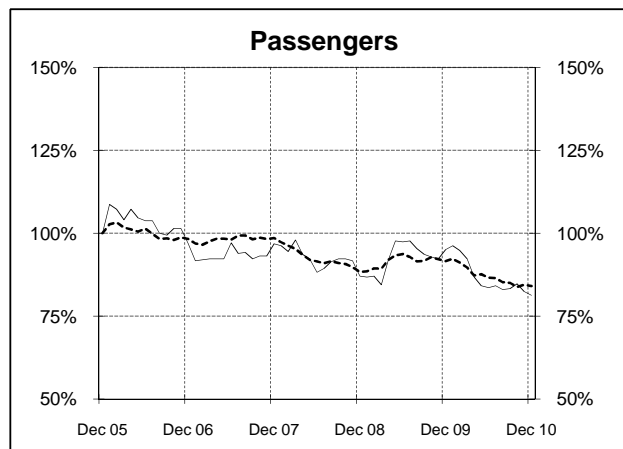
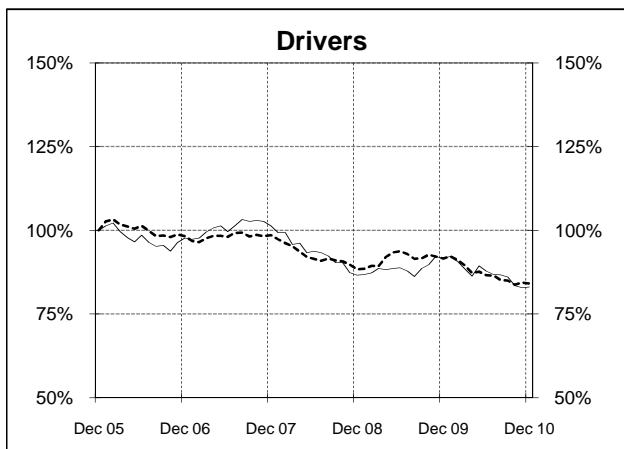
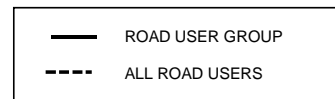


‡ Average annual percentage change based on the exponential trend from the year ending December 2005 to year ending December 2010.

DEATHS IN EACH ROAD USER GROUP - TRENDS

Annual deaths in each road user group - last 5 years

The number shown at each month represents the number of deaths in the preceding 12 months expressed as a percentage of the number of deaths in the 12 months to December 2005.



a Comprises drivers and passengers

b Includes pillion passengers

NUMBER OF FATAL ROAD CRASHES IN EACH STATE / TERRITORY

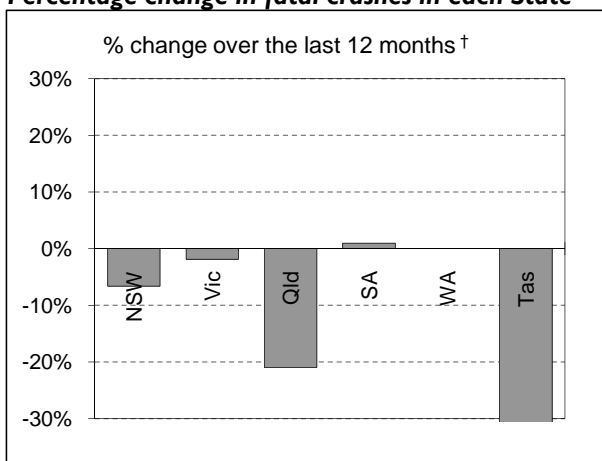
Fatal crashes by State/Territory

for current month, year to date, 12 months ended December, and five year trend.

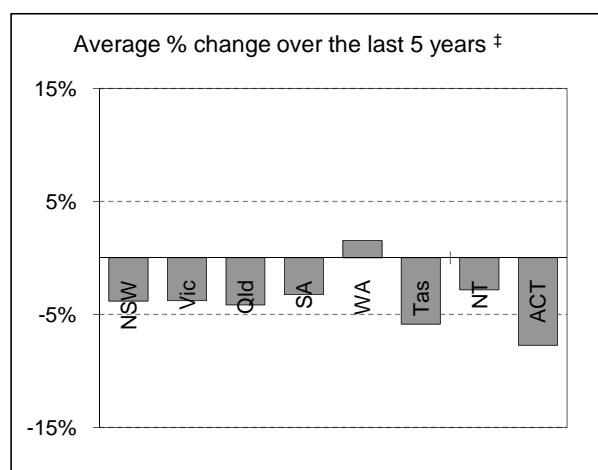
	NSW	Vic	Qld	SA	WA	Tas	NT	ACT	Australia
Current month									
Dec 2010	24	25	23	7	19	3	4	0	105
Dec 2009	28	34	18	8	17	6	2	0	113
% change	-14.3	-26.5	27.8	-12.5	11.8	-50.0	100.0	-	-7.1
Year to date									
Jan 2010 - Dec 2010	381	263	234	105	176	29	46	15	1,249
Jan 2009 - Dec 2009	408	268	296	104	176	52	31	11	1,346
% change	-6.6	-1.9	-20.9	1.0	0.0	-44.2	48.4	36.4	-7.2
12 months to date									
Jan 2010 - Dec 2010	381	263	234	105	176	29	46	15	1,249
Jan 2009 - Dec 2009	408	268	296	104	176	52	31	11	1,346
% change	-6.6	-1.9	-20.9	1.0	0.0	-44.2	48.4	36.4	-7.2
Average annual % change over 5 years^a									
YE December 2005 to YE December 2010	-3.8	-3.8	-4.1	-3.3	1.5	-5.8	-2.8	-7.7	-3.2

^a Average annual percentage change based on the exponential trend for the last five 12-month periods

Percentage change in fatal crashes in each State



† Percentage change between the two 12-month periods ending December 2010 and December 2009.



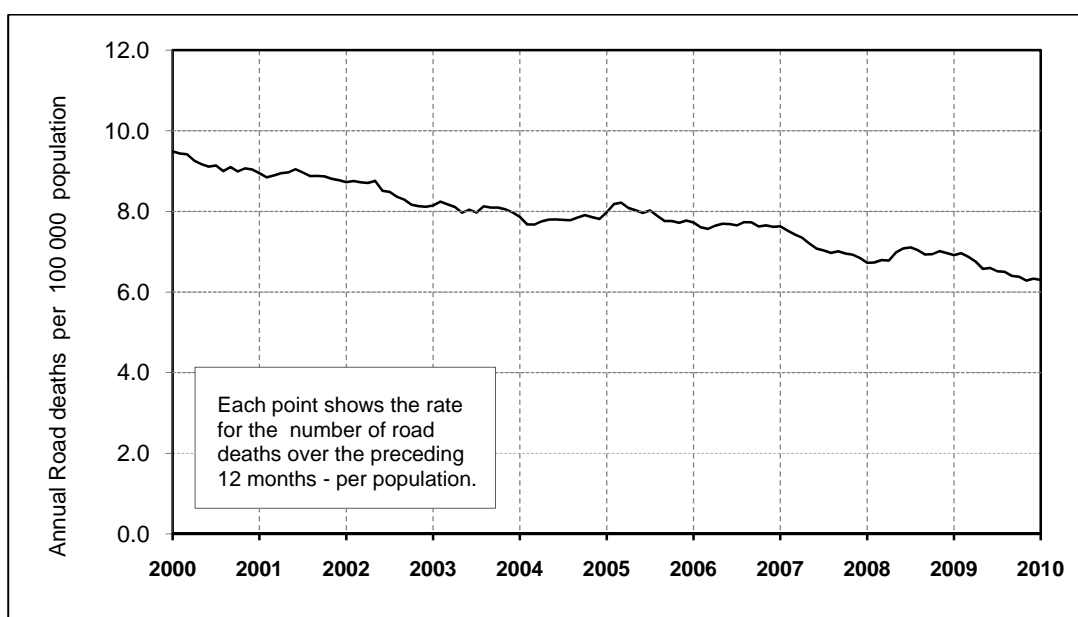
‡ Average annual percentage change based on the exponential trend from the year ending December 2005 to year ending December 2010.

ROAD DEATH RATES

Road deaths per 100,000 population

	NSW	Vic	Qld	SA	WA	Tas	NT	ACT	Australia
12-months to date									
Jan 2010 - Dec 2010	5.8	5.2	5.5	7.2	8.4	6.1	21.3	5.0	6.1
Jan 2009 - Dec 2009	6.4	5.3	7.5	7.3	8.5	12.7	13.7	3.4	6.8
Jan 2008 - Dec 2008	5.3	5.7	7.6	6.2	9.6	7.8	34.0	4.0	6.7
Calendar year									
2010	5.8	5.2	5.5	7.2	8.4	6.1	21.3	5.0	6.1
2005	7.5	6.9	8.3	9.5	8.1	10.5	26.7	7.9	8.0
2000	9.3	8.6	8.9	11.0	11.3	9.1	26.1	5.7	9.5

Australian road deaths per year per 100 000 population - moving 12-monthly data



CHARACTERISTICS OF FATAL CRASHES

Proportion (per cent) of fatal crashes by speed limit, crash type, time of day, and day of week.
Two years ended December 2010 and two years ended December 2005

	Speed limit (km/h) ^a			Time of Day	
	Up to 60	65-95	100+	Day	Night ^b
Jan 2009 - Dec 2010	29.8%	22.8%	47.4%	58.4%	41.6%
Jan 2004 - Dec 2005	32.3%	21.8%	45.9%	54.9%	45.1%
	Crash Type			Day of week	
	Pedestrian crash	Other single veh. Crash	Other multiple veh. crash	Week day	Week-end ^c
Jan 2009 - Dec 2010	13.9%	46.4%	39.7%	59.9%	40.1%
Jan 2004 - Dec 2005	15.2%	44.3%	40.6%	58.2%	41.8%

^a Excludes ACT

^b 6:00 pm to 5:59 am

^c 6:00 pm Friday to 5:59 am Monday

ROAD DEATHS BY AGE, GENDER AND ROAD USER GROUP

Road deaths by age and gender
for 12 months ended December 2010 and December 2009

	0-16 years	17-25 years	26-39 years	40-59 years	60+ years	All deaths ^a
Males						
Jan 2010 - Dec 2010	52	257	237	264	177	993
Jan 2009 - Dec 2009	56	275	283	285	178	1,077
% change	-7.1%	-6.5%	-16.3%	-7.4%	-0.6%	-7.8%
Females						
Jan 2010 - Dec 2010	24	77	72	94	103	374
Jan 2009 - Dec 2009	45	86	73	104	101	409
% change	-46.7%	-10.5%	-1.4%	-9.6%	2.0%	-8.6%
Persons^b						
Jan 2010 - Dec 2010	77	334	309	358	280	1,368
Jan 2009 - Dec 2009	105	361	356	389	279	1,490
% change	-26.7%	-7.5%	-13.2%	-8.0%	0.4%	-8.2%

a Includes road users with unstated age

b Includes road users with unstated gender

Road deaths by age for each main road user group

	0-16 years	17-25 years	26-39 years	40-59 years	60+ years	All deaths ^a
Occupants^b						
Jan 2010 - Dec 2010	57	247	203	207	204	926
Jan 2009 - Dec 2009	82	291	232	244	190	1,039
% change	-30.5%	-15.1%	-12.5%	-15.2%	7.4%	-10.9%
Motorcyclists^c						
Jan 2010 - Dec 2010	2	48	67	89	16	224
Jan 2009 - Dec 2009	3	43	77	92	9	224
% change	-33.3%	11.6%	-13.0%	-3.3%	77.8%	0.0%
Pedestrians						
Jan 2010 - Dec 2010	16	35	32	43	47	173
Jan 2009 - Dec 2009	18	25	42	41	69	195
% change	-11.1%	40.0%	-23.8%	4.9%	-31.9%	-11.3%

a Includes road users with unstated age

b Comprises drivers and passengers

c Includes pillion passengers

TIME SERIES - QUARTERLY SUPPLEMENT

Road deaths by road user group, 1996 to 2010

	<i>Drivers</i>	<i>Passengers</i>	<i>Pedestrians</i>	<i>Motor-cyclists^a</i>	<i>Cyclists</i>	<i>All road users^b</i>
1996	869	499	351	193	57	1,970
1997	776	431	328	177	52	1,767
1998	741	468	318	181	44	1,755
1999	820	428	299	176	40	1,764
2000	852	450	287	191	31	1,817
2001	776	407	290	216	46	1,737
2002	785	422	249	224	34	1,715
2003	747	420	232	188	26	1,621
2004	760	362	220	195	43	1,583
2005	775	347	226	233	41	1,627
2006	757	336	229	238	39	1,599
2007	785	336	204	237	41	1,603
2008	671	302	189	245	28	1,437
2009	709	330	195	224	31	1,490
2010	644	282	173	224	40	1,368

a Includes pillion passengers

b Includes road users not separately specified

Road deaths by State/Territory, 1996 to 2010

	<i>NSW</i>	<i>Vic</i>	<i>Qld</i>	<i>SA</i>	<i>WA</i>	<i>Tas</i>	<i>NT</i>	<i>ACT</i>	<i>Australia</i>
1996	581	417	385	181	247	64	72	23	1,970
1997	576	377	360	148	197	32	60	17	1,767
1998	556	390	279	168	223	48	69	22	1,755
1999	577	383	314	151	218	53	49	19	1,764
2000	603	407	317	166	212	43	51	18	1,817
2001	524	444	324	153	165	61	50	16	1,737
2002	561	397	322	154	179	37	55	10	1,715
2003	539	330	310	157	180	41	53	11	1,621
2004	510	343	311	139	178	58	35	9	1,583
2005	508	346	330	148	163	51	55	26	1,627
2006	496	337	335	117	200	55	46	13	1,599
2007	435	332	360	124	235	45	58	14	1,603
2008	374	303	328	99	205	39	75	14	1,437
2009	453	290	331	119	190	64	31	12	1,490
2010	421	291	247	118	193	31	49	18	1,368

DEATH RATES - QUARTERLY SUPPLEMENT

Road death – Rates by State/Territory

	<i>NSW</i>	<i>Vic</i>	<i>Qld</i>	<i>SA</i>	<i>WA</i>	<i>Tas</i>	<i>NT</i>	<i>ACT</i>	<i>Australia</i>
Per capita ^a									
2010	5.82	5.25	5.47	7.17	8.40	6.11	21.33	5.02	6.12
2005	7.52	6.85	8.26	9.53	8.08	10.49	26.65	7.87	7.98
Per registered vehicle ^b									
2009	0.99	0.72	1.01	0.98	1.04	1.60	2.41	0.49	0.95
2004	1.26	0.96	1.17	1.27	1.20	1.66	3.30	0.42	1.17

a Annual deaths per 100,000 population: 2010 at June 30 (preliminary data); taken from ABS catalogue 3201.0

b Annual deaths per 10,000 registered motor vehicles at 31 March taken from ABS catalogue 9309.0.

DEATHS BY AGE AND ROAD USER GROUP - QUARTERLY SUPPLEMENT

Road deaths by road user group and age
for 12 months ended December 2010, December 2009 and five year trend

	0-16 years	17-20 years	21-25 years	26-39 years	40-59 years	60+ years	All deaths ^d
Drivers							
Jan 2010 - Dec 2010	5	89	78	156	175	138	644
Jan 2009 - Dec 2009	8	84	94	182	205	136	709
% change	-37.5	6.0	-17.0	-14.3	-14.6	1.5	-9.2
Ave annual % change ^a YE Dec 2005 to YE Dec 2010	3.0	-3.7	-6.7	-6.6	-0.1	-2.2	-3.6
Passengers							
Jan 2010 - Dec 2010	52	49	31	47	32	66	282
Jan 2009 - Dec 2009	74	60	53	50	39	54	330
% change	-29.7	-18.3	-41.5	-6.0	-17.9	22.2	-14.5
Ave annual % change ^a YE Dec 2005 to YE Dec 2010	-4.3	-5.8	-2.7	-0.4	-8.2	-0.4	-3.4
Pedestrians							
Jan 2010 - Dec 2010	16	17	18	32	43	47	173
Jan 2009 - Dec 2009	18	18	7	42	41	69	195
% change	-11.1	-5.6	157.1	-23.8	4.9	-31.9	-11.3
Ave annual % change ^a YE Dec 2005 to YE Dec 2010	-8.4	1.4	-4.2	-4.4	-0.9	-9.3	-5.3
Motorcyclists^b							
Jan 2010 - Dec 2010	2	15	33	67	89	16	224
Jan 2009 - Dec 2009	3	16	27	77	92	9	224
% change	-33.3	-6.3	22.2	-13.0	-3.3	77.8	0.0
Ave annual % change ^a YE Dec 2005 to YE Dec 2010	-13.5	-5.0	-9.7	-5.6	9.8	2.6	-1.0
Cyclists							
Jan 2010 - Dec 2010	1	1	3	7	17	11	40
Jan 2009 - Dec 2009	2	1	1	5	11	11	31
All road users^c							
Jan 2010 - Dec 2010	77	171	163	309	358	280	1,368
Jan 2009 - Dec 2009	105	179	182	356	389	279	1,490
% change	-26.7	-4.5	-10.4	-13.2	-8.0	0.4	-8.2
Ave annual % change ^a YE Dec 2005 to YE Dec 2010	-6.3	-4.3	-5.8	-5.4	0.8	-2.9	-3.3

^a This represents the average annual exponential change between the annual count of 5-years ago and the current annual count

^b Includes pillion passengers

^c Includes road users not separately classified

^d Includes deaths with unstated age

DEATHS BY STATE / TERRITORY AND ROAD USER

Road deaths by road user group and State/Territory
for 12 months ended December 2010, December 2009 and five year trend

	NSW	Vic	Qld	SA	WA	Tas	NT	ACT	Australia
Drivers									
Jan 2010 - Dec 2010	195	130	113	57	100	16	24	9	644
Jan 2009 - Dec 2009	210	142	155	60	92	30	16	4	709
% change	-7.1	-8.5	-27.1	-5.0	8.7	-46.7	50.0	125.0	-9.2
Ave annual % change ^a Dec 2005 to Dec 2010	-4.3	-4.6	-5.2	-3.9	1.9	-6.8	0.6	-4.5	-3.6
Passengers									
Jan 2010 - Dec 2010	88	62	49	24	39	5	13	2	282
Jan 2009 - Dec 2009	102	54	68	33	42	21	6	4	330
% change	-13.7	14.8	-27.9	-27.3	-7.1	-76.2	116.7	-50.0	-14.5
Ave annual % change ^a Dec 2005 to Dec 2010	-2.2	-5.2	-3.2	-4.2	-1.3	-9.0	-7.1	4.0	-3.4
Pedestrians									
Jan 2010 - Dec 2010	64	38	28	16	14	6	7	0	173
Jan 2009 - Dec 2009	59	50	40	9	25	3	7	2	195
% change	8.5	-24.0	-30.0	77.8	-44.0	100.0	0.0	-100.0	-11.3
Ave annual % change ^a Dec 2005 to Dec 2010	-8.1	-3.8	-6.3	1.0	-1.1	12.4	-6.8		-5.3
Motorcyclists ^b									
Jan 2010 - Dec 2010	61	49	50	16	35	3	5	5	224
Jan 2009 - Dec 2009	69	38	60	15	31	8	1	2	224
% change	-11.6	28.9	-16.7	6.7	12.9	-62.5	400.0	150.0	0.0
Ave annual % change ^a Dec 2005 to Dec 2010	-0.6	-1.6	-3.2	-3.5	7.5	-7.4	1.2	-8.9	-1.0
Cyclists									
Jan 2010 - Dec 2010	13	8	7	5	4	1	0	2	40
Jan 2009 - Dec 2009	13	6	8	2	0	2	0	0	31
All road users ^c									
Jan 2010 - Dec 2010	421	291	247	118	193	31	49	18	1,368
Jan 2009 - Dec 2009	453	290	331	119	190	64	31	12	1,490
% change	-7.1	0.3	-25.4	-0.8	1.6	-51.6	58.1	50.0	-8.2
Ave annual % change ^a Dec 2005 to Dec 2010	-3.8	-3.9	-4.4	-3.7	1.6	-6.0	-4.2	-5.8	-3.3

^a This represents the average annual exponential change between the annual count of 5-years ago and the current annual count

^b Includes pillion passengers

^c Includes road users not separately classified

Appendix

1. Definition

The road safety agencies in each jurisdiction use detailed criteria to define road crashes and road deaths. Briefly, a death is classified as resulting from a road crash if the crash occurred on a public road, is unintentional and the death occurred within 30 days from injuries sustained in the crash.

Road deaths from recent months are preliminary and subject to revision.

2. Other sources for the tables in this bulletin

The underlying database used to produce this bulletin is available for online querying and data extraction at

http://www.infrastructure.gov.au/roads/safety/road_fatality_statistics/fatal_road_crash_database.aspx

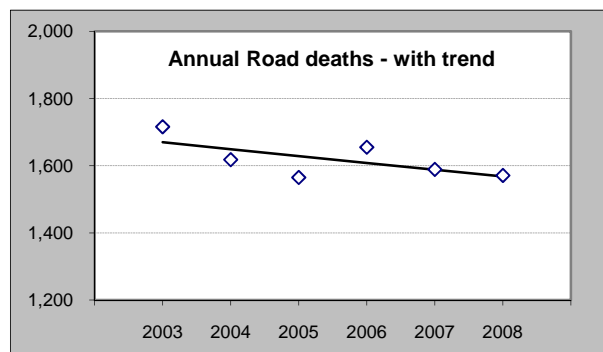
3. Estimation of five year trends

In this bulletin, the figures for the 'Average annual per cent change over 5 years' are calculated by fitting an exponential trend line to the last six data points (years 0 to 5).

The Excel function `—logest—` performs the fit. The resulting trend line represents a constant annual percent change over the period. An example is given below :

Example : Average Annual Change in Road Deaths

Road deaths - year ended March			% Change
	A	B	
0	2003	1,716	
1	2004	1,618	-5.7%
2	2005	1,565	-3.3%
3	2006	1,655	5.8%
4	2007	1,589	-4.0%
5	2008	1,571	-1.1%
Average =			-1.2%



Average annual growth = $\text{Index}(\text{Logest}(B1:B6, A1:A6), 1) - 1 = -1.2\%$