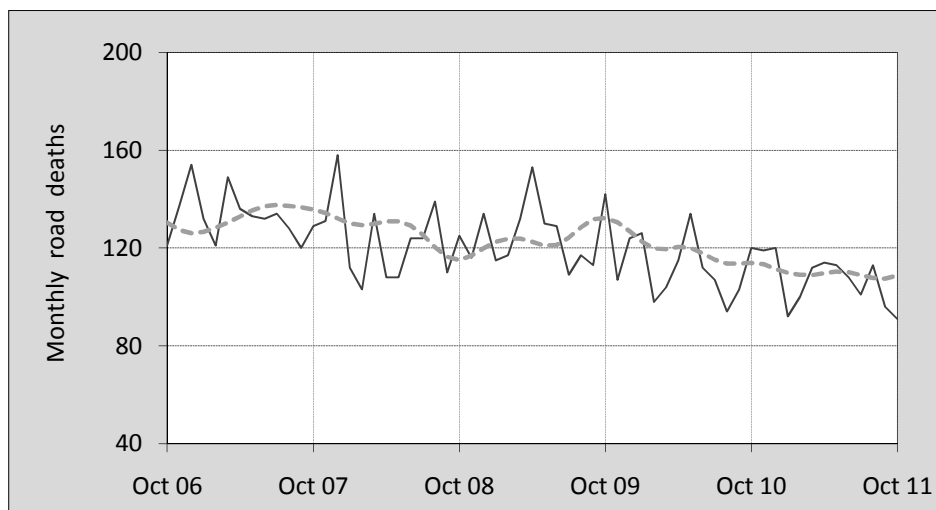




This month's key figures

- There were 91 deaths from road crashes in October 2011. Compared to the average for the month of October over the last five years, this is a 28.6 per cent decrease.
- During the 12 months ended October 2011 there were 1,279 deaths. This is a 4.8 per cent decrease from the 12-monthly period ending October 2010.
- The rate of annual deaths per 100 000 population presently stands at 5.7. This is a 5.0 per cent decrease from the 12-monthly period ending October 2010.

Monthly Australian road deaths — last five years, with trend



Data Sources

Data are obtained from

- Roads and Traffic Authority, NSW
- Vicroads
- Department of Transport and Main Roads, Queensland
- Department for Transport, Energy and Infrastructure, S.A.
- Western Australia Police
- Department of Infrastructure, Energy and Resources, Tasmania
- Department of Lands and Planning, Northern Territory
- Department of Territory and Municipal Services, ACT
- Australian Bureau of Statistics (3101.0)

Inquiries

For further information about data in this bulletin, contact:

Bureau of Infrastructure, Transport and

Regional Economics

Web : www.bitre.gov.au

Email : roadsafety@infrastructure.gov.au

Road deaths from recent months are preliminary and subject to revision.

© Copyright. Commonwealth of Australia

I. Current month and year to date

Deaths by jurisdiction

Current month	NSW	Vic	Qld	SA	WA	Tas	NT	ACT	Australia
October 2010	39	36	17	12	12	1	3	0	120
October 2011	24	20	16	7	18	1	5	0	91
Per cent change	-38.5	-44.4	-5.9	-41.7	50.0	0.0	66.7	-	-24.2

Year to date	NSW	Vic	Qld	SA	WA	Tas	NT	ACT	Australia
January 2010 - October 2010	342	248	199	98	144	24	40	18	1 113
January 2011 - October 2011	302	231	211	90	148	20	32	6	1 040
Latest per cent change	-11.7	-6.9	6.0	-8.2	2.8	-16.7	-20.0	-66.7	-6.6

2. Yearly deaths — last five 12 monthly periods

Deaths by jurisdiction

12 months ended October	NSW	Vic	Qld	SA	WA	Tas	NT	ACT	Australia
2007	435	335	372	115	228	53	51	16	1 605
2008	381	319	328	107	208	38	80	15	1 476
2009	454	286	343	121	194	61	35	13	1 507
2010	408	303	240	115	183	33	44	18	1 344
2011	365	271	261	110	197	27	41	7	1 279
Latest per cent change	-10.5	-10.6	8.8	-4.3	7.7	-18.2	-6.8	-61.1	-4.8
Average change per year (per cent)	-2.8	-4.6	-9.7	-0.2	-4.1	-13.8	-9.8	-13.7	-5.3

Deaths by road user

12 months ended October	Driver	Passenger	Pedestrian	Motorcyclist	Cyclist	Total ^a
2007	798	323	202	241	41	1 605
2008	700	320	179	251	25	1 476
2009	695	322	216	236	36	1 507
2010	635	294	166	212	36	1 344
2011	586	266	188	201	37	1 279
latest per cent change	-7.7	-9.5	13.3	-5.2	2.8	-4.8
Average change per year (per cent)	-6.9	-4.6	-2.2	-5.2	1.6	-5.3

^a Includes deaths of unknown road user type

Deaths by age-group (years)

12 months ended October	0 to 16	17 to 25	26 to 39	40 to 59	60 to 69	≥ 70	Total ^a
2007	103	393	408	389	113	199	1 605
2008	85	388	353	366	90	193	1 476
2009	103	384	363	383	105	169	1 507
2010	79	324	311	358	103	168	1 344
2011	87	286	269	342	112	179	1 279
<i>latest per cent change</i>	10.1	-11.7	-13.5	-4.5	8.7	6.5	-4.8
<i>Average change per year (per cent)</i>	-4.0	-7.8	-9.2	-2.8	1.2	-3.4	-5.3

a Includes deaths to persons with age not recorded.

Deaths by gender

12 months ended October	Males	Females	Total ^b
2007	1 178	427	1 605
2008	1 090	385	1 476
2009	1 103	402	1 507
2010	962	379	1 344
2011	922	353	1 279
<i>latest per cent change</i>	-4.2	-6.9	-4.8
<i>Average change per year (per cent)</i>	-6.0	-3.9	-5.3

b Includes deaths to persons with gender not recorded.

3. Annual deaths per 100,000 population

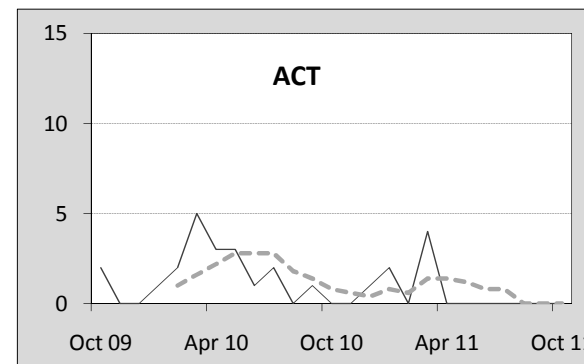
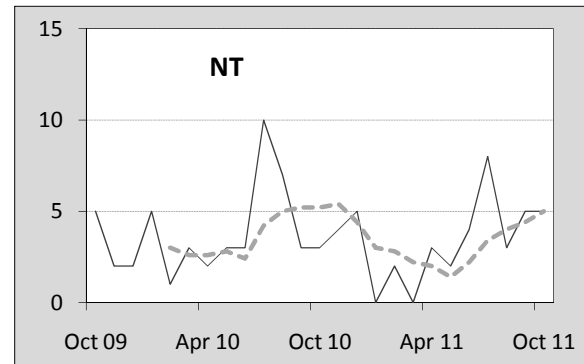
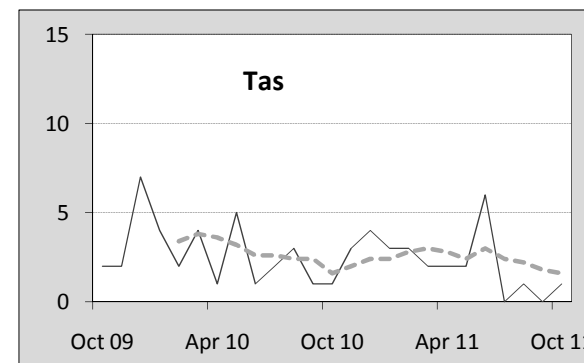
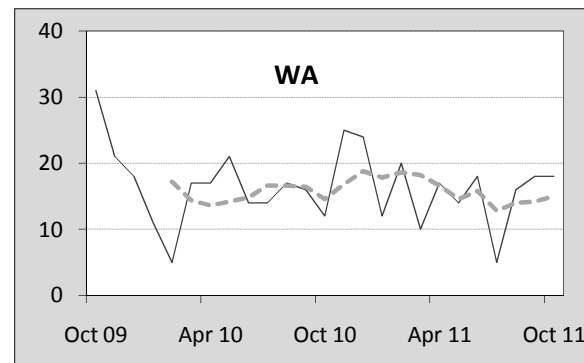
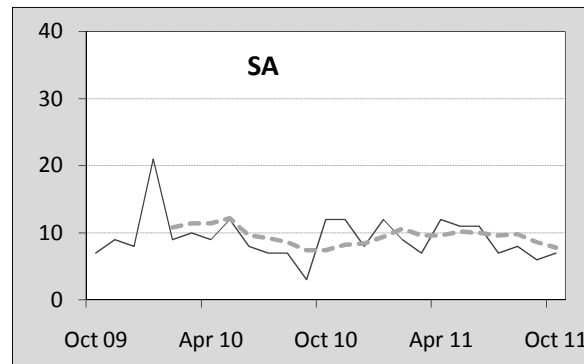
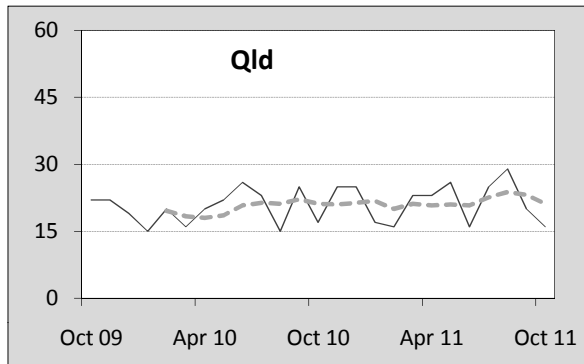
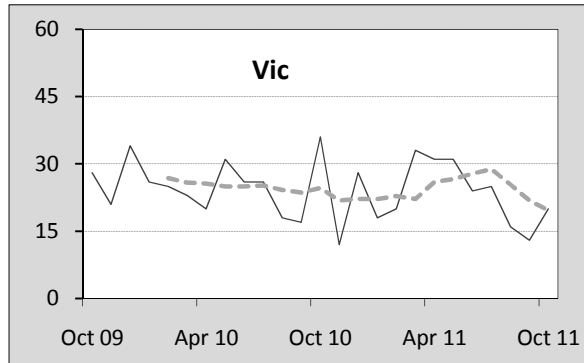
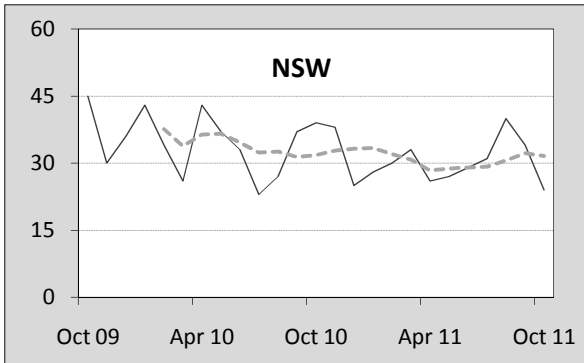
By jurisdiction

12 months ended October	NSW	Vic	Qld	SA	WA	Tas	NT	ACT	Australia
2007	6.31	6.43	8.90	7.26	10.83	10.75	23.84	4.71	7.64
2008	5.44	6.01	7.65	6.68	9.60	7.64	36.48	4.35	6.89
2009	6.38	5.27	7.78	7.46	8.67	12.13	16.01	3.70	6.89
2010	5.65	5.48	5.33	7.00	8.00	6.51	19.22	5.03	6.03
2011	5.06	4.91	5.73	6.67	8.59	5.31	17.78	1.96	5.73
<i>latest per cent change</i>	-10.4	-10.4	7.5	-4.7	7.4	-18.4	-7.5	-61.0	-5.0

Calendar year	NSW	Vic	Qld	SA	WA	Tas	NT	ACT	Australia
2006	7.28	6.57	8.19	7.46	9.71	11.23	21.84	3.89	7.73
2007	6.30	6.36	8.58	7.82	11.12	9.12	27.00	4.10	7.61
2008	5.33	5.69	7.61	6.17	9.42	7.83	34.01	4.04	6.68
2009	6.36	5.32	7.48	7.33	8.47	12.52	13.70	3.41	6.78
2010	5.60	5.19	5.52	7.18	8.42	6.11	21.33	5.30	6.05
<i>latest per cent change</i>	-11.9	-2.5	-26.3	-2.1	-0.6	-51.2	55.7	55.6	-10.7

Monthly deaths by jurisdiction — last 24 months

— raw
 - - - smoothed (unweighted 5-point moving average)



5. Characteristics of fatal crashes

12 months ended October	Crashtype ^a			Posted speed limit				Total ^b
	Single	Multiple	Pedestrian	0 to 60	70 to 90	100	≥ 110	
2007	704	567	201	467	296	488	180	1 472
2008	630	523	178	383	317	445	151	1 331
2009	649	508	210	433	313	426	172	1 367
2010	555	510	164	348	269	427	159	1 229
2011	513	470	186	334	249	378	157	1 169
Average change per year (per cent)	-7.3	-3.9	-2.3	-7.4	-5.0	-5.4	-2.2	-5.3

12 months ended October	Day of week ^c		Time of Day ^d	
	Weekday	Weekend	Day	Night
2007	878	571	846	626
2008	771	546	727	604
2009	853	499	781	586
2010	701	510	716	513
2011	707	445	712	457
Average change per year (per cent)	-5.1	-5.5	-3.5	-7.6

a 'Single' and 'Multiple' refer to the the number of vehicles involved in a fatal crash where there is no pedestrian killed.

b Includes crashes where speed limit is unknown

c 'Weekday' refers to 6am Monday through to 5:59pm Friday.

d 'Day' refers to 6am through to 5:59 pm.

Appendix

Definition

The road safety agencies in each jurisdiction use detailed criteria to define road crashes and road deaths. Briefly, a death is classified as resulting from a road crash if the crash occurred on a public road, is unintentional and the death occurred within 30 days from injuries sustained in the crash.

Population rates

Rates per population are based on the deaths to the current 12 monthly period, and the population at the midpoint of the period. The population at midpoints are interpolated if necessary.

Average (%) change per year

Calculated by fitting an exponential curve through the five data points, and quoting the constant (annual) change of this curve.

Other sources for the tables in this bulletin

The underlying database used to produce this bulletin — *the Australian Road Deaths Database*

is available for online querying and data extraction at <http://www.bitre.gov.au/info.aspx?Nodetd=167>

Road deaths from recent months are preliminary and subject to revision.