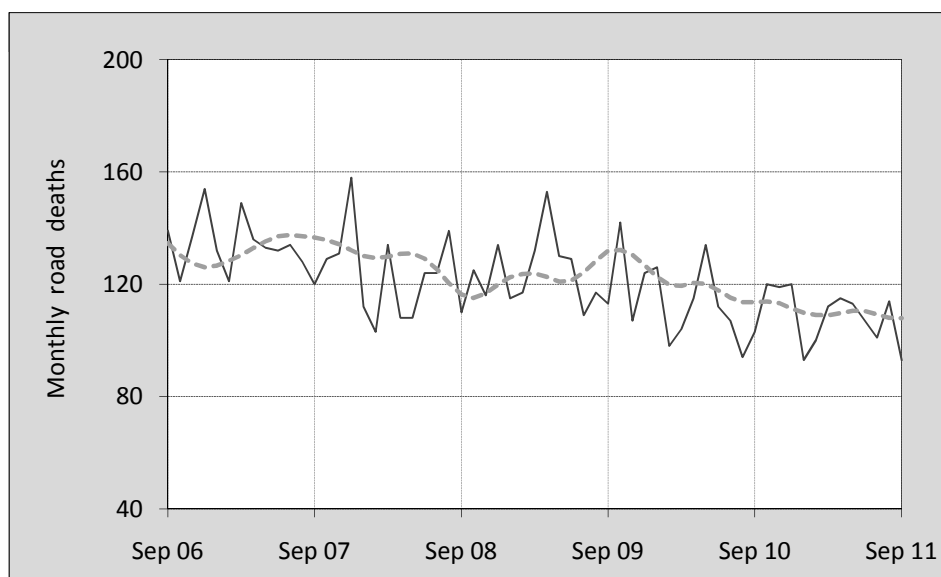




This month's key figures

- There was a total of 93 road deaths in September 2011. Compared to the average for the month of September over the last five years, this is a 20.5 per cent decrease.
- During the 12 months ended September 2011 there were 1,307 deaths. This is a 4.3 per cent decrease from the 12-monthly period ended September 2010.
- The rate of annual deaths per population presently stands at 5.9. This is a 4.6 per cent decrease from the 12-monthly period ending September 2010.

Monthly Australian road deaths — last five years, with trend



Data Sources

Data are obtained from

- Roads and Traffic Authority, NSW
- Vicroads
- Department of Transport and Main Roads, Queensland
- Department for Transport, Energy and Infrastructure, S.A.
- Western Australia Police
- Department of Infrastructure, Energy and Resources, Tasmania
- Department of Lands and Planning, Northern Territory
- Department of Territory and Municipal Services, ACT
- Australian Bureau of Statistics (3101.0)

Inquiries

For further information about data in this bulletin, contact:

Bureau of Infrastructure, Transport and Regional Economics

Web : www.bitre.gov.au

Email : roadsafety@infrastructure.gov.au

Road deaths from recent months are preliminary and subject to revision.

© Copyright. Commonwealth of Australia

I. Current month and year to date

Deaths by jurisdiction

Current month	NSW	Vic	Qld	SA	WA	Tas	NT	ACT	Australia
September 2010	37	17	25	3	16	1	3	1	103
September 2011	31	13	20	6	18	0	5	0	93
Per cent change	-16.2	-23.5	-20.0	100.0	12.5	-100.0	66.7	-	-9.7

Year to date	NSW	Vic	Qld	SA	WA	Tas	NT	ACT	Australia
January 2010 - September 2010	303	212	182	86	132	23	37	18	993
January 2011 - September 2011	277	211	195	83	130	19	27	6	948
Latest per cent change	-8.6	-0.5	7.1	-3.5	-1.5	-17.4	-27.0	-66.7	-4.5

2. Yearly deaths — last five 12 monthly periods

Deaths by jurisdiction

12 months ended September	NSW	Vic	Qld	SA	WA	Tas	NT	ACT	Australia
2007	444	318	378	108	229	54	49	17	1,597
2008	375	331	325	112	206	37	78	16	1,480
2009	448	283	347	120	181	61	39	11	1,490
2010	414	295	245	110	202	34	46	20	1,366
2011	379	287	262	115	191	27	39	7	1,307
Latest per cent change	-8.5	-2.7	6.9	4.5	-5.4	-20.6	-15.2	-65.0	-4.3
Average change per year (per cent)	-2.2	-3.2	-9.7	1.1	-3.8	-13.7	-9.4	-14.4	-4.7

Deaths by road user

12 months ended September	Driver	Passenger	Pedestrian	Motorcyclist	Cyclist	Total ^a
2007	796	320	207	234	40	1,597
2008	700	320	182	248	29	1,480
2009	686	325	204	240	33	1,490
2010	655	289	169	214	38	1,366
2011	595	272	195	205	39	1,307
latest per cent change	-9.2	-5.9	15.4	-4.2	2.6	-4.3
Average change per year (per cent)	-6.3	-4.2	-1.9	-4.0	2.2	-4.7

^a Includes deaths of unknown road user type

Deaths by age-group (years)

12 months ended September	0 to 16	17 to 25	26 to 39	40 to 59	60 to 69	≥ 70	Total ^a
2007	100	388	408	382	115	204	1,597
2008	88	389	362	366	82	192	1,480
2009	101	388	356	373	101	171	1,490
2010	84	314	320	365	116	166	1,366
2011	79	299	273	353	111	179	1,307
latest per cent change	-6.0	-4.8	-14.7	-3.3	-4.3	7.8	-4.3
Average change per year (per cent)	-5.0	-7.1	-8.9	-1.6	2.8	-4.0	-4.7

a Includes deaths to persons with age not recorded.

Deaths by gender

12 months ended September	Males	Females	Total ^b
2007	1,167	430	1,597
2008	1,092	387	1,480
2009	1,100	388	1,490
2010	983	380	1,366
2011	939	364	1,307
latest per cent change	-4.5	-4.2	-4.3
Average change per year (per cent)	-5.3	-3.5	-4.7

b Includes deaths to persons with gender not recorded.

3. Annual deaths per 100,000 population

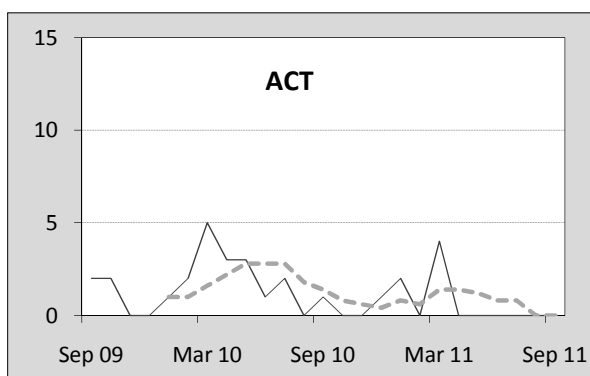
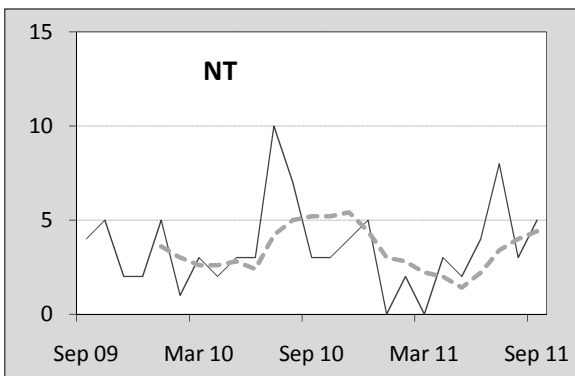
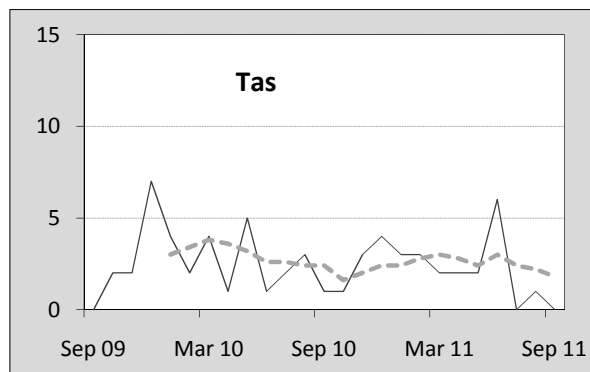
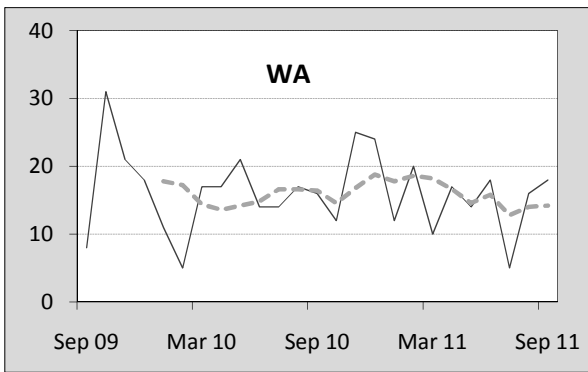
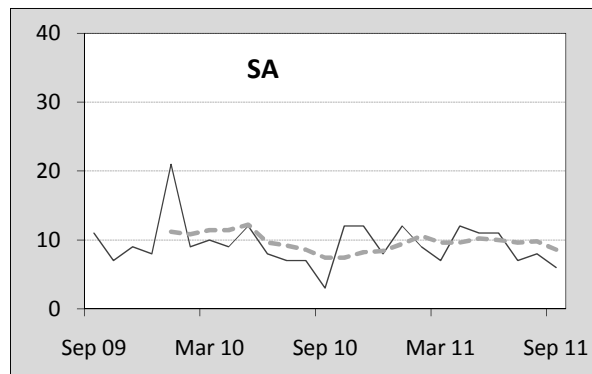
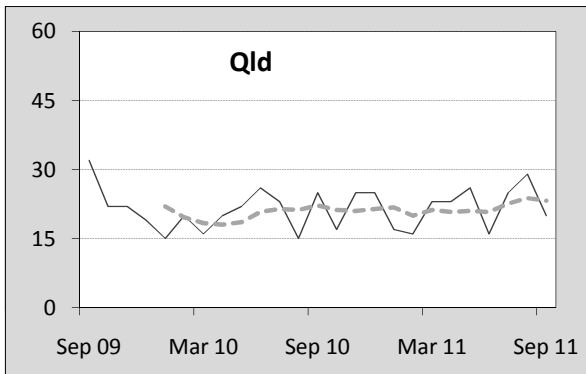
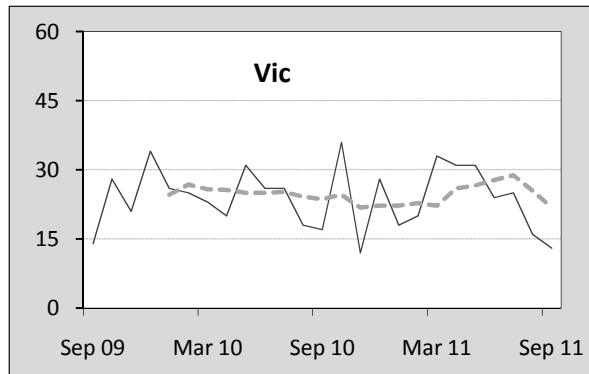
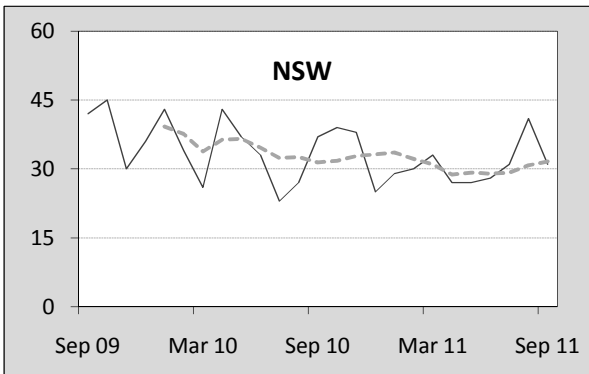
By jurisdiction

12 months ended September	NSW	Vic	Qld	SA	WA	Tas	NT	ACT	Australia
2007	6.45	6.11	9.07	6.83	10.90	10.96	22.95	5.01	7.61
2008	5.36	6.24	7.59	7.00	9.53	7.44	35.67	4.64	6.92
2009	6.31	5.22	7.89	7.41	8.11	12.14	17.84	3.13	6.82
2010	5.74	5.34	5.45	6.70	8.85	6.70	20.13	5.60	6.14
2011	5.26	5.20	5.76	6.98	8.33	5.31	16.92	1.96	5.86
latest per cent change	-8.4	-2.6	5.7	4.1	-5.8	-20.8	-15.9	-64.9	-4.6

Calendar year	NSW	Vic	Qld	SA	WA	Tas	NT	ACT	Australia
2006	7.28	6.57	8.19	7.46	9.71	11.23	21.84	3.89	7.73
2007	6.30	6.36	8.58	7.82	11.12	9.12	27.00	4.10	7.61
2008	5.33	5.69	7.61	6.17	9.42	7.83	34.01	4.04	6.68
2009	6.36	5.32	7.48	7.33	8.47	12.52	13.70	3.41	6.78
2010	5.60	5.19	5.52	7.18	8.42	6.11	21.33	5.30	6.05
latest per cent change	-11.9	-2.5	-26.3	-2.1	-0.6	-51.2	55.7	55.6	-10.7

Monthly deaths by jurisdiction — last 24 months

— raw
 - - - smoothed (unweighted 5-point moving average)



5. Characteristics of fatal crashes

12 months ended September	Crash type ^a			Posted speed limit				Total ^b
	Single	Multiple	Pedestrian	0 to 60	70 to 90	100	≥ 110	
2007	694	570	206	466	302	481	178	1,470
2008	636	519	181	387	310	452	149	1,336
2009	650	497	200	424	324	418	160	1,347
2010	563	523	166	355	268	429	172	1,252
2011	524	480	192	335	250	395	152	1,196
<i>Average change per year (per cent)</i>	-6.6	-3.3	-2.2	-7.2	-5.1	-4.4	-1.7	-4.7

12 months ended September	Day of week ^c		Time of Day ^d	
	Weekday	Weekend	Day	Night
2007	853	595	845	625
2008	775	546	729	607
2009	840	493	773	574
2010	733	500	730	522
2011	722	458	725	471
<i>Average change per year (per cent)</i>	-3.8	-5.9	-3.0	-6.9

a 'Single' and 'Multiple' refer to the the number of vehicles involved in a fatal crash where there is no pedestrian killed.

b Includes crashes where speed limit is unknown

c 'Weekday' refers to 6am Monday through to 5:59pm Friday.

d 'Day' refers to 6am through to 5:59 pm.

Appendix

Definition

The road safety agencies in each jurisdiction use detailed criteria to define road crashes and road deaths. Briefly, a death is classified as resulting from a road crash if the crash occurred on a public road, is unintentional and the death occurred within 30 days from injuries sustained in the crash.

Population rates

Rates per population are based on the deaths to the current 12 monthly period, and the population at the midpoint of the period. The population at midpoints are interpolated if necessary.

Average (%) change per year

Calculated by fitting an exponential curve through the five data points, and quoting the constant (annual) change of this curve.

Other sources for the tables in this bulletin

The underlying database used to produce this bulletin — *the Australian Road Deaths Database* is available for online querying and data extraction at <http://www.bitre.gov.au/info.aspx?Nodetd=167>

Road deaths from recent months are preliminary and subject to revision.