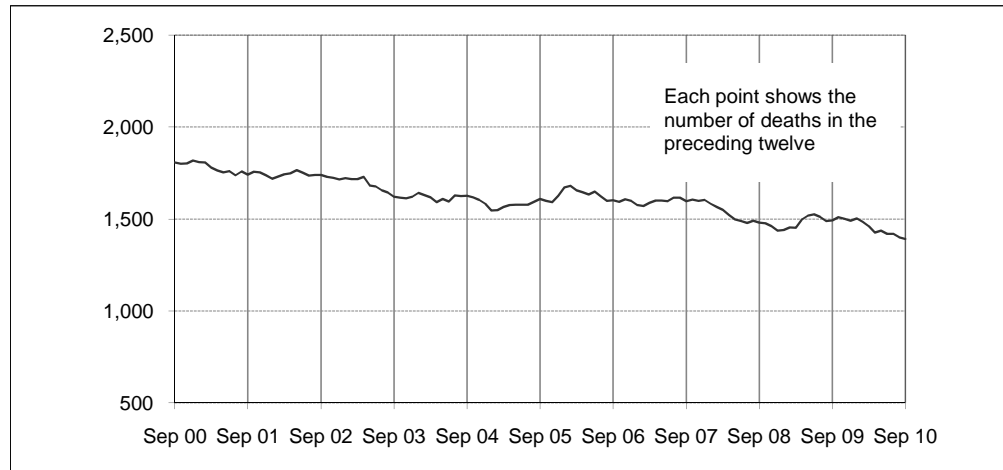




Australian road deaths for 12 months to date — last 10 years



Inquiries

For further information about data in this bulletin, contact:

Infrastructure, Surface Transport & Road Safety Statistics
Bureau of Infrastructure, Transport and Regional Economics
Department of Infrastructure and Transport,
GPO Box 594,
Canberra, ACT 2601
Email: roadsafety@infrastructure.gov.au
Internet: www.infrastructure.gov.au

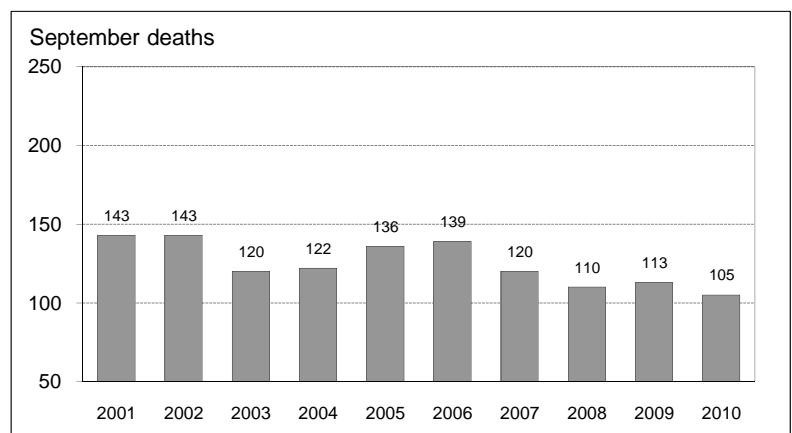
Data Sources

The data presented here are obtained from the following sources:

- Roads and Traffic Authority, NSW
- Vicroads
- Queensland Transport
- Department for Transport, Energy and Infrastructure, South Australia
- Western Australia Police
- Department of Infrastructure, Energy and Resources, Tasmania
- Department of Planning and Infrastructure, Northern Territory
- Territory and Municipal Services, ACT

• Road deaths from recent months are preliminary and subject to revision.

Australian road deaths for September — last 10 years



This month's key figures

There was a total of 105 road deaths in September 2010.
- this is a 7.1 per cent decrease from the September 2009 figure.

There have been 1,018 road deaths in 2010 to the end of September.
- this is a 8.9 per cent decrease from the same 9 month period in 2009.

NUMBER OF ROAD CRASH DEATHS IN EACH STATE / TERRITORY

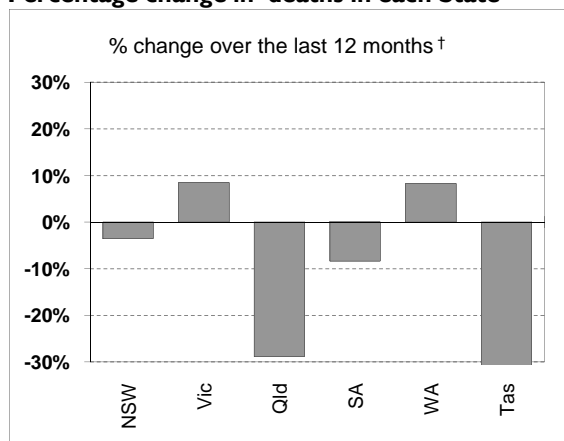
Road deaths by State/Territory

for current month, year to date, 12 months ended September, and five year trend

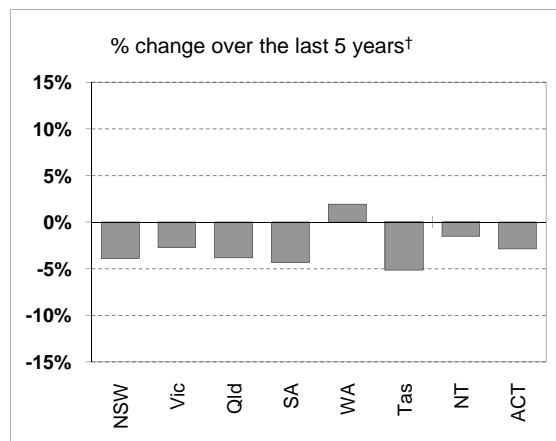
	NSW	Vic	Qld	SA	WA	Tas	NT	ACT	Australia
Current month									
Sep 2010	44	16	25	3	12	1	3	1	105
Sep 2009	42	14	32	11	8	0	4	2	113
% change	4.8	14.3	-21.9	-72.7	50.0	-	-25.0	-50.0	-7.1
Year to date									
Jan 2010 - Sep 2010	320	224	184	86	126	23	37	18	1,018
Jan 2009 - Sep 2009	342	207	268	95	120	53	22	10	1,117
% change	-6.4	8.2	-31.3	-9.5	5.0	-56.6	68.2	80.0	-8.9
12-months to date									
Oct 2009 - Sep 2010	432	307	247	110	196	34	46	20	1,392
Oct 2008 - Sep 2009	448	283	347	120	181	62	40	11	1,492
Difference	-16	24	-100	-10	15	-28	6	9	-100
% change	-3.6	8.5	-28.8	-8.3	8.3	-45.2	15.0	81.8	-6.7
Average annual % change over 5 years^a									
YE September 2005 to YE September 2010	-3.9	-2.7	-3.8	-4.3	1.9	-5.1	-1.5	-2.9	-2.8

^a Average annual percentage change based on the exponential trend for the last five 12-month periods

Percentage change in deaths in each State



[†] Percentage change between the two 12-month periods ending September 2010 and September 2009.
NT and ACT not shown.



[‡] Average annual percentage change based on the exponential trend from the year ending September 2005 to year ending September 2010.

NUMBER OF DEATHS IN EACH ROAD USER GROUP

Road deaths by road user group and gender

for 12 months ended September 2010, September 2009 and five year trend

	Drivers	Passengers	Pedestrians	Motor-cyclists ^a	Cyclists	All road users ^b
Males						
Oct 2009 - Sep 2010	493	157	118	200	36	1,005
Oct 2008 - Sep 2009	514	184	149	226	28	1,102
% change	-4.1	-14.7	-20.8	-11.5	28.6	-8.8
Females						
Oct 2009 - Sep 2010	183	126	55	14	4	383
Oct 2008 - Sep 2009	173	139	56	14	5	388
% change	5.8	-9.4	-1.8	0.0	-20.0	-1.3
Persons^c						
Oct 2009 - Sep 2010	676	287	173	214	40	1,392
Oct 2008 - Sep 2009	687	325	205	240	33	1,492
% change	-1.6	-11.7	-15.6	-10.8	21.2	-6.7
Average annual % change over 5 years^d						
YE September 2005 to YE September 2010	-3.0	-3.1	-5.0	-0.2	-1.7	-2.8

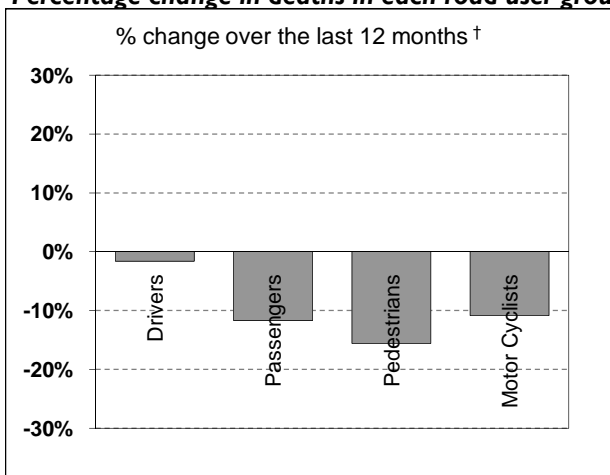
a Includes pillion passengers

b Includes road users not separately specified

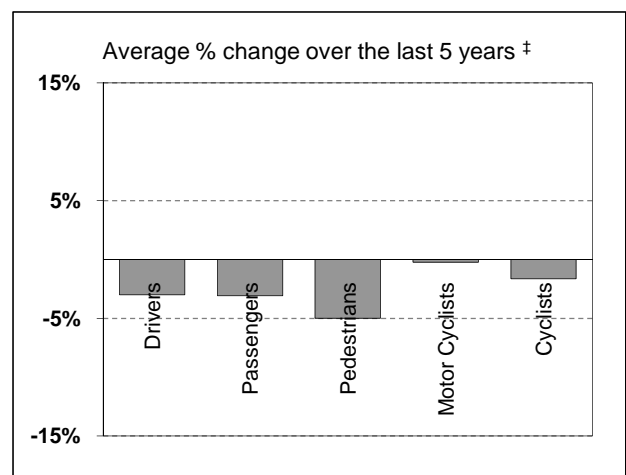
c Includes road users with unstated gender

d Average annual percentage change based on the exponential trend for the last five 12-month periods

Percentage change in deaths in each road user group



† Percentage change between the two 12-month periods ending September 2010 and September 2009. Cyclists not shown.

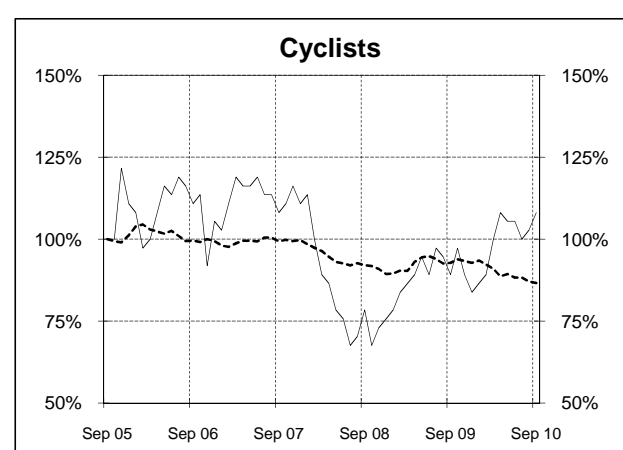
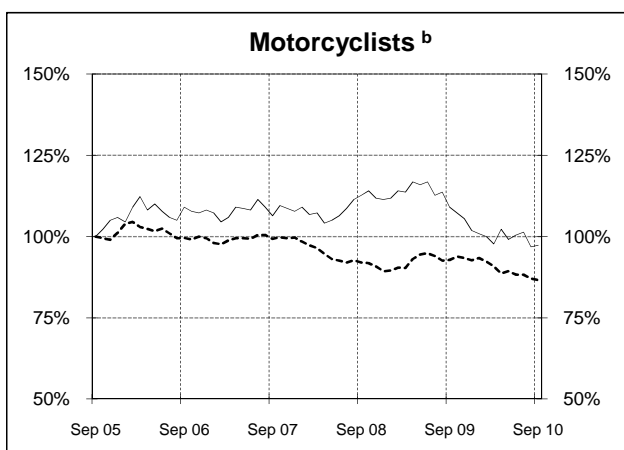
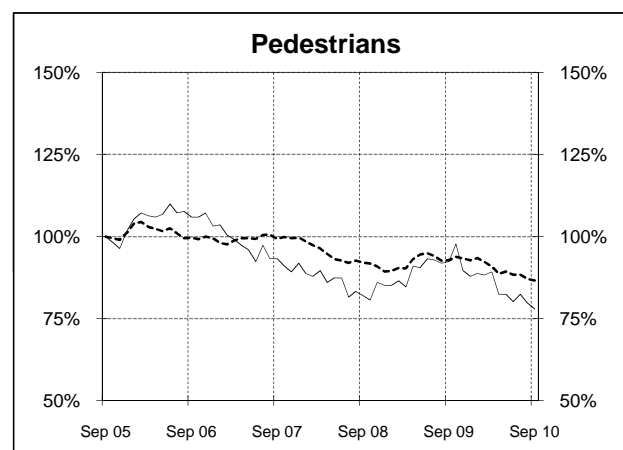
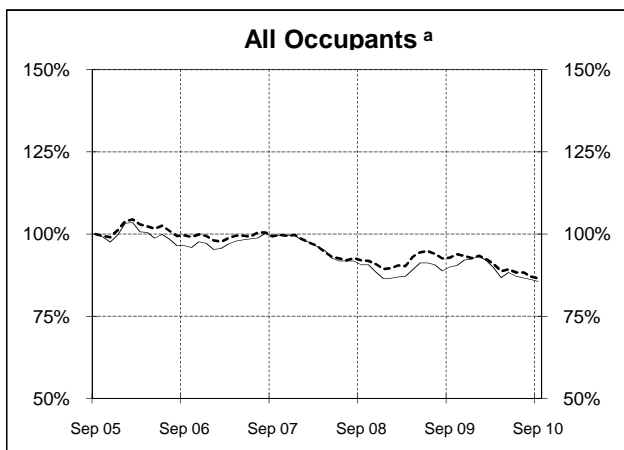
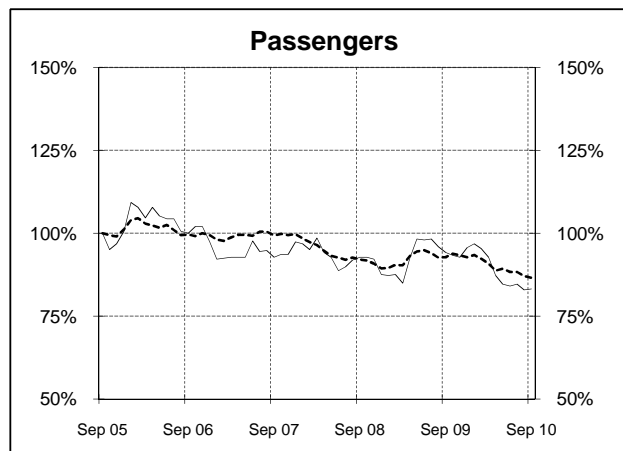
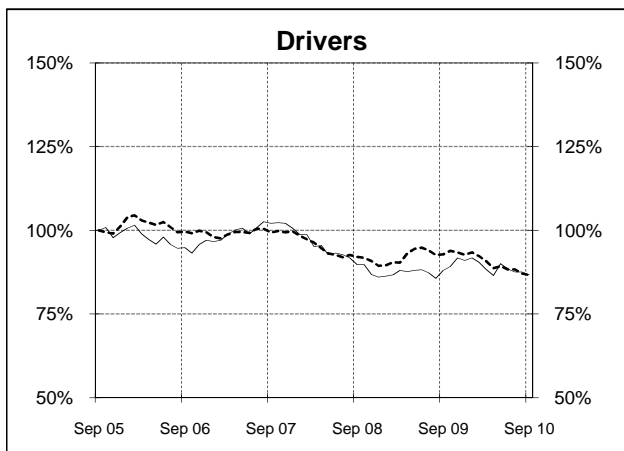
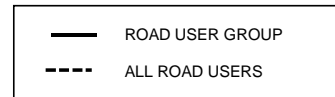


‡ Average annual percentage change based on the exponential trend from the year ending September 2005 to year ending September 2010.

DEATHS IN EACH ROAD USER GROUP - TRENDS

Annual deaths in each road user group - last 5 years

The number shown at each month represents the number of deaths in the preceding 12 months expressed as a percentage of the number of deaths in the 12 months to September 2005.



a Comprises drivers and passengers

b Includes pillion passengers

NUMBER OF FATAL ROAD CRASHES IN EACH STATE / TERRITORY

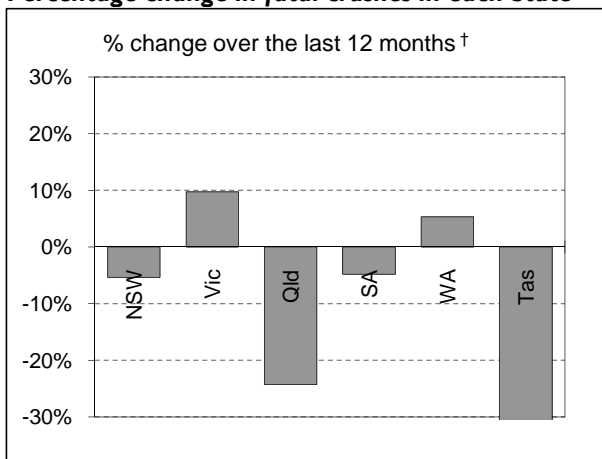
Fatal crashes by State/Territory

for current month, year to date, 12 months ended September, and five year trend.

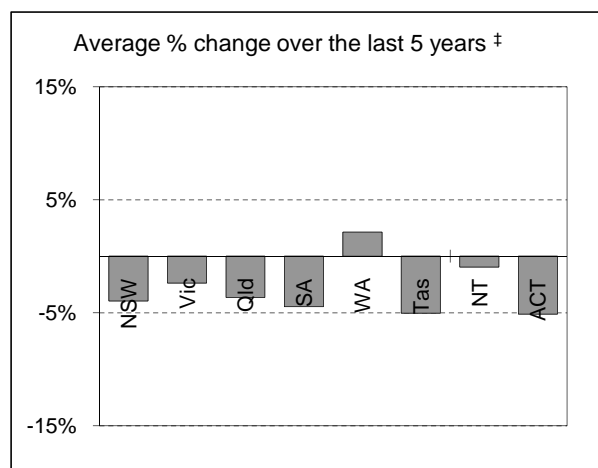
	NSW	Vic	Qld	SA	WA	Tas	NT	ACT	Australia
Current month									
Sep 2010	40	15	23	3	11	1	3	1	97
Sep 2009	37	14	30	10	7	0	4	2	104
% change	8.1	7.1	-23.3	-70.0	57.1	-	-25.0	-50.0	-6.7
Year to date									
Jan 2010 - Sep 2010	292	201	173	76	116	22	35	15	930
Jan 2009 - Sep 2009	311	186	235	81	113	42	22	9	999
% change	-6.1	8.1	-26.4	-6.2	2.7	-47.6	59.1	66.7	-6.9
12 months to date									
Oct 2009 - Sep 2010	389	283	234	99	179	32	44	17	1,277
Oct 2008 - Sep 2009	411	258	309	104	170	50	36	10	1,348
% change	-5.4	9.7	-24.3	-4.8	5.3	-36.0	22.2	70.0	-5.3
Average annual % change over 5 years^a									
YE September 2005 to YE September 2010	-4.0	-2.4	-3.6	-4.5	2.1	-5.0	-0.9	-5.1	-2.8

^a Average annual percentage change based on the exponential trend for the last five 12-month periods

Percentage change in fatal crashes in each State



† Percentage change between the two 12-month periods ending September 2010 and September 2009.



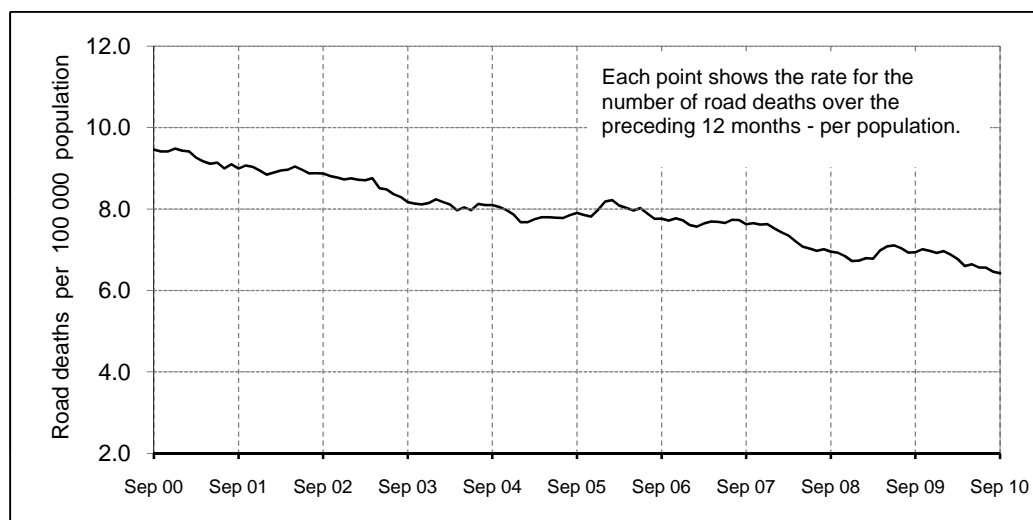
‡ Average annual percentage change based on the exponential trend from the year ending September 2005 to year ending September 2010.

ROAD DEATH RATES

Road deaths per 100,000 population

	NSW	Vic	Qld	SA	WA	Tas	NT	ACT	Australia
12-months to date									
Oct 2009 - Sep 2010	6.0	5.6	5.5	6.7	8.6	6.7	20.1	5.6	6.3
Oct 2008 - Sep 2009	6.3	5.2	7.9	7.4	8.2	12.3	17.8	3.1	6.8
Calendar year									
2009	6.4	5.3	7.5	7.3	8.5	12.7	13.7	3.4	6.8
2004	7.6	6.9	8.0	9.0	9.0	12.0	17.3	2.7	7.9

Australian road deaths per year per 100 000 population - moving 12-monthly data



CHARACTERISTICS OF FATAL CRASHES

Proportion (per cent) of fatal crashes by speed limit, crash type, time of day, and day of week.
Two years ended September 2010 and two years ended September 2005

	Speed limit (km/h) ^a			Time of Day	
	Up to 60	65-95	100+	Day	Night ^b
Oct 2008 - Sep 2010	30.7%	23.1%	46.2%	57.9%	42.1%
Oct 2003 - Sep 2005	31.7%	22.4%	45.9%	54.8%	45.2%
	Crash Type			Day of week	
	Pedestrian crash	Other single veh. Crash	Other multiple veh. crash	Week day	Week-end ^c
Oct 2008 - Sep 2010	14.1%	46.7%	39.2%	60.5%	39.5%
Oct 2003 - Sep 2005	15.2%	44.4%	40.4%	58.3%	41.7%

a Excludes ACT

b 6:00 pm to 5:59 am

c 6:00 pm Friday to 5:59 am Monday

ROAD DEATHS BY AGE, GENDER AND ROAD USER GROUP

Road deaths by age and gender
for 12 months ended September 2010 and September 2009

	0-16 years	17-25 years	26-39 years	40-59 years	60+ years	All deaths ^a
Males						
Oct 2009 - Sep 2010	50	252	244	274	180	1,005
Oct 2008 - Sep 2009	57	299	292	274	180	1,102
% change	-12.3%	-15.7%	-16.4%	0.0%	0.0%	-8.8%
Females						
Oct 2009 - Sep 2010	33	63	78	97	110	383
Oct 2008 - Sep 2009	42	90	64	100	92	388
% change	-21.4%	-30.0%	21.9%	-3.0%	19.6%	-1.3%
Persons^b						
Oct 2009 - Sep 2010	86	315	322	371	290	1,392
Oct 2008 - Sep 2009	101	389	356	374	272	1,492
% change	-14.9%	-19.0%	-9.6%	-0.8%	6.6%	-6.7%

a Includes road users with unstated age

b Includes road users with unstated gender

Road deaths by age for each main road user group

	0-16 years	17-25 years	26-39 years	40-59 years	60+ years	All deaths ^a
Occupants^b						
Oct 2009 - Sep 2010	67	240	222	220	207	963
Oct 2008 - Sep 2009	76	304	215	232	185	1,012
% change	-11.8%	-21.1%	3.3%	-5.2%	11.9%	-4.8%
Motorcyclists^c						
Oct 2009 - Sep 2010	3	42	64	96	9	214
Oct 2008 - Sep 2009	3	50	89	85	13	240
% change	0.0%	-16.0%	-28.1%	12.9%	-30.8%	-10.8%
Pedestrians						
Oct 2009 - Sep 2010	16	28	30	39	59	173
Oct 2008 - Sep 2009	18	33	44	46	64	205
% change	-11.1%	-15.2%	-31.8%	-15.2%	-7.8%	-15.6%

a Includes road users with unstated age

b Comprises drivers and passengers

c Includes pillion passengers

TIME SERIES - QUARTERLY SUPPLEMENT

Road deaths by road user group, 1995 to 2009

	<i>Drivers</i>	<i>Passengers</i>	<i>Pedestrians</i>	<i>Motor-cyclists^a</i>	<i>Cyclists</i>	<i>All road users^b</i>
1995	874	491	398	204	48	2,017
1996	869	499	351	193	57	1,970
1997	776	431	328	177	52	1,767
1998	741	468	318	181	44	1,755
1999	820	428	299	176	40	1,764
2000	852	450	287	191	31	1,817
2001	776	407	290	216	46	1,737
2002	785	422	249	224	34	1,715
2003	747	420	232	188	26	1,621
2004	760	362	220	195	43	1,583
2005	775	347	226	233	41	1,627
2006	757	336	229	238	39	1,599
2007	785	336	204	237	41	1,603
2008	671	302	189	245	28	1,437
2009	710	330	195	224	31	1,492

a Includes pillion passengers

b Includes road users not separately specified

Road deaths by State/Territory, 1995 to 2009

	<i>NSW</i>	<i>Vic</i>	<i>Qld</i>	<i>SA</i>	<i>WA</i>	<i>Tas</i>	<i>NT</i>	<i>ACT</i>	<i>Australia</i>
1995	620	418	456	181	209	57	61	15	2,017
1996	581	417	385	181	247	64	72	23	1,970
1997	576	377	360	148	197	32	60	17	1,767
1998	556	390	279	168	223	48	69	22	1,755
1999	577	383	314	151	218	53	49	19	1,764
2000	603	407	317	166	212	43	51	18	1,817
2001	524	444	324	153	165	61	50	16	1,737
2002	561	397	322	154	179	37	55	10	1,715
2003	539	330	310	157	180	41	53	11	1,621
2004	510	343	311	139	178	58	35	9	1,583
2005	508	346	330	148	163	51	55	26	1,627
2006	496	337	335	117	200	55	46	13	1,599
2007	435	332	360	124	235	45	58	14	1,603
2008	374	303	328	99	205	39	75	14	1,437
2009	454	290	331	119	190	64	31	12	1,492

DEATH RATES - QUARTERLY SUPPLEMENT

Road death – Rates by State/Territory

	<i>NSW</i>	<i>Vic</i>	<i>Qld</i>	<i>SA</i>	<i>WA</i>	<i>Tas</i>	<i>NT</i>	<i>ACT</i>	<i>Australia</i>
Per capita ^a									
2009	6.38	5.33	7.48	7.33	8.46	12.72	13.72	3.41	6.80
2004	7.60	6.89	7.97	9.02	8.98	12.01	17.32	2.75	7.86
Per registered vehicle ^b									
2009	0.99	0.72	1.01	0.98	1.04	1.60	2.41	0.49	0.98
2004	1.26	0.96	1.17	1.27	1.20	1.66	3.30	0.42	1.17

a Annual deaths per 100,000 population: 2008 at June 30 (preliminary data); 2003 at June 30 (revised data) taken from ABS catalogue 3201.0

b Annual deaths per 10,000 registered motor vehicles at 31 March taken from ABS catalogue 9309.0.

DEATHS BY AGE AND ROAD USER GROUP - QUARTERLY SUPPLEMENT

Road deaths by road user group and age
for 12 months ended September 2010, September 2009 and five year trend

	0-16 years	17-20 years	21-25 years	26-39 years	40-59 years	60+ years	All deaths ^d
Drivers							
Oct 2009 - Sep 2010	8	85	78	169	191	143	676
Oct 2008 - Sep 2009	7	94	90	174	192	130	687
% change	14.3	-9.6	-13.3	-2.9	-0.5	10.0	-1.6
Ave annual % change ^a YE Sep 2005 to YE Sep 2010	13.7	-4.1	-7.0	-4.7	0.5	-2.5	-3.0
Passengers							
Oct 2009 - Sep 2010	59	50	27	53	29	64	287
Oct 2008 - Sep 2009	69	65	55	41	40	55	325
% change	-14.5	-23.1	-50.9	29.3	-27.5	16.4	-11.7
Ave annual % change ^a YE Sep 2005 to YE Sep 2010	-1.4	-3.8	-5.6	1.5	-10.8	-0.7	-3.1
Pedestrians							
Oct 2009 - Sep 2010	16	16	12	30	39	59	173
Oct 2008 - Sep 2009	18	20	13	44	46	64	205
% change	-11.1	-20.0	-7.7	-31.8	-15.2	-7.8	-15.6
Ave annual % change ^a YE Sep 2005 to YE Sep 2010	-6.9	0.8	-6.4	-4.8	-0.7	-7.5	-5.0
Motorcyclists^b							
Oct 2009 - Sep 2010	3	16	26	64	96	9	214
Oct 2008 - Sep 2009	3	21	29	89	85	13	240
% change	0.0	-23.8	-10.3	-28.1	12.9	-30.8	-10.8
Ave annual % change ^a YE Sep 2005 to YE Sep 2010	-16.7	-3.2	-10.2	-4.0	11.0	-1.0	-0.2
Cyclists							
Oct 2009 - Sep 2010	0	1	3	6	16	14	40
Oct 2008 - Sep 2009	4	1	1	8	10	9	33
All road users^c							
Oct 2009 - Sep 2010	86	169	146	322	371	290	1,392
Oct 2008 - Sep 2009	101	201	188	356	374	272	1,492
% change	-14.9	-15.9	-22.3	-9.6	-0.8	6.6	-6.7
Ave annual % change ^a YE Sep 2005 to YE Sep 2010	-4.3	-3.6	-7.0	-3.7	1.2	-3.0	-2.8

^a This represents the average annual exponential change between the annual count of 5-years ago and the current annual count

^b Includes pillion passengers

^c Includes road users not separately classified

^d Includes deaths with unstated age

DEATHS BY STATE / TERRITORY AND ROAD USER

Road deaths by road user group and State/Territory
for 12 months ended September 2010, September 2009 and five year trend

	NSW	Vic	Qld	SA	WA	Tas	NT	ACT	Australia
Drivers									
Oct 2009 - Sep 2010	202	151	119	54	101	17	23	9	676
Oct 2008 - Sep 2009	214	131	152	58	82	27	18	5	687
% change	-5.6	15.3	-21.7	-6.9	23.2	-37.0	27.8	-	-1.6
Ave annual % change ^a									
Sep 2005 to Sep 2010	-3.0	-3.9	-1.1	-5.7	2.0	-2.1	3.2	0.4	-2.3
Passengers									
Oct 2009 - Sep 2010	92	53	52	26	41	8	13	2	287
Oct 2008 - Sep 2009	89	54	76	34	39	20	9	4	325
% change	3.4	-1.9	-31.6	-23.5	5.1	-60.0	44.4	-	-11.7
Ave annual % change ^a									
Sep 2005 to Sep 2010	-4.4	-9.4	-1.0	-1.1	-2.0	0.4	-1.6	-	-3.3
Pedestrians									
Oct 2009 - Sep 2010	63	43	25	9	22	4	6	1	173
Oct 2008 - Sep 2009	60	54	44	12	21	4	9	1	205
% change	5.0	-20.4	-43.2	-25.0	4.8	0.0	-33.3	-	-15.6
Ave annual % change ^a									
Sep 2005 to Sep 2010	-7.5	1.3	0.6	-5.4	0.9	-0.8	6.6	-4.3	-2.0
Motorcyclists ^b									
Oct 2009 - Sep 2010	64	49	42	16	29	4	4	6	214
Oct 2008 - Sep 2009	70	37	68	15	37	9	3	1	240
% change	-8.6	32.4	-38.2	6.7	-21.6	-55.6	33.3	500.0	-10.8
Ave annual % change ^a									
Sep 2005 to Sep 2010	1.0	-1.5	0.4	-2.3	10.7	1.2	-	-8.1	1.3
Cyclists									
Oct 2009 - Sep 2010	11	10	9	5	2	1	0	2	40
Oct 2008 - Sep 2009	14	7	7	1	2	2	0	0	33
All road users ^c									
Oct 2009 - Sep 2010	432	307	247	110	196	34	46	20	1,392
Oct 2008 - Sep 2009	448	283	347	120	181	62	40	11	1,492
% change	-3.6	8.5	-28.8	-8.3	8.3	-45.2	15.0	81.8	-6.7
Ave annual % change ^a									
Sep 2005 to Sep 2010	-3.9	-2.7	-3.8	-4.3	1.9	-5.1	-1.5	-2.9	-2.8

^a This represents the average annual exponential change between the annual count of 5-years ago and the current annual count

^b Includes pillion passengers

^c Includes road users not separately classified

Appendix

1. Definition

The road safety agencies in each jurisdiction use detailed criteria to define road crashes and road deaths. Briefly, a death is classified as resulting from a road crash if the crash occurred on a public road, is unintentional and the death occurred within 30 days from injuries sustained in the crash.

Road deaths from recent months are preliminary and subject to revision.

2. Other sources for the tables in this bulletin

The underlying database used to produce this bulletin is available for online querying and data extraction at

http://www.infrastructure.gov.au/roads/safety/road_fatality_statistics/fatal_road_crash_database.aspx

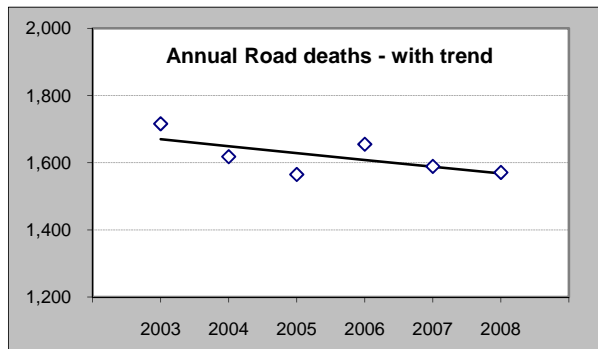
3. Estimation of five year trends

In this bulletin, the figures for the 'Average annual per cent change over 5 years' are calculated by fitting an exponential trend line to the last six data points (years 0 to 5).

The Excel function `—logest—` performs the fit. The resulting trend line represents a constant annual percent change over the period. An example is given below :

Example : Average Annual Change in Road Deaths

Road deaths - year ended March			% Change
	A	B	
0	2003	1,716	
1	2004	1,618	-5.7%
2	2005	1,565	-3.3%
3	2006	1,655	5.8%
4	2007	1,589	-4.0%
5	2008	1,571	-1.1%
Average =			-1.2%



Average annual growth = $\text{Index}(\text{Logest}(B1:B6, A1:A6), 1) - 1 = -1.2\%$