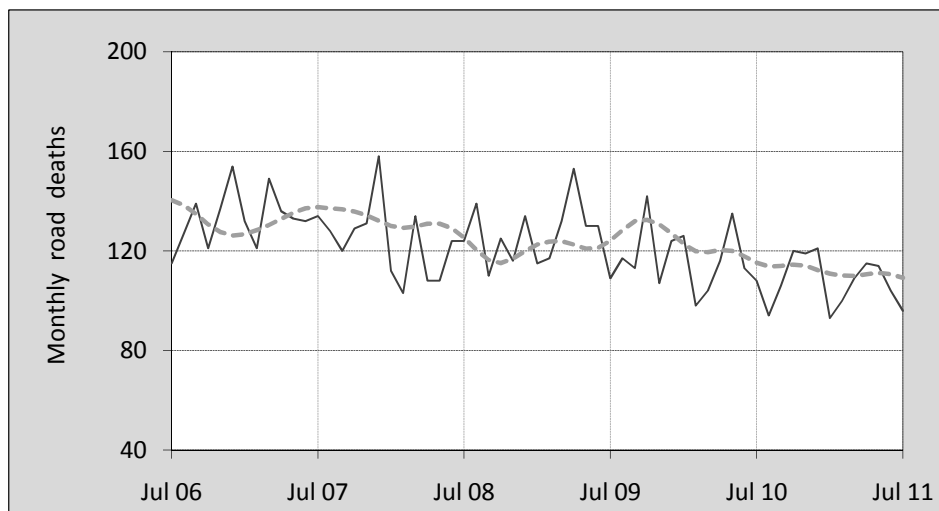




This month's key figures

- There was a total of 96 road deaths in July 2011. Compared to the average for the month of July over the last five years, this is an 18.6 per cent decrease.
- During the 12 months ended July 2011 there were 1,291 deaths. This is an 8.0 per cent decrease from the 12-monthly period ending July 2010.
- The rate of annual deaths per population presently stands at 5.8. This is an 8.5 per cent decrease from the 12-monthly period ending July 2010.

Monthly Australian road deaths — last five years, with trend



Data Sources

Data are obtained from

- Roads and Traffic Authority, NSW
- Vicroads
- Department of Transport and Main Roads, Queensland
- Department for Transport, Energy and Infrastructure, S.A.
- Western Australia Police
- Department of Infrastructure, Energy and Resources, Tasmania
- Department of Lands and Planning, Northern Territory
- Department of Territory and Municipal Services, ACT
- Australian Bureau of Statistics (3101.0)

Inquiries

For further information about data in this bulletin, contact:

Bureau of Infrastructure, Transport and
Regional Economics
Web : www.bitre.gov.au
Email : roadsafety@infrastructure.gov.au

Road deaths from recent months are preliminary and subject to revision.

© Copyright. Commonwealth of Australia

I. Current month and year to date

Deaths by jurisdiction

Current month	NSW	Vic	Qld	SA	WA	Tas	NT	ACT	Australia
July 2010	24	26	23	7	14	2	10	2	108
July 2011	28	24	25	7	4	0	8	0	96
Per cent change	16.7	-7.7	8.7	0.0	-71.4	-100.0	-20.0	-100.0	-11.1

Year to date	NSW	Vic	Qld	SA	WA	Tas	NT	ACT	Australia
January 2010 - July 2010	242	177	142	76	100	19	27	17	800
January 2011 - July 2011	198	180	146	69	94	18	19	7	731
Latest per cent change	-18.2	1.7	2.8	-9.2	-6.0	-5.3	-29.6	-58.8	-8.6

2. Yearly deaths — last five 12 monthly periods

Deaths by jurisdiction

12 months ended July	NSW	Vic	Qld	SA	WA	Tas	NT	ACT	Australia
2007	449	340	370	103	225	59	51	18	1,615
2008	369	329	334	108	216	39	70	14	1,479
2009	425	293	351	125	191	60	52	13	1,510
2010	444	295	260	120	189	32	42	21	1,403
2011	369	291	253	111	187	30	41	9	1,291
Latest per cent change	-16.9	-1.4	-2.7	-7.5	-1.1	-6.3	-2.4	-57.1	-8.0
Average change per year (per cent)	-2.1	-4.1	-9.6	2.6	-4.9	-14.4	-9.0	-9.3	-4.9

Deaths by road user

12 months ended July	Driver	Passenger	Pedestrian	Motorcyclist	Cyclist	Total ^a
2007	786	326	216	245	42	1,615
2008	723	310	181	239	25	1,479
2009	680	339	206	248	36	1,510
2010	669	292	182	222	36	1,403
2011	612	264	173	204	35	1,291
latest per cent change	-8.5	-9.6	-4.9	-8.1	-2.8	-8.0
Average change per year (per cent)	-5.6	-4.7	-4.3	-4.3	0.0	-4.9

^a Includes deaths of unknown road user type

Deaths by age-group (years)

12 months ended July	<i>0 to 16</i>	<i>17 to 25</i>	<i>26 to 39</i>	<i>40 to 59</i>	<i>60 to 69</i>	<i>≥ 70</i>	<i>Total^a</i>
2007	115	400	414	379	119	188	1,615
2008	85	387	357	373	78	198	1,479
2009	99	394	370	368	107	172	1,510
2010	83	307	320	388	119	185	1,403
2011	73	322	272	347	105	167	1,291
<i>latest per cent change</i>	-12.0	4.9	-15.0	-10.6	-11.8	-9.7	-8.0
<i>Average change per year (per cent)</i>	-8.9	-6.4	-9.1	-1.4	1.7	-3.0	-4.9

a Includes deaths to persons with age not recorded.

Deaths by gender

12 months ended July	<i>Males</i>	<i>Females</i>	<i>Total^b</i>
2007	1,190	424	1,615
2008	1,103	375	1,479
2009	1,091	417	1,510
2010	1,017	383	1,403
2011	938	349	1,291
<i>latest per cent change</i>	-7.8	-8.9	-8.0
<i>Average change per year (per cent)</i>	-5.4	-3.6	-4.9

b Includes deaths to persons with gender not recorded.

3. Annual deaths per 100 000 population

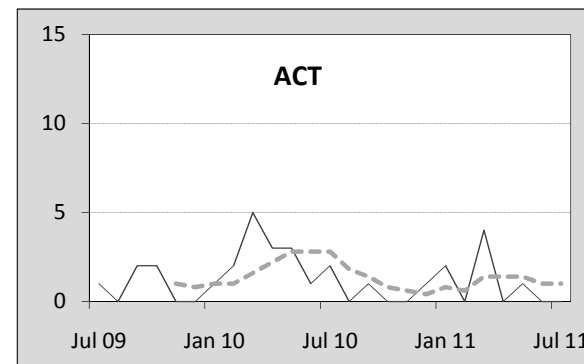
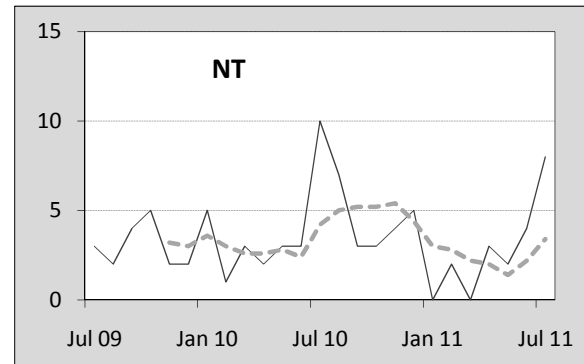
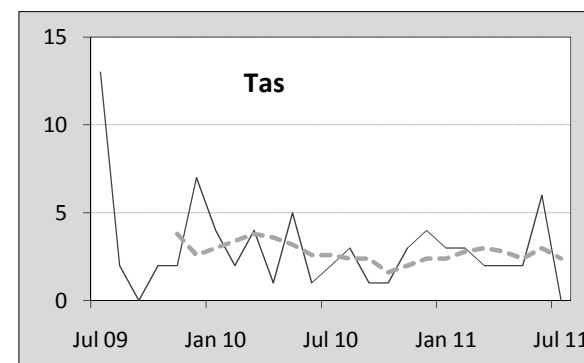
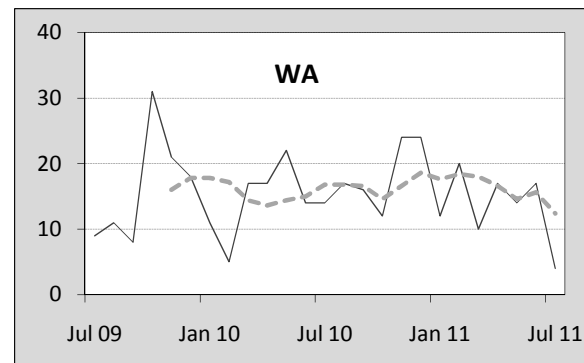
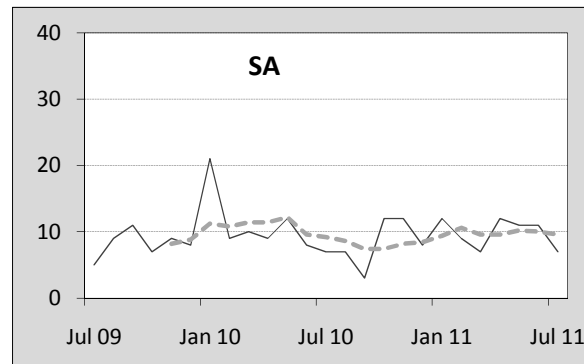
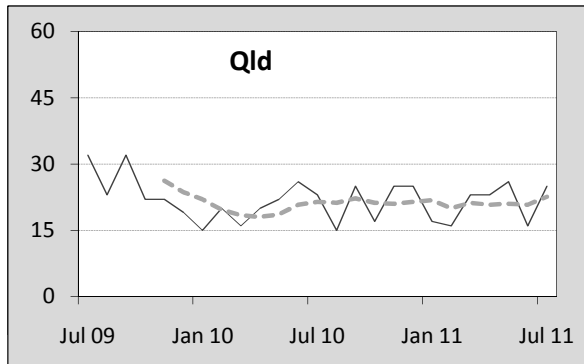
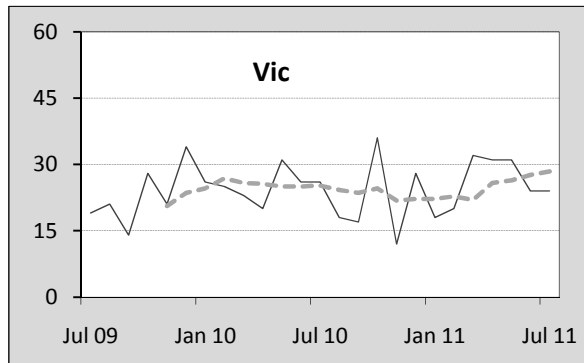
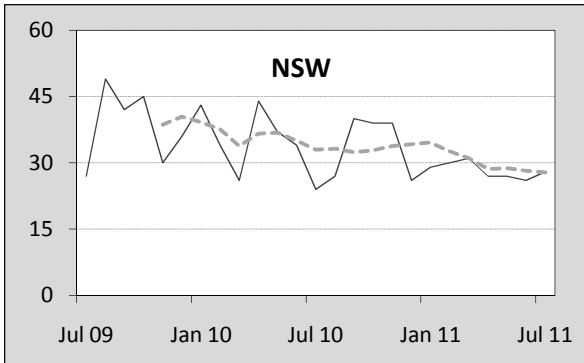
By jurisdiction

12 months ended July	<i>NSW</i>	<i>Vic</i>	<i>Qld</i>	<i>SA</i>	<i>WA</i>	<i>Tas</i>	<i>NT</i>	<i>ACT</i>	<i>Australia</i>
2007	6.54	6.56	8.92	6.53	10.76	11.99	23.97	5.33	7.72
2008	5.30	6.23	7.84	6.77	10.06	7.86	32.13	4.08	6.94
2009	6.00	5.43	8.02	7.74	8.60	11.97	23.28	3.72	6.94
2010	6.17	5.35	5.80	7.33	8.31	6.32	18.41	5.90	6.32
2011	5.11	5.26	5.57	6.74	8.16	5.90	17.80	2.52	5.78
<i>latest per cent change</i>	-17.1	-1.7	-4.0	-8.1	-1.9	-6.7	-3.3	-57.3	-8.5

Calendar year	<i>NSW</i>	<i>Vic</i>	<i>Qld</i>	<i>SA</i>	<i>WA</i>	<i>Tas</i>	<i>NT</i>	<i>ACT</i>	<i>Australia</i>
2006	7.28	6.57	8.19	7.46	9.71	11.23	21.84	3.89	7.73
2007	6.30	6.36	8.58	7.82	11.12	9.12	27.00	4.10	7.61
2008	5.33	5.69	7.61	6.17	9.42	7.83	34.01	4.04	6.68
2009	6.36	5.32	7.48	7.33	8.47	12.52	13.70	3.41	6.78
2010	5.71	5.19	5.52	7.18	8.42	6.11	21.33	5.30	6.09
<i>latest per cent change</i>	-10.2	-2.5	-26.3	-2.1	-0.6	-51.2	55.7	55.6	-10.2

Monthly deaths by jurisdiction — last 24 months

— raw
 - - - smoothed (unweighted 5-point moving average)



5. Characteristics of fatal crashes

12 months ended July	Crash type ^a			Posted speed limit				Total ^b
	Single	Multiple	Pedestrian	0 to 60	70 to 90	100	≥ 110	
2007	702	566	215	467	312	488	177	1,483
2008	636	525	180	381	308	466	148	1,341
2009	649	510	204	439	326	410	160	1,363
2010	587	518	177	369	267	447	169	1,282
2011	531	482	171	311	256	381	159	1,184

12 months ended July	Day of week ^c		Time of Day ^d	
	Weekday	Weekend	Day	Night
2007	846	615	827	656
2008	795	528	755	586
2009	835	517	767	596
2010	753	512	756	526
2011	708	458	697	487

a 'Single' and 'Multiple' refer to the the number of vehicles involved in a fatal crash where there is no pedestrian killed.

b Includes crashes where speed limit is unknown

c 'Weekday' refers to 6am Monday through to 5:59pm Friday.

d 'Day' refers to 6am through to 5:59 pm.

Appendix

Definition

The road safety agencies in each jurisdiction use detailed criteria to define road crashes and road deaths. Briefly, a death is classified as resulting from a road crash if the crash occurred on a public road, is unintentional and the death occurred within 30 days from injuries sustained in the crash.

Population rates

Rates per population are based on the deaths to the current 12 monthly period, and the population at the midpoint of the period. The population at midpoints are interpolated if necessary.

Average (%) change per year

Calculated by fitting an exponential curve through the five data points, and quoting the constant (annual) change of this curve.

Other sources for the tables in this bulletin

The underlying database used to produce this bulletin — *the Australian Road Deaths Database* is available for online querying and data extraction at <http://www.bitre.gov.au/info.aspx?NodId=167>

Road deaths from recent months are preliminary and subject to revision.