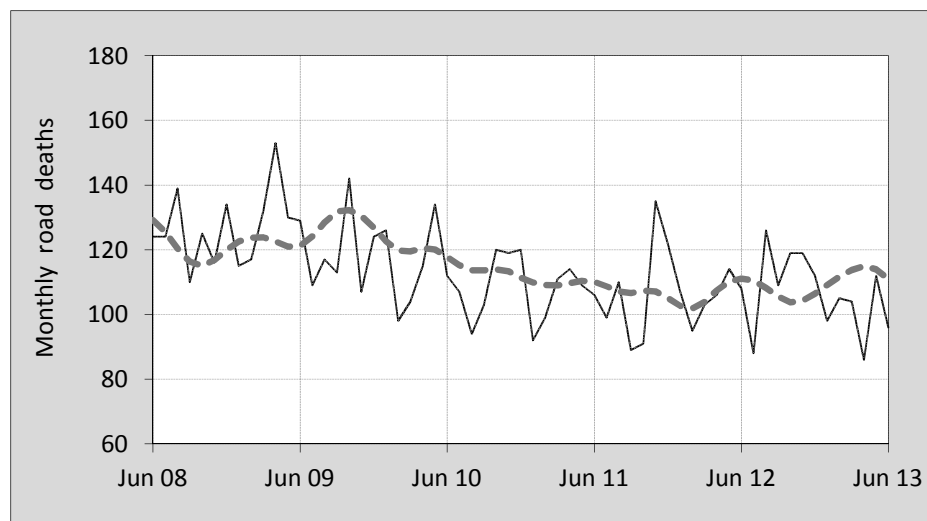




This month's key figures

- There was a total of 96 road deaths in June 2013. In comparison to the average for June over the previous five years, the current figure is 17.1 per cent lower.
- During the 12 months ended June there were 1,274 road deaths. This is a 0.4 per cent decrease over the total for the 12-monthly period ending June 2012.
- Presently the rate of annual deaths per 100,000 population stands at 5.6. This is a 2.1 per cent decrease over the figure for the 12-monthly period ending June 2012.

Monthly Australian road deaths — last five years, with trend



Data Sources

Data are obtained from

- Transport for NSW
- Vicroads
- Department of Transport and Main Roads, Queensland
- Department for Transport, Energy and Infrastructure, S.A.
- Western Australia Police
- Department of Infrastructure, Energy and Resources, Tasmania
- Department of Lands and Planning, Northern Territory
- Department of Territory and Municipal Services, ACT
- Australian Bureau of Statistics (3101.0)

Inquiries

For further information about data in this bulletin, contact:

Bureau of Infrastructure, Transport and Regional Economics

Web : www.bitre.gov.au

Email : roadsafety@infrastructure.gov.au

Road deaths from recent months are preliminary and subject to revision.

© Copyright. Commonwealth of Australia

I. Current month and year to date

Deaths by jurisdiction

Current month	NSW	Vic	Qld	SA	WA	Tas	NT	ACT	Australia
June 2012	34	22	17	7	18	2	6	2	108
June 2013	33	15	17	13	12	2	4	0	96
Per cent change	-2.9	-31.8	0.0	85.7	-33.3	0.0	-33.3	-100.0	-11.1

Year to date	NSW	Vic	Qld	SA	WA	Tas	NT	ACT	Australia
January 2012 - June 2012	188	139	130	48	92	12	19	5	633
January 2013 - June 2013	165	114	147	56	87	13	16	3	601
Per cent change	-12.2	-18.0	13.1	16.7	-5.4	8.3	-15.8	-40.0	-5.1

2. Yearly deaths — last five 12 monthly periods

Deaths by jurisdiction

12 months ended June	NSW	Vic	Qld	SA	WA	Tas	NT	ACT	Australia
2009	432	301	351	128	195	49	55	13	1,524
2010	445	288	269	118	183	43	35	20	1,401
2011	355	294	251	111	199	31	43	10	1,294
2012	386	269	278	89	181	19	52	5	1,279
2013	349	257	297	102	180	34	45	10	1,274
Latest per cent change	-9.6	-4.5	6.8	14.6	-0.6	78.9	-13.5	100.0	-0.4
Average trend change per year (per cent)	-5.5	-3.8	-3.0	-7.1	-1.7	-14.3	-0.1	-17.4	-4.4

Deaths by road user

12 months ended June	Driver	Passenger	Pedestrian	Motorcyclist	Cyclist	Total ^a
2009	688	338	206	257	33	1,524
2010	675	290	176	220	38	1,401
2011	602	275	173	211	33	1,294
2012	561	272	194	219	31	1,279
2013	636	243	149	200	38	1,274
Latest per cent change	13.4	-10.7	-23.2	-8.7	22.6	-0.4
Average trend change per year (per cent)	-3.4	-7.0	-5.4	-4.9	0.8	-4.4

a Includes deaths where road user type is unknown

Deaths by age-group (years)

12 months ended June	0 to 16	17 to 25	26 to 39	40 to 59	60 to 69	≥ 70	Total ^b
2009	93	408	373	368	109	173	1,524
2010	87	302	319	397	115	180	1,401
2011	70	324	279	345	104	172	1,294
2012	94	271	318	291	110	195	1,279
2013	69	275	264	321	152	190	1,274
Latest per cent change	-26.6	1.5	-17.0	10.3	38.2	-2.6	-0.4
Average trend change per year (per cent)	-5.1	-8.6	-6.7	-5.7	6.4	2.7	-4.4

b Includes deaths to persons with age not recorded.

Deaths by gender

12 months ended June	Males	Females	Total ^c
2009	1,095	427	1,524
2010	1,023	375	1,401
2011	949	344	1,294
2012	911	367	1,279
2013	910	363	1,274
Latest per cent change	-0.1	-1.1	-0.4
Average trend change	-4.7	-3.4	-4.4

c Includes deaths to persons with gender not recorded.

3. Annual deaths per 100,000 population

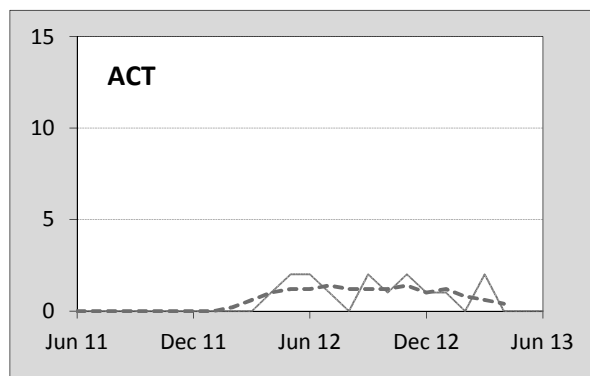
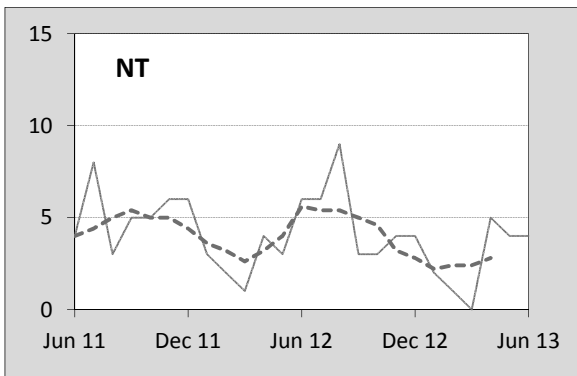
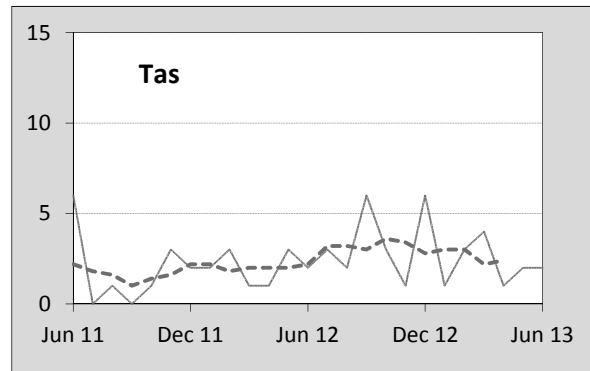
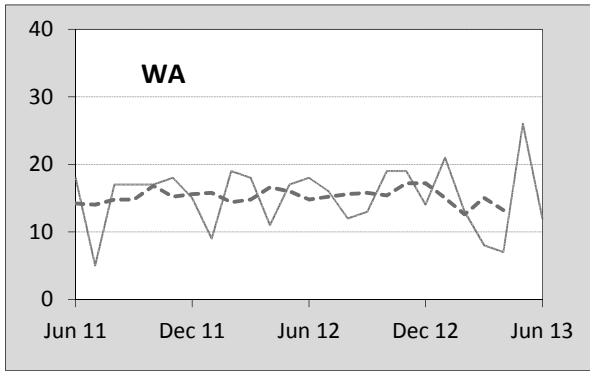
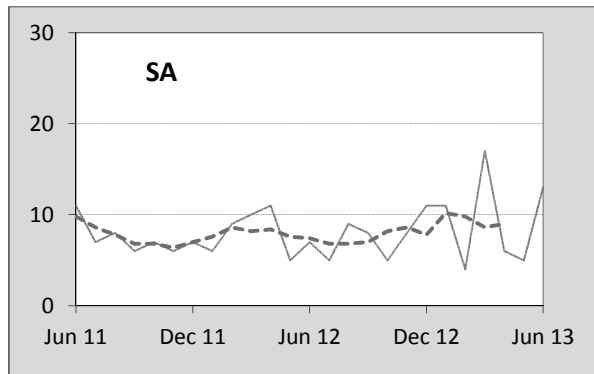
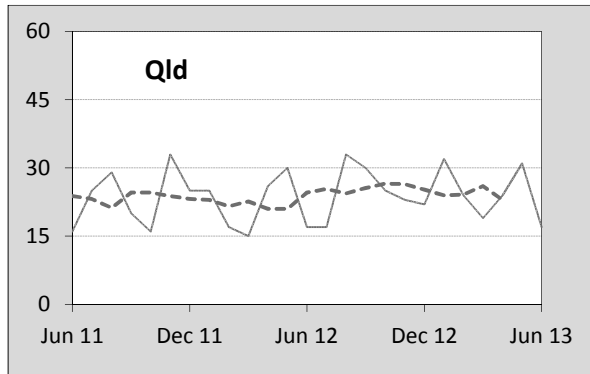
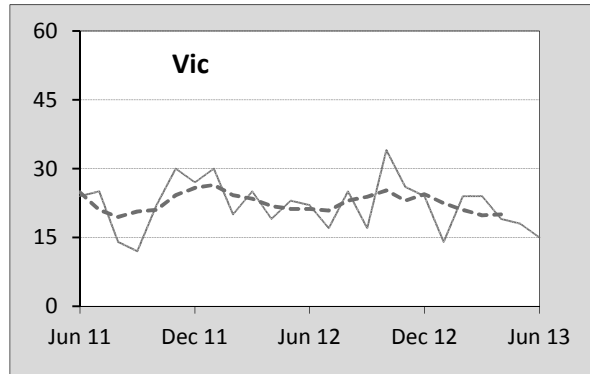
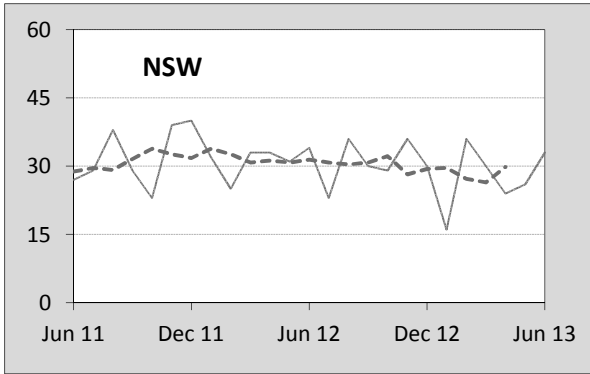
By jurisdiction

12 months ended June	NSW	Vic	Qld	SA	WA	Tas	NT	ACT	Australia
2009	6.17	5.67	8.21	8.01	8.83	9.77	24.72	3.70	7.10
2010	6.27	5.31	6.16	7.29	8.08	8.49	15.37	5.59	6.41
2011	4.94	5.35	5.66	6.80	8.58	6.08	18.67	2.74	5.84
2012	5.32	4.82	6.15	5.41	7.57	3.71	22.35	1.35	5.68
2013	4.75	4.52	6.44	6.14	7.28	6.64	19.00	2.63	5.56
Latest per cent change	-10.7	-6.1	4.7	13.5	-3.9	78.8	-15.0	95.5	-2.1
Average trend change per year (per cent)	-6.6	-5.3	-4.7	-8.0	-4.4	-14.8	-1.5	-19.0	-5.9

Calendar year	NSW	Vic	Qld	SA	WA	Tas	NT	ACT	Australia
2008	5.39	5.76	7.77	6.23	9.44	7.82	34.11	4.02	6.76
2009	6.42	5.40	7.65	7.40	8.48	12.49	13.27	3.38	6.86
2010	5.67	5.27	5.65	7.25	8.42	6.09	21.32	5.25	6.14
2011	5.04	5.18	6.01	6.28	7.65	4.69	19.02	1.63	5.72
2012	5.10	5.01	6.13	5.68	7.60	6.44	20.41	3.20	5.75
Latest per cent change	1.0	-3.3	2.1	-9.7	-0.6	37.3	7.3	96.3	0.6

4. Monthly deaths by jurisdiction — last 24 months

— raw
 - - - smoothed (unweighted 5-point moving average)



5. Fatal crashes: counts and characteristics

12 months ended June	Crash type ^d			Posted speed limit				Total ^e
	Single	Multiple	Pedestrian	0 to 60	70 to 90	100	≥ 110	
2009	658	516	205	446	330	414	160	1,379
2010	584	519	170	370	267	442	166	1,273
2011	537	482	171	326	270	408	167	1,190
2012	501	475	190	395	257	371	128	1,166
2013	550	463	148	362	263	362	145	1,161
<i>Average trend change per year (per cent)</i>	-5.0	-3.0	-5.3	-3.5	-4.8	-4.3	-4.5	-4.2

12 months ended June	Day of week ^f		Time of Day ^g	
	Weekday	Weekend	Day	Night
2009	833	535	778	601
2010	767	491	751	522
2011	692	477	705	485
2012	709	444	735	431
2013	709	438	725	436
<i>Average trend change per year (per cent)</i>	-3.9	-4.9	-1.6	-8.0

d 'Single' and 'Multiple' refer to the the number of vehicles involved in a fatal crash where there is no pedestrian killed.

e Includes crashes where speed limit is unknown

f 'Weekday' refers to 6am Monday through to 5:59pm Friday.

g 'Day' refers to 6am through to 5:59 pm.

Appendix

Definition

The road safety agencies in each jurisdiction use detailed criteria to define road crashes and road deaths. Briefly, a death is classified as resulting from a road crash if the crash occurred on a public road, is unintentional and the death occurred within 30 days from injuries sustained in the crash.

Population rates

Rates per population are based on the deaths to the current 12 monthly period, and the population at the midpoint of the period. The population at midpoints are interpolated if necessary.

Average trend change (% per year)

Calculated by fitting an exponential curve through the five data points, and quoting the constant (annual) change of this curve.

Other sources for the tables in this bulletin

The underlying database used to produce this bulletin — the Australian Road Deaths Database is available for online querying and data extraction at

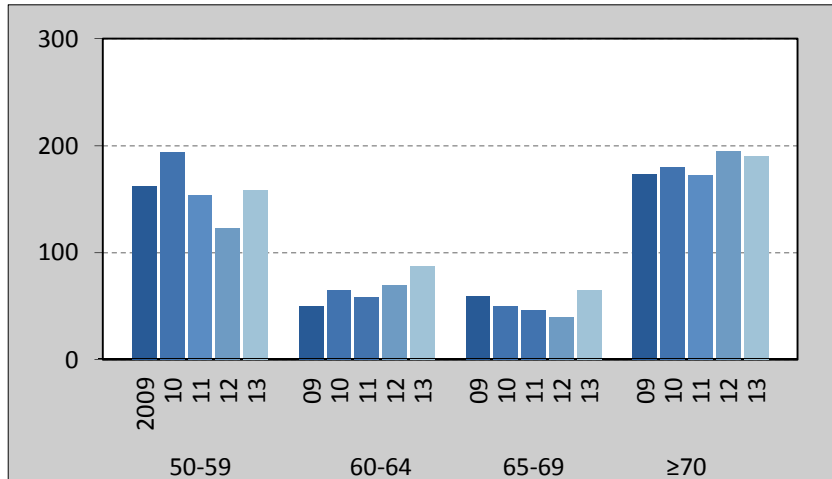
< http://www.bitre.gov.au/statistics/safety/fatal_road_crash_database.aspx >

Road deaths from recent months are preliminary and subject to revision.

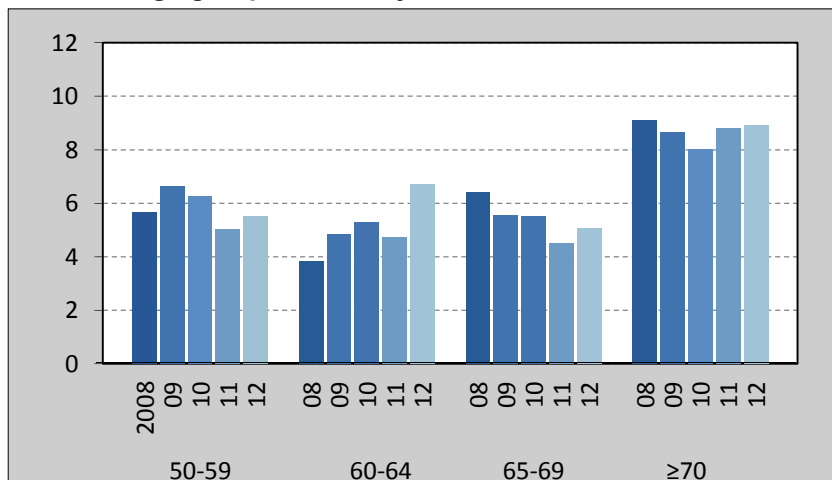
6. Supplementary data — Older age groups

In this month's supplementary analysis, deaths within older age groups are compared with other adult ages.

..... Annual deaths by age group, year ending June



..... Rate of annual deaths per 100,000 population by age group, calendar year



Rate of annual deaths per 100,000 population by single year of age (smoothed) 2002 and 2012

