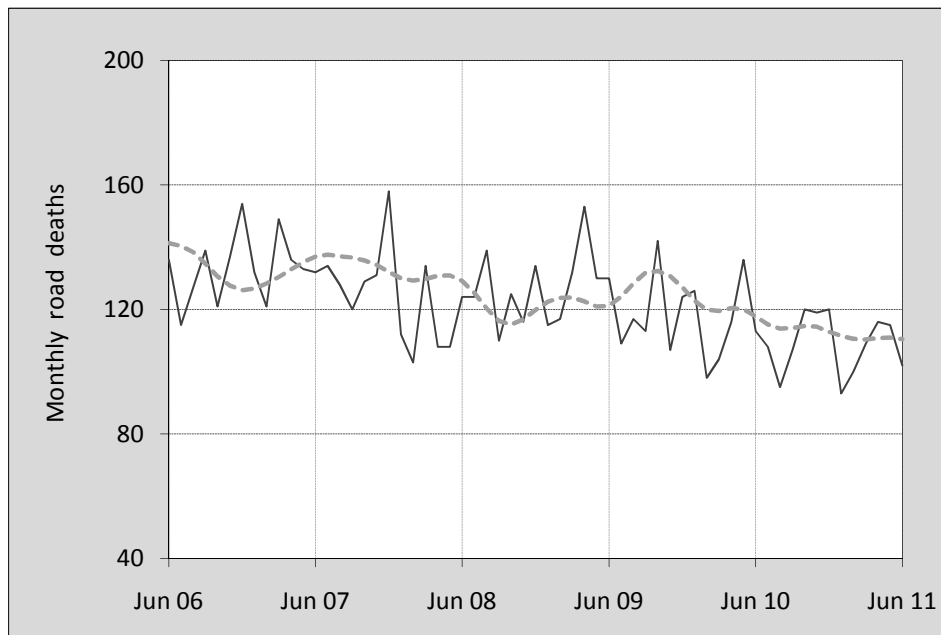




## This month's key figures

- There was a total of 102 road deaths in June 2011. Compared to the average for the month of June over the last five years, this is a 19.7 per cent decrease.
- During the 12 months ended June 2011 there were 1,304 deaths. This is a 7.2 per cent decrease from the 12-monthly period ending June 2010.
- The rate of annual deaths per population presently stands at 5.8. This is a 8.5 per cent decrease from the 12-monthly period ending June 2010.

## Monthly Australian road deaths — last five years, with trend



### Data Sources

Data are obtained from

- Roads and Traffic Authority, NSW
- Vicroads
- Department of Transport and Main Roads, Queensland
- Department for Transport, Energy and Infrastructure, S.A.
- Western Australia Police
- Department of Infrastructure, Energy and Resources, Tasmania
- Department of Lands and Planning, Northern Territory
- Department of Territory and Municipal Services, ACT
- Australian Bureau of Statistics (3101.0)

### Inquiries

For further information about data in this bulletin, contact:

Bureau of Infrastructure, Transport and  
Regional Economics  
Web : < [www.bitre.gov.au](http://www.bitre.gov.au) >  
Email : [roadsafety@infrastructure.gov.au](mailto:roadsafety@infrastructure.gov.au)

Road deaths from recent months are preliminary and subject to revision.

© Copyright Commonwealth of Australia

## I. Current month and year to date

### Deaths by jurisdiction

Current month	NSW	Vic	Qld	SA	WA	Tas	NT	ACT	Australia
June 2011	25	23	16	11	17	6	4	0	102
June 2010	34	26	26	8	14	1	3	1	113
Per cent change	-26.5	-11.5	-38.5	37.5	21.4	500.0	33.3	-100.0	-9.7

Year to date	NSW	Vic	Qld	SA	WA	Tas	NT	ACT	Australia
Jan 2011 to Jun 2011	170	157	120	62	90	18	11	7	635
Jan 2010 to Jun 2010	219	151	119	69	86	17	17	15	693
Per cent change	-22.4	4.0	0.8	-10.1	4.7	5.9	-35.3	-53.3	-8.4

## 2. Yearly deaths — last five 12 monthly periods

### Deaths by jurisdiction

12 months ended June	NSW	Vic	Qld	SA	WA	Tas	NT	ACT	Australia
2007	442	337	366	104	223	56	51	17	1,596
2008	376	330	331	107	221	41	69	14	1,489
2009	432	301	351	128	195	49	56	13	1,525
2010	448	288	269	118	184	43	35	20	1,405
2011	367	294	250	111	197	32	43	10	1,304
Latest per cent change	-18.1	2.1	-7.1	-5.9	7.1	-25.6	22.9	-50.0	-7.2
Average change per year (per cent)	-1.9	-4.0	-9.2	2.3	-4.2	-10.2	-9.7	-6.8	-4.5

### Deaths by road user

12 months ended June	Driver	Passenger	Pedestrian	Motorcyclist	Cyclist	Total <sup>a</sup>
2007	772	337	205	238	44	1,596
2008	727	306	194	234	28	1,489
2009	688	338	207	257	33	1,525
2010	677	290	178	220	38	1,405
2011	611	272	175	209	35	1,304
Latest per cent change	-9.7	-6.2	-1.7	-5.0	-7.9	-7.2
Average change per year (per cent)	-5.2	-4.7	-3.9	-3.2	-1.5	-4.5

<sup>a</sup> Includes deaths of unknown road user type

## Deaths by age-group (years)

12 months ended June	0 to 16	17 to 25	26 to 39	40 to 59	60 to 69	≥ 70	Total <sup>a</sup>
2007	112	402	406	381	109	185	1,596
2008	94	386	357	369	84	198	1,489
2009	93	408	373	369	109	173	1,525
2010	88	302	321	399	115	179	1,405
2011	71	321	280	346	105	174	1,304
Latest per cent change	-19.3	6.3	-12.8	-13.3	-8.7	-2.8	-7.2
Average change per year (per cent)	-9.3	-6.7	-8.1	-1.1	2.4	-2.2	-4.5

a Includes deaths to persons with age not recorded.

## Deaths by gender

12 months ended June	Males	Females	Total <sup>b</sup>
2007	1,184	410	1,596
2008	1,100	388	1,489
2009	1,096	427	1,525
2010	1,026	376	1,405
2011	953	348	1,304
Latest per cent change	-7.1	-7.4	-7.2
Average change per year (per cent)	-4.9	-3.5	-4.5

b Includes deaths to persons with gender not recorded.

## 3. Annual deaths per 100 000 population

### By jurisdiction

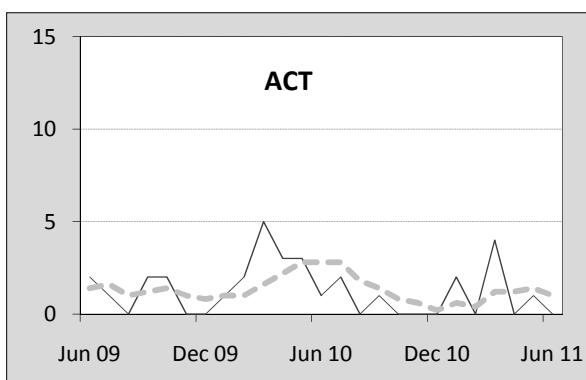
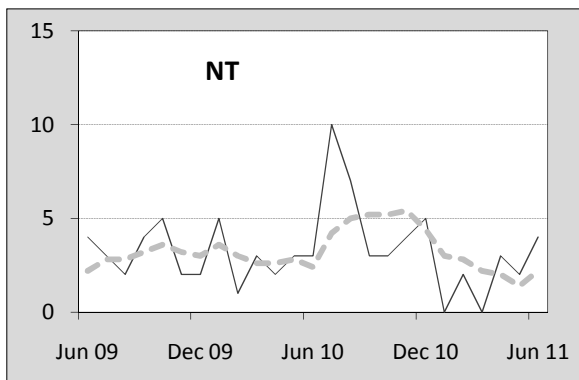
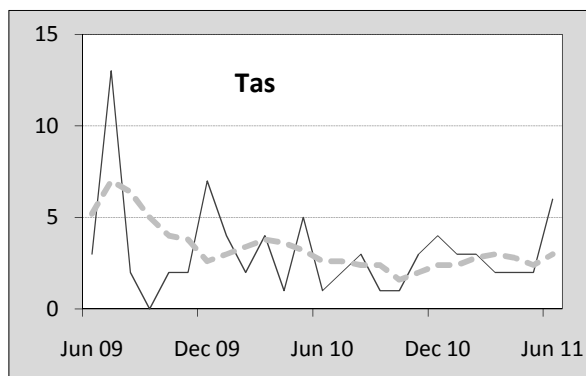
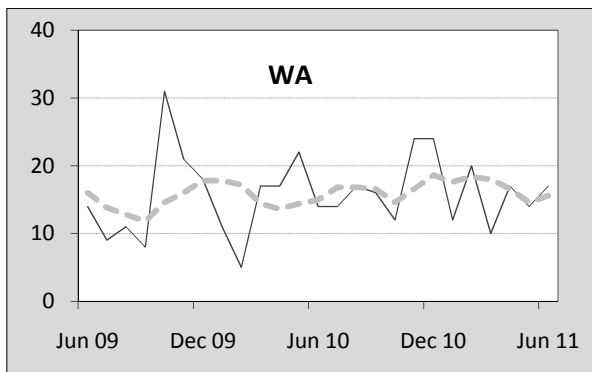
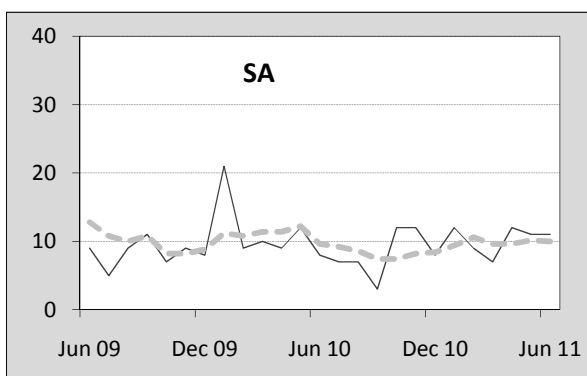
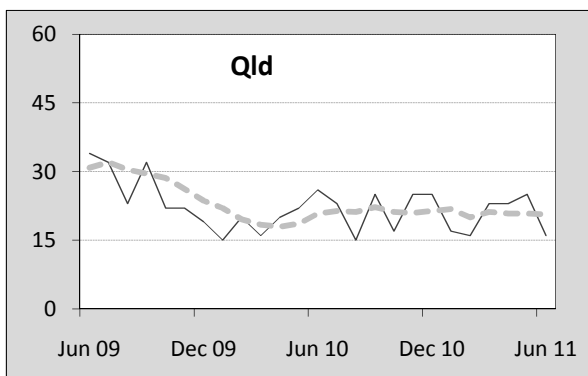
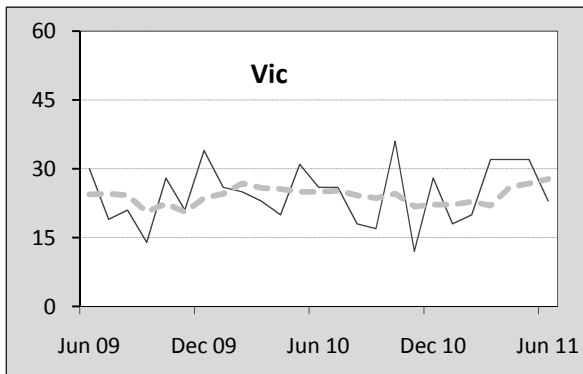
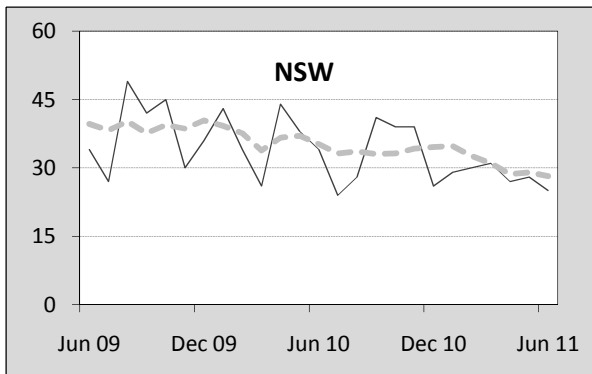
12 months ended June	NSW	Vic	Qld	SA	WA	Tas	NT	ACT	Australia
2007	6.44	6.52	8.84	6.60	10.70	11.39	24.02	5.04	7.65
2008	5.41	6.26	7.79	6.71	10.32	8.27	31.73	4.09	7.00
2009	6.11	5.59	8.03	7.93	8.81	9.78	25.12	3.73	7.02
2010	6.24	5.24	6.01	7.22	8.11	8.51	15.35	5.63	6.34
2011	5.05	5.26	5.50	6.73	8.50	6.28	18.71	2.76	5.80
Latest per cent change	-19.1	0.5	-8.6	-6.8	4.9	-26.2	21.8	-51.0	-8.5

Calendar year	NSW	Vic	Qld	SA	WA	Tas	NT	ACT	Australia
2006	7.28	6.57	8.19	7.46	9.71	11.23	21.84	3.89	7.73
2007	6.30	6.36	8.58	7.82	11.12	9.12	27.00	4.10	7.61
2008	5.33	5.69	7.61	6.17	9.42	7.83	34.01	4.04	6.68
2009	6.36	5.32	7.48	7.33	8.47	12.52	13.70	3.41	6.78
2010	5.75	5.19	5.52	7.18	8.42	6.11	21.33	5.02	6.10
Latest per cent change	-9.5	-2.5	-26.3	-2.1	-0.6	-51.2	55.7	47.4	-10.1

# Monthly deaths by jurisdiction — last 24 months

— raw  
 - - - smoothed (unweighted 5-point moving average)



## 5. Characteristics of fatal crashes

12 months ended June	Crashtype <sup>a</sup>			Posted speed limit				Total
	Single	Multiple	Pedestrian	0 to 60	70 to 90	100	≥ 110	
2007	696	558	204	450	302	498	182	1,458
2008	632	529	193	394	310	459	151	1,354
2009	658	516	206	446	331	414	160	1,380
2010	585	520	172	371	268	444	166	1,277
2011	542	485	173	318	267	385	167	1,200

12 months ended June	Day of week <sup>b</sup>		Time of Day <sup>c</sup>	
	Weekday	Weekend	Day	Night
2007	684	774	804	654
2008	695	657	767	585
2009	715	664	778	601
2010	646	631	753	524
2011	617	583	709	491

a 'Single' and 'Multiple' refer to the the number of vehicles involved in a fatal crash where no pedestrian is killed.

b 'Weekday' refers to 6am Monday through to 5:59pm Friday.

c 'Day' refers to 6am through to 5:59 pm.

---

## Appendix

### Definition

The road safety agencies in each jurisdiction use detailed criteria to define road crashes and road deaths. Briefly, a death is classified as resulting from a road crash if the crash occurred on a public road, is unintentional and the death occurred within 30 days from injuries sustained in the crash.

### Population rates

Rates per population are based on the deaths to the current 12 monthly period, and the population at the midpoint of the period. The population at midpoints are interpolated if necessary.

### Average (%) change per year

Calculated by fitting an exponential curve through the five data points, and quoting the constant (annual) change of this curve.

### Other sources for the tables in this bulletin

The underlying database used to produce this bulletin — *the Australian Road Deaths Database* is available for online querying and data extraction at <http://www.bitre.gov.au/info.aspx?NodId=167>

Road deaths from recent months are preliminary and subject to revision.