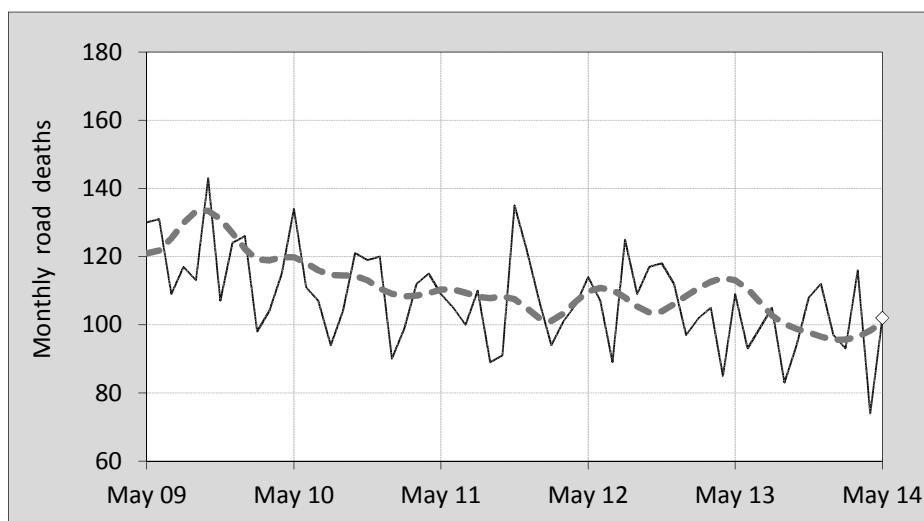




## This month's key figures

- There was a total of 102 road deaths during the month of May 2014. In comparison to the average for May over the previous five years, the current figure is 14.4 per cent lower.
- During the 12 months ended May there were 1,176 road deaths. This is a 7.8 per cent reduction compared to the total for the 12-monthly period ended May 2013.
- Presently the rate of annual deaths per 100,000 population stands at 5.1. Compared to the figure for the 12-monthly period ending May 2013, this is a 9.3 per cent reduction.

## Monthly Australian road deaths — last five years, with trend



### Data Sources

Data are obtained from

- Transport for NSW
- Vicroads
- Department of Transport and Main Roads, Queensland
- Department for Transport, Energy and Infrastructure, S.A.
- Western Australia Police
- Department of Infrastructure, Energy and Resources, Tasmania
- Department of Transport, Northern Territory
- Department of Territory and Municipal Services, ACT
- Australian Bureau of Statistics (3101.0)

### Inquiries

For further information about data in this bulletin, contact:

Bureau of Infrastructure, Transport and Regional Economics

Web : [www.bitre.gov.au](http://www.bitre.gov.au)

Email : [roadsafety@infrastructure.gov.au](mailto:roadsafety@infrastructure.gov.au)

Road deaths from recent months are preliminary and subject to revision.

© Copyright. Commonwealth of Australia

## I. Current month and year to date

### Deaths by jurisdiction

Current month	NSW	Vic	Qld	SA	WA	Tas	NT	ACT	Australia
May 2013	24	18	31	5	25	2	4	0	109
May 2014	31	22	21	7	10	4	7	0	102
Per cent change	29.2	22.2	-32.3	40.0	-60.0	100.0	75.0	-	-6.4

Year to date	NSW	Vic	Qld	SA	WA	Tas	NT	ACT	Australia
January 2013 - May 2013	127	99	130	41	73	12	12	4	498
January 2014 - May 2014	146	108	85	38	68	15	18	4	482
Per cent change	15.0	9.1	-34.6	-7.3	-6.8	25.0	50.0	0.0	-3.2

## 2. Yearly deaths — last five 12 monthly periods

### Deaths by jurisdiction

12 months ended May	NSW	Vic	Qld	SA	WA	Tas	NT	ACT	Australia
2010	447	292	277	119	184	45	36	21	1,421
2011	361	296	261	108	195	26	43	11	1,301
2012	379	271	277	93	177	23	51	3	1,274
2013	342	264	297	94	184	33	48	13	1,275
2014	358	251	226	95	157	39	43	7	1,176
Latest per cent change	4.7	-4.9	-23.9	1.1	-14.7	18.2	-10.4	-46.2	-7.8
Average trend change per year (per cent)	-4.9	-4.1	-2.7	-5.7	-3.7	-0.5	4.8	-18.4	-3.9

### Deaths by road user

12 months ended May	Driver	Passenger	Pedestrian	Motorcyclist	Pedal Cyclist	Total <sup>a</sup>
2010	686	295	184	217	38	1,421
2011	601	282	166	224	28	1,301
2012	565	271	195	206	35	1,274
2013	624	242	152	215	35	1,275
2014	537	219	169	186	59	1,176
Latest per cent change	-13.9	-9.5	11.2	-13.5	68.6	-7.8
Average trend change per year (per cent)	-4.4	-7.2	-2.5	-3.4	11.7	-3.9

a Includes deaths where road user type is unknown

## Deaths by age-group<sup>a</sup> (years)

<b>12 months ended May</b>	<i>0 to 16</i>	<i>17 to 25</i>	<i>26 to 39</i>	<i>40 to 64</i>	<i>65 to 74</i>	<i>≥ 75</i>	<i>Total<sup>b</sup></i>
2010	96	310	324	447	102	141	1,421
2011	70	319	280	414	86	132	1,301
2012	94	277	308	371	83	141	1,274
2013	68	278	275	408	106	139	1,275
2014	60	212	254	373	118	158	1,176
<i>Latest per cent change</i>	-11.8	-23.7	-7.6	-8.6	11.3	13.7	-7.8
<i>Average trend change per year (per cent)</i>	-9.2	-8.6	-4.9	-3.7	5.1	2.8	-3.9

a Note: Age groups were changed in March 2014.

b Includes deaths to persons with age not recorded.

## Deaths by gender

<b>12 months ended May</b>	<i>Males</i>	<i>Females</i>	<i>Total<sup>c</sup></i>
2010	1,047	372	1,421
2011	947	353	1,301
2012	916	357	1,274
2013	901	373	1,275
2014	857	318	1,176
<i>Latest per cent change</i>	-4.9	-14.7	-7.8
<i>Average trend change per year (per cent)</i>	-4.4	-2.6	-3.9

c Includes deaths to persons with gender not recorded.

## 3. Annual deaths per 100,000 population

### By jurisdiction

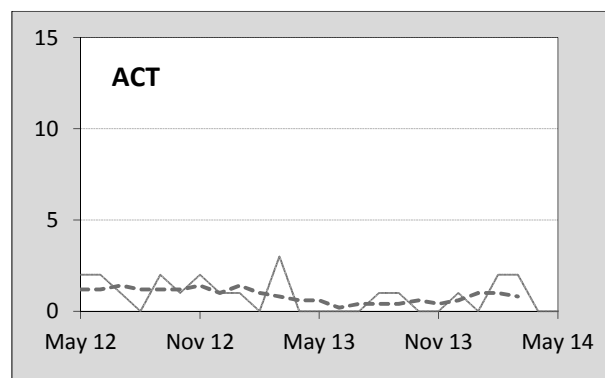
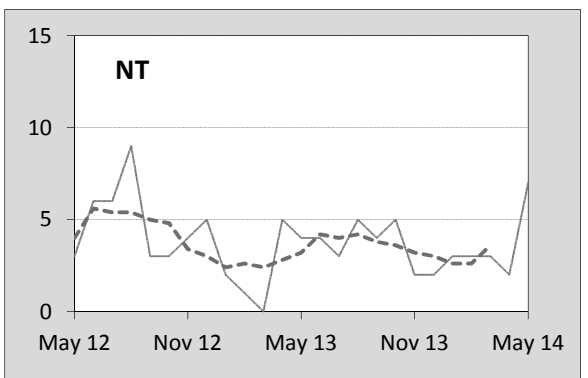
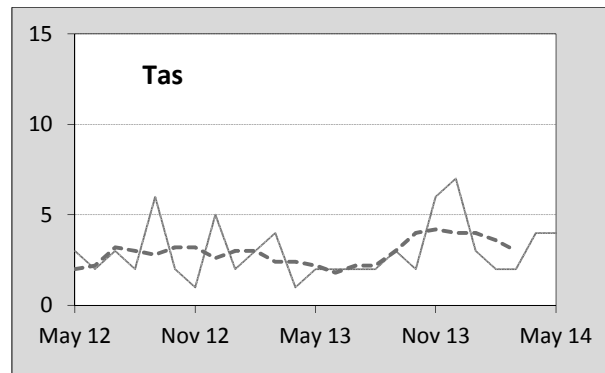
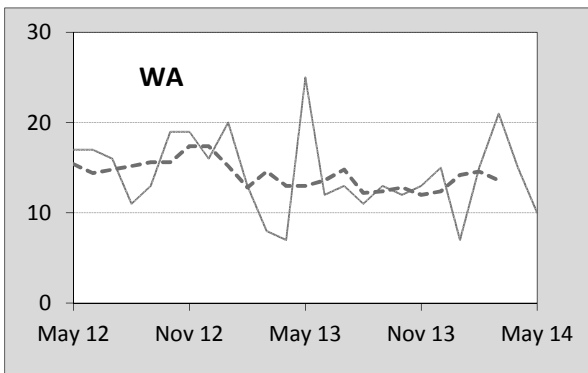
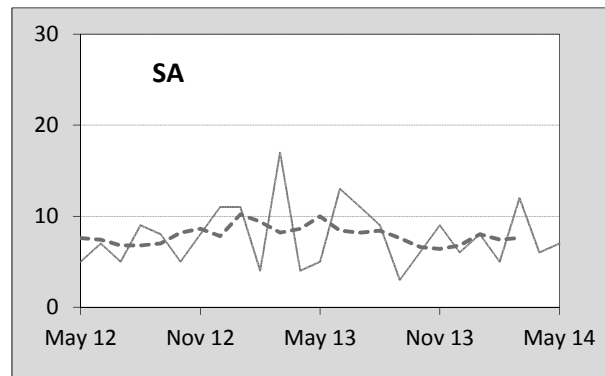
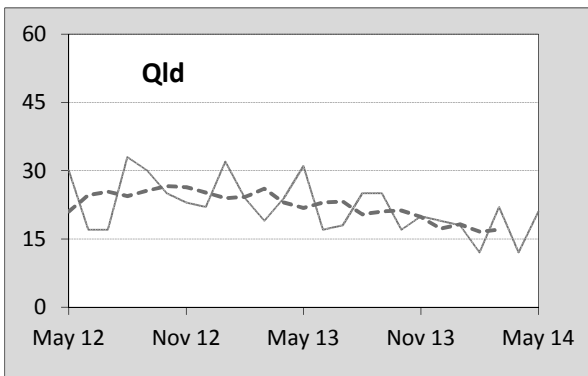
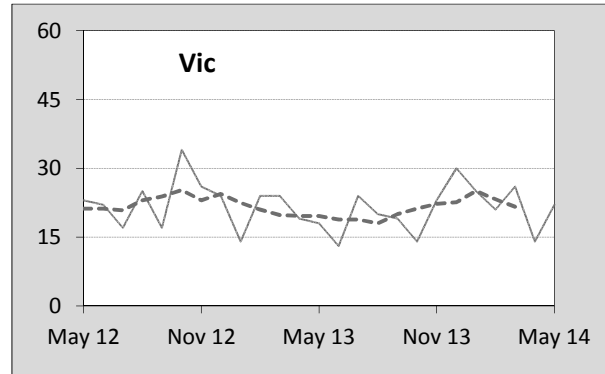
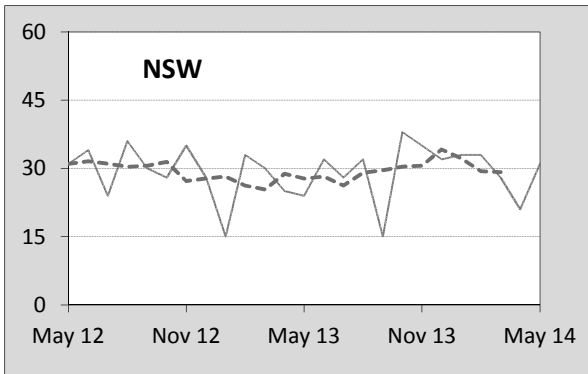
<b>12 months ended May</b>	<i>NSW</i>	<i>Vic</i>	<i>Qld</i>	<i>SA</i>	<i>WA</i>	<i>Tas</i>	<i>NT</i>	<i>ACT</i>	<i>Australia</i>
2010	6.30	5.39	6.35	7.36	8.14	8.89	15.82	5.88	6.49
2011	5.03	5.39	5.89	6.62	8.43	5.10	18.67	3.02	5.87
2012	5.22	4.86	6.14	5.65	7.42	4.49	21.92	0.81	5.66
2013	4.65	4.65	6.45	5.66	7.44	6.44	20.18	3.44	5.57
2014	4.81	4.34	4.82	5.66	6.19	7.56	17.76	1.82	5.05
<i>Latest per cent change</i>	3.2	-6.6	-25.3	0.0	-16.9	17.4	-12.0	-47.1	-9.3
<i>Average trend change per year (per cent)</i>	-6.0	-5.6	-4.5	-6.6	-6.5	-0.9	3.1	-19.8	-5.4

<b>Calendar year</b>	<i>NSW</i>	<i>Vic</i>	<i>Qld</i>	<i>SA</i>	<i>WA</i>	<i>Tas</i>	<i>NT</i>	<i>ACT</i>	<i>Australia</i>
2009	6.44	5.40	7.65	7.40	8.53	12.49	13.72	3.38	6.86
2010	5.67	5.27	5.65	7.25	8.42	6.09	21.76	5.25	6.14
2011	5.04	5.18	6.01	6.28	7.61	4.69	19.46	1.63	5.72
2012	5.05	5.01	6.13	5.68	7.47	6.05	20.77	3.20	5.72
2013	4.57	4.22	5.82	5.87	6.43	7.02	15.37	1.83	5.15
<i>Latest per cent change</i>	-9.4	-15.8	-5.1	3.3	-13.9	15.9	-26.0	-42.6	-9.9

#### 4. Monthly deaths by jurisdiction — last 24 months

— raw  
 - - - smoothed (unweighted 5-point moving average)



## 5. Fatal crashes: counts and characteristics

12 months ended May	Crash type <sup>a</sup>			Posted speed limit				Total <sup>b</sup>
	Single	Multiple	Pedestrian	0 to 60	70 to 90	100	≥ 110	
2010	586	528	178	393	279	439	174	1,292
2011	532	497	164	335	276	413	163	1,193
2012	499	466	191	389	253	371	130	1,156
2013	553	463	151	373	265	369	150	1,167
2014	463	451	168	327	242	352	130	1,082
<i>Average trend change per year (per cent)</i>	-4.2	-3.8	-2.0	-2.6	-3.2	-5.4	-6.4	-3.7

12 months ended May	Day of week <sup>c</sup>		Time of Day <sup>d</sup>	
	Weekday	Weekend	Day	Night
2010	783	509	766	526
2011	687	506	692	501
2012	701	455	729	427
2013	717	450	717	450
2014	657	425	688	394
<i>Average trend change per year (per cent)</i>	-3.0	-4.7	-1.8	-6.6

a 'Single' and 'Multiple' refer to the number of vehicles involved in a fatal crash where there is no pedestrian killed.

b Includes crashes where speed limit is unknown

c 'Weekday' refers to 6am Monday through to 5:59pm Friday.

d 'Day' refers to 6am through to 5:59 pm.

## Appendix

### Definition

The road safety agencies in each jurisdiction use detailed criteria to define road crashes and road deaths. Briefly, a death is classified as resulting from a road crash if the crash occurred on a public road, is unintentional and the death occurred within 30 days from injuries sustained in the crash.

### Population rates

Rates per population are based on the deaths to the current 12 monthly period, and the population at the midpoint of the period. The population at midpoints are interpolated if necessary.

### Average trend change ( % per year )

Calculated by fitting an exponential curve through the five data points, and quoting the constant (annual) change of this curve.

### Other sources for the tables in this bulletin

The underlying database used to produce this bulletin — the Australian Road Deaths Database is available for online querying and data extraction at

< [http://www.bitre.gov.au/statistics/safety/fatal\\_road\\_crash\\_database.aspx](http://www.bitre.gov.au/statistics/safety/fatal_road_crash_database.aspx) >

Road deaths from recent months are preliminary and subject to revision.