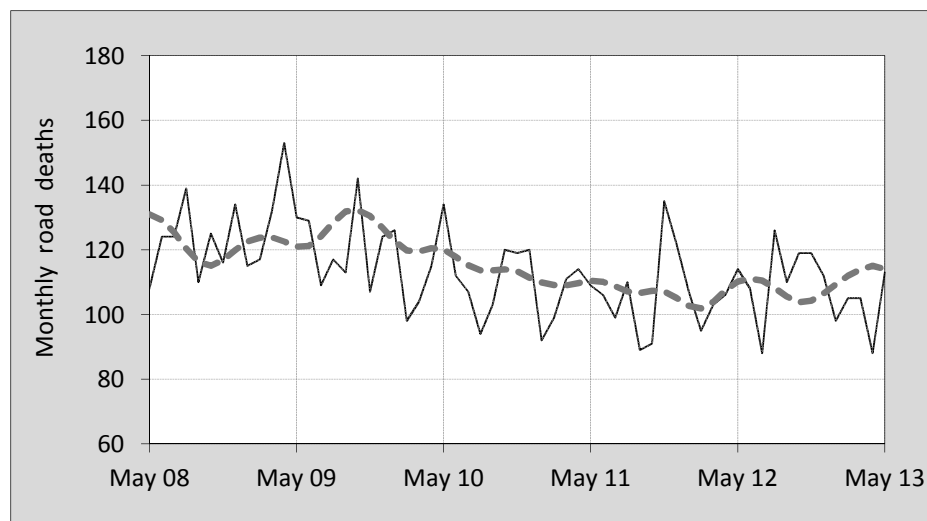




This month's key figures

- There was a total of 113 road deaths in May 2013. In comparison to the average for May over the previous five years, the current figure is 4.6 per cent lower.
- During the 12 months ended May there were 1,291 road deaths. This is a 1.1 per cent increase over the total for the 12-monthly period ending May 2012.
- Presently the rate of annual deaths per 100,000 population stands at 5.7. This is a 0.5 per cent decrease over the figure for the 12-monthly period ending May 2012.

Monthly Australian road deaths — last five years, with trend



Data Sources

Data are obtained from

- Transport for NSW
- Vicroads
- Department of Transport and Main Roads, Queensland
- Department for Transport, Energy and Infrastructure, S.A.
- Western Australia Police
- Department of Infrastructure, Energy and Resources, Tasmania
- Department of Lands and Planning, Northern Territory
- Department of Territory and Municipal Services, ACT
- Australian Bureau of Statistics (3101.0)

Inquiries

For further information about data in this bulletin, contact:

Bureau of Infrastructure, Transport and
Regional Economics

Web : www.bitre.gov.au

Email : roadsafety@infrastructure.gov.au

Road deaths from recent months are preliminary and subject to revision.

© Copyright. Commonwealth of Australia

I. Current month and year to date

Deaths by jurisdiction

Current month	NSW	Vic	Qld	SA	WA	Tas	NT	ACT	Australia
May 2012	31	23	30	5	17	3	3	2	114
May 2013	27	18	31	5	26	2	4	0	113
Per cent change	-12.9	-21.7	3.3	0.0	52.9	-33.3	33.3	-100.0	-0.9

Year to date	NSW	Vic	Qld	SA	WA	Tas	NT	ACT	Australia
January 2012 - May 2012	154	117	113	41	74	10	13	3	525
January 2013 - May 2013	135	99	130	44	75	11	12	3	509
Per cent change	-12.3	-15.4	15.0	7.3	1.4	10.0	-7.7	0.0	-3.0

2. Yearly deaths — last five 12 monthly periods

Deaths by jurisdiction

12 months ended May	NSW	Vic	Qld	SA	WA	Tas	NT	ACT	Australia
2009	428	291	348	125	203	51	59	14	1,519
2010	446	292	277	119	183	45	35	21	1,418
2011	361	296	261	108	195	26	42	11	1,300
2012	379	271	277	93	181	23	50	3	1,277
2013	354	264	297	97	186	34	47	12	1,291
Latest per cent change	-6.6	-2.6	7.2	4.3	2.8	47.8	-6.0	300.0	1.1
Average trend change per year (per cent)	-5.3	-2.7	-3.1	-7.3	-1.8	-13.8	-1.0	-20.2	-4.2

Deaths by road user

12 months ended May	Driver	Passenger	Pedestrian	Motorcyclist	Cyclist	Total ^a
2009	687	339	201	255	35	1,519
2010	687	292	182	217	38	1,418
2011	600	283	166	223	28	1,300
2012	568	269	196	207	35	1,277
2013	637	241	153	216	35	1,291
Latest per cent change	12.1	-10.4	-21.9	4.3	0.0	1.1
Average trend change per year (per cent)	-3.4	-7.4	-4.6	-3.7	-0.8	-4.2

a Includes deaths of unknown road user type

Deaths by age-group (years)

12 months ended May	<i>0 to 16</i>	<i>17 to 25</i>	<i>26 to 39</i>	<i>40 to 59</i>	<i>60 to 69</i>	<i>≥ 70</i>	<i>Total^b</i>
2009	90	414	370	371	110	164	1,519
2010	95	309	324	385	114	190	1,418
2011	70	319	280	357	105	169	1,300
2012	95	276	309	301	107	189	1,277
2013	69	283	276	327	146	188	1,291
<i>Latest per cent change</i>	-27.4	2.5	-10.7	8.6	36.4	-0.5	1.1
<i>Average trend change per year (per cent)</i>	-5.2	-8.4	-6.1	-4.9	5.2	2.7	-4.2

b. Includes deaths to persons with age not recorded.

Deaths by gender

12 months ended May	<i>Males</i>	<i>Females</i>	<i>Total^c</i>
2009	1,098	418	1,519
2010	1,042	373	1,418
2011	945	354	1,300
2012	920	356	1,277
2013	919	371	1,291
<i>Latest per cent change</i>	-0.1	4.2	1.1
<i>Average trend change</i>	-4.7	-2.8	-4.2

c. Includes deaths to persons with gender not recorded.

3. Annual deaths per 100,000 population

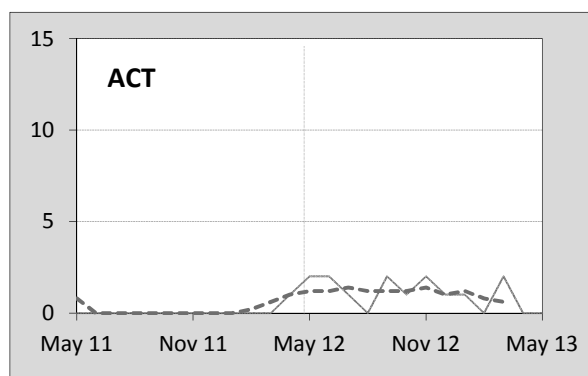
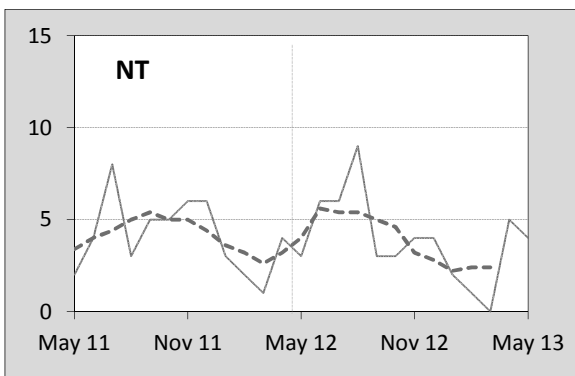
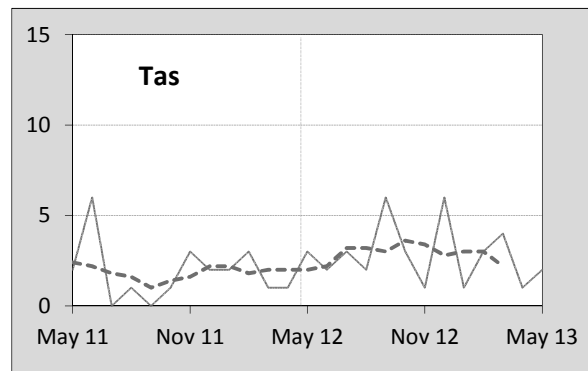
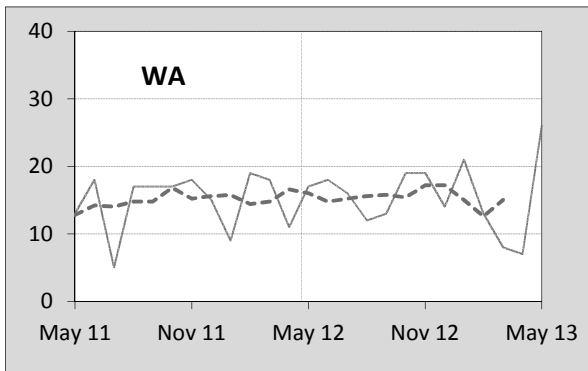
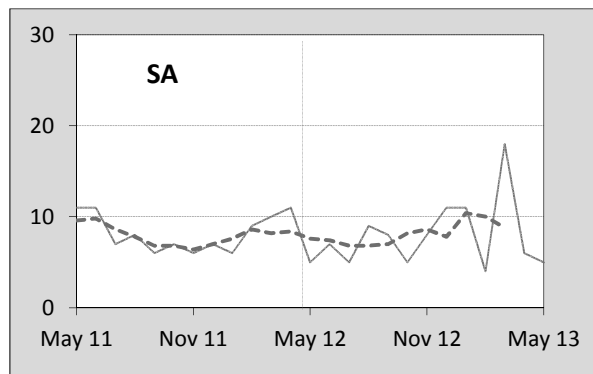
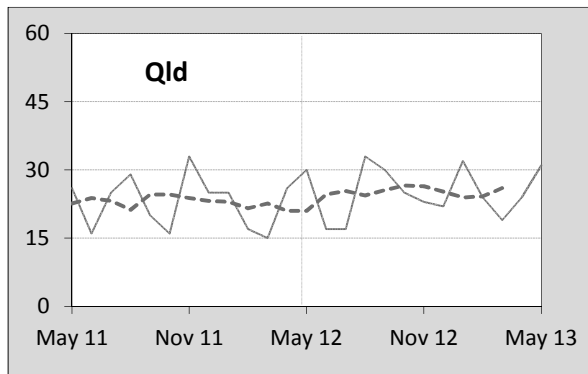
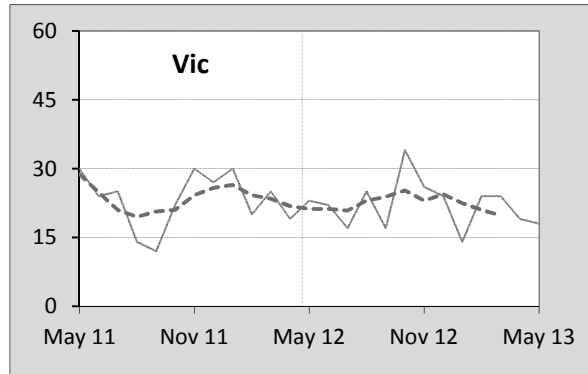
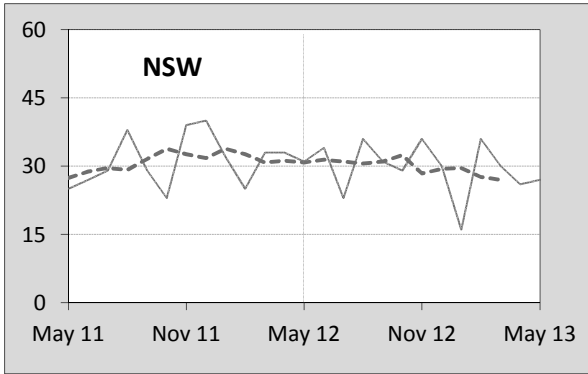
By jurisdiction

12 months ended May	<i>NSW</i>	<i>Vic</i>	<i>Qld</i>	<i>SA</i>	<i>WA</i>	<i>Tas</i>	<i>NT</i>	<i>ACT</i>	<i>Australia</i>
2009	6.10	5.45	8.07	7.79	9.19	10.18	29.63	4.00	7.05
2010	6.28	5.38	6.31	7.34	8.07	8.90	15.34	5.89	6.47
2011	5.03	5.39	5.87	6.61	8.42	5.10	18.64	3.03	5.87
2012	5.23	4.87	6.15	5.66	7.60	4.49	21.10	0.81	5.69
2013	4.83	4.67	6.43	5.83	7.63	6.63	19.45	3.21	5.66
<i>Latest per cent change</i>	-7.7	-4.1	4.5	3.1	0.4	47.5	-7.8	296.1	-0.5
<i>Average trend change per year (per cent)</i>	-6.3	-4.0	-4.7	-8.1	-4.2	-14.3	-5.1	-21.5	-5.5

Calendar year	<i>NSW</i>	<i>Vic</i>	<i>Qld</i>	<i>SA</i>	<i>WA</i>	<i>Tas</i>	<i>NT</i>	<i>ACT</i>	<i>Australia</i>
2008	5.36	5.72	7.68	6.20	9.41	7.82	33.95	4.03	6.72
2009	6.41	5.38	7.58	7.37	8.46	12.50	13.23	3.39	6.83
2010	5.67	5.27	5.63	7.24	8.41	6.10	21.28	5.27	6.13
2011	5.05	5.19	6.01	6.29	7.65	4.69	19.02	1.63	5.72
2012	5.12	5.01	6.14	5.68	7.61	6.45	20.44	3.20	5.76
<i>Latest per cent change</i>	1.4	-3.3	2.1	-9.7	-0.5	37.3	7.5	96.3	0.7

4. Monthly deaths by jurisdiction — last 24 months

— raw
 - - - smoothed (unweighted 5-point moving average)



5. Fatal crashes: counts and characteristics

12 months ended May	Crash type ^d			Posted speed limit				Total ^e
	Single	Multiple	Pedestrian	0 to 60	70 to 90	100	≥ 110	
2009	670	502	200	444	328	413	155	1,372
2010	588	526	176	382	270	438	171	1,290
2011	534	495	164	329	273	412	161	1,193
2012	501	466	192	390	252	369	132	1,159
2013	565	466	152	369	259	369	151	1,183
<i>Average trend change per year (per cent)</i>	-4.9	-2.7	-4.5	-3.4	-5.3	-3.9	-3.1	-4.0

12 months ended May	Day of week ^f		Time of Day ^g	
	Weekday	Weekend	Day	Night
2009	822	536	770	602
2010	783	491	766	524
2011	688	485	693	500
2012	703	443	734	425
2013	733	435	734	449
<i>Average trend change per year (per cent)</i>	-3.3	-5.1	-1.4	-7.7

d 'Single' and 'Multiple' refer to the the number of vehicles involved in a fatal crash where there is no pedestrian killed.

e Includes crashes where speed limit is unknown

f 'Weekday' refers to 6am Monday through to 5:59pm Friday.

g 'Day' refers to 6am through to 5:59 pm.

Appendix

Definition

The road safety agencies in each jurisdiction use detailed criteria to define road crashes and road deaths. Briefly, a death is classified as resulting from a road crash if the crash occurred on a public road, is unintentional and the death occurred within 30 days from injuries sustained in the crash.

Population rates

Rates per population are based on the deaths to the current 12 monthly period, and the population at the midpoint of the period. The population at midpoints are interpolated if necessary.

Average trend change (% per year)

Calculated by fitting an exponential curve through the five data points, and quoting the constant (annual) change of this curve.

Other sources for the tables in this bulletin

The underlying database used to produce this bulletin — the Australian Road Deaths Database is available for online querying and data extraction at

< http://www.bitre.gov.au/statistics/safety/fatal_road_crash_database.aspx >

Road deaths from recent months are preliminary and subject to revision.