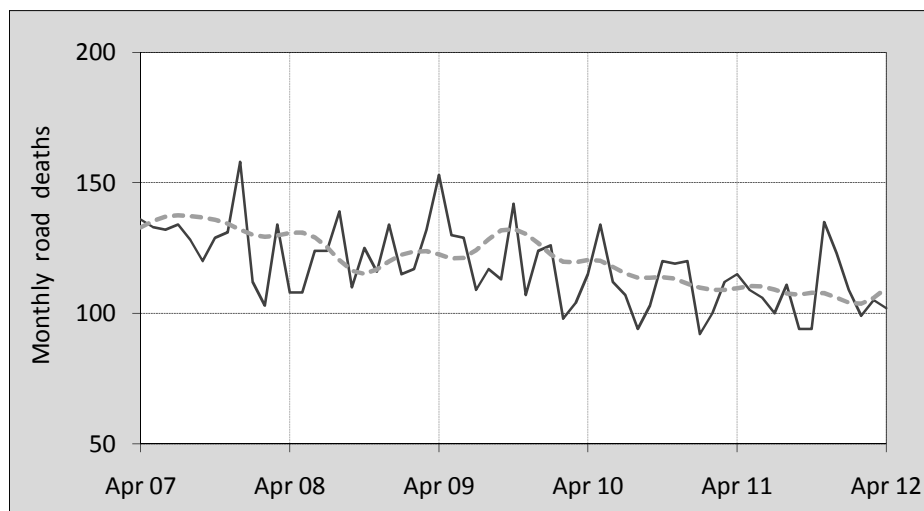




## This month's key figures

- There was a total of 102 road deaths in April 2012. In comparison to the average for the month of April over the previous five years, the current figure is 18.7 per cent lower.
- During the 12 months ended April 2012 there were 1,287 deaths. This is a 3.1 per cent reduction from the 12-monthly period ending April 2011.
- The rate of annual deaths per 100,000 population presently stands at 5.7. This is a 4.1 per cent reduction from the 12-monthly period ending April 2011.

## Monthly Australian road deaths — last five years, with trend



### Data Sources

Data are obtained from

- Roads and Traffic Authority, NSW
- Vicroads
- Department of Transport and Main Roads, Queensland
- Department for Transport, Energy and Infrastructure, S.A.
- Western Australia Police
- Department of Infrastructure, Energy and Resources, Tasmania
- Department of Lands and Planning, Northern Territory
- Department of Territory and Municipal Services, ACT
- Australian Bureau of Statistics (3101.0)

### Inquiries

For further information about data in this bulletin, contact:

Bureau of Infrastructure, Transport and Regional Economics

Web : [www.bitre.gov.au](http://www.bitre.gov.au)

Email : [roadsafety@infrastructure.gov.au](mailto:roadsafety@infrastructure.gov.au)

Road deaths from recent months are preliminary and subject to revision.

© Copyright. Commonwealth of Australia

## I. Current month and year to date

### Deaths by jurisdiction

Current month	NSW	Vic	Qld	SA	WA	Tas	NT	ACT	Australia
April 2011	26	31	23	12	18	2	3	0	115
April 2012	31	20	25	11	9	1	4	1	102
Per cent change	19.2	-35.5	8.7	-8.3	-50.0	-50.0	33.3	-	-11.3

Year to date	NSW	Vic	Qld	SA	WA	Tas	NT	ACT	Australia
January 2011 - April 2011	116	103	79	40	60	10	5	6	419
January 2012 - April 2012	125	99	83	36	54	7	10	1	415
Latest per cent change	7.8	-3.9	5.1	-10.0	-10.0	-30.0	100.0	-83.3	-1.0

## 2. Yearly deaths — last five 12 monthly periods

### Deaths by jurisdiction

12 months ended April	NSW	Vic	Qld	SA	WA	Tas	NT	ACT	Australia
2008	394	339	354	109	214	38	62	12	1,522
2009	416	297	342	110	203	48	66	15	1,497
2010	445	280	282	127	179	47	35	19	1,414
2011	375	297	257	109	203	30	43	14	1,328
2012	386	283	273	99	174	22	49	1	1,287
Latest per cent change	2.9	-4.7	6.2	-9.2	-14.3	-26.7	14.0	-92.9	-3.1
Average change per year (per cent)	-1.4	-3.5	-7.7	-2.0	-4.1	-14.5	-8.6	-39.6	-4.5

### Deaths by road user

12 months ended April	Driver	Passenger	Pedestrian	Motorcyclist	Cyclist	Total <sup>a</sup>
2008	745	325	191	229	32	1,522
2009	684	319	202	257	33	1,497
2010	665	301	182	225	39	1,414
2011	616	286	176	221	29	1,328
2012	592	268	191	198	34	1,287
latest per cent change	-3.9	-6.3	8.5	-10.4	17.2	-3.1
Average change per year (per cent)	-5.5	-4.8	-1.4	-4.3	-0.1	-4.5

<sup>a</sup> Includes deaths of unknown road user type

## Deaths by age-group (years)

<b>12 months ended April</b>	<i>0 to 16</i>	<i>17 to 25</i>	<i>26 to 39</i>	<i>40 to 59</i>	<i>60 to 69</i>	<i>≥ 70</i>	<i>Total<sup>a</sup></i>
2008	100	383	383	373	87	195	1,522
2009	83	401	370	373	104	166	1,497
2010	99	311	323	377	112	191	1,414
2011	74	330	283	362	109	170	1,328
2012	89	280	303	309	116	184	1,287
<i>latest per cent change</i>	20.3	-15.2	7.1	-14.6	6.4	8.2	-3.1
<i>Average change per year (per cent)</i>	-3.4	-7.9	-7.1	-4.0	6.4	-0.9	-4.5

a Includes deaths to persons with age not recorded.

## Deaths by gender

<b>12 months ended April</b>	<i>Males</i>	<i>Females</i>	<i>Total<sup>b</sup></i>
2008	1,110	412	1,522
2009	1,078	416	1,497
2010	1,046	365	1,414
2011	959	367	1,328
2012	928	358	1,287
<i>latest per cent change</i>	-3.2	-2.5	-3.1
<i>Average change per year (per cent)</i>	-4.6	-4.0	-4.5

b Includes deaths to persons with gender not recorded.

## 3. Annual deaths per 100,000 population

### By jurisdiction

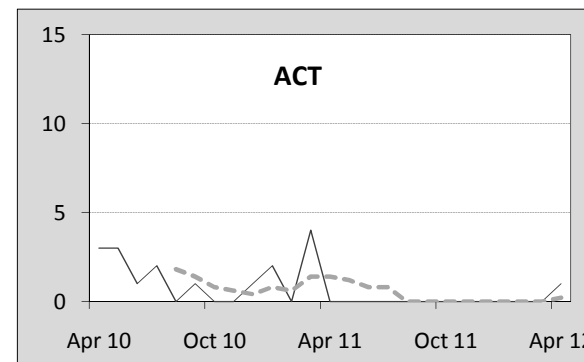
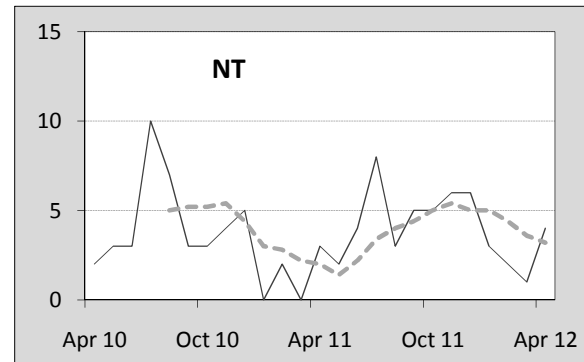
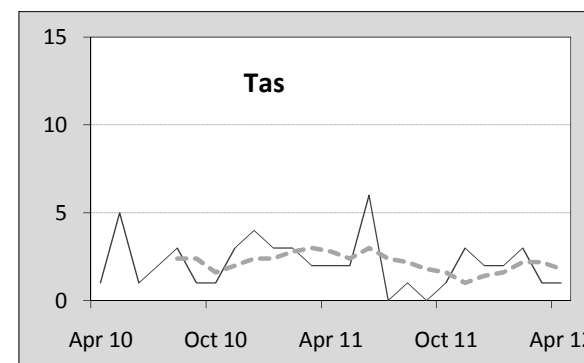
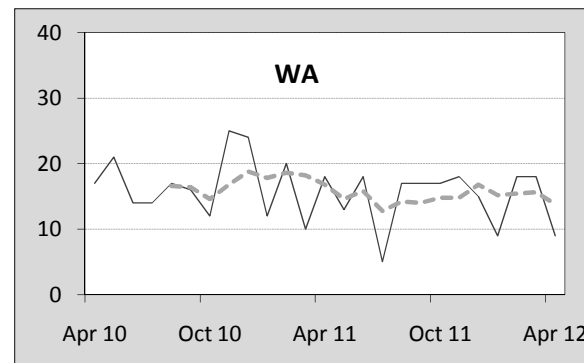
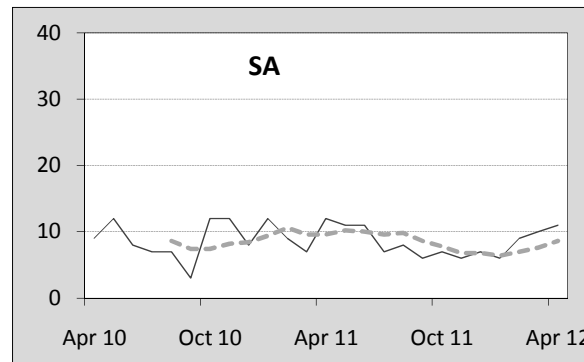
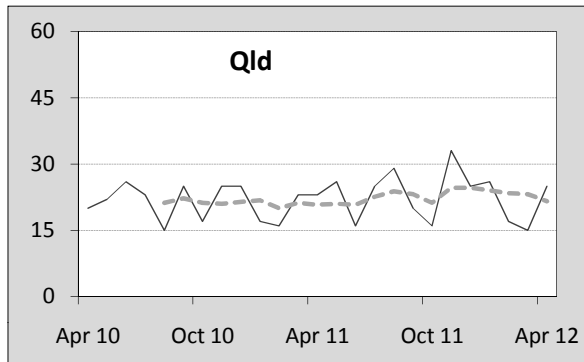
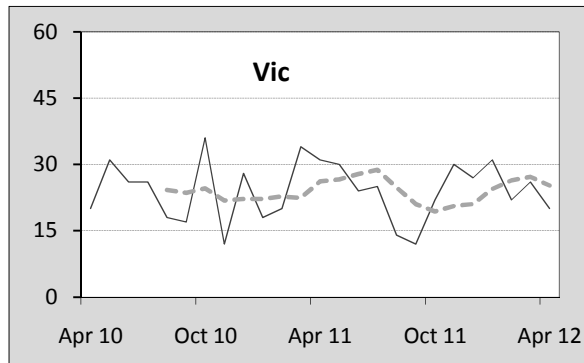
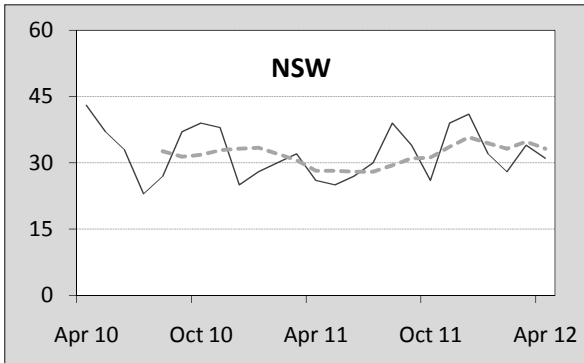
<b>12 months ended April</b>	<i>NSW</i>	<i>Vic</i>	<i>Qld</i>	<i>SA</i>	<i>WA</i>	<i>Tas</i>	<i>NT</i>	<i>ACT</i>	<i>Australia</i>
2008	5.68	6.45	8.37	6.85	10.04	7.68	28.63	3.51	7.18
2009	5.90	5.53	7.87	6.83	9.22	9.60	29.69	4.31	6.91
2010	6.21	5.11	6.33	7.78	7.92	9.31	15.39	5.36	6.40
2011	5.17	5.33	5.67	6.61	8.80	5.90	18.72	3.88	5.93
2012	5.29	5.04	5.93	5.96	7.42	4.30	21.16	0.27	5.69
<i>latest per cent change</i>	2.3	-5.5	4.4	-9.8	-15.6	-27.0	13.0	-92.9	-4.1

<b>Calendar year</b>	<i>NSW</i>	<i>Vic</i>	<i>Qld</i>	<i>SA</i>	<i>WA</i>	<i>Tas</i>	<i>NT</i>	<i>ACT</i>	<i>Australia</i>
2007	6.30	6.36	8.58	7.82	11.12	9.12	27.00	4.10	7.61
2008	5.33	5.69	7.61	6.17	9.42	7.83	34.01	4.04	6.68
2009	6.36	5.32	7.48	7.33	8.47	12.52	13.26	3.41	6.78
2010	5.61	5.20	5.53	7.18	8.43	6.11	21.37	5.30	6.06
2011	5.16	5.10	5.87	6.22	7.67	4.90	19.12	1.64	5.71
<i>latest per cent change</i>	-8.0	-1.8	6.3	-13.4	-9.0	-19.9	-10.6	-69.0	-5.9

# Monthly deaths by jurisdiction — last 24 months

— raw  
 - - - smoothed (unweighted 5-point moving average)



## 5. Characteristics of fatal crashes

12 months ended April	Crash type <sup>a</sup>			Posted speed limit				Total <sup>b</sup>
	Single	Multiple	Pedestrian	0 to 60	70 to 90	100	≥ 110	
2008	652	533	189	399	316	475	148	1,374
2009	650	512	201	439	317	415	160	1,363
2010	594	509	176	385	275	422	168	1,279
2011	542	503	174	343	276	416	163	1,219
2012	521	462	187	362	243	375	135	1,170
Average change per year (per cent)	-6.1	-3.0	-1.6	-4.3	-6.4	-4.6	-1.6	-4.2

12 months ended April	Day of week <sup>c</sup>		Time of Day <sup>d</sup>	
	Weekday	Weekend	Day	Night
2008	822	534	785	589
2009	823	528	758	605
2010	780	482	756	523
2011	701	500	709	510
2012	693	462	726	444
Average change per year (per cent)	-4.9	-3.4	-2.2	-7.1

a 'Single' and 'Multiple' refer to the the number of vehicles involved in a fatal crash where there is no pedestrian killed.

b Includes crashes where speed limit is unknown

c 'Weekday' refers to 6am Monday through to 5:59pm Friday.

d 'Day' refers to 6am through to 5:59 pm.

## Appendix

### Definition

The road safety agencies in each jurisdiction use detailed criteria to define road crashes and road deaths. Briefly, a death is classified as resulting from a road crash if the crash occurred on a public road, is unintentional and the death occurred within 30 days from injuries sustained in the crash.

### Population rates

Rates per population are based on the deaths to the current 12 monthly period, and the population at the midpoint of the period. The population at midpoints are interpolated if necessary.

### Average (%) change per year

Calculated by fitting an exponential curve through the five data points, and quoting the constant (annual) change of this curve.

### Other sources for the tables in this bulletin

The underlying database used to produce this bulletin — *the Australian Road Deaths Database* is available for online querying and data extraction at

< [http://www.bitre.gov.au/statistics/safety/fatal\\_road\\_crash\\_database.aspx](http://www.bitre.gov.au/statistics/safety/fatal_road_crash_database.aspx) >

Road deaths from recent months are preliminary and subject to revision.

## 6. Supplementary data — Easter 2003 to 2012

The five-day Easter period covers Thursday, Friday, Saturday, Easter Sunday and Monday.

The charts below show the number of deaths throughout this period for each year from 2003.

