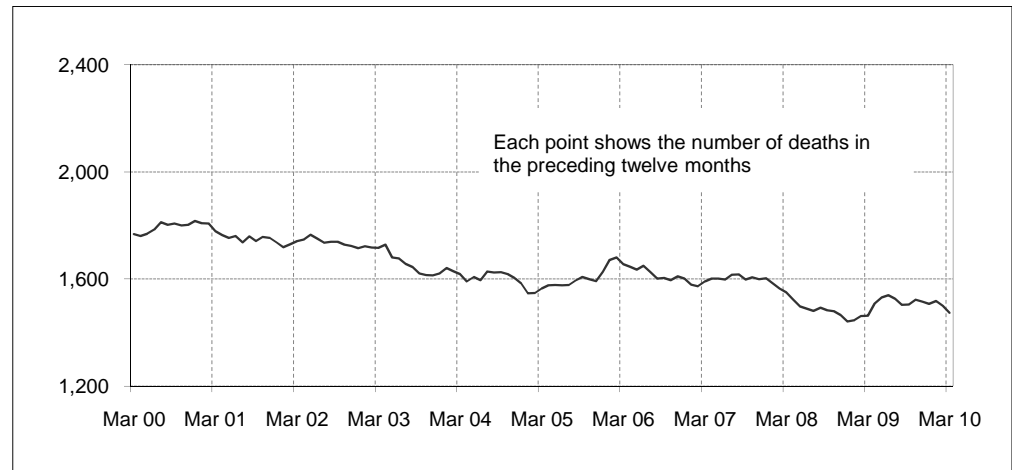



Australian road deaths for 12 months to date — last 10 years
**Inquiries**

For further information about data in this bulletin, contact:

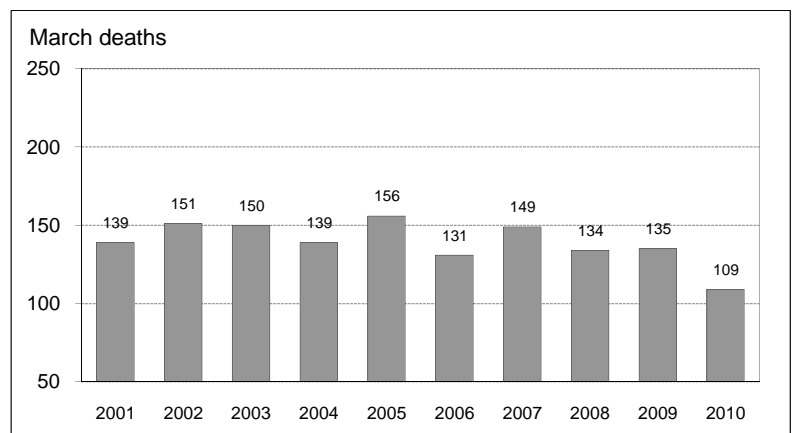
Infrastructure, Surface Transport & Road Safety Statistics
 BITRE
 Department of Infrastructure, Transport,
 Regional Development and Local Government
 GPO Box 594,
 Canberra, ACT 2601
 Email: roadsafety@infrastructure.gov.au
 Internet: www.infrastructure.gov.au

Data Sources

The data presented here are obtained from the following sources:

- Roads and Traffic Authority, NSW
- Vicroads
- Queensland Transport
- Department for Transport, Energy and Infrastructure, South Australia
- Western Australia Police
- Department of Infrastructure, Energy and Resources, Tasmania
- Department of Planning and Infrastructure, Northern Territory
- Territory and Municipal Services, ACT

- Road deaths from recent months are preliminary and subject to revision.

Australian road deaths for March — last 10 years
**This month's key figures**

There was a total of 109 road deaths in March 2010.

- this is a 19.3 per cent decrease from the March 2009 figure.

There have been 338 road deaths in 2010 to the end of March.

- this is an 8.9 per cent decrease from the same 3 month period in 2009.

NUMBER OF ROAD CRASH DEATHS IN EACH STATE / TERRITORY

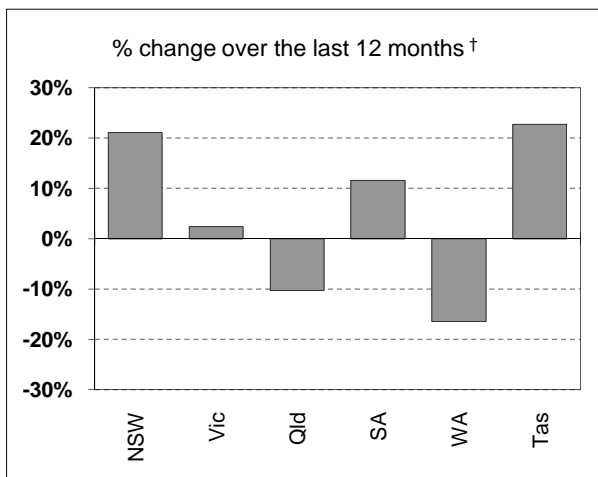
Road deaths by State/Territory

for current month, year to date, 12 months ended March, and five year trend

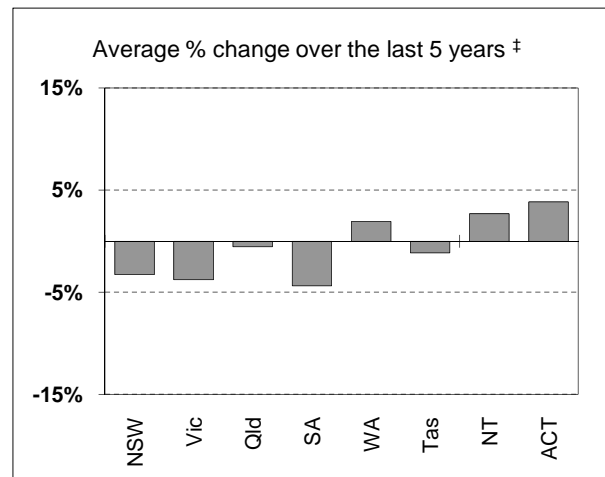
	NSW	Vic	Qld	SA	WA	Tas	NT	ACT	Australia
Current month									
Mar 2010	28	27	16	10	17	4	2	5	109
Mar 2009	41	23	31	13	17	5	2	3	135
% change	-31.7	17.4	-48.4	-23.1	0.0	-20.0	0.0	66.7	-19.3
Year to date									
Jan 2010 - Mar 2010	109	79	51	40	34	10	7	8	338
Jan 2009 - Mar 2009	101	72	84	34	53	20	4	3	371
% change	7.9	9.7	-39.3	17.6	-35.8	-50.0	75.0	166.7	-8.9
12-months to date									
Apr 2009 - Mar 2010	471	297	298	125	178	54	34	17	1,474
Apr 2008 - Mar 2009	389	290	332	112	213	44	68	15	1,463
Difference	82	7	-34	13	-35	10	-34	2	11
% change	21.1	2.4	-10.2	11.6	-16.4	22.7	-50.0	13.3	0.8
Average annual % change over 5 years^a									
YE March 2005 to YE March 2010	-3.3	-3.8	-0.5	-4.4	1.9	-1.1	2.7	3.8	-2.0

^a Average annual percentage change based on the exponential trend for the last five 12-month periods

Percentage change in deaths in each State



† Percentage change between the two 12-month periods ending March 2010 and March 2009.
NT and ACT not shown.



‡ Average annual percentage change based on the exponential trend from the year ending March 2005 to year ending March 2010.

NUMBER OF DEATHS IN EACH ROAD USER GROUP

Road deaths by road user group and gender

for 12 months ended March 2010, March 2009 and five year trend

	Drivers	Passengers	Pedestrians	Motor-cyclists ^a	Cyclists	All road users ^b
Males						
Apr 2009 - Mar 2010	519	177	148	207	32	1,083
Apr 2008 - Mar 2009	498	164	130	232	29	1,055
% change	4.2	7.9	13.8	-10.8	10.3	2.7
Females						
Apr 2009 - Mar 2010	176	140	54	10	5	387
Apr 2008 - Mar 2009	194	129	62	18	3	406
% change	-9.3	8.5	-12.9	-44.4	66.7	-4.7
Persons^c						
Apr 2009 - Mar 2010	695	320	203	217	37	1,474
Apr 2008 - Mar 2009	692	295	192	250	32	1,463
% change	0.4	8.5	5.7	-13.2	15.6	0.8
Average annual % change over 5 years^d						
YE March 2005 to YE March 2010	-2.3	-3.3	-2.0	1.3	-1.3	-2.0

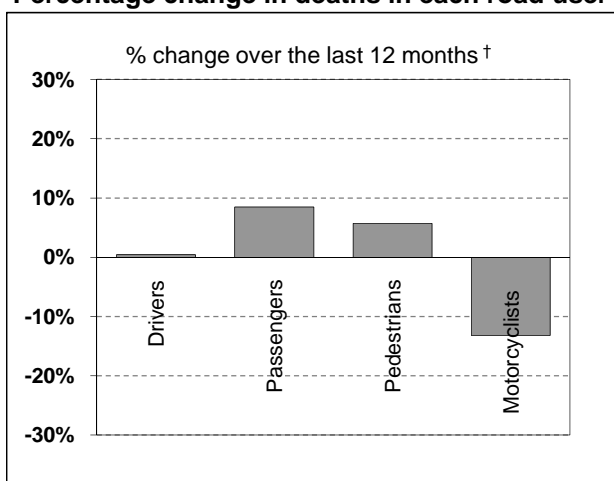
a Includes pillion passengers

b Includes road users not separately specified

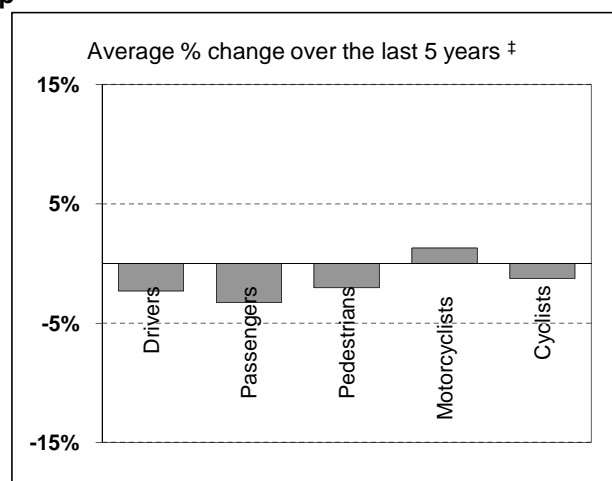
c Includes road users with unstated gender

d Average annual percentage change based on the exponential trend for the last five 12-month periods

Percentage change in deaths in each road user group



† Percentage change between the two 12-month periods ending March 2010 and March 2009.
Cyclists not shown.

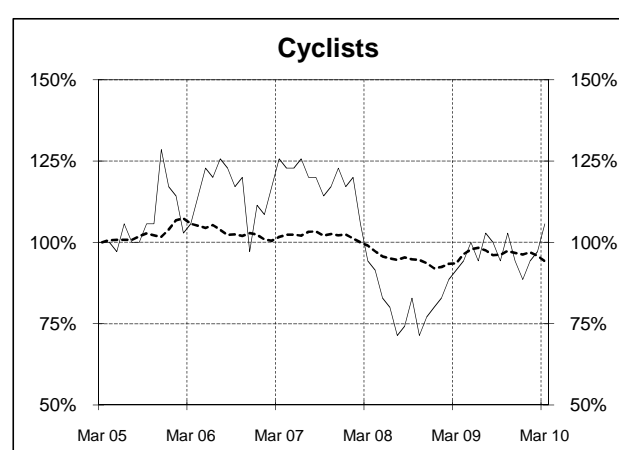
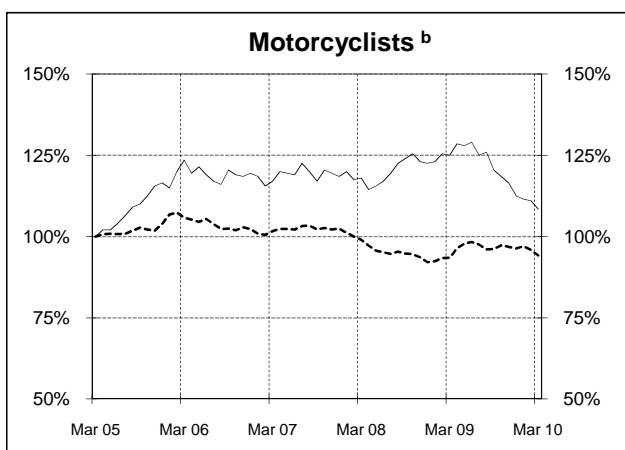
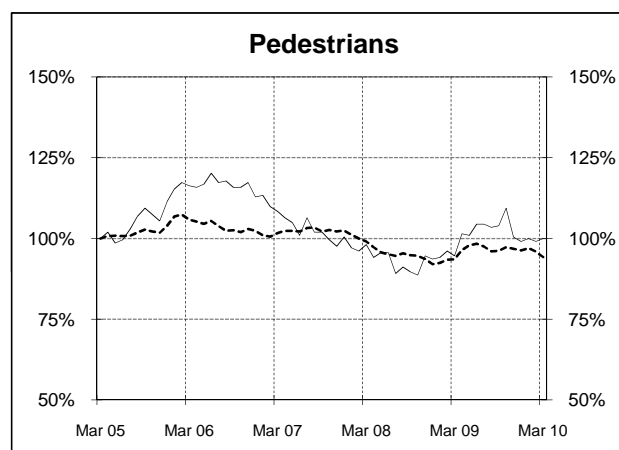
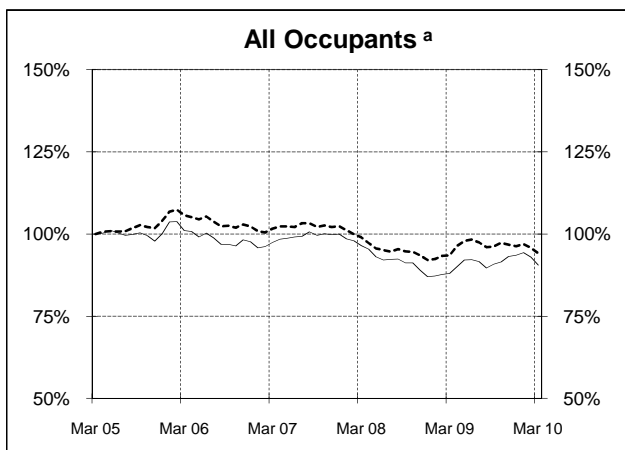
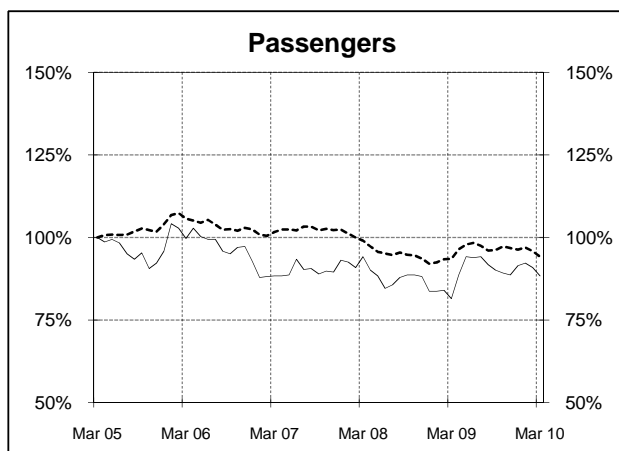
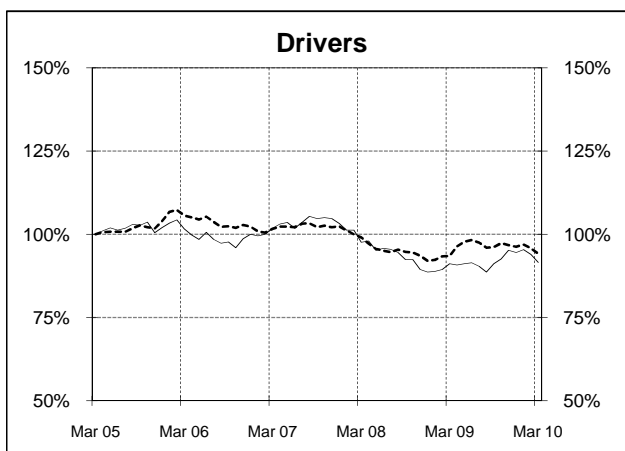
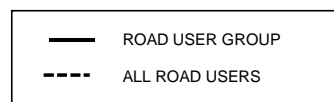


‡ Average annual percentage change based on the exponential trend from the year ending March 2005 to year ending March 2010.

DEATHS IN EACH ROAD USER GROUP - TRENDS

Annual deaths in each road user group - last 5 years

The number shown at each month represents the number of deaths in the preceding 12 months expressed as a percentage of the number of deaths in the 12 months to March 2005.



a Comprises drivers and passengers

b Includes pillion passengers

NUMBER OF FATAL ROAD CRASHES IN EACH STATE / TERRITORY

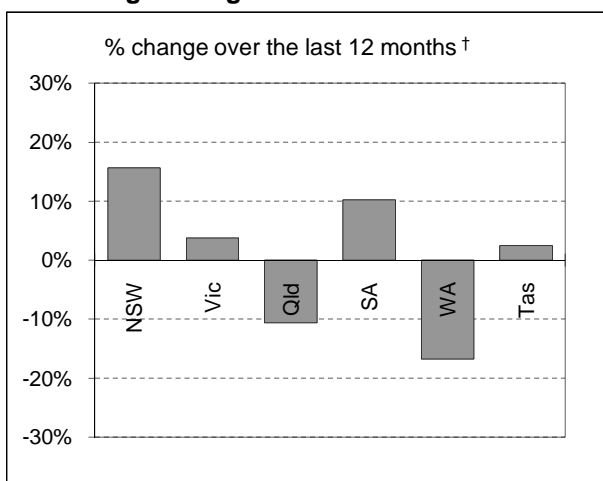
Fatal crashes by State/Territory

for current month, year to date, 12 months ended March, and five year trend.

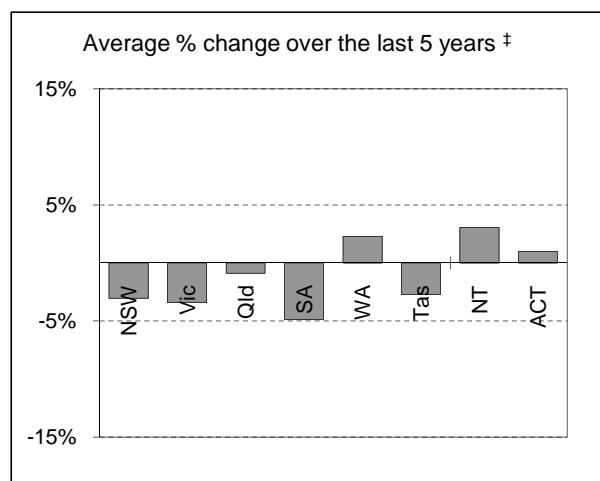
	NSW	Vic	Qld	SA	WA	Tas	NT	ACT	Australia
Current month									
Mar 2010	27	27	15	10	16	4	2	2	103
Mar 2009	38	20	28	12	17	5	2	2	124
% change	-28.9	35.0	-46.4	-16.7	-5.9	-20.0	0.0	0.0	-16.9
Year to date									
Jan 2010 - Mar 2010	98	71	47	33	32	9	7	5	302
Jan 2009 - Mar 2009	93	64	74	29	50	19	4	2	335
% change	5.4	10.9	-36.5	13.8	-36.0	-52.6	75.0	150.0	-9.9
12 months to date									
Apr 2009 - Mar 2010	422	275	269	108	164	42	34	14	1,328
Apr 2008 - Mar 2009	365	265	301	98	197	41	60	14	1,341
% change	15.6	3.8	-10.6	10.2	-16.8	2.4	-43.3	0.0	-1.0
Average annual % change over 5 years^a									
YE March 2005 to YE March 2010	-3.0	-3.4	-0.9	-4.9	2.3	-2.7	3.1	1.0	-2.0

^a Average annual percentage change based on the exponential trend for the last five 12-month periods

Percentage change in fatal crashes in each State



† Percentage change between the two 12-month periods ending March 2010 and March 2009.



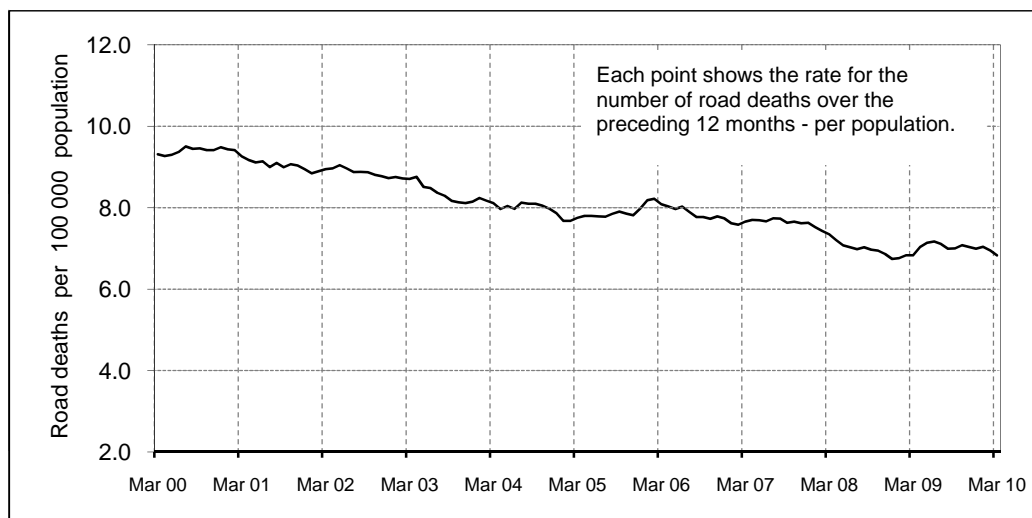
‡ Average annual percentage change based on the exponential trend from the year ending March 2005 to year ending March 2010.

ROAD DEATH RATES

Road deaths per 100,000 population

	NSW	Vic	Qld	SA	WA	Tas	NT	ACT	Australia
12-months to date									
Apr 2009 - Mar 2010	6.6	5.5	6.7	7.7	7.9	10.7	15.1	4.8	6.7
Apr 2008 - Mar 2009	5.5	5.4	7.7	7.0	9.7	8.8	30.8	4.3	6.8
Calendar year									
2009	6.5	5.3	7.5	7.3	8.8	12.7	13.8	3.4	6.9
2004	7.6	6.9	8.0	9.0	9.0	12.0	17.3	2.7	7.9

Australian road deaths per year per 100 000 population - moving 12-monthly data



CHARACTERISTICS OF FATAL CRASHES

Proportion (per cent) of fatal crashes by speed limit, crash type, time of day, and day of week. Two years ended March 2010 and two years ended March 2005

	Speed limit (km/h) ^a			Time of Day	
	Up to 60	65-95	100+	Day	Night ^b
Apr 2008 - Mar 2010	31.9%	23.2%	45.0%	57.3%	42.7%
Apr 2003 - Mar 2005	32.8%	22.7%	44.5%	54.9%	45.1%
	Crash Type			Day of week	
	Pedestrian crash	Other single veh. crash	Other multiple veh. crash	Week day	Week-end ^c
Apr 2008 - Mar 2010	14.5%	47.7%	37.8%	60.1%	39.9%
Apr 2003 - Mar 2005	15.3%	44.4%	40.3%	59.0%	41.0%

^a Excludes ACT

^b 6:00 pm to 5:59 am

^c 6:00 pm Friday to 5:59 am Monday

ROAD DEATHS BY AGE, GENDER AND ROAD USER GROUP

Road deaths by age and gender

for 12 months ended March 2010 and March 2009

	0-16 years	17-20 years	21-25 years	26-39 years	40-59 years	60+ years	All deaths ^a
Males							
Apr 2009 - Mar 2010	59	127	126	263	291	214	1,083
Apr 2008 - Mar 2009	50	136	169	289	255	156	1,055
% change	18.0	-6.6	-25.4	-9.0	14.1	37.2	2.7
Females							
Apr 2009 - Mar 2010	42	44	33	64	102	101	387
Apr 2008 - Mar 2009	33	59	29	74	103	108	406
% change	27.3	-25.4	13.8	-13.5	-1.0	-6.5	-4.7
Persons^b							
Apr 2009 - Mar 2010	105	171	159	327	393	315	1,474
Apr 2008 - Mar 2009	85	195	198	363	358	264	1,463
% change	23.5	-12.3	-19.7	-9.9	9.8	19.3	0.8

a Includes road users with unstated age

b Includes road users with unstated gender

Road deaths by age for each main road user group

	0-16 years	17-20 years	21-25 years	26-39 years	40-59 years	60+ years	All deaths ^a
Occupants^b							
Apr 2009 - Mar 2010	78	137	126	218	241	212	1015
Apr 2008 - Mar 2009	67	150	140	221	231	178	987
% change	16.4	-8.7	-10.0	-1.4	4.3	19.1	2.8
Motorcyclists^c							
Apr 2009 - Mar 2010	3	16	17	71	98	12	217
Apr 2008 - Mar 2009	2	24	39	91	74	20	250
% change	50.0	-33.3	-56.4	-22.0	32.4	-40.0	-13.2
Pedestrians							
Apr 2009 - Mar 2010	22	18	13	34	41	74	203
Apr 2008 - Mar 2009	14	19	16	40	43	60	192
% change	57.1	-5.3	-18.8	-15.0	-4.7	23.3	5.7

a Includes road users with unstated age

b Comprises drivers and passengers

c Includes pillion passengers

TIME SERIES - QUARTERLY SUPPLEMENT

Road deaths by road user group, 1995 to 2009

	<i>Drivers</i>	<i>Passengers</i>	<i>Pedestrians</i>	<i>Motor-cyclists^a</i>	<i>Cyclists</i>	<i>All road users^b</i>
1995	874	491	398	204	48	2,017
1996	869	499	351	193	57	1,970
1997	776	431	328	177	52	1,767
1998	741	468	318	181	44	1,755
1999	820	428	299	176	40	1,764
2000	852	450	287	191	31	1,817
2001	776	407	290	216	46	1,737
2002	785	422	249	224	34	1,715
2003	747	420	232	188	26	1,621
2004	760	362	220	195	43	1,583
2005	775	347	226	233	41	1,627
2006	759	336	229	239	39	1,602
2007	784	337	204	237	41	1,603
2008	673	303	190	245	28	1,441
2009	718	331	201	225	31	1,507

a Includes pillion passengers

b Includes road users not separately specified

Road deaths by State/Territory, 1995 to 2009

	<i>NSW</i>	<i>Vic</i>	<i>Qld</i>	<i>SA</i>	<i>WA</i>	<i>Tas</i>	<i>NT</i>	<i>ACT</i>	<i>Australia</i>
1995	620	418	456	181	209	57	61	15	2,017
1996	581	417	385	181	247	64	72	23	1,970
1997	576	377	360	148	197	32	60	17	1,767
1998	556	390	279	168	223	48	69	22	1,755
1999	577	383	314	151	218	53	49	19	1,764
2000	603	407	317	166	212	43	51	18	1,817
2001	524	444	324	153	165	61	50	16	1,737
2002	561	397	322	154	179	37	55	10	1,715
2003	539	330	310	157	180	41	53	11	1,621
2004	510	343	311	139	178	58	35	9	1,583
2005	508	346	330	148	163	51	55	26	1,627
2006	496	337	335	117	203	55	46	13	1,602
2007	435	332	360	124	235	45	58	14	1,603
2008	374	303	328	99	209	39	75	14	1,441
2009	463	290	331	119	197	64	31	12	1,507

DEATH RATES - QUARTERLY SUPPLEMENT

Road death – Rates by State/Territory

	<i>NSW</i>	<i>Vic</i>	<i>Qld</i>	<i>SA</i>	<i>WA</i>	<i>Tas</i>	<i>NT</i>	<i>ACT</i>	<i>Australia</i>
<i>Per capita^a</i>									
2009	6.52	5.34	7.51	7.33	8.81	12.73	13.79	3.42	6.89
2004	7.60	6.89	7.97	9.02	8.98	12.01	17.32	2.75	7.86
<i>Per registered vehicle^b</i>									
2009	1.01	0.72	1.01	0.98	1.08	1.60	2.41	0.49	0.96
2004	1.26	0.96	1.17	1.27	1.20	1.66	3.30	0.42	1.17

a Annual deaths per 100,000 population: 2008 at June 30 (preliminary data); 2003 at June 30 (revised data) taken from ABS catalogue 3201.0

b Annual deaths per 10,000 registered motor vehicles at 31 March taken from ABS catalogue 9309.0.

DEATHS BY AGE AND ROAD USER GROUP - QUARTERLY SUPPLEMENT

Road deaths by road user group and age

for 12 months ended March 2010, March 2009 and five year trend

	0-16 years	17-20 years	21-25 years	26-39 years	40-59 years	60+ years	All deaths ^d
Drivers							
Apr 2009 - Mar 2010	9	83	85	166	201	151	695
Apr 2008 - Mar 2009	7	90	96	175	191	133	692
% change	28.6	-7.8	-11.5	-5.1	5.2	13.5	0.4
Ave annual % change ^a							
YE Mar 2005 to YE Mar 2010	7.8	-5.6	-4.2	-3.2	0.9	-1.7	-2.3
Passengers							
Apr 2009 - Mar 2010	69	54	41	52	40	61	320
Apr 2008 - Mar 2009	60	60	44	46	40	45	295
% change	15.0	-10.0	-6.8	13.0	0.0	35.6	8.5
Ave annual % change ^a							
YE Mar 2005 to YE Mar 2010	-1.6	-6.1	-1.3	2.4	-8.0	-3.9	-3.3
Pedestrians							
Apr 2009 - Mar 2010	22	18	13	34	41	74	203
Apr 2008 - Mar 2009	14	19	16	40	43	60	192
% change	57.1	-5.3	-18.8	-15.0	-4.7	23.3	5.7
Ave annual % change ^a							
YE Mar 2005 to YE Mar 2010	-5.9	2.9	-2.9	-3.4	1.5	-3.3	-2.0
Motorcyclists^b							
Apr 2009 - Mar 2010	3	16	17	71	98	12	217
Apr 2008 - Mar 2009	2	24	39	91	74	20	250
% change	50.0	-33.3	-56.4	-22.0	32.4	-40.0	-13.2
Ave annual % change ^a							
YE Mar 2005 to YE Mar 2010	-15.9	-4.4	-12.7	-1.5	12.7	13.6	1.3
Cyclists							
Apr 2009 - Mar 2010	2	0	3	4	12	16	37
Apr 2008 - Mar 2009	2	1	3	11	10	5	32
All road users^c							
Apr 2009 - Mar 2010	105	171	159	327	393	315	1,474
Apr 2008 - Mar 2009	85	195	198	363	358	264	1,463
% change	23.5	-12.3	-19.7	-9.9	9.8	19.3	0.8
Ave annual % change ^a							
YE Mar 2005 to YE Mar 2010	-3.6	-5.1	-4.7	-2.3	1.8	-1.7	-2.0

a This represents the average annual exponential change between the annual count of 5-years ago and the current annual count

b Includes pillion passengers

c Includes road users not separately classified

d Includes deaths with unstated age

DEATHS BY STATE / TERRITORY AND ROAD USER - QUARTERLY SUPPLEMENT

Road deaths by road user group and State/Territory
for 12 months ended March 2010, March 2009 and five year trend

	NSW	Vic	Qld	SA	WA	Tas	NT	ACT	Australia
Drivers									
Apr 2009 - Mar 2010	217	139	138	65	85	24	20	7	695
Apr 2008 - Mar 2009	196	148	145	54	103	22	21	3	692
% change	10.7	-6.1	-4.8	20.4	-17.5	9.1	-4.8	-	0.4
Ave annual % change ^a									
Mar 2005 to Mar 2010	-3.0	-3.9	-1.1	-5.7	2.0	-2.1	3.2	0.4	-2.3
Passengers									
Apr 2009 - Mar 2010	101	54	66	33	39	17	6	4	320
Apr 2008 - Mar 2009	76	44	71	23	40	11	24	6	295
% change	32.9	22.7	-7.0	43.5	-2.5	54.5	-75.0	-	8.5
Ave annual % change ^a									
Mar 2005 to Mar 2010	-4.4	-9.4	-1.0	-1.1	-2.0	0.4	-1.6	-	-3.3
Pedestrians									
Apr 2009 - Mar 2010	72	52	36	6	25	4	6	2	203
Apr 2008 - Mar 2009	47	52	33	17	24	2	14	3	192
% change	53.2	0.0	9.1	-64.7	4.2	100.0	-57.1	-	5.7
Ave annual % change ^a									
Mar 2005 to Mar 2010	-7.5	1.3	0.6	-5.4	0.9	-0.8	6.6	-4.3	-2.0
Motorcyclists ^b									
Apr 2009 - Mar 2010	69	42	51	18	26	7	1	3	217
Apr 2008 - Mar 2009	60	37	74	17	42	8	9	3	250
% change	15.0	13.5	-31.1	5.9	-38.1	-12.5	-88.9	0.0	-13.2
Ave annual % change ^a									
Mar 2005 to Mar 2010	1.0	-1.5	0.4	-2.3	10.7	1.2	-	-8.1	1.3
Cyclists									
Apr 2009 - Mar 2010	12	10	7	3	2	2	0	1	37
Apr 2008 - Mar 2009	9	9	9	1	3	1	0	0	32
All road users ^c									
Apr 2009 - Mar 2010	471	297	298	125	178	54	34	17	1,474
Apr 2008 - Mar 2009	389	290	332	112	213	44	68	15	1,463
% change	21.1	2.4	-10.2	11.6	-16.4	22.7	-50.0	13.3	0.8
Ave annual % change ^a									
Mar 2005 to Mar 2010	-3.3	-3.8	-0.5	-4.4	1.9	-1.1	2.7	3.8	-2.0

^a This represents the average annual exponential change between the annual count of 5-years ago and the current annual count

^b Includes pillion passengers

^c Includes road users not separately classified

Appendix

1. Definition

The road safety agencies in each jurisdiction use detailed criteria to define road crashes and road deaths. Briefly, a death is classified as resulting from a road crash if the crash occurred on a public road, is unintentional and the death occurred within 30 days from injuries sustained in the crash.

Road deaths from recent months are preliminary and subject to revision.

2. Other sources for the tables in this bulletin

The underlying database used to produce this bulletin is available for online querying and data extraction at

http://www.infrastructure.gov.au/roads/safety/road_fatality_statistics/fatal_road_crash_database.aspx

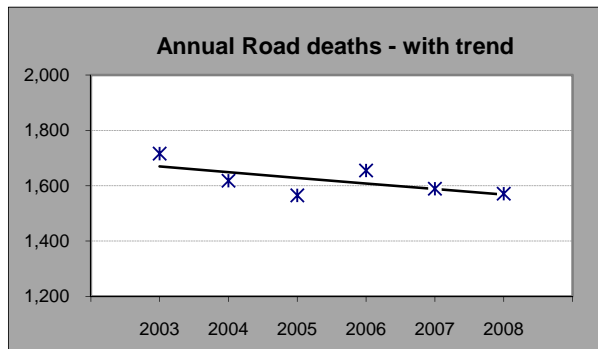
3. Estimation of five year trends

In this bulletin, the figures for the 'Average annual per cent change over 5 years' are calculated by fitting an exponential trend line to the last six data points (years 0 to 5).

The Excel function `—logest—` performs the fit. The resulting trend line represents a constant annual percent change over the period. An example is given below :

Example : Average Annual Change in Road Deaths

Road deaths - year ended March			% Change
	A	B	
0	2003	1,716	
1	2004	1,618	-5.7%
2	2005	1,565	-3.3%
3	2006	1,655	5.8%
4	2007	1,589	-4.0%
5	2008	1,571	-1.1%
Average =			-1.2%



Average annual growth = $\text{Index}(\text{Logest}(B1:B6, A1:A6), 1) - 1 = -1.2\%$