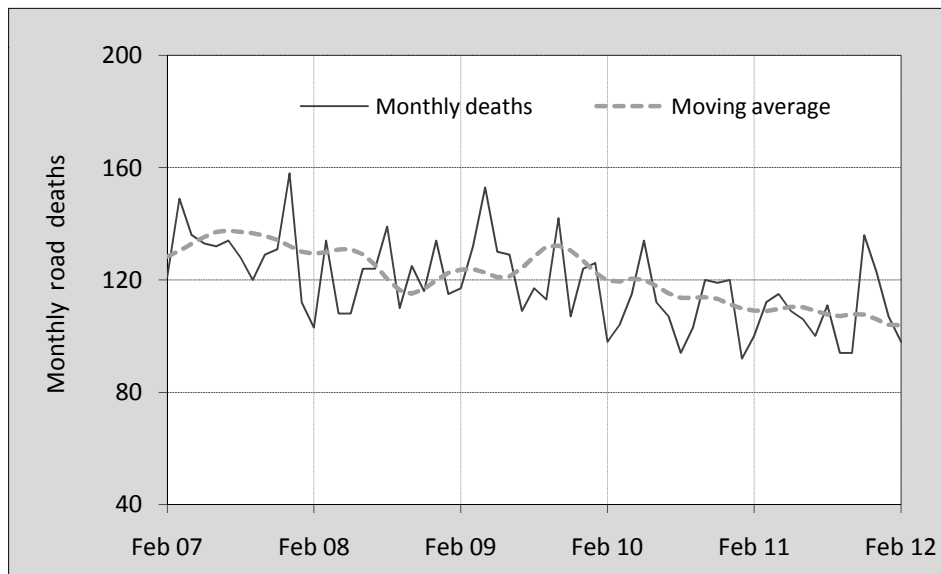




### This month's key figures

- There was a total of 98 road deaths in February 2012. Compared to the average for the month of February over the last five years, this is a 9.1 per cent decrease.
- During the 12 months ended February 2012 there were 1,305 deaths. This is a 1.1 per cent decrease from the 12-monthly period ending February 2011.
- The rate of annual deaths per 100 000 population presently stands at 5.8. This is a 2.3 per cent decrease from the 12-monthly period ending February 2011.

### Monthly Australian road deaths — last five years, with trend



#### Data Sources

Data are obtained from

- Roads and Maritime Services, NSW
- Vicroads
- Department of Transport and Main Roads, Queensland
- Department for Transport, Energy and Infrastructure, S.A.
- Western Australia Police
- Department of Infrastructure, Energy and Resources, Tasmania
- Department of Lands and Planning, Northern Territory
- Department of Territory and Municipal Services, ACT
- Australian Bureau of Statistics (3101.0)

#### Inquiries

For further information about data in this bulletin, contact:

Bureau of Infrastructure, Transport and Regional Economics

Web : < [www.bitre.gov.au](http://www.bitre.gov.au) >

Email : [roadsafety@infrastructure.gov.au](mailto:roadsafety@infrastructure.gov.au)

Road deaths from recent months are preliminary and subject to revision.

© Copyright Commonwealth of Australia

## I. Current month and year to date

### Deaths by jurisdiction

Current month	NSW	Vic	Qld	SA	WA	Tas	NT	ACT	Australia
Feb 2011	30	20	16	9	20	3	2	0	100
Feb 2012	27	24	17	9	16	3	2	0	98
Per cent change	-10.0	20.0	6.3	0.0	-20.0	0.0	0.0	0.0	-2.0

Year to date	NSW	Vic	Qld	SA	WA	Tas	NT	ACT	Australia
Jan to Feb 2011	58	38	33	21	32	6	2	2	192
Jan to Feb 2012	58	54	43	15	25	5	5	0	205
Per cent change	0.0	42.1	30.3	-28.6	-21.9	-16.7	150.0	-100.0	6.8

## 2. Yearly deaths — last five 12 monthly periods

### Deaths by jurisdiction

12 months ended Feb	NSW	Vic	Qld	SA	WA	Tas	NT	ACT	Australia
2008	428	334	355	117	215	44	57	15	1,565
2009	377	304	329	106	210	46	70	12	1,454
2010	470	292	313	128	174	54	34	15	1,480
2011	386	275	247	109	209	31	45	18	1,320
2012	377	303	279	97	173	25	47	4	1,305
Latest per cent change	-2.3	10.2	13.0	-11.0	-17.2	-19.4	4.4	-77.8	-1.1
Average change per year (per cent)	-2.3	-2.9	-7.4	-3.4	-4.3	-14.1	-7.9	-20.1	-4.5

### Deaths by road user

12 months ended Feb	Driver	Passenger	Pedestrian	Motorcyclist	Cyclist	Total <sup>a</sup>
2008	770	328	195	235	37	1,565
2009	676	302	192	251	31	1,454
2010	702	329	195	220	33	1,480
2011	614	277	166	225	37	1,320
2012	587	289	194	198	35	1,305
Latest per cent change	-4.4	4.3	16.9	-12.0	-5.4	-1.1
Average change per year (per cent)	-6.2	-3.3	-1.5	-4.4	0.7	-4.5

<sup>a</sup> Includes deaths of unknown road user type

## Deaths by age-group (years)

<b>12 months ended Feb</b>	<i>0 to 16</i>	<i>17 to 25</i>	<i>26 to 39</i>	<i>40 to 59</i>	<i>60 to 69</i>	<i>≥ 70</i>	<i>Total<sup>a</sup></i>
2008	96	387	397	386	100	198	1,565
2009	89	384	354	360	97	170	1,454
2010	106	347	345	380	110	191	1,480
2011	68	317	289	366	114	166	1,320
2012	94	295	300	314	113	188	1,305
<i>Latest per cent change</i>	38.2	-6.9	3.8	-14.2	-0.9	13.3	-1.1
<i>Average change per year (per cent)</i>	-3.1	-7.1	-7.3	-3.9	4.1	-1.3	-4.5

a Includes deaths to persons with age not recorded.

## Deaths by gender

<b>12 months ended Feb</b>	<i>Males</i>	<i>Females</i>	<i>Total<sup>b</sup></i>
2008	1,150	415	1,565
2009	1,052	400	1,454
2010	1,080	397	1,480
2011	950	369	1,320
2012	956	346	1,305
<i>Latest per cent change</i>	0.6	-6.2	-1.1
<i>Average change per year (per cent)</i>	-4.6	-4.3	-4.5

b Includes deaths to persons with gender not recorded.

## 3. Annual deaths per 100 000 population

### By jurisdiction

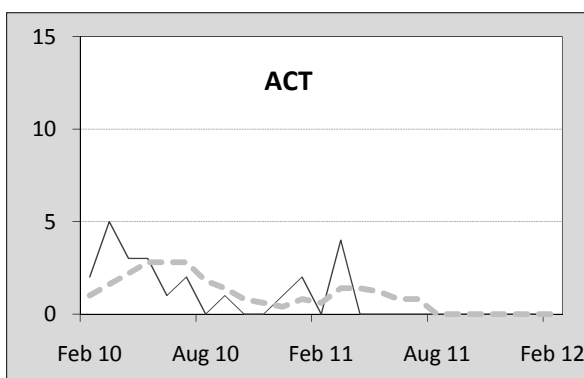
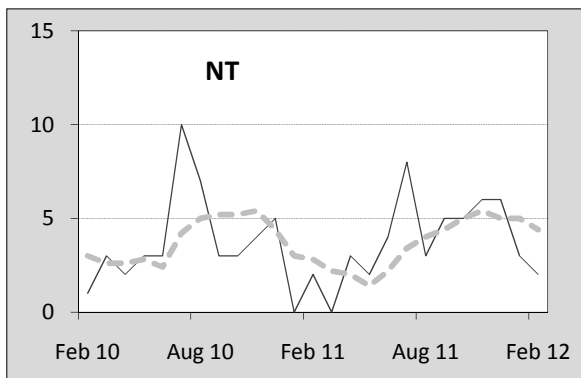
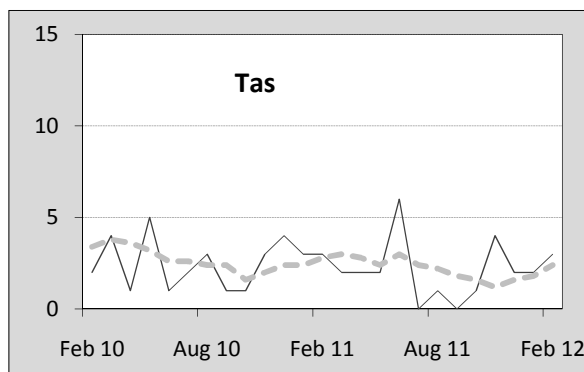
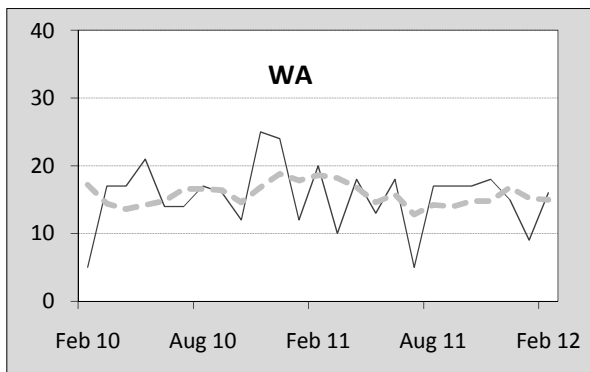
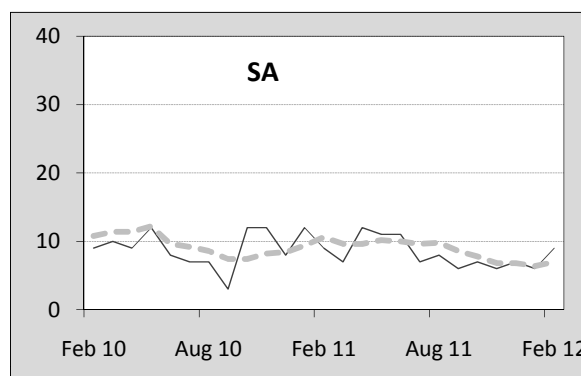
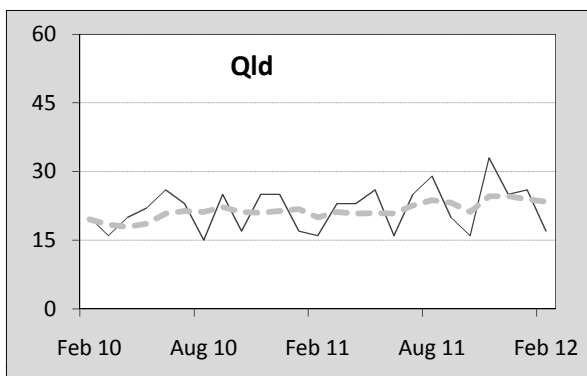
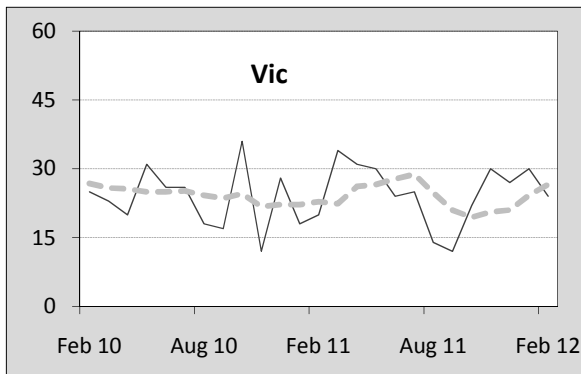
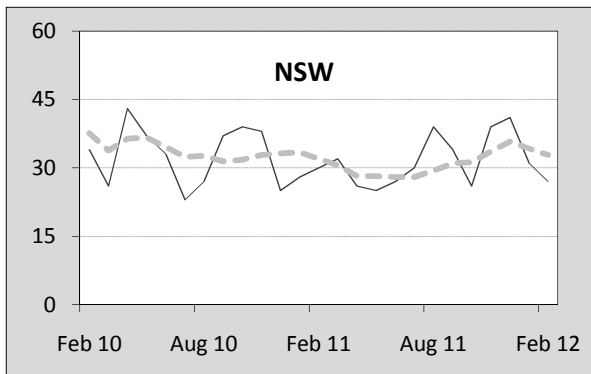
<b>12 months ended Feb</b>	<i>NSW</i>	<i>Vic</i>	<i>Qld</i>	<i>SA</i>	<i>WA</i>	<i>Tas</i>	<i>NT</i>	<i>ACT</i>	<i>Australia</i>
2008	6.18	6.38	8.43	7.37	10.13	8.91	26.43	4.39	7.40
2009	5.36	5.68	7.60	6.59	9.59	9.22	31.61	3.46	6.74
2010	6.58	5.34	7.05	7.86	7.72	10.71	15.42	4.25	6.73
2011	5.33	4.95	5.47	6.62	9.09	6.10	19.60	5.01	5.91
2012	5.16	5.39	6.07	5.85	7.38	4.89	20.36	1.10	5.77
<i>Latest per cent change</i>	-3.2	8.9	11.1	-11.7	-18.9	-19.8	3.9	-78.1	-2.3

<b>Calendar year</b>	<i>NSW</i>	<i>Vic</i>	<i>Qld</i>	<i>SA</i>	<i>WA</i>	<i>Tas</i>	<i>NT</i>	<i>ACT</i>	<i>Australia</i>
2007	6.30	6.36	8.58	7.82	11.12	9.12	27.00	4.10	7.61
2008	5.33	5.69	7.61	6.17	9.42	7.83	34.01	4.04	6.68
2009	6.36	5.32	7.48	7.33	8.47	12.52	13.70	3.41	6.78
2010	5.61	5.20	5.53	7.18	8.43	6.11	21.37	5.30	6.06
2011	5.16	5.10	5.87	6.22	7.67	5.09	19.12	1.64	5.71
<i>Latest per cent change</i>	-8.0	-1.8	6.3	-13.4	-9.0	-16.7	-10.6	-69.0	-5.8

# Monthly deaths by jurisdiction — last 24 months

— raw  
 - - - smoothed (unweighted 5-point moving average)



## 5. Characteristics of fatal crashes

12 months ended Feb	Crashtype <sup>a</sup>			Posted speed limit				Total <sup>b</sup>
	Single	Multiple	Pedestrian	0 to 60	70 to 90	100	≥ 110	
2008	656	565	193	424	306	483	164	1,414
2009	635	504	191	420	313	413	156	1,330
2010	643	499	189	397	302	435	168	1,331
2011	532	521	164	352	269	407	167	1,217
2012	532	461	190	352	239	397	139	1,183
<i>Average change per year (per cent)</i>	-5.8	-3.7	-1.8	-5.3	-6.3	-4.0	-2.6	-4.4

12 months ended Feb	Day of week <sup>c</sup>		Time of Day <sup>d</sup>	
	Weekday	Weekend	Day	Night
2008	870	544	813	600
2009	766	564	733	595
2010	818	513	774	557
2011	704	513	725	492
2012	706	477	722	461
<i>Average change per year (per cent)</i>	-4.9	-3.5	-2.5	-6.9

- a 'Single' and 'Multiple' refer to the the number of vehicles involved in a fatal crash where there is no pedestrian killed.
- b Includes crashes where speed limit is unknown
- c 'Weekday' refers to 6am Monday through to 5:59pm Friday.
- d 'Day' refers to 6am through to 5:59 pm.

## Appendix

### Definition

The road safety agencies in each jurisdiction use detailed criteria to define road crashes and road deaths. Briefly, a death is classified as resulting from a road crash if the crash occurred on a public road, is unintentional and the death occurred within 30 days from injuries sustained in the crash.

### Population rates

Rates per population are based on the deaths to the current 12 monthly period, and the population at the midpoint of the period. The population at midpoints are interpolated if necessary.

### Average (%) change per year

Calculated by fitting an exponential curve through the five data points, and quoting the constant (annual) change of this curve.

### Other sources for the tables in this bulletin

The underlying database used to produce this bulletin — *the Australian Road Deaths Database* is available for online querying and data extraction at <http://www.bitre.gov.au/info.aspx?NodeId=167> >  
Road deaths from recent months are preliminary and subject to revision.