



Australian Government

Department of Transport and Regional Services

Bureau of Transport and Regional Economics



otre

AVIATION STATISTICS

International Scheduled Air Transport 2006-07

IAA 124

© Commonwealth of Australia

Canberra

November 2007

ISSN 1324-5074

This work is copyright and the data contained in this publication should not be reproduced or used in any form without acknowledgement.

Inquiries

Should you require additional information about the statistics contained in this publication, please contact Mr Mano Manoranjan in Canberra by telephone (02) 6274 7790 or by facsimile (02) 6274 7727 or write to:

Aviation Statistics, Bureau of Transport and Regional Economics
Department of Transport and Regional Services
GPO Box 594
Canberra ACT 2601

Electronic mail: AVSTATS@dotars.gov.au

Web site: <http://www.btre.gov.au/info.aspx?NodeId=49>

CONTENTS

Explanatory Notes iv-vi

Data Issues and Airlines Commencing/Withdrawing Services..... vii

Highlights viii-xv

Detailed Annual Tables

- 1. Scheduled International Air Traffic to and from Australia 1-3
- 2. Scheduled Operator Market Shares and Growth..... 4-8
- 3. Airline Passenger Capacity and Utilisation to and from Australia by Operator 9-11
- 4. Australian International Airport Scheduled Traffic and Aircraft Movements12
- 5. Scheduled International Passengers and Freight by City Pairs 13-19
- 6. International Airlines Own Stopover Revenue Passengers, Australian City Pairs20
- 7. Total Aircraft Movements at Australian International Airports by Aircraft Types21

EXPLANATORY NOTES

INTRODUCTION

1. This publication continues the series of publications on a financial year basis presenting statistical information on the scheduled operations of international airlines operating into/out of Australia.
2. The figures in this publication were obtained from reports submitted by scheduled international carriers and are the best available at the time of publication.

COVERAGE

3. These statistics show uplift/discharge data – These data detail, by direction, the revenue traffic between the actual points of uplift and discharge within each flight, aggregated for all flights within the period. It shows the movement of traffic between two airports not necessarily directly connected but within the same flight number. Typically, flight numbers change when an aircraft reaches its home country. This means that uplift/discharge data for the port in the operator's home country are likely to be overstated by traffic whose origin/destination point is beyond that port. For example, uplift/discharge traffic reported in this publication as Singapore could include traffic whose origin/destination is Europe.
4. These statistics cover revenue traffic carried by the operators of scheduled regular public international air transport services only and do not include charter traffic.
5. Some airlines (generally, dedicated freighter operators) operate scheduled services into Australia but operate non-scheduled services out of Australia and therefore outbound activity is not recorded in this data collection.

PRODUCTION AND INTERPRETATION

6. Tables 1 and 2 show the country of the relevant uplift or discharge port served by that airline. For example, traffic uplifted/discharged between Sydney and Singapore by British Airways would be shown as Singapore traffic in Tables 1 and 2.
7. Table 3 shows figures for the country of service (or route) for each airline and therefore may not equate to the data in Tables 1 and 2. For example, the British Airways UK service identified in Table 3 could include passengers uplifted or discharged in Singapore or Thailand as well as the UK; these passengers would be shown individually under those countries in Tables 1 and 2. The difference in treatment of data between Tables 1 and 2 and Table 3 is necessary in order to work out a meaningful Seat Utilisation figure for Table 3.

Figures shown in Table 3 may include total traffic into and out of Australia for airlines that fly through Australia (also necessary in order to work out a meaningful Seat Utilisation figure). Therefore, figures in Table 3 may not equate to figures in Tables 1 and 2. For example, passengers carried by Qantas Airways from New Zealand via Australia to the UK will be included in Table 3 but will not be included in Tables 1 or 2 as these passengers were not uplifted/discharged in Australia.

8. Table 5 – shows uplift/discharge passenger and freight data for city pairs with same flight number international flight connections.
9. Where figures have been rounded, discrepancies may occur between sums of component items and totals, and in percentage changes which are derived from figures prior to rounding.
10. Published figures may be revised where figures missing at the time of publication are received or misreporting/miscalculation necessitates revisions.

DEFINITIONS

11. The following definitions have been used in this publication:

- (a) Aircraft Movement: A landing or a take off.
- (b) Freight: The aggregate of all revenue freight uplifted.
- (c) Inbound: Inbound to Australia/Australian international airport.
- (d) Mail: The aggregate of all mail uplifted.
- (e) Outbound: Outbound from Australia/Australian international airport.
- (f) Revenue Passengers: please refer to paragraph 12.
- (g) Seat Utilisation: The ratio of passengers carried to seats available, expressed as a percentage.
- (h) Seats Available: Generally based on standard aircraft configuration, the aggregate of seats available on all flights operated over a particular service.
- (i) Services: Scheduled flights over authorised routes which are listed according to the main ports involved.

COMPARABILITY OF DATA OVER TIME

12. Revenue Passengers:

- For July 2000 and onwards: All passengers paying any fare (frequent flyer redemption passengers are regarded as revenue passengers). In most cases, Revenue Passengers will now include all passengers excluding Free Of Charge passengers and positioning crew.
- To December 1999: The aggregate of all passengers paying 25% or more of the standard air fare (as defined by ICAO).
- January 2000 to June 2000: Transition period.

The Revenue Passenger definition change could result in approximately a three per cent increase in passenger numbers over a full period (month or year).

13. Country and City data – reporting of Uplift/Discharge data by Qantas Airways:

- Prior to January 2003: Uplift/Discharge within Qantas Airways' international network.
- For January 2003 and onwards: Uplift/Discharge within flight number – as per the standard definition.

For example, what was previously reported as Adelaide to London (no direct services between these two cities) will now be reported as either Adelaide to Singapore or Melbourne/Sydney to London.

This change has been introduced in order to make the data comparable across all airlines operating services to/from Australia.

The effect of this change – comparing data under the two methods of reporting:

- Country of Port data (Tables 1 & 2) – There will be a shift in traffic to countries such as Singapore which are used as hubs and away from countries such as France, Germany and Italy which previously received traffic channelled through hubs. The total volume of traffic is not affected.
- Country of Service data (Table 3) – no change, as the Uplift/Discharge definition is not applicable to classifying the country of service.
- Australian International Airports (Table 4) – there may be a shift of traffic to the major airports.
- City Pairs (Table 5) – There will be a shift in traffic to cities such as Singapore which are used as hubs and away from cities such as Paris, Frankfurt and Rome which previously received traffic channelled through hubs. The total volume of traffic is not affected. Prior to the change, statistics reported for city pairs without “same flight number” international flight connections mainly reflected carriage on interconnecting international services by Qantas Airways. That traffic should have been interpreted as increasing the volume of traffic between the primary international ports rather than as an indicator of traffic volumes between ports without “same flight number” international flight connections. It should be noted however, that there was no double counting of traffic.

14. Country of Service classification by Qantas Airways:

- For July 2002 and onwards: based on the foreign country where same flight number services commence or cease – as per the standard definition. For example, Sydney-Denpasar-Singapore services would be classified as Country of Service = Singapore.
- Prior to July 2002: based on Qantas classification – this mainly affected Indonesia and Singapore Countries of Service. For example, Sydney-Denpasar-Singapore services were classified as Country of Service = Indonesia.

15. Airline data – Reporting of code share services:

Reporting of traffic split by airline code for code share arrangements was discontinued as of June 2000. For July 2000 and onwards, ALL traffic carried is reported under the operating airline regardless of code share arrangements.

Monthly airline market share figures for July 2001 onwards will be comparable with the same month in the previous year. However, these figures may not be comparable with monthly data prior to July 2000.

SYMBOLS AND OTHER USAGE

- nil or zero
- .. not applicable

INDEMNITY STATEMENT

The Bureau of Transport and Regional Economics has taken due care in preparing the information contained in this publication. However, noting that data have been provided by third parties, the Commonwealth gives no warranty as to the accuracy, reliability, fitness for purpose, or otherwise of the information.

DATA ISSUES

Air Paradise International	No data received for November 2005 and missing data for Adelaide and Melbourne for September 2005. Service ceased November 2005.
Air Vanuatu	Traffic carried under code share arrangements may not be included for July 2000 to June 2006. Data under review for April 2007 to June 2007.
Austrian Airlines/Lauda Air	No outbound freight data for September 2000 onwards. No inbound freight data for April 2001 onwards. Service ceased March 2007.
Jetstar	Freight data for services to/from Singapore is not included.
Polar Air Cargo	No data received for March 2003 and onwards. Service ceased October 2005.
Polynesian Airlines	Data not received for August, September and October 2005. Service ceased October 2005.
Value Air	Data not received for September and October 2005. Service ceased October 2005.
Vietnam Airlines	No data received for inbound operations to Sydney for August 2002 to May 2004, July 2004 to November 2004, January 2005 to March 2005 and May 2005. Data for Outbound operations have been received for July 2003 onwards.

AIRLINES COMMENCING/WITHDRAWING SERVICES DURING 2006-07

Commencing:

Etihad Airways

JALways (Tokyo/Sydney services previously operated by Japan Airlines)

Withdrawing:

Austrian Airlines

Gulf Air

Transair

HIGHLIGHTS – YEAR ENDED JUNE 2007

- Fifty-three international scheduled airlines operated services to/from Australia during the year (includes six dedicated freight airlines but excludes airlines operating only via code share arrangements).
- International scheduled passenger traffic in 2006-07 was 22.138 million compared to 21.097 million in 2005-06 – an increase of 4.9%.
- Chart I shows total passenger traffic for the years 1996-07 to 2006-07. Over this period, 2001-02 and 2002-03 were the only years that recorded a decrease in traffic compared to the previous year. Passenger traffic in 2001-02 was affected by the terrorist attacks on the USA in September 2001 and the collapse of Ansett International (also in September 2001). Passenger traffic in 2002-03 was affected by the SARS crisis (April, May and June 2003 in particular) and the war in Iraq.
- Following the two years of negative growth, each month since September 2003 has recorded the highest level of passenger traffic when compared to the same month in any previous year with the exception of March 2006 and August 2006. As a result of this, 2003-04, 2004-05 and 2005-06 were record years and 2006-07 has recorded the highest level of passenger traffic ever carried in a financial year. Chart II compares monthly passenger traffic for 2006-07 with monthly passenger traffic for 2005-06.
- **Airline shares:** Chart III shows the airline market shares in terms of passenger carriage for the top ten airlines for 1996-07, 2001-02 and 2006-07. In the latest year, Qantas Airways had the largest share of the market with 28.3% followed by Singapore Airlines with 11.4%, Air New Zealand with 9.1%, Emirates with 7.1% and Malaysia Airlines with 5.0%.
- Compared to 1996-07, Qantas Airways' share has decreased by 11.1 percentage points, Singapore Airlines' share has increased by 4.8 percentage points, Air New Zealand's share has decreased by 1.1 percentage points, Emirates' share has increased by 6.8 percentage points (commenced operations to/from Australia in June 1996) and Malaysia Airlines' share has increased by 0.9 percentage points. The decrease in share for the Qantas group (Qantas and Jetstar in 2006-07 compared to Qantas in 1996-07) was 8.0 percentage points. The Air New Zealand group's (Air New Zealand and Freedom Air) share has decreased by 0.1 percentage point over the same period.
- **Australian airline share:** The share of passenger traffic accounted for by Australian designated airlines has decreased from 43.7% in 1996-07 (Qantas Airways, Ansett International and National Jet Systems) to 35.2% in 2001-02 (Qantas Airways and Ansett International) and to 32.6% in 2006-07 (Qantas Airways, Jetstar and Pacific Blue's operations to Fiji, Tonga, Vanuatu and some New Zealand services).
- **Low Cost Carrier (LCC) share:** The share of passenger traffic accounted for by LCCs has increased strongly over the last few years. In 2006-07, Freedom Air International, Jetstar, Pacific Blue, Polynesian Blue and Tiger Airways together accounted for 7.8%. This compares to the LCC share of 5.4% in 2005-06, 4.4% in 2004-05 and 3.4% in 2003-04.
- **Freight:** International scheduled air freight traffic in 2006-07 increased by 3.8% over 2005-06 to 753 945 tonnes. Inbound freight traffic has increased by 4.4% and outbound freight traffic has increased by 3.1%.
- **Dedicated freighters:** In 2006-07, scheduled dedicated freighter operations accounted for 28.9% of scheduled inbound air freight to Australia, 12.9% of scheduled outbound air freight from Australia and 22.4% of total scheduled air freight. Note that some freighters do

not pick up freight in Australia – this accounts for the difference in inbound and outbound percentages. There are some smaller scheduled dedicated freighter operators who are not covered in these figures.

- **Hubs for passenger traffic:** Table VI on page xiii shows all passengers carried between Australia and the top fifteen international cities with non-stop air service connections. Singapore accounted for the largest number of passenger movements with 21.1% of the total.
- Total non-stop passenger movements between Australia and Singapore were 4.679 million, total uplift/discharge passenger movements were 3.801 million and total transit passenger movements on “same flight number” services were 0.884 million. By comparison, total non-stop passenger movements between Australia and Dubai were 0.526 million and total uplift/discharge passenger movements were 0.993 million with the difference of 0.467 million passenger movements being those carried via either Singapore or Bangkok on “same flight number” services.
- **Transit passengers at hubs:** Table VII on page xiii shows the transit passenger traffic carried via international cities on “same flight number” services. In 2006-07, there were 2.059 million transit passenger movements (9.3% of total passenger movements to/from Australia). Singapore accounted for 43.0% of this transit total followed by Bangkok with 17.8%, Hong Kong with 10.5%, Auckland with 8.5%, Honolulu with 4.6% and Kuala Lumpur with 4.3%. Together, these six cities accounted for 88.6% of the transit traffic. Other transit traffic mainly covered movements from one city to another city in the same country. New York via Los Angeles for example.
- The information on Traffic On Board and Transits is derived from the uplift/discharge data used to produce the main Tables in this publication.
- Page xiv is a diagrammatic representation of passenger movements by region. The region is based on international cities with non-stop air service connections with Australia. In 2006-07, 38.4% of the 22.138 million passenger movements to/from Australia were either to/from or via South-East Asia. New Zealand had 23.5% of all passenger movements followed by North-East Asia with 21.3%.
- Page xv shows the operation of “same flight number” services beyond the non-stop point to/from Australia. Europe via South-East Asia accounted for the majority of the beyond passenger movements with 784 863 followed by Middle-East via South-East Asia with 554 216. Note that these beyond movements do not take account of passengers whose travel to/from Australia involves a change in flight number at the non-stop point to/from Australia.

YEAR ENDED JUNE 2007

Chart I Total International Passengers Carried (millions) - Years ended June 1997 to 2007

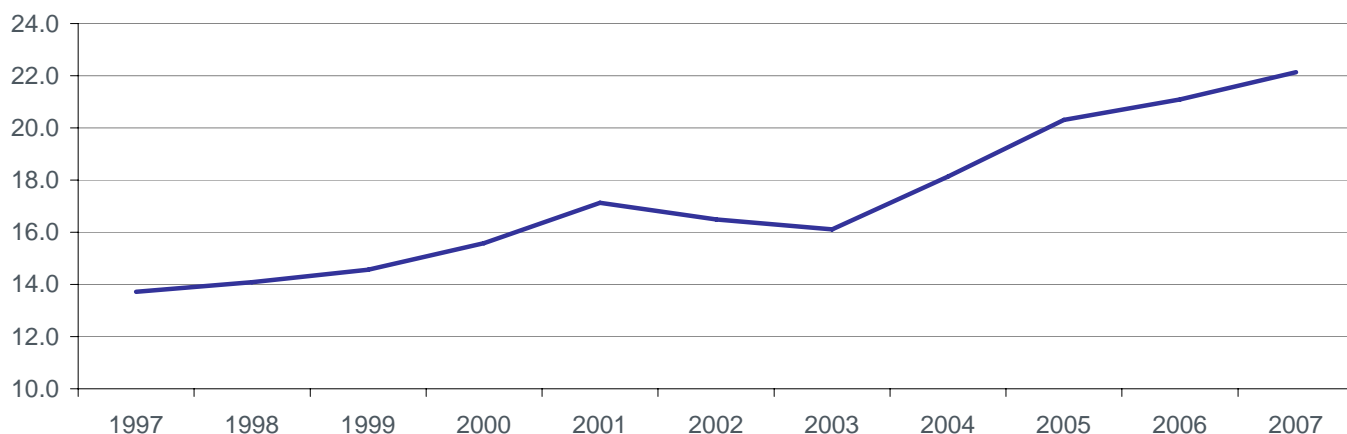


Chart II Total International Passengers Carried (millions) - By Month

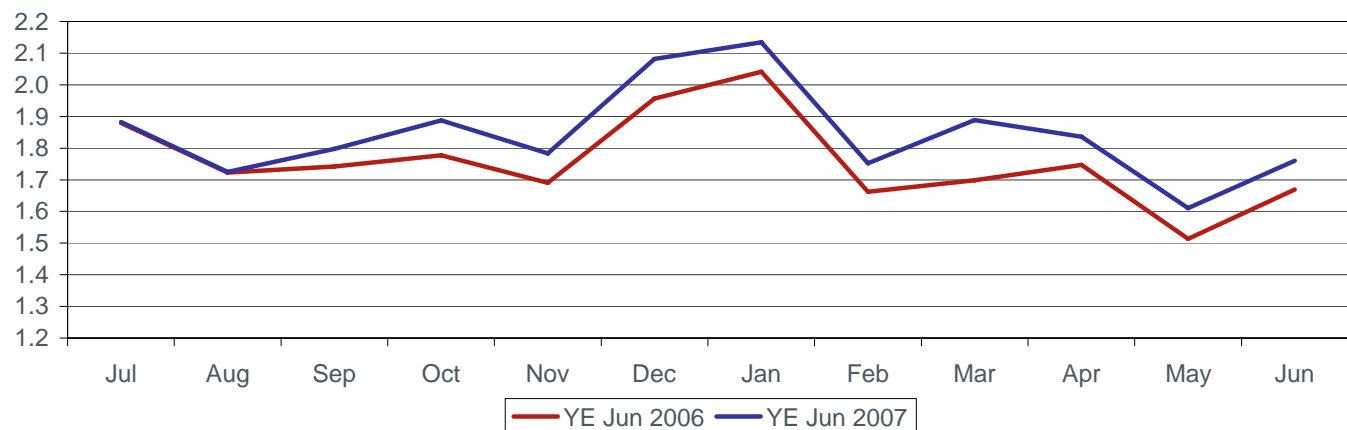


Table I International Passengers by Uplift/Discharge City Pairs (a)

Foreign Port	Australian Port	Year ended June 2005	Year ended June 2006	Year ended June 2007	% of Total	% Change 2007/06
Auckland	Sydney	1 257 073	1 215 552	1 210 628	5.5%	-0.4%
Singapore	Sydney	946 667	957 168	996 382	4.5%	4.1%
Hong Kong	Sydney	681 311	825 890	892 307	4.0%	8.0%
Singapore	Perth	764 209	802 753	870 674	3.9%	8.5%
Singapore	Melbourne	765 302	818 703	844 595	3.8%	3.2%
Auckland	Brisbane	759 193	754 473	797 323	3.6%	5.7%
Singapore	Brisbane	644 372	677 138	696 020	3.1%	2.8%
Auckland	Melbourne	648 876	655 075	673 526	3.0%	2.8%
Los Angeles	Sydney	636 037	648 059	622 743	2.8%	-3.9%
Bangkok	Sydney	467 765	520 779	593 926	2.7%	14.0%
Top 10 City Pairs		7 570 805	7 875 590	8 198 124	37.0%	4.1%
Other City Pairs		12 738 928	13 221 361	13 939 643	63.0%	5.4%
ALL CITY PAIRS		20 309 733	21 096 951	22 137 767	100.0%	4.9%

Table II International Freight (tonnes) by Uplift/Discharge City Pairs (a)

Foreign Port	Australian Port	Year ended June 2005	Year ended June 2006	Year ended June 2007	% of Total	% Change 2007/06
Auckland	Sydney	59 503	61 270	59 798	7.9%	-2.4%
Singapore	Melbourne	48 754	53 566	55 134	7.3%	2.9%
Hong Kong	Sydney	38 377	43 835	44 608	5.9%	1.8%
Singapore	Sydney	37 943	35 833	35 885	4.8%	0.1%
Singapore	Perth	29 589	30 763	33 351	4.4%	8.4%
Auckland	Melbourne	35 589	33 645	32 672	4.3%	-2.9%
Hong Kong	Melbourne	33 382	32 982	29 808	4.0%	-9.6%
Los Angeles	Sydney	27 036	28 308	24 987	3.3%	-11.7%
Kuala Lumpur	Sydney	13 104	14 421	24 538	3.3%	70.2%
Singapore	Brisbane	19 803	22 813	24 006	3.2%	5.2%
Top 10 City Pairs		343 080	357 436	364 788	48.4%	2.1%
Other City Pairs		359 337	368 590	389 157	51.6%	5.6%
ALL CITY PAIRS		702 418	726 027	753 945	100.0%	3.8%

Table III International Passengers by Uplift/Discharge Country (a)

Country	Year ended June 2005	Year ended June 2006	Year ended June 2007	% of Total	% Change 2007/06
New Zealand	4 850 699	4 873 461	5 036 228	22.7%	3.3%
Singapore	3 389 932	3 574 900	3 801 144	17.2%	6.3%
Hong Kong	1 495 898	1 723 271	1 739 317	7.9%	0.9%
USA	1 521 092	1 624 028	1 710 607	7.7%	5.3%
Japan	1 693 879	1 634 377	1 513 902	6.8%	-7.4%
Thailand	841 903	912 719	1 189 799	5.4%	30.4%
Malaysia	1 162 073	1 112 840	1 130 685	5.1%	1.6%
United Arab Emirates	625 984	842 876	1 007 911	4.6%	19.6%
UK	679 388	763 775	779 368	3.5%	2.0%
China	435 036	518 133	593 446	2.7%	14.5%
Top 10 Countries	16 695 884	17 580 380	18 502 407	83.6%	5.2%
Other Countries	3 613 849	3 516 571	3 635 360	16.4%	3.4%
ALL COUNTRIES	20 309 733	21 096 951	22 137 767	100.0%	4.9%

Table IV International Passenger Traffic through Australian International Airports (a)

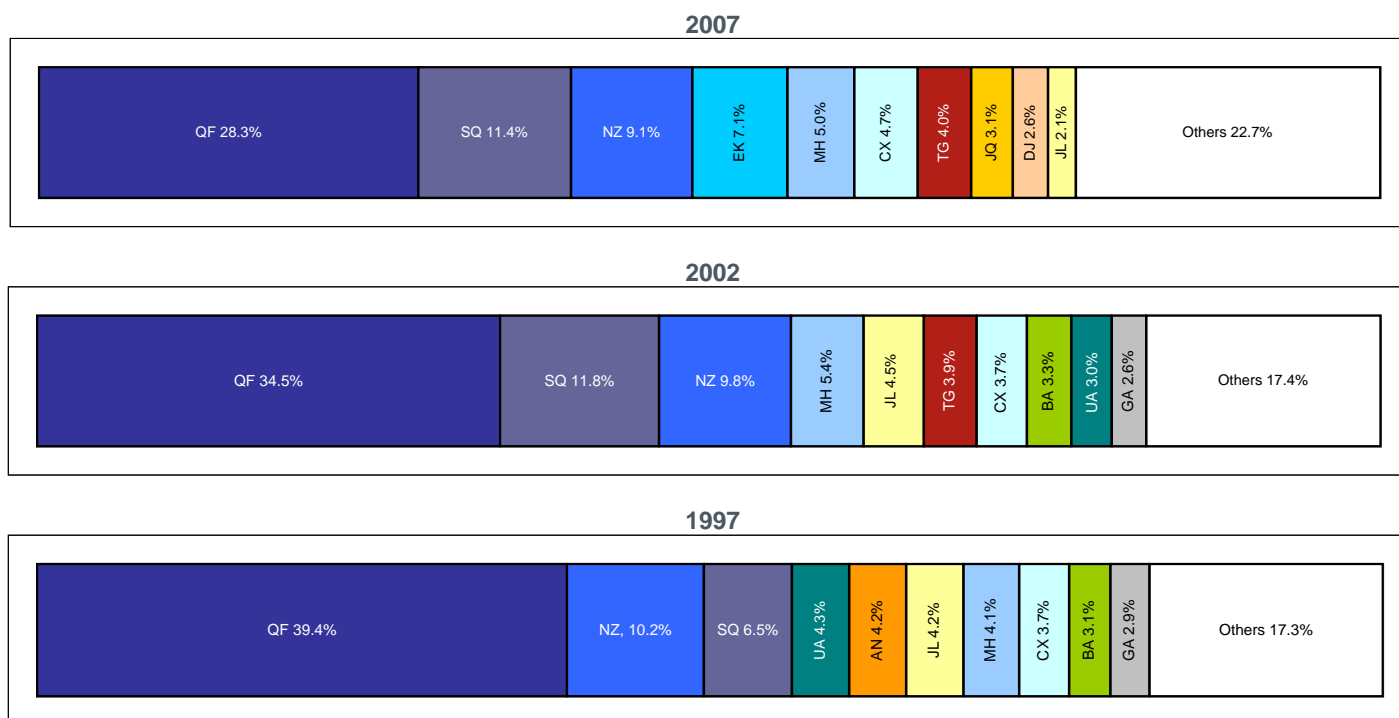
Airport	Year ended June 2005	Year ended June 2006	Year ended June 2007	% of Total	% Change 2007/06
Sydney	9 274 692	9 667 554	10 124 409	45.7%	4.7%
Melbourne	4 144 155	4 253 268	4 419 551	20.0%	3.9%
Brisbane	3 483 857	3 646 891	3 885 906	17.6%	6.6%
Perth	1 945 686	1 979 750	2 191 721	9.9%	10.7%
Cairns	858 145	855 949	729 664	3.3%	-14.8%
Adelaide	317 971	347 064	441 360	2.0%	27.2%
Gold Coast/Coolangatta	159 444	210 495	192 820	0.9%	-8.4%
Darwin	103 215	116 454	134 217	0.6%	15.3%
Norfolk Island	20 572	19 526	18 119	0.1%	-7.2%
Canberra (b)	1 996
ALL AIRPORTS	20 309 733	21 096 951	22 137 767	100.0%	4.9%

(a) Please refer to Explanatory notes - paragraphs 3 & 13 in particular.

(b) International operations commenced July 2004 and ceased September 2004.

Note that there were some freighter operations in Townsville in March, April and May 2006 but no scheduled passenger operations.

Chart III International Passengers by Major Airlines - Top 10 in each year - Years ended June



AN - Ansett International
 BA - British Airways
 CX - Cathay Pacific Airways
 DJ - Pacific Blue
 EK - Emirates

GA - Garuda Indonesia
 JL - Japan Airlines
 JQ - Jetstar
 MH - Malaysia Airlines
 NZ - Air New Zealand

QF - Qantas Airways
 SQ - Singapore Airlines
 TG - Thai Airways
 UA - United Airlines

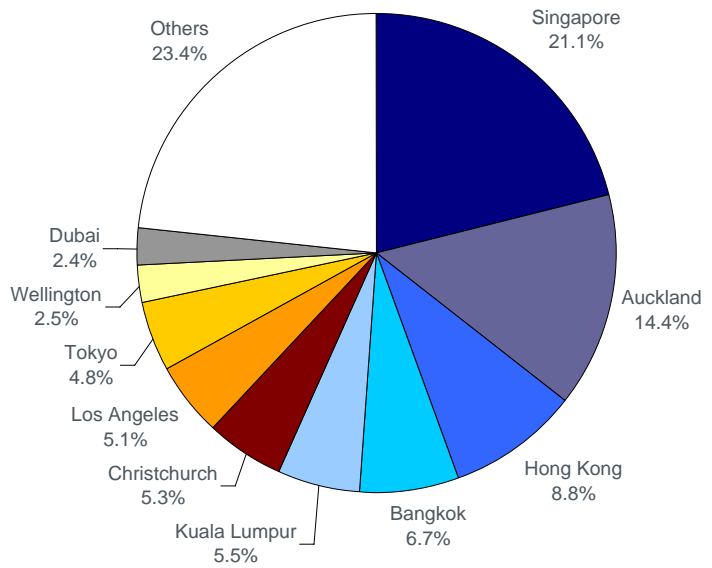
Table V Summary Statistics

	Year ended June 2005	Year ended June 2006	Year ended June 2007	Growth compared to	
				2006	2005
Passengers carried	20 309 733	21 096 951	22 137 767	4.9%	9.0%
Freight (tonnes)	702 418	726 027	753 945	3.8%	7.3%
Mail (tonnes)	29 342	31 842	33 476	5.1%	14.1%
Available Seats	29 691 278	30 041 002	29 768 469	-0.9%	0.3%
Flights	116 087	117 790	119 271	1.3%	2.7%
Aircraft Movements	133 353	132 392	132 585	0.1%	-0.6%

Table VI Traffic on Board Passenger Movements Between Australia and International Cities

Top Fifteen Based on Non-Stop Services - Year ended June 2007 (a)

First on departure from Australia or Last before arrival in Australia	Passenger Movements
Singapore	4 678 568
Auckland	3 195 858
Hong Kong	1 954 821
Bangkok	1 476 276
Kuala Lumpur	1 219 320
Christchurch	1 167 572
Los Angeles	1 127 318
Tokyo	1 064 342
Wellington	543 739
Dubai	526 376
Nadi	491 030
Seoul	448 205
Denpasar	435 153
Shanghai	399 786
Osaka	314 650
Others	3 094 753
	22 137 767



(a) Includes transit passengers on "same flight number" services. Does not include passengers not uplifted/discharged in Australia. For example: Dubai-Auckland passengers on services that operate via Australia to Auckland.

TABLE VII TRANSITTING PASSENGER TRAFFIC THROUGH INTERNATIONAL CITIES

Based on "Same Flight Number" Services - Year ended June 2007

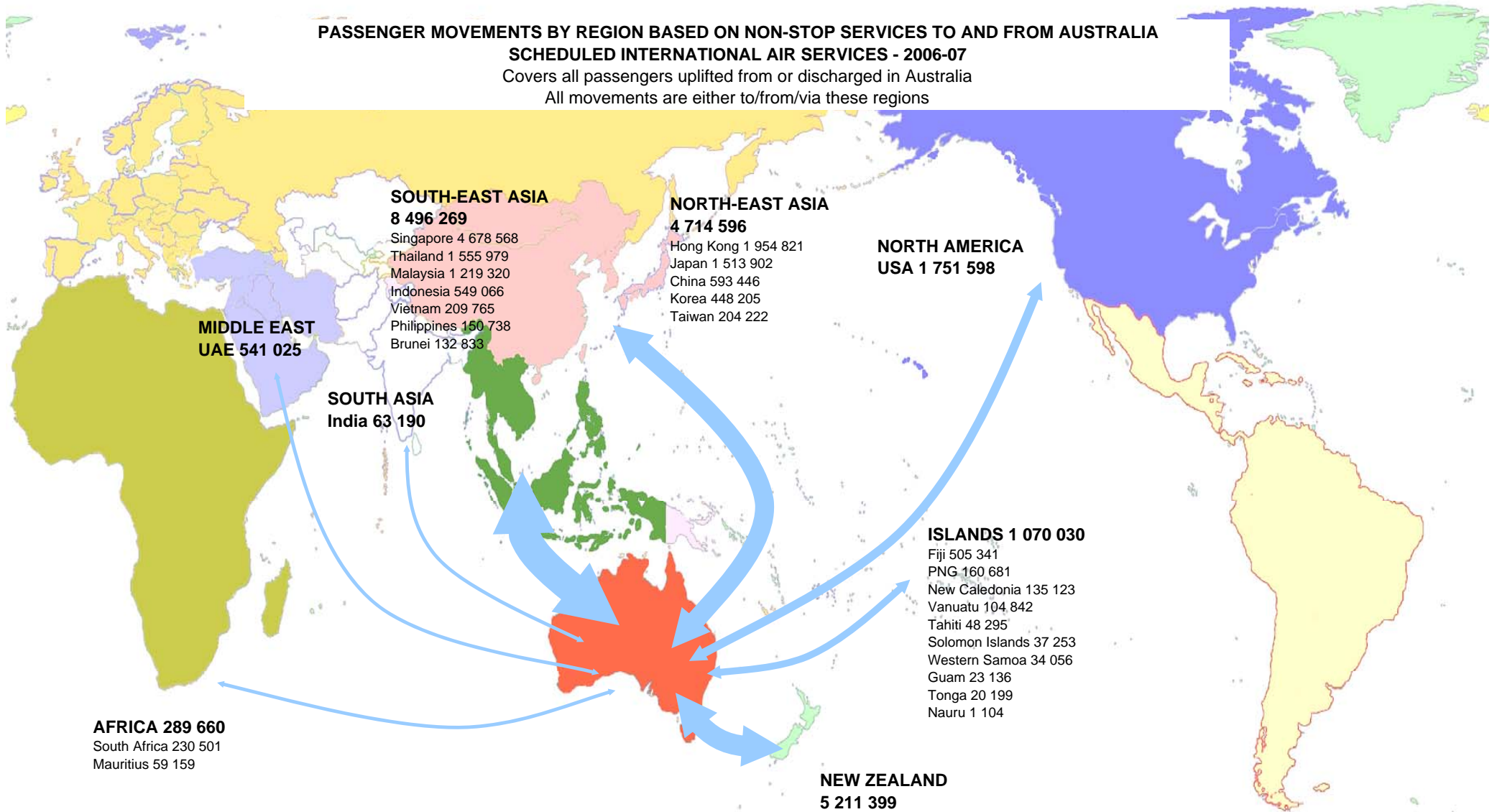
Hubs	Transitting to/from	Passenger Movements	Share
Singapore	Europe and Middle East	884 264	43.0%
Bangkok	Europe and Middle East	366 180	17.8%
Hong Kong	Europe	215 504	10.5%
Auckland	USA and South America	174 321	8.5%
Honolulu	Canada	95 559	4.6%
Kuala Lumpur	Europe	88 635	4.3%
Others (b)		234 165	11.4%
Total Transit traffic		2 058 628	

(b) Mainly covers transitting traffic from one city to another city in the same country. For example: New York via Los Angeles.

Note: The information on Traffic On Board and Transits is derived from the uplift/discharge data used to produce the main Tables in this publication.

Passengers whose travel to/from Australia involves a change in flight number at the non-stop point are not covered in these transit figures.

PASSENGER MOVEMENTS BY REGION BASED ON NON-STOP SERVICES TO AND FROM AUSTRALIA
SCHEDULED INTERNATIONAL AIR SERVICES - 2006-07
 Covers all passengers uplifted from or discharged in Australia
 All movements are either to/from/via these regions



Total Passenger Movements = 22 137 767 South-East Asia = 38.4%, New Zealand = 23.5%, North-East Asia = 21.3%, North America = 7.9%, Islands = 4.8%, Middle East = 2.4% Africa = 1.3% & South Asia = 0.3%

**INTER-REGIONAL PASSENGER MOVEMENTS ON "SAME FLIGHT NUMBER" OPERATIONS BEYOND NON-STOP POINTS
SCHEDULED INTERNATIONAL AIR SERVICES - 2006-07**

Covers all passengers uplifted from or discharged in Australia

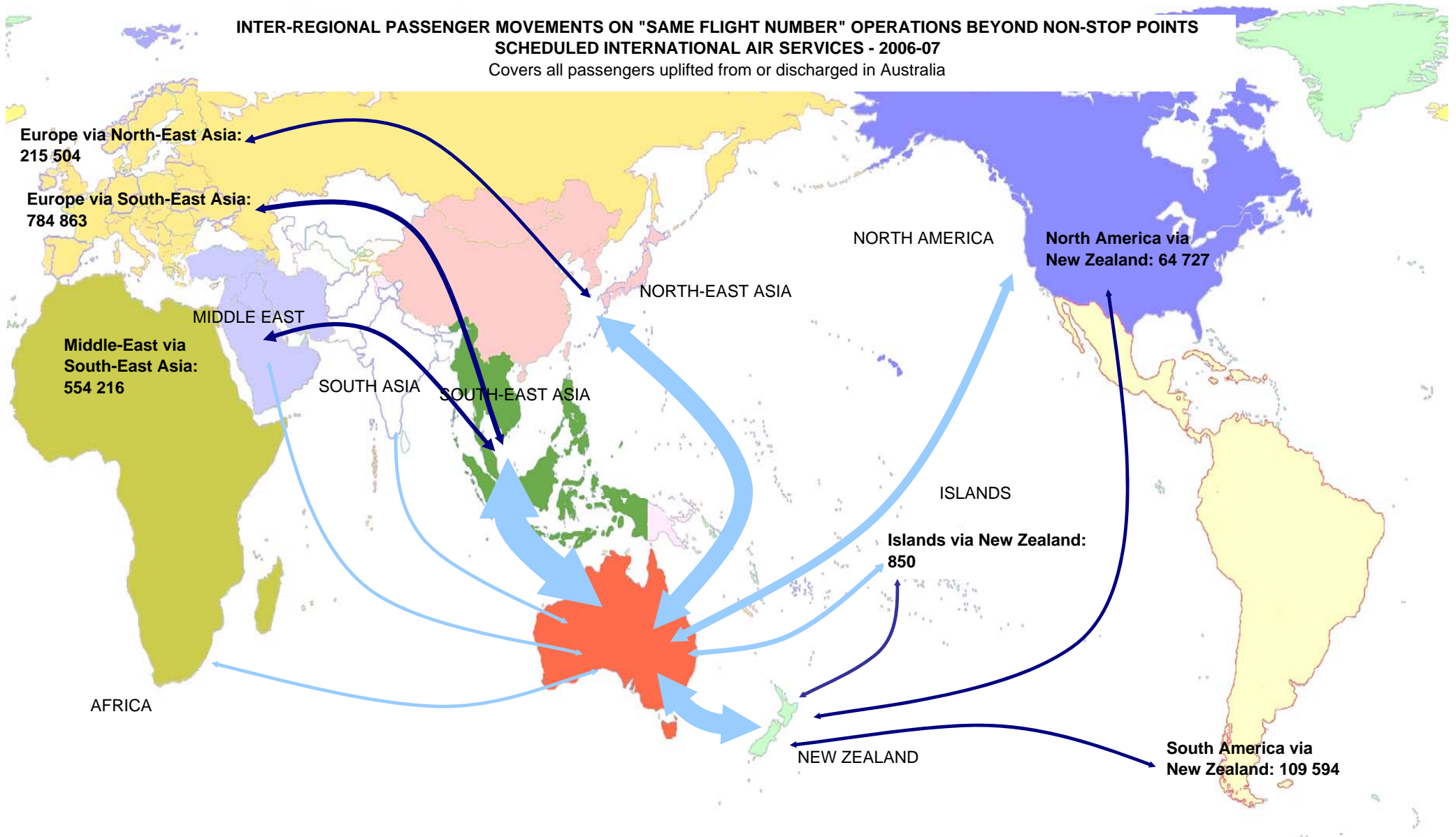


TABLE 1 SCHEDULED INTERNATIONAL AIR TRAFFIC TO AND FROM AUSTRALIA: Year ended June 2007

Scheduled Operator	Country to/from	Inbound			Outbound		
		Passengers	Freight (tonnes)	Mail (tonnes)	Passengers	Freight (tonnes)	Mail (tonnes)
Aerolineas Argentinas	Argentina	19 858	122.9	3.7	18 720	202.4	-
"	New Zealand	13 566	310.3	-	15 884	511.4	-
"	ALL SERVICES	33 424	433.1	3.7	34 604	713.7	-
Air Caledonie	New Caledonia	42 782	49.6	5.4	42 528	785.4	25.7
Air Canada	Canada	45 061	1.6	0.5	49 950	0.4	-
"	USA	14 072	1 813.1	66.5	9 908	2 042.7	1.9
"	ALL SERVICES	59 133	1 814.7	67.0	59 858	2 043.1	1.9
Air China	China	75 486	1 369.0	82.6	67 038	1 072.6	16.5
Air Mauritius	Mauritius	30 045	586.7	2.3	29 114	698.5	-
Air Nauru	Marshall Islands	344	6.8	-
"	Nauru	2 583	3.4	0.5	2 507	75.5	5.7
"	Solomon Islands	1 298	1.0	-	935	12.2	0.0
"	ALL SERVICES	3 881	4.4	0.5	3 786	94.4	5.7
Air New Zealand	China	212.2	-
"	Cook Islands	326	-	-	524	-	-
"	Germany	..	25.3	-	..	37.3	-
"	New Zealand	993 181	20 964.3	2 188.1	989 370	19 876.3	69.9
"	USA	11 206	5 988.1	47.4	10 855	66.0	-
"	ALL SERVICES	1 004 713	26 977.7	2 235.5	1 000 749	20 191.7	69.9
Air Niugini	Papua New Guinea	68 608	773.6	21.0	69 480	2 393.1	277.5
Air Pacific	Fiji	188 589	3 467.0	0.4	188 415	4 033.4	191.3
Air Tahiti Nui	Tahiti	24 195	1 197.2	-	24 100	683.4	-
Air Vanuatu (a)	Vanuatu	37 343	174.7	31.3	37 104	383.1	53.2
Airlines PNG	Papua New Guinea	11 642	24.4	-	10 951	210.8	-
Asian Express Airlines	New Zealand	..	3 575.4	-	..	3 796.3	-
Asiana Airlines	Korea	85 769	2 985.8	220.5	83 284	1 625.4	-
Austrian Airlines (b)	Austria	67 364	-	-	61 963	-	-
"	Malaysia	13 656	-	-	11 078	-	-
"	Singapore	6 036	-	-	5 932	-	-
"	ALL SERVICES	87 056	-	-	78 973	-	-
British Airways	Singapore	33 405	1 299.4	4.2	30 927	2 371.2	-
"	Thailand	58 159	736.4	0.0	50 002	562.1	-
"	UK	96 600	4 348.9	529.4	99 729	969.4	0.1
"	ALL SERVICES	188 164	6 384.8	533.6	180 658	3 902.6	0.1
Cargolux Airlines Intl	Luxembourg	..	4 537.4	-	..	35.7	-
"	New Zealand	3 475.8	-
"	Singapore	..	-	-
"	USA	788.1	-
"	ALL SERVICES	-	4 537.4	-	-	4 299.5	-
Cathay Pacific Airways	Hong Kong	535 391	34 915.7	1 186.9	508 604	26 371.9	294.0
China Airlines	Taiwan	70 449	2 240.6	204.4	75 351	498.8	-
China Eastern Airlines	China	87 166	1 902.1	146.1	75 249	518.6	16.3
China Southern Airlines	China	64 517	2 901.5	98.7	59 797	213.6	11.1
Continental Micronesia	Guam	11 521	4.7	0.1	11 615	27.7	0.1
Emirates	New Zealand	248 319	13 383.5	89.5	237 866	10 839.9	1.3
"	Singapore	31 577	1 967.9	242.1	24 834	4 786.2	6.6
"	Thailand	16 930	751.3	-	14 865	68.9	-
"	United Arab Emirates	505 053	17 346.9	575.8	488 209	18 117.0	57.3
"	ALL SERVICES	801 879	33 449.5	907.4	765 774	33 812.0	65.2
Etihad Airways (c)	United Arab Emirates	5 938	266.5	8.9	8 711	445.2	0.1
Eva Air	Taiwan	29 433	1 572.2	44.0	28 989	722.7	1.0
Federal Express Corporation	Philippines	1 964.7	-
"	USA	..	13 234.6	0.0
"	ALL SERVICES	-	13 234.6	0.0	-	1 964.7	-
Freedom Air International	New Zealand	180 862	-	-	182 274	-	-
Garuda Indonesia	Indonesia	150 959	2 952.6	58.0	153 217	1 758.0	7.4
"	New Zealand	4 022	298.1	-	3 086	191.4	-
"	ALL SERVICES	154 981	3 250.7	58.0	156 303	1 949.4	7.4
Gulf Air (d)	Bahrain	46 236	1 600.7	123.0	41 094	1 870.5	175.4
"	Singapore	11 900	1 200.0	3.1	12 573	843.7	-
"	ALL SERVICES	58 136	2 800.7	126.0	53 667	2 714.2	175.4
Hawaiian Airlines	USA	29 997	172.4	55.1	28 968	698.0	0.0
JALways (e)	Japan	79 144	1 805.7	844.7	83 270	1 503.8	12.3
Japan Airlines	Japan	232 930	5 769.7	656.6	228 207	4 274.1	29.4
Jetstar (f)	Indonesia	28 921	645.1	-	31 301	23.3	-
"	Japan	16 947	409.9	-	17 390	426.1	-

TABLE 1 SCHEDULED INTERNATIONAL AIR TRAFFIC TO AND FROM AUSTRALIA: Year ended June 2007

Scheduled Operator	Country to/from	Inbound			Outbound		
		Passengers	Freight (tonnes)	Mail (tonnes)	Passengers	Freight (tonnes)	Mail (tonnes)
Jetstar	New Zealand	182 088	226.9	-	182 026	227.5	-
"	Singapore	30 545	-	-	32 559	-	-
"	Thailand	39 280	983.6	-	42 806	394.2	-
"	USA	23 295	476.5	-	24 752	382.7	-
"	Vietnam	18 519	714.2	-	20 051	296.2	-
"	ALL SERVICES	339 595	3 456.1	-	350 885	1 750.0	-
Korean Air	Korea	138 567	10 508.9	539.8	136 537	6 624.4	55.4
Lan Chile	Chile	34 862	2 122.4	3.8	36 154	931.5	38.5
"	New Zealand	21 995	469.7	-	29 962	433.9	0.9
"	ALL SERVICES	56 857	2 592.2	3.8	66 116	1 365.4	39.4
Malaysia Airlines	Malaysia	559 290	44 406.7	102.4	546 661	15 375.0	0.0
Martinair Holland	Hong Kong	476.7	-
"	Japan	36.9	-
"	Netherlands	..	7 703.8	-	..	1 352.2	-
"	Thailand	36.9	-
"	UK	30.5	-
"	United Arab Emirates	386.3	-
"	ALL SERVICES	-	7 703.8	-	-	2 319.5	-
Merpati Nusantara Airlines	Indonesia	1 332	-	-	1 842	-	-
Pacific Blue	Fiji	64 182	166.8	-	64 155	297.0	-
"	New Zealand	192 691	740.0	-	204 837	450.6	-
"	Tonga	10 157	40.1	-	10 042	26.4	-
"	Vanuatu	15 315	-	-	15 080	71.9	-
"	ALL SERVICES	282 345	946.9	-	294 114	845.8	-
Philippine Airlines	Philippines	39 561	1 003.7	43.1	35 745	450.3	-
Polynesian Blue	Western Samoa	17 089	92.1	-	16 967	35.7	-
Qantas Airways	Bahrain	..	96.7	-	..	1.8	-
"	Canada	4 975	34.9	3.3	5 732	117.1	57.9
"	China	85 226	5 667.6	-	78 967	1 346.9	24.9
"	Fiji	..	-	-	..	-	-
"	Germany	45 325	5 050.8	25.9	46 347	220.9	479.4
"	Hong Kong	316 239	17 161.9	337.3	299 562	7 317.1	661.2
"	India	33 289	437.5	-	29 901	385.8	57.3
"	Indonesia	88 234	721.9	24.2	86 420	899.3	40.4
"	Italy	104.7	-
"	Japan	427 546	8 957.5	948.7	428 468	7 691.2	1 240.0
"	Kenya	..	99.4	-
"	Korea	2 008	30.2	-	2 040	5.0	1.1
"	Malaysia	-	-
"	New Caledonia	24 709	8.6	3.1	25 104	185.6	21.6
"	New Zealand	658 945	21 287.4	53.1	665 968	24 832.1	2 497.4
"	Philippines	38 431	893.8	44.4	37 001	679.2	21.0
"	Qatar	102.0	-
"	Singapore	519 045	18 341.4	898.7	475 730	22 224.4	2 075.1
"	South Africa	70 570	1 508.2	52.5	65 298	536.9	172.1
"	Thailand	42 916	1 853.7	87.5	42 502	959.1	197.3
"	UK	254 023	6 107.0	972.6	250 962	1 593.4	2 093.7
"	United Arab Emirates	..	-	-	..	318.6	-
"	USA	551 694	29 305.7	3 646.6	560 151	8 114.1	2 268.1
"	ALL SERVICES	3 163 175	117 564.2	7 097.7	3 100 153	77 635.3	11 908.6
Royal Brunei Airlines	Brunei	69 722	1 509.8	0.6	63 111	2 428.6	-
"	New Zealand	15 967	133.3	-	13 319	290.5	-
"	ALL SERVICES	85 689	1 643.1	0.6	76 430	2 719.1	-
Singapore Airlines	Indonesia	7.0	-
"	New Zealand	..	150.0	-	..	2 734.7	-
"	Singapore	1 285 588	59 026.1	1 232.5	1 229 915	50 764.6	17.2
"	ALL SERVICES	1 285 588	59 176.1	1 232.5	1 229 915	53 506.3	17.2
Solomon Airlines	Solomon Islands	14 998	119.0	-	15 692	103.1	-
South African Airways	South Africa	50 758	773.8	70.8	43 875	2 191.6	22.0
Thai Airways International	Thailand	441 909	17 563.4	1 548.0	440 430	11 464.2	44.3
Tiger Airways	Singapore	34 008	-	-	36 570	-	-
Transair (g)	Papua New Guinea	..	28.1	-	..	108.9	-
United Airlines	USA	225 093	734.7	1 874.4	220 616	6 831.9	80.8
United Parcel Service	China	7.0	-
"	Fiji	..	-	-
"	Hong Kong	89.3	-

TABLE 1 SCHEDULED INTERNATIONAL AIR TRAFFIC TO AND FROM AUSTRALIA: Year ended June 2007

Scheduled Operator	Country to/from	Inbound			Outbound		
		Passengers	Freight (tonnes)	Mail (tonnes)	Passengers	Freight (tonnes)	Mail (tonnes)
United Parcel Service	USA	..	9 327.4	-
"	ALL SERVICES	-	9 327.4	-	-	96.3	-
Vietnam Airlines (h)	Vietnam	88 218	2 478.7	-	82 977	318.6	-
Virgin Atlantic Airways	Hong Kong	43 587	5 538.7	-	35 934	1 830.4	-
"	UK	37 044	847.0	-	41 010	585.0	-
"	ALL SERVICES	80 631	6 385.7	-	76 944	2 415.5	-
TOTAL		11 187 877	445 146.5	20 053.9	10 949 890	308 798.5	13 422.0

Please refer to explanatory notes - paragraphs 3, 6 and 13 in particular.

(a) Traffic carried under code share arrangements may not be included for July 2000 to June 2006. Data under review for April 2007 to June 2007.

(b) Service ceased March 2007. No outbound freight data for September 2000 onwards. No inbound freight data for April 2001 onwards.

(c) Service commenced March 2007.

(d) Service ceased June 2007.

(e) Service commenced October 2006. These Tokyo/Sydney services were previously operated by Japan Airlines.

(f) Freight data for services to/from Singapore is not included.

(g) Service ceased December 2006.

(h) No data received for inbound operations to Sydney for August 2002 to May 2004, July 2004 to November 2004, January 2005 to March 2005 and May 2005. Data for Outbound operations have been received for July 2003 onwards.

TABLE 2 SCHEDULED OPERATOR MARKET SHARES AND GROWTH: Year ended June

Scheduled Operators	Country to/from	Total Passengers				Total Freight (tonnes)				Total Mail (tonnes)			
		2006	2007	(%) of TOTAL	(%) Change	2006	2007	(%) of TOTAL	(%) Change	2006	2007	(%) of TOTAL	(%) Change
Aerolineas Argentinas	Argentina	40 038	38 578	0.2	-3.6	464.8	325.2	0.0	-30.0	3.4	3.7	0.0	8.0
"	New Zealand	25 477	29 450	0.1	15.6	718.8	821.6	0.1	14.3	-	-	-	..
"	ALL SERVICES	65 515	68 028	0.3	3.8	1 183.6	1 146.8	0.2	-3.1	3.4	3.7	0.0	8.0
Air Caledonie	New Caledonia	79 867	85 310	0.4	6.8	658.7	835.1	0.1	26.8	17.7	31.1	0.1	75.1
Air Canada	Canada	105 926	95 011	0.4	-10.3	52.1	2.0	0.0	-96.3	26.4	0.5	0.0	-98.0
"	USA	27 710	23 980	0.1	-13.5	4 374.9	3 855.9	0.5	-11.9	342.8	68.4	0.2	-80.1
"	ALL SERVICES	133 636	118 991	0.5	-11.0	4 427.1	3 857.8	0.5	-12.9	369.3	68.9	0.2	-81.3
Air China	China	142 515	142 524	0.6	0.0	1 528.7	2 441.5	0.3	59.7	32.8	99.1	0.3	202.5
Air Mauritius	Mauritius	46 746	59 159	0.3	26.6	712.8	1 285.1	0.2	80.3	3.4	2.3	0.0	-30.3
Air Nauru	Marshall Islands	..	344	0.0	6.8	0.0	-	-	..
"	Nauru	5 836	5 090	0.0	-12.8	133.3	78.9	0.0	-40.8	9.4	6.2	0.0	-33.7
"	Solomon Islands	1 825	2 233	0.0	22.4	0.0	13.1	0.0	>999.9	-	0.0	0.0	..
"	ALL SERVICES	7 661	7 667	0.0	0.1	133.3	98.8	0.0	-25.9	9.4	6.2	0.0	-33.4
Air New Zealand	China	179.8	212.2	0.0	18.0	-	-	-	..
"	Cook Islands	1 156	850	0.0	-26.5	-	-	-	..	-	-	-	..
"	Germany	188.4	62.5	0.0	-66.8	-	-	-	..
"	New Zealand	1 872 755	1 982 551	9.0	5.9	36 716.2	40 840.6	5.4	11.2	618.3	2 258.0	6.7	265.2
"	USA	5 497	22 061	0.1	301.3	5 156.9	6 054.2	0.8	17.4	0.1	47.4	0.1	>999.9
"	ALL SERVICES	1 879 408	2 005 462	9.1	6.7	42 241.3	47 169.5	6.3	11.7	618.4	2 305.4	6.9	272.8
Air Niugini	Papua New Guinea	134 836	138 088	0.6	2.4	4 843.0	3 166.7	0.4	-34.6	273.0	298.5	0.9	9.4
Air Pacific	Fiji	412 465	377 004	1.7	-8.6	8 472.9	7 500.4	1.0	-11.5	225.3	191.8	0.6	-14.9
Air Paradise International (a)	Indonesia	75 591	-100.0	396.2	-100.0	-
Air Tahiti Nui	Tahiti	36 600	48 295	0.2	32.0	1 296.6	1 880.6	0.2	45.0	-	-	-	..
Air Vanuatu (b)	Vanuatu	58 178	74 447	0.3	28.0	550.1	557.8	0.1	1.4	87.8	84.5	0.3	-3.8
Airlines PNG (c)	Papua New Guinea	5 658	22 593	0.1	299.3	35.5	235.2	0.0	562.8	-	-	-	..
Asian Express Airlines	New Zealand	7 547.5	7 371.6	1.0	-2.3	-	-	-	..
Asiana Airlines	Korea	146 764	169 053	0.8	15.2	3 347.1	4 611.2	0.6	37.8	107.1	220.5	0.7	105.8
Australian Airlines (d)	Hong Kong	54 471	-100.0	2 145.1	-100.0	-
"	Indonesia	97 949	-100.0	279.7	-100.0	0.5	-100.0
"	Japan	327 662	-100.0	3 524.2	-100.0	84.4	-100.0
"	Singapore	97 206	-100.0	2 002.3	-100.0	61.6	-100.0
"	Thailand	5 734	-100.0	27.6	-100.0	-
"	ALL SERVICES	583 022	-	-	-100.0	7 978.9	-	-	-100.0	146.5	-	-	-100.0
Austrian Airlines (e)	Austria	201 793	129 327	0.6	-35.9	-	-	-	..	7.1	-	-	-100.0
"	Malaysia	28 148	24 734	0.1	-12.1	-	-	-	..	-	-	-	..
"	Singapore	10 443	11 968	0.1	14.6	-	-	-	..	-	-	-	..
"	ALL SERVICES	240 384	166 029	0.7	-30.9	-	-	-	..	7.1	-	-	-100.0
British Airways	Singapore	148 302	64 332	0.3	-56.6	5 751.1	3 670.5	0.5	-36.2	1.0	4.2	0.0	344.4
"	Thailand	130 694	108 161	0.5	-17.2	2 069.8	1 298.5	0.2	-37.3	-	0.0	0.0	..
"	UK	264 183	196 329	0.9	-25.7	6 814.2	5 318.3	0.7	-22.0	264.2	529.4	1.6	100.4
"	ALL SERVICES	543 179	368 822	1.7	-32.1	14 635.1	10 287.4	1.4	-29.7	265.2	533.7	1.6	101.3
Cargolux Airlines Intl	Luxembourg	5 005.7	4 573.1	0.6	-8.6	-	-	-	..

TABLE 2 SCHEDULED OPERATOR MARKET SHARES AND GROWTH: Year ended June

Scheduled Operators	Country to/from	Total Passengers				Total Freight (tonnes)				Total Mail (tonnes)			
		2006	2007	(%) of TOTAL	(%) Change	2006	2007	(%) of TOTAL	(%) Change	2006	2007	(%) of TOTAL	(%) Change
Cargolux Airlines Intl	Malaysia	-	-
"	New Zealand	4 901.9	3 475.8	0.5	-29.1	-	-	-	..
"	Singapore	-	-	-	..	-	-	-	..
"	USA	788.1	0.1	-	-	..
"	ALL SERVICES	-	-	-	..	9 907.7	8 836.9	1.2	-10.8	-	-	-	..
Cathay Pacific Airways	Hong Kong	978 369	1 043 995	4.7	6.7	63 566.0	61 287.6	8.1	-3.6	1 061.7	1 480.9	4.4	39.5
China Airlines	Taiwan	135 275	145 800	0.7	7.8	3 670.4	2 739.3	0.4	-25.4	139.3	204.4	0.6	46.7
China Eastern Airlines	China	155 583	162 415	0.7	4.4	3 835.5	2 420.6	0.3	-36.9	216.7	162.4	0.5	-25.1
China Southern Airlines	China	110 909	124 314	0.6	12.1	3 251.0	3 115.2	0.4	-4.2	74.3	109.8	0.3	47.8
Continental Micronesia	Guam	24 799	23 136	0.1	-6.7	65.2	32.4	0.0	-50.3	0.8	0.1	0.0	-82.3
Emirates	New Zealand	426 013	486 185	2.2	14.1	24 843.0	24 223.3	3.2	-2.5	1.4	90.9	0.3	>999.9
"	Singapore	54 801	56 411	0.3	2.9	6 820.1	6 754.1	0.9	-1.0	259.8	248.7	0.7	-4.3
"	Thailand	43 694	31 795	0.1	-27.2	981.0	820.1	0.1	-16.4	-	-	-	..
"	United Arab Emirates	842 876	993 262	4.5	17.8	29 993.6	35 463.9	4.7	18.2	324.0	633.1	1.9	95.4
"	ALL SERVICES	1 367 384	1 567 653	7.1	14.6	62 637.7	67 261.5	8.9	7.4	585.2	972.6	2.9	66.2
Etihad Airways (f)	United Arab Emirates	..	14 649	0.1	711.7	0.1	9.0	0.0	..
Eva Air	Taiwan	87 936	58 422	0.3	-33.6	3 610.5	2 294.8	0.3	-36.4	35.0	44.9	0.1	28.4
Federal Express Corporation	Philippines	2 998.1	1 964.7	0.3	-34.5	-	-	-	..
"	USA	13 354.2	13 234.6	1.8	-0.9	5.5	0.0	0.0	-99.9
"	ALL SERVICES	-	-	-	..	16 352.4	15 199.4	2.0	-7.1	5.5	0.0	0.0	-99.9
Freedom Air International	New Zealand	400 553	363 136	1.6	-9.3	-	-	-	..	-	-	-	..
Garuda Indonesia	Indonesia	278 747	304 176	1.4	9.1	5 976.8	4 710.6	0.6	-21.2	52.2	65.4	0.2	25.3
"	New Zealand	18 923	7 108	0.0	-62.4	1 113.2	489.5	0.1	-56.0	-	-	-	..
"	ALL SERVICES	297 670	311 284	1.4	4.6	7 089.9	5 200.1	0.7	-26.7	52.2	65.4	0.2	25.3
Gulf Air (g)	Bahrain	104 858	87 330	0.4	-16.7	3 973.1	3 471.2	0.5	-12.6	234.3	298.4	0.9	27.3
"	Singapore	19 356	24 473	0.1	26.4	2 681.8	2 043.6	0.3	-23.8	6.2	3.1	0.0	-50.3
"	ALL SERVICES	124 214	111 803	0.5	-10.0	6 654.9	5 514.9	0.7	-17.1	240.5	301.4	0.9	25.3
Hawaiian Airlines	USA	74 295	58 965	0.3	-20.6	1 001.1	870.4	0.1	-13.1	55.4	55.2	0.2	-0.4
JALways (h)	Japan	..	162 414	0.7	3 309.4	0.4	857.1	2.6	..
Japan Airlines	Japan	701 345	461 137	2.1	-34.2	13 355.3	10 043.9	1.3	-24.8	1 413.3	686.0	2.0	-51.5
Jetstar (i) (j)	Indonesia	..	60 222	0.3	668.3	0.1	-	-	..
"	Japan	..	34 337	0.2	836.0	0.1	-	-	..
"	New Zealand	199 475	364 114	1.6	82.5	229.0	454.4	0.1	98.4	-	-	-	..
"	Singapore	..	63 104	0.3	-	-	-	-	..
"	Thailand	..	82 086	0.4	1 377.8	0.2	-	-	..
"	USA	..	48 047	0.2	859.2	0.1	-	-	..
"	Vietnam	..	38 570	0.2	1 010.3	0.1	-	-	..
"	ALL SERVICES	199 475	690 480	3.1	246.1	229.0	5 206.1	0.7	>999.9	-	-	-	..
Korean Air	Korea	231 507	275 104	1.2	18.8	14 099.9	17 133.2	2.3	21.5	423.0	595.1	1.8	40.7
Lan Chile	Chile	49 743	71 016	0.3	42.8	2 130.7	3 054.0	0.4	43.3	40.5	42.3	0.1	4.5
"	New Zealand	35 119	51 957	0.2	47.9	608.8	903.6	0.1	48.4	6.9	0.9	0.0	-87.0
"	ALL SERVICES	84 862	122 973	0.6	44.9	2 739.5	3 957.6	0.5	44.5	47.4	43.2	0.1	-8.9

TABLE 2 SCHEDULED OPERATOR MARKET SHARES AND GROWTH: Year ended June

Scheduled Operators	Country to/from	Total Passengers				Total Freight (tonnes)				Total Mail (tonnes)			
		2006	2007	(%) of TOTAL	(%) Change	2006	2007	(%) of TOTAL	(%) Change	2006	2007	(%) of TOTAL	(%) Change
Malaysia Airlines	Malaysia	1 084 692	1 105 951	5.0	2.0	39 785.7	59 781.7	7.9	50.3	96.0	102.5	0.3	6.7
Martinair Holland	Hong Kong	383.1	476.7	0.1	24.4	-	-	-	..
"	Japan	36.9	0.0	-	-	..
"	Netherlands	8 547.4	9 056.0	1.2	6.0	-	-	-	..
"	Thailand	90.4	36.9	0.0	-59.2	-	-	-	..
"	UK	30.5	0.0	-	-	..
"	United Arab Emirates	234.7	386.3	0.1	64.6	-	-	-	..
"	ALL SERVICES	-	-	-	..	9 255.6	10 023.3	1.3	8.3	-	-	-	..
Merpati Nusantara Airlines	Indonesia	3 185	3 174	0.0	-0.3	-	-	-	..	-	-	-	..
Pacific Blue	Fiji	114 755	128 337	0.6	11.8	274.0	463.8	0.1	69.3	-	-	-	..
"	New Zealand	344 827	397 528	1.8	15.3	375.1	1 190.5	0.2	217.3	-	-	-	..
"	Tonga	12 061	20 199	0.1	67.5	14.6	66.5	0.0	357.1	-	-	-	..
"	Vanuatu	23 113	30 395	0.1	31.5	29.7	71.9	0.0	142.1	-	-	-	..
"	ALL SERVICES	494 756	576 459	2.6	16.5	693.4	1 792.7	0.2	158.5	-	-	-	..
Philippine Airlines	Philippines	69 033	75 306	0.3	9.1	1 591.0	1 454.0	0.2	-8.6	32.1	43.1	0.1	34.4
Polar Air Cargo (k)	USA	-	-
Polynesian Airlines (l)	Tonga	805	-100.0	1.6	-100.0	1.6	-100.0
"	Western Samoa	1 841	-100.0	3.9	-100.0	0.5	-100.0
"	ALL SERVICES	2 646	-	-	-100.0	5.4	-	-	-100.0	2.0	-	-	-100.0
Polynesian Blue (m)	Western Samoa	20 576	34 056	0.2	65.5	35.2	127.8	0.0	263.0	-	-	-	..
Qantas Airways	Bahrain	98.5	0.0	-	-	..
"	Canada	1 429	10 707	0.0	649.3	11.1	152.0	0.0	>999.9	10.2	61.2	0.2	498.2
"	China	109 126	164 193	0.7	50.5	7 286.7	7 014.5	0.9	-3.7	18.3	24.9	0.1	35.8
"	Fiji	93.4	-	-	-100.0	-	-	-	..
"	Germany	82 826	91 672	0.4	10.7	5 488.5	5 271.8	0.7	-3.9	538.2	505.3	1.5	-6.1
"	Hong Kong	595 460	615 801	2.8	3.4	25 203.4	24 479.1	3.2	-2.9	1 014.4	998.6	3.0	-1.6
"	India	66 791	63 190	0.3	-5.4	949.8	823.4	0.1	-13.3	68.7	57.3	0.2	-16.5
"	Indonesia	101 655	174 654	0.8	71.8	1 512.5	1 621.2	0.2	7.2	68.9	64.6	0.2	-6.2
"	Italy	104.7	0.0	-	-	..
"	Japan	605 370	856 014	3.9	41.4	14 087.1	16 648.7	2.2	18.2	2 482.6	2 188.7	6.5	-11.8
"	Kazakhstan	15.4	-100.0	-
"	Kenya	99.4	0.0	-	-	..
"	Korea	4 529	4 048	0.0	-10.6	109.9	35.2	0.0	-68.0	10.8	1.1	0.0	-89.4
"	Malaysia	223.4	-	-	-100.0	-	-	-	..
"	Netherlands	-	-
"	New Caledonia	46 263	49 813	0.2	7.7	215.0	194.1	0.0	-9.7	28.0	24.7	0.1	-11.9
"	New Zealand	1 492 106	1 324 913	6.0	-11.2	51 857.1	46 119.5	6.1	-11.1	3 408.4	2 550.4	7.6	-25.2
"	Philippines	76 839	75 432	0.3	-1.8	1 156.0	1 573.0	0.2	36.1	62.2	65.4	0.2	5.1
"	Qatar	102.0	0.0	-	-	..
"	Singapore	891 602	994 775	4.5	11.6	33 007.6	40 565.8	5.4	22.9	2 815.0	2 973.8	8.9	5.6
"	South Africa	119 488	135 868	0.6	13.7	2 056.9	2 045.1	0.3	-0.6	181.2	224.5	0.7	23.9
"	Thailand	105 627	85 418	0.4	-19.1	2 813.8	2 812.9	0.4	0.0	303.1	284.8	0.9	-6.0

TABLE 2 SCHEDULED OPERATOR MARKET SHARES AND GROWTH: Year ended June

Scheduled Operators	Country to/from	Total Passengers				Total Freight (tonnes)				Total Mail (tonnes)			
		2006	2007	(%) of TOTAL	(%) Change	2006	2007	(%) of TOTAL	(%) Change	2006	2007	(%) of TOTAL	(%) Change
Qantas Airways	UK	464 110	504 985	2.3	8.8	8 533.7	7 700.4	1.0	-9.8	4 192.9	3 066.3	9.2	-26.9
"	United Arab Emirates	58.2	318.6	0.0	447.3	-	-	-	..
"	USA	1 041 765	1 111 845	5.0	6.7	38 111.0	37 419.8	5.0	-1.8	5 422.9	5 914.7	17.7	9.1
"	ALL SERVICES	5 804 986	6 263 328	28.3	7.9	192 790.6	195 199.5	25.9	1.2	20 625.8	19 006.3	56.8	-7.9
Royal Brunei Airlines	Brunei	134 482	132 833	0.6	-1.2	3 962.9	3 938.4	0.5	-0.6	0.3	0.6	0.0	89.9
"	New Zealand	36 190	29 286	0.1	-19.1	442.0	423.9	0.1	-4.1	-	-	-	..
"	ALL SERVICES	170 672	162 119	0.7	-5.0	4 404.9	4 362.2	0.6	-1.0	0.3	0.6	0.0	89.9
Singapore Airlines	Indonesia	36.2	7.0	0.0	-80.6	-	-	-	..
"	New Zealand	3 829.9	2 884.6	0.4	-24.7	-	-	-	..
"	Singapore	2 324 530	2 515 503	11.4	8.2	107 001.4	109 790.6	14.6	2.6	1 407.7	1 249.7	3.7	-11.2
"	ALL SERVICES	2 324 530	2 515 503	11.4	8.2	110 867.4	112 682.3	14.9	1.6	1 407.7	1 249.7	3.7	-11.2
Solomon Airlines	Solomon Islands	22 573	30 690	0.1	36.0	142.4	222.1	0.0	56.0	-	-	-	..
South African Airways	South Africa	88 176	94 633	0.4	7.3	3 228.2	2 965.4	0.4	-8.1	93.3	92.8	0.3	-0.6
Thai Airways International	New Zealand	22 023	-100.0	1 125.9	-100.0	0.1	-100.0
"	Thailand	626 970	882 339	4.0	40.7	23 883.0	29 027.6	3.9	21.5	1 315.9	1 592.4	4.8	21.0
"	ALL SERVICES	648 993	882 339	4.0	36.0	25 008.9	29 027.6	3.9	16.1	1 316.0	1 592.4	4.8	21.0
Tiger Airways (i)	Singapore	19 517	70 578	0.3	261.6	-	-	-	..	-	-	-	..
Transair (n)	Papua New Guinea	305.1	137.0	0.0	-55.1	-	-	-	..
United Airlines	Fiji	-	-	-
"	USA	474 761	445 709	2.0	-6.1	8 515.2	7 566.5	1.0	-11.1	1 741.5	1 955.2	5.8	12.3
"	ALL SERVICES	474 761	445 709	2.0	-6.1	8 515.2	7 566.5	1.0	-11.1	1 741.5	1 955.2	5.8	12.3
United Parcel Service	China	-	7.0	0.0	..	-	-	-	..
"	Fiji	-	-	-	..	-	-	-	..
"	Hong Kong	104.5	89.3	0.0	-14.6	-	-	-	..
"	USA	5 964.6	9 327.4	1.2	56.4	-	-	-	..
"	ALL SERVICES	-	-	-	..	6 069.1	9 423.7	1.2	55.3	-	-	-	..
Valuair (o)	Singapore	9 143	-100.0	10.0	-100.0	-
Vietnam Airlines (p)	Vietnam	162 058	171 195	0.8	5.6	3 207.2	2 797.3	0.4	-12.8	10.9	-	-	-100.0
Virgin Atlantic Airways	Hong Kong	94 971	79 521	0.4	-16.3	6 592.2	7 369.2	1.0	11.8	-	-	-	..
"	UK	35 482	78 054	0.4	120.0	1 465.2	1 432.0	0.2	-2.3	-	-	-	..
"	ALL SERVICES	130 453	157 575	0.7	20.8	8 057.4	8 801.2	1.2	9.2	-	-	-	..
TOTAL		21 096 951	22 137 767	100.0	4.9	726 026.8	753 945.0	100.0	3.8	31 842.1	33 475.9	100.0	5.1

TABLE 2 SCHEDULED OPERATOR MARKET SHARES AND GROWTH: Year ended June

Scheduled Operators	Country to/from	Total Passengers				Total Freight (tonnes)				Total Mail (tonnes)			
		2006	2007	(%) of TOTAL	(%) Change	2006	2007	(%) of TOTAL	(%) Change	2006	2007	(%) of TOTAL	(%) Change

Please refer to explanatory notes - paragraphs 3, 6 and 13 in particular.

(a) Service ceased November 2005. No data received for November 2005 and missing data for Adelaide and Melbourne for September 2005.

(b) Traffic carried under code share arrangements may not be included for July 2000 to June 2006. Data under review for April 2007 to June 2007.

(c) Scheduled services commenced in November 2005.

(d) Service ceased June 2006.

(e) Service ceased March 2007. No outbound freight data for September 2000 onwards. No inbound freight data for April 2001 onwards.

(f) Service commenced March 2007.

(g) Service ceased June 2007.

(h) Service commenced October 2006. These Tokyo/Sydney services were previously operated by Japan Airlines.

(i) Service commenced December 2005.

(j) Freight data for services to/from Singapore is not included.

(k) Service ceased October 2005. No data received for March 2003 and onwards.

(l) Data not received for August, September & October 2005. Service ceased October 2005.

(m) Service commenced November 2005.

(n) Service ceased December 2006.

(o) Data not received for September & October 2005. Service commenced December 2004 and ceased October 2005.

(p) No data received for inbound operations to Sydney for August 2002 to May 2004, July 2004 to November 2004, January 2005 to March 2005 and May 2005. Data for Outbound operations have been received for July 2003 onwards.

TABLE 3 AIRLINE PASSENGER CAPACITY AND UTILISATION TO AND FROM AUSTRALIA BY OPERATOR: Year ended June 2007

Scheduled Operator	Service to/from	Inbound				Outbound			
		No. of Flights	Pax Carried	Seats Available	Seat Utilisation %	No. of Flights	Pax Carried	Seats Available	Seat Utilisation %
Aerolineas Argentinas	Argentina	161	33 424	39 767	84.0	161	34 604	39 767	87.0
Air Caledonie	New Caledonia	316	42 782	56 761	75.4	316	42 528	56 636	75.1
Air Canada	Canada	364	59 133	78 517	75.3	364	59 858	78 248	76.5
Air China	China	364	75 486	87 814	86.0	364	67 038	87 814	76.3
Air Mauritius	Mauritius	151	30 045	39 622	75.8	151	29 114	39 503	73.7
Air Nauru	Nauru	81	3 881	9 694	40.0	81	3 786	9 723	38.9
Air New Zealand	Cook Islands	26	2 921	3 943	74.1	40	4 065	6 080	66.9
"	Germany	100	..	-	..	99	..	-	..
"	New Zealand	6 604	897 225	1 187 195	75.6	6 586	883 979	1 185 349	74.6
"	USA	397	104 567	145 832	71.7	393	112 705	144 357	78.1
"	ALL SERVICES	7 127	1 004 713	1 336 970	75.1	7 118	1 000 749	1 335 786	74.9
Air Niugini	Papua New Guinea	837	68 608	125 031	54.9	834	69 480	125 006	55.6
Air Pacific	Fiji	1 084	188 589	292 051	64.6	1 083	188 415	292 183	64.5
Air Tahiti Nui	Tahiti	135	24 195	39 690	61.0	135	24 100	39 690	60.7
Air Vanuatu (a)	Vanuatu	435	37 343	54 810	68.1	433	37 104	54 558	68.0
Airlines PNG	Papua New Guinea	478	11 642	19 542	59.6	480	10 951	19 611	55.8
Asian Express Airlines (b)	New Zealand	238	..	-	..	238	..	-	..
Asiana Airlines	Korea	357	85 769	110 670	77.5	357	83 284	110 670	75.3
Austrian Airlines (c)	Austria	342	87 056	108 834	80.0	342	78 973	108 834	72.6
British Airways	UK	729	188 164	239 119	78.7	729	180 658	239 445	75.4
Cargolux Airlines Intl (b)	Luxembourg	100	..	-	..	73	..	-	..
"	New Zealand	-	..	-	..	27
"	ALL SERVICES	100	-	-	..	100	-	-	..
Cathay Pacific Airways	Hong Kong	2 497	535 391	636 292	84.1	2 494	508 604	635 539	80.0
China Airlines	Taiwan	323	70 449	94 367	74.7	323	75 351	94 367	79.8
China Eastern Airlines	China	390	87 166	107 449	81.1	388	75 249	106 840	70.4
China Southern Airlines	China	312	64 517	83 352	77.4	312	59 797	83 352	71.7
Continental Micronesia	Guam	117	11 521	18 018	63.9	117	11 615	18 018	64.5
Emirates	New Zealand	1 453	248 319	457 956	54.2	1 453	237 866	457 956	51.9
"	United Arab Emirates	2 528	553 560	813 269	68.1	2 528	527 908	813 269	64.9
"	ALL SERVICES	3 981	801 879	1 271 225	63.1	3 981	765 774	1 271 225	60.2
Etihad Airways (d)	United Arab Emirates	42	5 938	10 080	58.9	42	8 711	10 080	86.4
Eva Air	Taiwan	157	29 433	39 564	74.4	157	28 989	39 564	73.3
Federal Express Corporation (b)	Philippines	-	..	-	..	261
"	USA	262	-	..	-	..
"	ALL SERVICES	262	-	-	..	261	-	-	..
Freedom Air International	New Zealand	1 731	180 862	258 686	69.9	1 733	182 274	259 046	70.4
Garuda Indonesia	Indonesia	1 040	150 959	209 090	72.2	1 039	153 217	208 956	73.3
"	New Zealand	41	4 022	12 013	33.5	41	3 086	12 013	25.7
"	ALL SERVICES	1 081	154 981	221 103	70.1	1 080	156 303	220 969	70.7
Gulf Air (e)	Bahrain	312	58 136	77 688	74.8	311	53 667	77 439	69.3
Hawaiian Airlines	USA	156	29 997	39 516	75.9	156	28 968	39 516	73.3
JALways (f)	Japan	272	79 144	115 900	68.3	272	83 270	115 900	71.8

TABLE 3 AIRLINE PASSENGER CAPACITY AND UTILISATION TO AND FROM AUSTRALIA BY OPERATOR: Year ended June 2007

Scheduled Operator	Service to/from	Inbound				Outbound			
		No. of Flights	Pax Carried	Seats Available	Seat Utilisation %	No. of Flights	Pax Carried	Seats Available	Seat Utilisation %
Japan Airlines	Japan	724	232 930	315 960	73.7	724	228 207	314 749	72.5
Jetstar	Indonesia	117	28 921	35 451	81.6	118	31 301	35 754	87.5
"	Japan	98	16 947	29 694	57.1	98	17 390	29 694	58.6
"	New Zealand	1 459	182 088	258 243	70.5	1 457	182 026	257 889	70.6
"	Singapore	245	30 545	43 548	70.1	245	32 559	43 548	74.8
"	Thailand	181	39 280	54 843	71.6	186	42 806	56 358	76.0
"	USA	126	23 295	38 178	61.0	125	24 752	37 875	65.4
"	Vietnam	90	18 519	27 270	67.9	92	20 051	27 876	71.9
"	ALL SERVICES	2 316	339 595	487 227	69.7	2 321	350 885	488 994	71.8
Korean Air	Korea	681	138 567	187 030	74.1	681	136 537	187 030	73.0
Lan Chile	Chile	306	56 857	79 254	71.7	305	66 116	78 995	83.7
Malaysia Airlines	Malaysia	2 574	559 290	725 062	77.1	2 541	546 661	724 439	75.5
Martinair Holland (b)	Netherlands	98	..	-	..	99	..	-	..
Merpati Nusantara Airlines	Indonesia	104	1 332	3 120	42.7	104	1 842	3 116	59.1
Pacific Blue	Fiji	517	64 182	93 060	69.0	517	64 155	93 060	68.9
"	New Zealand	1 465	192 691	263 700	73.1	1 459	204 837	262 620	78.0
"	Tonga	106	10 157	19 080	53.2	104	10 042	18 720	53.6
"	Vanuatu	105	15 315	18 900	81.0	105	15 080	18 900	79.8
"	ALL SERVICES	2 193	282 345	394 740	71.5	2 185	294 114	393 300	74.8
Philippine Airlines	Philippines	157	39 561	47 545	83.2	157	35 745	47 545	75.2
Polynesian Blue	Western Samoa	158	17 089	28 440	60.1	159	16 967	28 620	59.3
Qantas Airways	Bahrain	2	3
"	Canada	54	16 049	18 338	87.5	54	17 016	18 832	90.4
"	China	403	86 269	105 994	81.4	403	81 089	106 079	76.4
"	Fiji	1	1
"	Germany	416	140 355	149 528	93.9	423	133 570	149 561	89.3
"	Hong Kong	1 137	276 699	328 581	84.2	1 116	252 826	327 250	77.3
"	India	155	34 985	40 569	86.2	156	31 606	46 312	68.2
"	Indonesia	543	73 221	107 970	67.8	543	67 950	107 992	62.9
"	Italy	1
"	Japan	2 323	433 864	590 992	73.4	2 331	434 234	593 096	73.2
"	Korea	12	2 112	2 724	77.5	12	2 374	2 724	87.2
"	New Caledonia	211	29 490	41 220	71.5	211	30 106	41 214	73.0
"	New Zealand	4 683	655 088	828 860	79.0	4 681	644 406	846 718	76.1
"	Philippines	207	42 350	47 147	89.8	206	39 612	47 156	84.0
"	Singapore	1 475	350 320	416 748	84.1	1 474	326 658	417 009	78.3
"	South Africa	261	81 158	99 315	81.7	261	74 147	95 950	77.3
"	UK	1 456	485 032	548 973	88.4	1 460	485 550	550 559	88.2
"	USA	2 425	637 324	787 652	80.9	2 425	657 505	796 076	82.6
"	ALL SERVICES	15 764	3 344 316	4 114 611	81.3	15 761	3 278 649	4 146 528	79.1
Royal Brunei Airlines	Brunei	665	69 722	124 785	55.9	661	63 111	123 996	50.9
"	New Zealand	151	15 967	31 479	50.7	153	13 319	31 926	41.7
"	ALL SERVICES	816	85 689	156 264	54.8	814	76 430	155 922	49.0

TABLE 3 AIRLINE PASSENGER CAPACITY AND UTILISATION TO AND FROM AUSTRALIA BY OPERATOR: Year ended June 2007

Scheduled Operator	Service to/from	Inbound				Outbound			
		No. of Flights	Pax Carried	Seats Available	Seat Utilisation %	No. of Flights	Pax Carried	Seats Available	Seat Utilisation %
Singapore Airlines	New Zealand	2	..	-	..	2	..	-	..
"	Singapore	4 644	1 285 588	1 518 619	84.7	4 644	1 229 915	1 518 707	81.0
"	ALL SERVICES	4 646	1 285 588	1 518 619	84.7	4 646	1 229 915	1 518 707	81.0
Solomon Airlines	Solomon Islands	223	14 998	28 118	53.3	225	15 692	28 390	55.3
South African Airways	South Africa	266	50 758	66 262	76.6	266	43 875	66 238	66.2
Thai Airways International	Thailand	1 638	441 909	552 620	80.0	1 639	440 430	552 908	79.7
Tiger Airways	Singapore	296	34 008	53 280	63.8	297	36 570	53 460	68.4
Transair (b) (g)	Papua New Guinea	82	..	-	..	82	..	-	..
United Airlines	USA	771	225 093	267 537	84.1	766	220 616	265 802	83.0
United Parcel Service (b)	China	-	..	-	..	46
"	Hong Kong	-	..	-	..	105
"	USA	243	-	..	-	..
"	ALL SERVICES	243	-	-	..	151	-	-	..
Vietnam Airlines (h)	Vietnam	359	88 218	121 189	72.8	360	82 977	121 527	68.3
Virgin Atlantic Airways	UK	364	80 631	111 930	72.0	364	76 944	111 930	68.7
TOTAL		59 711	11 369 018	14 870 940	76.5	59 560	11 128 386	14 897 529	74.7

Please refer to explanatory notes - paragraphs 4, 5, 7 and 14 in particular.

In addition to the above, please note the following regarding **Seat Factors** shown in this table:

Traffic shown in this table for Australian Airlines and Qantas Airways will differ from traffic shown in Tables 1 and 2 because of the inclusion in this table of total traffic into and ex Australia (for seat factor purposes) whereas Tables 1 and 2 include uplift/discharge traffic only.

All other airlines report uplift/discharge traffic only. Therefore, for other airlines operating **via** Australia, the seat factors shown here reflect the total seats on the aircraft but only the Australian uplift/discharge portion of passengers on the aircraft. The true seat factors for airlines that operate **via** Australia will most likely be higher than what is shown in this table.

For example, on Dubai-Sydney-Auckland services:

Seats on the Dubai-Sydney sector are taken up by Dubai-Sydney and Dubai-Auckland passengers. However, when calculating seat factors, only the Dubai-Sydney passengers are used.

Similarly, seats on the Sydney-Auckland sector are taken up by Sydney-Auckland and Dubai-Auckland passengers. However, when calculating seat factors, only the Sydney-Auckland passengers are used.

The following airlines are affected:

Emirates, Garuda Indonesia and Royal Brunei Airlines

(a) Traffic carried under code share arrangements may not be included for July 2000 to June 2006. Data under review for April 2007 to June 2007.

(b) Freight flights only.

(c) Service ceased March 2007.

(d) Service commenced March 2007.

(e) Service ceased June 2007.

(f) Service commenced October 2006. These Tokyo/Sydney services were previously operated by Japan Airlines.

(g) Service ceased December 2006.

(h) No data received for inbound operations to Sydney for August 2002 to May 2004, July 2004 to November 2004, January 2005 to March 2005 and May 2005. Data for Outbound operations have been received for July 2003 onwards.

TABLE 4 SCHEDULED INTERNATIONAL AIRPORT TRAFFIC AND AIRCRAFT MOVEMENTS: Year ended June

		Inbound		(%)	Outbound		(%)	Total		(%)	(%) of
		2006	2007	Change	2006	2007	Change	2006	2007	Change	TOTAL
Adelaide	Passengers	179 665	230 016	28.0	167 399	211 344	26.3	347 064	441 360	27.2	2.0
"	Freight (Tonnes)	8 198	9 346	14.0	8 844	9 322	5.4	17 042	18 668	9.5	2.5
"	Aircraft Movements	1 233	1 520	23.3	1 231	1 518	23.3	2 464	3 038	23.3	2.3
Brisbane	Passengers	1 844 375	1 965 894	6.6	1 802 516	1 920 012	6.5	3 646 891	3 885 906	6.6	17.6
"	Freight (Tonnes)	44 909	45 274	0.8	40 302	43 301	7.4	85 210	88 575	3.9	11.7
"	Aircraft Movements	11 173	11 844	6.0	11 163	11 804	5.7	22 336	23 648	5.9	17.8
Cairns	Passengers	432 723	368 590	-14.8	423 226	361 074	-14.7	855 949	729 664	-14.8	3.3
"	Freight (Tonnes)	3 484	2 933	-15.8	8 120	5 084	-37.4	11 604	8 018	-30.9	1.1
"	Aircraft Movements	4 253	4 014	-5.6	4 251	4 013	-5.6	8 504	8 027	-5.6	6.1
Darwin	Passengers	58 340	65 662	12.6	58 114	68 555	18.0	116 454	134 217	15.3	0.6
"	Freight (Tonnes)	398	149	-62.5	158	178	12.3	556	327	-41.2	0.0
"	Aircraft Movements	1 155	1 475	27.7	1 154	1 476	27.9	2 309	2 951	27.8	2.2
Gold Coast/Coolangatta	Passengers	104 097	96 633	-7.2	106 398	96 187	-9.6	210 495	192 820	-8.4	0.9
"	Freight (Tonnes)	0	2	926.6	63	0	-99.2	63	2	-96.7	0.0
"	Aircraft Movements	1 245	874	-29.8	1 244	870	-30.1	2 489	1 744	-29.9	1.3
Melbourne	Passengers	2 161 805	2 249 222	4.0	2 091 463	2 170 329	3.8	4 253 268	4 419 551	3.9	20.0
"	Freight (Tonnes)	107 927	111 876	3.7	89 156	91 629	2.8	197 083	203 505	3.3	27.0
"	Aircraft Movements	12 601	11 967	-5.0	12 612	11 938	-5.3	25 213	23 905	-5.2	18.0
Norfolk Island	Passengers	9 654	9 001	-6.8	9 872	9 118	-7.6	19 526	18 119	-7.2	0.1
"	Freight (Tonnes)	91	91	0.8	14	16	14.5	105	108	2.7	0.0
"	Aircraft Movements	103	104	1.0	103	104	1.0	206	208	1.0	0.2
Perth	Passengers	1 009 750	1 121 941	11.1	970 000	1 069 780	10.3	1 979 750	2 191 721	10.7	9.9
"	Freight (Tonnes)	26 797	32 198	20.2	32 892	32 588	-0.9	59 689	64 786	8.5	8.6
"	Aircraft Movements	5 105	5 579	9.3	5 119	5 581	9.0	10 224	11 160	9.2	8.4
Sydney	Passengers	4 823 061	5 080 918	5.3	4 844 493	5 043 491	4.1	9 667 554	10 124 409	4.7	45.7
"	Freight (Tonnes)	234 782	243 277	3.6	119 841	126 679	5.7	354 623	369 956	4.3	49.1
"	Aircraft Movements	29 354	28 992	-1.2	29 287	28 912	-1.3	58 641	57 904	-1.3	43.7
Townsville (a)	Passengers	-	-
"	Freight (Tonnes)	-	51	..	-100.0	51	-	-100.0	..
"	Aircraft Movements	3	..	-100.0	3	..	-100.0	6	-	-100.0	..
TOTAL	Passengers	10 623 470	11 187 877	5.3	10 473 481	10 949 890	4.5	21 096 951	22 137 767	4.9	100.0
	Freight (Tonnes)	426 585	445 146	4.4	299 442	308 799	3.1	726 027	753 945	3.8	100.0
	Aircraft Movements	66 225	66 369	0.2	66 167	66 216	0.1	132 392	132 585	0.1	100.0

(a) Freighter operations only - during March, April and May 2006.

TABLE 5 SCHEDULED INTERNATIONAL TRAFFIC BY CITY PAIRS: Year ended June

Foreign Port	Australian Port	Passengers						Freight (tonnes)					
		2006			2007			2006			2007		
		Inbound	Outbound	Total	Inbound	Outbound	Total	Inbound	Outbound	Total	Inbound	Outbound	Total
Auckland	Adelaide	19 683	18 941	38 624	33 065	33 195	66 260	124.5	59.0	183.4	137.4	215.8	353.2
Denpasar	"	9 099	8 645	17 744	1 395	1 355	2 750	203.2	37.5	240.7	51.4	10.4	61.8
Hong Kong	"	17 492	12 168	29 660	24 850	17 494	42 344	686.7	572.5	1 259.3	780.9	750.0	1 530.9
Jakarta	"	0	0	0	0	0	0	0.0	0.0	0.0	0.0	0.0	0.0
Kuala Lumpur	"	47 731	45 889	93 620	45 700	44 173	89 873	1 690.4	731.8	2 422.2	2 085.0	609.5	2 694.5
Singapore	"	85 660	81 756	167 416	125 006	115 127	240 133	5 493.4	7 443.2	12 936.7	6 291.4	7 736.5	14 027.9
Total	Adelaide	179 665	167 399	347 064	230 016	211 344	441 360	8 198.3	8 844.1	17 042.3	9 346.1	9 322.2	18 668.3
Anchorage	Brisbane	0	0	0	0	0	0	0.0	0.0	0.0	0.0	0.0	0.0
Auckland	"	367 627	386 846	754 473	392 407	404 916	797 323	10 144.1	9 580.6	19 724.7	9 152.3	8 451.8	17 604.1
Bahrain	"	0	0	0	0	0	0	0.0	0.0	0.0	96.7	0.0	96.7
Bandar Seri Begawan	"	15 413	15 451	30 864	14 908	13 335	28 243	294.8	951.1	1 246.0	324.5	1 009.7	1 334.2
Bangkok	"	39 814	39 460	79 274	59 262	61 320	120 582	1 759.9	810.7	2 570.6	2 411.1	1 583.2	3 994.3
Cebu	"	0	0	0	0	0	0	0.0	19.5	19.5	0.0	0.0	0.0
Chicago	"	0	0	0	0	0	0	0.0	0.0	0.0	3.4	0.0	3.4
Christchurch	"	139 682	139 760	279 442	162 782	162 492	325 274	453.2	460.4	913.6	554.6	506.7	1 061.3
Denpasar	"	24 920	23 835	48 755	10 368	10 164	20 532	663.1	222.6	885.7	386.4	113.0	499.4
Dubai	"	69 523	70 984	140 507	78 197	78 809	157 006	1 411.7	1 947.2	3 358.9	1 638.1	2 134.9	3 773.0
Dunedin	"	20 855	21 989	42 844	19 856	19 885	39 741	0.0	0.0	0.0	0.0	0.0	0.0
Frankfurt	"	0	0	0	0	0	0	0.0	0.0	0.0	0.0	0.0	0.0
Hamilton	"	19 036	19 770	38 806	18 443	19 142	37 585	0.0	0.0	0.0	0.0	0.0	0.0
Hong Kong	"	112 176	104 713	216 889	118 898	110 780	229 678	6 023.3	3 509.7	9 533.1	5 627.3	3 716.0	9 343.3
Honiara	"	12 538	11 860	24 398	16 296	16 627	32 923	100.8	41.6	142.4	120.0	115.3	235.3
Honolulu	"	0	0	0	0	0	0	0.0	0.0	0.0	1.8	0.0	1.8
Indianapolis	"	0	0	0	0	0	0	0.0	0.0	0.0	160.3	165.4	325.7
Jakarta	"	0	0	0	0	0	0	0.0	0.0	0.0	0.0	120.0	120.0
Kuala Lumpur	"	61 328	61 395	122 723	63 314	64 759	128 073	2 454.3	1 799.5	4 253.8	2 647.9	3 325.2	5 973.1
Los Angeles	"	83 506	85 331	168 837	83 478	88 137	171 615	1 028.1	894.5	1 922.6	845.6	983.3	1 829.0
Majuro	"	0	0	0	0	344	344	0.0	0.0	0.0	0.0	6.8	6.8
Manila	"	7 177	7 197	14 374	6 797	6 817	13 614	20.0	81.1	101.1	24.0	70.4	94.4
Nadi	"	67 001	69 529	136 530	70 692	72 714	143 406	204.5	401.9	606.4	184.5	476.1	660.5
Nauru	"	2 953	2 883	5 836	2 583	2 507	5 090	7.4	125.9	133.3	3.4	75.5	78.9
New York	"	3	0	3	2	0	2	0.0	0.0	0.0	0.0	8.2	8.2
Noumea	"	18 856	20 659	39 515	19 911	21 404	41 315	9.6	143.0	152.6	11.9	152.0	163.8
Osaka	"	80 908	26 375	107 283	72 948	22 075	95 023	784.5	689.6	1 474.1	713.2	989.4	1 702.6
Palmerston	"	22 489	22 141	44 630	22 219	22 378	44 597	0.0	0.0	0.0	0.0	0.0	0.0
Port Moresby	"	30 969	37 191	68 160	39 668	44 294	83 962	1 113.1	2 976.7	4 089.8	544.3	2 244.3	2 788.6
Port Vila	"	21 959	22 045	44 004	28 509	28 959	57 468	46.6	149.7	196.3	31.9	210.5	242.3
Queenstown	"	2 904	3 047	5 951	4 104	4 696	8 800	0.0	0.0	0.0	0.0	0.0	0.0
San Francisco	"	0	0	0	9	0	9	0.0	0.0	0.0	0.0	0.0	0.0
Seoul	"	35 906	33 813	69 719	46 703	43 371	90 074	703.7	1 090.8	1 794.4	1 080.2	1 233.9	2 314.0
Shanghai	"	0	0	0	1 548	1 518	3 066	0.0	0.0	0.0	27.7	0.0	27.7
Singapore	"	345 223	331 915	677 138	356 334	339 686	696 020	11 617.0	11 196.0	22 813.1	11 845.6	12 160.1	24 005.6
Taipei	"	56 438	56 384	112 822	61 278	62 960	124 238	3 219.7	961.9	4 181.7	3 052.5	926.4	3 978.9
Tokyo	"	119 048	122 300	241 348	123 365	124 588	247 953	2 795.1	2 199.0	4 994.0	3 693.3	2 466.5	6 159.9
Toledo	"	0	0	0	0	0	0	0.0	0.0	0.0	0.0	0.0	0.0

TABLE 5 SCHEDULED INTERNATIONAL TRAFFIC BY CITY PAIRS: Year ended June

Foreign Port	Australian Port	Passengers						Freight (tonnes)					
		2006			2007			2006			2007		
		Inbound	Outbound	Total	Inbound	Outbound	Total	Inbound	Outbound	Total	Inbound	Outbound	Total
Wellington	Brisbane	66 123	65 643	131 766	71 015	71 335	142 350	54.2	48.6	102.8	92.0	56.6	148.6
Total	Brisbane	1 844 375	1 802 516	3 646 891	1 965 894	1 920 012	3 885 906	44 908.7	40 301.6	85 210.3	45 274.4	43 300.9	88 575.3
Auckland	Cairns	22 496	24 801	47 297	23 050	25 019	48 069	122.6	500.7	623.4	112.7	279.6	392.2
Fukuoka	"	17 281	17 493	34 774	0	0	0	23.2	169.8	193.0	0.0	0.0	0.0
Guam	"	12 050	12 749	24 799	11 521	11 615	23 136	4.1	61.0	65.2	4.7	27.7	32.4
Hong Kong	"	51 085	48 445	99 530	26 424	25 131	51 555	715.8	2 921.6	3 637.3	269.5	2 366.9	2 636.4
Nagoya	"	68 445	67 456	135 901	62 004	62 451	124 455	201.4	402.0	603.3	853.4	476.1	1 329.5
Osaka	"	60 555	54 244	114 799	58 402	54 659	113 061	369.7	1 532.3	1 902.0	1 120.4	1 095.3	2 215.6
Port Moresby	"	31 492	24 772	56 264	32 234	25 926	58 160	128.3	419.8	548.1	113.0	317.3	430.3
Sapporo	"	6 638	7 526	14 164	4 126	4 668	8 794	6.8	13.8	20.7	0.9	0.7	1.6
Shanghai	"	0	0	0	0	0	0	0.0	0.0	0.0	0.0	0.0	0.0
Singapore	"	36 643	42 355	78 998	30 555	35 562	66 117	568.0	342.6	910.6	144.7	25.8	170.5
Tokyo	"	126 038	123 385	249 423	120 274	116 043	236 317	1 343.7	1 756.7	3 100.4	314.1	495.1	809.3
Total	Cairns	432 723	423 226	855 949	368 590	361 074	729 664	3 483.7	8 120.3	11 604.0	2 933.4	5 084.4	8 017.8
Bandar Seri Begawan	Darwin	7 065	6 516	13 581	4 803	4 671	9 474	19.8	4.6	24.4	20.4	5.5	25.9
Bombay	"	0	1 313	1 313	0	3 676	3 676	0.0	3.9	3.9	0.0	47.9	47.9
Chicago	"	0	0	0	0	0	0	0.0	0.0	0.0	0.0	0.0	0.0
Denpasar	"	12 021	13 423	25 444	14 722	15 887	30 609	2.3	6.3	8.6	0.1	3.7	3.8
Frankfurt	"	0	0	0	0	0	0	0.0	0.0	0.0	0.0	0.0	0.0
Hong Kong	"	0	0	0	0	0	0	0.0	0.0	0.0	0.0	0.0	0.0
Jakarta	"	0	0	0	0	0	0	0.0	0.0	0.0	0.0	0.0	0.0
Kupang	"	1 300	1 885	3 185	1 332	1 842	3 174	0.0	0.0	0.0	0.0	0.0	0.0
London	"	0	0	0	3	58	61	0.0	0.0	0.0	0.0	0.0	0.0
Manila	"	18	0	18	0	0	0	0.0	0.0	0.0	0.0	0.0	0.0
New York	"	0	0	0	0	0	0	0.0	0.0	0.0	0.0	0.0	0.0
Shanghai	"	0	0	0	0	0	0	68.1	0.0	68.1	0.0	0.0	0.0
Singapore	"	37 936	34 788	72 724	44 802	42 421	87 223	307.6	143.7	451.4	128.8	120.7	249.6
Tokyo	"	0	189	189	0	0	0	0.0	0.0	0.0	0.0	0.0	0.0
Total	Darwin	58 340	58 114	116 454	65 662	68 555	134 217	397.9	158.5	556.4	149.3	177.9	327.2
Auckland	Gold Coast/Coolangatta	44 040	44 684	88 724	43 631	45 220	88 851	0.2	0.9	1.1	1.6	0.5	2.1
Christchurch	"	32 742	31 660	64 402	29 661	28 497	58 158	0.0	0.0	0.0	0.0	0.0	0.0
Dunedin	"	2 133	2 104	4 237	1 552	1 697	3 249	0.0	0.0	0.0	0.0	0.0	0.0
Fukuoka	"	22	0	22	0	0	0	0.0	0.0	0.0	0.0	0.0	0.0
Hamilton	"	10 081	10 305	20 386	11 216	10 724	21 940	0.0	0.0	0.0	0.0	0.0	0.0
Osaka	"	6 112	8 733	14 845	0	0	0	0.0	62.0	62.0	0.0	0.0	0.0
Tokyo	"	0	0	0	209	0	209	0.0	0.0	0.0	0.0	0.0	0.0
Wellington	"	8 967	8 912	17 879	10 364	10 049	20 413	0.0	0.0	0.0	0.0	0.0	0.0
Total	Gold Coast/Coolangatta	104 097	106 398	210 495	96 633	96 187	192 820	0.2	62.9	63.1	1.6	0.5	2.1
Anchorage	Melbourne	0	0	0	0	0	0	0.0	0.0	0.0	0.0	0.0	0.0
Auckland	"	331 236	323 839	655 075	338 106	335 420	673 526	16 850.5	16 794.4	33 644.8	15 895.7	16 776.2	32 671.9
Bahrain	"	0	0	0	0	0	0	0.0	0.0	0.0	0.0	0.0	0.0
Bangkok	"	105 247	95 905	201 152	150 633	154 611	305 244	5 786.3	4 517.6	10 303.9	7 333.6	6 141.1	13 474.7
Beijing	"	13 718	11 826	25 544	14 796	10 064	24 860	54.4	147.3	201.7	74.1	175.1	249.2
Bombay	"	1 306	270	1 576	271	0	271	13.2	2.7	15.9	1.8	0.0	1.8
Chicago	"	31	0	31	19	0	19	4 811.9	0.0	4 811.9	5 920.1	1.6	5 921.6

TABLE 5 SCHEDULED INTERNATIONAL TRAFFIC BY CITY PAIRS: Year ended June

Foreign Port	Australian Port	Passengers						Freight (tonnes)					
		2006			2007			2006			2007		
		Inbound	Outbound	Total	Inbound	Outbound	Total	Inbound	Outbound	Total	Inbound	Outbound	Total
Christchurch	Melbourne	123 351	124 599	247 950	132 542	132 894	265 436	753.8	563.0	1 316.8	604.7	688.4	1 293.1
Denpasar	"	42 924	41 877	84 801	47 250	47 664	94 914	1 192.8	1 487.3	2 680.0	1 301.0	992.9	2 293.9
Dubai	"	137 904	138 098	276 002	147 083	139 939	287 022	5 420.8	7 078.9	12 499.7	5 992.7	7 443.7	13 436.4
Dunedin	"	7 124	7 029	14 153	4 677	4 524	9 201	0.0	0.0	0.0	0.0	0.0	0.0
Frankfurt	"	0	0	0	13	0	13	79.2	125.8	205.0	79.8	37.3	117.1
Guangzhou	"	22 130	16 107	38 237	20 342	14 852	35 194	643.7	131.3	775.0	426.2	76.0	502.2
Hamilton	"	8 524	8 371	16 895	4 537	4 524	9 061	0.0	0.0	0.0	0.0	0.0	0.0
Hanoi	"	4 258	5 190	9 448	4 421	5 582	10 003	0.0	24.7	24.7	0.0	17.9	17.9
Ho Chi Minh City	"	35 215	31 692	66 907	36 945	33 203	70 148	1 138.0	299.7	1 437.7	978.4	160.8	1 139.2
Hong Kong	"	212 360	203 331	415 691	185 092	190 671	375 763	18 312.7	14 669.2	32 981.8	16 459.9	13 347.6	29 807.5
Honolulu	"	73	0	73	8 513	8 443	16 956	0.0	0.0	0.0	185.2	44.2	229.4
Jakarta	"	0	0	0	219	212	431	0.0	0.0	0.0	2.0	0.6	2.6
Kuala Lumpur	"	165 533	163 342	328 875	181 103	173 970	355 073	9 352.3	5 591.0	14 943.2	13 704.5	7 405.2	21 109.6
London	"	111 009	113 541	224 550	115 229	114 754	229 983	3 516.9	652.3	4 169.3	1 864.6	421.0	2 285.6
Los Angeles	"	155 473	147 889	303 362	165 971	162 035	328 006	3 245.8	4 453.6	7 699.5	3 904.4	4 914.4	8 818.8
Luxembourg	"	0	0	0	0	0	0	5 005.7	0.0	5 005.7	4 537.4	35.7	4 573.1
Manila	"	14 130	11 644	25 774	16 041	12 765	28 806	652.7	376.4	1 029.1	523.8	240.4	764.2
Mauritius	"	6 943	7 588	14 531	7 504	7 598	15 102	129.5	156.0	285.5	256.9	201.0	457.9
Milan	"	0	0	0	0	0	0	0.0	0.0	0.0	0.0	104.7	104.7
Nadi	"	48 076	49 564	97 640	37 168	36 258	73 426	1 139.6	1 462.4	2 601.9	942.0	1 525.8	2 467.8
Nagoya	"	0	0	0	0	0	0	0.0	0.0	0.0	0.0	0.0	0.0
New York	"	2 056	2 632	4 688	1 803	2 347	4 150	398.0	0.0	398.0	463.6	12.3	475.8
Palmerston	"	7 108	6 861	13 969	4 710	4 331	9 041	0.0	0.0	0.0	0.0	0.0	0.0
Phuket	"	0	8 563	8 563	0	0	0	0.0	0.3	0.3	0.0	0.0	0.0
Queenstown	"	1 186	1 381	2 567	2 619	2 833	5 452	0.0	0.0	0.0	0.0	0.0	0.0
Rarotonga	"	553	603	1 156	0	409	409	0.0	0.0	0.0	0.0	0.0	0.0
San Francisco	"	405	134	539	5 162	6 011	11 173	0.8	6.4	7.2	207.0	44.5	251.5
Sapporo	"	0	0	0	889	772	1 661	0.0	0.0	0.0	0.0	0.3	0.3
Shanghai	"	39 038	37 749	76 787	46 053	33 940	79 993	1 284.3	801.4	2 085.7	1 157.2	613.3	1 770.5
Singapore	"	422 711	395 992	818 703	436 532	408 063	844 595	25 935.0	27 630.9	53 565.8	27 088.9	28 045.5	55 134.4
Tianjin	"	0	0	0	0	0	0	0.0	60.2	60.2	0.0	62.3	62.3
Tokyo	"	48 137	38 038	86 175	45 063	33 692	78 755	1 943.7	1 826.7	3 770.4	1 786.0	1 790.9	3 577.0
Vancouver	"	9	57	66	435	542	977	0.0	0.0	0.0	10.1	17.4	27.5
Vienna	"	30 552	32 652	63 204	21 177	19 515	40 692	0.0	0.0	0.0	0.0	0.0	0.0
Wellington	"	63 485	65 099	128 584	66 304	67 891	134 195	265.3	296.7	562.1	174.0	291.1	465.0
Total	Melbourne	2 161 805	2 091 463	4 253 268	2 249 222	2 170 329	4 419 551	107 926.8	89 156.2	197 083.0	111 875.7	91 629.1	203 504.7
Auckland	Norfolk Island	9 654	9 872	19 526	9 001	9 118	18 119	90.6	14.3	104.9	91.3	16.4	107.8
Total	Norfolk Island	9 654	9 872	19 526	9 001	9 118	18 119	90.6	14.3	104.9	91.3	16.4	107.8
Anchorage	Perth	0	0	0	0	0	0	0.0	0.0	0.0	0.0	0.0	0.0
Auckland	"	54 432	52 832	107 264	60 537	58 224	118 761	2 304.4	1 090.2	3 394.6	2 308.7	1 304.4	3 613.1
Bandar Seri Begawan	"	26 875	27 167	54 042	30 644	28 620	59 264	151.9	666.0	817.9	184.4	545.6	730.0
Bangkok	"	46 335	34 831	81 166	63 644	41 278	104 922	1 500.0	1 612.2	3 112.2	1 230.7	1 335.5	2 566.3
Chicago	"	0	0	0	0	0	0	0.0	0.0	0.0	0.0	0.0	0.0
Christchurch	"	0	0	0	0	0	0	0.0	0.0	0.0	79.9	0.0	79.9
Denpasar	"	80 224	79 465	159 689	76 434	78 919	155 353	75.9	142.3	218.2	98.0	60.5	158.5

TABLE 5 SCHEDULED INTERNATIONAL TRAFFIC BY CITY PAIRS: Year ended June

Foreign Port	Australian Port	Passengers						Freight (tonnes)					
		2006			2007			2006			2007		
		Inbound	Outbound	Total	Inbound	Outbound	Total	Inbound	Outbound	Total	Inbound	Outbound	Total
Dubai	Perth	88 166	91 407	179 573	146 514	135 521	282 035	2 022.8	2 680.1	4 702.9	3 725.6	4 051.3	7 776.9
Durban	"	0	0	0	0	0	0	0.0	0.0	0.0	1.2	0.0	1.2
Frankfurt	"	0	0	0	0	0	0	0.0	0.0	0.0	0.0	0.0	0.0
Hong Kong	"	72 558	63 053	135 611	77 695	69 975	147 670	2 791.8	3 956.3	6 748.1	2 987.8	2 788.2	5 776.0
Jakarta	"	14 323	14 391	28 714	22 127	21 145	43 272	28.0	1.9	29.9	55.4	15.7	71.1
Johannesburg	"	48 811	41 726	90 537	50 758	44 135	94 893	893.8	2 369.5	3 263.3	773.8	2 191.6	2 965.4
Kuala Lumpur	"	102 634	99 325	201 959	102 939	104 387	207 326	2 883.0	1 007.9	3 890.9	4 117.8	1 348.3	5 466.1
Kuching	"	5 483	6 271	11 754	0	0	0	0.7	51.1	51.8	0.0	0.0	0.0
London	"	21 167	21 149	42 316	0	0	0	358.1	98.8	456.9	0.0	0.0	0.0
Mauritius	"	9 669	8 993	18 662	14 505	15 141	29 646	49.0	267.2	316.2	179.7	377.7	557.4
Mombasa	"	0	0	0	0	0	0	0.0	0.0	0.0	99.4	0.0	99.4
Osaka	"	158	0	158	0	0	0	0.0	0.0	0.0	0.0	0.0	0.0
Phuket	"	0	11 276	11 276	0	22 561	22 561	0.0	10.9	10.9	0.0	13.1	13.1
Shanghai	"	0	0	0	0	0	0	0.0	0.0	0.0	0.0	0.0	0.0
Singapore	"	411 955	390 798	802 753	448 523	422 151	870 674	12 755.2	18 008.2	30 763.4	15 594.7	17 756.7	33 351.3
Tokyo	"	26 960	27 316	54 276	27 621	27 723	55 344	982.4	929.7	1 912.0	760.5	799.6	1 560.1
Total	Perth	1 009 750	970 000	1 979 750	1 121 941	1 069 780	2 191 721	26 797.2	32 892.2	59 689.4	32 197.6	32 588.1	64 785.8
Abu Dhabi	Sydney	0	0	0	5 938	8 711	14 649	0.0	0.0	0.0	266.5	445.2	711.7
Almaty	"	0	0	0	0	0	0	0.0	15.4	15.4	0.0	0.0	0.0
Amsterdam	"	0	0	0	0	0	0	7 153.8	1 393.6	8 547.4	7 703.8	1 352.2	9 056.0
Anchorage	"	0	0	0	0	0	0	0.0	0.0	0.0	0.0	1.1	1.1
Apia	"	10 720	11 697	22 417	17 089	16 967	34 056	16.8	22.3	39.1	92.1	35.7	127.8
Atlanta	"	0	0	0	0	0	0	0.0	0.0	0.0	0.0	0.0	0.0
Auckland	"	603 810	611 742	1 215 552	603 745	606 883	1 210 628	27 110.0	34 160.3	61 270.3	25 900.4	33 897.6	59 798.0
Bahrain	"	52 494	52 364	104 858	46 236	41 094	87 330	1 635.7	2 337.4	3 973.1	1 600.7	1 872.3	3 473.1
Bandar Seri Begawan	"	18 286	17 709	35 995	19 367	16 485	35 852	922.7	952.0	1 874.7	980.5	867.8	1 848.2
Bangkok	"	267 188	253 591	520 779	305 479	288 447	593 926	10 130.7	3 708.3	13 839.0	10 566.7	4 399.8	14 966.5
Beijing	"	38 777	38 685	77 462	60 984	59 089	120 073	348.6	588.6	937.2	665.5	911.7	1 577.2
Bombay	"	33 119	30 783	63 902	33 018	26 225	59 243	674.1	255.9	930.0	435.7	337.9	773.6
Buenos Aires	"	20 243	19 795	40 038	19 858	18 720	38 578	191.0	273.8	464.8	122.9	202.4	325.2
Cebu	"	0	0	0	0	0	0	0.0	0.0	0.0	0.0	0.0	0.0
Chicago	"	13 835	15 287	29 122	12 206	12 328	24 534	8 387.3	64.4	8 451.7	8 256.3	20.6	8 276.9
Christchurch	"	265 494	255 614	521 108	262 786	255 068	517 854	6 541.7	5 105.3	11 647.0	6 182.0	4 827.7	11 009.7
Denpasar	"	64 879	64 801	129 680	61 410	62 745	124 155	1 761.3	860.5	2 621.8	1 901.6	649.1	2 550.7
Dohar	"	0	0	0	0	0	0	0.0	0.0	0.0	0.0	102.0	102.0
Dubai	"	121 647	125 147	246 794	133 259	133 940	267 199	5 287.0	4 144.9	9 431.9	5 990.4	4 805.8	10 796.2
Dunedin	"	13 777	13 381	27 158	13 538	13 682	27 220	0.0	0.0	0.0	0.0	0.0	0.0
Durban	"	0	0	0	0	0	0	0.0	0.0	0.0	0.0	181.5	181.5
Fairbanks	"	0	0	0	0	0	0	0.0	0.0	0.0	0.0	0.0	0.0
Frankfurt	"	40 529	42 297	82 826	45 312	46 347	91 659	5 298.6	173.3	5 471.9	4 996.3	220.9	5 217.2
Guangzhou	"	43 582	44 796	88 378	44 175	44 945	89 120	2 497.5	96.6	2 594.0	2 475.3	144.7	2 619.9
Hamilton	"	15 735	15 742	31 477	13 999	14 702	28 701	0.0	0.0	0.0	0.0	0.0	0.0
Hanoi	"	6 753	7 936	14 689	8 718	10 669	19 387	0.0	9.3	9.3	0.0	18.7	18.7
Ho Chi Minh City	"	35 607	35 407	71 014	56 653	53 574	110 227	1 583.0	152.5	1 735.5	2 214.4	417.4	2 631.8
Hong Kong	"	416 297	409 593	825 890	462 258	430 049	892 307	32 374.5	11 460.2	43 834.8	31 491.0	13 116.7	44 607.8

TABLE 5 SCHEDULED INTERNATIONAL TRAFFIC BY CITY PAIRS: Year ended June

Foreign Port	Australian Port	Passengers						Freight (tonnes)					
		2006			2007			2006			2007		
		Inbound	Outbound	Total	Inbound	Outbound	Total	Inbound	Outbound	Total	Inbound	Outbound	Total
Honolulu	Sydney	108 310	98 331	206 641	104 309	96 341	200 650	2 840.7	3 362.6	6 203.3	3 102.4	3 382.8	6 485.2
Indianapolis	"	0	0	0	0	0	0	0.0	0.0	0.0	0.0	0.0	0.0
Jakarta	"	29 895	29 220	59 115	34 189	32 847	67 036	481.9	1 034.4	1 516.3	523.6	721.8	1 245.4
Johannesburg	"	59 947	57 180	117 127	70 570	65 038	135 608	1 609.7	412.1	2 021.8	1 507.0	355.4	1 862.4
Kuala Lumpur	"	180 280	172 382	352 662	179 890	170 450	350 340	12 599.3	1 821.5	14 420.9	21 851.5	2 686.7	24 538.3
Kuching	"	0	1 247	1 247	0	0	0	0.0	26.3	26.3	0.0	0.0	0.0
London	"	242 921	253 988	496 909	272 435	276 889	549 324	9 626.5	2 560.4	12 186.9	9 438.3	2 757.3	12 195.7
Los Angeles	"	320 151	327 908	648 059	310 915	311 828	622 743	22 007.9	6 300.3	28 308.2	19 551.2	5 436.2	24 987.4
Louisville	"	0	0	0	0	0	0	5 964.6	0.0	5 964.6	9 327.4	0.0	9 327.4
Manila	"	53 724	51 982	105 706	55 154	53 164	108 318	1 145.6	451.7	1 597.3	1 349.7	818.7	2 168.4
Mauritius	"	7 441	6 112	13 553	8 036	6 375	14 411	66.2	44.9	111.1	150.1	119.7	269.8
Milan	"	0	0	0	0	0	0	0.0	0.0	0.0	0.0	0.0	0.0
Nadi	"	140 081	137 943	278 024	138 860	135 338	274 198	3 174.5	2 438.6	5 613.1	2 506.9	2 313.5	4 820.4
Nagoya	"	6 855	6 870	13 725	0	0	0	538.0	205.2	743.1	0.0	0.0	0.0
New York	"	22 889	24 488	47 377	31 708	31 467	63 175	5 887.7	298.5	6 186.2	5 867.5	210.8	6 078.3
Noumea	"	43 972	42 643	86 615	47 580	46 228	93 808	27.8	693.2	721.0	46.3	819.0	865.3
Osaka	"	37 719	80 902	118 621	31 839	74 727	106 566	1 237.4	1 036.9	2 274.2	1 831.1	989.3	2 820.5
Palmerston	"	10 330	10 335	20 665	10 948	10 926	21 874	0.0	0.0	0.0	0.0	0.0	0.0
Papeete	"	17 214	19 386	36 600	24 195	24 100	48 295	814.0	482.7	1 296.6	1 197.2	683.4	1 880.6
Phuket	"	2 726	7 783	10 509	20 176	22 388	42 564	24.0	4.7	28.7	346.3	12.7	359.0
Port Moresby	"	7 425	8 645	16 070	8 348	10 211	18 559	293.6	252.1	545.7	168.8	151.2	320.0
Port Vila	"	18 979	18 308	37 287	24 149	23 225	47 374	119.1	264.3	383.4	142.8	244.5	387.3
Queenstown	"	16 829	18 081	34 910	18 573	19 195	37 768	0.0	0.2	0.2	0.0	1.0	1.0
Rarotonga	"	0	0	0	326	115	441	0.0	0.0	0.0	0.0	0.0	0.0
San Francisco	"	106 387	108 909	215 296	131 262	136 313	267 575	654.1	3 592.5	4 246.5	979.6	3 698.3	4 677.9
Santiago	"	25 405	24 338	49 743	34 862	36 154	71 016	1 442.3	688.4	2 130.7	2 122.4	931.5	3 054.0
Sapporo	"	0	0	0	0	0	0	0.0	0.0	0.0	0.0	36.9	36.9
Seoul	"	158 408	154 673	313 081	179 641	178 490	358 131	10 810.9	4 951.5	15 762.4	12 444.7	7 020.9	19 465.6
Shanghai	"	110 630	101 095	211 725	124 497	116 643	241 140	8 144.0	1 215.8	9 359.8	7 014.0	1 387.7	8 401.8
Sharjah	"	0	0	0	0	0	0	0.0	242.3	242.3	0.0	386.3	386.3
Singapore	"	490 423	466 745	957 168	510 352	486 030	996 382	23 807.4	12 026.0	35 833.3	20 740.7	15 144.7	35 885.4
Subic Bay	"	0	0	0	0	0	0	0.0	2 998.1	2 998.1	0.0	1 964.7	1 964.7
Suva	"	6 285	8 741	15 026	6 051	8 260	14 311	0.2	18.6	18.8	0.4	15.0	15.5
Taipei	"	56 792	53 597	110 389	38 604	41 380	79 984	2 002.8	1 096.3	3 099.2	760.2	295.0	1 055.2
Tokyo	"	216 796	231 878	448 674	209 827	235 937	445 764	4 827.5	5 089.7	9 917.2	5 869.6	4 791.9	10 661.6
Toledo	"	0	0	0	0	0	0	2 278.4	0.0	2 278.4	2 276.7	0.0	2 276.7
Tongatapu	"	6 166	6 700	12 866	10 157	10 042	20 199	7.5	8.7	16.1	40.1	26.4	66.5
Toronto	"	1 603	1 452	3 055	0	0	0	46.2	2.3	48.5	0.0	0.0	0.0
Vancouver	"	49 779	54 455	104 234	49 601	55 140	104 741	3.4	11.3	14.7	26.4	100.1	126.5
Vienna	"	66 651	71 938	138 589	46 187	42 448	88 635	0.0	0.0	0.0	0.0	0.0	0.0
Wellington	"	117 276	119 871	237 147	121 649	125 132	246 781	384.0	434.9	818.8	251.7	346.5	598.3
Total	Sydney	4 823 061	4 844 493	9 667 554	5 080 918	5 043 491	10 124 409	234 781.5	119 841.4	354 622.9	243 277.1	126 678.9	369 956.0
Anchorage	Townsville (a)	0	0	0	0	0	0	0.0	0.0	0.0	0.0	0.0	0.0
Chicago	"	0	0	0	0	0	0	0.0	0.0	0.0	0.0	0.0	0.0
Hong Kong	"	0	0	0	0	0	0	0.0	0.0	0.0	0.0	0.0	0.0

TABLE 5 SCHEDULED INTERNATIONAL TRAFFIC BY CITY PAIRS: Year ended June

Foreign Port	Australian Port	Passengers						Freight (tonnes)					
		2006			2007			2006			2007		
		Inbound	Outbound	Total	Inbound	Outbound	Total	Inbound	Outbound	Total	Inbound	Outbound	Total
Honolulu	Townsville (a)	0	0	0	0	0	0	0.0	0.0	0.0	0.0	0.0	0.0
New York	"	0	0	0	0	0	0	0.0	0.0	0.0	0.0	0.0	0.0
Shanghai	"	0	0	0	0	0	0	0.0	0.0	0.0	0.0	0.0	0.0
Sharjah	"	0	0	0	0	0	0	0.0	50.6	50.6	0.0	0.0	0.0
Singapore	"	0	0	0	0	0	0	0.0	0.0	0.0	0.0	0.0	0.0
Total	Townsville	0	0	0	0	0	0	0.0	50.6	50.6	0.0	0.0	0.0
Abu Dhabi	Australia	0	0	0	5 938	8 711	14 649	0.0	0.0	0.0	266.5	445.2	711.7
Almaty	"	0	0	0	0	0	0	0.0	15.4	15.4	0.0	0.0	0.0
Amsterdam	"	0	0	0	0	0	0	7 153.8	1 393.6	8 547.4	7 703.8	1 352.2	9 056.0
Anchorage	"	0	0	0	0	0	0	0.0	0.0	0.0	0.0	1.1	1.1
Apia	"	10 720	11 697	22 417	17 089	16 967	34 056	16.8	22.3	39.1	92.1	35.7	127.8
Atlanta	"	0	0	0	0	0	0	0.0	0.0	0.0	0.0	0.0	0.0
Auckland	"	1 452 978	1 473 557	2 926 535	1 503 542	1 517 995	3 021 537	56 746.8	62 200.3	118 947.2	53 600.1	60 942.2	114 542.3
Bahrain	"	52 494	52 364	104 858	46 236	41 094	87 330	1 635.7	2 337.4	3 973.1	1 697.4	1 872.3	3 569.7
Bandar Seri Begawan	"	67 639	66 843	134 482	69 722	63 111	132 833	1 389.3	2 573.7	3 962.9	1 509.8	2 428.6	3 938.4
Bangkok	"	458 584	423 787	882 371	579 018	545 656	1 124 674	19 177.0	10 648.8	29 825.7	21 542.2	13 459.6	35 001.7
Beijing	"	52 495	50 511	103 006	75 780	69 153	144 933	403.0	735.9	1 138.9	739.6	1 086.8	1 826.5
Bombay	"	34 425	32 366	66 791	33 289	29 901	63 190	687.4	262.5	949.8	437.5	385.8	823.4
Buenos Aires	"	20 243	19 795	40 038	19 858	18 720	38 578	191.0	273.8	464.8	122.9	202.4	325.2
Cebu	"	0	0	0	0	0	0	0.0	19.5	19.5	0.0	0.0	0.0
Chicago	"	13 866	15 287	29 153	12 225	12 328	24 553	13 199.1	64.4	13 263.5	14 179.7	22.2	14 201.9
Christchurch	"	561 269	551 633	1 112 902	587 771	578 951	1 166 722	7 748.7	6 128.7	13 877.4	7 421.2	6 022.8	13 443.9
Denpasar	"	234 067	232 046	466 113	211 579	216 734	428 313	3 898.6	2 756.4	6 655.1	3 738.6	1 829.5	5 568.1
Dohar	"	0	0	0	0	0	0	0.0	0.0	0.0	0.0	102.0	102.0
Dubai	"	417 240	425 636	842 876	505 053	488 209	993 262	14 142.4	15 851.2	29 993.6	17 346.9	18 435.7	35 782.5
Dunedin	"	43 889	44 503	88 392	39 623	39 788	79 411	0.0	0.0	0.0	0.0	0.0	0.0
Durban	"	0	0	0	0	0	0	0.0	0.0	0.0	1.2	181.5	182.7
Fairbanks	"	0	0	0	0	0	0	0.0	0.0	0.0	0.0	0.0	0.0
Frankfurt	"	40 529	42 297	82 826	45 325	46 347	91 672	5 377.8	299.2	5 676.9	5 076.1	258.2	5 334.3
Fukuoka	"	17 303	17 493	34 796	0	0	0	23.2	169.8	193.0	0.0	0.0	0.0
Guam	"	12 050	12 749	24 799	11 521	11 615	23 136	4.1	61.0	65.2	4.7	27.7	32.4
Guangzhou	"	65 712	60 903	126 615	64 517	59 797	124 314	3 141.2	227.9	3 369.1	2 901.5	220.7	3 122.2
Hamilton	"	53 376	54 188	107 564	48 195	49 092	97 287	0.0	0.0	0.0	0.0	0.0	0.0
Hanoi	"	11 011	13 126	24 137	13 139	16 251	29 390	0.0	34.0	34.0	0.0	36.7	36.7
Ho Chi Minh City	"	70 822	67 099	137 921	93 598	86 777	180 375	2 721.0	452.2	3 173.2	3 192.9	578.2	3 771.0
Hong Kong	"	881 968	841 303	1 723 271	895 217	844 100	1 739 317	60 904.8	37 089.6	97 994.4	57 616.4	36 085.5	93 701.9
Honiara	"	12 538	11 860	24 398	16 296	16 627	32 923	100.8	41.6	142.4	120.0	115.3	235.3
Honolulu	"	108 383	98 331	206 714	112 822	104 784	217 606	2 840.7	3 362.6	6 203.3	3 289.4	3 427.0	6 716.4
Indianapolis	"	0	0	0	0	0	0	0.0	0.0	0.0	160.3	165.4	325.7
Jakarta	"	44 218	43 611	87 829	56 535	54 204	110 739	509.9	1 036.3	1 546.3	581.0	858.1	1 439.1
Johannesburg	"	108 758	98 906	207 664	121 328	109 173	230 501	2 503.6	2 781.6	5 285.1	2 280.8	2 547.0	4 827.8
Kuala Lumpur	"	557 506	542 333	1 099 839	572 946	557 739	1 130 685	28 979.3	10 951.7	39 931.0	44 406.7	15 375.0	59 781.7
Kuching	"	5 483	7 518	13 001	0	0	0	0.7	77.4	78.1	0.0	0.0	0.0
Kupang	"	1 300	1 885	3 185	1 332	1 842	3 174	0.0	0.0	0.0	0.0	0.0	0.0
London	"	375 097	388 678	763 775	387 667	391 701	779 368	13 501.5	3 311.6	16 813.1	11 303.0	3 178.3	14 481.3

TABLE 5 SCHEDULED INTERNATIONAL TRAFFIC BY CITY PAIRS: Year ended June

Foreign Port	Australian Port	Passengers						Freight (tonnes)					
		2006			2007			2006			2007		
		Inbound	Outbound	Total	Inbound	Outbound	Total	Inbound	Outbound	Total	Inbound	Outbound	Total
Los Angeles	Australia	559 130	561 128	1 120 258	560 364	562 000	1 122 364	26 281.8	11 648.5	37 930.2	24 301.3	11 333.9	35 635.1
Louisville	"	0	0	0	0	0	0	5 964.6	0.0	5 964.6	9 327.4	0.0	9 327.4
Luxembourg	"	0	0	0	0	0	0	5 005.7	0.0	5 005.7	4 537.4	35.7	4 573.1
Majuro	"	0	0	0	0	344	344	0.0	0.0	0.0	0.0	6.8	6.8
Manila	"	75 049	70 823	145 872	77 992	72 746	150 738	1 818.3	909.2	2 727.5	1 897.5	1 129.6	3 027.0
Mauritius	"	24 053	22 693	46 746	30 045	29 114	59 159	244.6	468.2	712.8	586.7	698.5	1 285.1
Milan	"	0	0	0	0	0	0	0.0	0.0	0.0	0.0	104.7	104.7
Mombasa	"	0	0	0	0	0	0	0.0	0.0	0.0	99.4	0.0	99.4
Nadi	"	255 158	257 036	512 194	246 720	244 310	491 030	4 518.6	4 302.9	8 821.4	3 633.4	4 315.4	7 948.8
Nagoya	"	75 300	74 326	149 626	62 004	62 451	124 455	739.4	607.1	1 346.5	853.4	476.1	1 329.5
Nauru	"	2 953	2 883	5 836	2 583	2 507	5 090	7.4	125.9	133.3	3.4	75.5	78.9
New York	"	24 948	27 120	52 068	33 513	33 814	67 327	6 285.6	298.5	6 584.2	6 331.1	231.2	6 562.3
Noumea	"	62 828	63 302	126 130	67 491	67 632	135 123	37.5	836.2	873.7	58.2	971.0	1 029.2
Osaka	"	185 452	170 254	355 706	163 189	151 461	314 650	2 391.6	3 320.8	5 712.3	3 664.8	3 074.0	6 738.8
Palmerston	"	39 927	39 337	79 264	37 877	37 635	75 512	0.0	0.0	0.0	0.0	0.0	0.0
Papeete	"	17 214	19 386	36 600	24 195	24 100	48 295	814.0	482.7	1 296.6	1 197.2	683.4	1 880.6
Phuket	"	2 726	27 622	30 348	20 176	44 949	65 125	24.0	15.9	39.9	346.3	25.8	372.1
Port Moresby	"	69 886	70 608	140 494	80 250	80 431	160 681	1 535.0	3 648.6	5 183.6	826.1	2 712.8	3 538.9
Port Vila	"	40 938	40 353	81 291	52 658	52 184	104 842	165.7	414.0	579.7	174.7	454.9	629.6
Queenstown	"	20 919	22 509	43 428	25 296	26 724	52 020	0.0	0.2	0.2	0.0	1.0	1.0
Rarotonga	"	553	603	1 156	326	524	850	0.0	0.0	0.0	0.0	0.0	0.0
San Francisco	"	106 792	109 043	215 835	136 433	142 324	278 757	654.9	3 598.9	4 253.8	1 186.6	3 742.8	4 929.4
Santiago	"	25 405	24 338	49 743	34 862	36 154	71 016	1 442.3	688.4	2 130.7	2 122.4	931.5	3 054.0
Sapporo	"	6 638	7 526	14 164	5 015	5 440	10 455	6.8	13.8	20.7	0.9	37.9	38.9
Seoul	"	194 314	188 486	382 800	226 344	221 861	448 205	11 514.6	6 042.3	17 556.9	13 524.8	8 254.8	21 779.6
Shanghai	"	149 668	138 844	288 512	172 098	152 101	324 199	9 496.4	2 017.2	11 513.5	8 199.0	2 001.1	10 200.0
Sharjah	"	0	0	0	0	0	0	0.0	292.9	292.9	0.0	386.3	386.3
Singapore	"	1 830 551	1 744 349	3 574 900	1 952 104	1 849 040	3 801 144	80 483.7	76 790.6	157 274.2	81 834.7	80 990.0	162 824.7
Subic Bay	"	0	0	0	0	0	0	0.0	2 998.1	2 998.1	0.0	1 964.7	1 964.7
Suva	"	6 285	8 741	15 026	6 051	8 260	14 311	0.2	18.6	18.8	0.4	15.0	15.5
Taipei	"	113 230	109 981	223 211	99 882	104 340	204 222	5 222.6	2 058.3	7 280.8	3 812.7	1 221.4	5 034.2
Tianjin	"	0	0	0	0	0	0	0.0	60.2	60.2	0.0	62.3	62.3
Tokyo	"	536 979	543 106	1 080 085	526 359	537 983	1 064 342	11 892.4	11 801.7	23 694.1	12 423.7	10 344.1	22 767.8
Toledo	"	0	0	0	0	0	0	2 278.4	0.0	2 278.4	2 276.7	0.0	2 276.7
Tongatapu	"	6 166	6 700	12 866	10 157	10 042	20 199	7.5	8.7	16.1	40.1	26.4	66.5
Toronto	"	1 603	1 452	3 055	0	0	0	46.2	2.3	48.5	0.0	0.0	0.0
Vancouver	"	49 788	54 512	104 300	50 036	55 682	105 718	3.4	11.3	14.7	36.4	117.5	153.9
Vienna	"	97 203	104 590	201 793	67 364	61 963	129 327	0.0	0.0	0.0	0.0	0.0	0.0
Wellington	"	255 851	259 525	515 376	269 332	274 407	543 739	703.5	780.2	1 483.7	517.6	694.2	1 211.9
Total	Australia	10 623 470	10 473 481	21 096 951	11 187 877	10 949 890	22 137 767	426 584.8	299 442.1	726 026.8	445 146.5	308 798.5	753 945.0

Please refer to explanatory notes - paragraphs 3, 8 and 13 in particular.

(a) Freighter operations only - during March, April and May 2006.

**TABLE 6 INTERNATIONAL AIRLINES OWN STOPOVER REVENUE PASSENGERS,
AUSTRALIAN CITY PAIRS: Year ended June 2007**

City Pair Route	Total Passengers
Melbourne/Sydney	34 952
Brisbane/Sydney	21 843
Brisbane/Cairns	1 529
Adelaide/Melbourne	131
TOTAL	58 455

Notes:

1. Own Stopover Revenue Passengers : The aggregate of revenue passengers uplifted at one Australian airport and discharged (excluding transit passengers) at another Australian airport by the same foreign registered international airline on which they entered or left Australia.
2. City Pair Route represents the aggregation of passengers travelling in both directions.
3. This data is additional to the information presented in tables 1-5 which cover only those passengers travelling to/from overseas airports.

TABLE 7 TOTAL AIRCRAFT MOVEMENTS AT AUSTRALIAN INTERNATIONAL AIRPORTS BY AIRCRAFT TYPES: Year ended June 2007

Airport	Passenger Aircraft												Freighters			All Types
	32S	330	340	737	747	767	777	100	DH8	EM2	EMJ	Metro	72F	74F	M1F	
Adelaide	284	1 047		313	2	58	1 150							184		3 038
Brisbane	4 526	2 877	158	5 483	2 793	3 295	4 263	154				70		29		23 648
Cairns	733	532		246	15	4 740		883	712			164		2		8 027
Darwin	1 605	376		404	8	348				208				2		2 951
Gold Coast/Coolangatta	1 528			216												1 744
Melbourne	3 443	3 755	1 916	1 390	5 962	1 575	4 621							1 243		23 905
Norfolk Island	12			196												208
Perth	325	2 668	1 057	1 628	176	1 687	3 590							29		11 160
Sydney	6 237	8 458	4 746	4 188	16 565	9 961	4 565						476	1 791	917	57 904
Grand Total	18 693	19 713	7 877	14 064	25 521	21 664	18 189	1 037	712	208	70	164	476	3 280	917	132 585
% of All Types	14.1%	14.9%	5.9%	10.6%	19.2%	16.3%	13.7%	0.8%	0.5%	0.2%	0.1%	0.1%	0.4%	2.5%	0.7%	100.0%

NOTE:

These figures only cover scheduled operations of the airlines listed in this publication. Charter/ferry operations are not included.

Aircraft Types (all series)

Airbus	32S	330	340				
Boeing	737	747	767	777	72F	74F	
McDonnell Douglas	M11	M1F					
Fokker	F28	100					
Metro	Metro						
Embraer	EM2	EMJ					