



Australian Government

Department of Transport and Regional Services

Bureau of Transport and Regional Economics

AIR TRANSPORT STATISTICS

INTERNATIONAL AIRLINES

2002-03

**INTERNATIONAL SCHEDULED
AIR TRANSPORT**

2002-03

**BUREAU OF
TRANSPORT AND REGIONAL ECONOMICS**

**DEPARTMENT OF
TRANSPORT AND REGIONAL SERVICES**

© COMMONWEALTH OF AUSTRALIA

CANBERRA

DECEMBER 2003

ISSN 1324-5074

This work is copyright and the data contained in this publication should not be reproduced or used in any form without acknowledgment.

INQUIRIES

Should you require additional information about the statistics contained in this publication, please contact Mrs Betty Kell in Canberra by telephone (02) 6274 7791 or by facsimile (02) 6274 7727

or write to:

AVSTATS, Bureau of Transport and Regional Economics
Department of Transport and Regional Services
GPO Box 594
Canberra ACT 2601
Electronic Mail: AVSTATS@dotars.gov.au

CONTENTS

Table		Page
..	Explanatory Notes	iv-vi
..	Data Status & Airlines Commencing/Withdrawing Services	vii
..	Overview.....	viii-xi
1	Scheduled International Air Traffic to and from Australia.....	1-3
2	Scheduled Operator Market Shares and Growth	4-7
3	Airline Passenger Capacity and Utilisation to and from Australia by Operator.....	8-10
4	Australian International Airport Scheduled Traffic and Aircraft Movements.....	11-12
5	Scheduled International Passengers and Freight by City Pairs	13-21
6	International Airlines Own Stopover Revenue Passengers, Australian City Pairs	22
7	Total Aircraft Movements at Australian International Airports by Aircraft Types	23

EXPLANATORY NOTES

INTRODUCTION

1. This publication continues the series of publications on a financial year basis presenting statistical information on the scheduled operations of international airlines operating into/out of Australia.
2. The figures in this publication were obtained from reports submitted by scheduled international carriers and are the best available at the time of publication.

COVERAGE

3. These statistics show **uplift/discharge** data – These data detail, by direction, the revenue traffic between the actual points of uplift and discharge within each flight, aggregated for all flights within the period. It shows the movement of traffic between two airports not necessarily directly connected but within the same flight number. Typically, flight numbers change when an aircraft reaches its home country. This means that uplift/discharge data for the port in the operator's home country are likely to be overstated by traffic whose origin/destination point is beyond that port. For example, uplift/discharge traffic reported in this publication as Singapore could include traffic whose origin/destination is Europe.
4. These statistics cover **revenue** traffic carried by the operators of scheduled regular public international air transport services only and **do not include charter traffic**.
5. Some airlines (generally, dedicated freighter operators) operate scheduled services into Australia but operate non-scheduled services out of Australia and therefore outbound activity is not recorded in this data collection.

PRODUCTION AND INTERPRETATION

6. **Tables 1 and 2** show the country of the relevant uplift or discharge port served by that airline. For example, traffic uplifted/discharged between Sydney and Singapore by British Airways would be shown as Singapore traffic in Tables 1 and 2.
7. **Table 3** shows figures for the country of service (or route) for each airline and therefore may not equate to the data in Tables 1 and 2. For example, the British Airways UK service identified in Table 3 could include passengers uplifted or discharged in Singapore or Thailand as well as the UK; these passengers would be shown individually under those countries in Tables 1 and 2. The difference in treatment of data between Tables 1 and 2 and Table 3 is necessary in order to work out a meaningful Seat Utilisation figure for Table 3.

Figures shown in Table 3 may include **total traffic** into and out of Australia for airlines that fly through Australia (also necessary in order to work out a meaningful Seat Utilisation figure). Therefore, figures in Table 3 may not equate to figures in Tables 1 and 2. For example, passengers carried by Qantas Airways from New Zealand **via** Australia to the UK will be included in Table 3 but will not be included in Tables 1 or 2 as these passengers were not uplifted/discharged in Australia.

8. **Table 5** – shows uplift/discharge passenger and freight data for city pairs with same flight number international flight connections.
9. Where figures have been rounded, discrepancies may occur between sums of component items and totals, and in percentage changes which are derived from figures prior to rounding.
10. Published figures may be revised where figures missing at the time of publication are received or misreporting/miscalculation necessitates revisions.

DEFINITIONS

11. The following definitions have been used in this publication:
 - (a) Aircraft Movement: A landing or a take off.
 - (b) Freight: The aggregate of all revenue freight uplifted.
 - (c) Inbound: Inbound to Australia/Australian international airport.
 - (d) Mail: The aggregate of all mail uplifted.
 - (e) Outbound: Outbound from Australia/Australian international airport.
 - (f) Revenue Passengers: please refer to paragraph 12.

- (g) Seat Utilisation: The ratio of passengers carried to seats available, expressed as a percentage.
- (h) Seats Available: Generally based on standard aircraft configuration, the aggregate of seats available on all flights operated over a particular service.
- (i) Services: Scheduled flights over authorised routes which are listed according to the main ports involved.

COMPARABILITY OF DATA OVER TIME

12. Revenue Passengers:

- For July 2000 and onwards: All passengers paying any fare (frequent flyer redemption passengers are regarded as revenue passengers). In most cases, Revenue Passengers will now include all passengers excluding Free Of Charge passengers and positioning crew.
 - To December 1999: The aggregate of all passengers paying 25% or more of the standard air fare (as defined by ICAO).
 - January 2000 to June 2000: Transition period.
- The Revenue Passenger definition change could result in approximately a three per cent increase in passenger numbers over a full period (month or year).

13. Country and City data – reporting of Uplift/Discharge data by Qantas Airways:

- Prior to January 2003: Uplift/Discharge within Qantas Airways' international network.
- For January 2003 and onwards: Uplift/Discharge within flight number – as per the standard definition.

For example, what was previously reported as Adelaide to London (no direct services between these two cities) will now be reported as either Adelaide to Singapore or Melbourne/Sydney to London.

This change has been introduced in order to make the data comparable across all airlines operating services to/from Australia.

The effect of this change – comparing data under the two methods of reporting:

- Country of Port data (Tables 1 & 2) – There will be a shift in traffic to countries such as Singapore which are used as hubs and away from countries such as France, Germany and Italy which previously received traffic channelled through hubs. The total volume of traffic is not affected.
- Country of Service data (Table 3) – no change, as the Uplift/Discharge definition is not applicable to classifying the country of service.
- Australian International Airports (Table 4) – there may be a shift of traffic to the major airports.
- City Pairs (Table 5) – There will be a shift in traffic to cities such as Singapore which are used as hubs and away from cities such as Paris, Frankfurt and Rome which previously received traffic channelled through hubs. The total volume of traffic is not affected.

Prior to the change, statistics reported for city pairs without “same flight number” international flight connections mainly reflected carriage on interconnecting international services by Qantas Airways. That traffic should have been interpreted as increasing the volume of traffic between the primary international ports rather than as an indicator of traffic volumes between ports without “same flight number” international flight connections. It should be noted however, that there was no double counting of traffic.

14. Country of Service classification by Qantas Airways:

- For July 2002 and onwards: based on the foreign country where same flight number services commence or cease – as per the standard definition. For example, Sydney-Denpasar-Singapore services would be classified as Country of Service = Singapore.
- Prior to July 2002: based on Qantas classification – this mainly affected Indonesia and Singapore Countries of Service. For example, Sydney-Denpasar-Singapore services were classified as Country of Service = Indonesia.

15. Airline data – Reporting of code share services:

Reporting of traffic split by airline code for code share arrangements was discontinued as of June 2000. For July 2000 and onwards, ALL traffic carried is reported under the operating airline regardless of code share arrangements.

Monthly airline market share figures for July 2001 onwards will be comparable with the same month in the previous year. However, these figures may not be comparable with monthly data prior to July 2000.

SYMBOLS AND OTHER USAGE

- nil or zero
- .. not applicable

INDEMNITY STATEMENT

The Bureau of Transport and Regional Economics has taken due care in preparing the information contained in this publication. However, noting that data have been provided by third parties, the Commonwealth gives no warranty as to the accuracy, reliability, fitness for purpose, or otherwise of the information.

NO/INCOMPLETE DATA FOR 2002-03 PROVIDED BY THE FOLLOWING AIRLINES PRIOR TO FINALISATION OF THIS PUBLICATION

Lauda Air	No outbound freight data for September 2000 onwards. No inbound freight data for April 2001 onwards.
Merpati Nusantara Airlines	Jakarta/Christmas Island services commenced in August 2001. No data has been received for these services.
Olympic Airways	Data not received for operations to/from Sydney for September, October and November 2002. Data not received for operations to/from Melbourne for October 2002. All operations ceased in November 2002.
Polar Air Cargo	Data not received for March 2003 and onwards.
Vietnam Airlines	Data not received for operations to/from Sydney for August 2002 onwards.

AIRLINES COMMENCING/WITHDRAWING SERVICES DURING 2002-03

- The following airlines commenced operated services to/from Australia
 - Air Paradise International
 - Australian Airlines
 - Lan Chile
 - Royal Tongan Airlines (recommenced)
- The following airlines ceased operated services to/from Australia
 - EgyptAir
 - Gemini Air Cargo
 - Olympic Airways

YEAR ENDED JUNE 2003

- Fifty international scheduled airlines operated services to/from Australia during 2002-03 (includes dedicated freight airlines but excludes airlines operating only via code share arrangements).
- The year ended June 2003 saw a decrease of 2.3% in the number of revenue passengers carried and an increase of 0.1% in freight carried on international scheduled air services to and from Australia when compared with the previous year.
- Chart I shows total passenger traffic for the years ended June 1993 to 2003. Over this period, 2001-02 and 2002-03 were the only years that recorded a decrease in traffic compared to the previous year.
- Passenger traffic in 2001-02 was affected by the terrorist attacks on the USA in September 2001 and the collapse of Ansett International (also in September 2001). Passenger traffic in 2002-03 was affected by the SARS crisis (April, May and June 2003 in particular) and the war in Iraq.
- This can be seen in Chart II which shows total passenger traffic by month for 2000-01, 2001-02 and 2002-03.
- Chart III shows the passenger market shares for the top ten airlines for 2002-03. The top ten airlines accounted for 80.1% of the total market. Freedom Air and Emirates have made it into the top ten airline list in 2002-03 replacing United Airlines and Garuda Indonesia when compared to 2001-02.
- The Australian airline market share has dropped from 35.2% in 2001-02 to 34.3% in 2002-03. Qantas Airways' market share has dropped from 34.5% to 32.7% while its wholly owned subsidiary Australian Airlines which commenced operations in October 2002 had 1.6% of the total for the 2002-03 year. The rest of the drop is accounted for by the cessation of Ansett International which had 0.7% of the total in 2001-02.
- Table IV provides a breakdown of passenger traffic through Australian international airports for 2000-01, 2001-02 and 2002-03. Cairns and Gold Coast/Coolangatta were the only airports in 2002-03 to record an increase in traffic over 2001-02.
- The Boeing 747 (including Combi) was the most popular aircraft type operated to and from Australia, accounting for 28.8% of total aircraft movements in 2002-03. The next most popular type was the Boeing 767 with 26.5%, followed by the Boeing 737 with 18.3% and the Boeing 777 with 11.7%. All Airbus types accounted for a total of 7.9% and the McDonnell Douglas MD11 accounted for 2.4%.
- Freight carried on dedicated freight aircraft accounted for 27.5% of inbound freight to Australia, 13.5% of outbound freight from Australia and 20.3% of total freight. Note that some freighters operate as charters out of Australia or do not pick up freight in Australia – this accounts for the difference in inbound and outbound percentages.

**CHART I: TOTAL INTERNATIONAL PASSENGERS CARRIED
YEARS ENDED JUNE 1993 TO 2003**

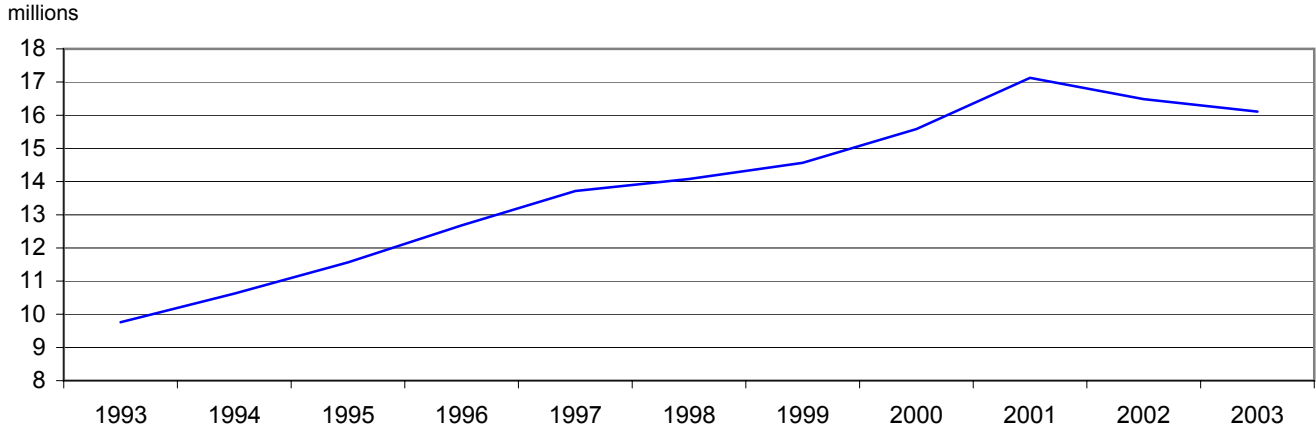
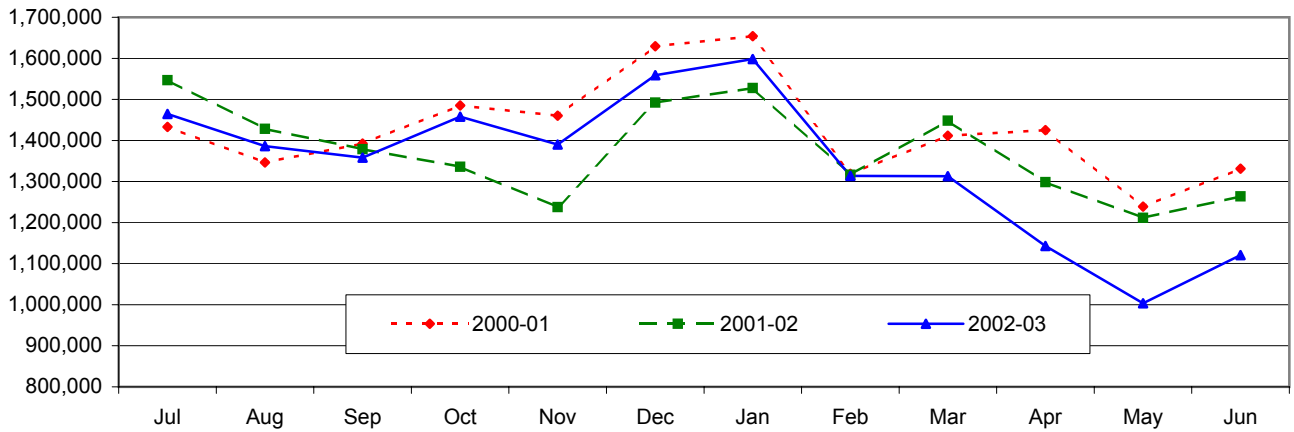
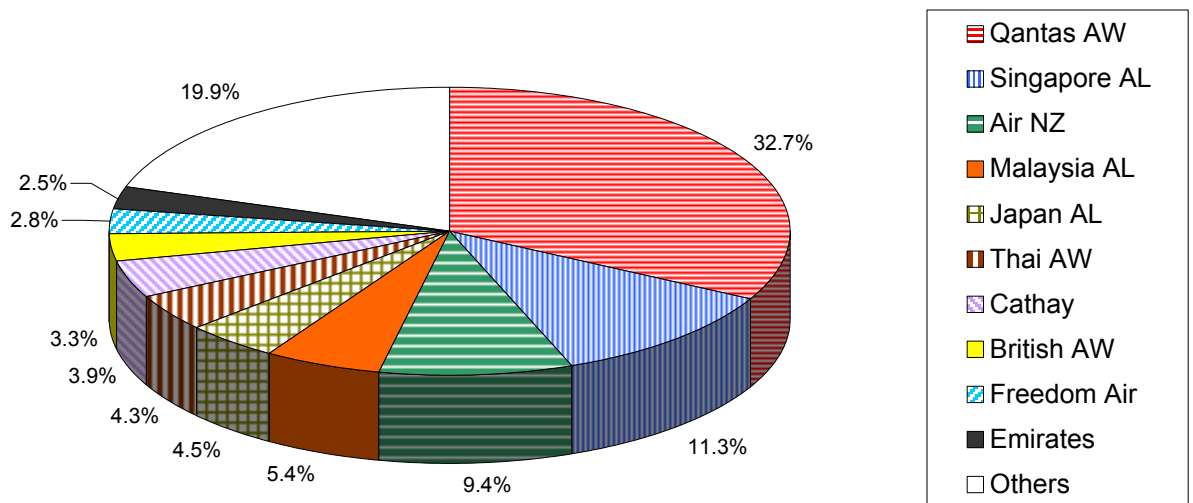


CHART II: TOTAL INTERNATIONAL PASSENGERS CARRIED BY MONTH



**CHART III: INTERNATIONAL PASSENGERS BY MAJOR AIRLINES
YEAR ENDED JUNE 2003**



**TABLE I: INTERNATIONAL PASSENGERS BY UPLIFT/DISCHARGE CITY PAIRS
YEARS ENDED JUNE 2001, 2002 AND 2003**

Foreign Port	Australian Port	Year ended June 2001	Year ended June 2002	Year ended June 2003	% of Total	% Change 2003 over 2002
Auckland	Sydney	1,009,428	969,920	1,027,961	6.4	6.0
Singapore	Sydney	927,436	962,406	890,986	5.5	-7.4
Singapore	Perth	652,244	687,016	649,112	4.0	-5.5
Los Angeles	Sydney	824,361	680,992	640,905	4.0	-5.9
Singapore	Melbourne	619,443	663,586	617,175	3.8	-7.0
Hong Kong	Sydney	670,055	563,141	530,635	3.3	-5.8
Singapore	Brisbane	369,577	424,351	488,949	3.0	15.2
Auckland	Melbourne	491,602	521,746	485,956	3.0	-6.9
Auckland	Brisbane	497,610	446,545	472,074	2.9	5.7
Bangkok	Sydney	436,802	448,458	448,341	2.8	0.0
Top 10 City Pairs		6,498,558	6,368,161	6,252,094	38.8	-1.8
Other City Pairs		10,627,946	10,118,182	9,856,323	61.2	-2.6
ALL CITY PAIRS		17,126,504	16,486,343	16,108,417	100.0	-2.3

**TABLE II: INTERNATIONAL FREIGHT (TONNES) BY UPLIFT/DISCHARGE CITY PAIRS
YEARS ENDED JUNE 2001, 2002 AND 2003**

Foreign Port	Australian Port	Year ended June 2001	Year ended June 2002	Year ended June 2003	% of Total	% Change 2003 over 2002
Singapore	Melbourne	47,767	48,720	52,085	8.2	6.9
Auckland	Sydney	50,134	48,350	48,938	7.7	1.2
Singapore	Sydney	47,268	51,061	45,664	7.2	-10.6
Auckland	Melbourne	29,035	31,953	32,014	5.0	0.2
Hong Kong	Sydney	33,425	29,229	30,492	4.8	4.3
Singapore	Perth	29,773	27,211	25,658	4.0	-5.7
Los Angeles	Sydney	29,621	27,665	25,276	4.0	-8.6
Hong Kong	Melbourne	25,729	23,082	23,503	3.7	1.8
Kuala Lumpur	Melbourne	14,534	15,454	21,494	3.4	39.1
Singapore	Brisbane	18,361	17,810	19,391	3.1	8.9
Top 10 City Pairs		325,646	320,535	324,516	51.1	1.2
Other City Pairs		340,039	313,807	310,394	48.9	-1.1
ALL CITY PAIRS		665,685	634,341	634,910	100.0	0.1

**TABLE III: INTERNATIONAL PASSENGERS BY UPLIFT/DISCHARGE COUNTRY
YEARS ENDED JUNE 2001, 2002 AND 2003**

Country	Year ended June 2001	Year ended June 2002	Year ended June 2003	% of Total	% Change 2003 over 2002
New Zealand	3,524,777	3,514,281	3,642,898	22.6	3.7
Singapore	2,826,360	2,920,335	2,816,610	17.5	-3.6
Japan	1,654,696	1,543,903	1,574,096	9.8	2.0
USA	1,608,160	1,352,391	1,333,770	8.3	-1.4
Hong Kong	1,217,830	1,119,781	1,070,964	6.6	-4.4
Malaysia	996,677	908,781	860,483	5.3	-5.3
Thailand	804,305	828,367	782,294	4.9	-5.6
UK	631,390	628,461	586,877	3.6	-6.6
Indonesia	857,385	736,832	536,975	3.3	-27.1
Korea	331,501	361,485	380,266	2.4	5.2
Top 10 Countries	14,453,081	13,914,617	13,585,233	84.3	-2.4
Other Countries	2,673,423	2,571,726	2,523,184	15.7	-1.9
ALL COUNTRIES	17,126,504	16,486,343	16,108,417	100.0	-2.3

**TABLE IV: INTERNATIONAL PASSENGER TRAFFIC
THROUGH AUSTRALIAN INTERNATIONAL AIRPORTS
YEARS ENDED JUNE 2001, 2002 AND 2003**

Airport	Year ended June 2001	Year ended June 2002	Year ended June 2003	% of Total	% Change 2003 over 2002
Sydney	8,537,832	7,968,165	7,752,988	48.1	-2.7
Melbourne	3,252,430	3,303,486	3,136,420	19.5	-5.1
Brisbane	2,538,692	2,476,511	2,442,918	15.2	-1.4
Perth	1,607,385	1,597,721	1,573,543	9.8	-1.5
Cairns	701,025	690,632	752,526	4.7	9.0
Adelaide	263,863	229,625	207,128	1.3	-9.8
Gold Coast/Coolangatta	33,799	66,833	136,030	0.8	103.5
Darwin	172,290	127,768	89,306	0.6	-30.1
Norfolk Island	14,933	16,697	15,482	0.1	-7.3
Newcastle (a)	..	8,485	2,076	0.0	-75.5
Broome (b)	4,255	273
Townsville (c)	..	147
ALL AIRPORTS	17,126,504	16,486,343	16,108,417	100.0	-2.3

(a) International operations commenced December 2001 and ceased September 2002.

(b) International operations recommenced April 2000 and ceased again in July 2001.

(c) International operations recommenced October 2001 and ceased again in March 2002.

TABLE V: SUMMARY STATISTICS

	Year ended June 2001	Year ended June 2002	Year ended June 2003	Growth compared to	
				2002	2001
Passengers Carried	17,126,504	16,486,343	16,108,417	-2.3	-5.9
Freight (tonnes)	665,685	634,341	634,910	0.1	-4.6
Mail (tonnes)	29,155	29,206	27,609	-5.5	-5.3
Available Seats	24,565,665	22,892,570	23,062,891	0.7	-6.1
Flights	93,828	87,557	89,374	2.1	-4.7
Aircraft Movements	112,902	105,390	106,083	0.7	-6.0
Seat Utilisation (%)	71.1	73.8	71.8		

Please refer to explanatory notes - paragraphs 3 & 13 in particular.

TABLE 1: SCHEDULED INTERNATIONAL AIR TRAFFIC TO AND FROM AUSTRALIA: Year ended June 2003

Scheduled Operator	Country to/from	Inbound			Outbound		
		Passengers	Freight (tonnes)	Mail (tonnes)	Passengers	Freight (tonnes)	Mail (tonnes)
Aerolineas Argentinas	Argentina	13,383	94.9	3.7	13,120	194.5	0.0
"	New Zealand	5,243	822.9	-	7,477	526.2	-
"	ALL SERVICES	18,626	917.8	3.7	20,597	720.7	0.0
Air Caledonie	New Caledonia	36,009	39.7	6.6	36,818	516.9	18.7
Air Canada	Canada	41,056	350.1	116.4	45,132	1,442.5	0.2
"	USA	32,208	1,670.6	185.5	28,832	2,019.9	5.4
"	ALL SERVICES	73,264	2,020.7	301.9	73,964	3,462.3	5.6
Air China	China	60,295	928.9	21.6	55,605	772.3	-
Air Mauritius	Mauritius	13,550	388.4	0.9	13,310	605.4	0.0
Air Nauru	Nauru	5,691	14.4	1.0	5,611	260.7	8.2
Air New Zealand	New Zealand	698,239	19,600.0	1,723.4	714,650	19,613.6	23.1
"	USA	46,515	798.9	41.8	47,004	1,652.8	-
"	ALL SERVICES	744,754	20,398.8	1,765.1	761,654	21,266.4	23.1
Air Niugini	Papua New Guinea	58,349	1,489.1	37.8	58,688	2,200.1	200.6
Air Pacific	Fiji	173,369	3,702.0	51.7	174,897	3,858.2	238.3
Air Paradise International (a)	Indonesia	12,580	17.9	-	13,784	49.4	-
Air Vanuatu	Vanuatu	28,448	101.0	30.5	28,033	306.0	49.4
Asian Express Airlines	New Zealand	..	3,523.3	-	..	4,208.3	-
Asiana Airlines	Korea	74,360	2,826.8	108.5	71,394	4,887.2	-
Australian Airlines (b)	Hong Kong	10,826	180.0	-	9,590	1,106.5	0.1
"	Indonesia	79	-	-	269	-	-
"	Japan	94,313	561.6	18.7	93,769	2,118.2	23.4
"	Malaysia	20	-	-	263	0.1	-
"	Singapore	12,397	223.1	2.1	14,371	349.3	8.7
"	Taiwan	8,359	373.6	-	8,191	108.7	22.5
"	ALL SERVICES	125,994	1,338.3	20.8	126,453	3,682.9	54.8
British Airways	Singapore	76,121	1,953.3	3.7	64,475	7,112.7	1.8
"	Thailand	66,803	1,560.0	0.4	70,290	1,211.0	-
"	UK	127,050	4,599.5	51.7	120,031	1,656.2	17.8
"	ALL SERVICES	269,974	8,112.8	55.8	254,796	9,980.0	19.6
Cargolux Airlines Intl	Luxembourg	..	4,086.4	-
"	Malaysia	..	617.8	-
"	New Zealand	5,291.1	-
"	ALL SERVICES	-	4,704.2	-	-	5,291.1	-
Cathay Pacific Airways	Hong Kong	331,665	22,220.0	163.0	303,057	30,461.0	26.3
China Airlines	Taiwan	30,768	954.2	98.4	30,084	1,329.0	-
China Eastern Airlines	China	34,396	1,688.8	9.3	30,230	381.1	5.2
China Southern Airlines	China	32,840	1,927.6	40.8	29,811	542.3	-
Continental Micronesia	Guam	10,856	0.3	0.5	11,112	39.3	-
EgyptAir (c)	Egypt	1,662	34.1	2.0	749	28.5	-
"	Singapore	203	35.6	1.4	189	23.1	-
"	ALL SERVICES	1,865	69.7	3.4	938	51.6	-
Emirates	Singapore	30,367	2,789.1	64.0	21,886	5,260.5	11.2
"	United Arab Emirates	171,922	4,581.9	61.6	173,450	8,065.0	13.6
"	ALL SERVICES	202,289	7,371.0	125.5	195,336	13,325.5	24.8
Eva Air	Taiwan	34,912	1,746.1	37.5	34,064	2,004.5	-
Federal Express Corporation	Philippines	8,880.8	-
"	USA	..	13,723.4	127.1
"	ALL SERVICES	-	13,723.4	127.1	-	8,880.8	-
Freedom Air International	New Zealand	228,025	-	-	228,954	-	-
Garuda Indonesia	Indonesia	147,492	4,153.9	3.9	145,241	4,227.9	0.0
"	New Zealand	13,679	1,467.1	-	14,163	811.5	-
"	ALL SERVICES	161,171	5,621.0	3.9	159,404	5,039.3	0.0
Gemini Air Cargo (d) (e)	Fiji	0.4	-
"	USA	..	3,413.9	92.0	..	567.4	17.6
"	ALL SERVICES	-	3,413.9	92.0	-	567.9	17.6
Japan Airlines	Japan	359,705	6,097.8	1,059.4	361,407	11,940.3	51.4
Korean Air	Korea	121,706	3,169.7	562.2	112,806	7,775.6	6.4
Lan Chile (f)	Chile	17,416	403.6	-	18,998	228.5	13.0
"	New Zealand	7,075	623.6	14.4	8,802	435.1	38.6
"	ALL SERVICES	24,491	1,027.3	14.4	27,800	663.6	51.6
Lauda Air (g)	Austria	80,124	-	-	83,378	-	-
"	Malaysia	12,013	-	-	11,367	-	-
"	ALL SERVICES	92,137	-	-	94,745	-	-
Lufthansa German Airlines	Germany	..	309.4	-	..	1,110.1	1.8
"	India	42.5	-
"	Malaysia	901.7	-

TABLE 1: SCHEDULED INTERNATIONAL AIR TRAFFIC TO AND FROM AUSTRALIA: Year ended June 2003

Scheduled Operator	Country to/from	Inbound			Outbound		
		Passengers	Freight (tonnes)	Mail (tonnes)	Passengers	Freight (tonnes)	Mail (tonnes)
Lufthansa German Airlines	New Zealand	..	3,387.9	5.9
"	Pakistan	28.4	-
"	United Arab Emirates	14.2	-
"	USA	..	4,790.9	-
"	ALL SERVICES	-	8,488.2	5.9	-	2,097.0	1.8
Malaysia Airlines	Malaysia	429,293	26,863.5	52.9	407,527	17,225.8	-
"	New Zealand	16,742	1,324.6	-	15,642	732.2	-
"	ALL SERVICES	446,035	28,188.0	52.9	423,169	17,958.0	-
Martinair Holland	Hong Kong	704.3	-
"	Japan	105.0	-
"	Netherlands	..	10,053.2	-	..	1,677.1	-
"	Taiwan	32.6	-
"	Thailand	118.0	-
"	United Arab Emirates	40.8	-
"	ALL SERVICES	-	10,053.2	-	-	2,677.9	-
Merpati Nusantara Airlines (h)	Indonesia	..	-	-	..	-	-
Olympic Airways (i) (j) (k)	Greece	5,752	44.3	15.2	5,208	18.0	-
"	Thailand	325	58.5	-	287	-	-
"	ALL SERVICES	6,077	102.8	15.2	5,495	18.0	-
Philippine Airlines	Philippines	33,248	1,040.0	27.6	29,648	912.4	0.6
Polar Air Cargo (l)	USA	..	5,224.2	-
Polynesian Airlines	New Zealand	4,789	0.1	-	5,049	9.3	7.3
"	Niue	49	0.1	0.1
"	Tahiti	1,905	3.3	27.4
"	Tonga	750	56.4	0.0	1,242	1.9	2.2
"	Western Samoa	4,473	61.8	2.8	4,752	43.6	8.1
"	ALL SERVICES	10,061	118.5	2.9	12,948	58.1	45.0
Qantas Airways	Fiji	951	20.4	-	898	9.2	0.7
"	France	19,325	545.1	103.5	17,945	64.1	49.5
"	Germany	54,000	2,594.8	534.2	54,813	643.5	764.7
"	Hong Kong	215,663	7,670.5	157.6	200,163	7,981.5	754.5
"	Indonesia	109,465	568.6	21.6	108,065	2,043.1	54.2
"	Italy	28,692	976.0	0.2	23,103	30.9	51.8
"	Japan	333,767	5,435.2	389.3	331,135	9,825.6	1,833.3
"	New Caledonia	21,270	9.2	2.2	18,780	182.2	23.6
"	New Zealand	747,289	21,661.6	107.8	777,896	22,271.9	2,284.2
"	Papua New Guinea	4,654	27.3	0.3	4,465	177.1	33.6
"	Philippines	35,793	980.2	24.0	34,349	863.2	39.6
"	Singapore	398,149	10,849.1	391.4	371,716	23,408.3	1,790.5
"	South Africa	64,883	1,077.5	36.0	58,159	338.1	112.0
"	Taiwan	7,266	323.7	-	6,703	134.7	23.6
"	Thailand	51,249	543.3	70.2	47,923	839.1	244.3
"	UK	161,899	4,553.4	2,447.4	177,897	553.7	2,283.1
"	USA	389,690	6,784.0	1,026.5	394,821	5,005.8	2,338.6
"	ALL SERVICES	2,644,005	64,620.0	5,312.1	2,628,831	74,372.1	12,681.9
Royal Brunei Airlines	Brunei	52,286	1,018.4	0.6	54,200	2,714.3	-
Royal Tongan Airlines (m)	New Zealand	651	0.3	-	571	-	-
"	Tonga	1,793	17.5	-	1,922	-	-
"	ALL SERVICES	2,444	17.8	-	2,493	-	-
Singapore Airlines	New Zealand	..	29.3	-	..	2,991.0	-
"	Singapore	934,554	47,945.5	1,210.1	892,182	50,741.2	75.4
"	ALL SERVICES	934,554	47,974.7	1,210.1	892,182	53,732.2	75.4
Solomon Airlines	Solomon Islands	8,266	105.0	-	8,608	86.8	-
South African Airways	South Africa	50,245	1,378.0	39.8	44,445	1,916.5	18.7
Thai Airways International	New Zealand	77,623	2,738.6	1.1	70,339	3,855.7	0.1
"	Thailand	276,749	11,781.7	1,014.8	268,668	11,288.5	4.1
"	ALL SERVICES	354,372	14,520.3	1,015.9	339,007	15,144.2	4.2
United Airlines	USA	196,600	2,049.0	1,414.9	198,100	7,745.7	135.1
United Parcel Service	Philippines	34.5	-
"	USA	..	5,007.2	-
"	ALL SERVICES	-	5,007.2	-	-	34.5	-
Vietnam Airlines (n)	Vietnam	27,520	646.1	4.1	26,137	266.0	-
TOTAL		8,127,802	310,106.2	13,845.2	7,980,615	324,803.7	13,764.2

TABLE 1: SCHEDULED INTERNATIONAL AIR TRAFFIC TO AND FROM AUSTRALIA: Year ended June 2003

Scheduled Operator	Country to/from	Inbound			Outbound		
		Passengers	Freight (tonnes)	Mail (tonnes)	Passengers	Freight (tonnes)	Mail (tonnes)

Please refer to explanatory notes - paragraphs 3, 6 and 13 in particular.

- (a) Service commenced February 2003.
- (b) Service commenced October 2002.
- (c) Service ceased July 2002.
- (d) Traffic carried on behalf of Qantas Airways.
- (e) Service commenced March 2002 and ceased March 2003.
- (f) Operated services commenced July 2002.
- (g) No outbound freight data for September 2000 onwards. No inbound freight data for April 2001 onwards.
- (h) Jakarta/Christmas Island services commenced in August 2001. No data has been received for these services.
- (i) Data not received for operations to/from Sydney for September, October and November 2002.
- (j) Data not received for operations to/from Melbourne for October 2002.
- (k) Service ceased November 2002.
- (l) Data not received for March 2003 and onwards.
- (m) Operated services recommenced December 2002.
- (n) Data not received for operations to/from Sydney for August 2002 onwards.

TABLE 2: SCHEDULED OPERATOR MARKET SHARES AND GROWTH: Year ended June

Scheduled Operators	Country to/from	Total Passengers				Total Freight (tonnes)				Total Mail (tonnes)			
		2002	2003	(%) of TOTAL	(%) Change	2002	2003	(%) of TOTAL	(%) Change	2002	2003	(%) of TOTAL	(%) Change
Aerolineas Argentinas (a)	Argentina	7,568	26,503	0.2	250.2	13.8	289.4	0.0	1990.4	3.9	3.7	0.0	-3.9
"	New Zealand	11,517	12,720	0.1	10.4	762.2	1,349.1	0.2	77.0	-	-	-	..
"	ALL SERVICES	19,085	39,223	0.2	105.5	776.1	1,638.5	0.3	111.1	3.9	3.7	0.0	-3.9
Air Caledonie	New Caledonia	73,608	72,827	0.5	-1.1	474.6	556.6	0.1	17.3	23.3	25.3	0.1	8.3
Air Canada	Canada	81,119	86,188	0.5	6.2	3,588.8	1,792.6	0.3	-50.1	124.6	116.6	0.4	-6.5
"	USA	62,385	61,040	0.4	-2.2	3,005.8	3,690.5	0.6	22.8	153.1	190.9	0.7	24.7
"	ALL SERVICES	143,504	147,228	0.9	2.6	6,594.6	5,483.0	0.9	-16.9	277.7	307.5	1.1	10.7
Air China	China	115,931	115,900	0.7	0.0	1,240.5	1,701.2	0.3	37.1	37.8	21.6	0.1	-42.9
Air Mauritius	Mauritius	27,146	26,860	0.2	-1.1	1,010.4	993.7	0.2	-1.6	0.7	0.9	0.0	28.1
Air Nauru	Nauru	11,473	11,302	0.1	-1.5	234.6	275.1	0.0	17.3	11.2	9.3	0.0	-16.9
Air New Zealand	New Zealand	1,499,008	1,412,889	8.8	-5.7	42,176.4	39,213.5	6.2	-7.0	1,417.0	1,746.5	6.3	23.3
"	USA	119,076	93,519	0.6	-21.5	3,690.3	2,451.7	0.4	-33.6	124.8	41.8	0.2	-66.5
"	ALL SERVICES	1,618,084	1,506,408	9.4	-6.9	45,866.7	41,665.3	6.6	-9.2	1,541.8	1,788.2	6.5	16.0
Air Niugini	Papua New Guinea	109,491	117,037	0.7	6.9	3,541.5	3,689.3	0.6	4.2	149.5	238.3	0.9	59.5
Air Pacific	Fiji	310,413	348,266	2.2	12.2	7,691.1	7,560.3	1.2	-1.7	177.0	290.0	1.1	63.9
Air Paradise International (b)	Indonesia	..	26,364	0.2	67.2	0.0	-	-	..
Air Vanuatu	Vanuatu	60,515	56,481	0.4	-6.7	489.9	407.0	0.1	-16.9	71.3	79.9	0.3	12.1
Ansett International (c)	Fiji	5,739	-100.0	158.0	-100.0	-
"	Hong Kong	40,689	-100.0	1,892.0	-100.0	35.0	-100.0
"	Indonesia	23,318	-100.0	128.0	-100.0	-
"	Japan	50,365	-100.0	1,394.0	-100.0	5.0	-100.0
"	ALL SERVICES	120,111	-	-	-100.0	3,572.0	-	-	-100.0	40.0	-	-	-100.0
Asian Express Airlines	New Zealand	7,807.3	7,731.7	1.2	-1.0	-	-	-	..
Asiana Airlines	Korea	133,195	145,754	0.9	9.4	5,095.0	7,714.1	1.2	51.4	136.5	108.5	0.4	-20.5
Australian Airlines (d)	Hong Kong	..	20,416	0.1	1,286.5	0.2	0.1	0.0	..
"	Indonesia	..	348	0.0	-	-	-	-	..
"	Japan	..	188,082	1.2	2,679.8	0.4	42.1	0.2	..
"	Malaysia	..	283	0.0	0.1	0.0	-	-	..
"	Singapore	..	26,768	0.2	572.5	0.1	10.9	0.0	..
"	Taiwan	..	16,550	0.1	482.3	0.1	22.5	0.1	..
"	ALL SERVICES	-	252,447	1.6	..	-	5,021.2	0.8	..	-	75.6	0.3	..
British Airways	Singapore	140,421	140,596	0.9	0.1	9,877.1	9,066.0	1.4	-8.2	15.9	5.4	0.0	-65.7
"	Thailand	133,002	137,093	0.9	3.1	1,827.5	2,771.1	0.4	51.6	29.2	0.4	0.0	-98.5
"	UK	273,701	247,081	1.5	-9.7	6,742.5	6,255.7	1.0	-7.2	758.7	69.5	0.3	-90.8
"	ALL SERVICES	547,124	524,770	3.3	-4.1	18,447.1	18,092.8	2.8	-1.9	803.8	75.4	0.3	-90.6
Cargolux Airlines Intl	Luxembourg	4,337.7	4,086.4	0.6	-5.8	-	-	-	..
"	Malaysia	660.9	617.8	0.1	-6.5	-	-	-	..
"	New Zealand	5,674.1	5,291.1	0.8	-6.7	-	-	-	..
"	Thailand	65.5	-100.0	-
"	ALL SERVICES	-	-	-	..	10,738.2	9,995.3	1.6	-6.9	-	-	-	..
Cathay Pacific Airways	Hong Kong	614,571	634,722	3.9	3.3	49,342.1	52,681.0	8.3	6.8	256.8	189.3	0.7	-26.3
China Airlines	New Zealand	12,975	-100.0	662.6	-100.0	34.3	-100.0
"	Taiwan	59,827	60,852	0.4	1.7	2,357.6	2,283.2	0.4	-3.2	114.5	98.4	0.4	-14.1
"	ALL SERVICES	72,802	60,852	0.4	-16.4	3,020.1	2,283.2	0.4	-24.4	148.8	98.4	0.4	-33.9

TABLE 2: SCHEDULED OPERATOR MARKET SHARES AND GROWTH: Year ended June

Scheduled Operators	Country to/from	Total Passengers				Total Freight (tonnes)				Total Mail (tonnes)			
		2002	2003	(%) of TOTAL	(%) Change	2002	2003	(%) of TOTAL	(%) Change	2002	2003	(%) of TOTAL	(%) Change
China Eastern Airlines	China	62,164	64,626	0.4	4.0	2,067.0	2,069.9	0.3	0.1	3.2	14.5	0.1	357.9
China Southern Airlines	China	71,603	62,651	0.4	-12.5	1,990.1	2,469.9	0.4	24.1	17.6	40.8	0.1	132.0
Continental Micronesia	Guam	21,395	21,968	0.1	2.7	39.4	39.6	0.0	0.5	-	0.5	0.0	..
EgyptAir (e)	Egypt	28,849	2,411	0.0	-91.6	700.4	62.6	0.0	-91.1	67.8	2.0	0.0	-97.1
"	Singapore	9,206	392	0.0	-95.7	937.3	58.7	0.0	-93.7	68.7	1.4	0.0	-97.9
"	ALL SERVICES	38,055	2,803	0.0	-92.6	1,637.8	121.3	0.0	-92.6	136.5	3.4	0.0	-97.5
Emirates	Singapore	52,209	52,253	0.3	0.1	6,771.1	8,049.5	1.3	18.9	64.1	75.2	0.3	17.3
"	United Arab Emirates	204,322	345,372	2.1	69.0	9,674.3	12,646.9	2.0	30.7	71.7	75.1	0.3	4.7
"	ALL SERVICES	256,531	397,625	2.5	55.0	16,445.4	20,696.4	3.3	25.8	135.8	150.3	0.5	10.7
Eva Air	Taiwan	66,865	68,976	0.4	3.2	3,043.3	3,750.6	0.6	23.2	38.7	37.5	0.1	-3.3
Evergreen Intl Airlines (f) (g)	American Samoa	0.3	-100.0	-
"	Fiji	12.3	-100.0	-
"	USA	3,266.8	-100.0	73.7	-100.0
"	ALL SERVICES	-	-	-	..	3,279.4	-	-	-100.0	73.7	-	-	-100.0
Federal Express Corporation	Philippines	9,961.1	8,880.8	1.4	-10.8	-	-	-	..
"	USA	12,669.4	13,723.4	2.2	8.3	144.2	127.1	0.5	-11.9
"	ALL SERVICES	-	-	-	..	22,630.6	22,604.2	3.6	-0.1	144.2	127.1	0.5	-11.9
Freedom Air International	New Zealand	294,394	456,979	2.8	55.2	-	-	-	..	-	-	-	..
Garuda Indonesia	Indonesia	392,447	292,733	1.8	-25.4	10,298.6	8,381.7	1.3	-18.6	2.4	3.9	0.0	62.0
"	New Zealand	32,171	27,842	0.2	-13.5	1,294.5	2,278.6	0.4	76.0	-	-	-	..
"	ALL SERVICES	424,618	320,575	2.0	-24.5	11,593.1	10,660.3	1.7	-8.0	2.4	3.9	0.0	62.0
Gemini Air Cargo (f) (h)	Fiji	0.4	0.0	-	-	..
"	USA	1,274.1	3,981.4	0.6	212.5	25.1	109.7	0.4	336.9
"	ALL SERVICES	-	-	-	..	1,274.1	3,981.8	0.6	212.5	25.1	109.7	0.4	336.9
Gulf Air (i)	Bahrain	41,075	-100.0	2,447.1	-100.0	25.2	-100.0
"	Singapore	16,430	-100.0	1,004.0	-100.0	21.8	-100.0
"	ALL SERVICES	57,505	-	-	-100.0	3,451.0	-	-	-100.0	46.9	-	-	-100.0
Japan Airlines	Japan	737,810	721,112	4.5	-2.3	20,015.6	18,038.1	2.8	-9.9	1,046.0	1,110.8	4.0	6.2
Korean Air	Korea	228,290	234,512	1.5	2.7	15,905.9	10,945.2	1.7	-31.2	488.6	568.6	2.1	16.4
Lan Chile (j)	Chile	..	36,414	0.2	632.1	0.1	13.0	0.0	..
"	New Zealand	..	15,877	0.1	1,058.8	0.2	53.0	0.2	..
"	ALL SERVICES	-	52,291	0.3	..	-	1,690.9	0.3	..	-	66.0	0.2	..
Lauda Air (k)	Austria	124,108	163,502	1.0	31.7	-	-	-	..	-	-	-	..
"	Malaysia	16,341	23,380	0.1	43.1	-	-	-	..	-	-	-	..
"	ALL SERVICES	140,449	186,882	1.2	33.1	-	-	-	..	-	-	-	..
Lufthansa German Airlines	Germany	1,380.0	1,419.5	0.2	2.9	7.6	1.8	0.0	-76.8
"	India	12.5	42.5	0.0	241.5	-	-	-	..
"	Malaysia	1,679.6	901.7	0.1	-46.3	-	-	-	..
"	New Zealand	2,778.1	3,387.9	0.5	21.9	1.0	5.9	0.0	486.8
"	Pakistan	26.5	28.4	0.0	7.5	-	-	-	..
"	United Arab Emirates	3.0	14.2	0.0	372.8	-	-	-	..
"	USA	4,655.5	4,790.9	0.8	2.9	1.5	-	-	-100.0
"	ALL SERVICES	-	-	-	..	10,535.1	10,585.2	1.7	0.5	10.1	7.6	0.0	-24.3
Malaysia Airlines	Malaysia	892,440	836,820	5.2	-6.2	34,122.4	44,089.3	6.9	29.2	44.8	52.9	0.2	17.9

TABLE 2: SCHEDULED OPERATOR MARKET SHARES AND GROWTH: Year ended June

Scheduled Operators	Country to/from	Total Passengers				Total Freight (tonnes)				Total Mail (tonnes)			
		2002	2003	(%) of TOTAL	(%) Change	2002	2003	(%) of TOTAL	(%) Change	2002	2003	(%) of TOTAL	(%) Change
Malaysia Airlines	New Zealand	..	32,384	0.2	2,056.8	0.3	-	-	..
"	ALL SERVICES	892,440	869,204	5.4	-2.6	34,122.4	46,146.0	7.3	35.2	44.8	52.9	0.2	17.9
Martinair Holland	Hong Kong	704.3	0.1	-	-	..
"	Japan	105.0	0.0	-	-	..
"	Netherlands	12,627.2	11,730.3	1.8	-7.1	-	-	-	..
"	Taiwan	32.6	0.0	-	-	..
"	Thailand	118.0	0.0	-	-	..
"	United Arab Emirates	40.8	0.0	-	-	..
"	ALL SERVICES	-	-	-	..	12,627.2	12,731.0	2.0	0.8	-	-	-	..
Merpati Nusantara Airlines (l) (m)	Indonesia	-	-	-	..	-	-	-	..
Olympic Airways (n) (o) (p)	Greece	49,609	10,960	0.1	-77.9	427.4	62.3	0.0	-85.4	266.7	15.2	0.1	-94.3
"	Thailand	5,834	612	0.0	-89.5	198.5	58.5	0.0	-70.5	-	-	-	..
"	ALL SERVICES	55,443	11,572	0.1	-79.1	625.9	120.8	0.0	-80.7	266.7	15.2	0.1	-94.3
Philippine Airlines	Philippines	59,328	62,896	0.4	6.0	1,925.6	1,952.5	0.3	1.4	4.0	28.2	0.1	612.2
Polar Air Cargo (q)	USA	6,424.8	5,224.2	0.8	-18.7	-	-	-	..
Polynesian Airlines	New Zealand	14,361	9,838	0.1	-31.5	53.0	9.4	0.0	-82.2	7.8	7.3	0.0	-5.9
"	Niue	..	49	0.0	0.1	0.0	0.1	0.0	..
"	Tahiti	3,802	1,905	0.0	-49.9	10.7	3.3	0.0	-69.2	55.8	27.4	0.1	-50.8
"	Tonga	3,643	1,992	0.0	-45.3	81.9	58.4	0.0	-28.7	4.5	2.2	0.0	-51.6
"	Western Samoa	8,068	9,225	0.1	14.3	75.6	105.4	0.0	39.3	6.1	10.9	0.0	79.5
"	ALL SERVICES	29,874	23,009	0.1	-23.0	221.2	176.6	0.0	-20.2	74.1	47.9	0.2	-35.4
Qantas Airways	Argentina	50,553	-100.0	468.2	-100.0	24.1	-100.0
"	Fiji	..	1,849	0.0	29.6	0.0	0.7	0.0	..
"	France	61,042	37,270	0.2	-38.9	797.6	609.3	0.1	-23.6	307.4	153.1	0.6	-50.2
"	Germany	129,989	108,813	0.7	-16.3	4,408.6	3,238.3	0.5	-26.5	1,711.8	1,298.8	4.7	-24.1
"	Hong Kong	464,521	415,826	2.6	-10.5	17,852.9	15,651.9	2.5	-12.3	973.2	912.1	3.3	-6.3
"	India	25,038	-100.0	256.9	-100.0	122.0	-100.0
"	Indonesia	321,067	217,530	1.4	-32.2	2,591.8	2,611.7	0.4	0.8	105.8	75.8	0.3	-28.4
"	Italy	84,186	51,795	0.3	-38.5	1,442.0	1,006.9	0.2	-30.2	121.0	52.0	0.2	-57.1
"	Japan	755,728	664,902	4.1	-12.0	15,966.6	15,260.9	2.4	-4.4	2,245.0	2,222.6	8.1	-1.0
"	New Caledonia	43,674	40,050	0.2	-8.3	182.9	191.5	0.0	4.7	38.1	25.8	0.1	-32.3
"	New Zealand	1,460,161	1,525,185	9.5	4.5	39,936.5	43,933.5	6.9	10.0	2,852.2	2,392.0	8.7	-16.1
"	Papua New Guinea	34,126	9,119	0.1	-73.3	877.2	204.4	0.0	-76.7	174.1	33.9	0.1	-80.6
"	Philippines	71,860	70,142	0.4	-2.4	1,711.8	1,843.4	0.3	7.7	73.3	63.6	0.2	-13.2
"	Singapore	752,960	769,865	4.8	2.2	38,801.2	34,257.3	5.4	-11.7	1,570.7	2,181.9	7.9	38.9
"	South Africa	121,169	123,042	0.8	1.5	1,572.1	1,415.6	0.2	-9.9	148.6	148.1	0.5	-0.4
"	Taiwan	45,679	13,969	0.1	-69.4	1,206.8	458.4	0.1	-62.0	59.0	23.6	0.1	-60.0
"	Thailand	164,246	99,172	0.6	-39.6	3,173.8	1,382.3	0.2	-56.4	288.1	314.5	1.1	9.2
"	UK	354,760	339,796	2.1	-4.2	5,214.6	5,107.1	0.8	-2.1	5,254.5	4,730.5	17.1	-10.0
"	USA	741,197	784,511	4.9	5.8	12,405.9	11,789.8	1.9	-5.0	3,457.3	3,365.2	12.2	-2.7
"	ALL SERVICES	5,681,956	5,272,836	32.7	-7.2	148,867.3	138,992.1	21.9	-6.6	19,526.0	17,993.9	65.2	-7.8
Royal Brunei Airlines	Brunei	105,477	106,486	0.7	1.0	3,249.7	3,732.7	0.6	14.9	0.6	0.6	0.0	8.8
Royal Tongan Airlines (r)	New Zealand	..	1,222	0.0	0.3	0.0	-	-	..
"	Tonga	..	3,715	0.0	17.5	0.0	-	-	..

TABLE 2: SCHEDULED OPERATOR MARKET SHARES AND GROWTH: Year ended June

Scheduled Operators	Country to/from	Total Passengers				Total Freight (tonnes)				Total Mail (tonnes)			
		2002	2003	(%) of TOTAL	(%) Change	2002	2003	(%) of TOTAL	(%) Change	2002	2003	(%) of TOTAL	(%) Change
Royal Tongan Airlines	ALL SERVICES	-	4,937	0.0	..	-	17.8	0.0	..	-	-	-	..
Singapore Airlines	New Zealand	2,263.3	3,020.3	0.5	33.4	-	-	-	..
"	Singapore	1,949,109	1,826,736	11.3	-6.3	95,495.2	98,686.7	15.5	3.3	1,338.6	1,285.5	4.7	-4.0
"	ALL SERVICES	1,949,109	1,826,736	11.3	-6.3	97,758.4	101,707.0	16.0	4.0	1,338.6	1,285.5	4.7	-4.0
Solomon Airlines	Solomon Islands	13,511	16,874	0.1	24.9	151.8	191.8	0.0	26.4	-	-	-	..
South African Airways	South Africa	89,635	94,690	0.6	5.6	2,877.9	3,294.5	0.5	14.5	28.5	58.6	0.2	105.4
SriLankan Airlines (s)	Sri Lanka	3,768	-100.0	137.5	-100.0	0.5	-100.0
Thai Airways International	New Zealand	125,073	147,962	0.9	18.3	6,353.6	6,594.3	1.0	3.8	1.6	1.2	0.0	-27.7
"	Thailand	525,285	545,417	3.4	3.8	19,858.2	23,070.2	3.6	16.2	751.4	1,018.9	3.7	35.6
"	ALL SERVICES	650,358	693,379	4.3	6.6	26,211.7	29,664.6	4.7	13.2	753.0	1,020.1	3.7	35.5
United Airlines	New Zealand	64,621	-100.0	2,661.1	-100.0	10.7	-100.0
"	USA	429,733	394,700	2.5	-8.2	10,750.3	9,794.7	1.5	-8.9	1,284.0	1,550.0	5.6	20.7
"	ALL SERVICES	494,354	394,700	2.5	-20.2	13,411.4	9,794.7	1.5	-27.0	1,294.8	1,550.0	5.6	19.7
United Parcel Service	Philippines	34.5	0.0	-	-	..
"	USA	4,480.4	5,007.2	0.8	11.8	-	-	-	..
"	ALL SERVICES	-	-	-	..	4,480.4	5,041.7	0.8	12.5	-	-	-	..
Vietnam Airlines (t)	Vietnam	84,358	53,657	0.3	-36.4	1,398.6	912.1	0.1	-34.8	25.5	4.1	0.0	-84.1
TOTAL		16,486,343	16,108,417	100.0	-2.3	634,341.4	634,909.9	100.0	0.1	29,205.9	27,609.4	100.0	-5.5

Please refer to explanatory notes - paragraphs 3, 6 and 13 in particular.

(a) Nil Operations for July 2001 to November 2001.

(b) Service commenced February 2003.

(c) Service ceased September 2001.

(d) Service commenced October 2002.

(e) Service ceased July 2002.

(f) Traffic carried on behalf of Qantas Airways.

(g) Service ceased December 2001.

(h) Service commenced March 2002 and ceased March 2003.

(i) Service ceased March 2002.

(j) Operated services commenced July 2002.

(k) No outbound freight data for September 2000 onwards. No inbound freight data for April 2001 onwards.

(l) Nil operations for May and July 2001.

(m) Jakarta/Christmas Island services commenced in August 2001. No data has been received for these services.

(n) Data not received for operations to/from Sydney for September, October and November 2002.

(o) Data not received for operations to/from Melbourne for October 2002.

(p) Service ceased November 2002.

(q) Data not received for March 2003 and onwards.

(r) Operated services recommenced December 2002.

(s) Service ceased July 2001.

(t) Data not received for operations to/from Sydney for August 2002 onwards.

TABLE 3: AIRLINE PASSENGER CAPACITY AND UTILISATION TO AND FROM AUSTRALIA BY OPERATOR: Year ended June 2003

Scheduled Operator	Service to/from	Inbound				Outbound			
		No. of Flights	Pax Carried	Seats Available	Seat Utilisation %	No. of Flights	Pax Carried	Seats Available	Seat Utilisation %
Aerolineas Argentinas	Argentina	104	18,626	25,636	72.7	105	20,597	25,883	79.6
Air Caledonie	New Caledonia	326	36,009	52,825	68.2	325	36,818	52,699	69.9
Air Canada	Canada	381	73,264	98,765	74.2	381	73,964	98,473	75.1
Air China	China	287	60,295	89,651	67.3	287	55,605	89,651	62.0
Air Mauritius	Mauritius	58	13,550	17,052	79.5	57	13,310	16,758	79.4
Air Nauru	Nauru	103	5,691	11,330	50.2	103	5,611	11,180	50.2
Air New Zealand	New Zealand	5,587	698,239	935,639	74.6	5,574	714,650	935,325	76.4
"	USA	169	46,515	66,102	70.4	168	47,004	65,675	71.6
"	ALL SERVICES	5,756	744,754	1,001,741	74.3	5,742	761,654	1,001,000	76.1
Air Niugini	Papua New Guinea	900	58,349	110,860	52.6	898	58,688	110,883	52.9
Air Pacific	Fiji	905	173,369	237,408	73.0	905	174,897	237,408	73.7
Air Paradise International (a)	Indonesia	118	12,580	23,961	52.5	118	13,784	23,961	57.5
Air Vanuatu	Vanuatu	418	28,448	52,232	54.5	416	28,033	51,849	54.1
Asian Express Airlines (b)	New Zealand	219	..	-	..	219	..	-	..
Asiana Airlines	Korea	364	74,360	112,840	65.9	364	71,394	112,840	63.3
Australian Airlines (c)	Hong Kong	76	10,888	20,553	53.0	76	9,766	20,553	47.5
"	Indonesia	1	79	271	29.2	1	273	273	100.0
"	Japan	541	94,721	146,509	64.7	542	95,308	146,826	64.9
"	Malaysia	1	20	270	7.4	1	263	270	97.4
"	Singapore	96	12,677	25,823	49.1	96	14,475	25,841	56.0
"	Taiwan	66	8,393	17,757	47.3	66	8,278	17,757	46.6
"	ALL SERVICES	781	126,778	211,183	60.0	782	128,363	211,520	60.7
British Airways	UK	1,001	269,974	364,051	74.2	1,001	254,796	364,101	70.0
Cargolux Airlines Intl (b)	Luxembourg	102	-	..	-	..
"	New Zealand	-	..	-	..	102
"	ALL SERVICES	102	-	-	..	102	-	-	..
Cathay Pacific Airways	Hong Kong	1,634	331,665	456,180	72.7	1,634	303,057	456,180	66.4
China Airlines	Taiwan	185	30,768	47,730	64.5	185	30,084	47,730	63.0
China Eastern Airlines	China	179	34,396	51,373	67.0	179	30,230	51,373	58.8
China Southern Airlines	China	168	32,840	48,216	68.1	168	29,811	48,216	61.8
Continental Micronesia	Guam	107	10,856	16,487	65.8	109	11,112	16,795	66.2
EgyptAir (d)	Egypt	9	1,865	2,340	79.7	9	938	2,340	40.1
Emirates	United Arab Emirates	822	202,289	282,006	71.7	822	195,336	282,006	69.3
Eva Air	Taiwan	205	34,912	51,616	67.6	205	34,064	51,616	66.0
Federal Express Corporation (b)	Philippines	-	..	-	..	259
"	USA	261	-	..	-	..
"	ALL SERVICES	261	-	-	..	259	-	-	..
Freedom Air International	New Zealand	2,327	228,025	317,860	71.7	2,325	228,954	329,822	69.4
Garuda Indonesia	Indonesia	990	147,492	239,690	61.5	990	145,241	239,690	60.6
"	New Zealand	156	13,679	45,630	30.0	156	14,163	45,630	31.0
"	ALL SERVICES	1,146	161,171	285,320	56.5	1,146	159,404	285,320	55.9
Gemini Air Cargo (b) (e) (f)	USA	63	..	-	..	28	..	-	..

TABLE 3: AIRLINE PASSENGER CAPACITY AND UTILISATION TO AND FROM AUSTRALIA BY OPERATOR: Year ended June 2003

Scheduled Operator	Service to/from	Inbound				Outbound			
		No. of Flights	Pax Carried	Seats Available	Seat Utilisation %	No. of Flights	Pax Carried	Seats Available	Seat Utilisation %
Japan Airlines	Japan	1,098	359,705	478,497	75.2	1,098	361,407	476,165	75.9
Korean Air	Korea	404	121,706	154,299	78.9	404	112,806	154,289	73.1
Lan Chile (g)	Chile	155	24,491	40,054	61.1	154	27,800	39,886	69.7
Lauda Air	Austria	354	92,137	121,776	75.7	354	94,745	121,776	77.8
Lufthansa German Airlines (b)	Germany	144	..	-	..	144	..	-	..
Malaysia Airlines	Malaysia	2,106	429,293	619,514	69.3	2,096	407,527	618,108	65.9
"	New Zealand	259	16,742	99,974	16.7	261	15,642	100,746	15.5
"	ALL SERVICES	2,365	446,035	719,488	62.0	2,357	423,169	718,854	58.9
Martinair Holland (b)	Netherlands	122	..	-	..	114	..	-	..
Merpati Nusantara Airlines (h)	Indonesia	-	..	-	..	-	..	-	..
Olympic Airways (i) (j) (k)	Greece	29	6,077	8,555	71.0	29	5,495	8,555	64.2
Philippine Airlines	Philippines	156	33,248	47,036	70.7	156	29,648	47,036	63.0
Polar Air Cargo (b) (l)	USA	85	-	..	-	..
Polynesian Airlines	Tahiti	-	..	-	..	48	5,523	7,392	74.7
"	Western Samoa	120	10,061	18,480	54.4	74	7,425	11,408	65.1
"	ALL SERVICES	120	10,061	18,480	54.4	122	12,948	18,800	68.9
Qantas Airways	Fiji	8	958	1,816	52.8	8	911	1,816	50.2
"	France	148	48,546	59,613	81.4	148	47,300	59,666	79.3
"	Germany	364	116,351	141,754	82.1	365	118,694	142,246	83.4
"	Hong Kong	1,279	271,717	346,163	78.5	1,292	242,766	344,274	70.5
"	Indonesia	572	94,029	123,059	76.4	568	89,477	122,130	73.3
"	Italy	166	36,783	45,737	80.4	167	51,330	64,382	79.7
"	Japan	1,655	347,355	476,893	72.8	1,654	342,706	476,532	71.9
"	New Caledonia	214	25,722	36,605	70.3	213	24,224	36,113	67.1
"	New Zealand	4,967	770,442	1,010,726	76.2	4,975	792,556	1,014,284	78.1
"	Papua New Guinea	35	5,031	7,944	63.3	35	5,477	7,937	69.0
"	Philippines	208	40,382	47,607	84.8	208	37,877	47,569	79.6
"	Singapore	986	228,184	298,098	76.5	982	208,543	279,511	74.6
"	South Africa	221	76,411	88,033	86.8	221	66,748	83,838	79.6
"	Taiwan	41	7,916	9,277	85.3	41	7,191	9,266	77.6
"	UK	984	322,921	385,621	83.7	983	330,474	385,178	85.8
"	USA	1,614	480,475	594,235	80.9	1,636	489,724	597,099	82.0
"	ALL SERVICES	13,462	2,873,223	3,673,181	78.2	13,496	2,855,998	3,671,841	77.8
Royal Brunei Airlines	Brunei	468	52,286	91,293	57.3	468	54,200	91,293	59.4
Royal Tongan Airlines (m)	New Zealand	2	249	332	75.0	3	283	498	56.8
"	Tonga	38	2,195	6,308	34.8	37	2,210	6,142	36.0
"	ALL SERVICES	40	2,444	6,640	36.8	40	2,493	6,640	37.5
Singapore Airlines	Singapore	3,709	934,554	1,199,765	77.9	3,708	892,182	1,199,765	74.4
Solomon Airlines	Solomon Islands	105	8,266	14,280	57.9	105	8,608	14,280	60.3
South African Airways	South Africa	209	50,245	64,142	78.3	209	44,445	64,072	69.4
Thai Airways International	New Zealand	520	77,623	191,880	40.5	521	70,339	192,165	36.6
"	Thailand	1,373	276,749	448,220	61.7	1,370	268,668	447,245	60.1

TABLE 3: AIRLINE PASSENGER CAPACITY AND UTILISATION TO AND FROM AUSTRALIA BY OPERATOR: Year ended June 2003

Scheduled Operator	Service to/from	Inbound				Outbound			
		No. of Flights	Pax Carried	Seats Available	Seat Utilisation %	No. of Flights	Pax Carried	Seats Available	Seat Utilisation %
Thai Airways International	ALL SERVICES	1,893	354,372	640,100	55.4	1,891	339,007	639,410	53.0
United Airlines	USA	715	196,600	248,105	79.2	714	198,100	247,758	80.0
United Parcel Service (b)	Philippines	-	..	-	..	8
"	USA	104	-	..	-	..
"	ALL SERVICES	104	-	-	..	8	-	-	..
Vietnam Airlines (n)	Vietnam	132	27,520	34,386	80.0	131	26,137	34,127	76.6
TOTAL		44,798	8,357,804	11,528,740	72.5	44,576	8,209,692	11,534,151	71.2

Please refer to explanatory notes - paragraphs 4, 5, 7 and 14 in particular.

Traffic shown in this table for airlines which fly through Australia may differ from traffic in Tables 1 and 2 because of the inclusion in this table of total traffic into and ex Australia (for seat factor purposes) whereas Tables 1 and 2 include uplift/discharge traffic only.

(a) Service commenced February 2003.

(b) Freight flights only.

(c) Service commenced October 2002.

(d) Service ceased July 2002.

(e) Traffic carried on behalf of Qantas Airways.

(f) Service commenced March 2002 and ceased March 2003.

(g) Operated services commenced July 2002.

(h) Jakarta/Christmas Island services commenced in August 2001. No data has been received for these services.

(i) Data not received for operations to/from Sydney for September, October and November 2002.

(j) Data not received for operations to/from Melbourne for October 2002.

(k) Service ceased November 2002.

(l) Data not received for March 2003 and onwards.

(m) Operated services recommenced December 2002.

(n) Data not received for operations to/from Sydney for August 2002 onwards.

TABLE 4: SCHEDULED INTERNATIONAL AIRPORT TRAFFIC AND AIRCRAFT MOVEMENTS: Year ended June

		Inbound		Change	Outbound		Change	Total		Change	TOTAL
		2002	2003		2002	2003		2002	2003		
Adelaide	Passengers	118,007	108,579	-8.0	111,618	98,549	-11.7	229,625	207,128	-9.8	1.3
"	Freight (Tonnes)	3,608	5,188	43.8	6,996	7,000	0.1	10,604	12,188	14.9	1.9
"	Aircraft Movements	824	842	2.2	925	838	-9.4	1,749	1,680	-3.9	1.6
Brisbane	Passengers	1,290,537	1,258,863	-2.5	1,185,974	1,184,055	-0.2	2,476,511	2,442,918	-1.4	15.2
"	Freight (Tonnes)	25,856	28,933	11.9	47,805	43,563	-8.9	73,661	72,496	-1.6	11.4
"	Aircraft Movements	8,551	8,576	0.3	8,505	8,569	0.8	17,056	17,145	0.5	16.2
Broome	Passengers	158	..	-100.0	115	..	-100.0	273	-	-100.0	..
"	Freight (Tonnes)	-	-	-	-
"	Aircraft Movements	3	..	-100.0	3	..	-100.0	6	-	-100.0	..
Cairns	Passengers	349,624	375,953	7.5	341,008	376,573	10.4	690,632	752,526	9.0	4.7
"	Freight (Tonnes)	2,162	2,262	4.7	7,267	8,849	21.8	9,429	11,111	17.8	1.8
"	Aircraft Movements	3,081	3,755	21.9	3,079	3,757	22.0	6,160	7,512	21.9	7.1
Darwin	Passengers	66,175	44,404	-32.9	61,593	44,902	-27.1	127,768	89,306	-30.1	0.6
"	Freight (Tonnes)	421	278	-33.9	916	454	-50.5	1,337	732	-45.3	0.1
"	Aircraft Movements	993	656	-33.9	992	655	-34.0	1,985	1,311	-34.0	1.2
Gold Coast/Coolangatta	Passengers	34,022	68,256	100.6	32,811	67,774	106.6	66,833	136,030	103.5	0.8
"	Freight (Tonnes)	-	339	..	-	101	..	-	441	..	0.1
"	Aircraft Movements	339	856	152.5	338	854	152.7	677	1,710	152.6	1.6
Melbourne	Passengers	1,664,798	1,606,937	-3.5	1,638,688	1,529,483	-6.7	3,303,486	3,136,420	-5.1	19.5
"	Freight (Tonnes)	82,094	92,886	13.1	97,395	95,917	-1.5	179,489	188,803	5.2	29.7
"	Aircraft Movements	11,063	10,527	-4.8	11,260	10,466	-7.1	22,323	20,993	-6.0	19.8
Newcastle	Passengers	4,303	1,066	-75.2	4,182	1,010	-75.8	8,485	2,076	-75.5	0.0
"	Freight (Tonnes)	-	-	..	-	-	..	-	-
"	Aircraft Movements	55	18	-67.3	55	18	-67.3	110	36	-67.3	0.0
Norfolk Island	Passengers	8,314	7,832	-5.8	8,383	7,650	-8.7	16,697	15,482	-7.3	0.1
"	Freight (Tonnes)	111	104	-6.1	24	14	-40.3	135	118	-12.2	0.0
"	Aircraft Movements	105	103	-1.9	104	99	-4.8	209	202	-3.3	0.2
Perth	Passengers	818,924	811,860	-0.9	778,797	761,683	-2.2	1,597,721	1,573,543	-1.5	9.8
"	Freight (Tonnes)	14,091	16,401	16.4	36,867	34,385	-6.7	50,957	50,786	-0.3	8.0
"	Aircraft Movements	4,278	4,196	-1.9	4,251	4,227	-0.6	8,529	8,423	-1.2	7.9
Sydney	Passengers	3,918,431	3,844,052	-1.9	4,049,734	3,908,936	-3.5	7,968,165	7,752,988	-2.7	48.1
"	Freight (Tonnes)	160,447	163,715	2.0	148,281	134,521	-9.3	308,729	298,236	-3.4	47.0
"	Aircraft Movements	23,493	23,623	0.6	23,016	23,448	1.9	46,509	47,071	1.2	44.4

TABLE 4: SCHEDULED INTERNATIONAL AIRPORT TRAFFIC AND AIRCRAFT MOVEMENTS: Year ended June

		Inbound			Outbound			Total			Change	TOTAL
		2002	2003	(%) Change	2002	2003	(%) Change	2002	2003	(%) Change		
Townsville	Passengers	68	..	-100.0	79	..	-100.0	147	-	-100.0	..	
"	Freight (Tonnes)	-	0	..	-100.0	0	-	-100.0	..	
"	Aircraft Movements	39	..	-100.0	38	..	-100.0	77	-	-100.0	..	
TOTAL	Passengers	8,273,361	8,127,802	-1.8	8,212,982	7,980,615	-2.8	16,486,343	16,108,417	-2.3	100.0	
	Freight (Tonnes)	288,789	310,106	7.4	345,552	324,804	-6.0	634,341	634,910	0.1	100.0	
	Aircraft Movements	52,824	53,152	0.6	52,566	52,931	0.7	105,390	106,083	0.7	100.0	

TABLE 5: SCHEDULED INTERNATIONAL TRAFFIC BY CITY PAIRS: Year ended June

Foreign Port	Australian Port	Passengers						Freight (tonnes)					
		2002			2003			2002			2003		
		Inbound	Outbound	Total	Inbound	Outbound	Total	Inbound	Outbound	Total	Inbound	Outbound	Total
Amsterdam	Adelaide	0	0	0	0	0	0	0.0	0.0	0.0	172.0	0.0	172.0
Auckland	"	46	355	401	45	56	101	76.2	106.9	183.1	130.6	136.5	267.2
Bangkok	"	22	11	33	0	12	12	13.3	11.2	24.4	6.1	4.6	10.7
Bombay	"	78	62	140	0	0	0	3.4	0.0	3.4	0.0	0.0	0.0
Buenos Aires	"	0	45	45	0	0	0	2.9	1.6	4.6	0.0	0.0	0.0
Chicago	"	0	0	0	0	0	0	0.0	0.0	0.0	0.0	0.0	0.0
Christchurch	"	134	45	179	469	7	476	24.1	23.0	47.2	56.1	31.4	87.5
Denpasar	"	13,354	13,179	26,533	6,410	6,330	12,740	199.0	184.9	383.9	133.7	277.0	410.7
Frankfurt	"	1,752	1,356	3,108	474	481	955	6.2	2.1	8.4	33.6	0.6	34.2
Hong Kong	"	13,621	10,484	24,105	15,656	11,007	26,663	418.2	595.7	1,013.9	498.0	721.7	1,219.7
Honolulu	"	91	147	238	0	0	0	0.0	5.3	5.3	0.0	1.8	1.8
Jakarta	"	124	126	250	0	3	3	1.2	0.1	1.2	0.6	21.9	22.5
Johannesburg	"	0	0	0	0	0	0	8.3	19.6	27.9	23.8	2.4	26.2
Kuala Lumpur	"	30,737	29,993	60,730	34,131	31,444	65,575	804.2	1,140.0	1,944.3	1,594.9	1,050.8	2,645.6
London	"	2,888	2,542	5,430	703	614	1,317	37.5	29.5	67.0	22.0	7.0	29.0
Los Angeles	"	190	296	486	948	173	1,121	5.2	132.4	137.6	8.4	101.1	109.5
Manila	"	64	86	150	0	45	45	6.2	3.1	9.3	19.7	0.6	20.3
Nagoya	"	17	4	21	0	0	0	29.1	10.8	39.8	1.2	20.9	22.0
New York	"	0	11	11	2	0	2	1.1	3.3	4.5	1.5	1.0	2.5
Noumea	"	0	0	0	0	0	0	0.0	0.2	0.2	0.0	0.4	0.5
Osaka	"	1	0	1	0	0	0	3.8	7.0	10.8	13.8	25.9	39.7
Paris	"	15	293	308	10	68	78	5.2	2.7	7.9	6.8	0.3	7.1
Port Moresby	"	0	0	0	0	0	0	0.0	1.0	1.0	0.0	0.5	0.5
Queenstown	"	1	0	1	5	2	7	0.0	0.0	0.0	0.0	0.0	0.0
Rome	"	223	255	478	211	407	618	3.3	0.1	3.4	13.6	0.0	13.6
Singapore	"	54,466	52,302	106,768	49,247	47,891	97,138	1,902.8	4,641.1	6,543.9	2,195.1	4,517.0	6,712.1
Taipei	"	0	6	6	0	0	0	0.0	1.1	1.1	5.7	0.8	6.5
Tokyo	"	153	9	162	263	1	264	55.6	71.4	127.0	249.8	74.8	324.6
Wellington	"	30	11	41	5	8	13	1.4	1.9	3.2	0.4	1.2	1.7
Total	Adelaide	118,007	111,618	229,625	108,579	98,549	207,128	3,608.3	6,995.9	10,604.2	5,187.6	7,000.2	12,187.7
Auckland	Brisbane	222,115	224,430	446,545	235,365	236,709	472,074	6,560.7	7,708.9	14,269.7	7,402.6	8,064.4	15,467.1
Bandar Seri Begawan	"	24,616	26,448	51,064	25,851	27,271	53,122	404.5	1,666.4	2,070.9	791.6	1,650.4	2,442.0
Bangkok	"	27,445	28,580	56,025	26,367	27,602	53,969	563.8	1,323.9	1,887.7	845.1	1,254.9	2,100.0
Bombay	"	1,676	648	2,324	0	0	0	25.4	2.2	27.6	0.0	0.0	0.0
Buenos Aires	"	2,269	52	2,321	0	0	0	2.2	4.6	6.8	0.0	0.0	0.0
Chicago	"	0	0	0	0	0	0	44.3	0.0	44.3	1.4	0.0	1.4
Christchurch	"	83,023	84,232	167,255	73,141	72,314	145,455	928.5	1,393.4	2,322.0	716.4	1,033.2	1,749.6
Denpasar	"	24,831	25,139	49,970	21,484	20,271	41,755	542.7	648.0	1,190.7	542.2	375.0	917.3
Dunedin	"	15,395	16,042	31,437	15,926	16,149	32,075	0.0	0.0	0.0	0.0	0.0	0.0
Frankfurt	"	5,066	5,987	11,053	4,714	4,625	9,339	136.5	13.0	149.4	152.0	8.5	160.5
Fukuoka	"	460	268	728	0	0	0	0.0	0.0	0.0	0.0	0.0	0.0
Hamilton	"	25,193	25,335	50,528	21,917	23,366	45,283	0.0	0.0	0.0	0.0	0.0	0.0
Hong Kong	"	63,606	62,742	126,348	54,892	51,427	106,319	2,354.7	4,265.8	6,620.5	2,416.2	3,412.4	5,828.6
Honiara	"	6,900	6,611	13,511	8,266	8,608	16,874	102.2	49.5	151.8	105.0	86.8	191.8
Honolulu	"	813	150	963	722	12	734	0.1	33.6	33.7	4.5	31.5	36.0

TABLE 5: SCHEDULED INTERNATIONAL TRAFFIC BY CITY PAIRS: Year ended June

Foreign Port	Australian Port	Passengers						Freight (tonnes)					
		2002			2003			2002			2003		
		Inbound	Outbound	Total	Inbound	Outbound	Total	Inbound	Outbound	Total	Inbound	Outbound	Total
Jakarta	Brisbane	2,015	493	2,508	1,173	158	1,331	0.2	20.1	20.3	0.6	7.2	7.8
Johannesburg	"	0	177	177	0	113	113	5.1	6.9	12.0	10.4	3.8	14.2
Kuala Lumpur	"	60,957	58,887	119,844	44,346	43,296	87,642	2,086.5	2,219.1	4,305.6	1,358.3	1,252.4	2,610.7
London	"	13,124	13,714	26,838	8,460	7,663	16,123	185.9	33.8	219.7	99.1	22.6	121.7
Los Angeles	"	31,330	27,417	58,747	36,558	33,686	70,244	890.1	520.0	1,410.1	804.9	529.5	1,334.4
Manila	"	5,734	5,427	11,161	6,531	5,516	12,047	5.7	86.9	92.7	6.7	53.6	60.3
Nadi	"	25,566	25,073	50,639	29,647	28,826	58,473	167.1	232.8	399.9	127.2	252.2	379.4
Nagoya	"	6,813	1,631	8,444	3,706	326	4,032	14.2	306.4	320.6	1.5	380.9	382.3
Nauru	"	4,337	4,003	8,340	4,423	4,238	8,661	9.4	165.3	174.7	13.0	205.4	218.4
New York	"	147	22	169	190	48	238	83.1	11.0	94.2	18.0	1.7	19.7
Noumea	"	16,202	17,311	33,513	16,591	18,007	34,598	13.5	158.7	172.2	23.5	169.1	192.6
Osaka	"	118,926	28,600	147,526	92,297	26,478	118,775	885.3	2,195.0	3,080.4	616.8	1,445.0	2,061.7
Palmerston	"	15,246	15,338	30,584	17,682	17,677	35,359	0.0	0.0	0.0	0.0	0.0	0.0
Paris	"	2,348	2,441	4,789	1,142	1,404	2,546	1.7	2.8	4.5	12.7	2.2	14.9
Port Moresby	"	33,416	36,299	69,715	26,677	29,728	56,405	1,136.8	1,839.4	2,976.2	1,077.5	1,838.3	2,915.8
Port Vila	"	10,155	10,066	20,221	10,033	9,815	19,848	40.0	145.8	185.7	41.5	127.9	169.3
Queenstown	"	2,261	2,269	4,530	2,413	2,423	4,836	0.0	0.0	0.0	0.0	0.0	0.0
Rome	"	1,152	1,338	2,490	1,887	6,809	8,696	64.0	1.4	65.4	74.4	13.8	88.2
Seoul	"	26,415	23,302	49,717	28,574	23,972	52,546	467.3	1,526.8	1,994.1	429.5	1,639.3	2,068.8
Singapore	"	213,965	210,386	424,351	246,458	242,491	488,949	4,622.3	13,187.8	17,810.0	7,069.5	12,321.9	19,391.4
Taipei	"	33,601	32,637	66,238	25,354	25,659	51,013	1,335.4	1,694.3	3,029.7	1,365.4	1,320.7	2,686.1
Tokyo	"	117,421	118,236	235,657	119,191	120,419	239,610	2,136.8	6,303.6	8,440.5	2,791.4	6,038.9	8,830.3
Toledo	"	0	0	0	0	0	0	6.9	0.0	6.9	0.5	0.0	0.5
Wellington	"	45,998	44,243	90,241	46,885	46,949	93,834	33.1	37.8	70.9	13.2	19.1	32.4
Total	Brisbane	1,290,537	1,185,974	2,476,511	1,258,863	1,184,055	2,442,918	25,856.1	47,805.2	73,661.3	28,932.6	43,562.9	72,495.5
Denpasar	Broome	158	115	273	0	0	0	0.0	0.0	0.0	0.0	0.0	0.0
Total	Broome	158	115	273	0	0	0	0.0	0.0	0.0	0.0	0.0	0.0
Auckland	Cairns	13,265	18,402	31,667	21,255	25,163	46,418	118.2	54.2	172.3	277.9	157.4	435.2
Bangkok	"	394	121	515	214	112	326	0.6	4.8	5.4	2.5	1.5	4.0
Bombay	"	230	104	334	0	0	0	3.4	0.2	3.6	0.0	0.0	0.0
Buenos Aires	"	32	180	212	0	0	0	0.0	0.2	0.2	0.0	0.0	0.0
Christchurch	"	1,274	1,621	2,895	564	1,715	2,279	0.8	3.7	4.5	2.9	1.4	4.3
Denpasar	"	601	662	1,263	63	112	175	16.6	2.2	18.8	2.2	1.2	3.4
Frankfurt	"	3,513	8,690	12,203	2,709	5,568	8,277	0.7	3.9	4.6	7.5	2.4	9.8
Fukuoka	"	0	13	13	10,072	11,237	21,309	0.0	0.0	0.0	14.8	83.4	98.2
Guam	"	10,675	10,720	21,395	10,856	11,112	21,968	0.3	39.1	39.4	0.3	39.3	39.6
Hong Kong	"	36,820	25,355	62,175	38,921	30,911	69,832	253.3	3,137.0	3,390.2	412.5	4,112.5	4,524.9
Honolulu	"	131	759	890	155	190	345	0.0	1.9	1.9	0.0	0.3	0.3
Jakarta	"	195	192	387	88	86	174	0.3	4.5	4.7	0.0	2.3	2.3
Johannesburg	"	0	219	219	34	88	122	0.5	0.4	0.9	0.5	0.3	0.7
Kuala Lumpur	"	7,321	9,420	16,741	0	0	0	24.3	133.6	158.0	0.0	0.0	0.0
London	"	6,805	7,769	14,574	2,870	3,728	6,598	0.5	9.9	10.4	0.4	4.5	4.9
Los Angeles	"	4,431	5,425	9,856	2,764	4,729	7,493	13.8	143.1	156.9	2.1	107.2	109.3
Manila	"	82	76	158	39	35	74	0.0	8.1	8.1	0.1	3.4	3.5
Nagoya	"	63,513	56,083	119,596	60,647	65,272	125,919	147.5	475.4	622.8	149.8	1,177.2	1,327.0

TABLE 5: SCHEDULED INTERNATIONAL TRAFFIC BY CITY PAIRS: Year ended June

Foreign Port	Australian Port	Passengers						Freight (tonnes)					
		2002			2003			2002			2003		
		Inbound	Outbound	Total	Inbound	Outbound	Total	Inbound	Outbound	Total	Inbound	Outbound	Total
New York	Cairns	8	113	121	13	16	29	0.1	5.3	5.4	0.0	0.6	0.6
Noumea	"	2	4	6	0	8	8	0.0	1.4	1.4	0.0	0.1	0.1
Osaka	"	32,970	25,770	58,740	49,649	43,403	93,052	368.3	381.6	749.9	469.2	972.2	1,441.5
Paris	"	772	2,388	3,160	565	981	1,546	0.4	0.3	0.7	0.0	0.2	0.2
Port Moresby	"	26,848	24,321	51,169	24,442	21,772	46,214	245.9	375.2	621.1	80.6	225.9	306.5
Queenstown	"	6	19	25	33	18	51	0.0	0.0	0.0	0.0	0.0	0.0
Rome	"	200	437	637	345	1,323	1,668	0.3	0.2	0.6	0.5	2.7	3.2
Sapporo	"	0	0	0	0	96	96	0.0	0.0	0.0	0.0	0.0	0.0
Singapore	"	20,648	21,905	42,553	20,704	20,873	41,577	194.1	568.3	762.4	261.8	463.7	725.5
Taipei	"	60	45	105	7,799	7,686	15,485	0.1	0.3	0.4	373.6	108.7	482.3
Tokyo	"	118,296	119,484	237,780	120,523	119,930	240,453	771.7	1,911.9	2,683.6	203.1	1,379.2	1,582.4
Wellington	"	532	711	1,243	629	409	1,038	0.0	0.6	0.6	0.0	1.4	1.4
Total	Cairns	349,624	341,008	690,632	375,953	376,573	752,526	2,161.7	7,267.0	9,428.7	2,262.4	8,849.0	11,111.4
Auckland	Darwin	52	114	166	18	162	180	0.7	3.7	4.4	1.6	0.8	2.3
Bandar Seri Begawan	"	6,255	6,427	12,682	6,414	6,480	12,894	42.0	38.8	80.8	43.8	52.3	96.1
Bangkok	"	6	9	15	5	6	11	2.9	0.2	3.1	0.1	0.3	0.4
Bombay	"	89	57	146	0	0	0	17.2	0.0	17.2	0.0	0.0	0.0
Buenos Aires	"	0	0	0	0	0	0	0.0	0.4	0.4	0.0	0.0	0.0
Christchurch	"	15	84	99	6	67	73	0.0	0.9	0.9	0.0	0.0	0.0
Denpasar	"	21,351	23,519	44,870	15,868	17,001	32,869	21.9	4.5	26.4	6.6	3.4	10.0
Frankfurt	"	5,589	3,880	9,469	3,309	2,811	6,120	8.3	2.4	10.7	0.4	1.1	1.5
Hong Kong	"	563	65	628	183	18	201	4.0	107.2	111.2	25.2	95.8	121.0
Honolulu	"	4	0	4	0	0	0	0.0	2.4	2.4	0.0	0.0	0.0
Jakarta	"	135	73	208	3	0	3	1.1	1.4	2.5	0.0	0.5	0.5
Johannesburg	"	0	0	0	0	0	0	1.9	1.4	3.3	0.0	0.3	0.3
Kuala Lumpur	"	7,792	5,960	13,752	0	0	0	96.5	113.0	209.5	0.0	0.0	0.0
Kupang	"	0	0	0	0	0	0	0.0	0.0	0.0	0.0	0.0	0.0
London	"	4,777	4,508	9,285	2,184	2,405	4,589	8.3	29.4	37.7	4.6	14.6	19.2
Los Angeles	"	40	135	175	79	60	139	2.0	8.5	10.5	0.2	1.0	1.2
Manila	"	0	2	2	0	0	0	0.2	0.2	0.4	0.0	0.0	0.0
Nagoya	"	88	47	135	0	0	0	0.1	0.0	0.1	0.0	0.0	0.0
New York	"	0	0	0	0	0	0	9.6	0.7	10.3	0.0	0.2	0.2
Osaka	"	10	9	19	0	0	0	0.2	0.0	0.2	0.0	0.0	0.0
Paris	"	902	966	1,868	4	420	424	1.0	12.7	13.6	0.4	3.4	3.8
Port Moresby	"	0	0	0	0	0	0	0.0	0.0	0.0	0.0	0.1	0.1
Rome	"	187	115	302	437	343	780	4.0	0.3	4.3	0.3	0.9	1.2
Singapore	"	18,066	15,451	33,517	15,885	15,098	30,983	196.1	580.8	777.0	176.6	277.4	454.0
Tokyo	"	244	159	403	7	9	16	3.0	7.1	10.1	18.2	1.8	20.0
Wellington	"	10	13	23	2	22	24	0.0	0.3	0.3	0.0	0.0	0.0
Total	Darwin	66,175	61,593	127,768	44,404	44,902	89,306	420.8	916.4	1,337.2	278.0	453.8	731.8
Auckland	Gold Coast/Coolangatta	16,617	15,716	32,333	33,173	34,154	67,327	0.0	0.0	0.0	0.0	0.0	0.0
Christchurch	"	0	0	0	8,672	8,021	16,693	0.0	0.0	0.0	0.0	0.0	0.0
Dunedin	"	1,359	1,146	2,505	5,268	5,095	10,363	0.0	0.0	0.0	0.0	0.0	0.0
Fukuoka	"	0	0	0	834	599	1,433	0.0	0.0	0.0	0.0	0.0	0.0
Hamilton	"	9,538	9,546	19,084	9,352	9,038	18,390	0.0	0.0	0.0	0.0	0.0	0.0

TABLE 5: SCHEDULED INTERNATIONAL TRAFFIC BY CITY PAIRS: Year ended June

Foreign Port	Australian Port	Passengers						Freight (tonnes)					
		2002			2003			2002			2003		
		Inbound	Outbound	Total	Inbound	Outbound	Total	Inbound	Outbound	Total	Inbound	Outbound	Total
Hong Kong	Gold Coast/Coolangatta	0	0	0	91	586	677	0.0	0.0	0.0	0.0	0.0	0.0
Nagoya	"	0	0	0	3,628	3,155	6,783	0.0	0.0	0.0	138.0	46.3	184.2
Osaka	"	0	0	0	4,727	4,031	8,758	0.0	0.0	0.0	201.4	54.9	256.3
Palmerston	"	6,508	6,403	12,911	1,949	1,898	3,847	0.0	0.0	0.0	0.0	0.0	0.0
Singapore	"	0	0	0	0	690	690	0.0	0.0	0.0	0.0	0.0	0.0
Taipei	"	0	0	0	562	507	1,069	0.0	0.0	0.0	0.0	0.0	0.0
Total	Gold Coast/Coolangatta	34,022	32,811	66,833	68,256	67,774	136,030	0.0	0.0	0.0	339.4	101.2	440.5
Amsterdam	Melbourne	0	0	0	0	0	0	0.0	0.0	0.0	75.6	4.1	79.7
Athens	"	9,629	10,056	19,685	3,057	2,553	5,610	110.1	74.1	184.2	26.7	9.2	35.9
Atlanta	"	0	0	0	0	0	0	931.1	0.0	931.1	1,035.4	0.0	1,035.4
Auckland	"	260,525	261,221	521,746	239,619	246,337	485,956	14,887.0	17,066.2	31,953.2	15,589.4	16,424.7	32,014.1
Bahrain	"	7,716	6,735	14,451	0	0	0	335.7	1,287.9	1,623.6	0.0	0.0	0.0
Bangkok	"	114,935	113,231	228,166	98,061	89,102	187,163	4,245.9	6,058.2	10,304.1	4,982.1	5,393.4	10,375.4
Beijing	"	9,061	4,235	13,296	9,771	5,021	14,792	46.3	177.8	224.1	145.1	205.3	350.4
Bombay	"	3,762	268	4,030	0	0	0	72.3	16.6	88.9	0.0	0.0	0.0
Buenos Aires	"	4,521	4,202	8,723	0	0	0	19.9	3.3	23.2	0.0	0.0	0.0
Chicago	"	1,684	2,097	3,781	2,028	1,915	3,943	3,949.1	0.0	3,949.1	4,646.0	0.0	4,646.0
Christchurch	"	77,094	74,964	152,058	81,774	80,533	162,307	1,859.6	1,355.6	3,215.1	2,269.1	1,478.2	3,747.3
Denpasar	"	55,676	53,054	108,730	39,321	35,330	74,651	1,961.2	2,389.9	4,351.2	1,440.1	1,633.3	3,073.4
Dubai	"	58,740	59,878	118,618	75,439	74,422	149,861	1,651.0	4,336.8	5,987.7	2,021.4	4,509.0	6,530.4
Dunedin	"	6,310	6,143	12,453	8,505	8,497	17,002	0.0	0.0	0.0	0.0	0.0	0.0
Frankfurt	"	14,392	13,851	28,243	5,324	4,127	9,451	2,082.3	1,896.2	3,978.4	1,099.4	1,592.4	2,691.8
Fukuoka	"	0	1	1	0	0	0	0.0	0.0	0.0	0.0	0.0	0.0
Guangzhou	"	20,410	11,043	31,453	15,064	10,699	25,763	1,102.4	284.5	1,386.8	829.1	399.6	1,228.7
Hamilton	"	11,513	11,000	22,513	12,853	12,558	25,411	0.0	0.0	0.0	0.0	0.0	0.0
Hanoi	"	1,976	1,861	3,837	2,005	2,290	4,295	8.3	10.7	19.0	0.0	26.7	26.7
Ho Chi Minh City	"	18,487	17,640	36,127	21,022	20,094	41,116	376.9	224.7	601.6	541.8	170.2	712.0
Hong Kong	"	128,195	131,788	259,983	131,147	125,881	257,028	9,606.3	13,475.3	23,081.6	9,613.8	13,889.4	23,503.1
Honolulu	"	7,185	12,765	19,950	3,919	7,805	11,724	264.1	284.6	548.7	131.4	165.9	297.3
Jakarta	"	8,830	4,558	13,388	3,183	175	3,358	40.1	282.1	322.2	8.4	107.0	115.4
Johannesburg	"	144	823	967	41	856	897	79.3	26.7	106.0	38.8	10.4	49.2
Karachi	"	0	0	0	0	0	0	0.0	26.0	26.0	0.0	11.2	11.2
Kuala Lumpur	"	104,425	111,330	215,755	114,492	116,494	230,986	6,612.7	8,841.0	15,453.7	12,321.5	9,172.7	21,494.1
Lahore	"	0	0	0	0	0	0	0.0	0.4	0.4	0.0	17.2	17.2
London	"	85,042	86,480	171,522	89,309	86,593	175,902	2,794.3	603.5	3,397.8	3,227.5	524.9	3,752.4
Los Angeles	"	103,682	105,750	209,432	115,835	116,462	232,297	2,879.1	3,155.2	6,034.2	2,816.6	3,863.9	6,680.4
Luxembourg	"	0	0	0	0	0	0	4,337.7	0.0	4,337.7	4,086.4	0.0	4,086.4
Manila	"	10,696	7,056	17,752	12,945	10,587	23,532	226.3	558.4	784.7	449.5	723.4	1,173.0
Mauritius	"	8,112	7,585	15,697	7,804	7,501	15,305	287.8	186.5	474.3	354.7	275.0	629.6
Nadi	"	30,568	29,399	59,967	32,468	32,337	64,805	555.1	789.4	1,344.4	887.6	1,027.3	1,914.9
Nagoya	"	66	756	822	0	0	0	44.7	46.6	91.2	6.8	22.1	28.9
Nauru	"	1,369	1,455	2,824	1,268	1,373	2,641	1.5	56.7	58.2	1.4	55.3	56.6
New Delhi	"	0	0	0	0	0	0	0.0	12.5	12.5	0.0	42.5	42.5
New York	"	4,757	4,755	9,512	2,523	3,023	5,546	924.8	70.3	995.0	558.3	227.2	785.5
Noumea	"	9	71	80	6	15	21	0.2	4.3	4.5	0.0	4.0	4.0

TABLE 5: SCHEDULED INTERNATIONAL TRAFFIC BY CITY PAIRS: Year ended June

Foreign Port	Australian Port	Passengers						Freight (tonnes)					
		2002			2003			2002			2003		
		Inbound	Outbound	Total	Inbound	Outbound	Total	Inbound	Outbound	Total	Inbound	Outbound	Total
Osaka	Melbourne	1	38	39	0	138	138	8.3	46.7	55.0	31.3	16.7	48.0
Palmerston	"	7,024	6,666	13,690	9,400	9,325	18,725	0.0	0.0	0.0	0.0	0.0	0.0
Paris	"	3,858	4,096	7,954	2,056	2,340	4,396	56.1	13.0	69.0	34.7	2.8	37.5
Penang	"	0	0	0	0	0	0	278.8	259.4	538.3	508.9	120.1	629.0
Port Moresby	"	98	7	105	26	0	26	1.7	19.9	21.6	0.0	3.0	3.0
Port Vila	"	4,942	4,701	9,643	0	0	0	2.7	29.3	32.0	0.0	0.0	0.0
Queenstown	"	487	381	868	1,007	943	1,950	0.0	0.0	0.0	0.0	0.0	0.0
Rome	"	23,687	22,907	46,594	14,238	4,307	18,545	631.3	63.0	694.2	514.1	3.9	518.0
San Francisco	"	11,793	12,258	24,051	5,080	5,169	10,249	123.4	871.6	995.0	56.9	393.5	450.4
Shanghai	"	0	0	0	5,944	3,724	9,668	0.0	0.0	0.0	5.2	14.0	19.2
Sharjah	"	0	0	0	0	0	0	0.0	3.0	3.0	0.0	14.2	14.2
Singapore	"	334,925	328,661	663,586	317,158	300,017	617,175	17,489.8	31,230.2	48,720.0	21,205.1	30,880.4	52,085.5
Taipei	"	892	741	1,633	372	222	594	20.9	32.9	53.8	2.2	7.9	10.1
Tokyo	"	28,926	20,453	49,379	51,846	26,240	78,086	767.7	541.5	1,309.1	1,130.6	2,224.2	3,354.8
Toledo	"	0	0	0	0	0	0	7.7	0.0	7.7	14.6	0.0	14.6
Toronto	"	4,346	4,520	8,866	906	927	1,833	223.7	556.2	779.9	30.2	119.0	149.3
Vienna	"	20,615	20,448	41,063	21,894	22,563	44,457	0.0	0.0	0.0	0.0	0.0	0.0
Wellington	"	53,693	56,760	110,453	48,227	50,988	99,215	188.8	126.9	315.7	149.0	131.4	280.4
Total	Melbourne	1,664,798	1,638,688	3,303,486	1,606,937	1,529,483	3,136,420	82,093.7	97,395.3	179,489.0	92,886.2	95,916.7	188,802.9
Auckland	Newcastle	4,303	4,182	8,485	1,066	1,010	2,076	0.0	0.0	0.0	0.0	0.0	0.0
Total	Newcastle	4,303	4,182	8,485	1,066	1,010	2,076	0.0	0.0	0.0	0.0	0.0	0.0
Auckland	Norfolk Island	8,314	8,383	16,697	7,832	7,650	15,482	110.6	24.0	134.6	103.9	14.3	118.2
Total	Norfolk Island	8,314	8,383	16,697	7,832	7,650	15,482	110.6	24.0	134.6	103.9	14.3	118.2
Auckland	Perth	35,316	34,130	69,446	39,231	39,548	78,779	1,580.6	700.1	2,280.7	1,641.4	847.0	2,488.3
Bandar Seri Begawan	"	20,378	21,353	41,731	20,021	20,449	40,470	151.7	946.3	1,098.0	183.1	1,011.6	1,194.7
Bangkok	"	36,685	35,148	71,833	35,738	34,692	70,430	692.4	2,065.3	2,757.7	1,187.7	1,852.5	3,040.2
Bombay	"	1,251	1,006	2,257	0	0	0	8.1	8.0	16.1	0.0	0.0	0.0
Buenos Aires	"	10	0	10	0	0	0	0.0	0.0	0.0	0.0	0.0	0.0
Chicago	"	0	0	0	0	0	0	4.3	0.0	4.3	0.0	0.0	0.0
Christchurch	"	314	0	314	151	0	151	3.6	0.0	3.6	0.6	1.7	2.3
Denpasar	"	91,293	90,599	181,892	65,696	64,592	130,288	291.0	549.5	840.5	218.3	439.5	657.7
Dubai	"	0	0	0	42,973	41,766	84,739	0.0	0.0	0.0	401.4	1,219.4	1,620.8
Frankfurt	"	5,269	5,493	10,762	3,896	3,779	7,675	12.1	33.1	45.3	11.4	22.9	34.3
Hong Kong	"	42,859	40,542	83,401	41,586	38,023	79,609	1,111.6	4,529.4	5,641.0	1,270.4	3,364.2	4,634.6
Honolulu	"	0	0	0	0	0	0	0.0	5.4	5.4	0.0	0.1	0.1
Jakarta	"	18,076	17,505	35,581	15,258	15,941	31,199	190.9	338.7	529.6	129.3	526.9	656.2
Johannesburg	"	49,598	41,481	91,079	51,939	45,897	97,836	870.9	2,007.0	2,877.9	1,378.0	1,918.7	3,296.6
Kuala Lumpur	"	95,009	91,005	186,014	86,594	81,985	168,579	1,881.7	3,073.4	4,955.0	2,025.3	2,714.8	4,740.1
Kuching	"	4,169	4,410	8,579	4,126	3,964	8,090	0.5	445.7	446.2	0.9	260.2	261.1
London	"	19,167	19,246	38,413	14,355	10,201	24,556	106.8	17.8	124.6	32.6	6.4	39.1
Los Angeles	"	5	16	21	42	0	42	0.7	0.2	0.8	0.2	4.6	4.8
Manila	"	0	0	0	0	0	0	0.6	0.3	1.0	0.0	0.0	0.0
Mauritius	"	5,710	5,739	11,449	5,746	5,809	11,555	92.2	443.8	536.1	33.7	330.4	364.1
Nagoya	"	0	0	0	0	0	0	0.0	0.0	0.0	0.0	0.0	0.0
New York	"	0	0	0	3	0	3	3.1	3.8	6.9	0.8	0.0	0.8

TABLE 5: SCHEDULED INTERNATIONAL TRAFFIC BY CITY PAIRS: Year ended June

Foreign Port	Australian Port	Passengers						Freight (tonnes)					
		2002			2003			2002			2003		
		Inbound	Outbound	Total	Inbound	Outbound	Total	Inbound	Outbound	Total	Inbound	Outbound	Total
Noumea	Perth	0	0	0	0	0	0	0.0	0.0	0.0	0.0	0.0	0.0
Osaka	"	0	0	0	0	0	0	0.0	0.0	0.0	0.0	0.0	0.0
Paris	"	2,623	3,184	5,807	7,439	5,626	13,065	5.9	24.8	30.8	274.7	38.1	312.8
Phuket	"	11,731	11,591	23,322	11,331	10,711	22,042	0.0	7.8	7.8	0.0	66.2	66.2
Port Moresby	"	0	0	0	0	0	0	0.0	0.0	0.0	0.0	0.0	0.0
Queenstown	"	0	2	2	10	0	10	0.0	0.0	0.0	0.0	0.0	0.0
Rome	"	564	678	1,242	3,312	1,747	5,059	0.6	0.1	0.6	137.7	1.5	139.2
Singapore	"	354,329	332,687	687,016	336,732	312,380	649,112	6,691.3	20,520.1	27,211.4	7,025.8	18,632.2	25,658.0
Taipei	"	0	0	0	0	0	0	0.4	0.3	0.7	0.0	0.0	0.0
Tokyo	"	24,521	22,982	47,503	25,628	24,573	50,201	389.6	1,145.7	1,535.3	448.0	1,125.8	1,573.9
Wellington	"	47	0	47	53	0	53	0.0	0.0	0.0	0.0	0.0	0.0
Total	Perth	818,924	778,797	1,597,721	811,860	761,683	1,573,543	14,090.6	36,866.7	50,957.4	16,401.2	34,384.6	50,785.8
Abu Dhabi	Sydney	0	0	0	0	0	0	0.0	0.0	0.0	0.0	8.6	8.6
Amsterdam	"	0	0	0	0	0	0	10,554.6	2,072.6	12,627.2	9,805.6	1,673.0	11,478.6
Apia	"	4,163	3,905	8,068	4,473	4,752	9,225	57.7	17.9	75.6	61.8	43.6	105.4
Athens	"	15,355	14,569	29,924	2,695	2,655	5,350	171.2	72.1	243.2	17.6	8.8	26.4
Atlanta	"	0	0	0	0	0	0	252.9	0.0	252.9	244.1	0.0	244.1
Auckland	"	475,962	493,958	969,920	503,061	524,900	1,027,961	21,488.1	26,862.2	48,350.3	21,512.0	27,426.0	48,938.0
Bahrain	"	14,115	12,509	26,624	0	0	0	293.0	530.4	823.5	0.0	0.0	0.0
Bangkok	"	230,703	217,755	448,458	223,410	224,931	448,341	5,943.0	4,190.4	10,133.3	6,920.0	4,883.2	11,803.2
Beijing	"	28,159	28,455	56,614	25,411	27,147	52,558	199.8	517.2	717.0	272.9	474.0	746.9
Bombay	"	6,680	9,125	15,805	0	0	0	53.1	46.9	100.1	0.0	0.0	0.0
Buenos Aires	"	21,725	25,085	46,810	13,383	13,120	26,503	152.6	294.4	447.0	94.9	194.5	289.4
Cairo	"	14,203	14,646	28,849	1,662	749	2,411	336.1	364.4	700.4	34.1	28.5	62.6
Cebu	"	158	163	321	0	0	0	3.5	3.4	6.9	0.0	0.0	0.0
Chicago	"	8,813	7,927	16,740	7,213	6,351	13,564	3,866.0	0.0	3,866.0	1,812.7	0.0	1,812.7
Christchurch	"	194,918	198,467	393,385	207,127	209,936	417,063	4,266.6	4,284.1	8,550.6	4,903.3	4,817.0	9,720.3
Colombo	"	2,044	1,724	3,768	0	0	0	95.5	42.1	137.5	0.0	0.0	0.0
Denpasar	"	90,125	92,715	182,840	63,710	66,262	129,972	1,870.2	1,531.9	3,402.2	1,675.3	1,446.3	3,121.7
Dubai	"	41,243	44,461	85,704	53,510	57,262	110,772	1,898.3	1,788.2	3,686.5	2,159.1	2,347.7	4,506.8
Dunedin	"	8,181	7,973	16,154	9,355	9,183	18,538	0.0	0.0	0.0	0.0	0.0	0.0
Frankfurt	"	25,624	29,526	55,150	33,574	33,422	66,996	1,473.7	118.1	1,591.8	1,599.9	125.8	1,725.7
Fukuoka	"	877	1,392	2,269	0	0	0	0.0	0.0	0.0	0.0	0.0	0.0
Guangzhou	"	28,055	33,922	61,977	26,766	27,899	54,665	767.0	141.9	908.8	1,401.3	250.0	1,651.3
Hamilton	"	11,160	11,302	22,462	11,364	11,673	23,037	0.0	0.0	0.0	0.0	0.0	0.0
Hanoi	"	2,941	3,311	6,252	518	345	863	3.8	46.1	49.8	0.0	0.0	0.0
Ho Chi Minh City	"	19,337	18,805	38,142	3,975	3,408	7,383	506.8	221.4	728.2	104.3	69.1	173.4
Hong Kong	"	283,833	279,308	563,141	275,678	254,957	530,635	13,617.0	15,611.6	29,228.5	15,834.4	14,657.4	30,491.8
Honolulu	"	63,276	59,782	123,058	68,289	60,215	128,504	1,368.9	1,751.9	3,120.8	1,941.0	2,245.5	4,186.5
Jakarta	"	40,166	47,973	88,139	37,359	41,098	78,457	597.6	1,326.6	1,924.1	583.1	1,478.8	2,061.8
Johannesburg	"	62,128	56,234	118,362	63,114	55,650	118,764	1,100.8	321.2	1,422.0	1,004.0	318.8	1,322.8
Kota Kinabalu	"	0	0	0	20	263	283	0.0	0.0	0.0	0.0	0.1	0.1
Kuala Lumpur	"	147,150	140,216	287,366	157,617	141,711	299,328	5,402.1	3,050.4	8,452.4	9,671.5	3,556.7	13,228.2
London	"	178,929	183,469	362,398	171,068	186,724	357,792	6,210.2	1,889.8	8,100.0	5,766.7	1,629.9	7,396.6
Los Angeles	"	339,322	341,670	680,992	317,692	323,213	640,905	19,492.8	8,172.2	27,665.1	19,651.0	5,624.7	25,275.8

TABLE 5: SCHEDULED INTERNATIONAL TRAFFIC BY CITY PAIRS: Year ended June

Foreign Port	Australian Port	Passengers						Freight (tonnes)					
		2002			2003			2002			2003		
		Inbound	Outbound	Total	Inbound	Outbound	Total	Inbound	Outbound	Total	Inbound	Outbound	Total
Louisville	Sydney	0	0	0	0	0	0	4,480.4	0.0	4,480.4	5,007.2	0.0	5,007.2
Luzon Island	"	0	0	0	0	0	0	0.0	0.0	0.0	0.0	34.5	34.5
Manila	"	49,528	52,116	101,644	49,526	47,814	97,340	1,298.7	1,435.6	2,734.4	1,544.1	994.6	2,538.7
Nadi	"	95,636	96,704	192,340	104,484	104,104	208,588	3,361.7	2,734.8	6,096.5	2,706.4	2,575.0	5,281.4
Nagoya	"	22,179	33,809	55,988	4,875	5,695	10,570	885.5	1,043.8	1,929.3	153.6	45.6	199.1
Nauru	"	174	135	309	0	0	0	0.2	1.4	1.7	0.0	0.0	0.0
New York	"	17,619	16,639	34,258	18,535	18,228	36,763	3,689.1	310.1	3,999.1	2,891.7	528.7	3,420.4
Niue	"	0	0	0	49	0	49	0.0	0.0	0.0	0.1	0.0	0.1
Noumea	"	42,113	41,570	83,683	40,682	37,568	78,250	23.3	455.9	479.2	25.4	525.4	550.9
Osaka	"	49,755	136,416	186,171	39,673	102,530	142,203	1,302.2	3,772.6	5,074.7	1,234.5	2,538.2	3,772.7
Pago Pago	"	0	0	0	0	0	0	0.3	0.0	0.3	0.0	0.0	0.0
Palmerston	"	9,828	9,427	19,255	8,848	8,598	17,446	0.0	0.0	0.0	0.0	0.0	0.0
Papeete	"	334	3,468	3,802	0	1,905	1,905	0.0	10.7	10.7	0.0	3.3	3.3
Paris	"	18,170	18,986	37,156	8,109	7,106	15,215	618.4	52.6	671.0	215.8	17.2	233.0
Port Moresby	"	11,738	10,890	22,628	11,858	11,653	23,511	307.1	491.7	798.9	358.3	309.4	667.7
Port Vila	"	15,323	15,328	30,651	18,415	18,218	36,633	91.6	180.6	272.2	59.5	178.2	237.6
Queenstown	"	7,589	8,396	15,985	7,694	8,362	16,056	0.0	0.0	0.0	0.0	0.0	0.1
Rome	"	17,493	14,950	32,443	8,262	8,167	16,429	656.8	16.7	673.5	235.4	8.1	243.5
San Francisco	"	78,004	80,932	158,936	82,423	87,462	169,885	815.0	2,667.5	3,482.5	1,200.7	3,161.6	4,362.3
Santiago	"	0	0	0	17,416	18,998	36,414	0.0	0.0	0.0	403.6	228.5	632.1
Sapporo	"	0	0	0	0	0	0	0.0	0.0	0.0	0.0	25.0	25.0
Seoul	"	156,750	155,018	311,768	167,492	160,228	327,720	8,164.4	10,842.4	19,006.8	5,567.0	11,023.5	16,590.6
Shanghai	"	45,800	40,558	86,358	44,575	41,156	85,731	1,481.2	579.6	2,060.8	1,891.7	352.8	2,244.5
Sharjah	"	0	0	0	0	0	0	0.0	0.0	0.0	0.0	21.2	21.2
Singapore	"	491,253	471,153	962,406	465,607	425,379	890,986	24,877.8	26,183.0	51,060.8	25,861.7	19,802.6	45,664.2
Subic Bay	"	0	0	0	0	0	0	0.0	9,961.1	9,961.1	0.0	8,880.8	8,880.8
Suva	"	6,123	7,083	13,206	7,721	10,528	18,249	9.4	11.1	20.5	1.3	13.3	14.7
Taipei	"	52,970	51,419	104,389	47,218	44,968	92,186	1,582.3	1,939.6	3,521.9	1,650.6	2,171.4	3,822.1
Tokyo	"	185,971	206,535	392,506	200,219	232,179	432,398	3,156.1	8,139.7	11,295.8	4,220.9	6,290.1	10,511.1
Toledo	"	0	0	0	0	0	0	354.1	0.0	354.1	611.9	0.0	611.9
Tongatapu	"	1,979	1,664	3,643	2,543	3,164	5,707	66.0	15.9	81.9	74.0	1.9	75.9
Toronto	"	0	0	0	205	0	205	0.0	0.0	0.0	1.7	5.9	7.7
Vancouver	"	35,069	37,184	72,253	39,945	44,205	84,150	762.6	2,046.4	2,809.0	318.1	1,317.5	1,635.6
Vienna	"	37,412	45,633	83,045	58,230	60,815	119,045	0.0	0.0	0.0	0.0	0.0	0.0
Wellington	"	110,276	113,374	223,650	107,404	112,080	219,484	420.3	119.3	539.5	408.8	158.8	567.6
Total	Sydney	3,918,431	4,049,734	7,968,165	3,844,052	3,908,936	7,752,988	160,447.3	148,281.3	308,728.7	163,714.9	134,521.2	298,236.1
Auckland	Townsville	4	0	4	0	0	0	0.0	0.0	0.0	0.0	0.0	0.0
Bombay	"	2	0	2	0	0	0	0.0	0.0	0.0	0.0	0.0	0.0
Frankfurt	"	0	1	1	0	0	0	0.0	0.0	0.0	0.0	0.0	0.0
London	"	0	1	1	0	0	0	0.0	0.0	0.0	0.0	0.0	0.0
Los Angeles	"	0	0	0	0	0	0	0.0	0.2	0.2	0.0	0.0	0.0
Manila	"	0	0	0	0	0	0	0.0	0.0	0.0	0.0	0.0	0.0
Singapore	"	62	76	138	0	0	0	0.0	0.2	0.2	0.0	0.0	0.0
Wellington	"	0	1	1	0	0	0	0.0	0.0	0.0	0.0	0.0	0.0
Total	Townsville	68	79	147	0	0	0	0.0	0.5	0.5	0.0	0.0	0.0

TABLE 5: SCHEDULED INTERNATIONAL TRAFFIC BY CITY PAIRS: Year ended June

Foreign Port	Australian Port	Passengers						Freight (tonnes)					
		2002			2003			2002			2003		
		Inbound	Outbound	Total	Inbound	Outbound	Total	Inbound	Outbound	Total	Inbound	Outbound	Total
Abu Dhabi	Australia	0	0	0	0	0	0	0.0	0.0	0.0	0.0	8.6	8.6
Amsterdam	"	0	0	0	0	0	0	10,554.6	2,072.6	12,627.2	10,053.2	1,677.1	11,730.3
Apia	"	4,163	3,905	8,068	4,473	4,752	9,225	57.7	17.9	75.6	61.8	43.6	105.4
Athens	"	24,984	24,625	49,609	5,752	5,208	10,960	281.3	146.1	427.4	44.3	18.0	62.3
Atlanta	"	0	0	0	0	0	0	1,184.0	0.0	1,184.0	1,279.5	0.0	1,279.5
Auckland	"	1,036,519	1,060,891	2,097,410	1,080,665	1,115,689	2,196,354	44,822.1	52,526.1	97,348.3	46,659.4	53,071.0	99,730.5
Bahrain	"	21,831	19,244	41,075	0	0	0	628.7	1,818.3	2,447.1	0.0	0.0	0.0
Bandar Seri Begawan	"	51,249	54,228	105,477	52,286	54,200	106,486	598.2	2,651.5	3,249.7	1,018.4	2,714.3	3,732.7
Bangkok	"	410,190	394,855	805,045	383,795	376,457	760,252	11,461.8	13,653.9	25,115.7	13,943.6	13,390.4	27,334.0
Beijing	"	37,220	32,690	69,910	35,182	32,168	67,350	246.1	695.0	941.1	418.0	679.3	1,097.3
Bombay	"	13,768	11,270	25,038	0	0	0	182.9	74.0	256.9	0.0	0.0	0.0
Buenos Aires	"	28,557	29,564	58,121	13,383	13,120	26,503	177.5	304.5	482.0	94.9	194.5	289.4
Cairo	"	14,203	14,646	28,849	1,662	749	2,411	336.1	364.4	700.4	34.1	28.5	62.6
Cebu	"	158	163	321	0	0	0	3.5	3.4	6.9	0.0	0.0	0.0
Chicago	"	10,497	10,024	20,521	9,241	8,266	17,507	7,863.7	0.0	7,863.7	6,460.0	0.0	6,460.0
Christchurch	"	356,772	359,413	716,185	371,904	372,593	744,497	7,083.2	7,060.7	14,143.9	7,948.4	7,363.0	15,311.3
Colombo	"	2,044	1,724	3,768	0	0	0	95.5	42.1	137.5	0.0	0.0	0.0
Denpasar	"	297,389	298,982	596,371	212,552	209,898	422,450	4,902.7	5,310.9	10,213.6	4,018.4	4,175.8	8,194.2
Dubai	"	99,983	104,339	204,322	171,922	173,450	345,372	3,549.3	6,125.0	9,674.3	4,581.9	8,076.0	12,657.9
Dunedin	"	31,245	31,304	62,549	39,054	38,924	77,978	0.0	0.0	0.0	0.0	0.0	0.0
Frankfurt	"	61,205	68,784	129,989	54,000	54,813	108,813	3,719.8	2,068.8	5,788.6	2,904.2	1,753.6	4,657.8
Fukuoka	"	1,337	1,674	3,011	10,906	11,836	22,742	0.0	0.0	0.0	14.8	83.4	98.2
Guam	"	10,675	10,720	21,395	10,856	11,112	21,968	0.3	39.1	39.4	0.3	39.3	39.6
Guangzhou	"	48,465	44,965	93,430	41,830	38,598	80,428	1,869.3	426.3	2,295.7	2,230.4	649.6	2,880.0
Hamilton	"	57,404	57,183	114,587	55,486	56,635	112,121	0.0	0.0	0.0	0.0	0.0	0.0
Hanoi	"	4,917	5,172	10,089	2,523	2,635	5,158	12.0	56.8	68.8	0.0	26.7	26.7
Ho Chi Minh City	"	37,824	36,445	74,269	24,997	23,502	48,499	883.7	446.2	1,329.8	646.1	239.3	885.4
Hong Kong	"	569,497	550,284	1,119,781	558,154	512,810	1,070,964	27,365.1	41,721.9	69,087.0	30,070.4	40,253.4	70,323.8
Honiara	"	6,900	6,611	13,511	8,266	8,608	16,874	102.2	49.5	151.8	105.0	86.8	191.8
Honolulu	"	71,500	73,603	145,103	73,085	68,222	141,307	1,633.1	2,085.0	3,718.2	2,076.9	2,445.1	4,522.0
Jakarta	"	69,541	70,920	140,461	57,064	57,461	114,525	831.3	1,973.4	2,804.7	721.9	2,144.5	2,866.5
Johannesburg	"	111,870	98,934	210,804	115,128	102,604	217,732	2,066.8	2,383.2	4,450.0	2,455.4	2,254.7	4,710.1
Karachi	"	0	0	0	0	0	0	0.0	26.0	26.0	0.0	11.2	11.2
Kota Kinabalu	"	0	0	0	20	263	283	0.0	0.0	0.0	0.0	0.1	0.1
Kuala Lumpur	"	453,391	446,811	900,202	437,180	414,930	852,110	16,908.0	18,570.4	35,478.4	26,971.5	17,747.2	44,718.7
Kuching	"	4,169	4,410	8,579	4,126	3,964	8,090	0.5	445.7	446.2	0.9	260.2	261.1
Kupang	"	0	0	0	0	0	0	0.0	0.0	0.0	0.0	0.0	0.0
Lahore	"	0	0	0	0	0	0	0.0	0.4	0.4	0.0	17.2	17.2
London	"	310,732	317,729	628,461	288,949	297,928	586,877	9,343.3	2,613.8	11,957.1	9,152.9	2,209.9	11,362.8
Los Angeles	"	479,000	480,709	959,709	473,918	478,323	952,241	23,283.7	12,131.8	35,415.5	23,283.4	10,232.0	33,515.4
Louisville	"	0	0	0	0	0	0	4,480.4	0.0	4,480.4	5,007.2	0.0	5,007.2
Luxembourg	"	0	0	0	0	0	0	4,337.7	0.0	4,337.7	4,086.4	0.0	4,086.4
Luzon Island	"	0	0	0	0	0	0	0.0	0.0	0.0	0.0	34.5	34.5
Manila	"	66,104	64,763	130,867	69,041	63,997	133,038	1,537.7	2,092.8	3,630.5	2,020.2	1,775.6	3,795.9
Mauritius	"	13,822	13,324	27,146	13,550	13,310	26,860	380.1	630.3	1,010.4	388.4	605.4	993.7

TABLE 5: SCHEDULED INTERNATIONAL TRAFFIC BY CITY PAIRS: Year ended June

Foreign Port	Australian Port	Passengers						Freight (tonnes)					
		2002			2003			2002			2003		
		Inbound	Outbound	Total	Inbound	Outbound	Total	Inbound	Outbound	Total	Inbound	Outbound	Total
Nadi	Australia	151,770	151,176	302,946	166,599	165,267	331,866	4,083.9	3,757.0	7,840.9	3,721.2	3,854.5	7,575.7
Nagoya	"	92,676	92,330	185,006	72,856	74,448	147,304	1,120.9	1,882.9	3,003.8	450.7	1,692.9	2,143.7
Nauru	"	5,880	5,593	11,473	5,691	5,611	11,302	11.1	223.5	234.6	14.4	260.7	275.1
New Delhi	"	0	0	0	0	0	0	0.0	12.5	12.5	0.0	42.5	42.5
New York	"	22,531	21,540	44,071	21,266	21,315	42,581	4,710.9	404.5	5,115.4	3,470.4	759.4	4,229.8
Niue	"	0	0	0	49	0	49	0.0	0.0	0.0	0.1	0.0	0.1
Noumea	"	58,326	58,956	117,282	57,279	55,598	112,877	36.9	620.5	657.5	48.9	699.1	748.0
Osaka	"	201,663	190,833	392,496	186,346	176,580	362,926	2,568.1	6,402.8	8,971.0	2,567.0	5,052.9	7,619.9
Pago Pago	"	0	0	0	0	0	0	0.3	0.0	0.3	0.0	0.0	0.0
Palmerston	"	38,606	37,834	76,440	37,879	37,498	75,377	0.0	0.0	0.0	0.0	0.0	0.0
Papeete	"	334	3,468	3,802	0	1,905	1,905	0.0	10.7	10.7	0.0	3.3	3.3
Paris	"	28,688	32,354	61,042	19,325	17,945	37,270	688.7	108.9	797.6	545.1	64.1	609.3
Penang	"	0	0	0	0	0	0	278.8	259.4	538.3	508.9	120.1	629.0
Phuket	"	11,731	11,591	23,322	11,331	10,711	22,042	0.0	7.8	7.8	0.0	66.2	66.2
Port Moresby	"	72,100	71,517	143,617	63,003	63,153	126,156	1,691.5	2,727.3	4,418.7	1,516.4	2,377.2	3,893.7
Port Vila	"	30,420	30,095	60,515	28,448	28,033	56,481	134.3	355.6	489.9	101.0	306.0	407.0
Queenstown	"	10,344	11,067	21,411	11,162	11,748	22,910	0.0	0.0	0.0	0.0	0.0	0.1
Rome	"	43,506	40,680	84,186	28,692	23,103	51,795	1,360.3	81.7	1,442.0	976.0	30.9	1,006.9
San Francisco	"	89,797	93,190	182,987	87,503	92,631	180,134	938.4	3,539.1	4,477.5	1,257.5	3,555.1	4,812.7
Santiago	"	0	0	0	17,416	18,998	36,414	0.0	0.0	0.0	403.6	228.5	632.1
Sapporo	"	0	0	0	0	96	96	0.0	0.0	0.0	0.0	25.0	25.0
Seoul	"	183,165	178,320	361,485	196,066	184,200	380,266	8,631.6	12,369.2	21,000.9	5,996.5	12,662.8	18,659.3
Shanghai	"	45,800	40,558	86,358	50,519	44,880	95,399	1,481.2	579.6	2,060.8	1,896.9	366.8	2,263.7
Sharjah	"	0	0	0	0	0	0	0.0	3.0	3.0	0.0	35.4	35.4
Singapore	"	1,487,714	1,432,621	2,920,335	1,451,791	1,364,819	2,816,610	55,974.3	96,911.5	152,885.8	63,795.6	86,895.1	150,690.7
Subic Bay	"	0	0	0	0	0	0	0.0	9,961.1	9,961.1	0.0	8,880.8	8,880.8
Suva	"	6,123	7,083	13,206	7,721	10,528	18,249	9.4	11.1	20.5	1.3	13.3	14.7
Taipei	"	87,523	84,848	172,371	81,305	79,042	160,347	2,939.2	3,668.5	6,607.6	3,397.6	3,609.5	7,007.2
Tokyo	"	475,532	487,858	963,390	517,677	523,351	1,041,028	7,280.6	18,120.8	25,401.4	9,062.1	17,134.9	26,197.0
Toledo	"	0	0	0	0	0	0	368.6	0.0	368.6	627.0	0.0	627.0
Tongatapu	"	1,979	1,664	3,643	2,543	3,164	5,707	66.0	15.9	81.9	74.0	1.9	75.9
Toronto	"	4,346	4,520	8,866	1,111	927	2,038	223.7	556.2	779.9	32.0	125.0	157.0
Vancouver	"	35,069	37,184	72,253	39,945	44,205	84,150	762.6	2,046.4	2,809.0	318.1	1,317.5	1,635.6
Vienna	"	58,027	66,081	124,108	80,124	83,378	163,502	0.0	0.0	0.0	0.0	0.0	0.0
Wellington	"	210,586	215,113	425,699	203,205	210,456	413,661	643.6	286.7	930.3	571.5	311.9	883.4
Total	Australia	8,273,361	8,212,982	16,486,343	8,127,802	7,980,615	16,108,417	288,789.1	345,552.3	634,341.4	310,106.2	324,803.7	634,909.9

Please refer to explanatory notes - paragraphs 3, 8 and 13 in particular.

**TABLE 6 : INTERNATIONAL AIRLINES
OWN STOPOVER REVENUE PASSENGERS,
AUSTRALIAN CITY PAIRS**

YEAR ENDED JUNE 2003

City Pair Route	Total Passengers
Brisbane/Sydney	45,107
Melbourne/Sydney	40,541
Brisbane/Cairns	1,957
Adelaide/Melbourne	96
TOTAL	87,701

Notes:

1. Own Stopover Revenue Passengers : The aggregate of revenue passengers uplifted at one Australian airport and discharged (excluding transit passengers) at another Australian airport by the same foreign registered international airline on which they entered or left Australia.
2. City Pair Route represents the aggregation of passengers travelling in both directions.
3. This data are supplementary to the information previously supplied to the Department by most international airlines. Tables 1-5 cover only those passengers travelling to/from overseas airports. The inclusion of this additional data provides a more complete coverage of international airline activity.

TABLE 7: TOTAL AIRCRAFT MOVEMENTS AT AUSTRALIAN INTERNATIONAL AIRPORTS BY AIRCRAFT TYPES: Year ended June 2003

Airport	Aircraft Types																		
	Passenger/Mixed												Freighters					All Types	
	310	330	340	737	747	74M	757	767	777	M11	D10	F28	72F	74F	76F	M1F	D1F		
Adelaide		214	8		170			633	631					24					1,680
Brisbane	81	1,164		5,002	4,834	2		3,812	1,394	854				2					17,145
Cairns	8	416		216	737			4,918				1,217							7,512
Darwin				389	8		178	736											1,311
Gold Coast/Coolangatta				1,218				492											1,710
Melbourne	82	1,587	181	3,291	4,646			5,438	3,571	1,058				799		340			20,993
Newcastle				36															36
Norfolk Island				202															202
Perth	154	1,149	203	683	964			2,298	2,894			42		36					8,423
Sydney	102	1,548	1,478	8,324	19,232		81	9,812	3,940	647			438	858	60	549	2		47,071
Australia	427	6,078	1,870	19,361	30,591	2	259	28,139	12,430	2,559	42	1,217	438	1,719	60	889	2		106,083

% of All Types 0.4 5.7 1.8 18.3 28.8 0.0 0.2 26.5 11.7 2.4 0.0 1.1 0.4 1.6 0.1 0.8 0.0 100.0

NOTE:

These figures only cover scheduled operations of the airlines listed in this publication. Charter/ferry operations are not included. These figures are available electronically for January 2001 onwards. Prior to this, aircraft type data is not readily accessible.

Aircraft Types (all series)

Airbus	310	320	330	340															
Boeing	737	747	74M	757	767	777	72F	74F	76F										
McDonnell Douglas	M11	D10	M1F	D1F															
Fokker	F28																		
BAE	146																		
de Havilland	DH8																		