



DEPARTMENT OF TRANSPORT AND REGIONAL SERVICES

AIR TRANSPORT STATISTICS

INTERNATIONAL AIRLINES

2001-02



INTERNATIONAL SCHEDULED AIR TRANSPORT

2001-02

**BUREAU OF
TRANSPORT AND REGIONAL ECONOMICS**

**DEPARTMENT OF
TRANSPORT AND REGIONAL SERVICES**

Issue Number 1/114

© COMMONWEALTH OF AUSTRALIA

CANBERRA

NOVEMBER 2002

ISSN 1324-5074

This work is copyright and the data contained in this publication should not be reproduced or used in any form without acknowledgment.

INQUIRIES

Should you require additional information about the statistics contained in this publication, please contact Mrs Betty Kell in Canberra by telephone (02) 6274 7791 or by facsimile (02) 6274 7727

or write to:

AVSTATS, Bureau of Transport and Regional Economics
Department of Transport and Regional Services
GPO Box 594
Canberra ACT 2601
Electronic Mail: AVSTATS@dotars.gov.au

CONTENTS

Table		Page
..	Explanatory Notes	iv-v
..	Data Status & Additional or other Changes to Services	vi
..	Industry Analysis	vii-xi
..	Summary	xii
1	Scheduled International Air Traffic to and from Australia	1-3
2	Scheduled Operator Market Shares and Growth	4-8
3	Airline Passenger Capacity and Utilisation to and from Australia by Operator	9-11
4	Australian International Airport Scheduled Traffic and Aircraft Movements	12-13
5	Scheduled International Passengers and Freight by City Pairs	14-23
6	International Airlines Own Stopover Revenue Passengers, Australian City Pairs	24
7	Total Aircraft Movements at Australian International Airports by Aircraft Types	25

EXPLANATORY NOTES

INTRODUCTION

1. This publication continues the series of publications on a financial year basis presenting statistical information on the scheduled operations of international airlines operating into/out of Australia.
2. The figures in this publication were obtained from reports submitted by scheduled international carriers and are the best available at the time of publication.

COVERAGE

3. These statistics show **uplift/discharge** data – These data detail, by direction, the revenue traffic between the actual points of uplift and discharge within each flight, aggregated for all flights within the period. It shows the movement of traffic between two airports not necessarily directly connected but within the same flight number. Typically, flight numbers change when an aircraft reaches its home country. This means that uplift/discharge data for the port in the operator's home country are likely to be overstated by traffic whose origin/destination point is beyond that port. For example, uplift/discharge traffic reported in this publication as Singapore could include traffic whose origin/destination is Europe.
4. These statistics cover **revenue** traffic carried by the operators of scheduled regular public international air transport services only and **do not include charter traffic**.
5. Some airlines (generally, dedicated freighter operators) operate scheduled services into Australia but operate non-scheduled services out of Australia and therefore outbound activity is not recorded in this data collection.

PRODUCTION AND INTERPRETATION

6. **Tables 1 and 2** show the country of the relevant uplift or discharge port served by that airline. For example, traffic uplifted/discharged between Sydney and Singapore by British Airways would be shown as Singapore traffic in Tables 1 and 2.
7. **Table 3** shows figures for the country of service (or route) for each airline and therefore may not equate to the data in Tables 1 and 2. For example, the British Airways UK service identified in Table 3 could include passengers uplifted or discharged in Singapore or Thailand as well as the UK; these passengers would be shown individually under those countries in Tables 1 and 2. The difference in treatment of data between Tables 1 and 2 and Table 3 is necessary in order to work out a meaningful Seat Utilisation figure for Table 3.

Figures shown in Table 3 may include **total traffic** into and out of Australia for airlines that fly through Australia (also necessary in order to work out a meaningful Seat Utilisation figure). Therefore, figures in Table 3 may not equate to figures in Tables 1 and 2. For example, passengers carried by Qantas Airways from New Zealand **via** Australia to the UK will be included in Table 3 but will not be included in Tables 1 or 2 as these passengers were not uplifted/discharged in Australia.

8. **Table 5** – shows uplift/discharge passenger and freight data for directly connected city pairs. Statistics reported in this table for city pairs without direct international flight connections, mainly reflect carriage on interconnecting international services by Qantas Airways. This traffic should be interpreted as increasing the volume of traffic between the primary international ports rather than as an indicator of traffic volumes between ports without direct international flight connections. It should be noted however, that there is no double counting of traffic. For example, there is no direct connection between Adelaide and London and the traffic reported between Adelaide and London should be interpreted as adding to traffic between Adelaide and Singapore or Melbourne/Sydney and London.
9. Where figures have been rounded, discrepancies may occur between sums of component items and totals, and in percentage changes which are derived from figures prior to rounding.
10. Published figures may be revised where figures missing at the time of publication are received or misreporting/miscalculation necessitates revisions.

11. Reporting of Code Share services:

Reporting of traffic split by airline code for code share arrangements was discontinued as of June 2000. From July 2000, ALL traffic carried is reported under the operating airline regardless of code share arrangements.

Monthly airline market share figures for July 2001 onwards will be comparable with the same month in the previous year. However, these figures may not be comparable with monthly data prior to July 2000.

DEFINITIONS

12. The following definitions have been used in this publication:

- (a) Aircraft Movement: A landing or a take off.
- (b) Freight: The aggregate of all revenue freight uplifted.
- (c) Inbound: Inbound to Australia/Australian international airport.
- (d) Mail: The aggregate of all mail uplifted.
- (e) Outbound: Outbound from Australia/Australian international airport.
- (f) Revenue Passengers:

From July 2000 onwards: All passengers paying any fare (frequent flyer redemption passengers are regarded as revenue passengers). In most cases, Revenue Passengers will now include all passengers excluding Free Of Charge passengers and positioning crew.

To December 1999: The aggregate of all passengers paying 25% or more of the standard air fare (as defined by ICAO).

January 2000 to June 2000: Transition period.

The Revenue Passenger definition change could result in approximately a three per cent increase in passenger numbers over a full period (month or year).

- (g) Seat Utilisation: The ratio of passengers carried to seats available, expressed as a percentage.
- (h) Seats Available: Generally based on standard aircraft configuration, the aggregate of seats available on all flights operated over a particular service.
- (i) Services: Scheduled flights over authorised routes which are listed according to the main ports involved.

SYMBOLS AND OTHER USAGE

- nil or zero
- .. not applicable

INDEMNITY STATEMENT

The Bureau of Transport and Regional Economics has taken due care in preparing the information contained in this publication. However, noting that data have been provided by third parties, the Commonwealth gives no warranty as to the accuracy, reliability, fitness for purpose, or otherwise of the information.

NO/INCOMPLETE DATA FOR 2001-02 PROVIDED BY THE FOLLOWING AIRLINES PRIOR TO FINALISATION OF THIS PUBLICATION

Lauda Air	No outbound freight data for September 2000 onwards. No inbound freight data for April 2001 onwards.
Merpati Nusantara Airlines	No data for August 2001 onwards.
Solomon Airlines	Latest data received is for June 2001.

AIRLINES COMMENCING/WITHDRAWING SERVICES DURING 2001-02

- The following airlines commenced services to/from Australia
 - Gemini Air Cargo
- The following airlines ceased services to/from Australia
 - Ansett International
 - Evergreen International Airlines
 - Gulf Air
 - SriLankan Airlines

INTERNATIONAL AVIATION INDUSTRY ANALYSIS

YEAR ENDED JUNE 2002

- The year ended June 2002 saw a decrease of 4.0% in the number of revenue passengers carried and a decrease of 4.6% in freight carried on international scheduled air services to and from Australia when compared with the previous year.

Passenger Traffic

- Chart I shows total passenger traffic for the years ended June 1992 to 2002.
- Over this period, 2001-02 is the only year to have recorded a decrease in traffic compared to the previous year.
- Passenger traffic in 2001-02 was affected by the terrorist attacks on the USA in September 2001 and the flow on effects such as the war on terrorism, heightened tensions and security concerns the world over.
- The collapse of Ansett International (also in September 2001) has also affected traffic levels in 2001-02. In the year ended August 2001 (last full year of operations), it carried 559,756 passengers (3.2% of the total) on 2,961 flights with 823,825 seats made available.
- Chart II shows total passenger traffic by month for 1999-00, 2000-01 and 2001-02.
- Since September 2001, monthly passenger traffic has been less than levels recorded in the previous year for all months except March 2002. It should be noted that there may have been some transfer of traffic from April to March in 2002 because the Easter holiday period commenced in March.
- Chart III shows the passenger market shares for the top ten airlines for 2001-02. The top ten airlines accounted for 82.6% of the total market.
- Singapore Airlines has replaced Air New Zealand as the second largest carrier by increasing its market share from 10.5% in 2000-01 to 11.8% in 2001-02. Air New Zealand's share has dropped from 10.9% to 9.7% while its wholly owned subsidiary Freedom Air has increased its share from 1.4% to 1.8% over the same period.
- The Australian airline market share has dropped from 37.5% in 2000-01 to 35.2% in 2001-02. This reflects the cessation of Ansett International in September 2001.
- Table I shows total passenger traffic carried by uplift/discharge city pairs for 1999-00, 2000-01 and 2001-02.
- Table III provides a breakdown of passenger traffic by major uplift/discharge countries for 1999-00, 2000-01 and 2001-02. Of the top ten countries in 2001-02, only Singapore, Thailand and Korea have recorded increased traffic levels over the previous year.
- Table IV provides a breakdown of passenger traffic through Australian international airports for 1999-00, 2000-01 and 2001-02. Melbourne was the only major airport to record increased traffic levels over the previous year.

Airline Operations

- During 2001-02, 50 international scheduled airlines operated services to/from Australia of which 9 were dedicated freight only operators (airlines operating only via code share arrangements have been excluded). This compares to 54 international scheduled airlines and 8 dedicated freight only operators in 2000-01.

- Total flights operated have increased from 86.8 thousand in 1999-00 to 93.8 thousand in 2000-01 and then decreased to 87.3 thousand in 2001-02.
- Total seats made available have increased from 22.9 million in 1999-00 to 24.6 million in 2000-01 and then decreased back down to 22.9 million in 2001-02.
- Overall seat utilisation percentage (load factor) was 69.3% in 1999-00, 71.1% in 2000-01 and 73.8% in 2001-02. Capacity in 2001-02 declined by 6.9% compared to the previous year while passenger traffic declined by 4.0% - therefore, the load factor has increased for 2001-02 compared to 2000-01.
- The Boeing 747 (including Combi) was the most popular aircraft type operated to and from Australia, accounting for 32.3% of total aircraft movements in 2001-02. The next most popular type was the Boeing 767 with 25.0%, followed by the Boeing 737 with 16.2% and the Boeing 777 with 10.5%. All Airbus types accounted for a total of 9.9% and the McDonnell Douglas MD11 accounted for 2.0%.

Freight

- The average annual growth for total freight was 5.3% over the last ten years (inbound 4.9% and outbound 5.6%).
- Asian Express Airlines, Cargolux Airlines International, Evergreen International Airlines (on behalf of Qantas Airways), Federal Express Corporation, Gemini Air Cargo (on behalf of Qantas Airways), Lufthansa German Airlines, Martinair Holland, Polar Air Cargo and United Parcel Service operated dedicated freighter services to/from Australia during 2001-02.
- As well as the above freight only operators, Cathay Pacific, Korean Air, Malaysia Airlines and Singapore Airlines operated dedicated freighter services in addition to their regular passenger services.
- Freight carried on dedicated freight aircraft accounted for 26.9% of inbound freight to Australia, 13.3% of outbound freight from Australia and 19.5% of total freight. Note that some freighters operate as charters out of Australia or do not pick up freight in Australia – this accounts for the difference in inbound and outbound percentages.
- Dedicated freighters accounted for 3.2% of the total flights to and from Australia.
- The Boeing 747 freighter was the most popular of the dedicated freighter aircraft types, accounting for 1.5% of total aircraft movements in 2001-02. This was followed by McDonnell Douglas MD11 freighters with 1.0% and Boeing 727 freighters with 0.4%. There were also some Boeing 767 freighters.
- Qantas Airways had the largest share of freight carried to and from Australia in 2001-02 with 23.6% of the total, followed by Singapore Airlines with 15.4% and Cathay Pacific Airways with 7.8%.
- Table II shows total freight carried by uplift/discharge city pairs for 1999-00, 2000-01 and 2001-02.

Please refer to Explanatory Notes.

**CHART I: TOTAL INTERNATIONAL PASSENGERS CARRIED
YEARS ENDED JUNE 1992 TO 2002**

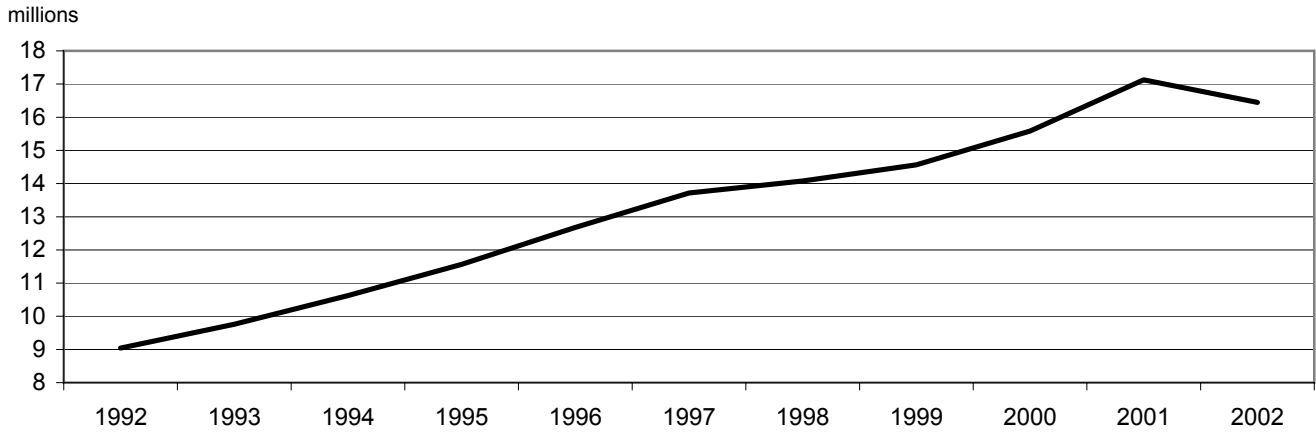
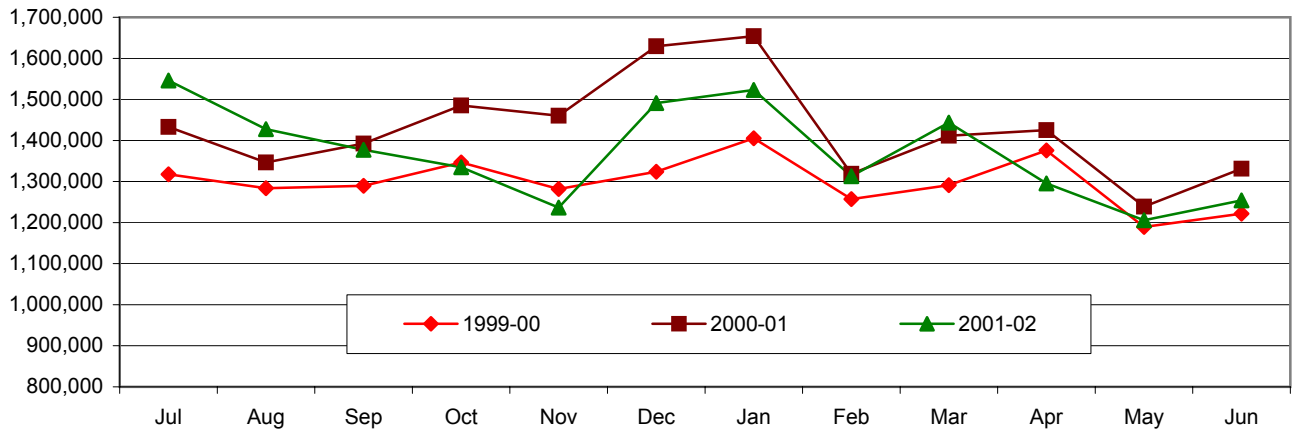
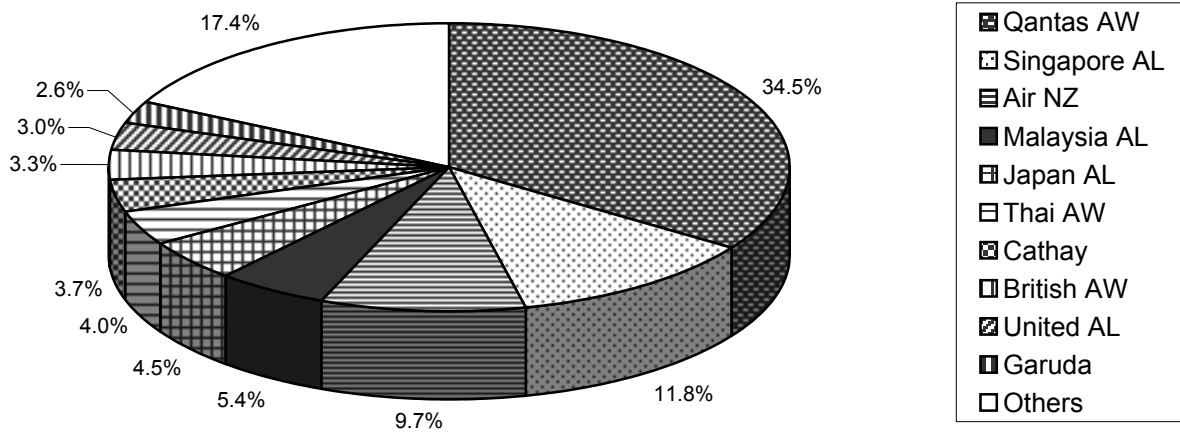


CHART II: TOTAL INTERNATIONAL PASSENGERS CARRIED BY MONTH



**CHART III: INTERNATIONAL PASSENGERS BY MAJOR AIRLINES
YEAR ENDED JUNE 2002**



Please refer to explanatory notes.

**TABLE I: INTERNATIONAL PASSENGERS BY UPLIFT/DISCHARGE CITY PAIRS
YEARS ENDED JUNE 2000, 2001 AND 2002**

Foreign Port	Australian Port	Year ended June 2000	Year ended June 2001	Year ended June 2002	% of Total	% Change 2002 over 2001
Auckland	Sydney	855,204	1,009,428	967,826	5.9	-4.1
Singapore	Sydney	759,643	927,436	962,728	5.9	3.8
Singapore	Perth	575,188	652,244	686,899	4.2	5.3
Los Angeles	Sydney	752,703	824,361	679,156	4.1	-17.6
Singapore	Melbourne	543,505	619,443	663,635	4.0	7.1
Hong Kong	Sydney	619,026	670,055	562,472	3.4	-16.1
Auckland	Melbourne	416,054	491,602	518,694	3.2	5.5
Bangkok	Sydney	412,914	436,802	448,619	2.7	2.7
Auckland	Brisbane	430,148	497,610	444,101	2.7	-10.8
Singapore	Brisbane	312,728	369,577	423,964	2.6	14.7
Top 10 City Pairs		5,677,113	6,498,558	6,358,094	38.7	-2.2
Other City Pairs		9,906,581	10,627,946	10,090,884	61.3	-5.1
ALL CITY PAIRS		15,583,694	17,126,504	16,448,978	100.0	-4.0

**TABLE II: INTERNATIONAL FREIGHT (TONNES) BY UPLIFT/DISCHARGE CITY PAIRS
YEARS ENDED JUNE 2000, 2001 AND 2002**

Foreign Port	Australian Port	Year ended June 2000	Year ended June 2001	Year ended June 2002	% of Total	% Change 2002 over 2001
Singapore	Sydney	44,380	47,268	51,168	8.1	8.3
Singapore	Melbourne	53,119	47,767	48,731	7.7	2.0
Auckland	Sydney	53,960	50,134	48,588	7.6	-3.1
Auckland	Melbourne	33,400	29,035	31,965	5.0	10.1
Hong Kong	Sydney	32,593	33,425	29,296	4.6	-12.4
Los Angeles	Sydney	35,682	29,621	27,824	4.4	-6.1
Singapore	Perth	27,460	29,773	27,225	4.3	-8.6
Hong Kong	Melbourne	25,277	25,729	23,082	3.6	-10.3
Seoul	Sydney	13,927	18,663	19,007	3.0	1.8
Singapore	Brisbane	17,912	18,361	17,816	2.8	-3.0
Top 10 City Pairs		337,712	329,776	324,702	51.1	-1.5
Other City Pairs		349,536	335,910	310,610	48.9	-7.5
ALL CITY PAIRS		687,247	665,685	635,311	100.0	-4.6

**TABLE III: INTERNATIONAL PASSENGERS BY UPLIFT/DISCHARGE COUNTRY
YEARS ENDED JUNE 2000, 2001 AND 2002**

Country	Year ended June 2000	Year ended June 2001	Year ended June 2002	% of Total	% Change 2002 over 2001
New Zealand	3,048,183	3,524,777	3,498,679	21.3	-0.7
Singapore	2,436,657	2,826,360	2,920,137	17.8	3.3
Japan	1,577,755	1,654,696	1,543,365	9.4	-6.7
USA	1,396,394	1,608,160	1,348,994	8.2	-16.1
Hong Kong	1,113,542	1,217,830	1,118,690	6.8	-8.1
Malaysia	977,450	996,677	908,781	5.5	-8.8
Thailand	718,917	804,305	828,550	5.0	3.0
Indonesia	735,667	857,385	736,630	4.5	-14.1
UK	683,511	631,390	627,038	3.8	-0.7
Korea	281,820	331,501	361,485	2.2	9.0
Top 10 Countries	12,969,896	14,453,081	13,892,349	84.5	-3.9
Other Countries	2,613,798	2,673,423	2,556,629	15.5	-4.4
ALL COUNTRIES	15,583,694	17,126,504	16,448,978	100.0	-4.0

Please refer to explanatory notes.

**TABLE IV: INTERNATIONAL PASSENGER TRAFFIC
THROUGH AUSTRALIAN INTERNATIONAL AIRPORTS
YEARS ENDED JUNE 2000, 2001 AND 2002**

Airport	Year ended June 2000	Year ended June 2001	Year ended June 2002	% of Total	% Change 2002 over 2001
Sydney	7,702,697	8,537,832	7,958,565	48.4	-6.8
Melbourne	2,832,996	3,252,430	3,296,555	20.0	1.4
Brisbane	2,430,019	2,538,692	2,457,064	14.9	-3.2
Perth	1,516,842	1,607,385	1,596,246	9.7	-0.7
Cairns	655,921	701,025	690,595	4.2	-1.5
Adelaide	253,900	263,863	229,637	1.4	-13.0
Darwin	153,070	172,290	127,703	0.8	-25.9
Coolangatta	21,256	33,799	66,833	0.4	97.7
Norfolk Island	14,874	14,933	16,611	0.1	11.2
Newcastle (a)	8,485	0.1	..
Townsville (b)	411	0.0	..
Broome (c)	692	4,255	273	0.0	-93.6
Port Hedland (d)	1,427
ALL AIRPORTS	15,583,694	17,126,504	16,448,978	100.0	-4.0

(a) International operations commenced December 2001.

(b) International operations recommenced October 2001 and ceased again in March 2002.

(c) International operations recommenced April 2000 and ceased July 2001.

(d) International operations ceased January 2000.

Please refer to explanatory notes.

YEAR ENDED JUNE 2002 - SUMMARY

Number of international scheduled airlines that operated services to/from Australia during 2001-02:
(includes dedicated freight airlines but excludes airlines operating only via code share arrangements)

50

Traffic carried:

	Inbound	Outbound	Total
Passengers Carried (millions)	8.3	8.2	16.4
Available Seats (millions)	11.4	11.4	22.9
Freight (tonnes, thousands)	289.1	346.2	635.3
Mail (tonnes, thousands)	14.3	14.5	28.8
Aircraft Movements (thousands)	52.7	52.5	105.2

Growth in Passenger traffic:

Compared to 2000-01
Compared to 1999-00

-4.0%

5.6%

Growth in Freight traffic:

Compared to 2000-01
Compared to 1999-00

-4.6%

-7.6%

Top five airlines:

Passengers

Qantas Airways
Singapore Airlines
Air New Zealand
Malaysia Airlines
Japan Airlines

% of
Total

34.5%
11.8%
9.7%
5.4%
4.5%

Freight

Qantas Airways
Singapore Airlines
Cathay Pacific Airways
Air New Zealand
Malaysia Airlines

% of
Total

23.6%
15.4%
7.8%
7.2%
5.4%

Top five city pairs:

Passengers

Sydney Auckland
Sydney Singapore
Perth Singapore
Sydney Los Angeles
Melbourne Singapore

% of
Total

5.9%
5.9%
4.2%
4.1%
4.0%

Freight

Sydney Singapore
Melbourne Singapore
Sydney Auckland
Melbourne Auckland
Sydney Hong Kong

% of
Total

8.1%
7.7%
7.6%
5.0%
4.6%

Major International Airports:

Passengers

Sydney
Melbourne
Brisbane
Perth

% of
Total

48.4%
20.0%
14.9%
9.7%

Freight

Sydney
Melbourne
Brisbane
Perth

% of
Total

48.7%
28.3%
11.6%
8.0%

Please refer to explanatory notes.

TABLE 1: SCHEDULED INTERNATIONAL AIR TRAFFIC TO AND FROM AUSTRALIA: Year ended June 2002

Scheduled Operator	Country to/from	Inbound			Outbound		
		Passengers	Freight (tonnes)	Mail (tonnes)	Passengers	Freight (tonnes)	Mail (tonnes)
Aerolineas Argentinas (a)	Argentina	3,744	6.6	3.9	3,824	7.3	-
"	New Zealand	5,406	525.1	-	6,111	237.1	-
"	ALL SERVICES	9,150	531.7	3.9	9,935	244.4	-
Air Caledonie	New Caledonia	36,223	30.8	6.0	37,385	443.8	17.3
Air Canada	Canada	39,415	986.3	124.2	41,704	2,602.5	0.4
"	USA	31,257	1,465.0	147.7	31,128	1,540.7	5.4
"	ALL SERVICES	70,672	2,451.4	271.9	72,832	4,143.3	5.8
Air China	China	62,249	499.4	37.8	53,682	741.1	-
Air Mauritius	Mauritius	13,822	380.1	0.7	13,324	630.3	0.0
Air Nauru	Nauru	5,880	11.1	0.9	5,593	223.5	10.3
Air New Zealand	New Zealand	740,998	21,189.9	1,361.6	744,213	20,986.5	55.4
"	USA	59,569	1,281.9	124.8	58,407	2,408.4	-
"	ALL SERVICES	800,567	22,471.8	1,486.4	802,620	23,394.9	55.4
Air Niugini	Papua New Guinea	54,948	1,569.0	40.9	54,543	1,972.5	108.6
Air Pacific	Fiji	154,981	3,996.0	39.6	155,432	3,695.1	137.3
Air Vanuatu	Vanuatu	30,420	134.3	25.4	30,095	355.6	45.9
Ansett International (b)	Fiji	2,912	85.0	-	2,827	73.0	-
"	Hong Kong	20,655	1,105.0	33.0	20,034	787.0	2.0
"	Indonesia	11,092	107.0	-	12,226	21.0	-
"	Japan	25,576	524.0	4.0	24,789	870.0	1.0
"	ALL SERVICES	60,235	1,821.0	37.0	59,876	1,751.0	3.0
Asian Express Airlines	New Zealand	..	3,697.5	-	..	4,109.7	-
Asiana Airlines	Korea	67,872	2,035.4	136.5	65,323	3,059.7	-
British Airways	Singapore	80,865	1,788.5	5.3	59,556	8,088.6	10.6
"	Thailand	66,872	1,027.8	0.7	66,130	799.6	28.5
"	UK	137,456	4,852.3	384.7	136,245	1,890.2	374.0
"	ALL SERVICES	285,193	7,668.6	390.7	261,931	10,778.5	413.1
Cargolux Airlines Intl	Luxembourg	..	4,337.7	-
"	Malaysia	..	660.9	-
"	New Zealand	5,674.1	-
"	Thailand	..	65.5	-
"	ALL SERVICES	-	5,064.1	-	-	5,674.1	-
Cathay Pacific Airways	Hong Kong	314,477	19,356.8	119.5	300,094	29,985.3	137.3
China Airlines	New Zealand	6,067	206.2	-	6,908	456.3	34.3
"	Taiwan	30,149	788.6	114.5	29,678	1,569.0	-
"	ALL SERVICES	36,216	994.8	114.5	36,586	2,025.3	34.3
China Eastern Airlines	China	32,349	1,423.5	2.3	29,815	643.5	0.9
China Southern Airlines	China	36,887	1,673.8	17.6	34,716	316.4	-
Continental Micronesia	Guam	10,675	0.3	-	10,720	39.1	-
EgyptAir	Egypt	14,203	336.1	67.8	14,646	364.4	-
"	Singapore	4,753	443.2	68.7	4,453	494.1	-
"	ALL SERVICES	18,956	779.3	136.5	19,099	858.4	-
Emirates	Singapore	26,823	1,868.1	42.9	25,386	4,903.0	21.2
"	United Arab Emirates	99,983	3,549.3	50.6	104,339	6,125.0	21.2
"	ALL SERVICES	126,806	5,417.4	93.5	129,725	11,028.0	42.3
Eva Air	Taiwan	33,870	1,345.4	38.7	32,995	1,697.9	-
Evergreen Intl Airlines (c) (d)	American Samoa	..	0.3	-
"	Fiji	..	12.3	-
"	USA	..	3,266.8	73.7
"	ALL SERVICES	-	3,279.4	73.7	-	-	-
Federal Express Corporation	Philippines	9,961.1	-
"	USA	..	12,669.4	144.2
"	ALL SERVICES	-	12,669.4	144.2	-	9,961.1	-
Freedom Air International	New Zealand	148,175	-	-	146,219	-	-
Garuda Indonesia	Indonesia	194,644	4,691.9	2.4	197,803	5,606.7	0.1
"	New Zealand	16,187	928.1	-	15,984	366.5	-
"	ALL SERVICES	210,831	5,620.0	2.4	213,787	5,973.1	0.1
Gemini Air Cargo (c) (e)	USA	..	886.3	22.9	..	387.8	2.2
Gulf Air (f)	Bahrain	21,831	628.7	25.2	19,244	1,818.3	-
"	Singapore	8,306	533.0	21.7	8,124	470.9	0.0
"	ALL SERVICES	30,137	1,161.7	46.9	27,368	2,289.3	0.0
Japan Airlines	Japan	366,612	4,803.6	1,008.0	371,198	15,212.1	38.0
Korean Air	Korea	115,293	6,596.3	481.5	112,997	9,309.6	7.1
Lauda Air (g)	Austria	58,027	-	-	66,081	-	-
"	Malaysia	8,102	-	-	8,239	-	-
"	ALL SERVICES	66,129	-	-	74,320	-	-
Lufthansa German Airlines	Germany	..	326.1	-	..	1,053.9	7.6

TABLE 1: SCHEDULED INTERNATIONAL AIR TRAFFIC TO AND FROM AUSTRALIA: Year ended June 2002

Scheduled Operator	Country to/from	Inbound			Outbound		
		Passengers	Freight (tonnes)	Mail (tonnes)	Passengers	Freight (tonnes)	Mail (tonnes)
Lufthansa German Airlines	India	12.5	-
"	Malaysia	1,679.6	-
"	New Zealand	..	2,778.1	1.0
"	Pakistan	26.5	-
"	United Arab Emirates	3.0	-
"	USA	..	4,655.5	1.5
"	ALL SERVICES	-	7,759.7	2.5	-	2,775.4	7.6
Malaysia Airlines	Malaysia	449,458	16,526.3	44.8	442,982	17,475.4	-
Martinair Holland	Netherlands	..	10,554.6	-	..	2,072.6	-
Merpati Nusantara Airlines (h)	Indonesia	..	-	-	..	-	-
Olympic Airways	Greece	24,984	281.3	264.7	24,625	146.1	2.0
"	Thailand	2,872	195.5	-	2,962	3.1	-
"	ALL SERVICES	27,856	476.7	264.7	27,587	149.2	2.0
Philippine Airlines	Philippines	30,170	767.2	4.0	29,158	1,158.3	-
Polar Air Cargo	USA	..	6,424.8	-
Polynesian Airlines	New Zealand	7,329	1.9	0.1	7,032	51.0	7.7
"	Tahiti	334	-	-	3,468	10.7	55.8
"	Tonga	1,979	66.0	0.5	1,664	15.9	4.0
"	Western Samoa	4,163	57.7	1.5	3,905	17.9	4.6
"	ALL SERVICES	13,805	125.7	2.0	16,069	95.6	72.1
Qantas Airways	Argentina	24,585	171.0	1.0	25,703	297.9	23.0
"	France	28,427	688.7	218.1	32,238	113.4	87.0
"	Germany	61,042	3,414.3	570.2	68,657	1,023.8	1,113.1
"	Hong Kong	234,234	6,965.2	225.9	229,196	10,964.2	719.6
"	India	13,768	182.9	18.6	11,270	74.7	103.4
"	Indonesia	161,175	940.5	37.8	159,690	1,660.6	65.5
"	Italy	43,358	1,363.1	27.3	40,593	86.1	90.9
"	Japan	378,878	5,688.0	417.7	376,312	10,336.9	1,781.9
"	New Caledonia	22,093	6.3	3.1	21,562	179.5	33.0
"	New Zealand	712,671	19,481.9	492.0	745,685	20,726.4	2,314.4
"	Papua New Guinea	17,174	122.5	6.3	16,930	757.1	160.8
"	Philippines	35,928	775.1	19.8	35,738	939.0	51.5
"	Singapore	387,609	10,465.9	218.9	365,153	28,471.9	1,337.7
"	South Africa	62,620	1,196.1	27.8	58,360	382.1	115.8
"	Taiwan	23,531	805.1	-	22,153	403.1	55.4
"	Thailand	86,619	1,404.0	25.7	77,810	1,795.5	256.8
"	UK	172,482	4,495.0	2,765.0	180,855	750.5	2,396.5
"	USA	365,651	7,171.6	962.6	373,249	5,810.1	2,419.6
"	ALL SERVICES	2,831,845	65,337.1	6,037.8	2,841,154	84,772.7	13,125.7
Royal Brunei Airlines	Brunei	51,249	598.2	0.6	54,228	2,651.5	-
Singapore Airlines	New Zealand	..	46.0	-	..	2,217.3	-
"	Singapore	978,733	40,931.1	1,215.7	970,376	54,564.1	122.9
"	ALL SERVICES	978,733	40,977.1	1,215.7	970,376	56,781.4	122.9
Solomon Airlines (i)	Solomon Islands	..	-	-	..	-	-
South African Airways	South Africa	49,099	870.9	12.9	40,536	2,007.0	15.6
SriLankan Airlines (j)	Sri Lanka	2,044	95.5	0.5	1,724	42.1	-
Thai Airways International	New Zealand	65,462	2,633.1	1.6	59,611	3,720.5	-
"	Thailand	265,644	8,778.2	744.7	259,641	11,080.0	6.7
"	ALL SERVICES	331,106	11,411.2	746.3	319,252	14,800.5	6.7
United Airlines	New Zealand	31,419	1,093.8	8.2	33,202	1,567.3	2.5
"	USA	214,925	2,341.0	1,169.9	214,808	8,409.3	114.1
"	ALL SERVICES	246,344	3,434.8	1,178.1	248,010	9,976.6	116.6
United Parcel Service	USA	..	4,480.4	-
Vietnam Airlines	Vietnam	42,741	895.7	25.5	41,617	502.9	-
TOTAL		8,254,075	289,105.9	14,315.0	8,194,903	346,205.6	14,528.4

TABLE 1: SCHEDULED INTERNATIONAL AIR TRAFFIC TO AND FROM AUSTRALIA: Year ended June 2002

Scheduled Operator	Country to/from	Inbound			Outbound		
		Passengers	Freight (tonnes)	Mail (tonnes)	Passengers	Freight (tonnes)	Mail (tonnes)

Please refer to explanatory notes.

- (a) Nil Operations for July 2001 to November 2001.
- (b) Service ceased September 2001.
- (c) Traffic carried on behalf of Qantas Airways.
- (d) Service ceased December 2001.
- (e) Service commenced March 2002.
- (f) Service ceased March 2002.
- (g) No outbound freight data for September 2000 onwards. No inbound freight data for April 2001 onwards.
- (h) Nil operations for May and July 2001. No data for August 2001 onwards.
- (i) Latest data received is for June 2001.
- (j) Service ceased July 2001.

TABLE 2: SCHEDULED OPERATOR MARKET SHARES AND GROWTH: Year ended June

Scheduled Operators	Country to/from	Total Passengers				Total Freight (tonnes)				Total Mail (tonnes)			
		2001	2002	(%) of TOTAL	(%) Change	2001	2002	(%) of TOTAL	(%) Change	2001	2002	(%) of TOTAL	(%) Change
Aerolineas Argentinas (a)	Argentina	25,813	7,568	0.0	-70.7	779.6	13.8	0.0	-98.2	10.7	3.9	0.0	-64.1
"	New Zealand	8,949	11,517	0.1	28.7	942.8	762.2	0.1	-19.2	0.4	-	-	-100.0
"	ALL SERVICES	34,762	19,085	0.1	-45.1	1,722.5	776.1	0.1	-54.9	11.2	3.9	0.0	-65.5
Air Caledonie	New Caledonia	71,561	73,608	0.4	2.9	417.9	474.6	0.1	13.6	34.6	23.3	0.1	-32.6
Air Canada (b)	Canada	25,316	81,119	0.5	220.4	821.5	3,588.8	0.6	336.9	9.8	124.6	0.4	1177.0
"	USA	24,672	62,385	0.4	152.9	1,109.8	3,005.8	0.5	170.8	74.3	153.1	0.5	106.2
"	ALL SERVICES	49,988	143,504	0.9	187.1	1,931.3	6,594.6	1.0	241.5	84.0	277.7	1.0	230.5
Air China	China	97,351	115,931	0.7	19.1	2,078.1	1,240.5	0.2	-40.3	46.5	37.8	0.1	-18.7
"	New Zealand	12,970	-100.0	335.7	-100.0	0.1	-100.0
"	ALL SERVICES	110,321	115,931	0.7	5.1	2,413.9	1,240.5	0.2	-48.6	46.7	37.8	0.1	-19.0
Air Mauritius	Mauritius	28,829	27,146	0.2	-5.8	970.7	1,010.4	0.2	4.1	1.0	0.7	0.0	-28.9
Air Nauru	Nauru	13,645	11,473	0.1	-15.9	230.9	234.6	0.0	1.6	11.5	11.2	0.0	-3.3
Air New Zealand	Fiji	192	-100.0	9.6	-100.0	-
"	New Zealand	1,675,192	1,485,211	9.0	-11.3	48,722.0	42,176.4	6.6	-13.4	1,375.4	1,417.0	4.9	3.0
"	USA	194,617	117,976	0.7	-39.4	5,418.3	3,690.3	0.6	-31.9	156.2	124.8	0.4	-20.1
"	ALL SERVICES	1,870,001	1,603,187	9.7	-14.3	54,149.9	45,866.7	7.2	-15.3	1,531.6	1,541.8	5.3	0.7
Air Niugini	Papua New Guinea	98,067	109,491	0.7	11.6	2,767.0	3,541.5	0.6	28.0	35.4	149.5	0.5	322.7
Air Pacific	Fiji	187,167	310,413	1.9	65.8	6,202.0	7,691.1	1.2	24.0	165.9	177.0	0.6	6.7
Air Vanuatu	Vanuatu	69,992	60,515	0.4	-13.5	547.8	489.9	0.1	-10.6	70.2	71.3	0.2	1.6
Alitalia (c)	Italy	-	-
"	Singapore	-	-
"	ALL SERVICES	-	-	-	..	-	-	-	..	-	-	-	..
Ansett International (d)	Fiji	18,494	5,739	0.0	-69.0	508.7	158.0	0.0	-68.9	2.3	-	-	-100.0
"	Hong Kong	191,596	40,689	0.2	-78.8	9,121.0	1,892.0	0.3	-79.3	120.0	35.0	0.1	-70.8
"	Indonesia	111,799	23,318	0.1	-79.1	538.3	128.0	0.0	-76.2	0.1	-	-	-100.0
"	Japan	225,741	50,365	0.3	-77.7	6,475.0	1,394.0	0.2	-78.5	125.5	5.0	0.0	-96.0
"	ALL SERVICES	547,630	120,111	0.7	-78.1	16,642.9	3,572.0	0.6	-78.5	248.0	40.0	0.1	-83.9
AOM French Airlines (e)	France	-	-
"	New Caledonia	-	-
"	Sri Lanka	-	-
"	ALL SERVICES	-	-	-	..	-	-	-	..	-	-	-	..
Asian Express Airlines	New Zealand	7,577.5	7,807.3	1.2	3.0	-	-	-	..
Asiana Airlines	Korea	117,521	133,195	0.8	13.3	3,689.2	5,095.0	0.8	38.1	128.3	136.5	0.5	6.3
British Airways	Singapore	112,558	140,421	0.9	24.8	6,693.3	9,877.1	1.6	47.6	66.4	15.9	0.1	-76.1
"	Thailand	127,088	133,002	0.8	4.7	1,420.0	1,827.5	0.3	28.7	49.5	29.2	0.1	-41.1
"	UK	222,206	273,701	1.7	23.2	4,953.8	6,742.5	1.1	36.1	915.9	758.7	2.6	-17.2
"	ALL SERVICES	461,852	547,124	3.3	18.5	13,067.1	18,447.1	2.9	41.2	1,031.8	803.8	2.8	-22.1
Canadian Airlines Intl (b)	Canada	25,291	-100.0	1,100.1	-100.0	65.3	-100.0
"	USA	29,344	-100.0	1,003.7	-100.0	56.4	-100.0
"	ALL SERVICES	54,635	-	-	-100.0	2,103.8	-	-	-100.0	121.6	-	-	-100.0
Cargolux Airlines Intl	Luxembourg	-	4,801.5	4,337.7	0.7	-9.7	-	-	-	..
"	Malaysia	660.9	0.1	..	-	-	-	..
"	New Zealand	-	6,148.6	5,674.1	0.9	-7.7	-	-	-	..
"	Thailand	-	669.5	65.5	0.0	-90.2	-	-	-	..

TABLE 2: SCHEDULED OPERATOR MARKET SHARES AND GROWTH: Year ended June

Scheduled Operators	Country to/from	Total Passengers				Total Freight (tonnes)				Total Mail (tonnes)			
		2001	2002	(%) of TOTAL	(%) Change	2001	2002	(%) of TOTAL	(%) Change	2001	2002	(%) of TOTAL	(%) Change
Cargolux Airlines Intl	ALL SERVICES	-	-	-	..	11,619.6	10,738.2	1.7	-7.6	-	-	-	..
Cathay Pacific Airways	Hong Kong	620,982	614,571	3.7	-1.0	49,475.0	49,342.1	7.8	-0.3	339.5	256.8	0.9	-24.4
China Airlines	New Zealand	38,344	12,975	0.1	-66.2	3,139.5	662.6	0.1	-78.9	4.8	34.3	0.1	619.7
"	Taiwan	52,960	59,827	0.4	13.0	3,122.5	2,357.6	0.4	-24.5	98.8	114.5	0.4	15.9
"	ALL SERVICES	91,304	72,802	0.4	-20.3	6,262.0	3,020.1	0.5	-51.8	103.5	148.8	0.5	43.7
China Eastern Airlines	China	61,172	62,164	0.4	1.6	1,786.9	2,067.0	0.3	15.7	15.6	3.2	0.0	-79.8
China Southern Airlines (f)	China	29,370	71,603	0.4	143.8	923.3	1,990.1	0.3	115.5	2.2	17.6	0.1	682.3
Continental Micronesia	Guam	21,576	21,395	0.1	-0.8	30.9	39.4	0.0	27.7	-	-	-	..
EgyptAir	Egypt	31,155	28,849	0.2	-7.4	665.8	700.4	0.1	5.2	116.3	67.8	0.2	-41.7
"	Singapore	5,987	9,206	0.1	53.8	635.3	937.3	0.1	47.5	56.4	68.7	0.2	21.9
"	ALL SERVICES	37,142	38,055	0.2	2.5	1,301.1	1,637.8	0.3	25.9	172.7	136.5	0.5	-21.0
Emirates	Singapore	49,713	52,209	0.3	5.0	6,315.2	6,771.1	1.1	7.2	-	64.1	0.2	..
"	United Arab Emirates	194,509	204,322	1.2	5.0	8,636.9	9,674.3	1.5	12.0	56.5	71.7	0.2	26.9
"	ALL SERVICES	244,222	256,531	1.6	5.0	14,952.0	16,445.4	2.6	10.0	56.5	135.8	0.5	140.3
Eva Air	Taiwan	85,391	66,865	0.4	-21.7	3,550.2	3,043.3	0.5	-14.3	15.2	38.7	0.1	154.9
Evergreen Intl Airlines (g) (h)	American Samoa	0.3	0.0	-	-	..
"	Fiji	125.0	12.3	0.0	-90.1	-	-	-	..
"	Indonesia	0.1	-100.0	-
"	New Zealand	1,076.3	-100.0	13.4	-100.0
"	Singapore	1.0	-100.0	-
"	UK	-	0.5	-100.0
"	USA	13,498.4	3,266.8	0.5	-75.8	94.8	73.7	0.3	-22.2
"	ALL SERVICES	..	-	-	..	14,700.8	3,279.4	0.5	-77.7	108.8	73.7	0.3	-32.2
Federal Express Corporation	Philippines	9,506.4	9,961.1	1.6	4.8	-	-	-	..
"	USA	13,685.7	12,669.4	2.0	-7.4	219.7	144.2	0.5	-34.4
"	ALL SERVICES	-	-	-	..	23,192.1	22,630.6	3.6	-2.4	219.7	144.2	0.5	-34.4
Freedom Air International	New Zealand	233,906	294,394	1.8	25.9	-	-	-	..	-	-	-	..
Garuda Indonesia	Indonesia	405,795	392,447	2.4	-3.3	9,486.5	10,298.6	1.6	8.6	0.8	2.4	0.0	217.3
"	New Zealand	28,811	32,171	0.2	11.7	416.1	1,294.5	0.2	211.1	-	-	-	..
"	ALL SERVICES	434,606	424,618	2.6	-2.3	9,902.6	11,593.1	1.8	17.1	0.8	2.4	0.0	217.3
Gemini Air Cargo (g) (i)	USA	1,274.1	0.2	25.1	0.1	..
Gulf Air (j)	Bahrain	78,194	41,075	0.2	-47.5	4,410.8	2,447.1	0.4	-44.5	29.2	25.2	0.1	-13.8
"	Singapore	19,534	16,430	0.1	-15.9	1,193.2	1,004.0	0.2	-15.9	0.9	21.8	0.1	2192.0
"	United Arab Emirates	22,325	-100.0	1,269.3	-100.0	0.1	-100.0
"	ALL SERVICES	120,053	57,505	0.3	-52.1	6,873.3	3,451.0	0.5	-49.8	30.2	46.9	0.2	55.1
Japan Airlines	Japan	730,371	737,810	4.5	1.0	21,263.3	20,015.6	3.2	-5.9	813.2	1,046.0	3.6	28.6
KLM Royal Dutch Airlines (k)	Netherlands	66,797	-100.0	3,063.4	-100.0	264.9	-100.0
"	Singapore	2,751	-100.0	-	-
"	ALL SERVICES	69,548	-	-	-100.0	3,063.4	-	-	-100.0	264.9	-	-	-100.0
Korean Air	Korea	213,980	228,290	1.4	6.7	17,245.3	15,905.9	2.5	-7.8	160.1	488.6	1.7	205.1
Lauda Air (l)	Austria	114,718	124,108	0.8	8.2	1,207.6	-	-	-100.0	-	-	-	..
"	Malaysia	9,687	16,341	0.1	68.7	158.4	-	-	-100.0	-	-	-	..
"	ALL SERVICES	124,405	140,449	0.9	12.9	1,366.0	-	-	-100.0	-	-	-	..
Lufthansa German Airlines (m)	Germany	228.0	1,380.0	0.2	505.2	-	7.6	0.0	..

TABLE 2: SCHEDULED OPERATOR MARKET SHARES AND GROWTH: Year ended June

Scheduled Operators	Country to/from	Total Passengers				Total Freight (tonnes)				Total Mail (tonnes)			
		2001	2002	(%) of TOTAL	(%) Change	2001	2002	(%) of TOTAL	(%) Change	2001	2002	(%) of TOTAL	(%) Change
Lufthansa German Airlines	India	12.5	0.0	-	-	..
"	Malaysia	112.3	1,679.6	0.3	1395.1	-	-	-	..
"	New Zealand	832.3	2,778.1	0.4	233.8	-	1.0	0.0	..
"	Pakistan	3.0	26.5	0.0	776.2	-	-	-	..
"	Tahiti	3.8	-100.0	-
"	United Arab Emirates	3.0	0.0	-	-	..
"	USA	889.3	4,655.5	0.7	423.5	0.6	1.5	0.0	138.9
"	ALL SERVICES	-	-	-	..	2,068.8	10,535.1	1.7	409.2	0.6	10.1	0.0	1516.3
Malaysia Airlines	Malaysia	986,990	892,440	5.4	-9.6	35,335.9	34,001.7	5.4	-3.8	57.6	44.8	0.2	-22.2
"	New Zealand	25.9	-100.0	-
"	ALL SERVICES	986,990	892,440	5.4	-9.6	35,361.8	34,001.7	5.4	-3.8	57.6	44.8	0.2	-22.2
Martinair Holland	Netherlands	8,389.8	12,627.2	2.0	50.5	-	-	-	..
"	United Arab Emirates	27.0	-100.0	-
"	ALL SERVICES	-	-	-	..	8,416.8	12,627.2	2.0	50.0	-	-	-	..
Merpati Nusantara Airlines (n)	East Timor	146	-100.0	-	-
"	Indonesia	2,778	-100.0	7.4	-	-	-100.0	-	-	-	..
"	ALL SERVICES	2,924	-	-	-100.0	7.4	-	-	-100.0	-	-	-	..
Olympic Airways	Greece	60,354	49,609	0.3	-17.8	504.1	427.4	0.1	-15.2	353.9	266.7	0.9	-24.7
"	Thailand	9,188	5,834	0.0	-36.5	319.5	198.5	0.0	-37.9	-	-	-	..
"	ALL SERVICES	69,542	55,443	0.3	-20.3	823.6	625.9	0.1	-24.0	353.9	266.7	0.9	-24.7
Philippine Airlines	Philippines	49,968	59,328	0.4	18.7	1,781.8	1,925.6	0.3	8.1	-	4.0	0.0	..
Polar Air Cargo	USA	10,008.2	6,424.8	1.0	-35.8	-	-	-	..
Polynesian Airlines (o)	New Zealand	7,002	14,361	0.1	105.1	27.2	53.0	0.0	94.4	1.0	7.8	0.0	664.3
"	Tahiti	870	3,802	0.0	337.0	0.7	10.7	0.0	1337.2	0.1	55.8	0.2	>999.9
"	Tonga	4,003	3,643	0.0	-9.0	34.3	81.9	0.0	138.5	5.3	4.5	0.0	-15.4
"	Western Samoa	7,273	8,068	0.0	10.9	144.3	75.6	0.0	-47.6	4.9	6.1	0.0	22.5
"	ALL SERVICES	19,148	29,874	0.2	56.0	206.7	221.2	0.0	7.0	11.4	74.1	0.3	548.5
Qantas Airways	Argentina	42,257	50,288	0.3	19.0	485.4	468.9	0.1	-3.4	17.2	24.1	0.1	39.6
"	Canada	38,232	-100.0	739.0	-100.0	163.8	-100.0
"	China	45,855	-100.0	982.9	-100.0	3.7	-100.0
"	East Timor	10,111	-100.0	35.4	-100.0	8.5	-100.0
"	France	65,801	60,665	0.4	-7.8	1,491.5	802.1	0.1	-46.2	232.4	305.1	1.1	31.3
"	Germany	136,333	129,699	0.8	-4.9	5,914.5	4,438.1	0.7	-25.0	1,208.5	1,683.3	5.8	39.3
"	Hong Kong	405,252	463,430	2.8	14.4	15,678.7	17,929.4	2.8	14.4	743.4	945.5	3.3	27.2
"	India	33,908	25,038	0.2	-26.2	544.0	257.6	0.0	-52.6	195.6	122.0	0.4	-37.6
"	Indonesia	337,013	320,865	2.0	-4.8	2,888.3	2,601.2	0.4	-9.9	129.9	103.2	0.4	-20.6
"	Italy	80,342	83,951	0.5	4.5	1,784.4	1,449.2	0.2	-18.8	76.3	118.2	0.4	54.9
"	Japan	698,584	755,190	4.6	8.1	14,673.8	16,024.9	2.5	9.2	1,924.8	2,199.6	7.6	14.3
"	New Caledonia	34,251	43,655	0.3	27.5	108.3	185.7	0.0	71.5	20.4	36.2	0.1	76.9
"	New Zealand	1,407,117	1,458,356	8.9	3.6	36,965.2	40,208.3	6.3	8.8	2,819.8	2,806.4	9.7	-0.5
"	Papua New Guinea	56,474	34,104	0.2	-39.6	1,367.3	879.6	0.1	-35.7	290.5	167.1	0.6	-42.5
"	Philippines	90,161	71,666	0.4	-20.5	1,975.3	1,714.1	0.3	-13.2	85.8	71.3	0.2	-16.9
"	Singapore	829,467	752,762	4.6	-9.2	37,502.1	38,937.8	6.1	3.8	1,500.9	1,556.6	5.4	3.7
"	South Africa	103,826	120,980	0.7	16.5	2,060.7	1,578.2	0.2	-23.4	55.3	143.6	0.5	159.8

TABLE 2: SCHEDULED OPERATOR MARKET SHARES AND GROWTH: Year ended June

Scheduled Operators	Country to/from	Total Passengers				Total Freight (tonnes)				Total Mail (tonnes)			
		2001	2002	(%) of TOTAL	(%) Change	2001	2002	(%) of TOTAL	(%) Change	2001	2002	(%) of TOTAL	(%) Change
Qantas Airways	Tahiti	6,439	-100.0	124.5	-100.0	4.5	-100.0
"	Taiwan	58,898	45,684	0.3	-22.4	1,773.3	1,208.2	0.2	-31.9	48.4	55.4	0.2	14.3
"	Thailand	162,022	164,429	1.0	1.5	3,605.4	3,199.5	0.5	-11.3	317.8	282.5	1.0	-11.1
"	UK	409,184	353,337	2.1	-13.6	6,882.2	5,245.4	0.8	-23.8	5,002.5	5,161.5	17.9	3.2
"	USA	814,034	738,900	4.5	-9.2	15,017.3	12,981.7	2.0	-13.6	2,712.2	3,382.2	11.7	24.7
"	Zimbabwe	4,439	-100.0	113.5	-100.0	2.9	-100.0
"	ALL SERVICES	5,870,000	5,672,999	34.5	-3.4	152,712.8	150,109.8	23.6	-1.7	17,565.2	19,163.5	66.4	9.1
Royal Brunei Airlines	Brunei	95,629	105,477	0.6	10.3	2,625.2	3,249.7	0.5	23.8	0.4	0.6	0.0	48.8
Royal Tongan Airlines (p)	Tonga	2,788	-100.0	16.0	-100.0	-
Singapore Airlines	Malaysia	201.7	-100.0	-
"	New Zealand	2,354.3	2,263.3	0.4	-3.9	-	-	-	..
"	Singapore	1,806,350	1,949,109	11.8	7.9	100,174.1	95,495.2	15.0	-4.7	1,756.3	1,338.6	4.6	-23.8
"	ALL SERVICES	1,806,350	1,949,109	11.8	7.9	102,730.0	97,758.4	15.4	-4.8	1,756.3	1,338.6	4.6	-23.8
Solomon Airlines (q)	Solomon Islands	13,473	-100.0	275.3	-	-	-100.0	-	-	-	..
South African Airways	South Africa	88,858	89,635	0.5	0.9	3,070.0	2,877.9	0.5	-6.3	58.6	28.5	0.1	-51.4
SriLankan Airlines (r)	Sri Lanka	60,192	3,768	0.0	-93.7	2,574.9	137.5	0.0	-94.7	4.8	0.5	0.0	-89.0
Thai Airways International	New Zealand	100,936	125,073	0.8	23.9	6,693.9	6,353.6	1.0	-5.1	2.4	1.6	0.0	-33.6
"	Thailand	506,007	525,285	3.2	3.8	15,917.5	19,858.2	3.1	24.8	741.6	751.4	2.6	1.3
"	ALL SERVICES	606,943	650,358	4.0	7.2	22,611.4	26,211.7	4.1	15.9	744.0	753.0	2.6	1.2
United Airlines	American Samoa	290	-100.0	1.3	-100.0	0.8	-100.0
"	New Zealand	11,550	64,621	0.4	459.5	1,072.4	2,661.1	0.4	148.1	8.2	10.7	0.0	30.9
"	USA	545,493	429,733	2.6	-21.2	11,798.2	10,750.3	1.7	-8.9	2,745.7	1,284.0	4.5	-53.2
"	ALL SERVICES	557,333	494,354	3.0	-11.3	12,871.9	13,411.4	2.1	4.2	2,754.7	1,294.8	4.5	-53.0
United Parcel Service	USA	4,257.8	4,480.4	0.7	5.2	-	-	-	..
Vietnam Airlines (s)	Vietnam	62,367	84,358	0.5	35.3	1,322.6	1,398.6	0.2	5.8	22.3	25.5	0.1	14.3
TOTAL		17,126,504	16,448,978	100.0	-4.0	665,685.2	635,311.5	100.0	-4.6	29,154.7	28,843.3	100.0	-1.1

TABLE 2: SCHEDULED OPERATOR MARKET SHARES AND GROWTH: Year ended June

Scheduled Operators	Country to/from	Total Passengers			Total Freight (tonnes)			Total Mail (tonnes)		
		2001	2002	(%) of TOTAL Change	2001	2002	(%) of TOTAL Change	2001	2002	(%) of TOTAL Change

Please refer to explanatory notes.

- (a) Nil Operations for July 2001 to November 2001.
- (b) Air Canada took over Canadian Airlines International's operations from January 2001 onwards.
- (c) Service ceased October 2000. No data received for July 2000 to October 2000.
- (d) Service ceased September 2001.
- (e) Service ceased November 2000. No data received for June 2000 to November 2000.
- (f) Service recommenced December 2000.
- (g) Traffic carried on behalf of Qantas Airways.
- (h) Service ceased December 2001.
- (i) Service commenced March 2002.
- (j) Service ceased March 2002.
- (k) Service ceased March 2001.
- (l) No outbound freight data for September 2000 onwards. No inbound freight data for April 2001 onwards.
- (m) Service recommenced March 2001.
- (n) Nil operations for May and July 2001. No data for August 2001 onwards.
- (o) No data for November and December 2000.
- (p) Services in own right ceased in December 2000.
- (q) Latest data received is for June 2001.
- (r) Service ceased July 2001.
- (s) No inbound data for March 2000 to May 2000 and no inbound data for Sydney for June and July 2000.

TABLE 3: AIRLINE PASSENGER CAPACITY AND UTILISATION TO AND FROM AUSTRALIA BY OPERATOR: Year ended June 2002

Scheduled Operator	Service to/from	Inbound				Outbound			
		No. of Flights	Pax Carried	Seats Available	Seat Utilisation %	No. of Flights	Pax Carried	Seats Available	Seat Utilisation %
Aerolineas Argentinas (a)	Argentina	59	9,150	14,455	63.3	59	9,935	14,455	68.7
Air Caledonie	New Caledonia	352	36,223	50,938	71.1	353	37,385	51,064	73.2
Air Canada	Canada	441	70,672	101,611	69.6	443	72,832	101,878	71.5
Air China	China	261	62,249	83,150	74.9	261	53,682	83,150	64.6
Air Mauritius	Mauritius	77	13,822	19,940	69.3	76	13,324	19,646	67.8
Air Nauru	Nauru	93	5,880	10,820	54.3	94	5,593	10,930	51.2
Air New Zealand	New Zealand	5,844	740,998	983,858	75.3	5,841	744,213	984,262	75.6
"	USA	245	59,569	95,814	62.2	238	58,407	93,063	62.8
"	ALL SERVICES	6,089	800,567	1,079,672	74.1	6,079	802,620	1,077,325	74.5
Air Niugini	Papua New Guinea	890	54,948	103,500	53.1	889	54,543	103,283	52.8
Air Pacific	Fiji	863	154,981	210,418	73.7	863	155,432	210,418	73.9
Air Vanuatu	Vanuatu	413	30,420	52,050	58.4	412	30,095	51,916	58.0
Ansett International (b)	Fiji	21	2,912	3,694	78.8	21	2,827	3,694	76.5
"	Hong Kong	110	20,655	32,863	62.9	113	20,034	33,890	59.1
"	Indonesia	90	11,092	15,132	73.3	88	12,226	14,613	83.7
"	Japan	75	25,576	30,600	83.6	75	24,789	30,600	81.0
"	ALL SERVICES	296	60,235	82,289	73.2	297	59,876	82,797	72.3
Asian Express Airlines (c)	New Zealand	219	..	-	..	221	..	-	..
Asiana Airlines	Korea	368	67,872	100,768	67.4	368	65,323	100,768	64.8
British Airways	UK	1,094	285,193	396,990	71.8	1,093	261,931	396,599	66.0
Cargolux Airlines Intl (c)	Luxembourg	100	-	..	-	..
"	New Zealand	-	..	-	..	100
"	ALL SERVICES	100	-	-	..	100	-	-	..
Cathay Pacific Airways	Hong Kong	1,501	314,477	429,057	73.3	1,501	300,094	429,057	69.9
China Airlines	New Zealand	52	6,067	13,416	45.2	52	6,908	13,416	51.5
"	Taiwan	168	30,149	43,344	69.6	168	29,678	43,344	68.5
"	ALL SERVICES	220	36,216	56,760	63.8	220	36,586	56,760	64.5
China Eastern Airlines	China	155	32,349	44,485	72.7	155	29,815	44,485	67.0
China Southern Airlines	China	176	36,887	50,923	72.4	176	34,716	50,923	68.2
Continental Micronesia	Guam	103	10,675	15,808	67.5	103	10,720	15,808	67.8
EgyptAir	Egypt	104	18,956	27,040	70.1	104	19,099	27,040	70.6
Emirates	United Arab Emirates	574	126,806	185,703	68.3	574	129,725	185,703	69.9
Eva Air	Taiwan	175	33,870	46,800	72.4	175	32,995	46,800	70.5
Evergreen Intl Airlines (c) (d) (e)	USA	46	-	..	-	..
Federal Express Corporation (c)	Philippines	-	..	-	..	258
"	USA	258	-	..	-	..
"	ALL SERVICES	258	-	-	..	258	-	-	..
Freedom Air International	New Zealand	1,461	148,175	196,532	75.4	1,460	146,219	205,965	71.0
Garuda Indonesia	Indonesia	1,155	194,644	305,918	63.6	1,157	197,803	306,504	64.5
"	New Zealand	117	16,187	34,281	47.2	117	15,984	34,281	46.6
"	ALL SERVICES	1,272	210,831	340,199	62.0	1,274	213,787	340,785	62.7
Gemini Air Cargo (c) (d) (f)	USA	16	..	-	..	16	..	-	..

TABLE 3: AIRLINE PASSENGER CAPACITY AND UTILISATION TO AND FROM AUSTRALIA BY OPERATOR: Year ended June 2002

Scheduled Operator	Service to/from	Inbound				Outbound			
		No. of Flights	Pax Carried	Seats Available	Seat Utilisation %	No. of Flights	Pax Carried	Seats Available	Seat Utilisation %
Gulf Air (g)	Bahrain	134	30,137	39,262	76.8	134	27,368	39,262	69.7
Japan Airlines	Japan	1,103	366,612	463,476	79.1	1,103	371,198	462,910	80.2
Korean Air	Korea	490	115,293	151,358	76.2	490	112,997	151,309	74.7
Lauda Air	Austria	290	66,129	99,760	66.3	290	74,320	99,760	74.5
Lufthansa German Airlines (c)	Germany	143	..	-	..	142	..	-	..
Malaysia Airlines	Malaysia	2,039	449,458	625,405	71.9	2,041	442,982	626,101	70.8
Martinair Holland (c)	Netherlands	127	..	-	..	121	..	-	..
Merpati Nusantara Airlines (h)	Indonesia	-	..	-	..	-	..	-	..
Olympic Airways	Greece	122	27,856	35,990	77.4	122	27,587	35,990	76.7
Philippine Airlines	Philippines	158	30,170	46,776	64.5	158	29,158	46,776	62.3
Polar Air Cargo (c)	USA	100	..	-	..	-	..	-	..
Polynesian Airlines	Tahiti	17	1,303	2,618	49.8	98	10,500	15,092	69.6
"	Western Samoa	130	12,502	20,020	62.4	49	5,569	7,546	73.8
"	ALL SERVICES	147	13,805	22,638	61.0	147	16,069	22,638	71.0
Qantas Airways	Argentina	126	39,262	49,708	79.0	126	42,955	49,703	86.4
"	France	156	51,090	58,298	87.6	155	45,896	58,269	78.8
"	Germany	360	113,091	136,150	83.1	361	103,623	136,838	75.7
"	Hong Kong	1,366	303,711	373,764	81.3	1,366	290,612	373,474	77.8
"	India	239	38,822	65,394	59.4	240	51,413	66,228	77.6
"	Indonesia	885	175,242	222,672	78.7	883	172,934	222,513	77.7
"	Italy	183	62,149	73,192	84.9	182	55,841	72,752	76.8
"	Japan	1,504	389,597	535,923	72.7	1,506	384,827	535,732	71.8
"	New Caledonia	232	28,119	40,664	69.1	232	26,370	40,590	65.0
"	New Zealand	4,412	709,911	903,364	78.6	4,418	728,857	904,400	80.6
"	Papua New Guinea	131	18,063	29,721	60.8	131	19,101	29,728	64.3
"	Philippines	209	40,284	47,734	84.4	209	38,945	47,726	81.6
"	Singapore	1,248	240,539	297,398	80.9	1,244	238,363	295,333	80.7
"	South Africa	241	73,228	90,619	80.8	241	66,488	85,056	78.2
"	Taiwan	118	24,684	30,769	80.2	118	23,494	30,735	76.4
"	UK	866	285,789	338,970	84.3	867	287,083	339,387	84.6
"	USA	1,677	451,130	584,986	77.1	1,670	467,292	593,297	78.8
"	ALL SERVICES	13,953	3,044,711	3,879,326	78.5	13,949	3,044,094	3,881,761	78.4
Royal Brunei Airlines	Brunei	432	51,249	88,215	58.1	433	54,228	88,413	61.3
Singapore Airlines	New Zealand	1	-	..	-	..
"	Singapore	3,719	978,733	1,234,858	79.3	3,719	970,376	1,234,858	78.6
"	ALL SERVICES	3,720	978,733	1,234,858	79.3	3,719	970,376	1,234,858	78.6
Solomon Airlines (i)	Solomon Islands	-	..	-	..	-	..	-	..
South African Airways	South Africa	229	49,099	66,132	74.2	228	40,536	65,839	61.6
SriLankan Airlines (j)	Sri Lanka	10	2,044	3,120	65.5	10	1,724	3,120	55.3
Thai Airways International	New Zealand	375	65,462	146,777	44.6	375	59,611	146,777	40.6
"	Thailand	1,245	265,644	415,673	63.9	1,243	259,641	415,015	62.6
"	ALL SERVICES	1,620	331,106	562,450	58.9	1,618	319,252	561,792	56.8

TABLE 3: AIRLINE PASSENGER CAPACITY AND UTILISATION TO AND FROM AUSTRALIA BY OPERATOR: Year ended June 2002

Scheduled Operator	Service to/from	Inbound				Outbound			
		No. of Flights	Pax Carried	Seats Available	Seat Utilisation %	No. of Flights	Pax Carried	Seats Available	Seat Utilisation %
United Airlines	USA	996	246,344	351,198	70.1	996	248,010	350,504	70.8
United Parcel Service (c)	USA	104	-	..	-	..
Vietnam Airlines	Vietnam	214	42,741	57,669	74.1	214	41,617	57,745	72.1
TOTAL		43,807	8,466,941	11,427,541	74.1	43,539	8,397,843	11,436,333	73.4

NOTE 1: Some flights out of Australia are non-scheduled and therefore outbound activity is not recorded (see Explanatory Notes, paragraphs 4 and 5).

NOTE 2: Traffic shown in this table for airlines which fly through Australia may differ from traffic in Tables 1 and 2 because of the inclusion in this table of total traffic into and ex Australia (for seat factor purposes) whereas Tables 1 and 2 include uplift/discharge traffic only.

(a) Nil Operations for July 2001 to November 2001.

(b) Service ceased September 2001.

(c) Freight flights only.

(d) Traffic carried on behalf of Qantas Airways.

(e) Service ceased December 2001.

(f) Service commenced March 2002.

(g) Service ceased March 2002.

(h) Nil operations for May and July 2001. No data for August 2001 onwards.

(i) Latest data received is for June 2001.

(j) Service ceased July 2001.

TABLE 4: SCHEDULED INTERNATIONAL AIRPORT TRAFFIC AND AIRCRAFT MOVEMENTS: Year ended June

		Inbound		(%)	Outbound		(%)	Total		(%)	(%) of
		2001	2002	Change	2001	2002	Change	2001	2002	Change	TOTAL
Adelaide	Passengers	135,409	117,988	-12.9	128,454	111,649	-13.1	263,863	229,637	-13.0	1.4
"	Freight (Tonnes)	4,169	3,608	-13.5	8,598	6,996	-18.6	12,768	10,604	-16.9	1.7
"	Aircraft Movements	910	824	-9.5	968	925	-4.4	1,878	1,749	-6.9	1.7
Brisbane	Passengers	1,351,459	1,280,706	-5.2	1,187,233	1,176,358	-0.9	2,538,692	2,457,064	-3.2	14.9
"	Freight (Tonnes)	26,424	25,770	-2.5	52,319	47,758	-8.7	78,743	73,528	-6.6	11.6
"	Aircraft Movements	8,844	8,444	-4.5	8,694	8,401	-3.4	17,538	16,845	-4.0	16.0
Broome	Passengers	2,125	158	-92.6	2,130	115	-94.6	4,255	273	-93.6	0.0
"	Freight (Tonnes)	-	-	..	-	-	..	-	-
"	Aircraft Movements	52	3	-94.2	52	3	-94.2	104	6	-94.2	0.0
Cairns	Passengers	352,671	349,332	-0.9	348,354	341,263	-2.0	701,025	690,595	-1.5	4.2
"	Freight (Tonnes)	1,517	2,166	42.8	7,413	7,268	-2.0	8,930	9,433	5.6	1.5
"	Aircraft Movements	3,069	3,081	0.4	3,006	3,079	2.4	6,075	6,160	1.4	5.9
Coolangatta	Passengers	17,330	34,022	96.3	16,469	32,811	99.2	33,799	66,833	97.7	0.4
"	Freight (Tonnes)	-	-	..	-	-	..	-	-
"	Aircraft Movements	178	339	90.4	178	338	89.9	356	677	90.2	0.6
Darwin	Passengers	89,593	66,148	-26.2	82,697	61,555	-25.6	172,290	127,703	-25.9	0.8
"	Freight (Tonnes)	728	421	-42.2	831	916	10.2	1,559	1,337	-14.3	0.2
"	Aircraft Movements	1,886	993	-47.3	1,885	992	-47.4	3,771	1,985	-47.4	1.9
Melbourne	Passengers	1,630,228	1,661,419	1.9	1,622,202	1,635,136	0.8	3,252,430	3,296,555	1.4	20.0
"	Freight (Tonnes)	91,377	82,156	-10.1	98,525	97,436	-1.1	189,902	179,592	-5.4	28.3
"	Aircraft Movements	11,404	11,063	-3.0	11,490	11,260	-2.0	22,894	22,323	-2.5	21.2
Newcastle	Passengers	..	4,303	4,182	..	-	8,485	..	0.1
"	Freight (Tonnes)	..	-	-	..	-	-
"	Aircraft Movements	..	55	55	..	-	110	..	0.1
Norfolk Island	Passengers	7,589	8,272	9.0	7,344	8,339	13.5	14,933	16,611	11.2	0.1
"	Freight (Tonnes)	129	111	-14.2	15	24	58.3	144	135	-6.5	0.0
"	Aircraft Movements	105	105	..	103	104	1.0	208	209	0.5	0.2
Perth	Passengers	823,559	817,980	-0.7	783,826	778,266	-0.7	1,607,385	1,596,246	-0.7	9.7
"	Freight (Tonnes)	13,990	14,106	0.8	40,265	36,868	-8.4	54,255	50,974	-6.0	8.0
"	Aircraft Movements	4,944	4,278	-13.5	4,946	4,251	-14.1	9,890	8,529	-13.8	8.1

TABLE 4: SCHEDULED INTERNATIONAL AIRPORT TRAFFIC AND AIRCRAFT MOVEMENTS: Year ended June

		Inbound		(%)	Outbound		(%)	Total		(%)	(%) of
		2001	2002	Change	2001	2002	Change	2001	2002	Change	TOTAL
Sydney	Passengers	4,194,555	3,913,562	-6.7	4,343,277	4,045,003	-6.9	8,537,832	7,958,565	-6.8	48.4
"	Freight (Tonnes)	173,404	160,768	-7.3	145,981	148,940	2.0	319,385	309,708	-3.0	48.7
"	Aircraft Movements	25,333	23,493	-7.3	24,855	23,016	-7.4	50,188	46,509	-7.3	44.2
Townsville	Passengers	..	185	226	..	-	411	..	0.0
"	Freight (Tonnes)	..	-	0	..	-	0	..	0.0
"	Aircraft Movements	..	39	38	..	-	77	..	0.1
TOTAL	Passengers	8,604,518	8,254,075	-4.1	8,521,986	8,194,903	-3.8	17,126,504	16,448,978	-4.0	100.0
	Freight (Tonnes)	311,738	289,106	-7.3	353,947	346,206	-2.2	665,685	635,311	-4.6	100.0
	Aircraft Movements	56,725	52,717	-7.1	56,177	52,462	-6.6	112,902	105,179	-6.8	100.0

Please refer to explanatory notes.

TABLE 5: SCHEDULED INTERNATIONAL TRAFFIC BY CITY PAIRS: Year ended June

Foreign Port	Australian Port	Passengers						Freight (tonnes)					
		2001			2002			2001			2002		
		Inbound	Outbound	Total	Inbound	Outbound	Total	Inbound	Outbound	Total	Inbound	Outbound	Total
Auckland	Adelaide	53	1,056	1,109	46	358	404	184.1	184.2	368.3	76.2	106.9	183.1
Bangkok	"	15	3	18	22	23	45	8.2	96.7	104.8	13.3	11.2	24.4
Bombay	"	176	6	182	78	62	140	7.7	0.0	7.7	3.4	0.0	3.4
Buenos Aires	"	0	166	166	0	45	45	1.7	17.5	19.2	2.9	1.6	4.6
Christchurch	"	89	13	102	134	43	177	46.9	62.5	109.5	24.1	23.0	47.2
Denpasar	"	14,121	15,473	29,594	13,354	13,179	26,533	134.4	238.2	372.7	199.0	184.9	383.9
Frankfurt	"	3,222	2,306	5,528	1,742	1,342	3,084	10.3	7.6	17.9	6.2	2.1	8.4
Harare	"	0	0	0	0	0	0	0.1	0.4	0.5	0.0	0.0	0.0
Hong Kong	"	12,909	9,572	22,481	13,623	10,484	24,107	436.3	647.7	1,084.0	418.2	595.7	1,013.9
Honolulu	"	55	256	311	91	147	238	0.0	4.2	4.3	0.0	5.3	5.3
Jakarta	"	176	142	318	124	140	264	11.2	28.9	40.1	1.2	0.1	1.2
Johannesburg	"	0	0	0	0	0	0	23.7	10.0	33.8	8.3	19.6	27.9
Kuala Lumpur	"	37,678	37,027	74,705	30,737	29,993	60,730	785.1	1,438.2	2,223.3	804.2	1,140.0	1,944.3
London	"	5,135	5,103	10,238	2,889	2,535	5,424	41.6	44.2	85.8	37.5	29.5	67.0
Los Angeles	"	178	170	348	190	325	515	26.7	379.8	406.5	5.2	132.4	137.6
Manila	"	69	87	156	64	86	150	17.5	0.7	18.2	6.2	3.1	9.3
Nagoya	"	80	40	120	17	4	21	25.0	9.2	34.2	29.1	10.8	39.8
New York	"	26	40	66	0	11	11	6.5	41.2	47.7	1.1	3.3	4.5
Noumea	"	0	0	0	0	0	0	0.0	0.8	0.8	0.0	0.2	0.2
Osaka	"	0	0	0	1	0	1	0.0	0.0	0.0	3.8	7.0	10.8
Papeete	"	1	0	1	0	0	0	0.3	1.4	1.7	0.0	0.0	0.0
Paris	"	144	231	375	15	294	309	9.7	107.6	117.3	5.2	2.7	7.9
Port Moresby	"	0	0	0	0	0	0	4.0	2.2	6.2	0.0	1.0	1.0
Queenstown	"	0	0	0	1	0	1	0.0	0.0	0.0	0.0	0.0	0.0
Rome	"	24	0	24	217	257	474	28.8	0.2	29.0	3.3	0.1	3.4
Shanghai	"	0	4	4	0	0	0	10.5	0.4	10.8	0.0	0.0	0.0
Singapore	"	61,187	56,619	117,806	54,460	52,292	106,752	2,132.3	4,573.5	6,705.8	1,902.8	4,641.1	6,543.9
Taipei	"	0	34	34	0	6	6	0.1	2.1	2.2	0.0	1.1	1.1
Tokyo	"	32	4	36	153	12	165	204.4	668.4	872.9	55.6	71.4	127.0
Toronto	"	0	46	46	0	0	0	4.1	9.0	13.1	0.0	0.0	0.0
Vancouver	"	18	43	61	0	0	0	1.9	17.5	19.3	0.0	0.0	0.0
Wellington	"	21	13	34	30	11	41	5.8	4.2	10.1	1.4	1.9	3.2
Total	Adelaide	135,409	128,454	263,863	117,988	111,649	229,637	4,169.2	8,598.4	12,767.5	3,608.3	6,995.9	10,604.2
Atlanta	Brisbane	0	0	0	0	0	0	82.9	0.0	82.9	0.0	0.0	0.0
Auckland	"	242,108	255,502	497,610	220,846	223,255	444,101	6,244.7	8,629.6	14,874.3	6,560.7	7,709.2	14,269.9
Bandar Seri Begawan	"	22,704	23,860	46,564	24,616	26,448	51,064	330.1	1,246.9	1,577.0	404.5	1,666.4	2,070.9
Bangkok	"	29,828	31,331	61,159	27,487	28,568	56,055	576.9	1,111.5	1,688.4	563.8	1,323.9	1,887.7
Bombay	"	1,483	749	2,232	1,676	648	2,324	35.9	3.7	39.6	25.4	2.2	27.6
Buenos Aires	"	2,308	250	2,558	2,251	54	2,305	1.6	4.4	6.0	2.2	4.6	6.8
Chicago	"	0	0	0	0	0	0	93.8	0.0	93.8	44.3	0.0	44.3
Christchurch	"	90,986	89,670	180,656	82,560	83,747	166,307	1,434.6	2,381.8	3,816.3	928.5	1,393.4	2,322.0
Denpasar	"	28,141	28,083	56,224	24,762	25,139	49,901	468.4	424.9	893.3	542.7	648.0	1,190.7
Dili	"	0	0	0	0	0	0	0.3	0.3	0.6	0.0	0.0	0.0
Dunedin	"	14,216	14,065	28,281	15,395	16,042	31,437	0.0	0.0	0.0	0.0	0.0	0.0

TABLE 5: SCHEDULED INTERNATIONAL TRAFFIC BY CITY PAIRS: Year ended June

Foreign Port	Australian Port	Passengers						Freight (tonnes)					
		2001			2002			2001			2002		
		Inbound	Outbound	Total	Inbound	Outbound	Total	Inbound	Outbound	Total	Inbound	Outbound	Total
Frankfurt	Brisbane	4,252	3,828	8,080	5,038	5,989	11,027	103.6	55.4	159.0	138.4	13.0	151.4
Fukuoka	"	195	0	195	460	268	728	0.0	0.0	0.0	0.0	0.0	0.0
Hamilton	"	21,585	21,538	43,123	25,193	25,335	50,528	0.0	0.0	0.0	0.0	0.0	0.0
Harare	"	79	1	80	0	0	0	4.1	0.4	4.5	0.0	0.0	0.0
Hong Kong	"	61,906	56,855	118,761	63,534	62,542	126,076	1,521.3	3,957.3	5,478.6	2,361.2	4,265.8	6,627.0
Honiara	"	6,671	6,802	13,473	0	0	0	153.0	122.3	275.3	0.0	0.0	0.0
Honolulu	"	1,408	467	1,875	809	148	957	11.9	79.1	91.0	0.1	33.6	33.7
Jakarta	"	2,536	728	3,264	1,997	518	2,515	11.3	256.3	267.6	0.2	20.1	20.3
Johannesburg	"	312	144	456	0	220	220	163.1	15.3	178.4	5.1	6.9	12.0
Kuala Lumpur	"	72,183	68,674	140,857	60,957	58,887	119,844	2,151.8	2,254.5	4,406.4	2,086.5	2,219.1	4,305.6
London	"	24,278	19,800	44,078	13,063	13,729	26,792	219.4	93.2	312.6	185.9	33.8	219.7
Los Angeles	"	30,736	24,724	55,460	31,080	27,305	58,385	704.7	423.4	1,128.1	893.3	520.3	1,413.5
Manila	"	5,771	6,252	12,023	5,543	5,315	10,858	23.8	222.0	245.8	5.7	86.9	92.7
Nadi	"	14,142	13,400	27,542	25,566	25,073	50,639	134.0	258.3	392.3	167.1	232.8	399.9
Nagoya	"	8,957	2,177	11,134	7,065	1,153	8,218	14.3	219.4	233.7	14.2	306.4	320.6
Nauru	"	4,448	4,182	8,630	4,337	4,003	8,340	9.0	169.8	178.8	9.4	165.3	174.7
New York	"	376	156	532	112	22	134	221.4	112.9	334.2	83.1	11.0	94.2
Noumea	"	13,580	14,454	28,034	16,195	17,311	33,506	19.3	143.9	163.2	13.5	158.7	172.2
Osaka	"	170,648	27,696	198,344	118,795	28,607	147,402	2,988.6	2,731.1	5,719.7	885.3	2,195.0	3,080.4
Palmerston	"	13,674	13,737	27,411	15,246	15,338	30,584	0.0	0.0	0.0	0.0	0.0	0.0
Papeete	"	336	140	476	0	0	0	1.5	1.1	2.6	0.0	0.0	0.0
Paris	"	1,722	2,403	4,125	2,339	2,438	4,777	36.8	93.3	130.2	1.7	2.8	4.5
Port Moresby	"	30,946	33,935	64,881	33,512	36,260	69,772	388.7	1,746.0	2,134.7	1,136.8	1,840.1	2,976.9
Port Vila	"	11,320	11,418	22,738	10,155	10,066	20,221	34.5	158.4	192.9	40.0	145.8	185.7
Queenstown	"	1,073	1,320	2,393	2,260	2,269	4,529	0.0	0.0	0.0	0.0	0.0	0.0
Rome	"	164	38	202	1,130	1,336	2,466	23.4	1.3	24.6	64.2	1.4	65.5
San Francisco	"	0	0	0	0	0	0	11.8	0.0	11.8	0.0	0.0	0.0
Seoul	"	21,637	16,605	38,242	26,415	23,302	49,717	631.7	1,639.7	2,271.5	467.3	1,526.8	1,994.1
Shanghai	"	632	550	1,182	0	0	0	27.4	28.5	55.9	0.0	0.0	0.0
Singapore	"	186,208	183,369	369,577	213,710	210,254	423,964	3,950.0	14,411.4	18,361.4	4,627.1	13,188.4	17,815.6
Taipei	"	43,717	42,403	86,120	33,599	32,637	66,236	1,439.4	2,245.3	3,684.7	1,335.4	1,694.3	3,029.7
Tokyo	"	116,891	119,214	236,105	117,417	118,197	235,614	2,028.8	6,990.3	9,019.1	2,136.8	6,303.8	8,440.7
Toledo	"	0	0	0	0	0	0	45.6	0.0	45.6	6.9	0.0	6.9
Toronto	"	93	47	140	0	0	0	17.6	6.4	24.0	0.0	0.0	0.0
Vancouver	"	591	405	996	0	0	0	2.3	2.0	4.3	0.0	0.0	0.0
Wellington	"	46,618	46,261	92,879	45,586	43,935	89,521	61.1	77.0	138.1	33.1	37.8	70.9
Total	Brisbane	1,351,459	1,187,233	2,538,692	1,280,706	1,176,358	2,457,064	26,424.4	52,318.6	78,743.0	25,770.4	47,757.6	73,528.1
Denpasar	Broome	2,125	2,130	4,255	158	115	273	0.0	0.0	0.0	0.0	0.0	0.0
Total	Broome	2,125	2,130	4,255	158	115	273	0.0	0.0	0.0	0.0	0.0	0.0
Auckland	Cairns	9,838	13,606	23,444	13,252	18,087	31,339	211.4	76.0	287.4	118.2	54.2	172.3
Bangkok	"	150	98	248	390	113	503	1.6	2.8	4.4	0.6	4.8	5.4
Bombay	"	817	239	1,056	230	104	334	8.2	0.0	8.2	3.4	0.2	3.6
Buenos Aires	"	96	353	449	32	175	207	0.0	0.0	0.0	0.0	0.2	0.2
Christchurch	"	1,517	1,240	2,757	1,332	1,616	2,948	29.1	1.4	30.5	0.8	3.7	4.5

TABLE 5: SCHEDULED INTERNATIONAL TRAFFIC BY CITY PAIRS: Year ended June

Foreign Port	Australian Port	Passengers						Freight (tonnes)					
		2001			2002			2001			2002		
		Inbound	Outbound	Total	Inbound	Outbound	Total	Inbound	Outbound	Total	Inbound	Outbound	Total
Denpasar	Cairns	9,234	9,400	18,634	603	659	1,262	19.9	3.3	23.1	16.6	2.2	18.8
Dili	"	62	6	68	0	0	0	0.2	8.0	8.2	0.0	0.0	0.0
Frankfurt	"	3,156	8,350	11,506	3,469	8,682	12,151	11.8	4.3	16.1	0.7	3.9	4.6
Fukuoka	"	10	0	10	0	13	13	0.0	0.0	0.0	0.0	0.0	0.0
Guam	"	10,646	10,930	21,576	10,675	10,720	21,395	2.9	27.9	30.9	0.3	39.1	39.4
Harare	"	0	0	0	0	0	0	0.0	0.1	0.1	0.0	0.0	0.0
Hong Kong	"	33,300	22,205	55,505	36,899	25,381	62,280	263.8	3,018.7	3,282.5	254.6	3,137.0	3,391.6
Honolulu	"	420	845	1,265	144	758	902	12.5	1.6	14.1	0.0	1.9	1.9
Jakarta	"	209	166	375	200	192	392	0.0	16.5	16.5	0.3	4.5	4.7
Johannesburg	"	5	132	137	0	219	219	0.6	0.8	1.4	0.5	0.4	0.9
Kuala Lumpur	"	10,417	14,137	24,554	7,321	9,420	16,741	33.4	132.9	166.3	24.3	133.6	158.0
Lae	"	575	0	575	0	0	0	0.0	0.0	0.0	0.0	0.0	0.0
London	"	7,438	8,778	16,216	6,759	7,774	14,533	1.5	17.5	19.0	0.5	9.9	10.4
Los Angeles	"	4,099	4,707	8,806	4,298	5,591	9,889	5.7	255.1	260.8	13.8	143.1	156.9
Manila	"	180	69	249	81	76	157	0.0	5.5	5.5	0.0	8.1	8.1
Mount Hagen	"	0	708	708	0	0	0	0.0	6.2	6.2	0.0	0.0	0.0
Nagoya	"	61,550	47,201	108,751	63,260	56,806	120,066	16.6	452.5	469.1	148.6	475.4	624.0
New York	"	8	241	249	8	113	121	0.0	15.7	15.7	0.1	5.3	5.4
Noumea	"	2	0	2	2	4	6	0.0	0.7	0.7	0.0	1.4	1.4
Osaka	"	0	0	0	33,071	25,605	58,676	0.0	0.0	0.0	368.4	381.6	750.0
Papeete	"	0	43	43	0	0	0	0.0	1.4	1.4	0.0	0.0	0.0
Paris	"	1,074	2,874	3,948	768	2,380	3,148	2.5	2.7	5.3	0.4	0.3	0.7
Port Moresby	"	34,253	32,777	67,030	26,848	24,321	51,169	672.6	527.4	1,200.0	245.9	375.2	621.1
Queenstown	"	0	0	0	6	19	25	0.0	0.0	0.0	0.0	0.0	0.0
Rome	"	55	58	113	221	439	660	1.4	0.1	1.4	0.3	0.2	0.6
Shanghai	"	0	79	79	0	0	0	0.0	0.0	0.0	0.0	0.0	0.0
Singapore	"	47,585	48,945	96,530	20,545	21,758	42,303	193.0	1,877.8	2,070.9	194.1	568.3	762.4
Taipei	"	3	4	7	60	45	105	0.0	0.5	0.5	0.1	0.3	0.4
Tokyo	"	115,642	119,483	235,125	118,284	119,486	237,770	26.8	954.1	980.9	773.1	1,912.4	2,685.5
Toronto	"	33	45	78	0	0	0	0.0	0.1	0.1	0.0	0.0	0.0
Vancouver	"	50	343	393	0	0	0	0.0	1.4	1.4	0.0	0.0	0.0
Wellington	"	247	292	539	574	707	1,281	1.4	0.2	1.6	0.0	0.6	0.6
Total	Cairns	352,671	348,354	701,025	349,332	341,263	690,595	1,516.9	7,413.1	8,930.0	2,165.7	7,267.7	9,433.3
Auckland	Coolangatta	0	0	0	16,617	15,716	32,333	0.0	0.0	0.0	0.0	0.0	0.0
Dunedin	"	0	0	0	1,359	1,146	2,505	0.0	0.0	0.0	0.0	0.0	0.0
Hamilton	"	9,659	9,162	18,821	9,538	9,546	19,084	0.0	0.0	0.0	0.0	0.0	0.0
Noumea	"	1,100	1,127	2,227	0	0	0	0.0	0.0	0.0	0.0	0.0	0.0
Palmerston	"	6,571	6,180	12,751	6,508	6,403	12,911	0.0	0.0	0.0	0.0	0.0	0.0
Total	Coolangatta	17,330	16,469	33,799	34,022	32,811	66,833	0.0	0.0	0.0	0.0	0.0	0.0
Auckland	Darwin	154	25	179	52	118	170	50.7	10.1	60.8	0.7	3.7	4.4
Bandar Seri Begawan	"	5,269	5,326	10,595	6,255	6,427	12,682	86.3	24.0	110.3	42.0	38.8	80.8
Bangkok	"	0	0	0	6	9	15	13.1	1.3	14.4	2.9	0.2	3.1
Bombay	"	96	58	154	89	57	146	2.1	0.1	2.1	17.2	0.0	17.2
Buenos Aires	"	0	0	0	0	0	0	0.0	0.8	0.8	0.0	0.4	0.4

TABLE 5: SCHEDULED INTERNATIONAL TRAFFIC BY CITY PAIRS: Year ended June

Foreign Port	Australian Port	Passengers						Freight (tonnes)					
		2001			2002			2001			2002		
		Inbound	Outbound	Total	Inbound	Outbound	Total	Inbound	Outbound	Total	Inbound	Outbound	Total
Christchurch	Darwin	6	19	25	15	84	99	3.6	1.9	5.4	0.0	0.9	0.9
Denpasar	"	26,855	27,876	54,731	21,348	23,501	44,849	31.7	1.8	33.5	21.9	4.5	26.4
Dili	"	4,987	5,202	10,189	0	0	0	3.7	16.7	20.4	0.0	0.0	0.0
Frankfurt	"	5,730	3,972	9,702	5,587	3,875	9,462	25.7	2.9	28.6	8.3	2.4	10.7
Harare	"	0	0	0	0	0	0	0.1	0.4	0.5	0.0	0.0	0.0
Hong Kong	"	829	233	1,062	563	65	628	2.8	176.3	179.1	4.0	107.2	111.2
Honolulu	"	3	0	3	4	0	4	0.8	1.9	2.7	0.0	2.4	2.4
Jakarta	"	153	98	251	135	73	208	2.3	1.8	4.0	1.1	1.4	2.5
Johannesburg	"	0	0	0	0	0	0	3.0	3.3	6.3	1.9	1.4	3.3
Kuala Lumpur	"	13,502	11,711	25,213	7,792	5,960	13,752	181.5	177.9	359.4	96.5	113.0	209.5
Kupang	"	1,299	1,479	2,778	0	0	0	3.4	4.0	7.4	0.0	0.0	0.0
London	"	5,408	4,628	10,036	4,777	4,504	9,281	13.8	23.1	36.9	8.3	29.4	37.7
Los Angeles	"	146	27	173	33	136	169	22.5	24.3	46.8	2.0	8.5	10.5
Manila	"	106	1	107	0	2	2	0.2	0.3	0.5	0.2	0.2	0.4
Nagoya	"	197	82	279	88	47	135	3.0	1.0	4.0	0.1	0.0	0.1
New York	"	0	0	0	0	0	0	13.6	4.3	17.9	9.6	0.7	10.3
Noumea	"	0	0	0	0	0	0	0.0	0.0	0.0	0.0	0.0	0.0
Osaka	"	0	0	0	10	9	19	0.0	0.0	0.0	0.2	0.0	0.2
Papeete	"	0	0	0	0	0	0	0.0	0.5	0.5	0.0	0.0	0.0
Paris	"	1,219	1,439	2,658	902	966	1,868	3.8	3.7	7.4	1.0	12.7	13.6
Port Moresby	"	0	0	0	0	0	0	0.0	0.2	0.2	0.0	0.0	0.0
Rome	"	0	2	2	185	115	300	12.5	0.3	12.8	4.0	0.3	4.3
Singapore	"	23,077	20,247	43,324	18,053	15,435	33,488	239.9	329.0	568.9	196.1	580.8	777.0
Taipei	"	0	0	0	0	0	0	0.0	0.0	0.0	0.0	0.0	0.0
Tokyo	"	528	269	797	244	159	403	5.6	14.7	20.3	3.0	7.1	10.1
Toronto	"	1	0	1	0	0	0	0.5	0.6	1.1	0.0	0.0	0.0
Vancouver	"	2	0	2	0	0	0	1.0	4.0	5.0	0.0	0.0	0.0
Wellington	"	26	3	29	10	13	23	1.1	0.2	1.3	0.0	0.3	0.3
Total	Darwin	89,593	82,697	172,290	66,148	61,555	127,703	728.2	831.2	1,559.4	420.8	916.4	1,337.2
Abu Dhabi	Melbourne	10,948	4,761	15,709	0	0	0	333.7	618.0	951.7	0.0	0.0	0.0
Amsterdam	"	0	0	0	0	0	0	0.0	2.0	2.0	0.0	0.0	0.0
Apia	"	518	581	1,099	0	0	0	13.2	11.6	24.8	0.0	0.0	0.0
Athens	"	10,511	11,170	21,681	9,629	10,056	19,685	162.8	75.1	237.9	110.1	74.1	184.2
Atlanta	"	0	0	0	0	0	0	2,143.0	0.0	2,143.0	931.1	0.0	931.1
Auckland	"	246,185	245,417	491,602	259,018	259,676	518,694	11,908.4	17,126.8	29,035.2	14,890.7	17,074.6	31,965.3
Bahrain	"	18,231	11,822	30,053	7,716	6,735	14,451	647.1	1,828.8	2,476.0	335.7	1,287.9	1,623.6
Bangkok	"	109,183	109,274	218,457	114,912	113,246	228,158	3,812.7	5,179.9	8,992.6	4,245.9	6,058.3	10,304.1
Beijing	"	5,306	2,426	7,732	9,061	4,235	13,296	83.8	171.1	254.9	46.3	177.8	224.1
Bombay	"	4,213	428	4,641	3,762	268	4,030	132.3	120.3	252.7	72.3	16.9	89.2
Buenos Aires	"	4,364	4,291	8,655	4,473	4,205	8,678	34.8	7.1	41.9	19.9	3.4	23.2
Chicago	"	630	536	1,166	1,684	2,097	3,781	2,891.7	0.0	2,891.7	3,949.1	0.0	3,949.1
Christchurch	"	88,894	81,909	170,803	76,498	74,495	150,993	3,484.9	2,168.2	5,653.2	1,860.2	1,361.2	3,221.4
Denpasar	"	69,463	68,491	137,954	55,614	53,017	108,631	2,257.0	2,341.1	4,598.2	1,961.7	2,390.0	4,351.7
Dili	"	0	0	0	0	0	0	0.0	0.1	0.1	0.0	0.0	0.0

TABLE 5: SCHEDULED INTERNATIONAL TRAFFIC BY CITY PAIRS: Year ended June

Foreign Port	Australian Port	Passengers						Freight (tonnes)					
		2001			2002			2001			2002		
		Inbound	Outbound	Total	Inbound	Outbound	Total	Inbound	Outbound	Total	Inbound	Outbound	Total
Dubai	Melbourne	59,577	57,129	116,706	58,740	59,878	118,618	2,087.3	3,333.2	5,420.4	1,651.0	4,336.8	5,987.7
Dunedin	"	3,662	3,375	7,037	6,310	6,143	12,453	0.0	0.0	0.0	0.0	0.0	0.0
Frankfurt	"	18,515	17,202	35,717	14,378	13,816	28,194	2,448.9	1,203.6	3,652.5	2,085.1	1,896.4	3,981.5
Fukuoka	"	1	9	10	0	1	1	17.8	0.0	17.8	0.0	0.0	0.0
Guangzhou	"	9,156	4,495	13,651	20,410	11,043	31,453	540.4	73.8	614.2	1,102.4	284.5	1,386.8
Hamilton	"	10,496	9,826	20,322	11,513	11,000	22,513	0.0	0.0	0.0	0.0	0.0	0.0
Hanoi	"	776	704	1,480	1,976	1,861	3,837	34.3	104.3	138.7	8.3	10.7	19.0
Harare	"	17	4	21	0	0	0	5.4	1.7	7.1	0.0	0.0	0.0
Ho Chi Minh City	"	13,553	13,119	26,672	18,487	17,640	36,127	191.1	210.1	401.1	376.9	224.7	601.6
Hong Kong	"	129,433	140,896	270,329	128,185	131,655	259,840	10,979.0	14,749.9	25,728.9	9,606.7	13,475.7	23,082.4
Honolulu	"	3,384	7,749	11,133	7,253	12,701	19,954	91.8	53.6	145.4	264.1	284.6	548.7
Jakarta	"	10,803	5,911	16,714	8,972	4,524	13,496	116.6	1,027.7	1,144.3	40.1	282.2	322.4
Johannesburg	"	354	239	593	144	848	992	231.7	202.5	434.2	79.3	26.9	106.2
Karachi	"	0	0	0	0	0	0	0.0	0.2	0.2	0.0	26.0	26.0
Kota Kinabalu	"	0	184	184	0	0	0	0.0	0.0	0.0	0.0	0.0	0.0
Kuala Lumpur	"	103,120	103,969	207,089	104,425	111,330	215,755	7,901.0	6,632.7	14,533.7	6,612.7	8,841.0	15,453.7
Lahore	"	0	0	0	0	0	0	0.0	2.8	2.8	0.0	0.4	0.4
London	"	64,832	78,047	142,879	84,835	86,207	171,042	2,020.6	587.5	2,608.1	2,794.4	605.1	3,399.6
Los Angeles	"	144,792	145,185	289,977	103,175	105,302	208,477	4,681.8	6,449.0	11,130.7	2,925.9	3,171.1	6,097.0
Luxembourg	"	0	0	0	0	0	0	4,801.5	0.0	4,801.5	4,337.7	0.0	4,337.7
Manila	"	3,678	1,560	5,238	10,632	7,095	17,727	209.7	468.0	677.8	226.3	558.4	784.7
Mauritius	"	8,188	7,797	15,985	8,112	7,585	15,697	222.2	172.6	394.8	287.8	186.5	474.3
Nadi	"	13,597	13,009	26,606	30,568	29,399	59,967	289.7	285.2	574.8	555.1	789.4	1,344.4
Nagoya	"	242	812	1,054	66	756	822	731.0	137.1	868.2	44.7	46.6	91.2
Nauru	"	1,763	1,702	3,465	1,369	1,455	2,824	3.0	46.5	49.5	1.5	56.7	58.2
New Delhi	"	0	0	0	0	0	0	0.0	0.0	0.0	0.0	12.5	12.5
New York	"	7,417	9,296	16,713	4,723	4,707	9,430	3,125.1	182.2	3,307.3	926.9	70.3	997.2
Noumea	"	24	65	89	9	71	80	0.1	5.6	5.7	0.2	4.4	4.6
Osaka	"	0	0	0	1	69	70	0.0	0.0	0.0	8.3	46.7	55.0
Pago Pago	"	0	290	290	0	0	0	0.0	1.3	1.3	0.0	0.0	0.0
Palmerston	"	8,389	7,735	16,124	7,024	6,666	13,690	0.0	0.0	0.0	0.0	0.0	0.0
Papeete	"	474	474	948	0	0	0	4.1	90.4	94.5	0.0	0.0	0.0
Paris	"	4,625	4,108	8,733	3,807	4,057	7,864	300.8	21.4	322.2	56.1	13.0	69.1
Penang	"	0	0	0	0	0	0	0.0	19.8	19.8	278.8	259.4	538.3
Port Moresby	"	178	44	222	106	7	113	13.3	62.5	75.7	1.7	20.1	21.8
Port Vila	"	6,897	6,873	13,770	4,942	4,701	9,643	3.5	30.1	33.6	2.7	29.3	32.0
Queenstown	"	994	1,221	2,215	486	381	867	0.0	0.1	0.1	0.0	0.0	0.0
Rome	"	25,267	26,029	51,296	23,671	22,884	46,555	809.0	60.6	869.6	631.8	63.4	695.1
San Francisco	"	0	0	0	11,793	12,258	24,051	0.9	7.1	8.1	123.4	871.6	995.0
Shanghai	"	83	3,510	3,593	0	0	0	386.2	179.6	565.8	0.0	0.0	0.0
Sharjah	"	0	0	0	0	0	0	0.0	0.0	0.0	0.0	3.0	3.0
Singapore	"	309,779	309,664	619,443	334,963	328,672	663,635	18,159.4	29,607.5	47,766.8	17,494.3	31,236.3	48,730.6
Taipei	"	1,084	1,238	2,322	858	743	1,601	171.6	251.0	422.7	20.9	33.1	54.0
Tokyo	"	28,335	19,122	47,457	28,883	20,376	49,259	1,199.4	1,937.3	3,136.7	768.2	541.7	1,309.9

TABLE 5: SCHEDULED INTERNATIONAL TRAFFIC BY CITY PAIRS: Year ended June

Foreign Port	Australian Port	Passengers						Freight (tonnes)					
		2001			2002			2001			2002		
		Inbound	Outbound	Total	Inbound	Outbound	Total	Inbound	Outbound	Total	Inbound	Outbound	Total
Toledo	Melbourne	0	0	0	0	0	0	910.7	0.0	910.7	7.7	0.0	7.7
Tongatapu	"	333	871	1,204	0	0	0	7.6	3.1	10.7	0.0	0.0	0.0
Toronto	"	372	506	878	4,346	4,520	8,866	68.4	25.9	94.3	223.7	556.2	779.9
Vancouver	"	944	3,727	4,671	0	0	0	39.3	133.5	172.8	0.0	0.0	0.0
Vienna	"	16,293	22,155	38,448	20,615	20,448	41,063	422.6	122.6	545.2	0.0	0.0	0.0
Wellington	"	50,355	51,245	101,600	53,275	56,307	109,582	244.7	391.0	635.7	188.8	127.1	315.9
Total	Melbourne	1,630,228	1,622,202	3,252,430	1,661,419	1,635,136	3,296,555	91,377.1	98,524.6	189,901.7	82,156.5	97,435.6	179,592.0
Auckland	Newcastle	0	0	0	4,303	4,182	8,485	0.0	0.0	0.0	0.0	0.0	0.0
Total	Newcastle	0	0	0	4,303	4,182	8,485	0.0	0.0	0.0	0.0	0.0	0.0
Auckland	Norfolk Island	7,589	7,344	14,933	8,272	8,339	16,611	128.8	15.1	144.0	110.6	24.0	134.6
Total	Norfolk Island	7,589	7,344	14,933	8,272	8,339	16,611	128.8	15.1	144.0	110.6	24.0	134.6
Athens	Perth	106	0	106	0	0	0	0.0	0.0	0.0	0.0	0.0	0.0
Auckland	"	28,482	29,536	58,018	34,874	33,709	68,583	1,608.8	945.5	2,554.3	1,580.6	700.1	2,280.7
Bandar Seri Begawan	"	19,162	19,308	38,470	20,378	21,353	41,731	173.9	764.0	937.9	151.7	946.3	1,098.0
Bangkok	"	30,484	29,463	59,947	36,685	35,148	71,833	973.6	1,862.2	2,835.9	692.4	2,065.3	2,757.7
Bombay	"	1,576	1,395	2,971	1,251	1,006	2,257	17.1	2.3	19.4	8.1	8.0	16.1
Buenos Aires	"	2	0	2	10	0	10	10.9	12.2	23.1	0.0	0.0	0.0
Chicago	"	0	0	0	0	0	0	0.0	0.0	0.0	4.3	0.0	4.3
Christchurch	"	414	563	977	294	0	294	136.8	23.3	160.1	3.6	0.0	3.6
Denpasar	"	99,549	98,972	198,521	91,281	90,587	181,868	285.6	366.2	651.8	291.0	549.5	840.5
Dili	"	0	0	0	0	0	0	0.0	0.0	0.0	0.0	0.0	0.0
Frankfurt	"	5,844	4,955	10,799	5,241	5,482	10,723	65.4	19.9	85.2	12.1	33.1	45.3
Harare	"	1,526	1,073	2,599	0	0	0	29.5	5.6	35.0	0.0	0.0	0.0
Hong Kong	"	40,844	38,793	79,637	42,828	40,459	83,287	1,040.1	4,056.5	5,096.6	1,111.6	4,529.4	5,641.0
Honolulu	"	311	6	317	0	0	0	3.4	97.7	101.1	0.0	5.4	5.4
Jakarta	"	19,374	18,246	37,620	18,073	17,490	35,563	40.1	314.2	354.3	191.0	338.7	529.7
Johannesburg	"	44,907	39,153	84,060	49,598	41,481	91,079	714.9	1,203.6	1,918.5	870.9	2,007.0	2,877.9
Kuala Lumpur	"	123,474	114,073	237,547	95,009	91,005	186,014	1,932.8	4,524.3	6,457.1	1,881.7	3,073.4	4,955.0
Kuching	"	4,126	4,486	8,612	4,169	4,410	8,579	0.1	299.7	299.8	0.5	445.7	446.2
London	"	16,537	22,868	39,405	19,046	19,200	38,246	150.2	15.7	165.9	106.8	17.9	124.7
Los Angeles	"	1,008	374	1,382	0	16	16	35.4	295.2	330.6	0.7	0.2	0.8
Manila	"	32	0	32	0	0	0	4.7	46.8	51.4	0.6	0.3	1.0
Mauritius	"	6,374	6,470	12,844	5,710	5,739	11,449	66.2	509.8	576.0	92.2	443.8	536.1
Nagoya	"	3	0	3	0	0	0	1.2	34.3	35.5	0.0	0.0	0.0
New York	"	38	3	41	0	0	0	35.7	219.0	254.7	3.1	3.8	6.9
Noumea	"	0	0	0	0	0	0	0.5	0.1	0.6	0.0	0.0	0.0
Osaka	"	0	0	0	0	0	0	0.0	0.0	0.0	0.0	0.0	0.0
Papeete	"	0	0	0	0	0	0	0.0	0.4	0.4	0.0	0.0	0.0
Paris	"	3,418	3,058	6,476	2,593	3,184	5,777	20.5	10.3	30.9	5.9	24.8	30.8
Phuket	"	13,802	13,872	27,674	11,731	11,591	23,322	0.1	0.7	0.8	0.0	7.8	7.8
Port Moresby	"	4	0	4	0	0	0	5.8	6.6	12.4	0.0	0.0	0.0
Queenstown	"	0	0	0	0	2	2	0.0	0.0	0.0	0.0	0.0	0.0
Rome	"	0	0	0	549	675	1,224	8.4	0.1	8.5	0.6	0.1	0.6
Shanghai	"	0	2	2	0	0	0	12.0	0.4	12.4	0.0	0.0	0.0

TABLE 5: SCHEDULED INTERNATIONAL TRAFFIC BY CITY PAIRS: Year ended June

Foreign Port	Australian Port	Passengers						Freight (tonnes)					
		2001			2002			2001			2002		
		Inbound	Outbound	Total	Inbound	Outbound	Total	Inbound	Outbound	Total	Inbound	Outbound	Total
Singapore	Perth	337,231	315,013	652,244	354,111	332,788	686,899	6,373.1	23,399.4	29,772.5	6,703.5	20,521.1	27,224.5
Taipei	"	0	0	0	0	0	0	2.0	0.3	2.4	0.4	0.3	0.7
Tokyo	"	24,640	21,969	46,609	24,507	22,941	47,448	223.8	1,180.5	1,404.3	392.9	1,145.7	1,538.6
Toronto	"	30	1	31	0	0	0	4.3	18.1	22.4	0.0	0.0	0.0
Vancouver	"	139	0	139	0	0	0	0.2	19.0	19.2	0.0	0.0	0.0
Wellington	"	122	174	296	42	0	42	12.7	11.2	23.9	0.0	0.0	0.0
Total	Perth	823,559	783,826	1,607,385	817,980	778,266	1,596,246	13,989.8	40,265.0	54,254.8	14,106.1	36,867.8	50,974.0
Abu Dhabi	Sydney	3,872	2,744	6,616	0	0	0	202.9	138.8	341.7	0.0	0.0	0.0
Amsterdam	"	33,140	33,657	66,797	0	0	0	9,104.8	2,346.4	11,451.2	10,554.6	2,072.6	12,627.2
Apia	"	4,155	2,019	6,174	4,163	3,905	8,068	92.1	27.4	119.5	57.7	17.9	75.6
Athens	"	19,187	19,380	38,567	15,355	14,569	29,924	165.4	100.8	266.2	171.2	72.1	243.2
Atlanta	"	0	0	0	0	0	0	2,119.6	5.3	2,124.9	252.9	0.0	252.9
Auckland	"	497,829	511,599	1,009,428	475,025	492,801	967,826	21,368.5	28,765.0	50,133.5	21,514.8	27,073.6	48,588.3
Bahrain	"	28,517	19,624	48,141	14,115	12,509	26,624	1,217.1	717.8	1,934.9	293.0	530.4	823.5
Bangkok	"	227,519	209,283	436,802	230,774	217,845	448,619	5,039.0	3,251.6	8,290.6	5,952.1	4,206.9	10,158.9
Beijing	"	29,881	29,819	59,700	28,159	28,455	56,614	301.8	437.2	738.9	199.8	517.2	717.0
Bombay	"	10,088	12,584	22,672	6,680	9,125	15,805	158.1	56.2	214.3	53.1	47.4	100.5
Buenos Aires	"	26,800	29,440	56,240	21,563	25,048	46,611	170.3	1,003.6	1,173.9	152.6	295.0	447.6
Cairo	"	15,428	15,727	31,155	14,203	14,646	28,849	369.1	296.7	665.8	336.1	364.4	700.4
Cebu	"	0	0	0	158	163	321	0.0	0.0	0.0	3.5	3.4	6.9
Chicago	"	7,902	9,347	17,249	8,813	7,927	16,740	4,154.8	0.1	4,154.9	3,866.0	0.0	3,866.0
Christchurch	"	193,840	204,146	397,986	193,842	197,721	391,563	4,367.4	3,060.0	7,427.4	4,268.2	4,294.3	8,562.5
Colombo	"	31,272	28,920	60,192	2,044	1,724	3,768	1,491.2	1,083.8	2,574.9	95.5	42.1	137.5
Denpasar	"	109,770	109,896	219,666	90,248	92,641	182,889	2,201.0	1,557.9	3,758.9	1,874.1	1,534.1	3,408.2
Dili	"	0	0	0	0	0	0	0.1	5.9	6.0	0.0	0.0	0.0
Dubai	"	37,857	39,946	77,803	41,243	44,461	85,704	1,676.8	1,542.6	3,219.4	1,898.3	1,788.2	3,686.5
Dunedin	"	8,836	8,624	17,460	8,181	7,973	16,154	0.0	0.0	0.0	0.0	0.0	0.0
Frankfurt	"	25,881	29,120	55,001	25,587	29,459	55,046	2,014.2	169.0	2,183.3	1,489.6	126.8	1,616.3
Fukuoka	"	2,196	3,605	5,801	877	1,392	2,269	16.3	0.2	16.5	0.0	0.0	0.0
Guangzhou	"	17,310	20,950	38,260	28,055	33,922	61,977	704.9	66.6	771.5	767.0	141.9	908.8
Hamilton	"	12,098	11,874	23,972	11,160	11,302	22,462	0.0	0.0	0.0	0.0	0.0	0.0
Hanoi	"	2,370	2,207	4,577	2,941	3,311	6,252	0.0	58.7	58.7	3.8	46.1	49.8
Harare	"	862	877	1,739	0	0	0	54.5	11.2	65.7	0.0	0.0	0.0
Ho Chi Minh City	"	14,143	15,495	29,638	19,337	18,805	38,142	478.2	245.8	724.0	506.8	221.4	728.2
Hong Kong	"	342,826	327,229	670,055	283,734	278,738	562,472	15,970.1	17,454.9	33,425.0	13,670.6	15,625.8	29,296.4
Honolulu	"	71,742	61,639	133,381	63,222	59,716	122,938	1,388.0	1,228.6	2,616.6	1,370.2	2,089.9	3,460.1
Jakarta	"	35,124	41,362	76,486	40,042	47,944	87,986	203.1	551.8	754.9	598.6	1,328.3	1,926.8
Johannesburg	"	55,420	52,018	107,438	61,977	56,128	118,105	1,493.9	1,064.4	2,558.3	1,101.0	327.0	1,427.9
Kota Kinabalu	"	0	292	292	0	0	0	0.0	0.0	0.0	0.0	0.0	0.0
Kuala Lumpur	"	143,613	134,011	277,624	147,150	140,216	287,366	4,304.3	3,038.4	7,342.7	5,402.1	2,929.7	8,331.7
London	"	181,018	187,520	368,538	178,569	183,143	361,712	6,856.2	1,751.6	8,607.8	6,213.9	1,915.0	8,128.9
Los Angeles	"	410,082	414,279	824,361	338,388	340,768	679,156	21,426.3	8,195.2	29,621.5	19,612.7	8,211.2	27,823.9
Louisville	"	0	0	0	0	0	0	3,610.7	0.0	3,610.7	4,480.4	0.0	4,480.4
Manila	"	60,372	61,952	122,324	49,620	52,159	101,779	1,108.6	1,649.3	2,757.9	1,299.8	1,436.8	2,736.6

TABLE 5: SCHEDULED INTERNATIONAL TRAFFIC BY CITY PAIRS: Year ended June

Foreign Port	Australian Port	Passengers						Freight (tonnes)					
		2001			2002			2001			2002		
		Inbound	Outbound	Total	Inbound	Outbound	Total	Inbound	Outbound	Total	Inbound	Outbound	Total
Milan	Sydney	0	0	0	0	0	0	0.0	0.0	0.0	0.0	0.0	0.0
Nadi	"	74,106	75,624	149,730	95,636	96,704	192,340	3,075.7	2,793.8	5,869.5	3,361.7	2,734.8	6,096.5
Nagoya	"	25,897	42,703	68,600	22,182	33,490	55,672	751.0	694.2	1,445.2	915.1	1,045.1	1,960.2
Nauru	"	787	763	1,550	174	135	309	0.2	2.5	2.7	0.2	1.4	1.7
New York	"	27,696	29,622	57,318	17,577	16,612	34,189	5,706.6	189.7	5,896.4	3,695.7	312.8	4,008.5
Noumea	"	38,935	36,525	75,460	42,110	41,561	83,671	28.7	326.5	355.2	23.4	458.5	482.0
Osaka	"	74,986	205,186	280,172	49,774	136,461	186,235	1,214.0	5,782.2	6,996.2	1,302.2	3,773.3	5,075.4
Pago Pago	"	0	0	0	0	0	0	0.0	0.0	0.0	0.3	0.0	0.3
Palmerston	"	9,697	9,087	18,784	9,828	9,427	19,255	0.0	0.0	0.0	0.0	0.0	0.0
Papeete	"	2,720	3,121	5,841	334	3,468	3,802	1.8	26.2	28.0	0.0	10.7	10.7
Paris	"	18,685	20,801	39,486	18,003	18,919	36,922	806.1	72.2	878.3	618.4	57.0	675.4
Port Moresby	"	10,832	10,289	21,121	11,656	10,885	22,541	143.6	555.2	698.8	307.1	493.2	800.3
Port Vila	"	16,919	16,565	33,484	15,323	15,328	30,651	134.0	187.3	321.3	91.6	180.6	272.2
Queenstown	"	5,197	5,893	11,090	7,532	8,340	15,872	0.0	0.0	0.0	0.0	0.0	0.0
Rome	"	11,189	17,516	28,705	17,385	14,887	32,272	812.4	26.1	838.4	659.0	20.7	679.7
San Francisco	"	91,482	94,393	185,875	78,004	80,932	158,936	424.3	3,286.4	3,710.7	815.0	2,667.5	3,482.5
Seattle	"	0	0	0	0	0	0	647.1	0.0	647.1	0.0	0.0	0.0
Seoul	"	148,327	144,932	293,259	156,750	155,018	311,768	9,764.0	8,898.9	18,662.9	8,164.4	10,842.4	19,006.8
Shanghai	"	59,309	50,236	109,545	45,800	40,558	86,358	2,144.4	602.4	2,746.8	1,481.2	579.6	2,060.8
Singapore	"	468,422	459,014	927,436	491,084	471,644	962,728	25,304.4	21,963.4	47,267.7	24,911.7	26,256.5	51,168.2
Subic Bay	"	0	0	0	0	0	0	0.0	9,506.4	9,506.4	0.0	9,961.1	9,961.1
Suva	"	960	1,015	1,975	6,123	7,083	13,206	4.2	4.3	8.5	9.4	11.1	20.5
Taipei	"	55,135	53,631	108,766	53,033	51,395	104,428	2,334.7	1,998.9	4,333.5	1,582.3	1,940.9	3,523.1
Tokyo	"	199,427	214,667	414,094	185,911	206,447	392,358	3,797.0	7,341.0	11,138.0	3,166.1	8,149.0	11,315.1
Toledo	"	0	0	0	0	0	0	476.7	0.0	476.7	354.1	0.0	354.1
Tongatapu	"	3,164	2,423	5,587	1,979	1,664	3,643	24.4	15.2	39.7	66.0	15.9	81.9
Toronto	"	3,696	3,741	7,437	0	0	0	189.7	140.0	329.6	0.0	0.0	0.0
Vancouver	"	35,866	38,100	73,966	35,069	37,184	72,253	635.9	1,317.9	1,953.8	762.6	2,046.4	2,809.0
Vienna	"	36,642	39,628	76,270	37,412	45,633	83,045	569.1	93.3	662.4	0.0	0.0	0.0
Washington	"	148	11	159	0	0	0	0.0	0.0	0.0	0.0	0.0	0.0
Wellington	"	113,381	116,606	229,987	109,658	112,712	222,370	584.6	274.2	858.7	420.3	122.4	542.7
Total	Sydney	4,194,555	4,343,277	8,537,832	3,913,562	4,045,003	7,958,565	173,403.8	145,980.9	319,384.7	160,767.6	148,940.1	309,707.7
Auckland	Townsville	0	0	0	8	0	8	0.0	0.0	0.0	0.0	0.0	0.0
Bombay	"	0	0	0	2	0	2	0.0	0.0	0.0	0.0	0.0	0.0
Frankfurt	"	0	0	0	0	12	12	0.0	0.0	0.0	0.0	0.0	0.0
London	"	0	0	0	0	8	8	0.0	0.0	0.0	0.0	0.0	0.0
Los Angeles	"	0	0	0	1	0	1	0.0	0.0	0.0	0.0	0.2	0.2
Manila	"	0	0	0	0	0	0	0.0	0.0	0.0	0.0	0.0	0.0
Singapore	"	0	0	0	163	205	368	0.0	0.0	0.0	0.0	0.2	0.2
Wellington	"	0	0	0	11	1	12	0.0	0.0	0.0	0.0	0.0	0.0
Total	Townsville	0	0	0	185	226	411	0.0	0.0	0.0	0.0	0.5	0.5
Abu Dhabi	Australia	14,820	7,505	22,325	0	0	0	536.6	756.8	1,293.3	0.0	0.0	0.0
Amsterdam	"	33,140	33,657	66,797	0	0	0	9,104.8	2,348.5	11,453.2	10,554.6	2,072.6	12,627.2
Apia	"	4,673	2,600	7,273	4,163	3,905	8,068	105.3	39.0	144.3	57.7	17.9	75.6

TABLE 5: SCHEDULED INTERNATIONAL TRAFFIC BY CITY PAIRS: Year ended June

Foreign Port	Australian Port	Passengers						Freight (tonnes)					
		2001			2002			2001			2002		
		Inbound	Outbound	Total	Inbound	Outbound	Total	Inbound	Outbound	Total	Inbound	Outbound	Total
Athens	Australia	29,804	30,550	60,354	24,984	24,625	49,609	328.2	175.9	504.1	281.3	146.1	427.4
Atlanta	"	0	0	0	0	0	0	4,345.4	5.3	4,350.7	1,184.0	0.0	1,184.0
Auckland	"	1,032,238	1,064,085	2,096,323	1,032,313	1,056,241	2,088,554	41,705.5	55,752.4	97,457.9	44,852.5	52,746.2	97,598.7
Bahrain	"	46,748	31,446	78,194	21,831	19,244	41,075	1,864.2	2,546.7	4,410.8	628.7	1,818.3	2,447.1
Bandar Seri Begawan	"	47,135	48,494	95,629	51,249	54,228	105,477	590.3	2,034.8	2,625.2	598.2	2,651.5	3,249.7
Bangkok	"	397,179	379,452	776,631	410,276	394,952	805,228	10,425.1	11,506.0	21,931.1	11,470.9	13,670.4	25,141.4
Beijing	"	35,187	32,245	67,432	37,220	32,690	69,910	385.6	608.2	993.8	246.1	695.0	941.1
Bombay	"	18,449	15,459	33,908	13,768	11,270	25,038	361.4	182.6	544.0	182.9	74.7	257.6
Buenos Aires	"	33,570	34,500	68,070	28,329	29,527	57,856	219.2	1,045.8	1,265.0	177.5	305.2	482.7
Cairo	"	15,428	15,727	31,155	14,203	14,646	28,849	369.1	296.7	665.8	336.1	364.4	700.4
Cebu	"	0	0	0	158	163	321	0.0	0.0	0.0	3.5	3.4	6.9
Chicago	"	8,532	9,883	18,415	10,497	10,024	20,521	7,140.3	0.1	7,140.4	7,863.7	0.0	7,863.7
Christchurch	"	375,746	377,560	753,306	354,675	357,706	712,381	9,503.4	7,699.0	17,202.4	7,085.5	7,076.5	14,162.0
Colombo	"	31,272	28,920	60,192	2,044	1,724	3,768	1,491.2	1,083.8	2,574.9	95.5	42.1	137.5
Denpasar	"	359,258	360,321	719,579	297,368	298,838	596,206	5,398.0	4,933.4	10,331.4	4,907.0	5,313.1	10,220.1
Dili	"	5,049	5,208	10,257	0	0	0	4.3	31.0	35.4	0.0	0.0	0.0
Dubai	"	97,434	97,075	194,509	99,983	104,339	204,322	3,764.1	4,875.8	8,639.9	3,549.3	6,125.0	9,674.3
Dunedin	"	26,714	26,064	52,778	31,245	31,304	62,549	0.0	0.0	0.0	0.0	0.0	0.0
Frankfurt	"	66,600	69,733	136,333	61,042	68,657	129,699	4,680.0	1,462.6	6,142.5	3,740.4	2,077.7	5,818.1
Fukuoka	"	2,402	3,614	6,016	1,337	1,674	3,011	34.1	0.2	34.3	0.0	0.0	0.0
Guam	"	10,646	10,930	21,576	10,675	10,720	21,395	2.9	27.9	30.9	0.3	39.1	39.4
Guangzhou	"	26,466	25,445	51,911	48,465	44,965	93,430	1,245.3	140.4	1,385.7	1,869.3	426.3	2,295.7
Hamilton	"	53,838	52,400	106,238	57,404	57,183	114,587	0.0	0.0	0.0	0.0	0.0	0.0
Hanoi	"	3,146	2,911	6,057	4,917	5,172	10,089	34.3	163.1	197.4	12.0	56.8	68.8
Harare	"	2,484	1,955	4,439	0	0	0	93.7	19.8	113.5	0.0	0.0	0.0
Ho Chi Minh City	"	27,696	28,614	56,310	37,824	36,445	74,269	669.3	455.9	1,125.2	883.7	446.2	1,329.8
Hong Kong	"	622,047	595,783	1,217,830	569,366	549,324	1,118,690	30,213.5	44,061.2	74,274.7	27,426.9	41,736.5	69,163.5
Honiara	"	6,671	6,802	13,473	0	0	0	153.0	122.3	275.3	0.0	0.0	0.0
Honolulu	"	77,323	70,962	148,285	71,523	73,470	144,993	1,508.4	1,466.9	2,975.2	1,634.5	2,423.0	4,057.5
Jakarta	"	68,375	66,653	135,028	69,543	70,881	140,424	384.5	2,197.2	2,581.8	832.4	1,975.2	2,807.6
Johannesburg	"	100,998	91,686	192,684	111,719	98,896	210,615	2,630.9	2,499.9	5,130.8	2,067.0	2,389.1	4,456.1
Karachi	"	0	0	0	0	0	0	0.0	0.2	0.2	0.0	26.0	26.0
Kota Kinabalu	"	0	476	476	0	0	0	0.0	0.0	0.0	0.0	0.0	0.0
Kuala Lumpur	"	503,987	483,602	987,589	453,391	446,811	900,202	17,289.9	18,198.8	35,488.7	16,908.0	18,449.8	35,357.7
Kuching	"	4,126	4,486	8,612	4,169	4,410	8,579	0.1	299.7	299.8	0.5	445.7	446.2
Kupang	"	1,299	1,479	2,778	0	0	0	3.4	4.0	7.4	0.0	0.0	0.0
Lae	"	575	0	575	0	0	0	0.0	0.0	0.0	0.0	0.0	0.0
Lahore	"	0	0	0	0	0	0	0.0	2.8	2.8	0.0	0.4	0.4
London	"	304,646	326,744	631,390	309,938	317,100	627,038	9,303.2	2,532.8	11,836.0	9,347.2	2,640.7	11,987.9
Los Angeles	"	591,041	589,466	1,180,507	477,165	479,443	956,608	26,903.1	16,021.9	42,925.0	23,453.5	12,187.0	35,640.5
Louisville	"	0	0	0	0	0	0	3,610.7	0.0	3,610.7	4,480.4	0.0	4,480.4
Luxembourg	"	0	0	0	0	0	0	4,801.5	0.0	4,801.5	4,337.7	0.0	4,337.7
Manila	"	70,208	69,921	140,129	65,940	64,733	130,673	1,364.5	2,392.6	3,757.1	1,538.8	2,093.9	3,632.7
Mauritius	"	14,562	14,267	28,829	13,822	13,324	27,146	288.4	682.4	970.7	380.1	630.3	1,010.4

TABLE 5: SCHEDULED INTERNATIONAL TRAFFIC BY CITY PAIRS: Year ended June

Foreign Port	Australian Port	Passengers						Freight (tonnes)					
		2001			2002			2001			2002		
		Inbound	Outbound	Total	Inbound	Outbound	Total	Inbound	Outbound	Total	Inbound	Outbound	Total
Milan	Australia	0	0	0	0	0	0	0.0	0.0	0.0	0.0	0.0	0.0
Mount Hagen	"	0	708	708	0	0	0	0.0	6.2	6.2	0.0	0.0	0.0
Nadi	"	101,845	102,033	203,878	151,770	151,176	302,946	3,499.4	3,337.3	6,836.7	4,083.9	3,757.0	7,840.9
Nagoya	"	96,926	93,015	189,941	92,678	92,256	184,934	1,542.1	1,547.6	3,089.7	1,151.6	1,884.3	3,035.9
Nauru	"	6,998	6,647	13,645	5,880	5,593	11,473	12.2	218.7	230.9	11.1	223.5	234.6
New Delhi	"	0	0	0	0	0	0	0.0	0.0	0.0	0.0	12.5	12.5
New York	"	35,561	39,358	74,919	22,420	21,465	43,885	9,108.9	764.9	9,873.9	4,719.6	407.3	5,126.9
Noumea	"	53,641	52,171	105,812	58,316	58,947	117,263	48.7	477.5	526.2	37.1	623.3	660.3
Osaka	"	245,634	232,882	478,516	201,652	190,751	392,403	4,202.6	8,513.3	12,715.9	2,568.3	6,403.5	8,971.8
Pago Pago	"	0	290	290	0	0	0	0.0	1.3	1.3	0.3	0.0	0.3
Palmerston	"	38,331	36,739	75,070	38,606	37,834	76,440	0.0	0.0	0.0	0.0	0.0	0.0
Papeete	"	3,531	3,778	7,309	334	3,468	3,802	7.7	121.4	129.1	0.0	10.7	10.7
Paris	"	30,887	34,914	65,801	28,427	32,238	60,665	1,180.2	311.2	1,491.5	688.7	113.4	802.1
Penang	"	0	0	0	0	0	0	0.0	19.8	19.8	278.8	259.4	538.3
Phuket	"	13,802	13,872	27,674	11,731	11,591	23,322	0.1	0.7	0.8	0.0	7.8	7.8
Port Moresby	"	76,213	77,045	153,258	72,122	71,473	143,595	1,228.0	2,900.0	4,128.0	1,691.5	2,729.6	4,421.1
Port Vila	"	35,136	34,856	69,992	30,420	30,095	60,515	172.0	375.8	547.8	134.3	355.6	489.9
Queenstown	"	7,264	8,434	15,698	10,285	11,011	21,296	0.0	0.1	0.1	0.0	0.0	0.0
Rome	"	36,699	43,643	80,342	43,358	40,593	83,951	1,695.7	88.6	1,784.4	1,363.1	86.1	1,449.2
San Francisco	"	91,482	94,393	185,875	89,797	93,190	182,987	437.1	3,293.5	3,730.6	938.4	3,539.1	4,477.5
Seattle	"	0	0	0	0	0	0	647.1	0.0	647.1	0.0	0.0	0.0
Seoul	"	169,964	161,537	331,501	183,165	178,320	361,485	10,395.8	10,538.7	20,934.4	8,631.6	12,369.2	21,000.9
Shanghai	"	60,024	54,381	114,405	45,800	40,558	86,358	2,580.4	811.3	3,391.7	1,481.2	579.6	2,060.8
Sharjah	"	0	0	0	0	0	0	0.0	0.0	0.0	0.0	3.0	3.0
Singapore	"	1,433,489	1,392,871	2,826,360	1,487,089	1,433,048	2,920,137	56,352.1	96,162.0	152,514.1	56,029.8	96,992.7	153,022.5
Subic Bay	"	0	0	0	0	0	0	0.0	9,506.4	9,506.4	0.0	9,961.1	9,961.1
Suva	"	960	1,015	1,975	6,123	7,083	13,206	4.2	4.3	8.5	9.4	11.1	20.5
Taipei	"	99,939	97,310	197,249	87,550	84,826	172,376	3,947.9	4,498.1	8,446.1	2,939.2	3,669.9	6,609.1
Tokyo	"	485,495	494,728	980,223	475,399	487,618	963,017	7,485.7	19,086.4	26,572.1	7,295.7	18,131.2	25,426.9
Toledo	"	0	0	0	0	0	0	1,433.0	0.0	1,433.0	368.6	0.0	368.6
Tongatapu	"	3,497	3,294	6,791	1,979	1,664	3,643	32.0	18.3	50.3	66.0	15.9	81.9
Toronto	"	4,225	4,386	8,611	4,346	4,520	8,866	284.7	200.0	484.6	223.7	556.2	779.9
Vancouver	"	37,610	42,618	80,228	35,069	37,184	72,253	680.6	1,495.3	2,175.9	762.6	2,046.4	2,809.0
Vienna	"	52,935	61,783	114,718	58,027	66,081	124,108	991.7	215.9	1,207.6	0.0	0.0	0.0
Washington	"	148	11	159	0	0	0	0.0	0.0	0.0	0.0	0.0	0.0
Wellington	"	210,770	214,594	425,364	209,186	213,686	422,872	911.5	757.9	1,669.4	643.7	290.0	933.7
Total	Australia	8,604,518	8,521,986	17,126,504	8,254,075	8,194,903	16,448,978	311,738.3	353,946.9	665,685.2	289,105.9	346,205.6	635,311.5

Note: In interpreting the figures in this table, reference should be made to Explanatory Notes - paragraph 8 in particular.

**TABLE 6 : INTERNATIONAL AIRLINES
OWN STOPOVER REVENUE PASSENGERS,
AUSTRALIAN CITY PAIRS**

YEAR ENDED JUNE 2002

City Pair Route	Total Passengers
Brisbane/Sydney	46,474
Melbourne/Sydney	31,300
Brisbane/Cairns	2,951
Cairns/Darwin	1,418
Adelaide/Melbourne	685
TOTAL	82,828

Notes:

1. Own Stopover Revenue Passengers : The aggregate of revenue passengers uplifted at one Australian airport and discharged (excluding transit passengers) at another Australian airport by the same foreign registered international airline on which they entered or left Australia.
2. City Pair Route represents the aggregation of passengers travelling in both directions.
3. This data are supplementary to the information previously supplied to the Department by most international airlines. Tables 1-5 cover only those passengers travelling to/from overseas airports. The inclusion of this additional data provides a more complete coverage of international airline activity.

TABLE 7: TOTAL AIRCRAFT MOVEMENTS AT AUSTRALIAN INTERNATIONAL AIRPORTS BY AIRCRAFT TYPES: Year ended June 2002

Airport	Aircraft Types																		
	Passenger/Mixed														Freighters				All Types
	310	320	330	340	737	747	74M	757	767	777	M11	D10	F28	146	72F	74F	76F	M1F	
Adelaide			340	74	4	523			490	318									1,749
Brisbane	636		1,170		4,251	3,317	167		5,013	1,728	558			3		2			16,845
Broome														6					6
Cairns	65		532		206	1,872	182		2,110					1,193					6,160
Coolangatta					677														677
Darwin			248		454	42	168	134	933	2						4			1,985
Melbourne			1,085	633	4,112	6,938	1		4,948	2,745	924					652		285	22,323
Newcastle					110														110
Norfolk Island					209														209
Perth		42	1,238	430	637	497		4	2,878	2,699			62			42			8,529
Sydney	352	22	1,579	1,929	6,350	19,914	351		9,820	3,552	575				440	855	52	718	46,509
Townsville									77										77
Australia	1,053	64	6,192	3,066	17,010	33,103	869	138	26,269	11,044	2,057	62	1,196	6	440	1,555	52	1,003	105,179

% of All Types	1.0	0.1	5.9	2.9	16.2	31.5	0.8	0.1	25.0	10.5	2.0	0.1	1.1	0.0	0.4	1.5	0.0	1.0	100.0
----------------	-----	-----	-----	-----	------	------	-----	-----	------	------	-----	-----	-----	-----	-----	-----	-----	-----	-------

NOTE:

These figures only cover scheduled operations of the airlines listed in this publication. Charter/ferry operations are not included.

These figures are available electronically for January 2001 onwards. Prior to this, aircraft type data is not readily accessible.

Aircraft Types (all series)

Airbus	310	320	330	340															
Boeing	737	747	74M	757	767	777	72F	74F	76F										
McDonnell Douglas	M11	D10	M1F																
Fokker	F28																		
BAE	146																		
de Havilland	DH8																		