



Australian Government

Department of Infrastructure, Transport,  
Regional Development and Local Government  
Bureau of Infrastructure, Transport and Regional Economics



# bitre

## AVIATION STATISTICS

### International Scheduled Air Transport 2008

IAM 127

© Commonwealth of Australia

Canberra

May 2009

ISSN 1324-5074

This work is copyright and the data contained in this publication should not be reproduced or used in any form without acknowledgement.

Inquiries

Should you require additional information about the statistics contained in this publication, please contact Mr Mano Manoranjan in Canberra by telephone (02) 6274 7790 or by facsimile (02) 6274 7727 or write to:

Aviation Statistics, Bureau of Infrastructure, Transport and Regional Economics  
Department of Infrastructure, Transport, Regional Development and Local Government  
GPO Box 594  
Canberra ACT 2601

Electronic mail: [AVSTATS@infrastructure.gov.au](mailto:AVSTATS@infrastructure.gov.au)

Web site: <http://www.bitre.gov.au/info.aspx?NodeId=49>

# CONTENTS

---

Explanatory Notes ..... 4-6

Data Issues and Airlines Commencing/Withdrawing Services.....7

Highlights ..... 8-15

Detailed Annual Tables

- 1. Scheduled International Air Traffic to and from Australia ..... 16-18
- 2. Scheduled Operator Market Shares and Growth..... 19-23
- 3. Airline Passenger Capacity and Utilisation to and from Australia by Operator ... 24-27
- 4. Australian International Airport Scheduled Traffic and Aircraft Movements .....28
- 5. Scheduled International Passengers and Freight by City Pairs ..... 29-36
- 6. International Airlines Own Stopover Revenue Passengers, Australian City Pairs ....37
- 7. Total Aircraft Movements at Australian International Airports by Aircraft Types .....38

# EXPLANATORY NOTES

---

## INTRODUCTION

1. This publication continues the series of publications on a calendar year basis presenting statistical information on the scheduled operations of international airlines operating into/out of Australia.
2. The figures in this publication were obtained from reports submitted by scheduled international carriers and are the best available at the time of publication.

## COVERAGE

3. These statistics show uplift/discharge data – These data detail, by direction, the revenue traffic between the actual points of uplift and discharge within each flight, aggregated for all flights within the period. It shows the movement of traffic between two airports not necessarily directly connected but within the same flight number. Typically, flight numbers change when an aircraft reaches its home country. This means that uplift/discharge data for the port in the operator's home country are likely to be overstated by traffic whose origin/destination point is beyond that port. For example, uplift/discharge traffic reported in this publication as Singapore could include traffic whose origin/destination is Europe.
4. These statistics cover revenue traffic carried by the operators of scheduled regular public international air transport services only and do not include charter traffic.
5. Some airlines (generally, dedicated freighter operators) operate scheduled services into Australia but operate non-scheduled services out of Australia and therefore outbound activity is not recorded in this data collection.

## PRODUCTION AND INTERPRETATION

6. Tables 1 and 2 show the country of the relevant uplift or discharge port served by that airline. For example, traffic uplifted/discharged between Sydney and Singapore by British Airways would be shown as Singapore traffic in Tables 1 and 2.
7. Table 3 shows figures for the country of service (or route) for each airline and therefore may not equate to the data in Tables 1 and 2. For example, the British Airways UK service identified in Table 3 could include passengers uplifted or discharged in Singapore or Thailand as well as the UK; these passengers would be shown individually under those countries in Tables 1 and 2. The difference in treatment of data between Tables 1 and 2 and Table 3 is necessary in order to work out a meaningful Seat Utilisation figure for Table 3.

Figures shown in Table 3 may include total traffic into and out of Australia for airlines that fly through Australia (also necessary in order to work out a meaningful Seat Utilisation figure). Therefore, figures in Table 3 may not equate to figures in Tables 1 and 2. For example, passengers carried by Qantas Airways from New Zealand via Australia to the UK will be included in Table 3 but will not be included in Tables 1 or 2 as these passengers were not uplifted/discharged in Australia.

8. Table 5 – shows uplift/discharge passenger and freight data for city pairs with same flight number international flight connections.
9. Where figures have been rounded, discrepancies may occur between sums of component items and totals, and in percentage changes which are derived from figures prior to rounding.
10. Published figures may be revised where figures missing at the time of publication are received or misreporting/miscalculation necessitates revisions.

## DEFINITIONS

11. The following definitions have been used in this publication:
- (a) Aircraft Movement: A landing or a take off.
  - (b) Freight: The aggregate of all revenue freight uplifted.
  - (c) Inbound: Inbound to Australia/Australian international airport.
  - (d) Mail: The aggregate of all mail uplifted.
  - (e) Outbound: Outbound from Australia/Australian international airport.
  - (f) Revenue Passengers: please refer to paragraph 12.
  - (g) Seat Utilisation: The ratio of passengers carried to seats available, expressed as a percentage.
  - (h) Seats Available: Generally based on standard aircraft configuration, the aggregate of seats available on all flights operated over a particular service.
  - (i) Services: Scheduled flights over authorised routes which are listed according to the main ports involved.

## COMPARABILITY OF DATA OVER TIME

12. Revenue Passengers:
- For July 2000 and onwards: All passengers paying any fare (frequent flyer redemption passengers are regarded as revenue passengers). In most cases, Revenue Passengers will now include all passengers excluding Free Of Charge passengers and positioning crew.
  - To December 1999: The aggregate of all passengers paying 25% or more of the standard air fare (as defined by ICAO).
  - January 2000 to June 2000: Transition period.

The Revenue Passenger definition change could result in approximately a three per cent increase in passenger numbers over a full period (month or year).

13. Country and City data – reporting of Uplift/Discharge data by Qantas Airways:
- Prior to January 2003: Uplift/Discharge within Qantas Airways' international network.
  - For January 2003 and onwards: Uplift/Discharge within flight number – as per the standard definition.

For example, what was previously reported as Adelaide to London (no direct services between these two cities) will now be reported as either Adelaide to Singapore or Melbourne/Sydney to London.

This change has been introduced in order to make the data comparable across all airlines operating services to/from Australia.

The effect of this change – comparing data under the two methods of reporting:

- Country of Port data (Tables 1 & 2) – There will be a shift in traffic to countries such as Singapore which are used as hubs and away from countries such as France, Germany and Italy which previously received traffic channelled through hubs. The total volume of traffic is not affected.
- Country of Service data (Table 3) – no change, as the Uplift/Discharge definition is not applicable to classifying the country of service.
- Australian International Airports (Table 4) – there may be a shift of traffic to the major airports.
- City Pairs (Table 5) – There will be a shift in traffic to cities such as Singapore which are used as hubs and away from cities such as Paris, Frankfurt and Rome which previously received traffic channelled through hubs. The total volume of traffic is not affected. Prior to the change, statistics reported for city pairs without “same flight number” international flight connections mainly reflected carriage on interconnecting international services by Qantas Airways. That traffic should have been interpreted as increasing the volume of traffic between the primary international ports rather than as an indicator of traffic volumes between ports without “same flight number” international flight connections. It should be noted however, that there was no double counting of traffic.

14. Country of Service classification by Qantas Airways:

- For July 2002 and onwards: based on the foreign country where same flight number services commence or cease – as per the standard definition. For example, Sydney-Denpasar-Singapore services would be classified as Country of Service = Singapore.
- Prior to July 2002: based on Qantas classification – this mainly affected Indonesia and Singapore Countries of Service. For example, Sydney-Denpasar-Singapore services were classified as Country of Service = Indonesia.

15. Airline data – Reporting of code share services:

Reporting of traffic split by airline code for code share arrangements was discontinued as of June 2000. For July 2000 and onwards, ALL traffic carried is reported under the operating airline regardless of code share arrangements.

Monthly airline market share figures for July 2001 onwards will be comparable with the same month in the previous year. However, these figures may not be comparable with monthly data prior to July 2000.

SYMBOLS AND OTHER USAGE

- nil or zero
- .. not applicable

INDEMNITY STATEMENT

The Bureau of Infrastructure, Transport and Regional Economics has taken due care in preparing the information contained in this publication. However, noting that data have been provided by third parties, the Commonwealth gives no warranty as to the accuracy, reliability, fitness for purpose, or otherwise of the information.

## DATA ISSUES

---

<b>Air Vanuatu</b>	Traffic carried under code share arrangements may not be included for July 2000 to June 2006. No mail data received for August 2007 and onwards.
<b>Austrian Airlines/Lauda Air</b>	No outbound freight data for September 2000 onwards. No inbound freight data for April 2001 onwards. Service ceased March 2007.
<b>Jetstar</b>	Freight data for services to/from Singapore is not available prior to July 2007. No mail data prior to November 2007.
<b>Our Airlines</b>	No data received for August 2008 and onwards.
<b>Vietnam Airlines</b>	No data received for inbound operations to Sydney for November 2008. No data received for inbound operations to Sydney for August 2002 to May 2004, July 2004 to November 2004, January 2005 to March 2005 and May 2005. Data for Outbound operations have been received for July 2003 onwards.

## AIRLINES COMMENCING/WITHDRAWING SERVICES DURING 2008

---

Commencing:

OzJet

SkyAirWorld

Withdrawing:

Freedom Air International

Martinair Holland

Silk Air

# HIGHLIGHTS – YEAR ENDED DECEMBER 2008

---

- Fifty-four international scheduled airlines operated services to/from Australia during the year (includes 6 dedicated freight airlines but excludes airlines operating only via code share arrangements).
- International scheduled passenger traffic in 2008 was 23.465 million compared to 22.776 million in 2007 – an increase of 3.0 per cent.
- Chart I shows total passenger traffic for the years 1998 to 2008. Over this period, 2002 and 2003 were the only years that recorded a decrease in traffic compared to the previous year. Passenger traffic in 2002 was affected by the terrorist attacks on the USA in September 2001 and the collapse of Ansett International (also in September 2001). Passenger traffic in 2003 was affected by the SARS crisis (April, May and June 2003 in particular) and the war in Iraq.
- 2008 has recorded the highest level of passenger traffic ever carried in a calendar year. With the exception of March 2006, September 2008 and November 2008, each month since September 2003 has recorded the highest level of passenger traffic when compared to the same month in any previous year. Chart II compares monthly passenger traffic for 2008 with monthly passenger traffic for 2007.
- **Airline shares:** Chart III shows the airline market shares in terms of passenger carriage for the top ten airlines for 1998, 2003 and 2008. In the latest year, Qantas Airways had the largest share of the market with 24.7 per cent followed by Singapore Airlines with 11.6 per cent, Air New Zealand with 9.5 per cent, Emirates with 7.0 per cent and Jetstar with 6.0 per cent.
- Compared to 1998, Qantas Airways' share has decreased by 11.7 percentage points, Singapore Airlines' share has increased by 3.4 percentage points, Air New Zealand's share has decreased by 0.1 percentage point, Emirates' share has increased by 6.6 percentage points (commenced operations to/from Australia in December 1996) and Jetstar did not commence international operations until December 2005. The decrease in share for the Qantas group (Qantas and Jetstar in 2008 compared to Qantas in 1998) was 5.8 percentage points.
- **Australian airline share:** The share of passenger traffic accounted for by Australian designated airlines has decreased from 40.5 per cent in 1998 (Qantas Airways, Ansett International, Flight West and National Jet Systems) to 34.1 per cent in 2003 (Qantas Airways and Australian Airlines) and to 31.9 per cent in 2008 (Qantas Airways, Jetstar, Pacific Blue (excluding services operated under New Zealand designation), Airnorth, OzJet and SkyAirWorld).
- **Seats and seat utilisation:** Total seats made available on international scheduled operations in 2008 totalled 31.526 million – an increase of 5.7 per cent compared to 2007 and an increase of 5.3 per cent compared to 2006. The overall seat utilisation percentage had increased from 72.9 per cent in 2006 to 77.5 per cent in 2007 but decreased to 75.6 per cent in 2008.
- **Low Cost Carrier (LCC) share:** The share of passenger traffic accounted for by LCCs has increased strongly over the last few years. In 2008, AirAsia X, Freedom Air International, Jetstar, Pacific Blue, Polynesian Blue and Tiger Airways together accounted for 11.3 per cent. This compares to the LCC share of 10.0 per cent in 2007, 6.4 per cent in 2006 and 4.5 per cent in 2005. The increase in 2008 comes despite Freedom Air International's

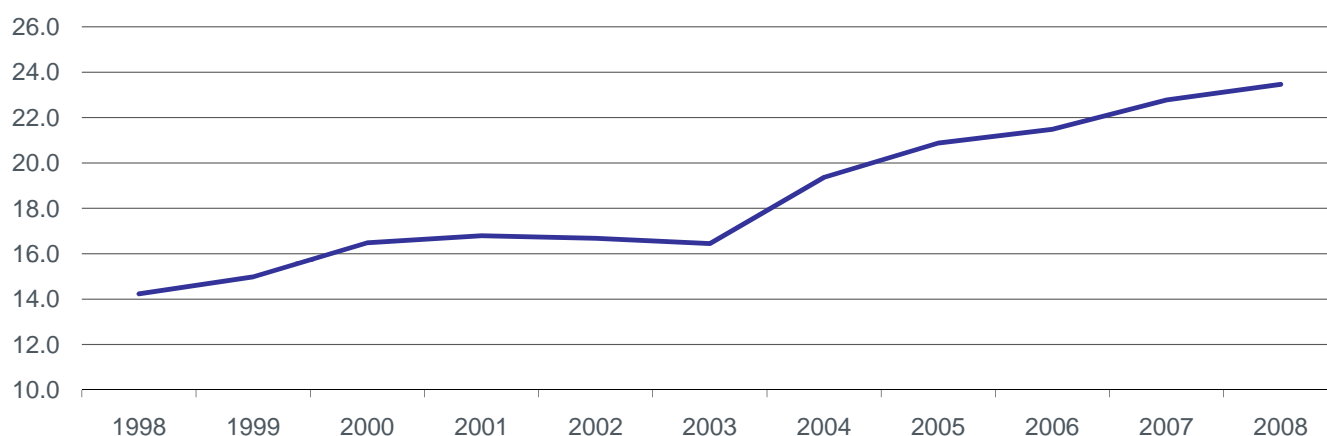


operations being taken over by Air New Zealand for April 2008 and onwards and is due to increased carriage by AirAsiaX, Jetstar and Pacific Blue.

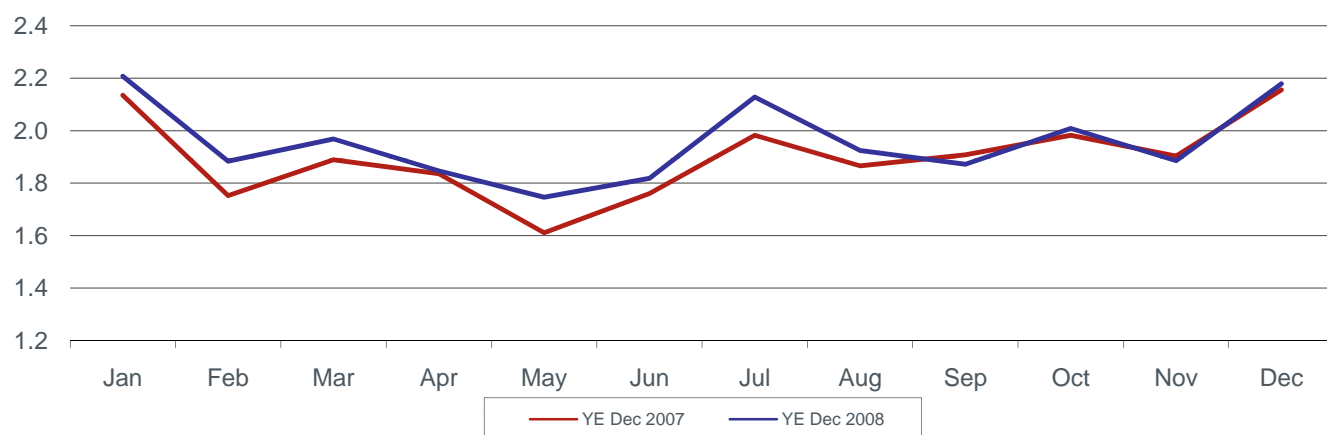
- **Freight:** International scheduled air freight traffic in 2008 decreased by 0.9 per cent over 2007 to 755 235 tonnes. Inbound freight traffic has decreased by 0.4 per cent and outbound freight traffic has decreased by 1.6 per cent. Inbound freight has decreased dramatically in the last few months of 2008 with November recording a month on month decrease of 18.9 per cent and December 22.1 per cent.
- **Dedicated freighters:** In 2008, scheduled dedicated freighter operations accounted for 27.4 per cent of scheduled inbound air freight to Australia, 13.3 per cent of scheduled outbound air freight from Australia and 21.7 per cent of total scheduled air freight. Note that some freighters do not pick up freight in Australia – this accounts for the difference in inbound and outbound percentages. There are some smaller scheduled dedicated freighter operators who are not covered in these figures.
- **Traffic On Board Airport Traffic:** Table VI on page 13 shows Traffic On Board passenger movements, flights and operated seats at Australian international airports. All traffic is shown against the first Australian airport for arrivals to Australia and the last Australian airport for departures from Australia. Movements between Australian airports are not accounted for.
- Seat utilisation at all of the capital city airports other than Perth has decreased in 2008 compared to 2007. Adelaide recorded the highest rate at 79.4 per cent. Of the 31.526 million seats operated to/from Australia, Sydney accounted for 45.5 per cent followed by Melbourne with 18.8 per cent and Brisbane with 17.4 per cent.
- **Traffic On Board Country:** Table VII on page 14 shows Traffic On Board passenger movements, flights and operated seats between Australia and countries with non-stop air service connections.
- New Zealand, Singapore, Hong Kong, Thailand and USA were the top five countries in terms of traffic on board passenger movements in 2008. Seat utilization was highest for India with 84.1 per cent followed by South Africa with 82.9 per cent and Singapore with 80.6 per cent.
- **Hubs for passenger traffic:** Table VIII on page 14 shows Traffic On Board passenger movements, flights and operated seats between Australia and the top twenty-five international cities with non-stop air service connections.
- In 2008, 20.8 per cent of the passenger movements to/from Australia were either to/from or via Singapore. Auckland was the next largest hub accounting for 14.2 per cent followed by Hong Kong which accounted for 9.4 per cent.
- **Traffic On Board Region:** Page 15 is a diagrammatic representation of Traffic On Board passenger movements, flights and operated seats by region. The region is based on international cities with non-stop air service connections with Australia. In 2008, 37.6 per cent of the 31.526 million seats operated to/from Australia were either to/from or via South-East Asia. New Zealand had 23.7 per cent of the total followed by North-East Asia with 20.7 per cent.
- The information on Traffic On Board is derived from the uplift/discharge data used to produce the main Tables in this publication.

# YEAR ENDED DECEMBER 2008

**Chart I Total International Passengers Carried (millions) - Years ended December 1998 to 2008**



**Chart II Total International Passengers Carried (millions) - By Month**



**Table I International Passengers by Uplift/Discharge City Pairs (a)**

Foreign Port	Australian Port	Year ended December 2006	Year ended December 2007	Year ended December 2008	% of Total	% Change 2008/07
Auckland	Sydney	1 190 630	1 231 395	1 225 576	5.2%	-0.5%
Singapore	Sydney	977 456	999 076	1 084 990	4.6%	8.6%
Singapore	Perth	818 436	929 257	956 318	4.1%	2.9%
Hong Kong	Sydney	868 789	904 265	915 172	3.9%	1.2%
Singapore	Melbourne	831 338	838 060	867 986	3.7%	3.6%
Auckland	Brisbane	764 201	814 859	826 870	3.5%	1.5%
Singapore	Brisbane	697 100	680 320	743 133	3.2%	9.2%
Auckland	Melbourne	661 491	703 323	710 662	3.0%	1.0%
Bangkok	Sydney	551 511	626 129	637 679	2.7%	1.8%
Christchurch	Sydney	517 068	536 949	541 545	2.3%	0.9%
Top 10 City Pairs		7 878 020	8 263 633	8 509 931	36.3%	3.0%
Other City Pairs		13 609 064	14 512 046	14 955 325	63.7%	3.1%
ALL CITY PAIRS		21 487 084	22 775 679	23 465 256	100.0%	3.0%

**Table II International Freight (tonnes) by Uplift/Discharge City Pairs (a)**

Foreign Port	Australian Port	Year ended December 2006	Year ended December 2007	Year ended December 2008	% of Total	% Change 2008/07
Auckland	Sydney	59 845	58 955	57 736	7.6%	-2.1%
Singapore	Melbourne	56 558	51 944	52 290	6.9%	0.7%
Hong Kong	Sydney	43 733	45 521	45 355	6.0%	-0.4%
Singapore	Sydney	36 333	37 351	39 399	5.2%	5.5%
Hong Kong	Melbourne	30 835	32 107	35 572	4.7%	10.8%
Singapore	Perth	32 455	33 952	33 293	4.4%	-1.9%
Auckland	Melbourne	32 963	31 431	27 887	3.7%	-11.3%
Singapore	Brisbane	23 984	24 419	26 349	3.5%	7.9%
Kuala Lumpur	Sydney	21 098	26 375	21 722	2.9%	-17.6%
Kuala Lumpur	Melbourne	17 316	22 129	20 941	2.8%	-5.4%
Top 10 City Pairs		355 122	364 184	360 544	47.7%	-1.0%
Other City Pairs		391 606	397 665	394 691	52.3%	-0.7%
ALL CITY PAIRS		746 728	761 848	755 235	100.0%	-0.9%

**Table III International Passengers by Uplift/Discharge Country (a)**

Country	Year ended December 2006	Year ended December 2007	Year ended December 2008	% of Total	% Change 2008/07
New Zealand	4 915 086	5 154 498	5 133 323	21.9%	-0.4%
Singapore	3 691 318	3 860 871	4 095 673	17.5%	6.1%
Hong Kong (SAR)	1 741 724	1 782 331	1 969 020	8.4%	10.5%
USA	1 665 593	1 731 852	1 685 284	7.2%	-2.7%
Thailand	990 209	1 359 629	1 364 246	5.8%	0.3%
United Arab Emirates	931 135	1 153 420	1 267 385	5.4%	9.9%
Japan	1 569 870	1 472 515	1 253 627	5.3%	-14.9%
Malaysia	1 101 027	1 148 076	1 145 128	4.9%	-0.3%
Indonesia	479 432	632 054	824 499	3.5%	30.4%
UK	765 395	789 046	754 088	3.2%	-4.4%
Top 10 Countries	17 850 789	19 084 292	19 492 273	83.1%	2.1%
Other Countries	3 636 295	3 691 387	3 972 983	16.9%	7.6%
ALL COUNTRIES	21 487 084	22 775 679	23 465 256	100.0%	3.0%

**Table IV International Passenger Traffic through Australian International Airports (a)**

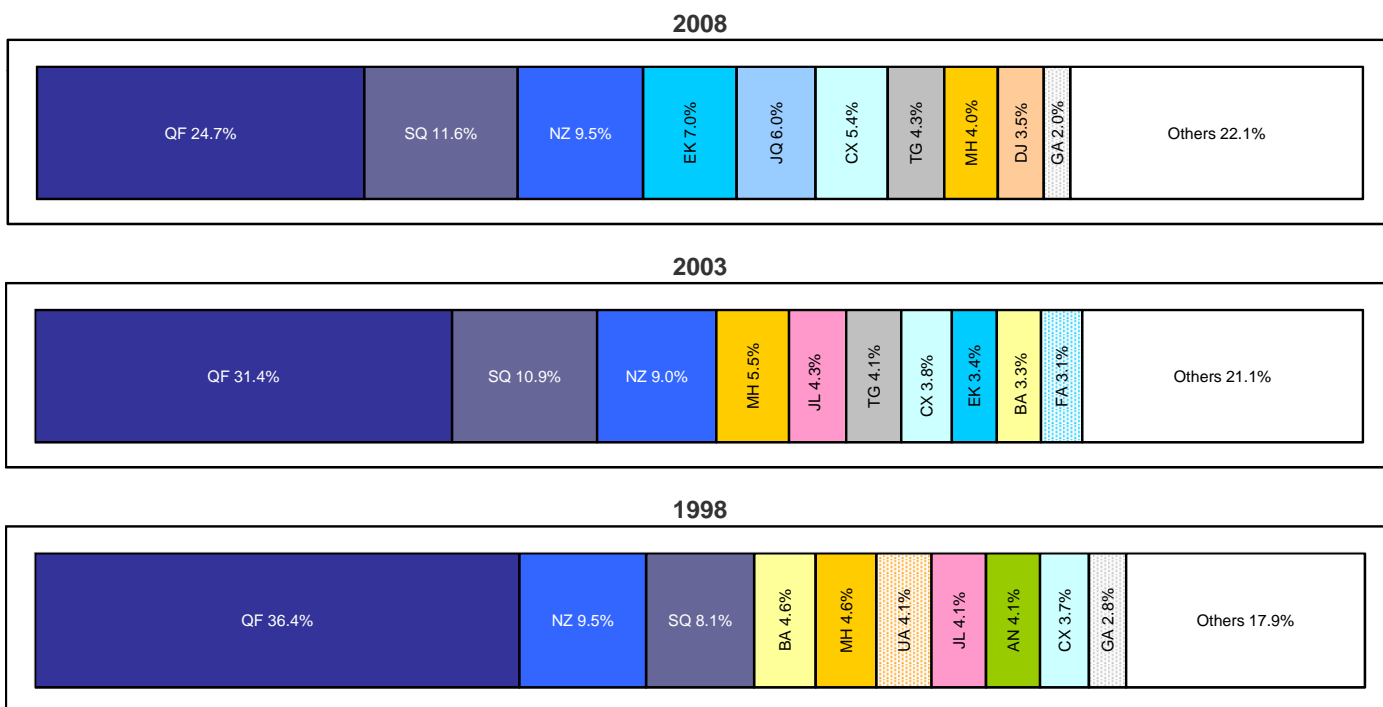
Airport	Year ended December 2006	Year ended December 2007	Year ended December 2008	% of Total	% Change 2008/07
Sydney	9 865 970	10 378 240	10 548 928	45.0%	1.6%
Melbourne	4 291 290	4 565 084	4 732 544	20.2%	3.7%
Brisbane	3 763 314	3 921 752	4 032 988	17.2%	2.8%
Perth	2 034 877	2 373 568	2 533 022	10.8%	6.7%
Cairns	791 709	702 048	595 461	2.5%	-15.2%
Adelaide	400 489	455 149	479 679	2.0%	5.4%
Gold Coast/Coolangatta	193 441	210 762	339 144	1.4%	60.9%
Darwin	126 828	151 319	187 837	0.8%	24.1%
Norfolk Island	19 166	17 277	14 411	0.1%	-16.6%
Christmas Island (b)	..	480	1 242	0.0%	158.8%
ALL AIRPORTS	21 487 084	22 775 679	23 465 256	100.0%	3.0%

(a) Please refer to Explanatory notes - paragraphs 3 & 13 in particular.

(b) Scheduled services recommenced in December 2007 and ceased in May 2008.

Note that there were some freighter operations in Townsville in March, April and May 2006 but no scheduled passenger operations.

**Chart III International Passengers by Major Airlines - Top 10 in each year - Years ended December**



AN - Ansett International  
 BA - British Airways  
 CX - Cathay Pacific Airways  
 DJ - Pacific Blue  
 EK - Emirates

FA - Freedom Air International  
 GA - Garuda Indonesia  
 JL - Japan Airlines  
 JQ - Jetstar  
 MH - Malaysia Airlines

NZ - Air New Zealand  
 QF - Qantas Airways  
 SQ - Singapore Airlines  
 TG - Thai Airways  
 UA - United Airlines

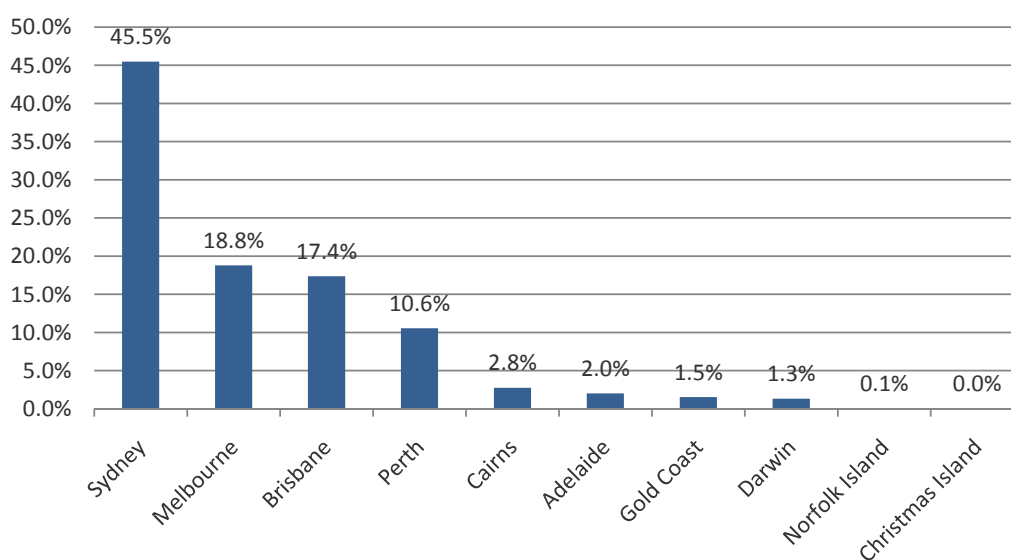
**Table V Summary Statistics**

	Year ended December 2006	Year ended December 2007	Year ended December 2008	Growth compared to	
				2007	2006
Passengers carried	21 487 084	22 775 679	23 465 256	3.0%	9.2%
Freight (tonnes)	746 728	761 848	755 235	-0.9%	1.1%
Mail (tonnes)	32 031	36 288	39 031	7.6%	21.9%
Available Seats	29 930 922	29 834 968	31 525 997	5.7%	5.3%
Flights	118 118	120 641	128 758	6.7%	9.0%
Aircraft Movements	131 550	134 530	143 342	6.6%	9.0%

**Table VI Traffic on Board Passenger Movements, Flights and Seats at Australian International Airports - Scheduled International Passenger Services**

First/Last port of call *	Year	No. of Flights	Passenger Movements	Seats	Seat Utilisation %
Adelaide	2007	2 251	480 296	586 909	81.8%
	2008	2 467	507 695	639 544	79.4%
Brisbane	2007	21 433	3 862 192	5 074 932	76.1%
	2008	23 583	3 980 941	5 477 904	72.7%
Cairns	2007	5 190	737 195	953 762	77.3%
	2008	4 999	632 791	872 493	72.5%
Christmas Island	2007	8	480	1 136	42.3%
	2008	44	1 242	5 960	20.8%
Darwin	2007	2 231	250 658	364 505	68.8%
	2008	2 692	280 471	420 756	66.7%
Gold Coast/Coolangatta	2007	1 684	210 553	275 348	76.5%
	2008	2 443	352 274	486 593	72.4%
Melbourne	2007	20 282	4 479 519	5 537 528	80.9%
	2008	22 015	4 664 082	5 925 100	78.7%
Norfolk Island	2007	208	17 277	29 145	59.3%
	2008	203	14 411	27 386	52.6%
Perth	2007	11 943	2 373 264	3 137 802	75.6%
	2008	13 380	2 534 308	3 331 923	76.1%
Sydney	2007	50 522	10 725 352	13 873 901	77.3%
	2008	52 160	10 854 997	14 338 338	75.7%
Total	2007	115 752	23 136 786	29 834 968	77.5%
	2008	123 986	23 823 212	31 525 997	75.6%

**Chart IV Share of Operated Seats at Australian International Airports - 2008**



\* First port of call for arrivals to Australia or last port of call for departures from Australia. The information on Traffic On Board is derived from the uplift/discharge data used to produce the main Tables in this publication. The figures above include some estimates and adjustments. The data shown here covers non-stop international connections only - it does not include movements between Australian airports. Please see notes on page 14 as well.

**Table VII Traffic on Board Passenger Movements, Flights and Seats on Non-Stop Passenger Services By Country - 2008**

Country *	No. of		Seats	Seat Utilisation %
	Flights	Passengers		
New Zealand	37 784	5 463 480	7 473 426	73.1%
Singapore	19 470	4 953 400	6 144 243	80.6%
Hong Kong (SAR)	10 031	2 228 051	2 876 932	77.4%
Thailand	6 773	1 751 750	2 213 522	79.1%
USA	6 224	1 664 365	2 109 177	78.9%
Japan	5 734	1 264 354	1 763 478	71.7%
Malaysia	5 108	1 145 128	1 559 378	73.4%
Indonesia	5 635	829 344	1 066 802	77.7%
United Arab Emirates	3 759	746 871	996 058	75.0%
China	3 458	670 397	913 306	73.4%
Fiji	3 461	594 511	826 468	71.9%
Korea	2 166	484 604	657 911	73.7%
South Africa	1 055	277 385	334 462	82.9%
Vietnam	1 119	254 959	340 445	74.9%
Taiwan	1 064	226 329	309 914	73.0%
Philippines	960	197 883	259 558	76.2%
Papua New Guinea	3 248	186 457	334 847	55.7%
New Caledonia	1 064	157 321	200 588	78.4%
Canada	714	148 220	196 881	75.3%
Brunei	1 396	147 174	261 070	56.4%
Vanuatu	1 254	130 184	212 688	61.2%
Mauritius	333	71 328	99 046	72.0%
India	314	63 319	75 277	84.1%
Solomon Islands	869	40 766	99 438	41.0%
Tahiti	202	36 755	59 388	61.9%
Western Samoa	331	35 828	59 580	60.1%
Tonga	208	22 565	37 440	60.3%
Guam	218	22 532	33 572	67.1%
Argentina	34	7 953	11 102	71.6%
<b>Total</b>	<b>123 986</b>	<b>23 823 212</b>	<b>31 525 997</b>	<b>75.6%</b>

**Table VIII Traffic on Board Passenger Movements, Flights and Seats on Non-Stop Passenger Services By City Top Twenty-Five Based on Passengers - 2008**

First/Last port of call *	No. of		Seats	Seat Utilisation %
	Flights	Passengers		
Singapore	19 470	4 953 400	6 144 243	80.6%
Auckland	20 250	3 386 365	4 572 744	74.1%
Hong Kong	10 031	2 228 051	2 876 932	77.4%
Bangkok	6 307	1 630 550	2 070 246	78.8%
Christchurch	9 877	1 257 902	1 772 462	71.0%
Kuala Lumpur	5 108	1 145 128	1 559 378	73.4%
Los Angeles	3 750	1 100 497	1 344 120	81.9%
Tokyo	4 250	953 577	1 314 579	72.5%
Denpasar	4 437	697 308	879 166	79.3%
Wellington	5 461	594 964	794 200	74.9%
Nadi	3 461	594 511	826 468	71.9%
Dubai	2 954	575 718	798 290	72.1%
Seoul	2 166	484 604	657 911	73.7%
Shanghai	2 164	412 591	562 714	73.3%
San Francisco	1 245	312 211	438 373	71.2%
Johannesburg	1 055	277 385	334 462	82.9%
Ho Chi Minh City	1 119	254 959	340 445	74.9%
Honolulu	1 229	251 657	326 684	77.0%
Osaka	1 103	232 419	333 672	69.7%
Taipei	1 064	226 329	309 914	73.0%
Manila	960	197 883	259 558	76.2%
Port Moresby	3 248	186 457	334 847	55.7%
Abu Dhabi	805	171 153	197 768	86.5%
Noumea	1 064	157 321	200 588	78.4%
Vancouver	714	148 220	196 881	75.3%
Others	10 694	1 392 053	2 079 352	66.9%
<b>Total</b>	<b>123 986</b>	<b>23 823 212</b>	<b>31 525 997</b>	<b>75.6%</b>

\* First country/port of call for departures from Australia or last country/port of call for arrivals to Australia.

The information on Traffic On Board is derived from the uplift/discharge data used to produce the main Tables in this publication.

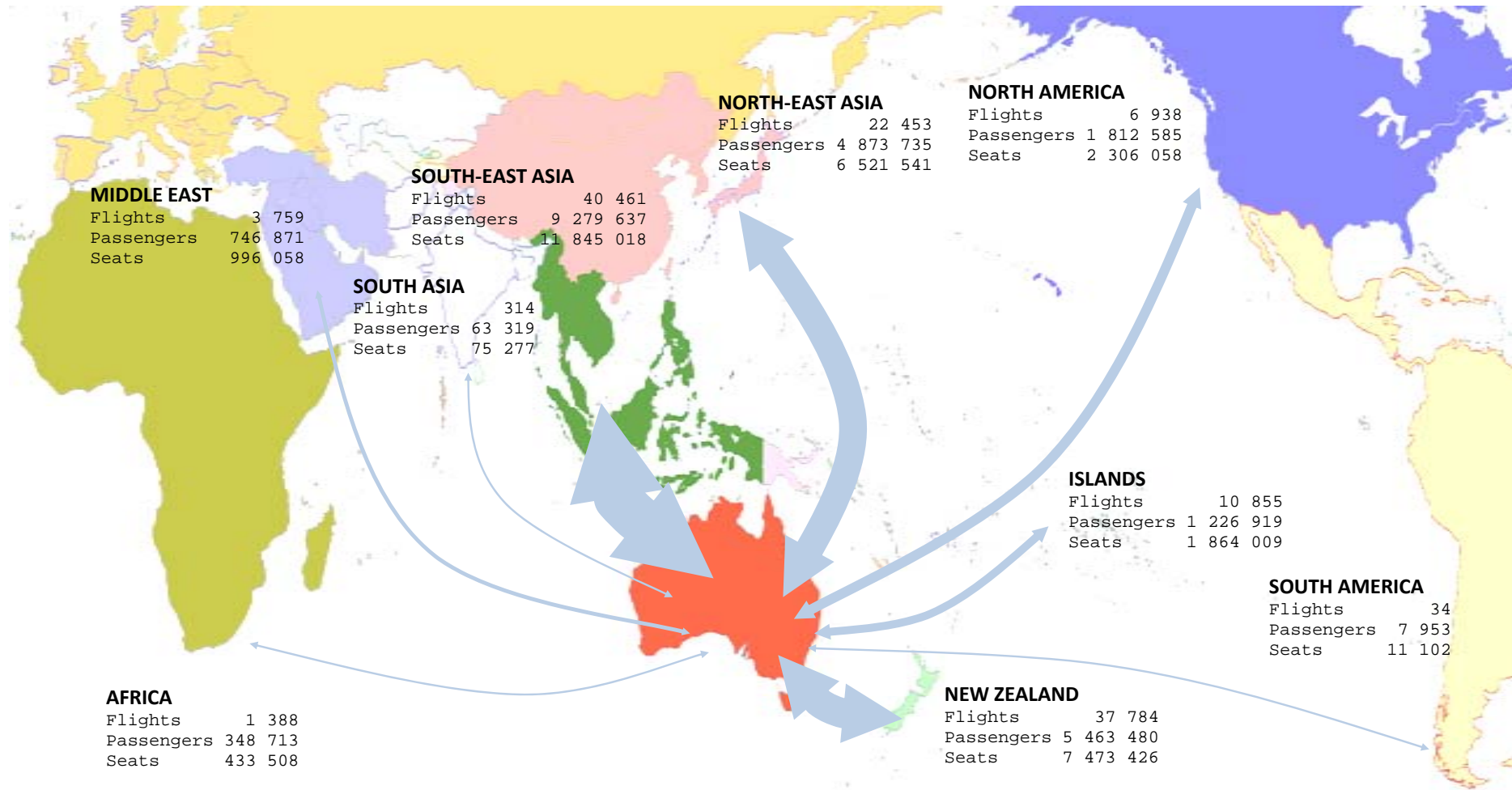
The figures above include some estimates and adjustments.

The total number of flights, passenger movements and seats shown correspond to total passenger services reported in Table 3 - please read the explanatory notes shown under Table 3 for coverage (page 24).

The data shown here does not include passengers not uplifted/discharged in Australia for airlines other than Qantas Airways.

For example: Dubai-Auckland passengers on services that operate via Australia to Auckland. Services by Emirates and Royal Brunei Airlines are affected.

**TRAFFIC ON BOARD PASSENGER MOVEMENTS, FLIGHTS AND SEATS BY REGION BASED ON NON-STOP SERVICES TO AND FROM AUSTRALIA**  
 SCHEDULED INTERNATIONAL PASSENGER AIR SERVICES - Year ended December 2008



Share of Operated Seats by Region

South-East Asia	37.6%	North America	7.3%	Africa	1.4%
New Zealand	23.7%	Islands	5.9%	South Asia	0.2%
North-East Asia	20.7%	Middle East	3.2%	South America	0.0%

Please see notes on page 14.



**TABLE 1 SCHEDULED INTERNATIONAL AIR TRAFFIC TO AND FROM AUSTRALIA: Year ended December 2008**

Scheduled Operator	Country to/from	Inbound			Outbound		
		Passengers	Freight (tonnes)	Mail (tonnes)	Passengers	Freight (tonnes)	Mail (tonnes)
Aerolineas Argentinas	Argentina	23 798	105.9	6.8	22 406	214.5	-
"	New Zealand	14 484	542.5	-	17 742	816.3	-
"	ALL SERVICES	38 282	648.4	6.8	40 148	1 030.8	-
Air Caledonie	New Caledonia	46 958	52.4	6.6	46 771	872.2	27.8
Air Canada	Canada	73 269	3 102.9	0.1	74 951	2 395.0	0.1
Air China	China	105 297	2 070.6	293.8	96 052	1 483.0	18.2
Air Mauritius (a)	Mauritius	37 285	925.9	5.1	34 043	999.2	0.0
Air New Zealand	China	..	..	..	..	151.8	-
"	Cook Islands	655	0.2	-	655	0.2	-
"	Germany	..	39.0	-	..	-	-
"	New Zealand	1 106 646	22 127.1	2 590.4	1 100 414	19 170.3	108.0
"	USA	5 729	4 937.4	0.0	6 131	1.6	-
"	ALL SERVICES	1 113 030	27 103.6	2 590.4	1 107 200	19 323.9	108.0
Air Niugini	Papua New Guinea	73 013	937.6	23.4	77 083	2 459.3	124.2
Air Pacific	Fiji	215 545	3 451.4	5.8	205 112	3 561.1	163.5
Air Tahiti Nui	Tahiti	17 880	626.1	-	18 875	740.1	-
Air Vanuatu (b)	Vanuatu	45 540	133.0	-	45 143	510.0	-
AirAsia X	Malaysia	74 289	738.7	-	75 878	175.9	-
Airlines PNG	Papua New Guinea	15 740	30.4	0.2	15 255	226.1	0.2
Airnorth	Indonesia	9 604	-	-	10 646	-	-
Asiana Airlines	Korea	88 079	2 594.1	197.8	87 238	1 096.5	-
British Airways	Singapore	29 211	1 598.4	2.3	31 182	1 574.5	-
"	Thailand	48 954	605.2	1.5	44 152	359.7	-
"	UK	102 318	4 590.9	952.2	102 689	1 232.4	-
"	ALL SERVICES	180 483	6 794.5	955.9	178 023	3 166.6	-
Cargolux Airlines Intl (c)	Luxembourg	..	2 721.8	-	..	25.6	-
"	New Zealand	..	..	..	..	2 327.1	-
"	Singapore	..	1 061.4	-	..	..	..
"	USA	..	..	..	..	1 010.6	-
"	ALL SERVICES	-	3 783.2	-	-	3 363.3	-
Cathay Pacific Airways	Hong Kong (SAR)	662 109	40 970.7	1 546.1	614 535	27 901.7	424.0
China Airlines	Taiwan	84 260	1 086.1	171.9	86 516	416.1	0.5
China Eastern Airlines	China	75 984	1 349.3	123.6	67 858	530.4	26.2
China Southern Airlines	China	66 332	2 770.3	190.6	61 698	206.9	30.5
Continental Micronesia	Guam	11 258	4.7	0.0	11 274	16.1	0.1
Emirates	New Zealand	292 544	13 164.4	54.1	259 924	11 297.5	-
"	Singapore	17 236	1 940.6	321.9	14 084	3 624.5	-
"	Thailand	15 174	142.2	-	14 092	55.2	-
"	United Arab Emirates	529 225	19 253.3	2 107.0	510 615	18 310.1	106.8
"	ALL SERVICES	854 179	34 500.6	2 483.0	798 715	33 287.4	106.8
Etihad Airways	Singapore	7 919	588.3	0.0	7 142	770.9	0.0
"	United Arab Emirates	111 405	3 428.2	147.0	116 140	4 195.1	245.0
"	ALL SERVICES	119 324	4 016.6	147.0	123 282	4 966.0	245.0
Eva Air	Taiwan	29 170	1 526.1	51.9	26 383	582.6	27.6
Federal Express Corporation	Philippines	..	..	..	..	1 549.2	-
"	USA	..	10 210.5	825.5	..	..	..
"	ALL SERVICES	-	10 210.5	825.5	-	1 549.2	-
Freedom Air International (d)	New Zealand	40 998	-	-	39 668	-	-
Garuda Indonesia	Indonesia	235 263	3 447.0	101.8	236 456	1 316.9	0.5
Hawaiian Airlines	USA	29 198	160.2	43.0	29 587	689.6	0.0
JALways	Japan	211 838	4 035.0	1 745.4	203 777	4 340.9	0.6
Jetstar (e) (f)	Indonesia	81 843	2 146.2	-	85 836	366.0	12.0
"	Japan	159 425	2 745.9	447.5	162 445	1 957.3	47.0
"	Malaysia	23 472	972.5	-	23 816	331.1	25.2
"	New Zealand	188 578	252.2	-	188 127	306.9	-
"	Singapore	74 990	186.6	-	78 767	55.1	134.8
"	Thailand	77 147	1 985.8	17.1	73 670	555.7	16.4
"	USA	57 821	1 392.9	7.8	56 497	677.2	8.7
"	Vietnam	33 116	1 169.5	-	33 620	340.9	12.3
"	ALL SERVICES	696 392	10 851.6	472.3	702 778	4 590.3	256.4
Korean Air	Korea	154 198	11 203.8	1 418.8	150 583	6 178.4	31.2
LAN Airlines (g)	Chile	38 668	3 284.5	11.2	42 299	1 102.3	53.4
"	New Zealand	22 788	153.8	-	30 944	392.4	0.0
"	ALL SERVICES	61 456	3 438.3	11.2	73 243	1 494.7	53.4
Malaysia Airlines	Malaysia	473 281	36 881.4	268.7	474 392	16 013.6	-
Martinair Holland (h)	Bahrain	..	..	..	..	22.5	-



**TABLE 1 SCHEDULED INTERNATIONAL AIR TRAFFIC TO AND FROM AUSTRALIA: Year ended December 2008**

Scheduled Operator	Country to/from	Inbound			Outbound		
		Passengers	Freight (tonnes)	Mail (tonnes)	Passengers	Freight (tonnes)	Mail (tonnes)
Martinair Holland (h)	Hong Kong (SAR)	..	..	..	..	200.1	-
"	Netherlands	..	7 122.6	-	..	1 595.1	-
"	New Zealand	..	..	..	..	30.0	-
"	Thailand	..	..	..	..	36.9	-
"	United Arab Emirates	..	..	..	..	148.1	-
"	ALL SERVICES	-	7 122.6	-	-	2 032.6	-
Our Airlines (i)	Kiribati	279	-	-	194	-	-
"	Nauru	1 457	2.8	0.2	1 278	66.0	2.5
"	Solomon Islands	934	-	-	969	10.6	0.0
"	ALL SERVICES	2 670	2.8	0.2	2 441	76.6	2.5
OzJet (j)	Indonesia	6 138	-	-	6 617	-	-
Pacific Air Express	Solomon Islands	..	42.6	-	..	652.3	-
Pacific Blue	Fiji	85 278	185.4	-	87 363	306.2	-
"	Indonesia	4 152	-	-	7 485	-	-
"	New Zealand	271 556	548.5	-	287 145	344.7	-
"	Papua New Guinea	2 586	-	-	2 780	8.0	-
"	Solomon Islands	621	-	-	752	2.5	-
"	Tonga	11 462	20.3	-	11 103	14.4	-
"	Vanuatu	19 661	1.7	-	19 840	83.1	-
"	ALL SERVICES	395 316	755.9	-	416 468	758.9	-
Philippine Airlines	Philippines	58 573	1 984.1	20.0	56 339	455.9	-
Polynesian Blue	Western Samoa	17 935	9.8	-	17 893	16.7	-
Qantas Airways	Argentina	3 852	57.9	-	3 987	16.4	1.4
"	Brunei	..	..	..	..	180.9	-
"	Canada	1 599	3.8	3.9	1 361	2.0	0.0
"	China	97 319	8 026.9	89.3	93 392	2 749.4	56.3
"	Fiji	316	0.0	-	2	-	-
"	Germany	54 332	4 585.8	40.9	54 749	578.7	577.1
"	Hong Kong (SAR)	328 347	17 862.6	213.5	295 052	7 689.2	685.4
"	India	31 179	665.8	-	27 803	305.8	57.0
"	Indonesia	71 874	886.9	0.3	68 585	1 049.2	39.1
"	Italy	1 569	9.8	-	1 424	0.3	-
"	Japan	258 353	5 720.2	2 104.0	257 789	3 822.2	964.8
"	Korea	1 962	57.2	-	1 975	9.6	0.7
"	New Caledonia	27 440	19.6	2.9	27 684	206.7	27.3
"	New Zealand	614 106	16 116.5	22.0	629 405	19 713.3	2 275.7
"	Pakistan	..	..	..	..	92.3	-
"	Philippines	39 363	720.3	57.2	36 173	791.5	24.8
"	Singapore	496 738	17 480.5	1 056.3	450 548	19 305.5	1 937.4
"	South Africa	78 178	1 375.6	58.5	71 586	623.0	139.4
"	Thailand	48 376	1 784.6	81.2	42 015	777.6	161.9
"	UK	227 126	5 207.0	586.7	231 056	1 424.4	2 035.9
"	United Arab Emirates	..	..	..	..	2.6	-
"	USA	555 433	23 978.1	3 242.6	560 451	5 829.0	2 201.5
"	Vietnam	..	..	..	..	3.5	-
"	ALL SERVICES	2 937 462	104 558.9	7 559.4	2 855 037	65 173.0	11 185.8
Royal Brunei Airlines	Brunei	74 141	1 284.1	0.9	73 033	1 536.4	-
"	New Zealand	15 570	403.0	-	12 684	774.7	0.0
"	ALL SERVICES	89 711	1 687.1	0.9	85 717	2 311.1	0.0
Silk Air (k)	Singapore	664	64.2	14.0	578	0.4	-
Singapore Airlines	Malaysia	..	..	..	..	296.8	-
"	New Zealand	..	1 107.3	-	..	3 871.6	-
"	Singapore	1 386 995	61 873.5	1 463.2	1 327 967	52 822.7	14.5
"	ALL SERVICES	1 386 995	62 980.8	1 463.2	1 327 967	56 991.1	14.5
SkyAirWorld (l)	Solomon Islands	5 112	-	-	4 596	-	-
Solomon Airlines	Solomon Islands	11 279	123.4	-	13 295	84.4	-
South African Airways	South Africa	59 661	555.4	71.2	49 241	1 680.3	20.7
Tasman Cargo Airlines (m)	New Zealand	..	3 294.8	-	..	3 495.0	-
Thai Airways International	Thailand	511 611	23 524.2	1 841.0	489 055	13 819.7	56.1
Tiger Airways	Singapore	88 165	-	-	83 487	-	-
United Airlines	USA	194 114	1 612.5	1 388.0	190 323	6 546.0	61.8
United Parcel Service	Singapore	..	..	..	..	1 707.3	-
"	USA	..	14 741.4	-	..	..	..
"	ALL SERVICES	-	14 741.4	-	-	1 707.3	-
Vietnam Airlines (n)	Vietnam	93 509	2 329.8	-	94 714	453.2	-
Virgin Atlantic Airways	Hong Kong (SAR)	35 551	5 811.3	-	33 426	1 851.9	-

**TABLE 1 SCHEDULED INTERNATIONAL AIR TRAFFIC TO AND FROM AUSTRALIA: Year ended December 2008**

Scheduled Operator	Country to/from	Inbound			Outbound		
		Passengers	Freight (tonnes)	Mail (tonnes)	Passengers	Freight (tonnes)	Mail (tonnes)
Virgin Atlantic Airways	UK	47 113	526.8	-	43 786	471.5	-
"	ALL SERVICES	82 664	6 338.1	-	77 212	2 323.4	-
<b>TOTAL</b>		<b>11 881 113</b>	<b>451 173.5</b>	<b>26 044.4</b>	<b>11 584 143</b>	<b>304 061.6</b>	<b>12 986.2</b>

Please refer to explanatory notes - paragraphs 3, 6 and 13 in particular.

(a) Nil operations to Sydney in September and November 2008.

(b) No mail data for August 2007 and onwards.

(c) Nil operations for November 2008.

(d) Service ceased March 2008.

(e) No Mail data prior to November 2007.

(f) Freight data for services to/from Singapore is not included prior to July 2007.

(g) Reported as Lan Chile prior to December 2008.

(h) Service ceased December 2008.

(i) Reported as Air Nauru prior to December 2008. Data not received for August 2008 and onwards.

(j) Scheduled services commenced June 2008.

(k) Scheduled service commenced December 2007 and ceased May 2008.

(l) Service commenced March 2008.

(m) Reported as Asian Express Airlines prior to December 2008.

(n) No data received for inbound operations to Sydney for November 2008. See page 7 for other missing data.

**TABLE 2 SCHEDULED OPERATOR MARKET SHARES AND GROWTH: Year ended December**

Scheduled Operators	Country to/from	Total Passengers				Total Freight (tonnes)				Total Mail (tonnes)			
		2007	2008	(%) of TOTAL	(%) Change	2007	2008	(%) of TOTAL	(%) Change	2007	2008	(%) of TOTAL	(%) Change
Aerolineas Argentinas	Argentina	40 129	46 204	0.2	15.1	303.8	320.5	0.0	5.5	5.1	6.8	0.0	34.6
"	New Zealand	33 503	32 226	0.1	-3.8	1 075.9	1 358.8	0.2	26.3	-	-	-	..
"	ALL SERVICES	73 632	78 430	0.3	6.5	1 379.7	1 679.2	0.2	21.7	5.1	6.8	0.0	34.6
Air Caledonie	New Caledonia	87 765	93 729	0.4	6.8	846.8	924.6	0.1	9.2	40.1	34.5	0.1	-14.0
Air Canada	Canada	97 603	148 220	0.6	51.9	115.6	5 497.9	0.7	>999.9	0.0	0.2	0.0	>999.9
"	USA	22 033	..	..	-100.0	3 580.8	..	..	-100.0	38.3	..	..	-100.0
"	ALL SERVICES	119 636	148 220	0.6	23.9	3 696.4	5 497.9	0.7	48.7	38.3	0.2	0.0	-99.6
Air China	China	148 928	201 349	0.9	35.2	3 415.7	3 553.7	0.5	4.0	171.9	312.0	0.8	81.5
Air Mauritius (a)	Mauritius	67 041	71 328	0.3	6.4	1 688.9	1 925.1	0.3	14.0	3.0	5.1	0.0	70.8
Air New Zealand	China	..	..	..	..	275.7	151.8	0.0	-45.0	-	-	-	..
"	Cook Islands	1 085	1 310	0.0	20.7	0.0	0.4	0.0	>999.9	-	-	-	..
"	Germany	..	..	..	..	32.0	39.0	0.0	22.1	-	-	-	..
"	New Zealand	2 034 983	2 207 060	9.4	8.5	41 519.6	41 297.3	5.5	-0.5	2 546.6	2 698.4	6.9	6.0
"	USA	19 588	11 860	0.1	-39.5	5 437.6	4 939.0	0.7	-9.2	67.4	0.0	0.0	-100.0
"	ALL SERVICES	2 055 656	2 220 230	9.5	8.0	47 264.9	46 427.5	6.1	-1.8	2 614.0	2 698.4	6.9	3.2
Air Niugini	Papua New Guinea	136 440	150 096	0.6	10.0	3 148.9	3 396.9	0.4	7.9	303.0	147.6	0.4	-51.3
Air Pacific	Fiji	368 006	420 657	1.8	14.3	7 370.7	7 012.5	0.9	-4.9	182.6	169.3	0.4	-7.3
Air Tahiti Nui	Tahiti	43 368	36 755	0.2	-15.2	1 626.3	1 366.1	0.2	-16.0	-	-	-	..
Air Vanuatu (b)	Vanuatu	82 904	90 683	0.4	9.4	581.8	643.0	0.1	10.5	35.6	-	-	-100.0
AirAsia X (c)	Malaysia	14 671	150 167	0.6	923.6	147.6	914.6	0.1	519.7	-	-	-	..
Airlines PNG	Papua New Guinea	30 178	30 995	0.1	2.7	295.3	256.5	0.0	-13.1	0.2	0.4	0.0	68.0
Airmorth (d)	Indonesia	3 518	20 250	0.1	475.6	0.1	-	-	-100.0	-	-	-	..
Asiana Airlines	Korea	167 893	175 317	0.7	4.4	4 279.9	3 690.6	0.5	-13.8	329.7	197.8	0.5	-40.0
Austrian Airlines (e)	Austria	38 566	..	..	-100.0	-	..	..	..	-	..	..	..
"	Malaysia	9 152	..	..	-100.0	-	..	..	..	-	..	..	..
"	Singapore	4 699	..	..	-100.0	-	..	..	..	-	..	..	..
"	ALL SERVICES	52 417	-	-	-100.0	-	-	-	..	-	-	-	..
British Airways	Singapore	58 278	60 393	0.3	3.6	4 294.5	3 172.9	0.4	-26.1	7.9	2.3	0.0	-71.4
"	Thailand	96 939	93 106	0.4	-4.0	1 120.2	964.9	0.1	-13.9	1.4	1.5	0.0	8.6
"	UK	200 406	205 007	0.9	2.3	5 851.7	5 823.3	0.8	-0.5	795.7	952.2	2.4	19.7
"	ALL SERVICES	355 623	358 506	1.5	0.8	11 266.4	9 961.1	1.3	-11.6	805.0	955.9	2.4	18.7
Cargolux Airlines Intl (f)	Luxembourg	..	..	..	..	4 244.3	2 747.4	0.4	-35.3	-	-	-	..
"	New Zealand	..	..	..	..	3 270.3	2 327.1	0.3	-28.8	-	-	-	..
"	Singapore	..	..	..	..	313.6	1 061.4	0.1	238.5	-	-	-	..
"	USA	..	..	..	..	1 076.4	1 010.6	0.1	-6.1	-	-	-	..
"	ALL SERVICES	-	-	-	..	8 904.6	7 146.5	0.9	-19.7	-	-	-	..
Cathay Pacific Airways	Hong Kong (SAR)	1 097 767	1 276 644	5.4	16.3	64 912.1	68 872.4	9.1	6.1	1 655.7	1 970.2	5.0	19.0
China Airlines	Taiwan	164 064	170 776	0.7	4.1	2 445.0	1 502.1	0.2	-38.6	141.8	172.3	0.4	21.5
China Eastern Airlines	China	158 295	143 842	0.6	-9.1	2 173.5	1 879.7	0.2	-13.5	134.0	149.8	0.4	11.7
China Southern Airlines	China	133 602	128 030	0.5	-4.2	3 287.4	2 977.2	0.4	-9.4	216.9	221.2	0.6	2.0
Continental Micronesia	Guam	23 168	22 532	0.1	-2.7	31.3	20.8	0.0	-33.6	0.1	0.1	0.0	-41.9
Emirates	New Zealand	546 964	552 468	2.4	1.0	25 535.7	24 461.9	3.2	-4.2	92.3	54.1	0.1	-41.4

**TABLE 2 SCHEDULED OPERATOR MARKET SHARES AND GROWTH: Year ended December**

Scheduled Operators	Country to/from	Total Passengers				Total Freight (tonnes)				Total Mail (tonnes)			
		2007	2008	(%) of TOTAL	(%) Change	2007	2008	(%) of TOTAL	(%) Change	2007	2008	(%) of TOTAL	(%) Change
Emirates	Singapore	50 662	31 320	0.1	-38.2	6 923.0	5 565.1	0.7	-19.6	264.0	321.9	0.8	21.9
"	Thailand	26 208	29 266	0.1	11.7	592.0	197.5	0.0	-66.6	-	-	-	..
"	United Arab Emirates	1 058 650	1 039 840	4.4	-1.8	34 983.7	37 563.4	5.0	7.4	1 316.7	2 213.8	5.7	68.1
"	ALL SERVICES	1 682 484	1 652 894	7.0	-1.8	68 034.3	67 787.9	9.0	-0.4	1 673.1	2 589.7	6.6	54.8
Etihad Airways (g)	Singapore	10 979	15 061	0.1	37.2	193.5	1 359.2	0.2	602.3	-	0.0	0.0	..
"	United Arab Emirates	94 770	227 545	1.0	140.1	4 908.2	7 623.4	1.0	55.3	215.0	392.0	1.0	82.3
"	ALL SERVICES	105 749	242 606	1.0	129.4	5 101.7	8 982.6	1.2	76.1	215.0	392.1	1.0	82.3
Eva Air	Taiwan	60 016	55 553	0.2	-7.4	2 247.1	2 108.7	0.3	-6.2	55.5	79.4	0.2	43.2
Federal Express Corporation	Philippines	..	..	..	..	1 860.2	1 549.2	0.2	-16.7	-	-	-	..
"	USA	..	..	..	..	11 944.3	10 210.5	1.4	-14.5	305.9	825.5	2.1	169.8
"	ALL SERVICES	-	-	-	..	13 804.5	11 759.7	1.6	-14.8	305.9	825.5	2.1	169.8
Freedom Air International (h)	New Zealand	348 853	80 666	0.3	-76.9	-	-	-	..	-	-	-	..
Garuda Indonesia	Indonesia	351 239	471 719	2.0	34.3	4 851.0	4 763.9	0.6	-1.8	64.9	102.2	0.3	57.5
Gulf Air (i)	Bahrain	35 043	..	..	-100.0	1 222.7	..	..	-100.0	119.9	..	..	-100.0
"	Singapore	10 906	..	..	-100.0	734.1	..	..	-100.0	1.6	..	..	-100.0
"	ALL SERVICES	45 949	-	-	-100.0	1 956.8	-	-	-100.0	121.5	-	-	-100.0
Hawaiian Airlines	USA	62 436	58 785	0.3	-5.8	804.5	849.8	0.1	5.6	50.1	43.1	0.1	-14.0
JALways	Japan	285 172	415 615	1.8	45.7	5 527.2	8 375.9	1.1	51.5	1 564.5	1 745.9	4.5	11.6
Japan Airlines (j)	Japan	242 434	..	..	-100.0	4 370.6	..	..	-100.0	244.0	..	..	-100.0
Jetstar (k) (l)	Indonesia	118 565	167 679	0.7	41.4	1 591.6	2 512.2	0.3	57.8	0.4	12.0	0.0	>999.9
"	Japan	176 418	321 870	1.4	82.4	4 005.0	4 703.2	0.6	17.4	178.9	494.5	1.3	176.4
"	Malaysia	21 573	47 288	0.2	119.2	739.9	1 303.7	0.2	76.2	9.5	25.2	0.1	164.9
"	New Zealand	386 859	376 705	1.6	-2.6	482.2	559.1	0.1	15.9	-	-	-	..
"	Singapore	100 491	153 757	0.7	53.0	79.8	241.7	0.0	202.9	31.2	134.8	0.3	331.4
"	Thailand	147 262	150 817	0.6	2.4	2 854.8	2 541.5	0.3	-11.0	4.6	33.5	0.1	634.7
"	USA	101 953	114 318	0.5	12.1	2 178.6	2 070.1	0.3	-5.0	5.1	16.4	0.0	220.7
"	Vietnam	65 924	66 736	0.3	1.2	1 904.1	1 510.4	0.2	-20.7	3.7	12.3	0.0	231.6
"	ALL SERVICES	1 119 045	1 399 170	6.0	25.0	13 836.0	15 441.9	2.0	11.6	233.4	728.7	1.9	212.2
Korean Air	Korea	294 207	304 781	1.3	3.6	18 791.2	17 382.2	2.3	-7.5	824.9	1 450.0	3.7	75.8
LAN Airlines (m)	Chile	73 394	80 967	0.3	10.3	3 549.1	4 386.8	0.6	23.6	48.6	64.6	0.2	32.7
"	New Zealand	52 561	53 732	0.2	2.2	739.1	546.2	0.1	-26.1	1.0	0.0	0.0	-99.4
"	ALL SERVICES	125 955	134 699	0.6	6.9	4 288.2	4 932.9	0.7	15.0	49.6	64.6	0.2	30.2
Malaysia Airlines	Malaysia	1 102 680	947 673	4.0	-14.1	60 870.3	52 895.1	7.0	-13.1	78.5	268.7	0.7	242.4
Martinair Holland (n)	Bahrain	..	..	..	..	..	22.5	0.0	..	..	-	-	..
"	Hong Kong (SAR)	..	..	..	..	440.9	200.1	0.0	-54.6	-	-	-	..
"	Japan	..	..	..	..	36.9	..	..	-100.0	-	..	..	..
"	Netherlands	..	..	..	..	9 386.3	8 717.6	1.2	-7.1	-	-	-	..
"	New Zealand	..	..	..	..	1.4	30.0	0.0	>999.9	-	-	-	..
"	Thailand	..	..	..	..	35.1	36.9	0.0	5.0	-	-	-	..
"	UK	..	..	..	..	30.5	..	..	-100.0	-	..	..	..
"	United Arab Emirates	..	..	..	..	337.0	148.1	0.0	-56.0	-	-	-	..
"	ALL SERVICES	-	-	-	..	10 268.1	9 155.2	1.2	-10.8	-	-	-	..

**TABLE 2 SCHEDULED OPERATOR MARKET SHARES AND GROWTH: Year ended December**

Scheduled Operators	Country to/from	Total Passengers				Total Freight (tonnes)				Total Mail (tonnes)			
		2007	2008	(%) of TOTAL	(%) Change	2007	2008	(%) of TOTAL	(%) Change	2007	2008	(%) of TOTAL	(%) Change
Merpati Nusantara Airlines (o)	Indonesia	2 428	..	..	-100.0	-	..	..	..	-	..	..	..
Our Airlines (p)	Kiribati	..	473	0.0	..	..	-	-	..	..	-	-	..
"	Marshall Islands	186	..	..	-100.0	4.8	..	..	-100.0	-	..	..	..
"	Nauru	5 258	2 735	0.0	-48.0	103.2	68.8	0.0	-33.3	5.4	2.7	0.0	-50.3
"	Solomon Islands	4 070	1 903	0.0	-53.2	19.8	10.6	0.0	-46.4	0.0	0.0	0.0	-71.0
"	ALL SERVICES	9 514	5 111	0.0	-46.3	127.8	79.4	0.0	-37.9	5.4	2.7	0.0	-50.5
OzJet (q)	Indonesia	..	12 755	0.1	..	..	-	-	..	..	-	-	..
Pacific Air Express	Solomon Islands	..	..	..	..	990.0	694.9	0.1	-29.8	-	-	-	..
Pacific Blue	Fiji	143 210	172 641	0.7	20.6	508.5	491.6	0.1	-3.3	-	-	-	..
"	Indonesia	..	11 637	0.0	..	..	-	-	..	..	-	-	..
"	New Zealand	426 223	558 701	2.4	31.1	1 176.3	893.3	0.1	-24.1	-	-	-	..
"	Papua New Guinea	..	5 366	0.0	..	..	8.0	0.0	..	..	-	-	..
"	Solomon Islands	..	1 373	0.0	..	..	2.5	0.0	..	..	-	-	..
"	Tonga	20 924	22 565	0.1	7.8	53.8	34.8	0.0	-35.4	-	-	-	..
"	Vanuatu	31 010	39 501	0.2	27.4	65.3	84.8	0.0	29.7	-	-	-	..
"	ALL SERVICES	621 367	811 784	3.5	30.6	1 804.0	1 514.8	0.2	-16.0	-	-	-	..
Philippine Airlines	Philippines	81 435	114 912	0.5	41.1	1 593.0	2 440.0	0.3	53.2	50.8	20.0	0.1	-60.7
Polynesian Blue	Western Samoa	34 353	35 828	0.2	4.3	58.2	26.5	0.0	-54.5	-	-	-	..
Qantas Airways	Argentina	..	7 839	0.0	..	..	74.3	0.0	..	..	1.4	0.0	..
"	Bahrain	..	..	..	..	206.6	..	..	-100.0	-	..	..	..
"	Brunei	..	..	..	..	..	180.9	0.0	..	..	-	-	..
"	Canada	9 717	2 960	0.0	-69.5	58.5	5.9	0.0	-90.0	41.5	4.0	0.0	-90.5
"	China	172 140	190 711	0.8	10.8	7 715.7	10 776.3	1.4	39.7	26.3	145.6	0.4	453.4
"	Fiji	..	318	0.0	..	-	0.0	0.0	..	-	-	-	..
"	Germany	95 119	109 081	0.5	14.7	5 651.7	5 164.5	0.7	-8.6	542.1	618.0	1.6	14.0
"	Hong Kong (SAR)	608 356	623 399	2.7	2.5	24 050.1	25 551.8	3.4	6.2	946.0	898.9	2.3	-5.0
"	India	64 882	58 982	0.3	-9.1	858.6	971.5	0.1	13.2	54.5	57.0	0.1	4.7
"	Indonesia	156 304	140 459	0.6	-10.1	1 997.7	1 936.0	0.3	-3.1	81.1	39.3	0.1	-51.5
"	Italy	..	2 993	0.0	..	104.7	10.1	0.0	-90.3	-	-	-	..
"	Japan	768 491	516 142	2.2	-32.8	14 393.2	9 542.5	1.3	-33.7	2 652.2	3 068.8	7.9	15.7
"	Kenya	..	..	..	..	99.4	..	..	-100.0	-	..	..	..
"	Korea	4 048	3 937	0.0	-2.7	35.2	66.8	0.0	90.0	1.1	0.7	0.0	-43.0
"	New Caledonia	51 184	55 124	0.2	7.7	220.3	226.3	0.0	2.7	23.0	30.2	0.1	31.2
"	New Zealand	1 296 147	1 243 511	5.3	-4.1	40 351.1	35 829.8	4.7	-11.2	2 482.9	2 297.8	5.9	-7.5
"	Nigeria	..	..	..	..	104.9	..	..	-100.0	-	..	..	..
"	Pakistan	..	..	..	..	..	92.3	0.0	..	..	-	-	..
"	Papua New Guinea	..	..	..	..	18.0	..	..	-100.0	0.4	..	..	-100.0
"	Philippines	78 676	75 536	0.3	-4.0	1 775.2	1 511.7	0.2	-14.8	79.0	82.0	0.2	3.9
"	Qatar	..	..	..	..	102.0	..	..	-100.0	-	..	..	..
"	Singapore	966 122	947 286	4.0	-1.9	39 129.6	36 786.0	4.9	-6.0	2 832.5	2 993.7	7.7	5.7
"	South Africa	142 766	149 764	0.6	4.9	2 088.6	1 998.6	0.3	-4.3	231.7	197.9	0.5	-14.6
"	Thailand	91 475	90 391	0.4	-1.2	2 947.4	2 562.2	0.3	-13.1	279.0	243.2	0.6	-12.8

**TABLE 2 SCHEDULED OPERATOR MARKET SHARES AND GROWTH: Year ended December**

Scheduled Operators	Country to/from	Total Passengers				Total Freight (tonnes)				Total Mail (tonnes)			
		2007	2008	(%) of TOTAL	(%) Change	2007	2008	(%) of TOTAL	(%) Change	2007	2008	(%) of TOTAL	(%) Change
Qantas Airways	UK	503 945	458 182	2.0	-9.1	7 310.2	6 631.4	0.9	-9.3	2 867.6	2 622.7	6.7	-8.5
"	United Arab Emirates	..	..	..	..	284.9	2.6	0.0	-99.1	-	-	-	..
"	USA	1 097 310	1 115 884	4.8	1.7	33 840.1	29 807.1	3.9	-11.9	5 655.1	5 444.1	13.9	-3.7
"	Vietnam	..	..	..	..	..	3.5	0.0	..	..	-	-	..
"	ALL SERVICES	6 106 682	5 792 499	24.7	-5.1	183 343.6	169 731.9	22.5	-7.4	18 796.0	18 745.2	48.0	-0.3
Royal Brunei Airlines	Brunei	124 515	147 174	0.6	18.2	3 737.6	2 820.5	0.4	-24.5	0.9	0.9	0.0	2.3
"	New Zealand	28 405	28 254	0.1	-0.5	523.1	1 177.7	0.2	125.1	-	0.0	0.0	..
"	ALL SERVICES	152 920	175 428	0.7	14.7	4 260.7	3 998.2	0.5	-6.2	0.9	0.9	0.0	2.6
Silk Air (r)	Singapore	480	1 242	0.0	158.8	8.2	64.6	0.0	692.5	2.2	14.0	0.0	536.0
Singapore Airlines	Malaysia	..	..	..	..	..	296.8	0.0	..	..	-	-	..
"	New Zealand	..	..	..	..	3 882.3	4 978.9	0.7	28.2	-	-	-	..
"	Singapore	2 519 373	2 714 962	11.6	7.8	109 060.3	114 696.2	15.2	5.2	1 273.4	1 477.7	3.8	16.0
"	ALL SERVICES	2 519 373	2 714 962	11.6	7.8	112 942.6	119 971.9	15.9	6.2	1 273.4	1 477.7	3.8	16.0
SkyAirWorld (s)	Solomon Islands	..	9 708	0.0	..	..	-	-	..	..	-	-	..
Solomon Airlines	Solomon Islands	28 706	24 574	0.1	-14.4	231.9	207.9	0.0	-10.4	-	-	-	..
South African Airways	South Africa	103 020	108 902	0.5	5.7	2 825.4	2 235.7	0.3	-20.9	91.0	91.9	0.2	1.0
Tasman Cargo Airlines (t)	New Zealand	..	..	..	..	7 471.3	6 789.9	0.9	-9.1	-	-	-	..
Thai Airways International	Thailand	997 745	1 000 666	4.3	0.3	32 011.7	37 343.9	4.9	16.7	1 834.0	1 897.0	4.9	3.4
Tiger Airways	Singapore	138 881	171 652	0.7	23.6	-	-	-	..	-	-	-	..
United Airlines	USA	428 532	384 437	1.6	-10.3	7 310.9	8 158.5	1.1	11.6	2 076.6	1 449.8	3.7	-30.2
United Parcel Service	Hong Kong (SAR)	..	..	..	..	85.5	..	..	-100.0	-	..	..	..
"	Singapore	..	..	..	..	225.8	1 707.3	0.2	656.2	-	-	-	..
"	USA	..	..	..	..	11 050.1	14 741.4	2.0	33.4	-	-	-	..
"	ALL SERVICES	-	-	-	..	11 361.3	16 448.6	2.2	44.8	-	-	-	..
Vietnam Airlines (u)	Vietnam	178 549	188 223	0.8	5.4	3 049.6	2 783.0	0.4	-8.7	-	-	-	..
Virgin Atlantic Airways	Hong Kong (SAR)	76 208	68 977	0.3	-9.5	7 866.8	7 663.2	1.0	-2.6	-	-	-	..
"	UK	84 695	90 899	0.4	7.3	1 076.3	998.3	0.1	-7.2	-	-	-	..
"	ALL SERVICES	160 903	159 876	0.7	-0.6	8 943.0	8 661.5	1.1	-3.1	-	-	-	..
<b>TOTAL</b>		<b>22 775 679</b>	<b>23 465 256</b>	<b>100.0</b>	<b>3.0</b>	<b>761 848.1</b>	<b>755 235.0</b>	<b>100.0</b>	<b>-0.9</b>	<b>36 288.3</b>	<b>39 030.6</b>	<b>100.0</b>	<b>7.6</b>

**TABLE 2 SCHEDULED OPERATOR MARKET SHARES AND GROWTH: Year ended December**

---

Please refer to explanatory notes - paragraphs 3, 6 and 13 in particular.

- (a) Nil operations to Sydney in September and November 2008.
- (b) No mail data for August 2007 and onwards.
- (c) Service commenced November 2007.
- (d) Service commenced October 2007.
- (e) Service ceased March 2007.
- (f) Nil operations for November 2008.
- (g) Service commenced March 2007.
- (h) Service ceased March 2008.
- (i) Service ceased June 2007.
- (j) Operations taken over by JALWays in October 2007.
- (k) No Mail data prior to November 2007.
- (l) Freight data for services to/from Singapore is not included prior to July 2007.
- (m) Reported as Lan Chile prior to December 2008.
- (n) Service ceased December 2008.
- (o) Operations reported under Airmoth for November 2007 onwards.
- (p) Reported as Air Nauru prior to December 2008. Data not received for August 2008 and onwards.
- (q) Scheduled services commenced June 2008.
- (r) Scheduled service commenced December 2007 and ceased May 2008.
- (s) Service commenced March 2008.
- (t) Reported as Asian Express Airlines prior to December 2008.
- (u) No data received for inbound operations to Sydney for November 2008. See page 7 for other missing data.

**TABLE 3 AIRLINE PASSENGER CAPACITY AND UTILISATION TO AND FROM AUSTRALIA BY OPERATOR: Year ended December 2008**

Scheduled Operator	Service to/from	Inbound				Outbound			
		No. of Flights	Pax Carried	Seats Available	Seat Utilisation %	No. of Flights	Pax Carried	Seats Available	Seat Utilisation %
Aerolineas Argentinas	Argentina	196	38 282	48 412	79.1	196	40 148	48 412	82.9
Air Caledonie	New Caledonia	324	46 958	60 284	77.9	324	46 771	60 284	77.6
Air Canada	Canada	357	73 269	98 446	74.4	357	74 951	98 435	76.1
Air China	China	516	105 297	123 840	85.0	516	96 052	123 840	77.6
Air Mauritius (a)	Mauritius	167	37 285	49 690	75.0	166	34 043	49 356	69.0
Air New Zealand (b)	Cook Islands	43	4 835	6 536	74.0	43	4 858	6 542	74.3
"	Germany	97	..	-	..	97	..	-	..
"	New Zealand	8 033	1 061 402	1 456 474	72.9	7 984	1 040 523	1 438 507	72.3
"	USA	191	46 793	60 179	77.8	230	61 819	75 308	82.1
"	ALL SERVICES	8 364	1 113 030	1 523 189	73.1	8 354	1 107 200	1 520 357	72.8
Air Niugini	Papua New Guinea	1 120	73 013	134 521	54.3	1 119	77 083	134 006	57.5
Air Pacific	Fiji	1 120	215 545	302 769	71.2	1 119	205 112	302 659	67.8
Air Tahiti Nui	Tahiti	101	17 880	29 694	60.2	101	18 875	29 694	63.6
Air Vanuatu	Vanuatu	469	45 540	77 926	58.4	469	45 143	77 882	58.0
AirAsia X	Malaysia	301	74 289	102 499	72.5	300	75 878	102 048	74.4
Airlines PNG	Papua New Guinea	525	15 740	27 030	58.2	530	15 255	27 410	55.7
Airnorth	Indonesia	192	9 604	13 101	73.3	192	10 646	13 131	81.1
Asiana Airlines	Korea	361	88 079	111 910	78.7	361	87 238	111 910	78.0
British Airways	UK	728	180 483	201 738	89.5	727	178 023	201 518	88.3
Cargolux Airlines Intl (c) (d)	Luxembourg	81	..	-	..	81	..	-	..
Cathay Pacific Airways	Hong Kong (SAR)	3 188	662 109	826 713	80.1	3 185	614 535	825 942	74.4
China Airlines	Taiwan	375	84 260	115 738	72.8	375	86 516	115 048	75.2
China Eastern Airlines	China	390	75 984	106 455	71.4	390	67 858	106 455	63.7
China Southern Airlines	China	332	66 332	91 390	72.6	332	61 698	91 390	67.5
Continental Micronesia	Guam	109	11 258	16 786	67.1	109	11 274	16 786	67.2
Emirates	New Zealand	1 459	289 254	452 126	64.0	1 460	256 837	452 386	56.8
"	United Arab Emirates	2 562	564 925	794 135	71.1	2 561	541 878	793 769	68.3
"	ALL SERVICES	4 021	854 179	1 246 261	68.5	4 021	798 715	1 246 155	64.1
Etihad Airways	United Arab Emirates	559	119 324	147 416	80.9	558	123 282	147 176	83.8
Eva Air	Taiwan	157	29 170	39 564	73.7	157	26 383	39 564	66.7
Federal Express Corporation (c)	Philippines	-	..	-	..	263	..	..	..
"	USA	263	..	..	..	-	..	-	..
"	ALL SERVICES	263	-	-	..	263	-	-	..
Freedom Air International (e)	New Zealand	358	40 998	53 423	76.7	354	39 668	52 954	74.9
Garuda Indonesia	Indonesia	1 600	235 263	298 077	78.9	1 600	236 456	298 077	79.3
Hawaiian Airlines	USA	158	29 198	40 147	72.7	158	29 587	40 147	73.7
JALways	Japan	732	211 838	305 986	69.2	731	203 777	305 367	66.7
Jetstar	Indonesia	402	81 843	109 596	74.7	403	85 836	109 899	78.1
"	Japan	765	159 425	231 327	68.9	767	162 445	232 116	70.0
"	Malaysia	103	23 472	31 209	75.2	104	23 816	31 512	75.6
"	New Zealand	1 446	188 578	255 942	73.7	1 443	188 127	255 411	73.7
"	Singapore	652	74 990	114 336	65.6	653	78 767	114 510	68.8
"	Thailand	310	77 147	93 724	82.3	309	73 670	93 421	78.9
"	USA	257	57 821	77 613	74.5	257	56 497	77 613	72.8



**TABLE 3 AIRLINE PASSENGER CAPACITY AND UTILISATION TO AND FROM AUSTRALIA BY OPERATOR: Year ended December 2008**

Scheduled Operator	Service to/from	Inbound				Outbound			
		No. of Flights	Pax Carried	Seats Available	Seat Utilisation %	No. of Flights	Pax Carried	Seats Available	Seat Utilisation %
Jetstar	Vietnam	190	33 116	45 485	72.8	191	33 620	45 646	73.7
"	ALL SERVICES	4 125	696 392	959 232	72.6	4 127	702 778	960 128	73.2
Korean Air	Korea	827	154 198	214 710	71.8	827	150 583	213 407	70.6
LAN Airlines (f)	Chile	342	61 456	88 503	69.4	343	73 243	88 762	82.5
Malaysia Airlines	Malaysia	2 305	473 281	646 891	73.2	2 270	474 392	645 219	73.5
Martinair Holland (c)	Netherlands	94	..	-	..	95	..	-	..
Our Airlines (h)	Nauru	51	2 670	6 426	41.5	52	2 441	6 552	37.3
OzJet (i)	Indonesia	86	6 138	9 116	67.3	86	6 617	9 116	72.6
Pacific Air Express (c)	Solomon Islands	50	..	-	..	50	..	-	..
Pacific Blue	Fiji	609	85 278	109 620	77.8	609	87 363	109 620	79.7
"	Indonesia	54	4 152	9 720	42.7	55	7 485	9 900	75.6
"	New Zealand	2 064	271 556	371 520	73.1	2 066	287 145	371 880	77.2
"	Papua New Guinea	33	2 586	5 940	43.5	33	2 780	5 940	46.8
"	Solomon Islands	9	621	1 620	38.3	9	752	1 620	46.4
"	Tonga	104	11 462	18 720	61.2	104	11 103	18 720	59.3
"	Vanuatu	158	19 661	28 440	69.1	158	19 840	28 440	69.8
"	ALL SERVICES	3 031	395 316	545 580	72.5	3 034	416 468	546 120	76.3
Philippine Airlines	Philippines	271	58 573	81 973	71.5	271	56 339	81 973	68.7
Polynesian Blue	Western Samoa	165	17 935	29 700	60.4	166	17 893	29 880	59.9
Qantas Airways	Argentina	17	3 920	5 551	70.6	17	4 033	5 551	72.7
"	Canada	12	3 845	4 145	92.8	12	3 700	4 189	88.3
"	China	547	100 122	135 210	74.0	547	97 054	134 726	72.0
"	Fiji	1	316	411	76.9	..	..	..	..
"	Germany	415	138 206	147 107	93.9	379	131 612	147 800	89.0
"	Hong Kong (SAR)	1 256	298 690	368 371	81.1	1 259	262 783	367 320	71.5
"	India	157	33 051	37 683	87.7	157	30 268	37 594	80.5
"	Indonesia	396	61 298	79 212	77.4	397	57 195	79 483	72.0
"	Italy	6	2 157	2 694	80.1	6	1 798	2 666	67.4
"	Japan	1 368	263 649	343 934	76.7	1 371	263 220	344 748	76.4
"	Korea	12	2 033	2 724	74.6	13	2 257	3 021	74.7
"	New Caledonia	208	31 902	40 014	79.7	208	31 690	40 006	79.2
"	New Zealand	4 522	615 976	772 071	79.8	4 524	613 651	789 454	77.7
"	Philippines	209	44 205	47 816	92.4	209	38 766	47 796	81.1
"	Singapore	1 339	322 489	396 045	81.4	1 334	288 692	394 866	73.1
"	South Africa	267	88 405	98 938	89.4	268	80 078	98 072	81.7
"	Thailand	1	..	..	..	1	..	..	..
"	UK	1 453	463 103	527 404	87.8	1 452	466 414	526 468	88.6
"	United Arab Emirates	..	..	..	..	36	..	..	..
"	USA	2 500	646 040	799 170	80.8	2 494	657 837	805 079	81.7
"	ALL SERVICES	14 686	3 119 407	3 808 500	81.9	14 684	3 031 048	3 828 839	79.2
Royal Brunei Airlines	Brunei	714	74 141	133 727	55.4	682	73 033	127 343	57.4
"	New Zealand	157	15 570	31 392	49.6	187	12 684	37 485	33.8
"	ALL SERVICES	871	89 711	165 119	54.3	869	85 717	164 828	52.0
Silk Air (j)	Singapore	22	664	2 980	22.3	22	578	2 980	19.4

**TABLE 3 AIRLINE PASSENGER CAPACITY AND UTILISATION TO AND FROM AUSTRALIA BY OPERATOR: Year ended December 2008**

Scheduled Operator	Service to/from	Inbound				Outbound			
		No. of Flights	Pax Carried	Seats Available	Seat Utilisation %	No. of Flights	Pax Carried	Seats Available	Seat Utilisation %
Singapore Airlines	New Zealand	50	..	-	..	48	..	-	..
"	Singapore	4 982	1 386 995	1 639 330	84.6	4 982	1 327 967	1 639 287	81.0
"	ALL SERVICES	5 032	1 386 995	1 639 330	84.6	5 030	1 327 967	1 639 287	81.0
SkyAirWorld (k)	Solomon Islands	180	5 112	14 724	34.7	180	4 596	14 724	31.2
Solomon Airlines	Solomon Islands	194	11 279	26 886	42.0	194	13 295	26 886	49.4
South African Airways	South Africa	261	59 661	68 601	87.0	262	49 241	68 851	71.5
Tasman Cargo Airlines (c) (l)	New Zealand	219	..	-	..	221	..	-	..
Thai Airways International	Thailand	2 021	511 611	640 327	79.9	2 019	489 055	639 739	76.4
Tiger Airways	Singapore	659	88 165	118 620	74.3	660	83 487	118 800	70.3
United Airlines	USA	749	194 114	262 306	74.0	742	190 323	259 904	73.2
United Parcel Service (c)	Singapore	-	..	-	..	238	..	..	..
"	USA	302	..	..	..	-	..	-	..
"	ALL SERVICES	302	-	-	..	238	-	-	..
Vietnam Airlines (m)	Vietnam	370	93 509	124 995	74.8	368	94 714	124 319	76.2
Virgin Atlantic Airways	UK	363	82 664	111 078	74.4	363	77 212	111 078	69.5
<b>TOTAL</b>		<b>64 440</b>	<b>12 063 058</b>	<b>15 758 602</b>	<b>76.5</b>	<b>64 318</b>	<b>11 760 154</b>	<b>15 767 395</b>	<b>74.6</b>

**TABLE 3 AIRLINE PASSENGER CAPACITY AND UTILISATION TO AND FROM AUSTRALIA BY OPERATOR: Year ended December 2008**

---

Please refer to explanatory notes - paragraphs 4, 5, 7 and 14 in particular.

In addition to the above, please note the following regarding Seat Factors shown in this table:

Traffic shown in this table for Qantas Airways will differ from traffic shown in Tables 1 and 2 because of the inclusion in this table of total traffic into and ex Australia (for seat factor purposes) whereas Tables 1 and 2 include uplift/discharge traffic only.

All other airlines report uplift/discharge traffic only. Therefore, for other airlines operating via Australia, the seat factors shown here reflect the total seats on the aircraft but only the Australian uplift/discharge portion of passengers on the aircraft. The true seat factors for airlines that operate via Australia will most likely be higher than what is shown in this table.

For example, on Dubai-Sydney-Auckland services:

Seats on the Dubai-Sydney sector are taken up by Dubai-Sydney and Dubai-Auckland passengers. However, when calculating seat factors, only the Dubai-Sydney passengers are used.

Similarly, seats on the Sydney-Auckland sector are taken up by Sydney-Auckland and Dubai-Auckland passengers. However, when calculating seat factors, only the Sydney-Auckland passengers are used.

The following airlines are affected:

Emirates and Royal Brunei Airlines

(a) Nil operations to Sydney in September and November 2008.

(b) From November 2007 to February 2008, there were no "same flight number" services inbound to Australia from the USA corresponding to Melbourne-Auckland-Los Angeles services. This accounts for the difference between inbound and outbound services for New Zealand and USA.

(c) Freight flights only.

(d) Nil operations for November 2008.

(e) Service ceased March 2008.

(f) Reported as Lan Chile prior to December 2008.

(g) Service ceased December 2008.

(h) Reported as Air Nauru prior to December 2008. Data not received for August 2008 and onwards.

(i) Scheduled services commenced June 2008.

(j) Scheduled service commenced December 2007 and ceased May 2008.

(k) Service commenced March 2008.

(l) Reported as Asian Express Airlines prior to December 2008.

(m) No data received for inbound operations to Sydney for November 2008. See page 7 for other missing data.

**TABLE 4 SCHEDULED INTERNATIONAL AIRPORT TRAFFIC AND AIRCRAFT MOVEMENTS: Year ended December**

		Inbound		(%)	Outbound		(%)	Total		(%)	(%) of
		2007	2008	Change	2007	2008	Change	2007	2008	Change	TOTAL
Adelaide	Passengers	234 751	249 375	6.2	220 398	230 304	4.5	455 149	479 679	5.4	2.0
"	Freight (Tonnes)	8 930	8 884	-0.5	9 095	10 571	16.2	18 025	19 455	7.9	2.6
"	Aircraft Movements	1 526	1 662	8.9	1 522	1 662	9.2	3 048	3 324	9.1	2.3
Brisbane	Passengers	1 971 097	2 034 017	3.2	1 950 655	1 998 971	2.5	3 921 752	4 032 988	2.8	17.2
"	Freight (Tonnes)	43 868	42 971	-2.0	42 507	43 088	1.4	86 375	86 058	-0.4	11.4
"	Aircraft Movements	11 928	12 969	8.7	11 917	12 965	8.8	23 845	25 934	8.8	18.1
Cairns	Passengers	353 748	300 386	-15.1	348 300	295 075	-15.3	702 048	595 461	-15.2	2.5
"	Freight (Tonnes)	2 568	1 849	-28.0	4 948	3 833	-22.5	7 516	5 682	-24.4	0.8
"	Aircraft Movements	3 906	3 763	-3.7	3 900	3 769	-3.4	7 806	7 532	-3.5	5.3
Christmas Island (a)	Passengers	144	664	361.1	336	578	72.0	480	1 242	158.8	0.0
"	Freight (Tonnes)	8	64	695.9	0	0	364.6	8	65	692.5	0.0
"	Aircraft Movements	4	22	450.0	4	22	450.0	8	44	450.0	0.0
Darwin	Passengers	74 859	95 345	27.4	76 460	92 492	21.0	151 319	187 837	24.1	0.8
"	Freight (Tonnes)	64	245	281.3	164	47	-71.4	228	291	28.0	0.0
"	Aircraft Movements	1 584	2 103	32.8	1 584	2 103	32.8	3 168	4 206	32.8	2.9
Gold Coast/Coolangatta	Passengers	104 756	172 896	65.0	106 006	166 248	56.8	210 762	339 144	60.9	1.4
"	Freight (Tonnes)	144	723	401.7	7	448	>999.9	151	1 171	673.9	0.2
"	Aircraft Movements	845	1 290	52.7	841	1 288	53.2	1 686	2 578	52.9	1.8
Melbourne	Passengers	2 308 615	2 400 197	4.0	2 256 469	2 332 347	3.4	4 565 084	4 732 544	3.7	20.2
"	Freight (Tonnes)	111 958	109 616	-2.1	91 349	90 450	-1.0	203 307	200 065	-1.6	26.5
"	Aircraft Movements	12 129	12 942	6.7	12 104	12 921	6.7	24 233	25 863	6.7	18.0
Norfolk Island	Passengers	8 615	7 125	-17.3	8 662	7 286	-15.9	17 277	14 411	-16.6	0.1
"	Freight (Tonnes)	101	84	-17.2	13	8	-41.2	115	92	-20.0	0.0
"	Aircraft Movements	104	101	-2.9	104	102	-1.9	208	203	-2.4	0.1
Perth	Passengers	1 212 943	1 299 846	7.2	1 160 625	1 233 176	6.3	2 373 568	2 533 022	6.7	10.8
"	Freight (Tonnes)	34 801	34 666	-0.4	31 559	33 295	5.5	66 360	67 961	2.4	9.0
"	Aircraft Movements	5 996	6 716	12.0	5 996	6 706	11.8	11 992	13 422	11.9	9.4
Sydney	Passengers	5 207 278	5 321 262	2.2	5 170 962	5 227 666	1.1	10 378 240	10 548 928	1.6	45.0
"	Freight (Tonnes)	250 408	252 072	0.7	129 355	122 322	-5.4	379 763	374 394	-1.4	49.6
"	Aircraft Movements	29 322	30 164	2.9	29 214	30 072	2.9	58 536	60 236	2.9	42.0
TOTAL	Passengers	11 476 806	11 881 113	3.5	11 298 873	11 584 143	2.5	22 775 679	23 465 256	3.0	100.0
	Freight (Tonnes)	452 850	451 173	-0.4	308 998	304 062	-1.6	761 848	755 235	-0.9	100.0
	Aircraft Movements	67 344	71 732	6.5	67 186	71 610	6.6	134 530	143 342	6.6	100.0

(a) Scheduled services recommenced December 2007 and ceased May 2008.

**TABLE 5 SCHEDULED INTERNATIONAL TRAFFIC BY CITY PAIRS: Year ended December**

Foreign Port	Australian Port	Passengers						Freight (tonnes)					
		2007			2008			2007			2008		
		Inbound	Outbound	Total	Inbound	Outbound	Total	Inbound	Outbound	Total	Inbound	Outbound	Total
Auckland	Adelaide	31 057	33 065	64 122	31 640	33 805	65 445	222.3	276.2	498.5	228.2	261.4	489.6
Bombay	"	27	0	27	16	0	16	0.0	0.0	0.0	0.0	0.0	0.0
Denpasar	"	0	0	0	523	1 231	1 754	0.0	0.0	0.0	0.0	0.0	0.0
Hong Kong	"	28 004	19 600	47 604	39 906	28 388	68 294	709.5	914.6	1 624.1	1 319.5	1 399.4	2 718.9
Kuala Lumpur	"	47 977	46 905	94 882	45 053	43 721	88 774	2 000.8	707.1	2 707.9	1 986.2	1 243.6	3 229.8
Singapore	"	127 686	120 828	248 514	132 237	123 159	255 396	5 997.1	7 197.1	13 194.2	5 350.4	7 666.6	13 017.0
<b>Total</b>	<b>Adelaide</b>	<b>234 751</b>	<b>220 398</b>	<b>455 149</b>	<b>249 375</b>	<b>230 304</b>	<b>479 679</b>	<b>8 929.7</b>	<b>9 095.0</b>	<b>18 024.7</b>	<b>8 884.4</b>	<b>10 570.9</b>	<b>19 455.3</b>
Abu Dhabi	Brisbane	4 562	5 481	10 043	27 738	28 654	56 392	301.6	295.7	597.3	623.3	600.5	1 223.8
Anchorage	"	0	0	0	0	0	0	0.0	0.0	0.0	0.0	0.0	0.0
Apia	"	0	0	0	364	647	1 011	0.0	0.0	0.0	0.0	0.0	0.0
Auckland	"	405 462	409 397	814 859	413 011	413 859	826 870	9 471.0	6 767.8	16 238.8	8 644.9	7 507.9	16 152.8
Bahrain	"	0	0	0	0	0	0	102.5	104.1	206.6	0.0	0.0	0.0
Bandar Seri Begawan	"	13 905	14 443	28 348	35 381	35 133	70 514	409.2	976.2	1 385.4	746.2	1 116.1	1 862.4
Bangkok	"	63 702	72 452	136 154	58 027	66 141	124 168	2 220.9	1 938.6	4 159.5	2 516.0	1 954.0	4 470.0
Chicago	"	0	0	0	0	0	0	18.8	0.0	18.8	69.4	0.0	69.4
Christchurch	"	170 108	170 570	340 678	173 648	175 819	349 467	512.0	363.4	875.4	479.6	328.6	808.2
Denpasar	"	450	545	995	2 175	4 185	6 360	22.8	21.7	44.5	0.0	0.0	0.0
Dubai	"	79 963	81 466	161 429	74 536	75 603	150 139	1 736.6	2 004.5	3 741.1	1 740.5	2 044.1	3 784.6
Dunedin	"	19 365	19 260	38 625	17 459	16 618	34 077	0.0	0.0	0.0	0.1	0.2	0.3
Espiritu Santo	"	521	726	1 247	1 738	2 089	3 827	0.2	1.0	1.1	5.1	10.2	15.3
Frankfurt	"	0	0	0	0	0	0	22.4	0.0	22.4	26.2	0.0	26.2
Hamilton	"	18 137	18 851	36 988	15 375	15 725	31 100	0.0	0.0	0.0	1.5	0.5	2.0
Hong Kong	"	115 169	109 666	224 835	127 498	113 470	240 968	5 345.6	3 980.7	9 326.3	5 074.9	3 995.7	9 070.7
Honiara	"	16 235	16 541	32 776	17 946	19 612	37 558	152.0	1 089.8	1 241.8	166.1	749.8	915.9
Honolulu	"	0	0	0	181	177	358	0.0	0.0	0.0	0.4	0.0	0.4
Indianapolis	"	0	0	0	0	0	0	154.7	148.4	303.1	0.0	81.1	81.1
Jakarta	"	0	0	0	199	105	304	0.0	120.0	120.0	0.0	0.0	0.0
Kuala Lumpur	"	55 624	64 240	119 864	38 048	45 480	83 528	1 672.8	2 787.2	4 459.9	1 342.7	1 600.1	2 942.8
Los Angeles	"	84 623	89 955	174 578	99 486	99 477	198 963	911.1	813.0	1 724.0	1 017.4	795.9	1 813.2
Majuro	"	0	186	186	0	0	0	0.0	4.8	4.8	0.0	0.0	0.0
Manila	"	7 108	7 057	14 165	8 324	6 950	15 274	56.9	64.3	121.2	26.6	96.3	122.8
Nadi	"	72 993	75 270	148 263	89 212	90 492	179 704	203.3	454.2	657.5	182.9	481.1	664.0
Nagoya	"	0	0	0	61	0	61	0.0	0.0	0.0	0.0	0.0	0.0
Nauru	"	2 631	2 627	5 258	1 457	1 278	2 735	3.7	99.5	103.2	2.8	66.0	68.8
New York	"	2	0	2	2	0	2	28.4	8.2	36.6	0.0	0.0	0.0
Noumea	"	20 301	21 936	42 237	22 465	23 759	46 224	10.1	165.1	175.2	7.0	215.1	222.2
Osaka	"	59 463	16 127	75 590	39 046	11 595	50 641	281.4	164.0	445.4	96.8	0.0	96.8
Palmerston	"	20 282	19 952	40 234	3 518	3 349	6 867	0.0	0.0	0.0	0.0	0.0	0.0
Port Moresby	"	41 966	47 201	89 167	47 126	53 784	100 910	644.6	2 183.2	2 827.8	838.2	2 506.4	3 344.5
Port Vila	"	29 236	29 580	58 816	31 067	31 573	62 640	44.4	207.6	252.0	33.9	267.9	301.8
Queenstown	"	4 415	5 011	9 426	4 502	5 222	9 724	0.0	0.0	0.0	0.0	0.3	0.3
San Francisco	"	10	0	10	0	0	0	0.0	0.0	0.0	0.0	0.0	0.0
Seoul	"	53 354	47 215	100 569	44 967	41 335	86 302	1 291.7	1 310.3	2 602.0	838.1	1 015.7	1 853.8
Shanghai	"	1 749	2 719	4 468	1 849	806	2 655	0.0	2.5	2.5	5.4	4.7	10.1
Singapore	"	344 063	336 257	680 320	379 535	363 598	743 133	11 712.0	12 707.0	24 419.1	12 538.5	13 810.1	26 348.6
Taipei	"	65 685	66 731	132 416	64 362	61 646	126 008	2 858.8	875.5	3 734.3	2 116.1	777.2	2 893.3

**TABLE 5 SCHEDULED INTERNATIONAL TRAFFIC BY CITY PAIRS: Year ended December**

Foreign Port	Australian Port	Passengers						Freight (tonnes)					
		2007			2008			2007			2008		
		Inbound	Outbound	Total	Inbound	Outbound	Total	Inbound	Outbound	Total	Inbound	Outbound	Total
Tarawa	Brisbane	0	0	0	279	194	473	0.0	0.0	0.0	0.0	0.0	0.0
Tokyo	"	129 451	127 792	257 243	115 667	111 841	227 508	3 596.1	2 786.3	6 382.4	3 770.4	2 997.7	6 768.1
Toledo	"	0	0	0	0	0	0	0.0	0.0	0.0	0.0	0.0	0.0
Wellington	"	70 562	71 401	141 963	77 768	78 755	156 523	83.0	62.3	145.4	59.6	64.4	124.0
<b>Total</b>	<b>Brisbane</b>	1 971 097	1 950 655	3 921 752	2 034 017	1 998 971	4 032 988	43 868.4	42 507.0	86 375.4	42 970.5	43 087.6	86 058.1
Auckland	Cairns	25 159	27 667	52 826	23 574	26 261	49 835	152.6	351.7	504.3	152.9	67.7	220.7
Beijing	"	7	0	7	0	0	0	0.0	0.0	0.0	0.0	0.0	0.0
Guam	"	11 522	11 646	23 168	11 258	11 274	22 532	6.8	24.5	31.3	4.7	16.1	20.8
Hong Kong	"	26 582	25 117	51 699	30 095	28 351	58 446	350.7	2 720.1	3 070.8	434.6	2 717.2	3 151.8
Los Angeles	"	0	0	0	1	0	1	0.0	0.0	0.0	0.0	0.0	0.0
Nagoya	"	55 686	53 476	109 162	52 501	36 965	89 466	608.5	295.7	904.2	501.4	148.9	650.2
Osaka	"	48 544	49 193	97 737	22 761	39 867	62 628	961.2	814.2	1 775.4	372.2	385.8	758.1
Port Moresby	"	33 007	26 868	59 875	35 014	31 938	66 952	99.3	202.8	302.1	83.2	169.1	252.3
Sapporo	"	3 757	4 103	7 860	0	0	0	0.8	0.7	1.5	0.0	0.0	0.0
Singapore	"	29 414	36 551	65 965	25 884	26 138	52 022	27.1	9.4	36.4	53.5	16.8	70.3
Tokyo	"	120 070	113 679	233 749	99 298	94 281	193 579	360.8	529.5	890.3	246.6	311.4	557.9
<b>Total</b>	<b>Cairns</b>	353 748	348 300	702 048	300 386	295 075	595 461	2 567.9	4 948.5	7 516.4	1 849.2	3 833.0	5 682.1
Singapore	Christmas Island (a)	144	336	480	664	578	1 242	8.1	0.1	8.2	64.2	0.4	64.6
<b>Total</b>	<b>Christmas Island</b>	144	336	480	664	578	1 242	8.1	0.1	8.2	64.2	0.4	64.6
Anchorage	Darwin	0	0	0	0	0	0	0.0	0.0	0.0	0.0	0.0	0.0
Auckland	"	0	0	0	0	0	0	0.0	0.0	0.0	0.0	0.0	0.0
Bandar Seri Begawan	"	4 093	4 020	8 113	753	402	1 155	20.0	4.0	24.0	2.0	0.2	2.2
Bombay	"	0	3 871	3 871	0	250	250	0.0	31.1	31.1	0.0	0.9	0.9
Chengdu	"	0	0	0	0	0	0	0.0	0.0	0.0	0.0	0.0	0.0
Chicago	"	0	0	0	0	0	0	0.0	0.0	0.0	0.0	0.0	0.0
Denpasar	"	18 267	18 947	37 214	22 454	24 597	47 051	0.1	1.9	2.0	58.4	3.4	61.8
Dubai	"	0	0	0	0	0	0	0.0	0.0	0.0	0.0	0.0	0.0
Frankfurt	"	0	0	0	0	0	0	0.0	0.0	0.0	0.0	0.0	0.0
Ho Chi Minh City	"	0	0	0	1 358	2 542	3 900	0.0	0.0	0.0	51.2	4.0	55.3
Hong Kong	"	2	0	2	0	0	0	0.0	0.0	0.0	0.0	0.0	0.0
Kuala Lumpur	"	0	0	0	0	0	0	0.0	112.8	112.8	0.0	0.0	0.0
Kupang	"	1 340	1 579	2 919	390	505	895	0.0	0.1	0.1	0.0	0.0	0.0
London	"	1	0	1	0	0	0	0.0	0.0	0.0	0.0	0.0	0.0
New York	"	0	0	0	0	0	0	0.0	0.0	0.0	0.0	0.0	0.0
Shanghai	"	0	0	0	0	0	0	0.0	0.0	0.0	0.0	0.0	0.0
Sharjah	"	0	0	0	0	0	0	0.0	0.0	0.0	0.0	0.0	0.0
Singapore	"	51 156	48 043	99 199	70 390	64 196	134 586	44.0	13.7	57.7	133.1	38.2	171.3
Tianjin	"	0	0	0	0	0	0	0.0	0.0	0.0	0.0	0.0	0.0
<b>Total</b>	<b>Darwin</b>	74 859	76 460	151 319	95 345	92 492	187 837	64.2	163.5	227.7	244.6	46.8	291.5
Auckland	Gold Coast/Coolangatta	45 941	47 294	93 235	52 675	53 514	106 189	2.9	0.9	3.7	36.4	100.1	136.5
Christchurch	"	28 489	27 850	56 339	29 446	27 611	57 057	0.0	0.0	0.0	6.2	44.7	50.8
Hamilton	"	12 061	11 949	24 010	10 484	10 624	21 108	0.0	0.0	0.0	0.7	1.4	2.0
Kuala Lumpur	"	6 766	7 905	14 671	52 586	49 085	101 671	141.2	6.4	147.6	602.7	154.3	757.0
Nadi	"	0	0	0	362	600	962	0.0	0.0	0.0	0.0	0.0	0.0
Nagoya	"	0	0	0	111	0	111	0.0	0.0	0.0	0.0	0.0	0.0
Osaka	"	0	0	0	13 951	11 271	25 222	0.0	0.0	0.0	54.3	138.4	192.7

**TABLE 5 SCHEDULED INTERNATIONAL TRAFFIC BY CITY PAIRS: Year ended December**

Foreign Port	Australian Port	Passengers						Freight (tonnes)					
		2007			2008			2007			2008		
		Inbound	Outbound	Total	Inbound	Outbound	Total	Inbound	Outbound	Total	Inbound	Outbound	Total
Tokyo	Gold Coast/Coolangatta	209	0	209	2 399	2 572	4 971	0.0	0.0	0.0	13.5	8.0	21.5
Wellington	"	11 290	11 008	22 298	10 882	10 971	21 853	0.0	0.0	0.0	9.0	1.3	10.4
<b>Total</b>	<b>Gold Coast/Coolangatta</b>	104 756	106 006	210 762	172 896	166 248	339 144	144.1	7.3	151.3	722.8	448.2	1 170.9
Abuja	Melbourne	0	0	0	0	0	0	0.0	104.9	104.9	0.0	0.0	0.0
Anchorage	"	0	0	0	0	0	0	0.0	0.0	0.0	0.0	0.0	0.0
Auckland	"	350 613	352 710	703 323	361 083	349 579	710 662	15 165.1	16 265.7	31 430.8	14 494.0	13 392.5	27 886.5
Bahrain	"	0	0	0	0	0	0	0.0	0.0	0.0	0.0	0.0	0.0
Bangkok	"	192 016	190 170	382 186	194 477	189 761	384 238	9 149.7	6 608.6	15 758.3	9 372.6	7 049.9	16 422.5
Beijing	"	15 026	9 926	24 952	17 871	17 726	35 597	79.0	298.7	377.8	177.5	388.8	566.3
Bombay	"	73	0	73	0	0	0	0.0	0.0	0.0	0.0	0.0	0.0
Chengdu	"	0	0	0	0	0	0	0.0	0.0	0.0	0.0	305.8	305.8
Chicago	"	19	0	19	105	312	417	6 287.8	6.3	6 294.1	5 395.1	16.0	5 411.1
Christchurch	"	138 817	139 797	278 614	137 218	139 987	277 205	596.2	623.8	1 220.0	631.6	634.2	1 265.8
Denpasar	"	58 481	56 923	115 404	69 322	67 189	136 511	1 876.2	900.5	2 776.7	1 870.9	853.8	2 724.8
Dubai	"	145 774	145 353	291 127	153 638	147 757	301 395	5 606.0	7 481.2	13 087.2	6 165.4	7 321.9	13 487.3
Dunedin	"	4 631	4 543	9 174	4 034	4 020	8 054	0.0	0.0	0.0	0.0	0.0	0.0
Frankfurt	"	0	0	0	0	0	0	75.9	10.6	86.5	39.0	0.0	39.0
Guangzhou	"	21 560	16 207	37 767	21 727	18 836	40 563	492.9	66.6	559.5	494.9	66.3	561.2
Hamilton	"	2 925	2 809	5 734	0	0	0	0.0	0.0	0.0	0.0	0.0	0.0
Hanoi	"	4 771	5 946	10 717	4 794	6 050	10 844	0.0	19.5	19.5	0.0	29.5	29.5
Ho Chi Minh City	"	38 893	34 240	73 133	40 292	37 394	77 686	1 048.6	180.9	1 229.5	1 090.9	245.7	1 336.7
Hong Kong	"	196 454	205 274	401 728	254 058	247 393	501 451	17 354.0	14 752.7	32 106.7	19 865.1	15 707.1	35 572.3
Honolulu	"	15 371	14 687	30 058	130	2 363	2 493	402.1	75.1	477.2	0.0	0.2	0.2
Jakarta	"	0	212	212	0	0	0	0.0	0.6	0.6	0.0	0.0	0.0
Johannesburg	"	1	0	1	3	0	3	0.0	0.0	0.0	0.0	0.0	0.0
Kuala Lumpur	"	178 930	173 894	352 824	171 086	171 783	342 869	14 727.6	7 401.7	22 129.3	12 717.2	8 223.8	20 941.0
Lahore	"	0	0	0	0	0	0	0.0	0.0	0.0	0.0	92.3	92.3
London	"	114 409	115 130	229 539	106 106	107 629	213 735	1 676.4	502.7	2 179.1	1 583.4	557.2	2 140.6
Los Angeles	"	156 684	156 101	312 785	154 007	150 495	304 502	2 714.7	4 682.5	7 397.2	1 386.2	4 449.3	5 835.6
Louisville	"	0	0	0	0	0	0	0.0	0.0	0.0	6.7	0.0	6.7
Luxembourg	"	0	0	0	0	0	0	4 217.5	26.7	4 244.3	2 721.8	25.6	2 747.4
Manila	"	17 342	14 685	32 027	25 461	20 617	46 078	652.7	184.0	836.7	956.4	296.6	1 253.0
Mauritius	"	6 925	6 976	13 901	8 823	8 427	17 250	251.1	178.7	429.8	306.1	204.0	510.1
Milan	"	0	0	0	0	0	0	0.0	104.7	104.7	0.0	0.0	0.0
Nadi	"	34 906	34 600	69 506	40 435	38 446	78 881	897.7	1 321.7	2 219.4	779.3	1 145.1	1 924.4
New York	"	1 850	2 308	4 158	1 248	1 399	2 647	504.0	12.3	516.2	276.6	0.0	276.6
Noumea	"	0	0	0	0	0	0	0.0	30.4	30.4	0.0	0.0	0.0
Palmerston	"	2 908	2 509	5 417	0	0	0	0.0	0.0	0.0	0.0	0.0	0.0
Phuket	"	0	0	0	761	236	997	0.0	0.0	0.0	0.0	0.0	0.0
Port Vila	"	0	0	0	357	2 398	2 755	0.0	0.0	0.0	0.0	16.9	16.9
Queenstown	"	3 288	3 662	6 950	5 705	5 625	11 330	0.0	0.0	0.0	0.0	0.3	0.3
Rarotonga	"	103	581	684	655	655	1 310	0.0	0.0	0.0	0.2	0.2	0.4
San Francisco	"	8 755	9 129	17 884	5 654	5 141	10 795	338.2	54.3	392.5	359.8	7.3	367.1
Sapporo	"	867	695	1 562	0	0	0	0.0	0.2	0.2	0.0	0.0	0.0
Seoul	"	4 158	4 255	8 413	25 153	22 565	47 718	171.5	213.2	384.8	640.4	1 000.4	1 640.7
Shanghai	"	46 230	33 790	80 020	61 332	52 771	114 103	1 229.6	761.9	1 991.5	1 774.3	886.6	2 660.9

**TABLE 5 SCHEDULED INTERNATIONAL TRAFFIC BY CITY PAIRS: Year ended December**

Foreign Port	Australian Port	Passengers						Freight (tonnes)					
		2007			2008			2007			2008		
		Inbound	Outbound	Total	Inbound	Outbound	Total	Inbound	Outbound	Total	Inbound	Outbound	Total
Sharjah	Melbourne	0	0	0	0	0	0	0.0	0.0	0.0	0.0	0.0	0.0
Singapore	"	426 337	411 723	838 060	438 419	429 567	867 986	25 021.3	26 922.9	51 944.2	25 696.4	26 593.7	52 290.2
Tianjin	"	0	0	0	0	0	0	0.0	62.3	62.3	0.0	297.3	297.3
Tokyo	"	42 763	30 705	73 468	24 356	18 315	42 671	1 252.4	1 263.1	2 515.5	596.6	449.7	1 046.3
Vancouver	"	411	398	809	85	96	181	5.6	3.2	8.8	0.0	0.7	0.7
Vienna	"	5 853	6 898	12 751	0	0	0	0.0	0.0	0.0	0.0	0.0	0.0
Wellington	"	70 471	69 633	140 104	71 802	67 815	139 617	164.1	226.7	390.8	217.5	190.8	408.3
<b>Total</b>	<b>Melbourne</b>	2 308 615	2 256 469	4 565 084	2 400 197	2 332 347	4 732 544	111 957.9	91 349.1	203 307.0	109 615.8	90 449.7	200 065.5
Auckland	Norfolk Island	8 615	8 662	17 277	7 125	7 286	14 411	101.4	13.2	114.6	84.0	7.8	91.7
<b>Total</b>	<b>Norfolk Island</b>	8 615	8 662	17 277	7 125	7 286	14 411	101.4	13.2	114.6	84.0	7.8	91.7
Anchorage	Perth	0	0	0	0	0	0	0.0	0.0	0.0	0.0	0.0	0.0
Auckland	"	61 280	60 134	121 414	62 442	60 132	122 574	2 444.0	1 272.3	3 716.3	2 265.7	1 090.8	3 356.5
Bahrain	"	0	0	0	0	0	0	0.0	0.0	0.0	0.0	0.0	0.0
Bandar Seri Begawan	"	26 872	25 034	51 906	30 089	30 460	60 549	179.0	449.7	628.8	149.2	333.1	482.3
Bangkok	"	69 158	44 373	113 531	69 681	41 906	111 587	1 263.7	1 228.3	2 492.1	1 567.6	1 277.3	2 844.9
Bombay	"	1	0	1	0	0	0	0.0	0.0	0.0	0.0	0.0	0.0
Chicago	"	0	0	0	0	0	0	0.0	0.0	0.0	0.0	0.0	0.0
Christchurch	"	0	0	0	0	0	0	88.0	0.0	88.0	0.0	0.0	0.0
Denpasar	"	89 303	91 849	181 152	137 476	141 051	278 527	82.9	24.1	106.9	114.3	30.9	145.2
Dubai	"	169 461	158 798	328 259	161 885	150 892	312 777	4 324.0	4 013.8	8 337.8	4 905.4	5 464.9	10 370.3
Durban	"	0	0	0	0	0	0	1.2	0.0	1.2	34.2	0.0	34.2
Frankfurt	"	0	0	0	0	0	0	0.0	0.0	0.0	0.0	0.0	0.0
Hong Kong	"	79 150	73 048	152 198	98 431	86 258	184 689	3 091.5	2 615.1	5 706.6	3 664.9	2 754.0	6 419.0
Jakarta	"	28 613	27 380	55 993	28 006	28 621	56 627	106.1	28.1	134.2	58.1	43.1	101.2
Johannesburg	"	54 901	48 952	103 853	59 987	49 522	109 509	748.9	2 084.7	2 833.6	556.3	1 681.6	2 237.9
Kuala Lumpur	"	107 856	108 196	216 052	106 023	110 715	216 738	4 373.0	1 452.1	5 825.1	4 298.1	1 519.7	5 817.8
Mauritius	"	19 347	19 393	38 740	21 206	19 822	41 028	489.4	414.2	903.6	471.7	721.9	1 193.6
Mombasa	"	0	0	0	0	0	0	99.4	0.0	99.4	0.0	0.0	0.0
New York	"	0	0	0	0	0	0	0.0	0.0	0.0	0.0	0.0	0.0
Phuket	"	0	24 603	24 603	0	25 921	25 921	0.0	32.2	32.2	0.0	31.8	31.8
Shanghai	"	0	0	0	0	0	0	0.0	0.0	0.0	0.0	0.0	0.0
Singapore	"	478 597	450 660	929 257	497 051	459 267	956 318	16 774.9	17 176.9	33 951.7	15 754.7	17 538.4	33 293.1
Tianjin	"	0	0	0	0	0	0	0.0	0.0	0.0	0.0	105.4	105.4
Tokyo	"	28 404	28 205	56 609	27 569	28 609	56 178	735.1	767.5	1 502.6	825.7	702.2	1 527.9
<b>Total</b>	<b>Perth</b>	1 212 943	1 160 625	2 373 568	1 299 846	1 233 176	2 533 022	34 801.0	31 559.1	66 360.1	34 665.8	33 295.1	67 961.0
Abu Dhabi	Sydney	41 978	42 749	84 727	83 667	87 486	171 153	1 892.4	2 418.4	4 310.9	2 805.0	3 594.6	6 399.6
Abuja	"	0	0	0	0	0	0	0.0	0.0	0.0	0.0	0.0	0.0
Amsterdam	"	0	0	0	0	0	0	7 897.5	1 488.8	9 386.3	7 122.6	1 595.1	8 717.6
Anchorage	"	0	0	0	0	0	0	0.0	0.0	0.0	0.0	0.0	0.0
Apia	"	16 968	17 385	34 353	17 571	17 246	34 817	22.8	35.4	58.2	9.8	16.7	26.5
Auckland	"	612 372	619 023	1 231 395	607 203	618 373	1 225 576	24 673.6	34 281.3	58 954.8	23 736.1	34 000.3	57 736.4
Bahrain	"	17 458	17 585	35 043	0	0	0	513.4	709.3	1 222.7	0.0	22.5	22.5
Bandar Seri Begawan	"	19 488	16 660	36 148	7 918	7 038	14 956	974.0	725.4	1 699.4	386.7	267.8	654.6
Bangkok	"	333 979	292 150	626 129	338 135	299 544	637 679	12 103.0	4 168.2	16 271.3	13 949.3	5 259.8	19 209.1
Beijing	"	63 688	63 607	127 295	83 478	78 112	161 590	758.2	1 067.2	1 825.4	942.5	1 179.3	2 121.8
Bombay	"	34 108	26 802	60 910	31 163	27 553	58 716	375.0	452.5	827.5	665.8	304.8	970.6



**TABLE 5 SCHEDULED INTERNATIONAL TRAFFIC BY CITY PAIRS: Year ended December**

Foreign Port	Australian Port	Passengers						Freight (tonnes)					
		2007			2008			2007			2008		
		Inbound	Outbound	Total	Inbound	Outbound	Total	Inbound	Outbound	Total	Inbound	Outbound	Total
Buenos Aires	Sydney	21 237	18 892	40 129	27 650	26 393	54 043	100.7	203.1	303.8	163.8	230.9	394.7
Chengdu	"	0	0	0	0	0	0	0.0	0.0	0.0	0.0	0.0	0.0
Chicago	"	10 717	10 606	21 323	7 261	7 236	14 497	7 091.3	122.7	7 214.0	8 144.9	66.0	8 210.9
Christchurch	"	273 108	263 841	536 949	275 784	265 761	541 545	6 416.6	4 799.8	11 216.5	6 328.7	4 450.3	10 779.0
Denpasar	"	81 344	83 648	164 992	112 402	113 830	226 232	2 733.3	721.2	3 454.5	3 526.8	758.8	4 285.6
Dohar	"	0	0	0	0	0	0	0.0	102.0	102.0	0.0	0.0	0.0
Dubai	"	137 399	140 436	277 835	139 166	136 363	275 529	6 087.0	4 015.5	10 102.5	6 442.0	3 479.2	9 921.3
Dunedin	"	12 475	12 588	25 063	12 134	11 451	23 585	0.0	0.0	0.0	0.1	0.6	0.7
Durban	"	0	0	0	0	0	0	0.0	181.5	181.5	0.0	99.5	99.5
Frankfurt	"	46 702	48 417	95 119	54 332	54 749	109 081	5 378.6	196.2	5 574.7	4 559.6	578.7	5 138.3
Guangzhou	"	48 346	47 489	95 835	44 605	42 862	87 467	2 572.4	183.2	2 755.6	2 275.4	140.6	2 416.0
Hamilton	"	14 294	14 973	29 267	11 681	11 790	23 471	0.0	0.0	0.0	2.6	0.0	2.6
Hanoi	"	9 472	9 728	19 200	8 847	10 454	19 301	0.0	2.9	2.9	4.5	16.5	21.0
Ho Chi Minh City	"	71 971	69 452	141 423	71 334	71 894	143 228	3 156.4	545.5	3 701.9	2 352.7	501.9	2 854.5
Hong Kong	"	464 907	439 358	904 265	476 019	439 153	915 172	32 407.9	13 113.0	45 520.9	34 285.4	11 069.3	45 354.8
Honolulu	"	111 029	106 650	217 679	125 950	119 723	245 673	3 436.4	3 577.3	7 013.8	2 230.1	1 650.0	3 880.1
Indianapolis	"	0	0	0	0	0	0	0.0	0.0	0.0	0.0	0.0	0.0
Jakarta	"	37 195	35 978	73 173	35 927	34 311	70 238	827.4	973.5	1 800.9	851.4	1 042.0	1 893.4
Jeju	"	0	0	0	0	0	0	0.0	0.0	0.0	0.0	0.0	0.0
Johannesburg	"	74 985	66 947	141 932	77 849	71 305	149 154	1 424.7	473.0	1 897.8	1 340.6	522.2	1 862.8
Kuala Lumpur	"	180 835	168 948	349 783	158 246	153 302	311 548	22 188.5	4 186.6	26 375.1	17 645.8	4 076.0	21 721.8
Lahore	"	0	0	0	0	0	0	0.0	0.0	0.0	0.0	0.0	0.0
London	"	274 895	284 611	559 506	270 271	269 902	540 173	9 238.5	2 851.0	12 089.5	8 741.4	2 571.0	11 312.4
Los Angeles	"	299 268	298 930	598 198	267 715	267 757	535 472	16 348.6	4 649.2	20 997.8	13 865.2	3 711.2	17 576.5
Louisville	"	0	0	0	0	0	0	11 050.1	0.0	11 050.1	14 741.4	0.0	14 741.4
Manchester	"	0	0	0	180	0	180	0.0	0.0	0.0	0.0	0.0	0.0
Manila	"	56 819	57 100	113 919	64 151	64 945	129 096	1 533.9	876.5	2 410.3	1 721.4	854.4	2 575.9
Mauritius	"	7 944	6 456	14 400	7 256	5 794	13 050	213.7	141.8	355.5	148.1	73.3	221.3
Milan	"	0	0	0	0	0	0	0.0	0.0	0.0	0.0	0.0	0.0
Nadi	"	144 941	142 374	287 315	171 130	162 939	334 069	2 782.7	2 213.7	4 996.4	2 674.6	2 241.2	4 915.8
Nagoya	"	190	636	826	920	1 914	2 834	268.8	127.5	396.3	109.0	6.6	115.6
New York	"	35 608	35 493	71 101	38 215	37 631	75 846	6 258.7	204.5	6 463.2	5 801.5	370.2	6 171.7
Noumea	"	49 370	47 342	96 712	51 933	50 696	102 629	62.8	798.7	861.5	65.0	863.7	928.7
Osaka	"	26 610	65 738	92 348	24 485	55 329	79 814	1 703.6	1 403.9	3 107.5	1 587.5	1 253.5	2 841.0
Palmerston	"	11 505	11 484	22 989	2 830	2 628	5 458	0.0	0.0	0.0	0.0	0.0	0.0
Papeete	"	21 738	21 630	43 368	17 880	18 875	36 755	904.1	722.2	1 626.3	626.1	740.1	1 366.1
Phuket	"	38 302	38 724	77 026	40 181	39 475	79 656	826.9	20.9	847.8	636.5	32.0	668.5
Port Moresby	"	7 669	9 907	17 576	9 199	9 396	18 595	160.1	172.1	332.2	46.6	18.0	64.6
Port Vila	"	27 276	26 575	53 851	32 039	28 923	60 962	119.8	274.2	394.0	95.8	298.1	393.8
Queenstown	"	19 276	20 003	39 279	23 053	24 615	47 668	0.0	0.7	0.7	0.0	0.0	0.0
Rarotonga	"	401	0	401	0	0	0	0.0	0.0	0.0	0.0	0.0	0.0
Rome	"	0	0	0	1 569	1 424	2 993	0.0	0.0	0.0	9.8	0.3	10.1
San Francisco	"	136 963	147 094	284 057	142 340	151 278	293 618	1 206.5	3 886.6	5 093.2	1 890.7	3 606.7	5 497.5
Santiago	"	36 172	37 222	73 394	38 668	42 299	80 967	2 443.8	1 105.4	3 549.1	3 284.5	1 102.3	4 386.8
Sapporo	"	0	0	0	0	0	0	0.0	36.9	36.9	0.0	0.0	0.0
Seoul	"	179 574	177 592	357 166	174 119	175 896	350 015	12 670.0	7 449.6	20 119.6	12 376.6	5 268.5	17 645.1

**TABLE 5 SCHEDULED INTERNATIONAL TRAFFIC BY CITY PAIRS: Year ended December**

Foreign Port	Australian Port	Passengers						Freight (tonnes)					
		2007			2008			2007			2008		
		Inbound	Outbound	Total	Inbound	Outbound	Total	Inbound	Outbound	Total	Inbound	Outbound	Total
Shanghai	Sydney	124 298	118 323	242 621	114 070	107 887	221 957	7 931.4	1 362.1	9 293.4	8 547.1	1 746.7	10 293.8
Sharjah	"	0	0	0	0	0	0	0.0	337.0	337.0	0.0	150.8	150.8
Singapore	"	509 401	489 675	999 076	557 738	527 252	1 084 990	22 436.9	14 913.9	37 350.8	25 202.7	14 196.7	39 399.4
Subic Bay	"	0	0	0	0	0	0	0.0	1 860.2	1 860.2	0.0	1 549.2	1 549.2
Suva	"	2 694	3 438	6 132	0	0	0	0.2	5.7	5.8	0.0	0.0	0.0
Taipei	"	43 987	47 677	91 664	49 068	51 253	100 321	651.3	306.4	957.8	496.0	221.4	717.5
Tianjin	"	0	0	0	0	0	0	0.0	0.0	0.0	0.0	0.0	0.0
Tokyo	"	222 237	243 915	466 152	206 491	211 452	417 943	5 914.7	4 459.9	10 374.6	4 327.3	3 718.2	8 045.5
Toledo	"	0	0	0	0	0	0	2 231.6	0.0	2 231.6	1 847.5	0.0	1 847.5
Tongatapu	"	10 237	10 687	20 924	11 462	11 103	22 565	35.6	18.2	53.8	20.3	14.4	34.8
Toronto	"	788	609	1 397	14 719	14 300	29 019	11.3	0.0	11.3	190.6	27.9	218.5
Vancouver	"	49 803	55 311	105 114	60 064	61 916	121 980	70.3	83.7	154.1	2 916.1	2 368.4	5 284.5
Vienna	"	11 933	13 882	25 815	0	0	0	0.0	0.0	0.0	0.0	0.0	0.0
Wellington	"	121 324	124 622	245 946	121 194	124 858	246 052	301.1	328.6	629.7	330.6	393.8	724.4
<b>Total</b>	<b>Sydney</b>	<b>5 207 278</b>	<b>5 170 962</b>	<b>10 378 240</b>	<b>5 321 262</b>	<b>5 227 666</b>	<b>10 548 928</b>	<b>250 407.9</b>	<b>129 354.9</b>	<b>379 762.7</b>	<b>252 072.1</b>	<b>122 322.2</b>	<b>374 394.3</b>
Abu Dhabi	Australia	46 540	48 230	94 770	111 405	116 140	227 545	2 194.0	2 714.1	4 908.2	3 428.2	4 195.1	7 623.4
Abuja	"	0	0	0	0	0	0	0.0	104.9	104.9	0.0	0.0	0.0
Amsterdam	"	0	0	0	0	0	0	7 897.5	1 488.8	9 386.3	7 122.6	1 595.1	8 717.6
Anchorage	"	0	0	0	0	0	0	0.0	0.0	0.0	0.0	0.0	0.0
Apia	"	16 968	17 385	34 353	17 935	17 893	35 828	22.8	35.4	58.2	9.8	16.7	26.5
Auckland	"	1 540 499	1 557 952	3 098 451	1 558 753	1 562 809	3 121 562	52 232.8	59 229.1	111 461.9	49 642.3	56 428.4	106 070.7
Bahrain	"	17 458	17 585	35 043	0	0	0	615.9	813.4	1 429.3	0.0	22.5	22.5
Bandar Seri Begawan	"	64 358	60 157	124 515	74 141	73 033	147 174	1 582.2	2 155.4	3 737.6	1 284.1	1 717.3	3 001.4
Bangkok	"	658 855	599 145	1 258 000	660 320	597 352	1 257 672	24 737.4	13 943.8	38 681.2	27 405.5	15 541.0	42 946.5
Beijing	"	78 721	73 533	152 254	101 349	95 838	197 187	837.2	1 365.9	2 203.1	1 120.0	1 568.1	2 688.1
Bombay	"	34 209	30 673	64 882	31 179	27 803	58 982	375.0	483.6	858.6	665.8	305.8	971.5
Buenos Aires	"	21 237	18 892	40 129	27 650	26 393	54 043	100.7	203.1	303.8	163.8	230.9	394.7
Chengdu	"	0	0	0	0	0	0	0.0	0.0	0.0	0.0	305.8	305.8
Chicago	"	10 736	10 606	21 342	7 366	7 548	14 914	13 397.8	129.0	13 526.8	13 609.4	82.0	13 691.4
Christchurch	"	610 522	602 058	1 212 580	616 096	609 178	1 225 274	7 612.7	5 787.1	13 399.8	7 446.1	5 457.7	12 903.8
Denpasar	"	247 845	251 912	499 757	344 352	352 083	696 435	4 715.2	1 669.4	6 384.6	5 570.4	1 646.9	7 217.4
Dohar	"	0	0	0	0	0	0	0.0	102.0	102.0	0.0	0.0	0.0
Dubai	"	532 597	526 053	1 058 650	529 225	510 615	1 039 840	17 753.6	17 515.0	35 268.6	19 253.3	18 310.1	37 563.4
Dunedin	"	36 471	36 391	72 862	33 627	32 089	65 716	0.0	0.0	0.0	0.2	0.7	0.9
Durban	"	0	0	0	0	0	0	1.2	181.5	182.7	34.2	99.5	133.7
Espiritu Santo	"	521	726	1 247	1 738	2 089	3 827	0.2	1.0	1.1	5.1	10.2	15.3
Frankfurt	"	46 702	48 417	95 119	54 332	54 749	109 081	5 476.9	206.8	5 683.7	4 624.8	578.7	5 203.5
Guam	"	11 522	11 646	23 168	11 258	11 274	22 532	6.8	24.5	31.3	4.7	16.1	20.8
Guangzhou	"	69 906	63 696	133 602	66 332	61 698	128 030	3 065.4	249.8	3 315.2	2 770.3	206.9	2 977.2
Hamilton	"	47 417	48 582	95 999	37 540	38 139	75 679	0.0	0.0	0.0	4.8	1.9	6.7
Hanoi	"	14 243	15 674	29 917	13 641	16 504	30 145	0.0	22.4	22.4	4.5	46.0	50.5
Ho Chi Minh City	"	110 864	103 692	214 556	112 984	111 830	224 814	4 204.9	726.4	4 931.4	3 494.8	751.6	4 246.5
Hong Kong	"	910 268	872 063	1 782 331	1 026 007	943 013	1 969 020	59 259.1	38 096.3	97 355.3	64 644.6	37 642.8	102 287.4
Honiara	"	16 235	16 541	32 776	17 946	19 612	37 558	152.0	1 089.8	1 241.8	166.1	749.8	915.9
Honolulu	"	126 400	121 337	247 737	126 261	122 263	248 524	3 838.5	3 652.5	7 491.0	2 230.5	1 650.2	3 880.7
Indianapolis	"	0	0	0	0	0	0	154.7	148.4	303.1	0.0	81.1	81.1

**TABLE 5 SCHEDULED INTERNATIONAL TRAFFIC BY CITY PAIRS: Year ended December**

Foreign Port	Australian Port	Passengers						Freight (tonnes)					
		2007			2008			2007			2008		
		Inbound	Outbound	Total	Inbound	Outbound	Total	Inbound	Outbound	Total	Inbound	Outbound	Total
Jakarta	Australia	65 808	63 570	129 378	64 132	63 037	127 169	933.6	1 122.1	2 055.7	909.6	1 085.1	1 994.7
Jeju	"	0	0	0	0	0	0	0.0	0.0	0.0	0.0	0.0	0.0
Johannesburg	"	129 887	115 899	245 786	137 839	120 827	258 666	2 173.6	2 557.7	4 731.3	1 896.8	2 203.8	4 100.7
Kuala Lumpur	"	577 988	570 088	1 148 076	571 042	574 086	1 145 128	45 103.9	16 653.9	61 757.8	38 592.7	16 817.5	55 410.2
Kupang	"	1 340	1 579	2 919	390	505	895	0.0	0.1	0.1	0.0	0.0	0.0
Lahore	"	0	0	0	0	0	0	0.0	0.0	0.0	0.0	92.3	92.3
London	"	389 305	399 741	789 046	376 377	377 531	753 908	10 914.9	3 353.7	14 268.6	10 324.7	3 128.3	13 453.0
Los Angeles	"	540 575	544 986	1 085 561	521 209	517 729	1 038 938	19 974.4	10 144.8	30 119.1	16 268.9	8 956.4	25 225.3
Louisville	"	0	0	0	0	0	0	11 050.1	0.0	11 050.1	14 748.1	0.0	14 748.1
Luxembourg	"	0	0	0	0	0	0	4 217.5	26.7	4 244.3	2 721.8	25.6	2 747.4
Majuro	"	0	186	186	0	0	0	0.0	4.8	4.8	0.0	0.0	0.0
Manchester	"	0	0	0	180	0	180	0.0	0.0	0.0	0.0	0.0	0.0
Manila	"	81 269	78 842	160 111	97 936	92 512	190 448	2 243.4	1 124.8	3 368.2	2 704.4	1 247.3	3 951.7
Mauritius	"	34 216	32 825	67 041	37 285	34 043	71 328	954.2	734.7	1 688.9	925.9	999.2	1 925.1
Milan	"	0	0	0	0	0	0	0.0	104.7	104.7	0.0	0.0	0.0
Mombasa	"	0	0	0	0	0	0	99.4	0.0	99.4	0.0	0.0	0.0
Nadi	"	252 840	252 244	505 084	301 139	292 477	593 616	3 883.7	3 989.6	7 873.4	3 636.8	3 867.3	7 504.1
Nagoya	"	55 876	54 112	109 988	53 593	38 879	92 472	877.4	423.2	1 300.6	610.4	155.5	765.8
Nauru	"	2 631	2 627	5 258	1 457	1 278	2 735	3.7	99.5	103.2	2.8	66.0	68.8
New York	"	37 460	37 801	75 261	39 465	39 030	78 495	6 791.0	224.9	7 015.9	6 078.1	370.2	6 448.3
Noumea	"	69 671	69 278	138 949	74 398	74 455	148 853	72.9	994.2	1 067.2	72.0	1 078.8	1 150.9
Osaka	"	134 617	131 058	265 675	100 243	118 062	218 305	2 946.2	2 382.1	5 328.3	2 110.8	1 777.8	3 888.5
Palmerston	"	34 695	33 945	68 640	6 348	5 977	12 325	0.0	0.0	0.0	0.0	0.0	0.0
Papeete	"	21 738	21 630	43 368	17 880	18 875	36 755	904.1	722.2	1 626.3	626.1	740.1	1 366.1
Phuket	"	38 302	63 327	101 629	40 942	65 632	106 574	826.9	53.1	880.0	636.5	63.7	700.3
Port Moresby	"	82 642	83 976	166 618	91 339	95 118	186 457	904.1	2 558.1	3 462.2	968.0	2 693.5	3 661.4
Port Vila	"	56 512	56 155	112 667	63 463	62 894	126 357	164.2	481.8	646.0	129.7	582.8	712.5
Queenstown	"	26 979	28 676	55 655	33 260	35 462	68 722	0.0	0.7	0.7	0.0	0.6	0.6
Rarotonga	"	504	581	1 085	655	655	1 310	0.0	0.0	0.0	0.2	0.2	0.4
Rome	"	0	0	0	1 569	1 424	2 993	0.0	0.0	0.0	9.8	0.3	10.1
San Francisco	"	145 728	156 223	301 951	147 994	156 419	304 413	1 544.7	3 940.9	5 485.7	2 250.5	3 614.0	5 864.5
Santiago	"	36 172	37 222	73 394	38 668	42 299	80 967	2 443.8	1 105.4	3 549.1	3 284.5	1 102.3	4 386.8
Sapporo	"	4 624	4 798	9 422	0	0	0	0.8	37.8	38.7	0.0	0.0	0.0
Seoul	"	237 086	229 062	466 148	244 239	239 796	484 035	14 133.2	8 973.1	23 106.3	13 855.1	7 284.6	21 139.6
Shanghai	"	172 277	154 832	327 109	177 251	161 464	338 715	9 161.0	2 126.5	11 287.4	10 326.8	2 638.0	12 964.8
Sharjah	"	0	0	0	0	0	0	0.0	337.0	337.0	0.0	150.8	150.8
Singapore	"	1 966 798	1 894 073	3 860 871	2 101 918	1 993 755	4 095 673	82 021.4	78 940.9	160 962.3	84 793.6	79 860.9	164 654.5
Subic Bay	"	0	0	0	0	0	0	0.0	1 860.2	1 860.2	0.0	1 549.2	1 549.2
Suva	"	2 694	3 438	6 132	0	0	0	0.2	5.7	5.8	0.0	0.0	0.0
Taipei	"	109 672	114 408	224 080	113 430	112 899	226 329	3 510.1	1 182.0	4 692.1	2 612.1	998.7	3 610.8
Tarawa	"	0	0	0	279	194	473	0.0	0.0	0.0	0.0	0.0	0.0
Tianjin	"	0	0	0	0	0	0	0.0	62.3	62.3	0.0	402.7	402.7
Tokyo	"	543 134	544 296	1 087 430	475 780	467 070	942 850	11 859.1	9 806.3	21 665.3	9 780.0	8 187.2	17 967.1
Toledo	"	0	0	0	0	0	0	2 231.6	0.0	2 231.6	1 847.5	0.0	1 847.5
Tongatapu	"	10 237	10 687	20 924	11 462	11 103	22 565	35.6	18.2	53.8	20.3	14.4	34.8
Toronto	"	788	609	1 397	14 719	14 300	29 019	11.3	0.0	11.3	190.6	27.9	218.5

**TABLE 5 SCHEDULED INTERNATIONAL TRAFFIC BY CITY PAIRS: Year ended December**

Foreign Port	Australian Port	Passengers						Freight (tonnes)					
		2007			2008			2007			2008		
		Inbound	Outbound	Total	Inbound	Outbound	Total	Inbound	Outbound	Total	Inbound	Outbound	Total
Vancouver	Australia	50 214	55 709	105 923	60 149	62 012	122 161	76.0	86.9	162.8	2 916.1	2 369.1	5 285.2
Vienna	"	17 786	20 780	38 566	0	0	0	0.0	0.0	0.0	0.0	0.0	0.0
Wellington	"	273 647	276 664	550 311	281 646	282 399	564 045	548.2	617.7	1 165.9	616.8	650.4	1 267.1
<b>Total</b>	<b>Australia</b>	11 476 806	11 298 873	22 775 679	11 881 113	11 584 143	23 465 256	452 850.5	308 997.6	761 848.1	451 173.5	304 061.6	755 235.0

Please refer to explanatory notes - paragraphs 3, 8 and 13 in particular.

(a) Scheduled services recommenced December 2007 and ceased May 2008.

**TABLE 6 INTERNATIONAL AIRLINES OWN STOPOVER REVENUE PASSENGERS,  
AUSTRALIAN CITY PAIRS: Year ended December 2008**

City Pair Route	Total Passengers
Melbourne/Sydney	28 590
Brisbane/Cairns	2 135
Brisbane/Sydney	334
Adelaide/Melbourne	288
<b>TOTAL</b>	<b>31 347</b>

Notes:

1. Own Stopover Revenue Passengers : The aggregate of revenue passengers uplifted at one Australian airport and discharged (excluding transit passengers) at another Australian airport by the same foreign registered international airline on which they entered or left Australia.
2. City Pair Route represents the aggregation of passengers travelling in both directions.
3. This data is additional to the information presented in tables 1-5 which cover only those passengers travelling to/from overseas airports.

**TABLE 7 TOTAL AIRCRAFT MOVEMENTS AT AUSTRALIAN INTERNATIONAL AIRPORTS BY AIRCRAFT TYPES: Year ended December 2008**

Airport	Passenger Aircraft															Freighters			All Types
	310	32S	330	340	380	737	747	757	767	777	100	DH8	E70/90	ER4	Other	72F/73F	74F	M1F	
Adelaide		591	1 352			19	10		10	1 172							170		3 324
Brisbane	82	4 327	3 624	105		7 094	2 493	374	2 357	4 674	58		510	2		212	22		25 934
Cairns		1 011	1 520			218	2		2 810	42	789	818	1	320	1				7 532
Christmas Island		44																	44
Darwin		3 504	34			266	4		6				285		93		14		4 206
Gold Coast/Coolangatta		1 398	755			424			1										2 578
Melbourne		3 605	5 886	1 680	30	2 131	4 744		1 011	5 709							1 067		25 863
Norfolk Island		48				155													203
Perth		1 326	3 020	1 642		2 764	75		1 190	3 378							27		13 422
Sydney	22	6 364	11 891	4 370	748	4 643	13 123	110	8 158	7 509	4		46			440	1 742	1 066	60 236
<b>Total</b>	<b>104</b>	<b>22 218</b>	<b>28 082</b>	<b>7 797</b>	<b>778</b>	<b>17 714</b>	<b>20 451</b>	<b>484</b>	<b>15 543</b>	<b>22 484</b>	<b>851</b>	<b>818</b>	<b>842</b>	<b>322</b>	<b>94</b>	<b>652</b>	<b>3 042</b>	<b>1 066</b>	<b>143 342</b>
% of All Types	0.1%	15.5%	19.6%	5.4%	0.5%	12.4%	14.3%	0.3%	10.8%	15.7%	0.6%	0.6%	0.6%	0.2%	0.1%	0.5%	2.1%	0.7%	100.0%

**NOTE:**

These figures only cover scheduled operations of the airlines listed in this publication. Charter/ferry operations are not included.

**Aircraft Types (all series)**

Airbus	310	32S	330	340	380			
Boeing	737	747	757	767	777	72F	73F	74F
De Havilland	DH8							
Embraer	EM2	E70	E90	ER4				
Fokker	100	F28						
McDonnell Douglas	M1F							