



**Australian Government**

**Department of Transport and Regional Services**

**Bureau of Transport and Regional Economics**



otre

## AVIATION STATISTICS

### International Scheduled Air Transport 2005

IAA 121

© Commonwealth of Australia

Canberra

May 2006

ISSN 1324-5074

This work is copyright and the data contained in this publication should not be reproduced or used in any form without acknowledgement.

Inquiries

Should you require additional information about the statistics contained in this publication, please contact Mrs Betty Kell in Canberra by telephone (02) 6274 7791 or by facsimile (02) 6274 7727 or write to:

Aviation Statistics, Bureau of Transport and Regional Economics  
Department of Transport and Regional Services  
GPO Box 594  
Canberra ACT 2601

Electronic mail: [AVSTATS@dotars.gov.au](mailto:AVSTATS@dotars.gov.au)

Web site: [www.btre.gov.au/statistics/statsindex.aspx](http://www.btre.gov.au/statistics/statsindex.aspx)

# CONTENTS

Explanatory Notes ..... iv-vi

Data Issues and Airlines Commencing/Withdrawing Services..... vii

Highlights .....viii-xv

Detailed Monthly Tables

- 1. Scheduled International Air Traffic to and from Australia ..... 1-3
- 2. Scheduled Operator Market Shares and Growth..... 4-8
- 3. Airline Passenger Capacity and Utilisation to and from Australia by Operator ..... 9-11
- 4. Australian International Airport Scheduled Traffic and Aircraft Movements .....12
- 5. Scheduled International Passengers and Freight by City Pairs ..... 13-19
- 6. International Airlines Own Stopover Revenue Passengers, Australian City Pairs .....20
- 7. Total Aircraft Movements at Australian International Airports by Aircraft Types .....21

# EXPLANATORY NOTES

## INTRODUCTION

1. This publication continues the series of publications on a calendar year basis presenting statistical information on the scheduled operations of international airlines operating into/out of Australia.
2. The figures in this publication were obtained from reports submitted by scheduled international carriers and are the best available at the time of publication.

## COVERAGE

3. These statistics show uplift/discharge data – These data detail, by direction, the revenue traffic between the actual points of uplift and discharge within each flight, aggregated for all flights within the period. It shows the movement of traffic between two airports not necessarily directly connected but within the same flight number. Typically, flight numbers change when an aircraft reaches its home country. This means that uplift/discharge data for the port in the operator's home country are likely to be overstated by traffic whose origin/destination point is beyond that port. For example, uplift/discharge traffic reported in this publication as Singapore could include traffic whose origin/destination is Europe.
4. These statistics cover revenue traffic carried by the operators of scheduled regular public international air transport services only and do not include charter traffic.
5. Some airlines (generally, dedicated freighter operators) operate scheduled services into Australia but operate non-scheduled services out of Australia and therefore outbound activity is not recorded in this data collection.

## PRODUCTION AND INTERPRETATION

6. Tables 1 and 2 show the country of the relevant uplift or discharge port served by that airline. For example, traffic uplifted/discharged between Sydney and Singapore by British Airways would be shown as Singapore traffic in Tables 1 and 2.
7. Table 3 shows figures for the country of service (or route) for each airline and therefore may not equate to the data in Tables 1 and 2. For example, the British Airways UK service identified in Table 3 could include passengers uplifted or discharged in Singapore or Thailand as well as the UK; these passengers would be shown individually under those countries in Tables 1 and 2. The difference in treatment of data between Tables 1 and 2 and Table 3 is necessary in order to work out a meaningful Seat Utilisation figure for Table 3.

Figures shown in Table 3 may include total traffic into and out of Australia for airlines that fly through Australia (also necessary in order to work out a meaningful Seat Utilisation figure). Therefore, figures in Table 3 may not equate to figures in Tables 1 and 2. For example, passengers carried by Qantas Airways from New Zealand via Australia to the UK will be included in Table 3 but will not be included in Tables 1 or 2 as these passengers were not uplifted/discharged in Australia.

8. Table 5 – shows uplift/discharge passenger and freight data for city pairs with same flight number international flight connections.
9. Where figures have been rounded, discrepancies may occur between sums of component items and totals, and in percentage changes which are derived from figures prior to rounding.
10. Published figures may be revised where figures missing at the time of publication are received or misreporting/miscalculation necessitates revisions.

## DEFINITIONS

11. The following definitions have been used in this publication:
- (a) Aircraft Movement: A landing or a take off.
  - (b) Freight: The aggregate of all revenue freight uplifted.
  - (c) Inbound: Inbound to Australia/Australian international airport.
  - (d) Mail: The aggregate of all mail uplifted.
  - (e) Outbound: Outbound from Australia/Australian international airport.
  - (f) Revenue Passengers: please refer to paragraph 12.
  - (g) Seat Utilisation: The ratio of passengers carried to seats available, expressed as a percentage.
  - (h) Seats Available: Generally based on standard aircraft configuration, the aggregate of seats available on all flights operated over a particular service.
  - (i) Services: Scheduled flights over authorised routes which are listed according to the main ports involved.

## COMPARABILITY OF DATA OVER TIME

12. Revenue Passengers:
- For July 2000 and onwards: All passengers paying any fare (frequent flyer redemption passengers are regarded as revenue passengers). In most cases, Revenue Passengers will now include all passengers excluding Free Of Charge passengers and positioning crew.
  - To December 1999: The aggregate of all passengers paying 25% or more of the standard air fare (as defined by ICAO).
  - January 2000 to June 2000: Transition period.

The Revenue Passenger definition change could result in approximately a three per cent increase in passenger numbers over a full period (month or year).

13. Country and City data – reporting of Uplift/Discharge data by Qantas Airways:
- Prior to January 2003: Uplift/Discharge within Qantas Airways' international network.
  - For January 2003 and onwards: Uplift/Discharge within flight number – as per the standard definition.

For example, what was previously reported as Adelaide to London (no direct services between these two cities) will now be reported as either Adelaide to Singapore or Melbourne/Sydney to London.

This change has been introduced in order to make the data comparable across all airlines operating services to/from Australia.

The effect of this change – comparing data under the two methods of reporting:

- Country of Port data (Tables 1 & 2) – There will be a shift in traffic to countries such as Singapore which are used as hubs and away from countries such as France, Germany and Italy which previously received traffic channelled through hubs. The total volume of traffic is not affected.
- Country of Service data (Table 3) – no change, as the Uplift/Discharge definition is not applicable to classifying the country of service.
- Australian International Airports (Table 4) – there may be a shift of traffic to the major airports.
- City Pairs (Table 5) – There will be a shift in traffic to cities such as Singapore which are used as hubs and away from cities such as Paris, Frankfurt and Rome which previously received traffic channelled through hubs. The total volume of traffic is not affected. Prior to the change, statistics reported for city pairs without “same flight number” international flight connections mainly reflected carriage on interconnecting international services by Qantas Airways. That traffic should have been interpreted as increasing the volume of traffic between the primary international ports rather than as an indicator of traffic volumes between ports without “same flight number” international flight connections. It should be noted however, that there was no double counting of traffic.

14. Country of Service classification by Qantas Airways:

- For July 2002 and onwards: based on the foreign country where same flight number services commence or cease – as per the standard definition. For example, Sydney-Denpasar-Singapore services would be classified as Country of Service = Singapore.
- Prior to July 2002: based on Qantas classification – this mainly affected Indonesia and Singapore Countries of Service. For example, Sydney-Denpasar-Singapore services were classified as Country of Service = Indonesia.

15. Airline data – Reporting of code share services:

Reporting of traffic split by airline code for code share arrangements was discontinued as of June 2000. For July 2000 and onwards, ALL traffic carried is reported under the operating airline regardless of code share arrangements.

Monthly airline market share figures for July 2001 onwards will be comparable with the same month in the previous year. However, these figures may not be comparable with monthly data prior to July 2000.

SYMBOLS AND OTHER USAGE

- nil or zero
- .. not applicable

INDEMNITY STATEMENT

The Bureau of Transport and Regional Economics has taken due care in preparing the information contained in this publication. However, noting that data have been provided by third parties, the Commonwealth gives no warranty as to the accuracy, reliability, fitness for purpose, or otherwise of the information.

## DATA ISSUES

<b>Air Paradise International</b>	No data received for November 2005 and missing data for Adelaide and Melbourne for September 2005. Service ceased November 2005.
<b>Austrian Airlines/Lauda Air</b>	No outbound freight data for September 2000 onwards. No inbound freight data for April 2001 onwards.
<b>Merpati Nusantara Airlines</b>	Jakarta/Christmas Island scheduled services commenced in August 2001 and ceased in February 2004 – no data has been received for these services.
<b>Norfolk Jet Express</b>	Service commenced August 2004 and ceased December 2004. No data has been received.
<b>Polar Air Cargo</b>	No data received for March 2003 and onwards. Service ceased October 2005.
<b>Polynesian Airlines</b>	Data not received for August, September and October 2005. Service ceased October 2005.
<b>Royal Tongan Airlines</b>	Operated services recommenced in December 2002 and ceased in April 2004. No data received for July 2003 and onwards.
<b>Value Air</b>	Data not received for September and October 2005. Service ceased October 2005.
<b>Vietnam Airlines</b>	No data received for inbound operations to Sydney for August 2002 to May 2004 and for July 2004 to November 2004 and January 2005 to March 2005 and May 2005. Data for Outbound operations have been received for July 2003 onwards.

## AIRLINES COMMENCING/WITHDRAWING SERVICES DURING 2005

The following airlines commenced operated services to/from Australia

- Air Tahiti Nui
- Airlines PNG (not shown in the tables as no data collected as yet)
- Jetstar
- Polynesian Blue
- Tiger Airways

The following airline ceased operated services to/from Australia

- Air Paradise International
- Lufthansa German Airlines
- Polar Air Cargo
- Polynesian Airlines
- Value Air

## HIGHLIGHTS – YEAR ENDED DECEMBER 2005

- Fifty-seven international scheduled airlines operated services to/from Australia during the year (includes eight dedicated freight airlines but excludes airlines operating only via code share arrangements).
- International scheduled passenger traffic in 2005 was 20.876 million compared to 19.371 million in 2004 – an increase of 7.8%.
- Chart I shows total passenger traffic for the years 1995 to 2005. Over this period, 2002 and 2003 were the only years that recorded a decrease in traffic compared to the previous year. Passenger traffic in 2002 was affected by the terrorist attacks on the USA in September 2001 and the collapse of Ansett International (also in September 2001). Passenger traffic in 2003 was affected by the SARS crisis (April, May and June 2003 in particular) and the war in Iraq.
- Following the two years of negative growth, each month since September 2003 has recorded the highest level of passenger traffic when compared to the same month in any previous year. As a result of this, 2004 was a record year and 2005 has recorded the highest level of passenger traffic ever carried in a calendar year. Chart II compares monthly passenger traffic for 2005 with monthly passenger traffic for 2004.
- Chart III shows the airline market shares in terms of passenger carriage for the top ten airlines for 1995, 2000 and 2005. In the latest year, Qantas Airways had the largest share of the market with 28.0% followed by Singapore Airlines with 10.6%, Air New Zealand with 8.7%, Emirates with 6.0% and Malaysia Airlines with 5.5%.
- Compared to 1995, Qantas Airways' share has decreased by 11.0 percentage points, Singapore Airlines' share has increased by 3.9 percentage points, Air New Zealand's share has decreased by 2.5 percentage points, Emirates did not operate to Australia in 1995 and Malaysia Airlines' share has increased by 1.9 percentage points. The decrease in share for the Qantas group (Qantas, Australian Airlines and Jetstar in 2005 compared to Qantas and Australia Asia Airlines in 1995) was 8.9 percentage points. The Air New Zealand group's (Air New Zealand and Freedom Air in 2005) share has remained basically unchanged over the same period.
- The share of passenger traffic accounted for by Australian designated airlines has decreased from 42.6% in 1995 (Qantas Airways, Ansett International and Australia Asia Airlines) to 37.2% in 2000 (Qantas Airways and Ansett International) and to 31.7% in 2005 (Qantas Airways, Australian Airlines Jetstar and Pacific Blue's operations to Fiji, Tonga, Vanuatu and some New Zealand services).
- International scheduled air freight traffic in 2005 increased by 4.7% over 2004 to 708 616 tonnes. Inbound freight traffic has increased by 8.1% while outbound freight traffic has increased by 0.4%.
- In 2005, dedicated freighter operations accounted for 28.0% of inbound air freight to Australia, 13.0% of outbound air freight from Australia and 21.8% of total air freight. Note that some freighters do not pick up freight in Australia – this accounts for the difference in inbound and outbound percentages. Data has not been received from Polar Air and there are also some other smaller dedicated freighter operators who are not covered.
- Page xiii is a diagrammatic representation of passenger movements by region. The region is based on international cities with non-stop air service connections with Australia. In 2005, 38.5%

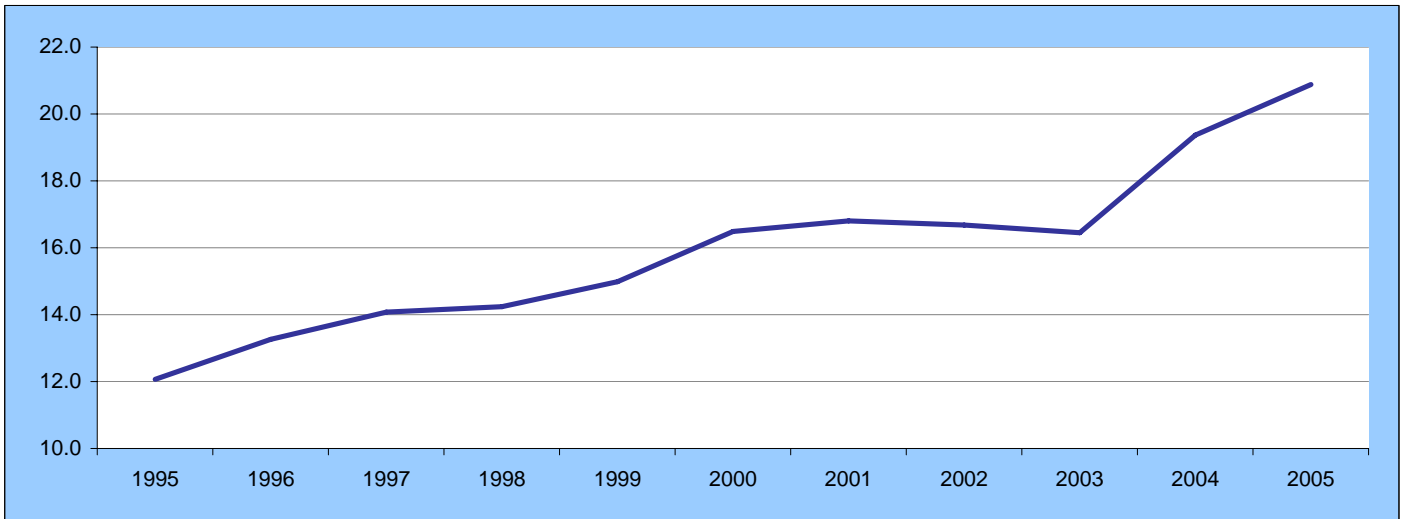


of the 20.876 million passenger movements to/from Australia were either to/from or via South-East Asia. New Zealand had 24.1% of all passenger movements followed by North-East Asia with 21.7%.

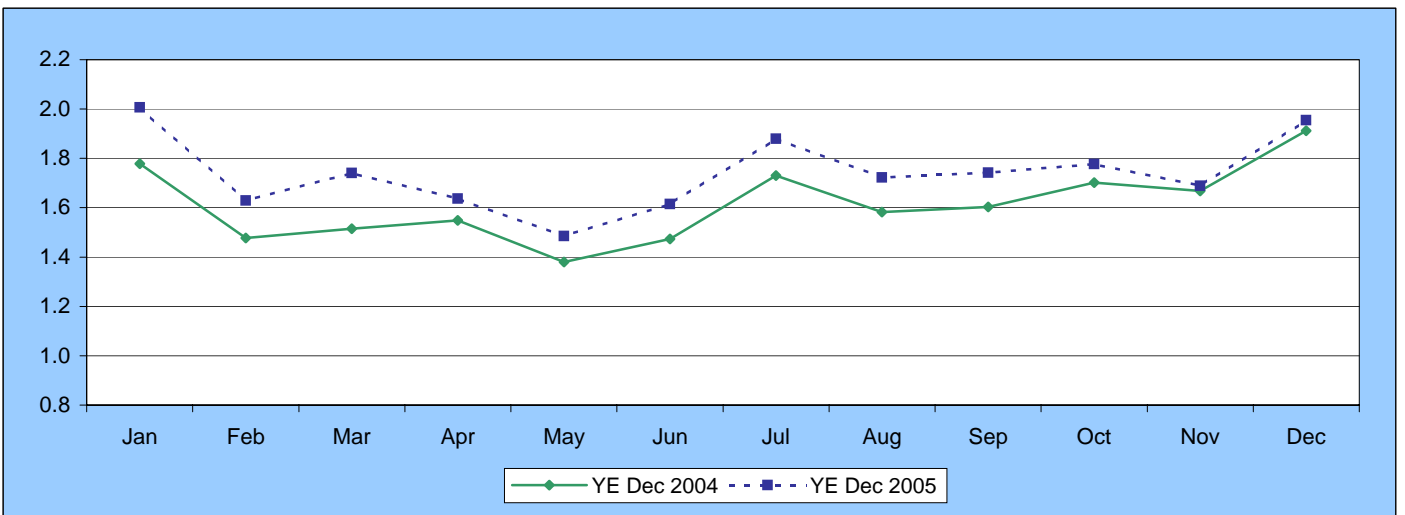
- Page xiv shows the operation of “same flight number” services beyond the non-stop point to/from Australia. Europe via South-East Asia accounted for the majority of the beyond passenger movements with nearly 950 000 followed by Middle-East via South-East Asia with nearly 450 000. Note that these beyond movements do not take account of passengers whose travel to/from Australia involves a change in flight number at the non-stop point to/from Australia.
- Table VI on page xv shows all passengers carried between Australia and international cities with non-stop air service connections. Singapore accounted for the largest number of passenger movements with 21.5% of the total. Total passenger movements between Australia and Singapore were 4.482 million compared to 3.473 million uplift/discharge passenger movements.
- Table VII on page xv shows the transit passenger traffic carried via international cities on “same flight number” services. In 2005, there were 1.977 million transit passenger movements. Singapore accounted for 51.2% of this total followed by Bangkok with 12.5%, Auckland with 7.1%, Kuala Lumpur with 6.5%, Honolulu with 5.6% and Hong Kong with 3.8%. Other transit traffic mainly covered movements from one city to another city in the same country. New York via Los Angeles for example.
- The information on Traffic On Board and Transits is intended to add another layer to the information presented in the main tables of this publication which are based on uplift/discharge traffic.

# YEAR ENDED DECEMBER 2005

**Chart I: Total International Passengers Carried (millions) - Years ended December 1995 to 2005**



**Chart II: Total International Passengers Carried (millions) - By Month**



**Table I: International Passengers by Uplift/Discharge City Pairs (a)**

Foreign Port	Australian Port	Year ended December 2003	Year ended December 2004	Year ended December 2005	% of Total	% Change 2005/04
Auckland	Sydney	1 137 536	1 257 738	1 242 633	6.0	-1.2
Singapore	Sydney	917 367	968 301	936 773	4.5	-3.3
Singapore	Perth	665 063	713 170	805 693	3.9	13.0
Singapore	Melbourne	625 305	727 435	792 898	3.8	9.0
Hong Kong	Sydney	504 054	604 986	779 387	3.7	28.8
Auckland	Brisbane	530 866	708 828	772 279	3.7	9.0
Singapore	Brisbane	552 094	627 864	654 097	3.1	4.2
Auckland	Melbourne	536 031	627 731	652 711	3.1	4.0
Los Angeles	Sydney	612 352	622 382	648 205	3.1	4.1
Christchurch	Sydney	444 022	513 781	510 892	2.4	-0.6
<b>Top 10 City Pairs</b>		<b>6 524 690</b>	<b>7 372 216</b>	<b>7 795 568</b>	<b>37.3</b>	<b>5.7</b>
<b>Other City Pairs</b>		<b>9 926 041</b>	<b>11 998 834</b>	<b>13 080 826</b>	<b>62.7</b>	<b>9.0</b>
<b>ALL CITY PAIRS</b>		<b>16 450 731</b>	<b>19 371 050</b>	<b>20 876 394</b>	<b>100.0</b>	<b>7.8</b>

**Table II: International Freight (tonnes) by Uplift/Discharge City Pairs (a)**

Foreign Port	Australian Port	Year ended December 2003	Year ended December 2004	Year ended December 2005	% of Total	% Change 2005/04
Auckland	Sydney	51 466	57 141	61 402	8.7	7.5
Singapore	Melbourne	51 210	49 098	49 075	6.9	0.0
Hong Kong	Sydney	29 970	34 147	42 655	6.0	24.9
Auckland	Melbourne	32 668	34 468	35 757	5.0	3.7
Singapore	Sydney	43 279	40 910	34 976	4.9	-14.5
Hong Kong	Melbourne	23 817	32 173	33 375	4.7	3.7
Singapore	Perth	26 129	30 133	29 467	4.2	-2.2
Los Angeles	Sydney	22 218	25 452	28 347	4.0	11.4
Singapore	Brisbane	18 633	19 732	20 767	2.9	5.2
Auckland	Brisbane	14 795	16 762	19 225	2.7	14.7
Top 10 City Pairs		314 184	340 017	355 044	50.1	4.4
Other City Pairs		297 026	336 476	353 571	49.9	5.1
ALL CITY PAIRS		611 210	676 493	708 616	100.0	4.7

**Table III: International Passengers by Uplift/Discharge Country (a)**

Country	Year ended December 2003	Year ended December 2004	Year ended December 2005	% of Total	% Change 2005/04
New Zealand	3 870 190	4 665 240	4 885 568	23.4	4.7
Singapore	2 953 619	3 291 898	3 473 169	16.6	5.5
Japan	1 544 807	1 688 136	1 680 271	8.0	-0.5
Hong Kong	1 006 528	1 358 240	1 649 203	7.9	21.4
USA	1 306 782	1 450 988	1 576 611	7.6	8.7
Malaysia	908 852	1 047 277	1 180 879	5.7	12.8
Thailand	775 709	865 196	854 176	4.1	-1.3
UK	585 587	613 971	752 587	3.6	22.6
United Arab Emirates	429 335	570 625	730 611	3.5	28.0
Indonesia	516 913	789 840	716 834	3.4	-9.2
Top 10 Countries	13 898 322	16 341 411	17 499 909	83.8	7.1
Other Countries	2 552 409	3 029 639	3 376 485	16.2	11.4
ALL COUNTRIES	16 450 731	19 371 050	20 876 394	100.0	7.8

**Table IV: International Passenger Traffic through Australian International Airports (a)**

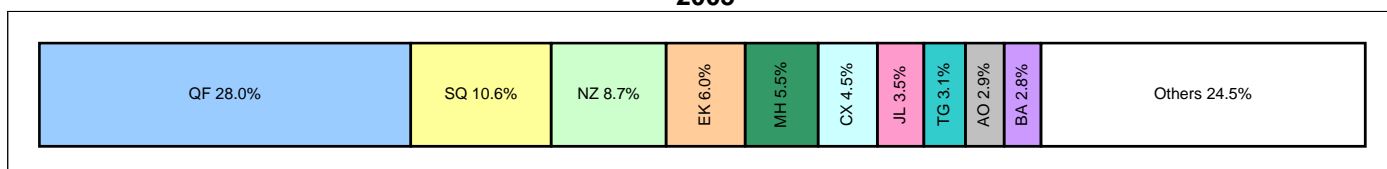
Airport	Year ended December 2003	Year ended December 2004	Year ended December 2005	% of Total	% Change 2005/04
Sydney	7 929 841	8 951 825	9 515 983	45.6	6.3
Melbourne	3 199 534	3 936 435	4 223 612	20.2	7.3
Brisbane	2 549 444	3 266 481	3 606 690	17.3	10.4
Perth	1 586 622	1 827 389	2 007 025	9.6	9.8
Cairns	746 561	846 846	861 202	4.1	1.7
Adelaide	206 849	286 083	334 298	1.6	16.9
Gold Coast/Coolangatta	138 938	136 408	203 523	1.0	49.2
Darwin	77 690	98 374	104 382	0.5	6.1
Norfolk Island	15 252	19 213	19 679	0.1	2.4
Canberra (b)	..	1 996	..	..	..
ALL AIRPORTS	16 450 731	19 371 050	20 876 394	100.0	7.8

(a) Please refer to Explanatory notes - paragraphs 3 & 13 in particular.

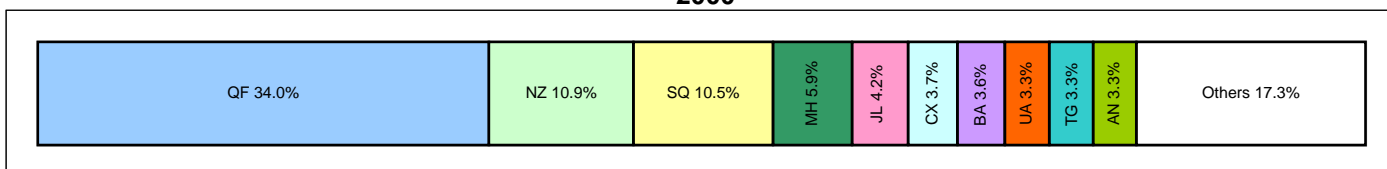
(b) International operations commenced July 2004 and ceased September 2004.

**Chart III: International Passengers by Major Airlines - Top 10 in each year - Years ended December**

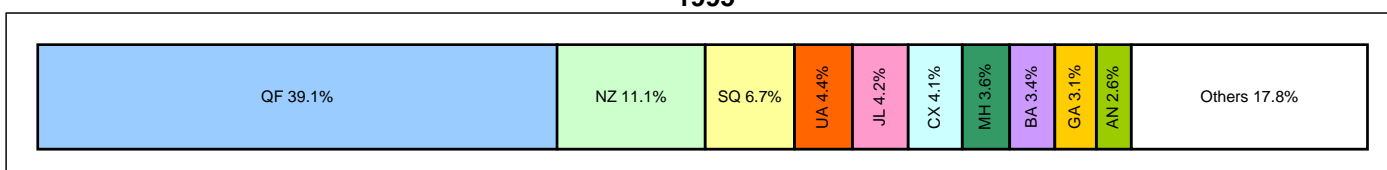
**2005**



**2000**



**1995**



AN - Ansett International  
 AO - Australian Airlines  
 BA - British Airways  
 CX - Cathay Pacific Airways  
 EK - Emirates

GA - Garuda Indonesia  
 JL - Japan Airlines  
 MH - Malaysia Airlines  
 NZ - Air New Zealand  
 QF - Qantas Airways

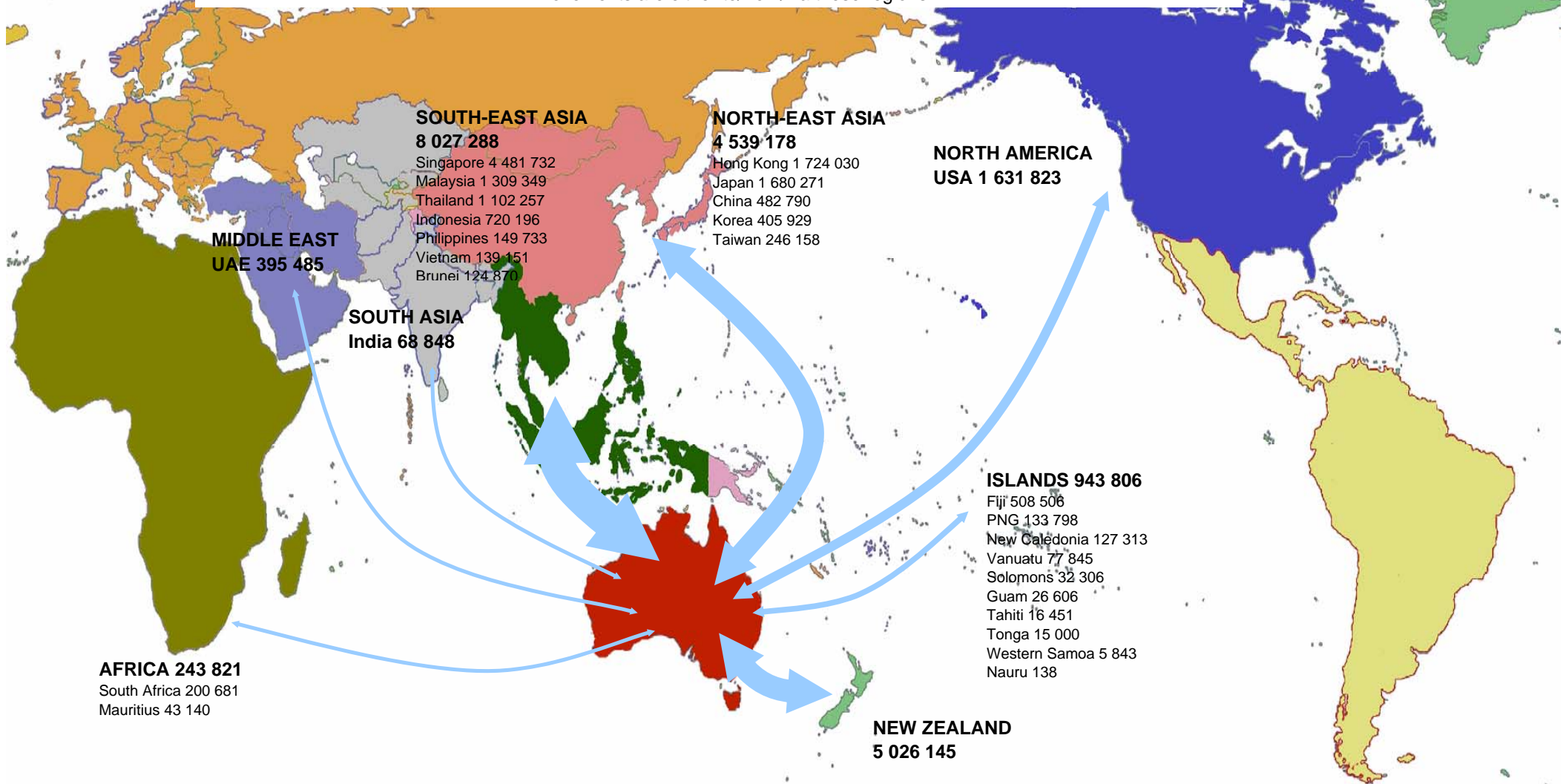
SQ - Singapore Airlines  
 TG - Thai Airways  
 UA - United Airlines

**Table V: Summary Statistics**

	Year ended December 2003	Year ended December 2004	Year ended December 2005	Growth compared to	
				2004	2003
Passengers carried	16 450 731	19 371 050	20 876 394	7.8	26.9
Freight (tonnes)	611 210	676 493	708 616	4.7	15.9
Mail (tonnes)	28 023	28 698	30 942	7.8	10.4
Available Seats	23 760 567	28 089 777	30 251 284	7.7	27.3
Flights	92 214	109 329	118 682	8.6	28.7
Aircraft Movements	108 564	127 966	134 253	4.9	23.7

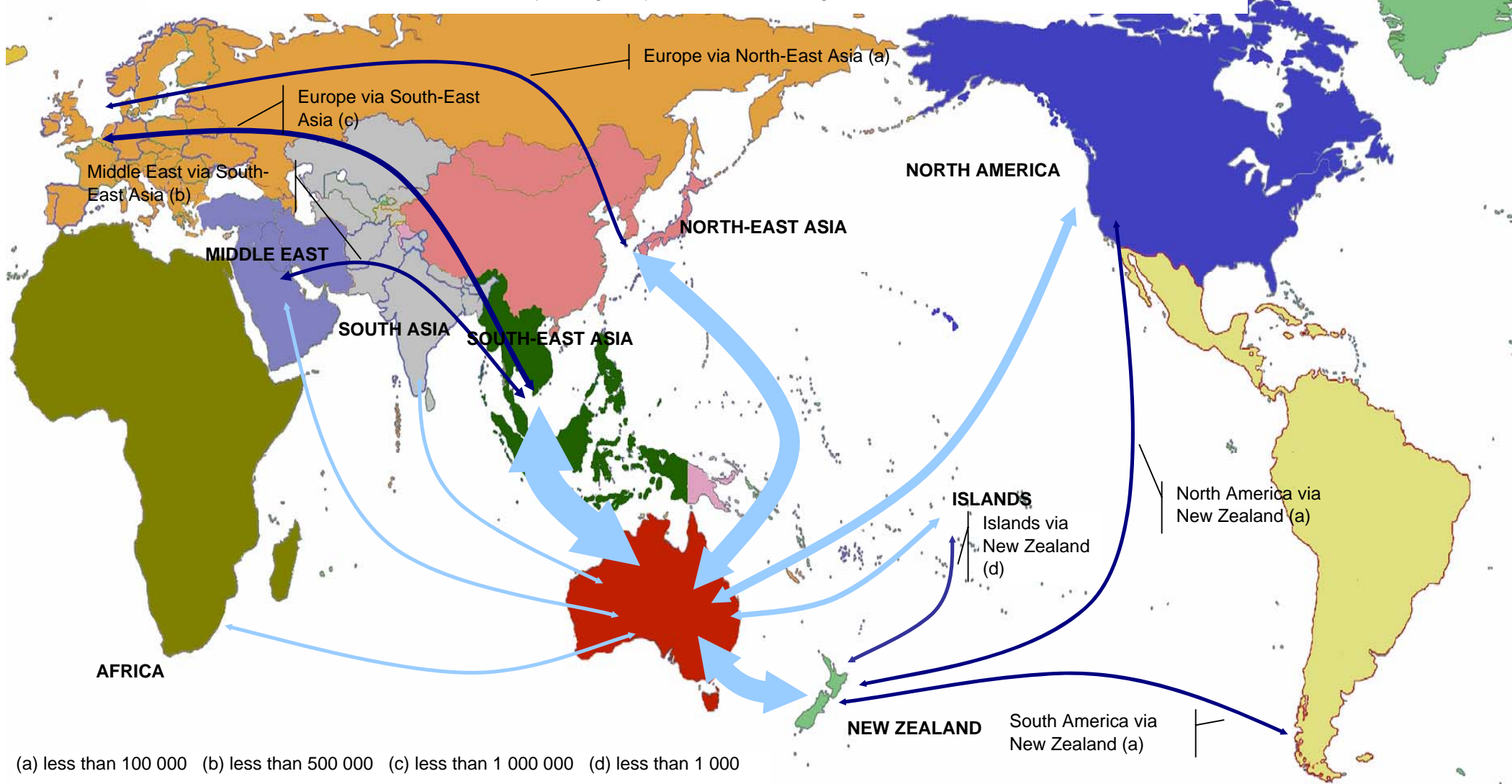
**PASSENGER MOVEMENTS BY REGION BASED ON NON-STOP SERVICES TO AND FROM AUSTRALIA  
SCHEDULED INTERNATIONAL AIR SERVICES - 2005**

Covers all passengers uplifted from or discharged in Australia  
All movements are either to/from/via these regions



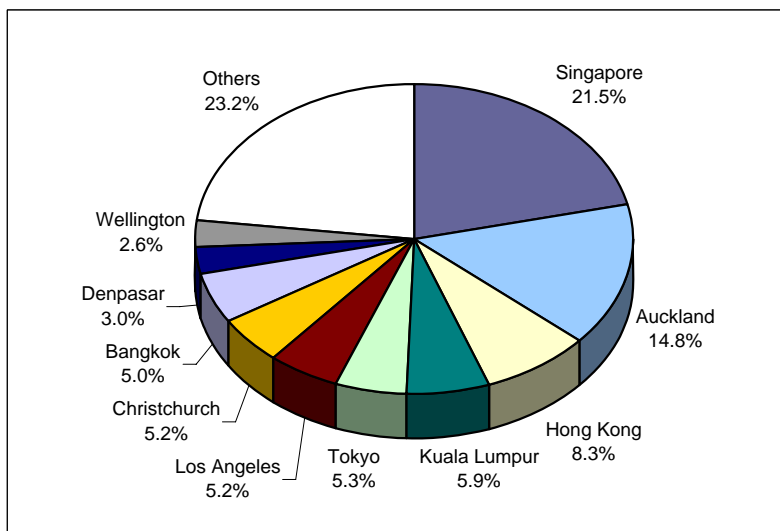
**Total Passenger Movements = 20 876 394 South-East Asia = 38.5%, New Zealand = 24.1%, North-East Asia = 21.7%, North America = 7.8%, Islands = 4.5%, Middle East = 1.9% Africa = 1.2% & South Asia = 0.3%**

**INTER-REGIONAL PASSENGER MOVEMENTS ON "SAME FLIGHT NUMBER" OPERATIONS BEYOND NON-STOP POINTS  
SCHEDULED INTERNATIONAL AIR SERVICES - 2005**  
Covers all passengers uplifted from or discharged in Australia



**TABLE VI: TRAFFIC ON BOARD PASSENGER MOVEMENTS BETWEEN AUSTRALIA AND INTERNATIONAL CITIES BASED ON NON-STOP SERVICES - 2005 (a)**

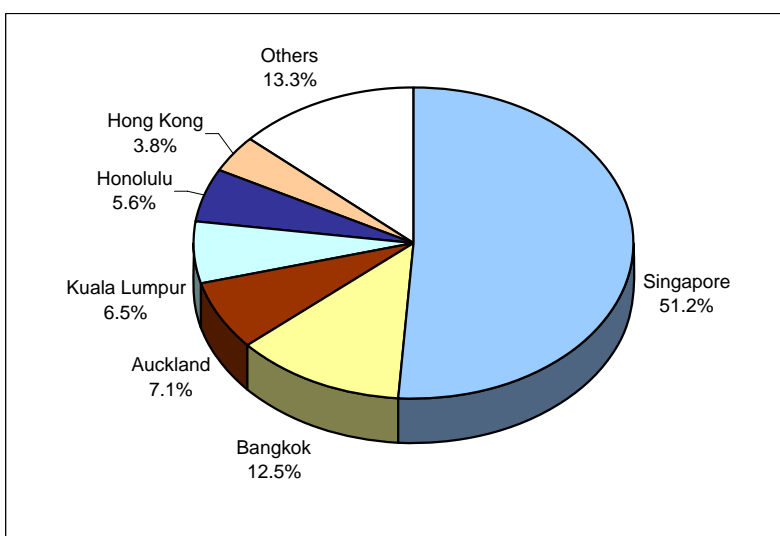
First on departure from Australia or Last before arrival in Australia	Passenger Movements
Singapore	4 481 732
Auckland	3 090 115
Hong Kong	1 724 030
Kuala Lumpur	1 240 746
Tokyo	1 110 971
Los Angeles	1 093 428
Christchurch	1 086 397
Bangkok	1 050 583
Denpasar	626 633
Wellington	532 464
Nadi	493 375
Seoul	405 929
Dubai	395 485
Osaka	358 519
Shanghai	320 397
Honolulu	316 031
Taipei	246 158
San Francisco	222 364
Johannesburg	200 681
Guangzhou	162 393
Nagoya	150 672
Manila	149 733
Ho Chi Minh City	139 151
Port Moresby	133 798
Noumea	127 313
Bandar Seri Begawan	124 870
Hamilton	101 495
Dunedin	96 835
Jakarta	90 511
Palmerston	79 394
Port Vila	77 845
Bombay	68 848
Kuching	59 333
Phuket	51 674
Fukuoka	44 573
Mauritius	43 140
Queenstown	39 445
Honiara	32 306
Guam	26 606
Papeete	16 451
Sapporo	15 536
Suva	15 131
Tongatapu	15 000
Kota Kinabalu	9 270
Apia	5 843
Kupang	3 052
Nauru	138
	20 876 394



**TABLE VII: TRANSITTING PASSENGER TRAFFIC THROUGH INTERNATIONAL CITIES on "same flight number" services 2005**

Hubs	Transitting to/from	Passenger Movements
Singapore	Europe and Middle East	1 011 925
Bangkok	Europe and Middle East	248 081
Auckland	USA and South America	139 591
Kuala Lumpur	Europe	128 470
Honolulu	Canada	110 464
Hong Kong	Europe	74 827
Others (b)		263 573
Total Transit traffic		1 976 931

(b) Mainly covers transitting traffic from one city to another city in the same country.  
For example: New York via Los Angeles.



(a) Includes transit passengers on "same flight number" services.

Does not include passengers not uplifted/discharged in Australia. For example: Dubai-Auckland passengers on services that operate via Australia to Auckland.

Note: The information on Traffic On Board and Transits is intended to add another layer to the information presented in the main tables of this publication which are based on uplift/discharge traffic.

**TABLE 1: SCHEDULED INTERNATIONAL AIR TRAFFIC TO AND FROM AUSTRALIA: Year ended December 2005**

Scheduled Operator	Country to/from	Inbound			Outbound		
		Passengers	Freight (tonnes)	Mail (tonnes)	Passengers	Freight (tonnes)	Mail (tonnes)
Aerolineas Argentinas	Argentina	17 697	222.7	5.3	17 731	274.9	-
"	New Zealand	13 182	628.7	-	12 314	565.7	-
"	ALL SERVICES	30 879	851.4	5.3	30 045	840.6	-
Air Caledonie	New Caledonia	40 212	40.1	6.8	40 638	745.6	13.0
Air Canada	Canada	52 779	85.8	25.1	57 406	97.6	-
"	USA	17 855	2 431.6	357.0	12 629	2 183.7	1.4
"	ALL SERVICES	70 634	2 517.5	382.2	70 035	2 281.3	1.4
Air China	China	71 795	541.6	25.0	66 341	772.9	9.0
Air Mauritius	Mauritius	21 857	229.2	3.2	21 283	449.0	0.1
Air Nauru	Nauru	3 940	13.6	0.4	3 778	200.5	11.3
"	Solomon Islands	2 643	4.3	-	1 961	1.2	-
"	ALL SERVICES	6 583	18.0	0.4	5 739	201.7	11.3
Air New Zealand	China	..	..	..	..	143.5	-
"	Cook Islands	431	-	-	555	-	-
"	Germany	..	81.7	-	..	106.7	-
"	New Zealand	904 012	17 578.3	1 097.8	901 950	16 043.3	103.7
"	USA	..	3 654.2	-	..	..	..
"	ALL SERVICES	904 443	21 314.2	1 097.8	902 505	16 293.5	103.7
Air Niugini	Papua New Guinea	66 054	1 395.7	24.5	67 744	3 428.7	263.2
Air Pacific	Fiji	208 237	4 756.5	19.0	208 058	4 125.7	208.2
Air Paradise International (a)	Indonesia	93 413	645.2	-	90 567	245.2	-
Air Tahiti Nui (b)	Tahiti	7 485	402.2	-	8 966	220.4	-
Air Vanuatu	Vanuatu	28 990	154.6	37.3	28 478	324.6	43.4
Asian Express Airlines	New Zealand	..	3 595.6	-	..	4 273.5	-
Asiana Airlines (c)	Korea	78 111	2 299.7	180.9	77 142	1 278.0	-
Australian Airlines	Hong Kong	29 900	665.8	-	27 336	1 584.9	-
"	Indonesia	55 328	229.7	-	57 024	56.8	0.4
"	Japan	171 471	1 144.0	80.8	166 090	2 269.1	0.0
"	Malaysia	4 856	2.3	-	4 414	84.7	-
"	Singapore	44 864	1 085.9	0.3	50 565	835.4	58.0
"	Thailand	641	21.1	-	1 425	2.6	-
"	ALL SERVICES	307 060	3 148.8	81.1	306 854	4 833.4	58.4
Austrian Airlines (d) (e)	Austria	57 268	-	5.4	48 732	-	-
"	Malaysia	7 185	-	-	6 221	-	-
"	Singapore	2 497	-	-	3 137	-	-
"	ALL SERVICES	66 950	-	5.4	58 090	-	-
British Airways	Singapore	87 256	2 039.3	1.0	78 211	4 134.4	-
"	Thailand	63 421	1 287.5	-	66 187	809.9	-
"	UK	146 230	6 615.5	190.3	136 995	1 247.9	6.7
"	ALL SERVICES	296 907	9 942.3	191.3	281 393	6 192.3	6.7
Cargolux Airlines Intl	Luxembourg	..	4 864.9	-	..	..	..
"	Malaysia	..	-	-	..	..	..
"	New Zealand	..	..	..	..	5 699.2	-
"	Singapore	..	-	-	..	..	..
"	ALL SERVICES	-	4 864.9	-	-	5 699.2	-
Cathay Pacific Airways	Hong Kong	482 978	37 199.3	605.0	453 670	25 615.6	325.7
China Airlines	Taiwan	72 185	3 010.2	84.3	71 960	857.9	-
China Eastern Airlines	China	82 429	3 387.3	155.0	74 238	552.8	11.2
China Southern Airlines	China	59 563	3 037.4	75.6	56 143	278.4	-
Continental Micronesia	Guam	12 918	6.2	0.7	13 688	74.8	0.1
Emirates	New Zealand	216 567	14 712.1	0.5	220 822	11 078.1	0.6
"	Singapore	30 781	2 053.4	224.8	22 665	3 788.8	2.6
"	Thailand	13 399	909.8	5.5	11 345	19.2	-
"	United Arab Emirates	371 002	11 351.9	338.9	359 580	13 641.1	24.4
"	ALL SERVICES	631 749	29 027.3	569.7	614 412	28 527.2	27.6
Eva Air	Taiwan	51 825	2 622.9	34.1	50 188	1 608.6	-
Federal Express Corporation	Philippines	..	..	..	..	3 906.3	-
"	USA	..	13 976.2	4.2	..	..	..
"	ALL SERVICES	-	13 976.2	4.2	-	3 906.3	-
Freedom Air International	New Zealand	226 869	-	-	224 383	-	-
Garuda Indonesia	Indonesia	155 608	3 440.6	32.7	154 073	2 741.5	0.3
"	New Zealand	8 844	752.2	-	6 773	291.0	-
"	ALL SERVICES	164 452	4 192.8	32.7	160 846	3 032.6	0.3
Gulf Air	Bahrain	53 204	1 632.2	85.9	54 081	2 172.5	118.8
"	Singapore	10 587	1 777.1	5.1	9 437	1 061.6	0.0
"	ALL SERVICES	63 791	3 409.3	91.0	63 518	3 234.1	118.9
Hawaiian Airlines	USA	35 038	257.7	49.0	36 360	685.7	0.1
Japan Airlines	Japan	366 857	7 394.1	1 379.3	362 048	8 096.5	40.7



**TABLE 1: SCHEDULED INTERNATIONAL AIR TRAFFIC TO AND FROM AUSTRALIA: Year ended December 2005**

Scheduled Operator	Country to/from	Inbound			Outbound		
		Passengers	Freight (tonnes)	Mail (tonnes)	Passengers	Freight (tonnes)	Mail (tonnes)
Jetstar (f)	New Zealand	13 187	-	-	16 280	-	-
Korean Air	Korea	124 379	9 897.3	469.5	125 809	5 627.2	27.9
Lan Chile	Chile	24 992	1 479.1	2.8	24 198	601.7	37.6
"	New Zealand	15 731	322.3	8.6	16 656	202.3	2.7
"	ALL SERVICES	40 723	1 801.4	11.5	40 854	804.0	40.3
Lauda Air (e) (g)	Austria	33 964	-	-	47 279	-	-
"	Malaysia	6 006	-	-	4 747	-	-
"	Singapore	2 926	-	-	2 618	-	-
"	ALL SERVICES	42 896	-	-	54 644	-	-
Lufthansa German Airlines (h)	Germany	..	68.4	-	..	261.0	-
"	Malaysia	..	..	..	..	0.5	-
"	New Zealand	..	555.9	-	..	..	..
"	Pakistan	..	..	..	..	-	-
"	Thailand	..	..	..	..	9.0	-
"	USA	..	1 145.9	-	..	..	..
"	ALL SERVICES	-	1 770.2	-	-	270.5	-
Malaysia Airlines	Malaysia	573 781	24 689.2	71.0	573 669	9 579.0	-
Martinair Holland	Hong Kong	..	..	..	..	451.6	-
"	Netherlands	..	7 582.1	-	..	1 351.1	-
"	Thailand	..	..	..	..	92.7	-
"	United Arab Emirates	..	..	..	..	268.3	-
"	ALL SERVICES	-	7 582.1	-	-	2 163.6	-
Merpati Nusantara Airlines	Indonesia	1 334	-	-	1 718	-	-
Pacific Blue	Fiji	45 059	25.8	-	47 152	84.5	-
"	New Zealand	167 765	91.1	-	164 998	39.3	-
"	Tonga	899	0.1	-	2 036	2.4	-
"	Vanuatu	9 979	-	-	10 398	6.4	-
"	ALL SERVICES	223 702	117.1	-	224 584	132.6	-
Philippine Airlines	Philippines	35 438	1 112.2	13.3	32 983	451.6	-
Polar Air Cargo (i)	USA	..	-	-	..	..	..
Polynesian Airlines (j)	Tonga	1 785	6.5	-	2 055	15.1	5.0
"	Western Samoa	4 609	7.4	0.5	4 715	12.2	5.1
"	ALL SERVICES	6 394	13.9	0.5	6 770	27.3	10.1
Polynesian Blue (k)	Western Samoa	1 785	1.4	-	2 959	3.4	-
Qantas Airways	Brazil	..	..	..	..	78.0	-
"	China	36 434	5 953.6	-	35 847	1 200.9	13.9
"	Fiji	..	93.4	-	..	-	-
"	Germany	39 332	5 592.4	38.3	41 730	190.3	505.1
"	Hong Kong	295 859	17 822.4	222.4	281 071	6 832.3	753.7
"	India	36 983	965.5	-	31 865	154.5	60.3
"	Indonesia	54 262	490.8	9.5	53 507	956.3	50.0
"	Japan	304 497	6 145.9	1 035.6	309 308	7 319.8	1 516.0
"	Kazakhstan	..	..	..	..	15.4	-
"	Korea	250	12.4	-	238	0.4	1.0
"	Malaysia	..	..	..	..	223.4	-
"	Netherlands	..	..	..	..	-	-
"	New Caledonia	23 502	11.2	3.2	22 961	187.7	23.2
"	New Zealand	814 620	25 481.5	674.6	840 873	25 740.4	2 117.0
"	Philippines	42 325	514.8	26.5	38 987	504.1	31.1
"	Singapore	455 038	14 466.0	876.5	420 978	17 598.1	1 880.5
"	South Africa	58 113	1 414.6	36.1	54 035	574.7	135.4
"	Thailand	56 862	1 834.9	65.9	50 263	598.4	238.8
"	UK	209 642	6 780.5	2 033.9	230 320	1 948.6	2 296.1
"	United Arab Emirates	29	-	-	..	..	..
"	USA	505 165	29 161.8	2 737.9	502 591	7 645.1	2 256.0
"	ALL SERVICES	2 932 913	116 741.9	7 760.4	2 914 574	71 768.5	11 878.1
Royal Brunei Airlines	Brunei	63 650	1 232.4	0.3	61 220	2 309.1	-
"	New Zealand	20 236	165.6	-	17 505	310.1	-
"	ALL SERVICES	83 886	1 398.0	0.3	78 725	2 619.2	-
Singapore Airlines	Indonesia	..	..	..	..	-	-
"	Malaysia	..	..	..	..	194.4	-
"	New Zealand	..	29.5	-	..	4 416.0	-
"	Singapore	1 119 978	54 573.5	1 300.3	1 092 792	43 772.9	23.2
"	ALL SERVICES	1 119 978	54 603.0	1 300.3	1 092 792	48 383.2	23.2
Solomon Airlines	Solomon Islands	9 982	76.6	0.6	10 140	39.2	-
South African Airways	South Africa	48 416	950.1	53.5	40 117	2 228.5	22.3
Thai Airways International	New Zealand	32 270	1 833.8	0.7	29 731	2 375.0	-
"	Thailand	294 974	13 454.6	1 366.4	295 659	9 509.7	9.1

**TABLE 1: SCHEDULED INTERNATIONAL AIR TRAFFIC TO AND FROM AUSTRALIA: Year ended December 2005**

Scheduled Operator	Country to/from	Inbound			Outbound		
		Passengers	Freight (tonnes)	Mail (tonnes)	Passengers	Freight (tonnes)	Mail (tonnes)
Thai Airways International	ALL SERVICES	327 244	15 288.4	1 367.1	325 390	11 884.7	9.1
Tiger Airways (f)	Singapore	535	-	-	1 200	-	-
Transair (l)	Papua New Guinea	..	69.0	-	..	230.8	-
United Airlines	Fiji	-	-	-	..	..	..
"	USA	231 552	1 428.9	1 376.9	235 421	7 130.2	108.1
"	ALL SERVICES	231 552	1 428.9	1 376.9	235 421	7 130.2	108.1
United Parcel Service	Hong Kong	..	..	..	..	85.3	-
"	Taiwan	..	..	..	..	26.9	-
"	USA	..	4 813.8	-	..	..	..
"	ALL SERVICES	-	4 813.8	-	-	112.2	-
Valuair (m)	Singapore	19 249	15.1	-	17 855	5.0	-
Vietnam Airlines (n)	Vietnam	62 266	2 019.5	14.3	76 885	384.5	-
Virgin Atlantic Airways	Hong Kong	38 093	5 055.6	-	40 296	1 131.5	-
"	UK	14 606	728.6	-	14 794	551.6	-
"	ALL SERVICES	52 699	5 784.1	-	55 090	1 683.1	-
<b>TOTAL</b>		<b>10 502 603</b>	<b>414 411.3</b>	<b>17 579.6</b>	<b>10 373 791</b>	<b>294 204.4</b>	<b>13 361.9</b>

Please refer to explanatory notes - paragraphs 3, 6 and 13 in particular.

(a) Service ceased November 2005. No data received for November 2005 and missing data for Adelaide and Melbourne for September 2005.

(b) Service commenced July 2005.

(c) Nil operations during August 2005.

(d) Shown as Lauda Air to June 2005.

(e) No outbound freight data for September 2000 onwards. No inbound freight data for April 2001 onwards.

(f) Service commenced December 2005.

(g) Shown as Austrian Airlines for July 2005 and onwards.

(h) Service ceased March 2005.

(i) Service ceased October 2005. No data received for March 2003 and onwards.

(j) Data not received for August, September & October 2005. Service ceased October 2005.

(k) Service commenced November 2005.

(l) Commenced reporting from January 2005.

(m) Data not received for September & October 2005. Service commenced December 2004 and ceased October 2005.

(n) No data received for inbound operations to Sydney for August 2002 to May 2004 and for July 2004 to November 2004 and January 2005 to March 2005 and May 2005. Data for outbound operations have been received for July 2003 onwards.

Airlines PNG commenced scheduled operations in November 2005. Data has not been collected as yet.

**TABLE 2: SCHEDULED OPERATOR MARKET SHARES AND GROWTH: Year ended December**

Scheduled Operators	Country to/from	Total Passengers				Total Freight (tonnes)				Total Mail (tonnes)			
		2004	2005	(%) of TOTAL	(%) Change	2004	2005	(%) of TOTAL	(%) Change	2004	2005	(%) of TOTAL	(%) Change
Aerolineas Argentinas	Argentina	32 216	35 428	0.2	10.0	278.9	497.6	0.1	78.4	4.7	5.3	0.0	12.6
"	New Zealand	7 149	25 496	0.1	256.6	1 129.6	1 194.4	0.2	5.7	-	-	-	..
"	ALL SERVICES	39 365	60 924	0.3	54.8	1 408.5	1 692.0	0.2	20.1	4.7	5.3	0.0	12.6
Air Caledonie	New Caledonia	79 485	80 850	0.4	1.7	656.0	785.7	0.1	19.8	20.5	19.8	0.1	-3.2
Air Canada	Canada	104 703	110 185	0.5	5.2	339.8	183.5	0.0	-46.0	29.3	25.1	0.1	-14.2
"	USA	34 456	30 484	0.1	-11.5	5 678.6	4 615.3	0.7	-18.7	247.9	358.4	1.2	44.6
"	ALL SERVICES	139 159	140 669	0.7	1.1	6 018.3	4 798.8	0.7	-20.3	277.2	383.6	1.2	38.4
Air China	China	143 969	138 136	0.7	-4.1	1 494.9	1 314.5	0.2	-12.1	40.8	33.9	0.1	-16.8
Air Mauritius	Mauritius	37 704	43 140	0.2	14.4	1 054.4	678.2	0.1	-35.7	2.7	3.3	0.0	21.5
Air Nauru	Nauru	9 399	7 718	0.0	-17.9	215.9	214.1	0.0	-0.8	4.7	11.6	0.0	148.2
"	Solomon Islands	4 681	4 604	0.0	-1.6	0.8	5.5	0.0	575.4	-	-	-	..
"	ALL SERVICES	14 080	12 322	0.1	-12.5	216.7	219.7	0.0	1.4	4.7	11.6	0.0	148.2
Air New Zealand	China	..	..	..	..	..	143.5	0.0	..	..	-	-	..
"	Cook Islands	..	986	0.0	..	..	-	-	..	..	-	-	..
"	Germany	..	..	..	..	..	188.4	0.0	..	..	-	-	..
"	New Zealand	1 614 563	1 805 962	8.7	11.9	26 452.4	33 621.6	4.7	27.1	2 030.1	1 201.5	3.9	-40.8
"	USA	..	..	..	..	..	3 654.2	0.5	..	..	-	-	..
"	ALL SERVICES	1 614 563	1 806 948	8.7	11.9	26 452.4	37 607.7	5.3	42.2	2 030.1	1 201.5	3.9	-40.8
Air Niugini	Papua New Guinea	133 023	133 798	0.6	0.6	5 153.4	4 824.4	0.7	-6.4	282.4	287.6	0.9	1.9
Air Pacific	Fiji	418 645	416 295	2.0	-0.6	8 373.5	8 882.1	1.3	6.1	203.5	227.1	0.7	11.6
Air Paradise International (a)	Indonesia	203 572	183 980	0.9	-9.6	992.3	890.4	0.1	-10.3	0.0	-	-	-100.0
Air Tahiti Nui (b)	Tahiti	..	16 451	0.1	..	..	622.6	0.1	..	..	-	-	..
Air Vanuatu	Vanuatu	62 348	57 468	0.3	-7.8	417.9	479.2	0.1	14.7	82.4	80.7	0.3	-2.1
Asian Express Airlines	New Zealand	..	..	..	..	6 966.1	7 869.2	1.1	13.0	-	-	-	..
Asiana Airlines (c)	Korea	146 274	155 253	0.7	6.1	4 418.8	3 577.7	0.5	-19.0	150.5	180.9	0.6	20.2
Australian Airlines	Hong Kong	52 384	57 236	0.3	9.3	2 503.7	2 250.6	0.3	-10.1	-	-	-	..
"	Indonesia	102 983	112 352	0.5	9.1	396.4	286.5	0.0	-27.7	0.5	0.4	0.0	-17.8
"	Japan	346 402	337 561	1.6	-2.6	4 626.6	3 413.1	0.5	-26.2	47.6	80.8	0.3	69.7
"	Malaysia	32 641	9 270	0.0	-71.6	376.3	87.0	0.0	-76.9	-	-	-	..
"	Singapore	89 567	95 429	0.5	6.5	2 189.9	1 921.3	0.3	-12.3	32.1	58.3	0.2	81.8
"	Thailand	..	2 066	0.0	..	..	23.7	0.0	..	..	-	-	..
"	ALL SERVICES	623 977	613 914	2.9	-1.6	10 092.8	7 982.2	1.1	-20.9	80.2	139.5	0.5	74.0
Austrian Airlines (d) (e)	Austria	..	106 000	0.5	..	..	-	-	..	..	5.4	0.0	..
"	Malaysia	..	13 406	0.1	..	..	-	-	..	..	-	-	..
"	Singapore	..	5 634	0.0	..	..	-	-	..	..	-	-	..
"	ALL SERVICES	-	125 040	0.6	..	-	-	-	..	-	5.4	0.0	..
British Airways	Singapore	157 505	165 467	0.8	5.1	5 801.8	6 173.8	0.9	6.4	0.2	1.0	0.0	458.8
"	Thailand	141 937	129 608	0.6	-8.7	2 388.9	2 097.4	0.3	-12.2	-	-	-	..
"	UK	277 283	283 225	1.4	2.1	8 165.3	7 863.4	1.1	-3.7	35.8	197.0	0.6	450.2
"	ALL SERVICES	576 725	578 300	2.8	0.3	16 356.1	16 134.6	2.3	-1.4	36.0	197.9	0.6	450.2
Cargolux Airlines Intl	Luxembourg	..	..	..	..	4 585.0	4 864.9	0.7	6.1	-	-	-	..
"	Malaysia	..	..	..	..	58.1	-	-	-100.0	-	-	-	..
"	New Zealand	..	..	..	..	5 171.1	5 699.2	0.8	10.2	-	-	-	..
"	Singapore	..	..	..	..	..	-	-	..	..	-	-	..
"	ALL SERVICES	-	-	-	..	9 814.2	10 564.1	1.5	7.6	-	-	-	..

**TABLE 2: SCHEDULED OPERATOR MARKET SHARES AND GROWTH: Year ended December**

Scheduled Operators	Country to/from	Total Passengers				Total Freight (tonnes)				Total Mail (tonnes)			
		2004	2005	(%) of TOTAL	(%) Change	2004	2005	(%) of TOTAL	(%) Change	2004	2005	(%) of TOTAL	(%) Change
Cathay Pacific Airways	Hong Kong	764 932	936 648	4.5	22.4	57 461.2	62 814.9	8.9	9.3	781.1	930.7	3.0	19.2
China Airlines	Taiwan	122 167	144 145	0.7	18.0	2 917.4	3 868.1	0.5	32.6	141.1	84.3	0.3	-40.3
China Eastern Airlines	China	126 322	156 667	0.8	24.0	4 426.6	3 940.1	0.6	-11.0	11.7	166.3	0.5	1316.6
China Southern Airlines	China	76 673	115 706	0.6	50.9	2 244.2	3 315.8	0.5	47.7	39.6	75.6	0.2	91.0
Continental Micronesia	Guam	27 372	26 606	0.1	-2.8	38.8	81.0	0.0	109.0	1.0	0.9	0.0	-15.7
Emirates	New Zealand	280 249	437 389	2.1	56.1	24 308.0	25 790.2	3.6	6.1	1.9	1.1	0.0	-42.9
"	Singapore	51 174	53 446	0.3	4.4	5 523.7	5 842.2	0.8	5.8	66.3	227.4	0.7	243.1
"	Thailand	..	24 744	0.1	..	..	929.0	0.1	..	..	5.5	0.0	..
"	United Arab Emirates	570 625	730 582	3.5	28.0	18 812.1	24 993.0	3.5	32.9	227.4	363.4	1.2	59.8
"	ALL SERVICES	902 048	1 246 161	6.0	38.1	48 643.7	57 554.4	8.1	18.3	295.5	597.3	1.9	102.1
Eva Air	Taiwan	81 961	102 013	0.5	24.5	3 328.4	4 231.5	0.6	27.1	47.3	34.1	0.1	-27.9
Federal Express Corporation	Philippines	..	..	..	..	5 409.6	3 906.3	0.6	-27.8	-	-	-	..
"	USA	..	..	..	..	13 582.2	13 976.2	2.0	2.9	22.7	4.2	0.0	-81.5
"	ALL SERVICES	-	-	-	..	18 991.8	17 882.5	2.5	-5.8	22.7	4.2	0.0	-81.5
Freedom Air International	New Zealand	508 340	451 252	2.2	-11.2	-	-	-	..	-	-	-	..
Garuda Indonesia	Indonesia	333 712	309 681	1.5	-7.2	6 933.1	6 182.2	0.9	-10.8	18.1	32.9	0.1	82.2
"	New Zealand	10 892	15 617	0.1	43.4	1 214.9	1 043.2	0.1	-14.1	-	-	-	..
"	ALL SERVICES	344 604	325 298	1.6	-5.6	8 148.1	7 225.4	1.0	-11.3	18.1	32.9	0.1	82.2
Gulf Air	Bahrain	101 298	107 285	0.5	5.9	2 821.9	3 804.7	0.5	34.8	149.2	204.7	0.7	37.2
"	Singapore	22 983	20 024	0.1	-12.9	2 936.5	2 838.7	0.4	-3.3	28.3	5.1	0.0	-81.8
"	ALL SERVICES	124 281	127 309	0.6	2.4	5 758.5	6 643.4	0.9	15.4	177.4	209.8	0.7	18.3
Hawaiian Airlines (f)	USA	45 955	71 398	0.3	55.4	354.3	943.5	0.1	166.3	4.0	49.1	0.2	1117.9
Japan Airlines	Japan	733 755	728 905	3.5	-0.7	18 545.7	15 490.6	2.2	-16.5	1 175.4	1 420.1	4.6	20.8
Jetstar (g)	New Zealand	..	29 467	0.1	..	..	-	-	..	..	-	-	..
Korean Air	Korea	270 540	250 188	1.2	-7.5	21 938.2	15 524.5	2.2	-29.2	563.4	497.4	1.6	-11.7
Lan Chile	Chile	40 086	49 190	0.2	22.7	1 346.0	2 080.8	0.3	54.6	36.8	40.4	0.1	10.0
"	New Zealand	24 306	32 387	0.2	33.2	448.8	524.6	0.1	16.9	5.5	11.3	0.0	106.6
"	ALL SERVICES	64 392	81 577	0.4	26.7	1 794.8	2 605.4	0.4	45.2	42.2	51.7	0.2	22.5
Lauda Air (e) (h)	Austria	182 965	81 243	0.4	-55.6	-	-	-	..	-	-	-	..
"	Malaysia	23 029	10 753	0.1	-53.3	-	-	-	..	-	-	-	..
"	Singapore	6 622	5 544	0.0	-16.3	-	-	-	..	-	-	-	..
"	ALL SERVICES	212 616	97 540	0.5	-54.1	-	-	-	..	-	-	-	..
Lufthansa German Airlines (i)	Germany	..	..	..	..	3 242.1	329.4	0.0	-89.8	0.0	-	-	-100.0
"	India	..	..	..	..	1.1	..	..	-100.0	-	..	..	..
"	Malaysia	..	..	..	..	113.0	0.5	0.0	-99.5	-	-	-	..
"	New Zealand	..	..	..	..	2 754.0	555.9	0.1	-79.8	1.5	-	-	-100.0
"	Pakistan	..	..	..	..	-	-	-	..	-	-	-	..
"	Thailand	..	..	..	..	52.7	9.0	0.0	-83.0	-	-	-	..
"	United Arab Emirates	..	..	..	..	2.5	..	..	-100.0	-	..	..	..
"	USA	..	..	..	..	6 414.3	1 145.9	0.2	-82.1	-	-	-	..
"	ALL SERVICES	-	-	-	..	12 579.8	2 040.7	0.3	-83.8	1.5	-	-	-100.0
Malaysia Airlines	Malaysia	991 607	1 147 450	5.5	15.7	41 557.3	34 268.2	4.8	-17.5	56.7	71.0	0.2	25.1
"	New Zealand	4 151	..	..	-100.0	54.4	..	..	-100.0	-	..	..	..
"	ALL SERVICES	995 758	1 147 450	5.5	15.2	41 611.7	34 268.2	4.8	-17.6	56.7	71.0	0.2	25.1
Martinair Holland	Bahrain	..	..	..	..	15.0	..	..	-100.0	-	..	..	..

**TABLE 2: SCHEDULED OPERATOR MARKET SHARES AND GROWTH: Year ended December**

Scheduled Operators	Country to/from	Total Passengers				Total Freight (tonnes)				Total Mail (tonnes)			
		2004	2005	(%) of TOTAL	(%) Change	2004	2005	(%) of TOTAL	(%) Change	2004	2005	(%) of TOTAL	(%) Change
Martinair Holland	Hong Kong	..	..	..	..	572.6	451.6	0.1	-21.1	-	-	-	..
"	Japan	..	..	..	..	143.0	..	..	-100.0	-	..	..	..
"	Macau	..	..	..	..	83.0	..	..	-100.0	-	..	..	..
"	Netherlands	..	..	..	..	9 382.2	8 933.1	1.3	-4.8	-	-	-	..
"	New Zealand	..	..	..	..	32.1	..	..	-100.0	-	..	..	..
"	Thailand	..	..	..	..	209.6	92.7	0.0	-55.8	-	-	-	..
"	United Arab Emirates	..	..	..	..	51.6	268.3	0.0	420.4	-	-	-	..
"	ALL SERVICES	-	-	-	..	10 489.0	9 745.6	1.4	-7.1	-	-	-	..
Merpati Nusantara Airlines (j)	Indonesia	1 514	3 052	0.0	101.6	-	-	-	..	-	-	-	..
Norfolk Jet Express (k)	New Zealand	..	..	..	..	-	..	..	..	-	..	..	..
Pacific Blue	Fiji	23 957	92 211	0.4	284.9	-	110.3	0.0	..	-	-	-	..
"	New Zealand	280 631	332 763	1.6	18.6	-	130.5	0.0	..	-	-	-	..
"	Tonga	..	2 935	0.0	..	..	2.5	0.0	..	..	-	-	..
"	Vanuatu	6 290	20 377	0.1	224.0	-	6.4	0.0	..	-	-	-	..
"	ALL SERVICES	310 878	448 286	2.1	44.2	-	249.7	0.0	..	-	-	-	..
Philippine Airlines	Philippines	69 743	68 421	0.3	-1.9	1 948.5	1 563.8	0.2	-19.7	-	13.3	0.0	..
Polar Air Cargo (l)	USA	..	..	..	..	-	-	-	..	-	-	-	..
Polynesian Airlines (m)	New Zealand	1 670	..	..	-100.0	8.2	..	..	-100.0	8.0	..	..	-100.0
"	Niue	17	..	..	-100.0	-	..	..	..	-	..	..	..
"	Tonga	5 126	3 840	0.0	-25.1	38.1	21.6	0.0	-43.2	7.0	5.0	0.0	-28.6
"	Western Samoa	12 635	9 324	0.0	-26.2	84.0	19.5	0.0	-76.7	6.3	5.7	0.0	-10.2
"	ALL SERVICES	19 448	13 164	0.1	-32.3	130.3	41.2	0.0	-68.4	21.3	10.7	0.0	-50.0
Polynesian Blue (n)	Western Samoa	..	4 744	0.0	..	..	4.8	0.0	..	..	-	-	..
Qantas Airways	Brazil	..	..	..	..	..	78.0	0.0	..	..	-	-	..
"	China	5 986	72 281	0.3	1107.5	1 508.2	7 154.5	1.0	374.4	0.8	13.9	0.0	1577.1
"	Fiji	..	..	..	..	0.0	93.4	0.0	>999.9	-	-	-	..
"	France	15 453	..	..	-100.0	245.3	..	..	-100.0	8.0	..	..	-100.0
"	Germany	78 477	81 062	0.4	3.3	2 358.3	5 782.7	0.8	145.2	551.0	543.4	1.8	-1.4
"	Greece	314	..	..	-100.0	-	..	..	..	-	..	..	..
"	Hong Kong	537 918	576 930	2.8	7.3	23 047.9	24 654.8	3.5	7.0	1 026.6	976.1	3.2	-4.9
"	India	27 543	68 848	0.3	150.0	294.4	1 120.0	0.2	280.4	14.4	60.3	0.2	319.4
"	Indonesia	148 059	107 769	0.5	-27.2	2 308.0	1 447.0	0.2	-37.3	63.0	59.5	0.2	-5.5
"	Japan	607 979	613 805	2.9	1.0	15 055.1	13 465.7	1.9	-10.6	2 415.0	2 551.6	8.2	5.7
"	Kazakhstan	..	..	..	..	..	15.4	0.0	..	..	-	-	..
"	Korea	..	488	0.0	..	..	12.7	0.0	..	..	1.0	0.0	..
"	Malaysia	..	..	..	..	..	223.4	0.0	..	..	-	-	..
"	Netherlands	..	..	..	..	..	-	-	..	..	-	-	..
"	New Caledonia	43 854	46 463	0.2	5.9	220.0	198.9	0.0	-9.6	28.6	26.4	0.1	-7.8
"	New Zealand	1 784 583	1 655 493	7.9	-7.2	46 767.3	51 221.9	7.2	9.5	2 171.1	2 791.6	9.0	28.6
"	Philippines	89 522	81 312	0.4	-9.2	1 571.8	1 018.9	0.1	-35.2	65.5	57.5	0.2	-12.1
"	Singapore	928 549	876 016	4.2	-5.7	34 815.4	32 064.2	4.5	-7.9	3 201.2	2 756.9	8.9	-13.9
"	South Africa	116 604	112 148	0.5	-3.8	2 033.4	1 989.3	0.3	-2.2	159.9	171.5	0.6	7.2
"	Thailand	105 402	107 125	0.5	1.6	1 447.9	2 433.3	0.3	68.1	337.7	304.8	1.0	-9.8
"	UK	334 338	439 962	2.1	31.6	7 500.1	8 729.1	1.2	16.4	3 731.6	4 330.0	14.0	16.0
"	United Arab Emirates	..	29	0.0	..	..	-	-	..	..	-	-	..

**TABLE 2: SCHEDULED OPERATOR MARKET SHARES AND GROWTH: Year ended December**

Scheduled Operators	Country to/from	Total Passengers				Total Freight (tonnes)				Total Mail (tonnes)			
		2004	2005	(%) of TOTAL	(%) Change	2004	2005	(%) of TOTAL	(%) Change	2004	2005	(%) of TOTAL	(%) Change
Qantas Airways	USA	940 524	1 007 756	4.8	7.1	22 762.6	36 806.9	5.2	61.7	3 962.1	4 993.9	16.1	26.0
"	ALL SERVICES	5 765 105	5 847 487	28.0	1.4	161 935.7	188 510.4	26.6	16.4	17 736.5	19 638.5	63.5	10.7
Royal Brunei Airlines	Brunei	102 097	124 870	0.6	22.3	2 708.5	3 541.5	0.5	30.8	0.2	0.3	0.0	60.2
"	New Zealand	39 830	37 741	0.2	-5.2	1 084.6	475.7	0.1	-56.1	-	-	-	..
"	ALL SERVICES	141 927	162 611	0.8	14.6	3 793.1	4 017.3	0.6	5.9	0.2	0.3	0.0	60.2
Royal Tongan Airlines (o)	New Zealand	..	..	..	..	-	..	..	..	-	..	..	..
"	Tonga	..	..	..	..	-	..	..	..	-	..	..	..
"	ALL SERVICES	-	-	-	..	-	-	-	..	-	-	-	..
Singapore Airlines	Indonesia	..	..	..	..	84.3	-	-	-100.0	-	-	-	..
"	Malaysia	..	..	..	..	..	194.4	0.0	..	..	-	-	..
"	New Zealand	..	..	..	..	3 716.3	4 445.5	0.6	19.6	-	-	-	..
"	Singapore	2 028 837	2 212 770	10.6	9.1	99 119.9	98 346.3	13.9	-0.8	1 575.4	1 323.4	4.3	-16.0
"	ALL SERVICES	2 028 837	2 212 770	10.6	9.1	102 920.6	102 986.2	14.5	0.1	1 575.4	1 323.4	4.3	-16.0
Solomon Airlines	Solomon Islands	20 856	20 122	0.1	-3.5	203.5	115.8	0.0	-43.1	-	0.6	0.0	..
South African Airways	South Africa	95 346	88 533	0.4	-7.1	3 633.1	3 178.6	0.4	-12.5	51.6	75.8	0.2	47.1
Thai Airways International	New Zealand	108 876	62 001	0.3	-43.1	6 840.0	4 208.8	0.6	-38.5	0.2	0.7	0.0	258.6
"	Thailand	617 857	590 633	2.8	-4.4	22 273.0	22 964.3	3.2	3.1	1 214.9	1 375.5	4.4	13.2
"	ALL SERVICES	726 733	652 634	3.1	-10.2	29 113.0	27 173.1	3.8	-6.7	1 215.1	1 376.2	4.4	13.3
Tiger Airways (g)	Singapore	..	1 735	0.0	..	..	-	-	..	..	-	-	..
Transair (p)	Papua New Guinea	..	..	..	..	..	299.8	0.0	..	..	-	-	..
United Airlines	Fiji	..	-	-	..	..	-	-	..	..	-	-	..
"	USA	430 053	466 973	2.2	8.6	6 735.7	8 559.1	1.2	27.1	1 503.9	1 485.0	4.8	-1.3
"	ALL SERVICES	430 053	466 973	2.2	8.6	6 735.7	8 559.1	1.2	27.1	1 503.9	1 485.0	4.8	-1.3
United Parcel Service	Hong Kong	..	..	..	..	200.1	85.3	0.0	-57.4	-	-	-	..
"	Philippines	..	..	..	..	2.6	..	..	-100.0	-	..	..	..
"	Taiwan	..	..	..	..	157.4	26.9	0.0	-82.9	-	-	-	..
"	USA	..	..	..	..	4 613.1	4 813.8	0.7	4.4	-	-	-	..
"	ALL SERVICES	-	-	-	..	4 973.3	4 926.1	0.7	-0.9	-	-	-	..
Valuair (q)	Singapore	6 661	37 104	0.2	457.0	0.2	20.1	0.0	8652.2	-	-	-	..
Vietnam Airlines (r)	Vietnam	113 988	139 151	0.7	22.1	1 568.5	2 404.0	0.3	53.3	-	14.3	0.0	..
Virgin Atlantic Airways (s)	Hong Kong	3 006	78 389	0.4	2507.8	379.3	6 187.0	0.9	1531.2	-	-	-	..
"	UK	2 350	29 400	0.1	1151.1	-	1 280.2	0.2	..	-	-	-	..
"	ALL SERVICES	5 356	107 789	0.5	1912.5	379.3	7 467.2	1.1	1868.7	-	-	-	..
<b>TOTAL</b>		<b>19 371 050</b>	<b>20 876 394</b>	<b>100.0</b>	<b>7.8</b>	<b>676 493.2</b>	<b>708 615.7</b>	<b>100.0</b>	<b>4.7</b>	<b>28 698.4</b>	<b>30 941.5</b>	<b>100.0</b>	<b>7.8</b>

**TABLE 2: SCHEDULED OPERATOR MARKET SHARES AND GROWTH: Year ended December**

Scheduled Operators	Country to/from	Total Passengers			Total Freight (tonnes)			Total Mail (tonnes)		
		2004	2005	(%) of TOTAL Change	2004	2005	(%) of TOTAL Change	2004	2005	(%) of TOTAL Change

Please refer to explanatory notes - paragraphs 3, 6 and 13 in particular.

(a) Service ceased November 2005. No data received for November 2005 and missing data for Adelaide and Melbourne for September 2005.

(b) Service commenced July 2005.

(c) Nil operations during August 2005.

(d) Shown as Lauda Air to June 2005.

(e) No outbound freight data for September 2000 onwards. No inbound freight data for April 2001 onwards.

(f) Service recommenced May 2004.

(g) Service commenced December 2005.

(h) Shown as Austrian Airlines for July 2005 and onwards.

(i) Service ceased March 2005.

(j) Kupang/Darwin services recommenced in June 2004.

(k) Service commenced August 2004 and ceased December 2004. No data was received.

(l) Service ceased October 2005. No data received for March 2003 and onwards.

(m) Data not received for August, September & October 2005. Service ceased October 2005.

(n) Service commenced November 2005.

(o) Operated services recommenced in December 2002 and ceased in April 2004. No data received for July 2003 and onwards.

(p) Commenced reporting from January 2005.

(q) Data not received for September & October 2005. Service commenced December 2004 and ceased October 2005.

(r) No data received for inbound operations to Sydney for August 2002 to May 2004 and for July 2004 to November 2004 and January 2005 to March 2005 and May 2005.

Data for outbound operations have been received for July 2003 onwards.

(s) Service commenced December 2004.

Airlines PNG commenced scheduled operations in November 2005. Data has not been collected as yet.

**TABLE 3: AIRLINE PASSENGER CAPACITY AND UTILISATION TO AND FROM AUSTRALIA BY OPERATOR: Year ended December 2005**

Scheduled Operator	Service to/from	Inbound				Outbound			
		No. of Flights	Pax Carried	Seats Available	Seat Utilisation %	No. of Flights	Pax Carried	Seats Available	Seat Utilisation %
Aerolineas Argentinas	Argentina	170	30 879	41 990	73.5	170	30 045	41 990	71.6
Air Caledonie	New Caledonia	317	40 212	56 948	70.6	317	40 638	56 948	71.4
Air Canada	Canada	434	70 634	95 774	73.8	433	70 035	95 314	73.5
Air China	China	368	71 795	100 398	71.5	368	66 341	100 398	66.1
Air Mauritius	Mauritius	118	21 857	27 671	79.0	120	21 283	28 021	76.0
Air Nauru	Nauru	101	6 583	13 554	48.6	102	5 739	11 167	51.4
Air New Zealand	Cook Islands	39	3 195	5 696	56.1	38	3 362	5 542	60.7
"	Germany	77	..	-	..	77	..	-	..
"	New Zealand	6 898	901 248	1 269 629	71.0	6 891	899 143	1 269 446	70.8
"	ALL SERVICES	7 014	904 443	1 275 325	70.9	7 006	902 505	1 274 988	70.8
Air Niugini	Papua New Guinea	802	66 054	117 923	56.0	801	67 744	117 800	57.5
Air Pacific	Fiji	1 090	208 237	306 318	68.0	1 090	208 058	306 318	67.9
Air Paradise International (a)	Indonesia	605	93 413	137 652	67.9	606	90 567	137 838	65.7
Air Tahiti Nui (b)	Tahiti	51	7 485	14 994	49.9	51	8 966	14 994	59.8
Air Vanuatu	Vanuatu	425	28 990	53 886	53.8	426	28 478	53 956	52.8
Asian Express Airlines (c)	New Zealand	244	..	-	..	244	..	-	..
Asiana Airlines (d)	Korea	308	78 111	95 480	81.8	308	77 142	95 480	80.8
Australian Airlines	Hong Kong	157	29 993	42 208	71.1	157	27 418	42 254	64.9
"	Indonesia	185	31 849	49 855	63.9	184	27 975	49 598	56.4
"	Japan	946	171 826	252 629	68.0	944	166 324	252 095	66.0
"	Malaysia	34	4 859	9 097	53.4	34	4 513	9 137	49.4
"	Singapore	393	71 706	105 010	68.3	393	83 293	105 316	79.1
"	Thailand	9	641	2 149	29.8	9	1 427	2 167	65.9
"	ALL SERVICES	1 724	310 874	460 948	67.4	1 721	310 950	460 567	67.5
Austrian Airlines (e)	Austria	236	66 950	78 808	85.0	236	58 090	78 808	73.7
British Airways	UK	1 092	296 907	401 342	74.0	1 092	281 393	401 342	70.1
Cargolux Airlines Intl (c)	Luxembourg	103	..	..	..	-	..	-	..
"	New Zealand	-	..	-	..	102	..	..	..
"	ALL SERVICES	103	-	-	..	102	-	-	..
Cathay Pacific Airways	Hong Kong	2 540	482 978	643 468	75.1	2 539	453 670	643 253	70.5
China Airlines	Taiwan	400	72 185	110 389	65.4	400	71 960	110 389	65.2
China Eastern Airlines	China	405	82 429	116 777	70.6	405	74 238	116 777	63.6
China Southern Airlines	China	284	59 563	81 683	72.9	283	56 143	81 399	69.0
Continental Micronesia	Guam	144	12 918	22 176	58.3	144	13 688	22 176	61.7
Emirates	New Zealand	1 448	216 567	461 016	47.0	1 450	220 822	461 526	47.8
"	United Arab Emirates	2 083	415 182	648 544	64.0	2 080	393 590	647 764	60.8
"	ALL SERVICES	3 531	631 749	1 109 560	56.9	3 530	614 412	1 109 290	55.4
Eva Air	Taiwan	301	51 825	75 852	68.3	301	50 188	75 852	66.2
Federal Express Corporation (c)	Philippines	-	..	-	..	265	..	..	..
"	USA	265	..	..	..	-	..	-	..
"	ALL SERVICES	265	-	-	..	265	-	-	..
Freedom Air International	New Zealand	2 395	226 869	336 311	67.5	2 392	224 383	344 697	65.1
Garuda Indonesia	Indonesia	1 181	155 608	238 765	65.2	1 180	154 073	238 482	64.6
"	New Zealand	105	8 844	30 765	28.7	105	6 773	30 765	22.0
"	ALL SERVICES	1 286	164 452	269 530	61.0	1 285	160 846	269 247	59.7
Gulf Air	Bahrain	364	63 791	96 460	66.1	364	63 518	96 460	65.8



**TABLE 3: AIRLINE PASSENGER CAPACITY AND UTILISATION TO AND FROM AUSTRALIA BY OPERATOR: Year ended December 2005**

Scheduled Operator	Service to/from	Inbound				Outbound			
		No. of Flights	Pax Carried	Seats Available	Seat Utilisation %	No. of Flights	Pax Carried	Seats Available	Seat Utilisation %
Hawaiian Airlines	USA	208	35 038	53 313	65.7	208	36 360	53 313	68.2
Japan Airlines	Japan	1 119	366 857	497 113	73.8	1 119	362 048	492 467	73.5
Jetstar (f)	New Zealand	124	13 187	21 948	60.1	124	16 280	21 948	74.2
Korean Air	Korea	625	124 379	161 794	76.9	625	125 809	161 701	77.8
Lan Chile	Chile	217	40 723	56 203	72.5	216	40 854	55 944	73.0
Lauda Air (g)	Austria	225	42 896	72 240	59.4	225	54 644	72 240	75.6
Lufthansa German Airlines (c) (h)	Germany	31	..	-	..	30	..	-	..
Malaysia Airlines	Malaysia	2 542	573 781	725 452	79.1	2 536	573 669	725 541	79.1
Martinair Holland (c)	Netherlands	97	..	-	..	97	..	-	..
Merpati Nusantara Airlines	Indonesia	105	1 334	3 150	42.3	105	1 718	3 150	54.5
Norfolk Jet Express	New Zealand	-	..	-	..	-	..	-	..
Pacific Blue	Fiji	444	45 059	79 920	56.4	447	47 152	80 460	58.6
"	New Zealand	1 381	167 765	248 580	67.5	1 379	164 998	248 220	66.5
"	Tonga	18	899	3 240	27.7	18	2 036	3 240	62.8
"	Vanuatu	102	9 979	18 360	54.4	104	10 398	18 720	55.5
"	ALL SERVICES	1 945	223 702	350 100	63.9	1 948	224 584	350 640	64.0
Philippine Airlines	Philippines	157	35 438	47 537	74.5	157	32 983	47 537	69.4
Polar Air Cargo (c) (i)	USA	-	..	..	..	-	..	-	..
Polynesian Airlines (j)	Tonga	-	..	-	..	1	144	154	93.5
"	Western Samoa	60	6 394	9 240	69.2	63	6 626	9 702	68.3
"	ALL SERVICES	60	6 394	9 240	69.2	64	6 770	9 856	68.7
Polynesian Blue (k)	Western Samoa	27	1 785	4 860	36.7	26	2 959	4 680	63.2
Qantas Airways	China	195	36 814	48 701	75.6	193	36 183	48 993	73.9
"	Fiji	1	..	..	..	1	..	..	..
"	Germany	454	132 680	155 239	85.5	456	131 602	155 543	84.6
"	Hong Kong	1 283	284 523	393 211	72.4	1 276	275 346	392 980	70.1
"	India	153	39 249	65 663	59.8	154	33 736	57 580	58.6
"	Indonesia	517	55 790	96 951	57.5	515	55 367	96 753	57.2
"	Japan	1 542	313 108	442 926	70.7	1 544	317 812	443 233	71.7
"	Korea	2	250	454	55.1	2	238	454	52.4
"	Malaysia	..	..	..	..	1	..	..	..
"	Netherlands	..	..	..	..	3	..	..	..
"	New Caledonia	212	28 345	40 136	70.6	213	28 058	40 354	69.5
"	New Zealand	5 744	813 924	1 085 758	75.0	5 752	818 729	1 088 753	75.2
"	Philippines	188	45 389	58 127	78.1	188	41 326	58 177	71.0
"	Singapore	1 101	257 147	332 753	77.3	1 097	244 916	332 475	73.7
"	South Africa	228	69 272	82 222	84.2	228	63 672	80 179	79.4
"	UK	1 405	437 667	530 163	82.6	1 405	435 800	530 010	82.2
"	USA	2 296	601 394	758 255	79.3	2 256	615 384	769 543	80.0
"	ALL SERVICES	15 321	3 115 552	4 090 559	76.2	15 284	3 098 169	4 095 027	75.7
Royal Brunei Airlines	Brunei	625	63 650	115 097	55.3	625	61 220	115 046	53.2
"	New Zealand	155	20 236	32 067	63.1	155	17 505	32 016	54.7
"	ALL SERVICES	780	83 886	147 164	57.0	780	78 725	147 062	53.5
Singapore Airlines	Singapore	4 574	1 119 978	1 489 542	75.2	4 575	1 092 792	1 489 498	73.4
Solomon Airlines	Solomon Islands	110	9 982	14 704	67.9	114	10 140	15 392	65.9
South African Airways	South Africa	264	48 416	62 531	77.4	262	40 117	62 059	64.6

**TABLE 3: AIRLINE PASSENGER CAPACITY AND UTILISATION TO AND FROM AUSTRALIA BY OPERATOR: Year ended December 2005**

Scheduled Operator	Service to/from	Inbound				Outbound			
		No. of Flights	Pax Carried	Seats Available	Seat Utilisation %	No. of Flights	Pax Carried	Seats Available	Seat Utilisation %
Thai Airways International	New Zealand	363	32 270	145 310	22.2	364	29 731	145 715	20.4
"	Thailand	1 353	294 974	491 393	60.0	1 349	295 659	489 913	60.3
"	ALL SERVICES	1 716	327 244	636 703	51.4	1 713	325 390	635 628	51.2
Tiger Airways (f)	Singapore	7	535	1 260	42.5	7	1 200	1 260	95.2
Transair (c) (l)	Papua New Guinea	164	..	-	..	164	..	-	..
United Airlines	USA	781	231 552	271 007	85.4	780	235 421	270 660	87.0
United Parcel Service (c)	Hong Kong	-	..	-	..	81	..	-	..
"	Taiwan	-	..	-	..	16	..	-	..
"	USA	102	..	-	..	-	..	-	..
"	ALL SERVICES	102	-	-	..	97	-	-	..
Valuair (m)	Singapore	242	19 249	37 212	51.7	241	17 855	37 086	48.1
Vietnam Airlines (n)	Vietnam	350	62 266	118 137	52.7	350	76 885	118 150	65.1
Virgin Atlantic Airways	UK	362	52 699	110 995	47.5	362	55 090	110 995	49.6
<b>TOTAL</b>		<b>59 372</b>	<b>10 689 056</b>	<b>15 123 981</b>	<b>70.7</b>	<b>59 310</b>	<b>10 561 482</b>	<b>15 127 303</b>	<b>69.8</b>

Please refer to explanatory notes - paragraphs 4, 5, 7 and 14 in particular.

In addition to the above, please note the following regarding **Seat Factors** shown in this table:

Traffic shown in this table for Australian Airlines and Qantas Airways will differ from traffic shown in Tables 1 and 2 because of the inclusion in this table of total traffic into and ex Australia (for seat factor purposes) whereas Tables 1 and 2 include uplift/discharge traffic only.

All other airlines report uplift/discharge traffic only. Therefore, for other airlines operating **via** Australia, the seat factors shown here reflect the total seats on the aircraft but only the Australian uplift/discharge portion of passengers on the aircraft. The true seat factors for airlines that operate **via** Australia will most likely be higher than what is shown in this table.

For example, on Dubai-Sydney-Auckland services:

Seats on the Dubai-Sydney sector are taken up by Dubai-Sydney and Dubai-Auckland passengers. However, when calculating seat factors, only the Dubai-Sydney passengers are used.

Similarly, seats on the Sydney-Auckland sector are taken up by Sydney-Auckland and Dubai-Auckland passengers. However, when calculating seat factors, only the Sydney-Auckland passengers are used.

The following airlines are affected:

Emirates, Garuda Indonesia, Royal Brunei Airlines and Thai Airways International

(a) Service ceased November 2005. No data received for November 2005 and missing data for Adelaide and Melbourne for September 2005.

(b) Service commenced July 2005.

(c) Freight flights only.

(d) Nil operations during August 2005.

(e) Shown as Lauda Air to June 2005.

(f) Service commenced December 2005.

(g) Shown as Austrian Airlines for July 2005 and onwards.

(h) Service ceased March 2005.

(i) Service ceased October 2005. No data received for March 2003 and onwards.

(j) Data not received for August, September & October 2005. Service ceased October 2005.

(k) Service commenced November 2005.

(l) Commenced reporting from January 2005.

(m) Data not received for September & October 2005. Service commenced December 2004 and ceased October 2005.

(n) No data received for inbound operations to Sydney for August 2002 to May 2004 and for July 2004 to November 2004 and January 2005 to March 2005 and May 2005. Data for outbound operations have been received for July 2003 onwards.

Airlines PNG commenced scheduled operations in November 2005. Data has not been collected as yet.

**TABLE 4: SCHEDULED INTERNATIONAL AIRPORT TRAFFIC AND AIRCRAFT MOVEMENTS: Year ended December**

		Inbound		(%)	Outbound		(%)	Total		(%)	(%) of
		2004	2005	Change	2004	2005	Change	2004	2005	Change	TOTAL
Adelaide	Passengers	147 055	172 571	17.4	139 028	161 727	16.3	286 083	334 298	16.9	1.6
"	Freight (Tonnes)	6 235	7 199	15.5	7 306	8 227	12.6	13 542	15 426	13.9	2.2
"	Aircraft Movements	995	1 169	17.5	995	1 170	17.6	1 990	2 339	17.5	1.7
Brisbane	Passengers	1 652 284	1 827 122	10.6	1 614 197	1 779 568	10.2	3 266 481	3 606 690	10.4	17.3
"	Freight (Tonnes)	38 925	42 579	9.4	38 968	38 422	-1.4	77 893	81 002	4.0	11.4
"	Aircraft Movements	10 513	11 297	7.5	10 525	11 300	7.4	21 038	22 597	7.4	16.8
Cairns	Passengers	430 620	433 214	0.6	416 226	427 988	2.8	846 846	861 202	1.7	4.1
"	Freight (Tonnes)	2 994	3 341	11.6	7 917	8 363	5.6	10 911	11 704	7.3	1.7
"	Aircraft Movements	4 348	4 121	-5.2	4 346	4 119	-5.2	8 694	8 240	-5.2	6.1
Canberra	Passengers	994	..	-100.0	1 002	..	-100.0	1 996	-	-100.0	..
"	Freight (Tonnes)	-	..	..	-	..	..	-	-	..	..
"	Aircraft Movements	21	..	-100.0	21	..	-100.0	42	-	-100.0	..
Darwin	Passengers	49 885	52 436	5.1	48 489	51 946	7.1	98 374	104 382	6.1	0.5
"	Freight (Tonnes)	361	426	17.9	198	230	16.5	558	656	17.4	0.1
"	Aircraft Movements	877	1 018	16.1	876	1 017	16.1	1 753	2 035	16.1	1.5
Gold Coast/Coolangatta	Passengers	67 554	100 791	49.2	68 854	102 732	49.2	136 408	203 523	49.2	1.0
"	Freight (Tonnes)	230	-	-100.0	2	81	4761.4	232	81	-64.9	0.0
"	Aircraft Movements	962	1 305	35.7	958	1 297	35.4	1 920	2 602	35.5	1.9
Melbourne	Passengers	1 993 040	2 150 224	7.9	1 943 395	2 073 388	6.7	3 936 435	4 223 612	7.3	20.2
"	Freight (Tonnes)	108 764	108 828	0.1	85 477	87 624	2.5	194 241	196 452	1.1	27.7
"	Aircraft Movements	13 335	13 370	0.3	13 346	13 386	0.3	26 681	26 756	0.3	19.9
Norfolk Island	Passengers	9 586	9 812	2.4	9 627	9 867	2.5	19 213	19 679	2.4	0.1
"	Freight (Tonnes)	115	104	-10.0	14	15	8.3	129	119	-8.0	0.0
"	Aircraft Movements	104	104	..	104	103	-1.0	208	207	-0.5	0.2
Perth	Passengers	930 693	1 022 241	9.8	896 696	984 784	9.8	1 827 389	2 007 025	9.8	9.6
"	Freight (Tonnes)	22 051	23 921	8.5	33 333	32 703	-1.9	55 383	56 624	2.2	8.0
"	Aircraft Movements	4 737	5 368	13.3	4 787	5 406	12.9	9 524	10 774	13.1	8.0
Sydney	Passengers	4 425 862	4 734 192	7.0	4 525 963	4 781 791	5.7	8 951 825	9 515 983	6.3	45.6
"	Freight (Tonnes)	203 747	228 013	11.9	119 856	118 539	-1.1	323 604	346 552	7.1	48.9
"	Aircraft Movements	28 085	29 407	4.7	28 031	29 296	4.5	56 116	58 703	4.6	43.7
TOTAL	Passengers	9 707 573	10 502 603	8.2	9 663 477	10 373 791	7.4	19 371 050	20 876 394	7.8	100.0
	Freight (Tonnes)	383 423	414 411	8.1	293 070	294 204	0.4	676 493	708 616	4.7	100.0
	Aircraft Movements	63 977	67 159	5.0	63 989	67 094	4.9	127 966	134 253	4.9	100.0

**TABLE 5: SCHEDULED INTERNATIONAL TRAFFIC BY CITY PAIRS: Year ended December**

Foreign Port	Australian Port	Passengers						Freight (tonnes)					
		2004			2005			2004			2005		
		Inbound	Outbound	Total	Inbound	Outbound	Total	Inbound	Outbound	Total	Inbound	Outbound	Total
Auckland	Adelaide	1 019	1 192	2 211	15 575	15 140	30 715	0.6	1.2	1.9	91.9	32.7	124.6
Bombay	"	5	0	5	0	0	0	0.0	0.0	0.0	0.0	0.0	0.0
Denpasar	"	19 190	19 929	39 119	16 178	15 446	31 624	265.0	78.8	343.7	260.9	56.8	317.7
Hong Kong	"	15 111	9 940	25 051	16 708	11 093	27 801	606.1	637.8	1 243.9	681.6	673.9	1 355.5
Jakarta	"	0	0	0	5	0	5	0.0	0.0	0.0	0.0	0.0	0.0
Kuala Lumpur	"	44 086	43 359	87 445	48 291	47 676	95 967	1 688.0	1 199.6	2 887.6	1 418.9	775.2	2 194.1
London	"	0	0	0	14	0	14	0.0	0.0	0.0	0.0	0.0	0.0
Singapore	"	67 612	64 608	132 220	75 800	72 372	148 172	3 675.7	5 388.9	9 064.5	4 745.8	6 688.1	11 433.9
Tokyo	"	32	0	32	0	0	0	0.0	0.0	0.0	0.0	0.0	0.0
<b>Total</b>	<b>Adelaide</b>	147 055	139 028	286 083	172 571	161 727	334 298	6 235.4	7 306.3	13 541.7	7 199.1	8 226.7	15 425.8
Anchorage	Brisbane	0	0	0	0	0	0	0.0	0.0	0.0	0.0	0.0	0.0
Auckland	"	345 599	363 229	708 828	375 647	396 632	772 279	8 216.0	8 546.5	16 762.4	9 589.7	9 635.0	19 224.7
Bandar Seri Begawan	"	17 771	19 241	37 012	15 132	14 443	29 575	606.7	1 018.1	1 624.8	299.6	956.0	1 255.6
Bangkok	"	38 368	38 573	76 941	37 736	37 003	74 739	1 386.2	1 148.9	2 535.0	1 455.4	954.8	2 410.2
Beijing	"	0	0	0	0	0	0	0.0	0.0	0.0	0.0	0.0	0.0
Belo Horizonte	"	0	0	0	0	0	0	0.0	0.0	0.0	0.0	78.0	78.0
Cebu	"	0	0	0	0	0	0	0.0	0.0	0.0	0.0	19.5	19.5
Chicago	"	0	0	0	0	0	0	0.0	0.0	0.0	0.0	0.0	0.0
Christchurch	"	129 289	131 163	260 452	130 037	129 157	259 194	183.4	76.0	259.4	369.3	418.8	788.1
Denpasar	"	28 319	29 172	57 491	33 253	32 014	65 267	700.1	292.2	992.2	687.7	218.6	906.3
Dubai	"	50 933	53 450	104 383	62 583	63 827	126 410	1 273.6	1 205.7	2 479.3	1 335.0	1 614.8	2 949.8
Dunedin	"	15 617	16 290	31 907	19 921	20 844	40 765	0.0	0.0	0.0	0.0	0.0	0.0
Frankfurt	"	0	0	0	0	0	0	0.0	0.0	0.0	0.0	0.0	0.0
Hamilton	"	21 646	21 972	43 618	19 222	19 611	38 833	0.0	0.0	0.0	0.0	0.0	0.0
Hong Kong	"	81 146	74 950	156 096	107 596	98 004	205 600	4 476.2	3 093.7	7 570.0	5 614.8	3 432.6	9 047.4
Honiara	"	12 567	12 970	25 537	12 625	12 101	24 726	159.4	44.9	204.3	80.9	40.4	121.4
Honolulu	"	0	0	0	0	0	0	0.0	0.0	0.0	0.0	0.0	0.0
Jakarta	"	0	0	0	186	0	186	0.0	0.0	0.0	0.0	0.0	0.0
Kuala Lumpur	"	53 804	54 788	108 592	64 348	66 102	130 450	1 773.0	1 048.7	2 821.7	1 781.6	870.1	2 651.7
Los Angeles	"	61 469	60 717	122 186	82 332	82 382	164 714	1 107.4	711.0	1 818.4	975.9	734.9	1 710.8
Manila	"	8 944	8 621	17 565	7 820	7 278	15 098	6.9	108.3	115.2	7.2	115.0	122.3
Nadi	"	48 394	48 693	97 087	67 163	66 192	133 355	230.0	485.6	715.6	199.4	440.1	639.6
Nauru	"	3 795	3 391	7 186	3 893	3 733	7 626	11.5	175.7	187.2	13.6	198.4	212.1
New York	"	20	0	20	3	0	3	0.0	0.0	0.0	0.0	0.0	0.0
Noumea	"	17 534	18 815	36 349	19 000	20 972	39 972	30.7	151.6	182.3	14.1	153.2	167.3
Osaka	"	85 568	24 606	110 174	84 573	26 461	111 034	922.3	1 459.5	2 381.8	826.9	1 068.2	1 895.1
Palmerston	"	20 846	20 594	41 440	21 837	21 312	43 149	0.0	0.0	0.0	0.0	0.0	0.0
Port Moresby	"	29 841	33 972	63 813	30 570	36 333	66 903	1 626.1	2 492.8	4 118.9	1 039.1	2 941.5	3 980.6
Port Vila	"	13 513	13 356	26 869	19 751	19 385	39 136	24.9	133.0	157.8	39.2	116.2	155.4
Queenstown	"	2 328	2 670	4 998	2 904	3 047	5 951	0.0	0.0	0.0	0.0	0.0	0.0
Seoul	"	35 003	27 186	62 189	33 953	31 796	65 749	816.3	1 592.1	2 408.4	709.5	1 247.1	1 956.6
Shanghai	"	175	175	350	0	0	0	0.0	0.0	0.0	0.0	0.0	0.0
Singapore	"	314 208	313 656	627 864	332 673	321 424	654 097	9 576.4	10 155.9	19 732.3	11 216.2	9 551.0	20 767.3
Taipei	"	44 958	45 040	89 998	57 873	57 638	115 511	2 182.3	914.1	3 096.4	3 302.0	1 025.7	4 327.7
Tokyo	"	124 066	130 361	254 427	118 594	127 415	246 009	3 608.6	4 098.7	7 707.3	2 982.9	2 561.0	5 543.9
Wellington	"	46 563	46 546	93 109	65 897	64 462	130 359	7.2	15.5	22.7	39.1	31.5	70.6

**TABLE 5: SCHEDULED INTERNATIONAL TRAFFIC BY CITY PAIRS: Year ended December**

Foreign Port	Australian Port	Passengers						Freight (tonnes)					
		2004			2005			2004			2005		
		Inbound	Outbound	Total	Inbound	Outbound	Total	Inbound	Outbound	Total	Inbound	Outbound	Total
<b>Total</b>	<b>Brisbane</b>	1 652 284	1 614 197	3 266 481	1 827 122	1 779 568	3 606 690	38 925.1	38 968.2	77 893.3	42 579.3	38 422.4	81 001.7
Auckland	Cairns	21 940	23 432	45 372	22 098	23 967	46 065	152.1	109.0	261.1	119.9	444.2	564.1
Fukuoka	"	24 830	25 018	49 848	22 881	21 183	44 064	45.3	311.8	357.0	32.8	273.3	306.1
Guam	"	13 405	13 967	27 372	12 918	13 688	26 606	0.7	38.1	38.8	6.2	74.8	81.0
Hong Kong	"	49 982	42 018	92 000	50 462	49 413	99 875	1 051.4	2 836.1	3 887.5	818.8	3 046.2	3 865.0
Kota Kinabalu	"	416	326	742	0	0	0	0.0	0.0	0.0	0.0	0.0	0.0
Nagoya	"	70 101	67 010	137 111	68 633	67 449	136 082	133.2	880.6	1 013.8	189.8	386.8	576.7
Osaka	"	58 994	54 708	113 702	57 708	51 558	109 266	525.8	1 688.7	2 214.4	448.5	1 297.2	1 745.7
Port Moresby	"	26 873	23 248	50 121	27 841	22 609	50 450	84.4	152.6	237.0	141.5	422.6	564.1
Sapporo	"	3 140	2 900	6 040	7 528	8 008	15 536	0.8	1.3	2.1	15.3	14.3	29.6
Singapore	"	36 666	41 694	78 360	36 144	44 955	81 099	808.4	183.7	992.0	515.0	360.1	875.1
Tokyo	"	124 273	121 905	246 178	127 001	125 158	252 159	192.1	1 714.8	1 907.0	1 053.7	2 043.2	3 096.9
<b>Total</b>	<b>Cairns</b>	430 620	416 226	846 846	433 214	427 988	861 202	2 994.2	7 916.6	10 910.8	3 341.5	8 362.9	11 704.3
Nadi	Canberra	994	1 002	1 996	0	0	0	0.0	0.0	0.0	0.0	0.0	0.0
<b>Total</b>	<b>Canberra</b>	994	1 002	1 996	0	0	0	0.0	0.0	0.0	0.0	0.0	0.0
Bandar Seri Begawan	Darwin	8 736	9 038	17 774	8 481	7 986	16 467	36.9	20.3	57.2	21.0	10.9	31.9
Bangkok	"	0	1	1	0	0	0	0.0	0.0	0.0	0.0	0.0	0.0
Denpasar	"	16 355	18 181	34 536	14 112	16 088	30 200	5.3	4.4	9.7	3.9	6.1	10.0
Hong Kong	"	1	0	1	0	0	0	0.0	0.0	0.0	0.0	0.0	0.0
Jakarta	"	0	0	0	0	37	37	0.0	0.4	0.4	0.0	0.2	0.2
Kuala Lumpur	"	0	0	0	0	0	0	0.0	33.8	33.8	0.0	0.0	0.0
Kupang	"	619	895	1 514	1 334	1 718	3 052	0.0	0.0	0.0	0.0	0.0	0.0
Singapore	"	24 174	20 374	44 548	28 509	25 928	54 437	318.6	138.8	457.4	400.6	213.1	613.7
Tokyo	"	0	0	0	0	189	189	0.0	0.0	0.0	0.0	0.0	0.0
<b>Total</b>	<b>Darwin</b>	49 885	48 489	98 374	52 436	51 946	104 382	360.8	197.7	558.5	425.5	230.2	655.7
Auckland	Gold Coast/Coolangatta	27 165	27 206	54 371	39 868	40 231	80 099	0.0	0.0	0.0	0.0	0.0	0.0
Christchurch	"	15 909	15 148	31 057	32 077	31 000	63 077	0.0	0.0	0.0	0.0	0.0	0.0
Dunedin	"	6 365	6 484	12 849	5 659	5 193	10 852	0.0	0.0	0.0	0.0	0.0	0.0
Fukuoka	"	29	0	29	75	67	142	0.0	0.0	0.0	0.0	0.0	0.0
Hamilton	"	9 310	9 354	18 664	10 385	10 356	20 741	0.0	0.0	0.0	0.0	0.0	0.0
Osaka	"	8 776	10 662	19 438	7 531	10 350	17 881	230.0	1.7	231.7	0.0	81.3	81.3
Wellington	"	0	0	0	5 196	5 535	10 731	0.0	0.0	0.0	0.0	0.0	0.0
<b>Total</b>	<b>Gold Coast/Coolangatta</b>	67 554	68 854	136 408	100 791	102 732	203 523	230.0	1.7	231.7	0.0	81.3	81.3
Amsterdam	Melbourne	0	0	0	0	0	0	0.0	0.0	0.0	0.0	0.0	0.0
Anchorage	"	0	0	0	0	0	0	0.0	0.0	0.0	0.0	0.0	0.0
Atlanta	"	0	0	0	0	0	0	385.3	0.0	385.3	0.0	0.0	0.0
Auckland	"	313 449	314 282	627 731	329 015	323 696	652 711	17 741.0	16 727.3	34 468.3	17 909.0	17 847.8	35 756.8
Bangkok	"	108 409	93 126	201 535	106 311	91 101	197 412	4 588.2	4 895.7	9 484.0	5 483.8	4 727.0	10 210.8
Beijing	"	11 560	7 973	19 533	13 172	9 000	22 172	76.1	175.2	251.3	33.9	105.9	139.8
Chicago	"	0	0	0	0	0	0	5 218.6	613.8	5 832.4	4 806.4	0.0	4 806.4
Christchurch	"	118 141	119 190	237 331	126 500	125 748	252 248	1 580.0	828.9	2 408.9	2 203.4	1 050.0	3 253.4
Denpasar	"	69 639	68 553	138 192	58 402	56 939	115 341	1 744.5	1 534.5	3 279.0	1 251.9	1 551.2	2 803.2
Dubai	"	101 822	97 879	199 701	128 379	122 806	251 185	3 084.4	3 671.8	6 756.2	4 358.2	6 037.2	10 395.4
Dunedin	"	11 071	10 413	21 484	9 885	9 169	19 054	0.0	0.0	0.0	0.0	0.0	0.0
Frankfurt	"	0	0	0	0	0	0	1 781.6	1 460.5	3 242.1	150.0	367.9	517.9
Guangzhou	"	14 699	11 957	26 656	20 462	15 934	36 396	462.4	104.6	566.9	624.8	178.8	803.6

**TABLE 5: SCHEDULED INTERNATIONAL TRAFFIC BY CITY PAIRS: Year ended December**

Foreign Port	Australian Port	Passengers						Freight (tonnes)					
		2004			2005			2004			2005		
		Inbound	Outbound	Total	Inbound	Outbound	Total	Inbound	Outbound	Total	Inbound	Outbound	Total
Hamilton	Melbourne	10 748	10 394	21 142	9 952	9 715	19 667	0.0	0.0	0.0	0.0	0.0	0.0
Hanoi	"	3 453	4 261	7 714	3 749	4 753	8 502	0.0	30.9	30.9	0.0	33.0	33.0
Ho Chi Minh City	"	29 992	28 378	58 370	32 834	29 947	62 781	879.0	236.1	1 115.1	1 087.4	182.3	1 269.7
Hong Kong	"	185 718	193 289	379 007	211 335	202 013	413 348	17 321.4	14 851.4	32 172.8	18 997.9	14 377.2	33 375.1
Honolulu	"	79	7 677	7 756	73	0	73	0.0	115.7	115.7	0.0	0.0	0.0
Jakarta	"	0	0	0	0	0	0	0.0	79.3	79.3	0.0	0.0	0.0
Karachi	"	0	0	0	0	0	0	0.0	0.0	0.0	0.0	0.0	0.0
Kuala Lumpur	"	148 108	144 842	292 950	172 415	170 604	343 019	12 724.7	5 375.8	18 100.5	9 993.0	5 476.7	15 469.7
Lahore	"	0	0	0	0	0	0	0.0	0.0	0.0	0.0	0.0	0.0
London	"	97 512	98 337	195 849	105 507	106 183	211 690	4 927.2	588.3	5 515.5	4 375.6	856.8	5 232.5
Los Angeles	"	140 801	131 085	271 886	148 980	139 636	288 616	2 960.4	4 123.4	7 083.7	2 799.1	4 471.0	7 270.1
Luxembourg	"	0	0	0	0	0	0	4 585.0	0.0	4 585.0	4 864.9	0.0	4 864.9
Manila	"	14 442	12 209	26 651	14 121	11 390	25 511	503.0	678.0	1 181.0	667.5	388.0	1 055.4
Mauritius	"	7 160	7 351	14 511	6 379	6 848	13 227	224.3	249.3	473.7	125.9	177.9	303.8
Nadi	"	48 076	49 392	97 468	53 490	56 360	109 850	982.7	1 115.1	2 097.8	1 204.3	1 437.2	2 641.5
Nauru	"	1 097	1 116	2 213	47	45	92	1.0	27.8	28.7	0.0	2.1	2.1
New Delhi	"	0	0	0	0	0	0	0.0	1.1	1.1	0.0	0.0	0.0
New York	"	1 969	2 268	4 237	1 850	2 494	4 344	24.2	0.0	24.2	429.4	0.0	429.4
Noumea	"	32	0	32	0	0	0	0.0	0.0	0.0	0.0	0.0	0.0
Palmerston	"	10 177	9 908	20 085	8 958	8 659	17 617	0.0	0.0	0.0	0.0	0.0	0.0
Penang	"	0	0	0	0	0	0	0.0	1.4	1.4	0.0	0.0	0.0
Phuket	"	0	13 583	13 583	0	9 435	9 435	0.0	89.4	89.4	0.0	12.3	12.3
Port Vila	"	1 007	1 704	2 711	1 019	1 505	2 524	0.0	0.0	0.0	0.0	0.0	0.0
Queenstown	"	1 258	1 428	2 686	1 186	1 517	2 703	0.0	0.0	0.0	0.0	0.0	0.0
Rarotonga	"	0	0	0	431	555	986	0.0	0.0	0.0	0.0	0.0	0.0
Sapporo	"	0	0	0	0	0	0	0.0	0.0	0.0	0.0	0.0	0.0
Shanghai	"	27 958	20 948	48 906	37 145	38 000	75 145	732.2	263.2	995.4	1 490.8	1 004.4	2 495.1
Sharjah	"	0	0	0	0	0	0	1.5	1.0	2.5	0.0	0.0	0.0
Singapore	"	371 639	355 796	727 435	406 951	385 947	792 898	23 991.3	25 107.0	49 098.4	23 860.4	25 214.2	49 074.6
Tianjin	"	0	0	0	0	0	0	0.0	0.0	0.0	0.0	60.2	60.2
Tokyo	"	53 791	34 841	88 632	48 981	38 404	87 385	1 896.7	2 328.5	4 225.2	1 747.3	1 775.2	3 522.5
Vienna	"	28 071	28 018	56 089	28 628	30 145	58 773	0.0	0.0	0.0	0.0	0.0	0.0
Wellington	"	61 162	63 197	124 359	64 067	64 840	128 907	347.7	201.5	549.2	363.0	290.1	653.0
<b>Total</b>	<b>Melbourne</b>	1 993 040	1 943 395	3 936 435	2 150 224	2 073 388	4 223 612	108 764.3	85 476.7	194 240.9	108 827.9	87 624.3	196 452.2
Auckland	Norfolk Island	9 586	9 627	19 213	9 812	9 867	19 679	115.3	14.1	129.4	103.8	15.3	119.1
<b>Total</b>	<b>Norfolk Island</b>	9 586	9 627	19 213	9 812	9 867	19 679	115.3	14.1	129.4	103.8	15.3	119.1
Auckland	Perth	45 166	44 482	89 648	54 203	52 140	106 343	1 621.4	989.3	2 610.7	1 943.6	1 067.4	3 010.9
Bandar Seri Begawan	"	20 628	21 801	42 429	23 507	23 231	46 738	131.2	640.8	772.0	127.8	641.2	769.0
Bangkok	"	47 052	34 567	81 619	40 605	35 091	75 696	1 505.3	1 636.8	3 142.1	1 604.2	1 870.7	3 474.9
Bombay	"	0	0	0	0	0	0	0.0	0.0	0.0	50.1	0.0	50.1
Chicago	"	0	0	0	0	0	0	0.0	0.0	0.0	0.0	3.1	3.1
Denpasar	"	106 510	106 887	213 397	106 832	107 262	214 094	148.9	294.9	443.8	101.6	213.1	314.7
Dubai	"	75 174	73 988	149 162	80 117	79 358	159 475	1 625.8	2 266.6	3 892.4	1 599.5	2 455.6	4 055.1
Frankfurt	"	0	0	0	0	0	0	0.0	0.0	0.0	4.2	0.0	4.2
Hong Kong	"	53 657	47 442	101 099	65 792	57 400	123 192	2 372.5	2 770.7	5 143.2	2 585.5	3 561.1	6 146.6
Jakarta	"	14 710	15 060	29 770	14 568	14 747	29 315	101.3	336.8	438.1	11.0	2.7	13.7

**TABLE 5: SCHEDULED INTERNATIONAL TRAFFIC BY CITY PAIRS: Year ended December**

Foreign Port	Australian Port	Passengers						Freight (tonnes)					
		2004			2005			2004			2005		
		Inbound	Outbound	Total	Inbound	Outbound	Total	Inbound	Outbound	Total	Inbound	Outbound	Total
Johannesburg	Perth	50 659	44 687	95 346	48 897	40 536	89 433	1 302.0	2 331.1	3 633.1	1 096.3	2 247.4	3 343.6
Kuala Lumpur	"	98 668	95 150	193 818	105 268	104 080	209 348	2 280.1	535.8	2 816.0	2 239.5	986.3	3 225.8
Kuching	"	7 124	7 431	14 555	7 423	8 567	15 990	0.7	124.5	125.2	0.9	83.1	84.0
London	"	5 446	3 794	9 240	26 385	27 557	53 942	94.8	22.3	117.1	478.0	129.8	607.8
Mauritius	"	6 895	6 892	13 787	8 111	8 161	16 272	121.6	285.6	407.1	32.7	239.1	271.9
Osaka	"	0	0	0	158	0	158	0.0	0.0	0.0	0.0	0.0	0.0
Paris	"	7 932	7 521	15 453	0	0	0	240.8	4.6	245.3	0.0	0.0	0.0
Phuket	"	0	12 153	12 153	0	5 620	5 620	0.0	76.8	76.8	0.0	22.8	22.8
Shanghai	"	0	0	0	0	0	0	0.0	5.7	5.7	0.0	0.0	0.0
Singapore	"	364 433	348 737	713 170	412 249	393 444	805 693	10 047.1	20 085.8	30 133.0	11 234.4	18 232.2	29 466.6
Tokyo	"	26 639	26 104	52 743	28 126	27 590	55 716	457.0	924.7	1 381.7	811.8	947.4	1 759.1
<b>Total</b>	<b>Perth</b>	930 693	896 696	1 827 389	1 022 241	984 784	2 007 025	22 050.5	33 332.8	55 383.3	23 921.1	32 702.7	56 623.8
Almaty	Sydney	0	0	0	0	0	0	0.0	0.0	0.0	0.0	15.4	15.4
Amsterdam	"	0	0	0	0	0	0	8 126.7	1 255.5	9 382.2	7 582.1	1 351.1	8 933.1
Anchorage	"	0	0	0	0	0	0	0.0	0.0	0.0	0.0	0.0	0.0
Apia	"	5 867	6 768	12 635	6 394	7 674	14 068	52.7	31.3	84.0	8.7	15.6	24.3
Athens	"	314	0	314	0	0	0	0.0	0.0	0.0	0.0	0.0	0.0
Atlanta	"	0	0	0	0	0	0	0.0	0.0	0.0	0.0	0.0	0.0
Auckland	"	623 932	633 806	1 257 738	618 037	624 596	1 242 633	25 542.8	31 597.9	57 140.7	26 659.9	34 741.9	61 401.8
Bahrain	"	49 298	52 000	101 298	53 204	54 081	107 285	1 465.9	1 371.0	2 836.9	1 632.2	2 172.5	3 804.7
Bandar Seri Begawan	"	2 333	2 549	4 882	16 530	15 560	32 090	161.0	93.5	254.5	784.0	701.0	1 485.0
Bangkok	"	237 751	234 544	472 295	244 004	240 159	484 163	6 971.6	4 073.2	11 044.8	8 943.3	3 450.3	12 393.6
Beijing	"	22 158	25 065	47 223	24 278	26 186	50 464	185.7	264.2	449.8	72.9	522.0	594.9
Belo Horizonte	"	0	0	0	0	0	0	0.0	0.0	0.0	0.0	0.0	0.0
Bombay	"	13 269	14 269	27 538	36 983	31 865	68 848	254.1	40.3	294.4	915.4	154.5	1 069.9
Buenos Aires	"	16 144	16 072	32 216	17 697	17 731	35 428	95.8	183.1	278.9	222.7	274.9	497.6
Cebu	"	0	0	0	0	0	0	0.0	0.0	0.0	0.0	0.0	0.0
Chicago	"	10 598	9 950	20 548	14 573	15 801	30 374	1 159.2	0.0	1 159.3	7 892.5	21.0	7 913.5
Christchurch	"	257 047	256 734	513 781	257 101	253 791	510 892	5 517.7	5 993.1	11 510.8	5 881.5	5 043.3	10 924.9
Denpasar	"	97 699	99 202	196 901	83 895	82 850	166 745	2 215.1	1 048.9	3 264.0	2 013.3	997.8	3 011.2
Dubai	"	60 616	56 763	117 379	99 952	93 589	193 541	2 705.9	2 978.3	5 684.1	4 059.2	3 533.5	7 592.7
Dunedin	"	11 602	11 413	23 015	13 186	12 978	26 164	0.0	0.0	0.0	0.0	0.0	0.0
Fairbanks	"	0	0	0	0	0	0	0.0	0.0	0.0	0.0	0.0	0.0
Frankfurt	"	39 454	39 023	78 477	39 332	41 730	81 062	2 170.9	187.4	2 358.3	5 588.2	190.2	5 778.4
Guangzhou	"	35 019	37 425	72 444	49 677	50 293	99 970	1 850.7	109.3	1 960.0	2 614.8	119.5	2 734.2
Hamilton	"	10 605	10 685	21 290	10 968	11 286	22 254	0.0	0.0	0.0	0.0	0.0	0.0
Hanoi	"	722	6 700	7 422	4 515	7 186	11 701	0.0	0.0	0.0	0.0	0.0	0.0
Ho Chi Minh City	"	5 172	35 310	40 482	21 168	34 999	56 167	233.0	189.5	422.5	932.1	169.2	1 101.3
Hong Kong	"	306 679	298 307	604 986	394 937	384 450	779 387	24 014.0	10 133.4	34 147.4	32 044.5	10 610.2	42 654.7
Honolulu	"	91 595	77 912	169 507	107 146	98 348	205 494	3 509.1	3 799.1	7 308.2	3 258.1	3 280.1	6 538.2
Jakarta	"	39 999	38 921	78 920	31 180	29 788	60 968	623.6	1 240.3	1 863.8	475.8	953.4	1 429.2
Johannesburg	"	61 043	55 561	116 604	57 632	53 616	111 248	1 457.9	575.5	2 033.4	1 268.4	555.9	1 824.3
Kota Kinabalu	"	15 851	16 048	31 899	4 856	4 414	9 270	190.0	186.3	376.3	2.3	84.7	87.0
Kuala Lumpur	"	160 936	155 829	316 765	189 227	185 923	375 150	12 939.8	2 002.5	14 942.2	9 255.3	1 775.5	11 030.8
Kuching	"	0	511	511	0	1 685	1 685	0.0	0.0	0.0	0.0	30.5	30.5
London	"	202 173	206 709	408 882	238 572	248 369	486 941	8 164.1	1 868.7	10 032.8	9 271.0	2 761.5	12 032.5

**TABLE 5: SCHEDULED INTERNATIONAL TRAFFIC BY CITY PAIRS: Year ended December**

Foreign Port	Australian Port	Passengers						Freight (tonnes)					
		2004			2005			2004			2005		
		Inbound	Outbound	Total	Inbound	Outbound	Total	Inbound	Outbound	Total	Inbound	Outbound	Total
Los Angeles	Sydney	304 111	318 271	622 382	319 210	328 995	648 205	21 304.8	4 147.2	25 452.0	22 824.2	5 523.2	28 347.4
Louisville	"	0	0	0	0	0	0	4 613.1	0.0	4 613.1	4 813.8	0.0	4 813.8
Luzon Island	"	0	0	0	0	0	0	0.0	2.6	2.6	0.0	0.0	0.0
Macau	"	0	0	0	0	0	0	0.0	83.0	83.0	0.0	0.0	0.0
Manchester (US)	"	0	5	5	0	0	0	0.0	0.0	0.0	0.0	0.0	0.0
Manila	"	57 515	57 534	115 049	55 822	53 302	109 124	1 655.2	568.8	2 224.1	952.3	433.2	1 385.5
Mauritius	"	5 107	4 299	9 406	7 367	6 274	13 641	89.0	84.6	173.6	70.5	32.0	102.5
Miami	"	0	0	0	0	0	0	75.5	0.0	75.5	0.0	0.0	0.0
Nadi	"	114 474	113 084	227 558	126 379	123 791	250 170	3 127.7	2 412.4	5 540.1	3 471.5	2 315.5	5 787.0
Nagoya	"	9 034	11 200	20 234	7 115	7 475	14 590	562.3	245.2	807.5	457.6	216.1	673.6
New York	"	18 822	21 031	39 853	20 292	22 227	42 519	2 600.5	130.8	2 731.3	6 085.5	229.7	6 315.2
Niue	"	0	17	17	0	0	0	0.0	0.0	0.0	0.0	0.0	0.0
Noumea	"	44 916	42 042	86 958	44 714	42 627	87 341	38.1	655.7	693.8	37.2	780.1	817.3
Osaka	"	38 472	93 371	131 843	36 146	84 401	120 547	1 523.4	2 069.9	3 593.3	1 162.9	1 473.6	2 636.4
Palmerston	"	9 344	8 934	18 278	9 347	9 281	18 628	0.0	0.0	0.0	0.0	0.0	0.0
Papeete	"	0	0	0	7 485	8 966	16 451	0.0	0.0	0.0	402.2	220.4	622.6
Phuket	"	40	7 029	7 069	641	6 470	7 111	0.0	0.0	0.0	21.1	3.6	24.8
Port Moresby	"	8 864	10 225	19 089	7 643	8 802	16 445	530.7	266.8	797.5	284.0	295.5	579.5
Port Vila	"	19 920	19 138	39 058	18 199	17 986	36 185	75.8	184.2	260.1	115.4	214.8	330.2
Queenstown	"	7 710	9 572	17 282	14 559	16 232	30 791	0.0	0.0	0.1	0.0	0.0	0.0
San Francisco	"	94 133	97 142	191 275	95 026	96 964	191 990	842.4	2 366.3	3 208.7	615.3	3 381.8	3 997.1
Santiago	"	19 674	20 412	40 086	24 992	24 198	49 190	910.7	435.3	1 346.0	1 479.1	601.7	2 080.8
Sapporo	"	0	0	0	0	0	0	0.0	47.9	47.9	0.0	0.0	0.0
Seattle	"	624	709	1 333	125	154	279	0.0	0.0	0.0	0.0	0.0	0.0
Seoul	"	177 186	177 439	354 625	168 787	171 393	340 180	16 009.0	7 939.7	23 948.7	11 499.9	5 658.5	17 158.4
Shanghai	"	68 791	69 047	137 838	105 487	93 156	198 643	5 018.1	426.5	5 444.7	8 082.7	957.7	9 040.4
Sharjah	"	0	0	0	0	0	0	0.0	51.6	51.6	0.0	268.3	268.3
Singapore	"	498 545	469 756	968 301	481 385	455 388	936 773	26 813.8	14 096.1	40 909.8	24 037.9	10 937.6	34 975.5
Subic Bay	"	0	0	0	0	0	0	0.0	5 409.6	5 409.6	0.0	3 906.3	3 906.3
Suva	"	7 452	11 041	18 493	6 264	8 867	15 131	0.4	19.6	20.1	0.5	17.3	17.7
Taipei	"	56 897	57 233	114 130	66 137	64 510	130 647	1 934.6	1 372.3	3 306.8	2 331.2	1 467.7	3 798.9
Tianjin	"	0	0	0	0	0	0	0.0	0.0	0.0	0.0	0.0	0.0
Tokyo	"	221 860	235 845	457 705	227 775	241 738	469 513	5 267.6	7 232.0	12 499.6	4 954.6	5 547.7	10 502.3
Toledo	"	0	0	0	0	0	0	332.9	0.0	332.9	2 370.1	0.0	2 370.1
Tongatapu	"	2 758	2 368	5 126	2 684	4 091	6 775	21.0	17.1	38.1	6.7	17.5	24.1
Toronto	"	0	0	0	1 082	897	1 979	0.0	0.0	0.0	42.1	2.3	44.4
Vancouver	"	50 533	54 170	104 703	51 697	56 509	108 206	283.1	56.7	339.8	43.7	95.3	139.0
Vienna	"	63 000	63 876	126 876	62 604	65 866	128 470	0.0	0.0	0.0	0.0	0.0	0.0
Wellington	"	148 204	153 097	301 301	130 184	132 283	262 467	509.9	312.3	822.2	472.6	415.9	888.5
<b>Total</b>	<b>Sydney</b>	<b>4 425 862</b>	<b>4 525 963</b>	<b>8 951 825</b>	<b>4 734 192</b>	<b>4 781 791</b>	<b>9 515 983</b>	<b>203 747.2</b>	<b>119 856.4</b>	<b>323 603.6</b>	<b>228 013.1</b>	<b>118 538.6</b>	<b>346 551.7</b>
Almaty	Australia	0	0	0	0	0	0	0.0	0.0	0.0	0.0	15.4	15.4
Amsterdam	"	0	0	0	0	0	0	8 126.7	1 255.5	9 382.2	7 582.1	1 351.1	8 933.1
Anchorage	"	0	0	0	0	0	0	0.0	0.0	0.0	0.0	0.0	0.0
Apia	"	5 867	6 768	12 635	6 394	7 674	14 068	52.7	31.3	84.0	8.7	15.6	24.3
Athens	"	314	0	314	0	0	0	0.0	0.0	0.0	0.0	0.0	0.0
Atlanta	"	0	0	0	0	0	0	385.3	0.0	385.3	0.0	0.0	0.0



**TABLE 5: SCHEDULED INTERNATIONAL TRAFFIC BY CITY PAIRS: Year ended December**

Foreign Port	Australian Port	Passengers						Freight (tonnes)					
		2004			2005			2004			2005		
		Inbound	Outbound	Total	Inbound	Outbound	Total	Inbound	Outbound	Total	Inbound	Outbound	Total
Auckland	Australia	1 387 856	1 417 256	2 805 112	1 464 255	1 486 269	2 950 524	53 389.2	57 985.4	111 374.5	56 417.7	63 784.4	120 202.1
Bahrain	"	49 298	52 000	101 298	53 204	54 081	107 285	1 465.9	1 371.0	2 836.9	1 632.2	2 172.5	3 804.7
Bandar Seri Begawan	"	49 468	52 629	102 097	63 650	61 220	124 870	935.8	1 772.7	2 708.5	1 232.4	2 309.1	3 541.5
Bangkok	"	431 580	400 811	832 391	428 656	403 354	832 010	14 451.3	11 754.6	26 205.9	17 486.8	11 002.7	28 489.5
Beijing	"	33 718	33 038	66 756	37 450	35 186	72 636	261.8	439.3	701.2	106.8	627.9	734.8
Belo Horizonte	"	0	0	0	0	0	0	0.0	0.0	0.0	0.0	78.0	78.0
Bombay	"	13 274	14 269	27 543	36 983	31 865	68 848	254.1	40.3	294.4	965.5	154.5	1 120.0
Buenos Aires	"	16 144	16 072	32 216	17 697	17 731	35 428	95.8	183.1	278.9	222.7	274.9	497.6
Cebu	"	0	0	0	0	0	0	0.0	0.0	0.0	0.0	19.5	19.5
Chicago	"	10 598	9 950	20 548	14 573	15 801	30 374	6 377.8	613.9	6 991.7	12 698.9	24.0	12 722.9
Christchurch	"	520 386	522 235	1 042 621	545 715	539 696	1 085 411	7 281.1	6 898.0	14 179.1	8 454.3	6 512.1	14 966.4
Denpasar	"	337 712	341 924	679 636	312 672	310 599	623 271	5 078.9	3 253.6	8 332.5	4 319.5	3 043.6	7 363.0
Dubai	"	288 545	282 080	570 625	371 031	359 580	730 611	8 689.7	10 122.4	18 812.1	11 351.9	13 641.1	24 993.0
Dunedin	"	44 655	44 600	89 255	48 651	48 184	96 835	0.0	0.0	0.0	0.0	0.0	0.0
Fairbanks	"	0	0	0	0	0	0	0.0	0.0	0.0	0.0	0.0	0.0
Frankfurt	"	39 454	39 023	78 477	39 332	41 730	81 062	3 952.5	1 648.0	5 600.5	5 742.5	558.0	6 300.5
Fukuoka	"	24 859	25 018	49 877	22 956	21 250	44 206	45.3	311.8	357.0	32.8	273.3	306.1
Guam	"	13 405	13 967	27 372	12 918	13 688	26 606	0.7	38.1	38.8	6.2	74.8	81.0
Guangzhou	"	49 718	49 382	99 100	70 139	66 227	136 366	2 313.0	213.9	2 526.9	3 239.6	298.2	3 537.8
Hamilton	"	52 309	52 405	104 714	50 527	50 968	101 495	0.0	0.0	0.0	0.0	0.0	0.0
Hanoi	"	4 175	10 961	15 136	8 264	11 939	20 203	0.0	30.9	30.9	0.0	33.0	33.0
Ho Chi Minh City	"	35 164	63 688	98 852	54 002	64 946	118 948	1 112.0	425.6	1 537.6	2 019.5	351.5	2 371.0
Hong Kong	"	692 294	665 946	1 358 240	846 830	802 373	1 649 203	49 841.6	34 323.2	84 164.8	60 743.1	35 701.1	96 444.2
Honiara	"	12 567	12 970	25 537	12 625	12 101	24 726	159.4	44.9	204.3	80.9	40.4	121.4
Honolulu	"	91 674	85 589	177 263	107 219	98 348	205 567	3 509.1	3 914.8	7 423.9	3 258.1	3 280.1	6 538.2
Jakarta	"	54 709	53 981	108 690	45 939	44 572	90 511	724.9	1 656.9	2 381.7	486.8	956.3	1 443.1
Johannesburg	"	111 702	100 248	211 950	106 529	94 152	200 681	2 759.9	2 906.6	5 666.5	2 364.7	2 803.2	5 167.9
Karachi	"	0	0	0	0	0	0	0.0	0.0	0.0	0.0	0.0	0.0
Kota Kinabalu	"	16 267	16 374	32 641	4 856	4 414	9 270	190.0	186.3	376.3	2.3	84.7	87.0
Kuala Lumpur	"	505 602	493 968	999 570	579 549	574 385	1 153 934	31 405.6	10 196.2	41 601.8	24 688.3	9 883.7	34 572.1
Kuching	"	7 124	7 942	15 066	7 423	10 252	17 675	0.7	124.5	125.2	0.9	113.5	114.4
Kupang	"	619	895	1 514	1 334	1 718	3 052	0.0	0.0	0.0	0.0	0.0	0.0
Lahore	"	0	0	0	0	0	0	0.0	0.0	0.0	0.0	0.0	0.0
London	"	305 131	308 840	613 971	370 478	382 109	752 587	13 186.1	2 479.3	15 665.4	14 124.6	3 748.1	17 872.7
Los Angeles	"	506 381	510 073	1 016 454	550 522	551 013	1 101 535	25 372.5	8 981.6	34 354.1	26 599.1	10 729.1	37 328.3
Louisville	"	0	0	0	0	0	0	4 613.1	0.0	4 613.1	4 813.8	0.0	4 813.8
Luxembourg	"	0	0	0	0	0	0	4 585.0	0.0	4 585.0	4 864.9	0.0	4 864.9
Luzon Island	"	0	0	0	0	0	0	0.0	2.6	2.6	0.0	0.0	0.0
Macau	"	0	0	0	0	0	0	0.0	83.0	83.0	0.0	0.0	0.0
Manchester (US)	"	0	5	5	0	0	0	0.0	0.0	0.0	0.0	0.0	0.0
Manila	"	80 901	78 364	159 265	77 763	71 970	149 733	2 165.1	1 355.1	3 520.2	1 627.0	936.2	2 563.2
Mauritius	"	19 162	18 542	37 704	21 857	21 283	43 140	434.9	619.5	1 054.4	229.2	449.0	678.2
Miami	"	0	0	0	0	0	0	75.5	0.0	75.5	0.0	0.0	0.0
Nadi	"	211 938	212 171	424 109	247 032	246 343	493 375	4 340.4	4 013.1	8 353.5	4 875.3	4 192.9	9 068.1
Nagoya	"	79 135	78 210	157 345	75 748	74 924	150 672	695.5	1 125.8	1 821.3	647.4	602.9	1 250.3
Nauru	"	4 892	4 507	9 399	3 940	3 778	7 718	12.5	203.4	215.9	13.6	200.5	214.1

**TABLE 5: SCHEDULED INTERNATIONAL TRAFFIC BY CITY PAIRS: Year ended December**

Foreign Port	Australian Port	Passengers						Freight (tonnes)					
		2004			2005			2004			2005		
		Inbound	Outbound	Total	Inbound	Outbound	Total	Inbound	Outbound	Total	Inbound	Outbound	Total
New Delhi	Australia	0	0	0	0	0	0	0.0	1.1	1.1	0.0	0.0	0.0
New York	"	20 811	23 299	44 110	22 145	24 721	46 866	2 624.8	130.8	2 755.5	6 515.0	229.7	6 744.6
Niue	"	0	17	17	0	0	0	0.0	0.0	0.0	0.0	0.0	0.0
Noumea	"	62 482	60 857	123 339	63 714	63 599	127 313	68.8	807.2	876.0	51.3	933.4	984.6
Osaka	"	191 810	183 347	375 157	186 116	172 770	358 886	3 201.5	5 219.7	8 421.2	2 438.2	3 920.3	6 358.5
Palmerston	"	40 367	39 436	79 803	40 142	39 252	79 394	0.0	0.0	0.0	0.0	0.0	0.0
Papeete	"	0	0	0	7 485	8 966	16 451	0.0	0.0	0.0	402.2	220.4	622.6
Paris	"	7 932	7 521	15 453	0	0	0	240.8	4.6	245.3	0.0	0.0	0.0
Penang	"	0	0	0	0	0	0	0.0	1.4	1.4	0.0	0.0	0.0
Phuket	"	40	32 765	32 805	641	21 525	22 166	0.0	166.2	166.2	21.1	38.7	59.9
Port Moresby	"	65 578	67 445	133 023	66 054	67 744	133 798	2 241.2	2 912.2	5 153.4	1 464.7	3 659.6	5 124.2
Port Vila	"	34 440	34 198	68 638	38 969	38 876	77 845	100.7	317.2	417.9	154.6	331.0	485.6
Queenstown	"	11 296	13 670	24 966	18 649	20 796	39 445	0.0	0.0	0.1	0.0	0.0	0.0
Rarotonga	"	0	0	0	431	555	986	0.0	0.0	0.0	0.0	0.0	0.0
San Francisco	"	94 133	97 142	191 275	95 026	96 964	191 990	842.4	2 366.3	3 208.7	615.3	3 381.8	3 997.1
Santiago	"	19 674	20 412	40 086	24 992	24 198	49 190	910.7	435.3	1 346.0	1 479.1	601.7	2 080.8
Sapporo	"	3 140	2 900	6 040	7 528	8 008	15 536	0.8	49.2	50.0	15.3	14.4	29.7
Seattle	"	624	709	1 333	125	154	279	0.0	0.0	0.0	0.0	0.0	0.0
Seoul	"	212 189	204 625	416 814	202 740	203 189	405 929	16 825.2	9 531.8	26 357.1	12 209.4	6 905.6	19 115.0
Shanghai	"	96 924	90 170	187 094	142 632	131 156	273 788	5 750.3	695.5	6 445.8	9 573.5	1 962.0	11 535.5
Sharjah	"	0	0	0	0	0	0	1.5	52.5	54.1	0.0	268.3	268.3
Singapore	"	1 677 277	1 614 621	3 291 898	1 773 711	1 699 458	3 473 169	75 231.3	75 156.1	150 387.4	76 010.3	71 196.3	147 206.6
Subic Bay	"	0	0	0	0	0	0	0.0	5 409.6	5 409.6	0.0	3 906.3	3 906.3
Suva	"	7 452	11 041	18 493	6 264	8 867	15 131	0.4	19.6	20.1	0.5	17.3	17.7
Taipei	"	101 855	102 273	204 128	124 010	122 148	246 158	4 116.8	2 286.4	6 403.2	5 633.2	2 493.4	8 126.5
Tianjin	"	0	0	0	0	0	0	0.0	0.0	0.0	0.0	60.2	60.2
Tokyo	"	550 661	549 056	1 099 717	550 477	560 494	1 110 971	11 422.1	16 298.7	27 720.8	11 550.3	12 874.5	24 424.8
Toledo	"	0	0	0	0	0	0	332.9	0.0	332.9	2 370.1	0.0	2 370.1
Tongatapu	"	2 758	2 368	5 126	2 684	4 091	6 775	21.0	17.1	38.1	6.7	17.5	24.1
Toronto	"	0	0	0	1 082	897	1 979	0.0	0.0	0.0	42.1	2.3	44.4
Vancouver	"	50 533	54 170	104 703	51 697	56 509	108 206	283.1	56.7	339.8	43.7	95.3	139.0
Vienna	"	91 071	91 894	182 965	91 232	96 011	187 243	0.0	0.0	0.0	0.0	0.0	0.0
Wellington	"	255 929	262 840	518 769	265 344	267 120	532 464	864.8	529.3	1 394.1	874.7	737.4	1 612.2
<b>Total</b>	<b>Australia</b>	<b>9 707 573</b>	<b>9 663 477</b>	<b>19 371 050</b>	<b>10 502 603</b>	<b>10 373 791</b>	<b>20 876 394</b>	<b>383 422.8</b>	<b>293 070.4</b>	<b>676 493.2</b>	<b>414 411.3</b>	<b>294 204.4</b>	<b>708 615.7</b>

Please refer to explanatory notes - paragraphs 3, 8 and 13 in particular.

**TABLE 6 : INTERNATIONAL AIRLINES OWN STOPOVER REVENUE PASSENGERS,  
AUSTRALIAN CITY PAIRS: Year ended December 2005**

City Pair Route	Total Passengers
Melbourne/Sydney	43 938
Brisbane/Sydney	37 187
Brisbane/Cairns	1 609
Adelaide/Melbourne	136
<b>TOTAL</b>	<b>82 870</b>

Notes:

1. Own Stopover Revenue Passengers : The aggregate of revenue passengers uplifted at one Australian airport and discharged (excluding transit passengers) at another Australian airport by the same foreign registered international airline on which they entered or left Australia.
2. City Pair Route represents the aggregation of passengers travelling in both directions.
3. This data is additional to the information presented in tables 1-5 which cover only those passengers travelling to/from overseas airports.

**TABLE 7: TOTAL AIRCRAFT MOVEMENTS AT AUSTRALIAN INTERNATIONAL AIRPORTS BY AIRCRAFT TYPES: Year ended December 2005**

Airport	Aircraft Types																		
	Passenger/Mixed														Freighters				All Types
	AB3	310	32S	330	340	737	747	767	777	M11	DH8	100	EM2	Metro	72F	74F	76F	M1F	
Adelaide		146		816		318	2	16	854							187			2 339
Brisbane	4	170	2 266	3 040	310	6 188	4 310	1 720	4 553	8		21			7				22 597
Cairns			136	416		311	76	6 025			41	907		328					8 240
Darwin			324	621		409	12	459					210						2 035
Gold Coast/Coolangatta			231			1 645		726											2 602
Melbourne	334	68	3 022	3 296	2 057	2 657	6 172	2 813	4 884	422					970			61	26 756
Norfolk Island						207						0							207
Perth		322	501	2 280	1 255	1 663	814	1 523	2 358							58			10 774
Sydney	336	72	5 763	3 885	5 727	4 478	19 950	10 607	4 899						488	1 855	37	606	58 703
<b>Australia</b>	<b>674</b>	<b>778</b>	<b>12 243</b>	<b>14 354</b>	<b>9 349</b>	<b>17 876</b>	<b>31 336</b>	<b>23 889</b>	<b>17 548</b>	<b>430</b>	<b>41</b>	<b>928</b>	<b>210</b>	<b>328</b>	<b>488</b>	<b>3 077</b>	<b>37</b>	<b>667</b>	<b>134 253</b>

% of All Types      0.5   0.6   9.1   10.7   7.0   13.3   23.3   17.8   13.1   0.3   0.0   0.7   0.2   0.2   0.4   2.3   0.0   0.5   100.0

Share of passenger aircraft movements:

Airbus                      28.8%  
 Boeing                      69.7%  
 Other                        1.5%

NOTE:

These figures only cover scheduled operations by the airlines listed in this publication. Charter/ferry operations are not included. These figures are available electronically for January 2001 onwards. Prior to this, aircraft type data is not readily accessible.

Aircraft Types (all series)

Airbus                      AB3   310   32S   330   340  
 Boeing                      737   747   757   767   777   72F   74F   76F  
 McDonnell Douglas      M11   M1F   D1F  
 Fokker                      100  
 BAE                        146  
 Metro                      Metro  
 Embraer                    EM2