



Australian Government
Department of Transport and Regional Services
Bureau of Transport and Regional Economics

BUREAU OF TRANSPORT AND REGIONAL ECONOMICS

international scheduled air transport 2004

AVIATION STATISTICS

IAA 119

© Commonwealth of Australia

Canberra

June 2005

ISSN 1324-5074

This work is copyright and the data contained in this publication should not be reproduced or used in any form without acknowledgement.

Inquiries

Should you require additional information about the statistics contained in this publication, please contact Mrs Betty Kell in Canberra by telephone (02) 6274 7791 or by facsimile (02) 6274 7727 or write to:

Statistics, Bureau of Transport and Regional Economics
Department of Transport and Regional Services
GPO Box 594
Canberra ACT 2601

Electronic mail: AVSTATS@dotars.gov.au

Web site: www.btre.gov.au/statistics/statsindex.aspx

CONTENTS

Explanatory Notes iv-vi

Data Issues and Airlines Commencing/Withdrawing Services..... vii

Highlights viii-xii

Detailed Tables

- 1. Scheduled International Air Traffic to and from Australia 1-3
- 2. Scheduled Operator Market Shares and Growth..... 4-7
- 3. Airline Passenger Capacity and Utilisation to and from Australia by Operator 8-10
- 4. Australian International Airport Scheduled Traffic and Aircraft Movements11
- 5. Scheduled International Passengers and Freight by City Pairs 12-18
- 6. International Airlines Own Stopover Revenue Passengers, Australian City Pairs19
- 7. Total Aircraft Movements at Australian International Airports by Aircraft Types20

EXPLANATORY NOTES

INTRODUCTION

1. This publication continues the series of publications on a calendar year basis presenting statistical information on the scheduled operations of international airlines operating into/out of Australia.
2. The figures in this publication were obtained from reports submitted by scheduled international carriers and are the best available at the time of publication.

COVERAGE

3. These statistics show uplift/discharge data – These data detail, by direction, the revenue traffic between the actual points of uplift and discharge within each flight, aggregated for all flights within the period. It shows the movement of traffic between two airports not necessarily directly connected but within the same flight number. Typically, flight numbers change when an aircraft reaches its home country. This means that uplift/discharge data for the port in the operator's home country are likely to be overstated by traffic whose origin/destination point is beyond that port. For example, uplift/discharge traffic reported in this publication as Singapore could include traffic whose origin/destination is Europe.
4. These statistics cover revenue traffic carried by the operators of scheduled regular public international air transport services only and do not include charter traffic.
5. Some airlines (generally, dedicated freighter operators) operate scheduled services into Australia but operate non-scheduled services out of Australia and therefore outbound activity is not recorded in this data collection.

PRODUCTION AND INTERPRETATION

6. Tables 1 and 2 show the country of the relevant uplift or discharge port served by that airline. For example, traffic uplifted/discharged between Sydney and Singapore by British Airways would be shown as Singapore traffic in Tables 1 and 2.
7. Table 3 shows figures for the country of service (or route) for each airline and therefore may not equate to the data in Tables 1 and 2. For example, the British Airways UK service identified in Table 3 could include passengers uplifted or discharged in Singapore or Thailand as well as the UK; these passengers would be shown individually under those countries in Tables 1 and 2. The difference in treatment of data between Tables 1 and 2 and Table 3 is necessary in order to work out a meaningful Seat Utilisation figure for Table 3.

Figures shown in Table 3 may include total traffic into and out of Australia for airlines that fly through Australia (also necessary in order to work out a meaningful Seat Utilisation figure). Therefore, figures in Table 3 may not equate to figures in Tables 1 and 2. For example, passengers carried by Qantas Airways from New Zealand via Australia to the UK will be included in Table 3 but will not be included in Tables 1 or 2 as these passengers were not uplifted/discharged in Australia.

8. Table 5 – shows uplift/discharge passenger and freight data for city pairs with same flight number international flight connections.
9. Where figures have been rounded, discrepancies may occur between sums of component items and totals, and in percentage changes which are derived from figures prior to rounding.
10. Published figures may be revised where figures missing at the time of publication are received or misreporting/miscalculation necessitates revisions.

DEFINITIONS

11. The following definitions have been used in this publication:
- (a) Aircraft Movement: A landing or a take off.
 - (b) Freight: The aggregate of all revenue freight uplifted.
 - (c) Inbound: Inbound to Australia/Australian international airport.
 - (d) Mail: The aggregate of all mail uplifted.
 - (e) Outbound: Outbound from Australia/Australian international airport.
 - (f) Revenue Passengers: please refer to paragraph 12.
 - (g) Seat Utilisation: The ratio of passengers carried to seats available, expressed as a percentage.
 - (h) Seats Available: Generally based on standard aircraft configuration, the aggregate of seats available on all flights operated over a particular service.
 - (i) Services: Scheduled flights over authorised routes which are listed according to the main ports involved.

COMPARABILITY OF DATA OVER TIME

12. Revenue Passengers:
- For July 2000 and onwards: All passengers paying any fare (frequent flyer redemption passengers are regarded as revenue passengers). In most cases, Revenue Passengers will now include all passengers excluding Free Of Charge passengers and positioning crew.
 - To December 1999: The aggregate of all passengers paying 25% or more of the standard air fare (as defined by ICAO).
 - January 2000 to June 2000: Transition period.

The Revenue Passenger definition change could result in approximately a three per cent increase in passenger numbers over a full period (month or year).

13. Country and City data – reporting of Uplift/Discharge data by Qantas Airways:
- Prior to January 2003: Uplift/Discharge within Qantas Airways' international network.
 - For January 2003 and onwards: Uplift/Discharge within flight number – as per the standard definition.

For example, what was previously reported as Adelaide to London (no direct services between these two cities) will now be reported as either Adelaide to Singapore or Melbourne/Sydney to London.

This change has been introduced in order to make the data comparable across all airlines operating services to/from Australia.

The effect of this change – comparing data under the two methods of reporting:

- Country of Port data (Tables 1 & 2) – There will be a shift in traffic to countries such as Singapore which are used as hubs and away from countries such as France, Germany and Italy which previously received traffic channelled through hubs. The total volume of traffic is not affected.
- Country of Service data (Table 3) – no change, as the Uplift/Discharge definition is not applicable to classifying the country of service.
- Australian International Airports (Table 4) – there may be a shift of traffic to the major airports.
- City Pairs (Table 5) – There will be a shift in traffic to cities such as Singapore which are used as hubs and away from cities such as Paris, Frankfurt and Rome which previously received traffic channelled through hubs. The total volume of traffic is not affected. Prior to the change, statistics reported for city pairs without “same flight number” international flight connections mainly reflected carriage on interconnecting international services by Qantas Airways. That traffic should have been interpreted as increasing the volume of traffic between the primary international ports rather than as an indicator of traffic volumes between ports without “same flight number” international flight connections. It should be noted however, that there was no double counting of traffic.

14. Country of Service classification by Qantas Airways:

- For July 2002 and onwards: based on the foreign country where same flight number services commence or cease – as per the standard definition. For example, Sydney-Denpasar-Singapore services would be classified as Country of Service = Singapore.
- Prior to July 2002: based on Qantas classification – this mainly affected Indonesia and Singapore Countries of Service. For example, Sydney-Denpasar-Singapore services were classified as Country of Service = Indonesia.

15. Airline data – Reporting of code share services:

Reporting of traffic split by airline code for code share arrangements was discontinued as of June 2000. For July 2000 and onwards, ALL traffic carried is reported under the operating airline regardless of code share arrangements.

Monthly airline market share figures for July 2001 onwards will be comparable with the same month in the previous year. However, these figures may not be comparable with monthly data prior to July 2000.

SYMBOLS AND OTHER USAGE

- nil or zero
- .. not applicable

INDEMNITY STATEMENT

The Bureau of Transport and Regional Economics has taken due care in preparing the information contained in this publication. However, noting that data have been provided by third parties, the Commonwealth gives no warranty as to the accuracy, reliability, fitness for purpose, or otherwise of the information.

DATA ISSUES

Air Paradise International	Data for July to December 2004 for operations to/from Melbourne may contain errors.
Lauda Air	No outbound freight data for September 2000 onwards. No inbound freight data for April 2001 onwards.
Merpati Nusantara Airlines	Jakarta/Christmas Island scheduled services commenced in August 2001 and ceased in February 2004 – no data has been received for these services.
Norfolk Jet Express	Service commenced August 2004 and ceased December 2004. No data has been received.
Polar Air Cargo	No data received for March 2003 and onwards.
Royal Tongan Airlines	Operated services recommenced in December 2002 and ceased in April 2004. No data received for July 2003 and onwards.
Vietnam Airlines	No data received for inbound operations to Sydney for August 2002 to May 2004 and for July 2004 to November 2004 and January 2005. Data for Outbound operations have been received for July 2003 onwards.

AIRLINES COMMENCING/WITHDRAWING SERVICES DURING 2004

The following airlines commenced operated services to/from Australia

- Hawaiian Airlines (recommenced)
- Norfolk Jet Express
- Pacific Blue
- Valuair
- Virgin Atlantic Airways

The following airlines ceased operated services to/from Australia

- Norfolk Jet Express
- Royal Tongan Airlines

HIGHLIGHTS – YEAR ENDED DECEMBER 2004

- Fifty-three international scheduled airlines operated services to/from Australia during the year (includes seven dedicated freight airlines but excludes airlines operating only via code share arrangements).
- International scheduled passenger traffic in 2004 was 19.371 million compared to 16.451 million in 2003 – an increase of 17.8%.
- Chart I shows total passenger traffic for the years 1994 to 2004. Over this period, 2002 and 2003 were the only years that recorded a decrease in traffic compared to the previous year.
- Passenger traffic in 2002 was affected by the terrorist attacks on the USA in September 2001 and the collapse of Ansett International (also in September 2001). Passenger traffic in 2003 was affected by the SARS crisis (April, May and June 2003 in particular) and the war in Iraq.
- Following the two years of negative growth, 2004 recorded the highest level of passenger traffic ever carried in a calendar year. Chart II compares monthly passenger traffic for 2004 with monthly passenger traffic for 2003. It can be seen that traffic in each month in 2004 is well above what was recorded in 2003. More importantly, each month since September 2003 has recorded the highest level of passenger traffic when compared to the same month in any previous year.
- Chart III shows the airline market shares in terms of passenger carriage for the top ten airlines for 1994, 1999 and 2004. In the latest year Qantas Airways had the largest share of the market with 29.8% followed by Singapore Airlines with 10.5%, Air New Zealand with 8.3%, Malaysia Airlines with 5.1% and Emirates with 4.7%.
- Compared to 1994, Qantas Airways' share has decreased by 10.9%, Singapore Airlines' share has increased by 4.1%, Air New Zealand's share has decreased by 2.4%, Malaysia Airlines' share has increased by 1.7% and Emirates did not operate to Australia in 1994. Note that the decrease in share for the Qantas group (Qantas and Australian Airlines in 2004 compared to Qantas and Australia Asia Airlines in 1994) was 8.6%. The Air New Zealand group's (Air New Zealand and Freedom Air in 2004) share has increased by 0.2%.
- The share of passenger traffic accounted for by Australian airlines has decreased from 42.7% in 1994 (Qantas Airways, Ansett International and Australia Asia Airlines) to 38.7% in 1999 (Qantas Airways, Ansett International and Flight West Airlines) and to 33.1% in 2004 (Qantas Airways, Australian Airlines and Pacific Blue's operations to Fiji and Vanuatu).
- Table V shows the uplift/discharge passenger traffic on the Trans-Tasman by airline for 1994, 1999 and 2004. This market accounted for nearly a quarter of all passenger traffic to/from Australia in 2004 (24.1%) – compared to 20.0% in 1994 and 19.0% in 1999.
- Air New Zealand and Freedom Air had 45.5% of this market in 2004 which is down from 49.9% in 1994 and 50.9% in 1999. Qantas Airways had 38.3% in 2004 down from 39.6% in 1994 and 41.3% in 1999. Pacific Blue and Emirates each had 6.0% of this market in 2004.

- International scheduled freight traffic in 2004 increased by 10.7% over 2003 to 676,493 tonnes. Inbound freight traffic has increased by 22.3% while outbound freight traffic has decreased by 1.5%.
- In 2004, dedicated freighter operations accounted for 26.5% of inbound freight to Australia, 13.7% of outbound freight from Australia and 21.0% of total freight. Note that some freighters do not pick up freight in Australia – this accounts for the difference in inbound and outbound percentages. Polar Air has not reported.

Summary Statistics

	Year ended December 2002	Year ended December 2003	Year ended December 2004	Growth compared to	
				2003	2002
Passengers carried	16 682 373	16 450 731	19 371 050	17.8	16.1
Freight (tonnes)	645 926	611 210	676 493	10.7	4.7
Mail (tonnes)	28 770	28 023	28 698	2.4	-0.2
Available Seats	22 758 915	23 760 567	28 109 387	18.3	23.5
Flights	87 421	92 214	109 329	18.6	25.1
Aircraft Movements	105 285	108 564	127 966	17.9	21.5

YEAR ENDED DECEMBER 2004

Chart I: Total International Passengers Carried (millions) - Years ended December 1994 to 2004

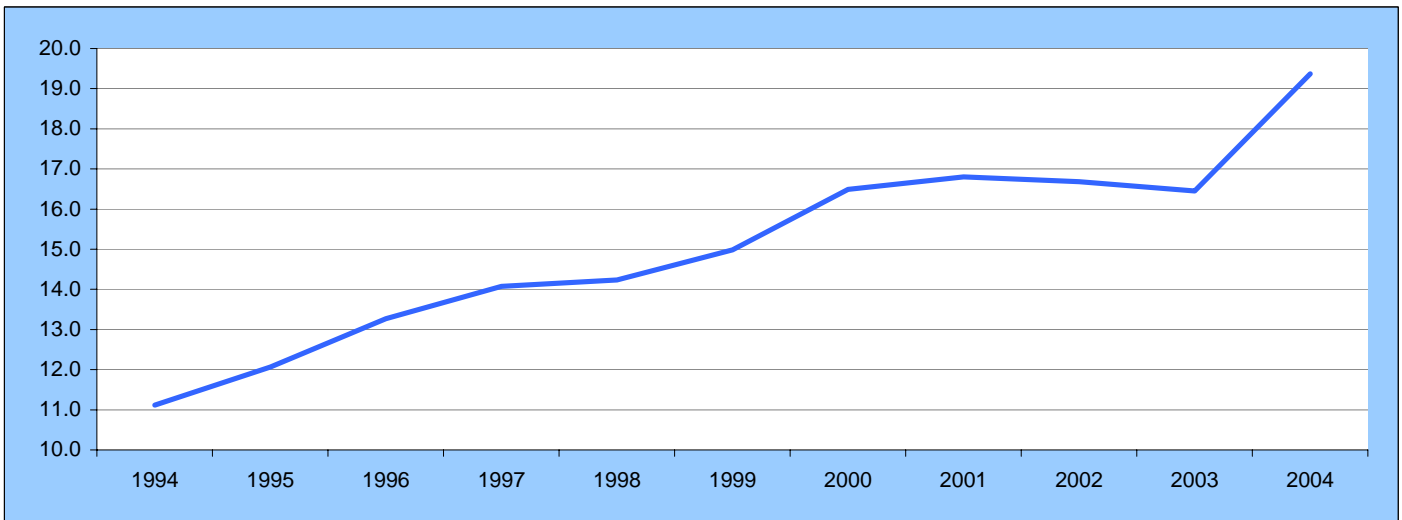


Chart II: Total International Passengers Carried (millions) - By Month

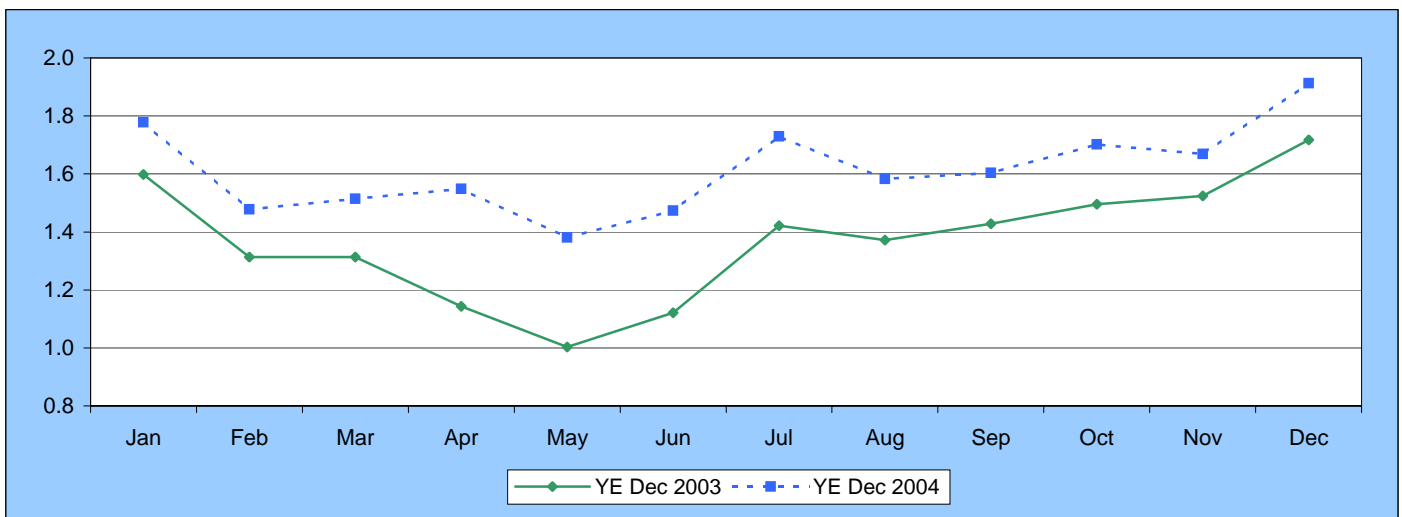


Table I: International Passengers by Uplift/Discharge City Pairs (a)

Foreign Port	Australian Port	Year ended December 2002	Year ended December 2003	Year ended December 2004	% of Total	% Change 2004/03
Auckland	Sydney	973 117	1 137 536	1 257 738	6.5	10.6
Singapore	Sydney	947 649	917 367	968 301	5.0	5.6
Singapore	Melbourne	661 916	625 305	727 435	3.8	16.3
Singapore	Perth	683 785	665 063	713 170	3.7	7.2
Auckland	Brisbane	443 267	530 866	708 828	3.7	33.5
Singapore	Brisbane	450 870	552 094	627 864	3.2	13.7
Auckland	Melbourne	503 070	536 031	627 731	3.2	17.1
Los Angeles	Sydney	667 350	612 352	622 382	3.2	1.6
Hong Kong	Sydney	587 989	504 054	604 986	3.1	20.0
Christchurch	Sydney	391 024	444 022	513 781	2.7	15.7
Top 10 City Pairs		6 310 037	6 524 690	7 372 216	38.1	13.0
Other City Pairs		10 372 336	9 926 041	11 998 834	61.9	20.9
ALL CITY PAIRS		16 682 373	16 450 731	19 371 050	100.0	17.8

Table II: International Freight (tonnes) by Uplift/Discharge City Pairs (a)

Foreign Port	Australian Port	Year ended December 2002	Year ended December 2003	Year ended December 2004	% of Total	% Change 2004/03
Auckland	Sydney	47 930	51 466	57 141	8.4	11.0
Singapore	Melbourne	51 012	51 210	49 052	7.3	-4.2
Singapore	Sydney	48 540	43 279	40 910	6.0	-5.5
Auckland	Melbourne	32 961	32 668	34 468	5.1	5.5
Hong Kong	Sydney	30 170	29 970	34 147	5.0	13.9
Hong Kong	Melbourne	23 929	23 817	32 173	4.8	35.1
Singapore	Perth	25 436	26 129	30 133	4.5	15.3
Los Angeles	Sydney	27 753	22 218	25 452	3.8	14.6
Seoul	Sydney	17 444	15 410	23 949	3.5	55.4
Singapore	Brisbane	18 734	18 633	19 732	2.9	5.9
Top 10 City Pairs		323 909	314 799	347 157	51.3	10.3
Other City Pairs		322 017	296 411	329 336	48.7	11.1
ALL CITY PAIRS		645 926	611 210	676 493	100.0	10.7

Table III: International Passengers by Uplift/Discharge Country (a)

Country	Year ended December 2002	Year ended December 2003	Year ended December 2004	% of Total	% Change 2004/03
New Zealand	3 552 488	3 870 190	4 665 240	24.1	20.5
Singapore	2 910 771	2 953 619	3 291 898	17.0	11.5
Japan	1 646 635	1 544 807	1 688 136	8.7	9.3
USA	1 360 925	1 306 782	1 450 988	7.5	11.0
Hong Kong	1 187 924	1 006 528	1 358 240	7.0	34.9
Malaysia	904 107	908 852	1 047 277	5.4	15.2
Thailand	817 576	775 709	865 196	4.5	11.5
Indonesia	651 358	516 913	789 840	4.1	52.8
UK	616 716	585 587	613 971	3.2	4.8
United Arab Emirates	280 179	429 335	570 625	2.9	32.9
Top 10 Countries	13 928 679	13 898 322	16 341 411	84.4	17.6
Other Countries	2 753 694	2 552 409	3 029 639	15.6	18.7
ALL COUNTRIES	16 682 373	16 450 731	19 371 050	100.0	17.8

Table IV: International Passenger Traffic through Australian International Airports (a)

Airport	Year ended December 2002	Year ended December 2003	Year ended December 2004	% of Total	% Change 2004/03
Sydney	8 006 775	7 929 841	8 951 825	46.2	12.9
Melbourne	3 313 751	3 199 534	3 936 435	20.3	23.0
Brisbane	2 493 082	2 549 444	3 266 481	16.9	28.1
Perth	1 636 422	1 586 622	1 827 389	9.4	15.2
Cairns	766 256	746 561	846 846	4.4	13.4
Adelaide	224 351	206 849	286 083	1.5	38.3
Gold Coast/Coolangatta	113 127	138 938	136 408	0.7	-1.8
Darwin	103 211	77 690	98 374	0.5	26.6
Norfolk Island	15 891	15 252	19 213	0.1	26.0
Canberra (b)	1 996	0.0	..
Newcastle (c)	9 507
ALL AIRPORTS	16 682 373	16 450 731	19 371 050	100.0	17.8

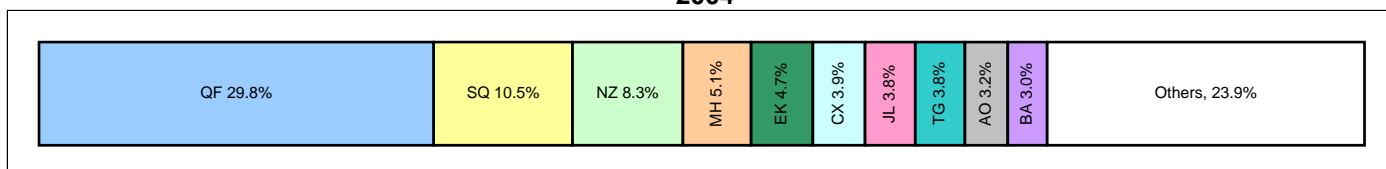
(a) Please refer to Explanatory notes - paragraphs 3 & 13 in particular.

(b) International operations commenced July 2004 and ceased September 2004.

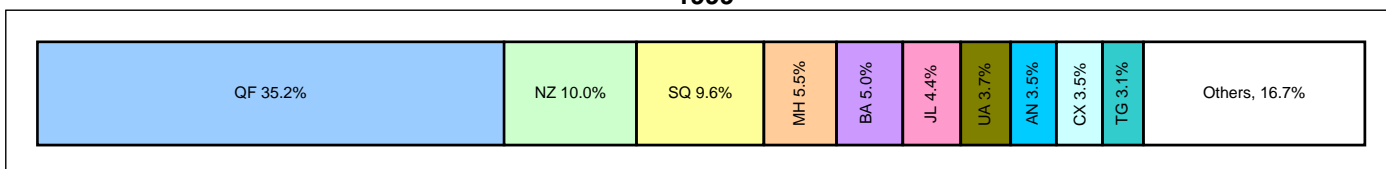
(c) International operations commenced December 2001 and ceased September 2002.

Chart III: International Passengers by Major Airlines - Top 10 in each year - Years ended December

2004



1999



1994

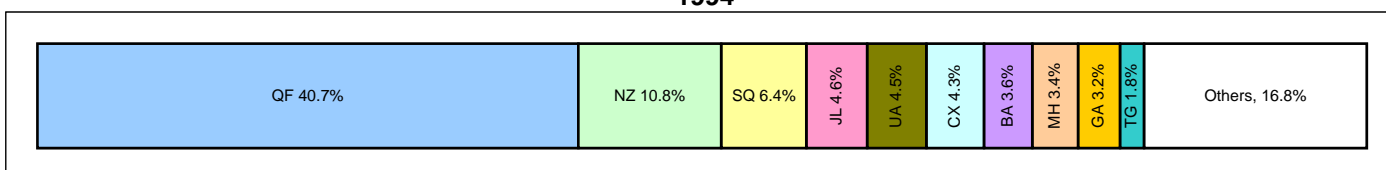


Table V: Uplift/Discharge Passenger Traffic on the Trans-Tasman by Airline - Years ended December

	1994	% of Total	1999	% of Total	2004	% of Total
Qantas Airways	878 009	39.6%	1 174 275	41.3%	1 784 583	38.3%
Air New Zealand	1 107 706	49.9%	1 300 651	45.7%	1 614 563	34.6%
Freedom Air Int.			147 401	5.2%	508 340	10.9%
Pacific Blue					280 631	6.0%
Emirates					280 249	6.0%
Thai Airways Int.	28 488	1.3%	61 876	2.2%	108 876	2.3%
Royal Brunei Al.					39 830	0.9%
Lan Chile			36	0.0%	24 306	0.5%
Garuda Indonesia			38 126	1.3%	10 892	0.2%
Aerolineas	2 812	0.1%	11 793	0.4%	7 149	0.2%
Malaysia Airlines	33 138	1.5%			4 151	0.1%
Polynesian Airlines	16 527	0.7%	14 786	0.5%	1 670	0.0%
Norfolk Jet Express					n/a	
Royal Tongan Al.			n/a		n/a	
Eva Air			5 136	0.2%		
United Airlines	117 460	5.3%	91 034	3.2%		
British Airways	33 994	1.5%				
Total	2 218 134	100.0%	2 845 114	100.0%	4 665 240	100.0%

STATISTICAL TABLES

2004

TABLE 1: SCHEDULED INTERNATIONAL AIR TRAFFIC TO AND FROM AUSTRALIA: Year ended December 2004

Scheduled Operator	Country to/from	Inbound			Outbound		
		Passengers	Freight (tonnes)	Mail (tonnes)	Passengers	Freight (tonnes)	Mail (tonnes)
Aerolineas Argentinas	Argentina	16 144	95.8	4.7	16 072	183.1	-
"	New Zealand	3 573	534.6	-	3 576	595.0	-
"	ALL SERVICES	19 717	630.4	4.7	19 648	778.2	-
Air Caledonie	New Caledonia	40 155	56.6	6.1	39 330	599.4	14.3
Air Canada	Canada	50 533	283.1	29.3	54 170	56.7	0.0
"	USA	19 186	2 537.1	245.3	15 270	3 141.4	2.6
"	ALL SERVICES	69 719	2 820.2	274.5	69 440	3 198.2	2.6
Air China	China	73 601	891.8	40.8	70 368	603.1	-
Air Mauritius	Mauritius	19 162	434.9	2.7	18 542	619.5	0.0
Air Nauru	Nauru	4 892	12.5	2.6	4 507	203.4	2.0
"	Solomon Islands	2 593	0.4	-	2 088	0.4	-
"	ALL SERVICES	7 485	12.9	2.6	6 595	203.8	2.0
Air New Zealand	New Zealand	804 769	13 630.2	1 929.4	809 794	12 822.2	100.7
Air Niugini	Papua New Guinea	65 578	2 241.2	28.5	67 445	2 912.2	253.9
Air Pacific	Fiji	208 465	4 340.8	18.5	210 180	4 032.7	185.0
Air Paradise International (a)	Indonesia	101 383	738.3	0.0	102 189	254.0	-
Air Vanuatu	Vanuatu	31 502	100.7	31.9	30 846	317.2	50.5
Asian Express Airlines	New Zealand	..	3 263.4	-	..	3 702.7	-
Asiana Airlines	Korea	73 986	3 088.7	150.5	72 288	1 330.2	-
Australian Airlines	Hong Kong	29 286	860.9	-	23 098	1 642.8	-
"	Indonesia	51 052	366.4	-	51 931	76.5	0.5
"	Japan	174 904	1 497.4	47.4	171 498	3 129.2	-
"	Malaysia	16 267	190.0	-	16 374	186.3	-
"	Singapore	43 640	1 608.0	1.9	45 927	535.4	30.1
"	ALL SERVICES	315 149	4 522.7	49.3	308 828	5 570.2	30.6
British Airways	Singapore	81 427	2 174.5	0.2	76 078	3 627.3	-
"	Thailand	68 884	1 528.4	-	73 053	860.5	-
"	UK	144 506	6 826.8	24.4	132 777	1 338.5	11.4
"	ALL SERVICES	294 817	10 529.7	24.6	281 908	5 826.4	11.4
Cargolux Airlines Intl	Luxembourg	..	4 585.0	-
"	Malaysia	..	58.1	-
"	New Zealand	5 171.1	-
"	ALL SERVICES	-	4 643.1	-	-	5 171.1	-
Cathay Pacific Airways	Hong Kong	390 427	32 928.3	475.3	374 505	24 532.8	305.8
China Airlines	Taiwan	60 809	2 218.5	140.9	61 358	698.9	0.3
China Eastern Airlines	China	65 368	4 024.9	5.8	60 954	401.7	5.9
China Southern Airlines	China	38 659	2 074.8	39.6	38 014	169.4	-
Continental Micronesia	Guam	13 405	0.7	1.0	13 967	38.1	-
Emirates	New Zealand	139 482	12 940.4	0.1	140 767	11 367.5	1.8
"	Singapore	27 971	2 223.3	63.1	23 203	3 300.4	3.2
"	United Arab Emirates	288 545	8 689.7	218.5	282 080	10 122.4	8.8
"	ALL SERVICES	455 998	23 853.5	281.7	446 050	24 790.3	13.8
Eva Air	Taiwan	41 046	1 898.3	47.3	40 915	1 430.1	-
Federal Express Corporation	Philippines	5 409.6	-
"	USA	..	13 582.2	22.7
"	ALL SERVICES	-	13 582.2	22.7	-	5 409.6	-
Freedom Air International	New Zealand	254 355	-	-	253 985	-	-
Garuda Indonesia	Indonesia	166 162	4 013.0	17.8	167 550	2 920.1	0.3
"	New Zealand	5 514	1 025.8	-	5 378	189.2	-
"	ALL SERVICES	171 676	5 038.8	17.8	172 928	3 109.3	0.3
Gulf Air	Bahrain	49 298	1 465.9	80.8	52 000	1 356.0	68.3
"	Singapore	11 007	1 774.9	27.9	11 976	1 161.6	0.4
"	ALL SERVICES	60 305	3 240.8	108.8	63 976	2 517.6	68.7
Hawaiian Airlines (b)	USA	21 571	140.9	4.0	24 384	213.4	0.0
Japan Airlines	Japan	367 443	7 923.9	1 107.7	366 312	10 621.8	67.6
Korean Air	Korea	138 203	13 736.6	549.0	132 337	8 201.7	14.4
Lan Chile	Chile	19 674	910.7	0.4	20 412	435.3	36.3
"	New Zealand	10 780	266.0	4.0	13 526	182.8	1.4
"	ALL SERVICES	30 454	1 176.7	4.5	33 938	618.1	37.7
Lauda Air (c)	Austria	91 071	-	-	91 894	-	-
"	Malaysia	12 024	-	-	11 005	-	-
"	Singapore	2 741	-	-	3 881	-	-
"	ALL SERVICES	105 836	-	-	106 780	-	-
Lufthansa German Airlines	Germany	..	1 781.6	0.0	..	1 460.5	-
"	India	1.1	-
"	Malaysia	..	10.4	-	..	102.6	-
"	New Zealand	..	2 708.1	1.5	..	45.9	-
"	Pakistan	-	-

TABLE 1: SCHEDULED INTERNATIONAL AIR TRAFFIC TO AND FROM AUSTRALIA: Year ended December 2004

Scheduled Operator	Country to/from	Inbound			Outbound		
		Passengers	Freight (tonnes)	Mail (tonnes)	Passengers	Freight (tonnes)	Mail (tonnes)
Lufthansa German Airlines	Thailand	52.7	-
"	United Arab Emirates	..	1.5	-	..	1.0	-
"	USA	..	5 561.5	-	..	852.8	-
"	ALL SERVICES	-	10 063.1	1.5	-	2 516.6	-
Malaysia Airlines	Malaysia	500 702	31 337.8	56.7	490 905	10 219.5	-
"	New Zealand	2 324	43.7	-	1 827	10.7	-
"	ALL SERVICES	503 026	31 381.5	56.7	492 732	10 230.2	-
Martinair Holland	Bahrain	15.0	-
"	Hong Kong	572.6	-
"	Japan	143.0	-
"	Macau	83.0	-
"	Netherlands	..	8 126.7	-	..	1 255.5	-
"	New Zealand	32.1	-
"	Thailand	209.6	-
"	United Arab Emirates	51.6	-
"	ALL SERVICES	-	8 126.7	-	-	2 362.2	-
Merpati Nusantara Airlines (d) (e)	Indonesia	619	-	-	895	-	-
Norfolk Jet Express (f)	New Zealand	..	-	-	..	-	-
Pacific Blue (g)	Fiji	10 925	-	-	13 032	-	-
"	New Zealand	137 326	-	-	143 305	-	-
"	Vanuatu	2 938	-	-	3 352	-	-
"	ALL SERVICES	151 189	-	-	159 689	-	-
Philippine Airlines	Philippines	35 554	1 144.3	-	34 189	804.1	-
Polar Air Cargo (h)	USA	..	-	-
Polynesian Airlines	New Zealand	838	0.7	1.5	832	7.6	6.5
"	Niue	17	-	-
"	Tonga	2 758	21.0	0.2	2 368	17.1	6.8
"	Western Samoa	5 867	52.7	0.4	6 768	31.3	5.9
"	ALL SERVICES	9 463	74.4	2.1	9 985	55.9	19.2
Qantas Airways	China	2 732	1 333.6	-	3 254	174.6	0.8
"	Fiji	..	-	-	..	0.0	-
"	France	7 932	240.8	0.3	7 521	4.6	7.7
"	Germany	39 454	2 170.9	60.8	39 023	187.4	490.2
"	Greece	314	-	-
"	Hong Kong	271 031	15 779.9	217.0	266 887	7 268.0	809.5
"	India	13 274	254.1	-	14 269	40.3	14.4
"	Indonesia	73 824	732.5	0.7	74 235	1 575.5	62.3
"	Japan	307 258	5 943.9	850.9	300 721	9 111.2	1 564.1
"	New Caledonia	22 327	12.2	3.6	21 527	207.8	25.0
"	New Zealand	874 853	23 749.0	73.2	909 730	23 018.3	2 097.9
"	Philippines	45 347	1 020.8	32.7	44 175	551.0	32.7
"	Singapore	485 240	14 412.3	1 132.7	443 309	20 403.1	2 068.5
"	South Africa	61 043	1 457.9	43.2	55 561	575.5	116.8
"	Thailand	55 993	876.8	100.0	49 409	571.1	237.8
"	UK	158 590	6 359.3	1 451.9	175 748	1 140.8	2 279.7
"	USA	469 198	16 370.7	1 754.0	471 326	6 391.9	2 207.9
"	ALL SERVICES	2 888 410	90 714.6	5 721.0	2 876 695	71 221.1	12 015.3
Royal Brunei Airlines	Brunei	49 468	935.8	0.2	52 629	1 772.7	-
"	New Zealand	20 533	316.1	-	19 297	768.5	-
"	ALL SERVICES	70 001	1 251.9	0.2	71 926	2 541.2	-
Royal Tongan Airlines (i)	New Zealand	..	-	-
"	Tonga	..	-	-
"	ALL SERVICES	-	-	-	-	-	-
Singapore Airlines	Indonesia	84.3	-
"	New Zealand	..	39.1	-	..	3 677.2	-
"	Singapore	1 022 342	52 991.7	1 537.7	1 006 495	46 128.2	37.8
"	ALL SERVICES	1 022 342	53 030.8	1 537.7	1 006 495	49 889.7	37.8
Solomon Airlines	Solomon Islands	9 974	159.0	-	10 882	44.5	-
South African Airways	South Africa	50 659	1 302.0	30.0	44 687	2 331.1	21.6
Thai Airways International	New Zealand	58 451	3 018.1	0.1	50 425	3 821.8	0.1
"	Thailand	306 743	12 046.1	1 212.0	311 114	10 226.9	2.9
"	ALL SERVICES	365 194	15 064.3	1 212.2	361 539	14 048.7	2.9
United Airlines	USA	214 266	1 327.9	1 401.9	215 787	5 407.7	102.0
United Parcel Service	Hong Kong	200.1	-
"	Philippines	2.6	-
"	Taiwan	157.4	-
"	USA	..	4 613.1	-
"	ALL SERVICES	-	4 613.1	-	-	360.1	-

TABLE 1: SCHEDULED INTERNATIONAL AIR TRAFFIC TO AND FROM AUSTRALIA: Year ended December 2004

Scheduled Operator	Country to/from	Inbound			Outbound		
		Passengers	Freight (tonnes)	Mail (tonnes)	Passengers	Freight (tonnes)	Mail (tonnes)
Valuair (j)	Singapore	2 909	0.1	-	3 752	0.2	-
Vietnam Airlines (k)	Vietnam	39 339	1 112.0	-	74 649	456.5	-
Virgin Atlantic Airways (j) (l)	Hong Kong	1 550	272.5	-	1 456	106.8	-
"	UK	2 035	-	-	315	-	-
"	ALL SERVICES	3 585	272.5	-	1 771	106.8	-
TOTAL		9 707 573	383 422.8	15 333.7	9 663 477	293 070.4	13 364.3

Please refer to explanatory notes - paragraphs 3, 6 and 13 in particular.

(a) Data for July to December 2004 for operations to/from Melbourne may contain errors.

(b) Service recommenced May 2004.

(c) No outbound freight data for September 2000 onwards. No inbound freight data for April 2001 onwards.

(d) Jakarta/Christmas Island scheduled services commenced in August 2001 and ceased in February 2004 - no data has been received for these services.

(e) Kupang/Darwin services recommenced in June 2004. Data shown is for these services.

(f) Service commenced August 2004 and ceased December 2004. No data has been received.

(g) Service commenced January 2004.

(h) No data received for March 2003 and onwards.

(i) Operated services recommenced in December 2002 and ceased in April 2004. No data received for July 2003 and onwards.

(j) Service commenced December 2004.

(k) No data received for inbound operations to Sydney for August 2002 to May 2004 and for July 2004 to November 2004 and January 2005. Data for Outbound operations have been received for July 2003 and onwards.

(l) All freight carried is reported as to/from Hong Kong.

TABLE 2: SCHEDULED OPERATOR MARKET SHARES AND GROWTH: Year ended December

Scheduled Operators	Country to/from	Total Passengers				Total Freight (tonnes)				Total Mail (tonnes)			
		2003	2004	(%) of TOTAL	(%) Change	2003	2004	(%) of TOTAL	(%) Change	2003	2004	(%) of TOTAL	(%) Change
Aerolineas Argentinas	Argentina	29 233	32 216	0.2	10.2	237.2	278.9	0.0	17.6	4.6	4.7	0.0	2.2
"	New Zealand	11 158	7 149	0.0	-35.9	1 611.8	1 129.6	0.2	-29.9	-	-	-	..
"	ALL SERVICES	40 391	39 365	0.2	-2.5	1 848.9	1 408.5	0.2	-23.8	4.6	4.7	0.0	2.2
Air Caledonie	New Caledonia	74 304	79 485	0.4	7.0	619.2	656.0	0.1	5.9	21.7	20.5	0.1	-5.7
Air Canada	Canada	93 082	104 703	0.5	12.5	634.1	339.8	0.1	-46.4	37.1	29.3	0.1	-21.0
"	USA	51 824	34 456	0.2	-33.5	4 406.8	5 678.6	0.8	28.9	216.9	247.9	0.9	14.3
"	ALL SERVICES	144 906	139 159	0.7	-4.0	5 040.9	6 018.3	0.9	19.4	254.0	277.2	1.0	9.1
Air China	China	118 506	143 969	0.7	21.5	1 525.6	1 494.9	0.2	-2.0	18.3	40.8	0.1	122.2
Air Mauritius	Mauritius	29 424	37 704	0.2	28.1	825.2	1 054.4	0.2	27.8	1.6	2.7	0.0	67.9
Air Nauru	Nauru	10 963	9 399	0.0	-14.3	291.6	215.9	0.0	-26.0	9.0	4.7	0.0	-48.2
"	Solomon Islands	25	4 681	0.0	>999.9	-	0.8	0.0	..	-	-	-	..
"	ALL SERVICES	10 988	14 080	0.1	28.1	291.6	216.7	0.0	-25.7	9.0	4.7	0.0	-48.2
Air New Zealand	New Zealand	1 438 030	1 614 563	8.3	12.3	34 911.2	26 452.4	3.9	-24.2	1 900.8	2 030.1	7.1	6.8
"	USA	38 331	-100.0	734.2	-100.0	17.4	-100.0
"	ALL SERVICES	1 476 361	1 614 563	8.3	9.4	35 645.4	26 452.4	3.9	-25.8	1 918.2	2 030.1	7.1	5.8
Air Niugini	Papua New Guinea	127 131	133 023	0.7	4.6	3 284.2	5 153.4	0.8	56.9	277.5	282.4	1.0	1.8
Air Pacific	Fiji	378 609	418 645	2.2	10.6	7 210.2	8 373.5	1.2	16.1	171.7	203.5	0.7	18.5
Air Paradise International (a) (b)	Indonesia	92 644	203 572	1.1	119.7	357.8	992.3	0.1	177.4	-	0.0	0.0	..
Air Vanuatu	Vanuatu	56 824	62 348	0.3	9.7	411.6	417.9	0.1	1.5	158.8	82.4	0.3	-48.1
Asian Express Airlines	New Zealand	7 837.6	6 966.1	1.0	-11.1	-	-	-	..
Asiana Airlines	Korea	141 416	146 274	0.8	3.4	6 198.7	4 418.8	0.7	-28.7	100.4	150.5	0.5	49.9
Australian Airlines	Hong Kong	36 558	52 384	0.3	43.3	2 233.0	2 503.7	0.4	12.1	-	-	-	..
"	Indonesia	36 199	102 983	0.5	184.5	92.9	442.9	0.1	376.9	0.0	0.5	0.0	1051.2
"	Japan	287 555	346 402	1.8	20.5	4 753.1	4 626.6	0.7	-2.7	18.2	47.4	0.2	161.1
"	Malaysia	9 621	32 641	0.2	239.3	260.7	376.3	0.1	44.3	-	-	-	..
"	Singapore	53 503	89 567	0.5	67.4	1 282.2	2 143.4	0.3	67.2	15.4	32.1	0.1	108.3
"	Taiwan	12 354	-100.0	375.9	-100.0	18.0	-100.0
"	ALL SERVICES	435 790	623 977	3.2	43.2	8 997.9	10 092.8	1.5	12.2	51.6	80.0	0.3	54.9
British Airways	Singapore	141 827	157 505	0.8	11.1	7 544.1	5 801.8	0.9	-23.1	5.1	0.2	0.0	-96.7
"	Thailand	126 634	141 937	0.7	12.1	2 775.8	2 388.9	0.4	-13.9	0.0	-	-	-100.0
"	UK	278 786	277 283	1.4	-0.5	6 017.0	8 165.3	1.2	35.7	69.8	35.8	0.1	-48.7
"	ALL SERVICES	547 247	576 725	3.0	5.4	16 336.9	16 356.1	2.4	0.1	74.9	36.0	0.1	-52.0
Cargolux Airlines Intl	Luxembourg	4 106.4	4 585.0	0.7	11.7	-	-	-	..
"	Malaysia	518.5	58.1	0.0	-88.8	-	-	-	..
"	New Zealand	5 163.0	5 171.1	0.8	0.2	-	-	-	..
"	ALL SERVICES	-	-	-	..	9 787.9	9 814.2	1.5	0.3	-	-	-	..
Cathay Pacific Airways	Hong Kong	626 938	764 932	3.9	22.0	53 702.6	57 461.2	8.5	7.0	332.7	781.1	2.7	134.8
China Airlines	Taiwan	87 209	122 167	0.6	40.1	2 411.4	2 917.4	0.4	21.0	109.0	141.1	0.5	29.5
China Eastern Airlines	China	69 692	126 322	0.7	81.3	2 550.8	4 426.6	0.7	73.5	13.0	11.7	0.0	-9.7
China Southern Airlines	China	56 423	76 673	0.4	35.9	2 100.6	2 244.2	0.3	6.8	22.6	39.6	0.1	74.9
Continental Micronesia	Guam	25 193	27 372	0.1	8.6	37.8	38.8	0.0	2.6	0.2	1.0	0.0	411.1
Emirates	New Zealand	85 677	280 249	1.4	227.1	6 112.9	24 308.0	3.6	297.6	0.1	1.9	0.0	1168.7
"	Singapore	41 949	51 174	0.3	22.0	7 778.2	5 523.7	0.8	-29.0	139.2	66.3	0.2	-52.4
"	United Arab Emirates	429 335	570 625	2.9	32.9	14 110.3	18 812.1	2.8	33.3	131.2	227.4	0.8	73.3
"	ALL SERVICES	556 961	902 048	4.7	62.0	28 001.4	48 643.7	7.2	73.7	270.5	295.5	1.0	9.2

TABLE 2: SCHEDULED OPERATOR MARKET SHARES AND GROWTH: Year ended December

Scheduled Operators	Country to/from	Total Passengers				Total Freight (tonnes)				Total Mail (tonnes)			
		2003	2004	(%) of TOTAL	(%) Change	2003	2004	(%) of TOTAL	(%) Change	2003	2004	(%) of TOTAL	(%) Change
Eva Air	Taiwan	75 521	81 961	0.4	8.5	3 647.5	3 328.4	0.5	-8.7	44.7	47.3	0.2	5.8
Federal Express Corporation	Philippines	6 765.7	5 409.6	0.8	-20.0	-	-	-	..
"	USA	13 540.3	13 582.2	2.0	0.3	71.6	22.7	0.1	-68.3
"	ALL SERVICES	-	-	-	..	20 306.0	18 991.8	2.8	-6.5	71.6	22.7	0.1	-68.3
Freedom Air International	New Zealand	511 630	508 340	2.6	-0.6	-	-	-	..	-	-	-	..
Garuda Indonesia	Indonesia	235 487	333 712	1.7	41.7	6 594.1	6 933.1	1.0	5.1	6.8	18.1	0.1	166.2
"	New Zealand	19 027	10 892	0.1	-42.8	2 388.8	1 214.9	0.2	-49.1	-	-	-	..
"	ALL SERVICES	254 514	344 604	1.8	35.4	8 982.9	8 148.1	1.2	-9.3	6.8	18.1	0.1	166.2
Gemini Air Cargo (c) (d)	USA	498.0	-100.0	4.2	-100.0
Gulf Air (e)	Bahrain	7 892	101 298	0.5	1183.6	159.5	2 821.9	0.4	1669.3	20.0	149.2	0.5	647.5
"	Singapore	5 780	22 983	0.1	297.6	122.0	2 936.5	0.4	2307.6	0.1	28.3	0.1	>999.9
"	ALL SERVICES	13 672	124 281	0.6	809.0	281.5	5 758.5	0.9	1945.9	20.0	177.4	0.6	786.2
Hawaiian Airlines (f)	USA	..	45 955	0.2	354.3	0.1	4.0	0.0	..
Japan Airlines	Japan	707 050	733 755	3.8	3.8	16 541.2	18 545.7	2.7	12.1	1 168.2	1 175.4	4.1	0.6
Korean Air	Korea	250 297	270 540	1.4	8.1	10 989.4	21 938.2	3.2	99.6	579.3	563.4	2.0	-2.7
Lan Chile	Chile	38 080	40 086	0.2	5.3	1 144.3	1 346.0	0.2	17.6	25.5	36.8	0.1	43.9
"	New Zealand	16 418	24 306	0.1	48.0	621.9	448.8	0.1	-27.8	29.9	5.5	0.0	-81.7
"	ALL SERVICES	54 498	64 392	0.3	18.2	1 766.2	1 794.8	0.3	1.6	55.5	42.2	0.1	-23.9
Lauda Air (g)	Austria	161 455	182 965	0.9	13.3	-	-	-	..	-	-	-	..
"	Malaysia	24 095	23 029	0.1	-4.4	-	-	-	..	-	-	-	..
"	Singapore	..	6 622	0.0	-	-	-	-	..
"	ALL SERVICES	185 550	212 616	1.1	14.6	-	-	-	..	-	-	-	..
Lufthansa German Airlines	Germany	1 381.1	3 242.1	0.5	134.8	6.0	0.0	0.0	-99.4
"	India	1.4	1.1	0.0	-19.1	-	-	-	..
"	Malaysia	520.7	113.0	0.0	-78.3	-	-	-	..
"	New Zealand	3 009.6	2 754.0	0.4	-8.5	7.3	1.5	0.0	-80.0
"	Pakistan	27.7	-	-	-100.0	-	-	-	..
"	Thailand	3.8	52.7	0.0	1282.7	-	-	-	..
"	United Arab Emirates	17.1	2.5	0.0	-85.3	-	-	-	..
"	USA	4 882.0	6 414.3	0.9	31.4	-	-	-	..
"	ALL SERVICES	-	-	-	..	9 843.4	12 579.8	1.9	27.8	13.4	1.5	0.0	-88.8
Malaysia Airlines	Malaysia	875 136	991 607	5.1	13.3	44 975.1	41 557.3	6.1	-7.6	56.3	56.7	0.2	0.7
"	New Zealand	27 104	4 151	0.0	-84.7	1 415.1	54.4	0.0	-96.2	-	-	-	..
"	ALL SERVICES	902 240	995 758	5.1	10.4	46 390.2	41 611.7	6.2	-10.3	56.3	56.7	0.2	0.7
Martinair Holland	Bahrain	15.0	0.0	-	-	..
"	China	146.2	-100.0	-
"	Hong Kong	853.5	572.6	0.1	-32.9	-	-	-	..
"	Ireland	25.7	-100.0	-
"	Japan	105.0	143.0	0.0	36.2	-	-	-	..
"	Macau	83.0	0.0	-	-	..
"	Netherlands	10 118.2	9 382.2	1.4	-7.3	-	-	-	..
"	New Zealand	32.1	0.0	-	-	..
"	Taiwan	32.6	-100.0	-
"	Thailand	176.7	209.6	0.0	18.6	-	-	-	..
"	UK	7.5	-100.0	-

TABLE 2: SCHEDULED OPERATOR MARKET SHARES AND GROWTH: Year ended December

Scheduled Operators	Country to/from	Total Passengers				Total Freight (tonnes)				Total Mail (tonnes)			
		2003	2004	(%) of TOTAL	(%) Change	2003	2004	(%) of TOTAL	(%) Change	2003	2004	(%) of TOTAL	(%) Change
Martinair Holland	United Arab Emirates	153.2	51.6	0.0	-66.4	-	-	-	..
"	ALL SERVICES	-	-	-	..	11 618.7	10 489.0	1.6	-9.7	-	-	-	..
Merpati Nusantara Airlines (h) (i)	Indonesia	..	1 514	0.0	..	-	-	-	..	-	-	-	..
Norfolk Jet Express (j)	New Zealand	-	-	-	-	..
Pacific Blue (k)	Fiji	..	23 957	0.1	-	-	-	-	..
"	New Zealand	..	280 631	1.4	-	-	-	-	..
"	Vanuatu	..	6 290	0.0	-	-	-	-	..
"	ALL SERVICES	-	310 878	1.6	..	-	-	-	..	-	-	-	..
Philippine Airlines	Philippines	63 587	69 743	0.4	9.7	2 050.7	1 948.5	0.3	-5.0	25.2	-	-	-100.0
Polar Air Cargo (l)	USA	994.4	-	-	-100.0	-	-	-	..
Polynesian Airlines	New Zealand	6 030	1 670	0.0	-72.3	8.3	8.2	0.0	-1.0	3.5	8.0	0.0	127.0
"	Niue	96	17	0.0	-82.3	0.9	-	-	-100.0	0.4	-	-	-100.0
"	Tahiti	380	-100.0	1.2	-100.0	3.9	-100.0
"	Tonga	1 437	5 126	0.0	256.7	21.2	38.1	0.0	79.7	5.3	7.0	0.0	33.3
"	Western Samoa	11 162	12 635	0.1	13.2	76.2	84.0	0.0	10.3	7.2	6.3	0.0	-12.2
"	ALL SERVICES	19 105	19 448	0.1	1.8	107.7	130.3	0.0	21.0	20.4	21.3	0.1	4.8
Qantas Airways	China	..	5 986	0.0	1 508.2	0.2	0.8	0.0	..
"	Fiji	1 117	-100.0	15.1	0.0	0.0	-99.8	0.5	-	-	-100.0
"	France	16 609	15 453	0.1	-7.0	448.5	245.3	0.0	-45.3	25.3	8.0	0.0	-68.6
"	Germany	81 362	78 477	0.4	-3.5	2 093.5	2 358.3	0.3	12.6	952.7	551.0	1.9	-42.2
"	Greece	..	314	0.0	-	-	-	-	..
"	Hong Kong	343 032	537 918	2.8	56.8	12 060.0	23 047.9	3.4	91.1	989.9	1 026.5	3.6	3.7
"	India	..	27 543	0.1	294.4	0.0	14.4	0.1	..
"	Indonesia	152 583	148 059	0.8	-3.0	2 148.4	2 308.0	0.3	7.4	70.9	63.0	0.2	-11.0
"	Italy	13 996	-100.0	560.7	-100.0	7.6	-100.0
"	Japan	550 202	607 979	3.1	10.5	11 952.2	15 055.1	2.2	26.0	2 326.5	2 415.0	8.4	3.8
"	New Caledonia	40 301	43 854	0.2	8.8	184.4	220.0	0.0	19.3	29.3	28.6	0.1	-2.7
"	New Zealand	1 617 506	1 784 583	9.2	10.3	43 879.7	46 767.3	6.9	6.6	2 390.3	2 171.1	7.6	-9.2
"	Philippines	73 859	89 522	0.5	21.2	1 841.6	1 571.8	0.2	-14.7	67.4	65.5	0.2	-2.9
"	Singapore	913 568	928 549	4.8	1.6	34 094.4	34 815.4	5.1	2.1	3 408.7	3 201.2	11.2	-6.1
"	South Africa	129 194	116 604	0.6	-9.7	1 623.0	2 033.4	0.3	25.3	152.1	159.9	0.6	5.2
"	Thailand	99 287	105 402	0.5	6.2	1 577.0	1 447.9	0.2	-8.2	344.4	337.7	1.2	-1.9
"	UK	306 801	334 338	1.7	9.0	5 452.3	7 500.1	1.1	37.6	3 775.0	3 731.6	13.0	-1.2
"	USA	826 511	940 524	4.9	13.8	12 319.3	22 762.6	3.4	84.8	3 546.4	3 962.0	13.8	11.7
"	ALL SERVICES	5 165 928	5 765 105	29.8	11.6	130 250.2	161 935.7	23.9	24.3	18 086.9	17 736.3	61.8	-1.9
Royal Brunei Airlines	Brunei	97 808	102 097	0.5	4.4	3 702.8	2 708.5	0.4	-26.9	1.1	0.2	0.0	-84.3
"	New Zealand	3 837	39 830	0.2	938.1	183.5	1 084.6	0.2	491.0	-	-	-	..
"	ALL SERVICES	101 645	141 927	0.7	39.6	3 886.3	3 793.1	0.6	-2.4	1.1	0.2	0.0	-84.3
Royal Tongan Airlines (m)	New Zealand	1 216	-100.0	0.3	-	-	-100.0	-	-	-	..
"	Tonga	2 928	-100.0	16.3	-	-	-100.0	-	-	-	..
"	ALL SERVICES	4 144	-	-	-100.0	16.6	-	-	-100.0	-	-	-	..
Singapore Airlines	Indonesia	2.9	84.3	0.0	2852.0	-	-	-	..
"	New Zealand	3 061.4	3 716.3	0.5	21.4	-	-	-	..
"	Singapore	1 796 992	2 028 837	10.5	12.9	97 876.8	99 119.9	14.7	1.3	1 178.0	1 575.4	5.5	33.7
"	ALL SERVICES	1 796 992	2 028 837	10.5	12.9	100 941.0	102 920.6	15.2	2.0	1 178.0	1 575.4	5.5	33.7

TABLE 2: SCHEDULED OPERATOR MARKET SHARES AND GROWTH: Year ended December

Scheduled Operators	Country to/from	Total Passengers				Total Freight (tonnes)				Total Mail (tonnes)			
		2003	2004	(%) of TOTAL	(%) Change	2003	2004	(%) of TOTAL	(%) Change	2003	2004	(%) of TOTAL	(%) Change
Solomon Airlines	Solomon Islands	18 046	20 856	0.1	15.6	170.3	203.5	0.0	19.4	-	-	-	..
South African Airways	South Africa	92 756	95 346	0.5	2.8	3 395.2	3 633.1	0.5	7.0	51.6	51.6	0.2	0.0
Thai Airways International	New Zealand	132 557	108 876	0.6	-17.9	6 571.7	6 840.0	1.0	4.1	1.0	0.2	0.0	-80.7
"	Thailand	549 788	617 857	3.2	12.4	23 212.9	22 273.0	3.3	-4.0	1 303.0	1 214.9	4.2	-6.8
"	ALL SERVICES	682 345	726 733	3.8	6.5	29 784.6	29 113.0	4.3	-2.3	1 304.0	1 215.1	4.2	-6.8
United Airlines	USA	390 116	430 053	2.2	10.2	7 818.2	6 735.7	1.0	-13.8	1 525.8	1 503.9	5.2	-1.4
United Parcel Service	Hong Kong	55.1	200.1	0.0	263.4	-	-	-	..
"	Philippines	202.7	2.6	0.0	-98.7	-	-	-	..
"	Taiwan	29.9	157.4	0.0	426.5	-	-	-	..
"	USA	4 685.5	4 613.1	0.7	-1.5	-	-	-	..
"	ALL SERVICES	-	-	-	..	4 973.1	4 973.3	0.7	0.0	-	-	-	..
Valuair (n)	Singapore	..	6 661	0.0	0.2	0.0	-	-	..
Vietnam Airlines (o)	Vietnam	64 138	113 988	0.6	77.7	932.9	1 568.5	0.2	68.1	-	-	-	..
Virgin Atlantic Airways (n) (p)	Hong Kong	..	3 006	0.0	379.3	0.1	-	-	..
"	UK	..	2 350	0.0	-	-	-	-	..
"	ALL SERVICES	-	5 356	0.0	..	-	379.3	0.1	..	-	-	-	..
TOTAL		16 450 731	19 371 050	100.0	17.8	611 210.4	676 493.2	100.0	10.7	28 023.2	28 698.0	100.0	2.4

Please refer to explanatory notes - paragraphs 3, 6 and 13 in particular.

(a) Service commenced February 2003.

(b) Data for July to December 2004 for operations to/from Melbourne may contain errors.

(c) Traffic carried on behalf of Qantas Airways.

(d) Service commenced March 2002 and ceased March 2003.

(e) Service recommenced November 2003.

(f) Service recommenced May 2004.

(g) No outbound freight data for September 2000 onwards. No inbound freight data for April 2001 onwards.

(h) Jakarta/Christmas Island scheduled services commenced in August 2001 and ceased in February 2004 - no data has been received for these services.

(i) Kupang/Darwin services recommenced in June 2004. Data shown is for these services.

(j) Service commenced August 2004 and ceased December 2004. No data has been received.

(k) Service commenced January 2004.

(l) No data received for March 2003 and onwards.

(m) Operated services recommenced in December 2002 and ceased in April 2004. No data received for July 2003 and onwards.

(n) Service commenced December 2004.

(o) No data received for inbound operations to Sydney for August 2002 to May 2004 and for July 2004 to November 2004 and January 2005. Data for Outbound operations have been received for July 2003 and onwards.

(p) All freight carried is reported as to/from Hong Kong at this stage.

TABLE 3: AIRLINE PASSENGER CAPACITY AND UTILISATION TO AND FROM AUSTRALIA BY OPERATOR: Year ended December 2004

Scheduled Operator	Service to/from	Inbound				Outbound			
		No. of Flights	Pax Carried	Seats Available	Seat Utilisation %	No. of Flights	Pax Carried	Seats Available	Seat Utilisation %
Aerolineas Argentinas	Argentina	116	19 717	28 652	68.8	116	19 648	28 652	68.6
Air Caledonie	New Caledonia	323	40 155	56 673	70.9	322	39 330	56 527	69.6
Air Canada	Canada	411	69 719	97 377	71.6	410	69 440	96 594	71.9
Air China	China	367	73 601	111 427	66.1	367	70 368	111 427	63.2
Air Mauritius	Mauritius	106	19 162	25 149	76.2	105	18 542	24 968	74.3
Air Nauru	Nauru	103	7 485	13 300	56.3	103	6 595	11 834	55.7
Air New Zealand	New Zealand	6 366	804 769	1 131 019	71.2	6 347	809 794	1 128 160	71.8
Air Niugini	Papua New Guinea	817	65 578	122 773	53.4	816	67 445	122 748	54.9
Air Pacific	Fiji	1 071	208 465	306 152	68.1	1 071	210 180	306 152	68.7
Air Paradise International (a)	Indonesia	607	101 383	131 214	77.3	606	102 189	131 028	78.0
Air Vanuatu	Vanuatu	474	31 502	60 047	52.5	475	30 846	60 113	51.3
Asian Express Airlines (b)	New Zealand	212	..	-	..	212	..	-	..
Asiana Airlines	Korea	366	73 986	113 460	65.2	366	72 288	113 460	63.7
Australian Airlines	Hong Kong	156	29 387	41 667	70.5	157	23 152	41 950	55.2
"	Indonesia	112	23 056	29 881	77.2	112	22 864	29 873	76.5
"	Japan	900	175 162	241 778	72.4	901	171 695	242 142	70.9
"	Malaysia	124	20 798	32 536	63.9	124	21 285	32 538	65.4
"	Singapore	355	71 241	94 812	75.1	355	74 460	94 798	78.5
"	ALL SERVICES	1 647	319 644	440 674	72.5	1 649	313 456	441 301	71.0
British Airways	UK	1 097	294 817	401 047	73.5	1 096	281 908	400 696	70.4
Cargolux Airlines Intl (b)	Luxembourg	101	-	..	-	..
"	New Zealand	-	..	-	..	101
"	ALL SERVICES	101	-	-	..	101	-	-	..
Cathay Pacific Airways	Hong Kong	2 081	390 427	526 682	74.1	2 081	374 505	526 682	71.1
China Airlines	Taiwan	331	60 809	88 089	69.0	331	61 358	88 089	69.7
China Eastern Airlines	China	376	65 368	108 083	60.5	376	60 954	108 083	56.4
China Southern Airlines	China	203	38 659	58 755	65.8	203	38 014	58 752	64.7
Continental Micronesia	Guam	156	13 405	24 024	55.8	156	13 967	24 024	58.1
Emirates	New Zealand	1 227	139 482	402 029	34.7	1 228	140 767	402 287	35.0
"	United Arab Emirates	1 599	316 516	506 257	62.5	1 598	305 283	505 999	60.3
"	ALL SERVICES	2 826	455 998	908 286	50.2	2 826	446 050	908 286	49.1
Eva Air	Taiwan	238	41 046	56 138	73.1	238	40 915	56 138	72.9
Federal Express Corporation (b)	Philippines	-	..	-	..	261
"	USA	261	-	..	-	..
"	ALL SERVICES	261	-	-	..	261	-	-	..
Freedom Air International	New Zealand	2 603	254 355	356 784	71.3	2 597	253 985	367 639	69.1
Garuda Indonesia	Indonesia	1 049	166 162	229 835	72.3	1 045	167 550	228 824	73.2
"	New Zealand	103	5 514	30 739	17.9	103	5 378	30 739	17.5
"	ALL SERVICES	1 152	171 676	260 574	65.9	1 148	172 928	259 563	66.6
Gulf Air	Bahrain	363	60 305	96 195	62.7	359	63 976	95 135	67.2
Hawaiian Airlines (c)	USA	131	21 571	34 584	62.4	131	24 384	34 584	70.5
Japan Airlines	Japan	1 118	367 443	498 224	73.8	1 117	366 312	493 994	74.2
Korean Air	Korea	655	138 203	184 421	74.9	655	132 337	184 421	71.8
Lan Chile	Chile	160	30 454	41 440	73.5	160	33 938	41 440	81.9
Lauda Air (d)	Austria	421	105 836	144 824	73.1	421	106 780	144 824	73.7

TABLE 3: AIRLINE PASSENGER CAPACITY AND UTILISATION TO AND FROM AUSTRALIA BY OPERATOR: Year ended December 2004

Scheduled Operator	Service to/from	Inbound				Outbound			
		No. of Flights	Pax Carried	Seats Available	Seat Utilisation %	No. of Flights	Pax Carried	Seats Available	Seat Utilisation %
Lufthansa German Airlines (b)	Germany	207	..	-	..	206	..	-	..
Malaysia Airlines	Malaysia	2 548	500 702	753 091	66.5	2 519	490 905	753 152	65.2
"	New Zealand	37	2 324	14 169	16.4	36	1 827	13 788	13.3
"	ALL SERVICES	2 585	503 026	767 260	65.6	2 555	492 732	766 940	64.2
Martinair Holland (b)	Netherlands	102	..	-	..	103	..	-	..
Merpati Nusantara Airlines (e) (f)	Indonesia	58	619	1 624	38.1	58	895	1 624	55.1
Norfolk Jet Express (g)	New Zealand	-	..	-	..	-	..	-	..
Pacific Blue (h)	Fiji	102	10 925	18 360	59.5	102	13 032	18 360	71.0
"	New Zealand	1 191	137 326	214 380	64.1	1 191	143 305	214 380	66.8
"	Vanuatu	30	2 938	5 400	54.4	30	3 352	5 400	62.1
"	ALL SERVICES	1 323	151 189	238 140	63.5	1 323	159 689	238 140	67.1
Philippine Airlines	Philippines	158	35 554	47 931	74.2	158	34 189	47 931	71.3
Polar Air Cargo (b) (i)	USA	-	..	-	..	-	..	-	..
Polynesian Airlines	Western Samoa	100	9 463	15 486	61.1	100	9 985	15 486	64.5
Qantas Airways	China	14	2 751	3 860	71.3	13	3 279	3 860	84.9
"	France	131	40 292	56 382	71.5	130	38 891	56 003	69.4
"	Germany	365	130 618	156 617	83.4	366	130 014	157 180	82.7
"	Greece	2	539	811	66.5
"	Hong Kong	1 398	276 048	395 728	69.8	1 396	272 664	393 972	69.2
"	India	53	14 060	23 679	59.4	53	15 177	19 903	76.3
"	Indonesia	617	76 763	121 534	63.2	618	76 608	121 696	63.0
"	Japan	1 613	315 987	447 348	70.6	1 618	318 927	448 675	71.1
"	New Caledonia	211	26 504	38 525	68.8	210	26 907	38 334	70.2
"	New Zealand	5 505	850 206	1 056 509	80.5	5 506	863 242	1 057 396	81.6
"	Philippines	157	48 485	67 674	71.6	157	47 113	67 694	69.6
"	Singapore	1 102	257 704	330 048	78.1	1 100	240 895	330 330	72.9
"	South Africa	218	73 243	85 185	86.0	218	66 829	82 203	81.3
"	Thailand	1	40	215	18.6
"	UK	1 146	366 724	435 804	84.1	1 148	360 117	436 517	82.5
"	USA	2 094	586 989	756 728	77.6	2 161	604 768	769 060	78.6
"	ALL SERVICES	14 627	3 066 953	3 976 647	77.1	14 694	3 065 431	3 982 823	77.0
Royal Brunei Airlines	Brunei	538	49 468	98 743	50.1	539	52 629	98 893	53.2
"	New Zealand	200	20 533	44 115	46.5	201	19 297	44 313	43.5
"	ALL SERVICES	738	70 001	142 858	49.0	740	71 926	143 206	50.2
Royal Tongan Airlines (j)	Tonga	-	..	-	..	-	..	-	..
Singapore Airlines	Singapore	3 976	1 022 342	1 288 119	79.4	3 975	1 006 495	1 287 839	78.2
Solomon Airlines	Solomon Islands	131	9 974	17 816	56.0	144	10 882	19 584	55.6
South African Airways	South Africa	265	50 659	64 681	78.3	266	44 687	64 916	68.8
Thai Airways International	New Zealand	520	58 451	196 920	29.7	520	50 425	196 920	25.6
"	Thailand	1 360	306 743	484 660	63.3	1 359	311 114	484 255	64.2
"	ALL SERVICES	1 880	365 194	681 580	53.6	1 879	361 539	681 175	53.1
United Airlines	USA	741	214 266	257 127	83.3	735	215 787	255 045	84.6
United Parcel Service (b)	Hong Kong	-	..	-	..	51
"	Taiwan	-	..	-	..	52
"	USA	102	-	..	-	..

TABLE 3: AIRLINE PASSENGER CAPACITY AND UTILISATION TO AND FROM AUSTRALIA BY OPERATOR: Year ended December 2004

Scheduled Operator	Service to/from	Inbound				Outbound			
		No. of Flights	Pax Carried	Seats Available	Seat Utilisation %	No. of Flights	Pax Carried	Seats Available	Seat Utilisation %
United Parcel Service	ALL SERVICES	102	-	-	..	103	-	-	..
Valuair (k)	Singapore	31	2 909	4 938	58.9	31	3 752	4 938	76.0
Vietnam Airlines (l)	Vietnam	352	39 339	114 305	34.4	354	74 649	114 919	65.0
Virgin Atlantic Airways (k) (m)	UK	24	3 585	7 464	48.0	24	1 771	7 464	23.7
TOTAL		54 659	9 890 611	14 052 043	70.4	54 670	9 856 841	14 057 344	70.1

Please refer to explanatory notes - paragraphs 4, 5, 7 and 14 in particular.

In addition to the above, please note the following regarding **Seat Factors** shown in this table:

Traffic shown in this table for Australian Airlines and Qantas Airways will differ from traffic shown in Tables 1 and 2 because of the inclusion in this table of total traffic into and ex Australia (for seat factor purposes) whereas Tables 1 and 2 include uplift/discharge traffic only.

All other airlines report uplift/discharge traffic only. Therefore, for other airlines operating **via** Australia, the seat factors shown here reflect the total seats on the aircraft but only the Australian uplift/discharge portion of passengers on the aircraft. The true seat factors for airlines that operate **via** Australia will most likely be higher than what is shown in this table.

For example, on Dubai-Sydney-Auckland services:

Seats on the Dubai-Sydney sector are taken up by Dubai-Sydney and Dubai-Auckland passengers. However, when calculating seat factors, only the Dubai-Sydney passengers are used.

Similarly, seats on the Sydney-Auckland sector are taken up by Sydney-Auckland and Dubai-Auckland passengers. However, when calculating seat factors, only the Sydney-Auckland passengers are used.

The following airlines are affected:

Emirates, Garuda Indonesia, Malaysia Airlines, Royal Brunei Airlines and Thai Airways International

(a) Data for July to December 2004 for operations to/from Melbourne may contain errors.

(b) Freight flights only.

(c) Service recommenced May 2004.

(d) No outbound freight data for September 2000 onwards. No inbound freight data for April 2001 onwards.

(e) Jakarta/Christmas Island scheduled services commenced in August 2001 and ceased in February 2004 - no data has been received for these services.

(f) Kupang/Darwin services recommenced in June 2004. Data shown is for these services.

(g) Service commenced August 2004 and ceased December 2004. No data has been received.

(h) Service commenced January 2004.

(i) No data received for March 2003 and onwards.

(j) Operated services recommenced in December 2002 and ceased in April 2004. No data received for July 2003 and onwards.

(k) Service commenced December 2004.

(l) No data received for inbound operations to Sydney for August 2002 to May 2004 and for July 2004 to November 2004 and January 2005. Data for Outbound operations have been received for July 2003 and onwards.

(m) All freight carried is reported as to/from Hong Kong.

TABLE 4: SCHEDULED INTERNATIONAL AIRPORT TRAFFIC AND AIRCRAFT MOVEMENTS: Year ended December

		Inbound		(%)	Outbound		(%)	Total		(%)	(%) of
		2003	2004	Change	2003	2004	Change	2003	2004	Change	TOTAL
Adelaide	Passengers	107 577	147 055	36.7	99 272	139 028	40.0	206 849	286 083	38.3	1.5
"	Freight (Tonnes)	5 225	6 235	19.3	7 400	7 306	-1.3	12 625	13 542	7.3	2.0
"	Aircraft Movements	888	995	12.0	885	995	12.4	1 773	1 990	12.2	1.6
Brisbane	Passengers	1 303 068	1 652 284	26.8	1 246 376	1 614 197	29.5	2 549 444	3 266 481	28.1	16.9
"	Freight (Tonnes)	29 319	38 925	32.8	37 592	38 968	3.7	66 911	77 893	16.4	11.5
"	Aircraft Movements	8 350	10 513	25.9	8 350	10 525	26.0	16 700	21 038	26.0	16.4
Cairns	Passengers	375 819	430 620	14.6	370 742	416 226	12.3	746 561	846 846	13.4	4.4
"	Freight (Tonnes)	2 206	2 994	35.7	9 541	7 917	-17.0	11 748	10 911	-7.1	1.6
"	Aircraft Movements	3 682	4 348	18.1	3 698	4 346	17.5	7 380	8 694	17.8	6.8
Canberra	Passengers	..	994	1 002	..	-	1 996	..	0.0
"	Freight (Tonnes)	..	-	-	..	-	-
"	Aircraft Movements	..	21	21	..	-	42	..	0.0
Darwin	Passengers	38 276	49 885	30.3	39 414	48 489	23.0	77 690	98 374	26.6	0.5
"	Freight (Tonnes)	271	361	33.2	460	198	-57.0	730	558	-23.5	0.1
"	Aircraft Movements	637	877	37.7	637	876	37.5	1 274	1 753	37.6	1.4
Gold Coast/Coolangatta	Passengers	70 007	67 554	-3.5	68 931	68 854	-0.1	138 938	136 408	-1.8	0.7
"	Freight (Tonnes)	911	230	-74.8	0	2	2222.2	911	232	-74.6	0.0
"	Aircraft Movements	997	962	-3.5	967	958	-0.9	1 964	1 920	-2.2	1.5
Melbourne	Passengers	1 620 653	1 993 040	23.0	1 578 881	1 943 395	23.1	3 199 534	3 936 435	23.0	20.3
"	Freight (Tonnes)	90 962	108 764	19.6	88 695	85 477	-3.6	179 658	194 241	8.1	28.7
"	Aircraft Movements	10 674	13 335	24.9	10 655	13 346	25.3	21 329	26 681	25.1	20.9
Norfolk Island	Passengers	7 777	9 586	23.3	7 475	9 627	28.8	15 252	19 213	26.0	0.1
"	Freight (Tonnes)	118	115	-2.5	14	14	3.1	132	129	-1.9	0.0
"	Aircraft Movements	105	104	-1.0	101	104	3.0	206	208	1.0	0.2
Perth	Passengers	817 616	930 693	13.8	769 006	896 696	16.6	1 586 622	1 827 389	15.2	9.4
"	Freight (Tonnes)	18 165	22 051	21.4	33 169	33 333	0.5	51 334	55 383	7.9	8.2
"	Aircraft Movements	4 374	4 737	8.3	4 424	4 787	8.2	8 798	9 524	8.3	7.4
Sydney	Passengers	3 922 337	4 425 862	12.8	4 007 504	4 525 963	12.9	7 929 841	8 951 825	12.9	46.2
"	Freight (Tonnes)	166 441	203 747	22.4	120 720	119 856	-0.7	287 162	323 604	12.7	47.8
"	Aircraft Movements	24 646	28 085	14.0	24 494	28 031	14.4	49 140	56 116	14.2	43.9
TOTAL	Passengers	8 263 130	9 707 573	17.5	8 187 601	9 663 477	18.0	16 450 731	19 371 050	17.8	100.0
	Freight (Tonnes)	313 619	383 423	22.3	297 592	293 070	-1.5	611 210	676 493	10.7	100.0
	Aircraft Movements	54 353	63 977	17.7	54 211	63 989	18.0	108 564	127 966	17.9	100.0

TABLE 5: SCHEDULED INTERNATIONAL TRAFFIC BY CITY PAIRS: Year ended December

Foreign Port	Australian Port	Passengers						Freight (tonnes)					
		2003			2004			2003			2004		
		Inbound	Outbound	Total	Inbound	Outbound	Total	Inbound	Outbound	Total	Inbound	Outbound	Total
Auckland	Adelaide	0	0	0	1 019	1 192	2 211	0.0	0.0	0.0	0.6	1.2	1.9
Bombay	"	0	0	0	5	0	5	0.0	0.0	0.0	0.0	0.0	0.0
Denpasar	"	5 918	5 790	11 708	19 190	19 929	39 119	158.7	49.4	208.1	265.0	78.8	343.7
Hong Kong	"	13 001	9 162	22 163	15 111	9 940	25 051	519.4	781.3	1 300.7	606.1	637.8	1 243.9
Kuala Lumpur	"	36 071	33 326	69 397	44 086	43 359	87 445	1 810.4	1 206.7	3 017.0	1 688.0	1 199.6	2 887.6
Singapore	"	52 587	50 994	103 581	67 612	64 608	132 220	2 736.1	5 362.7	8 098.8	3 675.7	5 388.9	9 064.5
Tokyo	"	0	0	0	32	0	32	0.0	0.0	0.0	0.0	0.0	0.0
Total	Adelaide	107 577	99 272	206 849	147 055	139 028	286 083	5 224.5	7 400.1	12 624.6	6 235.4	7 306.3	13 541.7
Auckland	Brisbane	263 583	267 283	530 866	345 599	363 229	708 828	7 353.2	7 441.9	14 795.1	8 216.0	8 546.5	16 762.4
Bandar Seri Begawan	"	22 464	24 412	46 876	17 771	19 241	37 012	889.5	1 415.2	2 304.8	606.7	1 018.1	1 624.8
Bangkok	"	28 386	28 192	56 578	38 368	38 573	76 941	903.1	1 452.0	2 355.1	1 386.2	1 148.9	2 535.0
Beijing	"	0	0	0	0	0	0	0.0	0.0	0.0	0.0	0.0	0.0
Christchurch	"	73 242	71 039	144 281	129 289	131 163	260 452	623.0	791.5	1 414.5	183.4	76.0	259.4
Denpasar	"	17 978	17 891	35 869	28 319	29 172	57 491	495.6	408.6	904.2	700.1	292.2	992.2
Dubai	"	10 803	8 093	18 896	50 933	53 450	104 383	88.2	198.5	286.7	1 273.6	1 205.7	2 479.3
Dunedin	"	15 456	15 840	31 296	15 617	16 290	31 907	0.0	0.0	0.0	0.0	0.0	0.0
Hamilton	"	21 203	22 012	43 215	21 646	21 972	43 618	0.0	0.0	0.0	0.0	0.0	0.0
Hong Kong	"	49 855	45 876	95 731	81 146	74 950	156 096	2 597.3	2 888.9	5 486.2	4 476.2	3 093.7	7 570.0
Honiara	"	9 002	9 069	18 071	12 567	12 970	25 537	97.5	72.9	170.3	159.4	44.9	204.3
Honolulu	"	2	0	2	0	0	0	0.0	0.0	0.0	0.0	0.0	0.0
Kota Kinabalu	"	0	0	0	0	0	0	0.0	70.3	70.3	0.0	0.0	0.0
Kuala Lumpur	"	50 488	47 580	98 068	53 804	54 788	108 592	1 608.0	1 043.1	2 651.1	1 773.0	1 048.7	2 821.7
London	"	9	0	9	0	0	0	0.0	0.0	0.0	0.0	0.0	0.0
Los Angeles	"	39 641	39 776	79 417	61 469	60 717	122 186	754.3	466.8	1 221.1	1 107.4	711.0	1 818.4
Manila	"	6 388	5 775	12 163	8 944	8 621	17 565	11.8	49.0	60.9	6.9	108.3	115.2
Nadi	"	34 819	34 383	69 202	48 394	48 693	97 087	156.2	350.6	506.8	230.0	485.6	715.6
Nauru	"	4 294	3 889	8 183	3 795	3 391	7 186	34.9	212.6	247.4	11.5	175.7	187.2
New York	"	9	0	9	20	0	20	0.0	0.0	0.0	0.0	0.0	0.0
Noumea	"	16 226	17 648	33 874	17 534	18 815	36 349	10.0	154.0	163.9	30.7	151.6	182.3
Osaka	"	83 848	25 074	108 922	85 568	24 606	110 174	698.3	1 288.3	1 986.6	922.3	1 459.5	2 381.8
Palmerston	"	18 690	18 331	37 021	20 846	20 594	41 440	0.0	0.0	0.0	0.0	0.0	0.0
Port Moresby	"	27 908	31 321	59 229	29 841	33 972	63 813	872.3	1 710.7	2 583.0	1 626.1	2 492.8	4 118.9
Port Vila	"	10 611	10 536	21 147	13 513	13 356	26 869	42.5	129.1	171.6	24.9	133.0	157.8
Queenstown	"	2 257	2 626	4 883	2 328	2 670	4 998	0.0	0.0	0.0	0.0	0.0	0.0
Rome	"	0	4 607	4 607	0	0	0	0.0	12.5	12.5	0.0	0.0	0.0
Seoul	"	30 728	25 322	56 050	35 003	27 186	62 189	406.2	1 371.6	1 777.9	816.3	1 592.1	2 408.4
Shanghai	"	0	0	0	175	175	350	0.0	0.0	0.0	0.0	0.0	0.0
Singapore	"	275 279	276 815	552 094	314 208	313 656	627 864	7 781.4	10 851.2	18 632.7	9 576.4	10 155.9	19 732.3
Taipei	"	27 090	28 382	55 472	44 958	45 040	89 998	1 196.7	977.4	2 174.1	2 182.3	914.1	3 096.4
Tokyo	"	118 588	119 780	238 368	124 066	130 361	254 427	2 694.3	4 222.9	6 917.2	3 608.6	4 098.7	7 707.3
Wellington	"	44 221	44 824	89 045	46 563	46 546	93 109	5.0	12.4	17.4	7.2	15.5	22.7
Total	Brisbane	1 303 068	1 246 376	2 549 444	1 652 284	1 614 197	3 266 481	29 319.2	37 592.2	66 911.4	38 925.1	38 968.2	77 893.3
Auckland	Cairns	21 194	23 471	44 665	21 940	23 432	45 372	170.3	179.6	349.8	152.1	109.0	261.1
Fukuoka	"	16 660	18 949	35 609	24 830	25 018	49 848	19.1	330.1	349.2	45.3	311.8	357.0
Guam	"	12 363	12 830	25 193	13 405	13 967	27 372	0.3	37.5	37.8	0.7	38.1	38.8

TABLE 5: SCHEDULED INTERNATIONAL TRAFFIC BY CITY PAIRS: Year ended December

Foreign Port	Australian Port	Passengers						Freight (tonnes)					
		2003			2004			2003			2004		
		Inbound	Outbound	Total	Inbound	Outbound	Total	Inbound	Outbound	Total	Inbound	Outbound	Total
Hong Kong	Cairns	38 105	33 540	71 645	49 982	42 018	92 000	710.9	3 839.4	4 550.3	1 051.4	2 836.1	3 887.5
Kota Kinabalu	"	206	317	523	416	326	742	6.2	0.0	6.2	0.0	0.0	0.0
Nagoya	"	65 696	64 854	130 550	70 101	67 010	137 111	99.9	1 352.9	1 452.7	133.2	880.6	1 013.8
Osaka	"	49 077	46 116	95 193	58 994	54 708	113 702	153.8	1 456.2	1 610.0	525.8	1 688.7	2 214.4
Port Moresby	"	24 335	21 336	45 671	26 873	23 248	50 121	76.0	188.6	264.6	84.4	152.6	237.0
Sapporo	"	0	0	0	3 140	2 900	6 040	0.0	0.0	0.0	0.8	1.3	2.1
Singapore	"	24 480	26 630	51 110	36 666	41 694	78 360	471.0	267.2	738.2	808.4	183.7	992.0
Taipei	"	6 230	6 124	12 354	0	0	0	289.2	86.7	375.9	0.0	0.0	0.0
Tokyo	"	117 473	116 575	234 048	124 273	121 905	246 178	209.9	1 803.2	2 013.1	192.1	1 714.8	1 907.0
Total	Cairns	375 819	370 742	746 561	430 620	416 226	846 846	2 206.4	9 541.5	11 747.9	2 994.2	7 916.6	10 910.8
Nadi	Canberra	0	0	0	994	1 002	1 996	0.0	0.0	0.0	0.0	0.0	0.0
Total	Canberra	0	0	0	994	1 002	1 996	0.0	0.0	0.0	0.0	0.0	0.0
Bandar Seri Begawan	Darwin	6 326	6 539	12 865	8 736	9 038	17 774	50.9	59.1	110.0	36.9	20.3	57.2
Bangkok	"	0	233	233	0	1	1	0.0	0.0	0.0	0.0	0.0	0.0
Denpasar	"	11 567	13 926	25 493	16 355	18 181	34 536	6.5	3.7	10.1	5.3	4.4	9.7
Hong Kong	"	0	0	0	1	0	1	0.0	0.0	0.0	0.0	0.0	0.0
Jakarta	"	0	0	0	0	0	0	0.0	0.0	0.0	0.0	0.4	0.4
Kuala Lumpur	"	0	0	0	0	0	0	0.0	0.0	0.0	0.0	33.8	33.8
Kupang	"	0	0	0	619	895	1 514	0.0	0.0	0.0	0.0	0.0	0.0
Singapore	"	20 383	18 716	39 099	24 174	20 374	44 548	213.4	396.9	610.3	318.6	138.8	457.4
Total	Darwin	38 276	39 414	77 690	49 885	48 489	98 374	270.9	459.6	730.5	360.8	197.7	558.5
Auckland	Gold Coast/Coolangatta	32 033	32 412	64 445	27 165	27 206	54 371	0.0	0.0	0.0	0.0	0.0	0.0
Christchurch	"	13 613	13 372	26 985	15 909	15 148	31 057	0.0	0.0	0.0	0.0	0.0	0.0
Dunedin	"	6 445	6 262	12 707	6 365	6 484	12 849	0.0	0.0	0.0	0.0	0.0	0.0
Fukuoka	"	499	0	499	29	0	29	6.0	0.0	6.0	0.0	0.0	0.0
Hamilton	"	8 964	8 641	17 605	9 310	9 354	18 664	0.0	0.0	0.0	0.0	0.0	0.0
Nagoya	"	2 038	1 627	3 665	0	0	0	138.0	0.1	138.0	0.0	0.0	0.0
Osaka	"	6 415	6 617	13 032	8 776	10 662	19 438	767.2	0.0	767.2	230.0	1.7	231.7
Total	Gold Coast/Coolangatta	70 007	68 931	138 938	67 554	68 854	136 408	911.2	0.1	911.2	230.0	1.7	231.7
Amsterdam	Melbourne	0	0	0	0	0	0	113.5	4.1	117.6	0.0	0.0	0.0
Atlanta	"	0	0	0	0	0	0	879.4	0.0	879.4	385.3	0.0	385.3
Auckland	"	266 802	269 229	536 031	313 449	314 282	627 731	15 731.1	16 936.7	32 667.9	17 741.0	16 727.3	34 468.3
Bangkok	"	96 761	94 663	191 424	108 409	93 126	201 535	4 924.7	5 169.2	10 093.9	4 588.2	4 895.7	9 484.0
Beijing	"	9 414	5 203	14 617	11 560	7 973	19 533	169.9	194.3	364.2	76.1	175.2	251.3
Chicago	"	2 049	2 525	4 574	0	0	0	4 186.3	0.0	4 186.3	5 218.6	613.8	5 832.4
Christchurch	"	79 889	79 107	158 996	118 141	119 190	237 331	1 407.4	873.5	2 280.9	1 580.0	828.9	2 408.9
Denpasar	"	41 462	40 783	82 245	69 639	68 553	138 192	1 239.8	1 697.1	2 936.9	1 791.0	1 534.5	3 325.5
Dubai	"	73 571	73 314	146 885	101 822	97 879	199 701	1 962.7	4 220.7	6 183.4	3 084.4	3 671.8	6 756.2
Dunedin	"	8 472	8 452	16 924	11 071	10 413	21 484	0.0	0.0	0.0	0.0	0.0	0.0
Frankfurt	"	0	0	0	0	0	0	278.3	1 102.8	1 381.1	1 781.6	1 460.5	3 242.1
Guangzhou	"	12 292	9 399	21 691	14 699	11 957	26 656	594.6	239.4	834.0	462.4	104.6	566.9
Hamilton	"	12 327	12 319	24 646	10 748	10 394	21 142	0.0	0.0	0.0	0.0	0.0	0.0
Hanoi	"	2 311	2 660	4 971	3 453	4 261	7 714	0.0	61.1	61.1	0.0	30.9	30.9
Ho Chi Minh City	"	19 882	19 973	39 855	29 992	28 378	58 370	557.5	192.1	749.6	879.0	236.1	1 115.1
Hong Kong	"	124 343	122 276	246 619	185 718	193 289	379 007	10 883.6	12 933.0	23 816.6	17 321.4	14 851.4	32 172.8

TABLE 5: SCHEDULED INTERNATIONAL TRAFFIC BY CITY PAIRS: Year ended December

Foreign Port	Australian Port	Passengers						Freight (tonnes)					
		2003			2004			2003			2004		
		Inbound	Outbound	Total	Inbound	Outbound	Total	Inbound	Outbound	Total	Inbound	Outbound	Total
Honiara	Melbourne	0	0	0	0	0	0	0.0	0.0	0.0	0.0	0.0	0.0
Honolulu	"	0	6 208	6 208	79	7 677	7 756	0.0	33.4	33.4	0.0	115.7	115.7
Jakarta	"	0	0	0	0	0	0	0.0	2.9	2.9	0.0	79.3	79.3
Karachi	"	0	0	0	0	0	0	0.0	20.1	20.1	0.0	0.0	0.0
Kuala Lumpur	"	123 003	121 367	244 370	148 108	144 842	292 950	11 924.2	8 052.2	19 976.4	12 724.7	5 375.8	18 100.5
Lahore	"	0	0	0	0	0	0	0.0	7.7	7.7	0.0	0.0	0.0
London	"	102 500	95 585	198 085	97 512	98 337	195 849	3 447.1	450.7	3 897.8	4 927.2	588.3	5 515.5
Los Angeles	"	130 844	127 071	257 915	140 801	131 085	271 886	2 232.1	3 919.5	6 151.5	2 960.4	4 123.4	7 083.7
Luxembourg	"	0	0	0	0	0	0	4 106.4	0.0	4 106.4	4 585.0	0.0	4 585.0
Manila	"	12 478	10 582	23 060	14 442	12 209	26 651	548.3	735.8	1 284.1	503.0	678.0	1 181.0
Mauritius	"	8 355	8 060	16 415	7 160	7 351	14 511	296.3	236.7	533.1	224.3	249.3	473.7
Nadi	"	37 882	36 990	74 872	48 076	49 392	97 468	751.7	1 083.2	1 835.0	982.7	1 115.1	2 097.8
Nauru	"	1 358	1 422	2 780	1 097	1 116	2 213	1.0	43.2	44.2	1.0	27.8	28.7
New Delhi	"	0	0	0	0	0	0	0.0	1.4	1.4	0.0	1.1	1.1
New York	"	176	268	444	1 969	2 268	4 237	81.5	0.0	81.5	24.2	0.0	24.2
Noumea	"	0	0	0	32	0	32	0.0	0.0	0.0	0.0	0.0	0.0
Palmerston	"	8 708	8 360	17 068	10 177	9 908	20 085	0.0	0.0	0.0	0.0	0.0	0.0
Penang	"	0	0	0	0	0	0	372.9	62.6	435.5	0.0	1.4	1.4
Phuket	"	0	1 140	1 140	0	13 583	13 583	0.0	0.4	0.4	0.0	89.4	89.4
Port Vila	"	0	0	0	1 007	1 704	2 711	0.0	0.0	0.0	0.0	0.0	0.0
Queenstown	"	0	0	0	1 258	1 428	2 686	0.0	0.0	0.0	0.0	0.0	0.0
Rome	"	5 566	0	5 566	0	0	0	326.7	0.0	326.7	0.0	0.0	0.0
Shanghai	"	8 243	7 060	15 303	27 958	20 948	48 906	22.5	26.8	49.4	732.2	263.2	995.4
Sharjah	"	0	0	0	0	0	0	0.0	17.1	17.1	1.5	1.0	2.5
Singapore	"	316 197	309 108	625 305	371 639	355 796	727 435	22 722.5	28 487.3	51 209.9	23 944.9	25 107.0	49 051.9
Tianjin	"	0	0	0	0	0	0	0.0	61.0	61.0	0.0	0.0	0.0
Tokyo	"	44 391	29 317	73 708	53 791	34 841	88 632	1 062.7	1 706.3	2 769.0	1 896.7	2 328.5	4 225.2
Vienna	"	21 948	23 937	45 885	28 071	28 018	56 089	0.0	0.0	0.0	0.0	0.0	0.0
Wellington	"	49 429	52 503	101 932	61 162	63 197	124 359	137.5	123.0	260.5	347.7	201.5	549.2
Total	Melbourne	1 620 653	1 578 881	3 199 534	1 993 040	1 943 395	3 936 435	90 962.4	88 695.2	179 657.6	108 764.3	85 476.7	194 240.9
Auckland	Norfolk Island	7 777	7 475	15 252	9 586	9 627	19 213	118.3	13.7	132.0	115.3	14.1	129.4
Total	Norfolk Island	7 777	7 475	15 252	9 586	9 627	19 213	118.3	13.7	132.0	115.3	14.1	129.4
Auckland	Perth	38 479	38 588	77 067	45 166	44 482	89 648	1 516.4	993.2	2 509.6	1 621.4	989.3	2 610.7
Bandar Seri Begawan	"	18 343	19 724	38 067	20 628	21 801	42 429	215.7	1 072.3	1 288.0	131.2	640.8	772.0
Bangkok	"	33 904	31 863	65 767	47 052	34 567	81 619	1 580.0	2 024.6	3 604.6	1 505.3	1 636.8	3 142.1
Chicago	"	0	0	0	0	0	0	0.0	0.0	0.0	0.0	0.0	0.0
Denpasar	"	68 404	70 667	139 071	106 510	106 887	213 397	117.5	221.7	339.2	148.9	294.9	443.8
Dubai	"	61 340	57 059	118 399	75 174	73 988	149 162	957.9	1 409.0	2 366.9	1 625.8	2 266.6	3 892.4
Hong Kong	"	34 148	32 168	66 316	53 657	47 442	101 099	1 102.9	2 677.3	3 780.1	2 372.5	2 770.7	5 143.2
Jakarta	"	12 138	15 383	27 521	14 710	15 060	29 770	61.9	538.4	600.4	101.3	336.8	438.1
Johannesburg	"	51 777	43 975	95 752	50 659	44 687	95 346	1 518.7	1 878.7	3 397.4	1 302.0	2 331.1	3 633.1
Kuala Lumpur	"	95 520	88 569	184 089	98 668	95 150	193 818	2 058.1	2 321.6	4 379.7	2 280.1	535.8	2 816.0
Kuching	"	5 077	4 920	9 997	7 124	7 431	14 555	0.6	261.6	262.2	0.7	124.5	125.2
London	"	45	0	45	5 446	3 794	9 240	0.0	0.0	0.0	94.8	22.3	117.1
Mauritius	"	6 349	6 660	13 009	6 895	6 892	13 787	45.2	246.9	292.1	121.6	285.6	407.1

TABLE 5: SCHEDULED INTERNATIONAL TRAFFIC BY CITY PAIRS: Year ended December

Foreign Port	Australian Port	Passengers						Freight (tonnes)					
		2003			2004			2003			2004		
		Inbound	Outbound	Total	Inbound	Outbound	Total	Inbound	Outbound	Total	Inbound	Outbound	Total
Paris	Perth	9 506	6 970	16 476	7 932	7 521	15 453	419.9	26.8	446.7	240.8	4.6	245.3
Phuket	"	7 616	8 535	16 151	0	12 153	12 153	0.0	80.0	80.0	0.0	76.8	76.8
Rome	"	2 119	0	2 119	0	0	0	207.0	0.0	207.0	0.0	0.0	0.0
Shanghai	"	0	0	0	0	0	0	0.0	0.0	0.0	0.0	5.7	5.7
Singapore	"	346 664	318 399	665 063	364 433	348 737	713 170	7 862.9	18 265.9	26 128.8	10 047.1	20 085.8	30 133.0
Tokyo	"	26 187	25 526	51 713	26 639	26 104	52 743	500.1	1 150.8	1 650.9	457.0	924.7	1 381.7
Total	Perth	817 616	769 006	1 586 622	930 693	896 696	1 827 389	18 164.8	33 168.8	51 333.6	22 050.5	33 332.8	55 383.3
Abu Dhabi	Sydney	0	0	0	0	0	0	0.0	42.8	42.8	0.0	0.0	0.0
Amsterdam	"	0	0	0	0	0	0	8 675.0	1 325.6	10 000.6	8 126.7	1 255.5	9 382.2
Apia	"	5 114	6 048	11 162	5 867	6 768	12 635	43.5	32.7	76.2	52.7	31.3	84.0
Athens	"	0	0	0	314	0	314	0.0	0.0	0.0	0.0	0.0	0.0
Atlanta	"	0	0	0	0	0	0	52.4	0.0	52.4	0.0	0.0	0.0
Auckland	"	556 831	580 705	1 137 536	623 932	633 806	1 257 738	22 948.3	28 517.8	51 466.1	25 542.8	31 597.9	57 140.7
Bahrain	"	2 969	4 923	7 892	49 298	52 000	101 298	79.0	80.5	159.5	1 465.9	1 371.0	2 836.9
Bandar Seri Begawan	"	0	0	0	2 333	2 549	4 882	0.0	0.0	0.0	161.0	93.5	254.5
Bangkok	"	220 349	223 290	443 639	237 751	234 544	472 295	7 031.6	4 580.6	11 612.3	6 971.6	4 073.2	11 044.8
Beijing	"	21 810	23 888	45 698	22 158	25 065	47 223	221.5	357.6	579.1	185.7	264.2	449.8
Bombay	"	0	0	0	13 269	14 269	27 538	0.0	0.0	0.0	254.1	40.3	294.4
Buenos Aires	"	14 470	14 763	29 233	16 144	16 072	32 216	80.8	156.4	237.2	95.8	183.1	278.9
Chicago	"	7 138	6 975	14 113	10 598	9 950	20 548	204.4	0.0	204.4	1 159.2	0.0	1 159.3
Christchurch	"	219 577	224 445	444 022	257 047	256 734	513 781	5 173.4	5 208.4	10 381.8	5 517.7	5 993.1	11 510.8
Denpasar	"	59 688	63 702	123 390	97 699	99 202	196 901	1 564.4	1 159.5	2 723.8	2 215.1	1 048.9	3 264.0
Dubai	"	71 944	73 211	145 155	60 616	56 763	117 379	2 651.8	2 653.9	5 305.7	2 705.9	2 978.3	5 684.1
Dunedin	"	8 949	8 879	17 828	11 602	11 413	23 015	0.0	0.0	0.0	0.0	0.0	0.0
Frankfurt	"	42 910	38 452	81 362	39 454	39 023	78 477	1 894.1	199.4	2 093.5	2 170.9	187.4	2 358.3
Guangzhou	"	26 011	26 786	52 797	35 019	37 425	72 444	1 507.6	167.8	1 675.4	1 850.7	109.3	1 960.0
Hamilton	"	11 518	11 398	22 916	10 605	10 685	21 290	0.0	0.0	0.0	0.0	0.0	0.0
Hanoi	"	0	2 933	2 933	722	6 700	7 422	0.0	0.0	0.0	0.0	0.0	0.0
Ho Chi Minh City	"	0	16 379	16 379	5 172	35 310	40 482	0.0	122.2	122.2	233.0	189.5	422.5
Hong Kong	"	259 136	244 918	504 054	306 679	298 307	604 986	17 569.6	12 400.7	29 970.3	24 014.0	10 133.4	34 147.4
Honolulu	"	65 358	53 006	118 364	91 595	77 912	169 507	2 395.9	2 826.3	5 222.2	3 509.1	3 799.1	7 308.2
Jakarta	"	35 488	36 128	71 616	39 999	38 921	78 920	416.5	1 053.9	1 470.4	623.6	1 240.3	1 863.8
Johannesburg	"	66 144	60 054	126 198	61 043	55 561	116 604	1 285.2	335.7	1 620.9	1 457.9	575.5	2 033.4
Kota Kinabalu	"	4 268	4 830	9 098	15 851	16 048	31 899	183.6	70.9	254.5	190.0	186.3	376.3
Kuala Lumpur	"	151 941	141 369	293 310	160 936	155 829	316 765	11 947.0	3 275.1	15 222.1	12 939.8	2 002.5	14 942.2
Kuching	"	0	0	0	0	511	511	0.0	0.0	0.0	0.0	0.0	0.0
London	"	188 707	198 741	387 448	202 173	206 709	408 882	5 956.2	1 622.8	7 578.9	8 164.1	1 868.7	10 032.8
Los Angeles	"	302 689	309 663	612 352	304 111	318 271	622 382	18 255.7	3 961.9	22 217.6	21 304.8	4 147.2	25 452.0
Louisville	"	0	0	0	0	0	0	4 685.5	0.0	4 685.5	4 613.1	0.0	4 613.1
Luzon Island	"	0	0	0	0	0	0	0.0	202.7	202.7	0.0	2.6	2.6
Macau	"	0	0	0	0	0	0	0.0	0.0	0.0	0.0	83.0	83.0
Manchester (US)	"	0	0	0	0	5	5	0.0	0.0	0.0	0.0	0.0	0.0
Manila	"	50 516	51 707	102 223	57 515	57 534	115 049	1 643.4	903.9	2 547.3	1 655.2	568.8	2 224.1
Mauritius	"	0	0	0	5 107	4 299	9 406	0.0	0.0	0.0	89.0	84.6	173.6
Miami	"	0	0	0	0	0	0	0.0	0.0	0.0	75.5	0.0	75.5

TABLE 5: SCHEDULED INTERNATIONAL TRAFFIC BY CITY PAIRS: Year ended December

Foreign Port	Australian Port	Passengers						Freight (tonnes)					
		2003			2004			2003			2004		
		Inbound	Outbound	Total	Inbound	Outbound	Total	Inbound	Outbound	Total	Inbound	Outbound	Total
Nadi	Sydney	109 782	107 103	216 885	114 474	113 084	227 558	2 309.5	2 559.2	4 868.6	3 127.7	2 412.4	5 540.1
Nagoya	"	3 755	5 252	9 007	9 034	11 200	20 234	293.9	136.1	430.0	562.3	245.2	807.5
New York	"	19 078	19 462	38 540	18 822	21 031	39 853	1 033.8	155.4	1 189.2	2 600.5	130.8	2 731.3
Niue	"	96	0	96	0	17	17	0.9	0.0	0.9	0.0	0.0	0.0
Noumea	"	41 649	39 082	80 731	44 916	42 042	86 958	30.2	609.5	639.7	38.1	655.7	693.8
Osaka	"	37 894	90 799	128 693	38 472	93 371	131 843	1 160.2	2 108.9	3 269.2	1 523.4	2 069.9	3 593.3
Palmerston	"	8 829	8 697	17 526	9 344	8 934	18 278	0.0	0.0	0.0	0.0	0.0	0.0
Papeete	"	0	380	380	0	0	0	0.0	1.2	1.2	0.0	0.0	0.0
Paris	"	126	7	133	0	0	0	0.0	1.7	1.7	0.0	0.0	0.0
Phuket	"	0	777	777	40	7 029	7 069	0.0	0.0	0.0	0.0	0.0	0.0
Port Moresby	"	10 724	11 507	22 231	8 864	10 225	19 089	242.0	194.5	436.6	530.7	266.8	797.5
Port Vila	"	17 882	17 795	35 677	19 920	19 138	39 058	59.7	180.3	240.0	75.8	184.2	260.1
Queenstown	"	6 585	7 534	14 119	7 710	9 572	17 282	0.0	0.0	0.1	0.0	0.0	0.1
Rome	"	528	1 176	1 704	0	0	0	9.0	5.6	14.6	0.0	0.0	0.0
San Francisco	"	84 718	90 126	174 844	94 133	97 142	191 275	985.5	2 688.3	3 673.8	842.4	2 366.3	3 208.7
Santiago	"	18 866	19 214	38 080	19 674	20 412	40 086	859.9	284.4	1 144.3	910.7	435.3	1 346.0
Sapporo	"	0	0	0	0	0	0	0.0	25.0	25.0	0.0	47.9	47.9
Seattle	"	0	0	0	624	709	1 333	0.0	0.0	0.0	0.0	0.0	0.0
Seoul	"	170 849	164 814	335 663	177 186	177 439	354 625	6 642.4	8 767.8	15 410.2	16 009.0	7 939.7	23 948.7
Shanghai	"	47 404	47 111	94 515	68 791	69 047	137 838	2 386.1	316.6	2 702.7	5 018.1	426.5	5 444.7
Shannon	"	0	0	0	0	0	0	0.0	25.7	25.7	0.0	0.0	0.0
Sharjah	"	0	0	0	0	0	0	0.0	78.1	78.1	0.0	51.6	51.6
Singapore	"	477 467	439 900	917 367	498 545	469 756	968 301	27 045.1	16 234.0	43 279.1	26 813.8	14 096.1	40 909.8
Subic Bay	"	0	0	0	0	0	0	0.0	6 765.7	6 765.7	0.0	5 409.6	5 409.6
Suva	"	7 824	10 943	18 767	7 452	11 041	18 493	0.9	14.0	14.9	0.4	19.6	20.1
Taipei	"	54 480	52 778	107 258	56 897	57 233	114 130	1 809.1	2 138.3	3 947.4	1 934.6	1 372.3	3 306.8
Tianjin	"	0	0	0	0	0	0	0.0	57.4	57.4	0.0	0.0	0.0
Tokyo	"	199 331	222 469	421 800	221 860	235 845	457 705	4 324.7	5 642.8	9 967.5	5 267.6	7 232.0	12 499.6
Toledo	"	0	0	0	0	0	0	80.3	0.0	80.3	332.9	0.0	332.9
Tongatapu	"	2 064	2 301	4 365	2 758	2 368	5 126	26.4	11.2	37.5	21.0	17.1	38.1
Vancouver	"	43 968	49 114	93 082	50 533	54 170	104 703	324.4	309.7	634.1	283.1	56.7	339.8
Vienna	"	56 456	59 114	115 570	63 000	63 876	126 876	0.0	0.0	0.0	0.0	0.0	0.0
Wellington	"	108 457	112 856	221 313	148 204	153 097	301 301	351.1	149.9	501.0	509.9	312.3	822.2
Total	Sydney	3 922 337	4 007 504	7 929 841	4 425 862	4 525 963	8 951 825	166 441.3	120 720.4	287 161.7	203 747.2	119 856.4	323 603.6
Abu Dhabi	Australia	0	0	0	0	0	0	0.0	42.8	42.8	0.0	0.0	0.0
Amsterdam	"	0	0	0	0	0	0	8 788.4	1 329.8	10 118.2	8 126.7	1 255.5	9 382.2
Apia	"	5 114	6 048	11 162	5 867	6 768	12 635	43.5	32.7	76.2	52.7	31.3	84.0
Athens	"	0	0	0	314	0	314	0.0	0.0	0.0	0.0	0.0	0.0
Atlanta	"	0	0	0	0	0	0	931.8	0.0	931.8	385.3	0.0	385.3
Auckland	"	1 186 699	1 219 163	2 405 862	1 387 856	1 417 256	2 805 112	47 837.6	54 082.9	101 920.6	53 389.2	57 985.4	111 374.5
Bahrain	"	2 969	4 923	7 892	49 298	52 000	101 298	79.0	80.5	159.5	1 465.9	1 371.0	2 836.9
Bandar Seri Begawan	"	47 133	50 675	97 808	49 468	52 629	102 097	1 156.2	2 546.6	3 702.8	935.8	1 772.7	2 708.5
Bangkok	"	379 400	378 241	757 641	431 580	400 811	832 391	14 439.4	13 226.5	27 665.9	14 451.3	11 754.6	26 205.9
Beijing	"	31 224	29 091	60 315	33 718	33 038	66 756	391.4	552.0	943.4	261.8	439.3	701.2
Bombay	"	0	0	0	13 274	14 269	27 543	0.0	0.0	0.0	254.1	40.3	294.4

TABLE 5: SCHEDULED INTERNATIONAL TRAFFIC BY CITY PAIRS: Year ended December

Foreign Port	Australian Port	Passengers						Freight (tonnes)					
		2003			2004			2003			2004		
		Inbound	Outbound	Total	Inbound	Outbound	Total	Inbound	Outbound	Total	Inbound	Outbound	Total
Buenos Aires	Australia	14 470	14 763	29 233	16 144	16 072	32 216	80.8	156.4	237.2	95.8	183.1	278.9
Chicago	"	9 187	9 500	18 687	10 598	9 950	20 548	4 390.7	0.0	4 390.7	6 377.8	613.9	6 991.7
Christchurch	"	386 321	387 963	774 284	520 386	522 235	1 042 621	7 203.8	6 873.4	14 077.3	7 281.1	6 898.0	14 179.1
Denpasar	"	205 017	212 759	417 776	337 712	341 924	679 636	3 582.5	3 539.9	7 122.4	5 125.3	3 253.6	8 379.0
Dubai	"	217 658	211 677	429 335	288 545	282 080	570 625	5 660.5	8 482.2	14 142.7	8 689.7	10 122.4	18 812.1
Dunedin	"	39 322	39 433	78 755	44 655	44 600	89 255	0.0	0.0	0.0	0.0	0.0	0.0
Frankfurt	"	42 910	38 452	81 362	39 454	39 023	78 477	2 172.4	1 302.2	3 474.6	3 952.5	1 648.0	5 600.5
Fukuoka	"	17 159	18 949	36 108	24 859	25 018	49 877	25.1	330.1	355.2	45.3	311.8	357.0
Guam	"	12 363	12 830	25 193	13 405	13 967	27 372	0.3	37.5	37.8	0.7	38.1	38.8
Guangzhou	"	38 303	36 185	74 488	49 718	49 382	99 100	2 102.2	407.2	2 509.4	2 313.0	213.9	2 526.9
Hamilton	"	54 012	54 370	108 382	52 309	52 405	104 714	0.0	0.0	0.0	0.0	0.0	0.0
Hanoi	"	2 311	5 593	7 904	4 175	10 961	15 136	0.0	61.1	61.1	0.0	30.9	30.9
Ho Chi Minh City	"	19 882	36 352	56 234	35 164	63 688	98 852	557.5	314.3	871.8	1 112.0	425.6	1 537.6
Hong Kong	"	518 588	487 940	1 006 528	692 294	665 946	1 358 240	33 383.6	35 520.6	68 904.2	49 841.6	34 323.2	84 164.8
Honiara	"	9 002	9 069	18 071	12 567	12 970	25 537	97.5	72.9	170.3	159.4	44.9	204.3
Honolulu	"	65 360	59 214	124 574	91 674	85 589	177 263	2 395.9	2 859.7	5 255.6	3 509.1	3 914.8	7 423.9
Jakarta	"	47 626	51 511	99 137	54 709	53 981	108 690	478.4	1 595.2	2 073.6	724.9	1 656.9	2 381.7
Johannesburg	"	117 921	104 029	221 950	111 702	100 248	211 950	2 803.9	2 214.4	5 018.3	2 759.9	2 906.6	5 666.5
Karachi	"	0	0	0	0	0	0	0.0	20.1	20.1	0.0	0.0	0.0
Kota Kinabalu	"	4 474	5 147	9 621	16 267	16 374	32 641	189.8	141.2	331.0	190.0	186.3	376.3
Kuala Lumpur	"	457 023	432 211	889 234	505 602	493 968	999 570	29 347.6	15 898.8	45 246.3	31 405.6	10 196.2	41 601.8
Kuching	"	5 077	4 920	9 997	7 124	7 942	15 066	0.6	261.6	262.2	0.7	124.5	125.2
Kupang	"	0	0	0	619	895	1 514	0.0	0.0	0.0	0.0	0.0	0.0
Lahore	"	0	0	0	0	0	0	0.0	7.7	7.7	0.0	0.0	0.0
London	"	291 261	294 326	585 587	305 131	308 840	613 971	9 403.3	2 073.5	11 476.7	13 186.1	2 479.3	15 665.4
Los Angeles	"	473 174	476 510	949 684	506 381	510 073	1 016 454	21 242.1	8 348.1	29 590.2	25 372.5	8 981.6	34 354.1
Louisville	"	0	0	0	0	0	0	4 685.5	0.0	4 685.5	4 613.1	0.0	4 613.1
Luxembourg	"	0	0	0	0	0	0	4 106.4	0.0	4 106.4	4 585.0	0.0	4 585.0
Luzon Island	"	0	0	0	0	0	0	0.0	202.7	202.7	0.0	2.6	2.6
Macau	"	0	0	0	0	0	0	0.0	0.0	0.0	0.0	83.0	83.0
Manchester (US)	"	0	0	0	0	5	5	0.0	0.0	0.0	0.0	0.0	0.0
Manila	"	69 382	68 064	137 446	80 901	78 364	159 265	2 203.6	1 688.7	3 892.2	2 165.1	1 355.1	3 520.2
Mauritius	"	14 704	14 720	29 424	19 162	18 542	37 704	341.6	483.6	825.2	434.9	619.5	1 054.4
Miami	"	0	0	0	0	0	0	0.0	0.0	0.0	75.5	0.0	75.5
Nadi	"	182 483	178 476	360 959	211 938	212 171	424 109	3 217.4	3 993.0	7 210.4	4 340.4	4 013.1	8 353.5
Nagoya	"	71 489	71 733	143 222	79 135	78 210	157 345	531.7	1 489.1	2 020.7	695.5	1 125.8	1 821.3
Nauru	"	5 652	5 311	10 963	4 892	4 507	9 399	35.8	255.8	291.6	12.5	203.4	215.9
New Delhi	"	0	0	0	0	0	0	0.0	1.4	1.4	0.0	1.1	1.1
New York	"	19 263	19 730	38 993	20 811	23 299	44 110	1 115.3	155.4	1 270.7	2 624.8	130.8	2 755.5
Niue	"	96	0	96	0	17	17	0.9	0.0	0.9	0.0	0.0	0.0
Noumea	"	57 875	56 730	114 605	62 482	60 857	123 339	40.1	763.5	803.6	68.8	807.2	876.0
Osaka	"	177 234	168 606	345 840	191 810	183 347	375 157	2 779.6	4 853.5	7 633.0	3 201.5	5 219.7	8 421.2
Palmerston	"	36 227	35 388	71 615	40 367	39 436	79 803	0.0	0.0	0.0	0.0	0.0	0.0
Papeete	"	0	380	380	0	0	0	0.0	1.2	1.2	0.0	0.0	0.0
Paris	"	9 632	6 977	16 609	7 932	7 521	15 453	419.9	28.5	448.5	240.8	4.6	245.3

TABLE 5: SCHEDULED INTERNATIONAL TRAFFIC BY CITY PAIRS: Year ended December

Foreign Port	Australian Port	Passengers						Freight (tonnes)					
		2003			2004			2003			2004		
		Inbound	Outbound	Total	Inbound	Outbound	Total	Inbound	Outbound	Total	Inbound	Outbound	Total
Penang	Australia	0	0	0	0	0	0	372.9	62.6	435.5	0.0	1.4	1.4
Phuket	"	7 616	10 452	18 068	40	32 765	32 805	0.0	80.4	80.4	0.0	166.2	166.2
Port Moresby	"	62 967	64 164	127 131	65 578	67 445	133 023	1 190.3	2 093.9	3 284.2	2 241.2	2 912.2	5 153.4
Port Vila	"	28 493	28 331	56 824	34 440	34 198	68 638	102.2	309.4	411.6	100.7	317.2	417.9
Queenstown	"	8 842	10 160	19 002	11 296	13 670	24 966	0.0	0.0	0.1	0.0	0.0	0.1
Rome	"	8 213	5 783	13 996	0	0	0	542.6	18.1	560.7	0.0	0.0	0.0
San Francisco	"	84 718	90 126	174 844	94 133	97 142	191 275	985.5	2 688.3	3 673.8	842.4	2 366.3	3 208.7
Santiago	"	18 866	19 214	38 080	19 674	20 412	40 086	859.9	284.4	1 144.3	910.7	435.3	1 346.0
Sapporo	"	0	0	0	3 140	2 900	6 040	0.0	25.0	25.0	0.8	49.2	50.0
Seattle	"	0	0	0	624	709	1 333	0.0	0.0	0.0	0.0	0.0	0.0
Seoul	"	201 577	190 136	391 713	212 189	204 625	416 814	7 048.7	10 139.4	17 188.1	16 825.2	9 531.8	26 357.1
Shanghai	"	55 647	54 171	109 818	96 924	90 170	187 094	2 408.6	343.4	2 752.0	5 750.3	695.5	6 445.8
Shannon	"	0	0	0	0	0	0	0.0	25.7	25.7	0.0	0.0	0.0
Sharjah	"	0	0	0	0	0	0	0.0	95.2	95.2	1.5	52.5	54.1
Singapore	"	1 513 057	1 440 562	2 953 619	1 677 277	1 614 621	3 291 898	68 832.5	79 865.2	148 697.8	75 184.8	75 156.1	150 340.9
Subic Bay	"	0	0	0	0	0	0	0.0	6 765.7	6 765.7	0.0	5 409.6	5 409.6
Suva	"	7 824	10 943	18 767	7 452	11 041	18 493	0.9	14.0	14.9	0.4	19.6	20.1
Taipei	"	87 800	87 284	175 084	101 855	102 273	204 128	3 295.0	3 202.4	6 497.4	4 116.8	2 286.4	6 403.2
Tianjin	"	0	0	0	0	0	0	0.0	118.4	118.4	0.0	0.0	0.0
Tokyo	"	505 970	513 667	1 019 637	550 661	549 056	1 099 717	8 791.7	14 526.0	23 317.7	11 422.1	16 298.7	27 720.8
Toledo	"	0	0	0	0	0	0	80.3	0.0	80.3	332.9	0.0	332.9
Tongatapu	"	2 064	2 301	4 365	2 758	2 368	5 126	26.4	11.2	37.5	21.0	17.1	38.1
Vancouver	"	43 968	49 114	93 082	50 533	54 170	104 703	324.4	309.7	634.1	283.1	56.7	339.8
Vienna	"	78 404	83 051	161 455	91 071	91 894	182 965	0.0	0.0	0.0	0.0	0.0	0.0
Wellington	"	202 107	210 183	412 290	255 929	262 840	518 769	493.6	285.3	778.9	864.8	529.3	1 394.1
Total	Australia	8 263 130	8 187 601	16 450 731	9 707 573	9 663 477	19 371 050	313 618.9	297 591.5	611 210.4	383 422.8	293 070.4	676 493.2

Please refer to explanatory notes - paragraphs 3, 8 and 13 in particular.

**TABLE 6 : INTERNATIONAL AIRLINES OWN STOPOVER REVENUE PASSENGERS,
AUSTRALIAN CITY PAIRS
YEAR ENDED DECEMBER 2004**

City Pair Route	Total Passengers
Brisbane/Sydney	43 011
Melbourne/Sydney	38 423
Brisbane/Cairns	1 592
Adelaide/Melbourne	202
TOTAL	83 228

Notes:

1. Own Stopover Revenue Passengers : The aggregate of revenue passengers uplifted at one Australian airport and discharged (excluding transit passengers) at another Australian airport by the same foreign registered international airline on which they entered or left Australia.
2. City Pair Route represents the aggregation of passengers travelling in both directions.
3. This data are supplementary to the information previously supplied to the Department by most international airlines. Tables 1-5 cover only those passengers travelling to/from overseas airports. The inclusion of this additional data provides a more complete coverage of international airline activity.

TABLE 7: TOTAL AIRCRAFT MOVEMENTS AT AUSTRALIAN INTERNATIONAL AIRPORTS BY AIRCRAFT TYPES: Year ended December 2004

Airport	Aircraft Types																						
	Passenger/Mixed																	Freighters					
	AB3	310	32S	330	340	737	747	74M	757	767	777	M11	100	F28	146	EM2	DH8	72F	74F	76F	M1F	D1F	All Types
Adelaide	10	76		448	2	106	4			398	836								110				1 990
Brisbane		18	373	2 144	230	6 606	5 288	2	4	2 759	3 052	554	8										21 038
Cairns		185	54	422		312	81			6 821			284	282	251		2						8 694
Canberra						42																	42
Darwin		16	293	42		416	4			858						116			8				1 753
Gold Coast/Coolangatta			2			1 186				732													1 920
Melbourne	398	48	2 919	2 417	988	3 066	5 994			4 560	4 533	428							905		413	12	26 681
Norfolk Island						208							0										208
Perth	16	308	90	1 215	933	1 333	1 020		116	2 429	2 042								22				9 524
Sydney	374	42	5 068	2 360	4 825	5 020	20 262		0	11 897	3 681	44						424	1 550	91	478		56 116
Australia	798	693	8 799	9 048	6 978	18 295	32 653	2	120	30 454	14 144	1 026	292	282	251	116	2	424	2 595	91	891	12	127 966

% of All Types	0.6	0.5	6.9	7.1	5.5	14.3	25.5	0.0	0.1	23.8	11.1	0.8	0.2	0.2	0.2	0.1	0.0	0.3	2.0	0.1	0.7	0.0	100.0
----------------	-----	-----	-----	-----	-----	------	------	-----	-----	------	------	-----	-----	-----	-----	-----	-----	-----	-----	-----	-----	-----	-------

NOTE:

These figures only cover scheduled operations of the airlines listed in this publication. Charter/ferry operations are not included.

These figures are available electronically for January 2001 onwards. Prior to this, aircraft type data is not readily accessible.

Aircraft Types (all series)

Airbus	AB3	310	32S	330	340																		
Boeing	737	747	74M	757	767	777	72F	74F	76F														
McDonnell Douglas	M11	M1F	D1F																				
Fokker	F28	100																					
BAE	146																						
de Havilland	DH8																						
Embraer	EM2																						