



DEPARTMENT OF TRANSPORT AND REGIONAL SERVICES

# AIR TRANSPORT STATISTICS

## INTERNATIONAL AIRLINES

2001





# **INTERNATIONAL SCHEDULED AIR TRANSPORT**

**2001**

**BUREAU OF  
TRANSPORT AND REGIONAL ECONOMICS**

**DEPARTMENT OF  
TRANSPORT AND REGIONAL SERVICES**

**Issue Number 1/113**

© COMMONWEALTH OF AUSTRALIA

CANBERRA

JUNE 2002

ISSN 0727-2790

**This work is copyright and the data contained in this publication should not be reproduced or used in any form without acknowledgment.**

**INQUIRIES**

Should you require additional information about the statistics contained in this publication, please contact Mrs Betty Kell in Canberra by telephone (02) 6274 7791 or by facsimile (02) 6274 7727

or write to:

AVSTATS, Bureau of Transport and Regional Economics  
Department of Transport and Regional Services  
GPO Box 594  
Canberra ACT 2601  
Electronic Mail: AVSTATS@dotars.gov.au

**CONTENTS**

Table		Page
..	Explanatory Notes .....	iv-v
..	Data Status & Airlines Commencing/Withdrawing Services .....	vi
..	Industry Analysis .....	vii-xi
..	Summary .....	xii
1	Scheduled International Air Traffic to and from Australia .....	1-3
2	Scheduled Operator Market Shares and Growth .....	4-8
3	Airline Passenger Capacity and Utilisation to and from Australia by Operator .....	9-11
4	Australian International Airport Scheduled Traffic and Aircraft Movements .....	12-13
5	Scheduled International Passengers and Freight by City Pairs .....	14-24
6	International Airlines Own Stopover Revenue Passengers, Australian City Pairs .....	25
7	Total Aircraft Movements at Australian International Airports by Aircraft Types .....	26

## EXPLANATORY NOTES

### INTRODUCTION

1. This publication continues the series of publications on a calendar year basis presenting statistical information on the scheduled operations of international airlines operating into/out of Australia.
2. The figures in this publication were obtained from reports submitted by scheduled international carriers and are the best available at the time of publication.

### COVERAGE

3. These statistics show **uplift/discharge** data – These data detail, by direction, the revenue traffic between the actual points of uplift and discharge within each flight, aggregated for all flights within the period. It shows the movement of traffic between two airports not necessarily directly connected but within the same flight number. Typically, flight numbers change when an aircraft reaches its home country. This means that uplift/discharge data for the port in the operator's home country are likely to be overstated by traffic whose origin/destination point is beyond that port. For example, uplift/discharge traffic reported in this publication as Singapore could include traffic whose origin/destination is Europe.
4. These statistics cover **revenue** traffic carried by the operators of scheduled regular public international air transport services only and **do not include charter traffic**.
5. Some airlines (generally, dedicated freighter operators) operate scheduled services into Australia but operate non-scheduled services out of Australia and therefore outbound activity is not recorded in this data collection.

### PRODUCTION AND INTERPRETATION

6. **Tables 1 and 2** show the country of the relevant uplift or discharge port served by that airline. For example, traffic uplifted/discharged between Sydney and Singapore by British Airways would be shown as Singapore traffic in Tables 1 and 2.
7. **Table 3** shows figures for the country of service (or route) for each airline and therefore may not equate to the data in Tables 1 and 2. For example, the British Airways UK service identified in Table 3 could include passengers uplifted or discharged in Singapore or Thailand as well as the UK; these passengers would be shown individually under those countries in Tables 1 and 2. The difference in treatment of data between Tables 1 and 2 and Table 3 is necessary in order to work out a meaningful Seat Utilisation figure for Table 3.

Figures shown in Table 3 may include **total traffic** into and out of Australia for airlines that fly through Australia (also necessary in order to work out a meaningful Seat Utilisation figure). Therefore, figures in Table 3 may not equate to figures in Tables 1 and 2. For example, passengers carried by Qantas Airways from New Zealand **via** Australia to the UK will be included in Table 3 but will not be included in Tables 1 or 2 as these passengers were not uplifted/discharged in Australia.

8. **Table 5** – shows uplift/discharge passenger and freight data for directly connected city pairs. Statistics reported in this table for city pairs without direct international flight connections, mainly reflect carriage on interconnecting international services by Qantas Airways. This traffic should be interpreted as increasing the volume of traffic between the primary international ports rather than as an indicator of traffic volumes between ports without direct international flight connections. It should be noted however, that there is no double counting of traffic. For example, there is no direct connection between Adelaide and London and the traffic reported between Adelaide and London should be interpreted as adding to traffic between Adelaide and Singapore or Melbourne/Sydney and London.
9. Where figures have been rounded, discrepancies may occur between sums of component items and totals, and in percentage changes which are derived from figures prior to rounding.
10. Published figures may be revised where figures missing at the time of publication are received or misreporting/miscalculation necessitates revisions.

## 11. Reporting of Code Share services:

Reporting of traffic split by airline code for code share arrangements was discontinued as of June 2000. From July 2000, ALL traffic carried is reported under the operating airline regardless of code share arrangements.

Monthly airline market share figures for July 2001 onwards will be comparable with the same month in the previous year. However, these figures may not be comparable with monthly data prior to July 2000.

## DEFINITIONS

### 12. The following definitions have been used in this publication:

- (a) Aircraft Movement: A landing or a take off.
- (b) Freight: The aggregate of all revenue freight uplifted.
- (c) Inbound: Inbound to Australia/Australian international airport.
- (d) Mail: The aggregate of all mail uplifted.
- (e) Outbound: Outbound from Australia/Australian international airport.
- (f) Revenue Passengers:

From July 2000 onwards: All passengers paying any fare (frequent flyer redemption passengers are regarded as revenue passengers). In most cases, Revenue Passengers will now include all passengers excluding Free Of Charge passengers and positioning crew.

To December 1999: The aggregate of all passengers paying 25% or more of the standard air fare (as defined by ICAO).

January 2000 to June 2000: Transition period.

The Revenue Passenger definition change could result in approximately a three per cent increase in passenger numbers over a full period (month or year).

- (g) Seat Utilisation: The ratio of passengers carried to seats available, expressed as a percentage.
- (h) Seats Available: Generally based on standard aircraft configuration, the aggregate of seats available on all flights operated over a particular service.
- (i) Services: Scheduled flights over authorised routes which are listed according to the main ports involved.

## SYMBOLS AND OTHER USAGE

- nil or zero
- .. not applicable

## INDEMNITY STATEMENT

The Bureau of Transport and Regional Economics has taken due care in preparing the information contained in this publication. However, noting that data have been provided by third parties, the Commonwealth gives no warranty as to the accuracy, reliability, fitness for purpose, or otherwise of the information.

## **NO/INCOMPLETE DATA FOR 2001 PROVIDED BY THE FOLLOWING AIRLINES PRIOR TO FINALISATION OF THIS PUBLICATION**

<b>Lauda Air</b>	No outbound freight data for September 2000 onwards. No inbound freight data for April 2001 onwards.
<b>Merpati Nusantara Airlines</b>	No data for August 2001 onwards.
<b>Solomon Airlines</b>	Latest data received is for June 2001.

## **AIRLINES COMMENCING/WITHDRAWING SERVICES DURING 2001**

- The following airlines commenced services to/from Australia
  - Air Canada (took over Canadian Airlines International's operations)
  - Lufthansa German Airlines (freight services in own right)
  
- The following airlines ceased services to/from Australia
  - Ansett International
  - Canadian Airlines International (operations taken over by Air Canada)
  - KLM Royal Dutch Airlines
  - SriLankan Airlines



# INTERNATIONAL AVIATION INDUSTRY ANALYSIS

## YEAR ENDED DECEMBER 2001

- The year ended December 2001 saw an increase of 1.8%\* in the number of revenue passengers carried and a decrease of 5.9% in freight carried on international scheduled air services to and from Australia when compared with the previous year.

### Passenger Traffic

- Chart I shows total passenger traffic for the years 1991 to 2001.
- Strong year on year growth has been recorded over this period except for 1998 and 2001.
- Passenger traffic in 1998 was affected by the Asian economic crisis and year on year growth dropped to 1.2%.
- Passenger traffic in 2001 was affected by the terrorist attacks on the USA in September and the war on terrorism that followed.
- The collapse of Ansett International (also in September) has also affected traffic levels in 2001. In the year ended August 2001 (last full year of operations), it carried 559,756 passengers (3.2% of the total) on 2,961 flights with 823,825 seats made available.
- Chart II shows total passenger traffic by month for 1999, 2000 and 2001.
- Monthly passenger traffic for September to December 2001 was below levels in 2000 with October and November being even below 1999 levels. The September to December 2001 period recorded a decrease of 9.0% compared to the same period in 2000 – note that this period was affected by Olympics and related effects in 2000.
- Chart III shows the passenger market shares for the top ten airlines for 2001. The top ten airlines accounted for 81.9% of the total market. Singapore Airlines has replaced Air New Zealand as the second largest carrier. The Australian airline market share was 37.0%.
- Table I shows total passenger traffic carried by uplift/discharge city pairs for 1999, 2000 and 2001.
- Table III provides a breakdown of passenger traffic by major uplift/discharge countries for 1999, 2000 and 2001.
- Table IV provides a breakdown of passenger traffic through Australian international airports for 1999, 2000 and 2001.

### Airline Operations

- During 2001, 50 international scheduled airlines operated services to/from Australia of which 8 were dedicated freight only operators (airlines operating only via code share arrangements have been excluded). This compares to 54 international scheduled airlines and 8 dedicated freight only operators in 2000.
- Total flights operated have increased from 82.6 thousand in 1999 to 91.2 thousand in 2000 and to 92.0 thousand in 2001.
- Total seats made available have increased from 21.9 million in 1999 to 23.9 million in 2000 and to 24.1 million in 2001. In 2001, the January to August 2001 period recorded an increase of 4.6% compared to the same period in 2000 while the September to December 2001 period recorded a decrease of 6.2% compared to the same period in 2000.

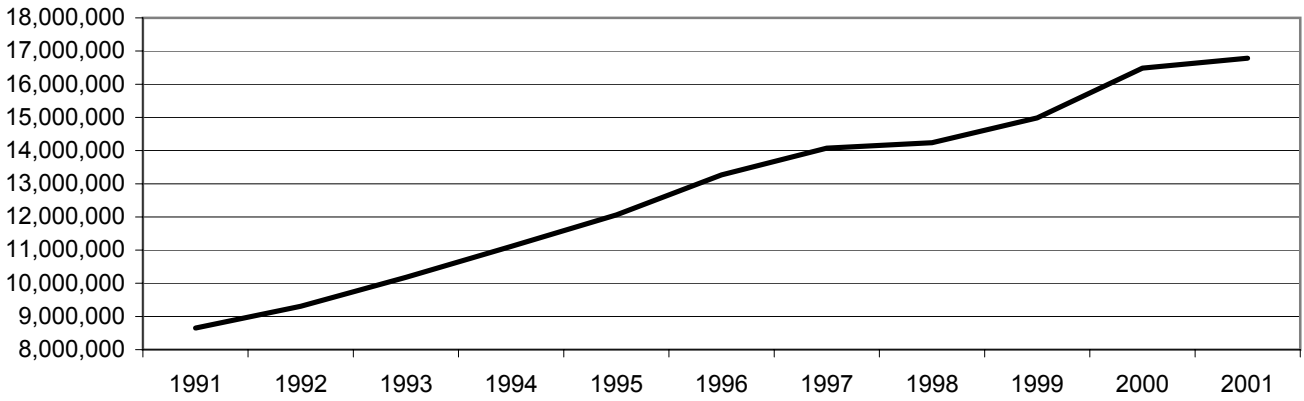
- Overall seat utilisation percentage (load factor) was 70.9% in 2001. Despite the reduction in capacity for the September to December 2001 period, load factor was down to 71.9% compared to 73.8% for the same period in 2000.
- The Boeing 747 (including Combi) was the most popular aircraft type operated to and from Australia, accounting for 33.5% of total aircraft movements in 2001. This was followed by the Boeing 767 with 24.8%, the Boeing 737 with 15.6% and the Boeing 777 with 10.4%. All Airbus types accounted for a total of 9.9% and the McDonnell Douglas MD11 accounted for 1.4%.

## **Freight**

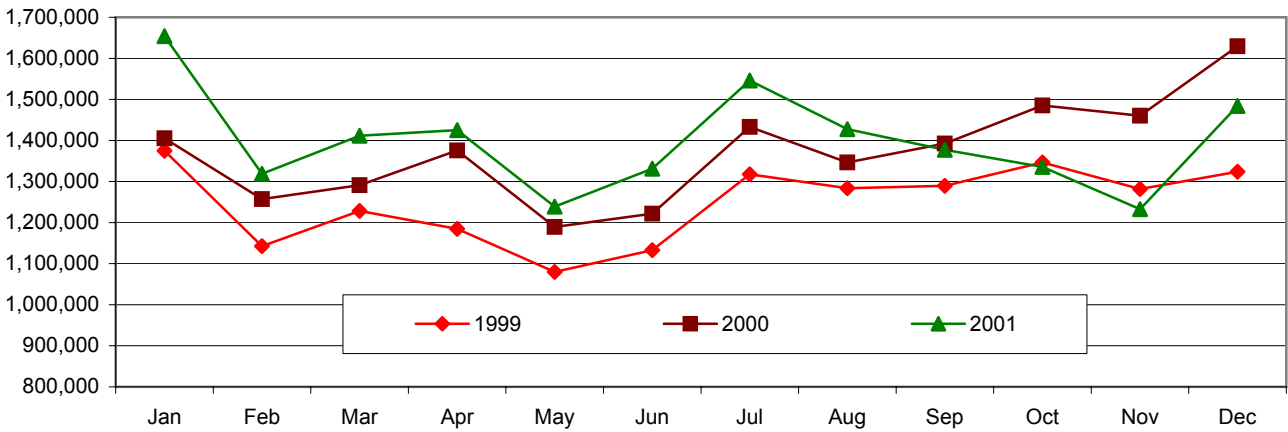
- The average annual growth for total freight was 5.9% over the last ten years (inbound 5.4% and outbound 6.4%).
- Asian Express Airlines, Cargolux Airlines International, Evergreen International Airlines (on behalf of Qantas Airways), Federal Express Corporation, Lufthansa German Airlines, Martinair Holland, Polar Air Cargo and United Parcel Service operated dedicated freighter services to/from Australia during 2001.
- As well as the above freight only operators, Cathay Pacific, Korean Air, Malaysia Airlines and Singapore Airlines operated dedicated freighter services in addition to their regular passenger services.
- Freight carried on dedicated freight aircraft accounted for 28.2% of inbound freight to Australia, 13.0% of outbound freight from Australia and 19.9% of total freight. Note that some freighters operate as charters out of Australia or do not pick up freight in Australia – this accounts for the difference in inbound and outbound percentages.
- Dedicated freighters accounted for around 3% of the total flights to and from Australia.
- The Boeing 747 freighter was the most popular of the dedicated freighter aircraft types, accounting for 1.6% of total aircraft movements in 2001. This was followed by McDonnell Douglas MD11 freighters with 0.8% and Boeing 727 freighters with 0.4%. There were also some Boeing 767 freighters.
- Qantas Airways had the largest share of freight carried to and from Australia in 2001 with 23.7% of the total, followed by Singapore Airlines with 15.5% and Air New Zealand with 7.7%.
- Table II shows total freight carried by uplift/discharge city pairs for 1999, 2000 and 2001.

\* Year on year comparisons of passenger traffic levels between 1999, 2000 and 2001 are affected by the passenger definition change that was introduced between January and June 2000 - Please refer to Explanatory Notes, Revenue Passenger definition in particular. The actual growth for passenger traffic in 2001 compared to 2000 is likely to be less than 1.8%. While data is not available from the Australian Bureau of Statistics to confirm this, data collected by the Australian Customs Service shows a very slight decrease of 0.1% for 2001 compared to 2000. On a world-wide basis, the International Civil Aviation Organization has estimated that international scheduled passengers carried in 2001 decreased by 1% compared to 2000.

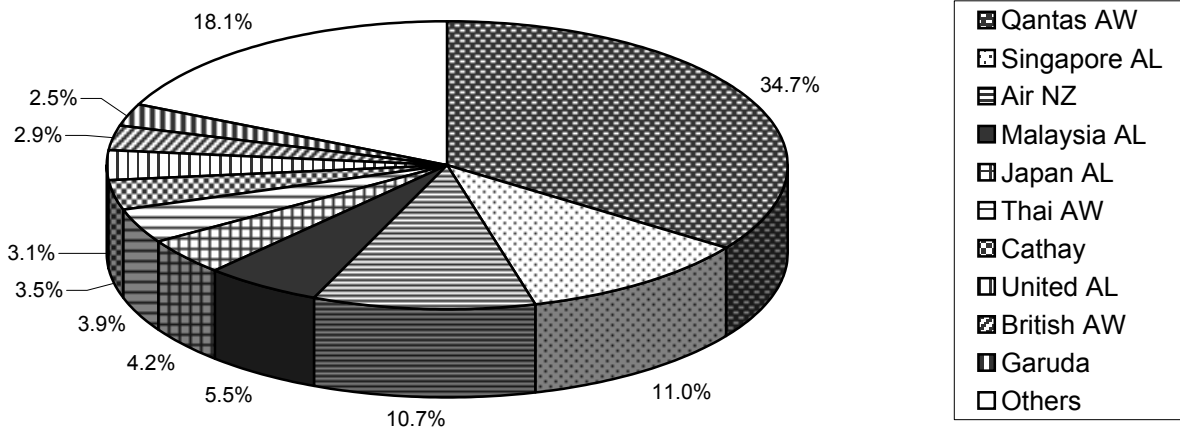
**CHART I: TOTAL INTERNATIONAL PASSENGERS CARRIED  
YEARS ENDED DECEMBER 1991 TO DECEMBER 2001**



**CHART II: TOTAL INTERNATIONAL PASSENGERS CARRIED BY MONTH**



**CHART III: INTERNATIONAL PASSENGERS BY MAJOR AIRLINES  
YEAR ENDED DECEMBER 2001**



Please refer to explanatory notes - Revenue passenger definition in particular.

**TABLE I: INTERNATIONAL PASSENGERS BY UPLIFT/DISCHARGE CITY PAIRS  
YEARS ENDED DECEMBER 1999, 2000 AND 2001**

Foreign Port	Australian Port	Year ended December 1999	Year ended December 2000	Year ended December 2001	% of Total	% Change 2001 over 2000
Auckland	Sydney	780,370	937,056	1,011,430	6.0	7.9
Singapore	Sydney	702,500	869,802	942,288	5.6	8.3
Los Angeles	Sydney	763,731	811,149	719,970	4.3	-11.2
Singapore	Perth	549,846	622,826	659,994	3.9	6.0
Singapore	Melbourne	519,168	582,318	644,145	3.8	10.6
Hong Kong	Sydney	584,048	668,701	607,290	3.6	-9.2
Auckland	Melbourne	395,713	435,314	522,103	3.1	19.9
Auckland	Brisbane	411,104	463,496	487,997	2.9	5.3
Bangkok	Sydney	400,155	419,370	440,268	2.6	5.0
Singapore	Brisbane	309,227	328,112	409,315	2.4	24.7
<b>Top 10 City Pairs</b>		<b>5,415,862</b>	<b>6,138,144</b>	<b>6,444,800</b>	<b>38.4</b>	<b>5.0</b>
Other City Pairs		9,570,701	10,349,530	10,337,722	61.6	-0.1
<b>ALL CITY PAIRS</b>		<b>14,986,563</b>	<b>16,487,674</b>	<b>16,782,522</b>	<b>100.0</b>	<b>1.8</b>

**TABLE II: INTERNATIONAL FREIGHT (TONNES) BY UPLIFT/DISCHARGE CITY PAIRS  
YEARS ENDED DECEMBER 1999, 2000 AND 2001**

Foreign Port	Australian Port	Year ended December 1999	Year ended December 2000	Year ended December 2001	% of Total	% Change 2001 over 2000
Auckland	Sydney	56,047	50,090	49,142	7.7	-1.9
Singapore	Melbourne	51,096	48,580	48,457	7.6	-0.3
Singapore	Sydney	43,689	46,313	48,164	7.5	4.0
Hong Kong	Sydney	34,252	33,976	30,658	4.8	-9.8
Auckland	Melbourne	34,722	29,571	30,355	4.7	2.6
Singapore	Perth	27,436	27,822	30,073	4.7	8.1
Los Angeles	Sydney	36,061	32,721	27,672	4.3	-15.4
Hong Kong	Melbourne	26,031	25,888	23,632	3.7	-8.7
Singapore	Brisbane	14,988	18,341	18,293	2.9	-0.3
Seoul	Sydney	12,316	18,792	16,973	2.7	-9.7
<b>Top 10 City Pairs</b>		<b>336,637</b>	<b>332,092</b>	<b>323,418</b>	<b>50.5</b>	<b>-2.6</b>
Other City Pairs		344,878	347,918	316,684	49.5	-9.0
<b>ALL CITY PAIRS</b>		<b>681,515</b>	<b>680,010</b>	<b>640,102</b>	<b>100.0</b>	<b>-5.9</b>

**TABLE III: INTERNATIONAL PASSENGERS BY UPLIFT/DISCHARGE COUNTRY  
YEARS ENDED DECEMBER 1999, 2000 AND 2001**

Country	Year ended December 1999	Year ended December 2000	Year ended December 2001	% of Total	% Change 2001 over 2000
New Zealand	2,845,114	3,282,102	3,587,400	21.4	9.3
Singapore	2,317,733	2,672,275	2,865,796	17.1	7.2
Japan	1,591,575	1,607,930	1,573,239	9.4	-2.2
USA	1,316,300	1,563,864	1,440,468	8.6	-7.9
Hong Kong	1,048,976	1,193,460	1,147,260	6.8	-3.9
Malaysia	906,098	1,004,640	936,531	5.6	-6.8
Thailand	692,089	745,495	834,317	5.0	11.9
Indonesia	807,536	809,803	806,530	4.8	-0.4
UK	637,571	667,607	635,552	3.8	-4.8
Korea	234,790	318,318	339,440	2.0	6.6
<b>Top 10 Countries</b>	<b>12,397,782</b>	<b>13,865,494</b>	<b>14,166,533</b>	<b>84.4</b>	<b>2.2</b>
Other Countries	2,588,781	2,622,180	2,615,989	15.6	-0.2
<b>ALL COUNTRIES</b>	<b>14,986,563</b>	<b>16,487,674</b>	<b>16,782,522</b>	<b>100.0</b>	<b>1.8</b>

Please refer to explanatory notes - Revenue passenger definition in particular.

**TABLE IV: INTERNATIONAL PASSENGER TRAFFIC  
THROUGH AUSTRALIAN INTERNATIONAL AIRPORTS  
YEARS ENDED DECEMBER 1999, 2000 AND 2001**

Airport	Year ended December 1999	Year ended December 2000	Year ended December 2001	% of Total	% Change 2001 over 2000
Sydney	7,388,153	8,237,223	8,223,558	49.0	-0.2
Melbourne	2,654,807	3,043,629	3,311,861	19.7	8.8
Brisbane	2,375,767	2,461,378	2,540,358	15.1	3.2
Perth	1,474,898	1,580,622	1,587,088	9.5	0.4
Cairns	660,659	680,133	664,795	4.0	-2.3
Adelaide	241,014	270,099	241,782	1.4	-10.5
Darwin	156,058	169,496	151,594	0.9	-10.6
Coolangatta	16,923	28,138	41,581	0.2	47.8
Norfolk Island	15,073	14,073	16,367	0.1	16.3
Broome (a)	..	2,883	2,337	0.0	-18.9
Newcastle (b)	..	..	1,054	0.0	..
Townsville (c)	242	..	147	0.0	..
Port Hedland (d)	2,969	..	..	..	..
<b>ALL AIRPORTS</b>	<b>14,986,563</b>	<b>16,487,674</b>	<b>16,782,522</b>	<b>100.0</b>	<b>1.8</b>

(a) International operations recommenced April 2000 and ceased August 2001.

(b) International operations commenced December 2001.

(c) International operations ceased February 1999 and recommenced October 2001.

(d) International operations ceased January 2000.

Please refer to explanatory notes - Revenue passenger definition in particular.

# YEAR ENDED DECEMBER 2001 - SUMMARY

Number of international scheduled airlines that operated services to/from Australia during 2001:  
(includes dedicated freight airlines but excludes airlines operating only via code share arrangements)

50

## Traffic carried:

	Inbound	Outbound	Total
Passengers Carried (millions)	8.4	8.3	16.8
Available Seats (millions)	12.1	12.1	24.1
Freight (tonnes, thousands)	289.7	350.4	640.1
Mail (tonnes, thousands)	14.8	13.9	28.8
Aircraft Movements (thousands)	55.0	54.6	109.6

## Growth in Passenger traffic:

Compared to 2000  
Compared to 1999

1.8%

12.0%

## Growth in Freight traffic:

Compared to 2000  
Compared to 1999

-5.9%

-6.1%

## Top five airlines:

### Passengers

Qantas Airways  
Singapore Airlines  
Air New Zealand  
Malaysia Airlines  
Japan Airlines

% of  
Total

34.7%  
11.0%  
10.7%  
5.5%  
4.2%

### Freight

Qantas Airways  
Singapore Airlines  
Air New Zealand  
Cathay Pacific Airways  
Malaysia Airlines

% of  
Total

23.7%  
15.5%  
7.7%  
7.5%  
5.2%

## Top five city pairs:

### Passengers

Sydney Auckland  
Sydney Singapore  
Sydney Los Angeles  
Perth Singapore  
Melbourne Singapore

% of  
Total

6.0%  
5.6%  
4.3%  
3.9%  
3.8%

### Freight

Sydney Auckland  
Melbourne Singapore  
Sydney Singapore  
Sydney Hong Kong  
Melbourne Auckland

% of  
Total

7.7%  
7.6%  
7.5%  
4.8%  
4.7%

## Major International Airports:

### Passengers

Sydney  
Melbourne  
Brisbane  
Perth

% of  
Total

49.0%  
19.7%  
15.1%  
9.5%

### Freight

Sydney  
Melbourne  
Brisbane  
Perth

% of  
Total

47.8%  
28.2%  
11.9%  
8.5%

Please refer to explanatory notes - Revenue passenger definition in particular.

TABLE 1: SCHEDULED INTERNATIONAL AIR TRAFFIC TO AND FROM AUSTRALIA: Year ended December 2001

Scheduled Operator	Country to/from	Inbound			Outbound		
		Passengers	Freight (tonnes)	Mail (tonnes)	Passengers	Freight (tonnes)	Mail (tonnes)
Aerolineas Argentinas (a)	Argentina	5,849	36.2	4.2	6,459	288.7	-
"	New Zealand	2,115	370.9	0.1	2,930	75.7	-
"	ALL SERVICES	7,964	407.1	4.3	9,389	364.4	-
Air Caledonie	New Caledonia	36,032	29.0	5.9	36,232	447.4	22.1
Air Canada	Canada	30,372	612.4	66.5	30,859	1,531.2	0.1
"	USA	26,111	1,048.4	150.5	27,014	1,251.4	3.4
"	ALL SERVICES	56,483	1,660.8	217.0	57,873	2,782.6	3.4
Air China	China	55,637	826.6	35.7	49,966	718.5	-
"	New Zealand	2,575	1.5	-	1,930	116.1	0.1
"	ALL SERVICES	58,212	828.1	35.7	51,896	834.7	0.1
Air Mauritius	Mauritius	14,332	340.7	0.7	13,965	591.8	0.1
Air Nauru	Nauru	5,174	13.2	0.9	5,007	202.8	8.3
Air New Zealand	New Zealand	819,500	22,468.6	1,205.9	818,390	21,872.4	134.2
"	USA	78,775	1,769.8	152.4	74,336	2,864.5	-
"	ALL SERVICES	898,275	24,238.4	1,358.4	892,726	24,736.9	134.2
Air Niugini	Papua New Guinea	53,670	1,532.4	17.8	53,374	2,010.5	105.7
Air Pacific	Fiji	123,498	3,450.5	42.8	125,465	3,462.3	147.0
Air Vanuatu	Vanuatu	33,534	163.1	24.2	33,182	377.2	48.7
Ansett International (b)	Fiji	8,687	246.0	-	8,836	198.0	0.8
"	Hong Kong	71,419	3,063.7	104.8	65,775	3,422.7	4.9
"	Indonesia	36,137	327.5	-	36,794	57.1	0.0
"	Japan	85,574	1,724.0	38.2	83,313	2,578.6	2.8
"	ALL SERVICES	201,817	5,361.2	143.0	194,718	6,256.3	8.6
Asian Express Airlines	New Zealand	..	3,582.5	-	..	4,019.9	-
Asiana Airlines	Korea	61,845	1,480.6	145.4	58,269	2,331.2	-
British Airways	Singapore	63,457	1,259.7	3.3	46,812	5,941.9	7.1
"	Thailand	65,473	849.8	1.3	62,113	552.7	30.5
"	UK	122,974	4,232.3	489.1	120,949	1,592.4	332.8
"	ALL SERVICES	251,904	6,341.9	493.7	229,874	8,087.0	370.4
Cargolux Airlines Intl	Luxembourg	-	4,131.3	-	..	..	..
"	Malaysia	..	326.5	-	..	..	..
"	New Zealand	..	..	..	-	6,357.8	-
"	Thailand	-	204.8	-	..	..	..
"	ALL SERVICES	-	4,662.6	-	-	6,357.8	-
Cathay Pacific Airways	Hong Kong	300,122	19,136.1	136.0	286,659	28,580.7	172.1
China Airlines	New Zealand	16,422	551.9	3.6	14,856	1,596.3	35.4
"	Taiwan	27,013	874.0	117.3	25,746	1,521.4	-
"	ALL SERVICES	43,435	1,425.9	120.9	40,602	3,117.7	35.4
China Eastern Airlines	China	30,813	1,204.2	2.4	29,417	650.8	-
China Southern Airlines	China	29,857	1,643.8	9.3	29,461	181.0	-
Continental Micronesia	Guam	10,562	1.0	-	10,846	39.2	-
EgyptAir	Egypt	14,919	325.6	80.6	14,777	304.7	0.3
"	Singapore	4,248	380.6	68.7	3,869	261.0	-
"	ALL SERVICES	19,167	706.2	149.3	18,646	565.7	0.3
Emirates	Singapore	26,144	1,850.5	4.8	23,188	4,304.8	21.2
"	United Arab Emirates	97,650	3,407.3	28.2	99,125	5,932.4	21.2
"	ALL SERVICES	123,794	5,257.8	33.0	122,313	10,237.2	42.4
Eva Air	Taiwan	37,554	1,243.6	23.3	35,709	1,734.7	0.8
Evergreen Intl Airlines (c)	American Samoa	..	0.3	-	..	..	..
"	Fiji	..	41.7	-	..	..	..
"	New Zealand	..	593.3	5.8	..	..	..
"	USA	..	8,722.5	110.3	..	..	..
"	ALL SERVICES	-	9,357.8	116.2	-	-	-
Federal Express Corporation	Philippines	..	..	..	..	10,163.2	-
"	USA	..	13,104.1	153.5	..	..	..
"	ALL SERVICES	-	13,104.1	153.5	-	10,163.2	-
Freedom Air International	New Zealand	122,435	-	-	119,955	-	-
Garuda Indonesia	Indonesia	195,235	4,879.3	1.7	199,623	4,615.7	0.1
"	New Zealand	13,847	508.1	-	12,401	110.2	-
"	ALL SERVICES	209,082	5,387.5	1.7	212,024	4,725.9	0.1
Gulf Air	Bahrain	35,709	1,279.8	32.5	31,248	2,497.9	0.0
"	Singapore	6,822	462.0	9.0	12,779	844.8	0.6
"	United Arab Emirates	4,737	71.1	0.0	2,137	226.0	-
"	ALL SERVICES	47,268	1,812.9	41.5	46,164	3,568.7	0.6
Japan Airlines	Japan	353,838	4,630.2	899.0	354,145	16,535.1	51.9
KLM Royal Dutch Airlines (d)	Netherlands	9,905	498.3	103.7	11,433	257.5	-

TABLE 1: SCHEDULED INTERNATIONAL AIR TRAFFIC TO AND FROM AUSTRALIA: Year ended December 2001

Scheduled Operator	Country to/from	Inbound			Outbound		
		Passengers	Freight (tonnes)	Mail (tonnes)	Passengers	Freight (tonnes)	Mail (tonnes)
KLM Royal Dutch Airlines	Singapore	426	-	-	535	-	-
"	ALL SERVICES	10,331	498.3	103.7	11,968	257.5	-
Korean Air	Korea	111,225	7,055.8	315.6	108,101	7,952.2	3.6
Lauda Air (e)	Austria	57,127	301.7	-	65,928	-	-
"	Malaysia	5,994	-	-	6,332	-	-
"	ALL SERVICES	63,121	301.7	-	72,260	-	-
Lufthansa German Airlines (f)	Germany	..	208.1	-	..	681.3	7.6
"	Malaysia	..	..	..	..	1,069.9	-
"	New Zealand	..	2,200.7	-	..	..	..
"	Pakistan	..	..	..	..	29.5	-
"	Tahiti	..	3.8	-	..	..	..
"	United Arab Emirates	..	..	..	..	3.0	-
"	USA	..	2,834.8	2.1	..	..	..
"	ALL SERVICES	-	5,247.5	2.1	-	1,783.6	7.6
Malaysia Airlines	Malaysia	470,246	15,490.9	49.4	453,959	18,040.3	-
Martinair Holland	Netherlands	..	8,484.4	-	..	1,551.6	-
"	United Arab Emirates	..	..	..	..	27.0	-
"	ALL SERVICES	-	8,484.4	-	-	1,578.6	-
Merpati Nusantara Airlines (g)	East Timor	66	-	-	80	-	-
"	Indonesia	541	0.6	-	412	1.1	-
"	ALL SERVICES	607	0.6	-	492	1.1	-
Olympic Airways	Greece	29,398	305.7	358.1	29,410	167.9	1.3
"	Thailand	4,152	180.6	-	4,243	3.1	-
"	ALL SERVICES	33,550	486.3	358.1	33,653	171.1	1.3
Philippine Airlines	Philippines	26,318	684.5	0.8	23,863	1,095.0	-
Polar Air Cargo	USA	..	6,951.4	-	..	..	..
Polynesian Airlines	New Zealand	4,564	3.3	0.4	4,282	43.0	1.6
"	Tahiti	768	-	-	2,283	10.1	26.6
"	Tonga	2,846	33.0	2.8	2,061	18.4	5.2
"	Western Samoa	5,549	117.8	0.9	3,417	29.5	3.6
"	ALL SERVICES	13,727	154.2	4.1	12,043	101.0	37.0
Qantas Airways	Argentina	24,098	78.7	3.0	24,621	366.0	20.5
"	Canada	8,316	45.9	-	9,967	112.9	63.4
"	China	10,203	196.6	-	8,942	123.6	1.1
"	East Timor	723	0.8	0.1	837	5.8	1.3
"	France	28,411	897.8	180.1	32,759	174.7	81.1
"	Germany	62,376	3,948.8	473.4	70,007	1,184.4	979.6
"	Hong Kong	215,298	5,171.6	187.2	207,987	10,839.6	628.6
"	India	19,485	272.7	13.6	15,649	128.6	179.5
"	Indonesia	170,888	642.8	39.8	166,900	1,849.1	83.1
"	Italy	44,336	1,640.8	29.8	44,427	119.6	80.8
"	Japan	348,183	5,409.2	366.9	348,186	9,371.9	1,624.9
"	New Caledonia	20,372	6.5	3.5	19,691	163.1	24.8
"	New Zealand	716,944	17,879.8	556.0	750,098	19,528.2	2,248.0
"	Papua New Guinea	21,888	105.6	16.2	22,855	909.4	208.1
"	Philippines	39,384	657.1	22.3	38,424	997.5	49.8
"	Singapore	425,593	9,795.7	230.2	398,782	31,240.8	1,236.6
"	South Africa	62,488	1,307.2	15.2	56,714	492.8	92.5
"	Taiwan	28,818	946.8	-	27,270	467.6	47.7
"	Thailand	91,086	1,595.0	42.8	79,959	2,300.7	256.8
"	UK	189,651	5,123.5	2,795.0	201,978	1,134.4	2,331.9
"	USA	381,268	8,000.8	787.4	381,923	6,523.4	2,189.8
"	ALL SERVICES	2,909,809	63,723.6	5,762.3	2,907,976	88,034.0	12,429.9
Royal Brunei Airlines	Brunei	52,416	590.7	0.4	54,475	2,426.7	-
Singapore Airlines	Malaysia	..	..	..	..	201.7	-
"	New Zealand	..	..	..	..	1,882.5	-
"	Singapore	929,712	40,743.5	1,366.1	923,429	56,497.1	149.8
"	ALL SERVICES	929,712	40,743.5	1,366.1	923,429	58,581.2	149.8
Solomon Airlines (h)	Solomon Islands	3,656	55.5	-	3,589	58.4	-
South African Airways	South Africa	46,047	763.8	19.2	38,714	1,747.7	17.3
SriLankan Airlines (i)	Sri Lanka	17,118	655.4	3.1	14,006	585.4	0.0
Thai Airways International	New Zealand	63,186	3,278.2	2.1	56,596	4,640.3	1.5
"	Thailand	266,116	7,581.0	772.6	261,175	9,694.7	16.3
"	ALL SERVICES	329,302	10,859.2	774.7	317,771	14,335.0	17.8
United Airlines	American Samoa	..	..	..	290	1.3	0.8
"	New Zealand	19,430	1,221.7	14.0	24,944	1,543.2	2.2



TABLE 1: SCHEDULED INTERNATIONAL AIR TRAFFIC TO AND FROM AUSTRALIA: Year ended December 2001

Scheduled Operator	Country to/from	Inbound			Outbound		
		Passengers	Freight (tonnes)	Mail (tonnes)	Passengers	Freight (tonnes)	Mail (tonnes)
United Airlines	USA	235,640	1,620.0	1,846.1	235,401	8,474.0	127.1
"	ALL SERVICES	255,070	2,841.6	1,860.1	260,635	10,018.5	130.1
United Parcel Service	USA	..	4,300.2	-	..	..	..
Vietnam Airlines	Vietnam	38,745	830.8	26.4	36,010	648.4	-
<b>TOTAL</b>		<b>8,441,667</b>	<b>289,723.1</b>	<b>14,822.2</b>	<b>8,340,855</b>	<b>350,378.6</b>	<b>13,946.4</b>

Please refer to explanatory notes.

(a) Nil Operations for July 2001 to November 2001.

(b) Service ceased September 2001.

(c) Traffic carried on behalf of Qantas Airways.

(d) Service ceased March 2001.

(e) No outbound freight data for September 2000 onwards. No inbound freight data for April 2001 onwards.

(f) Service recommenced March 2001.

(g) Nil operations for May and July 2001. No data for August 2001 onwards.

(h) Latest data received is for June 2001.

(i) Service ceased July 2001.

TABLE 2: SCHEDULED OPERATOR MARKET SHARES AND GROWTH: Year ended December

Scheduled Operators	Country to/from	Total Passengers				Total Freight (tonnes)				Total Mail (tonnes)			
		2000	2001	(%) of TOTAL	(%) Change	2000	2001	(%) of TOTAL	(%) Change	2000	2001	(%) of TOTAL	(%) Change
Aerolineas Argentinas (a)	Argentina	28,793	12,308	0.1	-57.3	616.1	324.9	0.1	-47.3	11.9	4.2	0.0	-64.7
"	New Zealand	11,244	5,045	0.0	-55.1	1,007.5	446.6	0.1	-55.7	4.7	0.1	0.0	-97.3
"	ALL SERVICES	40,037	17,353	0.1	-56.7	1,623.6	771.5	0.1	-52.5	16.7	4.3	0.0	-74.0
Air Caledonie	New Caledonia	60,758	72,264	0.4	18.9	362.1	476.4	0.1	31.6	47.1	28.0	0.1	-40.5
Air Canada (b)	Canada	..	61,231	0.4	..	..	2,143.6	0.3	..	..	66.6	0.2	..
"	USA	..	53,125	0.3	..	..	2,299.7	0.4	..	..	153.9	0.5	..
"	ALL SERVICES	-	114,356	0.7	..	-	4,443.4	0.7	..	-	220.5	0.8	..
Air China	China	94,892	105,603	0.6	11.3	2,073.5	1,545.2	0.2	-25.5	48.8	35.7	0.1	-26.8
"	New Zealand	8,465	4,505	0.0	-46.8	218.1	117.6	0.0	-46.1	-	0.1	0.0	..
"	ALL SERVICES	103,357	110,108	0.7	6.5	2,291.6	1,662.8	0.3	-27.4	48.8	35.9	0.1	-26.5
Air Mauritius	Mauritius	27,335	28,297	0.2	3.5	1,003.5	932.5	0.1	-7.1	1.4	0.7	0.0	-45.9
Air Nauru	Nauru	14,681	10,181	0.1	-30.7	228.7	216.0	0.0	-5.6	14.4	9.2	0.0	-35.8
Air New Zealand	Fiji	192	..	..	-100.0	9.6	..	..	-100.0	-	..	..	..
"	New Zealand	1,594,475	1,637,890	9.8	2.7	53,712.7	44,341.1	6.9	-17.4	1,248.3	1,340.1	4.7	7.4
"	USA	200,047	153,111	0.9	-23.5	9,708.3	4,634.3	0.7	-52.3	249.4	152.4	0.5	-38.9
"	ALL SERVICES	1,794,714	1,791,001	10.7	-0.2	63,430.6	48,975.3	7.7	-22.8	1,497.7	1,492.5	5.2	-0.3
Air Niugini	Papua New Guinea	93,058	107,044	0.6	15.0	2,559.1	3,542.9	0.6	38.4	34.8	123.5	0.4	255.2
Air Pacific	Fiji	144,732	248,963	1.5	72.0	7,060.3	6,912.8	1.1	-2.1	143.2	189.8	0.7	32.5
Air Vanuatu	Vanuatu	63,179	66,716	0.4	5.6	541.4	540.3	0.1	-0.2	69.0	73.0	0.3	5.8
Air Zimbabwe (c)	Zimbabwe	484	..	..	-100.0	-	..	..	..	-	..	..	..
Alitalia (d)	Italy	36,145	..	..	-100.0	1,104.3	..	..	-100.0	0.7	..	..	-100.0
"	Singapore	2,810	..	..	-100.0	1,047.2	..	..	-100.0	-	..	..	..
"	Thailand	..	..	..	..	16.9	..	..	-100.0	-	..	..	..
"	ALL SERVICES	38,955	-	-	-100.0	2,168.5	-	-	-100.0	0.7	-	-	-100.0
Ansett International (e)	Fiji	17,933	17,523	0.1	-2.3	589.5	444.1	0.1	-24.7	3.2	0.8	0.0	-74.6
"	Hong Kong	182,805	137,194	0.8	-25.0	8,365.3	6,486.4	1.0	-22.5	101.1	109.7	0.4	8.6
"	Indonesia	114,377	72,931	0.4	-36.2	464.3	384.5	0.1	-17.2	0.3	0.0	0.0	-99.7
"	Japan	217,261	168,887	1.0	-22.3	6,048.9	4,302.5	0.7	-28.9	204.4	41.0	0.1	-79.9
"	New Zealand	..	..	..	..	317.2	..	..	-100.0	-	..	..	..
"	Taiwan	6,400	..	..	-100.0	310.9	..	..	-100.0	8.8	..	..	-100.0
"	ALL SERVICES	538,776	396,535	2.4	-26.4	16,096.2	11,617.5	1.8	-27.8	317.8	151.6	0.5	-52.3
AOM French Airlines (f)	France	3,934	..	..	-100.0	194.9	..	..	-100.0	-	..	..	..
"	New Caledonia	3,020	..	..	-100.0	223.3	..	..	-100.0	-	..	..	..
"	Sri Lanka	1,397	..	..	-100.0	49.6	..	..	-100.0	-	..	..	..
"	ALL SERVICES	8,351	-	-	-100.0	467.8	-	-	-100.0	-	-	-	..
Asian Express Airlines	New Zealand	..	..	..	..	7,817.5	7,602.3	1.2	-2.8	-	-	-	..
Asiana Airlines	Korea	102,824	120,114	0.7	16.8	3,403.9	3,811.8	0.6	12.0	112.2	145.4	0.5	29.6
British Airways	Malaysia	15,282	..	..	-100.0	334.1	..	..	-100.0	18.5	..	..	-100.0
"	Singapore	168,865	110,269	0.7	-34.7	9,277.0	7,201.6	1.1	-22.4	115.9	10.4	0.0	-91.0
"	Thailand	123,302	127,586	0.8	3.5	1,384.8	1,402.5	0.2	1.3	48.1	31.8	0.1	-33.8
"	UK	280,692	243,923	1.5	-13.1	6,044.1	5,824.7	0.9	-3.6	1,427.7	821.9	2.9	-42.4
"	ALL SERVICES	588,141	481,778	2.9	-18.1	17,040.0	14,428.9	2.3	-15.3	1,610.1	864.1	3.0	-46.3
Canadian Airlines Intl (b)	Canada	48,147	..	..	-100.0	1,100.1	..	..	-100.0	65.3	..	..	-100.0
"	USA	30,468	..	..	-100.0	2,096.2	..	..	-100.0	56.4	..	..	-100.0

TABLE 2: SCHEDULED OPERATOR MARKET SHARES AND GROWTH: Year ended December

Scheduled Operators	Country to/from	Total Passengers				Total Freight (tonnes)				Total Mail (tonnes)			
		2000	2001	(%) of TOTAL	(%) Change	2000	2001	(%) of TOTAL	(%) Change	2000	2001	(%) of TOTAL	(%) Change
Canadian Airlines Intl	ALL SERVICES	78,615	-	-	-100.0	3,196.3	-	-	-100.0	121.6	-	-	-100.0
Cargolux Airlines Intl	Luxembourg	..	-	-	..	5,679.2	4,131.3	0.6	-27.3	-	-	-	..
"	Malaysia	..	..	..	..	..	326.5	0.1	..	..	..	..	..
"	New Zealand	..	..	..	..	5,281.5	6,357.8	1.0	20.4	-	-	-	..
"	Thailand	..	-	-	..	575.3	204.8	0.0	-64.4	-	-	-	..
"	ALL SERVICES	-	-	-	..	11,536.1	11,020.4	1.7	-4.5	-	-	-	..
Cathay Pacific Airways	Hong Kong	611,587	586,781	3.5	-4.1	48,599.3	47,716.9	7.5	-1.8	318.1	308.0	1.1	-3.2
China Airlines (g)	New Zealand	29,916	31,278	0.2	4.6	2,248.6	2,148.2	0.3	-4.5	0.1	39.0	0.1	>999.9
"	Taiwan	42,056	52,759	0.3	25.4	5,780.4	2,395.4	0.4	-58.6	51.2	117.3	0.4	129.1
"	ALL SERVICES	71,972	84,037	0.5	16.8	8,029.0	4,543.6	0.7	-43.4	51.4	156.3	0.5	204.4
China Eastern Airlines	China	60,648	60,230	0.4	-0.7	2,027.8	1,855.1	0.3	-8.5	43.0	2.4	0.0	-94.4
China Southern Airlines (h)	China	4,516	59,318	0.4	1213.5	111.2	1,824.8	0.3	1541.3	-	9.3	0.0	..
Connie Kalitta Services (i)	USA	..	..	..	..	840.3	..	..	-100.0	-	..	..	..
Continental Micronesia	Guam	21,067	21,408	0.1	1.6	22.1	40.2	0.0	82.1	-	-	-	..
EgyptAir	Egypt	29,126	29,696	0.2	2.0	701.4	630.4	0.1	-10.1	106.9	80.9	0.3	-24.3
"	Singapore	5,827	8,117	0.0	39.3	716.2	641.6	0.1	-10.4	45.0	68.7	0.2	52.8
"	ALL SERVICES	34,953	37,813	0.2	8.2	1,417.6	1,271.9	0.2	-10.3	151.9	149.7	0.5	-1.5
Emirates	Singapore	44,653	49,332	0.3	10.5	6,147.9	6,155.3	1.0	0.1	1.0	26.0	0.1	2483.6
"	United Arab Emirates	168,235	196,775	1.2	17.0	7,159.7	9,339.7	1.5	30.4	58.7	49.5	0.2	-15.7
"	ALL SERVICES	212,888	246,107	1.5	15.6	13,307.6	15,495.0	2.4	16.4	59.7	75.4	0.3	26.5
Eva Air	Taiwan	103,104	73,263	0.4	-28.9	4,508.6	2,978.3	0.5	-33.9	17.9	24.0	0.1	34.4
Evergreen Intl Airlines (j)	American Samoa	..	..	..	..	..	0.3	0.0	..	-	-	-	..
"	Fiji	..	..	..	..	95.6	41.7	0.0	-56.4	-	-	-	..
"	Indonesia	..	..	..	..	0.1	..	..	-100.0	-	..	..	..
"	New Zealand	..	..	..	..	483.0	593.3	0.1	22.8	7.6	5.8	0.0	-23.4
"	Singapore	..	..	..	..	1.0	..	..	-100.0	-	..	..	..
"	UK	..	..	..	..	-	..	..	..	0.5	..	..	-100.0
"	USA	..	..	..	..	8,042.7	8,722.5	1.4	8.5	58.2	110.3	0.4	89.6
"	ALL SERVICES	-	-	-	..	8,622.4	9,357.8	1.5	8.5	66.3	116.2	0.4	75.2
Federal Express Corporation	Philippines	..	..	..	..	8,148.1	10,163.2	1.6	24.7	-	-	-	..
"	USA	..	..	..	..	12,610.6	13,104.1	2.0	3.9	209.4	153.5	0.5	-26.7
"	ALL SERVICES	-	-	-	..	20,758.7	23,267.3	3.6	12.1	209.4	153.5	0.5	-26.7
Freedom Air International	New Zealand	226,810	242,390	1.4	6.9	-	-	-	..	-	-	-	..
Garuda Indonesia	Indonesia	379,469	394,858	2.4	4.1	8,881.0	9,495.0	1.5	6.9	2.9	1.8	0.0	-38.9
"	New Zealand	31,941	26,248	0.2	-17.8	610.1	618.3	0.1	1.3	-	-	-	..
"	ALL SERVICES	411,410	421,106	2.5	2.4	9,491.1	10,113.4	1.6	6.6	2.9	1.8	0.0	-38.9
Gulf Air	Bahrain	66,877	66,957	0.4	0.1	4,538.5	3,777.7	0.6	-16.8	34.3	32.5	0.1	-5.2
"	Singapore	16,816	19,601	0.1	16.6	892.7	1,306.8	0.2	46.4	0.4	9.6	0.0	2642.7
"	United Arab Emirates	15,451	6,874	0.0	-55.5	972.2	297.1	0.0	-69.4	0.1	0.0	0.0	-79.5
"	ALL SERVICES	99,144	93,432	0.6	-5.8	6,403.5	5,381.6	0.8	-16.0	34.7	42.2	0.1	21.4
Japan Airlines	Japan	698,526	707,983	4.2	1.4	20,650.7	21,165.2	3.3	2.5	756.8	950.9	3.3	25.7
KLM Royal Dutch Airlines (k)	Netherlands	90,285	21,338	0.1	-76.4	4,185.2	755.7	0.1	-81.9	329.4	103.7	0.4	-68.5
"	Singapore	3,812	961	0.0	-74.8	-	-	-	..	-	-	-	..
"	ALL SERVICES	94,097	22,299	0.1	-76.3	4,185.2	755.7	0.1	-81.9	329.4	103.7	0.4	-68.5

TABLE 2: SCHEDULED OPERATOR MARKET SHARES AND GROWTH: Year ended December

Scheduled Operators	Country to/from	Total Passengers				Total Freight (tonnes)				Total Mail (tonnes)			
		2000	2001	(%) of TOTAL	(%) Change	2000	2001	(%) of TOTAL	(%) Change	2000	2001	(%) of TOTAL	(%) Change
Korean Air	Korea	204,848	219,326	1.3	7.1	18,036.4	15,008.0	2.3	-16.8	133.2	319.2	1.1	139.5
Lauda Air (l)	Austria	103,666	123,055	0.7	18.7	2,271.1	301.7	0.0	-86.7	-	-	-	..
"	Malaysia	10,260	12,326	0.1	20.1	554.4	-	-	-100.0	-	-	-	..
"	ALL SERVICES	113,926	135,381	0.8	18.8	2,825.6	301.7	0.0	-89.3	-	-	-	..
Lufthansa German Airlines (m)	Germany	..	..	..	..	..	889.4	0.1	..	..	7.6	0.0	..
"	Malaysia	..	..	..	..	..	1,069.9	0.2	..	..	-	-	..
"	New Zealand	..	..	..	..	..	2,200.7	0.3	..	..	-	-	..
"	Pakistan	..	..	..	..	..	29.5	0.0	..	..	-	-	..
"	Tahiti	..	..	..	..	..	3.8	0.0	..	..	-	-	..
"	United Arab Emirates	..	..	..	..	..	3.0	0.0	..	..	-	-	..
"	USA	..	..	..	..	..	2,834.8	0.4	..	..	2.1	0.0	..
"	ALL SERVICES	-	-	-	..	-	7,031.1	1.1	..	-	9.7	0.0	..
Malaysia Airlines	Malaysia	979,098	924,205	5.5	-5.6	36,590.2	33,531.2	5.2	-8.4	53.9	49.4	0.2	-8.2
"	New Zealand	..	..	..	..	1,281.7	..	..	-100.0	-	..	..	..
"	ALL SERVICES	979,098	924,205	5.5	-5.6	37,872.0	33,531.2	5.2	-11.5	53.9	49.4	0.2	-8.2
Mandarin Airlines (g)	Taiwan	11,689	..	..	-100.0	407.6	..	..	-100.0	3.9	..	..	-100.0
Martinair Holland	Netherlands	..	..	..	..	8,465.3	10,036.1	1.6	18.6	-	-	-	..
"	Thailand	..	..	..	..	5.7	..	..	-100.0	-	..	..	..
"	United Arab Emirates	..	..	..	..	..	27.0	0.0	..	..	-	-	..
"	ALL SERVICES	-	-	-	..	8,471.0	10,063.1	1.6	18.8	-	-	-	..
Merpati Nusantara Airlines (n)	East Timor	..	146	0.0	..	..	-	-	..	..	-	-	..
"	Indonesia	3,799	953	0.0	-74.9	12.0	1.7	0.0	-85.6	-	-	-	..
"	ALL SERVICES	3,799	1,099	0.0	-71.1	12.0	1.7	0.0	-85.6	-	-	-	..
Olympic Airways	Greece	56,112	58,808	0.4	4.8	542.7	473.6	0.1	-12.7	330.4	359.4	1.2	8.8
"	Thailand	8,283	8,395	0.1	1.4	439.2	183.8	0.0	-58.2	-	-	-	..
"	ALL SERVICES	64,395	67,203	0.4	4.4	981.8	657.4	0.1	-33.0	330.4	359.4	1.2	8.8
Philippine Airlines (o)	Philippines	28,172	50,181	0.3	78.1	1,091.2	1,779.5	0.3	63.1	-	0.8	0.0	..
Polar Air Cargo	Philippines	..	..	..	..	291.8	..	..	-100.0	-	..	..	..
"	USA	..	..	..	..	10,768.7	6,951.4	1.1	-35.4	-	-	-	..
"	ALL SERVICES	-	-	-	..	11,060.5	6,951.4	1.1	-37.2	-	-	-	..
Polynesian Airlines (p)	New Zealand	11,095	8,846	0.1	-20.3	8.7	46.3	0.0	430.1	-	1.9	0.0	..
"	Tahiti	..	3,051	0.0	..	..	10.1	0.0	..	..	26.6	0.1	..
"	Tonga	2,131	4,907	0.0	130.3	7.6	51.5	0.0	581.4	1.1	8.0	0.0	662.7
"	Western Samoa	5,122	8,966	0.1	75.0	129.5	147.3	0.0	13.8	10.8	4.5	0.0	-58.0
"	ALL SERVICES	18,348	25,770	0.2	40.5	145.8	255.2	0.0	75.1	11.8	41.1	0.1	247.4
Qantas Airways	Argentina	40,175	48,719	0.3	21.3	510.3	444.7	0.1	-12.9	15.5	23.5	0.1	51.6
"	Canada	42,709	18,283	0.1	-57.2	736.5	158.8	0.0	-78.4	186.0	63.4	0.2	-65.9
"	China	52,212	19,145	0.1	-63.3	1,250.4	320.2	0.1	-74.4	3.6	1.1	0.0	-70.8
"	East Timor	9,522	1,560	0.0	-83.6	31.1	6.6	0.0	-78.8	8.3	1.4	0.0	-83.0
" (c)	Fiji	59,451	..	..	-100.0	583.2	..	..	-100.0	3.8	..	..	-100.0
"	France	57,293	61,170	0.4	6.8	1,620.6	1,072.5	0.2	-33.8	203.0	261.2	0.9	28.7
"	Germany	126,407	132,383	0.8	4.7	5,865.3	5,133.2	0.8	-12.5	1,084.5	1,453.0	5.1	34.0
"	Hong Kong	399,068	423,285	2.5	6.1	16,803.4	16,011.2	2.5	-4.7	750.7	815.7	2.8	8.7
"	India	31,085	35,134	0.2	13.0	704.8	401.2	0.1	-43.1	185.1	193.1	0.7	4.3

TABLE 2: SCHEDULED OPERATOR MARKET SHARES AND GROWTH: Year ended December

Scheduled Operators	Country to/from	Total Passengers				Total Freight (tonnes)				Total Mail (tonnes)			
		2000	2001	(%) of TOTAL	(%) Change	2000	2001	(%) of TOTAL	(%) Change	2000	2001	(%) of TOTAL	(%) Change
Qantas Airways	Indonesia	312,158	337,788	2.0	8.2	3,628.0	2,491.9	0.4	-31.3	127.8	122.9	0.4	-3.9
"	Italy	67,332	88,763	0.5	31.8	1,727.3	1,760.4	0.3	1.9	59.6	110.6	0.4	85.5
"	Japan	692,143	696,369	4.1	0.6	14,841.7	14,781.1	2.3	-0.4	1,887.3	1,991.8	6.9	5.5
" (c)	Korea	10,646	..	..	-100.0	-	..	..	..	-	..	..	..
"	New Caledonia	31,531	40,063	0.2	27.1	85.9	169.6	0.0	97.4	20.7	28.3	0.1	36.7
"	New Zealand	1,280,049	1,467,042	8.7	14.6	37,218.5	37,408.0	5.8	0.5	3,007.1	2,804.0	9.7	-6.8
"	Papua New Guinea	63,131	44,743	0.3	-29.1	1,337.7	1,015.0	0.2	-24.1	286.8	224.3	0.8	-21.8
"	Philippines	115,362	77,808	0.5	-32.6	2,641.0	1,654.6	0.3	-37.3	101.7	72.0	0.3	-29.2
"	Singapore	690,737	824,375	4.9	19.3	31,717.3	41,036.5	6.4	29.4	1,261.5	1,466.8	5.1	16.3
" (c)	Solomon Islands	3,612	..	..	-100.0	8.0	..	..	-100.0	19.1	..	..	-100.0
"	South Africa	88,061	119,202	0.7	35.4	2,221.0	1,800.0	0.3	-19.0	37.1	107.8	0.4	190.2
" (c)	Switzerland	1,166	..	..	-100.0	-	..	..	..	-	..	..	..
" (c)	Tahiti	18,935	..	..	-100.0	366.1	..	..	-100.0	12.8	..	..	-100.0
"	Taiwan	57,443	56,088	0.3	-2.4	2,039.7	1,414.4	0.2	-30.7	44.0	47.7	0.2	8.3
"	Thailand	157,744	171,045	1.0	8.4	3,682.6	3,895.7	0.6	5.8	303.6	299.6	1.0	-1.3
"	UK	386,915	391,629	2.3	1.2	7,264.2	6,257.9	1.0	-13.9	4,782.3	5,126.9	17.8	7.2
"	USA	782,862	763,191	4.5	-2.5	22,856.4	14,524.2	2.3	-36.5	2,646.0	2,977.2	10.3	12.5
" (c)	Vanuatu	9,561	..	..	-100.0	-	..	..	..	-	..	..	..
" (c)	Vietnam	696	..	..	-100.0	-	..	..	..	-	..	..	..
" (c)	Western Samoa	471	..	..	-100.0	-	..	..	..	-	..	..	..
" (c)	Zimbabwe	12,807	..	..	-100.0	273.9	..	..	-100.0	8.0	..	..	-100.0
"	ALL SERVICES	5,601,284	5,817,785	34.7	3.9	160,014.9	151,757.7	23.7	-5.2	17,045.9	18,192.2	63.2	6.7
Royal Brunei Airlines	Brunei	73,667	106,891	0.6	45.1	2,347.8	3,017.4	0.5	28.5	0.3	0.4	0.0	46.6
Royal Tongan Airlines (q)	Tonga	5,469	..	..	-100.0	25.5	..	..	-100.0	0.2	..	..	-100.0
Singapore Airlines	Malaysia	..	..	..	..	..	201.7	0.0	..	..	-	-	..
"	New Zealand	..	..	..	..	2,500.6	1,882.5	0.3	-24.7	-	-	-	..
"	Singapore	1,735,694	1,853,141	11.0	6.8	100,636.3	97,240.6	15.2	-3.4	1,895.4	1,515.9	5.3	-20.0
"	ALL SERVICES	1,735,694	1,853,141	11.0	6.8	103,136.9	99,324.7	15.5	-3.7	1,895.4	1,515.9	5.3	-20.0
Solomon Airlines (r)	Solomon Islands	11,923	7,245	0.0	-39.2	287.5	113.9	0.0	-60.4	2.2	-	-	-100.0
South African Airways	South Africa	91,357	84,761	0.5	-7.2	3,622.4	2,511.5	0.4	-30.7	64.4	36.5	0.1	-43.3
SriLankan Airlines (s)	Sri Lanka	55,856	31,124	0.2	-44.3	2,447.5	1,240.8	0.2	-49.3	2.9	3.1	0.0	8.4
Swissair (c)	Singapore	3,061	..	..	-100.0	-	..	..	..	-	..	..	..
Thai Airways International	New Zealand	87,672	119,782	0.7	36.6	4,791.1	7,918.6	1.2	65.3	-	3.6	0.0	..
"	Thailand	456,166	527,291	3.1	15.6	15,733.2	17,275.7	2.7	9.8	725.7	788.9	2.7	8.7
"	ALL SERVICES	543,838	647,073	3.9	19.0	20,524.3	25,194.3	3.9	22.8	725.7	792.5	2.8	9.2
United Airlines	American Samoa	..	290	0.0	..	..	1.3	0.0	..	..	0.8	0.0	..
"	New Zealand	435	44,374	0.3	>999.9	12.5	2,764.8	0.4	>999.9	-	16.2	0.1	..
"	USA	550,487	471,041	2.8	-14.4	12,249.4	10,093.9	1.6	-17.6	2,617.8	1,973.2	6.9	-24.6
"	ALL SERVICES	550,922	515,705	3.1	-6.4	12,261.9	12,860.1	2.0	4.9	2,617.8	1,990.1	6.9	-24.0
United Parcel Service	USA	..	..	..	..	3,816.3	4,300.2	0.7	12.7	-	-	-	..
Vietnam Airlines (t)	Vietnam	41,609	74,755	0.4	79.7	819.2	1,479.3	0.2	80.6	9.4	26.4	0.1	179.2
TOTAL		16,487,674	16,782,522	100.0	1.8	680,010.1	640,101.7	100.0	-5.9	28,974.2	28,768.7	100.0	-0.7

TABLE 2: SCHEDULED OPERATOR MARKET SHARES AND GROWTH: Year ended December

Scheduled Operators	Country to/from	Total Passengers			Total Freight (tonnes)			Total Mail (tonnes)		
		2000	2001	(%) of TOTAL Change	2000	2001	(%) of TOTAL Change	2000	2001	(%) of TOTAL Change

Please refer to explanatory notes - Revenue passenger definition in particular.

- (a) Nil Operations for July 2001 to November 2001.
- (b) Air Canada took over Canadian Airlines International's operations from January 2001 onwards.
- (c) Reporting of traffic split by airline code for code share arrangements was discontinued as of June 2000.
- (d) Service ceased October 2000. No data received for July 2000 to October 2000.
- (e) Service ceased September 2001.
- (f) Service ceased November 2000. No data received for June 2000 to November 2000.
- (g) China Airlines took over Mandarin Airlines' operations from March 2000.
- (h) Service recommenced December 2000.
- (i) Service ceased May 2000.
- (j) Traffic carried on behalf of Qantas Airways.
- (k) Service ceased March 2001.
- (l) No outbound freight data for September 2000 onwards. No inbound freight data for April 2001 onwards.
- (m) Service recommenced March 2001.
- (n) Nil operations for May and July 2001. No data for August 2001 onwards.
- (o) Service recommenced June 2000.
- (p) No data for November and December 2000.
- (q) Services in own right ceased in December 2000.
- (r) Latest data received is for June 2001.
- (s) Service ceased July 2001.
- (t) No inbound data for March 2000 to May 2000 and no inbound data for Sydney for June and July 2000.

TABLE 3: AIRLINE PASSENGER CAPACITY AND UTILISATION TO AND FROM AUSTRALIA BY OPERATOR: Year ended December 2001

Scheduled Operator	Service to/from	Inbound				Outbound			
		No. of Flights	Pax Carried	Seats Available	Seat Utilisation %	No. of Flights	Pax Carried	Seats Available	Seat Utilisation %
Aerolineas Argentinas (a)	Argentina	54	7,964	12,802	62.2	54	9,389	12,802	73.3
Air Caledonie	New Caledonia	333	36,032	48,692	74.0	332	36,232	48,492	74.7
Air Canada	Canada	376	56,483	79,883	70.7	374	57,873	79,032	73.2
Air China	China	260	55,637	91,898	60.5	262	49,966	92,694	53.9
"	New Zealand	17	2,575	6,664	38.6	17	1,930	6,664	29.0
"	ALL SERVICES	277	58,212	98,562	59.1	279	51,896	99,358	52.2
Air Mauritius	Mauritius	92	14,332	20,698	69.2	90	13,965	20,110	69.4
Air Nauru	Nauru	87	5,174	11,510	45.0	89	5,007	11,760	42.6
Air New Zealand	New Zealand	6,358	819,500	1,112,966	73.6	6,353	818,390	1,112,911	73.5
"	USA	333	78,775	130,062	60.6	332	74,336	129,820	57.3
"	ALL SERVICES	6,691	898,275	1,243,028	72.3	6,685	892,726	1,242,731	71.8
Air Niugini	Papua New Guinea	903	53,670	107,572	49.9	903	53,374	107,544	49.6
Air Pacific	Fiji	800	123,498	174,945	70.6	800	125,465	174,945	71.7
Air Vanuatu	Vanuatu	451	33,534	56,860	59.0	450	33,182	56,714	58.5
Ansett International (b)	Fiji	74	8,687	12,793	67.9	73	8,836	12,649	69.9
"	Hong Kong	388	71,419	117,477	60.8	392	65,775	118,715	55.4
"	Indonesia	328	36,137	53,409	67.7	327	36,794	53,101	69.3
"	Japan	256	85,574	105,258	81.3	256	83,313	105,258	79.2
"	ALL SERVICES	1,046	201,817	288,937	69.8	1,048	194,718	289,723	67.2
Asian Express Airlines (c)	New Zealand	219	..	-	..	220	..	-	..
Asiana Airlines	Korea	362	61,845	85,976	71.9	362	58,269	85,976	67.8
British Airways	UK	973	251,904	363,219	69.4	970	229,874	362,236	63.5
Cargolux Airlines Intl (c)	Luxembourg	102	-	-	..	-	..	-	..
"	New Zealand	-	..	-	..	102	-	-	..
"	ALL SERVICES	102	-	-	..	102	-	-	..
Cathay Pacific Airways	Hong Kong	1,496	300,122	431,315	69.6	1,496	286,659	431,315	66.5
China Airlines	New Zealand	130	16,422	37,128	44.2	130	14,856	37,128	40.0
"	Taiwan	161	27,013	44,580	60.6	161	25,746	44,580	57.8
"	ALL SERVICES	291	43,435	81,708	53.2	291	40,602	81,708	49.7
China Eastern Airlines	China	154	30,813	44,198	69.7	154	29,417	44,198	66.6
China Southern Airlines	China	163	29,857	47,720	62.6	163	29,461	47,720	61.7
Continental Micronesia	Guam	104	10,562	15,892	66.5	104	10,846	15,892	68.2
EgyptAir	Egypt	104	19,167	27,040	70.9	104	18,646	27,040	69.0
Emirates	United Arab Emirates	574	123,794	185,597	66.7	574	122,313	185,597	65.9
Eva Air	Taiwan	200	37,554	54,239	69.2	200	35,709	54,239	65.8
Evergreen Intl Airlines (c)	USA	136	..	..	..	-	..	-	..
Federal Express Corporation (c)	Philippines	-	..	-	..	261	..	-	..
"	USA	261	..	-	..	-	..	-	..
"	ALL SERVICES	261	-	-	..	261	-	-	..
Freedom Air International	New Zealand	1,289	122,435	170,654	71.7	1,287	119,955	180,636	66.4
Garuda Indonesia	Indonesia	1,215	195,235	308,243	63.3	1,215	199,623	308,403	64.7
"	New Zealand	103	13,847	30,179	45.9	103	12,401	30,179	41.1
"	ALL SERVICES	1,318	209,082	338,422	61.8	1,318	212,024	338,582	62.6
Gulf Air	Bahrain	199	42,531	58,307	72.9	199	43,153	58,307	74.0

TABLE 3: AIRLINE PASSENGER CAPACITY AND UTILISATION TO AND FROM AUSTRALIA BY OPERATOR: Year ended December 2001

Scheduled Operator	Service to/from	Inbound				Outbound			
		No. of Flights	Pax Carried	Seats Available	Seat Utilisation %	No. of Flights	Pax Carried	Seats Available	Seat Utilisation %
Gulf Air	United Arab Emirates	24	4,737	7,032	67.4	24	3,011	7,032	42.8
"	ALL SERVICES	223	47,268	65,339	72.3	223	46,164	65,339	70.7
Japan Airlines	Japan	1,098	353,838	456,358	77.5	1,098	354,145	454,477	77.9
KLM Royal Dutch Airlines (d)	Netherlands	36	10,331	13,612	75.9	36	11,968	13,612	87.9
Korean Air	Korea	495	111,225	143,325	77.6	495	108,101	143,284	75.4
Lauda Air	Austria	259	63,121	89,096	70.8	259	72,260	89,096	81.1
Lufthansa German Airlines (c) (e)	Germany	110	..	-	..	110	..	-	..
Malaysia Airlines	Malaysia	2,188	470,246	685,089	68.6	2,183	453,959	684,687	66.3
Martinair Holland (c)	Netherlands	105	..	-	..	99	..	-	..
Merpati Nusantara Airlines (f)	East Timor	1	66	91	72.5	1	80	91	87.9
"	Indonesia	15	541	1,350	40.1	15	412	1,350	30.5
"	ALL SERVICES	16	607	1,441	42.1	16	492	1,441	34.1
Olympic Airways	Greece	148	33,550	43,660	76.8	148	33,653	43,660	77.1
Philippine Airlines	Philippines	160	26,318	45,320	58.1	160	23,863	45,320	52.7
Polar Air Cargo (c)	USA	116	..	-	..	-	..	-	..
Polynesian Airlines	Tahiti	34	2,265	5,236	43.3	67	6,371	10,318	61.7
"	Western Samoa	143	11,462	21,734	52.7	67	5,672	10,030	56.6
"	ALL SERVICES	177	13,727	26,970	50.9	134	12,043	20,348	59.2
Qantas Airways	Argentina	114	34,830	44,802	77.7	113	38,232	44,407	86.1
"	China	60	10,682	13,629	78.4	60	9,346	13,575	68.8
"	France	157	47,611	58,399	81.5	156	40,289	58,347	69.1
"	Germany	365	111,192	145,022	76.7	365	100,854	145,152	69.5
"	Hong Kong	1,273	280,718	350,138	80.2	1,290	260,596	349,374	74.6
"	India	351	52,401	97,647	53.7	352	69,241	97,589	71.0
"	Indonesia	937	182,167	238,681	76.3	934	178,769	237,978	75.1
"	Italy	208	68,958	87,545	78.8	208	65,457	87,509	74.8
"	Japan	1,314	357,007	494,666	72.2	1,312	355,089	494,569	71.8
"	New Caledonia	205	24,864	35,208	70.6	203	23,227	34,696	66.9
"	New Zealand	4,572	728,608	926,508	78.6	4,572	732,046	926,536	79.0
"	Papua New Guinea	162	22,640	37,940	59.7	162	24,387	37,920	64.3
"	Philippines	208	43,321	53,613	80.8	208	41,128	53,314	77.1
"	Singapore	1,500	275,183	360,872	76.3	1,504	275,928	361,438	76.3
"	South Africa	259	71,778	95,461	75.2	259	63,792	90,693	70.3
"	Taiwan	144	30,117	38,980	77.3	144	28,591	38,931	73.4
"	UK	920	286,823	359,632	79.8	920	288,826	359,790	80.3
"	USA	1,953	460,068	647,825	71.0	1,952	476,644	661,440	72.1
"	ALL SERVICES	14,702	3,088,968	4,086,568	75.6	14,714	3,072,442	4,093,258	75.1
Royal Brunei Airlines	Brunei	381	52,416	80,130	65.4	381	54,475	80,130	68.0
Singapore Airlines	Singapore	3,772	929,712	1,219,672	76.2	3,769	923,429	1,219,672	75.7
Solomon Airlines (g)	Solomon Islands	59	3,656	7,725	47.3	59	3,589	7,702	46.6
South African Airways	South Africa	232	46,047	65,839	69.9	232	38,714	65,850	58.8
SriLankan Airlines (h)	Sri Lanka	90	17,118	28,018	61.1	90	14,006	28,018	50.0
Thai Airways International	New Zealand	362	63,186	137,403	46.0	362	56,596	137,403	41.2
"	Thailand	1,249	266,116	432,992	61.5	1,246	261,175	432,029	60.5



TABLE 3: AIRLINE PASSENGER CAPACITY AND UTILISATION TO AND FROM AUSTRALIA BY OPERATOR: Year ended December 2001

Scheduled Operator	Service to/from	Inbound				Outbound			
		No. of Flights	Pax Carried	Seats Available	Seat Utilisation %	No. of Flights	Pax Carried	Seats Available	Seat Utilisation %
Thai Airways International	ALL SERVICES	1,611	329,302	570,395	57.7	1,608	317,771	569,432	55.8
United Airlines	USA	1,081	255,070	394,193	64.7	1,079	260,635	393,474	66.2
United Parcel Service (c)	USA	104	..	-	..	-	..	-	..
Vietnam Airlines	Vietnam	213	38,745	57,544	67.3	210	36,010	56,800	63.4
<b>TOTAL</b>		<b>46,232</b>	<b>8,620,826</b>	<b>12,069,763</b>	<b>71.4</b>	<b>45,813</b>	<b>8,505,321</b>	<b>12,073,950</b>	<b>70.4</b>

NOTE 1: Some flights out of Australia are non-scheduled and therefore outbound activity is not recorded (see Explanatory Notes, paragraphs 4 and 5).

NOTE 2: Traffic shown in this table for airlines which fly through Australia may differ from traffic in Tables 1 and 2 because of the inclusion in this table of total traffic into and ex Australia (for seat factor purposes) whereas Tables 1 and 2 include uplift/discharge traffic only.

(a) Nil Operations for July 2001 to November 2001.

(b) Service ceased September 2001.

(c) Freight flights only.

(d) Service ceased March 2001.

(e) Service recommenced March 2001.

(f) Nil operations for May and July 2001. No data for August 2001 onwards.

(g) Latest data received is for June 2001.

(h) Service ceased July 2001.

TABLE 4: SCHEDULED INTERNATIONAL AIRPORT TRAFFIC AND AIRCRAFT MOVEMENTS: Year ended December

		Inbound		Outbound			Total			Change	TOTAL
		2000	2001	(%) Change	2000	2001	(%) Change	2000	2001		
Adelaide	Passengers	139,535	124,299	-10.9	130,564	117,483	-10.0	270,099	241,782	-10.5	1.4
"	Freight (Tonnes)	4,410	3,743	-15.1	7,755	8,104	4.5	12,165	11,846	-2.6	1.9
"	Aircraft Movements	947	879	-7.2	974	937	-3.8	1,921	1,816	-5.5	1.7
Brisbane	Passengers	1,309,606	1,345,465	2.7	1,151,772	1,194,893	3.7	2,461,378	2,540,358	3.2	15.1
"	Freight (Tonnes)	28,682	25,356	-11.6	50,404	51,049	1.3	79,087	76,405	-3.4	11.9
"	Aircraft Movements	8,912	8,710	-2.3	8,680	8,637	-0.5	17,592	17,347	-1.4	15.8
Broome	Passengers	1,426	1,192	-16.4	1,457	1,145	-21.4	2,883	2,337	-18.9	0.0
"	Freight (Tonnes)	-	-	..	-	-	..	-	-	..	..
"	Aircraft Movements	39	29	-25.6	39	29	-25.6	78	58	-25.6	0.1
Cairns	Passengers	341,270	333,731	-2.2	338,863	331,064	-2.3	680,133	664,795	-2.3	4.0
"	Freight (Tonnes)	1,700	1,678	-1.3	6,929	7,428	7.2	8,629	9,105	5.5	1.4
"	Aircraft Movements	3,193	2,971	-7.0	3,166	2,933	-7.4	6,359	5,904	-7.2	5.4
Coolangatta	Passengers	14,598	20,931	43.4	13,540	20,650	52.5	28,138	41,581	47.8	0.2
"	Freight (Tonnes)	-	-	..	-	-	..	-	-	..	..
"	Aircraft Movements	147	224	52.4	147	223	51.7	294	447	52.0	0.4
Darwin	Passengers	87,913	79,041	-10.1	81,583	72,553	-11.1	169,496	151,594	-10.6	0.9
"	Freight (Tonnes)	769	634	-17.6	730	1,072	46.8	1,500	1,706	13.8	0.3
"	Aircraft Movements	1,945	1,434	-26.3	1,946	1,434	-26.3	3,891	2,868	-26.3	2.6
Melbourne	Passengers	1,518,891	1,666,962	9.7	1,524,738	1,644,899	7.9	3,043,629	3,311,861	8.8	19.7
"	Freight (Tonnes)	98,231	82,906	-15.6	101,252	97,604	-3.6	199,483	180,510	-9.5	28.2
"	Aircraft Movements	10,740	11,656	8.5	10,858	11,765	8.4	21,598	23,421	8.4	21.4
Newcastle	Passengers	..	493	..	..	561	..	-	1,054	..	0.0
"	Freight (Tonnes)	..	-	..	..	-	..	-	-	..	..
"	Aircraft Movements	..	5	..	..	5	..	-	10	..	0.0
Norfolk Island	Passengers	7,040	8,306	18.0	7,033	8,061	14.6	14,073	16,367	16.3	0.1
"	Freight (Tonnes)	136	113	-16.6	15	17	18.3	150	130	-13.2	0.0
"	Aircraft Movements	105	106	1.0	105	104	-1.0	210	210	..	0.2
Perth	Passengers	810,998	813,857	0.4	769,624	773,231	0.5	1,580,622	1,587,088	0.4	9.5
"	Freight (Tonnes)	14,203	14,062	-1.0	36,043	40,639	12.8	50,246	54,701	8.9	8.5
"	Aircraft Movements	5,051	4,577	-9.4	5,052	4,564	-9.7	10,103	9,141	-9.5	8.3

TABLE 4: SCHEDULED INTERNATIONAL AIRPORT TRAFFIC AND AIRCRAFT MOVEMENTS: Year ended December

		Inbound		Change	Outbound		Change	Total		Change	TOTAL
		2000	2001		2000	2001		2000	2001		
Sydney	Passengers	4,033,463	4,047,322	0.3	4,203,760	4,176,236	-0.7	8,237,223	8,223,558	-0.2	49.0
"	Freight (Tonnes)	183,965	161,231	-12.4	144,786	144,465	-0.2	328,751	305,697	-7.0	47.8
"	Aircraft Movements	25,117	24,420	-2.8	24,691	23,934	-3.1	49,808	48,354	-2.9	44.1
Townsville	Passengers	..	68	..	..	79	..	-	147	..	0.0
"	Freight (Tonnes)	..	-	..	..	0	..	-	0	..	0.0
"	Aircraft Movements	..	18	..	..	16	..	-	34	..	0.0
TOTAL	Passengers	8,264,740	8,441,667	2.1	8,222,934	8,340,855	1.4	16,487,674	16,782,522	1.8	100.0
	Freight (Tonnes)	332,095	289,723	-12.8	347,915	350,379	0.7	680,010	640,102	-5.9	100.0
	Aircraft Movements	56,196	55,029	-2.1	55,658	54,581	-1.9	111,854	109,610	-2.0	100.0

Please refer to explanatory notes - Revenue passenger definition in particular.

TABLE 5: SCHEDULED INTERNATIONAL TRAFFIC BY CITY PAIRS: Year ended December

Foreign Port	Australian Port	Passengers						Freight (tonnes)					
		2000			2001			2000			2001		
		Inbound	Outbound	Total	Inbound	Outbound	Total	Inbound	Outbound	Total	Inbound	Outbound	Total
Atlanta	Adelaide	0	0	0	0	0	0	6.9	0.0	6.9	0.0	0.0	0.0
Auckland	"	203	1,189	1,392	32	867	899	232.7	156.5	389.3	150.4	160.7	311.1
Bangkok	"	11	7	18	28	4	32	16.7	44.7	61.4	11.0	78.5	89.5
Bombay	"	236	4	240	114	34	148	15.8	0.0	15.8	4.6	0.0	4.6
Buenos Aires	"	30	221	251	0	91	91	8.4	11.3	19.7	0.3	11.5	11.8
Chicago	"	0	0	0	0	0	0	22.4	0.0	22.4	0.0	0.0	0.0
Christchurch	"	47	15	62	141	12	153	50.9	61.4	112.4	46.3	46.5	92.9
Denpasar	"	12,786	13,520	26,306	14,436	14,658	29,094	88.1	217.1	305.2	150.3	193.8	344.0
Frankfurt	"	3,627	3,134	6,761	2,464	1,686	4,150	7.8	27.7	35.4	12.2	2.5	14.7
Harare	"	0	0	0	0	0	0	1.3	0.6	1.9	0.0	0.0	0.0
Ho Chi Minh City	"	0	2	2	0	0	0	0.0	0.0	0.0	0.0	0.0	0.0
Hong Kong	"	12,865	9,808	22,673	12,511	9,537	22,048	414.3	653.5	1,067.8	447.8	613.8	1,061.5
Honolulu	"	68	264	332	111	242	353	0.0	9.3	9.3	0.0	5.7	5.7
Jakarta	"	173	135	308	180	135	315	7.5	20.8	28.4	11.9	8.7	20.6
Johannesburg	"	0	0	0	0	0	0	20.0	7.6	27.5	15.1	14.9	29.9
Kuala Lumpur	"	37,792	37,542	75,334	33,613	32,313	65,926	783.7	1,253.8	2,037.5	728.2	1,388.7	2,116.9
London	"	6,849	6,731	13,580	4,215	3,910	8,125	37.0	30.9	67.9	46.5	45.7	92.2
Los Angeles	"	275	186	461	128	126	254	30.7	386.4	417.1	16.1	273.1	289.3
Manila	"	32	77	109	62	86	148	12.9	0.6	13.5	12.2	0.5	12.7
Nadi	"	22	15	37	0	0	0	4.4	0.0	4.5	0.0	0.0	0.0
Nagoya	"	147	21	168	78	23	101	49.3	17.7	67.0	30.2	8.8	39.0
New York	"	36	46	82	14	14	28	37.0	36.7	73.7	6.2	22.9	29.1
Noumea	"	2	0	2	0	0	0	0.0	0.5	0.5	0.0	0.7	0.7
Osaka	"	18	3	21	1	0	1	0.0	0.0	0.0	0.0	0.0	0.0
Papeete	"	6	4	10	0	0	0	0.3	2.4	2.7	0.0	0.0	0.0
Paris	"	468	47	515	26	361	387	13.9	170.6	184.5	6.5	26.1	32.6
Port Moresby	"	0	0	0	0	0	0	2.2	0.3	2.5	2.6	3.0	5.6
Port Vila	"	8	0	8	0	0	0	0.0	0.0	0.0	0.0	0.0	0.0
Rome	"	24	0	24	0	1	1	30.3	0.1	30.4	14.7	0.2	14.9
Seoul	"	12	0	12	0	0	0	0.0	0.0	0.0	0.0	0.0	0.0
Shanghai	"	25	0	25	0	4	4	19.1	0.9	20.1	5.2	0.3	5.5
Singapore	"	63,599	57,380	120,979	56,021	53,302	109,323	2,298.1	4,219.0	6,517.1	1,842.7	4,679.9	6,522.6
Taipei	"	0	17	17	0	27	27	0.8	20.1	20.9	0.1	0.5	0.6
Tokyo	"	33	6	39	83	6	89	178.3	354.2	532.5	175.8	507.6	683.4
Toledo	"	0	0	0	0	0	0	5.4	0.0	5.4	0.0	0.0	0.0
Toronto	"	2	61	63	0	0	0	4.1	22.8	26.9	0.0	0.0	0.0
Vancouver	"	36	46	82	8	31	39	0.0	17.7	17.7	1.9	7.2	9.1
Wellington	"	19	23	42	33	13	46	9.3	9.2	18.5	3.9	1.8	5.7
Zurich	"	84	60	144	0	0	0	0.0	0.0	0.0	0.0	0.0	0.0
<b>Total</b>	<b>Adelaide</b>	<b>139,535</b>	<b>130,564</b>	<b>270,099</b>	<b>124,299</b>	<b>117,483</b>	<b>241,782</b>	<b>4,409.9</b>	<b>7,754.6</b>	<b>12,164.5</b>	<b>3,742.9</b>	<b>8,103.6</b>	<b>11,846.5</b>
Apia	Brisbane	2	24	26	0	0	0	0.0	0.0	0.0	0.0	0.0	0.0
Atlanta	"	0	0	0	0	0	0	134.1	0.0	134.1	28.1	0.0	28.1
Auckland	"	226,757	236,739	463,496	241,314	246,683	487,997	6,227.5	8,416.2	14,643.6	6,383.7	8,207.3	14,591.0
Bandar Seri Begawan	"	17,357	19,197	36,554	25,192	26,752	51,944	274.0	1,198.7	1,472.7	351.0	1,523.1	1,874.1

TABLE 5: SCHEDULED INTERNATIONAL TRAFFIC BY CITY PAIRS: Year ended December

Foreign Port	Australian Port	Passengers						Freight (tonnes)					
		2000			2001			2000			2001		
		Inbound	Outbound	Total	Inbound	Outbound	Total	Inbound	Outbound	Total	Inbound	Outbound	Total
Bangkok	Brisbane	24,600	27,020	51,620	31,901	32,088	63,989	599.8	919.3	1,519.1	514.1	1,249.9	1,764.0
Bombay	"	479	391	870	2,215	895	3,110	26.2	5.4	31.6	34.7	2.1	36.8
Buenos Aires	"	1,967	357	2,324	2,518	111	2,629	9.4	4.7	14.1	0.9	1.3	2.2
Chicago	"	0	0	0	0	0	0	186.1	0.0	186.1	56.2	0.0	56.2
Christchurch	"	80,831	78,401	159,232	96,505	95,766	192,271	1,597.3	2,162.0	3,759.3	1,251.8	1,837.7	3,089.5
Denpasar	"	27,253	27,018	54,271	24,415	24,747	49,162	530.5	397.3	927.8	461.4	401.3	862.6
Dili	"	0	0	0	0	0	0	0.3	0.3	0.6	0.0	0.0	0.0
Dunedin	"	13,082	13,141	26,223	14,496	14,673	29,169	0.0	0.0	0.0	0.0	0.0	0.0
Frankfurt	"	2,167	1,440	3,607	4,578	5,098	9,676	173.3	108.6	282.0	84.0	4.8	88.8
Fukuoka	"	195	0	195	192	0	192	0.0	0.0	0.0	0.0	0.0	0.0
Hamilton	"	21,935	22,008	43,943	22,921	22,964	45,885	0.0	0.0	0.0	0.0	0.0	0.0
Harare	"	294	84	378	0	0	0	15.5	1.6	17.1	0.0	0.0	0.0
Ho Chi Minh City	"	0	10	10	0	0	0	0.0	0.0	0.0	0.0	0.0	0.0
Hong Kong	"	62,196	57,374	119,570	60,020	55,787	115,807	1,580.7	3,877.5	5,458.2	1,784.5	4,239.6	6,024.0
Honiara	"	7,268	7,190	14,458	3,656	3,589	7,245	151.0	139.4	290.4	55.5	58.4	113.9
Honolulu	"	1,902	448	2,350	640	369	1,009	11.8	90.8	102.6	5.5	50.1	55.5
Jakarta	"	2,270	473	2,743	1,835	726	2,561	18.5	473.7	492.1	2.5	195.1	197.6
Johannesburg	"	793	196	989	0	221	221	153.2	16.1	169.2	82.0	10.3	92.3
Kuala Lumpur	"	74,077	70,574	144,651	66,224	63,251	129,475	2,240.9	1,736.1	3,977.0	2,333.0	2,533.7	4,866.8
London	"	37,444	37,311	74,755	14,748	13,158	27,906	485.3	249.4	734.6	175.0	46.7	221.8
Los Angeles	"	28,563	22,199	50,762	31,388	27,611	58,999	763.5	492.5	1,256.0	790.7	449.3	1,240.0
Manila	"	7,104	7,608	14,712	5,327	5,393	10,720	24.2	283.1	307.3	13.5	144.2	157.7
Nadi	"	16,773	15,637	32,410	19,580	19,976	39,556	200.2	253.8	454.0	165.5	254.0	419.5
Nagoya	"	15,854	8,085	23,939	7,876	701	8,577	12.5	186.5	199.0	14.4	260.1	274.5
Nauru	"	4,957	4,477	9,434	3,492	3,273	6,765	6.3	160.6	166.9	10.5	149.3	159.8
New York	"	251	124	375	242	76	318	260.0	84.6	344.6	113.1	58.7	171.8
Noumea	"	13,264	13,738	27,002	14,076	15,085	29,161	20.2	138.3	158.6	14.7	147.7	162.4
Osaka	"	166,406	25,453	191,859	154,267	27,644	181,911	3,077.0	2,350.5	5,427.5	1,949.8	2,691.7	4,641.5
Palmerston	"	14,665	14,110	28,775	13,195	13,582	26,777	0.0	0.0	0.0	0.0	0.0	0.0
Papeete	"	1,012	364	1,376	0	0	0	1.7	5.6	7.3	0.0	0.0	0.0
Paris	"	450	926	1,376	2,463	2,760	5,223	31.8	128.0	159.8	16.5	29.6	46.0
Port Moresby	"	30,390	33,013	63,403	33,784	36,911	70,695	292.6	1,573.3	1,866.0	967.9	1,924.7	2,892.6
Port Vila	"	11,635	11,841	23,476	11,037	10,868	21,905	31.5	146.4	177.9	33.4	156.9	190.4
Queenstown	"	1,123	1,476	2,599	2,106	2,162	4,268	0.0	0.0	0.0	0.0	0.0	0.0
Rome	"	156	69	225	114	2	116	32.7	2.3	35.0	6.7	1.1	7.9
San Francisco	"	0	0	0	0	0	0	12.7	0.0	12.7	0.0	0.0	0.0
Seoul	"	21,187	18,456	39,643	24,549	20,767	45,316	850.2	1,798.3	2,648.5	517.6	1,329.1	1,846.7
Shanghai	"	412	499	911	222	100	322	50.7	26.1	76.8	6.9	22.6	29.5
Singapore	"	166,744	161,368	328,112	207,126	202,189	409,315	4,577.0	13,763.9	18,341.0	3,829.3	14,463.5	18,292.8
Suva	"	11	0	11	0	0	0	0.0	0.0	0.0	0.0	0.0	0.0
Taipei	"	51,893	51,946	103,839	37,802	35,982	73,784	1,671.2	2,628.3	4,299.5	1,243.9	1,835.5	3,079.4
Tokyo	"	111,164	118,754	229,918	115,328	116,140	231,468	2,182.2	6,416.8	8,599.1	1,982.6	6,716.8	8,699.4
Toledo	"	0	0	0	0	0	0	50.4	0.0	50.4	25.2	0.0	25.2
Toronto	"	215	63	278	0	0	0	17.6	21.3	38.9	0.0	0.0	0.0

TABLE 5: SCHEDULED INTERNATIONAL TRAFFIC BY CITY PAIRS: Year ended December

Foreign Port	Australian Port	Passengers						Freight (tonnes)					
		2000			2001			2000			2001		
		Inbound	Outbound	Total	Inbound	Outbound	Total	Inbound	Outbound	Total	Inbound	Outbound	Total
Vancouver	Brisbane	590	240	830	236	293	529	1.0	45.7	46.7	1.4	0.3	1.7
Wellington	"	41,912	41,925	83,837	47,885	46,500	94,385	99.5	101.6	201.1	48.5	52.6	101.1
Zurich	"	6	5	11	0	0	0	0.0	0.0	0.0	0.0	0.0	0.0
<b>Total</b>	<b>Brisbane</b>	1,309,606	1,151,772	2,461,378	1,345,465	1,194,893	2,540,358	28,682.1	50,404.4	79,086.5	25,356.0	51,049.1	76,405.1
Denpasar	Broome	1,426	1,457	2,883	1,192	1,145	2,337	0.0	0.0	0.0	0.0	0.0	0.0
<b>Total</b>	<b>Broome</b>	1,426	1,457	2,883	1,192	1,145	2,337	0.0	0.0	0.0	0.0	0.0	0.0
Atlanta	Cairns	0	0	0	0	0	0	0.3	0.0	0.3	0.0	0.0	0.0
Auckland	"	12,365	13,598	25,963	9,624	14,973	24,597	236.9	94.4	331.3	145.0	37.2	182.3
Bangkok	"	39	130	169	321	79	400	2.6	2.7	5.2	0.6	3.4	4.0
Bombay	"	870	55	925	676	284	960	6.0	0.1	6.1	8.0	0.1	8.1
Buenos Aires	"	108	271	379	26	289	315	0.4	0.6	1.0	0.0	0.0	0.0
Chicago	"	0	0	0	0	0	0	1.4	0.0	1.4	0.0	0.0	0.0
Christchurch	"	1,262	686	1,948	1,695	1,631	3,326	25.0	1.3	26.3	14.0	2.6	16.6
Denpasar	"	8,245	8,846	17,091	4,389	4,999	9,388	17.3	3.1	20.4	19.9	1.6	21.5
Dili	"	61	7	68	1	0	1	0.2	6.9	7.1	0.0	1.3	1.3
Frankfurt	"	3,038	8,921	11,959	3,453	8,411	11,864	10.6	6.6	17.1	9.2	3.9	13.1
Fukuoka	"	18	0	18	0	13	13	0.0	0.0	0.0	0.0	0.0	0.0
Guam	"	10,491	10,576	21,067	10,562	10,846	21,408	2.3	19.8	22.1	1.0	39.2	40.2
Harare	"	6	1	7	0	0	0	3.4	0.1	3.5	0.0	0.0	0.0
Hong Kong	"	35,076	22,483	57,559	33,785	23,506	57,291	304.6	2,360.2	2,664.7	244.4	3,147.7	3,392.1
Honiara	"	0	0	0	0	0	0	0.0	0.1	0.1	0.0	0.0	0.0
Honolulu	"	540	988	1,528	76	850	926	12.5	3.1	15.6	0.5	0.3	0.8
Jakarta	"	262	109	371	253	198	451	0.0	5.9	5.9	0.1	14.6	14.7
Johannesburg	"	12	17	29	0	273	273	1.5	0.3	1.8	0.6	0.6	1.2
Kuala Lumpur	"	10,209	14,005	24,214	11,518	14,949	26,467	36.6	194.4	231.1	32.5	174.1	206.6
Lae	"	1,809	0	1,809	0	0	0	4.1	0.0	4.1	0.0	0.0	0.0
London	"	7,273	8,882	16,155	7,030	9,032	16,062	1.0	15.3	16.4	1.2	14.6	15.8
Los Angeles	"	4,318	4,639	8,957	4,074	4,596	8,670	11.2	177.0	188.1	9.3	227.9	237.2
Manila	"	204	58	262	76	71	147	0.0	4.3	4.3	0.0	8.3	8.3
Mount Hagen	"	0	2,026	2,026	0	0	0	0.0	16.4	16.4	0.0	0.0	0.0
Nadi	"	1	342	343	0	0	0	0.2	0.1	0.3	0.0	0.0	0.0
Nagoya	"	48,538	37,752	86,290	64,692	50,215	114,907	14.2	493.8	508.0	52.4	392.9	445.2
New York	"	7	175	182	4	207	211	3.2	16.7	19.9	0.0	10.6	10.6
Noumea	"	4	23	27	0	3	3	0.0	0.9	0.9	0.0	0.8	0.8
Osaka	"	377	277	654	6,759	5,347	12,106	0.0	0.0	0.0	112.1	230.9	343.0
Papeete	"	8	75	83	0	0	0	0.0	1.4	1.5	0.0	0.0	0.0
Paris	"	1,100	2,995	4,095	859	2,536	3,395	5.9	7.1	13.0	1.8	0.2	2.0
Port Moresby	"	36,147	33,479	69,626	28,767	27,415	56,182	701.5	565.4	1,266.9	387.1	425.8	813.0
Port Vila	"	0	6	6	0	0	0	0.0	0.0	0.0	0.0	0.0	0.0
Queenstown	"	0	0	0	4	7	11	0.0	0.0	0.0	0.0	0.0	0.0
Rome	"	10	70	80	70	41	111	0.2	0.1	0.3	1.3	0.2	1.5
San Francisco	"	0	0	0	0	0	0	0.0	0.0	0.0	0.0	0.0	0.0
Seoul	"	2	0	2	0	0	0	0.0	0.0	0.0	0.0	0.0	0.0
Shanghai	"	0	113	113	0	18	18	0.0	0.1	0.1	0.0	0.0	0.0

TABLE 5: SCHEDULED INTERNATIONAL TRAFFIC BY CITY PAIRS: Year ended December

Foreign Port	Australian Port	Passengers						Freight (tonnes)					
		2000			2001			2000			2001		
		Inbound	Outbound	Total	Inbound	Outbound	Total	Inbound	Outbound	Total	Inbound	Outbound	Total
Singapore	Cairns	51,552	53,920	105,472	28,677	31,022	59,699	261.6	2,093.2	2,354.8	203.3	1,037.1	1,240.4
Taipei	"	8	21	29	19	43	62	0.0	0.4	0.4	0.1	0.4	0.5
Tokyo	"	106,839	112,622	219,461	115,987	118,265	234,252	31.6	834.2	865.9	432.8	1,650.8	2,083.7
Toledo	"	0	0	0	0	0	0	2.1	0.0	2.1	0.0	0.0	0.0
Toronto	"	62	177	239	0	0	0	0.0	0.4	0.4	0.0	0.0	0.0
Vancouver	"	110	338	448	17	169	186	0.0	2.8	2.8	0.0	0.2	0.2
Wellington	"	246	80	326	317	776	1,093	1.5	0.2	1.6	0.3	0.5	0.8
Zurich	"	53	100	153	0	0	0	0.0	0.0	0.0	0.0	0.0	0.0
<b>Total</b>	<b>Cairns</b>	341,270	338,863	680,133	333,731	331,064	664,795	1,700.0	6,929.4	8,629.4	1,677.6	7,427.7	9,105.4
Auckland	Coolangatta	0	0	0	3,055	3,123	6,178	0.0	0.0	0.0	0.0	0.0	0.0
Hamilton	"	9,393	8,618	18,011	9,639	9,481	19,120	0.0	0.0	0.0	0.0	0.0	0.0
Noumea	"	0	0	0	1,100	1,127	2,227	0.0	0.0	0.0	0.0	0.0	0.0
Palmerston	"	5,205	4,922	10,127	7,137	6,919	14,056	0.0	0.0	0.0	0.0	0.0	0.0
<b>Total</b>	<b>Coolangatta</b>	14,598	13,540	28,138	20,931	20,650	41,581	0.0	0.0	0.0	0.0	0.0	0.0
Atlanta	Darwin	0	0	0	0	0	0	4.4	0.0	4.4	0.0	0.0	0.0
Auckland	"	52	0	52	165	58	223	46.8	10.6	57.4	31.0	8.4	39.4
Bandar Seri Begawan	"	4,513	4,627	9,140	5,804	5,984	11,788	81.1	20.6	101.8	56.7	27.9	84.6
Bangkok	"	0	0	0	0	0	0	13.7	0.3	13.9	8.6	1.2	9.8
Bombay	"	86	11	97	115	85	200	3.4	0.1	3.5	15.7	0.0	15.7
Buenos Aires	"	0	0	0	0	0	0	0.0	0.9	0.9	0.0	0.3	0.3
Chicago	"	0	0	0	0	0	0	1.8	0.0	1.8	0.0	0.0	0.0
Christchurch	"	5	0	5	4	39	43	2.5	0.7	3.2	2.9	2.5	5.4
Denpasar	"	25,805	27,599	53,404	22,473	24,104	46,577	35.8	1.7	37.4	27.8	2.2	30.0
Dili	"	4,635	4,819	9,454	788	917	1,705	3.0	17.5	20.5	0.8	0.8	1.5
Frankfurt	"	5,840	3,703	9,543	6,024	4,339	10,363	32.5	2.8	35.3	12.3	2.5	14.8
Harare	"	0	0	0	0	0	0	0.2	0.4	0.7	0.0	0.0	0.0
Hong Kong	"	661	169	830	866	208	1,074	5.9	158.4	164.2	2.7	140.8	143.5
Honolulu	"	15	0	15	0	0	0	0.3	1.9	2.2	0.8	3.9	4.6
Jakarta	"	200	27	227	207	137	344	3.1	1.0	4.2	1.8	2.2	4.0
Johannesburg	"	0	0	0	0	0	0	4.8	1.6	6.4	3.7	2.6	6.3
Kuala Lumpur	"	13,666	12,351	26,017	12,845	10,683	23,528	179.9	167.8	347.7	185.7	176.5	362.2
Kupang	"	1,414	1,867	3,281	541	412	953	7.0	5.1	12.0	0.6	1.1	1.7
London	"	5,671	4,788	10,459	5,168	4,962	10,130	19.2	15.5	34.7	10.8	25.6	36.3
Los Angeles	"	30	0	30	153	81	234	12.9	17.0	29.9	19.3	22.2	41.5
Manila	"	105	0	105	1	3	4	1.5	0.1	1.6	0.2	0.4	0.6
Nadi	"	0	5	5	0	0	0	0.2	0.0	0.2	0.0	0.0	0.0
Nagoya	"	157	83	240	174	73	247	2.7	1.0	3.7	1.0	0.1	1.1
New York	"	0	0	0	0	0	0	38.6	2.4	41.0	14.8	3.9	18.6
Noumea	"	0	5	5	0	0	0	0.0	0.3	0.3	0.0	0.0	0.0
Osaka	"	2	0	2	10	9	19	0.0	0.0	0.0	0.1	0.0	0.1
Papeete	"	0	0	0	0	0	0	0.0	0.5	0.5	0.0	0.0	0.0
Paris	"	1,292	1,462	2,754	1,284	1,239	2,523	6.5	3.0	9.5	3.0	11.7	14.7
Port Moresby	"	53	48	101	0	0	0	0.0	0.8	0.8	0.0	0.0	0.0
Rome	"	0	2	2	0	2	2	17.7	0.0	17.7	11.9	0.5	12.4

TABLE 5: SCHEDULED INTERNATIONAL TRAFFIC BY CITY PAIRS: Year ended December

Foreign Port	Australian Port	Passengers						Freight (tonnes)					
		2000			2001			2000			2001		
		Inbound	Outbound	Total	Inbound	Outbound	Total	Inbound	Outbound	Total	Inbound	Outbound	Total
Shanghai	Darwin	0	0	0	0	0	0	0.0	0.5	0.5	0.0	0.0	0.0
Singapore	"	23,165	19,601	42,766	21,934	18,960	40,894	228.1	280.6	508.7	215.7	617.0	832.7
Taipei	"	0	0	0	0	0	0	0.0	0.0	0.0	0.0	0.0	0.0
Tokyo	"	462	281	743	457	249	706	12.2	9.1	21.3	5.0	14.5	19.5
Toronto	"	1	0	1	0	0	0	0.5	2.9	3.4	0.0	0.0	0.0
Vancouver	"	0	0	0	2	0	2	0.2	2.6	2.9	0.8	3.0	3.8
Wellington	"	13	37	50	26	9	35	2.9	2.7	5.6	0.5	0.4	0.9
Zurich	"	70	98	168	0	0	0	0.0	0.0	0.0	0.0	0.0	0.0
<b>Total</b>	<b>Darwin</b>	87,913	81,583	169,496	79,041	72,553	151,594	769.3	730.5	1,499.8	633.9	1,072.2	1,706.1
Abu Dhabi	Melbourne	6,211	2,624	8,835	4,737	2,137	6,874	262.6	391.9	654.5	71.1	226.0	297.1
Amsterdam	"	0	0	0	0	0	0	0.0	0.0	0.0	0.0	2.0	2.0
Apia	"	630	599	1,229	274	282	556	35.9	13.2	49.1	2.9	6.3	9.2
Athens	"	10,128	9,882	20,010	10,765	11,651	22,416	185.1	73.4	258.5	141.7	90.4	232.1
Atlanta	"	0	0	0	0	0	0	1,747.0	0.0	1,747.0	1,309.3	0.0	1,309.3
Auckland	"	217,079	218,235	435,314	261,097	261,006	522,103	12,228.6	17,342.9	29,571.4	13,155.3	17,199.3	30,354.6
Bahrain	"	17,235	7,692	24,927	13,482	12,335	25,817	528.7	2,076.1	2,604.8	559.4	1,788.2	2,347.6
Bangkok	"	100,380	95,710	196,090	117,061	118,200	235,261	4,009.5	5,402.2	9,411.7	3,786.4	5,838.4	9,624.8
Beijing	"	4,265	2,439	6,704	7,586	3,014	10,600	71.0	123.0	194.0	66.3	181.8	248.0
Bombay	"	3,235	449	3,684	4,814	424	5,238	159.3	182.1	341.4	97.7	71.7	169.4
Buenos Aires	"	4,152	4,506	8,658	4,544	4,459	9,003	55.3	8.7	64.0	21.4	7.0	28.5
Chicago	"	0	0	0	1,924	1,837	3,761	3,416.9	0.0	3,416.9	3,098.8	0.0	3,098.8
Christchurch	"	82,681	77,572	160,253	88,332	82,895	171,227	3,371.2	2,007.1	5,378.3	2,879.4	2,021.9	4,901.3
Dallas	"	0	0	0	0	0	0	1.3	0.0	1.3	0.0	0.0	0.0
Denpasar	"	65,693	66,326	132,019	64,465	61,500	125,965	2,140.0	2,266.4	4,406.4	2,168.1	2,116.7	4,284.8
Dili	"	0	0	0	0	0	0	0.0	0.4	0.4	0.0	0.1	0.1
Dubai	"	56,771	58,471	115,242	58,332	56,450	114,782	2,136.3	2,896.5	5,032.8	1,713.4	4,210.0	5,923.5
Dunedin	"	920	973	1,893	5,484	5,317	10,801	0.0	0.0	0.0	0.0	0.0	0.0
Frankfurt	"	17,581	15,744	33,325	15,576	16,315	31,891	2,215.1	1,093.5	3,308.5	2,274.0	1,661.5	3,935.5
Fukuoka	"	1	9	10	0	1	1	17.8	0.0	17.8	0.0	0.0	0.0
Guangzhou	"	4,401	2,784	7,185	15,562	8,552	24,114	161.7	55.6	217.3	1,059.4	151.7	1,211.1
Hamilton	"	9,821	9,479	19,300	10,598	9,847	20,445	0.0	0.0	0.0	0.0	0.0	0.0
Hanoi	"	0	0	0	1,752	1,637	3,389	0.0	0.0	0.0	38.0	106.2	144.3
Harare	"	58	61	119	0	0	0	13.3	3.3	16.7	0.0	0.0	0.0
Ho Chi Minh City	"	7,590	10,039	17,629	16,509	14,981	31,490	141.0	182.1	323.2	298.3	219.1	517.3
Hong Kong	"	113,941	131,398	245,339	131,396	137,085	268,481	11,176.2	14,711.8	25,888.1	9,754.6	13,876.9	23,631.5
Honiara	"	0	4	4	0	0	0	0.0	1.2	1.2	0.0	0.0	0.0
Honolulu	"	7,518	9,270	16,788	1,820	7,861	9,681	111.3	66.0	177.3	82.6	71.7	154.3
Jakarta	"	9,890	6,059	15,949	10,249	6,116	16,365	105.3	1,012.3	1,117.6	88.7	562.4	651.0
Johannesburg	"	269	220	489	315	330	645	335.5	195.3	530.8	195.1	120.2	315.3
Karachi	"	0	0	0	0	0	0	0.0	0.0	0.0	0.0	26.2	26.2
Kota Kinabalu	"	0	184	184	0	0	0	0.0	0.0	0.0	0.0	0.0	0.0
Kuala Lumpur	"	102,024	104,892	206,916	96,717	101,730	198,447	10,003.4	7,088.3	17,091.7	5,397.1	7,546.0	12,943.1
Lahore	"	0	0	0	0	0	0	0.0	0.0	0.0	0.0	3.3	3.3
London	"	61,198	73,410	134,608	79,251	81,778	161,029	1,850.3	474.9	2,325.3	2,394.1	629.4	3,023.5



TABLE 5: SCHEDULED INTERNATIONAL TRAFFIC BY CITY PAIRS: Year ended December

Foreign Port	Australian Port	Passengers						Freight (tonnes)					
		2000			2001			2000			2001		
		Inbound	Outbound	Total	Inbound	Outbound	Total	Inbound	Outbound	Total	Inbound	Outbound	Total
Los Angeles	Melbourne	146,525	145,351	291,876	125,997	128,185	254,182	7,520.7	7,133.4	14,654.2	4,262.9	4,554.2	8,817.1
Luxembourg	"	0	0	0	0	0	0	5,679.2	0.0	5,679.2	4,131.3	0.0	4,131.3
Manila	"	4,277	1,308	5,585	4,682	3,001	7,683	251.4	849.6	1,101.0	191.7	266.5	458.2
Mauritius	"	7,807	7,595	15,402	8,240	7,913	16,153	185.0	196.3	381.3	259.3	173.8	433.0
Nadi	"	16,972	15,808	32,780	22,467	22,004	44,471	840.4	827.4	1,667.8	318.2	497.9	816.2
Nagoya	"	452	890	1,342	61	903	964	727.2	131.4	858.6	355.2	108.3	463.4
Nauru	"	2,141	2,054	4,195	1,312	1,367	2,679	2.2	58.1	60.3	2.4	51.0	53.4
New York	"	6,839	8,558	15,397	6,271	7,486	13,757	2,696.8	140.9	2,837.7	2,487.5	149.9	2,637.4
Noumea	"	34	98	132	19	90	109	0.1	6.1	6.2	0.2	7.7	7.9
Osaka	"	10	101	111	0	1	1	0.0	0.0	0.0	0.1	0.7	0.7
Pago Pago	"	0	0	0	0	290	290	0.0	0.0	0.0	0.0	1.3	1.3
Palmerston	"	8,151	7,684	15,835	7,274	6,618	13,892	0.0	0.0	0.0	0.0	0.0	0.0
Papeete	"	1,936	1,722	3,658	0	0	0	1.9	201.6	203.5	3.8	0.0	3.8
Paris	"	4,358	4,409	8,767	3,742	3,407	7,149	341.6	6.8	348.4	138.6	24.8	163.4
Penang	"	0	0	0	0	0	0	0.0	0.0	0.0	0.0	181.3	181.3
Port Moresby	"	66	64	130	222	19	241	18.0	61.8	79.8	5.9	39.5	45.4
Port Vila	"	6,516	6,508	13,024	6,626	6,512	13,138	3.4	29.1	32.5	3.0	38.2	41.3
Queenstown	"	998	1,336	2,334	266	221	487	0.0	0.1	0.1	0.0	0.0	0.0
Rome	"	22,690	22,195	44,885	26,689	28,084	54,773	810.2	28.4	838.7	834.9	91.7	926.6
San Francisco	"	322	0	322	763	955	1,718	2.6	31.4	34.0	0.0	58.6	58.6
Seoul	"	457	212	669	0	0	0	0.0	0.0	0.0	0.0	0.0	0.0
Shanghai	"	503	4,871	5,374	13	1,242	1,255	538.9	184.3	723.2	100.0	67.4	167.4
Sharjah	"	0	0	0	0	0	0	0.0	0.0	0.0	0.0	3.0	3.0
Singapore	"	290,101	292,217	582,318	325,957	318,188	644,145	18,587.1	29,992.6	48,579.7	17,430.0	31,026.8	48,456.9
Suva	"	6	11	17	0	0	0	0.0	0.0	0.0	0.0	0.0	0.0
Taipei	"	1,096	1,113	2,209	1,079	1,090	2,169	259.6	311.7	571.3	108.1	99.5	207.6
Tokyo	"	27,749	19,136	46,885	27,886	19,350	47,236	1,293.9	2,260.1	3,554.0	929.1	1,096.2	2,025.3
Toledo	"	0	0	0	0	0	0	948.9	0.0	948.9	346.5	0.0	346.5
Tongatapu	"	339	403	742	172	606	778	2.3	2.0	4.4	6.7	2.3	9.0
Toronto	"	665	1,592	2,257	964	650	1,614	68.4	31.2	99.6	24.5	66.3	90.8
Vancouver	"	1,313	3,888	5,201	218	2,015	2,233	36.1	69.4	105.5	3.2	74.6	77.8
Vienna	"	17,162	21,238	38,400	20,503	21,984	42,487	592.1	405.4	997.5	119.7	0.0	119.7
Wellington	"	45,638	45,232	90,870	52,897	54,978	107,875	342.9	624.8	967.8	190.0	188.0	378.0
Zurich	"	96	113	209	0	0	0	0.0	0.0	0.0	0.0	0.0	0.0
<b>Total</b>	<b>Melbourne</b>	<b>1,518,891</b>	<b>1,524,738</b>	<b>3,043,629</b>	<b>1,666,962</b>	<b>1,644,899</b>	<b>3,311,861</b>	<b>98,231.0</b>	<b>101,252.2</b>	<b>199,483.2</b>	<b>82,906.1</b>	<b>97,604.0</b>	<b>180,510.0</b>
Auckland	Newcastle	0	0	0	493	561	1,054	0.0	0.0	0.0	0.0	0.0	0.0
<b>Total</b>	<b>Newcastle</b>	<b>0</b>	<b>0</b>	<b>0</b>	<b>493</b>	<b>561</b>	<b>1,054</b>	<b>0.0</b>	<b>0.0</b>	<b>0.0</b>	<b>0.0</b>	<b>0.0</b>	<b>0.0</b>
Auckland	Norfolk Island	7,040	7,033	14,073	8,306	8,061	16,367	135.8	14.6	150.4	113.2	17.2	130.5
<b>Total</b>	<b>Norfolk Island</b>	<b>7,040</b>	<b>7,033</b>	<b>14,073</b>	<b>8,306</b>	<b>8,061</b>	<b>16,367</b>	<b>135.8</b>	<b>14.6</b>	<b>150.4</b>	<b>113.2</b>	<b>17.2</b>	<b>130.5</b>
Athens	Perth	106	0	106	0	0	0	0.0	0.0	0.0	0.0	0.0	0.0
Atlanta	"	0	0	0	0	0	0	39.3	0.0	39.3	0.0	0.0	0.0
Auckland	"	27,608	29,141	56,749	30,222	30,552	60,774	1,501.0	990.6	2,491.6	1,596.8	783.6	2,380.4
Bandar Seri Begawan	"	13,729	14,244	27,973	21,420	21,739	43,159	131.6	641.8	773.4	183.0	875.7	1,058.7
Bangkok	"	26,440	24,658	51,098	34,349	32,514	66,863	828.4	1,213.7	2,042.0	775.5	1,983.0	2,758.5

TABLE 5: SCHEDULED INTERNATIONAL TRAFFIC BY CITY PAIRS: Year ended December

Foreign Port	Australian Port	Passengers						Freight (tonnes)					
		2000			2001			2000			2001		
		Inbound	Outbound	Total	Inbound	Outbound	Total	Inbound	Outbound	Total	Inbound	Outbound	Total
Bombay	Perth	775	1,355	2,130	1,641	1,366	3,007	32.0	2.3	34.3	13.5	1.6	15.0
Buenos Aires	"	30	0	30	6	0	6	5.6	11.7	17.4	6.1	5.1	11.2
Chicago	"	0	0	0	0	0	0	68.9	0.0	68.9	4.2	0.0	4.2
Christchurch	"	953	962	1,915	79	43	122	105.3	28.6	133.9	65.3	11.2	76.5
Denpasar	"	94,530	93,540	188,070	97,472	96,985	194,457	285.5	307.8	593.2	276.0	458.3	734.3
Dili	"	0	0	0	0	0	0	0.0	0.0	0.0	0.0	0.0	0.0
Frankfurt	"	5,849	2,673	8,522	4,771	4,794	9,565	62.4	5.9	68.3	35.5	28.9	64.4
Harare	"	4,368	3,195	7,563	0	0	0	59.5	26.4	85.8	0.0	0.0	0.0
Hong Kong	"	40,512	38,276	78,788	38,398	36,871	75,269	887.6	3,661.7	4,549.3	1,064.2	4,240.0	5,304.1
Honiara	"	0	0	0	0	0	0	0.0	0.0	0.0	0.0	0.0	0.0
Honolulu	"	678	18	696	14	0	14	3.4	70.1	73.5	0.0	66.3	66.3
Jakarta	"	19,326	18,171	37,497	19,094	17,598	36,692	39.5	303.2	342.7	108.7	367.3	476.0
Johannesburg	"	42,953	37,358	80,311	46,692	39,752	86,444	680.6	804.8	1,485.4	765.1	1,723.0	2,488.1
Kuala Lumpur	"	122,856	113,698	236,554	108,841	101,522	210,363	1,980.7	3,616.9	5,597.6	1,997.2	4,085.6	6,082.7
Kuching	"	3,977	4,463	8,440	4,089	4,477	8,566	0.1	112.6	112.7	0.1	487.5	487.6
London	"	35,495	41,317	76,812	20,448	20,834	41,282	709.0	376.0	1,085.0	114.2	19.8	134.0
Los Angeles	"	2,004	693	2,697	37	92	129	43.8	223.0	266.8	20.5	171.2	191.7
Manila	"	74	0	74	1	0	1	6.0	56.2	62.2	1.6	5.2	6.8
Mauritius	"	5,830	6,103	11,933	6,092	6,052	12,144	79.4	542.8	622.2	81.4	418.0	499.4
Nadi	"	0	2	2	0	0	0	13.0	0.0	13.0	0.0	0.0	0.0
Nagoya	"	3	0	3	0	0	0	0.8	10.0	10.8	0.4	31.7	32.1
New York	"	43	4	47	0	0	0	59.6	121.9	181.5	19.6	144.9	164.5
Noumea	"	0	1	1	0	0	0	0.3	0.0	0.3	0.4	0.1	0.5
Palmerston	"	0	6	6	0	0	0	0.0	0.0	0.0	0.0	0.0	0.0
Papeete	"	21	2	23	0	0	0	0.0	0.7	0.7	0.0	0.0	0.0
Paris	"	3,141	1,615	4,756	2,639	2,617	5,256	22.1	2.9	25.0	7.2	24.7	31.9
Phuket	"	13,487	13,643	27,130	13,582	13,922	27,504	0.0	25.4	25.5	0.1	0.6	0.7
Port Moresby	"	4	0	4	0	0	0	7.8	11.8	19.6	3.6	2.6	6.1
Queenstown	"	0	0	0	0	2	2	0.0	0.0	0.0	0.0	0.0	0.0
Rome	"	0	0	0	1	0	1	7.2	0.2	7.4	5.7	0.0	5.8
Seoul	"	2	0	2	0	0	0	0.0	0.0	0.0	0.0	0.0	0.0
Shanghai	"	0	2	2	0	0	0	10.9	0.4	11.3	5.5	0.1	5.6
Singapore	"	320,933	301,893	622,826	340,120	319,874	659,994	6,263.9	21,557.9	27,821.9	6,560.4	23,512.5	30,072.9
Taipei	"	4	0	4	0	0	0	2.3	0.1	2.3	0.0	0.3	0.3
Tokyo	"	24,604	22,224	46,828	23,829	21,614	45,443	216.4	1,255.6	1,472.0	346.7	1,175.8	1,522.5
Toledo	"	0	0	0	0	0	0	15.4	0.0	15.4	0.0	0.0	0.0
Toronto	"	83	2	85	0	0	0	4.3	35.8	40.1	0.0	0.0	0.0
Vancouver	"	233	0	233	16	0	16	0.2	14.2	14.4	0.0	9.9	9.9
Wellington	"	262	358	620	4	11	15	28.6	10.1	38.7	3.6	4.6	8.3
Zurich	"	85	7	92	0	0	0	0.0	0.0	0.0	0.0	0.0	0.0
<b>Total</b>	<b>Perth</b>	<b>810,998</b>	<b>769,624</b>	<b>1,580,622</b>	<b>813,857</b>	<b>773,231</b>	<b>1,587,088</b>	<b>14,202.6</b>	<b>36,043.1</b>	<b>50,245.6</b>	<b>14,061.9</b>	<b>40,639.0</b>	<b>54,700.9</b>
Abu Dhabi	Sydney	3,872	2,744	6,616	0	0	0	202.9	114.8	317.7	0.0	24.0	24.0
Amsterdam	"	44,144	46,141	90,285	9,905	11,433	21,338	9,947.9	2,702.6	12,650.5	8,982.7	1,807.1	10,789.8
Apia	"	2,163	2,175	4,338	5,275	3,135	8,410	53.6	26.8	80.4	114.9	23.3	138.1

TABLE 5: SCHEDULED INTERNATIONAL TRAFFIC BY CITY PAIRS: Year ended December

Foreign Port	Australian Port	Passengers						Freight (tonnes)					
		2000			2001			2000			2001		
		Inbound	Outbound	Total	Inbound	Outbound	Total	Inbound	Outbound	Total	Inbound	Outbound	Total
Athens	Sydney	16,821	19,175	35,996	18,633	17,759	36,392	188.4	95.8	284.2	163.9	77.6	241.5
Atlanta	"	0	0	0	0	0	0	1,826.3	3.4	1,829.6	1,052.9	2.0	1,054.8
Auckland	"	460,057	476,999	937,056	499,868	511,562	1,011,430	21,861.4	28,228.1	50,089.5	21,601.2	27,541.2	49,142.4
Bahrain	"	26,614	15,336	41,950	22,227	18,913	41,140	1,286.4	647.4	1,933.7	720.4	709.7	1,430.1
Bangkok	"	219,490	199,880	419,370	229,585	210,683	440,268	5,337.9	3,421.0	8,759.0	5,314.9	3,396.3	8,711.2
Beijing	"	30,356	28,956	59,312	28,085	29,484	57,569	487.2	343.5	830.7	174.2	481.9	656.1
Bombay	"	10,660	12,479	23,139	9,908	12,561	22,469	210.1	62.0	272.2	98.4	53.1	151.5
Buenos Aires	"	27,709	29,617	57,326	22,853	26,130	48,983	197.7	811.6	1,009.3	86.3	629.4	715.7
Cairo	"	14,392	14,734	29,126	14,919	14,777	29,696	402.5	298.9	701.4	325.6	304.7	630.4
Cebu	"	0	0	0	158	163	321	0.0	0.0	0.0	3.5	3.4	6.9
Chicago	"	8,197	9,311	17,508	8,344	9,312	17,656	4,627.7	0.1	4,627.8	3,875.4	0.0	3,875.4
Christchurch	"	186,147	194,037	380,184	199,492	205,484	404,976	4,536.4	3,083.5	7,619.9	4,591.3	3,546.5	8,137.8
Colombo	"	28,616	28,637	57,253	17,118	14,006	31,124	1,594.8	902.3	2,497.1	655.4	585.4	1,240.8
Dallas	"	0	0	0	0	0	0	0.2	0.0	0.2	0.0	0.0	0.0
Denpasar	"	100,706	100,765	201,471	102,747	107,550	210,297	2,161.0	1,262.9	3,423.9	2,192.4	1,602.9	3,795.2
Dili	"	0	0	0	0	0	0	0.1	2.3	2.4	0.0	3.7	3.7
Dubai	"	27,279	25,714	52,993	39,318	42,675	81,993	1,296.8	830.1	2,126.9	1,693.9	1,725.3	3,419.2
Dunedin	"	9,167	8,682	17,849	7,697	7,559	15,256	0.0	0.0	0.0	0.0	0.0	0.0
Frankfurt	"	24,798	27,892	52,690	25,510	29,363	54,873	1,988.1	130.5	2,118.6	1,729.6	161.7	1,891.3
Fukuoka	"	2,197	3,850	6,047	605	1,122	1,727	16.3	0.2	16.5	0.0	0.0	0.0
Guangzhou	"	10,349	12,445	22,794	24,667	30,489	55,156	392.3	61.3	453.6	810.2	132.3	942.5
Hamilton	"	13,249	12,836	26,085	10,945	10,803	21,748	0.0	0.0	0.0	0.0	0.0	0.0
Hanoi	"	869	957	1,826	2,966	2,928	5,894	0.0	10.1	10.1	3.8	68.1	71.8
Harare	"	2,615	2,609	5,224	0	0	0	119.2	29.1	148.3	0.0	0.0	0.0
Ho Chi Minh City	"	7,904	14,934	22,838	17,518	16,464	33,982	315.2	170.8	486.0	490.8	255.0	745.8
Hong Kong	"	338,655	330,046	668,701	309,863	297,427	607,290	16,370.5	17,605.1	33,975.6	14,073.5	16,584.3	30,657.8
Honiara	"	487	586	1,073	0	0	0	0.0	3.8	3.8	0.0	0.0	0.0
Honolulu	"	64,564	54,173	118,737	65,831	59,585	125,416	1,364.4	1,271.5	2,635.8	1,264.4	1,543.4	2,807.8
Jakarta	"	33,905	40,007	73,912	38,853	42,719	81,572	278.6	989.6	1,268.2	340.0	595.1	935.1
Johannesburg	"	48,722	48,878	97,600	61,528	54,852	116,380	1,991.0	1,631.3	3,622.3	1,009.5	369.0	1,378.5
Kota Kinabalu	"	0	292	292	0	0	0	0.0	0.0	0.0	0.0	0.0	0.0
Kuala Lumpur	"	144,169	137,869	282,038	142,393	131,366	273,759	4,240.5	3,843.0	8,083.6	5,143.5	2,738.5	7,882.0
London	"	171,812	169,426	341,238	181,765	189,252	371,017	7,131.2	1,913.2	9,044.3	6,614.1	1,944.9	8,559.0
Los Angeles	"	397,563	413,586	811,149	363,582	356,388	719,970	24,624.3	8,096.2	32,720.6	19,872.8	7,799.1	27,671.9
Louisville	"	0	0	0	0	0	0	2,997.0	0.0	2,997.0	4,300.2	0.0	4,300.2
Manila	"	58,794	63,893	122,687	55,395	53,570	108,965	1,072.9	1,461.1	2,534.0	1,118.9	1,663.9	2,782.8
Milan	"	15,324	20,821	36,145	0	0	0	908.6	195.7	1,104.3	0.0	0.0	0.0
Nadi	"	75,185	74,858	150,043	86,721	88,550	175,271	3,435.1	2,743.6	6,178.7	3,242.3	2,899.8	6,142.1
Nagoya	"	26,493	39,953	66,446	24,520	41,857	66,377	817.8	613.1	1,431.0	931.2	1,009.9	1,941.0
Nauru	"	521	531	1,052	370	367	737	0.1	1.4	1.5	0.4	2.5	2.8
New York	"	21,781	23,197	44,978	24,979	25,940	50,919	5,828.9	135.5	5,964.5	4,617.5	278.3	4,895.9
Noumea	"	34,668	33,472	68,140	41,209	39,618	80,827	75.7	428.7	504.5	20.2	453.5	473.7
Osaka	"	72,224	204,150	276,374	61,533	177,811	239,344	1,229.7	5,387.1	6,616.8	1,164.5	4,878.5	6,043.0
Pago Pago	"	0	0	0	0	0	0	0.0	0.0	0.0	0.3	0.0	0.3

TABLE 5: SCHEDULED INTERNATIONAL TRAFFIC BY CITY PAIRS: Year ended December

Foreign Port	Australian Port	Passengers						Freight (tonnes)					
		2000			2001			2000			2001		
		Inbound	Outbound	Total	Inbound	Outbound	Total	Inbound	Outbound	Total	Inbound	Outbound	Total
Palmerston	Sydney	9,685	9,172	18,857	9,505	8,717	18,222	0.0	0.0	0.0	0.0	0.0	0.0
Papeete	"	6,542	7,243	13,785	768	2,283	3,051	4.2	145.8	150.0	0.0	10.1	10.1
Paris	"	18,458	20,506	38,964	17,398	19,839	37,237	831.5	243.7	1,075.2	724.2	57.7	781.9
Port Moresby	"	9,514	9,576	19,090	12,785	11,884	24,669	101.2	539.5	640.7	270.8	524.4	795.2
Port Vila	"	18,209	18,017	36,226	15,871	15,802	31,673	136.5	194.5	331.0	126.6	182.1	308.7
Queenstown	"	4,809	5,493	10,302	6,591	7,080	13,671	0.0	0.0	0.0	0.0	0.0	0.0
Rome	"	7,219	14,897	22,116	17,462	16,297	33,759	757.6	40.3	797.9	765.6	25.8	791.3
San Francisco	"	87,564	90,840	178,404	85,402	86,861	172,263	423.8	3,117.4	3,541.2	458.5	3,144.7	3,603.3
Seattle	"	0	0	0	0	0	0	819.3	0.0	819.3	0.0	0.0	0.0
Seoul	"	139,433	138,557	277,990	148,521	145,603	294,124	10,063.9	8,727.9	18,791.8	8,018.7	8,954.3	16,973.0
Shanghai	"	61,273	48,575	109,848	50,375	44,883	95,258	2,374.0	561.3	2,935.3	1,643.6	635.8	2,279.5
Singapore	"	439,504	430,298	869,802	476,505	465,783	942,288	25,364.6	20,948.0	46,312.6	24,410.6	23,753.3	48,163.9
Subic Bay	"	0	0	0	0	0	0	0.0	8,148.1	8,148.1	0.0	10,163.2	10,163.2
Suva	"	3,260	3,400	6,660	3,417	3,771	7,188	6.6	13.0	19.6	12.2	8.5	20.8
Taipei	"	58,373	56,221	114,594	54,485	51,583	106,068	4,595.3	3,557.5	8,152.8	1,712.0	1,787.6	3,499.6
Tokyo	"	199,720	210,617	410,337	183,257	204,300	387,557	4,136.4	7,203.5	11,339.8	3,280.1	7,710.3	10,990.4
Toledo	"	0	0	0	0	0	0	461.8	0.0	461.8	192.6	0.0	192.6
Tongatapu	"	3,621	3,237	6,858	2,674	1,455	4,129	18.7	10.0	28.7	26.3	16.1	42.5
Toronto	"	13,882	11,293	25,175	0	0	0	205.2	146.3	351.5	0.0	0.0	0.0
Vancouver	"	24,828	31,136	55,964	37,227	37,668	74,895	368.9	716.9	1,085.7	626.6	1,482.6	2,109.2
Vienna	"	31,738	33,528	65,266	36,624	43,944	80,568	870.8	402.8	1,273.6	182.0	0.0	182.0
Washington	"	180	11	191	0	0	0	0.0	0.0	0.0	0.0	0.0	0.0
Wellington	"	112,248	114,276	226,524	111,570	114,826	226,396	1,007.9	510.3	1,518.2	385.9	113.7	499.6
Zurich	"	165	224	389	0	0	0	0.0	0.0	0.0	0.0	0.0	0.0
<b>Total</b>	<b>Sydney</b>	<b>4,033,463</b>	<b>4,203,760</b>	<b>8,237,223</b>	<b>4,047,322</b>	<b>4,176,236</b>	<b>8,223,558</b>	<b>183,964.7</b>	<b>144,786.0</b>	<b>328,750.7</b>	<b>161,231.3</b>	<b>144,465.4</b>	<b>305,696.7</b>
Auckland	Townsville	0	0	0	4	0	4	0.0	0.0	0.0	0.0	0.0	0.0
Bombay	"	0	0	0	2	0	2	0.0	0.0	0.0	0.0	0.0	0.0
Frankfurt	"	0	0	0	0	1	1	0.0	0.0	0.0	0.0	0.0	0.0
London	"	0	0	0	0	1	1	0.0	0.0	0.0	0.0	0.0	0.0
Los Angeles	"	0	0	0	0	0	0	0.0	0.0	0.0	0.0	0.2	0.2
Manila	"	0	0	0	0	0	0	0.0	0.0	0.0	0.0	0.0	0.0
Singapore	"	0	0	0	62	76	138	0.0	0.0	0.0	0.0	0.2	0.2
Wellington	"	0	0	0	0	1	1	0.0	0.0	0.0	0.0	0.0	0.0
<b>Total</b>	<b>Townsville</b>	<b>0</b>	<b>0</b>	<b>0</b>	<b>68</b>	<b>79</b>	<b>147</b>	<b>0.0</b>	<b>0.0</b>	<b>0.0</b>	<b>0.0</b>	<b>0.5</b>	<b>0.5</b>
Abu Dhabi	Australia	10,083	5,368	15,451	4,737	2,137	6,874	465.5	506.7	972.2	71.1	250.0	321.1
Amsterdam	"	44,144	46,141	90,285	9,905	11,433	21,338	9,947.9	2,702.6	12,650.5	8,982.7	1,809.1	10,791.8
Apia	"	2,795	2,798	5,593	5,549	3,417	8,966	89.5	40.0	129.5	117.8	29.5	147.3
Athens	"	27,055	29,057	56,112	29,398	29,410	58,808	373.4	169.2	542.7	305.7	167.9	473.6
Atlanta	"	0	0	0	0	0	0	3,758.4	3.4	3,761.7	2,390.2	2.0	2,392.2
Auckland	"	951,161	982,934	1,934,095	1,054,180	1,077,446	2,131,626	42,470.6	55,253.8	97,724.5	43,176.6	53,955.0	97,131.6
Bahrain	"	43,849	23,028	66,877	35,709	31,248	66,957	1,815.1	2,723.4	4,538.5	1,279.8	2,497.9	3,777.7
Bandar Seri Begawan	"	35,599	38,068	73,667	52,416	54,475	106,891	486.7	1,861.1	2,347.8	590.7	2,426.7	3,017.4
Bangkok	"	370,960	347,405	718,365	413,245	393,568	806,813	10,808.5	11,003.8	21,812.3	10,411.1	12,550.6	22,961.8
Beijing	"	34,621	31,395	66,016	35,671	32,498	68,169	558.2	466.5	1,024.7	240.4	663.7	904.1

TABLE 5: SCHEDULED INTERNATIONAL TRAFFIC BY CITY PAIRS: Year ended December

Foreign Port	Australian Port	Passengers						Freight (tonnes)					
		2000			2001			2000			2001		
		Inbound	Outbound	Total	Inbound	Outbound	Total	Inbound	Outbound	Total	Inbound	Outbound	Total
Bombay	Australia	16,341	14,744	31,085	19,485	15,649	35,134	452.8	252.0	704.8	272.7	128.6	401.2
Buenos Aires	"	33,996	34,972	68,968	29,947	31,080	61,027	276.9	849.5	1,126.4	115.0	654.7	769.7
Cairo	"	14,392	14,734	29,126	14,919	14,777	29,696	402.5	298.9	701.4	325.6	304.7	630.4
Cebu	"	0	0	0	158	163	321	0.0	0.0	0.0	3.5	3.4	6.9
Chicago	"	8,197	9,311	17,508	10,268	11,149	21,417	8,325.3	0.1	8,325.4	7,034.7	0.0	7,034.7
Christchurch	"	351,926	351,673	703,599	386,248	385,870	772,118	9,688.6	7,344.7	17,033.4	8,851.2	7,468.9	16,320.1
Colombo	"	28,616	28,637	57,253	17,118	14,006	31,124	1,594.8	902.3	2,497.1	655.4	585.4	1,240.8
Dallas	"	0	0	0	0	0	0	1.5	0.0	1.5	0.0	0.0	0.0
Denpasar	"	336,444	339,071	675,515	331,589	335,688	667,277	5,258.1	4,456.3	9,714.4	5,295.8	4,776.7	10,072.5
Dili	"	4,696	4,826	9,522	789	917	1,706	3.6	27.5	31.1	0.8	5.8	6.6
Dubai	"	84,050	84,185	168,235	97,650	99,125	196,775	3,433.1	3,726.6	7,159.7	3,407.3	5,935.4	9,342.7
Dunedin	"	23,169	22,796	45,965	27,677	27,549	55,226	0.0	0.0	0.0	0.0	0.0	0.0
Frankfurt	"	62,900	63,507	126,407	62,376	70,007	132,383	4,489.7	1,375.6	5,865.3	4,156.9	1,865.7	6,022.6
Fukuoka	"	2,411	3,859	6,270	797	1,136	1,933	34.1	0.2	34.3	0.0	0.0	0.0
Guam	"	10,491	10,576	21,067	10,562	10,846	21,408	2.3	19.8	22.1	1.0	39.2	40.2
Guangzhou	"	14,750	15,229	29,979	40,229	39,041	79,270	554.1	116.9	670.9	1,869.6	284.0	2,153.6
Hamilton	"	54,398	52,941	107,339	54,103	53,095	107,198	0.0	0.0	0.0	0.0	0.0	0.0
Hanoi	"	869	957	1,826	4,718	4,565	9,283	0.0	10.1	10.1	41.8	174.3	216.1
Harare	"	7,341	5,950	13,291	0	0	0	212.4	61.5	273.9	0.0	0.0	0.0
Ho Chi Minh City	"	15,494	24,985	40,479	34,027	31,445	65,472	456.2	352.9	809.1	789.0	474.1	1,263.2
Hong Kong	"	603,906	589,554	1,193,460	586,839	560,421	1,147,260	30,739.8	43,028.2	73,768.0	27,371.5	42,843.0	70,214.5
Honiara	"	7,755	7,780	15,535	3,656	3,589	7,245	151.0	144.5	295.5	55.5	58.4	113.9
Honolulu	"	75,285	65,161	140,446	68,492	68,907	137,399	1,503.7	1,512.6	3,016.3	1,353.8	1,741.4	3,095.2
Jakarta	"	66,026	64,981	131,007	70,671	67,629	138,300	452.5	2,806.5	3,259.0	553.8	1,745.2	2,299.0
Johannesburg	"	92,749	86,669	179,418	108,535	95,428	203,963	3,186.6	2,656.9	5,843.5	2,071.0	2,240.5	4,311.6
Karachi	"	0	0	0	0	0	0	0.0	0.0	0.0	0.0	26.2	26.2
Kota Kinabalu	"	0	476	476	0	0	0	0.0	0.0	0.0	0.0	0.0	0.0
Kuala Lumpur	"	504,793	490,931	995,724	472,151	455,814	927,965	19,465.7	17,900.4	37,366.1	15,817.2	18,643.1	34,460.3
Kuching	"	3,977	4,463	8,440	4,089	4,477	8,566	0.1	112.6	112.7	0.1	487.5	487.6
Kupang	"	1,414	1,867	3,281	541	412	953	7.0	5.1	12.0	0.6	1.1	1.7
Lae	"	1,809	0	1,809	0	0	0	4.1	0.0	4.1	0.0	0.0	0.0
Lahore	"	0	0	0	0	0	0	0.0	0.0	0.0	0.0	3.3	3.3
London	"	325,742	341,865	667,607	312,625	322,927	635,552	10,233.1	3,075.1	13,308.2	9,355.9	2,726.8	12,082.6
Los Angeles	"	579,278	586,654	1,165,932	525,359	517,079	1,042,438	33,007.2	16,525.6	49,532.8	24,991.6	13,497.3	38,488.9
Louisville	"	0	0	0	0	0	0	2,997.0	0.0	2,997.0	4,300.2	0.0	4,300.2
Luxembourg	"	0	0	0	0	0	0	5,679.2	0.0	5,679.2	4,131.3	0.0	4,131.3
Manila	"	70,590	72,944	143,534	65,544	62,124	127,668	1,369.0	2,655.0	4,024.0	1,338.1	2,089.1	3,427.2
Mauritius	"	13,637	13,698	27,335	14,332	13,965	28,297	264.4	739.0	1,003.5	340.7	591.8	932.5
Milan	"	15,324	20,821	36,145	0	0	0	908.6	195.7	1,104.3	0.0	0.0	0.0
Mount Hagen	"	0	2,026	2,026	0	0	0	0.0	16.4	16.4	0.0	0.0	0.0
Nadi	"	108,953	106,667	215,620	128,768	130,530	259,298	4,493.6	3,824.9	8,318.5	3,726.1	3,651.7	7,377.8
Nagoya	"	91,644	86,784	178,428	97,401	93,772	191,173	1,624.6	1,453.5	3,078.1	1,384.7	1,811.7	3,196.5
Nauru	"	7,619	7,062	14,681	5,174	5,007	10,181	8.6	220.1	228.7	13.2	202.8	216.0
New York	"	28,957	32,104	61,061	31,510	33,723	65,233	8,924.1	538.8	9,462.9	7,258.7	669.2	7,927.9

TABLE 5: SCHEDULED INTERNATIONAL TRAFFIC BY CITY PAIRS: Year ended December

Foreign Port	Australian Port	Passengers						Freight (tonnes)					
		2000			2001			2000			2001		
		Inbound	Outbound	Total	Inbound	Outbound	Total	Inbound	Outbound	Total	Inbound	Outbound	Total
Noumea	Australia	47,972	47,337	95,309	56,404	55,923	112,327	96.4	574.9	671.3	35.5	610.5	646.0
Osaka	"	239,037	229,984	469,021	222,570	210,812	433,382	4,306.7	7,737.6	12,044.3	3,226.6	7,801.7	11,028.2
Pago Pago	"	0	0	0	0	290	290	0.0	0.0	0.0	0.3	1.3	1.6
Palmerston	"	37,706	35,894	73,600	37,111	35,836	72,947	0.0	0.0	0.0	0.0	0.0	0.0
Papeete	"	9,525	9,410	18,935	768	2,283	3,051	8.1	358.0	366.1	3.8	10.1	13.9
Paris	"	29,267	31,960	61,227	28,411	32,759	61,170	1,253.3	562.2	1,815.5	897.8	174.7	1,072.5
Penang	"	0	0	0	0	0	0	0.0	0.0	0.0	0.0	181.3	181.3
Phuket	"	13,487	13,643	27,130	13,582	13,922	27,504	0.0	25.4	25.5	0.1	0.6	0.7
Port Moresby	"	76,174	76,180	152,354	75,558	76,229	151,787	1,123.3	2,753.0	3,876.3	1,638.0	2,919.9	4,557.9
Port Vila	"	36,368	36,372	72,740	33,534	33,182	66,716	171.4	370.0	541.4	163.1	377.2	540.3
Queenstown	"	6,930	8,305	15,235	8,967	9,472	18,439	0.0	0.1	0.1	0.0	0.0	0.0
Rome	"	30,099	37,233	67,332	44,336	44,427	88,763	1,655.9	71.4	1,727.3	1,640.8	119.6	1,760.4
San Francisco	"	87,886	90,840	178,726	86,165	87,816	173,981	439.1	3,148.8	3,587.9	458.6	3,203.3	3,661.9
Seattle	"	0	0	0	0	0	0	819.3	0.0	819.3	0.0	0.0	0.0
Seoul	"	161,093	157,225	318,318	173,070	166,370	339,440	10,914.1	10,526.2	21,440.3	8,536.3	10,283.4	18,819.8
Shanghai	"	62,213	54,060	116,273	50,610	46,247	96,857	2,993.6	773.6	3,767.3	1,761.3	726.3	2,487.6
Sharjah	"	0	0	0	0	0	0	0.0	0.0	0.0	0.0	3.0	3.0
Singapore	"	1,355,598	1,316,677	2,672,275	1,456,402	1,409,394	2,865,796	57,580.5	92,855.2	150,435.7	54,492.0	99,090.4	153,582.3
Subic Bay	"	0	0	0	0	0	0	0.0	8,148.1	8,148.1	0.0	10,163.2	10,163.2
Suva	"	3,277	3,411	6,688	3,417	3,771	7,188	6.6	13.0	19.6	12.2	8.5	20.8
Taipei	"	111,374	109,318	220,692	93,385	88,725	182,110	6,529.2	6,518.1	13,047.3	3,064.3	3,723.7	6,788.0
Tokyo	"	470,571	483,640	954,211	466,827	479,924	946,751	8,051.1	18,333.5	26,384.6	7,152.1	18,872.0	26,024.1
Toledo	"	0	0	0	0	0	0	1,484.1	0.0	1,484.1	564.3	0.0	564.3
Tongatapu	"	3,960	3,640	7,600	2,846	2,061	4,907	21.1	12.0	33.1	33.0	18.4	51.5
Toronto	"	14,910	13,188	28,098	964	650	1,614	300.2	260.6	560.8	24.5	66.3	90.8
Vancouver	"	27,110	35,648	62,758	37,724	40,176	77,900	406.3	869.4	1,275.7	633.8	1,577.8	2,211.6
Vienna	"	48,900	54,766	103,666	57,127	65,928	123,055	1,462.9	808.3	2,271.1	301.7	0.0	301.7
Washington	"	180	11	191	0	0	0	0.0	0.0	0.0	0.0	0.0	0.0
Wellington	"	200,338	201,931	402,269	212,732	217,114	429,846	1,492.6	1,258.9	2,751.6	632.7	361.7	994.5
Zurich	"	559	607	1,166	0	0	0	0.0	0.0	0.0	0.0	0.0	0.0
<b>Total</b>	<b>Australia</b>	<b>8,264,740</b>	<b>8,222,934</b>	<b>16,487,674</b>	<b>8,441,667</b>	<b>8,340,855</b>	<b>16,782,522</b>	<b>332,095.4</b>	<b>347,914.7</b>	<b>680,010.1</b>	<b>289,723.1</b>	<b>350,378.6</b>	<b>640,101.7</b>

Note: In interpreting the figures in this table, reference should be made to Explanatory Notes - paragraph 8 in particular.  
Also refer to Revenue passenger definition.

**TABLE 6 : INTERNATIONAL AIRLINES  
OWN STOPOVER REVENUE PASSENGERS,  
AUSTRALIAN CITY PAIRS**

**YEAR ENDED DECEMBER 2001**

<b>City Pair Route</b>	<b>Total Passengers</b>
Brisbane/Sydney	30,439
Melbourne/Sydney	14,803
Brisbane/Cairns	2,736
Cairns/Darwin	2,239
Adelaide/Melbourne	660
Perth/Sydney	69
<b>TOTAL</b>	<b>50,946</b>

Notes:

1. Own Stopover Revenue Passengers : The aggregate of revenue passengers uplifted at one Australian airport and discharged (excluding transit passengers) at another Australian airport by the same foreign registered international airline on which they entered or left Australia.
2. City Pair Route represents the aggregation of passengers travelling in both directions.
3. This data are supplementary to the information previously supplied to the Department by most international airlines. Tables 1-5 cover only those passengers travelling to/from overseas airports. The inclusion of this additional data provides a more complete coverage of international airline activity.

**TABLE 7: TOTAL AIRCRAFT MOVEMENTS AT AUSTRALIAN INTERNATIONAL AIRPORTS BY AIRCRAFT TYPES: Year ended December 2001**

Airport	Aircraft Types																			
	Passenger/Mixed															Freighters				All Types
	310	320	330	340	737	747	74M	757	767	777	M11	D10	F28	146	DH8	72F	74F	76F	M1F	
Adelaide			394	238	4	579			473	126		2								1,816
Brisbane	466	2	1,100		4,087	3,583	379		5,155	2,129	446									17,347
Broome														58						58
Cairns	201		615		362	1,919	424		1,205	2			1,174				2			5,904
Coolangatta	10				437															447
Darwin			418		529	100	444	32	1,220	2					119		4			2,868
Melbourne			722	995	4,882	7,762	26		4,940	2,700	410	2					762		220	23,421
Newcastle					10															10
Norfolk Island					210															210
Perth		144	1,241	691	599	543	3	2	2,983	2,749		104					82			9,141
Sydney	312	83	1,151	2,182	6,022	20,339	596		11,206	3,704	639					439	929	48	704	48,354
Townsville									34											34
<b>Australia</b>	<b>989</b>	<b>229</b>	<b>5,641</b>	<b>4,106</b>	<b>17,142</b>	<b>34,825</b>	<b>1,872</b>	<b>34</b>	<b>27,216</b>	<b>11,412</b>	<b>1,495</b>	<b>108</b>	<b>1,174</b>	<b>58</b>	<b>119</b>	<b>439</b>	<b>1,779</b>	<b>48</b>	<b>924</b>	<b>109,610</b>

% of All Types	0.9	0.2	5.1	3.7	15.6	31.8	1.7	0.0	24.8	10.4	1.4	0.1	1.1	0.1	0.1	0.4	1.6	0.0	0.8	100.0
----------------	-----	-----	-----	-----	------	------	-----	-----	------	------	-----	-----	-----	-----	-----	-----	-----	-----	-----	-------

**NOTE:**

These figures only cover scheduled operations of the airlines listed in this publication. Charter/ferry operations are not included. These figures are available electronically for January 2001 onwards. Prior to this, aircraft type data is not readily accessible.

**Aircraft Types (all series)**

Airbus	310	320	330	340																
Boeing	737	747	74M	757	767	777	72F	74F	76F											
McDonnell Douglas	M11	D10	M1F																	
Fokker	F28																			
BAE	146																			
de Havilland	DH8																			