



Australian Government

Department of Infrastructure, Regional Development and Cities

Bureau of Infrastructure, Transport and Regional Economics

STATISTICAL REPORT



Aviation

Domestic aviation activity

October 2018

© Commonwealth of Australia 2018

ISSN: 1832 - 1968

Ownership of intellectual property rights in this publication

Unless otherwise noted, copyright (and any other intellectual property rights, if any) in this publication is owned by the Commonwealth of Australia (referred to below as the Commonwealth).

Disclaimer

The material contained in this publication is made available on the understanding that the Commonwealth is not providing professional advice, and that users exercise their own skill and care with respect to its use, and seek independent advice if necessary.

The Commonwealth makes no representations or warranties as to the contents or accuracy of the information contained in this publication. To the extent permitted by law, the Commonwealth disclaims liability to any person or organisation in respect of anything done, or omitted to be done, in reliance upon information contained in this publication.

Creative Commons licence

With the exception of (a) the Coat of Arms; and (b) the Department of Infrastructure, Regional Development and Cities' photos and graphics, copyright in this publication is licensed under a Creative Commons Attribution 3.0 Australia Licence.

Creative Commons Attribution 3.0 Australia Licence is a standard form licence agreement that allows you to copy, communicate and adapt this publication provided that you attribute the work to the Commonwealth and abide by the other licence terms. A summary of the licence terms is available from <http://creativecommons.org/licenses/by/3.0/au/deed.en>. The full licence terms are available from <http://creativecommons.org/licenses/by/3.0/au/legalcode>.

Use of the Coat of Arms

The Department of the Prime Minister and Cabinet sets the terms under which the Coat of Arms is used. Please refer to the Department's Commonwealth Coat of Arms and Government branding web page <http://www.dpmc.gov.au/guidelines/index.cfm#brand> and, in particular, the Guidelines on the use of the Commonwealth Coat of Arms publication.

An appropriate citation for this report is:

Bureau of Infrastructure, Transport and Regional Economics (BITRE), 2018, Domestic aviation activity, Statistical Report, BITRE, Canberra ACT.

Contact us

This publication is available in PDF format. All other rights are reserved, including in relation to any Departmental logos or trade marks which may exist. For enquiries regarding the licence and any use of this publication, please contact:

Bureau of Infrastructure, Transport and Regional Economics (BITRE)
Department of Infrastructure, Regional Development and Cities
GPO Box 501, Canberra ACT 2601, Australia
Telephone: (international) +61 2 6274 7210
Fax: (international) +61 2 6274 6855
Email: bitre@infrastructure.gov.au
Website: www.bitre.gov.au

Inquiries

Should you require additional information about the statistics contained in this publication:

Nebojsa Pavlovic

Telephone (02) 6274 6817 or Facsimile (02) 6274 7727

Electronic mail: AVSTATS@infrastructure.gov.au

Nebojsa.Pavlovic@infrastructure.gov.au

Web site: <http://www.bitre.gov.au/statistics/aviation/domestic.aspx>

FOREWORD

This report provides an overview of domestic (including charter) commercial aviation activity in Australia for the month of October 2018.

The data cover revenue passengers carried by Australian-registered operators of scheduled regular public transport services over Australian flight stages and fixed-wing charter operators. These estimates include passengers carried between domestic airports on international flights operated by these carriers. The passengers carried refer to traffic on board by stages.

Estimates of passengers and aircraft movements for charter aviation are included in this publication, where BITRE confidentiality standards are met.

Individual routes shown are restricted to those with an average exceeding 8 000 passengers per month over the previous six months where two or more airlines operate in competition. For the month of October 2018, there were 65 such routes.

Information on the total network for the month of October 2018 and on the Regular Public Transport (RPT) network for the month of October 2018 is presented on page 2, with estimates for the year ended October 2018 presented on page 3.

Detailed information on the 65 individual routes can be found in the RPT summary pages 4-13 of this publication.

The top ten airports in terms of RPT passenger movements are shown on page 14.

Data on domestic RPT cargo movements at the top five cargo airports are provided on page 15. The table includes cargo carried on passenger flights operated by the Qantas group (including Jetstar), Virgin Australia, Air North and Skippers as well as the cargo carried by dedicated freighter aircraft operated by Qantas Freight, Toll Priority and Virgin Australia Cargo.

The long-term trends for the top ten competitive RPT routes are presented graphically on pages 16-25.

Domestic RPT passenger movements at the top 50 regional airports are presented on pages 26-27.

Tables providing estimates of domestic charter aviation activity are shown on page 28. BITRE confidentiality standards restrict publication of detailed estimates for individual Australian airports, with the exception of Perth Airport.

A list of definitions can be found on page 29.

This report was prepared by the Aviation Statistics Section of the Bureau of Infrastructure, Transport and Regional Economics with data provided by airlines.

Estimates are included where data were not available and data presented in this publication may contain revisions to previously published data.

Where figures have been rounded, discrepancies may occur between sums of component items and totals, and in percentage changes which are derived from figures prior to rounding.

CONTENTS

Highlights	1
Total network	2
RPT network	2
Top competitive routes	4
Top ten airports – passenger movements	14
Top five airports – cargo movements	15
Top ten routes	16
1. Melbourne – Sydney	16
2. Brisbane – Sydney.....	17
3. Brisbane – Melbourne	18
4. Gold Coast – Sydney	19
5. Adelaide – Melbourne	20
6. Melbourne – Perth	21
7. Gold Coast – Melbourne	22
8. Adelaide – Sydney	23
9. Perth – Sydney	24
10. Hobart – Melbourne	25
Top fifty regional airports	26
Domestic charter activity	28
Definitions	29

This page is intentionally left blank.

HIGHLIGHTS

There were 5.73 million passengers carried on Australian domestic commercial aviation (including charter operations) in October 2018, an increase of 1.7 per cent on October 2017. For the month of October 2018 there were 59 533 aircraft trips, an increase of 0.1 per cent compared to October 2017.

5.50 million passengers were carried on RPT flights in October 2018, an increase of 1.4 per cent on October 2017.

For the year ending October 2018 there were 61.18 million RPT passengers, an increase of 2.5 per cent on the year ending October 2017.

RPT revenue passenger kilometres (RPKs) performed were 6.44 billion for the month, up 1.3 per cent compared with October 2017. Capacity, measured by available seat kilometres (ASKs), increased by 1.1 per cent compared with October 2017 to a total of 7.81 billion.

With RPT passenger traffic increasing at a faster rate than capacity, the industry wide load factor (RPKs/ASKs) increased from 82.3 per cent in October 2017 to 82.4 per cent in October 2018. Load factors on individual routes increased on 33 of the 65 RPT routes.

For the month of October 2018, Melbourne – Sydney remained Australia's busiest RPT route with 821 285 passengers, an increase of 1.3 per cent compared with October 2017. It was followed by Brisbane – Sydney with 430 052 passengers (up 2.6 per cent) and Brisbane – Melbourne with 331 030 passengers (up 0.8 per cent).

The greatest percentage increase in RPT passenger numbers, compared to October 2017, was on the Kalgoorlie – Perth route (up 24.8 per cent). There were large increases on a number of other routes, including Hamilton Island – Sydney (up 13.4 per cent), Perth – Port Hedland (up 13.1 per cent) and Brisbane – Hobart (up 12.6 per cent).

Routes with traffic decreases in October 2018 compared with October 2017 included Brisbane – Proserpine (down 11.9 per cent), Darwin – Perth (down 10.5 per cent), Brisbane – Darwin (down 9.3 per cent) and Brisbane – Gladstone (down 8.2 per cent).

In October 2018, Sydney remained Australia's busiest domestic airport with 2.49 million passenger movements, followed by Melbourne with 2.33 million passenger movements and Brisbane with 1.56 million passenger movements.

Total cargo movements at Australian airports on domestic RPT flights were 43.3 thousand tonnes in October 2018, an increase of 9.4 per cent compared with October 2017.

In October 2018, there were 2.25 million domestic passenger movements through regional airports, 1.6 per cent higher than in October 2017. Out of the top 50 regional airports, the strongest growth was at Kalgoorlie airport (up 23.4 per cent on October 2017), while the largest decrease was recorded at Toowoomba Wellcamp airport (down 14.5 per cent on October 2017).

Fixed-wing charter operators carried 230.1 thousand passengers in October 2018, an increase of 8.8 per cent on October 2017. Perth Airport accounted for 37.8 per cent of all charter passengers in Australia.

TOTAL NETWORK

Summary of monthly commercial aviation activity

	Oct 2017	Oct 2018	% Change
Total passengers carried (millions)	5.63	5.73	1.7
Aircraft trips (000s)	59.5	59.5	0.1

Note: Regular Public Transport and charter aviation activity
Helicopter, joyflights and sightseeing charter flights not included.

RPT NETWORK

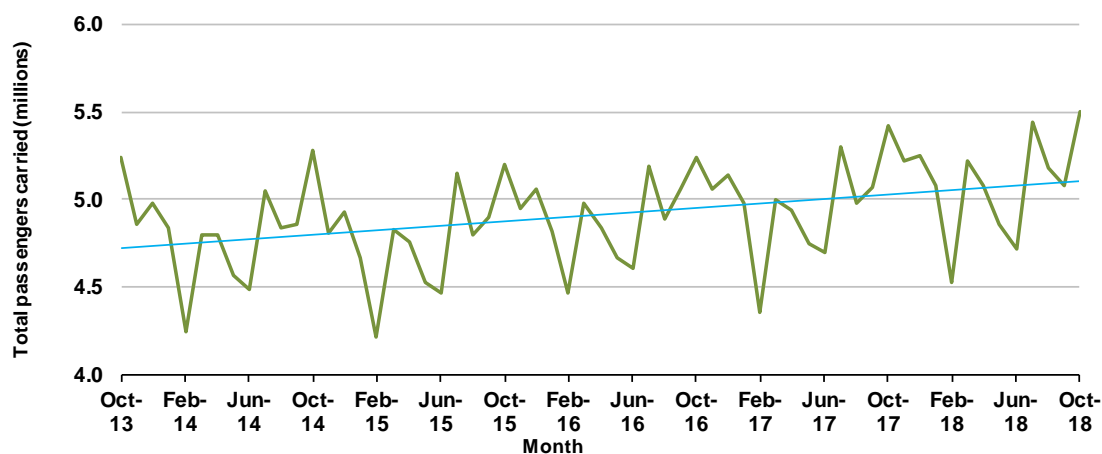
Summary of monthly RPT activity

	Oct 2017	Oct 2018	% Change
Total passengers carried (millions)	5.42	5.50	1.4
Revenue passenger kilometres (billions)	6.35	6.44	1.3
Available seats (millions)	6.72	6.82	1.5
Available seat kilometres (billions)	7.72	7.81	1.1
Load factor %	82.3	82.4	0.1 *
Aircraft trips (000s)	55.4	55.6	0.5

* percentage point difference

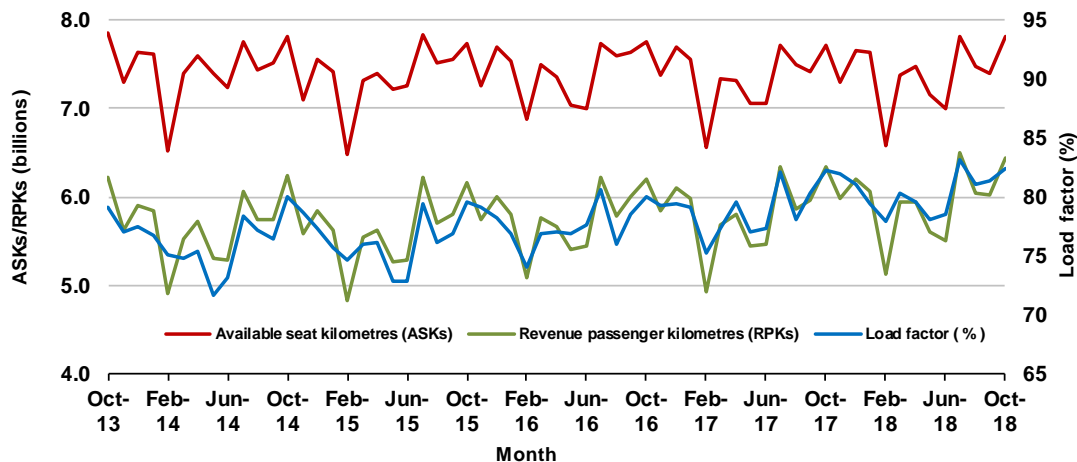
Domestic RPT passenger traffic

(monthly)



RPT Network utilisation

(monthly)



TOTAL NETWORK

Summary of annual commercial aviation activity

	YE Oct 2017	YE Oct 2018	% Change
Total passengers carried (millions)	62.14	63.65	2.4
Aircraft trips (000s)	685.5	676.0	-1.4

Note: Regular Public Transport and charter aviation activity
Helicopter, joyflights and sightseeing charter flights not included.

RPT NETWORK

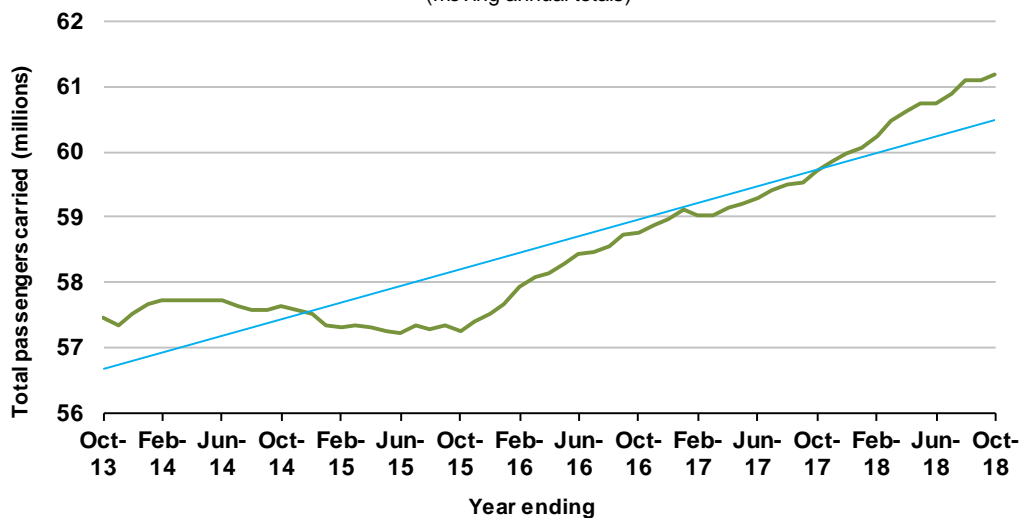
Summary of annual RPT activity

	YE Oct 2017	YE Oct 2018	% Change
Total passengers carried (millions)	59.69	61.18	2.5
Revenue passenger kilometres (billions)	69.77	71.37	2.3
Available seats (millions)	77.11	77.57	0.6
Available seat kilometres (billions)	88.30	88.66	0.4
Load factor %	79.0	80.5	1.5 *
Aircraft trips (000s)	639.2	631.3	-1.2

* percentage point difference

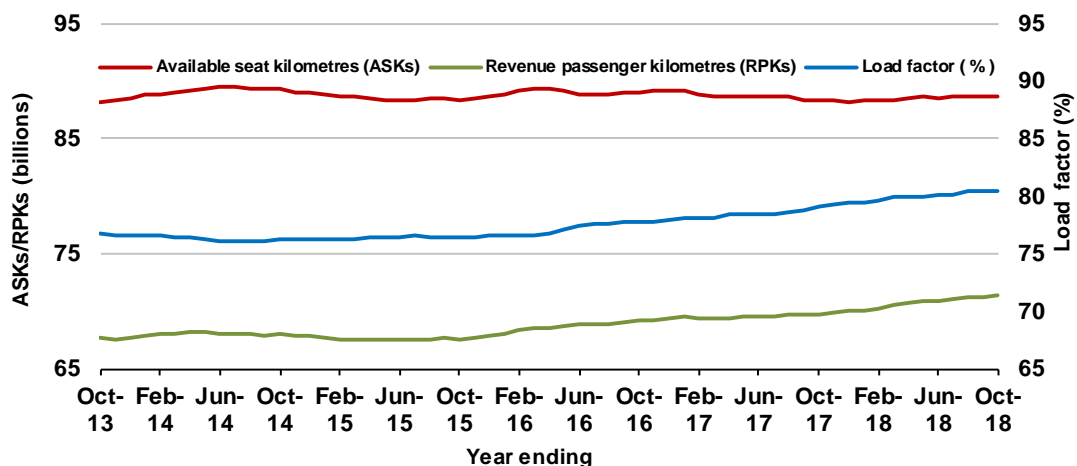
Domestic RPT passenger traffic

(moving annual totals)



RPT Network utilisation

(moving annual totals)



TOP COMPETITIVE ROUTES

Table 1: Passengers carried (000s) — annual activity

	City-Pair	YE Oct 2017	YE Oct 2018	% Change
1	Melbourne - Sydney	9 034.5	9 290.2	2.8
2	Brisbane - Sydney	4 723.2	4 820.9	2.1
3	Brisbane - Melbourne	3 536.5	3 568.7	0.9
4	Gold Coast - Sydney	2 717.6	2 751.4	1.2
5	Adelaide - Melbourne	2 436.1	2 498.8	2.6
6	Melbourne - Perth	2 035.3	2 106.3	3.5
7	Gold Coast - Melbourne	2 006.6	2 058.1	2.6
8	Adelaide - Sydney	1 892.3	1 914.7	1.2
9	Perth - Sydney	1 720.2	1 722.1	0.1
10	Hobart - Melbourne	1 620.0	1 647.2	1.7
11	Brisbane - Cairns	1 375.2	1 339.8	-2.6
12	Canberra - Melbourne	1 119.4	1 170.9	4.6
13	Cairns - Sydney	1 127.1	1 137.2	0.9
14	Brisbane - Townsville	955.9	997.2	4.3
15	Brisbane - Perth	967.3	967.1	0.0
16	Canberra - Sydney	954.0	959.3	0.6
17	Launceston - Melbourne	916.3	955.7	4.3
18	Cairns - Melbourne	842.3	854.8	1.5
19	Adelaide - Brisbane	838.9	852.7	1.6
20	Brisbane - Mackay	689.7	739.2	7.2
21	Hobart - Sydney	650.6	700.3	7.6
22	Brisbane - Canberra	589.6	640.4	8.6
23	Adelaide - Perth	613.9	634.5	3.3
24	Sunshine Coast - Sydney	572.5	623.9	9.0
25	Brisbane - Newcastle	587.6	583.7	-0.7
26	Melbourne - Sunshine Coast	474.5	541.6	14.1
27	Brisbane - Rockhampton	533.6	512.7	-3.9
28	Melbourne - Newcastle	470.8	492.5	4.6
29	Karratha - Perth	443.7	441.2	-0.6
30	Ballina - Sydney	399.0	435.1	9.1
31	Brisbane - Darwin	406.9	384.5	-5.5
32	Perth - Port Hedland	340.5	358.2	5.2
33	Coffs Harbour - Sydney	345.1	342.4	-0.8
34	Broome - Perth	302.7	340.2	12.4
35	Darwin - Sydney	320.9	314.1	-2.1
36	Darwin - Melbourne	307.2	307.6	0.1
37	Newman - Perth	285.9	303.4	6.1
38	Launceston - Sydney	288.0	289.9	0.6
39	Kalgoorlie - Perth	240.3	271.3	12.9
40	Brisbane - Proserpine	250.0	258.3	3.3
41	Brisbane - Gladstone	289.2	254.7	-11.9
42	Albury - Sydney	224.7	225.2	0.3
43	Brisbane - Hobart	210.4	224.4	6.6
44	Melbourne - Mildura	210.5	224.2	6.5
45	Adelaide - Gold Coast	211.6	222.4	5.1
46	Hamilton Island - Sydney	206.9	205.7	-0.5
47	Darwin - Perth	195.3	198.8	1.8
48	Ayers Rock - Sydney	190.4	196.2	3.1
49	Adelaide - Canberra	180.1	196.0	8.9
50	Brisbane - Emerald	199.0	195.6	-1.7

continued

Table 1: (continued) Passengers carried (000s) — annual activity

	City-Pair	YE Oct 2017	YE Oct 2018	% Change
51	Dubbo - Sydney	191.4	190.0	-0.7
52	Port Macquarie - Sydney	192.9	188.1	-2.5
53	Sydney - Wagga Wagga	184.8	181.8	-1.6
54	Sydney - Tamworth	181.6	175.7	-3.2
55	Adelaide - Port Lincoln	172.4	169.9	-1.5
56	Sydney - Townsville	159.5	166.6	4.4
57	Brisbane - Bundaberg	176.0	164.4	-6.6
58	Cairns - Townsville	141.1	148.9	5.6
59	Proserpine - Sydney	22.8	139.4	NA (a)
60	Brisbane - Mount Isa	124.5	129.6	4.0
61	Adelaide - Alice Springs	123.7	129.4	4.7
62	Brisbane - Hamilton Island	132.1	123.3	-6.7
63	Armidale - Sydney	126.9	123.0	-3.1
64	Geraldton - Perth	113.6	112.4	-1.0
65	Alice Springs - Darwin	117.7	111.7	-5.1
	Total domestic network	59 694.8	61 177.0	2.5

(a) Proserpine - Sydney route included from September 2017, prior data not shown.

Table 2: Passengers carried (000s) — monthly activity

	City-Pair	Oct 2017	Oct 2018	% Change
1	Melbourne - Sydney	810.6	821.3	1.3
2	Brisbane - Sydney	419.0	430.1	2.6
3	Brisbane - Melbourne	328.4	331.0	0.8
4	Gold Coast - Sydney	243.7	240.8	-1.2
5	Adelaide - Melbourne	222.0	221.3	-0.3
6	Melbourne - Perth	180.0	188.9	4.9
7	Gold Coast - Melbourne	193.1	187.1	-3.1
8	Adelaide - Sydney	170.6	171.5	0.5
9	Perth - Sydney	150.1	151.3	0.8
10	Hobart - Melbourne	137.1	141.6	3.2
11	Brisbane - Cairns	124.0	115.9	-6.5
12	Canberra - Melbourne	101.5	108.7	7.0
13	Cairns - Sydney	104.2	105.7	1.4
14	Brisbane - Townsville	83.5	86.9	4.0
15	Canberra - Sydney	84.6	86.6	2.3
16	Brisbane - Perth	88.2	86.3	-2.2
17	Cairns - Melbourne	81.8	81.9	0.1
18	Launceston - Melbourne	78.3	79.7	1.8
19	Adelaide - Brisbane	82.3	78.5	-4.6
20	Brisbane - Mackay	63.9	65.1	1.9
21	Hobart - Sydney	61.0	64.3	5.4
22	Brisbane - Canberra	54.4	60.2	10.8
23	Sunshine Coast - Sydney	57.5	60.1	4.6
24	Adelaide - Perth	56.4	56.5	0.2
25	Brisbane - Newcastle	52.0	52.0	0.2
26	Melbourne - Sunshine Coast	48.8	50.5	3.5
27	Brisbane - Rockhampton	47.7	46.2	-3.1
28	Melbourne - Newcastle	45.9	44.7	-2.4
29	Ballina - Sydney	39.1	40.4	3.3
30	Karratha - Perth	37.9	39.6	4.3
31	Perth - Port Hedland	30.2	34.2	13.1
32	Broome - Perth	33.5	31.9	-4.6
33	Brisbane - Darwin	35.1	31.8	-9.3
34	Coffs Harbour - Sydney	32.2	30.6	-5.2
35	Newman - Perth	25.7	28.4	10.7
36	Darwin - Sydney	28.5	27.9	-2.4
37	Darwin - Melbourne	26.5	26.7	0.8
38	Kalgoorlie - Perth	21.3	26.5	24.8
39	Launceston - Sydney	21.3	23.3	9.5
40	Brisbane - Proserpine	26.1	23.0	-11.9
41	Brisbane - Gladstone	23.8	21.8	-8.2
42	Brisbane - Hobart	18.9	21.3	12.6
43	Albury - Sydney	19.7	21.3	7.7
44	Hamilton Island - Sydney	18.4	20.9	13.4
45	Melbourne - Mildura	19.7	20.3	3.1
46	Adelaide - Gold Coast	19.4	19.5	0.4
47	Adelaide - Canberra	17.4	18.4	6.2
48	Brisbane - Emerald	18.0	17.4	-3.3
49	Dubbo - Sydney	17.3	17.2	-0.3
50	Ayers Rock - Sydney	17.5	16.9	-3.6

continued

Table 2: (continued) Passengers carried (000s) — monthly activity

	City-Pair	Oct 2017	Oct 2018	% Change
51	Sydney - Townsville	15.6	16.5	5.7
52	Port Macquarie - Sydney	16.7	16.4	-1.6
53	Darwin - Perth	18.3	16.4	-10.5
54	Sydney - Wagga Wagga	16.7	16.2	-2.9
55	Sydney - Tamworth	15.5	15.5	0.6
56	Adelaide - Port Lincoln	14.2	15.0	5.5
57	Brisbane - Bundaberg	14.9	14.5	-2.4
58	Cairns - Townsville	13.0	13.4	2.6
59	Proserpine - Sydney	11.8	12.8	8.4
60	Adelaide - Alice Springs	12.1	12.5	3.4
61	Brisbane - Mount Isa	11.0	11.7	5.7
62	Armidale - Sydney	11.7	11.0	-6.0
63	Geraldton - Perth	9.5	10.3	8.6
64	Brisbane - Hamilton Island	11.1	10.2	-7.9
65	Alice Springs - Darwin	10.9	10.0	-7.9
	Total domestic network	5 421.0	5 498.8	1.4

Table 3: Available seats (000s) — monthly activity

	City-Pair	Oct 2017	Oct 2018	% Change
1	Melbourne - Sydney	936.0	958.9	2.4
2	Brisbane - Sydney	496.7	503.1	1.3
3	Brisbane - Melbourne	384.3	386.7	0.6
4	Gold Coast - Sydney	277.8	277.0	-0.3
5	Adelaide - Melbourne	263.5	266.4	1.1
6	Melbourne - Perth	207.2	219.2	5.8
7	Gold Coast - Melbourne	216.1	209.5	-3.1
8	Adelaide - Sydney	198.1	205.0	3.5
9	Perth - Sydney	182.0	176.7	-2.9
10	Hobart - Melbourne	157.7	179.5	13.8
11	Brisbane - Cairns	142.8	131.4	-7.9
12	Canberra - Melbourne	151.0	156.5	3.6
13	Cairns - Sydney	120.0	124.3	3.6
14	Brisbane - Townsville	106.1	109.2	2.9
15	Canberra - Sydney	110.0	112.0	1.8
16	Brisbane - Perth	104.7	98.1	-6.3
17	Cairns - Melbourne	90.4	94.2	4.3
18	Launceston - Melbourne	92.3	98.3	6.5
19	Adelaide - Brisbane	99.7	94.9	-4.8
20	Brisbane - Mackay	77.8	82.6	6.1
21	Hobart - Sydney	71.0	75.7	6.6
22	Brisbane - Canberra	73.4	76.8	4.6
23	Sunshine Coast - Sydney	68.6	71.5	4.2
24	Adelaide - Perth	74.1	70.3	-5.1
25	Brisbane - Newcastle	67.5	67.2	-0.5
26	Melbourne - Sunshine Coast	54.3	56.5	4.0
27	Brisbane - Rockhampton	54.4	56.2	3.4
28	Melbourne - Newcastle	53.9	53.4	-0.9
29	Ballina - Sydney	46.7	47.0	0.7
30	Karratha - Perth	57.7	58.5	1.3
31	Perth - Port Hedland	45.1	47.5	5.4
32	Broome - Perth	42.3	40.7	-3.7
33	Brisbane - Darwin	42.9	40.3	-6.1
34	Coffs Harbour - Sydney	42.8	41.1	-3.8
35	Newman - Perth	45.4	49.7	9.6
36	Darwin - Sydney	37.9	38.3	1.2
37	Darwin - Melbourne	32.7	33.5	2.3
38	Kalgoorlie - Perth	36.5	44.0	20.5
39	Launceston - Sydney	24.5	26.8	9.5
40	Brisbane - Proserpine	29.9	29.0	-3.0
41	Brisbane - Gladstone	31.4	30.7	-2.2
42	Brisbane - Hobart	21.2	23.7	12.3
43	Albury - Sydney	26.5	29.3	10.7
44	Hamilton Island - Sydney	26.8	28.7	7.0
45	Melbourne - Mildura	28.8	31.2	8.3
46	Adelaide - Gold Coast	21.9	22.8	4.4
47	Adelaide - Canberra	26.4	26.8	1.5
48	Brisbane - Emerald	24.5	23.5	-3.9
49	Dubbo - Sydney	22.7	23.0	1.5
50	Ayers Rock - Sydney	21.5	22.2	3.3

continued

Table 3: (continued) Available seats (000s) — monthly activity

	City-Pair	Oct 2017	Oct 2018	% Change
51	Sydney - Townsville	20.4	20.4	-0.1
52	Port Macquarie - Sydney	21.1	20.4	-3.2
53	Darwin - Perth	22.1	23.6	6.7
54	Sydney - Wagga Wagga	25.0	23.6	-5.4
55	Sydney - Tamworth	23.6	23.9	1.1
56	Adelaide - Port Lincoln	24.9	25.5	2.2
57	Brisbane - Bundaberg	19.4	19.4	0.4
58	Cairns - Townsville	23.1	21.0	-9.0
59	Proserpine - Sydney	14.4	14.8	2.9
60	Adelaide - Alice Springs	15.8	15.7	-0.7
61	Brisbane - Mount Isa	15.4	15.1	-2.3
62	Armidale - Sydney	16.3	16.2	-0.3
63	Geraldton - Perth	19.0	19.4	2.3
64	Brisbane - Hamilton Island	15.7	14.2	-9.2
65	Alice Springs - Darwin	19.2	19.7	2.9
	Total domestic network	6 715.2	6 818.7	1.5

Table 4: Load factors (%) — monthly activity

	City-Pair	Oct 2017	Oct 2018	% Point diff
1	Melbourne - Sydney	86.6	85.7	-0.9
2	Brisbane - Sydney	84.4	85.5	1.1
3	Brisbane - Melbourne	85.5	85.6	0.1
4	Gold Coast - Sydney	87.7	86.9	-0.8
5	Adelaide - Melbourne	84.3	83.1	-1.2
6	Melbourne - Perth	86.9	86.2	-0.7
7	Gold Coast - Melbourne	89.3	89.3	0.0
8	Adelaide - Sydney	86.1	83.6	-2.5
9	Perth - Sydney	82.5	85.6	3.1
10	Hobart - Melbourne	86.9	78.9	-8.0
11	Brisbane - Cairns	86.8	88.2	1.4
12	Canberra - Melbourne	67.2	69.4	2.2
13	Cairns - Sydney	86.8	85.0	-1.8
14	Brisbane - Townsville	78.7	79.5	0.8
15	Canberra - Sydney	77.0	77.4	0.4
16	Brisbane - Perth	84.3	88.0	3.7
17	Cairns - Melbourne	90.5	86.9	-3.6
18	Launceston - Melbourne	84.9	81.0	-3.9
19	Adelaide - Brisbane	82.6	82.7	0.1
20	Brisbane - Mackay	82.1	78.8	-3.3
21	Hobart - Sydney	85.9	84.9	-1.0
22	Brisbane - Canberra	74.1	78.5	4.4
23	Sunshine Coast - Sydney	83.7	84.1	0.4
24	Adelaide - Perth	76.1	80.4	4.3
25	Brisbane - Newcastle	77.0	77.5	0.5
26	Melbourne - Sunshine Coast	89.8	89.4	-0.4
27	Brisbane - Rockhampton	87.7	82.2	-5.5
28	Melbourne - Newcastle	85.1	83.8	-1.3
29	Ballina - Sydney	83.8	86.0	2.2
30	Karratha - Perth	65.7	67.7	2.0
31	Perth - Port Hedland	67.0	71.9	4.9
32	Broome - Perth	79.2	78.5	-0.7
33	Brisbane - Darwin	81.8	79.1	-2.7
34	Coffs Harbour - Sydney	75.4	74.3	-1.1
35	Newman - Perth	56.6	57.2	0.6
36	Darwin - Sydney	75.3	72.7	-2.6
37	Darwin - Melbourne	81.1	79.9	-1.2
38	Kalgoorlie - Perth	58.2	60.3	2.1
39	Launceston - Sydney	86.7	86.8	0.1
40	Brisbane - Proserpine	87.1	79.1	-8.0
41	Brisbane - Gladstone	75.8	71.2	-4.6
42	Brisbane - Hobart	89.4	89.7	0.3
43	Albury - Sydney	74.5	72.5	-2.0
44	Hamilton Island - Sydney	68.6	72.8	4.2
45	Melbourne - Mildura	68.2	64.9	-3.3
46	Adelaide - Gold Coast	88.5	85.1	-3.4
47	Adelaide - Canberra	65.8	68.8	3.0
48	Brisbane - Emerald	73.4	73.8	0.4
49	Dubbo - Sydney	76.0	74.6	-1.4
50	Ayers Rock - Sydney	81.8	76.3	-5.5

continued

Table 4: (continued) Load factors (%) — monthly activity

	City-Pair	Oct 2017	Oct 2018	% Point diff
51	Sydney - Townsville	76.4	80.8	4.4
52	Port Macquarie - Sydney	79.3	80.6	1.3
53	Darwin - Perth	82.7	69.3	-13.4
54	Sydney - Wagga Wagga	66.9	68.7	1.8
55	Sydney - Tamworth	65.4	65.1	-0.3
56	Adelaide - Port Lincoln	57.1	59.0	1.9
57	Brisbane - Bundaberg	76.9	74.8	-2.1
58	Cairns - Townsville	56.4	63.5	7.1
59	Proserpine - Sydney	82.1	86.5	4.4
60	Adelaide - Alice Springs	76.7	79.9	3.2
61	Brisbane - Mount Isa	71.6	77.5	5.9
62	Armidale - Sydney	72.0	67.9	-4.1
63	Geraldton - Perth	50.0	53.0	3.0
64	Brisbane - Hamilton Island	70.7	71.7	1.0
65	Alice Springs - Darwin	56.9	50.9	-6.0
	Total domestic network	82.3	82.4	0.1

Table 5: Aircraft trips ^(a) — monthly activity

	City-Pair	Oct 2017	Oct 2018	% Change
1	Melbourne - Sydney	5 156	5 428	5.3
2	Brisbane - Sydney	3 042	3 124	2.7
3	Brisbane - Melbourne	2 259	2 289	1.3
4	Gold Coast - Sydney	1 565	1 587	1.4
5	Adelaide - Melbourne	1 651	1 682	1.9
6	Melbourne - Perth	957	1 029	7.5
7	Gold Coast - Melbourne	1 140	1 108	-2.8
8	Adelaide - Sydney	1 179	1 265	7.3
9	Perth - Sydney	774	777	0.4
10	Hobart - Melbourne	976	980	0.4
11	Brisbane - Cairns	893	900	0.8
12	Canberra - Melbourne	1 009	987	-2.2
13	Cairns - Sydney	654	670	2.4
14	Brisbane - Townsville	740	757	2.3
15	Canberra - Sydney	1 406	1 448	3.0
16	Brisbane - Perth	527	527	0.0
17	Cairns - Melbourne	475	478	0.6
18	Launceston - Melbourne	734	750	2.2
19	Adelaide - Brisbane	595	599	0.7
20	Brisbane - Mackay	629	625	-0.6
21	Hobart - Sydney	439	476	8.4
22	Brisbane - Canberra	527	551	4.6
23	Sunshine Coast - Sydney	409	424	3.7
24	Adelaide - Perth	497	480	-3.4
25	Brisbane - Newcastle	510	440	-13.7
26	Melbourne - Sunshine Coast	306	316	3.3
27	Brisbane - Rockhampton	687	734	6.8
28	Melbourne - Newcastle	302	294	-2.6
29	Ballina - Sydney	304	303	-0.3
30	Karratha - Perth	507	519	2.4
31	Perth - Port Hedland	368	383	4.1
32	Broome - Perth	371	337	-9.2
33	Brisbane - Darwin	260	246	-5.4
34	Coffs Harbour - Sydney	437	395	-9.6
35	Newman - Perth	334	362	8.4
36	Darwin - Sydney	224	226	0.9
37	Darwin - Melbourne	186	181	-2.7
38	Kalgoorlie - Perth	303	337	11.2
39	Launceston - Sydney	142	166	16.9
40	Brisbane - Proserpine	168	164	-2.4
41	Brisbane - Gladstone	412	402	-2.4
42	Brisbane - Hobart	120	138	15.0
43	Albury - Sydney	495	537	8.5
44	Hamilton Island - Sydney	162	178	9.9
45	Melbourne - Mildura	417	434	4.1
46	Adelaide - Gold Coast	124	128	3.2
47	Adelaide - Canberra	156	160	2.6
48	Brisbane - Emerald	326	315	-3.4
49	Dubbo - Sydney	527	478	-9.3
50	Ayers Rock - Sydney	122	124	1.6

continued

Table 5: (continued) Aircraft trips ^(a) — monthly activity

	City-Pair	Oct 2017	Oct 2018	% Change
51	Sydney - Townsville	116	116	0.0
52	Port Macquarie - Sydney	369	317	-14.1
53	Darwin - Perth	132	140	6.1
54	Sydney - Wagga Wagga	489	474	-3.1
55	Sydney - Tamworth	378	353	-6.6
56	Adelaide - Port Lincoln	644	660	2.5
57	Brisbane - Bundaberg	296	279	-5.7
58	Cairns - Townsville	368	333	-9.5
59	Proserpine - Sydney	80	82	2.5
60	Adelaide - Alice Springs	113	114	0.9
61	Brisbane - Mount Isa	151	177	17.2
62	Armidale - Sydney	388	390	0.5
63	Geraldton - Perth	190	195	2.6
64	Brisbane - Hamilton Island	125	106	-15.2
65	Alice Springs - Darwin	167	166	-0.6
	Total domestic network	55 383	55 635	0.5

(a) Includes RPT Cargo flights.

TOP TEN AIRPORTS – PASSENGER MOVEMENTS

Table 6: Top ten airports, RPT passenger movements (000s) - annual activity

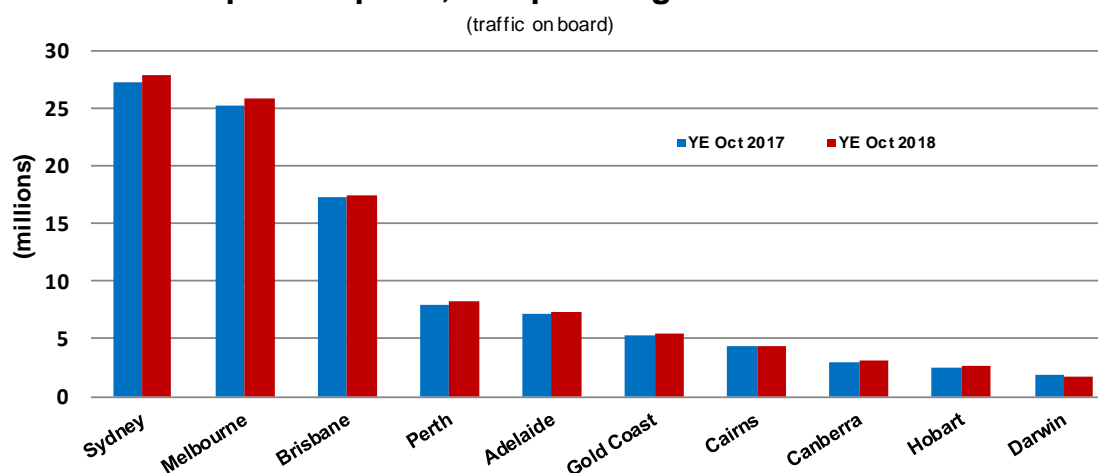
Airport	YE Oct 2017	YE Oct 2018	% Change	% of Total
1 Sydney	27 199.7	27 801.9	2.2	22.7
2 Melbourne	25 217.8	25 888.3	2.7	21.2
3 Brisbane	17 236.4	17 403.7	1.0	14.2
4 Perth	7 990.9	8 208.0	2.7	6.7
5 Adelaide	7 097.0	7 336.6	3.4	6.0
6 Gold Coast	5 380.5	5 509.2	2.4	4.5
7 Cairns	4 307.4	4 327.5	0.5	3.5
8 Canberra	3 004.5	3 151.8	4.9	2.6
9 Hobart	2 481.6	2 648.9	6.7	2.2
10 Darwin	1 805.8	1 765.8	-2.2	1.4
Total top ten airports	101 721.6	104 041.8	2.3	85.0
Total domestic network	119 389.6	122 354.0	2.5	100.0

Table 7: Top ten airports, RPT passenger movements (000s) - monthly activity

Airport	Oct 2017	Oct 2018	% Change	% of Total
1 Sydney	2 446.8	2 485.1	1.6	22.6
2 Melbourne	2 301.1	2 325.7	1.1	21.1
3 Brisbane	1 560.1	1 564.6	0.3	14.2
4 Perth	714.7	743.7	4.1	6.8
5 Adelaide	653.6	657.5	0.6	6.0
6 Gold Coast	497.3	490.6	-1.4	4.5
7 Cairns	401.6	397.3	-1.1	3.6
8 Canberra	272.0	292.3	7.4	2.7
9 Hobart	217.1	235.8	8.6	2.1
10 Darwin	158.9	152.4	-4.1	1.4
Total top ten airports	9 223.2	9 344.9	1.3	85.0
Total domestic network	10 841.9	10 997.7	1.4	100.0

Note: Airport passenger movement numbers are the sum of passenger arrivals and departures at each airport.

Top ten airports, RPT passenger movements



TOP FIVE AIRPORTS – CARGO MOVEMENTS

Table 8: Top five airports, domestic RPT cargo movements (000s tonnes) - annual activity

Airport	YE Oct 2017	YE Oct 2018	% Change	% of Total
1 Melbourne	130.9	135.6	3.5	28.6
2 Sydney	105.4	109.2	3.6	23.0
3 Brisbane	66.3	72.5	9.4	15.3
4 Perth	64.1	67.1	4.5	14.1
5 Adelaide	26.6	28.3	6.1	6.0
Total top five airports	393.4	412.6	4.9	87.0
Total domestic network	452.2	474.1	4.9	100.0

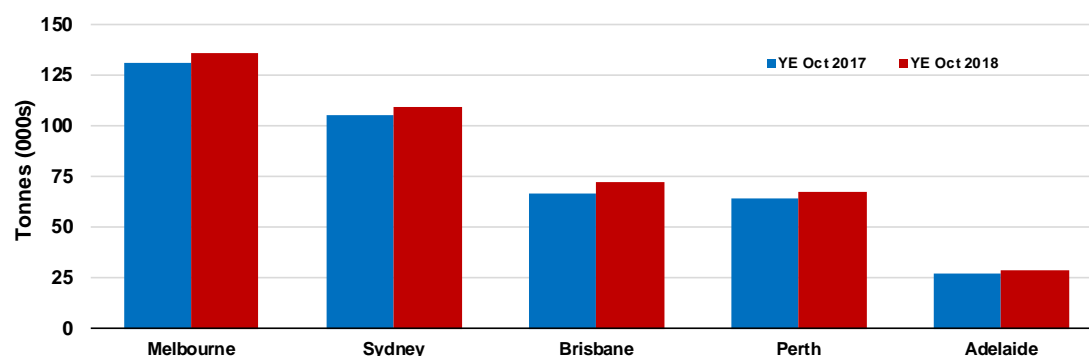
Table 9: Top five airports, domestic RPT cargo movements (000s tonnes) - monthly activity

Airport	Oct 2017	Oct 2018	% Change	% of Total
1 Melbourne	11.5	11.7	2.2	27.0
2 Sydney	9.4	10.0	6.3	23.1
3 Brisbane	5.7	6.9	21.6	16.0
4 Perth	5.6	6.4	15.1	14.8
5 Adelaide	2.4	2.6	8.8	6.0
Total top five airports	34.5	37.7	9.1	87.0
Total domestic network	39.6	43.3	9.4	100.0

Note: Airport cargo tonnes are the sum of cargo tonnes on arrivals and departures at each airport.

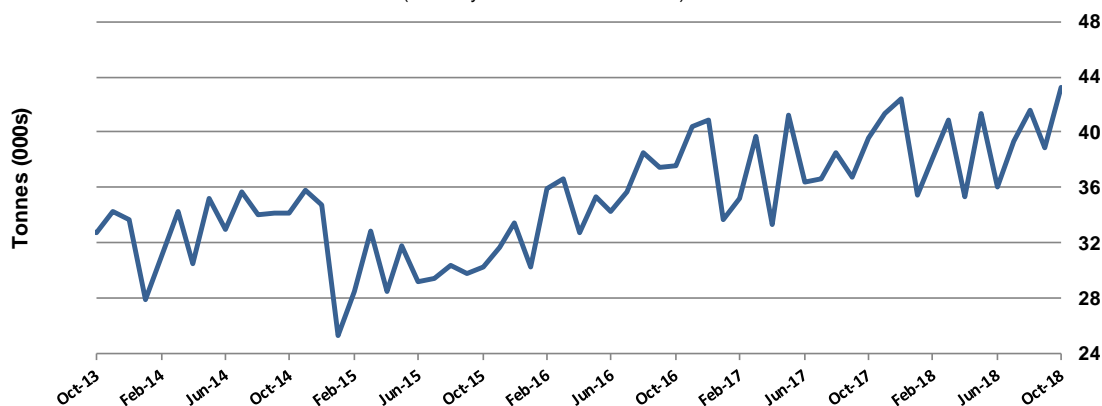
Top five airports, cargo movements

(Domestic cargo traffic - traffic on board)



Total domestic network - cargo movement

(monthly totals - traffic on board)



Note: Airport cargo tonnes are the sum of cargo tonnes on arrivals and departures at each airport.

TOP TEN ROUTES

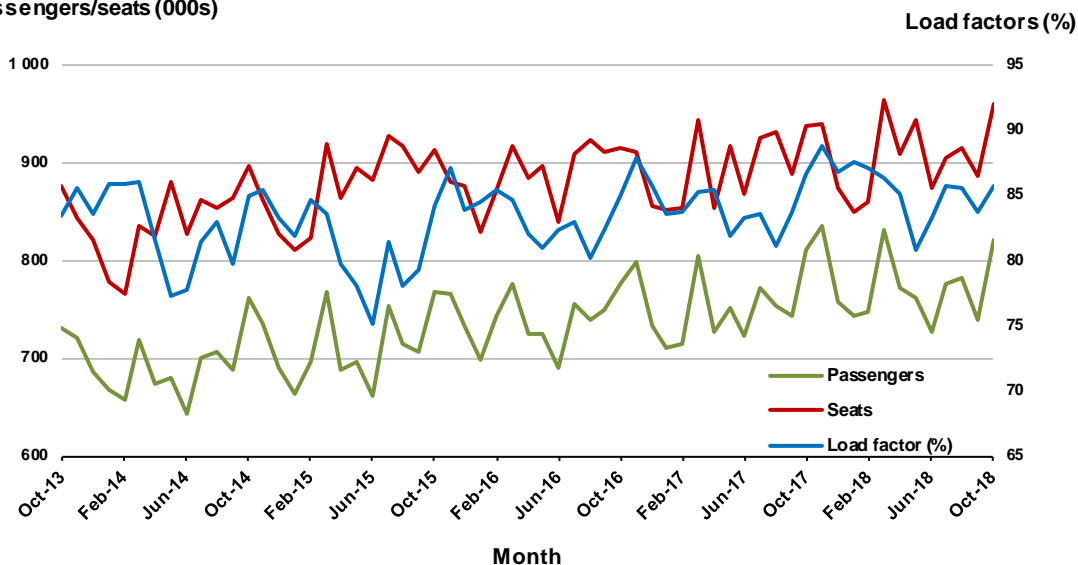
1. Melbourne - Sydney

Monthly data

	Oct 2017	Oct 2018	% Change
Passengers carried (000s)	810.6	821.3	1.3
Seats (000s)	936.0	958.9	2.4
Load factor %	86.6	85.7	-0.9 *
Aircraft trips	5 156	5 428	5.3

* percentage point difference

Passengers/seats (000s)

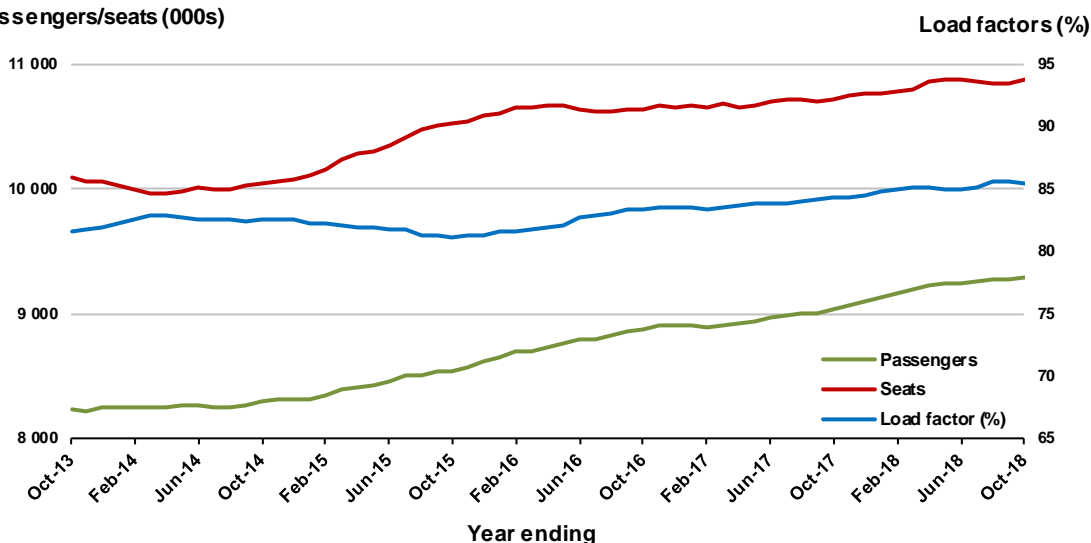


Moving annual data

	YE Oct 2017	YE Oct 2018	% Change
Passengers carried (000s)	9 034.5	9 290.2	2.8
Seats (000s)	10 723.2	10 870.6	1.4
Load factor %	84.3	85.5	1.2 *
Aircraft trips	59 700	60 318	1.0

* percentage point difference

Passengers/seats (000s)

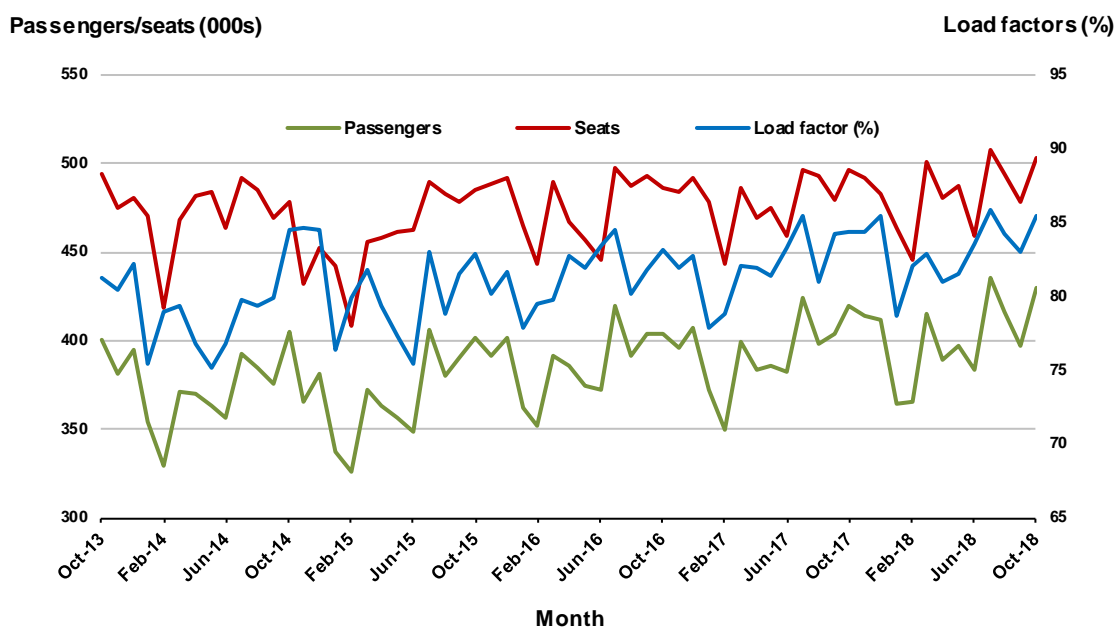


2. Brisbane - Sydney

Monthly data

	Oct 2017	Oct 2018	% Change
Passengers carried (000s)	419.0	430.1	2.6
Seats (000s)	496.7	503.1	1.3
Load factor %	84.4	85.5	1.1 *
Aircraft trips	3 042	3 124	2.7

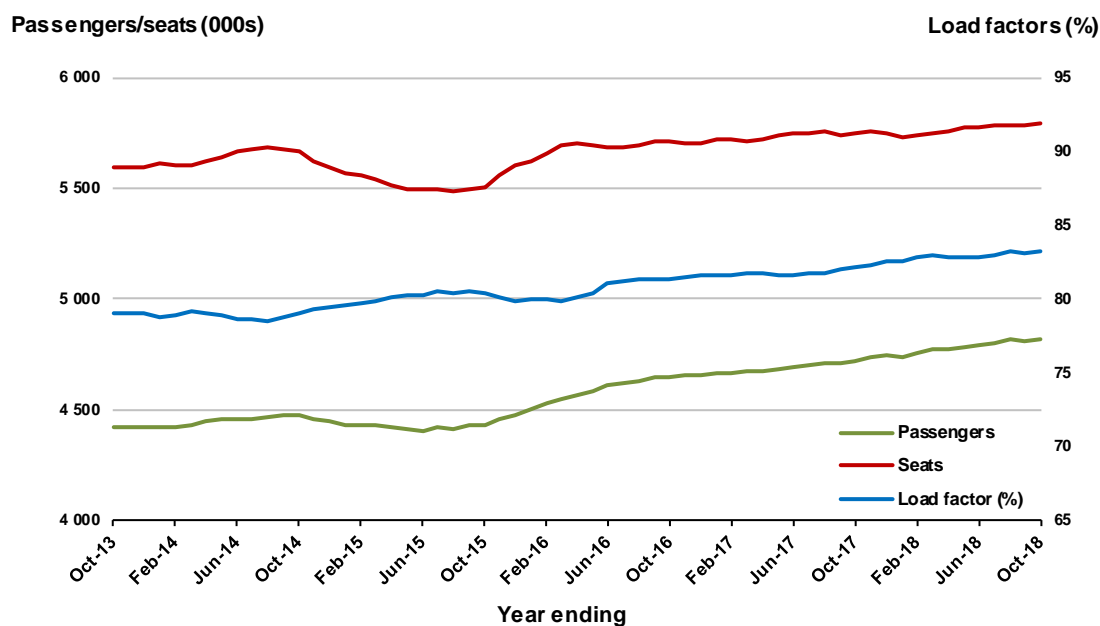
* percentage point difference



Moving annual data

	YE Oct 2017	YE Oct 2018	% Change
Passengers carried (000s)	4 723.2	4 820.9	2.1
Seats (000s)	5 751.3	5 794.0	0.7
Load factor %	82.1	83.2	1.1 *
Aircraft trips	35 470	35 256	-0.6

* percentage point difference

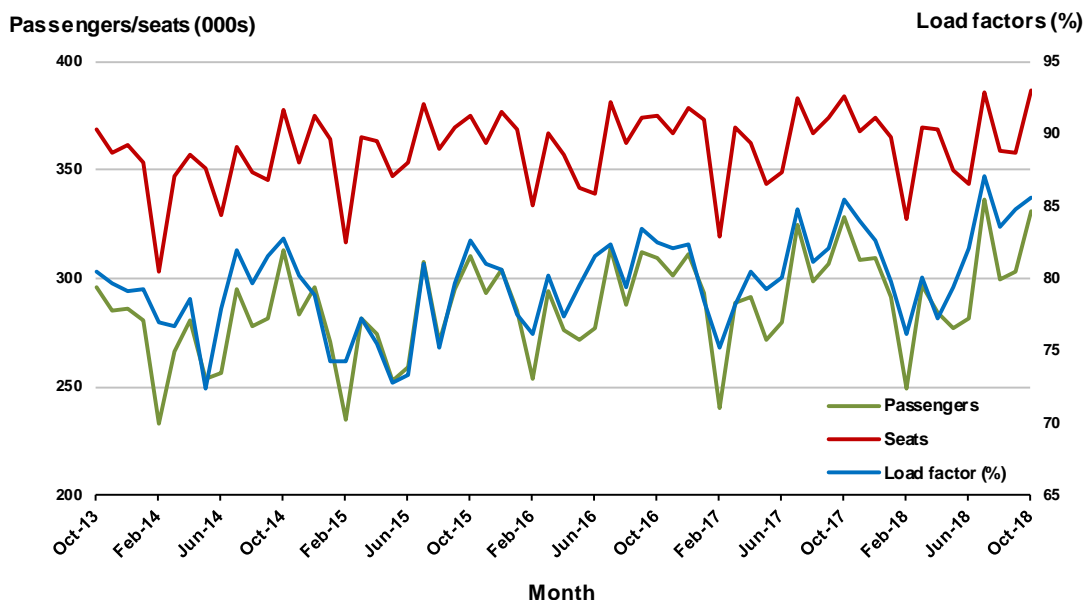


3. Brisbane - Melbourne

Monthly data

	Oct 2017	Oct 2018	% Change
Passengers carried (000s)	328.4	331.0	0.8
Seats (000s)	384.3	386.7	0.6
Load factor %	85.5	85.6	0.1 *
Aircraft trips	2 259	2 289	1.3

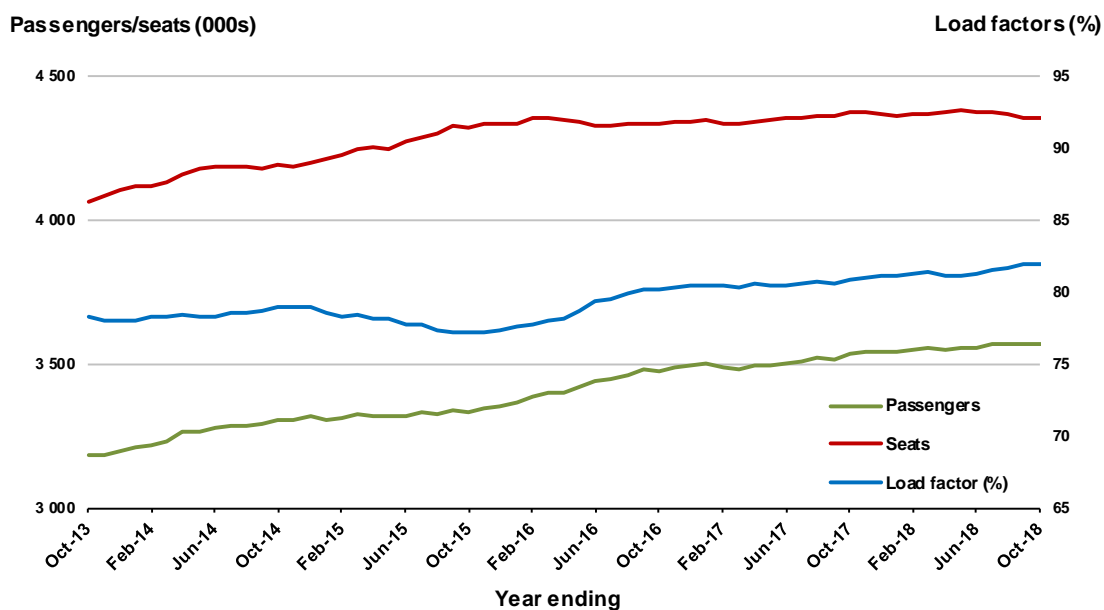
* percentage point difference



Moving annual data

	YE Oct 2017	YE Oct 2018	% Change
Passengers carried (000s)	3 536.5	3 568.7	0.9
Seats (000s)	4 371.4	4 353.8	-0.4
Load factor %	80.9	82.0	1.1 *
Aircraft trips	25 818	25 578	-0.9

* percentage point difference



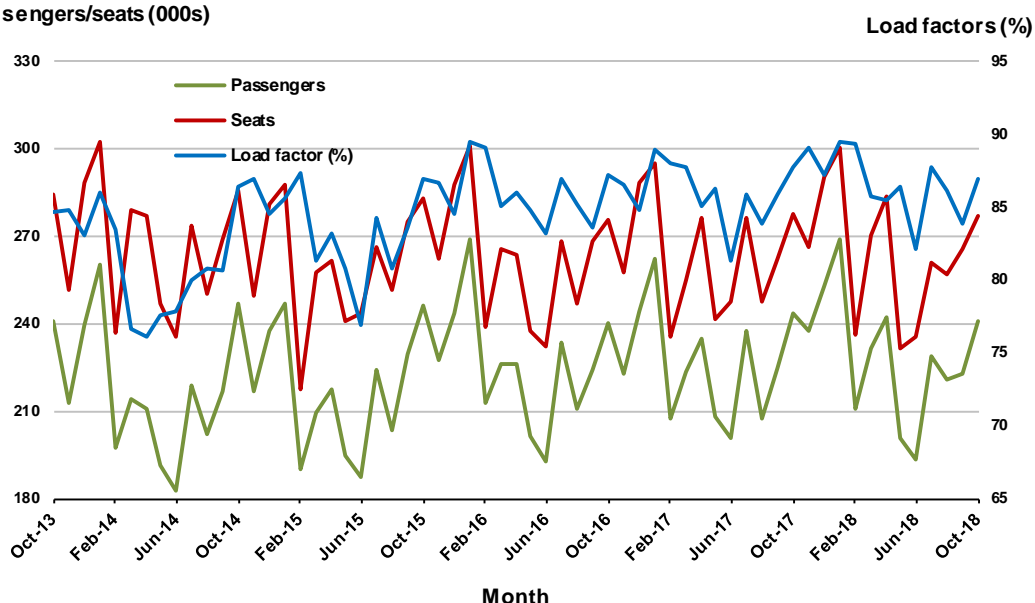
4. Gold Coast - Sydney

Monthly data

	Oct 2017	Oct 2018	% Change
Passengers carried (000s)	243.7	240.8	-1.2
Seats (000s)	277.8	277.0	-0.3
Load factor %	87.7	86.9	-0.8 *
Aircraft trips	1 565	1 587	1.4

* percentage point difference

Passengers/seats (000s)

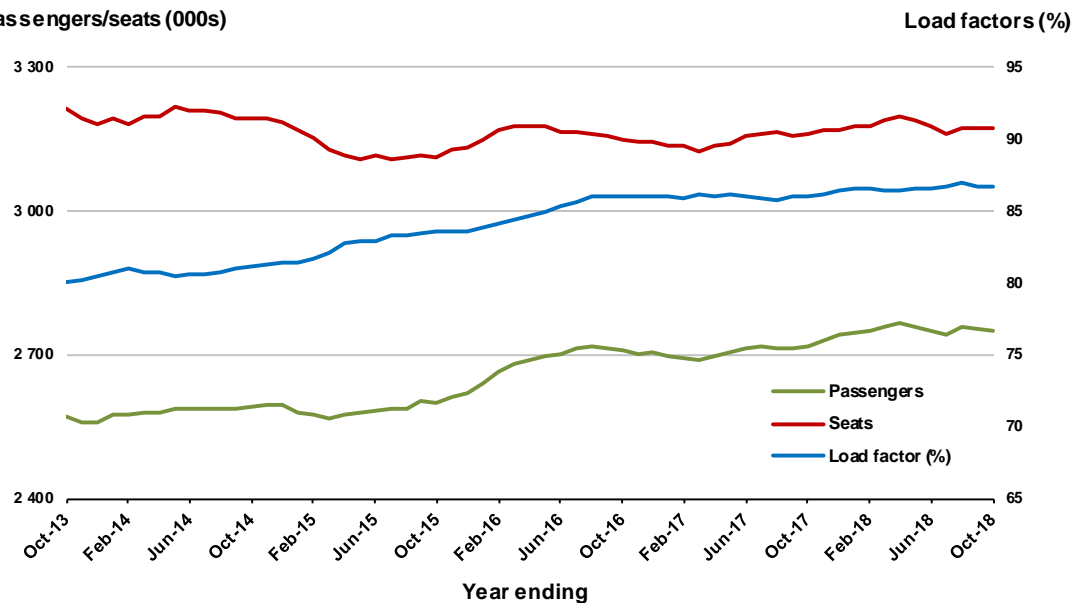


Moving annual data

	YE Oct 2017	YE Oct 2018	% Change
Passengers carried (000s)	2 717.6	2 751.4	1.2
Seats (000s)	3 159.6	3 173.9	0.5
Load factor %	86.0	86.7	0.7 *
Aircraft trips	18 047	18 012	-0.2

* percentage point difference

Passengers/seats (000s)



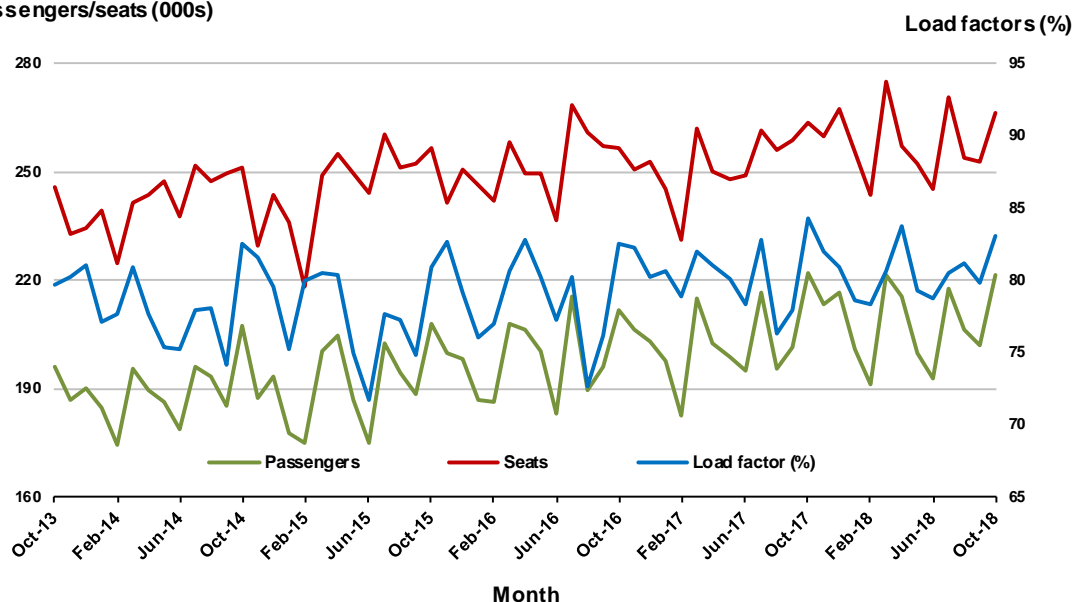
5. Adelaide - Melbourne

Monthly data

	Oct 2017	Oct 2018	% Change
Passengers carried (000s)	222.0	221.3	-0.3
Seats (000s)	263.5	266.4	1.1
Load factor %	84.3	83.1	-1.2 *
Aircraft trips	1 651	1 682	1.9

* percentage point difference

Passengers/seats (000s)

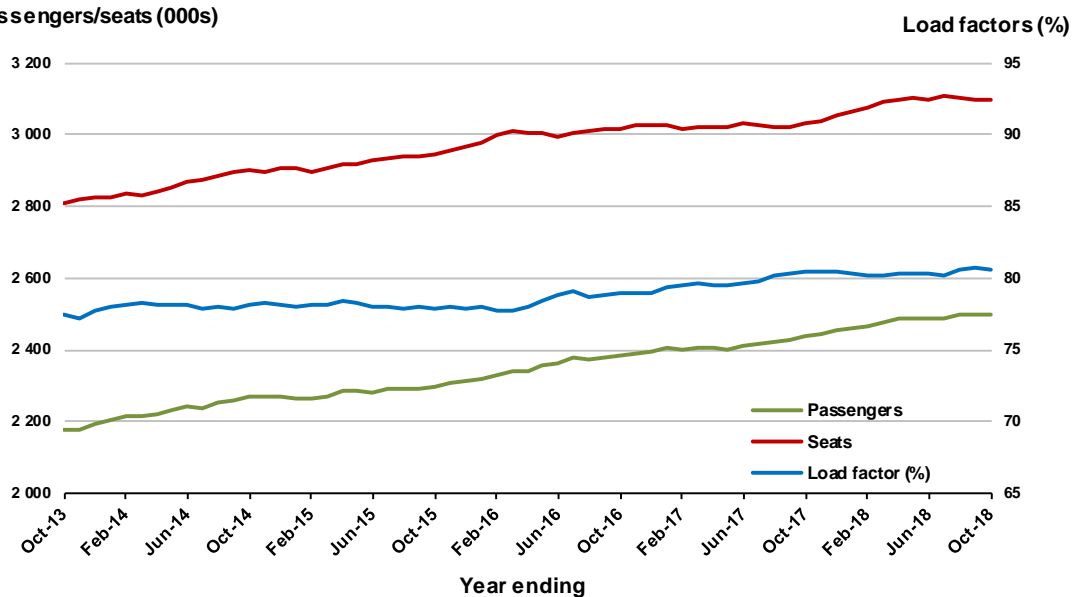


Moving annual data

	YE Oct 2017	YE Oct 2018	% Change
Passengers carried (000s)	2 436.1	2 498.8	2.6
Seats (000s)	3 029.4	3 100.2	2.3
Load factor %	80.4	80.6	0.2 *
Aircraft trips	19 064	19 249	1.0

* percentage point difference

Passengers/seats (000s)



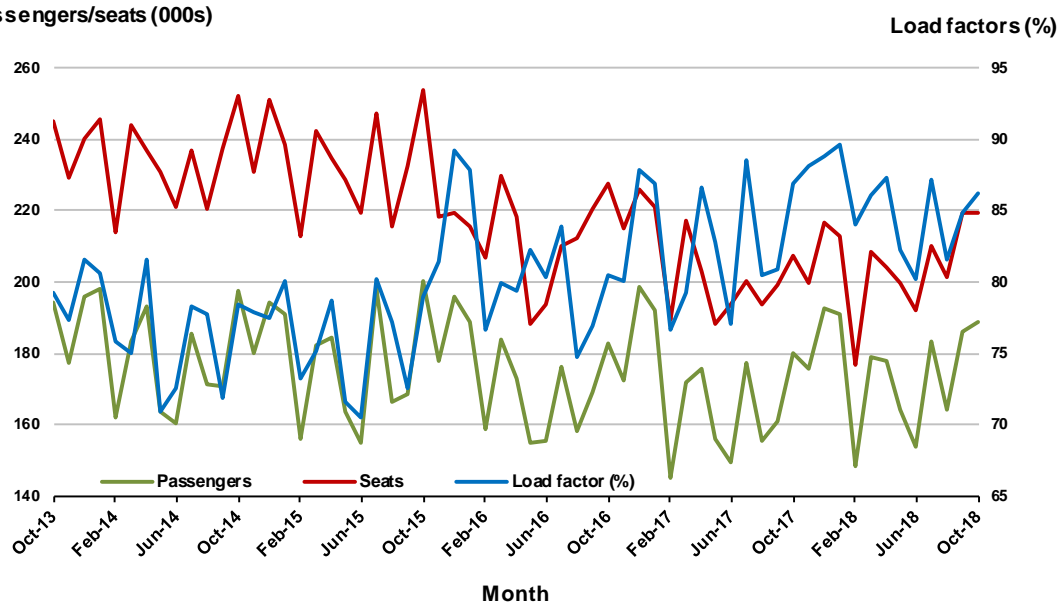
6. Melbourne - Perth

Monthly data

	Oct 2017	Oct 2018	% Change
Passengers carried (000s)	180.0	188.9	4.9
Seats (000s)	207.2	219.2	5.8
Load factor %	86.9	86.2	-0.7 *
Aircraft trips	957	1 029	7.5

* percentage point difference

Passengers/seats (000s)

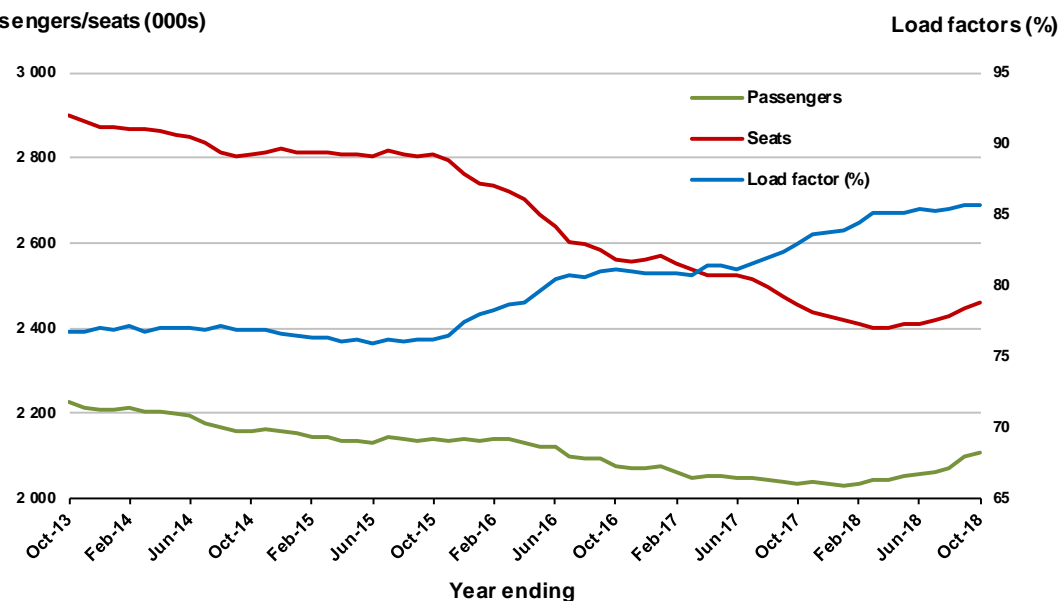


Moving annual data

	YE Oct 2017	YE Oct 2018	% Change
Passengers carried (000s)	2 035.3	2 106.3	3.5
Seats (000s)	2 453.8	2 460.4	0.3
Load factor %	82.9	85.6	2.7 *
Aircraft trips	11 164	11 538	3.4

* percentage point difference

Passengers/seats (000s)



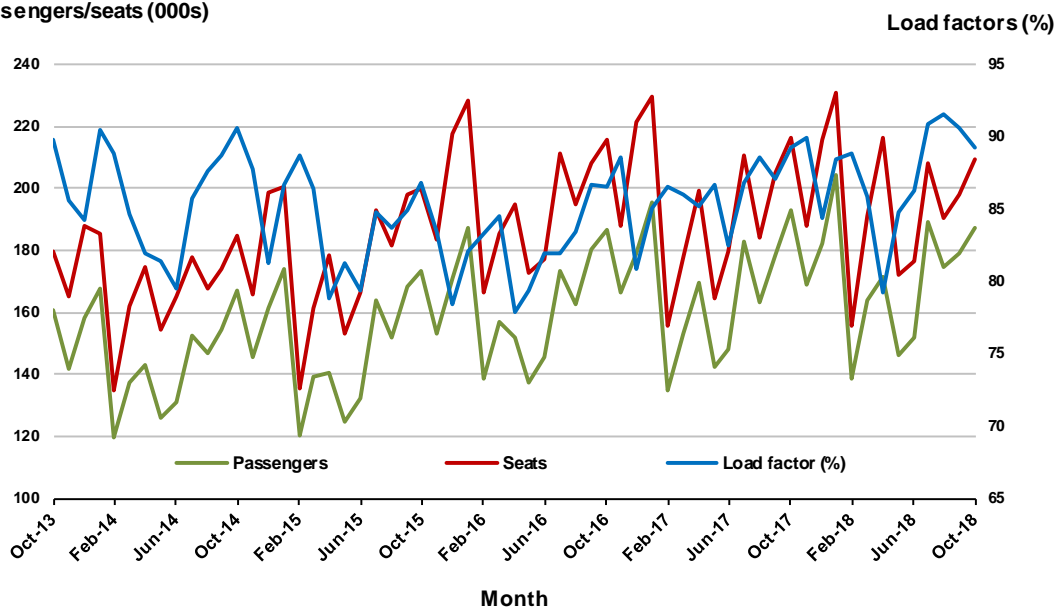
7. Gold Coast - Melbourne

Monthly data

	Oct 2017	Oct 2018	% Change
Passengers carried (000s)	193.1	187.1	-3.1
Seats (000s)	216.1	209.5	-3.1
Load factor %	89.3	89.3	0.0 *
Aircraft trips	1 140	1 108	-2.8

* percentage point difference

Passengers/seats (000s)

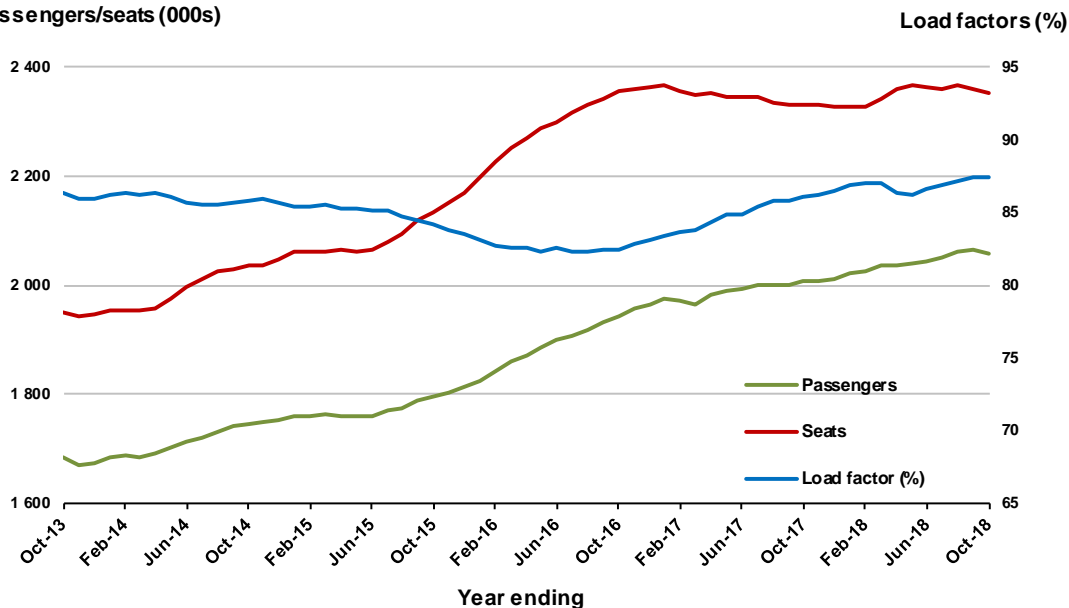


Moving annual data

	YE Oct 2017	YE Oct 2018	% Change
Passengers carried (000s)	2 006.6	2 058.1	2.6
Seats (000s)	2 331.6	2 353.1	0.9
Load factor %	86.1	87.5	1.4 *
Aircraft trips	12 433	12 468	0.3

* percentage point difference

Passengers/seats (000s)



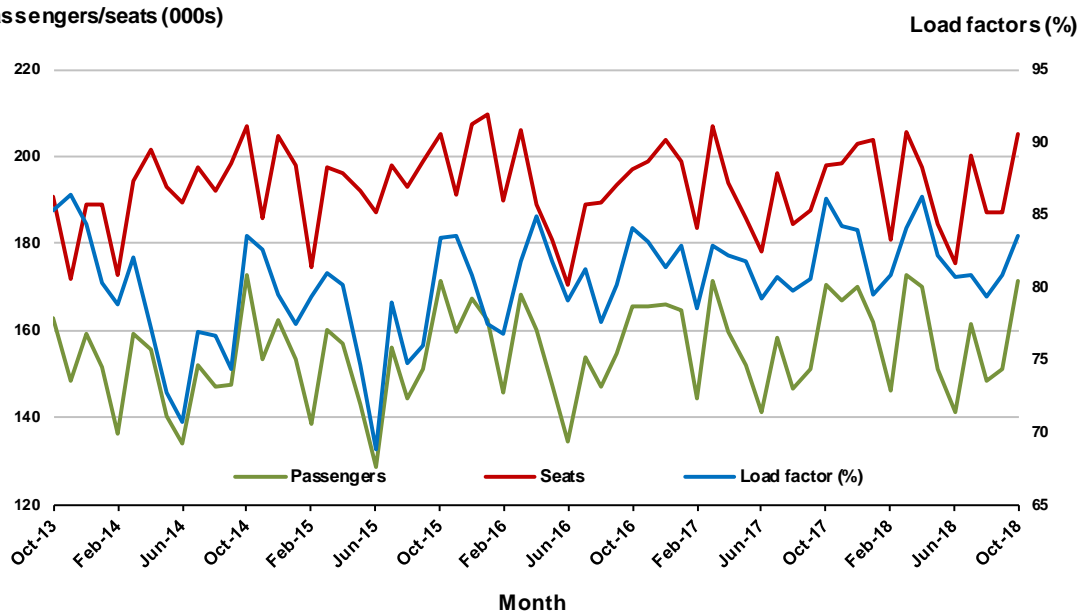
8. Adelaide - Sydney

Monthly data

	Oct 2017	Oct 2018	% Change
Passengers carried (000s)	170.6	171.5	0.5
Seats (000s)	198.1	205.0	3.5
Load factor %	86.1	83.6	-2.5 *
Aircraft trips	1 179	1 265	7.3

* percentage point difference

Passengers/seats (000s)

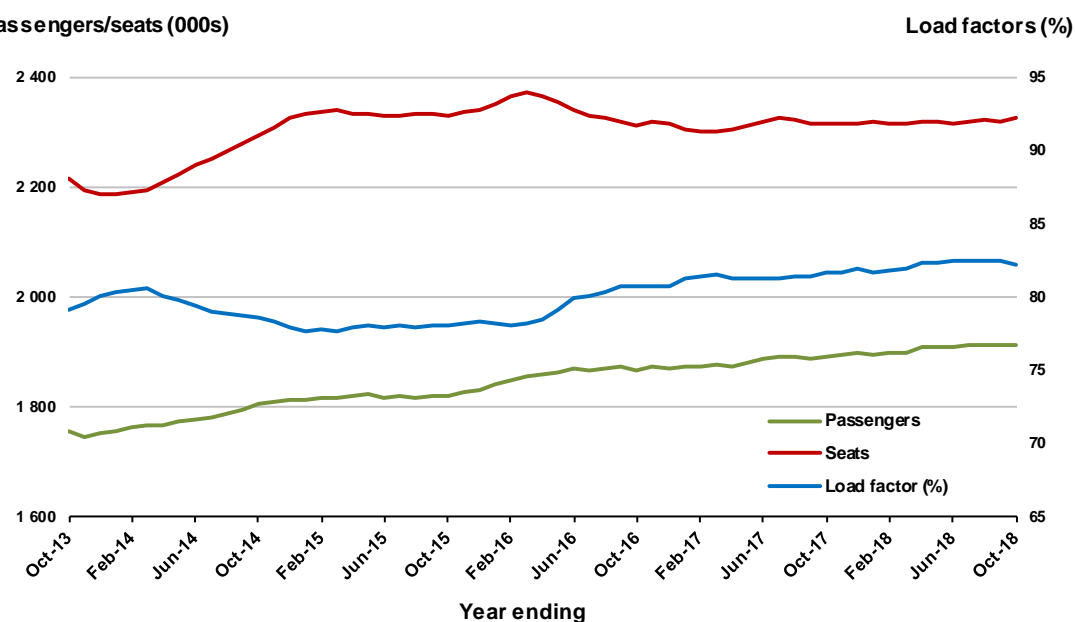


Moving annual data

	YE Oct 2017	YE Oct 2018	% Change
Passengers carried (000s)	1 892.3	1 914.7	1.2
Seats (000s)	2 317.2	2 327.9	0.5
Load factor %	81.7	82.2	0.6 *
Aircraft trips	14 015	13 973	-0.3

* percentage point difference

Passengers/seats (000s)



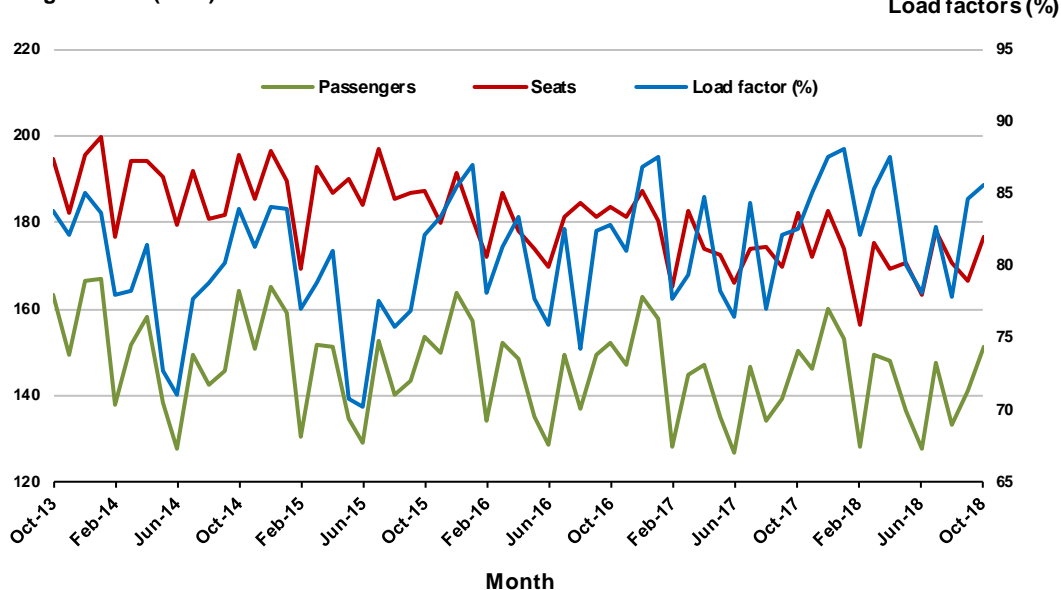
9. Perth - Sydney

Monthly data

	Oct 2017	Oct 2018	% Change
Passengers carried (000s)	150.1	151.3	0.8
Seats (000s)	182.0	176.7	-2.9
Load factor %	82.5	85.6	3.1 *
Aircraft trips	774	777	0.4

* percentage point difference

Passengers/seats (000s)

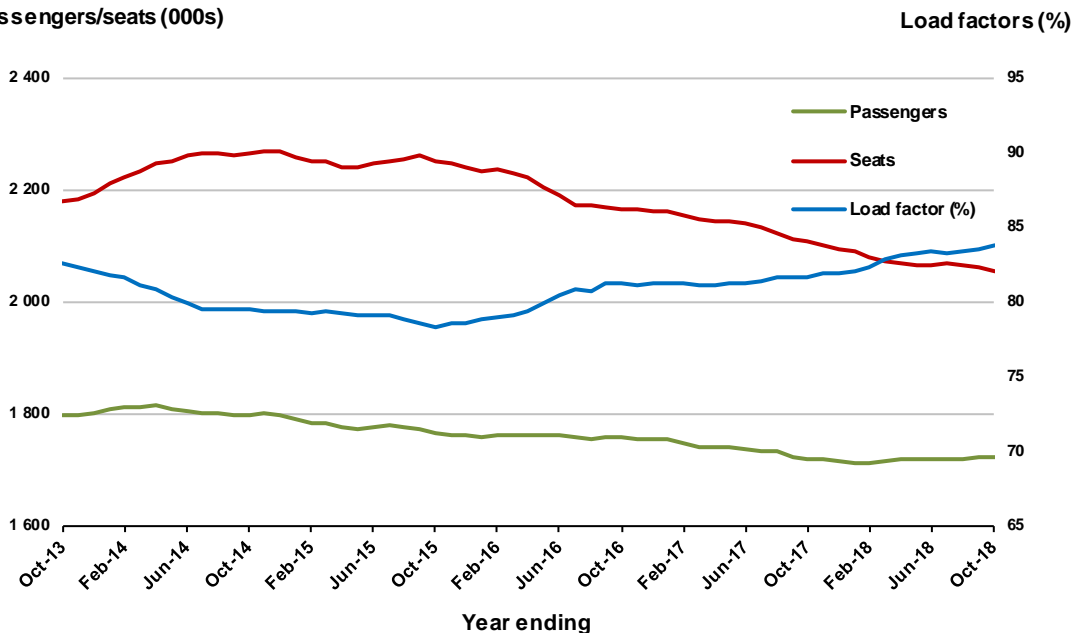


Moving annual data

	YE Oct 2017	YE Oct 2018	% Change
Passengers carried (000s)	1 720.2	1 722.1	0.1
Seats (000s)	2 108.7	2 055.5	-2.5
Load factor %	81.6	83.8	2.2 *
Aircraft trips	9 057	9 016	-0.5

* percentage point difference

Passengers/seats (000s)



10. Hobart - Melbourne

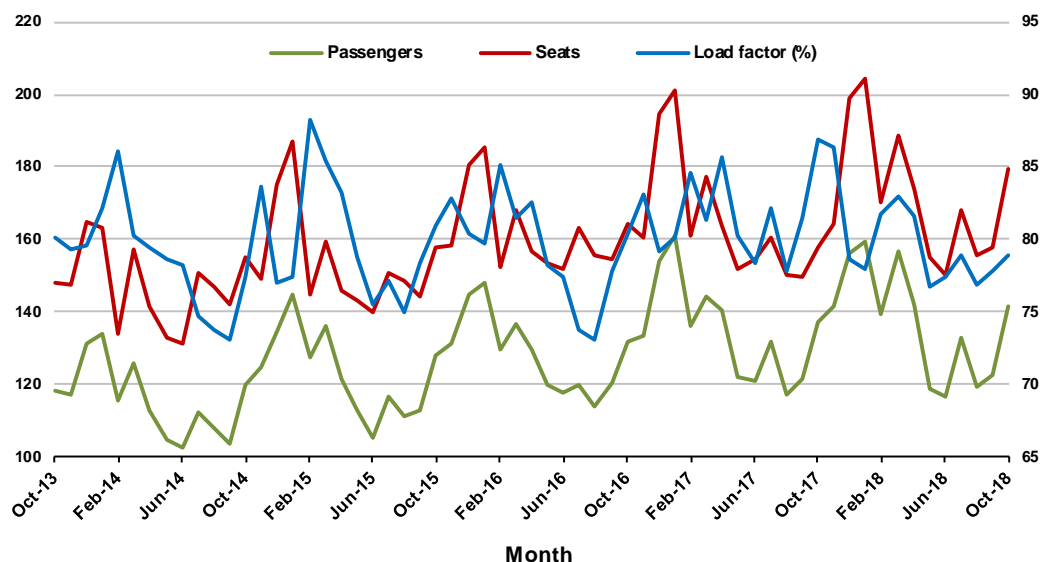
Monthly data

	Oct 2017	Oct 2018	% Change
Passengers carried (000s)	137.1	141.6	3.2
Seats (000s)	157.7	179.5	13.8
Load factor %	86.9	78.9	-8.0 *
Aircraft trips	976	980	0.4

* percentage point difference

Passengers/seats (000s)

Load factors (%)



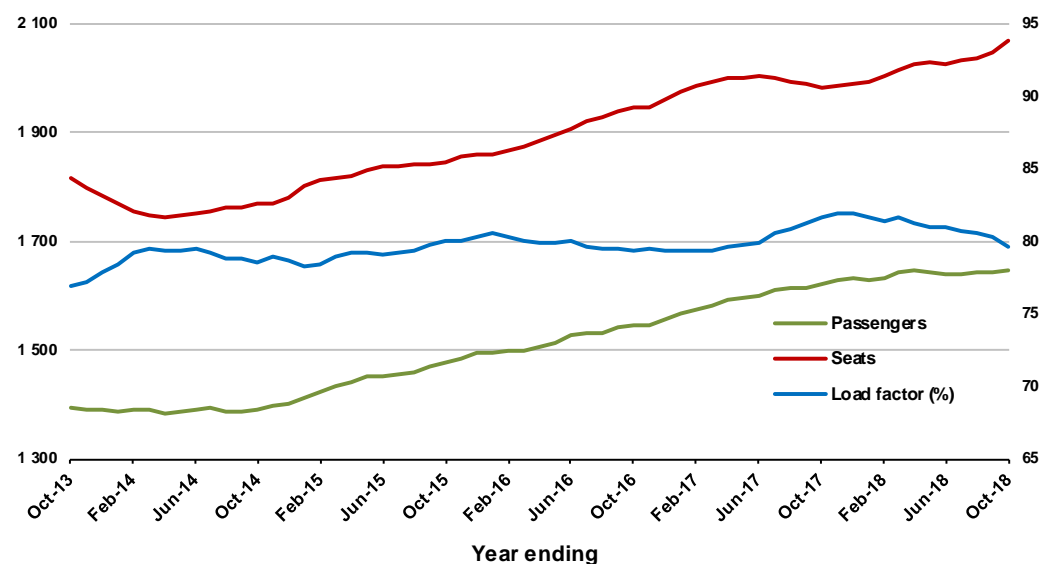
Moving annual data

	YE Oct 2017	YE Oct 2018	% Change
Passengers carried (000s)	1 620.0	1 647.2	1.7
Seats (000s)	1 982.8	2 067.4	4.3
Load factor %	81.7	79.7	-2.0 *
Aircraft trips	12 183	11 739	-3.6

* percentage point difference

Passengers/seats (000s)

Load factors (%)



TOP FIFTY REGIONAL AIRPORTS

Table 10: Top fifty regional airports (000s) — passenger movements, monthly

Airport	Oct 2017	Oct 2018	% Change
1 Cairns	401.6	397.3	-1.1
2 Hobart	217.1	235.8	8.6
3 Darwin	158.9	152.4	-4.1
4 Townsville	144.6	145.1	0.4
5 Launceston	110.8	115.1	3.8
6 Newcastle	118.4	112.5	-5.0
7 Mackay	71.9	74.7	3.9
8 Alice Springs	57.3	58.2	1.5
9 Ballina	49.6	50.9	2.7
10 Rockhampton	50.9	49.3	-3.1
11 Hamilton Island	40.2	42.1	4.8
12 Proserpine	43.6	41.9	-4.1
13 Ayers Rock	34.7	41.2	18.8
14 Karratha	38.1	39.6	3.8
15 Broome	39.2	37.9	-3.3
16 Coffs Harbour	37.9	36.0	-5.0
17 Port Hedland	31.4	35.1	11.7
18 Newman	25.8	28.4	10.2
19 Kalgoorlie	22.2	27.4	23.4
20 Mildura	23.5	24.5	4.3
21 Albury	23.8	23.5	-1.6
22 Gladstone	23.8	22.0	-7.7
23 Dubbo	21.3	19.9	-6.7
24 Mount Isa	18.0	19.1	5.7
25 Wagga Wagga	21.3	19.0	-10.8
26 Port Macquarie	19.7	18.9	-4.2
27 Emerald	18.0	17.4	-3.3
28 Tamworth	17.0	16.9	-0.9
29 Paraburdoo	14.6	16.3	11.3
30 Hervey Bay	15.9	15.2	-4.6
31 Port Lincoln	14.3	15.0	5.4
32 Bundaberg	14.9	14.6	-2.0
33 Devonport	14.2	13.2	-7.3
34 Toowoomba Wellcamp	14.4	12.3	-14.5
35 Armidale	12.5	11.7	-6.1
36 Geraldton	9.5	10.4	9.7
37 Moranbah	8.9	10.1	12.6
38 Kununurra	9.1	10.0	10.6
39 Thursday Island	8.9	9.6	7.7
40 Roma	7.5	8.3	10.0
41 Learmonth	7.1	7.6	7.1
42 Gove	7.9	7.6	-4.4
43 Orange	6.5	7.5	14.8
44 Mount Gambier	6.9	7.4	6.7
45 Weipa	7.3	7.3	0.9
46 Whyalla	6.1	7.2	17.4
47 Griffith	6.4	7.1	10.8
48 Olympic Dam	7.8	7.0	-9.8
49 Burnie	6.1	6.6	9.3
50 Broken Hill	5.9	6.5	9.9
Total top 50 regional airports	2 093.2	2 120.2	1.3
Total regional airports	2 213.9	2 249.0	1.6
Total domestic network	10 841.9	10 997.7	1.4

Note: Airport passenger movement numbers are the sum of passenger arrivals and departures at each airport.

Regional airports are defined as airports which are, according to the Australian Bureau of Statistics

"The Australian Statistical Geography Standard (ASGS)", not based in Major Urban areas.

Table 11: Top fifty regional airports (000s) — passenger movements, annual

Airport	YE Oct 2017	YE Oct 2018	% Change
1 Cairns	4 307.4	4 327.5	0.5
2 Hobart	2 481.6	2 648.9	6.7
3 Darwin	1 805.8	1 765.8	-2.2
4 Townsville	1 570.7	1 654.7	5.3
5 Launceston	1 335.6	1 383.6	3.6
6 Newcastle	1 280.0	1 264.9	-1.2
7 Mackay	779.8	842.2	8.0
8 Alice Springs	614.1	623.9	1.6
9 Rockhampton	566.0	553.4	-2.2
10 Ballina	506.0	538.1	6.3
11 Proserpine	399.6	461.9	15.6
12 Karratha	445.6	442.5	-0.7
13 Hamilton Island	447.4	424.8	-5.1
14 Broome	377.4	417.6	10.6
15 Ayers Rock	362.8	409.9	13.0
16 Coffs Harbour	413.2	406.4	-1.7
17 Port Hedland	351.1	367.6	4.7
18 Newman	286.9	304.0	5.9
19 Kalgoorlie	250.1	282.4	12.9
20 Mildura	253.4	271.9	7.3
21 Albury	269.1	263.0	-2.3
22 Gladstone	289.8	255.1	-12.0
23 Dubbo	236.9	223.5	-5.7
24 Wagga Wagga	223.1	221.4	-0.7
25 Port Macquarie	229.7	217.1	-5.5
26 Mount Isa	198.9	210.6	5.9
27 Emerald	199.2	195.8	-1.7
28 Tamworth	198.5	190.5	-4.1
29 Paraburdoo	166.7	176.9	6.1
30 Port Lincoln	172.6	170.2	-1.4
31 Hervey Bay	174.8	165.6	-5.2
32 Bundaberg	176.2	164.4	-6.7
33 Devonport	147.2	147.4	0.1
34 Toowoomba Wellcamp	150.9	141.1	-6.5
35 Armidale	132.6	130.5	-1.6
36 Geraldton	113.7	112.6	-1.0
37 Kununurra	104.7	105.4	0.7
38 Moranbah	120.0	102.5	-14.5
39 Thursday Island	100.1	100.9	0.8
40 Roma	83.3	86.9	4.2
41 Learmonth	82.3	86.4	5.1
42 Gove	83.9	84.8	1.1
43 Weipa	77.8	80.7	3.8
44 Mount Gambier	79.7	80.5	0.9
45 Griffith	72.9	76.7	5.2
46 Olympic Dam	64.5	76.6	18.9
47 Orange	61.6	75.5	22.5
48 Whyalla	64.0	74.8	16.9
49 Burnie	60.9	69.4	13.9
50 Broken Hill	59.7	69.3	16.0
Total top 50 regional airports	23 029.8	23 548.1	2.3
Total regional airports	24 302.0	24 914.7	2.5
Total domestic network	119 389.6	122 354.0	2.5

Note: Airport passenger movement numbers are the sum of passenger arrivals and departures at each airport. Regional airports are defined as airports which are, according to the Australian Bureau of Statistics "The Australian Statistical Geography Standard (ASGS)", not based in Major Urban areas.

DOMESTIC CHARTER ACTIVITY

Table 12: Charter passengers carried and aircraft trips - annual activity

	YE Oct 2017	YE Oct 2018	% Change
Total domestic charter passengers	2 440 297	2 471 650	1.3
Total domestic charter aircraft trips	46 259	44 635	-3.5

Note: Helicopter, joyflights and sightseeing charter flights not included.

Table 13: Charter passengers carried and aircraft trips - monthly activity

	Oct 2017	Oct 2018	% Change
Total domestic charter passengers	211 379	230 052	8.8
Total domestic charter aircraft trips	4 073	3 898	-4.3

Note: Helicopter, joyflights and sightseeing charter flights not included.

Table 14: Domestic airports - charter activity - annual

	YE Oct 2017	YE Oct 2018	% Change
Total domestic charter passenger movements	4 880 594	4 943 300	1.3
Total domestic charter aircraft movements	92 518	89 270	-3.5
Perth airport charter passenger movements	1 857 827	1 846 293	-0.6
Perth airport charter aircraft movements	31 786	30 212	-5.0

Note: Helicopter, joyflights and sightseeing charter flights not included.

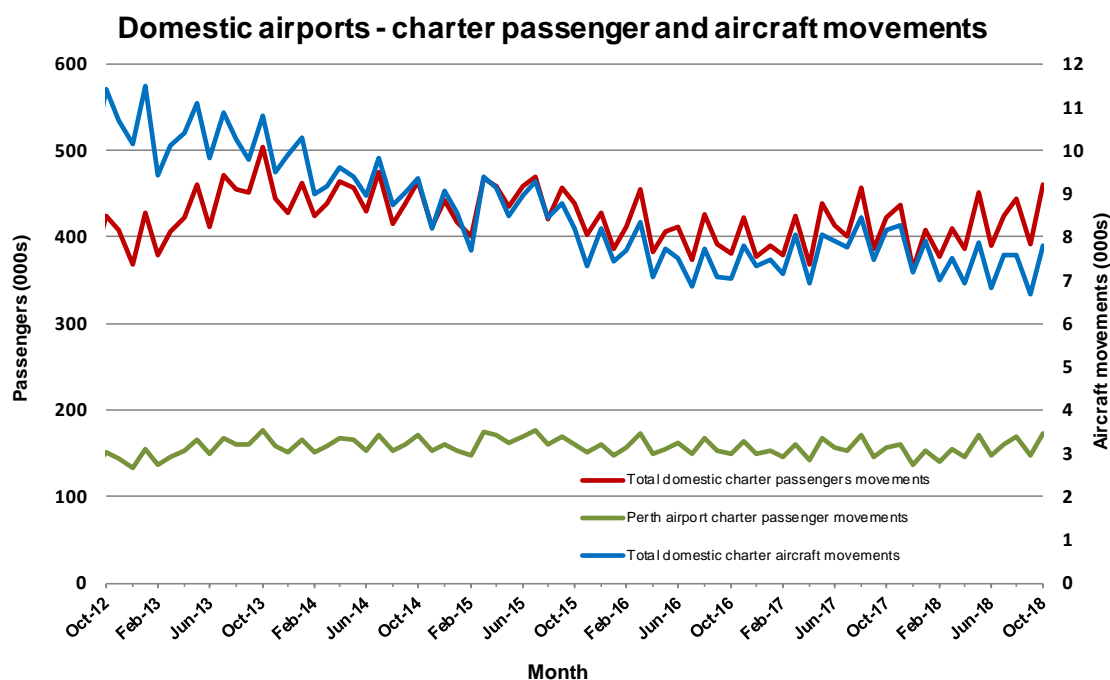
Charter passenger and aircraft movement numbers are the sum of arrivals and departures at each airport.

Table 15: Domestic airports - charter activity - monthly

	Oct 2017	Oct 2018	% Change
Total domestic charter passenger movements	422 758	460 104	8.8
Total domestic charter aircraft movements	8 146	7 796	-4.3
Perth airport charter passenger movements	157 210	173 734	10.5
Perth airport charter aircraft movements	2 674	2 684	0.4

Note: Helicopter, joyflights and sightseeing charter flights not included.

Charter passenger and aircraft movement numbers are the sum of arrivals and departures at each airport.



DEFINITIONS

Aircraft Trips	The number of flight stages. A return flight counts as two aircraft trips.
Airport Movements	Airport movements (passenger and cargo) are measured once on arrival and once on departure. Each domestic trip generates two movements at airports. For example, a trip from Melbourne to Sydney will be counted twice, as a passenger departure at Melbourne and as a passenger arrival at Sydney. At the national level, the sum of all domestic airport traffic will therefore be equal to twice the number of trips undertaken.
Available Seat Kilometres (ASKs)	Calculated by multiplying the number of seats available on each flight stage, by the distance in kilometres between the ports. The distances used are Great Circle Distances.
City-Pair	The ports shown make up the city-pair route. Passenger movements shown for a city pair reflect total traffic in both directions.
Flight Stage	The operation of an aircraft from take-off to landing.
Load Factor	The total revenue passenger kilometres performed as a percentage of the total available seat kilometres.
Passengers Carried	Revenue passengers carried.
Regular Public Transport Services (RPT)	All air service operations in which aircraft are available for the transport of members of the public and are conducted in accordance with fixed schedules. It does not include charter or other non-scheduled operations.
Revenue Passengers	All passengers paying any fare. Frequent flyer redemption travellers are regarded as revenue passengers.
Revenue Passenger Kilometres (RPKs)	Calculated by multiplying the number of revenue passengers travelling on each flight stage, by the distance in kilometres between the ports. The distances used are Great Circle Distances.
Traffic on board by stages	The total of all traffic (revenue passengers) on each flight stage between two directly connected airports.
..	Data not included
NA	Not applicable